



Official Basketball Box Score - Final
Gust. Adolphus at Bethel (MN)
 11/20/21 Robertson Center, St. Paul
 2021-22 Men's Basketball

Game Time: 3:00 PM
 Game Duration: 1:41
 Attendance: 147

Officials: Andy Acosta, Mark Ricker, Jeff Haack

Gust. Adolphus - 71

Record: 2-2 (1-0)

NO.	Name	Min	FG			Rebounds			Fouls		TP	AS	TO	ST	Blocks		+/-
			M-A	M-A	M-A	OR	DR	TOT	PF	FD					BS	BA	
4	Nolan Malo	F 25:07	2-4	0-1	2-2	1	1	2	2	1	6	3	4	4	1	0	-3
15	Kaleb Feahn	F 27:38	9-16	2-7	2-2	2	3	5	2	3	22	2	2	1	0	2	5
22	Adam Biewen	F 26:31	1-6	0-3	0-0	0	6	6	3	0	2	2	1	2	0	0	-3
32	Jake Guse	C 21:50	0-3	0-0	1-2	2	3	5	2	3	1	1	1	1	4	0	9
3	Jordan Schommer	G 29:13	5-12	3-7	2-3	0	1	1	0	1	15	0	1	0	0	0	-5
5	Evan Wieker	25:51	1-1	0-0	4-4	1	2	3	2	3	6	1	2	0	0	0	6
33	Peter Lundquist	11:54	1-3	0-0	0-0	0	0	0	3	2	2	2	2	0	1	0	4
21	Spencer Swanson	21:09	6-8	0-1	5-5	1	1	2	1	5	17	0	0	0	0	0	-2
1	Brady Kienitz	10:47	0-1	0-1	0-0	1	0	1	0	0	0	1	1	0	0	0	9
Team						0	0	0			0		0				
Totals			25-54	5-20	16-18	8	17	25	15	18	71	12	14	8	6	2	4

Shooting By Period		
1 st FG%	11-30	36.7%
3PT%	2-13	15.4%
FT%	9-11	81.8%
2 nd FG%	14-24	58.3%
3PT%	3-7	42.9%
FT%	7-7	100%
GM FG%	25-54	46.3%
3PT%	5-20	25.0%
FT%	16-18	88.9%

Dead Ball Rebounds: 5, 1

Technical Fouls::NONE

Bethel (MN) - 67

Record: 2-1 (0-1)

NO.	Name	Min	FG			Rebounds			Fouls		TP	AS	TO	ST	Blocks		+/-
			M-A	M-A	M-A	OR	DR	TOT	PF	FD					BS	BA	
23	Zach Doely	F 35:32	8-12	1-1	5-7	5	7	12	0	6	22	3	2	1	1	1	1
33	Jaren Tschetter	F 32:11	4-11	3-6	2-2	3	0	3	3	2	13	1	1	2	0	0	0
20	Jake Wald	G 12:33	1-1	0-0	0-0	0	1	1	2	0	2	0	2	1	0	0	-6
21	Tommy Jensen	G 21:15	0-4	0-2	3-3	0	0	0	2	3	3	0	4	0	0	1	-8
22	Solomon Whalen	G 26:01	3-5	1-2	1-2	1	1	2	4	3	8	1	2	2	0	0	-2
12	Sam Nelson	25:50	2-4	0-2	0-0	1	1	2	1	1	4	4	3	3	0	0	-1
24	Myles Coleman	17:13	2-10	0-0	0-0	2	2	4	3	0	4	1	1	0	1	4	-1
42	Dom Aguilar	16:43	2-4	2-4	0-0	0	2	2	3	0	6	2	3	0	0	0	0
10	Cole Jacobson	09:43	2-3	1-2	0-0	2	0	2	0	0	5	1	1	0	0	0	-4
34	Gabe Siler	02:59	0-1	0-0	0-0	0	0	0	0	0	0	0	0	0	0	0	1
Team						0	0	0			0		1				
Totals			24-55	8-19	11-14	14	14	28	18	15	67	13	20	9	2	6	-4

Shooting By Period		
1 st FG%	15-32	46.9%
3PT%	5-10	50.0%
FT%	3-5	60%
2 nd FG%	9-23	39.1%
3PT%	3-9	33.3%
FT%	8-9	88.9%
GM FG%	24-55	43.6%
3PT%	8-19	42.1%
FT%	11-14	78.6%

Dead Ball Rebounds: 2, 4

Technical Fouls::NONE

	GAC	BU
Biggest lead	9 (2 nd 5:27)	7 (2 nd 16:27)
Best Scoring Run	8 (1 st 15:30)	7 (1 st 2:16)
Lead Changes	5	
Times Tied	7	
Time with Lead	17:53	18:59

	GAC	BU
Points from		
Turnovers	23	10
Paint	36	32
Second Chance	8	18
Fast Breaks	8	9
Bench	25	19

	Period by Period Scoring		
	1st	2nd	TOT
GAC	33	38	71
BU	38	29	67



Officials: Andy Acosta, Mark Ricker, Jeff Haack

Period 1

Quarter Starters:

BU	20 Wald J	21 Jensen T	22 Whalen S	23 Doely Z	33 Tschetter J
GAC	3 Schommer J	4 Malo N	15 Feahn K	22 Biewen A	32 Guse J

Game Time	BU	Score	Diff	GAC
20:00	23 DOELY Z jumpball won			32 GUSE J jumpball lost
19:46	23 DOELY Z 2pt FG in the paint, driving layup made (2)	2-0	2	
19:16	jump ball situation			
19:11				22 BIEWEN A 2pt FG outside the paint, turnaround jump shot missed
19:10	defensive dead ball rebound (1)			
18:55	23 DOELY Z 2pt FG in the paint, layup blocked			
18:55				32 GUSE J block (1)
18:51				22 BIEWEN A defensive rebound (1)
18:47				4 MALO N 3pt FG , jump shot missed
18:43	20 WALD J defensive rebound (1)			
18:40	22 WHALEN S foul drawn (1)			15 FEAHN K foul personal (1 - 1)
18:27	33 TSCHETTER J 3pt FG , pull up jump shot made (3)	5-0	5	
18:06		5-3	2	3 SCHOMMER J 3pt FG , jump shot made (3)
18:06				4 MALO N assist (1)
17:40	21 JENSEN T 2pt FG in the paint, layup missed			
17:38				22 BIEWEN A defensive rebound (2)
17:35				15 FEAHN K 3pt FG , jump shot missed
17:32				4 MALO N offensive rebound (1)
17:30				3 SCHOMMER J 3pt FG second chance, jump shot missed
17:27	defensive dead ball rebound (2)			
17:15	33 TSCHETTER J 3pt FG , jump shot missed			
17:11	33 TSCHETTER J offensive rebound (1)			
17:10	21 JENSEN T 3pt FG second chance, jump shot missed			
17:06				22 BIEWEN A defensive rebound (3)
17:00				15 FEAHN K 3pt FG , jump shot missed
16:59	defensive dead ball rebound (3)			
16:59	21 JENSEN T foul drawn (1)			4 MALO N foul personal (1 - 2)
16:59				4 MALO N substitution out
16:59				15 FEAHN K substitution out
16:59				5 WIEKER E substitution in
16:59				33 LUNDQUIST P substitution in
16:36	20 WALD J foul offensive (1 - 1)			32 GUSE J foul drawn (1)
16:36	20 WALD J turnover offensive (1)			
16:21				5 WIEKER E turnover lost ball (1)
16:08	33 TSCHETTER J 2pt FG from turnover in the paint, layup missed			
16:06				32 GUSE J defensive rebound (1)
16:02		5-6	-1	3 SCHOMMER J 3pt FG , jump shot made (6)
16:02				22 BIEWEN A assist (1)
15:47	21 JENSEN T foul offensive (1 - 2)			33 LUNDQUIST P foul drawn (1)
15:47	21 JENSEN T turnover offensive (1)			
15:47	20 WALD J substitution out			
15:47	21 JENSEN T substitution out			



Gust. Adolphus at Bethel (MN)

11/20/21 Robertson Center, St. Paul
2021-22 Men's Basketball

Game Time: 3:00 PM

Game Duration: 1:41

Attendance: 147

Officials: Andy Acosta, Mark Ricker, Jeff Haack

Game Time	BU	Score	Diff	GAC
15:47	22 WHALEN S substitution out			
15:47	12 NELSON S substitution in			
15:47	24 COLEMAN M substitution in			
15:47	42 AGUILAR D substitution in			
15:47				32 GUSE J substitution out
15:47				21 SWANSON S substitution in
15:30		5-8	-3	33 LUNDQUIST P 2pt FG from turnover in the paint, driving layup made (2)
15:14	23 DOELY Z 2pt FG in the paint, hook shot made (4)	7-8	-1	
14:54				22 BIEWEN A 3pt FG , jump shot missed
14:50				5 WIEKER E offensive rebound (1)
14:49	12 NELSON S steal (1)			5 WIEKER E turnover bad pass (2)
14:44	42 AGUILAR D 3pt FG fast break from turnover, jump shot made (3)	10-8	2	
14:44	24 COLEMAN M assist (1)			
14:19		10-10	0	21 SWANSON S 2pt FG in the paint, layup made (2)
14:19				33 LUNDQUIST P assist (1)
13:58	23 DOELY Z 2pt FG in the paint, layup made (6)	12-10	2	
13:35	12 NELSON S steal (2)			33 LUNDQUIST P turnover lost ball (1)
13:29	12 NELSON S 2pt FG fast break from turnover in the paint, layup made (2)	14-10	4	
13:14				3 SCHOMMER J 3pt FG , jump shot missed
13:10	23 DOELY Z defensive rebound (1)			
12:51	24 COLEMAN M 2pt FG in the paint, driving layup missed			
12:49				22 BIEWEN A defensive rebound (4)
12:36				33 LUNDQUIST P 2pt FG in the paint, turnaround jump shot missed
12:34				offensive dead ball rebound (1)
12:34	33 TSCHETTER J substitution out			
12:34	22 WHALEN S substitution in			
12:34				3 SCHOMMER J substitution out
12:34				22 BIEWEN A substitution out
12:34				33 LUNDQUIST P substitution out
12:34				1 KIENITZ B substitution in
12:34				4 MALO N substitution in
12:34				15 FEAHN K substitution in
12:15	22 WHALEN S foul shooting (1 - 3)			21 SWANSON S foul drawn (1)
12:15		14-11	3	21 SWANSON S free throw 1 - 2 made (3)
12:15		14-12	2	21 SWANSON S free throw 2 - 2 made (4)
11:59	24 COLEMAN M 2pt FG in the paint, layup missed			
11:57	24 COLEMAN M offensive rebound (1)			
11:52	23 DOELY Z 2pt FG second chance in the paint, layup made (8)	16-12	4	
11:41	24 COLEMAN M foul personal (1 - 4)			15 FEAHN K foul drawn (1)
11:41				5 WIEKER E substitution out
11:41				21 SWANSON S substitution out
11:41				22 BIEWEN A substitution in
11:41				32 GUSE J substitution in
11:32		16-14	2	15 FEAHN K 2pt FG outside the paint, jump shot made (2)
11:06	12 NELSON S turnover lost ball (1)			4 MALO N steal (1)
11:00				15 FEAHN K 2pt FG from turnover in the paint, layup blocked



Game Time	BU	Score	Diff	GAC
11:00	23 DOELY Z block (1)			
10:56				15 FEAHN K offensive rebound (1)
10:56		16-16	0	15 FEAHN K 2pt FG from turnover second chance in the paint, layup made (4)
10:42	24 COLEMAN M 2pt FG in the paint, layup made (2)	18-16	2	
10:42	12 NELSON S assist (1)			
10:18				32 GUSE J 2pt FG in the paint, hook shot missed
10:15	23 DOELY Z defensive rebound (2)			
09:56	42 AGUILAR D turnover bad pass (1)			22 BIEWEN A steal (1)
09:52		18-18	0	15 FEAHN K 2pt FG fast break from turnover in the paint, layup made (6)
09:52				22 BIEWEN A assist (2)
09:42	24 COLEMAN M 2pt FG in the paint, layup blocked			
09:42				32 GUSE J block (2)
09:38				15 FEAHN K defensive rebound (2)
09:34				22 BIEWEN A 3pt FG , jump shot missed
09:29	42 AGUILAR D defensive rebound (1)			
09:24	Timeout 30 Sec			
09:24	23 DOELY Z substitution out			
09:24	42 AGUILAR D substitution out			
09:24	20 WALD J substitution in			
09:24	21 JENSEN T substitution in			
09:13	24 COLEMAN M substitution out			
09:13	33 TSCHETTER J substitution in			
09:07	22 WHALEN S 2pt FG in the paint, layup made (2)	20-18	2	
09:07	33 TSCHETTER J assist (1)			
08:51		20-20	0	15 FEAHN K 2pt FG in the paint, floating jump shot made (8)
08:39	33 TSCHETTER J 2pt FG in the paint, layup missed			
08:36				22 BIEWEN A defensive rebound (5)
08:29		20-22	-2	4 MALO N 2pt FG in the paint, jump shot made (2)
08:29				1 KIENITZ B assist (1)
08:02	jump ball situation			
08:02	12 NELSON S substitution out			
08:02	22 WHALEN S substitution out			
08:02	10 JACOBSON C substitution in			
08:02	23 DOELY Z substitution in			
08:02				1 KIENITZ B substitution out
08:02				15 FEAHN K substitution out
08:02				3 SCHOMMER J substitution in
08:02				5 WIEKER E substitution in
07:57	21 JENSEN T 2pt FG in the paint, layup blocked			
07:57				32 GUSE J block (3)
07:57	offensive dead ball rebound (4)			
07:55	turnover shot clock (5)			
07:41		20-24	-4	22 BIEWEN A 2pt FG from turnover in the paint, layup made (2)
07:41				4 MALO N assist (2)
07:20	20 WALD J 2pt FG in the paint, layup made (2)	22-24	-2	
07:20	10 JACOBSON C assist (1)			
06:54	20 WALD J foul shooting (2 - 5)			3 SCHOMMER J foul drawn (1)
06:54				3 SCHOMMER J free throw 1 - 3 missed



Gust. Adolphus at Bethel (MN)

11/20/21 Robertson Center, St. Paul
2021-22 Men's Basketball

Officials: Andy Acosta, Mark Ricker, Jeff Haack

Game Time	BU	Score	Diff	GAC
06:54				offensive dead ball rebound (2)
06:54		22-25	-3	3 SCHOMMER J free throw 2 - 3 made (7)
06:54	20 WALD J substitution out			
06:54	34 SILER G substitution in			
06:54				4 MALO N substitution out
06:54				22 BIEWEN A substitution out
06:54				32 GUSE J substitution out
06:54				15 FEAHN K substitution in
06:54				21 SWANSON S substitution in
06:54				33 LUNDQUIST P substitution in
06:54		22-26	-4	3 SCHOMMER J free throw 3 - 3 made (8)
06:38	23 DOELY Z 2pt FG in the paint, driving layup made (10)	24-26	-2	
06:16	21 JENSEN T foul personal (2 - 6)			33 LUNDQUIST P foul drawn (2)
06:16	21 JENSEN T substitution out			
06:16	24 COLEMAN M substitution in			
06:09	33 TSCHETTER J foul personal (1 - 7)			21 SWANSON S foul drawn (2)
06:09		24-27	-3	21 SWANSON S 1&1 free throw 1 made (5)
06:09		24-28	-4	21 SWANSON S 1&1 free throw 2 made (6)
05:49	23 DOELY Z foul drawn (1)			33 LUNDQUIST P foul shooting (1 - 3)
05:49	23 DOELY Z free throw 1 - 2 made (11)	25-28	-3	
05:49	23 DOELY Z free throw 2 - 2 missed			
05:49				5 WIEKER E defensive rebound (2)
05:37				33 LUNDQUIST P turnover bad pass (2)
05:37	34 SILER G 2pt FG from turnover in the paint, floating jump shot missed			
05:37				3 SCHOMMER J defensive rebound (1)
05:37		25-30	-5	5 WIEKER E 2pt FG in the paint, driving layup made (2)
05:37				15 FEAHN K assist (1)
04:53	23 DOELY Z 2pt FG in the paint, layup made (13)	27-30	-3	
04:53	23 DOELY Z foul drawn (2)			33 LUNDQUIST P foul shooting (2 - 4)
04:53	23 DOELY Z free throw 1 - 1 made (14)	28-30	-2	
04:34				15 FEAHN K 3pt FG , jump shot blocked
04:34	24 COLEMAN M block (1)			
04:34				offensive dead ball rebound (3)
04:34				33 LUNDQUIST P 2pt FG second chance in the paint, layup missed
04:34	23 DOELY Z defensive rebound (3)			
04:34				33 LUNDQUIST P substitution out
04:34				32 GUSE J substitution in
04:34	33 TSCHETTER J 2pt FG in the paint, layup missed			
04:34				15 FEAHN K defensive rebound (3)
04:03				32 GUSE J 2pt FG in the paint, layup missed
04:03				32 GUSE J offensive rebound (2)
04:03				32 GUSE J 2pt FG second chance in the paint, layup missed
04:03				32 GUSE J offensive rebound (3)
04:03	33 TSCHETTER J foul shooting (2 - 8)			32 GUSE J foul drawn (2)
03:55				32 GUSE J free throw 1 - 2 missed
03:55				offensive dead ball rebound (4)
03:55	33 TSCHETTER J substitution out			
03:55	34 SILER G substitution out			



Gust. Adolphus at Bethel (MN)

11/20/21 Robertson Center, St. Paul
2021-22 Men's Basketball

Officials: Andy Acosta, Mark Ricker, Jeff Haack

Game Time	BU	Score	Diff	GAC
03:55	12 NELSON S substitution in			
03:55	22 WHALEN S substitution in			
03:55				3 SCHOMMER J substitution out
03:55				5 WIEKER E substitution out
03:55				1 KIENITZ B substitution in
03:55				22 BIEWEN A substitution in
03:55		28-31	-3	32 GUSE J free throw 2 - 2 made (1)
03:36	24 COLEMAN M 2pt FG in the paint, layup blocked			
03:36				32 GUSE J block (4)
03:33				21 SWANSON S defensive rebound (1)
03:21				21 SWANSON S 2pt FG in the paint, turnaround jump shot missed
03:18	24 COLEMAN M defensive rebound (2)			
03:15	23 DOELY Z foul drawn (3)			32 GUSE J foul shooting (1 - 5)
03:15	23 DOELY Z free throw fast break 1 - 2 missed			
03:15	offensive dead ball rebound (5)			
03:15	10 JACOBSON C substitution out			
03:15	42 AGUILAR D substitution in			
03:15				32 GUSE J substitution out
03:15				4 MALO N substitution in
03:15				4 MALO N substitution out
03:15				32 GUSE J substitution in
03:15	42 AGUILAR D substitution out			
03:15	10 JACOBSON C substitution in			
03:15	23 DOELY Z free throw fast break 2 - 2 made (15)	29-31	-2	
03:02	10 JACOBSON C substitution out			
03:02	42 AGUILAR D substitution in			
03:02				15 FEAHN K 3pt FG , jump shot missed
02:58	42 AGUILAR D defensive rebound (2)			
02:51				32 GUSE J substitution out
02:51				4 MALO N substitution in
02:51	42 AGUILAR D 3pt FG , jump shot made (6)	32-31	1	
02:51	12 NELSON S assist (2)			
02:18				22 BIEWEN A 3pt FG , jump shot missed
02:16	12 NELSON S defensive rebound (1)			
02:16	24 COLEMAN M 2pt FG in the paint, layup blocked			
02:16				4 MALO N block (1)
02:16	23 DOELY Z offensive rebound (4)			
02:16	22 WHALEN S 3pt FG fast break second chance, jump shot made (5)	35-31	4	
02:16	23 DOELY Z assist (1)			
01:56	24 COLEMAN M foul personal (2 - 9)			15 FEAHN K foul drawn (2)
01:56	42 AGUILAR D substitution out			
01:56	10 JACOBSON C substitution in			
01:56				4 MALO N substitution out
01:56				32 GUSE J substitution in
01:56		35-32	3	15 FEAHN K 1&1 free throw 1 made (9)
01:56		35-33	2	15 FEAHN K 1&1 free throw 2 made (10)
01:56				1 KIENITZ B substitution out
01:56				15 FEAHN K substitution out



Gust. Adolphus at Bethel (MN)

11/20/21 Robertson Center, St. Paul
2021-22 Men's Basketball

Officials: Andy Acosta, Mark Ricker, Jeff Haack

Game Time	BU	Score	Diff	GAC
01:56				3 SCHOMMER J substitution in
01:56				5 WIEKER E substitution in
01:56				32 GUSE J substitution out
01:56				4 MALO N substitution in
01:56	24 COLEMAN M substitution out			
01:56	42 AGUILAR D substitution in			
01:45	42 AGUILAR D 3pt FG , jump shot missed			
01:41				4 MALO N defensive rebound (2)
01:14	22 WHALEN S steal (1)			4 MALO N turnover lost ball (1)
01:04	10 JACOBSON C 3pt FG from turnover, jump shot missed			
01:01	10 JACOBSON C offensive rebound (1)			
00:48	23 DOELY Z foul drawn (4)			21 SWANSON S foul personal (1 - 6)
00:48				21 SWANSON S substitution out
00:48				32 GUSE J substitution in
00:44	22 WHALEN S 3pt FG from turnover second chance, jump shot missed			
00:42				32 GUSE J defensive rebound (4)
00:36	12 NELSON S foul drawn (1)			32 GUSE J foul offensive (2 - 7)
00:36				32 GUSE J turnover offensive (1)
00:36	22 WHALEN S substitution out			
00:36	33 TSCHETTER J substitution in			
00:36				32 GUSE J substitution out
00:36				21 SWANSON S substitution in
00:22	10 JACOBSON C 3pt FG from turnover, jump shot made (3)	38-33	5	
00:22	23 DOELY Z assist (2)			
00:03				3 SCHOMMER J 3pt FG , jump shot missed
00:00				offensive dead ball rebound (5)
END OF PERIOD				
BU 38-33 GAC				



Officials: Andy Acosta, Mark Ricker, Jeff Haack

Gust. Adolphus - 33

NO.	Name	Min	FG			Rebounds			Fouls		TP	AS	TO	ST	Blocks		+/-
			M-A	M-A	M-A	OR	DR	TOT	PF	FD					BS	BA	
4	Nolan Malo	F 11:32	1-2	0-1	0-0	1	1	2	1	0	2	2	1	1	1	0	-4
15	Kaleb Feahn	F 12:31	4-9	0-4	2-2	1	2	3	1	2	10	1	0	0	0	2	-1
22	Adam Biewen	F 16:08	1-5	0-3	0-0	0	5	5	0	0	2	2	0	1	0	0	-4
32	Jake Guse	C 10:54	0-3	0-0	1-2	2	2	4	2	2	1	0	1	0	4	0	10
3	Jordan Schommer	G 13:29	2-5	2-5	2-3	0	1	1	0	1	8	0	0	0	0	0	-7
5	Evan Wieker	11:21	1-1	0-0	0-0	1	1	2	0	0	2	0	2	0	0	0	-5
33	Peter Lundquist	06:45	1-3	0-0	0-0	0	0	0	2	2	2	1	2	0	0	0	-3
21	Spencer Swanson	10:49	1-2	0-0	4-4	0	1	1	1	2	6	0	0	0	0	0	-13
1	Brady Kienitz	06:31	0-0	0-0	0-0	0	0	0	0	0	0	1	0	0	0	0	2
Team						0	0	0			0		0				
Totals			11-30	2-13	9-11	5	13	18	7	9	33	7	6	2	5	2	-5

Shooting By Period		
1st FG%	11-30	36.7%
3PT%	2-13	15.4%
FT%	9-11	81.8%
GM FG%	11-30	36.7%
3PT%	2-13	15.4%
FT%	9-11	81.8%

Dead Ball Rebounds: 5, 0

Technical Fouls::NONE

Bethel (MN) - 38

NO.	Name	Min	FG			Rebounds			Fouls		TP	AS	TO	ST	Blocks		+/-
			M-A	M-A	M-A	OR	DR	TOT	PF	FD					BS	BA	
23	Zach Doely	F 18:38	6-7	0-0	3-5	1	3	4	0	4	15	2	0	0	1	1	7
33	Jaren Tschetter	F 13:21	1-5	1-2	0-0	1	0	1	2	0	3	1	0	0	0	0	5
20	Jake Wald	G 06:43	1-1	0-0	0-0	0	1	1	2	0	2	0	1	0	0	0	-4
21	Tommy Jensen	G 07:21	0-3	0-1	0-0	0	0	0	2	1	0	0	1	0	0	1	-3
22	Solomon Whalen	G 12:03	2-3	1-2	0-0	0	0	0	1	1	5	0	0	1	0	0	-3
12	Sam Nelson	11:40	1-1	0-0	0-0	0	1	1	0	1	2	2	1	2	0	0	6
24	Myles Coleman	10:54	1-6	0-0	0-0	1	1	2	2	0	2	1	0	0	1	3	5
42	Dom Aguilar	09:25	2-3	2-3	0-0	0	2	2	0	0	6	0	1	0	0	0	10
10	Cole Jacobson	06:56	1-2	1-2	0-0	1	0	1	0	0	3	1	0	0	0	0	1
34	Gabe Siler	02:59	0-1	0-0	0-0	0	0	0	0	0	0	0	0	0	0	0	1
Team						0	0	0			0		1				
Totals			15-32	5-10	3-5	4	8	12	9	7	38	7	5	3	2	5	5

Shooting By Period		
1st FG%	15-32	46.9%
3PT%	5-10	50.0%
FT%	3-5	60%
GM FG%	15-32	46.9%
3PT%	5-10	50.0%
FT%	3-5	60.0%

Dead Ball Rebounds: 2, 3

Technical Fouls::NONE

	GAC	BU
Biggest lead	5 (1st 5:37)	5 (1st 18:27)
Best Scoring Run	8 (1st 15:30)	7 (1st 2:16)
Lead Changes	4	
Times Tied	4	
Time with Lead	06:56	11:08

Points from	GAC	BU
Turnovers	8	8
Paint	16	20
Second Chance	5	5
Fast Breaks	2	9
Bench	10	13

	Period by Period Scoring		
	1st	2nd	TOT
GAC	33	38	71
BU	38	29	67

**Period 2****Quarter Starters:**

BU	20 Wald J	21 Jensen T	22 Whalen S	23 Doely Z	33 Tschetter J
GAC	3 Schommer J	4 Malo N	15 Feahn K	22 Biewen A	32 Guse J

Game Time	BU	Score	Diff	GAC
20:00	10 JACOBSON C substitution out			
20:00	12 NELSON S substitution out			
20:00	42 AGUILAR D substitution out			
20:00	20 WALD J substitution in			
20:00	21 JENSEN T substitution in			
20:00	22 WHALEN S substitution in			
20:00				5 WIEKER E substitution out
20:00				21 SWANSON S substitution out
20:00				15 FEAHN K substitution in
20:00				32 GUSE J substitution in
19:56	20 WALD J steal (1)			15 FEAHN K turnover lost ball (1)
19:56	20 WALD J turnover dribbling violation (2)			
19:26		38-35	3	15 FEAHN K 2pt FG from turnover in the paint, driving layup made (12)
19:05	21 JENSEN T turnover bad pass (2)			4 MALO N steal (2)
18:58				15 FEAHN K 3pt FG from turnover, jump shot missed
18:55	22 WHALEN S defensive rebound (1)			
18:52	22 WHALEN S turnover lost ball (1)			15 FEAHN K steal (1)
18:48		38-37	1	15 FEAHN K 2pt FG fast break from turnover in the paint, layup made (14)
18:21	33 TSCHETTER J 3pt FG , jump shot made (6)	41-37	4	
18:21	22 WHALEN S assist (1)			
18:02		41-39	2	3 SCHOMMER J 2pt FG in the paint, jump shot made (10)
17:47	33 TSCHETTER J 2pt FG in the paint, layup missed			
17:44				32 GUSE J defensive rebound (5)
17:36				3 SCHOMMER J 2pt FG in the paint, layup missed
17:33	23 DOELY Z defensive rebound (5)			
17:25	33 TSCHETTER J 3pt FG , jump shot made (9)	44-39	5	
17:25	23 DOELY Z assist (3)			
17:00				22 BIEWEN A 2pt FG in the paint, layup missed
16:59	23 DOELY Z defensive rebound (6)			
16:59				Timeout 30 Sec
16:40	20 WALD J substitution out			
16:40	12 NELSON S substitution in			
16:29	33 TSCHETTER J 3pt FG , jump shot missed			
16:27	23 DOELY Z offensive rebound (7)			
16:27	23 DOELY Z foul drawn (5)			4 MALO N foul shooting (2 - 1)
16:27				15 FEAHN K substitution out
16:27				32 GUSE J substitution out
16:27				5 WIEKER E substitution in
16:27				33 LUNDQUIST P substitution in
16:27	23 DOELY Z free throw 1 - 2 made (16)	45-39	6	
16:27	23 DOELY Z free throw 2 - 2 made (17)	46-39	7	
16:02		46-41	5	4 MALO N 2pt FG in the paint, turnaround jump shot made (4)



Gust. Adolphus at Bethel (MN)

11/20/21 Robertson Center, St. Paul
2021-22 Men's Basketball

Officials: Andy Acosta, Mark Ricker, Jeff Haack

Game Time	BU	Score	Diff	GAC
15:35	12 NELSON S 3pt FG , jump shot missed			
15:34				defensive dead ball rebound (6)
15:34	23 DOELY Z substitution out			
15:34	42 AGUILAR D substitution in			
15:34				3 SCHOMMER J substitution out
15:34				4 MALO N substitution out
15:34				1 KIENITZ B substitution in
15:34				21 SWANSON S substitution in
15:08				21 SWANSON S 3pt FG , jump shot missed
15:03				21 SWANSON S offensive rebound (2)
15:03		46-43	3	21 SWANSON S 2pt FG second chance in the paint, layup made (8)
15:03	42 AGUILAR D foul shooting (1 - 1)			21 SWANSON S foul drawn (3)
15:03		46-44	2	21 SWANSON S free throw 1 - 1 made (9)
14:50	12 NELSON S 2pt FG in the paint, layup made (4)	48-44	4	
14:28	42 AGUILAR D foul personal (2 - 2)			21 SWANSON S foul drawn (4)
14:28	21 JENSEN T substitution out			
14:28	24 COLEMAN M substitution in			
14:15				1 KIENITZ B 3pt FG , jump shot missed
14:09				1 KIENITZ B offensive rebound (1)
14:04	jump ball situation			
14:04	12 NELSON S steal (3)			1 KIENITZ B turnover lost ball (1)
14:04				22 BIEWEN A substitution out
14:04				15 FEAHN K substitution in
14:04	12 NELSON S 3pt FG from turnover, jump shot missed			
14:04				5 WIEKER E defensive rebound (3)
14:03		48-46	2	21 SWANSON S 2pt FG in the paint, layup made (11)
14:03				33 LUNDQUIST P assist (2)
13:17	22 WHALEN S 2pt FG in the paint, layup missed			
13:13	24 COLEMAN M offensive rebound (3)			
13:12	24 COLEMAN M 2pt FG second chance in the paint, layup made (4)	50-46	4	
12:49		50-48	2	21 SWANSON S 2pt FG in the paint, turnaround jump shot made (13)
12:30	24 COLEMAN M 2pt FG in the paint, layup blocked			
12:30				33 LUNDQUIST P block (1)
12:28	22 WHALEN S offensive rebound (2)			
12:28	22 WHALEN S turnover travel (2)			
12:28	22 WHALEN S substitution out			
12:28	33 TSCHETTER J substitution out			
12:28	21 JENSEN T substitution in			
12:28	23 DOELY Z substitution in			
12:09		50-50	0	15 FEAHN K 2pt FG from turnover in the paint, layup made (16)
11:49	24 COLEMAN M 2pt FG in the paint, layup missed			
11:47	23 DOELY Z offensive rebound (8)			
11:44	24 COLEMAN M turnover out of bounds (1)			
11:44	24 COLEMAN M substitution out			
11:44	10 JACOBSON C substitution in			
11:42	Timeout 60 Sec			



Gust. Adolphus at Bethel (MN)

11/20/21 Robertson Center, St. Paul
2021-22 Men's Basketball

Officials: Andy Acosta, Mark Ricker, Jeff Haack

Game Time	BU	Score	Diff	GAC
11:31		50-52	-2	21 SWANSON S 2pt FG from turnover in the paint, layup made (15)
11:31				15 FEAHN K assist (2)
11:18	23 DOELY Z foul drawn (6)			33 LUNDQUIST P foul personal (3 - 2)
11:18				1 KIENITZ B substitution out
11:18				3 SCHOMMER J substitution in
11:18	42 AGUILAR D substitution out			
11:18	33 TSCHETTER J substitution in			
11:18				5 WIEKER E substitution out
11:18				33 LUNDQUIST P substitution out
11:18				22 BIEWEN A substitution in
11:18				32 GUSE J substitution in
11:16	33 TSCHETTER J 2pt FG in the paint, layup made (11)	52-52	0	
11:16	12 NELSON S assist (3)			
10:58		52-54	-2	21 SWANSON S 2pt FG in the paint, layup made (17)
10:58				32 GUSE J assist (1)
10:41	23 DOELY Z 2pt FG outside the paint, jump shot missed			
10:37	10 JACOBSON C offensive rebound (2)			
10:34	10 JACOBSON C 2pt FG second chance in the paint, layup made (5)	54-54	0	
10:18		54-57	-3	15 FEAHN K 3pt FG , jump shot made (19)
10:01	33 TSCHETTER J foul drawn (1)			15 FEAHN K foul personal (2 - 3)
10:01	12 NELSON S substitution out			
10:01	20 WALD J substitution in			
10:01				15 FEAHN K substitution out
10:01				21 SWANSON S substitution out
10:01				4 MALO N substitution in
10:01				5 WIEKER E substitution in
09:48	21 JENSEN T turnover lost ball (3)			22 BIEWEN A steal (2)
09:44	33 TSCHETTER J steal (1)			22 BIEWEN A turnover lost ball (1)
09:24	10 JACOBSON C turnover travel (1)			
09:10		54-59	-5	3 SCHOMMER J 2pt FG from turnover outside the paint, pull up jump shot made (12)
08:57	21 JENSEN T foul drawn (2)			22 BIEWEN A foul personal (1 - 4)
08:57	10 JACOBSON C substitution out			
08:57	22 WHALEN S substitution in			
08:45	23 DOELY Z 2pt FG in the paint, layup missed			
08:43				22 BIEWEN A defensive rebound (6)
08:38				4 MALO N turnover travel (2)
08:21	23 DOELY Z turnover bad pass (1)			
08:21				32 GUSE J substitution out
08:21				21 SWANSON S substitution in
08:02				3 SCHOMMER J turnover out of bounds (1)
07:53	21 JENSEN T turnover bad pass (4)			4 MALO N steal (3)
07:49	21 JENSEN T substitution out			
07:49	42 AGUILAR D substitution in			
07:42				4 MALO N 2pt FG from turnover in the paint, turnaround jump shot missed
07:39	23 DOELY Z defensive rebound (9)			
07:32	42 AGUILAR D turnover lost ball (2)			



Gust. Adolphus at Bethel (MN)

11/20/21 Robertson Center, St. Paul
2021-22 Men's Basketball

Officials: Andy Acosta, Mark Ricker, Jeff Haack

Game Time	BU	Score	Diff	GAC
07:31	Timeout 30 Sec			
07:31	20 WALD J substitution out			
07:31	12 NELSON S substitution in			
07:31				22 BIEWEN A substitution out
07:31				15 FEAHN K substitution in
07:17	22 WHALEN S foul personal (2 - 3)			15 FEAHN K foul drawn (3)
07:06		54-62	-8	3 SCHOMMER J 3pt FG from turnover, jump shot made (15)
07:06				5 WIEKER E assist (1)
06:54	22 WHALEN S 2pt FG in the paint, layup made (7)	56-62	-6	
06:54	42 AGUILAR D assist (1)			
06:53	22 WHALEN S foul personal (3 - 4)			21 SWANSON S foul drawn (5)
06:20	22 WHALEN S foul shooting (4 - 5)			5 WIEKER E foul drawn (1)
06:20		56-63	-7	5 WIEKER E free throw 1 - 2 made (3)
06:20	22 WHALEN S substitution out			
06:20	24 COLEMAN M substitution in			
06:20				21 SWANSON S substitution out
06:20				32 GUSE J substitution in
06:20		56-64	-8	5 WIEKER E free throw 2 - 2 made (4)
05:50	42 AGUILAR D 3pt FG , jump shot missed			
05:46	23 DOELY Z offensive rebound (10)			
05:40	23 DOELY Z 2pt FG second chance in the paint, hook shot made (19)	58-64	-6	
05:40	42 AGUILAR D assist (2)			
05:27		58-67	-9	15 FEAHN K 3pt FG , jump shot made (22)
05:27				4 MALO N assist (3)
05:16	23 DOELY Z turnover lost ball (2)			
05:16	42 AGUILAR D substitution out			
05:16	21 JENSEN T substitution in			
05:16				4 MALO N substitution out
05:16				21 SWANSON S substitution in
04:58	33 TSCHETTER J foul personal (3 - 6)			32 GUSE J foul drawn (3)
04:50				3 SCHOMMER J 3pt FG from turnover, jump shot missed
04:47	24 COLEMAN M defensive rebound (4)			
04:25	12 NELSON S turnover out of bounds (2)			
04:24	24 COLEMAN M substitution out			
04:24	22 WHALEN S substitution in			
04:24				32 GUSE J substitution out
04:24				4 MALO N substitution in
04:14				5 WIEKER E substitution out
04:14				22 BIEWEN A substitution in
03:57	22 WHALEN S steal (2)			4 MALO N turnover lost ball (3)
03:57	22 WHALEN S foul drawn (2)			22 BIEWEN A foul personal (2 - 5)
03:57				21 SWANSON S substitution out
03:57				32 GUSE J substitution in
03:57	33 TSCHETTER J 3pt FG , jump shot missed			
03:57	12 NELSON S offensive rebound (2)			
03:34	21 JENSEN T foul drawn (3)			22 BIEWEN A foul shooting (3 - 6)
03:34	21 JENSEN T free throw 1 - 3 made (1)	59-67	-8	
03:34	21 JENSEN T free throw 2 - 3 made (2)	60-67	-7	



Gust. Adolphus at Bethel (MN)

11/20/21 Robertson Center, St. Paul
2021-22 Men's Basketball

Game Time: 3:00 PM
Game Duration: 1:41
Attendance: 147

Officials: Andy Acosta, Mark Ricker, Jeff Haack

Game Time	BU	Score	Diff	GAC
03:34	21 JENSEN T free throw 3 - 3 made (3)	61-67	-6	
03:34				32 GUSE J substitution out
03:34				21 SWANSON S substitution in
03:34	Timeout 60 Sec			
03:34				22 BIEWEN A substitution out
03:34				5 WIEKER E substitution in
03:14	33 TSCHETTER J steal (2)			4 MALO N turnover bad pass (4)
02:48	33 TSCHETTER J turnover bad pass (1)			4 MALO N steal (4)
02:22				15 FEAHN K 2pt FG from turnover in the paint, layup missed
02:19	defensive dead ball rebound (6)			
02:19				21 SWANSON S substitution out
02:19				32 GUSE J substitution in
02:08	22 WHALEN S foul drawn (3)			5 WIEKER E foul personal (1 - 7)
02:08				32 GUSE J substitution out
02:08				21 SWANSON S substitution in
02:08	22 WHALEN S 1&1 free throw 1 made (8)	62-67	-5	
02:08	21 JENSEN T substitution out			
02:08	24 COLEMAN M substitution in			
02:08	22 WHALEN S 1&1 free throw 2 missed			
02:08	33 TSCHETTER J offensive rebound (2)			
02:02	22 WHALEN S substitution out			
02:02	24 COLEMAN M substitution out			
02:02	21 JENSEN T substitution in			
02:02	42 AGUILAR D substitution in			
02:02				21 SWANSON S substitution out
02:02				32 GUSE J substitution in
02:02				Timeout 60 Sec
01:56	12 NELSON S foul offensive (1 - 7)			5 WIEKER E foul drawn (2)
01:56	12 NELSON S turnover offensive (3)			
01:56	21 JENSEN T substitution out			
01:56	42 AGUILAR D substitution out			
01:56	22 WHALEN S substitution in			
01:56	24 COLEMAN M substitution in			
01:49				Timeout 30 Sec
01:26				3 SCHOMMER J 2pt FG from turnover outside the paint, jump shot missed
01:23				15 FEAHN K offensive rebound (4)
01:22	23 DOELY Z steal (1)			15 FEAHN K turnover lost ball (2)
01:03	24 COLEMAN M 2pt FG from turnover in the paint, floating jump shot missed			
01:02	23 DOELY Z offensive rebound (11)			
01:02	23 DOELY Z 2pt FG from turnover second chance in the paint, layup missed			
01:02	33 TSCHETTER J offensive rebound (3)			
01:02	33 TSCHETTER J foul drawn (2)			5 WIEKER E foul shooting (2 - 8)
01:02	33 TSCHETTER J 1&1 free throw 1 made (12)	63-67	-4	
01:02	33 TSCHETTER J 1&1 free throw 2 made (13)	64-67	-3	
00:35				3 SCHOMMER J 2pt FG in the paint, jump shot missed
00:33	23 DOELY Z defensive rebound (12)			
00:29	Timeout 60 Sec			



Gust. Adolphus at Bethel (MN)

11/20/21 Robertson Center, St. Paul
2021-22 Men's Basketball

Game Time: 3:00 PM
Game Duration: 1:41
Attendance: 147

Officials: Andy Acosta, Mark Ricker, Jeff Haack

Game Time	BU	Score	Diff	GAC
00:29	22 WHALEN S substitution out			
00:29	24 COLEMAN M substitution out			
00:29	21 JENSEN T substitution in			
00:29	42 AGUILAR D substitution in			
00:17	42 AGUILAR D turnover bad pass (3)			32 GUSE J steal (1)
00:15	42 AGUILAR D foul personal (3 - 8)			4 MALO N foul drawn (1)
00:15		64-68	-4	4 MALO N 1&1 free throw 1 made (5)
00:15		64-69	-5	4 MALO N 1&1 free throw 2 made (6)
00:15				Timeout 60 Sec
00:05	23 DOELY Z 3pt FG , jump shot made (22)	67-69	-2	
00:05	12 NELSON S assist (4)			
00:05	Timeout 60 Sec			
00:05				32 GUSE J substitution out
00:05				21 SWANSON S substitution in
00:05				Timeout 60 Sec
00:05	24 COLEMAN M substitution in			
00:05	42 AGUILAR D substitution out			
00:05	24 COLEMAN M foul personal (3 - 9)			5 WIEKER E foul drawn (3)
00:04		67-70	-3	5 WIEKER E 1&1 free throw 1 made (5)
00:04				Timeout 60 Sec
00:04		67-71	-4	5 WIEKER E 1&1 free throw 2 made (6)
00:01	21 JENSEN T 3pt FG , jump shot missed			
00:01				15 FEAHN K defensive rebound (5)
END OF GAME				
BU 67-71 GAC				



Gust. Adolphus at Bethel (MN)

11/20/21 Robertson Center, St. Paul
2021-22 Men's Basketball

Game Time: 3:00 PM
Game Duration: 1:41
Attendance: 147

Officials: Andy Acosta, Mark Ricker, Jeff Haack

Gust. Adolphus - 38

NO.	Name	F	Min	FG			Rebounds			Fouls		TP	AS	TO	ST	Blocks		+/-
				M-A	M-A	M-A	OR	DR	TOT	PF	FD					BS	BA	
4	Nolan Malo	F	13:35	1-2	0-0	2-2	0	0	0	1	1	4	1	3	3	0	0	1
15	Kaleb Feahn	F	15:07	5-7	2-3	0-0	1	1	2	1	1	12	1	2	1	0	0	6
22	Adam Biewen	F	10:23	0-1	0-0	0-0	0	1	1	3	0	0	0	1	1	0	0	1
32	Jake Guse	C	10:56	0-0	0-0	0-0	0	1	1	0	1	0	1	0	1	0	0	-1
3	Jordan Schommer	G	15:44	3-7	1-2	0-0	0	0	0	0	0	7	0	1	0	0	0	2
5	Evan Wieker		14:30	0-0	0-0	4-4	0	1	1	2	3	4	1	0	0	0	0	11
33	Peter Lundquist		05:09	0-0	0-0	0-0	0	0	0	1	0	0	1	0	0	1	0	7
1	Brady Kienitz		04:16	0-1	0-1	0-0	1	0	1	0	0	0	0	1	0	0	0	7
21	Spencer Swanson		10:20	5-6	0-1	1-1	1	0	1	0	3	11	0	0	0	0	0	11
Team							0	0	0			0		0				
Totals				14-24	3-7	7-7	3	4	7	8	9	38	5	8	6	1	0	9

Shooting By Period		
2 nd FG%	14-24	58.3%
3PT%	3-7	42.9%
FT%	7-7	100%
GM FG%	14-24	58.3%
3PT%	3-7	42.9%
FT%	7-7	100.0%

Dead Ball Rebounds: 0, 1

Technical Fouls::NONE

Bethel (MN) - 29

NO.	Name	F	Min	FG			Rebounds			Fouls		TP	AS	TO	ST	Blocks		+/-
				M-A	M-A	M-A	OR	DR	TOT	PF	FD					BS	BA	
23	Zach Doely	F	16:54	2-5	1-1	2-2	4	4	8	0	2	7	1	2	1	0	0	-6
33	Jaren Tschetter	F	18:50	3-6	2-4	2-2	2	0	2	1	2	10	0	1	2	0	0	-5
20	Jake Wald	G	05:50	0-0	0-0	0-0	0	0	0	0	0	0	0	1	1	0	0	-2
21	Tommy Jensen	G	13:54	0-1	0-1	3-3	0	0	0	0	2	3	0	3	0	0	0	-5
22	Solomon Whalen	G	13:58	1-2	0-0	1-2	1	1	2	3	2	3	1	2	1	0	0	1
12	Sam Nelson		14:10	1-3	0-2	0-0	1	0	1	1	0	2	2	2	1	0	0	-7
42	Dom Aguilar		07:18	0-1	0-1	0-0	0	0	0	3	0	0	2	2	0	0	0	-10
24	Myles Coleman		06:19	1-4	0-0	0-0	1	1	2	1	0	2	0	1	0	0	1	-6
10	Cole Jacobson		02:47	1-1	0-0	0-0	1	0	1	0	0	2	0	1	0	0	0	-5
Team							0	0	0			0		0				
Totals				9-23	3-9	8-9	10	6	16	9	8	29	6	15	6	0	1	-9

Shooting By Period		
2 nd FG%	9-23	39.1%
3PT%	3-9	33.3%
FT%	8-9	88.9%
GM FG%	9-23	39.1%
3PT%	3-9	33.3%
FT%	8-9	88.9%

Dead Ball Rebounds: 0, 1

Technical Fouls::NONE

	GAC	BU
Biggest lead	9 (2 nd 5:27)	7 (2 nd 16:27)
Best Scoring Run	8(2 nd 7:06)	6(2 nd 1:02)
Lead Changes	1	
Times Tied	3	
Time with Lead	10:57	07:17

	GAC	BU
Points from		
Turnovers	15	2
Paint	20	12
Second Chance	3	13
Fast Breaks	6	0
Bench	15	6

	Period by Period Scoring		
	1st	2nd	TOT
GAC	33	38	71
BU	38	29	67



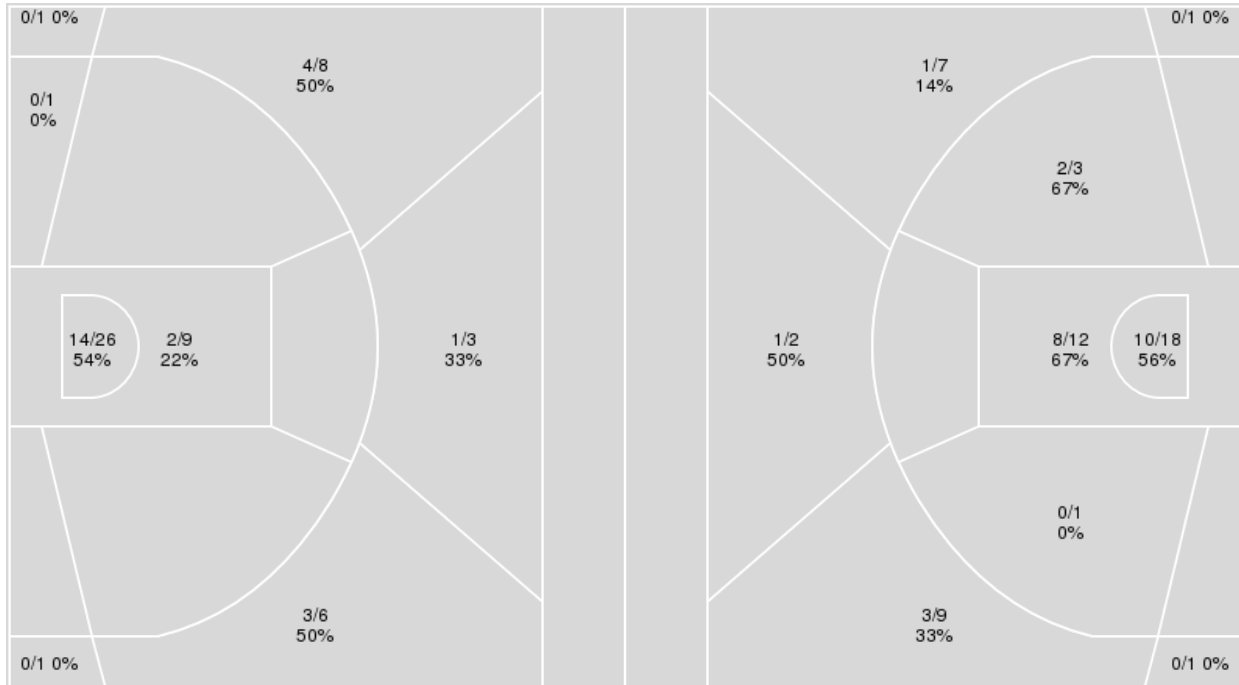
Officials: Andy Acosta, Mark Ricker, Jeff Haack

{ Players => All; } FG Types => All; Results => All;

{ Players => All; } FG Types => All; Results => All;

Bethel (MN)

Gust. Adolphus



Bethel (MN)	M/A	%
Field Goals	24/55	44
2 Points	16/36	44
3 Points	8/19	42
Free Throws	11/14	79

Gust. Adolphus	M/A	%
Field Goals	25/54	46
2 Points	20/34	59
3 Points	5/20	25
Free Throws	16/18	89

**Gust. Adolphus at Bethel (MN)**11/20/21 Robertson Center, St. Paul
2021-22 Men's Basketball

Game Time: 3:00 PM

Game Duration: 1:41

Attendance: 147

Officials: Andy Acosta, Mark Ricker, Jeff Haack

Gust. Adolphus

No	Name	Mins		Score		Points Diff		Points per Min		Assists		Rebounds		Steals		Turnovers	
		On	Off	On	Off	On	Off	On	Off	On	Off	On	Off	On	Off	On	Off
1	Brady Kienitz	10:47	29:13	26 - 17	45 - 50	9	-5	2.41	1.54	4	8	7	18	2	6	1	13
3	Jordan Schommer	29:13	10:47	45 - 50	26 - 17	-5	9	1.54	2.41	8	4	18	7	6	2	13	1
4	Nolan Malo	25:07	14:53	40 - 43	31 - 24	-3	7	1.59	2.08	6	6	13	12	8	0	9	5
5	Evan Wieker	25:51	14:09	44 - 38	27 - 29	6	-2	1.70	1.91	8	4	16	9	4	4	12	2
15	Kaleb Feahn	27:38	12:22	54 - 49	17 - 18	5	-1	1.95	1.37	9	3	17	8	6	2	5	9
21	Spencer Swanson	21:09	18:51	36 - 38	35 - 29	-2	6	1.70	1.86	6	6	13	12	2	6	8	6
22	Adam Biewen	26:31	13:29	44 - 47	27 - 20	-3	7	1.66	2.00	7	5	17	8	6	2	11	3
32	Jake Guse	21:50	18:10	41 - 32	30 - 35	9	-5	1.88	1.65	7	5	16	9	6	2	6	8
33	Peter Lundquist	11:54	28:06	25 - 21	46 - 46	4	0	2.10	1.64	5	7	8	17	0	8	5	9

Bethel (MN)

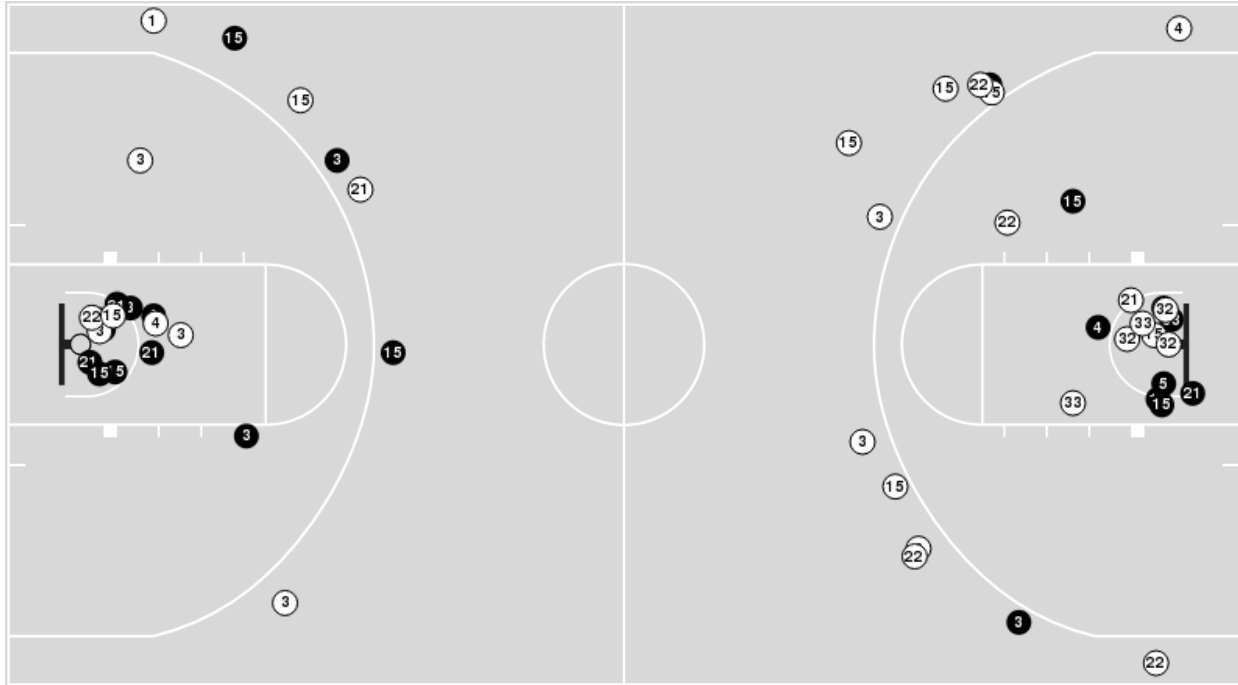
No	Name	Mins		Score		Points Diff		Points per Min		Assists		Rebounds		Steals		Turnovers	
		On	Off	On	Off	On	Off	On	Off	On	Off	On	Off	On	Off	On	Off
10	Cole Jacobson	09:43	30:17	16 - 20	51 - 51	-4	0	1.65	1.68	3	10	4	24	2	7	3	17
12	Sam Nelson	25:50	14:10	48 - 49	19 - 22	-1	-3	1.86	1.34	10	3	21	7	7	2	9	11
20	Jake Wald	12:33	27:27	15 - 21	52 - 50	-6	2	1.20	1.89	4	9	6	22	2	7	11	9
21	Tommy Jensen	21:15	18:45	32 - 40	35 - 31	-8	4	1.51	1.87	6	7	10	18	4	5	15	5
22	Solomon Whalen	26:01	13:59	38 - 40	29 - 31	-2	-2	1.46	2.07	7	6	22	6	6	3	12	8
23	Zach Doely	35:32	04:28	61 - 60	6 - 11	1	-5	1.72	1.34	12	1	26	2	8	1	19	1
24	Myles Coleman	17:13	22:47	30 - 31	37 - 40	-1	-3	1.74	1.62	5	8	18	10	4	5	6	14
33	Jaren Tschetter	32:11	07:49	56 - 56	11 - 15	0	-4	1.74	1.41	10	3	19	9	8	1	17	3
34	Gabe Siler	02:59	37:01	6 - 5	61 - 66	1	-5	2.01	1.65	0	13	1	27	0	9	0	20
42	Dom Aguilar	16:43	23:17	33 - 33	34 - 38	0	-4	1.97	1.46	8	5	13	15	4	5	8	12



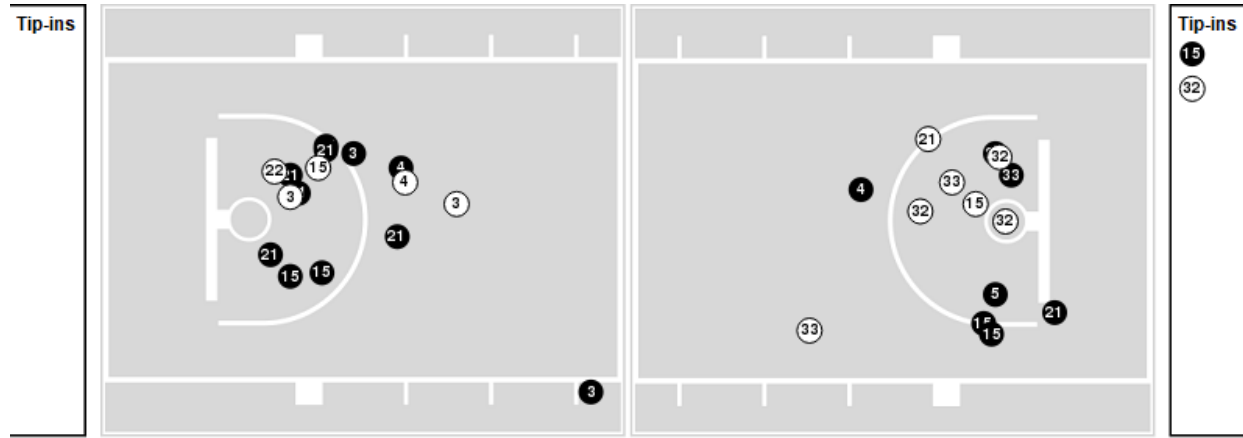
Officials: Andy Acosta, Mark Ricker, Jeff Haack

Players => AllFG Types=>AllResults=>All
Gust. Adolphus

All Field Goals



Blow Up Chart



● Made ○ Missed N - Player Number

Gust. Adolphus	M/A	%
Field Goals	25/54	46
2 Points	20/34	59
3 Points	5/20	25
Free Throws	16/18	89

Gust. Adolphus	M/A	%
Points in the Paint	36 (18 / 30)	60
Fast Break Points	8 (6/6)	100
Second Chance Points	8 (6/10)	60
Effective FG%	51	

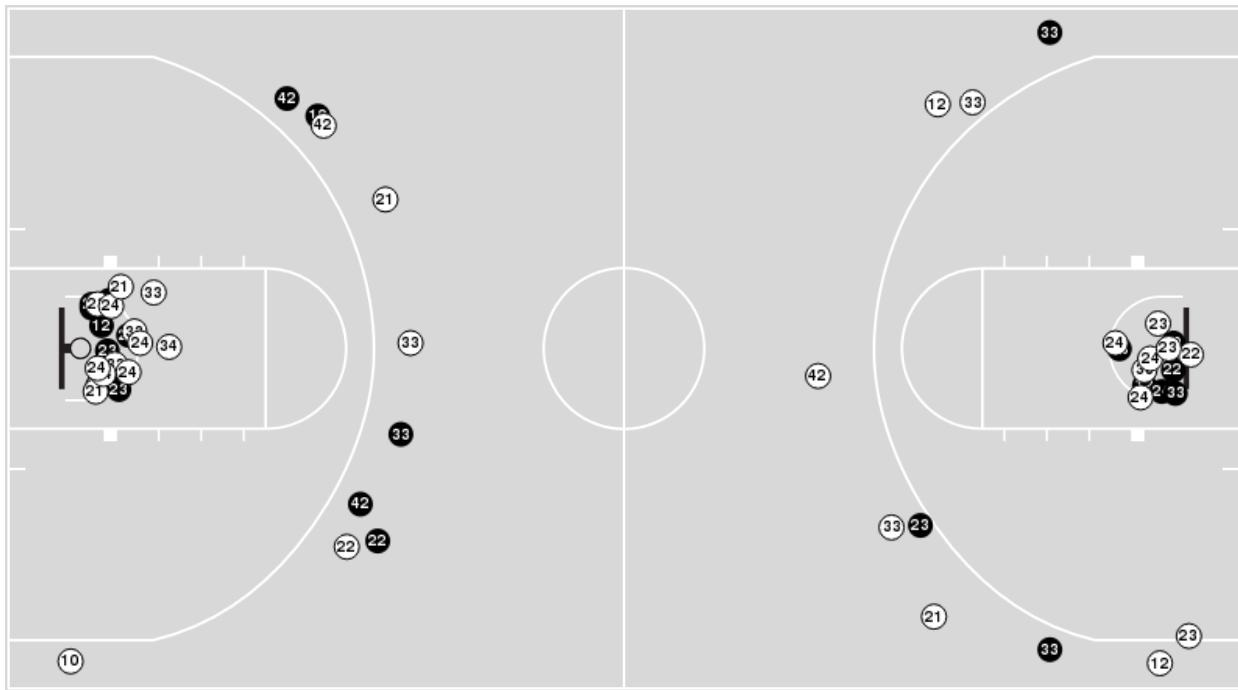


Officials: Andy Acosta, Mark Ricker, Jeff Haack

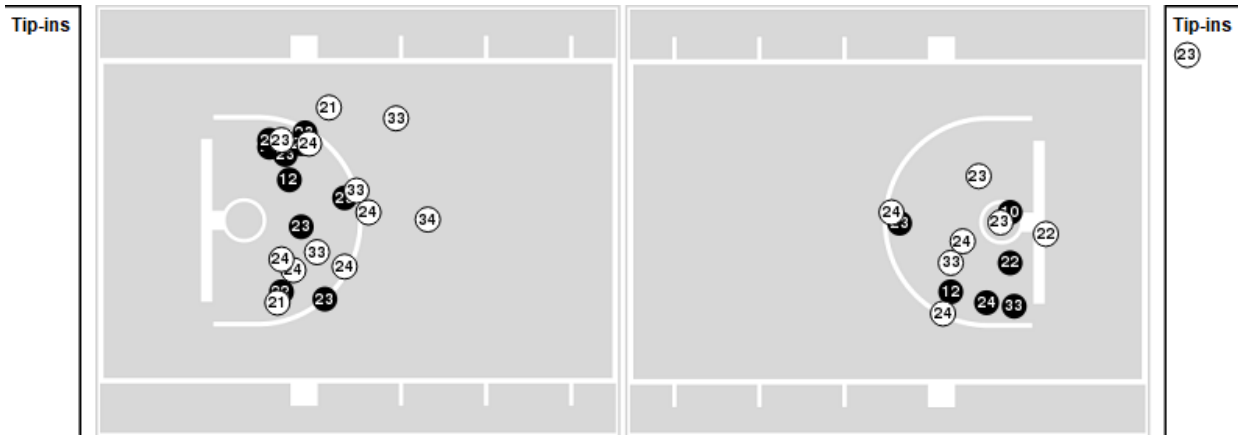
Players => AllFG Types=>AllResults=>All

Bethel (MN)

All Field Goals



Blow Up Chart



● Made ○ Missed N - Player Number

Bethel (MN)	M/A	%
Field Goals	24/55	44
2 Points	16/36	44
3 Points	8/19	42
Free Throws	11/14	79

Bethel (MN)	M/A	%
Points in the Paint	32 (16 / 35)	46
Fast Break Points	9 (4/5)	80
Second Chance Points	18 (12/15)	80
Effective FG%	51	



Gust. Adolphus at Bethel (MN)

11/20/21 Robertson Center, St. Paul
2021-22 Men's Basketball

Game Time: 3:00 PM
Game Duration: 1:41
Attendance: 147

Officials: Andy Acosta, Mark Ricker, Jeff Haack

Gust. Adolphus

Lineup	Quarter On	Time On	Quarter Off	Time Off	Time on Court	Score	Score Diff	Reb	Stl	Tov	Ass	PPP
3- Schommer J/ 4- Malo N/ 15- Feahn K/ 22- Biewen A/ 32- Guse J/	1	20:00	1	16:59	03:01	3-5	-2	4	0	0	1	0.6000
3- Schommer J/ 5- Wieker E/ 22- Biewen A/ 32- Guse J/ 33- Lundquist P/	1	16:59	1	15:47	01:12	3-0	3	1	0	1	1	1.5000
3- Schommer J/ 5- Wieker E/ 21- Swanson S/ 22- Biewen A/ 33- Lundquist P/	1	15:47	1	12:34	03:13	4-9	-5	2	0	2	1	0.6667
1- Kienitz B/ 4- Malo N/ 5- Wieker E/ 15- Feahn K/ 21- Swanson S/	1	12:34	1	11:41	00:53	2-2	0	0	0	0	0	2.2727
1- Kienitz B/ 4- Malo N/ 15- Feahn K/ 22- Biewen A/ 32- Guse J/	1	11:41	1	08:02	03:39	10-4	6	3	2	0	2	1.4286
3- Schommer J/ 4- Malo N/ 5- Wieker E/ 22- Biewen A/ 32- Guse J/	1	08:02	1	06:54	01:08	3-2	1	0	0	0	1	1.5957
3- Schommer J/ 5- Wieker E/ 15- Feahn K/ 21- Swanson S/ 33- Lundquist P/	1	06:54	1	04:34	02:20	5-6	-1	2	0	1	1	0.9398
3- Schommer J/ 5- Wieker E/ 15- Feahn K/ 21- Swanson S/ 32- Guse J/	1	04:34	1	03:55	00:39	0-0	0	3	0	0	0	0.0000
1- Kienitz B/ 15- Feahn K/ 21- Swanson S/ 22- Biewen A/ 32- Guse J/	1	03:55	1	03:15	00:40	1-0	1	1	0	0	0	0.6944
1- Kienitz B/ 4- Malo N/ 15- Feahn K/ 21- Swanson S/ 22- Biewen A/	1	03:15	1	03:15	00:00	0-0	0	0	0	0	0	0.0000
1- Kienitz B/ 15- Feahn K/ 21- Swanson S/ 22- Biewen A/ 32- Guse J/	1	03:15	1	02:51	00:24	0-1	-1	0	0	0	0	0.0000
1- Kienitz B/ 4- Malo N/ 15- Feahn K/ 21- Swanson S/ 22- Biewen A/	1	02:51	1	01:56	00:55	0-6	-6	0	0	0	0	0.0000
1- Kienitz B/ 15- Feahn K/ 21- Swanson S/ 22- Biewen A/ 32- Guse J/	1	01:56	1	01:56	00:00	2-0	2	0	0	0	0	2.2727
3- Schommer J/ 4- Malo N/ 5- Wieker E/ 21- Swanson S/ 22- Biewen A/	1	01:56	1	00:48	01:08	0-0	0	1	0	1	0	0.0000
3- Schommer J/ 4- Malo N/ 5- Wieker E/ 22- Biewen A/ 32- Guse J/	1	00:48	1	00:36	00:11	0-0	0	1	0	1	0	0.0000
3- Schommer J/ 4- Malo N/ 5- Wieker E/ 21- Swanson S/ 22- Biewen A/	1	00:36	2	20:00	00:37	0-3	-3	0	0	0	0	0.0000
3- Schommer J/ 4- Malo N/ 15- Feahn K/ 22- Biewen A/ 32- Guse J/	2	20:00	2	16:27	03:33	6-6	0	1	2	1	0	0.8571
3- Schommer J/ 4- Malo N/ 5- Wieker E/ 22- Biewen A/ 33- Lundquist P/	2	16:27	2	15:34	00:53	2-2	0	0	0	0	0	2.0000
1- Kienitz B/ 5- Wieker E/ 21- Swanson S/ 22- Biewen A/ 33- Lundquist P/	2	15:34	2	14:04	01:30	3-2	1	2	0	1	0	1.2295
1- Kienitz B/ 5- Wieker E/ 15- Feahn K/ 21- Swanson S/ 33- Lundquist P/	2	14:04	2	11:18	02:46	8-2	6	1	0	0	2	2.0000
3- Schommer J/ 5- Wieker E/ 15- Feahn K/ 21- Swanson S/ 33- Lundquist P/	2	11:18	2	11:18	00:00	0-0	0	0	0	0	0	0.0000
3- Schommer J/ 15- Feahn K/ 21- Swanson S/ 22- Biewen A/ 32- Guse J/	2	11:18	2	10:01	01:17	5-4	1	0	0	0	1	2.5000
3- Schommer J/ 4- Malo N/ 5- Wieker E/ 22- Biewen A/ 32- Guse J/	2	10:01	2	08:21	01:40	2-0	2	1	1	2	0	0.6667
3- Schommer J/ 4- Malo N/ 5- Wieker E/ 21- Swanson S/ 22- Biewen A/	2	08:21	2	07:31	00:50	0-0	0	0	1	1	0	0.0000
3- Schommer J/ 4- Malo N/ 5- Wieker E/ 15- Feahn K/ 21- Swanson S/	2	07:31	2	06:20	01:11	4-2	2	0	0	0	1	2.7778
3- Schommer J/ 4- Malo N/ 5- Wieker E/ 15- Feahn K/ 32- Guse J/	2	06:20	2	05:16	01:04	4-2	2	0	0	0	1	2.7778
3- Schommer J/ 5- Wieker E/ 15- Feahn K/ 21- Swanson S/ 32- Guse J/	2	05:16	2	04:24	00:52	0-0	0	0	0	0	0	0.0000
3- Schommer J/ 4- Malo N/ 5- Wieker E/ 15- Feahn K/ 21- Swanson S/	2	04:24	2	04:14	00:10	0-0	0	0	0	0	0	0.0000
3- Schommer J/ 4- Malo N/ 15- Feahn K/ 21- Swanson S/ 22- Biewen A/	2	04:14	2	03:57	00:17	0-0	0	0	0	1	0	0.0000
3- Schommer J/ 4- Malo N/ 15- Feahn K/ 22- Biewen A/ 32- Guse J/	2	03:57	2	03:34	00:23	0-3	-3	0	0	0	0	0.0000
3- Schommer J/ 4- Malo N/ 15- Feahn K/ 21- Swanson S/ 22- Biewen A/	2	03:34	2	03:34	00:00	0-0	0	0	0	0	0	0.0000
3- Schommer J/ 4- Malo N/ 5- Wieker E/ 15- Feahn K/ 21- Swanson S/	2	03:34	2	02:19	01:15	0-0	0	0	1	1	0	0.0000
3- Schommer J/ 4- Malo N/ 5- Wieker E/ 15- Feahn K/ 32- Guse J/	2	02:19	2	02:08	00:11	0-0	0	0	0	0	0	0.0000
3- Schommer J/ 4- Malo N/ 5- Wieker E/ 15- Feahn K/ 21- Swanson S/	2	02:08	2	02:02	00:06	0-1	-1	0	0	0	0	0.0000
3- Schommer J/ 4- Malo N/ 5- Wieker E/ 15- Feahn K/ 32- Guse J/	2	02:02	2	00:05	01:56	2-5	-3	1	1	1	0	0.6944
3- Schommer J/ 4- Malo N/ 5- Wieker E/ 15- Feahn K/ 21- Swanson S/	2	00:05	2	00:00	00:06	2-0	2	1	0	0	0	2.2727



Gust. Adolphus at Bethel (MN)

11/20/21 Robertson Center, St. Paul
2021-22 Men's Basketball

Game Time: 3:00 PM
Game Duration: 1:41
Attendance: 147

Officials: Andy Acosta, Mark Ricker, Jeff Haack

Bethel (MN)

Lineup	Quarter On	Time On	Quarter Off	Time Off	Time on Court	Score	Score Diff	Reb	Stl	Tov	Ass	PPP
20- Wald J/ 21- Jensen T/ 22- Whalen S/ 23- Doely Z/ 33- Tschetter J/	1	20:00	1	15:47	04:13	5-6	-1	2	0	2	0	0.6250
12- Nelson S/ 23- Doely Z/ 24- Coleman M/ 33- Tschetter J/ 42- Aguilar D/	1	15:47	1	12:34	03:13	9-4	5	1	2	0	1	1.8000
12- Nelson S/ 22- Whalen S/ 23- Doely Z/ 24- Coleman M/ 42- Aguilar D/	1	12:34	1	09:24	03:10	4-8	-4	3	0	2	1	0.8000
12- Nelson S/ 20- Wald J/ 21- Jensen T/ 22- Whalen S/ 24- Coleman M/	1	09:24	1	09:13	00:11	0-0	0	0	0	0	0	0.0000
12- Nelson S/ 20- Wald J/ 21- Jensen T/ 22- Whalen S/ 33- Tschetter J/	1	09:13	1	08:02	01:11	2-4	-2	0	0	0	1	1.0000
10- Jacobson C/ 20- Wald J/ 21- Jensen T/ 23- Doely Z/ 33- Tschetter J/	1	08:02	1	06:54	01:08	2-3	-1	0	0	1	1	0.6667
10- Jacobson C/ 21- Jensen T/ 23- Doely Z/ 33- Tschetter J/ 34- Siler G/	1	06:54	1	06:16	00:38	2-1	1	0	0	0	0	2.0000
10- Jacobson C/ 23- Doely Z/ 24- Coleman M/ 33- Tschetter J/ 34- Siler G/	1	06:16	1	03:55	02:21	4-4	0	1	0	0	0	0.9259
10- Jacobson C/ 12- Nelson S/ 22- Whalen S/ 23- Doely Z/ 24- Coleman M/	1	03:55	1	03:15	00:40	0-1	-1	1	0	0	0	0.0000
12- Nelson S/ 22- Whalen S/ 23- Doely Z/ 24- Coleman M/ 42- Aguilar D/	1	03:15	1	03:15	00:00	0-0	0	0	0	0	0	0.0000
10- Jacobson C/ 12- Nelson S/ 22- Whalen S/ 23- Doely Z/ 24- Coleman M/	1	03:15	1	03:02	00:13	1-0	1	0	0	0	0	2.2727
12- Nelson S/ 22- Whalen S/ 23- Doely Z/ 24- Coleman M/ 42- Aguilar D/	1	03:02	1	01:56	01:06	6-0	6	3	0	0	2	3.0000
10- Jacobson C/ 12- Nelson S/ 22- Whalen S/ 23- Doely Z/ 24- Coleman M/	1	01:56	1	01:56	00:00	0-2	-2	0	0	0	0	0.0000
10- Jacobson C/ 12- Nelson S/ 22- Whalen S/ 23- Doely Z/ 42- Aguilar D/	1	01:56	1	00:36	01:19	0-0	0	1	1	0	0	0.0000
10- Jacobson C/ 12- Nelson S/ 23- Doely Z/ 33- Tschetter J/ 42- Aguilar D/	1	00:36	2	20:00	00:37	3-0	3	0	0	0	1	3.0000
20- Wald J/ 21- Jensen T/ 22- Whalen S/ 23- Doely Z/ 33- Tschetter J/	2	20:00	2	16:40	03:20	6-6	0	3	1	3	2	1.0000
12- Nelson S/ 21- Jensen T/ 22- Whalen S/ 23- Doely Z/ 33- Tschetter J/	2	16:40	2	15:34	01:06	2-2	0	1	0	0	0	1.0638
12- Nelson S/ 21- Jensen T/ 22- Whalen S/ 33- Tschetter J/ 42- Aguilar D/	2	15:34	2	14:28	01:06	2-3	-1	0	0	0	0	2.0000
12- Nelson S/ 22- Whalen S/ 24- Coleman M/ 33- Tschetter J/ 42- Aguilar D/	2	14:28	2	12:28	02:00	2-4	-2	2	1	1	0	0.6667
12- Nelson S/ 21- Jensen T/ 23- Doely Z/ 24- Coleman M/ 42- Aguilar D/	2	12:28	2	11:44	00:44	0-2	-2	1	0	1	0	0.0000
10- Jacobson C/ 12- Nelson S/ 21- Jensen T/ 23- Doely Z/ 42- Aguilar D/	2	11:44	2	11:18	00:26	0-2	-2	0	0	0	0	0.0000
10- Jacobson C/ 12- Nelson S/ 21- Jensen T/ 23- Doely Z/ 33- Tschetter J/	2	11:18	2	10:01	01:17	4-5	-1	1	0	0	1	2.0000
10- Jacobson C/ 20- Wald J/ 21- Jensen T/ 23- Doely Z/ 33- Tschetter J/	2	10:01	2	08:57	01:04	0-2	-2	0	1	2	0	0.0000
20- Wald J/ 21- Jensen T/ 22- Whalen S/ 23- Doely Z/ 33- Tschetter J/	2	08:57	2	07:49	01:08	0-0	0	0	0	2	0	0.0000
20- Wald J/ 22- Whalen S/ 23- Doely Z/ 33- Tschetter J/ 42- Aguilar D/	2	07:49	2	07:31	00:18	0-0	0	1	0	1	0	0.0000
12- Nelson S/ 22- Whalen S/ 23- Doely Z/ 33- Tschetter J/ 42- Aguilar D/	2	07:31	2	06:20	01:11	2-4	-2	0	0	0	1	2.0000
12- Nelson S/ 23- Doely Z/ 24- Coleman M/ 33- Tschetter J/ 42- Aguilar D/	2	06:20	2	05:16	01:04	2-4	-2	1	0	1	1	1.0000
12- Nelson S/ 21- Jensen T/ 23- Doely Z/ 24- Coleman M/ 33- Tschetter J/	2	05:16	2	04:24	00:52	0-0	0	1	0	1	0	0.0000
12- Nelson S/ 21- Jensen T/ 22- Whalen S/ 23- Doely Z/ 33- Tschetter J/	2	04:24	2	02:08	02:16	4-0	4	1	2	1	0	1.4493
12- Nelson S/ 22- Whalen S/ 23- Doely Z/ 24- Coleman M/ 33- Tschetter J/	2	02:08	2	02:02	00:06	0-0	0	1	0	0	0	0.0000
12- Nelson S/ 21- Jensen T/ 23- Doely Z/ 33- Tschetter J/ 42- Aguilar D/	2	02:02	2	01:56	00:06	0-0	0	0	0	1	0	0.0000
12- Nelson S/ 22- Whalen S/ 23- Doely Z/ 24- Coleman M/ 33- Tschetter J/	2	01:56	2	00:29	01:27	2-0	2	3	1	0	0	2.2727
12- Nelson S/ 21- Jensen T/ 23- Doely Z/ 33- Tschetter J/ 42- Aguilar D/	2	00:29	2	00:05	00:23	3-2	1	0	0	1	1	1.5000
12- Nelson S/ 21- Jensen T/ 23- Doely Z/ 24- Coleman M/ 33- Tschetter J/	2	00:05	2	00:00	00:06	0-2	-2	0	0	0	0	0.0000



Officials: Andy Acosta, Mark Ricker, Jeff Haack

Gust. Adolphus

Lineup	Time	Score	Score Diff	Pts/Min	Reb	Stl	Tov	Ass	PPP
3- Schommer J/ 4- Malo N/ 15- Feahn K/ 22- Biewen A/ 32- Guse J/	06:57	9-14	-5	1.2950	5	2	1	1	0.7500
1- Kienitz B/ 4- Malo N/ 15- Feahn K/ 22- Biewen A/ 32- Guse J/	03:39	10-4	6	2.7397	3	2	0	2	1.4286
3- Schommer J/ 5- Wieker E/ 21- Swanson S/ 22- Biewen A/ 33- Lundquist P/	03:13	4-9	-5	1.2435	2	0	2	1	0.6667
3- Schommer J/ 4- Malo N/ 5- Wieker E/ 15- Feahn K/ 32- Guse J/	03:11	6-7	-1	1.8848	1	1	1	1	1.3889
3- Schommer J/ 4- Malo N/ 5- Wieker E/ 22- Biewen A/ 32- Guse J/	02:59	5-2	3	1.6760	2	1	3	1	0.8503
3- Schommer J/ 4- Malo N/ 5- Wieker E/ 15- Feahn K/ 21- Swanson S/	02:48	6-3	3	2.1429	1	1	1	1	1.3889
1- Kienitz B/ 5- Wieker E/ 15- Feahn K/ 21- Swanson S/ 33- Lundquist P/	02:46	8-2	6	2.8916	1	0	0	2	2.0000
3- Schommer J/ 4- Malo N/ 5- Wieker E/ 21- Swanson S/ 22- Biewen A/	02:35	0-3	-3	0.0000	1	1	2	0	0.0000
3- Schommer J/ 5- Wieker E/ 15- Feahn K/ 21- Swanson S/ 33- Lundquist P/	02:20	5-6	-1	2.1429	2	0	1	1	0.9398
3- Schommer J/ 5- Wieker E/ 15- Feahn K/ 21- Swanson S/ 32- Guse J/	01:31	0-0	0	0.0000	3	0	0	0	0.0000
1- Kienitz B/ 5- Wieker E/ 21- Swanson S/ 22- Biewen A/ 33- Lundquist P/	01:30	3-2	1	2.0000	2	0	1	0	1.2295
3- Schommer J/ 15- Feahn K/ 21- Swanson S/ 22- Biewen A/ 32- Guse J/	01:17	5-4	1	3.8961	0	0	0	1	2.5000
3- Schommer J/ 5- Wieker E/ 22- Biewen A/ 32- Guse J/ 33- Lundquist P/	01:12	3-0	3	2.5000	1	0	1	1	1.5000
1- Kienitz B/ 15- Feahn K/ 21- Swanson S/ 22- Biewen A/ 32- Guse J/	01:04	3-1	2	2.8125	1	0	0	0	0.9036
1- Kienitz B/ 4- Malo N/ 15- Feahn K/ 21- Swanson S/ 22- Biewen A/	00:55	0-6	-6	0.0000	0	0	0	0	0.0000
1- Kienitz B/ 4- Malo N/ 5- Wieker E/ 15- Feahn K/ 21- Swanson S/	00:53	2-2	0	2.2642	0	0	0	0	2.2727
3- Schommer J/ 4- Malo N/ 5- Wieker E/ 22- Biewen A/ 33- Lundquist P/	00:53	2-2	0	2.2642	0	0	0	0	2.0000
3- Schommer J/ 4- Malo N/ 15- Feahn K/ 21- Swanson S/ 22- Biewen A/	00:17	0-0	0	0.0000	0	0	1	0	0.0000



Officials: Andy Acosta, Mark Ricker, Jeff Haack

Bethel (MN)

Lineup	Time	Score	Score Diff	Pts/Min	Reb	Stl	Tov	Ass	PPP
20- Wald J/ 21- Jensen T/ 22- Whalen S/ 23- Doely Z/ 33- Tschetter J/	08:41	11-12	-1	1.2668	5	1	7	2	0.6471
12- Nelson S/ 23- Doely Z/ 24- Coleman M/ 33- Tschetter J/ 42- Aguilar D/	04:17	11-8	3	2.5681	2	2	1	2	1.5714
12- Nelson S/ 22- Whalen S/ 23- Doely Z/ 24- Coleman M/ 42- Aguilar D/	04:16	10-8	2	2.3438	6	0	2	3	1.4286
12- Nelson S/ 21- Jensen T/ 22- Whalen S/ 23- Doely Z/ 33- Tschetter J/	03:22	6-2	4	1.7822	2	2	1	0	1.2931
10- Jacobson C/ 23- Doely Z/ 24- Coleman M/ 33- Tschetter J/ 34- Siler G/	02:21	4-4	0	1.7021	1	0	0	0	0.9259
10- Jacobson C/ 20- Wald J/ 21- Jensen T/ 23- Doely Z/ 33- Tschetter J/	02:12	2-5	-3	0.9091	0	1	3	1	0.4000
12- Nelson S/ 22- Whalen S/ 24- Coleman M/ 33- Tschetter J/ 42- Aguilar D/	02:00	2-4	-2	1.0000	2	1	1	0	0.6667
12- Nelson S/ 22- Whalen S/ 23- Doely Z/ 24- Coleman M/ 33- Tschetter J/	01:33	2-0	2	1.2903	4	1	0	0	6.2500
10- Jacobson C/ 12- Nelson S/ 22- Whalen S/ 23- Doely Z/ 42- Aguilar D/	01:19	0-0	0	0.0000	1	1	0	0	0.0000
10- Jacobson C/ 12- Nelson S/ 21- Jensen T/ 23- Doely Z/ 33- Tschetter J/	01:17	4-5	-1	3.1169	1	0	0	1	2.0000
12- Nelson S/ 20- Wald J/ 21- Jensen T/ 22- Whalen S/ 33- Tschetter J/	01:11	2-4	-2	1.6901	0	0	0	1	1.0000
12- Nelson S/ 22- Whalen S/ 23- Doely Z/ 33- Tschetter J/ 42- Aguilar D/	01:11	2-4	-2	1.6901	0	0	0	1	2.0000
12- Nelson S/ 21- Jensen T/ 22- Whalen S/ 33- Tschetter J/ 42- Aguilar D/	01:06	2-3	-1	1.8182	0	0	0	0	2.0000
12- Nelson S/ 21- Jensen T/ 23- Doely Z/ 24- Coleman M/ 33- Tschetter J/	00:58	0-2	-2	0.0000	1	0	1	0	0.0000
10- Jacobson C/ 12- Nelson S/ 22- Whalen S/ 23- Doely Z/ 24- Coleman M/	00:53	1-3	-2	1.1321	1	0	0	0	0.5319
12- Nelson S/ 21- Jensen T/ 23- Doely Z/ 24- Coleman M/ 42- Aguilar D/	00:44	0-2	-2	0.0000	1	0	1	0	0.0000
10- Jacobson C/ 21- Jensen T/ 23- Doely Z/ 33- Tschetter J/ 34- Siler G/	00:38	2-1	1	3.1579	0	0	0	0	2.0000
10- Jacobson C/ 12- Nelson S/ 23- Doely Z/ 33- Tschetter J/ 42- Aguilar D/	00:37	3-0	3	4.8649	0	0	0	1	3.0000
12- Nelson S/ 21- Jensen T/ 23- Doely Z/ 33- Tschetter J/ 42- Aguilar D/	00:29	3-2	1	6.2069	0	0	2	1	1.0000
10- Jacobson C/ 12- Nelson S/ 21- Jensen T/ 23- Doely Z/ 42- Aguilar D/	00:26	0-2	-2	0.0000	0	0	0	0	0.0000
20- Wald J/ 22- Whalen S/ 23- Doely Z/ 33- Tschetter J/ 42- Aguilar D/	00:18	0-0	0	0.0000	1	0	1	0	0.0000
12- Nelson S/ 20- Wald J/ 21- Jensen T/ 22- Whalen S/ 24- Coleman M/	00:11	0-0	0	0.0000	0	0	0	0	0.0000