



Officials:

Bethel (MN) - 70

Record: 6-4 (6-1)

NO.	Name	F	Min	FG			3P			FT			Rebounds			Fouls		TP	AS	TO	ST	Blocks		+/-
				M-A	M-A	M-A	OR	DR	TOT	PF	FD	BS	BA											
31	Lydia Hagstrom	F	21:23	3-4	1-1	0-0	0	6	6	5	1	7	2	1	1	1	1	1	1	1	1	4		
33	Emma Schultz	F	35:36	7-11	3-4	0-0	0	2	2	1	0	17	1	2	3	1	2	3	1	2	6			
3	Kendal Cox	G	37:07	3-7	0-2	7-10	0	1	1	3	7	13	3	2	1	1	1	1	3	3				
22	Courtney Nuest	G	33:57	6-11	2-4	6-8	3	4	7	3	5	20	2	3	2	0	0	12	0	0				
23	Anna Garfield	G	34:23	4-10	1-1	1-2	3	4	7	0	3	10	4	3	1	0	0	7	0	0				
2	Colette Duinick		26:16	1-7	0-4	1-1	0	4	4	1	2	3	1	1	1	0	1	0	0					
10	Olivia Williams		03:37	0-0	0-0	0-0	0	0	0	1	0	0	0	0	0	0	0	0	0					
32	Rosalie Penke		04:59	0-0	0-0	0-0	0	1	1	0	0	0	0	0	0	0	0	0	0					
4	Autumn Earney		02:42	0-1	0-1	0-0	0	0	0	1	0	0	0	0	0	0	0	0	0					
Team							0	0	0			0		0										
Totals				24-51	7-17	15-21	6	22	28	15	18	70	13	12	9	3	5	4						

Technical Fouls::NONE

Shooting By Period		
1st FG%	5-12	41.7%
3PT%	3-5	60.0%
FT%	1-2	50%
2nd FG%	8-15	53.3%
3PT%	0-2	0.0%
FT%	0-0	0%
3rd FG%	7-15	46.7%
3PT%	2-5	40.0%
FT%	3-3	100%
4th FG%	4-9	44.4%
3PT%	2-5	40.0%
FT%	11-16	68.8%
GM FG%	24-51	47.1%
3PT%	7-17	41.2%
FT%	15-21	71.4%

Dead Ball Rebounds: 4, 1

Gust. Adolphus - 66

Record: 8-2 (5-2)

NO.	Name	F	Min	FG			3P			FT			Rebounds			Fouls		TP	AS	TO	ST	Blocks		+/-
				M-A	M-A	M-A	OR	DR	TOT	PF	FD	BS	BA											
31	Grace Benz	F	27:15	6-9	0-0	1-2	3	6	9	4	3	13	0	3	0	2	0	1						
34	Rachel Kawiecki	F	20:16	1-8	0-1	1-1	2	3	5	1	3	3	1	3	3	1	2	4						
2	Emma Kniefel	G	15:48	1-2	0-0	1-2	0	1	1	2	1	3	1	2	0	0	-9							
12	Kylie Baranick	G	32:10	3-8	1-3	1-2	0	2	2	3	2	8	2	1	1	0	-13							
40	Anna Sanders	G	36:14	3-9	1-5	0-0	1	3	4	3	1	7	5	5	2	0	6							
10	Syd Hauger		23:34	2-4	0-1	2-2	0	3	3	2	2	6	1	0	1	0	-10							
30	Morgan Kelly		15:57	4-7	1-1	0-0	1	2	3	2	1	9	2	1	0	2	-8							
1	Riley Queensland		09:09	1-1	1-1	0-0	0	0	0	0	0	3	1	0	0	0	3							
11	Lexi Schermann		14:53	5-5	2-2	2-3	0	2	2	1	2	14	0	2	0	0	7							
32	Sienna Wiebusch		04:44	0-1	0-0	0-0	0	0	0	0	0	0	0	0	0	0	-1							
Team							0	0	0			0		0										
Totals				26-54	6-14	8-12	7	22	29	18	15	66	13	17	7	5	3	-4						

Technical Fouls::NONE

Shooting By Period		
1st FG%	8-12	66.7%
3PT%	2-4	50.0%
FT%	2-3	66.7%
2nd FG%	7-13	53.8%
3PT%	2-3	66.7%
FT%	1-2	50%
3rd FG%	5-13	38.5%
3PT%	2-4	50.0%
FT%	3-5	60%
4th FG%	6-16	37.5%
3PT%	0-3	0.0%
FT%	2-2	100%
GM FG%	26-54	48.1%
3PT%	6-14	42.9%
FT%	8-12	66.7%

Dead Ball Rebounds: 2, 1

	BET	GAC
Biggest lead	6 (4 th 0:04)	11 (3 rd 3:09)
Best Scoring Run	8 (3 rd 0:31)	10 (1 st 3:43)
Lead Changes	5	
Times Tied	5	
Time with Lead	01:51	33:07

Points from	BET	GAC
Turnovers	15	8
Paint	28	36
Second Chance	5	10
Fast Breaks	4	3
Bench	3	32

Period by Period Scoring					
	1st	2nd	3rd	4th	TOT
BET	14	16	19	21	70
GAC	20	17	15	14	66



Officials:

Period 1

Quarter Starters:

GAC	2 Kniefel E	12 Baranick K	31 Benz G	34 Kawiecki R	40 Sanders A
BET	3 Cox K	22 Nuest C	23 Garfield A	31 Hagstrom L	33 Schultz E

Game Time	GAC	Score	Diff	BET
10:00	31 BENZ G jumpball won			31 HAGSTROM L jumpball lost
09:46	34 KAWIECKI R 2pt FG in the paint, layup blocked			
09:46				31 HAGSTROM L block (1)
09:42	40 SANDERS A offensive rebound (1)			
09:41	31 BENZ G 2pt FG second chance outside the paint, jump shot made (2)	2-0	2	
09:41	2 KNIEFEL E assist (1)			
09:23		2-2	0	3 COX K 2pt FG in the paint, driving layup made (2)
08:57	40 SANDERS A turnover travel (1)			
08:33				23 GARFIELD A 2pt FG from turnover in the paint, layup missed
08:31	40 SANDERS A defensive rebound (2)			
08:19	40 SANDERS A 3pt FG , jump shot missed			
08:15				31 HAGSTROM L defensive rebound (1)
08:02				33 SCHULTZ E turnover 3 seconds (1)
07:45	jump ball situation			
07:45	40 SANDERS A turnover lost ball (2)			3 COX K steal (1)
07:28		2-5	-3	33 SCHULTZ E 3pt FG from turnover, jump shot made (3)
07:28				3 COX K assist (1)
07:05	2 KNIEFEL E turnover lost ball (1)			22 NUEST C steal (1)
06:56				31 HAGSTROM L 2pt FG from turnover in the paint, layup blocked
06:56	34 KAWIECKI R block (1)			
06:53	34 KAWIECKI R defensive rebound (1)			
06:49	12 BARANICK K 3pt FG , jump shot made (3)	5-5	0	
06:49	40 SANDERS A assist (1)			
06:20				23 GARFIELD A turnover travel (1)
06:20	2 KNIEFEL E substitution out			
06:20	31 BENZ G substitution out			
06:20	10 HAUGER S substitution in			
06:20	30 KELLY M substitution in			
06:20				22 NUEST C substitution out
06:20				23 GARFIELD A substitution out
06:20				2 DUININCK C substitution in
06:20				10 WILLIAMS O substitution in
06:13	12 BARANICK K foul drawn (1)			10 WILLIAMS O foul personal (1 - 1)
06:00	34 KAWIECKI R substitution out			
06:00	31 BENZ G substitution in			
06:00	31 BENZ G 2pt FG from turnover in the paint, layup missed			
06:00				31 HAGSTROM L defensive rebound (2)
05:40	10 HAUGER S steal (1)			31 HAGSTROM L turnover lost ball (1)
05:35	12 BARANICK K turnover bad pass (1)			31 HAGSTROM L steal (1)
05:25	30 KELLY M foul personal (1 - 1)			31 HAGSTROM L foul drawn (1)
05:25				10 WILLIAMS O substitution out
05:25				31 HAGSTROM L substitution out



Officials:

Game Time	GAC	Score	Diff	BET
05:25				23 GARFIELD A substitution in
05:25				32 PENKE R substitution in
05:17				33 SCHULTZ E 2pt FG from turnover in the paint, layup blocked
05:17	30 KELLY M block (1)			
05:14	30 KELLY M defensive rebound (1)			
05:10	jump ball situation			
05:08	10 HAUGER S 2pt FG in the paint, layup made (2)	7-5	2	
05:08	12 BARANICK K assist (1)			
04:43	12 BARANICK K substitution out			
04:43	31 BENZ G substitution out			
04:43	1 QUEENSLAND R substitution in			
04:43	11 SCHERMANN L substitution in			
04:43				32 PENKE R substitution out
04:43				33 SCHULTZ E substitution out
04:43				22 NUEST C substitution in
04:43				31 HAGSTROM L substitution in
04:31				2 DUININCK C 3pt FG , jump shot missed
04:30				23 GARFIELD A offensive rebound (1)
04:30				23 GARFIELD A turnover (2)
04:11	30 KELLY M 2pt FG from turnover in the paint, layup made (2)	9-5	4	
04:11	40 SANDERS A assist (2)			
04:02				2 DUININCK C 2pt FG in the paint, driving layup blocked
04:02	30 KELLY M block (2)			
03:57	30 KELLY M defensive rebound (2)			
03:43	11 SCHERMANN L 3pt FG , jump shot made (3)	12-5	7	
03:43	40 SANDERS A assist (3)			
03:39				Timeout 30 Sec
03:39				3 COX K substitution out
03:39				33 SCHULTZ E substitution in
03:25		12-8	4	22 NUEST C 3pt FG , jump shot made (3)
03:25				23 GARFIELD A assist (1)
03:03	11 SCHERMANN L foul drawn (1)			2 DUININCK C foul shooting (1 - 2)
03:03	1 QUEENSLAND R substitution out			
03:03	30 KELLY M substitution out			
03:03	2 KNIEFEL E substitution in			
03:03	34 KAWIECKI R substitution in			
03:03				2 DUININCK C substitution out
03:03				3 COX K substitution in
03:03	11 SCHERMANN L free throw 1 - 2 made (4)	13-8	5	
03:03	11 SCHERMANN L free throw 2 - 2 made (5)	14-8	6	
02:50				23 GARFIELD A 2pt FG in the paint, layup missed
02:47	34 KAWIECKI R defensive rebound (2)			
02:44	11 SCHERMANN L turnover bad pass (1)			
02:44	40 SANDERS A substitution out			
02:44	12 BARANICK K substitution in			
02:25		14-11	3	22 NUEST C 3pt FG from turnover, jump shot made (6)
02:25				31 HAGSTROM L assist (1)
02:08	10 HAUGER S 2pt FG in the paint, layup made (4)	16-11	5	
02:08	34 KAWIECKI R assist (1)			



Bethel (MN) at Gust. Adolphus

01/04/23 Gus Young Court, Saint Peter, Minn.
2022-23 Women's Basketball

Officials:

Game Time	GAC	Score	Diff	BET
01:58	10 HAUGER S substitution out			
01:58	31 BENZ G substitution in			
01:58				23 GARFIELD A substitution out
01:58				33 SCHULTZ E substitution out
01:58				2 DUININCK C substitution in
01:58				10 WILLIAMS O substitution in
01:50				2 DUININCK C 3pt FG , jump shot missed
01:48				offensive dead ball rebound (1)
01:43	31 BENZ G foul shooting (1 - 2)			3 COX K foul drawn (1)
01:43				3 COX K free throw 1 - 2 missed
01:43				offensive dead ball rebound (2)
01:43		16-12	4	3 COX K free throw 2 - 2 made (3)
01:43	11 SCHERMANN L substitution out			
01:43	40 SANDERS A substitution in			
01:33	34 KAWIECKI R turnover 3 seconds (1)			
01:33				10 WILLIAMS O substitution out
01:33				22 NUEST C substitution out
01:33				23 GARFIELD A substitution in
01:33				33 SCHULTZ E substitution in
01:07		16-14	2	23 GARFIELD A 2pt FG from turnover in the paint, driving layup made (2)
00:49	31 BENZ G 2pt FG in the paint, layup made (4)	18-14	4	
00:49	12 BARANICK K assist (2)			
00:49	31 BENZ G foul drawn (1)			31 HAGSTROM L foul shooting (1 - 3)
00:49				31 HAGSTROM L substitution out
00:49				32 PENKE R substitution in
00:49	31 BENZ G free throw 1 - 1 missed			
00:49				32 PENKE R defensive rebound (1)
00:47				2 DUININCK C turnover travel (1)
00:16	34 KAWIECKI R turnover bad pass (2)			33 SCHULTZ E steal (1)
00:12	34 KAWIECKI R steal (1)			33 SCHULTZ E turnover bad pass (2)
00:07	34 KAWIECKI R 3pt FG from turnover, jump shot missed			
00:07	31 BENZ G offensive rebound (1)			
00:07	31 BENZ G 2pt FG from turnover second chance in the paint, layup made (6)	20-14	6	
END OF PERIOD				
GAC 20-14 BET				



Officials:

Bethel (MN) - 14

NO.	Name	F	Min	FG			Rebounds			Fouls		TP	AS	TO	ST	Blocks		+/-
				M-A	3P	FT	OR	DR	TOT	PF	FD					BS	BA	
31	Lydia Hagstrom	F	08:28	0-1	0-0	0-0	0	2	2	1	1	0	1	1	1	1	1	-2
33	Emma Schultz	F	08:31	1-2	1-1	0-0	0	0	0	0	0	3	0	2	1	0	1	-2
3	Kendal Cox	G	09:24	1-1	0-0	1-2	0	0	0	0	1	3	1	0	1	0	0	-9
22	Courtney Nuest	G	06:50	2-2	2-2	0-0	0	0	0	0	0	6	0	0	1	0	0	-2
23	Anna Garfield	G	08:40	1-3	0-0	0-0	1	0	1	0	0	2	1	2	0	0	0	-7
2	Colette Duininck		05:15	0-3	0-2	0-0	0	0	0	1	0	0	0	1	0	0	1	-5
10	Olivia Williams		01:20	0-0	0-0	0-0	0	0	0	1	0	0	0	0	0	0	0	1
32	Rosalie Penke		01:32	0-0	0-0	0-0	0	1	1	0	0	0	0	0	0	0	0	-4
Team							0	0	0		0		0					
Totals				5-12	3-5	1-2	1	3	4	3	2	14	3	6	4	1	3	-6

Shooting By Period		
1st FG%	5-12	41.7%
3PT%	3-5	60.0%
FT%	1-2	50%
GM FG%	5-12	41.7%
3PT%	3-5	60.0%
FT%	1-2	50.0%

Dead Ball Rebounds: 2, 0

Technical Fouls::NONE

Gust. Adolphus - 20

NO.	Name	F	Min	FG			Rebounds			Fouls		TP	AS	TO	ST	Blocks		+/-
				M-A	3P	FT	OR	DR	TOT	PF	FD					BS	BA	
31	Grace Benz	F	06:55	3-4	0-0	0-1	1	0	1	1	1	6	0	0	0	0	0	3
34	Rachel Kawiecki	F	07:03	0-2	0-1	0-0	0	2	2	0	0	0	1	2	1	1	1	2
2	Emma Kniefel	G	06:43	0-0	0-0	0-0	0	0	0	0	0	0	1	1	0	0	0	2
12	Kylie Baranick	G	08:01	1-1	1-1	0-0	0	0	0	0	1	3	2	1	0	0	0	2
40	Anna Sanders	G	08:59	0-1	0-1	0-0	1	1	2	0	0	0	3	2	0	0	0	8
10	Syd Hauger		04:22	2-2	0-0	0-0	0	0	0	0	0	4	0	0	1	0	0	5
30	Morgan Kelly		03:17	1-1	0-0	0-0	0	2	2	1	0	2	0	0	0	2	0	4
1	Riley Queensland		01:40	0-0	0-0	0-0	0	0	0	0	0	0	0	0	0	0	0	2
11	Lexi Schermann		03:00	1-1	1-1	2-2	0	0	0	0	1	5	0	1	0	0	0	2
Team							0	0	0		0		0					
Totals				8-12	2-4	2-3	2	5	7	2	3	20	7	7	2	3	1	6

Shooting By Period		
1st FG%	8-12	66.7%
3PT%	2-4	50.0%
FT%	2-3	66.7%
GM FG%	8-12	66.7%
3PT%	2-4	50.0%
FT%	2-3	66.7%

Dead Ball Rebounds: 0, 0

Technical Fouls::NONE

	BET	GAC
Biggest lead	3 (1 st 7:28)	7 (1 st 3:43)
Best Scoring Run	5 (1 st 7:28)	10 (1 st 3:43)
Lead Changes	2	
Times Tied	2	
Time with Lead	00:39	05:26

Points from	BET	GAC
Turnovers	8	4
Paint	4	10
Second Chance	1	4
Fast Breaks	0	0
Bench	0	11

	Period by Period Scoring				
	1st	2nd	3rd	4th	TOT
BET	14	16	19	21	70
GAC	20	17	15	14	66



Officials:

Period 2

Quarter Starters:

GAC	2 Kniefel E	12 Baranick K	31 Benz G	34 Kawiecki R	40 Sanders A
BET	3 Cox K	22 Nuest C	23 Garfield A	31 Hagstrom L	33 Schultz E

Game Time	GAC	Score	Diff	BET
10:00				2 DUININCK C substitution out
10:00				32 PENKE R substitution out
10:00				22 NUEST C substitution in
10:00				31 HAGSTROM L substitution in
09:54	40 SANDERS A steal (1)			22 NUEST C turnover lost ball (1)
09:27	34 KAWIECKI R 2pt FG from turnover in the paint, layup blocked			
09:27				33 SCHULTZ E block (1)
09:23				31 HAGSTROM L defensive rebound (3)
09:12	12 BARANICK K foul personal (1 - 1)			22 NUEST C foul drawn (1)
09:12	34 KAWIECKI R substitution out			
09:12	30 KELLY M substitution in			
09:00		20-16	4	22 NUEST C 2pt FG in the paint, driving layup made (8)
09:00				33 SCHULTZ E assist (1)
08:44	2 KNIEFEL E 2pt FG in the paint, layup made (2)	22-16	6	
08:44	40 SANDERS A assist (4)			
08:29	jump ball situation			
08:29	12 BARANICK K steal (1)			22 NUEST C turnover lost ball (2)
08:29	2 KNIEFEL E substitution out			
08:29	10 HAUGER S substitution in			
08:14	12 BARANICK K 2pt FG from turnover in the paint, layup blocked			
08:14				3 COX K block (1)
08:10				22 NUEST C defensive rebound (1)
08:09		22-18	4	23 GARFIELD A 2pt FG in the paint, layup made (4)
08:09				22 NUEST C assist (1)
08:01	31 BENZ G turnover travel (1)			
08:01	31 BENZ G substitution out			
08:01	1 QUEENSLAND R substitution in			
08:01				23 GARFIELD A substitution out
08:01				2 DUININCK C substitution in
07:49		22-20	2	22 NUEST C 2pt FG from turnover in the paint, floating jump shot made (10)
07:27	1 QUEENSLAND R 3pt FG , jump shot made (3)	25-20	5	
07:27	30 KELLY M assist (1)			
07:04	10 HAUGER S foul personal (1 - 2)			3 COX K foul drawn (2)
07:04				33 SCHULTZ E substitution out
07:04				32 PENKE R substitution in
06:55				22 NUEST C 3pt FG , jump shot missed
06:53	10 HAUGER S defensive rebound (1)			
06:37	10 HAUGER S foul drawn (1)			22 NUEST C foul personal (1 - 1)
06:37				22 NUEST C substitution out
06:37				10 WILLIAMS O substitution in
06:24	12 BARANICK K 2pt FG in the paint, driving layup made (5)	27-20	7	
06:24	30 KELLY M assist (2)			



Officials:

Game Time	GAC	Score	Diff	BET
06:05		27-22	5	31 HAGSTROM L 2pt FG outside the paint, jump shot made (2)
06:05				3 COX K assist (2)
05:54	12 BARANICK K foul drawn (2)			31 HAGSTROM L foul shooting (2 - 2)
05:54				3 COX K substitution out
05:54				31 HAGSTROM L substitution out
05:54				23 GARFIELD A substitution in
05:54				33 SCHULTZ E substitution in
05:54	12 BARANICK K free throw 1 - 2 missed			
05:54	offensive dead ball rebound (1)			
05:54	12 BARANICK K free throw 2 - 2 made (6)	28-22	6	
05:54	12 BARANICK K substitution out			
05:54	11 SCHERMANN L substitution in			
05:54				10 WILLIAMS O substitution out
05:54				22 NUEST C substitution in
05:31				22 NUEST C 2pt FG in the paint, layup missed
05:29	11 SCHERMANN L defensive rebound (1)			
05:20	40 SANDERS A 2pt FG outside the paint, jump shot missed			
05:18				2 DUININCK C defensive rebound (1)
05:07		28-24	4	33 SCHULTZ E 2pt FG in the paint, layup made (5)
04:38	30 KELLY M 3pt FG , jump shot made (5)	31-24	7	
04:38	40 SANDERS A assist (5)			
04:09	jump ball situation			
04:09	1 QUEENSLAND R substitution out			
04:09	30 KELLY M substitution out			
04:09	31 BENZ G substitution in			
04:09	32 WIEBUSCH S substitution in			
04:09				32 PENKE R substitution out
04:09				3 COX K substitution in
04:03		31-26	5	33 SCHULTZ E 2pt FG in the paint, jump shot made (7)
03:37	40 SANDERS A 2pt FG in the paint, turnaround jump shot made (2)	33-26	7	
03:25				33 SCHULTZ E 3pt FG , jump shot missed
03:21	40 SANDERS A defensive rebound (3)			
03:13	40 SANDERS A 2pt FG in the paint, turnaround jump shot made (4)	35-26	9	
03:08	40 SANDERS A foul personal (1 - 3)			2 DUININCK C foul drawn (1)
03:08	40 SANDERS A substitution out			
03:08	12 BARANICK K substitution in			
02:53				23 GARFIELD A 2pt FG in the paint, layup missed
02:50	11 SCHERMANN L defensive rebound (2)			
02:27	10 HAUGER S 3pt FG , jump shot missed			
02:18				defensive dead ball rebound (3)
02:11	31 BENZ G substitution out			
02:11	34 KAWIECKI R substitution in			
02:04				3 COX K 2pt FG in the paint, layup missed
02:02	12 BARANICK K defensive rebound (1)			
01:46	12 BARANICK K 2pt FG in the paint, layup missed			
01:44				22 NUEST C defensive rebound (2)
01:34		35-28	7	3 COX K 2pt FG in the paint, floating jump shot made (5)
01:34	Timeout 30 Sec			



Bethel (MN) at Gust. Adolphus

01/04/23 Gus Young Court, Saint Peter, Minn.
2022-23 Women's Basketball

Game Time: 7:00 PM
Game Duration: 1:41
Attendance: 113

Officials:

Game Time	GAC	Score	Diff	BET
01:34	10 HAUGER S substitution out			
01:34	32 WIEBUSCH S substitution out			
01:34	2 KNIEFEL E substitution in			
01:34	40 SANDERS A substitution in			
01:34				2 DUININCK C substitution out
01:34				10 WILLIAMS O substitution in
01:20	11 SCHERMANN L 2pt FG outside the paint, step back jump shot made (7)	37-28	9	
01:06		37-30	7	3 COX K 2pt FG in the paint, layup made (7)
01:06				23 GARFIELD A assist (2)
00:41	34 KAWIECKI R foul drawn (1)			3 COX K foul personal (1 - 3)
00:32	40 SANDERS A 2pt FG in the paint, pull up jump shot missed			
00:28	34 KAWIECKI R offensive rebound (3)			
00:23	11 SCHERMANN L turnover out of bounds (2)			
00:23	11 SCHERMANN L substitution out			
00:23	10 HAUGER S substitution in			
00:00				22 NUEST C 2pt FG from turnover outside the paint, jump shot missed
00:00				23 GARFIELD A offensive rebound (2)
00:00				23 GARFIELD A 2pt FG from turnover second chance in the paint, layup missed
00:00	12 BARANICK K defensive rebound (2)			
END OF PERIOD				
GAC 37-30 BET				



Officials:

Bethel (MN) - 16

NO.	Name	Min	FG			Rebounds			Fouls		TP	AS	TO	ST	Blocks		+/-
			M-A	3P	FT	OR	DR	TOT	PF	FD					BS	BA	
31	Lydia Hagstrom	F 04:06	1-1	0-0	0-0	0	1	1	1	0	2	0	0	0	0	0	1
33	Emma Schultz	F 08:50	2-3	0-1	0-0	0	0	0	0	0	4	1	0	0	1	0	-1
3	Kendal Cox	G 08:15	2-3	0-0	0-0	0	0	0	1	1	4	1	0	0	1	0	1
22	Courtney Nuest	G 09:17	2-5	0-1	0-0	0	2	2	1	1	4	1	2	0	0	0	0
23	Anna Garfield	G 07:53	1-3	0-0	0-0	1	0	1	0	0	2	1	0	0	0	0	0
2	Colette Duininck	06:27	0-0	0-0	0-0	0	1	1	0	1	0	0	0	0	0	0	-3
32	Rosalie Penke	02:55	0-0	0-0	0-0	0	0	0	0	0	0	0	0	0	0	0	-2
10	Olivia Williams	02:17	0-0	0-0	0-0	0	0	0	0	0	0	0	0	0	0	0	-1
Team						0	0	0			0						
Totals			8-15	0-2	0-0	1	4	5	3	3	16	4	2	0	2	0	-1

Shooting By Period		
2 nd FG%	8-15	53.3%
3PT%	0-2	0.0%
FT%	0-0	0%
GM FG%	8-15	53.3%
3PT%	0-2	0.0%
FT%	0-0	0.0%

Dead Ball Rebounds: 0, 1

Technical Fouls::NONE

Gust. Adolphus - 17

NO.	Name	Min	FG			Rebounds			Fouls		TP	AS	TO	ST	Blocks		+/-
			M-A	3P	FT	OR	DR	TOT	PF	FD					BS	BA	
31	Grace Benz	F 03:57	0-0	0-0	0-0	0	0	0	0	0	0	0	1	0	0	0	0
34	Rachel Kawiecki	F 02:59	0-1	0-0	0-0	1	0	1	0	1	0	0	0	0	0	1	-2
2	Emma Kniefel	G 03:05	1-1	0-0	0-0	0	0	0	0	0	2	0	0	0	0	0	0
12	Kylie Baranick	G 07:14	1-3	0-0	1-2	0	2	2	1	1	3	0	0	1	0	1	-2
40	Anna Sanders	G 08:26	2-4	0-0	0-0	0	1	1	1	0	4	2	0	1	0	0	3
30	Morgan Kelly	05:03	1-1	1-1	0-0	0	0	0	0	0	3	2	0	0	0	0	1
10	Syd Hauger	07:18	0-1	0-1	0-0	0	1	1	1	1	0	0	0	0	0	0	1
1	Riley Queensland	03:52	1-1	1-1	0-0	0	0	0	0	0	3	0	0	0	0	0	3
11	Lexi Schermann	05:31	1-1	0-0	0-0	0	2	2	0	0	2	0	1	0	0	0	1
32	Sienna Wiebusch	02:35	0-0	0-0	0-0	0	0	0	0	0	0	0	0	0	0	0	0
Team						0	0	0			0						
Totals			7-13	2-3	1-2	1	6	7	3	3	17	4	2	2	0	2	1

Shooting By Period		
2 nd FG%	7-13	53.8%
3PT%	2-3	66.7%
FT%	1-2	50%
GM FG%	7-13	53.8%
3PT%	2-3	66.7%
FT%	1-2	50.0%

Dead Ball Rebounds: 1, 0

Technical Fouls::NONE

	BET	GAC
Biggest lead	0 (1 st 10:00)	9 (2 nd 3:13)
Best Scoring Run	4(2 nd 7:49)	5(2 nd 6:24)
Lead Changes	0	
Times Tied	0	
Time with Lead	00:00	09:27

Points from	BET	GAC
Turnovers	2	0
Paint	14	8
Second Chance	0	0
Fast Breaks	0	0
Bench	0	8

	Period by Period Scoring				
	1st	2nd	3rd	4th	TOT
BET	14	16	19	21	70
GAC	20	17	15	14	66



Officials:

Bethel (MN) - 30

NO.	Name	F	Min	FG			Rebounds			Fouls		TP	AS	TO	ST	Blocks		+/-
				M-A	M-A	M-A	OR	DR	TOT	PF	FD					BS	BA	
31	Lydia Hagstrom	F	12:34	1-2	0-0	0-0	0	3	3	2	1	2	1	1	1	1	1	-1
33	Emma Schultz	F	17:21	3-5	1-2	0-0	0	0	0	0	0	7	1	2	1	1	1	-3
3	Kendal Cox	G	17:39	3-4	0-0	1-2	0	0	0	1	2	7	2	0	1	1	0	-8
22	Courtney Nuest	G	16:07	4-7	2-3	0-0	0	2	2	1	1	10	1	2	1	0	0	-2
23	Anna Garfield	G	16:33	2-6	0-0	0-0	2	0	2	0	0	4	2	2	0	0	0	-7
2	Colette Duinick		11:42	0-3	0-2	0-0	0	1	1	1	1	0	0	1	0	0	1	-8
10	Olivia Williams		03:37	0-0	0-0	0-0	0	0	0	1	0	0	0	0	0	0	0	0
32	Rosalie Penke		04:27	0-0	0-0	0-0	0	1	1	0	0	0	0	0	0	0	0	-6
Team							0	0	0		0		0					
Totals				13-27	3-7	1-2	2	7	9	6	5	30	7	8	4	3	3	-7

Shooting By Period		
1 st FG%	5-12	41.7%
3PT%	3-5	60.0%
FT%	1-2	50%
2 nd FG%	8-15	53.3%
3PT%	0-2	0.0%
FT%	0-0	0%
GM FG%	13-27	48.1%
3PT%	3-7	42.9%
FT%	1-2	50.0%

Dead Ball Rebounds: 2, 1

Technical Fouls::NONE

Gust. Adolphus - 37

NO.	Name	F	Min	FG			Rebounds			Fouls		TP	AS	TO	ST	Blocks		+/-
				M-A	M-A	M-A	OR	DR	TOT	PF	FD					BS	BA	
31	Grace Benz	F	10:52	3-4	0-0	0-1	1	0	1	1	1	6	0	1	0	0	0	3
34	Rachel Kawiecki	F	10:02	0-3	0-1	0-0	1	2	3	0	1	0	1	2	1	1	2	0
2	Emma Kniefel	G	09:48	1-1	0-0	0-0	0	0	0	0	0	2	1	1	0	0	0	2
12	Kylie Baranick	G	15:15	2-4	1-1	1-2	0	2	2	1	2	6	2	1	1	0	1	0
40	Anna Sanders	G	17:25	2-5	0-1	0-0	1	2	3	1	0	4	5	2	1	0	0	11
10	Syd Hauger		11:40	2-3	0-1	0-0	0	1	1	1	1	4	0	0	1	0	0	6
30	Morgan Kelly		08:20	2-2	1-1	0-0	0	2	2	1	0	5	2	0	0	2	0	5
1	Riley Queensland		05:32	1-1	1-1	0-0	0	0	0	0	0	3	0	0	0	0	0	5
11	Lexi Schermann		08:31	2-2	1-1	2-2	0	2	2	0	1	7	0	2	0	0	0	3
32	Sienna Wiebusch		02:35	0-0	0-0	0-0	0	0	0	0	0	0	0	0	0	0	0	0
Team							0	0	0		0		0					
Totals				15-25	4-7	3-5	3	11	14	5	6	37	11	9	4	3	3	7

Shooting By Period		
1 st FG%	8-12	66.7%
3PT%	2-4	50.0%
FT%	2-3	66.7%
2 nd FG%	7-13	53.8%
3PT%	2-3	66.7%
FT%	1-2	50%
GM FG%	15-25	60.0%
3PT%	4-7	57.1%
FT%	3-5	60.0%

Dead Ball Rebounds: 1, 0

Technical Fouls::NONE

	BET	GAC
Biggest lead	3 (1 st 7:28)	9 (2 nd 3:13)
Best Scoring Run	5 (1 st 7:28)	10 (1 st 3:43)
Lead Changes	2	
Times Tied	2	
Time with Lead	00:39	15:26

Points from	BET	GAC
Turnovers	10	4
Paint	18	18
Second Chance	1	4
Fast Breaks	0	0
Bench	0	19

	Period by Period Scoring				
	1st	2nd	3rd	4th	TOT
BET	14	16	19	21	70
GAC	20	17	15	14	66



Officials:

Period 3

Quarter Starters:

GAC	2 Kniefel E	12 Baranick K	31 Benz G	34 Kawiecki R	40 Sanders A
BET	3 Cox K	22 Nuest C	23 Garfield A	31 Hagstrom L	33 Schultz E

Game Time	GAC	Score	Diff	BET
10:00	10 HAUGER S substitution out			
10:00	31 BENZ G substitution in			
10:00				10 WILLIAMS O substitution out
10:00				31 HAGSTROM L substitution in
09:37	34 KAWIECKI R turnover out of bounds (3)			
09:22				3 COX K turnover out of bounds (1)
09:07	2 KNIEFEL E foul drawn (1)			31 HAGSTROM L foul shooting (3 - 1)
08:57				31 HAGSTROM L substitution out
08:57				2 DUININCK C substitution in
08:57	2 KNIEFEL E free throw 1 - 2 made (3)	38-30	8	
08:57	2 KNIEFEL E free throw 2 - 2 missed			
08:57				23 GARFIELD A defensive rebound (3)
08:57		38-32	6	33 SCHULTZ E 2pt FG in the paint, layup made (9)
08:51	40 SANDERS A 3pt FG , jump shot made (7)	41-32	9	
08:32				23 GARFIELD A 2pt FG in the paint, layup missed
08:21	2 KNIEFEL E defensive rebound (1)			
08:17	jump ball situation			
08:17	2 KNIEFEL E turnover lost ball (2)			2 DUININCK C steal (1)
08:13	34 KAWIECKI R substitution out			
08:13	30 KELLY M substitution in			
07:57	40 SANDERS A steal (2)			23 GARFIELD A turnover lost ball (3)
07:43	31 BENZ G turnover lost ball (2)			23 GARFIELD A steal (1)
07:25				33 SCHULTZ E 2pt FG from turnover outside the paint, floating jump shot missed
07:13	40 SANDERS A defensive rebound (4)			
06:57	40 SANDERS A foul drawn (1)			3 COX K foul personal (2 - 2)
06:53	2 KNIEFEL E substitution out			
06:53	10 HAUGER S substitution in			
06:50	30 KELLY M foul drawn (1)			33 SCHULTZ E foul personal (1 - 3)
06:47	30 KELLY M 2pt FG outside the paint, jump shot missed			
06:41				23 GARFIELD A defensive rebound (4)
06:25				2 DUININCK C 3pt FG , jump shot missed
06:17	31 BENZ G defensive rebound (2)			
06:15	40 SANDERS A 3pt FG , jump shot missed			
06:09				2 DUININCK C defensive rebound (2)
06:04		41-35	6	33 SCHULTZ E 3pt FG , jump shot made (12)
06:04				23 GARFIELD A assist (3)
05:43	30 KELLY M 2pt FG in the paint, layup made (7)	43-35	8	
05:28	31 BENZ G foul personal (2 - 1)			3 COX K foul drawn (3)
05:19	12 BARANICK K substitution out			
05:19	30 KELLY M substitution out			
05:19	31 BENZ G substitution out			
05:19	1 QUEENSLAND R substitution in			



Officials:

Game Time	GAC	Score	Diff	BET
05:19	11 SCHERMANN L substitution in			
05:19	34 KAWIECKI R substitution in			
05:19				22 NUEST C substitution out
05:19				23 GARFIELD A substitution out
05:19				4 EARNEY A substitution in
05:19				31 HAGSTROM L substitution in
04:47				2 DUININCK C 2pt FG outside the paint, jump shot missed
04:47	defensive dead ball rebound (2)			
04:47		43-37	6	33 SCHULTZ E 2pt FG outside the paint, jump shot made (14)
04:47	11 SCHERMANN L 3pt FG , jump shot made (10)	46-37	9	
04:47	1 QUEENSLAND R assist (1)			
04:08	34 KAWIECKI R foul shooting (1 - 2)			3 COX K foul drawn (4)
03:55		46-38	8	3 COX K free throw 1 - 2 made (8)
03:54		46-39	7	3 COX K free throw 2 - 2 made (9)
03:51	1 QUEENSLAND R substitution out			
03:51	31 BENZ G substitution in			
03:42	10 HAUGER S 2pt FG in the paint, jump shot missed			
03:42	34 KAWIECKI R offensive rebound (4)			
03:42	40 SANDERS A 3pt FG second chance, jump shot missed			
03:42				2 DUININCK C defensive rebound (3)
03:42				4 EARNEY A 3pt FG , jump shot missed
03:42	31 BENZ G defensive rebound (3)			
03:38	34 KAWIECKI R 2pt FG in the paint, jump shot missed			
03:32				31 HAGSTROM L defensive rebound (4)
03:21				33 SCHULTZ E 2pt FG outside the paint, jump shot blocked
03:21	31 BENZ G block (1)			
03:09	10 HAUGER S defensive rebound (2)			
03:09	11 SCHERMANN L 2pt FG in the paint, layup made (12)	48-39	9	
03:09	10 HAUGER S assist (1)			
03:09	11 SCHERMANN L foul drawn (2)			4 EARNEY A foul shooting (1 - 4)
03:09	11 SCHERMANN L free throw 1 - 1 missed			
03:09	31 BENZ G offensive rebound (4)			
03:09	31 BENZ G 2pt FG second chance in the paint, layup made (8)	50-39	11	
03:09				4 EARNEY A substitution out
03:09				33 SCHULTZ E substitution out
03:09				22 NUEST C substitution in
03:09				23 GARFIELD A substitution in
02:53		50-41	9	22 NUEST C 2pt FG in the paint, layup made (12)
02:29	10 HAUGER S foul drawn (2)			31 HAGSTROM L foul shooting (4 - 5)
02:15	10 HAUGER S free throw 1 - 2 made (5)	51-41	10	
02:14	11 SCHERMANN L substitution out			
02:14	31 BENZ G substitution out			
02:14	34 KAWIECKI R substitution out			
02:14	2 KNIEFEL E substitution in			
02:14	12 BARANICK K substitution in			
02:14	30 KELLY M substitution in			
02:14	10 HAUGER S free throw 2 - 2 made (6)	52-41	11	
02:08		52-43	9	22 NUEST C 2pt FG in the paint, layup made (14)
01:59	30 KELLY M 2pt FG in the paint, jump shot missed			



Bethel (MN) at Gust. Adolphus

01/04/23 Gus Young Court, Saint Peter, Minn.
2022-23 Women's Basketball

Officials:

Game Time	GAC	Score	Diff	BET
01:53				2 DUININCK C defensive rebound (4)
01:47	2 KNIEFEL E foul personal (1 - 3)			23 GARFIELD A foul drawn (1)
01:33		52-46	6	33 SCHULTZ E 3pt FG , jump shot made (17)
01:33				22 NUEST C assist (2)
01:24				31 HAGSTROM L substitution out
01:24				33 SCHULTZ E substitution in
01:14	30 KELLY M 2pt FG in the paint, jump shot missed			
01:06				23 GARFIELD A defensive rebound (5)
01:01				3 COX K 3pt FG , jump shot missed
00:55	10 HAUGER S defensive rebound (3)			
00:51	2 KNIEFEL E 2pt FG in the paint, layup missed			
00:45				22 NUEST C defensive rebound (3)
00:34		52-48	4	2 DUININCK C 2pt FG outside the paint, jump shot made (2)
00:31	2 KNIEFEL E foul shooting (2 - 4)			2 DUININCK C foul drawn (2)
00:31	2 KNIEFEL E substitution out			
00:31	10 HAUGER S substitution out			
00:31	30 KELLY M substitution out			
00:31	1 QUEENSLAND R substitution in			
00:31	31 BENZ G substitution in			
00:31	32 WIEBUSCH S substitution in			
00:31		52-49	3	2 DUININCK C free throw 1 - 1 made (3)
00:31				2 DUININCK C substitution out
00:31				3 COX K substitution out
00:31				4 EARNEY A substitution in
00:31				32 PENKE R substitution in
00:13	40 SANDERS A turnover out of bounds (3)			
00:03				23 GARFIELD A 2pt FG from turnover in the paint, layup missed
00:00	31 BENZ G defensive rebound (5)			
END OF PERIOD				
GAC 52-49 BET				



Officials:

Bethel (MN) - 19

NO.	Name	F	Min	FG			Rebounds			Fouls		TP	AS	TO	ST	Blocks		+/-
				M-A	M-A	M-A	OR	DR	TOT	PF	FD					BS	BA	
31	Lydia Hagstrom	F	04:58	0-0	0-0	0-0	0	1	1	2	0	0	0	0	0	0	0	2
33	Emma Schultz	F	08:15	4-6	2-2	0-0	0	0	0	1	0	10	0	0	0	0	1	2
3	Kendal Cox	G	09:28	0-1	0-1	2-2	0	0	0	1	2	2	0	1	0	0	0	4
22	Courtney Nuest	G	07:50	2-2	0-0	0-0	0	1	1	0	0	4	1	0	0	0	0	7
23	Anna Garfield	G	07:50	0-2	0-0	0-0	0	3	3	0	1	0	1	1	1	0	0	7
10	Olivia Williams		00:00	0-0	0-0	0-0	0	0	0	0	0	0	0	0	0	0	0	0
2	Colette Duinick		08:25	1-3	0-1	1-1	0	3	3	0	1	3	0	0	1	0	0	4
4	Autumn Earney		02:42	0-1	0-1	0-0	0	0	0	1	0	0	0	0	0	0	0	-3
32	Rosalie Penke		00:32	0-0	0-0	0-0	0	0	0	0	0	0	0	0	0	0	0	0
Team							0	0	0		0		0					
Totals				7-15	2-5	3-3	0	8	8	5	4	19	2	2	2	0	1	4

Shooting By Period		
3rd FG%	7-15	46.7%
3PT%	2-5	40.0%
FT%	3-3	100%
GM FG%	7-15	46.7%
3PT%	2-5	40.0%
FT%	3-3	100.0%

Dead Ball Rebounds: 0, 0

Technical Fouls::NONE

Gust. Adolphus - 15

NO.	Name	F	Min	FG			Rebounds			Fouls		TP	AS	TO	ST	Blocks		+/-
				M-A	M-A	M-A	OR	DR	TOT	PF	FD					BS	BA	
31	Grace Benz	F	06:50	1-1	0-0	0-0	1	3	4	1	0	2	0	1	0	1	0	3
34	Rachel Kawiecki	F	04:52	0-1	0-0	0-0	1	0	1	1	0	0	0	1	0	0	0	4
2	Emma Kniefel	G	04:49	0-1	0-0	1-2	0	1	1	2	1	1	0	1	0	0	0	-4
12	Kylie Baranick	G	06:55	0-0	0-0	0-0	0	0	0	0	0	0	0	0	0	0	0	-6
40	Anna Sanders	G	10:00	1-3	1-3	0-0	0	1	1	0	1	3	0	1	1	0	0	-4
30	Morgan Kelly		04:36	1-4	0-0	0-0	0	0	0	0	1	2	0	0	0	0	0	-7
10	Syd Hauger		06:21	0-1	0-0	2-2	0	2	2	0	1	2	1	0	0	0	0	-5
1	Riley Queensland		02:00	0-0	0-0	0-0	0	0	0	0	0	0	1	0	0	0	0	-2
11	Lexi Schermann		03:05	2-2	1-1	0-1	0	0	0	0	1	5	0	0	0	0	0	2
32	Sienna Wiebusch		00:32	0-0	0-0	0-0	0	0	0	0	0	0	0	0	0	0	0	-1
Team							0	0	0		0		0					
Totals				5-13	2-4	3-5	2	7	9	4	5	15	2	4	1	1	0	-4

Shooting By Period		
3rd FG%	5-13	38.5%
3PT%	2-4	50.0%
FT%	3-5	60%
GM FG%	5-13	38.5%
3PT%	2-4	50.0%
FT%	3-5	60.0%

Dead Ball Rebounds: 0, 1

Technical Fouls::NONE

	BET	GAC
Biggest lead	0 (1 st 10:00)	11 (3 rd 3:09)
Best Scoring Run	8(3 rd 0:31)	4(3 rd 3:09)
Lead Changes	0	
Times Tied	0	
Time with Lead	00:00	08:57

Points from	BET	GAC
Turnovers	0	1
Paint	6	6
Second Chance	0	2
Fast Breaks	0	0
Bench	3	9

	Period by Period Scoring				
	1st	2nd	3rd	4th	TOT
BET	14	16	19	21	70
GAC	20	17	15	14	66



Officials:

Period 4

Quarter Starters:

GAC	1 Queensland R	12 Baranick K	31 Benz G	32 Wiebusch S	40 Sanders A
BET	2 Duinink C	3 Cox K	22 Nuest C	23 Garfield A	33 Schultz E

Game Time	GAC	Score	Diff	BET
10:00				4 EARNEY A substitution out
10:00				32 PENKE R substitution out
10:00				2 DUININCK C substitution in
10:00				3 COX K substitution in
09:41	12 BARANICK K 3pt FG , jump shot missed			
09:31	offensive dead ball rebound (3)			
09:26	jump ball situation			
09:26	31 BENZ G turnover lost ball (3)			33 SCHULTZ E steal (2)
09:08				2 DUININCK C 3pt FG from turnover, jump shot missed
09:04	31 BENZ G defensive rebound (6)			
08:48	32 WIEBUSCH S 2pt FG in the paint, layup missed			
08:44				33 SCHULTZ E defensive rebound (1)
08:40				22 NUEST C 3pt FG , jump shot missed
08:34				23 GARFIELD A offensive rebound (6)
08:23	1 QUEENSLAND R substitution out			
08:23	32 WIEBUSCH S substitution out			
08:23	11 SCHERMANN L substitution in			
08:23	34 KAWIECKI R substitution in			
08:04				22 NUEST C 2pt FG second chance in the paint, layup missed
07:58				22 NUEST C offensive rebound (4)
07:56				3 COX K 3pt FG second chance, jump shot missed
07:52	31 BENZ G defensive rebound (7)			
07:48	31 BENZ G foul drawn (2)			22 NUEST C foul personal (2 - 1)
07:45	34 KAWIECKI R 2pt FG in the paint, layup missed			
07:40	31 BENZ G offensive rebound (8)			
07:39	31 BENZ G 2pt FG second chance in the paint, layup made (10)	54-49	5	
07:28	31 BENZ G foul personal (3 - 1)			23 GARFIELD A foul drawn (2)
07:20				2 DUININCK C substitution out
07:20				31 HAGSTROM L substitution in
07:17	34 KAWIECKI R steal (2)			22 NUEST C turnover bad pass (3)
07:10	34 KAWIECKI R 2pt FG from turnover outside the paint, jump shot missed			
07:06				31 HAGSTROM L defensive rebound (5)
07:00	34 KAWIECKI R steal (3)			3 COX K turnover bad pass (2)
06:54	34 KAWIECKI R 2pt FG fast break from turnover in the paint, layup made (2)	56-49	7	
06:50	34 KAWIECKI R foul drawn (2)			22 NUEST C foul shooting (3 - 2)
06:50				Timeout 60 Sec
06:50	34 KAWIECKI R free throw fast break 1 - 1 made (3)	57-49	8	
06:29		57-52	5	31 HAGSTROM L 3pt FG , jump shot made (5)
06:29				23 GARFIELD A assist (4)
06:09	11 SCHERMANN L 2pt FG in the paint, layup made (14)	59-52	7	
05:40	11 SCHERMANN L foul shooting (1 - 2)			22 NUEST C foul drawn (2)
05:33	11 SCHERMANN L substitution out			



Officials:

Game Time	GAC	Score	Diff	BET
05:33	34 KAWIECKI R substitution out			
05:33	40 SANDERS A substitution out			
05:33	2 KNIEFEL E substitution in			
05:33	10 HAUGER S substitution in			
05:33	30 KELLY M substitution in			
05:33		59-53	6	22 NUEST C free throw 1 - 2 made (15)
05:33				22 NUEST C free throw 2 - 2 missed
05:33				22 NUEST C offensive rebound (5)
05:25		59-55	4	31 HAGSTROM L 2pt FG second chance in the paint, layup made (7)
05:25				3 COX K assist (3)
05:13	12 BARANICK K 2pt FG in the paint, layup missed			
05:13				31 HAGSTROM L defensive rebound (6)
05:08	jump ball situation			
04:55	31 BENZ G 2pt FG in the paint, jump shot missed			
04:51				33 SCHULTZ E defensive rebound (2)
04:35		59-58	1	23 GARFIELD A 3pt FG , jump shot made (7)
04:35				31 HAGSTROM L assist (2)
04:22	30 KELLY M turnover travel (1)			
04:22	Timeout 30 Sec			
04:22	2 KNIEFEL E substitution out			
04:22	30 KELLY M substitution out			
04:22	34 KAWIECKI R substitution in			
04:22	40 SANDERS A substitution in			
04:07	40 SANDERS A foul shooting (2 - 3)			3 COX K foul drawn (5)
03:51		59-59	0	3 COX K free throw 1 - 2 made (10)
03:51				3 COX K free throw 2 - 2 missed
03:51	34 KAWIECKI R defensive rebound (5)			
03:44	31 BENZ G 2pt FG in the paint, layup made (12)	61-59	2	
03:34	31 BENZ G foul drawn (3)			31 HAGSTROM L foul shooting (5 - 3)
03:29				31 HAGSTROM L substitution out
03:29				2 DUININCK C substitution in
03:29	31 BENZ G free throw 1 - 1 made (13)	62-59	3	
03:20		62-61	1	23 GARFIELD A 2pt FG in the paint, layup made (9)
03:20				2 DUININCK C assist (1)
02:57	34 KAWIECKI R foul drawn (3)			3 COX K foul personal (3 - 4)
02:52	40 SANDERS A turnover lost ball (4)			22 NUEST C steal (2)
02:40	40 SANDERS A foul shooting (3 - 4)			22 NUEST C foul drawn (3)
02:40		62-62	0	22 NUEST C free throw 1 - 2 made (16)
02:40		62-63	-1	22 NUEST C free throw 2 - 2 made (17)
02:40	34 KAWIECKI R substitution out			
02:40	30 KELLY M substitution in			
02:20	12 BARANICK K 2pt FG in the paint, layup made (8)	64-63	1	
01:52	30 KELLY M foul shooting (2 - 5)			3 COX K foul drawn (6)
01:52		64-64	0	3 COX K free throw 1 - 2 made (11)
01:52				3 COX K free throw 2 - 2 missed
01:50	31 BENZ G defensive rebound (9)			
01:25	31 BENZ G 2pt FG outside the paint, jump shot missed			
01:22				22 NUEST C defensive rebound (6)



Officials:

Game Time	GAC	Score	Diff	BET
01:17				Timeout 30 Sec
01:17	30 KELLY M substitution out			
01:17	34 KAWIECKI R substitution in			
00:53				3 COX K 2pt FG in the paint, jump shot blocked
00:53	31 BENZ G block (2)			
00:51				22 NUEST C offensive rebound (7)
00:51	12 BARANICK K foul personal (2 - 6)			22 NUEST C foul drawn (4)
00:51		64-65	-1	22 NUEST C free throw 1 - 2 made (18)
00:51		64-66	-2	22 NUEST C free throw 2 - 2 made (19)
00:33	34 KAWIECKI R 2pt FG outside the paint, jump shot missed			
00:28				23 GARFIELD A defensive rebound (7)
00:27	31 BENZ G foul personal (4 - 7)			23 GARFIELD A foul drawn (3)
00:27	31 BENZ G substitution out			
00:27	34 KAWIECKI R substitution out			
00:27	11 SCHERMANN L substitution in			
00:27	30 KELLY M substitution in			
00:27				23 GARFIELD A free throw fast break 1 - 2 missed
00:27				offensive dead ball rebound (4)
00:27		64-67	-3	23 GARFIELD A free throw fast break 2 - 2 made (10)
00:27	Timeout 60 Sec			
00:10	12 BARANICK K 3pt FG , jump shot missed			
00:05				3 COX K defensive rebound (1)
00:05				Timeout 30 Sec
00:05	30 KELLY M substitution out			
00:05	2 KNIEFEL E substitution in			
00:05	12 BARANICK K foul personal (3 - 8)			22 NUEST C foul drawn (5)
00:05				22 NUEST C free throw fast break 1 - 2 missed
00:05				offensive dead ball rebound (5)
00:05		64-68	-4	22 NUEST C free throw fast break 2 - 2 made (20)
00:05	Timeout 60 Sec			
00:05	2 KNIEFEL E substitution out			
00:05	30 KELLY M substitution in			
00:04	40 SANDERS A turnover lost ball (5)			33 SCHULTZ E steal (3)
00:04	10 HAUGER S foul personal (2 - 9)			3 COX K foul drawn (7)
00:04		64-69	-5	3 COX K free throw fast break 1 - 2 made (12)
00:04		64-70	-6	3 COX K free throw fast break 2 - 2 made (13)
00:04	Timeout 30 Sec			
00:02	40 SANDERS A 3pt FG , jump shot missed			
00:00	30 KELLY M offensive rebound (3)			
00:00	30 KELLY M 2pt FG second chance in the paint, layup made (9)	66-70	-4	
END OF GAME				
GAC 66-70 BET				



Officials:

Bethel (MN) - 21

NO.	Name	F	Min	FG			Rebounds			Fouls		TP	AS	TO	ST	Blocks		+/-
				M-A	M-A	M-A	OR	DR	TOT	PF	FD					BS	BA	
31	Lydia Hagstrom	F	03:51	2-2	1-1	0-0	0	2	2	1	0	5	1	0	0	0	0	3
33	Emma Schultz	F	10:00	0-0	0-0	0-0	0	2	2	0	0	0	0	0	2	0	0	7
3	Kendal Cox	G	10:00	0-2	0-1	4-6	0	1	1	1	3	4	1	1	0	0	1	7
22	Courtney Nuest	G	10:00	0-2	0-1	6-8	3	1	4	2	4	6	0	1	1	0	0	7
23	Anna Garfield	G	10:00	2-2	1-1	1-2	1	1	2	0	2	6	1	0	0	0	0	7
4	Autumn Earney		00:00	0-0	0-0	0-0	0	0	0	0	0	0	0	0	0	0	0	0
32	Rosalie Penke		00:00	0-0	0-0	0-0	0	0	0	0	0	0	0	0	0	0	0	0
2	Colette Duinink		06:09	0-1	0-1	0-0	0	0	0	0	0	0	1	0	0	0	0	4
Team							0	0	0		0		0					
Totals				4-9	2-5	11-16	4	7	11	4	9	21	4	2	3	0	1	7

Shooting By Period		
4 th FG%	4-9	44.4%
3PT%	2-5	40.0%
FT%	11-16	68.8%
GM FG%	4-9	44.4%
3PT%	2-5	40.0%
FT%	11-16	68.8%

Dead Ball Rebounds: 2, 0

Technical Fouls::NONE

Gust. Adolphus - 14

NO.	Name	F	Min	FG			Rebounds			Fouls		TP	AS	TO	ST	Blocks		+/-
				M-A	M-A	M-A	OR	DR	TOT	PF	FD					BS	BA	
31	Grace Benz	F	09:33	2-4	0-0	1-1	1	3	4	2	2	5	0	1	0	1	0	-5
34	Rachel Kawiecki	F	05:22	1-4	0-0	1-1	0	1	1	0	2	3	0	0	2	0	0	0
2	Emma Kniefel	G	01:11	0-0	0-0	0-0	0	0	0	0	0	0	0	0	0	0	0	-7
12	Kylie Baranick	G	10:00	1-4	0-2	0-0	0	0	0	2	0	2	0	0	0	0	0	-7
40	Anna Sanders	G	08:49	0-1	0-1	0-0	0	0	0	2	0	0	0	2	0	0	0	-1
1	Riley Queensland		01:37	0-0	0-0	0-0	0	0	0	0	0	0	0	0	0	0	0	0
32	Sienna Wiebusch		01:37	0-1	0-0	0-0	0	0	0	0	0	0	0	0	0	0	0	0
11	Lexi Schermann		03:17	1-1	0-0	0-0	0	0	0	1	0	2	0	0	0	0	0	2
10	Syd Hauger		05:33	0-0	0-0	0-0	0	0	0	1	0	0	0	0	0	0	0	-11
30	Morgan Kelly		03:01	1-1	0-0	0-0	1	0	1	1	0	2	0	1	0	0	0	-6
Team							0	0	0		0		0					
Totals				6-16	0-3	2-2	2	4	6	9	4	14	0	4	2	1	0	-7

Shooting By Period		
4 th FG%	6-16	37.5%
3PT%	0-3	0.0%
FT%	2-2	100%
GM FG%	6-16	37.5%
3PT%	0-3	0.0%
FT%	2-2	100.0%

Dead Ball Rebounds: 1, 0

Technical Fouls::NONE

	BET	GAC
Biggest lead	6 (4 th 0:04)	8 (4 th 6:50)
Best Scoring Run	7(4 th 3:51)	5(4 th 6:50)
Lead Changes	3	
Times Tied	3	
Time with Lead	01:12	07:22

Points from	BET	GAC
Turnovers	5	3
Paint	4	12
Second Chance	4	4
Fast Breaks	4	3
Bench	0	4

	Period by Period Scoring				
	1st	2nd	3rd	4th	TOT
BET	14	16	19	21	70
GAC	20	17	15	14	66



Officials:

Bethel (MN) - 40

NO.	Name	Min	FG			Rebounds			Fouls		TP	AS	TO	ST	Blocks		+/-
			M-A	M-A	M-A	OR	DR	TOT	PF	FD					BS	BA	
31	Lydia Hagstrom	F 08:49	2-2	1-1	0-0	0	3	3	3	0	5	1	0	0	0	0	5
33	Emma Schultz	F 18:15	4-6	2-2	0-0	0	2	2	1	0	10	0	0	2	0	1	9
3	Kendal Cox	G 19:28	0-3	0-2	6-8	0	1	1	2	5	6	1	2	0	0	1	11
22	Courtney Nuest	G 17:50	2-4	0-1	6-8	3	2	5	2	4	10	1	1	1	0	0	14
23	Anna Garfield	G 17:50	2-4	1-1	1-2	1	4	5	0	3	6	2	1	1	0	0	14
10	Olivia Williams	00:00	0-0	0-0	0-0	0	0	0	0	0	0	0	0	0	0	0	0
2	Colette Duinick	14:34	1-4	0-2	1-1	0	3	3	0	1	3	1	0	1	0	0	8
4	Autumn Earney	02:42	0-1	0-1	0-0	0	0	0	1	0	0	0	0	0	0	0	-3
32	Rosalie Penke	00:32	0-0	0-0	0-0	0	0	0	0	0	0	0	0	0	0	0	0
Team						0	0	0			0		0				
Totals			11-24	4-10	14-19	4	15	19	9	13	40	6	4	5	0	2	11

Shooting By Period		
3 rd FG%	7-15	46.7%
3PT%	2-5	40.0%
FT%	3-3	100%
4 th FG%	4-9	44.4%
3PT%	2-5	40.0%
FT%	11-16	68.8%
GM FG%	11-24	45.8%
3PT%	4-10	40.0%
FT%	14-19	73.7%

Dead Ball Rebounds: 2, 0

Technical Fouls::NONE

Gust. Adolphus - 29

NO.	Name	Min	FG			Rebounds			Fouls		TP	AS	TO	ST	Blocks		+/-
			M-A	M-A	M-A	OR	DR	TOT	PF	FD					BS	BA	
31	Grace Benz	F 16:23	3-5	0-0	1-1	2	6	8	3	2	7	0	2	0	2	0	-2
34	Rachel Kawiecki	F 10:14	1-5	0-0	1-1	1	1	2	1	2	3	0	1	2	0	0	4
2	Emma Kniefel	G 06:00	0-1	0-0	1-2	0	1	1	2	1	1	0	1	0	0	0	-11
12	Kylie Baranick	G 16:55	1-4	0-2	0-0	0	0	0	2	0	2	0	0	0	0	0	-13
40	Anna Sanders	G 18:49	1-4	1-4	0-0	0	1	1	2	1	3	0	3	1	0	0	-5
30	Morgan Kelly	07:37	2-5	0-0	0-0	1	0	1	1	1	4	0	1	0	0	0	-13
10	Syd Hauger	11:54	0-1	0-0	2-2	0	2	2	1	1	2	1	0	0	0	0	-16
1	Riley Queensland	03:37	0-0	0-0	0-0	0	0	0	0	0	0	1	0	0	0	0	-2
11	Lexi Schermann	06:22	3-3	1-1	0-1	0	0	0	1	1	7	0	0	0	0	0	4
32	Sienna Wiebusch	02:09	0-1	0-0	0-0	0	0	0	0	0	0	0	0	0	0	0	-1
Team						0	0	0			0		0				
Totals			11-29	2-7	5-7	4	11	15	13	9	29	2	8	3	2	0	-11

Shooting By Period		
3 rd FG%	5-13	38.5%
3PT%	2-4	50.0%
FT%	3-5	60%
4 th FG%	6-16	37.5%
3PT%	0-3	0.0%
FT%	2-2	100%
GM FG%	11-29	37.9%
3PT%	2-7	28.6%
FT%	5-7	71.4%

Dead Ball Rebounds: 1, 1

Technical Fouls::NONE

	BET	GAC
Biggest lead	6 (4 th 0:04)	11 (3 rd 3:09)
Best Scoring Run	8 (3 rd 0:31)	5 (4 th 6:50)
Lead Changes	3	
Times Tied	3	
Time with Lead	01:12	16:38

Points from	BET	GAC
Turnovers	5	4
Paint	10	18
Second Chance	4	6
Fast Breaks	4	3
Bench	3	13

	Period by Period Scoring				
	1st	2nd	3rd	4th	TOT
BET	14	16	19	21	70
GAC	20	17	15	14	66

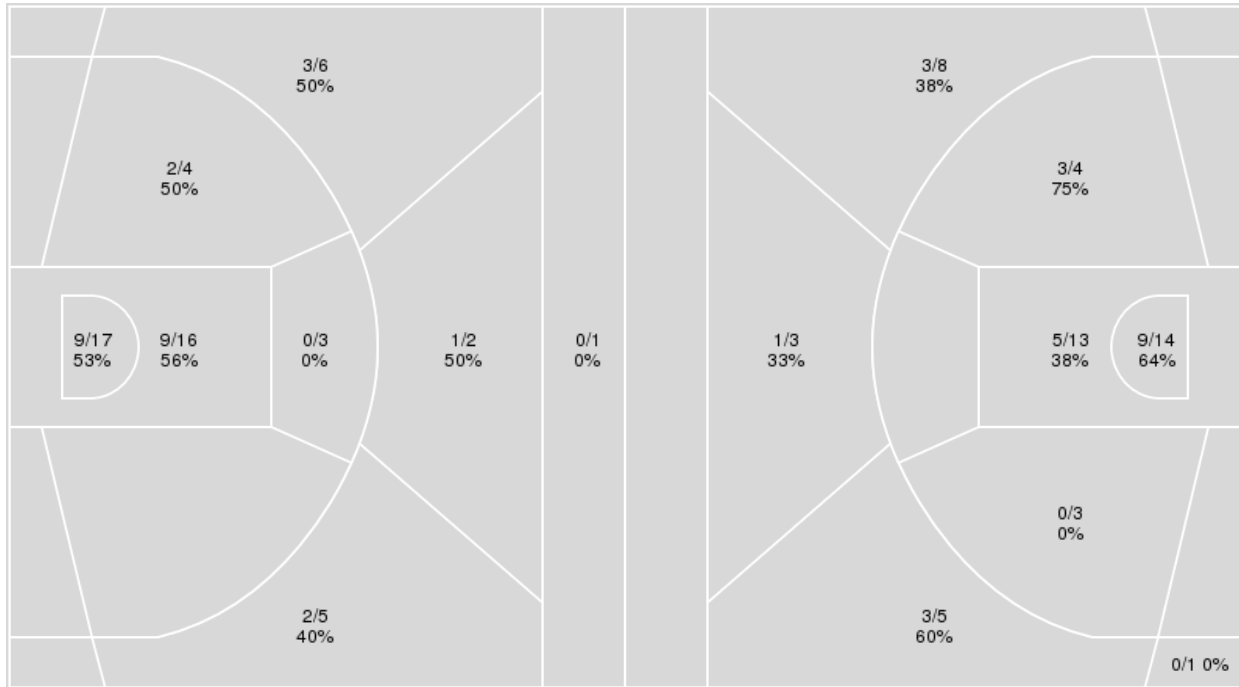


Officials:

{ Players => 1, 2, 3, 4, 5, 10, 11, 12, 22, 30, 31, 32, 34, 40; } FG Types { Players => All; } FG Types => All; Results => All;
 => All; Results => All;

Gust. Adolphus

Bethel (MN)



Gust. Adolphus	M/A	%
Field Goals	26/54	48
2 Points	20/40	50
3 Points	6/14	43
Free Throws	8/12	67

Bethel (MN)	M/A	%
Field Goals	24/51	47
2 Points	17/34	50
3 Points	7/17	41
Free Throws	15/21	71



Bethel (MN) at Gust. Adolphus

01/04/23 Gus Young Court, Saint Peter, Minn.
2022-23 Women's Basketball

Game Time: 7:00 PM
Game Duration: 1:41
Attendance: 113

Officials:

Bethel (MN)

No	Name	Mins		Score		Points Diff		Points per Min		Assists		Rebounds		Steals		Turnovers	
		On	Off	On	Off	On	Off	On	Off	On	Off	On	Off	On	Off	On	Off
2	Colette Duinick	26:16	13:44	46 - 46	24 - 20	0	4	1.75	1.75	5	8	20	8	7	2	5	7
3	Kendal Cox	37:07	02:53	65 - 62	5 - 4	3	1	1.75	1.73	12	1	27	1	9	0	12	0
4	Autumn Earney	02:42	37:18	4 - 7	66 - 59	-3	7	1.48	1.77	0	13	2	26	0	9	0	12
10	Olivia Williams	03:37	36:23	5 - 5	65 - 61	0	4	1.38	1.79	2	11	2	26	1	8	1	11
22	Courtney Nuest	33:57	06:03	62 - 50	8 - 16	12	-8	1.83	1.32	12	1	24	4	7	2	9	3
23	Anna Garfield	34:23	05:37	61 - 54	9 - 12	7	-3	1.77	1.60	12	1	25	3	8	1	11	1
31	Lydia Hagstrom	21:23	18:37	43 - 39	27 - 27	4	0	2.01	1.45	10	3	12	16	3	6	9	3
32	Rosalie Penke	04:59	35:01	4 - 10	66 - 56	-6	10	0.80	1.88	1	12	2	26	1	8	2	10
33	Emma Schultz	35:36	04:24	60 - 57	10 - 9	3	1	1.69	2.27	11	2	26	2	9	0	11	1

Gust. Adolphus

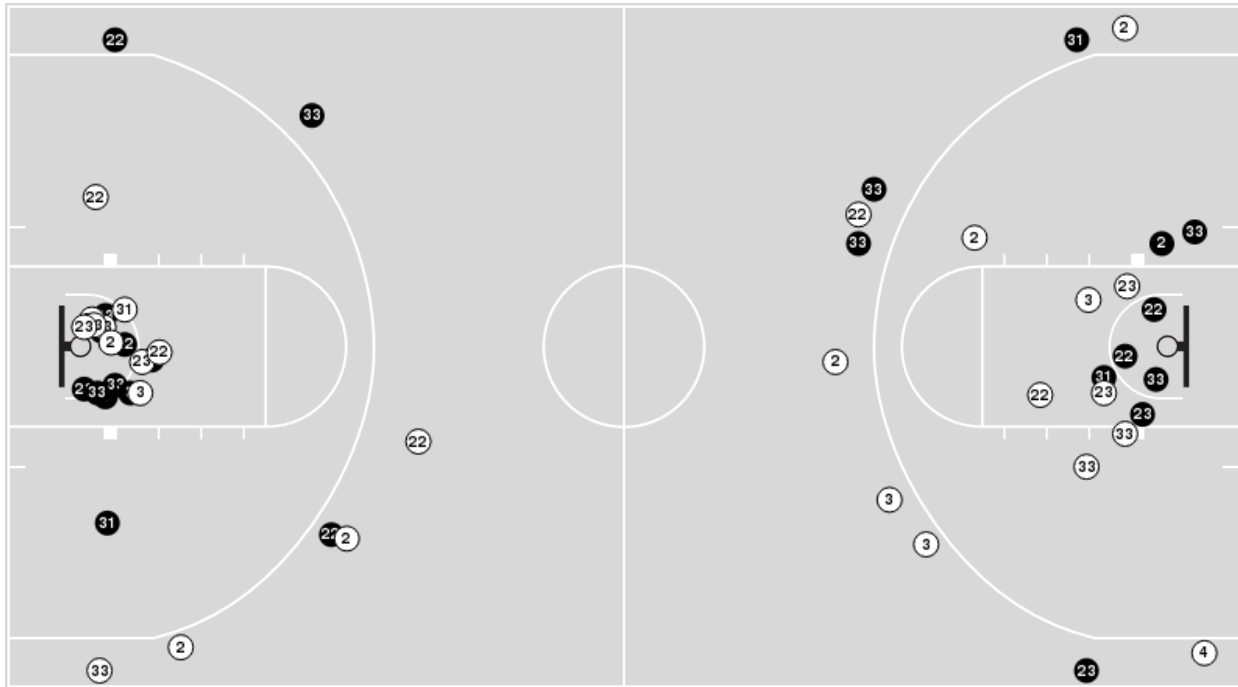
No	Name	Mins		Score		Points Diff		Points per Min		Assists		Rebounds		Steals		Turnovers	
		On	Off	On	Off	On	Off	On	Off	On	Off	On	Off	On	Off	On	Off
1	Riley Queensland	09:09	30:51	17 - 14	49 - 56	3	-7	1.86	1.59	6	7	5	24	0	7	2	15
2	Emma Kniefel	15:48	24:12	22 - 31	44 - 39	-9	5	1.39	1.82	5	8	10	19	4	3	11	6
10	Syd Hauger	23:34	16:26	42 - 52	24 - 18	-10	6	1.78	1.46	9	4	18	11	1	6	6	11
11	Lexi Schermann	14:53	25:07	35 - 28	31 - 42	7	-11	2.35	1.23	6	7	14	15	2	5	3	14
12	Kylie Baranick	32:10	07:50	44 - 57	22 - 13	-13	9	1.37	2.81	8	5	21	8	7	0	16	1
30	Morgan Kelly	15:57	24:03	25 - 33	41 - 37	-8	4	1.57	1.70	7	6	9	20	3	4	5	12
31	Grace Benz	27:15	12:45	40 - 39	26 - 31	1	-5	1.47	2.04	6	7	20	9	7	0	14	3
32	Sienna Wiebusch	04:44	35:16	4 - 5	62 - 65	-1	-3	0.85	1.76	0	13	5	24	0	7	2	15
34	Rachel Kawiecki	20:16	19:44	37 - 33	29 - 37	4	-8	1.83	1.47	6	7	16	13	4	3	10	7
40	Anna Sanders	36:14	03:46	64 - 58	2 - 12	6	-10	1.77	0.53	12	1	27	2	7	0	16	1



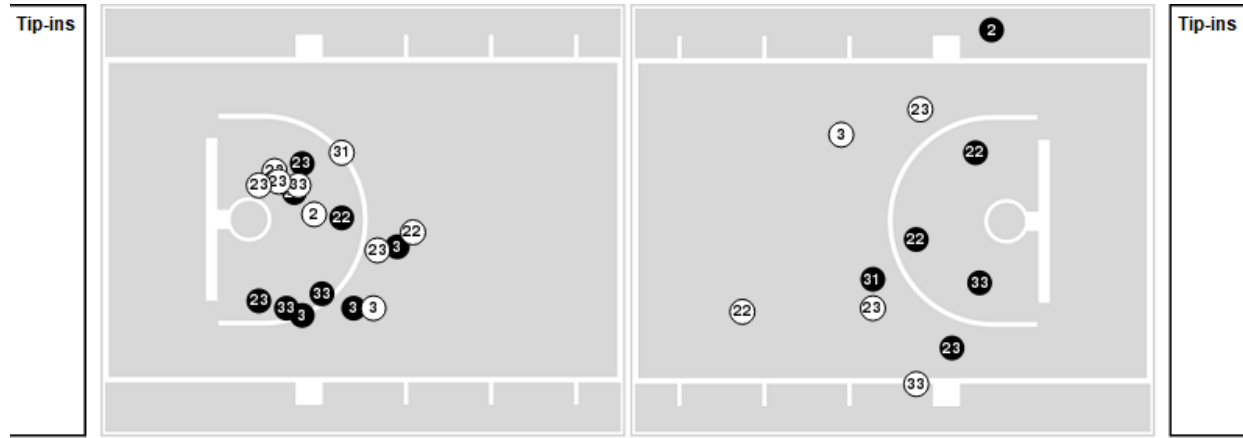
Officials:

Players => AllFG Types=>AllResults=>All
Bethel (MN)

All Field Goals



Blow Up Chart



● Made ○ Missed N - Player Number

Bethel (MN)	M/A	%
Field Goals	24/51	47
2 Points	17/34	50
3 Points	7/17	41
Free Throws	15/21	71

Bethel (MN)	M/A	%
Points in the Paint	28 (14 / 27)	52
Fast Break Points	4 (4/6)	67
Second Chance Points	5 (4/8)	50
Effective FG%	54	

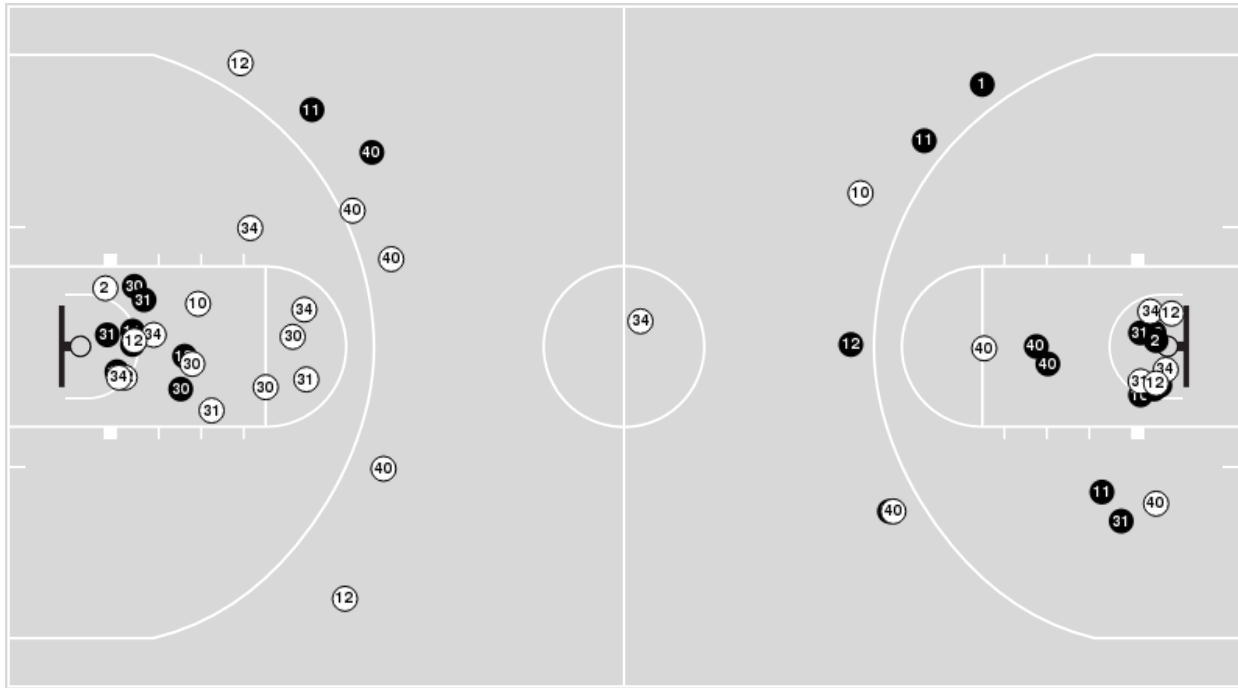


Officials:

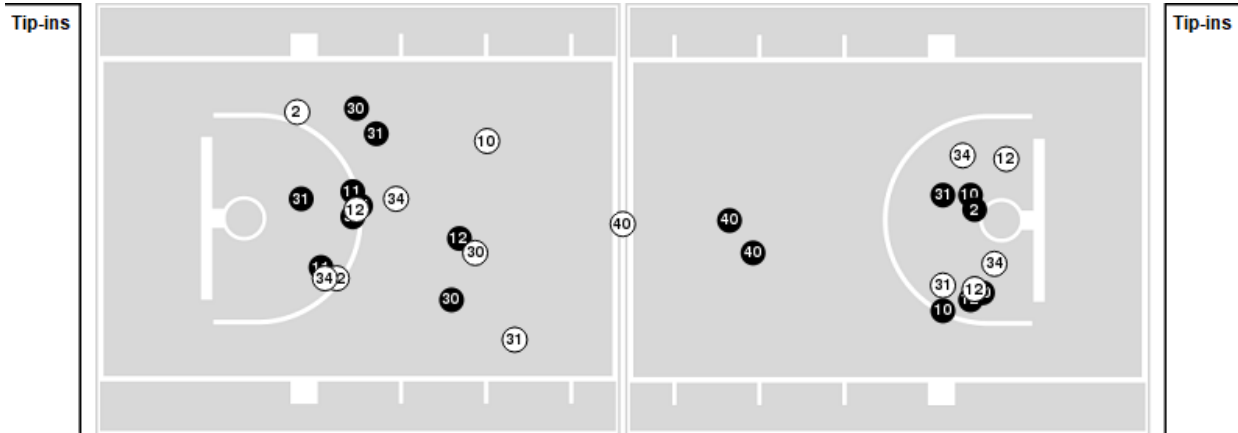
Players => 1, 2, 3, 4, 5, 10, 11, 12, 22, 30, 31, 32, 34, 40FG Types=>AllResults=>All

Gust. Adolphus

All Field Goals



Blow Up Chart



● Made ○ Missed N - Player Number

Gust. Adolphus	M/A	%
Field Goals	26/54	48
2 Points	20/40	50
3 Points	6/14	43
Free Throws	8/12	67

Gust. Adolphus	M/A	%
Points in the Paint	36 (18 / 33)	55
Fast Break Points	3 (2/2)	100
Second Chance Points	10 (5/6)	83
Effective FG%	54	



Bethel (MN) at Gust. Adolphus

01/04/23 Gus Young Court, Saint Peter, Minn.
2022-23 Women's Basketball

Game Time: 7:00 PM
Game Duration: 1:41
Attendance: 113

Officials:

Bethel (MN)

Lineup	Quarter On	Time On	Quarter Off	Time Off	Time on Court	Score	Score Diff	Reb	Stl	Tov	Ass	PPP
3- Cox K/ 22- Nuest C/ 23- Garfield A/ 31- Hagstrom L/ 33- Schultz E/	1	10:00	1	06:20	03:40	5-5	0	1	2	2	1	0.8333
2- Duininck C/ 3- Cox K/ 10- Williams O/ 31- Hagstrom L/ 33- Schultz E/	1	06:20	1	05:25	00:55	0-0	0	1	1	1	0	0.0000
2- Duininck C/ 3- Cox K/ 23- Garfield A/ 32- Penke R/ 33- Schultz E/	1	05:25	1	04:43	00:42	0-2	-2	0	0	0	0	0.0000
2- Duininck C/ 3- Cox K/ 22- Nuest C/ 23- Garfield A/ 31- Hagstrom L/	1	04:43	1	03:39	01:04	0-5	-5	1	0	1	0	0.0000
2- Duininck C/ 22- Nuest C/ 23- Garfield A/ 31- Hagstrom L/ 33- Schultz E/	1	03:39	1	03:03	00:36	3-0	3	0	0	0	1	3.0000
3- Cox K/ 22- Nuest C/ 23- Garfield A/ 31- Hagstrom L/ 33- Schultz E/	1	03:03	1	01:58	01:05	3-4	-1	0	0	0	1	1.5000
2- Duininck C/ 3- Cox K/ 10- Williams O/ 22- Nuest C/ 31- Hagstrom L/	1	01:58	1	01:33	00:25	1-0	1	0	0	0	0	0.5319
2- Duininck C/ 3- Cox K/ 23- Garfield A/ 31- Hagstrom L/ 33- Schultz E/	1	01:33	1	00:49	00:43	2-2	0	0	0	0	0	2.0000
2- Duininck C/ 3- Cox K/ 23- Garfield A/ 32- Penke R/ 33- Schultz E/	1	00:49	2	10:00	00:50	0-2	-2	1	1	2	0	0.0000
3- Cox K/ 22- Nuest C/ 23- Garfield A/ 31- Hagstrom L/ 33- Schultz E/	2	10:00	2	08:01	01:59	4-2	2	2	0	2	2	1.0000
2- Duininck C/ 3- Cox K/ 22- Nuest C/ 31- Hagstrom L/ 33- Schultz E/	2	08:01	2	07:04	00:57	2-3	-1	0	0	0	0	2.0000
2- Duininck C/ 3- Cox K/ 22- Nuest C/ 31- Hagstrom L/ 32- Penke R/	2	07:04	2	06:37	00:27	0-0	0	0	0	0	0	0.0000
2- Duininck C/ 3- Cox K/ 10- Williams O/ 31- Hagstrom L/ 32- Penke R/	2	06:37	2	05:54	00:43	2-2	0	0	0	0	1	2.0000
2- Duininck C/ 10- Williams O/ 23- Garfield A/ 32- Penke R/ 33- Schultz E/	2	05:54	2	05:54	00:00	0-1	-1	0	0	0	0	0.0000
2- Duininck C/ 22- Nuest C/ 23- Garfield A/ 32- Penke R/ 33- Schultz E/	2	05:54	2	04:09	01:45	2-3	-1	1	0	0	0	1.0000
2- Duininck C/ 3- Cox K/ 22- Nuest C/ 23- Garfield A/ 33- Schultz E/	2	04:09	2	01:34	02:35	4-4	0	1	0	0	0	0.8000
3- Cox K/ 10- Williams O/ 22- Nuest C/ 23- Garfield A/ 33- Schultz E/	2	01:34	3	10:00	01:34	2-2	0	1	0	0	1	1.0000
3- Cox K/ 22- Nuest C/ 23- Garfield A/ 31- Hagstrom L/ 33- Schultz E/	3	10:00	3	08:57	01:03	0-0	0	0	0	1	0	0.0000
2- Duininck C/ 3- Cox K/ 22- Nuest C/ 23- Garfield A/ 33- Schultz E/	3	08:57	3	05:19	03:38	5-6	-1	3	2	1	1	0.8333
2- Duininck C/ 3- Cox K/ 4- Earney A/ 31- Hagstrom L/ 33- Schultz E/	3	05:19	3	03:09	02:10	4-7	-3	2	0	0	0	0.8197
2- Duininck C/ 3- Cox K/ 22- Nuest C/ 23- Garfield A/ 31- Hagstrom L/	3	03:09	3	01:24	01:45	7-2	5	1	0	0	1	2.3333
2- Duininck C/ 3- Cox K/ 22- Nuest C/ 23- Garfield A/ 33- Schultz E/	3	01:24	3	00:31	00:52	3-0	3	2	0	0	0	1.2295
4- Earney A/ 22- Nuest C/ 23- Garfield A/ 32- Penke R/ 33- Schultz E/	3	00:31	4	10:00	00:32	0-0	0	0	0	0	0	0.0000
2- Duininck C/ 3- Cox K/ 22- Nuest C/ 23- Garfield A/ 33- Schultz E/	4	10:00	4	07:20	02:40	0-2	-2	3	1	0	0	0.0000
3- Cox K/ 22- Nuest C/ 23- Garfield A/ 31- Hagstrom L/ 33- Schultz E/	4	07:20	4	03:29	03:51	10-7	3	4	0	2	3	1.7361
2- Duininck C/ 3- Cox K/ 22- Nuest C/ 23- Garfield A/ 33- Schultz E/	4	03:29	4	00:00	03:29	11-5	6	4	2	0	1	1.7516



Bethel (MN) at Gust. Adolphus

01/04/23 Gus Young Court, Saint Peter, Minn.
2022-23 Women's Basketball

Game Time: 7:00 PM
Game Duration: 1:41
Attendance: 113

Officials:

Gust. Adolphus

Lineup	Quarter On	Time On	Quarter Off	Time Off	Time on Court	Score	Score Diff	Reb	Stl	Tov	Ass	PPP
2- Kniefel E/ 12- Baranick K/ 31- Benz G/ 34- Kawiecki R/ 40- Sanders A/	1	10:00	1	06:20	03:40	5-5	0	3	0	3	2	0.8333
10- Hauger S/ 12- Baranick K/ 30- Kelly M/ 34- Kawiecki R/ 40- Sanders A/	1	06:20	1	06:00	00:20	0-0	0	0	0	0	0	0.0000
10- Hauger S/ 12- Baranick K/ 30- Kelly M/ 31- Benz G/ 40- Sanders A/	1	06:00	1	04:43	01:17	2-0	2	1	1	1	1	0.6667
1- Queensland R/ 10- Hauger S/ 11- Schermann L/ 30- Kelly M/ 40- Sanders A/	1	04:43	1	03:03	01:40	5-3	2	1	0	0	2	2.5000
2- Kniefel E/ 10- Hauger S/ 11- Schermann L/ 34- Kawiecki R/ 40- Sanders A/	1	03:03	1	02:44	00:19	2-0	2	1	0	1	0	1.0638
2- Kniefel E/ 10- Hauger S/ 11- Schermann L/ 12- Baranick K/ 34- Kawiecki R/	1	02:44	1	01:58	00:46	2-3	-1	0	0	0	1	2.0000
2- Kniefel E/ 11- Schermann L/ 12- Baranick K/ 31- Benz G/ 34- Kawiecki R/	1	01:58	1	01:43	00:15	0-1	-1	0	0	0	0	0.0000
2- Kniefel E/ 12- Baranick K/ 31- Benz G/ 34- Kawiecki R/ 40- Sanders A/	1	01:43	2	09:12	02:31	4-2	2	1	2	2	1	0.7353
2- Kniefel E/ 12- Baranick K/ 30- Kelly M/ 31- Benz G/ 40- Sanders A/	2	09:12	2	08:29	00:43	2-2	0	0	1	0	1	2.0000
10- Hauger S/ 12- Baranick K/ 30- Kelly M/ 31- Benz G/ 40- Sanders A/	2	08:29	2	08:01	00:28	0-2	-2	0	0	1	0	0.0000
1- Queensland R/ 10- Hauger S/ 12- Baranick K/ 30- Kelly M/ 40- Sanders A/	2	08:01	2	05:54	02:07	6-4	2	1	0	0	2	2.0833
1- Queensland R/ 10- Hauger S/ 11- Schermann L/ 30- Kelly M/ 40- Sanders A/	2	05:54	2	04:09	01:45	3-2	1	1	0	0	1	1.5000
10- Hauger S/ 11- Schermann L/ 31- Benz G/ 32- Wiebusch S/ 40- Sanders A/	2	04:09	2	03:08	01:01	4-2	2	1	0	0	0	2.0000
10- Hauger S/ 11- Schermann L/ 12- Baranick K/ 31- Benz G/ 32- Wiebusch S/	2	03:08	2	02:11	00:57	0-0	0	1	0	0	0	0.0000
10- Hauger S/ 11- Schermann L/ 12- Baranick K/ 32- Wiebusch S/ 34- Kawiecki R/	2	02:11	2	01:34	00:37	0-2	-2	1	0	0	0	0.0000
2- Kniefel E/ 11- Schermann L/ 12- Baranick K/ 34- Kawiecki R/ 40- Sanders A/	2	01:34	2	00:23	01:11	2-2	0	1	0	1	0	1.0000
2- Kniefel E/ 10- Hauger S/ 12- Baranick K/ 34- Kawiecki R/ 40- Sanders A/	2	00:23	3	10:00	00:23	0-0	0	1	0	0	0	0.0000
2- Kniefel E/ 12- Baranick K/ 31- Benz G/ 34- Kawiecki R/ 40- Sanders A/	3	10:00	3	08:13	01:47	4-2	2	1	0	2	0	1.0309
2- Kniefel E/ 12- Baranick K/ 30- Kelly M/ 31- Benz G/ 40- Sanders A/	3	08:13	3	06:53	01:20	0-0	0	1	1	1	0	0.0000
10- Hauger S/ 12- Baranick K/ 30- Kelly M/ 31- Benz G/ 40- Sanders A/	3	06:53	3	05:19	01:34	2-3	-1	1	0	0	0	0.6667
1- Queensland R/ 10- Hauger S/ 11- Schermann L/ 34- Kawiecki R/ 40- Sanders A/	3	05:19	3	03:51	01:28	3-4	-1	0	0	0	1	3.0000
10- Hauger S/ 11- Schermann L/ 31- Benz G/ 34- Kawiecki R/ 40- Sanders A/	3	03:51	3	02:14	01:37	5-2	3	4	0	0	1	1.2887
2- Kniefel E/ 10- Hauger S/ 12- Baranick K/ 30- Kelly M/ 40- Sanders A/	3	02:14	3	00:31	01:42	1-7	-6	1	0	0	0	0.2907
1- Queensland R/ 12- Baranick K/ 31- Benz G/ 32- Wiebusch S/ 40- Sanders A/	3	00:31	4	08:23	02:09	0-1	-1	2	0	2	0	0.0000
11- Schermann L/ 12- Baranick K/ 31- Benz G/ 34- Kawiecki R/ 40- Sanders A/	4	08:23	4	05:33	02:50	7-3	4	2	2	0	0	1.5766
2- Kniefel E/ 10- Hauger S/ 12- Baranick K/ 30- Kelly M/ 31- Benz G/	4	05:33	4	04:22	01:11	0-6	-6	0	0	1	0	0.0000
10- Hauger S/ 12- Baranick K/ 31- Benz G/ 34- Kawiecki R/ 40- Sanders A/	4	04:22	4	02:40	01:42	3-5	-2	1	0	1	0	1.2295
10- Hauger S/ 12- Baranick K/ 30- Kelly M/ 31- Benz G/ 40- Sanders A/	4	02:40	4	01:17	01:23	2-1	1	1	0	0	0	1.0000
10- Hauger S/ 12- Baranick K/ 31- Benz G/ 34- Kawiecki R/ 40- Sanders A/	4	01:17	4	00:27	00:50	0-2	-2	0	0	0	0	0.0000
10- Hauger S/ 11- Schermann L/ 12- Baranick K/ 30- Kelly M/ 40- Sanders A/	4	00:27	4	00:05	00:22	0-1	-1	0	0	0	0	0.0000
2- Kniefel E/ 10- Hauger S/ 11- Schermann L/ 12- Baranick K/ 40- Sanders A/	4	00:05	4	00:05	00:00	0-1	-1	0	0	0	0	0.0000
10- Hauger S/ 11- Schermann L/ 12- Baranick K/ 30- Kelly M/ 40- Sanders A/	4	00:05	4	00:00	00:05	2-2	0	1	0	1	0	1.0000



Officials:

Bethel (MN)

Lineup	Time	Score	Score Diff	Pts/Min	Reb	Stl	Tov	Ass	PPP
2- Duininc C/ 3- Cox K/ 22- Nuest C/ 23- Garfield A/ 33- Schultz E/	13:14	23-17	6	1.7380	13	5	1	2	1.0589
3- Cox K/ 22- Nuest C/ 23- Garfield A/ 31- Hagstrom L/ 33- Schultz E/	11:38	22-18	4	1.8911	7	2	7	7	1.1727
2- Duininc C/ 3- Cox K/ 22- Nuest C/ 23- Garfield A/ 31- Hagstrom L/	02:49	7-7	0	2.4852	2	0	1	1	1.4000
2- Duininc C/ 3- Cox K/ 4- Earney A/ 31- Hagstrom L/ 33- Schultz E/	02:10	4-7	-3	1.8462	2	0	0	0	0.8197
2- Duininc C/ 22- Nuest C/ 23- Garfield A/ 32- Penke R/ 33- Schultz E/	01:45	2-3	-1	1.1429	1	0	0	0	1.0000
3- Cox K/ 10- Williams O/ 22- Nuest C/ 23- Garfield A/ 33- Schultz E/	01:34	2-2	0	1.2766	1	0	0	1	1.0000
2- Duininc C/ 3- Cox K/ 23- Garfield A/ 32- Penke R/ 33- Schultz E/	01:32	0-4	-4	0.0000	1	1	2	0	0.0000
2- Duininc C/ 3- Cox K/ 22- Nuest C/ 31- Hagstrom L/ 33- Schultz E/	00:57	2-3	-1	2.1053	0	0	0	0	2.0000
2- Duininc C/ 3- Cox K/ 10- Williams O/ 31- Hagstrom L/ 33- Schultz E/	00:55	0-0	0	0.0000	1	1	1	0	0.0000
2- Duininc C/ 3- Cox K/ 23- Garfield A/ 31- Hagstrom L/ 33- Schultz E/	00:43	2-2	0	2.7907	0	0	0	0	2.0000
2- Duininc C/ 3- Cox K/ 10- Williams O/ 31- Hagstrom L/ 32- Penke R/	00:43	2-2	0	2.7907	0	0	0	1	2.0000
2- Duininc C/ 22- Nuest C/ 23- Garfield A/ 31- Hagstrom L/ 33- Schultz E/	00:36	3-0	3	5.0000	0	0	0	1	3.0000
4- Earney A/ 22- Nuest C/ 23- Garfield A/ 32- Penke R/ 33- Schultz E/	00:32	0-0	0	0.0000	0	0	0	0	0.0000
2- Duininc C/ 3- Cox K/ 22- Nuest C/ 31- Hagstrom L/ 32- Penke R/	00:27	0-0	0	0.0000	0	0	0	0	0.0000
2- Duininc C/ 3- Cox K/ 10- Williams O/ 22- Nuest C/ 31- Hagstrom L/	00:25	1-0	1	2.4000	0	0	0	0	0.5319
2- Duininc C/ 10- Williams O/ 23- Garfield A/ 32- Penke R/ 33- Schultz E/	00:00	0-1	-1	NaN	0	0	0	0	0.0000



Officials:

Gust. Adolphus

Lineup	Time	Score	Score Diff	Pts/Min	Reb	Stl	Tov	Ass	PPP
2- Kniefel E/ 12- Baranick K/ 31- Benz G/ 34- Kawiecki R/ 40- Sanders A/	07:58	13-9	4	1.6318	5	2	7	3	0.8486
10- Hauger S/ 12- Baranick K/ 30- Kelly M/ 31- Benz G/ 40- Sanders A/	04:42	6-6	0	1.2766	3	1	2	1	0.6000
1- Queensland R/ 10- Hauger S/ 11- Schermann L/ 30- Kelly M/ 40- Sanders A/	03:25	8-5	3	2.3415	2	0	0	3	2.0000
11- Schermann L/ 12- Baranick K/ 31- Benz G/ 34- Kawiecki R/ 40- Sanders A/	02:50	7-3	4	2.4706	2	2	0	0	1.5766
10- Hauger S/ 12- Baranick K/ 31- Benz G/ 34- Kawiecki R/ 40- Sanders A/	02:32	3-7	-4	1.1842	1	0	1	0	0.8721
1- Queensland R/ 12- Baranick K/ 31- Benz G/ 32- Wiebusch S/ 40- Sanders A/	02:09	0-1	-1	0.0000	2	0	2	0	0.0000
1- Queensland R/ 10- Hauger S/ 12- Baranick K/ 30- Kelly M/ 40- Sanders A/	02:07	6-4	2	2.8346	1	0	0	2	2.0833
2- Kniefel E/ 12- Baranick K/ 30- Kelly M/ 31- Benz G/ 40- Sanders A/	02:03	2-2	0	0.9756	1	2	1	1	1.0000
2- Kniefel E/ 10- Hauger S/ 12- Baranick K/ 30- Kelly M/ 40- Sanders A/	01:42	1-7	-6	0.5882	1	0	0	0	0.2907
10- Hauger S/ 11- Schermann L/ 31- Benz G/ 34- Kawiecki R/ 40- Sanders A/	01:37	5-2	3	3.0928	4	0	0	1	1.2887
1- Queensland R/ 10- Hauger S/ 11- Schermann L/ 34- Kawiecki R/ 40- Sanders A/	01:28	3-4	-1	2.0455	0	0	0	1	3.0000
2- Kniefel E/ 11- Schermann L/ 12- Baranick K/ 34- Kawiecki R/ 40- Sanders A/	01:11	2-2	0	1.6901	1	0	1	0	1.0000
2- Kniefel E/ 10- Hauger S/ 12- Baranick K/ 30- Kelly M/ 31- Benz G/	01:11	0-6	-6	0.0000	0	0	1	0	0.0000
10- Hauger S/ 11- Schermann L/ 31- Benz G/ 32- Wiebusch S/ 40- Sanders A/	01:01	4-2	2	3.9344	1	0	0	0	2.0000
10- Hauger S/ 11- Schermann L/ 12- Baranick K/ 31- Benz G/ 32- Wiebusch S/	00:57	0-0	0	0.0000	1	0	0	0	0.0000
2- Kniefel E/ 10- Hauger S/ 11- Schermann L/ 12- Baranick K/ 34- Kawiecki R/	00:46	2-3	-1	2.6087	0	0	0	1	2.0000
10- Hauger S/ 11- Schermann L/ 12- Baranick K/ 32- Wiebusch S/ 34- Kawiecki R/	00:37	0-2	-2	0.0000	1	0	0	0	0.0000
10- Hauger S/ 11- Schermann L/ 12- Baranick K/ 30- Kelly M/ 40- Sanders A/	00:27	2-3	-1	4.4444	1	0	1	0	0.6667
2- Kniefel E/ 10- Hauger S/ 12- Baranick K/ 34- Kawiecki R/ 40- Sanders A/	00:23	0-0	0	0.0000	1	0	0	0	0.0000
10- Hauger S/ 12- Baranick K/ 30- Kelly M/ 34- Kawiecki R/ 40- Sanders A/	00:20	0-0	0	0.0000	0	0	0	0	0.0000
2- Kniefel E/ 10- Hauger S/ 11- Schermann L/ 34- Kawiecki R/ 40- Sanders A/	00:19	2-0	2	6.3158	1	0	1	0	1.0638
2- Kniefel E/ 11- Schermann L/ 12- Baranick K/ 31- Benz G/ 34- Kawiecki R/	00:15	0-1	-1	0.0000	0	0	0	0	0.0000
2- Kniefel E/ 10- Hauger S/ 11- Schermann L/ 12- Baranick K/ 40- Sanders A/	00:00	0-1	-1	NaN	0	0	0	0	0.0000