



Officials:

Bethel (MN) - 92

Record: 6-12 (4-9)

NO.	Name	Min	FG			3P			FT			Rebounds			Fouls		TP	AS	TO	ST	Blocks		+/-
			M-A	M-A	M-A	OR	DR	TOT	PF	FD	BS	BA											
2	Joey Kidder	F 38:32	7-13	2-3	10-13	4	5	9	4	10	26	6	5	0	1	1	-2						
24	Zach Doely	F 38:55	10-12	0-0	3-4	2	7	9	3	2	23	3	2	0	2	0	-1						
0	Payton Thomsen	G 35:10	5-10	2-6	1-3	0	6	6	0	3	13	0	3	2	0	1	1						
1	Josh Hoffman	G 19:55	2-7	0-3	4-6	0	3	3	2	3	8	3	1	1	0	1	11						
12	Sam Nelson	G 13:59	2-3	1-2	0-0	2	0	2	0	2	5	1	2	0	0	0	7						
4	Sam Zilmer	27:40	4-9	4-6	2-2	0	1	1	2	1	14	0	0	1	0	1	-6						
5	Caden Boettcher	11:26	0-1	0-0	0-0	0	2	2	0	1	0	0	0	0	0	0	-6						
21	Tommy Jensen	25:21	1-7	1-5	0-0	1	2	3	0	2	3	2	1	0	0	0	-11						
22	Solomon Whalen	14:02	0-1	0-1	0-0	0	0	0	4	0	0	1	2	0	0	0	-13						
Team						0	0	0			0			0									
Totals			31-63	10-26	20-28	9	26	35	15	24	92	16	16	4	4	4	-4						

Shooting By Period		
1 st FG%	13-30	43.3%
3PT%	4-14	28.6%
FT%	3-4	75%
2 nd FG%	14-26	53.8%
3PT%	6-10	60.0%
FT%	12-18	66.7%
OT FG%	4-7	57.1%
3PT%	0-2	0.0%
FT%	5-6	83.3%
GM FG%	31-63	49.2%
3PT%	10-26	38.5%
FT%	20-28	71.4%

Technical Fouls: Whalen 1st2:19 Whalen 2nd11:29

Dead Ball Rebounds: 6, 4

Gust. Adolphus - 96

Record: 8-10 (8-5)

NO.	Name	Min	FG			3P			FT			Rebounds			Fouls		TP	AS	TO	ST	Blocks		+/-
			M-A	M-A	M-A	OR	DR	TOT	PF	FD	BS	BA											
4	Evan Wieker	F 36:29	4-14	0-1	3-4	1	6	7	4	3	11	3	2	0	0	2	-2						
21	Spencer Swanson	F 38:29	15-21	2-2	6-10	6	2	8	4	5	38	3	1	2	1	0	-1						
22	Adam Biewen	F 28:29	2-9	0-1	1-2	3	2	5	4	1	5	1	1	1	0	1	-1						
32	Jake Guse	C 17:30	0-2	0-0	0-2	2	3	5	1	2	0	2	0	2	1	0	-6						
3	Jordan Schommer	G 37:50	11-19	4-9	0-1	0	6	6	4	1	26	1	2	2	0	0	1						
1	Brady Kienitz	07:40	1-3	0-2	0-0	0	2	2	0	0	2	0	0	0	0	0	4						
2	Cam Anderson	03:07	0-0	0-0	0-0	1	0	1	0	0	0	0	0	0	0	0	4						
15	Wyatt Olson	27:30	6-10	0-0	2-3	1	3	4	3	2	14	0	1	0	0	1	10						
11	Carson Koch	27:56	0-0	0-0	0-0	1	0	1	4	0	0	0	0	0	0	0	11						
Team						0	0	0			0			0									
Totals			39-78	6-15	12-22	15	24	39	24	14	96	10	7	7	4	4	4						

Shooting By Period		
1 st FG%	17-40	42.5%
3PT%	4-9	44.4%
FT%	1-5	20%
2 nd FG%	17-32	53.1%
3PT%	2-6	33.3%
FT%	4-9	44.4%
OT FG%	5-6	83.3%
3PT%	0-0	0.0%
FT%	7-8	87.5%
GM FG%	39-78	50.0%
3PT%	6-15	40.0%
FT%	12-22	54.5%

Technical Fouls: NONE

Dead Ball Rebounds: 4, 1

	BUM	GAC
Biggest lead	6 (1 st 16:28)	10 (1 st 2:30)
Best Scoring Run	8 (2 nd 19:22)	10 (1 st 2:30)
Lead Changes	11	
Times Tied	8	
Time with Lead	24:53	15:28

Points from	BUM	GAC
Turnovers	10	26
Paint	40	66
Second Chance	15	22
Fast Breaks	5	12
Bench	17	16

	Period by Period Scoring			
	1st	2nd	OT1	TOT
BUM	33	46	13	92
GAC	39	40	17	96



Officials:

Period 1

Quarter Starters:

GAC	3 Schommer J	4 Wieker E	21 Swanson S	22 Biewen A	32 Guse J
BUM	0 Thomsen P	1 Hoffman J	2 Kidder J	12 Nelson S	24 Doely Z

Game Time	GAC	Score	Diff	BUM
20:00	32 GUSE J jumpball won			24 DOELY Z jumpball lost
19:44	21 SWANSON S 2pt FG outside the paint, turnaround jump shot missed			
19:40				0 THOMSEN P defensive rebound (1)
19:29		0-2	-2	24 DOELY Z 2pt FG in the paint, dunk, made (2)
19:29				2 KIDDER J assist (1)
19:11	4 WIEKER E 2pt FG in the paint, layup missed			
19:08				24 DOELY Z defensive rebound (1)
19:04				1 HOFFMAN J 2pt FG in the paint, layup missed
19:00	21 SWANSON S defensive rebound (1)			
18:55	22 BIEWEN A 2pt FG outside the paint, jump shot missed			
18:52				0 THOMSEN P defensive rebound (2)
18:43	3 SCHOMMER J steal (1)			12 NELSON S turnover bad pass (1)
18:34	21 SWANSON S 3pt FG from turnover, jump shot made (3)	3-2	1	
18:34	22 BIEWEN A assist (1)			
18:08		3-4	-1	1 HOFFMAN J 2pt FG in the paint, driving layup made (2)
18:01	22 BIEWEN A 2pt FG in the paint, layup blocked			
18:01				2 KIDDER J block (1)
17:57				2 KIDDER J defensive rebound (1)
17:39		3-7	-4	2 KIDDER J 3pt FG , jump shot made (3)
17:39				1 HOFFMAN J assist (1)
17:21	3 SCHOMMER J 3pt FG , jump shot made (3)	6-7	-1	
17:21	4 WIEKER E assist (1)			
17:01		6-9	-3	12 NELSON S 2pt FG in the paint, driving layup made (2)
16:50	3 SCHOMMER J turnover lost ball (1)			0 THOMSEN P steal (1)
16:36				0 THOMSEN P 3pt FG from turnover, jump shot missed
16:33				12 NELSON S offensive rebound (1)
16:31				0 THOMSEN P 3pt FG from turnover second chance, jump shot missed
16:29				2 KIDDER J offensive rebound (2)
16:28		6-12	-6	0 THOMSEN P 3pt FG from turnover second chance, jump shot made (3)
16:28				1 HOFFMAN J assist (2)
16:25	Timeout 30 Sec			
16:09	32 GUSE J 2pt FG in the paint, hook shot missed			
16:06				0 THOMSEN P defensive rebound (3)
15:48	3 SCHOMMER J steal (2)			12 NELSON S turnover bad pass (2)
15:41	4 WIEKER E 2pt FG fast break from turnover in the paint, driving layup made (2)	8-12	-4	
15:41	3 SCHOMMER J assist (1)			
15:26		8-14	-6	0 THOMSEN P 2pt FG in the paint, driving layup made (5)
15:04	22 BIEWEN A 2pt FG in the paint, layup made (2)	10-14	-4	
15:04	4 WIEKER E assist (2)			
14:31		10-16	-6	0 THOMSEN P 2pt FG in the paint, driving layup made (7)



Official Basketball Play by Play - First Half
Bethel (MN) at Gust. Adolphus
 01/25/23 Gus Young Court, Saint Peter, MN
 2022-23 Men's Basketball

Game Time: 7:00 PM
Game Duration: 1:55
Attendance: 237

Officials:

Game Time	GAC	Score	Diff	BUM
14:17	21 SWANSON S 2pt FG in the paint, layup missed			
14:14				24 DOELY Z defensive rebound (2)
13:57	3 SCHOMMER J foul personal (1 - 1)			12 NELSON S foul drawn (1)
13:57	3 SCHOMMER J substitution out			
13:57	4 WIEKER E substitution out			
13:57	32 GUSE J substitution out			
13:57	1 KIENITZ B substitution in			
13:57	2 ANDERSON C substitution in			
13:57	15 OLSON W substitution in			
13:57				1 HOFFMAN J substitution out
13:57				12 NELSON S substitution out
13:57				24 DOELY Z substitution out
13:57				4 ZILMER S substitution in
13:57				5 BOETTCHER C substitution in
13:57				21 JENSEN T substitution in
13:36				21 JENSEN T 3pt FG , jump shot missed
13:34	1 KIENITZ B defensive rebound (1)			
13:22	1 KIENITZ B 2pt FG in the paint, jump shot made (2)	12-16	-4	
13:22	21 SWANSON S assist (1)			
13:13	15 OLSON W foul personal (1 - 2)			5 BOETTCHER C foul drawn (1)
13:00				2 KIDDER J turnover travel (1)
12:49	22 BIEWEN A 2pt FG from turnover in the paint, layup missed			
12:47	2 ANDERSON C offensive rebound (1)			
12:31	1 KIENITZ B 3pt FG from turnover second chance, jump shot missed			
12:29	21 SWANSON S offensive rebound (2)			
12:23	21 SWANSON S 2pt FG from turnover second chance outside the paint, floating jump shot missed			
12:19				21 JENSEN T defensive rebound (1)
12:17				0 THOMSEN P 3pt FG , jump shot missed
12:13	15 OLSON W defensive rebound (1)			
11:59	22 BIEWEN A 2pt FG in the paint, floating jump shot missed			
11:57	22 BIEWEN A offensive rebound (1)			
11:52	21 SWANSON S 2pt FG second chance in the paint, layup made (5)	14-16	-2	
11:42	21 SWANSON S foul shooting (1 - 3)			2 KIDDER J foul drawn (1)
11:42		14-17	-3	2 KIDDER J free throw 1 - 2 made (4)
11:42	2 ANDERSON C substitution out			
11:42	22 BIEWEN A substitution out			
11:42	3 SCHOMMER J substitution in			
11:42	4 WIEKER E substitution in			
11:42				0 THOMSEN P substitution out
11:42				22 WHALEN S substitution in
11:42				2 KIDDER J free throw 2 - 2 missed
11:41	1 KIENITZ B defensive rebound (2)			
11:21	15 OLSON W 2pt FG in the paint, layup missed			
11:19				2 KIDDER J defensive rebound (3)
11:02				4 ZILMER S 2pt FG in the paint, layup blocked
11:02	21 SWANSON S block (1)			
10:59	21 SWANSON S defensive rebound (3)			



Officials:

Game Time	GAC	Score	Diff	BUM
10:54	15 OLSON W 2pt FG in the paint, layup missed			
10:51	21 SWANSON S offensive rebound (4)			
10:48	3 SCHOMMER J 3pt FG second chance, jump shot made (6)	17-17	0	
10:35				4 ZILMER S 3pt FG , jump shot missed
10:32	3 SCHOMMER J defensive rebound (1)			
10:20	1 KIENITZ B 3pt FG , jump shot missed			
10:17				5 BOETTCHER C defensive rebound (1)
09:52		17-20	-3	21 JENSEN T 3pt FG , jump shot made (3)
09:52				22 WHALEN S assist (1)
09:50				Timeout 60 Sec
09:50	1 KIENITZ B substitution out			
09:50	15 OLSON W substitution out			
09:50	21 SWANSON S substitution out			
09:50	11 KOCH C substitution in			
09:50	22 BIEWEN A substitution in			
09:50	32 GUSE J substitution in			
09:50				2 KIDDER J substitution out
09:50				5 BOETTCHER C substitution out
09:50				12 NELSON S substitution in
09:50				24 DOELY Z substitution in
09:37	3 SCHOMMER J 2pt FG in the paint, floating jump shot made (8)	19-20	-1	
09:18		19-23	-4	4 ZILMER S 3pt FG , jump shot made (3)
09:18				24 DOELY Z assist (1)
09:03	3 SCHOMMER J 2pt FG in the paint, turnaround jump shot made (10)	21-23	-2	
08:47				21 JENSEN T 3pt FG , jump shot missed
08:42				24 DOELY Z offensive rebound (3)
08:42				24 DOELY Z 2pt FG second chance in the paint, layup missed
08:39	32 GUSE J defensive rebound (1)			
08:28	3 SCHOMMER J 2pt FG in the paint, turnaround jump shot made (12)	23-23	0	
08:19		23-25	-2	24 DOELY Z 2pt FG in the paint, dunk, made (4)
08:19				21 JENSEN T assist (1)
08:09	4 WIEKER E foul drawn (1)			22 WHALEN S foul personal (1 - 1)
08:08	3 SCHOMMER J 2pt FG in the paint, layup made (14)	25-25	0	
07:47				21 JENSEN T 2pt FG in the paint, pull up jump shot missed
07:44	32 GUSE J defensive rebound (2)			
07:37	4 WIEKER E 3pt FG , jump shot missed			
07:35	11 KOCH C offensive rebound (1)			
07:29	3 SCHOMMER J 2pt FG second chance in the paint, jump shot missed			
07:27	4 WIEKER E offensive rebound (1)			
07:25	4 WIEKER E 2pt FG second chance in the paint, layup blocked			
07:25				24 DOELY Z block (1)
07:25	offensive dead ball rebound (1)			
07:25	4 WIEKER E substitution out			
07:25	32 GUSE J substitution out			
07:25	15 OLSON W substitution in			
07:25	21 SWANSON S substitution in			
07:25				4 ZILMER S substitution out



Official Basketball Play by Play - First Half
Bethel (MN) at Gust. Adolphus
 01/25/23 Gus Young Court, Saint Peter, MN
 2022-23 Men's Basketball

Game Time: 7:00 PM
Game Duration: 1:55
Attendance: 237

Officials:

Game Time	GAC	Score	Diff	BUM
07:25				21 JENSEN T substitution out
07:25				22 WHALEN S substitution out
07:25				0 THOMSEN P substitution in
07:25				1 HOFFMAN J substitution in
07:25				2 KIDDER J substitution in
07:07	3 SCHOMMER J 3pt FG second chance, jump shot missed			
07:02				1 HOFFMAN J defensive rebound (1)
06:50				1 HOFFMAN J turnover out of bounds (1)
06:40	3 SCHOMMER J 2pt FG from turnover in the paint, driving layup made (16)	27-25	2	
06:13				12 NELSON S 3pt FG , jump shot missed
06:11				offensive dead ball rebound (1)
06:11				12 NELSON S substitution out
06:11				22 WHALEN S substitution in
06:11	3 SCHOMMER J substitution out			
06:11	1 KIENITZ B substitution in			
06:06		27-27	0	2 KIDDER J 2pt FG second chance in the paint, driving layup made (6)
05:55	22 BIEWEN A 2pt FG in the paint, layup missed			
05:52	21 SWANSON S offensive rebound (5)			
05:35	15 OLSON W 2pt FG second chance in the paint, pull up jump shot made (2)	29-27	2	
05:35	21 SWANSON S assist (2)			
05:16				1 HOFFMAN J 2pt FG outside the paint, jump shot blocked
05:16	11 KOCH C block (1)			
05:12	22 BIEWEN A defensive rebound (2)			
05:05	21 SWANSON S 2pt FG in the paint, layup made (7)	31-27	4	
04:55	21 SWANSON S foul personal (2 - 4)			2 KIDDER J foul drawn (2)
04:55	11 KOCH C substitution out			
04:55	4 WIEKER E substitution in			
04:55	21 SWANSON S substitution out			
04:55	2 ANDERSON C substitution in			
04:37				1 HOFFMAN J 3pt FG , jump shot missed
04:35	4 WIEKER E defensive rebound (2)			
04:30	4 WIEKER E turnover bad pass (1)			1 HOFFMAN J steal (1)
04:06	22 BIEWEN A steal (1)			2 KIDDER J turnover bad pass (2)
04:03	22 BIEWEN A foul drawn (1)			2 KIDDER J foul shooting (1 - 2)
04:03	22 BIEWEN A free throw fast break 1 - 2 missed			
04:03	offensive dead ball rebound (2)			
04:03	15 OLSON W substitution out			
04:03	32 GUSE J substitution in			
04:03				1 HOFFMAN J substitution out
04:03				21 JENSEN T substitution in
04:03	22 BIEWEN A free throw fast break 2 - 2 made (3)	32-27	5	
04:03	1 KIENITZ B substitution out			
04:03	2 ANDERSON C substitution out			
04:03	22 BIEWEN A substitution out			
04:03	3 SCHOMMER J substitution in			
04:03	11 KOCH C substitution in			
04:03	21 SWANSON S substitution in			



Officials:

Game Time	GAC	Score	Diff	BUM
03:45				21 JENSEN T 2pt FG in the paint, layup missed
03:42				2 KIDDER J offensive rebound (4)
03:39				22 WHALEN S 3pt FG second chance, jump shot missed
03:37	4 WIEKER E defensive rebound (3)			
03:29	4 WIEKER E 2pt FG in the paint, layup missed			
03:27	32 GUSE J offensive rebound (3)			
03:26	32 GUSE J 2pt FG second chance in the paint, layup missed			
03:24				2 KIDDER J defensive rebound (5)
03:18	21 SWANSON S steal (1)			0 THOMSEN P turnover lost ball (1)
03:14	32 GUSE J foul drawn (1)			2 KIDDER J foul shooting (2 - 3)
03:14	32 GUSE J free throw fast break 1 - 2 missed			
03:14	offensive dead ball rebound (3)			
03:14	21 SWANSON S substitution out			
03:14	22 BIEWEN A substitution in			
03:14				2 KIDDER J substitution out
03:14				5 BOETTCHER C substitution in
03:14	32 GUSE J free throw fast break 2 - 2 missed			
03:11	32 GUSE J offensive rebound (4)			
03:10	3 SCHOMMER J 3pt FG from turnover second chance, jump shot made (19)	35-27	8	
03:10	32 GUSE J assist (1)			
03:08				Timeout 30 Sec
02:42	32 GUSE J steal (1)			21 JENSEN T turnover bad pass (1)
02:30	4 WIEKER E 2pt FG from turnover in the paint, layup made (4)	37-27	10	
02:19				22 WHALEN S foul class A technical (2 - 4)
02:19				22 WHALEN S turnover offensive (1)
02:09	3 SCHOMMER J free throw 1 - 1 missed			
02:09				defensive dead ball rebound (2)
01:59				22 WHALEN S substitution out
01:59				4 ZILMER S substitution in
01:59	4 WIEKER E foul shooting (1 - 5)			4 ZILMER S foul drawn (1)
01:59		37-28	9	4 ZILMER S free throw 1 - 2 made (4)
01:59	32 GUSE J substitution out			
01:59	15 OLSON W substitution in			
01:59		37-29	8	4 ZILMER S free throw 2 - 2 made (5)
01:48	3 SCHOMMER J 2pt FG in the paint, floating jump shot made (21)	39-29	10	
01:22				0 THOMSEN P 2pt FG in the paint, layup blocked
01:22	11 KOCH C block (2)			
01:19	15 OLSON W defensive rebound (2)			
01:16	4 WIEKER E 2pt FG in the paint, layup blocked			
01:16				5 BOETTCHER C block (1)
01:13				24 DOELY Z defensive rebound (4)
01:02				0 THOMSEN P 3pt FG , jump shot missed
00:56				24 DOELY Z offensive rebound (5)
00:55		39-31	8	24 DOELY Z 2pt FG second chance in the paint, dunk, made (6)
00:37	3 SCHOMMER J 3pt FG , jump shot missed			
00:34				24 DOELY Z defensive rebound (6)
00:16		39-33	6	24 DOELY Z 2pt FG in the paint, layup made (8)
00:00	3 SCHOMMER J 2pt FG in the paint, pull up jump shot missed			



Official Basketball Play by Play - First Half
Bethel (MN) at Gust. Adolphus
01/25/23 Gus Young Court, Saint Peter, MN
2022-23 Men's Basketball

Game Time: 7:00 PM
Game Duration: 1:55
Attendance: 237

Officials:

Game Time	GAC	Score	Diff	BUM
00:00	22 BIEWEN A offensive rebound (3)			
END OF PERIOD				
GAC 39-33 BUM				



Officials:

Bethel (MN) - 33

NO.	Name	F	Min	FG	3P	FT	Rebounds			Fouls		TP	AS	TO	ST	Blocks		+/-
				M-A	M-A	M-A	OR	DR	TOT	PF	FD					BS	BA	
2	Joey Kidder	F	14:21	2-2	1-1	1-2	2	3	5	2	2	6	1	2	0	1	0	-2
24	Zach Doely	F	15:53	4-5	0-0	0-0	2	4	6	0	0	8	1	0	0	1	0	-3
0	Payton Thomsen	G	15:43	3-8	1-5	0-0	0	3	3	0	0	7	0	1	1	0	1	-3
1	Josh Hoffman	G	09:25	1-4	0-1	0-0	0	1	1	0	0	2	2	1	1	0	1	2
12	Sam Nelson	G	09:42	1-2	0-1	0-0	1	0	1	0	1	2	0	2	0	0	0	1
4	Sam Zilmer		08:31	1-3	1-2	2-2	0	0	0	0	1	5	0	0	0	0	1	-2
5	Caden Boettcher		07:21	0-0	0-0	0-0	0	1	1	0	1	0	0	0	0	1	0	-4
21	Tommy Jensen		10:35	1-5	1-3	0-0	0	1	1	0	0	3	1	1	0	0	0	-8
22	Solomon Whalen		08:29	0-1	0-1	0-0	0	0	0	2	0	0	1	1	0	0	0	-11
Team							0	0	0			0		0				
Totals				13-30	4-14	3-4	5	13	18	4	5	33	6	8	2	3	3	-6

Shooting By Period		
1st FG%	13-30	43.3%
3PT%	4-14	28.6%
FT%	3-4	75%
GM FG%	13-30	43.3%
3PT%	4-14	28.6%
FT%	3-4	75.0%

Dead Ball Rebounds: 1, 1

Technical Fouls: Whalen 1st:19

Gust. Adolphus - 39

NO.	Name	F	Min	FG	3P	FT	Rebounds			Fouls		TP	AS	TO	ST	Blocks		+/-
				M-A	M-A	M-A	OR	DR	TOT	PF	FD					BS	BA	
4	Evan Wieker	F	15:15	2-7	0-1	0-0	1	2	3	1	1	4	2	1	0	0	2	-1
21	Spencer Swanson	F	13:29	3-6	1-1	0-0	3	2	5	2	0	7	2	0	1	1	0	1
22	Adam Biewen	F	17:19	1-6	0-0	1-2	2	1	3	0	1	3	1	0	1	0	1	6
32	Jake Guse	C	10:32	0-2	0-0	0-2	2	2	4	0	1	0	1	0	1	0	0	2
3	Jordan Schommer	G	15:37	9-13	3-5	0-1	0	1	1	1	0	21	1	1	2	0	0	0
1	Brady Kienitz		06:15	1-3	0-2	0-0	0	2	2	0	0	2	0	0	0	0	0	6
2	Cam Anderson		03:07	0-0	0-0	0-0	1	0	1	0	0	0	0	0	0	0	0	4
15	Wyatt Olson		09:28	1-3	0-0	0-0	0	2	2	1	0	2	0	0	0	0	0	4
11	Carson Koch		08:58	0-0	0-0	0-0	1	0	1	0	0	0	0	0	0	2	0	8
Team							0	0	0			0		0				
Totals				17-40	4-9	1-5	10	12	22	5	3	39	7	2	5	3	3	6

Shooting By Period		
1st FG%	17-40	42.5%
3PT%	4-9	44.4%
FT%	1-5	20%
GM FG%	17-40	42.5%
3PT%	4-9	44.4%
FT%	1-5	20.0%

Dead Ball Rebounds: 3, 0

Technical Fouls: NONE

	BUM	GAC	Points from		Period by Period Scoring					
Biggest lead	6 (1 st 16:28)	10 (1 st 2:30)	Turnovers	3	13					
Best Scoring Run	5 (1 st 17:39)	10 (1 st 2:30)	Paint	18	26					
Lead Changes	3		Second Chance	7	10	BUM	33	46	13	92
Times Tied	4		Fast Breaks	0	3	GAC	39	40	17	96
Time with Lead	09:50	06:35	Bench	8	4					

**Period 2****Quarter Starters:**

GAC	3 Schommer J	4 Wieker E	21 Swanson S	22 Biewen A	32 Guse J
BUM	0 Thomsen P	1 Hoffman J	2 Kidder J	12 Nelson S	24 Doely Z

Game Time	GAC	Score	Diff	BUM
20:00	11 KOCH C substitution out			
20:00	15 OLSON W substitution out			
20:00	21 SWANSON S substitution in			
20:00	32 GUSE J substitution in			
20:00				4 ZILMER S substitution out
20:00				5 BOETTCHER C substitution out
20:00				21 JENSEN T substitution out
20:00				1 HOFFMAN J substitution in
20:00				2 KIDDER J substitution in
20:00				12 NELSON S substitution in
19:50		39-35	4	2 KIDDER J 2pt FG in the paint, driving layup made (8)
19:44	22 BIEWEN A 3pt FG , jump shot missed			
19:39				0 THOMSEN P defensive rebound (4)
19:22		39-37	2	2 KIDDER J 2pt FG in the paint, floating jump shot made (10)
19:11	3 SCHOMMER J 3pt FG , jump shot missed			
19:06	21 SWANSON S offensive rebound (6)			
19:05	21 SWANSON S 2pt FG second chance in the paint, layup made (9)	41-37	4	
18:51		41-39	2	24 DOELY Z 2pt FG in the paint, layup made (10)
18:51				2 KIDDER J assist (2)
18:35	22 BIEWEN A 2pt FG in the paint, layup missed			
18:34				defensive dead ball rebound (3)
18:34	22 BIEWEN A foul personal (1 - 1)			12 NELSON S foul drawn (2)
18:18				1 HOFFMAN J 3pt FG , jump shot missed
18:14				12 NELSON S offensive rebound (2)
18:12		41-42	-1	0 THOMSEN P 3pt FG second chance, jump shot made (10)
18:12				12 NELSON S assist (1)
17:59	4 WIEKER E 2pt FG in the paint, layup missed			
17:56				1 HOFFMAN J defensive rebound (2)
17:43				2 KIDDER J 2pt FG in the paint, layup missed
17:43				2 KIDDER J offensive rebound (6)
17:43	3 SCHOMMER J foul personal (2 - 2)			2 KIDDER J foul drawn (3)
17:36		41-45	-4	12 NELSON S 3pt FG second chance, jump shot made (5)
17:36				2 KIDDER J assist (3)
17:28	4 WIEKER E 2pt FG fast break in the paint, driving layup made (6)	43-45	-2	
17:28	Timeout 30 Sec			
17:13		43-47	-4	24 DOELY Z 2pt FG in the paint, layup made (12)
16:53	22 BIEWEN A turnover lost ball (1)			0 THOMSEN P steal (2)
16:48	32 GUSE J steal (2)			0 THOMSEN P turnover lost ball (2)
16:39	3 SCHOMMER J 3pt FG from turnover, jump shot missed			
16:37	22 BIEWEN A offensive rebound (4)			
16:36	22 BIEWEN A 2pt FG from turnover second chance in the paint, layup made (5)	45-47	-2	

**Bethel (MN) at Gust. Adolphus**01/25/23 Gus Young Court, Saint Peter, MN
2022-23 Men's Basketball

Game Time: 7:00 PM

Game Duration: 1:55

Attendance: 237

Officials:

Game Time	GAC	Score	Diff	BUM
16:27				1 HOFFMAN J 3pt FG , jump shot missed
16:25	32 GUSE J defensive rebound (5)			
16:25	32 GUSE J foul drawn (2)			1 HOFFMAN J foul personal (1 - 1)
16:25	32 GUSE J substitution out			
16:25	15 OLSON W substitution in			
16:06	15 OLSON W 2pt FG in the paint, layup blocked			
16:06				24 DOELY Z block (2)
16:06	offensive dead ball rebound (4)			
15:55	21 SWANSON S 2pt FG second chance in the paint, layup made (11)	47-47	0	
15:43	4 WIEKER E foul shooting (2 - 3)			1 HOFFMAN J foul drawn (1)
15:43				1 HOFFMAN J free throw 1 - 2 missed
15:43				offensive dead ball rebound (4)
15:43	3 SCHOMMER J substitution out			
15:43	1 KIENITZ B substitution in			
15:43				12 NELSON S substitution out
15:43				21 JENSEN T substitution in
15:43		47-48	-1	1 HOFFMAN J free throw 2 - 2 made (3)
15:43				1 HOFFMAN J substitution out
15:43				4 ZILMER S substitution in
15:32	4 WIEKER E turnover out of bounds (2)			
15:32	4 WIEKER E substitution out			
15:32	11 KOCH C substitution in			
15:13		47-51	-4	4 ZILMER S 3pt FG from turnover, jump shot made (8)
15:13				2 KIDDER J assist (4)
15:00	21 SWANSON S 3pt FG , jump shot made (14)	50-51	-1	
15:00	Timeout 60 Sec			
14:29		50-54	-4	2 KIDDER J 3pt FG , jump shot made (13)
14:29				24 DOELY Z assist (2)
14:18	15 OLSON W 2pt FG in the paint, layup made (4)	52-54	-2	
14:18	15 OLSON W foul drawn (1)			24 DOELY Z foul shooting (1 - 2)
14:18	1 KIENITZ B substitution out			
14:18	4 WIEKER E substitution in			
14:18	15 OLSON W free throw 1 - 1 missed			
14:17				24 DOELY Z defensive rebound (7)
13:48		52-57	-5	4 ZILMER S 3pt FG , jump shot made (11)
13:48				24 DOELY Z assist (3)
13:33	21 SWANSON S 2pt FG in the paint, layup made (16)	54-57	-3	
13:27	22 BIEWEN A foul personal (2 - 4)			2 KIDDER J foul drawn (4)
13:27	22 BIEWEN A substitution out			
13:27	3 SCHOMMER J substitution in			
13:27				24 DOELY Z substitution out
13:27				5 BOETTCHER C substitution in
13:21				21 JENSEN T 3pt FG , jump shot missed
13:18	3 SCHOMMER J defensive rebound (2)			
13:10	4 WIEKER E 2pt FG in the paint, driving layup made (8)	56-57	-1	
13:01		56-59	-3	2 KIDDER J 2pt FG in the paint, driving layup made (15)
12:31	21 SWANSON S 2pt FG in the paint, turnaround jump shot missed			
12:28				5 BOETTCHER C defensive rebound (2)



Bethel (MN) at Gust. Adolphus

01/25/23 Gus Young Court, Saint Peter, MN
2022-23 Men's Basketball

Game Time: 7:00 PM
Game Duration: 1:55
Attendance: 237

Officials:

Game Time	GAC	Score	Diff	BUM
12:15	11 KOCH C foul personal (1 - 5)			0 THOMSEN P foul drawn (1)
12:01				5 BOETTCHER C 2pt FG in the paint, layup missed
11:58	4 WIEKER E defensive rebound (4)			
11:56	15 OLSON W foul offensive (2 - 6)			21 JENSEN T foul drawn (1)
11:56	15 OLSON W turnover offensive (1)			
11:56	15 OLSON W substitution out			
11:56	32 GUSE J substitution in			
11:56				0 THOMSEN P substitution out
11:56				22 WHALEN S substitution in
11:38				2 KIDDER J 2pt FG from turnover in the paint, layup blocked
11:38	32 GUSE J block (1)			
11:35	3 SCHOMMER J defensive rebound (3)			
11:31	4 WIEKER E 2pt FG in the paint, jump shot missed			
11:29				4 ZILMER S defensive rebound (1)
11:29				22 WHALEN S foul class B technical (2 - 2)
11:29				22 WHALEN S turnover offensive (2)
11:29	21 SWANSON S free throw 1 - 1 missed			
11:29				defensive dead ball rebound (5)
11:29				21 JENSEN T substitution out
11:29				24 DOELY Z substitution in
11:21	32 GUSE J foul personal (1 - 7)			24 DOELY Z foul drawn (1)
11:21		56-60	-4	24 DOELY Z 1&1 free throw 1 made (13)
11:21				24 DOELY Z 1&1 free throw 2 missed
11:20	3 SCHOMMER J defensive rebound (4)			
11:08	4 WIEKER E 2pt FG in the paint, layup missed			
11:06				24 DOELY Z defensive rebound (8)
11:05				24 DOELY Z turnover bad pass (1)
11:05	4 WIEKER E substitution out			
11:05	22 BIEWEN A substitution in			
11:05				Timeout 60 Sec
10:55	3 SCHOMMER J 3pt FG from turnover, jump shot made (24)	59-60	-1	
10:55	32 GUSE J assist (2)			
10:20				4 ZILMER S 2pt FG outside the paint, jump shot missed
10:16	22 BIEWEN A defensive rebound (5)			
10:04	21 SWANSON S 2pt FG in the paint, hook shot made (18)	61-60	1	
09:52		61-63	-2	4 ZILMER S 3pt FG , jump shot made (14)
09:52				2 KIDDER J assist (5)
09:22	21 SWANSON S foul drawn (1)			24 DOELY Z foul shooting (2 - 3)
09:22	21 SWANSON S free throw 1 - 2 made (19)	62-63	-1	
09:22				2 KIDDER J substitution out
09:22				5 BOETTCHER C substitution out
09:22				22 WHALEN S substitution out
09:22				0 THOMSEN P substitution in
09:22				1 HOFFMAN J substitution in
09:22				21 JENSEN T substitution in
09:22	21 SWANSON S free throw 2 - 2 missed			
09:21				21 JENSEN T defensive rebound (2)
09:06		62-65	-3	24 DOELY Z 2pt FG in the paint, layup made (15)
09:06				1 HOFFMAN J assist (3)



Bethel (MN) at Gust. Adolphus

01/25/23 Gus Young Court, Saint Peter, MN
2022-23 Men's Basketball

Game Time: 7:00 PM
Game Duration: 1:55
Attendance: 237

Officials:

Game Time	GAC	Score	Diff	BUM
08:51	3 SCHOMMER J 2pt FG outside the paint, jump shot missed			
08:49				1 HOFFMAN J defensive rebound (3)
08:33	22 BIEWEN A foul personal (3 - 8)			24 DOELY Z foul drawn (2)
08:33	32 GUSE J substitution out			
08:33	15 OLSON W substitution in			
08:33				4 ZILMER S substitution out
08:33				2 KIDDER J substitution in
08:33		62-66	-4	24 DOELY Z 1&1 free throw 1 made (16)
08:33	11 KOCH C substitution out			
08:33	4 WIEKER E substitution in			
08:33		62-67	-5	24 DOELY Z 1&1 free throw 2 made (17)
08:04	4 WIEKER E foul drawn (2)			1 HOFFMAN J foul shooting (2 - 4)
08:04	4 WIEKER E free throw 1 - 2 made (9)	63-67	-4	
08:03	4 WIEKER E free throw 2 - 2 missed			
08:02				2 KIDDER J defensive rebound (7)
07:53				2 KIDDER J turnover out of bounds (3)
07:39	15 OLSON W 2pt FG from turnover in the paint, layup made (6)	65-67	-2	
07:13				24 DOELY Z turnover out of bounds (2)
06:59	21 SWANSON S foul offensive (3 - 9)			21 JENSEN T foul drawn (2)
06:59	21 SWANSON S turnover offensive (1)			
06:59				1 HOFFMAN J substitution out
06:59				4 ZILMER S substitution in
06:59	22 BIEWEN A substitution out			
06:59	11 KOCH C substitution in			
06:51	3 SCHOMMER J foul personal (3 - 10)			2 KIDDER J foul drawn (5)
06:51		65-68	-3	2 KIDDER J free throw 1 - 2 made (16)
06:51		65-69	-4	2 KIDDER J free throw 2 - 2 made (17)
06:32	4 WIEKER E 2pt FG outside the paint, jump shot missed			
06:29				0 THOMSEN P defensive rebound (5)
06:27	21 SWANSON S foul shooting (4 - 11)			2 KIDDER J foul drawn (6)
06:27				2 KIDDER J free throw fast break 1 - 2 missed
06:27				offensive dead ball rebound (6)
06:27		65-70	-5	2 KIDDER J free throw fast break 2 - 2 made (18)
06:09	15 OLSON W 2pt FG in the paint, layup missed			
06:07				2 KIDDER J defensive rebound (8)
05:46				2 KIDDER J 2pt FG in the paint, layup missed
05:44	15 OLSON W defensive rebound (3)			
05:22	15 OLSON W 2pt FG in the paint, driving layup made (8)	67-70	-3	
05:22	4 WIEKER E assist (3)			
05:21	Timeout 60 Sec			
05:00				2 KIDDER J 2pt FG in the paint, layup missed
04:57				21 JENSEN T offensive rebound (3)
04:45				4 ZILMER S 2pt FG second chance outside the paint, pull up jump shot missed
04:42	4 WIEKER E defensive rebound (5)			
04:22	15 OLSON W 2pt FG in the paint, layup made (10)	69-70	-1	
03:57	3 SCHOMMER J foul drawn (1)			2 KIDDER J foul offensive (3 - 5)
03:57				2 KIDDER J turnover offensive (4)
03:45	15 OLSON W 2pt FG from turnover in the paint, layup made (12)	71-70	1	

**Bethel (MN) at Gust. Adolphus**01/25/23 Gus Young Court, Saint Peter, MN
2022-23 Men's Basketball

Game Time: 7:00 PM

Game Duration: 1:55

Attendance: 237

Officials:

Game Time	GAC	Score	Diff	BUM
03:45	21 SWANSON S assist (3)			
03:28				4 ZILMER S 3pt FG , jump shot missed
03:25				2 KIDDER J offensive rebound (9)
03:22		71-72	-1	24 DOELY Z 2pt FG second chance outside the paint, floating jump shot made (19)
03:22				21 JENSEN T assist (2)
03:20				Timeout 30 Sec
03:02	4 WIEKER E 2pt FG in the paint, layup missed			
02:59	15 OLSON W offensive rebound (4)			
02:58	15 OLSON W foul drawn (2)			24 DOELY Z foul shooting (3 - 6)
02:38	15 OLSON W free throw 1 - 2 made (13)	72-72	0	
02:26	15 OLSON W free throw 2 - 2 made (14)	73-72	1	
02:34	3 SCHOMMER J foul shooting (4 - 12)			0 THOMSEN P foul drawn (2)
02:34				0 THOMSEN P free throw fast break 1 - 2 missed
02:34				offensive dead ball rebound (7)
02:34				21 JENSEN T substitution out
02:34				1 HOFFMAN J substitution in
02:34				0 THOMSEN P free throw fast break 2 - 2 missed
02:34	4 WIEKER E defensive rebound (6)			
02:19	3 SCHOMMER J 3pt FG , jump shot missed			
02:16	21 SWANSON S offensive rebound (7)			
02:16	21 SWANSON S 2pt FG second chance in the paint, layup made (21)	75-72	3	
02:00				2 KIDDER J 2pt FG in the paint, layup missed
01:57	3 SCHOMMER J defensive rebound (5)			
01:47	3 SCHOMMER J turnover lost ball (2)			4 ZILMER S steal (1)
01:43	4 WIEKER E foul shooting (3 - 13)			1 HOFFMAN J foul drawn (2)
01:43		75-73	2	1 HOFFMAN J free throw fast break 1 - 2 made (4)
01:43				0 THOMSEN P substitution out
01:43				22 WHALEN S substitution in
01:43		75-74	1	1 HOFFMAN J free throw fast break 2 - 2 made (5)
01:27	21 SWANSON S 2pt FG in the paint, layup missed			
01:25	21 SWANSON S offensive rebound (8)			
01:24	21 SWANSON S 2pt FG second chance in the paint, layup made (23)	77-74	3	
01:16		77-76	1	24 DOELY Z 2pt FG fast break in the paint, layup made (21)
01:16				2 KIDDER J assist (6)
00:59	21 SWANSON S 2pt FG in the paint, layup made (25)	79-76	3	
00:58	Timeout 60 Sec			
00:58	3 SCHOMMER J substitution out			
00:58	22 BIEWEN A substitution in			
00:58				1 HOFFMAN J substitution out
00:58				22 WHALEN S substitution out
00:58				0 THOMSEN P substitution in
00:58				21 JENSEN T substitution in
00:38	11 KOCH C foul personal (2 - 14)			2 KIDDER J foul drawn (7)
00:38				2 KIDDER J free throw 1 - 2 missed
00:38				offensive dead ball rebound (8)
00:38	22 BIEWEN A substitution out			
00:38	3 SCHOMMER J substitution in			



Bethel (MN) at Gust. Adolphus

01/25/23 Gus Young Court, Saint Peter, MN
2022-23 Men's Basketball

Officials:

Game Time	GAC	Score	Diff	BUM
00:38				0 THOMSEN P substitution out
00:38				21 JENSEN T substitution out
00:38				1 HOFFMAN J substitution in
00:38				22 WHALEN S substitution in
00:38		79-77	2	2 KIDDER J free throw 2 - 2 made (19)
00:17	21 SWANSON S foul drawn (2)			2 KIDDER J foul personal (4 - 7)
00:17	3 SCHOMMER J substitution out			
00:17	22 BIEWEN A substitution in			
00:17				1 HOFFMAN J substitution out
00:17				22 WHALEN S substitution out
00:17				0 THOMSEN P substitution in
00:17				21 JENSEN T substitution in
00:16	21 SWANSON S 1&1 free throw 1 missed			
00:15				0 THOMSEN P defensive rebound (6)
00:09				Timeout 60 Sec
00:07	22 BIEWEN A foul personal (4 - 15)			2 KIDDER J foul drawn (8)
00:07	22 BIEWEN A substitution out			
00:07	3 SCHOMMER J substitution in			
00:07				21 JENSEN T substitution out
00:07				1 HOFFMAN J substitution in
00:07		79-78	1	2 KIDDER J free throw 1 - 2 made (20)
00:07		79-79	0	2 KIDDER J free throw 2 - 2 made (21)
00:07				0 THOMSEN P substitution out
00:07				22 WHALEN S substitution in
00:07	Timeout 60 Sec			
00:07				Timeout 60 Sec
END OF PERIOD				
GAC 79-79 BUM				



Bethel (MN) at Gust. Adolphus

01/25/23 Gus Young Court, Saint Peter, MN
2022-23 Men's Basketball

Game Time: 7:00 PM
Game Duration: 1:55
Attendance: 237

Officials:

Bethel (MN) - 46

NO.	Name	Min	FG			Rebounds			Fouls		TP	AS	TO	ST	Blocks		+/-
			M-A	M-A	M-A	OR	DR	TOT	PF	FD					BS	BA	
2	Joey Kidder	F 19:11	4-9	1-1	6-8	2	2	4	2	6	15	5	2	0	0	1	4
24	Zach Doely	F 18:02	5-5	0-0	3-4	0	2	2	3	2	13	2	2	0	1	0	6
0	Payton Thomsen	G 16:14	1-1	1-1	0-2	0	3	3	0	2	3	0	1	1	0	0	8
1	Josh Hoffman	G 08:43	0-2	0-2	3-4	0	2	2	2	2	3	1	0	0	0	0	9
12	Sam Nelson	G 04:17	1-1	1-1	0-0	1	0	1	0	1	3	1	0	0	0	0	6
4	Sam Zilmer	14:09	3-6	3-4	0-0	0	1	1	0	0	9	0	0	1	0	0	0
21	Tommy Jensen	11:33	0-1	0-1	0-0	1	1	2	0	2	0	1	0	0	0	0	1
5	Caden Boettcher	04:05	0-1	0-0	0-0	0	1	1	0	0	0	0	0	0	0	0	-2
22	Solomon Whalen	03:46	0-0	0-0	0-0	0	0	0	0	0	0	0	1	0	0	0	-2
Team						0	0	0			0		0				
Totals			14-26	6-10	12-18	4	12	16	7	15	46	10	6	2	1	1	6

Shooting By Period		
2 nd FG%	14-26	53.8%
3PT%	6-10	60.0%
FT%	12-18	66.7%
GM FG%	14-26	53.8%
3PT%	6-10	60.0%
FT%	12-18	66.7%

Dead Ball Rebounds: 4, 2

Technical Fouls: Whalen 2nd 11:29

Gust. Adolphus - 40

NO.	Name	Min	FG			Rebounds			Fouls		TP	AS	TO	ST	Blocks		+/-
			M-A	M-A	M-A	OR	DR	TOT	PF	FD					BS	BA	
4	Evan Wieker	F 16:14	2-7	0-0	1-2	0	3	3	2	1	5	1	1	0	0	0	-5
21	Spencer Swanson	F 20:00	8-10	1-1	1-4	3	0	3	2	2	18	1	1	0	0	0	-6
22	Adam Biewen	F 11:10	1-3	0-1	0-0	1	1	2	4	0	2	0	1	0	0	0	-7
32	Jake Guse	C 06:58	0-0	0-0	0-0	0	1	1	1	1	0	1	0	1	1	0	-8
3	Jordan Schommer	G 17:13	1-5	1-4	0-0	0	4	4	3	1	3	0	1	0	0	0	-3
15	Wyatt Olson	13:02	5-7	0-0	2-3	1	1	2	1	2	12	0	1	0	0	1	2
1	Brady Kienitz	01:25	0-0	0-0	0-0	0	0	0	0	0	0	0	0	0	0	0	-2
11	Carson Koch	13:58	0-0	0-0	0-0	0	0	0	2	0	0	0	0	0	0	0	-1
Team						0	0	0			0		0				
Totals			17-32	2-6	4-9	5	10	15	15	7	40	3	5	1	1	1	-6

Shooting By Period		
2 nd FG%	17-32	53.1%
3PT%	2-6	33.3%
FT%	4-9	44.4%
GM FG%	17-32	53.1%
3PT%	2-6	33.3%
FT%	4-9	44.4%

Dead Ball Rebounds: 1, 0

Technical Fouls: NONE

	BUM	GAC	Points from	BUM	GAC	Period by Period Scoring				
Biggest lead	5 (2 nd 13:48)	4 (2 nd 19:50)	Turnovers	7	9		1st	2nd	OT1	TOT
Best Scoring Run	8 (2 nd 17:36)	6 (2 nd 3:45)	Paint	14	30	BUM	33	46	13	92
Lead Changes	6		Second Chance	8	12	GAC	39	40	17	96
Times Tied	3		Fast Breaks	5	2					
Time with Lead	14:47	04:32	Bench	9	12					



Officials:

Overtime 1

Quarter Starters:

GAC	3 Schommer J	4 Wieker E	11 Koch C	15 Olson W	21 Swanson S
BUM	0 Thomsen P	2 Kidder J	4 Zilmer S	21 Jensen T	24 Doely Z

Game Time	GAC	Score	Diff	BUM
05:00				1 HOFFMAN J substitution out
05:00				22 WHALEN S substitution out
05:00				0 THOMSEN P substitution in
05:00				21 JENSEN T substitution in
05:00	15 OLSON W jumpball lost			24 DOELY Z jumpball won
04:43				24 DOELY Z 2pt FG in the paint, dunk, missed
04:40	3 SCHOMMER J defensive rebound (6)			
04:27	21 SWANSON S foul drawn (3)			4 ZILMER S foul shooting (1 - 8)
04:27	21 SWANSON S free throw 1 - 2 made (26)	80-79	1	
04:27	21 SWANSON S free throw 2 - 2 made (27)	81-79	2	
04:08		81-81	0	0 THOMSEN P 2pt FG in the paint, layup made (12)
04:08	15 OLSON W foul shooting (3 - 16)			0 THOMSEN P foul drawn (3)
04:08		81-82	-1	0 THOMSEN P free throw 1 - 1 made (13)
03:52	3 SCHOMMER J 2pt FG in the paint, layup made (26)	83-82	1	
03:46				2 KIDDER J turnover out of bounds (5)
03:31	21 SWANSON S 2pt FG from turnover in the paint, layup made (29)	85-82	3	
03:13	21 SWANSON S steal (2)			0 THOMSEN P turnover bad pass (3)
03:08	21 SWANSON S 2pt FG fast break from turnover in the paint, layup made (31)	87-82	5	
02:40				21 JENSEN T 3pt FG , jump shot missed
02:37	4 WIEKER E defensive rebound (7)			
02:37	4 WIEKER E foul drawn (3)			4 ZILMER S foul personal (2 - 9)
02:37	4 WIEKER E free throw fast break 1 - 2 made (10)	88-82	6	
02:37	4 WIEKER E free throw fast break 2 - 2 made (11)	89-82	7	
02:25	11 KOCH C foul personal (3 - 17)			2 KIDDER J foul drawn (9)
02:25		89-83	6	2 KIDDER J free throw 1 - 2 made (22)
02:25				0 THOMSEN P substitution out
02:25				21 JENSEN T substitution out
02:25				1 HOFFMAN J substitution in
02:25				22 WHALEN S substitution in
02:25		89-84	5	2 KIDDER J free throw 2 - 2 made (23)
02:08	21 SWANSON S 2pt FG in the paint, layup made (33)	91-84	7	
01:54		91-86	5	1 HOFFMAN J 2pt FG in the paint, layup made (7)
01:26	21 SWANSON S 2pt FG in the paint, turnaround jump shot made (35)	93-86	7	
01:11	4 WIEKER E foul personal (4 - 18)			1 HOFFMAN J foul drawn (3)
01:11				1 HOFFMAN J free throw 1 - 2 missed
01:11				offensive dead ball rebound (9)
01:11		93-87	6	1 HOFFMAN J free throw 2 - 2 made (8)
00:40	21 SWANSON S 2pt FG in the paint, layup missed			
00:39				defensive dead ball rebound (10)
00:39				1 HOFFMAN J substitution out
00:39				22 WHALEN S substitution out



Official Basketball Play by Play - 1st OT
Bethel (MN) at Gust. Adolphus
 01/25/23 Gus Young Court, Saint Peter, MN
 2022-23 Men's Basketball

Game Time: 7:00 PM
Game Duration: 1:55
Attendance: 237

Officials:

Game Time	GAC	Score	Diff	BUM
00:39				0 THOMSEN P substitution in
00:39				21 JENSEN T substitution in
00:28		93-89	4	2 KIDDER J 2pt FG in the paint, layup made (25)
00:28	11 KOCH C foul shooting (4 - 19)			2 KIDDER J foul drawn (10)
00:28				0 THOMSEN P substitution out
00:28				21 JENSEN T substitution out
00:28				1 HOFFMAN J substitution in
00:28				22 WHALEN S substitution in
00:28		93-90	3	2 KIDDER J free throw 1 - 1 made (26)
00:28				Timeout 60 Sec
00:26	21 SWANSON S foul drawn (4)			22 WHALEN S foul personal (3 - 10)
00:26	21 SWANSON S free throw fast break 1 - 2 made (36)	94-90	4	
00:26				1 HOFFMAN J substitution out
00:26				22 WHALEN S substitution out
00:26				0 THOMSEN P substitution in
00:26				21 JENSEN T substitution in
00:26	21 SWANSON S free throw fast break 2 - 2 made (37)	95-90	5	
00:13		95-92	3	24 DOELY Z 2pt FG in the paint, layup made (23)
00:07				0 THOMSEN P substitution out
00:07				2 KIDDER J substitution out
00:07				21 JENSEN T substitution out
00:07				1 HOFFMAN J substitution in
00:07				12 NELSON S substitution in
00:07				22 WHALEN S substitution in
00:07	21 SWANSON S foul drawn (5)			22 WHALEN S foul personal (4 - 11)
00:07				1 HOFFMAN J substitution out
00:07				12 NELSON S substitution out
00:07				22 WHALEN S substitution out
00:07				0 THOMSEN P substitution in
00:07				2 KIDDER J substitution in
00:07				21 JENSEN T substitution in
00:07				Timeout 30 Sec
00:07	21 SWANSON S free throw fast break 1 - 2 made (38)	96-92	4	
00:07	21 SWANSON S free throw fast break 2 - 2 missed			
00:05				24 DOELY Z defensive rebound (9)
00:00				2 KIDDER J 3pt FG , jump shot missed
00:00	defensive dead ball rebound (5)			
END OF GAME				
GAC 96-92 BUM				



Officials:

Bethel (MN) - 13

NO.	Name	F	Min	FG			3P			FT			Rebounds			Fouls		TP	AS	TO	ST	Blocks		+/-
				M-A	M-A	M-A	OR	DR	TOT	PF	FD	BS	BA											
2	Joey Kidder	F	05:00	1-2	0-1	3-3	0	0	0	0	2	5	0	1	0	0	0	0	0	0	0	0	-4	
24	Zach Doely	F	05:00	1-2	0-0	0-0	0	1	1	0	0	2	0	0	0	0	0	0	0	0	0	0	-4	
0	Payton Thomsen	G	03:13	1-1	0-0	1-1	0	0	0	0	1	3	0	1	0	0	0	0	0	0	0	0	-4	
1	Josh Hoffman	G	01:47	1-1	0-0	1-2	0	0	0	0	1	3	0	0	0	0	0	0	0	0	0	0	0	
12	Sam Nelson	G	00:00	0-0	0-0	0-0	0	0	0	0	0	0	0	0	0	0	0	0	0	0	0	0	0	
4	Sam Zillmer		05:00	0-0	0-0	0-0	0	0	0	0	2	0	0	0	0	0	0	0	0	0	0	0	-4	
21	Tommy Jensen		03:13	0-1	0-1	0-0	0	0	0	0	0	0	0	0	0	0	0	0	0	0	0	0	-4	
22	Solomon Whalen		01:47	0-0	0-0	0-0	0	0	0	0	2	0	0	0	0	0	0	0	0	0	0	0	0	
Team												0	0	0	0	0	0	0	0	0	0	0	0	
Totals				4-7	0-2	5-6	0	1	1	4	4	13	0	2	0	0	0	0	0	0	0	0	-4	

Shooting By Period		
OT FG%	4-7	57.1%
3PT%	0-2	0.0%
FT%	5-6	83.3%
GM FG%	4-7	57.1%
3PT%	0-2	0.0%
FT%	5-6	83.3%

Dead Ball Rebounds: 1, 1

Technical Fouls::NONE

Gust. Adolphus - 17

NO.	Name	F	Min	FG			3P			FT			Rebounds			Fouls		TP	AS	TO	ST	Blocks		+/-
				M-A	M-A	M-A	OR	DR	TOT	PF	FD	BS	BA											
4	Evan Wieker	F	05:00	0-0	0-0	2-2	0	1	1	1	1	2	0	0	0	0	0	0	0	0	0	0	4	
21	Spencer Swanson	F	05:00	4-5	0-0	5-6	0	0	0	0	3	13	0	0	1	0	0	0	0	0	0	0	4	
22	Adam Biewen	F	00:00	0-0	0-0	0-0	0	0	0	0	0	0	0	0	0	0	0	0	0	0	0	0	0	
32	Jake Guse	C	00:00	0-0	0-0	0-0	0	0	0	0	0	0	0	0	0	0	0	0	0	0	0	0	0	
3	Jordan Schommer	G	05:00	1-1	0-0	0-0	0	1	1	0	0	2	0	0	0	0	0	0	0	0	0	0	4	
11	Carson Koch		05:00	0-0	0-0	0-0	0	0	0	2	0	0	0	0	0	0	0	0	0	0	0	0	4	
15	Wyatt Olson		05:00	0-0	0-0	0-0	0	0	0	1	0	0	0	0	0	0	0	0	0	0	0	0	4	
Team												0	0	0	0	0	0	0	0	0	0	0		
Totals				5-6	0-0	7-8	0	2	2	4	4	17	0	0	1	0	0	0	0	0	0	0	4	

Shooting By Period		
OT FG%	5-6	83.3%
3PT%	0-0	0.0%
FT%	7-8	87.5%
GM FG%	5-6	83.3%
3PT%	0-0	0.0%
FT%	7-8	87.5%

Dead Ball Rebounds: 0, 1

Technical Fouls::NONE

	BUM	GAC
Biggest lead	1 (1 st OT 4:08)	7 (1 st OT 2:37)
Best Scoring Run	4 (1 st OT 0:28)	8 (1 st OT 2:37)
Lead Changes	3	
Times Tied	1	
Time with Lead	00:16	04:11

Points from	BUM	GAC
Turnovers	0	4
Paint	8	10
Second Chance	0	0
Fast Breaks	0	7
Bench	0	0

	Period by Period Scoring			
	1st	2nd	OT1	TOT
BUM	33	46	13	92
GAC	39	40	17	96



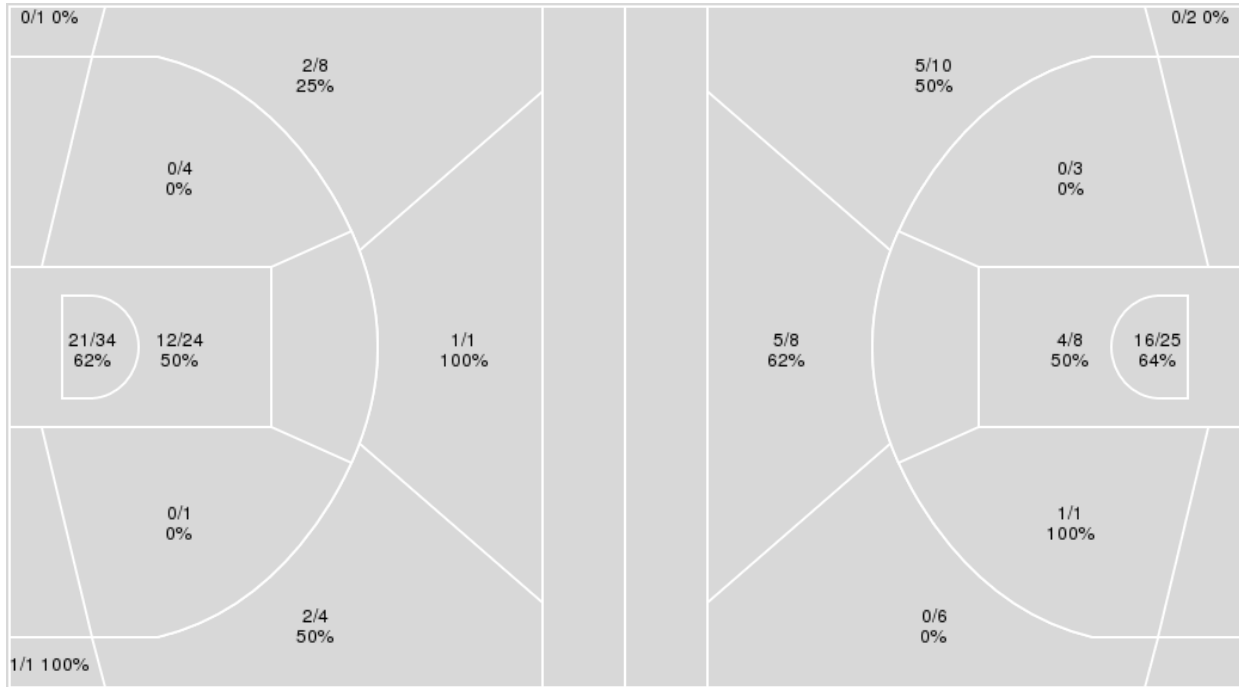
Officials:

{ Players => 1, 2, 3, 4, 5, 10, 11, 15, 20, 21, 22, 23, 24, 30, 32; } FG
 Types => All; Results => All;

{ Players => All; } FG Types => All; Results => All;

Gust. Adolphus

Bethel (MN)



Gust. Adolphus	M/A	%
Field Goals	39/78	50
2 Points	33/63	52
3 Points	6/15	40
Free Throws	12/22	55

Bethel (MN)	M/A	%
Field Goals	31/63	49
2 Points	21/37	57
3 Points	10/26	38
Free Throws	20/28	71



Bethel (MN) at Gust. Adolphus

01/25/23 Gus Young Court, Saint Peter, MN
2022-23 Men's Basketball

Game Time: 7:00 PM
Game Duration: 1:55
Attendance: 237

Officials:

Bethel (MN)

No	Name	Mins		Score		Points Diff		Points per Min		Assists		Rebounds		Steals		Turnovers	
		On	Off	On	Off	On	Off	On	Off	On	Off	On	Off	On	Off	On	Off
0	Payton Thomsen	35:10	09:50	71 - 70	21 - 26	1	-5	2.02	2.14	11	5	30	5	4	0	14	2
1	Josh Hoffman	19:55	25:05	49 - 38	43 - 58	11	-15	2.46	1.71	8	8	16	19	4	0	7	9
2	Joey Kidder	38:32	06:28	79 - 81	13 - 15	-2	-2	2.05	2.01	13	3	29	6	4	0	14	2
4	Sam Zilmer	27:40	17:20	57 - 63	35 - 33	-6	2	2.06	2.02	10	6	19	16	1	3	6	10
5	Caden Boettcher	11:26	33:34	16 - 22	76 - 74	-6	2	1.40	2.26	2	14	9	26	0	4	5	11
12	Sam Nelson	13:59	31:01	35 - 28	57 - 68	7	-11	2.50	1.84	8	8	14	21	2	2	4	12
21	Tommy Jensen	25:21	19:39	44 - 55	48 - 41	-11	7	1.74	2.44	8	8	21	14	0	4	10	6
22	Solomon Whalen	14:02	30:58	23 - 36	69 - 60	-13	9	1.64	2.23	5	11	7	28	1	3	6	10
24	Zach Doely	38:55	06:05	86 - 87	6 - 9	-1	-3	2.21	0.99	15	1	30	5	4	0	14	2

Gust. Adolphus

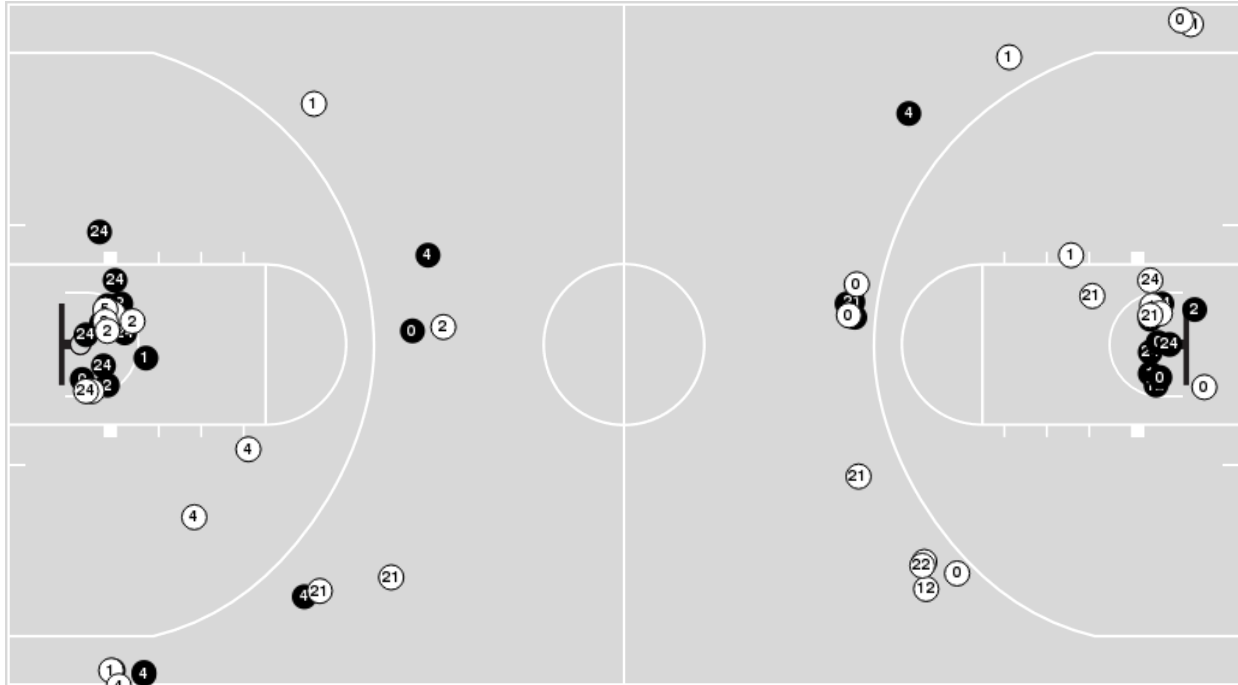
No	Name	Mins		Score		Points Diff		Points per Min		Assists		Rebounds		Steals		Turnovers	
		On	Off	On	Off	On	Off	On	Off	On	Off	On	Off	On	Off	On	Off
1	Brady Kienitz	07:40	37:20	17 - 13	79 - 79	4	0	2.22	2.12	2	8	12	27	1	6	2	5
2	Cam Anderson	03:07	41:53	5 - 1	91 - 91	4	0	1.60	2.17	1	9	6	33	1	6	1	6
3	Jordan Schommer	37:50	07:10	80 - 79	16 - 13	1	3	2.11	2.23	8	2	31	8	6	1	5	2
4	Evan Wieker	36:29	08:31	75 - 77	21 - 15	-2	6	2.06	2.47	7	3	31	8	7	0	7	0
11	Carson Koch	27:56	17:04	67 - 56	29 - 36	11	-7	2.40	1.70	5	5	25	14	3	4	2	5
15	Wyatt Olson	27:30	17:30	60 - 50	36 - 42	10	-6	2.18	2.06	4	6	25	14	2	5	5	2
21	Spencer Swanson	38:29	06:31	80 - 81	16 - 11	-1	5	2.08	2.46	9	1	31	8	5	2	6	1
22	Adam Biewen	28:29	16:31	60 - 61	36 - 31	-1	5	2.11	2.18	8	2	20	19	5	2	5	2
32	Jake Guse	17:30	27:30	36 - 42	60 - 50	-6	10	2.06	2.18	6	4	14	25	5	2	2	5



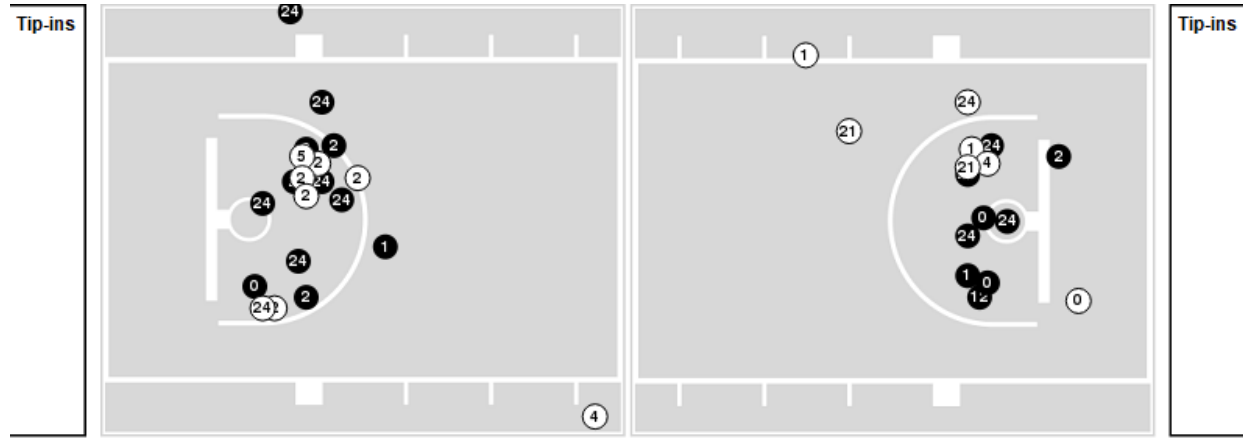
Officials:

Players => AllFG Types=>AllResults=>All
Bethel (MN)

All Field Goals



Blow Up Chart



● Made ○ Missed N - Player Number

Bethel (MN)	M/A	%
Field Goals	31/63	49
2 Points	21/37	57
3 Points	10/26	38
Free Throws	20/28	71

Bethel (MN)	M/A	%
Points in the Paint	40 (20 / 33)	61
Fast Break Points	5 (4/7)	57
Second Chance Points	15 (6/10)	60
Effective FG%	57	

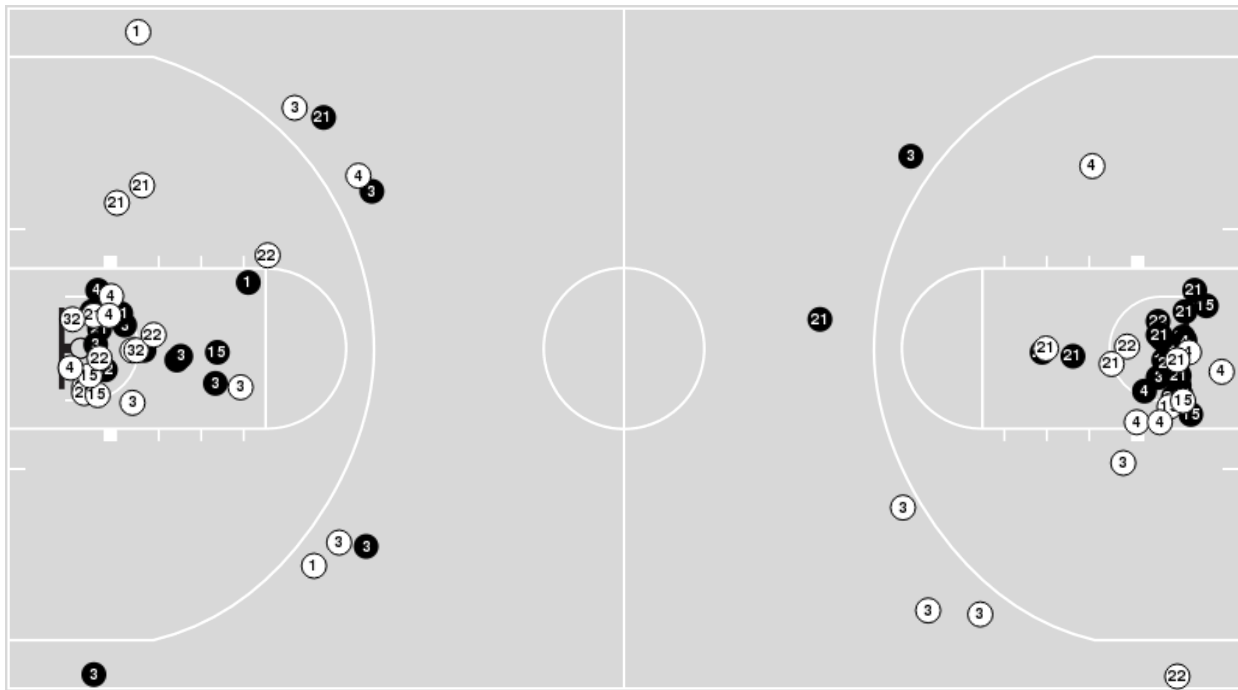


Officials:

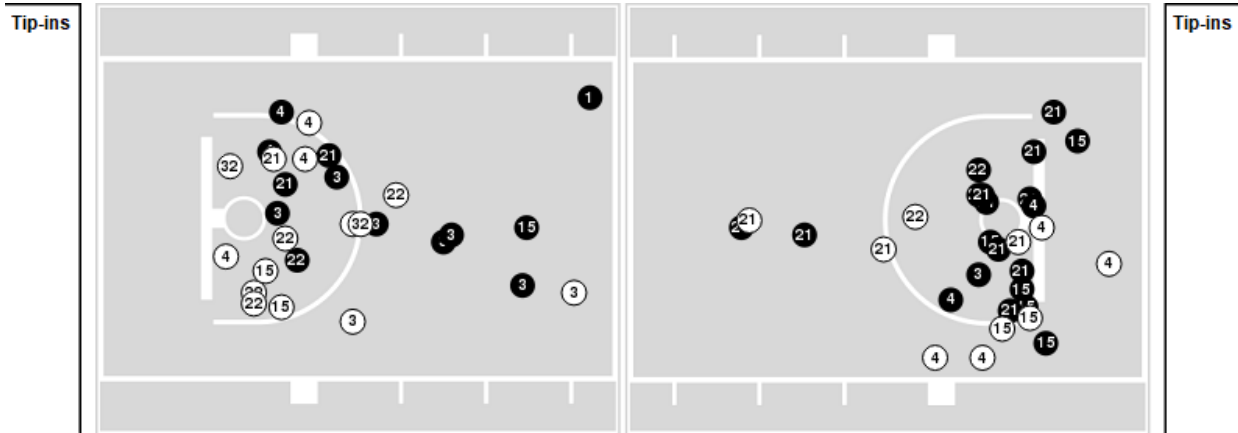
Players => 1, 2, 3, 4, 5, 10, 11, 15, 20, 21, 22, 23, 24, 30, 32FG Types=>AllResults=>All

Gust. Adolphus

All Field Goals



Blow Up Chart



● Made ○ Missed N - Player Number

Gust. Adolphus	M/A	%
Field Goals	39/78	50
2 Points	33/63	52
3 Points	6/15	40
Free Throws	12/22	55

Gust. Adolphus	M/A	%
Points in the Paint	66 (33 / 58)	57
Fast Break Points	12 (9/13)	69
Second Chance Points	22 (11/17)	65
Effective FG%	54	



Bethel (MN) at Gust. Adolphus

01/25/23 Gus Young Court, Saint Peter, MN
2022-23 Men's Basketball

Game Time: 7:00 PM
Game Duration: 1:55
Attendance: 237

Officials:

Bethel (MN)

Lineup	Quarter On	Time On	Quarter Off	Time Off	Time on Court	Score	Score Diff	Reb	Stl	Tov	Ass	PPP
0- Thomsen P/ 1- Hoffman J/ 2- Kidder J/ 12- Nelson S/ 24- Doely Z/	1	20:00	1	13:57	06:03	16-10	6	8	1	2	3	1.6000
0- Thomsen P/ 2- Kidder J/ 4- Zilmer S/ 5- Boettcher C/ 21- Jensen T/	1	13:57	1	11:42	02:15	1-4	-3	1	0	1	0	0.2907
2- Kidder J/ 4- Zilmer S/ 5- Boettcher C/ 21- Jensen T/ 22- Whalen S/	1	11:42	1	09:50	01:52	3-3	0	2	0	0	1	0.8721
4- Zilmer S/ 12- Nelson S/ 21- Jensen T/ 22- Whalen S/ 24- Doely Z/	1	09:50	1	07:25	02:25	5-8	-3	1	0	0	2	1.2500
0- Thomsen P/ 1- Hoffman J/ 2- Kidder J/ 12- Nelson S/ 24- Doely Z/	1	07:25	1	06:11	01:14	0-2	-2	1	0	1	0	0.0000
0- Thomsen P/ 1- Hoffman J/ 2- Kidder J/ 22- Whalen S/ 24- Doely Z/	1	06:11	1	04:03	02:08	2-4	-2	0	1	1	0	0.5000
0- Thomsen P/ 2- Kidder J/ 21- Jensen T/ 22- Whalen S/ 24- Doely Z/	1	04:03	1	03:14	00:49	0-1	-1	2	0	1	0	0.0000
0- Thomsen P/ 5- Boettcher C/ 21- Jensen T/ 22- Whalen S/ 24- Doely Z/	1	03:14	1	01:59	01:15	0-5	-5	0	0	2	0	0.0000
0- Thomsen P/ 4- Zilmer S/ 5- Boettcher C/ 21- Jensen T/ 24- Doely Z/	1	01:59	2	20:00	01:59	6-2	4	3	0	0	0	1.5464
0- Thomsen P/ 1- Hoffman J/ 2- Kidder J/ 12- Nelson S/ 24- Doely Z/	2	20:00	2	15:43	04:17	14-8	6	4	1	1	3	1.6588
0- Thomsen P/ 1- Hoffman J/ 2- Kidder J/ 21- Jensen T/ 24- Doely Z/	2	15:43	2	15:43	00:00	1-0	1	0	0	0	0	2.2727
0- Thomsen P/ 2- Kidder J/ 4- Zilmer S/ 21- Jensen T/ 24- Doely Z/	2	15:43	2	13:27	02:16	9-7	2	1	0	0	3	3.0000
0- Thomsen P/ 2- Kidder J/ 4- Zilmer S/ 5- Boettcher C/ 21- Jensen T/	2	13:27	2	11:56	01:31	2-2	0	1	0	0	0	0.6667
2- Kidder J/ 4- Zilmer S/ 5- Boettcher C/ 21- Jensen T/ 22- Whalen S/	2	11:56	2	11:29	00:27	0-0	0	1	0	1	0	0.0000
2- Kidder J/ 4- Zilmer S/ 5- Boettcher C/ 22- Whalen S/ 24- Doely Z/	2	11:29	2	09:22	02:07	4-6	-2	1	0	1	1	1.0309
0- Thomsen P/ 1- Hoffman J/ 4- Zilmer S/ 21- Jensen T/ 24- Doely Z/	2	09:22	2	08:33	00:49	2-0	2	2	0	0	1	2.0000
0- Thomsen P/ 1- Hoffman J/ 2- Kidder J/ 21- Jensen T/ 24- Doely Z/	2	08:33	2	06:59	01:34	2-3	-1	1	0	2	0	0.6944
0- Thomsen P/ 2- Kidder J/ 4- Zilmer S/ 21- Jensen T/ 24- Doely Z/	2	06:59	2	02:34	04:25	5-8	-3	4	0	1	1	0.8065
0- Thomsen P/ 1- Hoffman J/ 2- Kidder J/ 4- Zilmer S/ 24- Doely Z/	2	02:34	2	01:43	00:51	1-2	-1	0	1	0	0	0.5319
1- Hoffman J/ 2- Kidder J/ 4- Zilmer S/ 22- Whalen S/ 24- Doely Z/	2	01:43	2	00:58	00:44	3-4	-1	0	0	0	1	2.0833
0- Thomsen P/ 2- Kidder J/ 4- Zilmer S/ 21- Jensen T/ 24- Doely Z/	2	00:58	2	00:38	00:21	0-0	0	0	0	0	0	0.0000
1- Hoffman J/ 2- Kidder J/ 4- Zilmer S/ 22- Whalen S/ 24- Doely Z/	2	00:38	2	00:17	00:21	1-0	1	0	0	0	0	2.2727
0- Thomsen P/ 2- Kidder J/ 4- Zilmer S/ 21- Jensen T/ 24- Doely Z/	2	00:17	2	00:07	00:10	0-0	0	1	0	0	0	0.0000
0- Thomsen P/ 1- Hoffman J/ 2- Kidder J/ 4- Zilmer S/ 24- Doely Z/	2	00:07	2	00:07	00:00	2-0	2	0	0	0	0	2.2727
1- Hoffman J/ 2- Kidder J/ 4- Zilmer S/ 22- Whalen S/ 24- Doely Z/	2	00:07	OT1	05:00	00:07	0-0	0	0	0	0	0	0.0000
0- Thomsen P/ 2- Kidder J/ 4- Zilmer S/ 21- Jensen T/ 24- Doely Z/	OT1	05:00	OT1	02:25	02:35	4-10	-6	0	0	2	0	0.6803
1- Hoffman J/ 2- Kidder J/ 4- Zilmer S/ 22- Whalen S/ 24- Doely Z/	OT1	02:25	OT1	00:39	01:46	4-4	0	0	0	0	0	1.7241
0- Thomsen P/ 2- Kidder J/ 4- Zilmer S/ 21- Jensen T/ 24- Doely Z/	OT1	00:39	OT1	00:28	00:11	2-0	2	0	0	0	0	2.0000
1- Hoffman J/ 2- Kidder J/ 4- Zilmer S/ 22- Whalen S/ 24- Doely Z/	OT1	00:28	OT1	00:26	00:01	1-1	0	0	0	0	0	2.2727
0- Thomsen P/ 2- Kidder J/ 4- Zilmer S/ 21- Jensen T/ 24- Doely Z/	OT1	00:26	OT1	00:07	00:20	2-1	1	0	0	0	0	2.0000
1- Hoffman J/ 4- Zilmer S/ 12- Nelson S/ 22- Whalen S/ 24- Doely Z/	OT1	00:07	OT1	00:07	00:00	0-0	0	0	0	0	0	0.0000
0- Thomsen P/ 2- Kidder J/ 4- Zilmer S/ 21- Jensen T/ 24- Doely Z/	OT1	00:07	OT1	00:00	00:07	0-1	-1	1	0	0	0	0.0000



Bethel (MN) at Gust. Adolphus

01/25/23 Gus Young Court, Saint Peter, MN
2022-23 Men's Basketball

Game Time: 7:00 PM
Game Duration: 1:55
Attendance: 237

Officials:

Gust. Adolphus

Lineup	Quarter On	Time On	Quarter Off	Time Off	Time on Court	Score	Score Diff	Reb	Stl	Tov	Ass	PPP
3- Schommer J/ 4- Wieker E/ 21- Swanson S/ 22- Biewen A/ 32- Guse J/	1	20:00	1	13:57	06:03	10-16	-6	1	2	1	4	0.9091
1- Kienitz B/ 2- Anderson C/ 15- Olson W/ 21- Swanson S/ 22- Biewen A/	1	13:57	1	11:42	02:15	4-1	3	5	0	0	1	1.3333
1- Kienitz B/ 3- Schommer J/ 4- Wieker E/ 15- Olson W/ 21- Swanson S/	1	11:42	1	09:50	01:52	3-3	0	4	0	0	0	1.0000
3- Schommer J/ 4- Wieker E/ 11- Koch C/ 22- Biewen A/ 32- Guse J/	1	09:50	1	07:25	02:25	8-5	3	4	0	0	0	1.6000
3- Schommer J/ 11- Koch C/ 15- Olson W/ 21- Swanson S/ 22- Biewen A/	1	07:25	1	06:11	01:14	2-0	2	0	0	0	0	1.0000
1- Kienitz B/ 11- Koch C/ 15- Olson W/ 21- Swanson S/ 22- Biewen A/	1	06:11	1	04:55	01:16	4-2	2	2	0	0	1	2.0000
1- Kienitz B/ 4- Wieker E/ 15- Olson W/ 21- Swanson S/ 22- Biewen A/	1	04:55	1	04:55	00:00	0-0	0	0	0	0	0	0.0000
1- Kienitz B/ 2- Anderson C/ 4- Wieker E/ 15- Olson W/ 22- Biewen A/	1	04:55	1	04:03	00:52	0-0	0	1	1	1	0	0.0000
1- Kienitz B/ 2- Anderson C/ 4- Wieker E/ 22- Biewen A/ 32- Guse J/	1	04:03	1	04:03	00:00	1-0	1	0	0	0	0	2.2727
3- Schommer J/ 4- Wieker E/ 11- Koch C/ 21- Swanson S/ 32- Guse J/	1	04:03	1	03:14	00:49	0-0	0	2	1	0	0	0.0000
3- Schommer J/ 4- Wieker E/ 11- Koch C/ 22- Biewen A/ 32- Guse J/	1	03:14	1	01:59	01:15	5-1	4	1	1	0	1	2.6596
3- Schommer J/ 4- Wieker E/ 11- Koch C/ 15- Olson W/ 22- Biewen A/	1	01:59	2	20:00	01:59	2-5	-3	2	0	0	0	0.6667
3- Schommer J/ 4- Wieker E/ 21- Swanson S/ 22- Biewen A/ 32- Guse J/	2	20:00	2	16:25	03:35	6-14	-8	3	1	1	0	0.8571
3- Schommer J/ 4- Wieker E/ 15- Olson W/ 21- Swanson S/ 22- Biewen A/	2	16:25	2	15:43	00:42	2-0	2	0	0	0	0	1.0000
1- Kienitz B/ 4- Wieker E/ 15- Olson W/ 21- Swanson S/ 22- Biewen A/	2	15:43	2	15:32	00:11	0-1	-1	0	0	1	0	0.0000
1- Kienitz B/ 11- Koch C/ 15- Olson W/ 21- Swanson S/ 22- Biewen A/	2	15:32	2	14:18	01:14	5-6	-1	0	0	0	0	2.5000
4- Wieker E/ 11- Koch C/ 15- Olson W/ 21- Swanson S/ 22- Biewen A/	2	14:18	2	13:27	00:51	2-3	-1	0	0	0	0	1.3889
3- Schommer J/ 4- Wieker E/ 11- Koch C/ 15- Olson W/ 21- Swanson S/	2	13:27	2	11:56	01:31	2-2	0	2	0	1	0	0.6667
3- Schommer J/ 4- Wieker E/ 11- Koch C/ 21- Swanson S/ 32- Guse J/	2	11:56	2	11:05	00:51	0-1	-1	2	0	0	0	0.0000
3- Schommer J/ 11- Koch C/ 21- Swanson S/ 22- Biewen A/ 32- Guse J/	2	11:05	2	08:33	02:32	6-5	1	1	0	0	1	1.5464
3- Schommer J/ 11- Koch C/ 15- Olson W/ 21- Swanson S/ 22- Biewen A/	2	08:33	2	08:33	00:00	0-1	-1	0	0	0	0	0.0000
3- Schommer J/ 4- Wieker E/ 15- Olson W/ 21- Swanson S/ 22- Biewen A/	2	08:33	2	06:59	01:34	3-1	2	0	0	1	0	1.0417
3- Schommer J/ 4- Wieker E/ 11- Koch C/ 15- Olson W/ 21- Swanson S/	2	06:59	2	00:58	06:00	14-9	5	7	0	1	2	1.4170
4- Wieker E/ 11- Koch C/ 15- Olson W/ 21- Swanson S/ 22- Biewen A/	2	00:58	2	00:38	00:21	0-0	0	0	0	0	0	0.0000
3- Schommer J/ 4- Wieker E/ 11- Koch C/ 15- Olson W/ 21- Swanson S/	2	00:38	2	00:17	00:21	0-1	-1	0	0	0	0	0.0000
4- Wieker E/ 11- Koch C/ 15- Olson W/ 21- Swanson S/ 22- Biewen A/	2	00:17	2	00:07	00:10	0-0	0	0	0	0	0	0.0000
3- Schommer J/ 4- Wieker E/ 11- Koch C/ 15- Olson W/ 21- Swanson S/	2	00:07	OT1	00:00	05:07	17-15	2	2	1	0	0	1.7857



Officials:

Bethel (MN)

Lineup	Time	Score	Score Diff	Pts/Min	Reb	Stl	Tov	Ass	PPP
0- Thomsen P/ 1- Hoffman J/ 2- Kidder J/ 12- Nelson S/ 24- Doely Z/	11:34	30-20	10	2.5937	13	2	4	6	1.4677
0- Thomsen P/ 2- Kidder J/ 4- Zilmer S/ 21- Jensen T/ 24- Doely Z/	10:25	22-27	-5	2.1120	7	0	3	4	1.1879
0- Thomsen P/ 2- Kidder J/ 4- Zilmer S/ 5- Boettcher C/ 21- Jensen T/	03:46	3-6	-3	0.7965	2	0	1	0	0.4658
1- Hoffman J/ 2- Kidder J/ 4- Zilmer S/ 22- Whalen S/ 24- Doely Z/	02:59	9-9	0	3.0168	0	0	0	1	1.9397
4- Zilmer S/ 12- Nelson S/ 21- Jensen T/ 22- Whalen S/ 24- Doely Z/	02:25	5-8	-3	2.0690	1	0	0	2	1.2500
2- Kidder J/ 4- Zilmer S/ 5- Boettcher C/ 21- Jensen T/ 22- Whalen S/	02:19	3-3	0	1.2950	3	0	1	1	0.5515
0- Thomsen P/ 1- Hoffman J/ 2- Kidder J/ 22- Whalen S/ 24- Doely Z/	02:08	2-4	-2	0.9375	0	1	1	0	0.5000
2- Kidder J/ 4- Zilmer S/ 5- Boettcher C/ 22- Whalen S/ 24- Doely Z/	02:07	4-6	-2	1.8898	1	0	1	1	1.0309
0- Thomsen P/ 4- Zilmer S/ 5- Boettcher C/ 21- Jensen T/ 24- Doely Z/	01:59	6-2	4	3.0252	3	0	0	0	1.5464
0- Thomsen P/ 1- Hoffman J/ 2- Kidder J/ 21- Jensen T/ 24- Doely Z/	01:34	3-3	0	1.9149	1	0	2	0	0.9036
0- Thomsen P/ 5- Boettcher C/ 21- Jensen T/ 22- Whalen S/ 24- Doely Z/	01:15	0-5	-5	0.0000	0	0	2	0	0.0000
0- Thomsen P/ 1- Hoffman J/ 2- Kidder J/ 4- Zilmer S/ 24- Doely Z/	00:51	3-2	1	3.5294	0	1	0	0	1.0870
0- Thomsen P/ 2- Kidder J/ 21- Jensen T/ 22- Whalen S/ 24- Doely Z/	00:49	0-1	-1	0.0000	2	0	1	0	0.0000
0- Thomsen P/ 1- Hoffman J/ 4- Zilmer S/ 21- Jensen T/ 24- Doely Z/	00:49	2-0	2	2.4490	2	0	0	1	2.0000
1- Hoffman J/ 4- Zilmer S/ 12- Nelson S/ 22- Whalen S/ 24- Doely Z/	00:00	0-0	0	NaN	0	0	0	0	0.0000



Officials:

Gust. Adolphus

Lineup	Time	Score	Score Diff	Pts/Min	Reb	Stl	Tov	Ass	PPP
3- Schommer J/ 4- Wieker E/ 11- Koch C/ 15- Olson W/ 21- Swanson S/	12:59	33-27	6	2.5417	11	1	2	2	1.4732
3- Schommer J/ 4- Wieker E/ 21- Swanson S/ 22- Biewen A/ 32- Guse J/	09:38	16-30	-14	1.6609	4	3	2	4	0.8889
3- Schommer J/ 4- Wieker E/ 11- Koch C/ 22- Biewen A/ 32- Guse J/	03:40	13-6	7	3.5455	5	1	0	1	1.8895
3- Schommer J/ 11- Koch C/ 21- Swanson S/ 22- Biewen A/ 32- Guse J/	02:32	6-5	1	2.3684	1	0	0	1	1.5464
1- Kienitz B/ 11- Koch C/ 15- Olson W/ 21- Swanson S/ 22- Biewen A/	02:30	9-8	1	3.6000	2	0	0	1	2.2500
3- Schommer J/ 4- Wieker E/ 15- Olson W/ 21- Swanson S/ 22- Biewen A/	02:16	5-1	4	2.2059	0	0	1	0	1.0246
1- Kienitz B/ 2- Anderson C/ 15- Olson W/ 21- Swanson S/ 22- Biewen A/	02:15	4-1	3	1.7778	5	0	0	1	1.3333
3- Schommer J/ 4- Wieker E/ 11- Koch C/ 15- Olson W/ 22- Biewen A/	01:59	2-5	-3	1.0084	2	0	0	0	0.6667
1- Kienitz B/ 3- Schommer J/ 4- Wieker E/ 15- Olson W/ 21- Swanson S/	01:52	3-3	0	1.6071	4	0	0	0	1.0000
3- Schommer J/ 4- Wieker E/ 11- Koch C/ 21- Swanson S/ 32- Guse J/	01:40	0-1	-1	0.0000	4	1	0	0	0.0000
4- Wieker E/ 11- Koch C/ 15- Olson W/ 21- Swanson S/ 22- Biewen A/	01:22	2-3	-1	1.4634	0	0	0	0	1.0638
3- Schommer J/ 11- Koch C/ 15- Olson W/ 21- Swanson S/ 22- Biewen A/	01:14	2-1	1	1.6216	0	0	0	0	1.0000
1- Kienitz B/ 2- Anderson C/ 4- Wieker E/ 15- Olson W/ 22- Biewen A/	00:52	0-0	0	0.0000	1	1	1	0	0.0000
1- Kienitz B/ 4- Wieker E/ 15- Olson W/ 21- Swanson S/ 22- Biewen A/	00:11	0-1	-1	0.0000	0	0	1	0	0.0000
1- Kienitz B/ 2- Anderson C/ 4- Wieker E/ 22- Biewen A/ 32- Guse J/	00:00	1-0	1	∞	0	0	0	0	2.2727