



Officials: Kelly Anlauf, Bryan Anslinger, Duncan Faris

Gust. Adolphus - 97

Record: 5-7 (5-2)

NO.	Name	F	Min	FG			3P			FT			Rebounds			Fouls		TP	AS	TO	ST	Blocks		+/-
				M-A	M-A	M-A	OR	DR	TOT	PF	FD	BS	BA											
4	Evan Wieker	F	33:04	6-9	2-3	3-4	0	6	6	2	4	17	4	3	0	0	0	0	0	0	0	3		
21	Spencer Swanson	F	37:22	12-21	1-3	8-8	2	5	7	2	6	33	1	1	0	0	0	1	0	0	1	15		
22	Adam Biewen	F	36:15	3-9	0-2	0-2	1	5	6	2	2	6	1	0	0	0	0	1	0	0	1	10		
32	Jake Guse	C	21:35	1-2	0-0	1-2	0	3	3	4	2	3	0	0	1	1	0	0	0	0	0	-4		
3	Jordan Schommer	G	22:02	5-8	1-4	0-0	0	1	1	4	0	11	3	2	1	0	0	0	0	0	0	-6		
1	Brady Kienitz		20:13	4-6	4-6	1-3	0	3	3	0	2	13	4	0	2	1	0	0	0	0	10			
2	Cam Anderson		08:26	2-3	1-1	0-0	1	1	2	0	0	5	0	1	0	0	0	0	0	0	10			
15	Wyatt Olson		16:32	4-4	1-1	0-1	2	2	4	3	1	9	6	4	0	1	0	0	0	0	17			
11	Carson Koch		04:31	0-1	0-0	0-0	0	0	0	0	0	0	0	0	0	0	0	0	0	0	0	-10		
Team							0	0	0			0					0							
Totals				37-63	10-20	13-20	6	26	32	17	17	97	19	11	4	3	2	9						

Shooting By Period		
1 st FG%	21-33	63.6%
3PT%	6-12	50.0%
FT%	2-3	66.7%
2 nd FG%	16-30	53.3%
3PT%	4-8	50.0%
FT%	11-17	64.7%
GM FG%	37-63	58.7%
3PT%	10-20	50.0%
FT%	13-20	65.0%

Dead Ball Rebounds: 2, 0

Technical Fouls::NONE

Bethel (MN) - 88

Record: 3-9 (1-6)

NO.	Name	F	Min	FG			3P			FT			Rebounds			Fouls		TP	AS	TO	ST	Blocks		+/-
				M-A	M-A	M-A	OR	DR	TOT	PF	FD	BS	BA											
2	Joey Kidder	F	30:27	3-7	1-3	8-9	0	4	4	4	6	15	6	2	1	0	0	0	0	0	0	-3		
3	Avery Mast	F	31:45	4-9	2-6	0-0	1	3	4	3	0	10	1	1	0	1	0	0	0	0	0	-3		
24	Zach Doely	F	31:22	14-18	0-0	4-5	2	11	13	1	4	32	1	2	1	0	0	0	0	0	0			
0	Payton Thomsen	G	31:21	5-10	1-5	6-7	0	1	1	1	4	17	3	2	0	0	1	0	0	0	0	-9		
21	Tommy Jensen	G	18:45	4-9	3-5	0-1	0	1	1	3	1	11	0	1	1	0	1	0	1	0	1	3		
1	Josh Hoffman		13:34	0-1	0-0	1-2	0	0	0	1	1	1	0	0	0	0	0	0	0	0	1	-16		
5	Caden Boettcher		13:53	0-2	0-1	0-0	1	1	2	0	0	0	1	0	1	1	0	0	0	0	0	-8		
12	Sam Nelson		18:48	0-3	0-1	0-0	0	1	1	1	1	0	4	1	0	0	0	0	0	0	0	-8		
22	Solomon Whalen		10:05	1-1	0-0	0-0	0	1	1	3	0	2	0	0	1	0	0	0	0	0	0	-1		
Team							0	0	0			0					1							
Totals				31-60	7-21	19-24	4	23	27	17	17	88	16	10	5	2	3	-9						

Shooting By Period		
1 st FG%	15-31	48.4%
3PT%	1-9	11.1%
FT%	9-11	81.8%
2 nd FG%	16-29	55.2%
3PT%	6-12	50.0%
FT%	10-13	76.9%
GM FG%	31-60	51.7%
3PT%	7-21	33.3%
FT%	19-24	79.2%

Dead Ball Rebounds: 4, 2

Technical Fouls::NONE

	GAC	BU
Biggest lead	12 (1 st 1:16)	2 (1 st 19:49)
Best Scoring Run	9(2 nd 1:40)	7(1 st 14:35)
Lead Changes	5	
Times Tied	4	
Time with Lead	36:31	01:39

	GAC	BU
Points from		
Turnovers	7	13
Paint	48	48
Second Chance	7	7
Fast Breaks	14	4
Bench	27	3

	Period by Period Scoring		
	1st	2nd	TOT
GAC	50	47	97
BU	40	48	88



Period 1

Quarter Starters:

BU	0 Thomsen P	2 Kidder J	3 Mast A	21 Jensen T	24 Doely Z
GAC	3 Schommer J	4 Wieker E	21 Swanson S	22 Biewen A	32 Guse J

Game Time	BU	Score	Diff	GAC
20:00	24 DOELY Z jumpball won			32 GUSE J jumpball lost
19:49	24 DOELY Z 2pt FG in the paint, alleyoop made (2)	2-0	2	
19:49	0 THOMSEN P assist (1)			
19:33				32 GUSE J 2pt FG in the paint, layup missed
19:31	3 MAST A defensive rebound (1)			
19:10	24 DOELY Z 2pt FG in the paint, hook shot missed			
19:08				4 WIEKER E defensive rebound (1)
18:58				22 BIEWEN A 2pt FG in the paint, layup missed
18:56	2 KIDDER J defensive rebound (1)			
18:52	21 JENSEN T 3pt FG , jump shot missed			
18:48				22 BIEWEN A defensive rebound (1)
18:40		2-3	-1	21 SWANSON S 3pt FG , jump shot made (3)
18:40				3 SCHOMMER J assist (1)
18:24	2 KIDDER J foul drawn (1)			22 BIEWEN A foul shooting (1 - 1)
18:24	2 KIDDER J free throw 1 - 2 made (1)	3-3	0	
18:24	2 KIDDER J free throw 2 - 2 made (2)	4-3	1	
18:06		4-5	-1	4 WIEKER E 2pt FG in the paint, driving layup made (2)
17:48	24 DOELY Z 2pt FG in the paint, jump shot missed			
17:44				4 WIEKER E defensive rebound (2)
17:40	21 JENSEN T foul personal (1 - 1)			4 WIEKER E foul drawn (1)
17:27		4-7	-3	22 BIEWEN A 2pt FG in the paint, layup made (2)
17:27				4 WIEKER E assist (1)
17:17	2 KIDDER J 2pt FG in the paint, driving layup missed			
17:15				3 SCHOMMER J defensive rebound (1)
17:03				3 SCHOMMER J 3pt FG , jump shot missed
16:57	2 KIDDER J defensive rebound (2)			
16:31	3 MAST A 3pt FG , jump shot missed			
16:27				4 WIEKER E defensive rebound (3)
16:25		4-9	-5	21 SWANSON S 2pt FG fast break in the paint, layup made (5)
16:25				4 WIEKER E assist (2)
15:56	24 DOELY Z 2pt FG in the paint, floating jump shot made (4)	6-9	-3	
15:44	21 JENSEN T steal (1)			4 WIEKER E turnover bad pass (1)
15:40	2 KIDDER J turnover lost ball (1)			3 SCHOMMER J steal (1)
15:33	24 DOELY Z steal (1)			21 SWANSON S turnover bad pass (1)
15:19	3 MAST A 3pt FG from turnover, jump shot made (3)	9-9	0	
15:19	0 THOMSEN P assist (2)			
15:05				3 SCHOMMER J turnover bad pass (1)
15:05	2 KIDDER J substitution out			
15:05	3 MAST A substitution out			
15:05	21 JENSEN T substitution out			
15:05	1 HOFFMAN J substitution in			
15:05	5 BOETTCHER C substitution in			
15:05	12 NELSON S substitution in			



Gust. Adolphus at Bethel (MN)

01/04/23 Robertson Center, St. Paul
2022-23 Men's Basketball

Officials: Kelly Anlauf, Bryan Anslinger, Duncan Faris

Game Time	BU	Score	Diff	GAC
15:05				3 SCHOMMER J substitution out
15:05				22 BIEWEN A substitution out
15:05				32 GUSE J substitution out
15:05				1 KIENITZ B substitution in
15:05				2 ANDERSON C substitution in
15:05				15 OLSON W substitution in
14:43	0 THOMSEN P 3pt FG from turnover, jump shot missed			
14:37	5 BOETTCHER C offensive rebound (1)			
14:35	24 DOELY Z 2pt FG from turnover second chance in the paint, layup made (6)	11-9	2	
14:35	12 NELSON S assist (1)			
14:23	1 HOFFMAN J foul shooting (1 - 2)			4 WIEKER E foul drawn (2)
14:23		11-10	1	4 WIEKER E free throw 1 - 2 made (3)
14:23		11-11	0	4 WIEKER E free throw 2 - 2 made (4)
14:01	12 NELSON S 2pt FG in the paint, driving layup missed			
13:59				1 KIENITZ B defensive rebound (1)
13:47		11-13	-2	2 ANDERSON C 2pt FG in the paint, driving layup made (2)
13:34	0 THOMSEN P 2pt FG in the paint, driving layup made (2)	13-13	0	
13:15		13-15	-2	21 SWANSON S 2pt FG outside the paint, turnaround jump shot made (7)
13:01	0 THOMSEN P 3pt FG , jump shot missed			
12:59				21 SWANSON S defensive rebound (1)
12:56	12 NELSON S foul drawn (1)			15 OLSON W foul offensive (1 - 2)
12:56				15 OLSON W turnover offensive (1)
12:56	0 THOMSEN P substitution out			
12:56	24 DOELY Z substitution out			
12:56	2 KIDDER J substitution in			
12:56	3 MAST A substitution in			
12:51				4 WIEKER E substitution out
12:51				22 BIEWEN A substitution in
12:38	2 KIDDER J 2pt FG from turnover in the paint, driving layup missed			
12:35				15 OLSON W defensive rebound (1)
12:25				21 SWANSON S 3pt FG , jump shot missed
12:21				15 OLSON W offensive rebound (2)
12:17	5 BOETTCHER C steal (1)			15 OLSON W turnover bad pass (2)
12:13	5 BOETTCHER C 2pt FG from turnover in the paint, driving layup missed			
12:08	3 MAST A offensive rebound (2)			
12:08	3 MAST A 2pt FG from turnover second chance in the paint, layup missed			
12:07				22 BIEWEN A defensive rebound (2)
11:50		13-17	-4	15 OLSON W 2pt FG in the paint, step back jump shot made (2)
11:18	5 BOETTCHER C 3pt FG , jump shot missed			
11:17				15 OLSON W defensive rebound (3)
10:50		13-20	-7	1 KIENITZ B 3pt FG , jump shot made (3)
10:50				21 SWANSON S assist (1)
10:39	3 MAST A 3pt FG , jump shot missed			
10:37				22 BIEWEN A defensive rebound (3)
10:31				2 ANDERSON C 2pt FG in the paint, driving layup missed
10:28	defensive dead ball rebound (1)			



Game Time	BU	Score	Diff	GAC
10:28	1 HOFFMAN J substitution out			
10:28	5 BOETTCHER C substitution out			
10:28	22 WHALEN S substitution in			
10:28	24 DOELY Z substitution in			
10:28				2 ANDERSON C substitution out
10:28				15 OLSON W substitution out
10:28				21 SWANSON S substitution out
10:28				3 SCHOMMER J substitution in
10:28				11 KOCH C substitution in
10:28				32 GUSE J substitution in
10:16	3 MAST A turnover bad pass (1)			
10:04				22 BIEWEN A 3pt FG from turnover, jump shot missed
10:00	22 WHALEN S defensive rebound (1)			
09:42	12 NELSON S substitution out			
09:42	21 JENSEN T substitution in			
09:37	24 DOELY Z 2pt FG in the paint, driving layup made (8)	15-20	-5	
09:25				1 KIENITZ B 3pt FG , jump shot missed
09:23	24 DOELY Z defensive rebound (1)			
09:01	22 WHALEN S 2pt FG in the paint, layup made (2)	17-20	-3	
09:01	24 DOELY Z assist (1)			
08:43				22 BIEWEN A 2pt FG in the paint, hook shot missed
08:41	24 DOELY Z defensive rebound (2)			
08:28	21 JENSEN T turnover bad pass (1)			
08:28				4 WIEKER E substitution in
08:28				1 KIENITZ B substitution out
08:08				11 KOCH C 2pt FG from turnover outside the paint, jump shot missed
08:06	21 JENSEN T defensive rebound (1)			
07:54	24 DOELY Z 2pt FG in the paint, layup made (10)	19-20	-1	
07:50	Timeout 60 Sec			
07:50				11 KOCH C substitution out
07:50				21 SWANSON S substitution in
07:50	21 JENSEN T substitution out			
07:50	0 THOMSEN P substitution in			
07:33				4 WIEKER E 2pt FG in the paint, layup missed
07:31	24 DOELY Z defensive rebound (3)			
07:14	2 KIDDER J 3pt FG , jump shot missed			
07:10				32 GUSE J defensive rebound (1)
06:59		19-22	-3	21 SWANSON S 2pt FG in the paint, layup made (9)
06:39	24 DOELY Z 2pt FG in the paint, layup made (12)	21-22	-1	
06:39	2 KIDDER J assist (1)			
06:23		21-24	-3	21 SWANSON S 2pt FG in the paint, layup made (11)
06:13	24 DOELY Z 2pt FG in the paint, layup made (14)	23-24	-1	
06:13	2 KIDDER J assist (2)			
05:59		23-26	-3	21 SWANSON S 2pt FG in the paint, hook shot made (13)
05:45	24 DOELY Z 2pt FG in the paint, layup made (16)	25-26	-1	
05:45	3 MAST A assist (1)			
05:44				Timeout 30 Sec
05:44	2 KIDDER J substitution out			



Gust. Adolphus at Bethel (MN)

01/04/23 Robertson Center, St. Paul
2022-23 Men's Basketball

Officials: Kelly Anlauf, Bryan Anslinger, Duncan Faris

Game Time	BU	Score	Diff	GAC
05:44	3 MAST A substitution out			
05:44	24 DOELY Z substitution out			
05:44	1 HOFFMAN J substitution in			
05:44	5 BOETTCHER C substitution in			
05:44	21 JENSEN T substitution in			
05:44				3 SCHOMMER J substitution out
05:44				32 GUSE J substitution out
05:44				1 KIENITZ B substitution in
05:44				15 OLSON W substitution in
05:34		25-28	-3	4 WIEKER E 2pt FG in the paint, layup made (6)
05:34				22 BIEWEN A assist (1)
05:25	0 THOMSEN P foul drawn (1)			15 OLSON W foul shooting (2 - 3)
05:25	0 THOMSEN P free throw 1 - 2 made (3)	26-28	-2	
05:25	21 JENSEN T substitution out			
05:25	12 NELSON S substitution in			
05:25	0 THOMSEN P free throw 2 - 2 made (4)	27-28	-1	
05:16		27-31	-4	4 WIEKER E 3pt FG , jump shot made (9)
05:16				1 KIENITZ B assist (1)
04:50	0 THOMSEN P 2pt FG in the paint, driving layup made (6)	29-31	-2	
04:28		29-34	-5	1 KIENITZ B 3pt FG , jump shot made (6)
04:28				15 OLSON W assist (1)
03:59	12 NELSON S 2pt FG in the paint, layup missed			
03:56				1 KIENITZ B defensive rebound (2)
03:54		29-37	-8	4 WIEKER E 3pt FG fast break, jump shot made (12)
03:54				1 KIENITZ B assist (2)
03:35	1 HOFFMAN J foul drawn (1)			15 OLSON W foul shooting (3 - 4)
03:35	1 HOFFMAN J free throw 1 - 2 made (1)	30-37	-7	
03:35	5 BOETTCHER C substitution out			
03:35	22 WHALEN S substitution out			
03:35	2 KIDDER J substitution in			
03:35	24 DOELY Z substitution in			
03:35				1 KIENITZ B substitution out
03:35				15 OLSON W substitution out
03:35				3 SCHOMMER J substitution in
03:35				32 GUSE J substitution in
03:35	1 HOFFMAN J free throw 2 - 2 missed			
03:35				22 BIEWEN A defensive rebound (4)
03:26		30-39	-9	3 SCHOMMER J 2pt FG outside the paint, jump shot made (2)
03:07	24 DOELY Z 2pt FG in the paint, layup made (18)	32-39	-7	
03:01	0 THOMSEN P substitution out			
03:01	21 JENSEN T substitution in			
02:59		32-41	-9	4 WIEKER E 2pt FG outside the paint, floating jump shot made (14)
02:53	21 JENSEN T foul shooting (2 - 3)			4 WIEKER E foul drawn (3)
02:53				4 WIEKER E free throw 1 - 1 missed
02:52	24 DOELY Z defensive rebound (4)			
02:44	2 KIDDER J foul drawn (2)			32 GUSE J foul shooting (1 - 5)
02:44	2 KIDDER J free throw 1 - 2 made (3)	33-41	-8	
02:44	21 JENSEN T substitution out			



Gust. Adolphus at Bethel (MN)

01/04/23 Robertson Center, St. Paul
2022-23 Men's Basketball

Game Time: 7:00 PM

Game Duration: 1:41

Attendance: 246

Officials: Kelly Anlauf, Bryan Anslinger, Duncan Faris

Game Time	BU	Score	Diff	GAC
02:44	3 MAST A substitution in			
02:44	2 KIDDER J free throw 2 - 2 made (4)	34-41	-7	
02:35		34-43	-9	3 SCHOMMER J 2pt FG in the paint, jump shot made (4)
02:10	3 MAST A 2pt FG in the paint, layup made (5)	36-43	-7	
02:10	12 NELSON S assist (2)			
02:03		36-45	-9	22 BIEWEN A 2pt FG fast break in the paint, layup made (4)
02:03				3 SCHOMMER J assist (2)
02:02	Timeout 30 Sec			
01:54	2 KIDDER J foul drawn (3)			4 WIEKER E foul shooting (1 - 6)
01:54	2 KIDDER J free throw 1 - 2 made (5)	37-45	-8	
01:54	2 KIDDER J free throw 2 - 2 made (6)	38-45	-7	
01:54	12 NELSON S substitution out			
01:54	0 THOMSEN P substitution in			
01:45		38-47	-9	3 SCHOMMER J 2pt FG in the paint, driving layup made (6)
01:28	2 KIDDER J 3pt FG , jump shot missed			
01:24				4 WIEKER E defensive rebound (4)
01:16		38-50	-12	3 SCHOMMER J 3pt FG , step back jump shot made (9)
00:50	0 THOMSEN P 2pt FG in the paint, driving layup made (8)	40-50	-10	
00:39				3 SCHOMMER J 3pt FG , step back jump shot missed
00:35	2 KIDDER J defensive rebound (3)			
00:31	2 KIDDER J foul drawn (4)			3 SCHOMMER J foul personal (1 - 7)
00:31	2 KIDDER J 1&1 free throw 1 missed			
00:31				21 SWANSON S defensive rebound (2)
00:06	3 MAST A foul personal (1 - 4)			21 SWANSON S foul drawn (1)
00:06	0 THOMSEN P substitution out			
00:06	22 WHALEN S substitution in			
00:04	2 KIDDER J foul personal (1 - 5)			21 SWANSON S foul drawn (2)
00:00				3 SCHOMMER J 3pt FG , step back jump shot missed
00:00	defensive dead ball rebound (2)			
END OF PERIOD				
BU 40-50 GAC				



Officials: Kelly Anlauf, Bryan Anslinger, Duncan Faris

Gust. Adolphus - 50

NO.	Name	F	Min	FG			Rebounds			Fouls		TP	AS	TO	ST	Blocks		+/-
				M-A	M-A	M-A	OR	DR	TOT	PF	FD					BS	BA	
4	Evan Wieker	F	15:37	5-6	2-2	2-3	0	4	4	1	3	14	2	1	0	0	0	9
21	Spencer Swanson	F	17:22	6-7	1-2	0-0	0	2	2	0	2	13	1	1	0	0	0	16
22	Adam Biewen	F	17:46	2-5	0-1	0-0	0	4	4	1	0	4	1	0	0	0	0	8
32	Jake Guse	C	13:14	0-1	0-0	0-0	0	1	1	1	0	0	0	0	0	0	0	-3
3	Jordan Schommer	G	13:14	4-7	1-4	0-0	0	1	1	1	0	9	2	1	1	0	0	-3
1	Brady Kienitz		08:46	2-3	2-3	0-0	0	2	2	0	0	6	2	0	0	0	0	9
2	Cam Anderson		04:37	1-2	0-0	0-0	0	0	0	0	0	2	0	0	0	0	0	7
15	Wyatt Olson		06:46	1-1	0-0	0-0	1	2	3	3	0	2	1	2	0	0	0	13
11	Carson Koch		02:38	0-1	0-0	0-0	0	0	0	0	0	0	0	0	0	0	0	-6
Team							0	0	0			0		0				
Totals				21-33	6-12	2-3	1	16	17	7	5	50	9	5	1	0	0	10

Shooting By Period		
1st FG%	21-33	63.6%
3PT%	6-12	50.0%
FT%	2-3	66.7%
GM FG%	21-33	63.6%
3PT%	6-12	50.0%
FT%	2-3	66.7%

Dead Ball Rebounds: 0, 0

Technical Fouls::NONE

Bethel (MN) - 40

NO.	Name	F	Min	FG			Rebounds			Fouls		TP	AS	TO	ST	Blocks		+/-
				M-A	M-A	M-A	OR	DR	TOT	PF	FD					BS	BA	
2	Joey Kidder	F	15:42	0-4	0-2	6-7	0	3	3	1	4	6	2	1	0	0	0	-2
3	Avery Mast	F	14:51	2-5	1-3	0-0	1	1	2	1	0	5	1	1	0	0	0	-1
24	Zach Doely	F	15:23	9-11	0-0	0-0	0	4	4	0	0	18	1	0	1	0	0	1
0	Payton Thomsen	G	13:41	3-5	0-2	2-2	0	0	0	0	1	8	2	0	0	0	0	-11
21	Tommy Jensen	G	07:23	0-1	0-1	0-0	0	1	1	2	0	0	0	1	1	0	0	4
1	Josh Hoffman		10:21	0-0	0-0	1-2	0	0	0	1	1	1	0	0	0	0	0	-16
5	Caden Boettcher		06:46	0-2	0-1	0-0	1	0	1	0	0	0	0	0	1	0	0	-13
12	Sam Nelson		08:54	0-2	0-0	0-0	0	0	0	0	1	0	2	0	0	0	0	-12
22	Solomon Whalen		06:59	1-1	0-0	0-0	0	1	1	0	0	2	0	0	0	0	0	0
Team							0	0	0			0		0				
Totals				15-31	1-9	9-11	2	10	12	5	7	40	8	3	3	0	0	-10

Shooting By Period		
1st FG%	15-31	48.4%
3PT%	1-9	11.1%
FT%	9-11	81.8%
GM FG%	15-31	48.4%
3PT%	1-9	11.1%
FT%	9-11	81.8%

Dead Ball Rebounds: 0, 2

Technical Fouls::NONE

	GAC	BU
Biggest lead	12 (1 st 1:16)	2 (1 st 19:49)
Best Scoring Run	7 (1 st 10:50)	7 (1 st 14:35)
Lead Changes	5	
Times Tied	4	
Time with Lead	16:31	01:39

	GAC	BU
Points from		
Turnovers	0	5
Paint	24	28
Second Chance	0	2
Fast Breaks	7	0
Bench	10	3

	Period by Period Scoring		
	1st	2nd	TOT
GAC	50	47	97
BU	40	48	88



Gust. Adolphus at Bethel (MN)

01/04/23 Robertson Center, St. Paul
2022-23 Men's Basketball

Officials: Kelly Anlauf, Bryan Anslinger, Duncan Faris

Period 2

Quarter Starters:

BU	0 Thomsen P	2 Kidder J	3 Mast A	21 Jensen T	24 Doely Z
GAC	3 Schommer J	4 Wieker E	21 Swanson S	22 Biewen A	32 Guse J

Game Time	BU	Score	Diff	GAC
20:00	1 HOFFMAN J substitution out			
20:00	22 WHALEN S substitution out			
20:00	0 THOMSEN P substitution in			
20:00	21 JENSEN T substitution in			
19:43				21 SWANSON S 2pt FG outside the paint, turnaround jump shot missed
19:41	24 DOELY Z defensive rebound (5)			
19:32	24 DOELY Z 2pt FG in the paint, layup made (20)	42-50	-8	
19:21				22 BIEWEN A 2pt FG in the paint, layup missed
19:19	24 DOELY Z defensive rebound (6)			
19:02	0 THOMSEN P 3pt FG , jump shot missed			
18:58				32 GUSE J defensive rebound (2)
18:38		42-52	-10	21 SWANSON S 2pt FG in the paint, hook shot made (15)
18:27	2 KIDDER J foul drawn (5)			4 WIEKER E foul shooting (2 - 1)
18:27	2 KIDDER J free throw 1 - 2 made (7)	43-52	-9	
18:27	2 KIDDER J free throw 2 - 2 made (8)	44-52	-8	
18:19	2 KIDDER J steal (1)			3 SCHOMMER J turnover lost ball (2)
18:13	24 DOELY Z 2pt FG fast break from turnover in the paint, dunk, made (22)	46-52	-6	
18:13	2 KIDDER J assist (3)			
18:06				21 SWANSON S 2pt FG in the paint, layup missed
18:02				21 SWANSON S offensive rebound (3)
18:02		46-54	-8	21 SWANSON S 2pt FG second chance in the paint, layup made (17)
17:59	2 KIDDER J foul drawn (6)			3 SCHOMMER J foul personal (2 - 2)
17:47	21 JENSEN T 2pt FG in the paint, driving layup missed			
17:45				32 GUSE J defensive rebound (3)
17:35				4 WIEKER E turnover bad pass (2)
17:21	21 JENSEN T 3pt FG from turnover, jump shot made (3)	49-54	-5	
17:21	2 KIDDER J assist (4)			
17:05				21 SWANSON S 3pt FG , jump shot missed
17:02	24 DOELY Z defensive rebound (7)			
16:48	24 DOELY Z turnover lost ball (1)			32 GUSE J steal (1)
16:41	2 KIDDER J foul personal (2 - 1)			32 GUSE J foul drawn (1)
16:32	2 KIDDER J foul shooting (3 - 2)			32 GUSE J foul drawn (2)
16:32		49-55	-6	32 GUSE J free throw 1 - 2 made (1)
16:32				32 GUSE J free throw 2 - 2 missed
16:32	0 THOMSEN P defensive rebound (1)			
16:30	2 KIDDER J substitution out			
16:30	12 NELSON S substitution in			
16:15	0 THOMSEN P 2pt FG in the paint, driving layup made (10)	51-55	-4	
16:15	0 THOMSEN P foul drawn (2)			3 SCHOMMER J foul shooting (3 - 3)
16:15	0 THOMSEN P free throw 1 - 1 made (11)	52-55	-3	
16:15				3 SCHOMMER J substitution out



Gust. Adolphus at Bethel (MN)

01/04/23 Robertson Center, St. Paul
2022-23 Men's Basketball

Officials: Kelly Anlauf, Bryan Anslinger, Duncan Faris

Game Time	BU	Score	Diff	GAC
16:15				1 KIENITZ B substitution in
15:58		52-57	-5	21 SWANSON S 2pt FG in the paint, hook shot made (19)
15:40	24 DOELY Z foul drawn (1)			32 GUSE J foul personal (2 - 4)
15:33	0 THOMSEN P 2pt FG in the paint, layup blocked			
15:33				32 GUSE J block (1)
15:32	offensive dead ball rebound (3)			
15:18	24 DOELY Z 2pt FG second chance outside the paint, jump shot missed			
15:18	offensive dead ball rebound (4)			
15:18	turnover shot clock (5)			
15:18	3 MAST A substitution out			
15:18	5 BOETTCHER C substitution in			
15:18				32 GUSE J substitution out
15:18				15 OLSON W substitution in
15:04				4 WIEKER E turnover out of bounds (3)
14:45	24 DOELY Z 2pt FG from turnover in the paint, layup missed			
14:44	24 DOELY Z offensive rebound (8)			
14:44	24 DOELY Z 2pt FG from turnover second chance in the paint, layup made (24)	54-57	-3	
14:44	24 DOELY Z foul drawn (2)			22 BIEWEN A foul shooting (2 - 5)
14:44	0 THOMSEN P substitution out			
14:44	1 HOFFMAN J substitution in			
14:44	24 DOELY Z free throw 1 - 1 made (25)	55-57	-2	
14:35		55-59	-4	21 SWANSON S 2pt FG in the paint, layup made (21)
14:35				1 KIENITZ B assist (3)
14:23	21 JENSEN T 3pt FG , jump shot made (6)	58-59	-1	
14:02		58-61	-3	15 OLSON W 2pt FG in the paint, layup made (4)
14:02				4 WIEKER E assist (3)
14:02	24 DOELY Z foul shooting (1 - 3)			15 OLSON W foul drawn (1)
14:02				22 BIEWEN A substitution out
14:02				2 ANDERSON C substitution in
14:02				15 OLSON W free throw 1 - 1 missed
14:00	12 NELSON S defensive rebound (1)			
13:34	21 JENSEN T 2pt FG in the paint, layup blocked			
13:34				15 OLSON W block (1)
13:29	24 DOELY Z offensive rebound (9)			
13:28	24 DOELY Z 2pt FG second chance in the paint, layup made (27)	60-61	-1	
13:23	21 JENSEN T substitution out			
13:23	24 DOELY Z substitution out			
13:23	0 THOMSEN P substitution in			
13:23	3 MAST A substitution in			
13:21				21 SWANSON S 2pt FG outside the paint, jump shot blocked
13:21	3 MAST A block (1)			
13:17				21 SWANSON S offensive rebound (4)
13:13		60-63	-3	15 OLSON W 2pt FG second chance in the paint, layup made (6)
13:04	3 MAST A 2pt FG in the paint, layup made (7)	62-63	-1	
13:04	12 NELSON S assist (3)			
12:46				15 OLSON W turnover travel (3)



Gust. Adolphus at Bethel (MN)

01/04/23 Robertson Center, St. Paul
2022-23 Men's Basketball

Officials: Kelly Anlauf, Bryan Anslinger, Duncan Faris

Game Time	BU	Score	Diff	GAC
12:46				4 WIEKER E substitution out
12:46				22 BIEWEN A substitution in
12:25	12 NELSON S turnover travel (1)			
12:09		62-65	-3	21 SWANSON S 2pt FG from turnover in the paint, layup made (23)
12:09				15 OLSON W assist (2)
11:48	1 HOFFMAN J 2pt FG in the paint, layup blocked			
11:48				1 KIENITZ B block (1)
11:44				2 ANDERSON C defensive rebound (1)
11:41				22 BIEWEN A 3pt FG , jump shot missed
11:37				2 ANDERSON C offensive rebound (2)
11:31	1 HOFFMAN J substitution out			
11:31	5 BOETTCHER C substitution out			
11:31	12 NELSON S substitution out			
11:31	2 KIDDER J substitution in			
11:31	22 WHALEN S substitution in			
11:31	24 DOELY Z substitution in			
11:31				1 KIENITZ B substitution out
11:31				3 SCHOMMER J substitution in
11:23				15 OLSON W turnover bad pass (4)
11:02	2 KIDDER J turnover bad pass (2)			
10:44	22 WHALEN S steal (1)			2 ANDERSON C turnover lost ball (1)
10:35	0 THOMSEN P 3pt FG from turnover, jump shot missed			
10:32				22 BIEWEN A defensive rebound (5)
10:17		62-68	-6	2 ANDERSON C 3pt FG , jump shot made (5)
10:17				15 OLSON W assist (3)
10:13				Timeout 60 Sec
10:13				2 ANDERSON C substitution out
10:13				4 WIEKER E substitution in
10:04	24 DOELY Z 2pt FG in the paint, alleyoop made (29)	64-68	-4	
10:04	2 KIDDER J assist (5)			
09:44				21 SWANSON S 2pt FG in the paint, step back jump shot missed
09:40	24 DOELY Z defensive rebound (10)			
09:36	2 KIDDER J 2pt FG fast break in the paint, layup made (10)	66-68	-2	
09:28		66-71	-5	15 OLSON W 3pt FG fast break, jump shot made (9)
09:28				3 SCHOMMER J assist (3)
09:09	3 MAST A 3pt FG , jump shot missed			
09:07				4 WIEKER E defensive rebound (5)
08:52	22 WHALEN S foul personal (1 - 4)			22 BIEWEN A foul drawn (1)
08:52	22 WHALEN S substitution out			
08:52	21 JENSEN T substitution in			
08:52				15 OLSON W substitution out
08:52				32 GUSE J substitution in
08:34				21 SWANSON S 2pt FG in the paint, hook shot missed
08:32	24 DOELY Z defensive rebound (11)			
08:25	0 THOMSEN P turnover bad pass (1)			
08:09		66-73	-7	3 SCHOMMER J 2pt FG from turnover in the paint, hook shot made (11)
07:55	24 DOELY Z foul drawn (3)			32 GUSE J foul shooting (3 - 6)



Gust. Adolphus at Bethel (MN)

01/04/23 Robertson Center, St. Paul
2022-23 Men's Basketball

Game Time: 7:00 PM
Game Duration: 1:41
Attendance: 246

Officials: Kelly Anlauf, Bryan Anslinger, Duncan Faris

Game Time	BU	Score	Diff	GAC
07:54	24 DOELY Z free throw 1 - 2 missed			
07:54	offensive dead ball rebound (5)			
07:54	3 MAST A substitution out			
07:54	5 BOETTCHER C substitution in			
07:54	24 DOELY Z free throw 2 - 2 made (30)	67-73	-6	
07:37		67-75	-8	32 GUSE J 2pt FG in the paint, layup made (3)
07:37				4 WIEKER E assist (4)
07:25	21 JENSEN T 3pt FG , jump shot missed			
07:22				21 SWANSON S defensive rebound (5)
07:19				22 BIEWEN A 2pt FG in the paint, layup blocked
07:19	5 BOETTCHER C block (1)			
07:15	24 DOELY Z defensive rebound (12)			
07:09	21 JENSEN T 2pt FG in the paint, floating jump shot missed			
07:05				21 SWANSON S defensive rebound (6)
07:02				4 WIEKER E 3pt FG , jump shot missed
06:58				22 BIEWEN A offensive rebound (6)
06:50				21 SWANSON S 2pt FG second chance in the paint, hook shot missed
06:48	5 BOETTCHER C defensive rebound (2)			
06:43	0 THOMSEN P foul drawn (3)			3 SCHOMMER J foul personal (4 - 7)
06:43	2 KIDDER J substitution out			
06:43	24 DOELY Z substitution out			
06:43	3 MAST A substitution in			
06:43	12 NELSON S substitution in			
06:43				3 SCHOMMER J substitution out
06:43				1 KIENITZ B substitution in
06:43	0 THOMSEN P 1&1 free throw 1 made (12)	68-75	-7	
06:43	0 THOMSEN P 1&1 free throw 2 made (13)	69-75	-6	
06:43	Timeout 60 Sec			
06:27		69-77	-8	4 WIEKER E 2pt FG in the paint, layup made (16)
06:27				1 KIENITZ B assist (4)
06:27	21 JENSEN T foul shooting (3 - 5)			4 WIEKER E foul drawn (4)
06:27				32 GUSE J substitution out
06:27				11 KOCH C substitution in
06:27		69-78	-9	4 WIEKER E free throw 1 - 1 made (17)
06:27	21 JENSEN T substitution out			
06:27	2 KIDDER J substitution in			
06:08	2 KIDDER J 2pt FG in the paint, layup made (12)	71-78	-7	
06:08	5 BOETTCHER C assist (1)			
05:48				21 SWANSON S 2pt FG outside the paint, turnaround jump shot missed
05:44	3 MAST A defensive rebound (3)			
05:20	3 MAST A 3pt FG , jump shot missed			
05:18				1 KIENITZ B defensive rebound (3)
04:57				1 KIENITZ B 3pt FG , jump shot missed
04:53	3 MAST A defensive rebound (4)			
04:42	0 THOMSEN P 3pt FG , jump shot made (16)	74-78	-4	
04:42	12 NELSON S assist (4)			
04:34	3 MAST A foul shooting (2 - 6)			22 BIEWEN A foul drawn (2)
04:34				22 BIEWEN A free throw 1 - 2 missed



Gust. Adolphus at Bethel (MN)

01/04/23 Robertson Center, St. Paul
2022-23 Men's Basketball

Officials: Kelly Anlauf, Bryan Anslinger, Duncan Faris

Game Time	BU	Score	Diff	GAC
04:34				offensive dead ball rebound (1)
04:34	5 BOETTCHER C substitution out			
04:34	24 DOELY Z substitution in			
04:34				11 KOCH C substitution out
04:34				32 GUSE J substitution in
04:34				22 BIEWEN A free throw 2 - 2 missed
04:34	24 DOELY Z defensive rebound (13)			
04:19	24 DOELY Z foul drawn (4)			32 GUSE J foul shooting (4 - 8)
04:19	24 DOELY Z free throw 1 - 2 made (31)	75-78	-3	
04:19				32 GUSE J substitution out
04:19				15 OLSON W substitution in
04:19	24 DOELY Z free throw 2 - 2 made (32)	76-78	-2	
04:08				4 WIEKER E 2pt FG in the paint, layup missed
04:06				15 OLSON W offensive rebound (4)
04:03		76-81	-5	1 KIENITZ B 3pt FG second chance, jump shot made (9)
04:03				15 OLSON W assist (4)
03:52	2 KIDDER J 3pt FG , pull up jump shot made (15)	79-81	-2	
03:27		79-83	-4	22 BIEWEN A 2pt FG in the paint, layup made (6)
03:12	12 NELSON S 3pt FG , jump shot missed			
03:08				21 SWANSON S defensive rebound (7)
02:47	2 KIDDER J foul personal (4 - 7)			21 SWANSON S foul drawn (3)
02:47	12 NELSON S substitution out			
02:47	21 JENSEN T substitution in			
02:47		79-84	-5	21 SWANSON S 1&1 free throw 1 made (24)
02:47		79-85	-6	21 SWANSON S 1&1 free throw 2 made (25)
02:47				Timeout 60 Sec
02:29	21 JENSEN T foul drawn (1)			21 SWANSON S foul personal (1 - 9)
02:29	0 THOMSEN P substitution out			
02:29	12 NELSON S substitution in			
02:29	21 JENSEN T 1&1 free throw 1 missed			
02:29				4 WIEKER E defensive rebound (6)
02:05		79-88	-9	1 KIENITZ B 3pt FG , jump shot made (12)
02:05				15 OLSON W assist (5)
01:57	Timeout 60 Sec			
01:57	12 NELSON S substitution out			
01:57	0 THOMSEN P substitution in			
01:46	24 DOELY Z turnover bad pass (2)			1 KIENITZ B steal (1)
01:40		79-90	-11	21 SWANSON S 2pt FG fast break from turnover in the paint, layup made (27)
01:40				15 OLSON W assist (6)
01:29	21 JENSEN T 3pt FG , jump shot made (9)	82-90	-8	
01:29	2 KIDDER J assist (6)			
01:26	Timeout 30 Sec			
01:26	0 THOMSEN P substitution out			
01:26	21 JENSEN T substitution out			
01:26	12 NELSON S substitution in			
01:26	22 WHALEN S substitution in			
01:14	22 WHALEN S foul personal (2 - 8)			1 KIENITZ B foul drawn (1)
01:14	12 NELSON S substitution out			



Gust. Adolphus at Bethel (MN)

01/04/23 Robertson Center, St. Paul
2022-23 Men's Basketball

Game Time: 7:00 PM
Game Duration: 1:41
Attendance: 246

Officials: Kelly Anlauf, Bryan Anslinger, Duncan Faris

Game Time	BU	Score	Diff	GAC
01:14	22 WHALEN S substitution out			
01:14	0 THOMSEN P substitution in			
01:14	21 JENSEN T substitution in			
01:14				15 OLSON W substitution out
01:14				32 GUSE J substitution in
01:14				1 KIENITZ B 1&1 free throw 1 missed
01:13	2 KIDDER J defensive rebound (4)			
01:03	0 THOMSEN P foul drawn (4)			21 SWANSON S foul personal (2 - 10)
01:03	0 THOMSEN P free throw 1 - 2 missed			
01:03	offensive dead ball rebound (6)			
01:03	21 JENSEN T substitution out			
01:03	22 WHALEN S substitution in			
01:03				22 BIEWEN A substitution out
01:03				32 GUSE J substitution out
01:03				3 SCHOMMER J substitution in
01:03				15 OLSON W substitution in
01:03	0 THOMSEN P free throw 2 - 2 made (17)	83-90	-7	
01:03	0 THOMSEN P substitution out			
01:03	12 NELSON S substitution in			
00:57				Timeout 30 Sec
00:53	22 WHALEN S foul flagrant 1 (3 - 9)			1 KIENITZ B foul drawn (2)
00:53		83-91	-8	1 KIENITZ B free throw 1 - 2 made (13)
00:53				1 KIENITZ B free throw 2 - 2 missed
00:53				offensive dead ball rebound (2)
00:53				Timeout 60 Sec
00:48	3 MAST A foul personal (3 - 10)			21 SWANSON S foul drawn (4)
00:48		83-92	-9	21 SWANSON S free throw 1 - 2 made (28)
00:39	3 MAST A 3pt FG , jump shot made (10)	86-92	-6	
00:39	0 THOMSEN P assist (3)			
00:48	12 NELSON S substitution out			
00:48	22 WHALEN S substitution out			
00:48	0 THOMSEN P substitution in			
00:48	21 JENSEN T substitution in			
00:48				3 SCHOMMER J substitution out
00:48				15 OLSON W substitution out
00:48				22 BIEWEN A substitution in
00:48				32 GUSE J substitution in
00:48		86-93	-7	21 SWANSON S free throw 2 - 2 made (29)
00:39	Timeout 60 Sec			
00:39	0 THOMSEN P substitution out			
00:39	21 JENSEN T substitution out			
00:39	12 NELSON S substitution in			
00:39	22 WHALEN S substitution in			
00:39				22 BIEWEN A substitution out
00:39				32 GUSE J substitution out
00:39				3 SCHOMMER J substitution in
00:39				15 OLSON W substitution in
00:38	12 NELSON S foul personal (1 - 11)			21 SWANSON S foul drawn (5)
00:38		86-94	-8	21 SWANSON S free throw fast break 1 - 2 made (30)



Gust. Adolphus at Bethel (MN)

01/04/23 Robertson Center, St. Paul
2022-23 Men's Basketball

Game Time: 7:00 PM
Game Duration: 1:41
Attendance: 246

Officials: Kelly Anlauf, Bryan Anslinger, Duncan Faris

Game Time	BU	Score	Diff	GAC
00:38	12 NELSON S substitution out			
00:38	22 WHALEN S substitution out			
00:38	0 THOMSEN P substitution in			
00:38	21 JENSEN T substitution in			
00:38				3 SCHOMMER J substitution out
00:38				15 OLSON W substitution out
00:38				22 BIEWEN A substitution in
00:38				32 GUSE J substitution in
00:38		86-95	-9	21 SWANSON S free throw fast break 2 - 2 made (31)
00:27	21 JENSEN T 2pt FG in the paint, driving layup made (11)	88-95	-7	
00:26	0 THOMSEN P foul personal (1 - 12)			21 SWANSON S foul drawn (6)
00:26		88-96	-8	21 SWANSON S free throw 1 - 2 made (32)
00:26		88-97	-9	21 SWANSON S free throw 2 - 2 made (33)
00:17	0 THOMSEN P turnover bad pass (2)			1 KIENITZ B steal (2)
END OF GAME				
BU 88-97 GAC				



Gust. Adolphus at Bethel (MN)

01/04/23 Robertson Center, St. Paul
2022-23 Men's Basketball

Game Time: 7:00 PM
Game Duration: 1:41
Attendance: 246

Officials: Kelly Anlauf, Bryan Anslinger, Duncan Faris

Gust. Adolphus - 47

NO.	Name	F	Min	FG	3P	FT	Rebounds			Fouls		TP	AS	TO	ST	Blocks		+/-
				M-A	M-A	M-A	OR	DR	TOT	PF	FD					BS	BA	
4	Evan Wieker	F	17:27	1-3	0-1	1-1	0	2	2	1	1	3	2	2	0	0	0	-6
21	Spencer Swanson	F	20:00	6-14	0-1	8-8	2	3	5	2	4	20	0	0	0	0	1	-1
22	Adam Biewen	F	18:29	1-4	0-1	0-2	1	1	2	1	2	2	0	0	0	0	1	2
32	Jake Guse	C	08:21	1-1	0-0	1-2	0	2	2	3	2	3	0	0	1	1	0	-1
3	Jordan Schommer	G	08:48	1-1	0-0	0-0	0	0	0	3	0	2	1	1	0	0	0	-3
1	Brady Kienitz		11:27	2-3	2-3	1-3	0	1	1	0	2	7	2	0	2	1	0	1
15	Wyatt Olson		09:46	3-3	1-1	0-1	1	0	1	0	1	7	5	2	0	1	0	4
2	Cam Anderson		03:49	1-1	1-1	0-0	1	1	2	0	0	3	0	1	0	0	0	3
11	Carson Koch		01:53	0-0	0-0	0-0	0	0	0	0	0	0	0	0	0	0	0	-4
Team							0	0	0			0		0				
Totals				16-30	4-8	11-17	5	10	15	10	12	47	10	6	3	3	2	-1

Shooting By Period		
2 nd FG%	16-30	53.3%
3PT%	4-8	50.0%
FT%	11-17	64.7%
GM FG%	16-30	53.3%
3PT%	4-8	50.0%
FT%	11-17	64.7%

Dead Ball Rebounds: 2, 0

Technical Fouls::NONE

Bethel (MN) - 48

NO.	Name	F	Min	FG	3P	FT	Rebounds			Fouls		TP	AS	TO	ST	Blocks		+/-
				M-A	M-A	M-A	OR	DR	TOT	PF	FD					BS	BA	
2	Joey Kidder	F	14:45	3-3	1-1	2-2	0	1	1	3	2	9	4	1	1	0	0	-1
3	Avery Mast	F	16:54	2-4	1-3	0-0	0	2	2	2	0	5	0	0	0	1	0	-2
24	Zach Doely	F	15:59	5-7	0-0	4-5	2	7	9	1	4	14	0	2	0	0	0	-1
0	Payton Thomsen	G	17:40	2-5	1-3	4-5	0	1	1	1	3	9	1	2	0	0	1	2
21	Tommy Jensen	G	11:22	4-8	3-4	0-1	0	0	0	1	1	11	0	0	0	0	1	-1
12	Sam Nelson		09:54	0-1	0-1	0-0	0	1	1	1	0	0	2	1	0	0	0	4
5	Caden Boettcher		07:07	0-0	0-0	0-0	0	1	1	0	0	0	1	0	0	1	0	5
1	Josh Hoffman		03:13	0-1	0-0	0-0	0	0	0	0	0	0	0	0	0	0	1	0
22	Solomon Whalen		03:06	0-0	0-0	0-0	0	0	0	3	0	0	0	0	1	0	0	-1
Team							0	0	0			0		1				
Totals				16-29	6-12	10-13	2	13	15	12	10	48	8	7	2	2	3	1

Shooting By Period		
2 nd FG%	16-29	55.2%
3PT%	6-12	50.0%
FT%	10-13	76.9%
GM FG%	16-29	55.2%
3PT%	6-12	50.0%
FT%	10-13	76.9%

Dead Ball Rebounds: 4, 0

Technical Fouls::NONE

	GAC	BU
Biggest lead	11 (2 nd 1:40)	0 (1 st 20:00)
Best Scoring Run	9(2 nd 1:40)	7(2 nd 4:19)
Lead Changes	0	
Times Tied	0	
Time with Lead	19:43	00:00

Points from	GAC	BU
Turnovers	7	8
Paint	24	20
Second Chance	7	5
Fast Breaks	7	4
Bench	17	0

	Period by Period Scoring		
	1st	2nd	TOT
GAC	50	47	97
BU	40	48	88



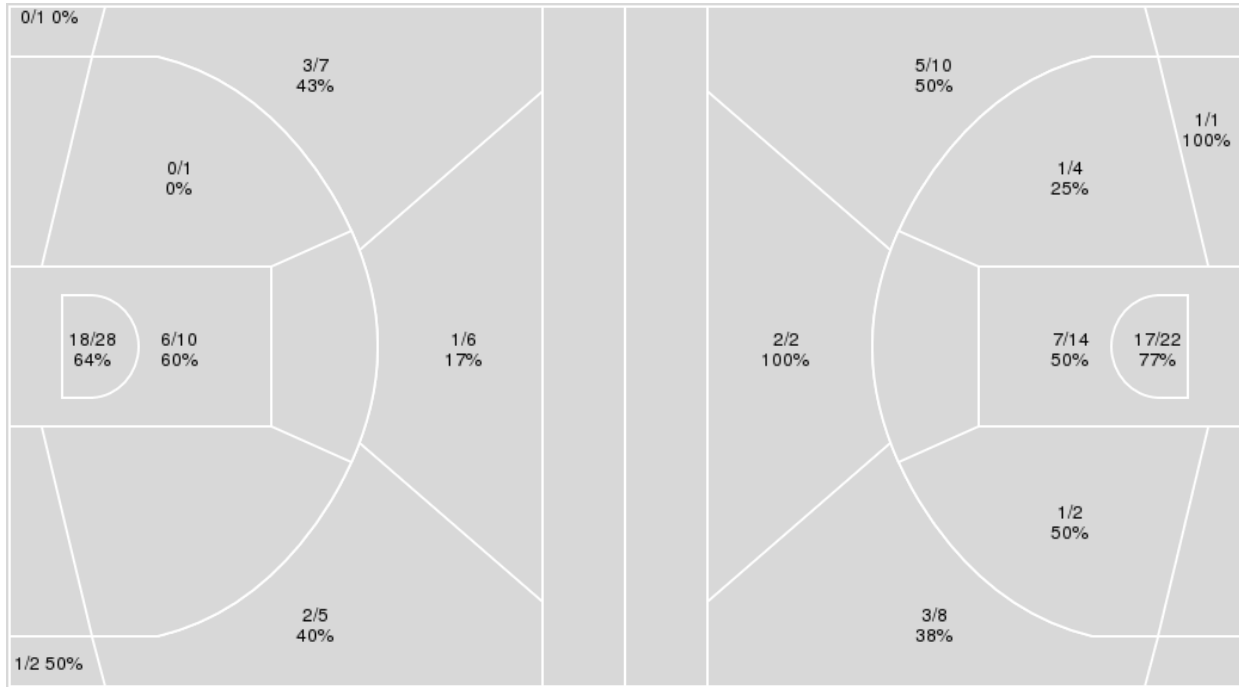
Officials: Kelly Anlauf, Bryan Anslinger, Duncan Faris

{ Players => All; } FG Types => All; Results => All;

{ Players => All; } FG Types => All; Results => All;

Bethel (MN)

Gust. Adolphus



Bethel (MN)	M/A	%
Field Goals	31/60	52
2 Points	24/39	62
3 Points	7/21	33
Free Throws	19/24	79

Gust. Adolphus	M/A	%
Field Goals	37/63	59
2 Points	27/43	63
3 Points	10/20	50
Free Throws	13/20	65



Gust. Adolphus at Bethel (MN)

01/04/23 Robertson Center, St. Paul
2022-23 Men's Basketball

Game Time: 7:00 PM
Game Duration: 1:41
Attendance: 246

Officials: Kelly Anlauf, Bryan Anslinger, Duncan Faris

Gust. Adolphus

No	Name	Mins		Score		Points Diff		Points per Min		Assists		Rebounds		Steals		Turnovers	
		On	Off	On	Off	On	Off	On	Off	On	Off	On	Off	On	Off	On	Off
1	Brady Kienitz	20:13	19:47	54 - 44	43 - 44	10	-1	2.67	2.17	12	7	15	17	2	2	4	7
2	Cam Anderson	08:26	31:34	18 - 8	79 - 80	10	-1	2.13	2.50	3	16	11	21	0	4	5	6
3	Jordan Schommer	22:02	17:58	46 - 52	51 - 36	-6	15	2.09	2.84	7	12	17	15	2	2	7	4
4	Evan Wiekler	33:04	06:56	87 - 84	10 - 4	3	6	2.63	1.44	16	3	24	8	4	0	8	3
11	Carson Koch	04:31	35:29	1 - 11	96 - 77	-10	19	0.22	2.71	0	19	1	31	0	4	0	11
15	Wyatt Olson	16:32	23:28	51 - 34	46 - 54	17	-8	3.08	1.96	13	6	16	16	1	3	6	5
21	Spencer Swanson	37:22	02:38	97 - 82	0 - 6	15	-6	2.60	0.00	19	0	32	0	4	0	11	0
22	Adam Biewen	36:15	03:45	86 - 76	11 - 12	10	-1	2.37	2.93	19	0	29	3	4	0	9	2
32	Jake Guse	21:35	18:25	45 - 49	52 - 39	-4	13	2.08	2.82	6	13	15	17	3	1	5	6

Bethel (MN)

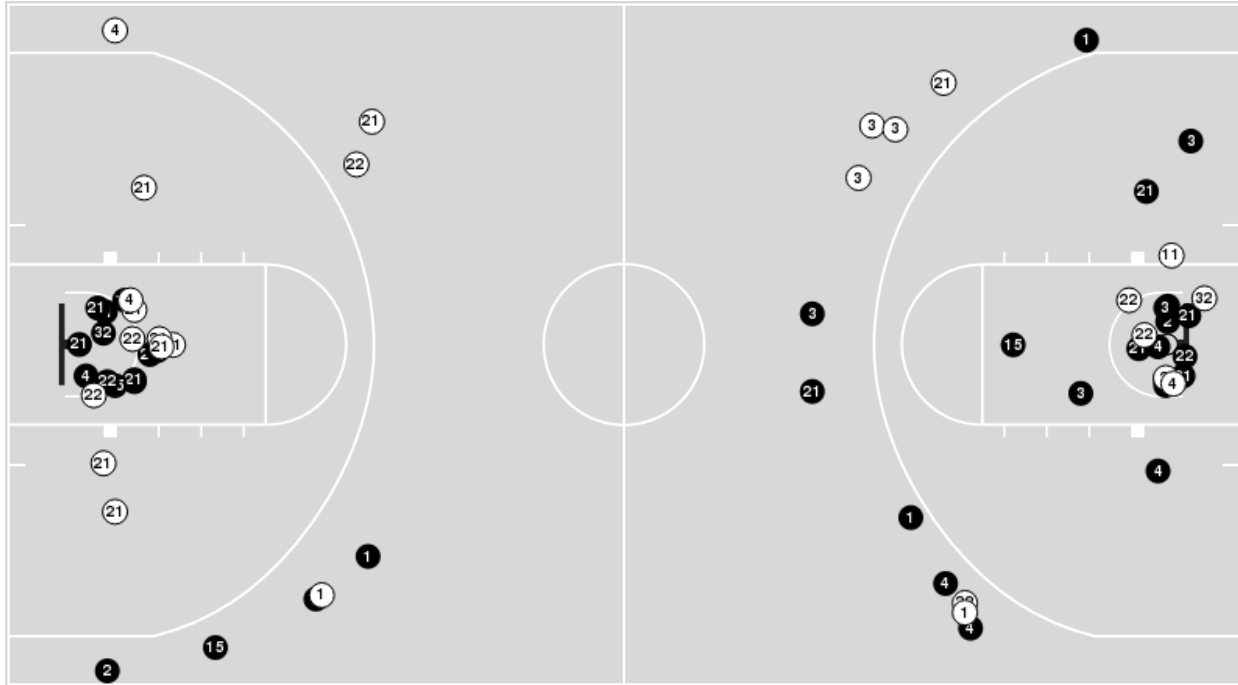
No	Name	Mins		Score		Points Diff		Points per Min		Assists		Rebounds		Steals		Turnovers	
		On	Off	On	Off	On	Off	On	Off	On	Off	On	Off	On	Off	On	Off
0	Payton Thomsen	31:21	08:39	67 - 76	21 - 21	-9	0	2.14	2.43	13	3	19	8	4	1	8	2
1	Josh Hoffman	13:34	26:26	27 - 43	61 - 54	-16	7	1.99	2.31	3	13	6	21	1	4	1	9
2	Joey Kidder	30:27	09:33	64 - 67	24 - 30	-3	-6	2.10	2.51	14	2	23	4	5	0	8	2
3	Avery Mast	31:45	08:15	67 - 70	21 - 27	-3	-6	2.11	2.55	15	1	20	7	5	0	10	0
5	Caden Boettcher	13:53	26:07	27 - 35	61 - 62	-8	-1	1.94	2.34	4	12	9	18	1	4	1	9
12	Sam Nelson	18:48	21:12	44 - 52	44 - 45	-8	-1	2.34	2.08	6	10	10	17	1	4	3	7
21	Tommy Jensen	18:45	21:15	45 - 42	43 - 55	3	-12	2.40	2.02	6	10	18	9	3	2	7	3
22	Solomon Whalen	10:05	29:55	25 - 26	63 - 71	-1	-8	2.48	2.11	6	10	6	21	1	4	3	7
24	Zach Doely	31:22	08:38	74 - 74	14 - 23	0	-9	2.36	1.62	13	3	24	3	4	1	9	1



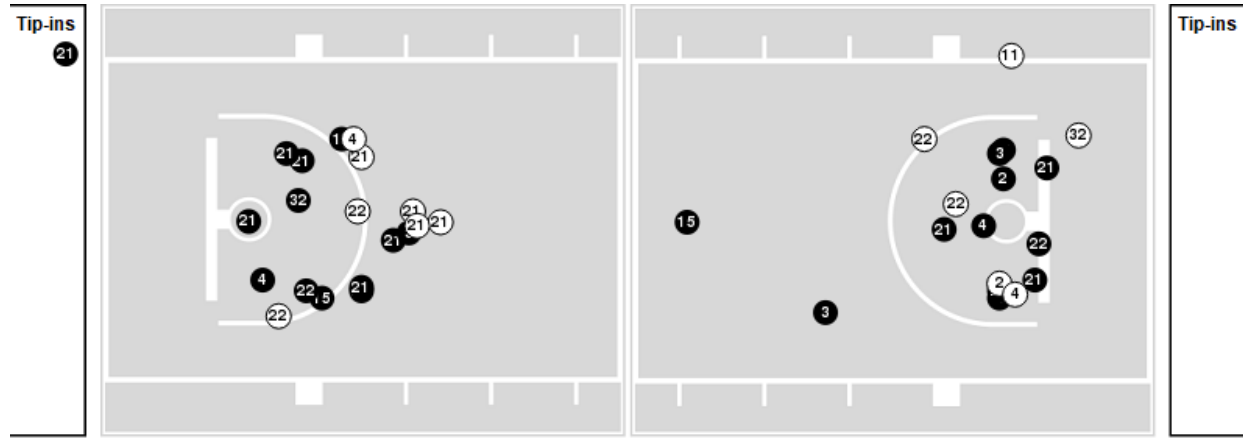
Officials: Kelly Anlauf, Bryan Anslinger, Duncan Faris

Players => AllFG Types=>AllResults=>All
Gust. Adolphus

All Field Goals



Blow Up Chart



● Made ○ Missed N - Player Number

Gust. Adolphus	M/A	%
Field Goals	37/63	59
2 Points	27/43	63
3 Points	10/20	50
Free Throws	13/20	65

Gust. Adolphus	M/A	%
Points in the Paint	48 (24 / 36)	67
Fast Break Points	14 (7/7)	100
Second Chance Points	7 (3/4)	75
Effective FG%	67	

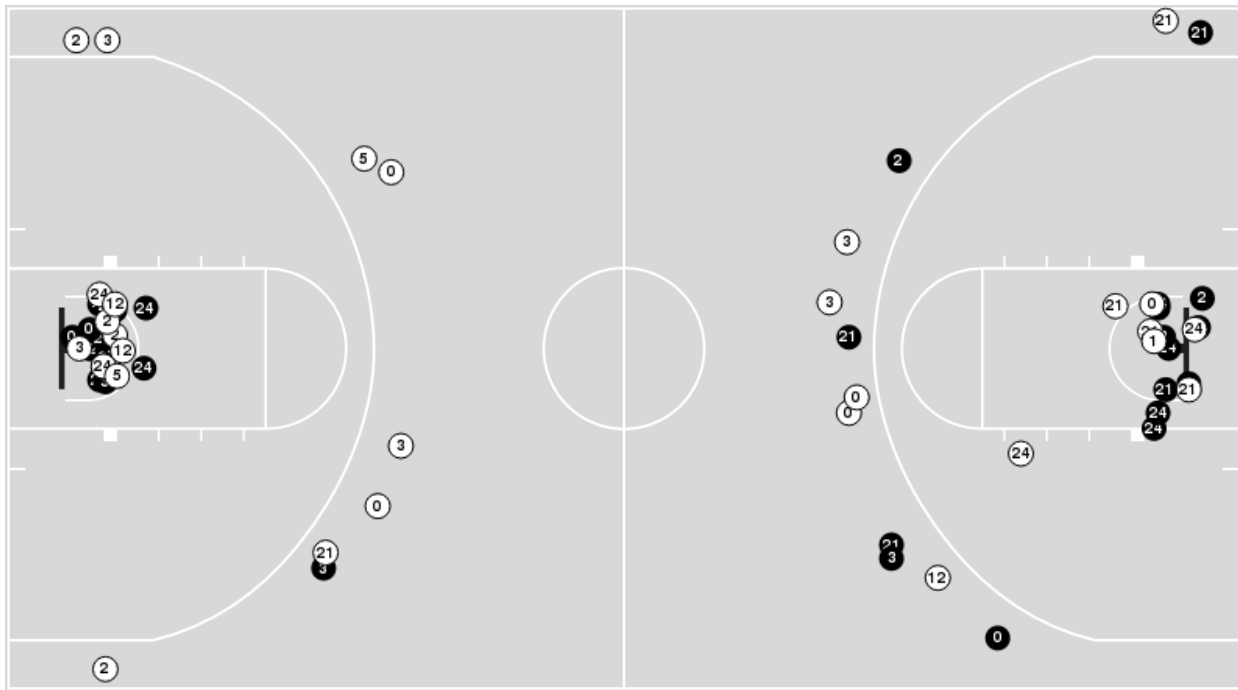


Officials: Kelly Anlauf, Bryan Anslinger, Duncan Faris

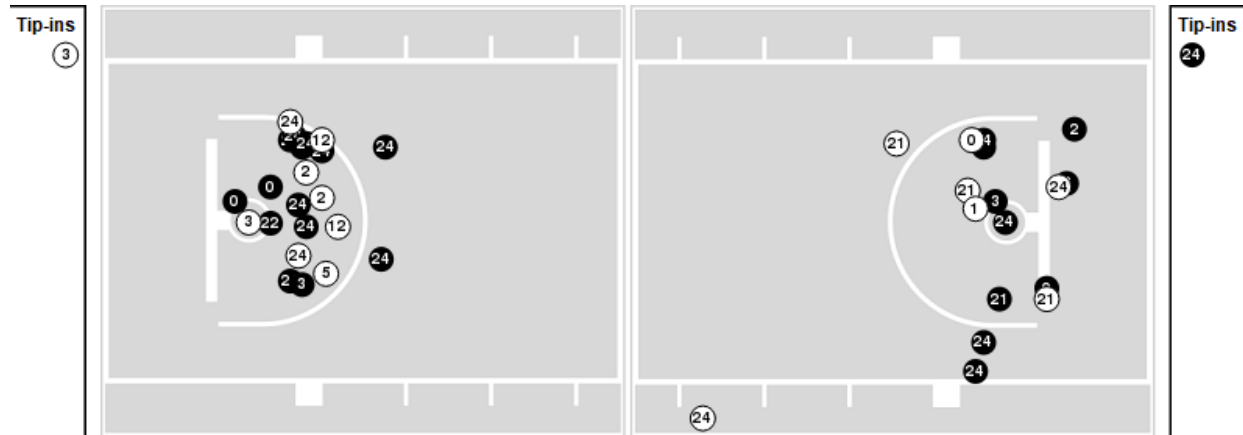
Players => AllFG Types=>AllResults=>All

Bethel (MN)

All Field Goals



Blow Up Chart



● Made ○ Missed N - Player Number

Bethel (MN)	M/A	%
Field Goals	31/60	52
2 Points	24/39	62
3 Points	7/21	33
Free Throws	19/24	79

Bethel (MN)	M/A	%
Points in the Paint	48 (24 / 38)	63
Fast Break Points	4 (2/3)	67
Second Chance Points	7 (4/6)	67
Effective FG%	58	



Gust. Adolphus at Bethel (MN)

01/04/23 Robertson Center, St. Paul
2022-23 Men's Basketball

Game Time: 7:00 PM

Game Duration: 1:41

Attendance: 246

Officials: Kelly Anlauf, Bryan Anslinger, Duncan Farris

Gust. Adolphus

Lineup	Quarter On	Time On	Quarter Off	Time Off	Time on Court	Score	Score Diff	Reb	Stl	Tov	Ass	PPP
3- Schommer J/ 4- Wieker E/ 21- Swanson S/ 22- Biewen A/ 32- Guse J/	1	20:00	1	15:05	04:55	9-9	0	5	1	3	3	0.9000
1- Kienitz B/ 2- Anderson C/ 4- Wieker E/ 15- Olson W/ 21- Swanson S/	1	15:05	1	12:51	02:14	6-4	2	2	0	1	0	1.5464
1- Kienitz B/ 2- Anderson C/ 15- Olson W/ 21- Swanson S/ 22- Biewen A/	1	12:51	1	10:28	02:23	5-0	5	5	0	1	1	1.2500
1- Kienitz B/ 3- Schommer J/ 11- Koch C/ 22- Biewen A/ 32- Guse J/	1	10:28	1	08:28	02:00	0-4	-4	0	0	0	0	0.0000
3- Schommer J/ 4- Wieker E/ 11- Koch C/ 22- Biewen A/ 32- Guse J/	1	08:28	1	07:50	00:38	0-2	-2	0	0	0	0	0.0000
3- Schommer J/ 4- Wieker E/ 21- Swanson S/ 22- Biewen A/ 32- Guse J/	1	07:50	1	05:44	02:06	6-6	0	1	0	0	0	1.5000
1- Kienitz B/ 4- Wieker E/ 15- Olson W/ 21- Swanson S/ 22- Biewen A/	1	05:44	1	03:35	02:09	11-5	6	1	0	0	4	2.7500
3- Schommer J/ 4- Wieker E/ 21- Swanson S/ 22- Biewen A/ 32- Guse J/	1	03:35	2	16:15	07:20	18-22	-4	6	1	2	1	1.1029
1- Kienitz B/ 4- Wieker E/ 21- Swanson S/ 22- Biewen A/ 32- Guse J/	2	16:15	2	15:18	00:57	2-0	2	0	0	0	0	2.0000
1- Kienitz B/ 4- Wieker E/ 15- Olson W/ 21- Swanson S/ 22- Biewen A/	2	15:18	2	14:02	01:16	4-6	-2	0	0	1	2	1.3333
1- Kienitz B/ 2- Anderson C/ 4- Wieker E/ 15- Olson W/ 21- Swanson S/	2	14:02	2	12:46	01:16	2-4	-2	1	0	1	0	0.8197
1- Kienitz B/ 2- Anderson C/ 15- Olson W/ 21- Swanson S/ 22- Biewen A/	2	12:46	2	11:31	01:15	2-0	2	2	0	0	1	2.0000
2- Anderson C/ 3- Schommer J/ 15- Olson W/ 21- Swanson S/ 22- Biewen A/	2	11:31	2	10:13	01:18	3-0	3	1	0	2	1	1.0000
3- Schommer J/ 4- Wieker E/ 15- Olson W/ 21- Swanson S/ 22- Biewen A/	2	10:13	2	08:52	01:21	3-4	-1	1	0	0	1	1.5000
3- Schommer J/ 4- Wieker E/ 21- Swanson S/ 22- Biewen A/ 32- Guse J/	2	08:52	2	06:43	02:09	4-1	3	3	0	0	1	0.8000
1- Kienitz B/ 4- Wieker E/ 21- Swanson S/ 22- Biewen A/ 32- Guse J/	2	06:43	2	06:27	00:16	2-2	0	0	0	0	1	2.0000
1- Kienitz B/ 4- Wieker E/ 11- Koch C/ 21- Swanson S/ 22- Biewen A/	2	06:27	2	04:34	01:53	1-5	-4	1	0	0	0	0.3472
1- Kienitz B/ 4- Wieker E/ 21- Swanson S/ 22- Biewen A/ 32- Guse J/	2	04:34	2	04:19	00:15	0-1	-1	0	0	0	0	0.0000
1- Kienitz B/ 4- Wieker E/ 15- Olson W/ 21- Swanson S/ 22- Biewen A/	2	04:19	2	01:14	03:05	12-7	5	3	1	0	3	2.4590
1- Kienitz B/ 4- Wieker E/ 21- Swanson S/ 22- Biewen A/ 32- Guse J/	2	01:14	2	01:03	00:11	0-0	0	0	0	0	0	0.0000
1- Kienitz B/ 3- Schommer J/ 4- Wieker E/ 15- Olson W/ 21- Swanson S/	2	01:03	2	00:48	00:14	2-4	-2	0	0	0	0	1.5152
1- Kienitz B/ 4- Wieker E/ 21- Swanson S/ 22- Biewen A/ 32- Guse J/	2	00:48	2	00:39	00:10	1-0	1	0	0	0	0	2.2727
1- Kienitz B/ 3- Schommer J/ 4- Wieker E/ 15- Olson W/ 21- Swanson S/	2	00:39	2	00:38	00:01	1-0	1	0	0	0	0	2.2727
1- Kienitz B/ 4- Wieker E/ 21- Swanson S/ 22- Biewen A/ 32- Guse J/	2	00:38	2	00:00	00:38	3-2	1	0	1	0	0	2.2727



Gust. Adolphus at Bethel (MN)

01/04/23 Robertson Center, St. Paul
2022-23 Men's Basketball

Game Time: 7:00 PM

Game Duration: 1:41

Attendance: 246

Officials: Kelly Anlauf, Bryan Anslinger, Duncan Faris

Bethel (MN)

Lineup	Quarter On	Time On	Quarter Off	Time Off	Time on Court	Score	Score Diff	Reb	Stl	Tov	Ass	PPP
0- Thomsen P/ 2- Kidder J/ 3- Mast A/ 21- Jensen T/ 24- Doely Z/	1	20:00	1	15:05	04:55	9-9	0	3	2	1	2	0.9109
0- Thomsen P/ 1- Hoffman J/ 5- Boettcher C/ 12- Nelson S/ 24- Doely Z/	1	15:05	1	12:56	02:09	4-6	-2	1	0	0	1	1.0000
1- Hoffman J/ 2- Kidder J/ 3- Mast A/ 5- Boettcher C/ 12- Nelson S/	1	12:56	1	10:28	02:28	0-5	-5	1	1	0	0	0.0000
2- Kidder J/ 3- Mast A/ 12- Nelson S/ 22- Whalen S/ 24- Doely Z/	1	10:28	1	09:42	00:46	0-0	0	1	0	1	0	0.0000
2- Kidder J/ 3- Mast A/ 21- Jensen T/ 22- Whalen S/ 24- Doely Z/	1	09:42	1	07:50	01:52	6-0	6	3	0	1	1	1.5000
0- Thomsen P/ 2- Kidder J/ 3- Mast A/ 22- Whalen S/ 24- Doely Z/	1	07:50	1	05:44	02:06	6-6	0	1	0	0	3	1.5000
0- Thomsen P/ 1- Hoffman J/ 5- Boettcher C/ 21- Jensen T/ 22- Whalen S/	1	05:44	1	05:25	00:19	1-2	-1	0	0	0	0	2.2727
0- Thomsen P/ 1- Hoffman J/ 5- Boettcher C/ 12- Nelson S/ 22- Whalen S/	1	05:25	1	03:35	01:50	4-9	-5	0	0	0	0	1.3889
0- Thomsen P/ 1- Hoffman J/ 2- Kidder J/ 12- Nelson S/ 24- Doely Z/	1	03:35	1	03:01	00:34	2-2	0	0	0	0	0	1.3889
1- Hoffman J/ 2- Kidder J/ 12- Nelson S/ 21- Jensen T/ 24- Doely Z/	1	03:01	1	02:44	00:17	1-2	-1	1	0	0	0	2.2727
1- Hoffman J/ 2- Kidder J/ 3- Mast A/ 12- Nelson S/ 24- Doely Z/	1	02:44	1	01:54	00:50	5-4	1	0	0	0	1	2.1552
0- Thomsen P/ 1- Hoffman J/ 2- Kidder J/ 3- Mast A/ 24- Doely Z/	1	01:54	1	00:06	01:48	2-5	-3	1	0	0	0	0.8197
1- Hoffman J/ 2- Kidder J/ 3- Mast A/ 22- Whalen S/ 24- Doely Z/	1	00:06	2	20:00	00:06	0-0	0	0	0	0	0	0.0000
0- Thomsen P/ 2- Kidder J/ 3- Mast A/ 21- Jensen T/ 24- Doely Z/	2	20:00	2	16:30	03:30	9-5	4	4	1	1	2	1.3081
0- Thomsen P/ 3- Mast A/ 12- Nelson S/ 21- Jensen T/ 24- Doely Z/	2	16:30	2	15:18	01:12	3-2	1	0	0	1	0	0.6757
0- Thomsen P/ 5- Boettcher C/ 12- Nelson S/ 21- Jensen T/ 24- Doely Z/	2	15:18	2	14:44	00:34	2-0	2	1	0	0	0	2.0000
1- Hoffman J/ 5- Boettcher C/ 12- Nelson S/ 21- Jensen T/ 24- Doely Z/	2	14:44	2	13:23	01:21	6-4	2	2	0	0	0	2.4590
0- Thomsen P/ 1- Hoffman J/ 3- Mast A/ 5- Boettcher C/ 12- Nelson S/	2	13:23	2	11:31	01:52	2-4	-2	0	0	1	1	0.6667
0- Thomsen P/ 2- Kidder J/ 3- Mast A/ 22- Whalen S/ 24- Doely Z/	2	11:31	2	08:52	02:39	4-6	-2	1	1	1	1	0.8000
0- Thomsen P/ 2- Kidder J/ 3- Mast A/ 21- Jensen T/ 24- Doely Z/	2	08:52	2	07:54	00:58	0-2	-2	1	0	1	0	0.0000
0- Thomsen P/ 2- Kidder J/ 5- Boettcher C/ 21- Jensen T/ 24- Doely Z/	2	07:54	2	06:43	01:11	1-2	-1	2	0	0	0	0.4098
0- Thomsen P/ 3- Mast A/ 5- Boettcher C/ 12- Nelson S/ 21- Jensen T/	2	06:43	2	06:27	00:16	2-3	-1	0	0	0	0	2.2727
0- Thomsen P/ 2- Kidder J/ 3- Mast A/ 5- Boettcher C/ 12- Nelson S/	2	06:27	2	04:34	01:53	5-0	5	2	0	0	2	1.6667
0- Thomsen P/ 2- Kidder J/ 3- Mast A/ 12- Nelson S/ 24- Doely Z/	2	04:34	2	02:47	01:47	5-5	0	1	0	0	0	1.7361
0- Thomsen P/ 2- Kidder J/ 3- Mast A/ 21- Jensen T/ 24- Doely Z/	2	02:47	2	02:29	00:18	0-2	-2	0	0	0	0	0.0000
2- Kidder J/ 3- Mast A/ 12- Nelson S/ 21- Jensen T/ 24- Doely Z/	2	02:29	2	01:57	00:32	0-3	-3	0	0	0	0	0.0000
0- Thomsen P/ 2- Kidder J/ 3- Mast A/ 21- Jensen T/ 24- Doely Z/	2	01:57	2	01:26	00:31	3-2	1	0	0	1	1	1.5000
2- Kidder J/ 3- Mast A/ 12- Nelson S/ 22- Whalen S/ 24- Doely Z/	2	01:26	2	01:14	00:12	0-0	0	0	0	0	0	0.0000
0- Thomsen P/ 2- Kidder J/ 3- Mast A/ 21- Jensen T/ 24- Doely Z/	2	01:14	2	01:03	00:11	0-0	0	1	0	0	0	0.0000
0- Thomsen P/ 2- Kidder J/ 3- Mast A/ 22- Whalen S/ 24- Doely Z/	2	01:03	2	01:03	00:00	1-0	1	0	0	0	0	2.2727
2- Kidder J/ 3- Mast A/ 12- Nelson S/ 22- Whalen S/ 24- Doely Z/	2	01:03	2	00:48	00:14	3-2	1	0	0	0	1	3.0000
0- Thomsen P/ 2- Kidder J/ 3- Mast A/ 21- Jensen T/ 24- Doely Z/	2	00:48	2	00:39	00:10	0-1	-1	0	0	0	0	0.0000
2- Kidder J/ 3- Mast A/ 12- Nelson S/ 22- Whalen S/ 24- Doely Z/	2	00:39	2	00:38	00:01	0-1	-1	0	0	0	0	0.0000
0- Thomsen P/ 2- Kidder J/ 3- Mast A/ 21- Jensen T/ 24- Doely Z/	2	00:38	2	00:00	00:38	2-3	-1	0	0	1	0	1.0000



Gust. Adolphus at Bethel (MN)

01/04/23 Robertson Center, St. Paul
2022-23 Men's Basketball

Game Time: 7:00 PM

Game Duration: 1:41

Attendance: 246

Officials: Kelly Anlauf, Bryan Anslinger, Duncan Faris

Gust. Adolphus

Lineup	Time	Score	Score Diff	Pts/Min	Reb	Stl	Tov	Ass	PPP
3- Schommer J/ 4- Wieker E/ 21- Swanson S/ 22- Biewen A/ 32- Guse J/	16:30	37-38	-1	2.2424	15	2	5	5	1.0476
1- Kienitz B/ 4- Wieker E/ 15- Olson W/ 21- Swanson S/ 22- Biewen A/	06:30	27-18	9	4.1538	4	1	1	9	2.2727
1- Kienitz B/ 2- Anderson C/ 15- Olson W/ 21- Swanson S/ 22- Biewen A/	03:38	7-0	7	1.9266	7	0	1	2	1.4000
1- Kienitz B/ 2- Anderson C/ 4- Wieker E/ 15- Olson W/ 21- Swanson S/	03:30	8-8	0	2.2857	3	0	2	0	1.2658
1- Kienitz B/ 4- Wieker E/ 21- Swanson S/ 22- Biewen A/ 32- Guse J/	02:27	8-5	3	3.2653	0	1	0	1	1.7241
1- Kienitz B/ 3- Schommer J/ 11- Koch C/ 22- Biewen A/ 32- Guse J/	02:00	0-4	-4	0.0000	0	0	0	0	0.0000
1- Kienitz B/ 4- Wieker E/ 11- Koch C/ 21- Swanson S/ 22- Biewen A/	01:53	1-5	-4	0.5310	1	0	0	0	0.3472
3- Schommer J/ 4- Wieker E/ 15- Olson W/ 21- Swanson S/ 22- Biewen A/	01:21	3-4	-1	2.2222	1	0	0	1	1.5000
2- Anderson C/ 3- Schommer J/ 15- Olson W/ 21- Swanson S/ 22- Biewen A/	01:18	3-0	3	2.3077	1	0	2	1	1.0000
3- Schommer J/ 4- Wieker E/ 11- Koch C/ 22- Biewen A/ 32- Guse J/	00:38	0-2	-2	0.0000	0	0	0	0	0.0000
1- Kienitz B/ 3- Schommer J/ 4- Wieker E/ 15- Olson W/ 21- Swanson S/	00:15	3-4	-1	12.0000	0	0	0	0	1.7045



Officials: Kelly Anlauf, Bryan Anslinger, Duncan Faris

Bethel (MN)

Lineup	Time	Score	Score Diff	Pts/Min	Reb	Stl	Tov	Ass	PPP
0- Thomsen P/ 2- Kidder J/ 3- Mast A/ 21- Jensen T/ 24- Doely Z/	11:11	23-24	-1	2.0566	9	3	5	5	1.0159
0- Thomsen P/ 2- Kidder J/ 3- Mast A/ 22- Whalen S/ 24- Doely Z/	04:45	11-12	-1	2.3158	2	1	1	4	1.1653
1- Hoffman J/ 2- Kidder J/ 3- Mast A/ 5- Boettcher C/ 12- Nelson S/	02:28	0-5	-5	0.0000	1	1	0	0	0.0000
0- Thomsen P/ 1- Hoffman J/ 5- Boettcher C/ 12- Nelson S/ 24- Doely Z/	02:09	4-6	-2	1.8605	1	0	0	1	1.0000
0- Thomsen P/ 2- Kidder J/ 3- Mast A/ 5- Boettcher C/ 12- Nelson S/	01:53	5-0	5	2.6549	2	0	0	2	1.6667
2- Kidder J/ 3- Mast A/ 21- Jensen T/ 22- Whalen S/ 24- Doely Z/	01:52	6-0	6	3.2143	3	0	1	1	1.5000
0- Thomsen P/ 1- Hoffman J/ 3- Mast A/ 5- Boettcher C/ 12- Nelson S/	01:52	2-4	-2	1.0714	0	0	1	1	0.6667
0- Thomsen P/ 1- Hoffman J/ 5- Boettcher C/ 12- Nelson S/ 22- Whalen S/	01:50	4-9	-5	2.1818	0	0	0	0	1.3889
0- Thomsen P/ 1- Hoffman J/ 2- Kidder J/ 3- Mast A/ 24- Doely Z/	01:48	2-5	-3	1.1111	1	0	0	0	0.8197
0- Thomsen P/ 2- Kidder J/ 3- Mast A/ 12- Nelson S/ 24- Doely Z/	01:47	5-5	0	2.8037	1	0	0	0	1.7361
1- Hoffman J/ 5- Boettcher C/ 12- Nelson S/ 21- Jensen T/ 24- Doely Z/	01:21	6-4	2	4.4444	2	0	0	0	2.4590
2- Kidder J/ 3- Mast A/ 12- Nelson S/ 22- Whalen S/ 24- Doely Z/	01:13	3-3	0	2.4658	1	0	1	1	1.5000
0- Thomsen P/ 3- Mast A/ 12- Nelson S/ 21- Jensen T/ 24- Doely Z/	01:12	3-2	1	2.5000	0	0	1	0	0.6757
0- Thomsen P/ 2- Kidder J/ 5- Boettcher C/ 21- Jensen T/ 24- Doely Z/	01:11	1-2	-1	0.8451	2	0	0	0	0.4098
1- Hoffman J/ 2- Kidder J/ 3- Mast A/ 12- Nelson S/ 24- Doely Z/	00:50	5-4	1	6.0000	0	0	0	1	2.1552
0- Thomsen P/ 1- Hoffman J/ 2- Kidder J/ 12- Nelson S/ 24- Doely Z/	00:34	2-2	0	3.5294	0	0	0	0	1.3889
0- Thomsen P/ 5- Boettcher C/ 12- Nelson S/ 21- Jensen T/ 24- Doely Z/	00:34	2-0	2	3.5294	1	0	0	0	2.0000
2- Kidder J/ 3- Mast A/ 12- Nelson S/ 21- Jensen T/ 24- Doely Z/	00:32	0-3	-3	0.0000	0	0	0	0	0.0000
0- Thomsen P/ 1- Hoffman J/ 5- Boettcher C/ 21- Jensen T/ 22- Whalen S/	00:19	1-2	-1	3.1579	0	0	0	0	2.2727
1- Hoffman J/ 2- Kidder J/ 12- Nelson S/ 21- Jensen T/ 24- Doely Z/	00:17	1-2	-1	3.5294	1	0	0	0	2.2727
0- Thomsen P/ 3- Mast A/ 5- Boettcher C/ 12- Nelson S/ 21- Jensen T/	00:16	2-3	-1	7.5000	0	0	0	0	2.2727
1- Hoffman J/ 2- Kidder J/ 3- Mast A/ 22- Whalen S/ 24- Doely Z/	00:06	0-0	0	0.0000	0	0	0	0	0.0000