



Official Basketball Box Score - Final
Gust. Adolphus at Puget Sound
 12/28/22 Memorial Fieldhouse, Tacoma
 2022-23 Men's Basketball

Game Time: 6:00 PM
 Game Duration: 1:45
 Attendance: 200

Officials:

Gust. Adolphus - 76

Record: 4-6

NO.	Name	F	Min	FG			3P			FT			Rebounds			Fouls		TP	AS	TO	ST	Blocks		+/-
				M-A	M-A	M-A	OR	DR	TOT	PF	FD	BS	BA											
4	Evan Wieker	F	27:44	2-5	1-1	3-6	1	3	4	2	3	8	1	1	0	1	0	3						
21	Spencer Swanson	F	32:26	8-19	2-4	2-3	3	9	12	2	4	20	3	1	2	1	2	0						
22	Adam Biewen	F	32:45	5-9	0-1	1-3	4	5	9	2	4	11	2	3	3	0	0	-3						
32	Jake Guse	C	22:15	4-7	0-0	2-4	2	4	6	1	2	10	1	1	1	2	0	9						
3	Jordan Schommer	G	24:38	3-8	1-4	2-2	0	1	1	3	2	9	2	2	0	0	0	14						
1	Brady Kienitz		18:03	2-5	1-4	0-0	1	0	1	2	0	5	0	0	0	0	0	-9						
2	Cam Anderson		11:45	0-3	0-0	0-0	0	1	1	1	1	0	0	1	0	0	0	-13						
23	Dawson Kellen		07:19	0-2	0-0	0-0	0	0	0	1	0	0	0	2	0	0	1	-16						
11	Carson Koch		09:30	0-0	0-0	1-2	1	1	2	0	1	1	1	0	0	0	0	7						
15	Wyatt Olson		13:35	5-10	1-1	1-1	2	5	7	0	1	12	1	1	0	0	0	3						
Team							1	3	4			0			0									
Totals				29-68	6-15	12-21	15	32	47	14	18	76	11	12	6	4	3	-1						

Shooting By Period		
1 st FG%	17-39	43.6%
3PT%	4-9	44.4%
FT%	5-7	71.4%
2 nd FG%	12-29	41.4%
3PT%	2-6	33.3%
FT%	7-14	50%
GM FG%	29-68	42.6%
3PT%	6-15	40.0%
FT%	12-21	57.1%

Dead Ball Rebounds: 5, 0

Technical Fouls::NONE

Puget Sound - 77

Record: 7-3

NO.	Name	F	Min	FG			3P			FT			Rebounds			Fouls		TP	AS	TO	ST	Blocks		+/-
				M-A	M-A	M-A	OR	DR	TOT	PF	FD	BS	BA											
0	Mussie Teclemariam	F	29:27	5-10	1-3	6-8	3	4	7	3	6	17	1	4	1	0	0	-7						
11	Grant Erickson	F	25:07	5-8	0-0	0-0	4	8	12	4	3	10	4	2	0	0	1	-4						
12	Taj Phillips	G	23:42	1-8	0-0	0-0	0	3	3	4	0	2	6	1	1	0	0	-7						
13	Liam Rutledge	G	28:50	4-13	2-7	0-0	0	0	0	0	0	10	1	1	1	0	1	-7						
20	Will Pohland	G	30:55	4-9	1-4	0-1	0	1	1	2	2	9	2	0	1	0	0	0						
1	Drew Gillette		18:37	3-7	1-4	4-4	0	2	2	0	2	11	3	1	1	0	0	11						
2	Dezman Baker		24:19	5-6	2-2	0-0	1	4	5	4	0	12	1	0	0	2	0	18						
25	Jack Bailey		04:31	0-1	0-0	0-0	1	0	1	1	0	0	1	1	0	0	1	3						
33	Charlie DeBoer		12:07	2-6	2-4	0-0	1	3	4	0	0	6	0	0	0	1	1	-1						
21	Zac Claus		02:25	0-0	0-0	0-0	0	1	1	0	1	0	0	0	0	0	0	-1						
Team							0	1	1			0			0									
Totals				29-68	9-24	10-13	10	27	37	18	14	77	19	10	5	3	4	1						

Shooting By Period		
1 st FG%	16-35	45.7%
3PT%	5-13	38.5%
FT%	3-4	75%
2 nd FG%	13-33	39.4%
3PT%	4-11	36.4%
FT%	7-9	77.8%
GM FG%	29-68	42.6%
3PT%	9-24	37.5%
FT%	10-13	76.9%

Dead Ball Rebounds: 0, 1

Technical Fouls::NONE

	GST	UPS
Biggest lead	12 (2 nd 14:30)	12 (1 st 11:59)
Best Scoring Run	9(2 nd 14:30)	13(1 st 12:45)
Lead Changes	13	
Times Tied	8	
Time with Lead	16:53	19:58

	GST	UPS
Points from		
Turnovers	14	12
Paint	34	32
Second Chance	20	9
Fast Breaks	5	5
Bench	18	29

	Period by Period Scoring		
	1st	2nd	TOT
GST	43	33	76
UPS	40	37	77



Official Basketball Play by Play - First Half
Gust. Adolphus at Puget Sound
 12/28/22 Memorial Fieldhouse, Tacoma
 2022-23 Men's Basketball

Game Time: 6:00 PM
Game Duration: 1:45
Attendance: 200

Officials:

Period 1

Quarter Starters:

UPS	0 Teclemariam M	11 Erickson G	12 Phillips T	13 Rutledge L	20 Pohland W
GST	3 Schommer J	4 Wieker E	21 Swanson S	22 Biewen A	32 Guse J

Game Time	UPS	Score	Diff	GST
20:00	11 ERICKSON G jumpball lost			32 GUSE J jumpball won
19:44		0-3	-3	4 WIEKER E 3pt FG , jump shot made (3)
19:44				32 GUSE J assist (1)
19:32	0 TECLEMARIAM M 3pt FG , jump shot missed			
19:28				4 WIEKER E defensive rebound (1)
19:20				22 BIEWEN A 2pt FG in the paint, jump shot missed
19:16	11 ERICKSON G defensive rebound (1)			
19:15	20 POHLAND W 2pt FG fast break in the paint, layup made (2)	2-3	-1	
19:15	12 PHILLIPS T assist (1)			
18:52		2-6	-4	21 SWANSON S 3pt FG , jump shot made (3)
18:52				3 SCHOMMER J assist (1)
18:40	13 RUTLEDGE L 3pt FG , jump shot made (3)	5-6	-1	
18:40	11 ERICKSON G assist (1)			
18:26	12 PHILLIPS T steal (1)			3 SCHOMMER J turnover bad pass (1)
18:20	12 PHILLIPS T 2pt FG from turnover in the paint, layup missed			
18:15				21 SWANSON S defensive rebound (1)
18:07				21 SWANSON S 2pt FG in the paint, jump shot missed
18:02	11 ERICKSON G defensive rebound (2)			
17:50	0 TECLEMARIAM M 2pt FG in the paint, layup made (2)	7-6	1	
17:50	11 ERICKSON G assist (2)			
17:29	11 ERICKSON G foul shooting (1 - 1)			32 GUSE J foul drawn (1)
17:29		7-7	0	32 GUSE J free throw 1 - 2 made (1)
17:29				32 GUSE J free throw 2 - 2 missed
17:29	11 ERICKSON G defensive rebound (3)			
17:18	13 RUTLEDGE L 2pt FG in the paint, layup made (5)	9-7	2	
17:05		9-9	0	32 GUSE J 2pt FG outside the paint, jump shot made (3)
16:42	0 TECLEMARIAM M turnover bad pass (1)			21 SWANSON S steal (1)
16:36				22 BIEWEN A 2pt FG from turnover in the paint, layup missed
16:29				22 BIEWEN A offensive rebound (1)
16:29		9-11	-2	22 BIEWEN A 2pt FG from turnover second chance in the paint, layup made (2)
16:25	20 POHLAND W 2pt FG outside the paint, jump shot made (4)	11-11	0	
16:25	12 PHILLIPS T assist (2)			
16:25	11 ERICKSON G substitution out			
16:25	12 PHILLIPS T substitution out			
16:25	13 RUTLEDGE L substitution out			
16:25	1 GILLETTE D substitution in			
16:25	2 BAKER D substitution in			
16:25	25 BAILEY J substitution in			
16:25				3 SCHOMMER J substitution out
16:25				4 WIEKER E substitution out
16:25				32 GUSE J substitution out
16:25				1 KIENITZ B substitution in



Official Basketball Play by Play - First Half
Gust. Adolphus at Puget Sound
 12/28/22 Memorial Fieldhouse, Tacoma
 2022-23 Men's Basketball

Game Time: 6:00 PM
Game Duration: 1:45
Attendance: 200

Officials:

Game Time	UPS	Score	Diff	GST
16:25				2 ANDERSON C substitution in
16:25				23 KELLEN D substitution in
16:12				21 SWANSON S 2pt FG in the paint, layup missed
16:06	0 TECLEMARIAM M defensive rebound (1)			
16:04	1 GILLETTE D 2pt FG in the paint, layup missed			
16:04				defensive rebound (4)
15:57	Timeout media			
15:32	0 TECLEMARIAM M foul drawn (1)			21 SWANSON S foul offensive (1 - 1)
15:32				21 SWANSON S turnover offensive (1)
15:21	0 TECLEMARIAM M 3pt FG from turnover, jump shot made (5)	14-11	3	
15:21	25 BAILEY J assist (1)			
15:05				1 KIENITZ B 3pt FG , jump shot missed
15:02				1 KIENITZ B offensive rebound (1)
14:56	20 POHLAND W steal (1)			23 KELLEN D turnover bad pass (1)
14:37	20 POHLAND W 3pt FG from turnover, jump shot made (7)	17-11	6	
14:37	1 GILLETTE D assist (1)			
14:21				21 SWANSON S 2pt FG outside the paint, jump shot missed
14:18	2 BAKER D defensive rebound (1)			
13:59	1 GILLETTE D 3pt FG , jump shot missed			
13:54				2 ANDERSON C defensive rebound (1)
13:54	25 BAILEY J foul personal (1 - 2)			2 ANDERSON C foul drawn (1)
13:54	0 TECLEMARIAM M substitution out			
13:54	20 POHLAND W substitution out			
13:54	25 BAILEY J substitution out			
13:54	11 ERICKSON G substitution in			
13:54	12 PHILLIPS T substitution in			
13:54	13 RUTTLEDGE L substitution in			
13:45				21 SWANSON S 2pt FG in the paint, jump shot missed
13:42	2 BAKER D defensive rebound (2)			
13:38	2 BAKER D 2pt FG fast break in the paint, layup made (2)	19-11	8	
13:14				23 KELLEN D 2pt FG outside the paint, jump shot missed
13:11	1 GILLETTE D defensive rebound (1)			
13:05	12 PHILLIPS T 2pt FG in the paint, jump shot missed			
13:01				21 SWANSON S defensive rebound (2)
12:55				2 ANDERSON C 2pt FG outside the paint, jump shot missed
12:52	12 PHILLIPS T defensive rebound (1)			
12:45	13 RUTTLEDGE L 3pt FG , jump shot made (8)	22-11	11	
12:45	2 BAKER D assist (1)			
12:44				2 ANDERSON C substitution out
12:44				21 SWANSON S substitution out
12:44				22 BIEWEN A substitution out
12:44				23 KELLEN D substitution out
12:44				3 SCHOMMER J substitution in
12:44				4 WIEKER E substitution in
12:44				11 KOCH C substitution in
12:44				32 GUSE J substitution in
12:20				4 WIEKER E 2pt FG outside the paint, jump shot missed
12:17				32 GUSE J offensive rebound (1)
12:14		22-13	9	32 GUSE J 2pt FG second chance in the paint, layup made (5)



Official Basketball Play by Play - First Half
Gust. Adolphus at Puget Sound
 12/28/22 Memorial Fieldhouse, Tacoma
 2022-23 Men's Basketball

Game Time: 6:00 PM
Game Duration: 1:45
Attendance: 200

Officials:

Game Time	UPS	Score	Diff	GST
11:59	1 GILLETTE D 3pt FG , jump shot made (3)	25-13	12	
11:59	12 PHILLIPS T assist (3)			
11:42				32 GUSE J 2pt FG in the paint, layup missed
11:39	12 PHILLIPS T defensive rebound (2)			
11:34	13 RUTTLEDGE L 3pt FG , jump shot missed			
11:31				11 KOCH C defensive rebound (1)
11:26		25-16	9	3 SCHOMMER J 3pt FG , jump shot made (3)
11:26				11 KOCH C assist (1)
11:05	1 GILLETTE D 2pt FG in the paint, layup made (5)	27-16	11	
11:05	13 RUTTLEDGE L assist (1)			
10:51	12 PHILLIPS T foul shooting (1 - 3)			3 SCHOMMER J foul drawn (1)
10:51	1 GILLETTE D substitution out			
10:51	2 BAKER D substitution out			
10:51	0 TECLEMARIAM M substitution in			
10:51	33 DEBOER C substitution in			
10:51		27-17	10	3 SCHOMMER J free throw 1 - 2 made (4)
10:51		27-18	9	3 SCHOMMER J free throw 2 - 2 made (5)
10:33	11 ERICKSON G foul drawn (1)			1 KIENITZ B foul personal (1 - 2)
10:33				1 KIENITZ B substitution out
10:33				32 GUSE J substitution out
10:33				15 OLSON W substitution in
10:33				21 SWANSON S substitution in
10:28	13 RUTTLEDGE L 3pt FG , jump shot missed			
10:24				3 SCHOMMER J defensive rebound (1)
10:08		27-20	7	15 OLSON W 2pt FG outside the paint, jump shot made (2)
09:54	11 ERICKSON G 2pt FG outside the paint, jump shot made (2)	29-20	9	
09:54	12 PHILLIPS T assist (4)			
09:46				3 SCHOMMER J 3pt FG , jump shot missed
09:42	11 ERICKSON G defensive rebound (4)			
09:40	11 ERICKSON G foul offensive (2 - 4)			4 WIEKER E foul drawn (1)
09:40	11 ERICKSON G turnover offensive (1)			
09:40	11 ERICKSON G substitution out			
09:40	13 RUTTLEDGE L substitution out			
09:40	2 BAKER D substitution in			
09:40	20 POHLAND W substitution in			
09:40				11 KOCH C substitution out
09:40				22 BIEWEN A substitution in
09:33	2 BAKER D foul shooting (1 - 5)			21 SWANSON S foul drawn (1)
09:33				21 SWANSON S free throw 1 - 2 missed
09:33				offensive dead ball rebound (1)
09:33		29-21	8	21 SWANSON S free throw 2 - 2 made (4)
09:18	0 TECLEMARIAM M 3pt FG , jump shot missed			
09:15				21 SWANSON S defensive rebound (3)
09:04				15 OLSON W 2pt FG in the paint, layup missed
09:01	2 BAKER D defensive rebound (3)			
08:54	33 DEBOER C 3pt FG , jump shot missed			
08:54				defensive rebound (12)
08:39				21 SWANSON S 2pt FG in the paint, jump shot blocked
08:39	2 BAKER D block (1)			



Official Basketball Play by Play - First Half
Gust. Adolphus at Puget Sound
 12/28/22 Memorial Fieldhouse, Tacoma
 2022-23 Men's Basketball

Game Time: 6:00 PM
Game Duration: 1:45
Attendance: 200

Officials:

Game Time	UPS	Score	Diff	GST
08:32	12 PHILLIPS T defensive rebound (3)			
08:31	33 DEBOER C 2pt FG in the paint, jump shot missed			
08:31	0 TECLEMARIAM M offensive rebound (2)			
08:31	0 TECLEMARIAM M turnover travel (2)			
08:31	Timeout 30 Sec			
08:31				4 WIEKER E substitution out
08:31				1 KIENITZ B substitution in
08:25	2 BAKER D foul personal (2 - 6)			21 SWANSON S foul drawn (2)
08:25	2 BAKER D substitution out			
08:25	1 GILLETTE D substitution in			
08:15				21 SWANSON S 2pt FG from turnover in the paint, jump shot missed
08:09				22 BIEWEN A offensive rebound (2)
08:09		29-23	6	22 BIEWEN A 2pt FG from turnover second chance in the paint, layup made (4)
08:08	12 PHILLIPS T turnover bad pass (1)			
08:08	0 TECLEMARIAM M substitution out			
08:08	13 RUTTLEDGE L substitution in			
08:01		29-25	4	22 BIEWEN A 2pt FG from turnover in the paint, layup made (6)
08:01	12 PHILLIPS T foul shooting (2 - 7)			22 BIEWEN A foul drawn (1)
08:01	12 PHILLIPS T substitution out			
08:01	33 DEBOER C substitution out			
08:01	11 ERICKSON G substitution in			
08:01	21 CLAUS Z substitution in			
08:01				3 SCHOMMER J substitution out
08:01				2 ANDERSON C substitution in
08:01		29-26	3	22 BIEWEN A free throw 1 - 1 made (7)
07:58	Timeout media			
07:45	13 RUTTLEDGE L 3pt FG , jump shot missed			
07:42				22 BIEWEN A defensive rebound (3)
07:32				22 BIEWEN A 3pt FG , jump shot missed
07:29				21 SWANSON S offensive rebound (4)
07:18		29-28	1	15 OLSON W 2pt FG second chance in the paint, layup made (4)
07:18				22 BIEWEN A assist (1)
06:59	1 GILLETTE D 2pt FG in the paint, layup made (7)	31-28	3	
06:59	11 ERICKSON G assist (3)			
06:36				1 KIENITZ B 3pt FG , jump shot missed
06:36	defensive dead ball rebound (1)			
06:36				21 SWANSON S substitution out
06:36				23 KELLEN D substitution in
06:23	20 POHLAND W 3pt FG , jump shot missed			
06:20				15 OLSON W defensive rebound (1)
06:05				15 OLSON W 2pt FG in the paint, layup missed
06:02	21 CLAUS Z defensive rebound (1)			
05:56				15 OLSON W substitution out
05:56				22 BIEWEN A substitution out
05:56				23 KELLEN D substitution out
05:56				3 SCHOMMER J substitution in
05:56				4 WIEKER E substitution in



Official Basketball Play by Play - First Half
Gust. Adolphus at Puget Sound
 12/28/22 Memorial Fieldhouse, Tacoma
 2022-23 Men's Basketball

Game Time: 6:00 PM
Game Duration: 1:45
Attendance: 200

Officials:

Game Time	UPS	Score	Diff	GST
05:56				32 GUSE J substitution in
05:56				1 KIENITZ B substitution out
05:56				22 BIEWEN A substitution in
05:52	13 RUTTLEDGE L 2pt FG outside the paint, jump shot made (10)	33-28	5	
05:41		33-30	3	22 BIEWEN A 2pt FG outside the paint, jump shot made (9)
05:36	21 CLAUS Z foul drawn (1)			3 SCHOMMER J foul personal (1 - 3)
05:36	21 CLAUS Z substitution out			
05:36	0 TECLEMARIAM M substitution in			
05:16	13 RUTTLEDGE L 2pt FG in the paint, layup missed			
05:13				32 GUSE J defensive rebound (2)
05:03		33-32	1	32 GUSE J 2pt FG in the paint, layup made (7)
04:53	1 GILLETTE D turnover out of bounds (1)			
04:53	1 GILLETTE D substitution out			
04:53	12 PHILLIPS T substitution in			
04:32				2 ANDERSON C 2pt FG from turnover in the paint, layup missed
04:29	11 ERICKSON G defensive rebound (5)			
04:27				2 ANDERSON C substitution out
04:27				11 KOCH C substitution in
04:00	11 ERICKSON G 2pt FG in the paint, layup made (4)	35-32	3	
04:00	12 PHILLIPS T assist (5)			
03:42	Timeout media			
03:42				22 BIEWEN A substitution out
03:42				21 SWANSON S substitution in
03:38				3 SCHOMMER J 3pt FG , jump shot missed
03:35	11 ERICKSON G defensive rebound (6)			
03:17	12 PHILLIPS T 2pt FG outside the paint, jump shot missed			
03:14				21 SWANSON S defensive rebound (5)
03:06		35-34	1	21 SWANSON S 2pt FG in the paint, layup made (6)
02:36	20 POHLAND W 2pt FG in the paint, layup missed			
02:32	11 ERICKSON G offensive rebound (7)			
02:30	11 ERICKSON G 2pt FG second chance in the paint, layup missed			
02:28				21 SWANSON S defensive rebound (6)
02:17		35-36	-1	4 WIEKER E 2pt FG outside the paint, jump shot made (5)
02:17				21 SWANSON S assist (1)
02:05	11 ERICKSON G 2pt FG in the paint, layup missed			
02:01	0 TECLEMARIAM M offensive rebound (3)			
02:00	0 TECLEMARIAM M foul drawn (2)			32 GUSE J foul shooting (1 - 4)
02:00	0 TECLEMARIAM M free throw 1 - 2 made (6)	36-36	0	
02:00	11 ERICKSON G substitution out			
02:00	25 BAILEY J substitution in			
02:00				3 SCHOMMER J substitution out
02:00				4 WIEKER E substitution out
02:00				32 GUSE J substitution out
02:00				1 KIENITZ B substitution in
02:00				15 OLSON W substitution in
02:00				22 BIEWEN A substitution in
02:00	0 TECLEMARIAM M free throw 2 - 2 made (7)	37-36	1	
01:48		37-38	-1	21 SWANSON S 2pt FG in the paint, layup made (8)



Official Basketball Play by Play - First Half
Gust. Adolphus at Puget Sound
 12/28/22 Memorial Fieldhouse, Tacoma
 2022-23 Men's Basketball

Game Time: 6:00 PM
Game Duration: 1:45
Attendance: 200

Officials:

Game Time	UPS	Score	Diff	GST
01:30	20 POHLAND W 2pt FG in the paint, layup made (9)	39-38	1	
01:30	12 PHILLIPS T assist (6)			
01:21				22 BIEWEN A 2pt FG in the paint, layup missed
01:17	20 POHLAND W defensive rebound (1)			
01:15	0 TECLEMARIAM M foul drawn (3)			1 KIENITZ B foul shooting (2 - 5)
01:15	0 TECLEMARIAM M free throw fast break 1 - 2 made (8)	40-38	2	
01:15	0 TECLEMARIAM M free throw fast break 2 - 2 missed			
01:13	25 BAILEY J offensive rebound (1)			
01:11	25 BAILEY J turnover bad pass (1)			22 BIEWEN A steal (1)
00:59		40-41	-1	1 KIENITZ B 3pt FG from turnover, jump shot made (3)
00:59				15 OLSON W assist (1)
00:45	0 TECLEMARIAM M 2pt FG in the paint, layup missed			
00:40				21 SWANSON S defensive rebound (7)
00:37				21 SWANSON S 2pt FG in the paint, layup missed
00:32				15 OLSON W offensive rebound (2)
00:32		40-43	-3	15 OLSON W 2pt FG second chance in the paint, layup made (6)
00:05	25 BAILEY J 2pt FG in the paint, layup blocked			
00:05				21 SWANSON S block (1)
00:00				15 OLSON W defensive rebound (3)
END OF PERIOD				
UPS 40-43 GST				



Official Basketball Box Score - First Half
Gust. Adolphus at Puget Sound
 12/28/22 Memorial Fieldhouse, Tacoma
 2022-23 Men's Basketball

Game Time: 6:00 PM
 Game Duration: 1:45
 Attendance: 200

Officials:

Gust. Adolphus - 43

NO.	Name	F	Min	FG			Rebounds			Fouls		TP	AS	TO	ST	Blocks		+/-
				M-A	M-A	M-A	OR	DR	TOT	PF	FD					BS	BA	
4	Evan Wieker	F	11:44	2-3	1-1	0-0	0	1	1	0	1	5	0	0	0	0	0	6
21	Spencer Swanson	F	14:55	3-10	1-1	1-2	1	6	7	1	2	8	1	1	1	1	1	1
22	Adam Biewen	F	15:14	4-8	0-1	1-1	2	1	3	0	1	9	1	0	1	0	0	-2
32	Jake Guse	C	09:42	3-4	0-0	1-2	1	1	2	1	1	7	1	0	0	0	0	5
3	Jordan Schommer	G	12:14	1-3	1-3	2-2	0	1	1	1	1	5	1	1	0	0	0	10
1	Brady Kienitz		10:27	1-3	1-3	0-0	1	0	1	2	0	3	0	0	0	0	0	-1
2	Cam Anderson		07:15	0-2	0-0	0-0	0	1	1	0	1	0	0	0	0	0	0	-8
23	Dawson Kellen		04:21	0-1	0-0	0-0	0	0	0	0	0	0	0	1	0	0	0	-11
11	Carson Koch		07:31	0-0	0-0	0-0	0	1	1	0	0	0	1	0	0	0	0	6
15	Wyatt Olson		06:37	3-5	0-0	0-0	1	2	3	0	0	6	1	0	0	0	0	9
Team							0	2	2			0		0				
Totals				17-39	4-9	5-7	6	16	22	5	7	43	6	3	2	1	1	3

Shooting By Period		
1st FG%	17-39	43.6%
3PT%	4-9	44.4%
FT%	5-7	71.4%
GM FG%	17-39	43.6%
3PT%	4-9	44.4%
FT%	5-7	71.4%

Dead Ball Rebounds: 1, 0

Technical Fouls::NONE

Puget Sound - 40

NO.	Name	F	Min	FG			Rebounds			Fouls		TP	AS	TO	ST	Blocks		+/-
				M-A	M-A	M-A	OR	DR	TOT	PF	FD					BS	BA	
0	Mussie Teclemariam	F	14:25	2-5	1-3	3-4	2	1	3	0	3	8	0	2	0	0	0	-5
11	Grant Erickson	F	13:50	2-4	0-0	0-0	1	6	7	2	1	4	3	1	0	0	0	-1
12	Taj Phillips	G	14:21	0-3	0-0	0-0	0	3	3	2	0	0	6	1	1	0	0	-6
13	Liam Ruttledge	G	15:57	4-8	2-5	0-0	0	0	0	0	0	10	1	0	0	0	0	-6
20	Will Pohland	G	15:46	4-6	1-2	0-0	0	1	1	0	0	9	0	0	1	0	0	-6
1	Drew Gillette		09:06	3-5	1-2	0-0	0	1	1	0	0	7	1	1	0	0	0	4
2	Dezman Baker		06:49	1-1	0-0	0-0	0	3	3	2	0	2	1	0	0	1	0	10
25	Jack Bailey		04:31	0-1	0-0	0-0	1	0	1	1	0	0	1	1	0	0	1	3
33	Charlie DeBoer		02:50	0-2	0-1	0-0	0	0	0	0	0	0	0	0	0	0	0	-7
21	Zac Claus		02:25	0-0	0-0	0-0	0	1	1	0	1	0	0	0	0	0	0	-1
Team							0	0	0			0		0				
Totals				16-35	5-13	3-4	4	16	20	7	5	40	13	6	2	1	1	-3

Shooting By Period		
1st FG%	16-35	45.7%
3PT%	5-13	38.5%
FT%	3-4	75%
GM FG%	16-35	45.7%
3PT%	5-13	38.5%
FT%	3-4	75.0%

Dead Ball Rebounds: 0, 1

Technical Fouls::NONE

	GST	UPS
Biggest lead	4 (1st 18:52)	12 (1st 11:59)
Best Scoring Run	8 (1st 7:18)	13 (1st 12:45)
Lead Changes	8	
Times Tied	4	
Time with Lead	03:32	14:21

Points from	GST	UPS
Turnovers	11	6
Paint	18	16
Second Chance	10	2
Fast Breaks	0	5
Bench	9	9

Period by Period Scoring			
	1st	2nd	TOT
GST	43	33	76
UPS	40	37	77



Officials:

Period 2

Quarter Starters:

UPS	0 Teclemariam M	11 Erickson G	12 Phillips T	13 Rutledge L	20 Pohland W
GST	3 Schommer J	4 Wieker E	21 Swanson S	22 Biewen A	32 Guse J

Game Time	UPS	Score	Diff	GST
20:00	25 BAILEY J substitution out			
20:00	11 ERICKSON G substitution in			
20:00				1 KIENITZ B substitution out
20:00				11 KOCH C substitution out
20:00				15 OLSON W substitution out
20:00				3 SCHOMMER J substitution in
20:00				4 WIEKER E substitution in
20:00				32 GUSE J substitution in
19:52				3 SCHOMMER J turnover lost ball (2)
19:25	20 POHLAND W 3pt FG from turnover, jump shot missed			
19:22				32 GUSE J defensive rebound (3)
19:05		40-45	-5	21 SWANSON S 2pt FG in the paint, layup made (10)
18:46	0 TECLEMARIAM M foul drawn (4)			22 BIEWEN A foul shooting (1 - 1)
18:46	0 TECLEMARIAM M free throw 1 - 2 made (9)	41-45	-4	
18:46	0 TECLEMARIAM M free throw 2 - 2 made (10)	42-45	-3	
18:36		42-48	-6	21 SWANSON S 3pt FG , jump shot made (13)
18:36				4 WIEKER E assist (1)
18:21	13 RUTLEDGE L 2pt FG in the paint, layup blocked			
18:21				32 GUSE J block (1)
18:15				32 GUSE J defensive rebound (4)
18:14	11 ERICKSON G foul shooting (3 - 1)			32 GUSE J foul drawn (2)
18:14				32 GUSE J free throw fast break 1 - 2 missed
18:14				offensive dead ball rebound (2)
18:14		42-49	-7	32 GUSE J free throw fast break 2 - 2 made (8)
18:02	0 TECLEMARIAM M 2pt FG in the paint, layup missed			
17:59				21 SWANSON S defensive rebound (8)
17:49	13 RUTLEDGE L steal (1)			4 WIEKER E turnover lost ball (1)
17:49	20 POHLAND W substitution out			
17:49	2 BAKER D substitution in			
17:30	12 PHILLIPS T 2pt FG from turnover in the paint, layup missed			
17:27				21 SWANSON S defensive rebound (9)
17:27	12 PHILLIPS T foul personal (3 - 2)			21 SWANSON S foul drawn (3)
17:27	12 PHILLIPS T substitution out			
17:27	1 GILLETTE D substitution in			
17:12				3 SCHOMMER J 3pt FG , jump shot missed
17:09	0 TECLEMARIAM M defensive rebound (4)			
17:07	0 TECLEMARIAM M turnover bad pass (3)			22 BIEWEN A steal (2)
17:04		42-51	-9	21 SWANSON S 2pt FG fast break from turnover in the paint, layup made (15)
17:04				22 BIEWEN A assist (2)
17:04	0 TECLEMARIAM M foul shooting (1 - 3)			21 SWANSON S foul drawn (4)
17:04	0 TECLEMARIAM M substitution out			
17:04	33 DEBOER C substitution in			



Gust. Adolphus at Puget Sound

12/28/22 Memorial Fieldhouse, Tacoma
2022-23 Men's Basketball

Game Time: 6:00 PM
Game Duration: 1:45
Attendance: 200

Officials:

Game Time	UPS	Score	Diff	GST
17:04		42-52	-10	21 SWANSON S free throw fast break 1 - 1 made (16)
16:45	11 ERICKSON G 2pt FG in the paint, layup blocked			
16:45				32 GUSE J block (2)
16:40				defensive rebound (27)
16:40	Timeout 30 Sec			
16:31				32 GUSE J turnover bad pass (1)
16:19	1 GILLETTE D 3pt FG from turnover, jump shot missed			
16:16	33 DEBOER C offensive rebound (1)			
16:00	11 ERICKSON G turnover lost ball (2)			21 SWANSON S steal (2)
15:41				32 GUSE J 2pt FG from turnover in the paint, jump shot missed
15:36	33 DEBOER C defensive rebound (2)			
15:31	13 RUTTLEDGE L 3pt FG , jump shot missed			
15:27				22 BIEWEN A defensive rebound (4)
15:25	1 GILLETTE D steal (1)			22 BIEWEN A turnover lost ball (1)
15:06	33 DEBOER C 2pt FG from turnover in the paint, layup blocked			
15:06				4 WIEKER E block (1)
15:00				22 BIEWEN A defensive rebound (5)
14:59	11 ERICKSON G foul drawn (2)			22 BIEWEN A foul offensive (2 - 2)
14:59				22 BIEWEN A turnover offensive (2)
14:59	Timeout media			
14:59	11 ERICKSON G substitution out			
14:59	13 RUTTLEDGE L substitution out			
14:59	0 TECLEMARIAM M substitution in			
14:59	20 POHLAND W substitution in			
14:59				3 SCHOMMER J substitution out
14:59				4 WIEKER E substitution out
14:59				32 GUSE J substitution out
14:59				1 KIENITZ B substitution in
14:59				2 ANDERSON C substitution in
14:59				15 OLSON W substitution in
14:44	1 GILLETTE D 3pt FG from turnover, jump shot missed			
14:41				22 BIEWEN A defensive rebound (6)
14:30		42-54	-12	21 SWANSON S 2pt FG in the paint, layup made (18)
14:05	0 TECLEMARIAM M 2pt FG in the paint, layup made (12)	44-54	-10	
13:55				22 BIEWEN A turnover travel (3)
13:31	0 TECLEMARIAM M 2pt FG from turnover in the paint, layup made (14)	46-54	-8	
13:31	1 GILLETTE D assist (2)			
13:06				15 OLSON W 2pt FG outside the paint, jump shot missed
13:03	33 DEBOER C defensive rebound (3)			
12:58	20 POHLAND W foul drawn (1)			2 ANDERSON C foul personal (1 - 3)
12:58				21 SWANSON S substitution out
12:58				22 BIEWEN A substitution out
12:58				4 WIEKER E substitution in
12:58				23 KELLEN D substitution in
12:39	2 BAKER D 3pt FG , jump shot made (5)	49-54	-5	
12:39	0 TECLEMARIAM M assist (1)			
12:28				23 KELLEN D 2pt FG outside the paint, jump shot blocked
12:28	2 BAKER D block (2)			

**Gust. Adolphus at Puget Sound**12/28/22 Memorial Fieldhouse, Tacoma
2022-23 Men's Basketball

Officials:

Game Time	UPS	Score	Diff	GST
12:22	0 TECLEMARIAM M defensive rebound (5)			
12:09	33 DEBOER C 3pt FG , jump shot made (3)	52-54	-2	
12:09	1 GILLETTE D assist (3)			
11:53				2 ANDERSON C 2pt FG in the paint, jump shot missed
11:48				4 WIEKER E offensive rebound (2)
11:47	2 BAKER D foul shooting (3 - 4)			4 WIEKER E foul drawn (2)
11:47	Timeout media			
11:47	1 GILLETTE D substitution out			
11:47	12 PHILLIPS T substitution in			
11:47				4 WIEKER E free throw 1 - 2 missed
11:47				offensive dead ball rebound (3)
11:47		52-55	-3	4 WIEKER E free throw 2 - 2 made (6)
11:30	12 PHILLIPS T 2pt FG in the paint, layup missed			
11:27				4 WIEKER E defensive rebound (3)
11:19	0 TECLEMARIAM M steal (1)			15 OLSON W turnover lost ball (1)
11:13	0 TECLEMARIAM M 2pt FG from turnover in the paint, layup missed			
11:10				15 OLSON W defensive rebound (4)
10:59		52-57	-5	1 KIENITZ B 2pt FG outside the paint, jump shot made (5)
10:38	33 DEBOER C 3pt FG , jump shot missed			
10:36				15 OLSON W defensive rebound (5)
10:29				2 ANDERSON C turnover travel (1)
10:29	0 TECLEMARIAM M substitution out			
10:29	33 DEBOER C substitution out			
10:29	11 ERICKSON G substitution in			
10:29	13 RUTTLEDGE L substitution in			
10:29				2 ANDERSON C substitution out
10:29				15 OLSON W substitution out
10:29				21 SWANSON S substitution in
10:29				22 BIEWEN A substitution in
10:09	20 POHLAND W 2pt FG from turnover in the paint, layup missed			
10:04	11 ERICKSON G offensive rebound (8)			
10:04	11 ERICKSON G 2pt FG from turnover second chance in the paint, layup made (6)	54-57	-3	
10:00	20 POHLAND W foul drawn (2)			23 KELLEN D foul offensive (1 - 4)
10:00				23 KELLEN D turnover offensive (2)
10:00				1 KIENITZ B substitution out
10:00				23 KELLEN D substitution out
10:00				3 SCHOMMER J substitution in
10:00				32 GUSE J substitution in
09:35	12 PHILLIPS T 2pt FG from turnover in the paint, layup missed			
09:30	11 ERICKSON G offensive rebound (9)			
09:30	11 ERICKSON G 2pt FG from turnover second chance in the paint, layup made (8)	56-57	-1	
09:16		56-59	-3	3 SCHOMMER J 2pt FG outside the paint, jump shot made (7)
08:59	11 ERICKSON G 2pt FG outside the paint, jump shot made (10)	58-59	-1	
08:59	20 POHLAND W assist (1)			
08:42				4 WIEKER E 2pt FG outside the paint, jump shot missed
08:39	11 ERICKSON G defensive rebound (10)			
08:33	12 PHILLIPS T 2pt FG in the paint, layup made (2)	60-59	1	

**Gust. Adolphus at Puget Sound**12/28/22 Memorial Fieldhouse, Tacoma
2022-23 Men's Basketball

Officials:

Game Time	UPS	Score	Diff	GST
08:12		60-61	-1	3 SCHOMMER J 2pt FG in the paint, jump shot made (9)
08:12				21 SWANSON S assist (2)
07:49	2 BAKER D 3pt FG , jump shot made (8)	63-61	2	
07:49	11 ERICKSON G assist (4)			
07:36	12 PHILLIPS T foul personal (4 - 5)			3 SCHOMMER J foul drawn (2)
07:36	Timeout media			
07:36	2 BAKER D substitution out			
07:36	12 PHILLIPS T substitution out			
07:36	0 TECLEMARIAM M substitution in			
07:36	1 GILLETTE D substitution in			
07:36				4 WIEKER E substitution out
07:36				11 KOCH C substitution in
07:19				3 SCHOMMER J 2pt FG in the paint, jump shot missed
07:17				11 KOCH C offensive rebound (2)
07:17	0 TECLEMARIAM M foul shooting (2 - 6)			11 KOCH C foul drawn (1)
07:17				11 KOCH C free throw 1 - 2 missed
07:17				offensive dead ball rebound (4)
07:17	20 POHLAND W substitution out			
07:17	2 BAKER D substitution in			
07:17		63-62	1	11 KOCH C free throw 2 - 2 made (1)
06:57	13 RUTTLEDGE L 2pt FG in the paint, layup missed			
06:54	11 ERICKSON G offensive rebound (11)			
06:51	13 RUTTLEDGE L 3pt FG second chance, jump shot missed			
06:48				22 BIEWEN A defensive rebound (7)
06:48	11 ERICKSON G foul personal (4 - 7)			22 BIEWEN A foul drawn (2)
06:48	11 ERICKSON G substitution out			
06:48	33 DEBOER C substitution in			
06:47				22 BIEWEN A 1&1 free throw 1 missed
06:45	0 TECLEMARIAM M defensive rebound (6)			
06:29	0 TECLEMARIAM M turnover bad pass (4)			22 BIEWEN A steal (3)
06:18				32 GUSE J 2pt FG from turnover in the paint, jump shot missed
06:12				22 BIEWEN A offensive rebound (8)
06:10				21 SWANSON S 2pt FG from turnover second chance in the paint, jump shot missed
06:05	33 DEBOER C defensive rebound (4)			
06:05	1 GILLETTE D foul drawn (1)			3 SCHOMMER J foul shooting (2 - 5)
06:05	1 GILLETTE D free throw 1 - 2 made (8)	64-62	2	
06:05				32 GUSE J substitution out
06:05				15 OLSON W substitution in
06:05	1 GILLETTE D free throw 2 - 2 made (9)	65-62	3	
06:00				21 SWANSON S 3pt FG , jump shot missed
05:57				22 BIEWEN A offensive rebound (9)
05:46		65-65	0	15 OLSON W 3pt FG second chance, jump shot made (9)
05:46				3 SCHOMMER J assist (2)
05:37	1 GILLETTE D foul drawn (2)			3 SCHOMMER J foul shooting (3 - 6)
05:37	1 GILLETTE D free throw 1 - 2 made (10)	66-65	1	
05:37				3 SCHOMMER J substitution out
05:37				11 KOCH C substitution out
05:37				1 KIENITZ B substitution in



Gust. Adolphus at Puget Sound

12/28/22 Memorial Fieldhouse, Tacoma
2022-23 Men's Basketball

Game Time: 6:00 PM
Game Duration: 1:45
Attendance: 200

Officials:

Game Time	UPS	Score	Diff	GST
05:37				4 WIEKER E substitution in
05:37	1 GILLETTE D free throw 2 - 2 made (11)	67-65	2	
05:37	13 RUTTLEDGE L substitution out			
05:37	20 POHLAND W substitution in			
05:24	2 BAKER D foul personal (4 - 8)			22 BIEWEN A foul drawn (3)
05:24				22 BIEWEN A 1&1 free throw 1 missed
05:21				21 SWANSON S offensive rebound (10)
05:19				21 SWANSON S 2pt FG second chance in the paint, layup blocked
05:19	33 DEBOER C block (1)			
05:19				21 SWANSON S offensive rebound (11)
05:19		67-67	0	21 SWANSON S 2pt FG second chance in the paint, layup made (20)
04:56	33 DEBOER C 3pt FG , jump shot made (6)	70-67	3	
04:56	20 POHLAND W assist (2)			
04:37				15 OLSON W 2pt FG in the paint, jump shot missed
04:32	1 GILLETTE D defensive rebound (2)			
04:20	2 BAKER D 2pt FG in the paint, layup made (10)	72-67	5	
04:06		72-69	3	15 OLSON W 2pt FG in the paint, layup made (11)
04:06				21 SWANSON S assist (3)
04:06	0 TECLEMARIAM M foul shooting (3 - 9)			15 OLSON W foul drawn (1)
04:06	1 GILLETTE D substitution out			
04:06	33 DEBOER C substitution out			
04:06	11 ERICKSON G substitution in			
04:06	12 PHILLIPS T substitution in			
04:06		72-70	2	15 OLSON W free throw 1 - 1 made (12)
04:06				15 OLSON W substitution out
04:06				32 GUSE J substitution in
03:47	2 BAKER D 2pt FG in the paint, jump shot made (12)	74-70	4	
03:34		74-72	2	22 BIEWEN A 2pt FG in the paint, layup made (11)
03:11	20 POHLAND W 3pt FG , jump shot missed			
03:09				32 GUSE J defensive rebound (5)
03:01				1 KIENITZ B 3pt FG , jump shot missed
03:00	11 ERICKSON G defensive rebound (12)			
03:00	11 ERICKSON G foul drawn (3)			4 WIEKER E foul personal (1 - 7)
03:00	Timeout media			
03:00	12 PHILLIPS T substitution out			
03:00	13 RUTTLEDGE L substitution in			
03:00				1 KIENITZ B substitution out
03:00				3 SCHOMMER J substitution in
03:00	20 POHLAND W 1&1 free throw 1 missed			
02:58				21 SWANSON S defensive rebound (12)
02:40				4 WIEKER E 2pt FG in the paint, layup missed
02:30				32 GUSE J offensive rebound (6)
02:30		74-74	0	32 GUSE J 2pt FG second chance in the paint, layup made (10)
02:11	13 RUTTLEDGE L 2pt FG outside the paint, jump shot missed			
02:08				4 WIEKER E defensive rebound (4)
02:01	20 POHLAND W foul personal (1 - 10)			4 WIEKER E foul drawn (3)
02:00				4 WIEKER E free throw 1 - 2 missed
02:00				offensive dead ball rebound (5)



Gust. Adolphus at Puget Sound

12/28/22 Memorial Fieldhouse, Tacoma
2022-23 Men's Basketball

Game Time: 6:00 PM
Game Duration: 1:45
Attendance: 200

Officials:

Game Time	UPS	Score	Diff	GST
02:00	11 ERICKSON G substitution out			
02:00	12 PHILLIPS T substitution in			
02:00		74-75	-1	4 WIEKER E free throw 2 - 2 made (7)
01:40	13 RUTTLEDGE L turnover bad pass (1)			32 GUSE J steal (1)
01:15	0 TECLEMARIAM M foul drawn (5)			21 SWANSON S foul personal (2 - 8)
01:15	0 TECLEMARIAM M free throw 1 - 1 missed			
01:15				15 OLSON W defensive rebound (6)
00:49				21 SWANSON S 3pt FG , jump shot missed
00:49				offensive rebound (46)
00:49	20 POHLAND W foul personal (2 - 11)			22 BIEWEN A foul drawn (4)
00:49	20 POHLAND W substitution out			
00:49	1 GILLETTE D substitution in			
00:49		74-76	-2	4 WIEKER E free throw fast break 1 - 2 made (8)
00:49				4 WIEKER E free throw fast break 2 - 2 missed
00:46	2 BAKER D defensive rebound (4)			
00:32	12 PHILLIPS T 2pt FG in the paint, layup missed			
00:29	2 BAKER D offensive rebound (5)			
00:29	2 BAKER D 2pt FG second chance in the paint, layup missed			
00:29	0 TECLEMARIAM M offensive rebound (7)			
00:29	0 TECLEMARIAM M 2pt FG second chance in the paint, layup made (16)	76-76	0	
00:29	0 TECLEMARIAM M foul drawn (6)			4 WIEKER E foul shooting (2 - 9)
00:29	1 GILLETTE D substitution out			
00:29	12 PHILLIPS T substitution out			
00:29	11 ERICKSON G substitution in			
00:29	20 POHLAND W substitution in			
00:29				32 GUSE J substitution out
00:29				15 OLSON W substitution in
00:29	0 TECLEMARIAM M free throw 1 - 1 made (17)	77-76	1	
00:12				Timeout 30 Sec
00:06				3 SCHOMMER J 2pt FG in the paint, jump shot missed
00:00				15 OLSON W offensive rebound (7)
00:01				15 OLSON W 2pt FG second chance in the paint, jump shot missed
00:01	defensive rebound (37)			
END OF GAME				
UPS 77-76 GST				



Official Basketball Box Score - Second Half
Gust. Adolphus at Puget Sound
 12/28/22 Memorial Fieldhouse, Tacoma
 2022-23 Men's Basketball

Game Time: 6:00 PM
 Game Duration: 1:45
 Attendance: 200

Officials:

Gust. Adolphus - 33

NO.	Name	F	Min	FG			3P			FT			Rebounds			Fouls		TP	AS	TO	ST	Blocks		+/-
				M-A	M-A	M-A	OR	DR	TOT	PF	FD	BS	BA											
4	Evan Wieker	F	16:00	0-2	0-0	3-6	1	2	3	2	2	3	1	1	1	0	1	0	1	0	0	-3		
21	Spencer Swanson	F	17:31	5-9	1-3	1-1	2	3	5	1	2	12	2	0	1	0	1	0	1	0	1	-1		
22	Adam Biewen	F	17:31	1-1	0-0	0-2	2	4	6	2	3	2	1	3	2	0	0	0	0	0	-1			
32	Jake Guse	C	12:33	1-3	0-0	1-2	1	3	4	0	1	3	0	1	1	1	2	0	0	4	4			
3	Jordan Schommer	G	12:24	2-5	0-1	0-0	0	0	0	2	1	4	1	1	1	0	0	0	0	4	4			
1	Brady Kienitz		07:36	1-2	0-1	0-0	0	0	0	0	0	2	0	0	0	0	0	0	0	0	-8			
2	Cam Anderson		04:30	0-1	0-0	0-0	0	0	0	1	0	0	0	1	0	0	0	0	0	-5				
15	Wyatt Olson		06:58	2-5	1-1	1-1	1	3	4	0	1	6	0	1	0	0	0	0	-6					
23	Dawson Kellen		02:58	0-1	0-0	0-0	0	0	0	1	0	0	0	1	0	0	1	0	0	-5				
11	Carson Koch		01:59	0-0	0-0	1-2	1	0	1	0	1	1	0	0	0	0	0	0	1					
Team							1	1	2			0		0										
Totals				12-29	2-6	7-14	9	16	25	9	11	33	5	9	4	3	2	-4						

Shooting By Period		
2nd FG%	12-29	41.4%
3PT%	2-6	33.3%
FT%	7-14	50%
GM FG%	12-29	41.4%
3PT%	2-6	33.3%
FT%	7-14	50.0%

Dead Ball Rebounds: 4, 0

Technical Fouls::NONE

Puget Sound - 37

NO.	Name	F	Min	FG			3P			FT			Rebounds			Fouls		TP	AS	TO	ST	Blocks		+/-
				M-A	M-A	M-A	OR	DR	TOT	PF	FD	BS	BA											
0	Mussie Teclemariam	F	15:02	3-5	0-0	3-4	1	3	4	3	3	9	1	2	1	0	0	2	1	0	0	-2		
11	Grant Erickson	F	11:17	3-4	0-0	0-0	3	2	5	2	2	6	1	1	0	0	1	0	0	1	-3			
12	Taj Phillips	G	09:21	1-5	0-0	0-0	0	0	0	2	0	2	0	0	0	0	0	0	0	-1				
13	Liam Ruttledge	G	12:53	0-5	0-2	0-0	0	0	0	0	0	0	0	1	1	0	1	0	1	-1				
20	Will Pohland	G	15:09	0-3	0-2	0-1	0	0	0	2	2	0	2	0	0	0	0	0	0	6				
25	Jack Bailey		00:00	0-0	0-0	0-0	0	0	0	0	0	0	0	0	0	0	0	0	0	0				
2	Dezman Baker		17:30	4-5	2-2	0-0	1	1	2	2	0	10	0	0	0	1	0	8						
1	Drew Gillette		09:31	0-2	0-2	4-4	0	1	1	0	2	4	2	0	1	0	0	7						
33	Charlie DeBoer		09:17	2-4	2-3	0-0	1	3	4	0	0	6	0	0	0	1	1	6						
Team							0	1	1			0		0										
Totals				13-33	4-11	7-9	6	11	17	11	9	37	6	4	3	2	3	4						

Shooting By Period		
2nd FG%	13-33	39.4%
3PT%	4-11	36.4%
FT%	7-9	77.8%
GM FG%	13-33	39.4%
3PT%	4-11	36.4%
FT%	7-9	77.8%

Dead Ball Rebounds: 0, 0

Technical Fouls::NONE

	GST	UPS
Biggest lead	12 (2 nd 14:30)	5 (2 nd 4:20)
Best Scoring Run	9(2 nd 14:30)	10(2 nd 12:09)
Lead Changes	5	
Times Tied	4	
Time with Lead	12:46	05:37

	GST	UPS
Points from		
Turnovers	3	6
Paint	16	16
Second Chance	10	7
Fast Breaks	5	0
Bench	9	20

	Period by Period Scoring		
	1st	2nd	TOT
GST	43	33	76
UPS	40	37	77



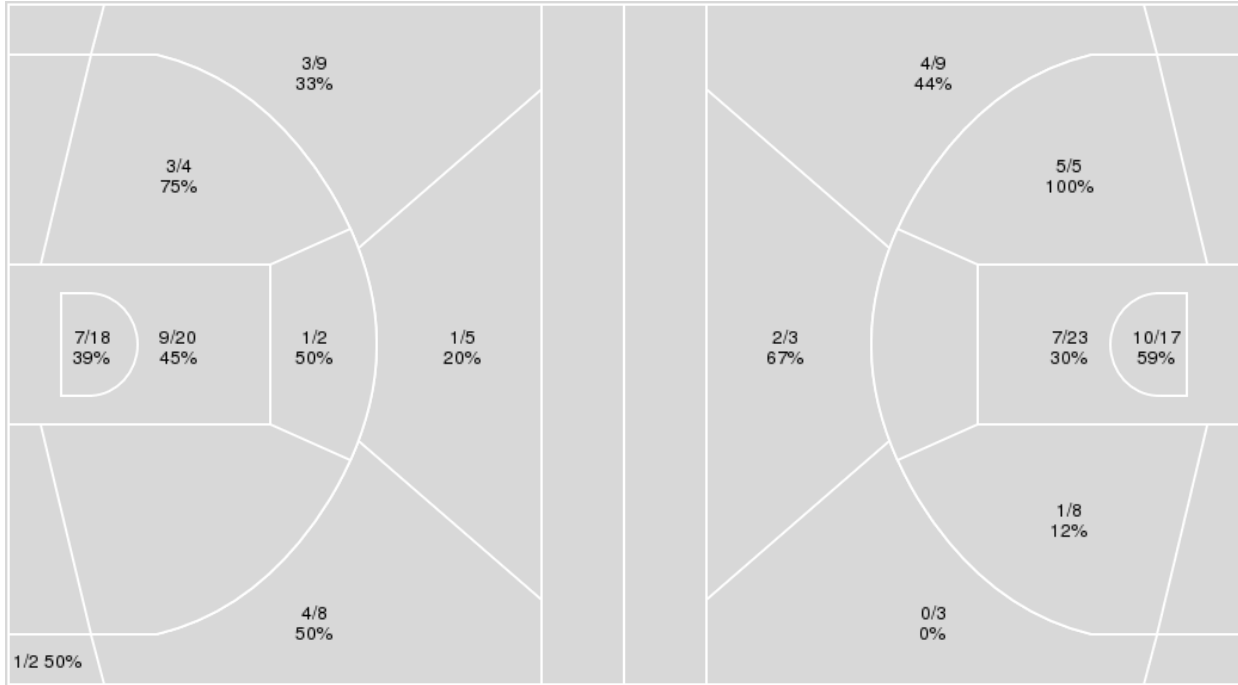
Officials:

{ Players => All; } FG Types => All; Results => All;

{ Players => All; } FG Types => All; Results => All;

Puget Sound

Gust. Adolphus



Puget Sound	M/A	%
Field Goals	29/68	43
2 Points	20/44	45
3 Points	9/24	38
Free Throws	10/13	77

Gust. Adolphus	M/A	%
Field Goals	29/68	43
2 Points	23/53	43
3 Points	6/15	40
Free Throws	12/21	57



Gust. Adolphus at Puget Sound

12/28/22 Memorial Fieldhouse, Tacoma
2022-23 Men's Basketball

Game Time: 6:00 PM
Game Duration: 1:45
Attendance: 200

Officials:

Gust. Adolphus

No	Name	Mins		Score		Points Diff		Points per Min		Assists		Rebounds		Steals		Turnovers	
		On	Off	On	Off	On	Off	On	Off	On	Off	On	Off	On	Off	On	Off
1	Brady Kienitz	18:03	21:57	33 - 42	43 - 35	-9	8	1.83	1.96	4	7	21	26	1	5	6	6
2	Cam Anderson	11:45	28:15	12 - 25	64 - 52	-13	12	1.02	2.27	1	10	13	34	0	6	5	7
3	Jordan Schommer	24:38	15:22	54 - 40	22 - 37	14	-15	2.19	1.43	8	3	29	18	5	1	6	6
4	Evan Wieker	27:44	12:16	56 - 53	20 - 24	3	-4	2.02	1.63	8	3	31	16	4	2	9	3
11	Carson Koch	09:30	30:30	24 - 17	52 - 60	7	-8	2.53	1.70	4	7	12	35	2	4	0	12
15	Wyatt Olson	13:35	26:25	30 - 27	46 - 50	3	-4	2.21	1.74	4	7	19	28	1	5	3	9
21	Spencer Swanson	32:26	07:34	62 - 62	14 - 15	0	-1	1.91	1.85	10	1	39	8	6	0	10	2
22	Adam Biewen	32:45	07:15	60 - 63	16 - 14	-3	2	1.83	2.21	9	2	38	9	6	0	10	2
23	Dawson Kellen	07:19	32:41	3 - 19	73 - 58	-16	15	0.41	2.23	0	11	9	38	0	6	5	7
32	Jake Guse	22:15	17:45	46 - 37	30 - 40	9	-10	2.07	1.69	7	4	24	23	5	1	6	6

Puget Sound

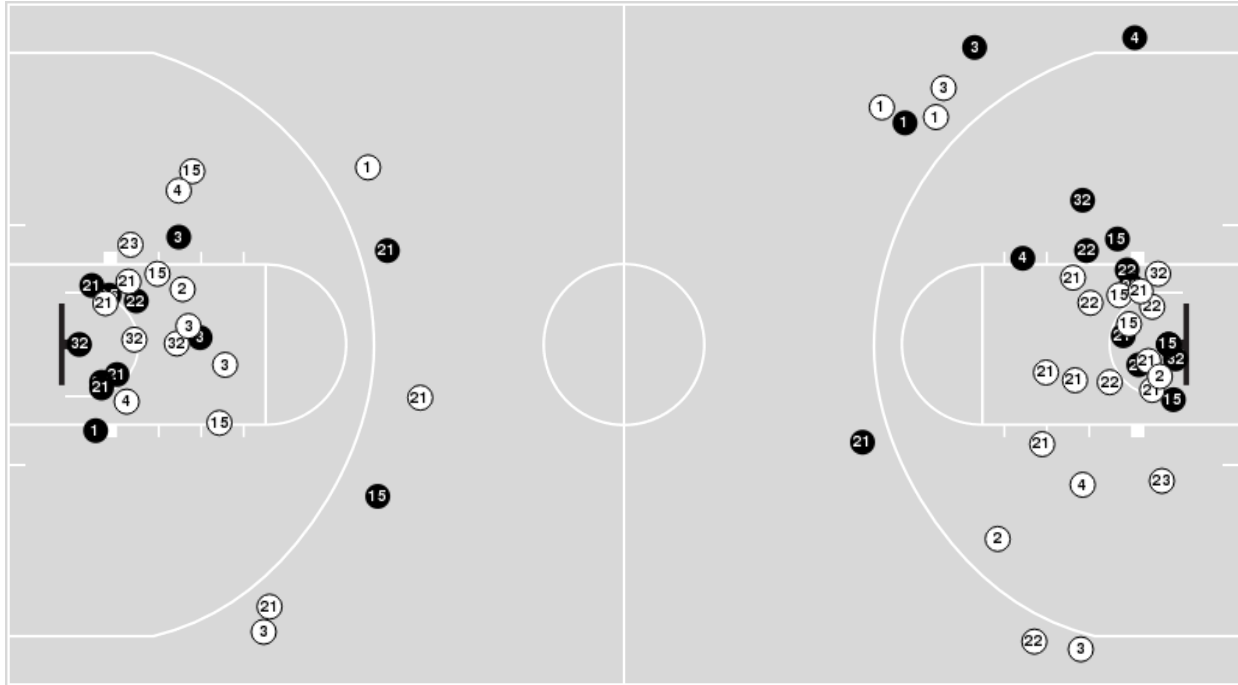
No	Name	Mins		Score		Points Diff		Points per Min		Assists		Rebounds		Steals		Turnovers	
		On	Off	On	Off	On	Off	On	Off	On	Off	On	Off	On	Off	On	Off
0	Mussie Teclemariam	29:27	10:33	52 - 59	25 - 17	-7	8	1.77	2.37	13	6	27	10	4	1	9	1
1	Drew Gillette	18:37	21:23	41 - 30	36 - 46	11	-10	2.20	1.68	10	9	19	18	2	3	5	5
2	Dezman Baker	24:19	15:41	51 - 33	26 - 43	18	-17	2.10	1.66	11	8	26	11	3	2	5	5
11	Grant Erickson	25:07	14:53	46 - 50	31 - 26	-4	5	1.83	2.08	12	7	22	15	3	2	5	5
12	Taj Phillips	23:42	16:18	47 - 54	30 - 22	-7	8	1.98	1.84	12	7	24	13	3	2	6	4
13	Liam Ruttledge	28:50	11:10	54 - 61	23 - 15	-7	8	1.87	2.06	13	6	28	9	3	2	8	2
20	Will Pohland	30:55	09:05	59 - 59	18 - 17	0	1	1.91	1.98	15	4	23	14	4	1	6	4
21	Zac Claus	02:25	37:35	4 - 5	73 - 71	-1	2	1.66	1.94	1	18	1	36	0	5	0	10
25	Jack Bailey	04:31	35:29	10 - 7	67 - 69	3	-2	2.21	1.89	3	16	4	33	1	4	1	9
33	Charlie DeBoer	12:07	27:53	21 - 22	56 - 54	-1	2	1.73	2.01	5	14	11	26	2	3	5	5



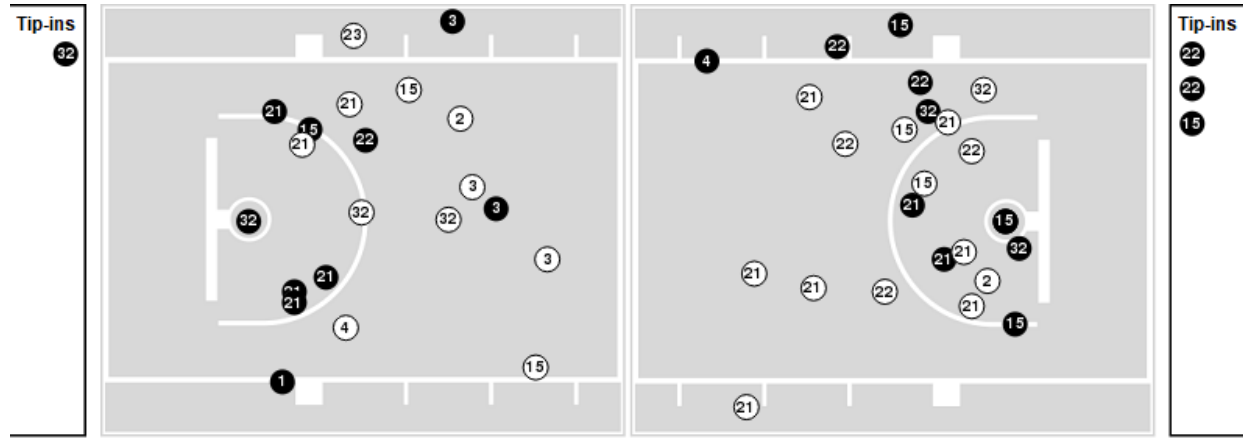
Officials:

Players => AllFG Types=>AllResults=>All
Gust. Adolphus

All Field Goals



Blow Up Chart



● Made ○ Missed N - Player Number

Gust. Adolphus	M/A	%
Field Goals	29/68	43
2 Points	23/53	43
3 Points	6/15	40
Free Throws	12/21	57

Gust. Adolphus	M/A	%
Points in the Paint	34 (17 / 40)	43
Fast Break Points	5 (4/7)	57
Second Chance Points	20 (11/17)	65
Effective FG%	47	

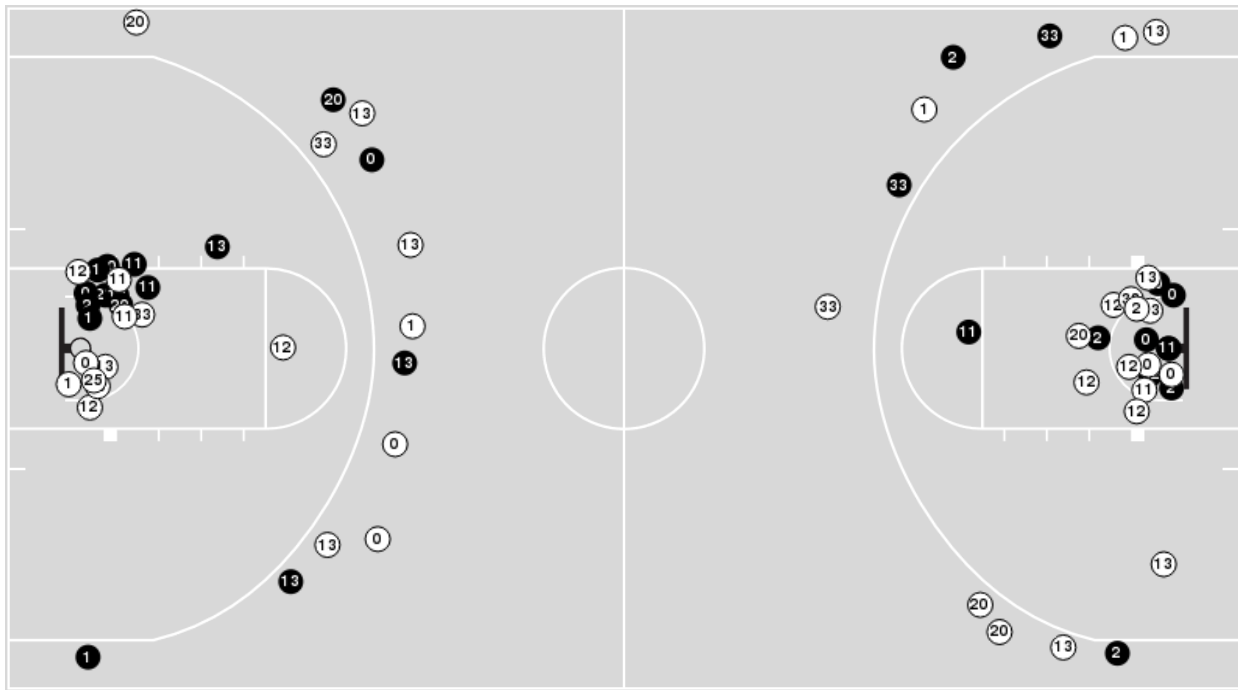


Officials:

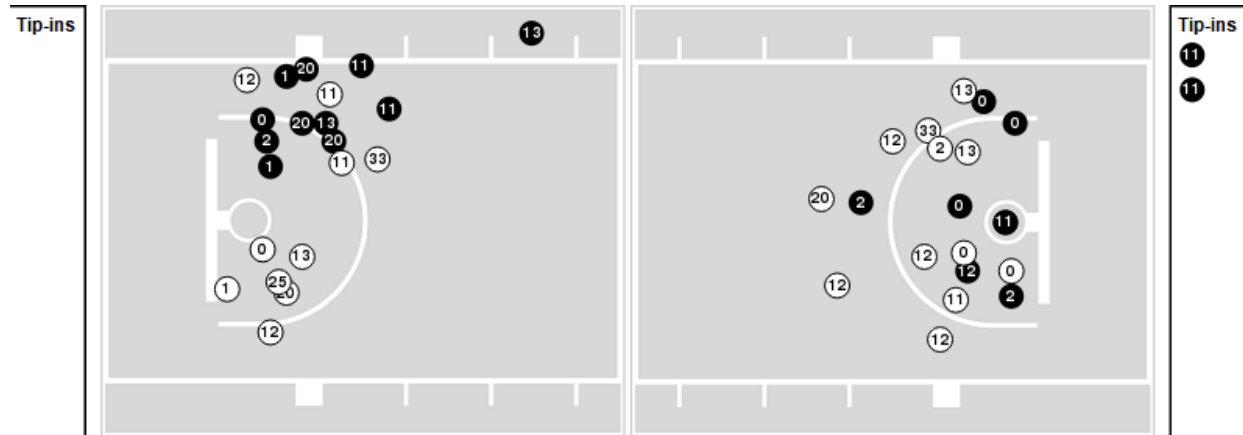
Players => AllFG Types=>AllResults=>All

Puget Sound

All Field Goals



Blow Up Chart



● Made ○ Missed N - Player Number

Puget Sound	M/A	%
Field Goals	29/68	43
2 Points	20/44	45
3 Points	9/24	38
Free Throws	10/13	77

Puget Sound	M/A	%
Points in the Paint	32 (16 / 38)	42
Fast Break Points	5 (3/5)	60
Second Chance Points	9 (6/9)	67
Effective FG%	49	



Officials:

Gust. Adolphus

Lineup	Quarter On	Time On	Quarter Off	Time Off	Time on Court	Score	Score Diff	Reb	Stl	Tov	Ass	PPP
3- Schommer J/ 4- Wieker E/ 21- Swanson S/ 22- Biewen A/ 32- Guse J/	1	20:00	1	16:25	03:35	11-11	0	3	1	1	2	1.3959
1- Kienitz B/ 2- Anderson C/ 21- Swanson S/ 22- Biewen A/ 23- Kellen D/	1	16:25	1	12:44	03:41	0-11	-11	4	0	2	0	0.0000
1- Kienitz B/ 3- Schommer J/ 4- Wieker E/ 11- Koch C/ 32- Guse J/	1	12:44	1	10:33	02:11	7-5	2	2	0	0	1	1.8041
3- Schommer J/ 4- Wieker E/ 11- Koch C/ 15- Olson W/ 21- Swanson S/	1	10:33	1	09:40	00:53	2-2	0	1	0	0	0	1.0000
3- Schommer J/ 4- Wieker E/ 15- Olson W/ 21- Swanson S/ 22- Biewen A/	1	09:40	1	08:31	01:09	1-0	1	2	0	0	0	0.3472
1- Kienitz B/ 3- Schommer J/ 15- Olson W/ 21- Swanson S/ 22- Biewen A/	1	08:31	1	08:01	00:30	4-0	4	1	0	0	0	2.0000
1- Kienitz B/ 2- Anderson C/ 15- Olson W/ 21- Swanson S/ 22- Biewen A/	1	08:01	1	06:36	01:25	3-2	1	2	0	0	1	1.2295
1- Kienitz B/ 2- Anderson C/ 15- Olson W/ 22- Biewen A/ 23- Kellen D/	1	06:36	1	05:56	00:40	0-0	0	1	0	0	0	0.0000
1- Kienitz B/ 2- Anderson C/ 3- Schommer J/ 4- Wieker E/ 32- Guse J/	1	05:56	1	05:56	00:00	0-0	0	0	0	0	0	0.0000
2- Anderson C/ 3- Schommer J/ 4- Wieker E/ 22- Biewen A/ 32- Guse J/	1	05:56	1	04:27	01:29	4-2	2	1	0	0	0	1.3333
3- Schommer J/ 4- Wieker E/ 11- Koch C/ 22- Biewen A/ 32- Guse J/	1	04:27	1	03:42	00:45	0-2	-2	0	0	0	0	0.0000
3- Schommer J/ 4- Wieker E/ 11- Koch C/ 21- Swanson S/ 32- Guse J/	1	03:42	1	02:00	01:42	4-1	3	2	0	0	1	1.3333
1- Kienitz B/ 11- Koch C/ 15- Olson W/ 21- Swanson S/ 22- Biewen A/	1	02:00	2	20:00	02:00	7-4	3	3	1	0	1	1.7500
3- Schommer J/ 4- Wieker E/ 21- Swanson S/ 22- Biewen A/ 32- Guse J/	2	20:00	2	14:59	05:01	9-2	7	7	2	5	2	0.7951
1- Kienitz B/ 2- Anderson C/ 15- Olson W/ 21- Swanson S/ 22- Biewen A/	2	14:59	2	12:58	02:01	2-4	-2	1	0	1	0	0.6667
1- Kienitz B/ 2- Anderson C/ 4- Wieker E/ 15- Olson W/ 23- Kellen D/	2	12:58	2	10:29	02:29	3-6	-3	4	0	2	0	0.6148
1- Kienitz B/ 4- Wieker E/ 21- Swanson S/ 22- Biewen A/ 23- Kellen D/	2	10:29	2	10:00	00:29	0-2	-2	0	0	1	0	0.0000
3- Schommer J/ 4- Wieker E/ 21- Swanson S/ 22- Biewen A/ 32- Guse J/	2	10:00	2	07:36	02:24	4-9	-5	0	0	0	1	1.3333
3- Schommer J/ 11- Koch C/ 21- Swanson S/ 22- Biewen A/ 32- Guse J/	2	07:36	2	06:05	01:31	1-1	0	3	1	0	0	0.4310
3- Schommer J/ 11- Koch C/ 15- Olson W/ 21- Swanson S/ 22- Biewen A/	2	06:05	2	05:37	00:28	3-2	1	1	0	0	1	3.0000
1- Kienitz B/ 4- Wieker E/ 15- Olson W/ 21- Swanson S/ 22- Biewen A/	2	05:37	2	04:06	01:31	5-6	-1	2	0	0	1	1.7361
1- Kienitz B/ 4- Wieker E/ 21- Swanson S/ 22- Biewen A/ 32- Guse J/	2	04:06	2	03:00	01:06	2-2	0	1	0	0	0	1.0000
3- Schommer J/ 4- Wieker E/ 21- Swanson S/ 22- Biewen A/ 32- Guse J/	2	03:00	2	00:29	02:31	4-2	2	5	1	0	0	1.4493
3- Schommer J/ 4- Wieker E/ 15- Olson W/ 21- Swanson S/ 22- Biewen A/	2	00:29	2	00:00	00:29	0-1	-1	1	0	0	0	0.0000



Official Basketball Rotations Summary - Final
Gust. Adolphus at Puget Sound
 12/28/22 Memorial Fieldhouse, Tacoma
 2022-23 Men's Basketball

Game Time: 6:00 PM
Game Duration: 1:45
Attendance: 200

Officials:

Puget Sound

Lineup	Quarter On	Time On	Quarter Off	Time Off	Time on Court	Score	Score Diff	Reb	Stl	Tov	Ass	PPP
0- Teclemariam M/ 11- Erickson G/ 12- Phillips T/ 13- Ruttledge L/ 20- Pohland W/	1	20:00	1	16:25	03:35	11-11	0	3	1	1	4	1.3750
0- Teclemariam M/ 1- Gillette D/ 2- Baker D/ 20- Pohland W/ 25- Bailey J/	1	16:25	1	13:54	02:31	6-0	6	2	1	0	2	1.5000
1- Gillette D/ 2- Baker D/ 11- Erickson G/ 12- Phillips T/ 13- Ruttledge L/	1	13:54	1	10:51	03:03	10-5	5	4	0	0	3	1.6667
0- Teclemariam M/ 11- Erickson G/ 12- Phillips T/ 13- Ruttledge L/ 33- DeBoer C/	1	10:51	1	09:40	01:11	2-4	-2	1	0	1	1	0.6667
0- Teclemariam M/ 2- Baker D/ 12- Phillips T/ 20- Pohland W/ 33- DeBoer C/	1	09:40	1	08:25	01:15	0-1	-1	3	0	1	0	0.0000
0- Teclemariam M/ 1- Gillette D/ 12- Phillips T/ 20- Pohland W/ 33- DeBoer C/	1	08:25	1	08:08	00:17	0-2	-2	0	0	1	0	0.0000
1- Gillette D/ 12- Phillips T/ 13- Ruttledge L/ 20- Pohland W/ 33- DeBoer C/	1	08:08	1	08:01	00:07	0-2	-2	0	0	0	0	0.0000
1- Gillette D/ 11- Erickson G/ 13- Ruttledge L/ 20- Pohland W/ 21- Claus Z/	1	08:01	1	05:36	02:25	4-5	-1	1	0	0	1	1.0000
0- Teclemariam M/ 1- Gillette D/ 11- Erickson G/ 13- Ruttledge L/ 20- Pohland W/	1	05:36	1	04:53	00:43	0-2	-2	0	0	1	0	0.0000
0- Teclemariam M/ 11- Erickson G/ 12- Phillips T/ 13- Ruttledge L/ 20- Pohland W/	1	04:53	1	02:00	02:53	3-4	-1	4	0	0	1	0.8721
0- Teclemariam M/ 12- Phillips T/ 13- Ruttledge L/ 20- Pohland W/ 25- Bailey J/	1	02:00	2	20:00	02:00	4-7	-3	2	0	1	1	0.9259
0- Teclemariam M/ 11- Erickson G/ 12- Phillips T/ 13- Ruttledge L/ 20- Pohland W/	2	20:00	2	17:49	02:11	2-6	-4	0	1	0	0	0.5155
0- Teclemariam M/ 2- Baker D/ 11- Erickson G/ 12- Phillips T/ 13- Ruttledge L/	2	17:49	2	17:27	00:22	0-0	0	0	0	0	0	0.0000
0- Teclemariam M/ 1- Gillette D/ 2- Baker D/ 11- Erickson G/ 13- Ruttledge L/	2	17:27	2	17:04	00:23	0-2	-2	1	0	1	0	0.0000
1- Gillette D/ 2- Baker D/ 11- Erickson G/ 13- Ruttledge L/ 33- DeBoer C/	2	17:04	2	14:59	02:05	0-1	-1	2	1	1	0	0.0000
0- Teclemariam M/ 1- Gillette D/ 2- Baker D/ 20- Pohland W/ 33- DeBoer C/	2	14:59	2	11:47	03:12	10-2	8	2	0	0	3	2.0000
0- Teclemariam M/ 2- Baker D/ 12- Phillips T/ 20- Pohland W/ 33- DeBoer C/	2	11:47	2	10:29	01:18	0-3	-3	0	1	0	0	0.0000
2- Baker D/ 11- Erickson G/ 12- Phillips T/ 13- Ruttledge L/ 20- Pohland W/	2	10:29	2	07:36	02:53	11-4	7	3	0	0	2	2.2000
0- Teclemariam M/ 1- Gillette D/ 11- Erickson G/ 13- Ruttledge L/ 20- Pohland W/	2	07:36	2	07:17	00:19	0-0	0	0	0	0	0	0.0000
0- Teclemariam M/ 1- Gillette D/ 2- Baker D/ 11- Erickson G/ 13- Ruttledge L/	2	07:17	2	06:48	00:29	0-1	-1	1	0	0	0	0.0000
0- Teclemariam M/ 1- Gillette D/ 2- Baker D/ 13- Ruttledge L/ 33- DeBoer C/	2	06:48	2	05:37	01:11	4-3	1	2	0	1	0	1.4493
0- Teclemariam M/ 1- Gillette D/ 2- Baker D/ 20- Pohland W/ 33- DeBoer C/	2	05:37	2	04:06	01:31	5-4	1	1	0	0	1	2.5000
0- Teclemariam M/ 2- Baker D/ 11- Erickson G/ 12- Phillips T/ 20- Pohland W/	2	04:06	2	03:00	01:06	2-3	-1	1	0	0	0	1.0000
0- Teclemariam M/ 2- Baker D/ 11- Erickson G/ 13- Ruttledge L/ 20- Pohland W/	2	03:00	2	02:00	01:00	0-2	-2	0	0	0	0	0.0000
0- Teclemariam M/ 2- Baker D/ 12- Phillips T/ 13- Ruttledge L/ 20- Pohland W/	2	02:00	2	00:49	01:10	0-1	-1	0	0	1	0	0.0000
0- Teclemariam M/ 1- Gillette D/ 2- Baker D/ 12- Phillips T/ 13- Ruttledge L/	2	00:49	2	00:29	00:21	2-1	1	3	0	0	0	2.0000
0- Teclemariam M/ 2- Baker D/ 11- Erickson G/ 13- Ruttledge L/ 20- Pohland W/	2	00:29	2	00:00	00:29	1-0	1	1	0	0	0	2.2727



Official Basketball Line Up Analysis - Final
Gust. Adolphus at Puget Sound
 12/28/22 Memorial Fieldhouse, Tacoma
 2022-23 Men's Basketball

Game Time: 6:00 PM
Game Duration: 1:45
Attendance: 200

Officials:

Gust. Adolphus

Lineup	Time	Score	Score Diff	Pts/Min	Reb	Stl	Tov	Ass	PPP
3- Schommer J/ 4- Wieker E/ 21- Swanson S/ 22- Biewen A/ 32- Guse J/	13:31	28-24	4	2.0715	15	4	6	5	1.1218
1- Kienitz B/ 2- Anderson C/ 21- Swanson S/ 22- Biewen A/ 23- Kellen D/	03:41	0-11	-11	0.0000	4	0	2	0	0.0000
1- Kienitz B/ 2- Anderson C/ 15- Olson W/ 21- Swanson S/ 22- Biewen A/	03:26	5-6	-1	1.4563	3	0	1	1	0.9191
1- Kienitz B/ 2- Anderson C/ 4- Wieker E/ 15- Olson W/ 23- Kellen D/	02:29	3-6	-3	1.2081	4	0	2	0	0.6148
1- Kienitz B/ 3- Schommer J/ 4- Wieker E/ 11- Koch C/ 32- Guse J/	02:11	7-5	2	3.2061	2	0	0	1	1.8041
1- Kienitz B/ 11- Koch C/ 15- Olson W/ 21- Swanson S/ 22- Biewen A/	02:00	7-4	3	3.5000	3	1	0	1	1.7500
3- Schommer J/ 4- Wieker E/ 11- Koch C/ 21- Swanson S/ 32- Guse J/	01:42	4-1	3	2.3529	2	0	0	1	1.3333
3- Schommer J/ 4- Wieker E/ 15- Olson W/ 21- Swanson S/ 22- Biewen A/	01:38	1-1	0	0.6122	3	0	0	0	0.2577
3- Schommer J/ 11- Koch C/ 21- Swanson S/ 22- Biewen A/ 32- Guse J/	01:31	1-1	0	0.6593	3	1	0	0	0.4310
1- Kienitz B/ 4- Wieker E/ 15- Olson W/ 21- Swanson S/ 22- Biewen A/	01:31	5-6	-1	3.2967	2	0	0	1	1.7361
2- Anderson C/ 3- Schommer J/ 4- Wieker E/ 22- Biewen A/ 32- Guse J/	01:29	4-2	2	2.6966	1	0	0	0	1.3333
1- Kienitz B/ 4- Wieker E/ 21- Swanson S/ 22- Biewen A/ 32- Guse J/	01:06	2-2	0	1.8182	1	0	0	0	1.0000
3- Schommer J/ 4- Wieker E/ 11- Koch C/ 15- Olson W/ 21- Swanson S/	00:53	2-2	0	2.2642	1	0	0	0	1.0000
3- Schommer J/ 4- Wieker E/ 11- Koch C/ 22- Biewen A/ 32- Guse J/	00:45	0-2	-2	0.0000	0	0	0	0	0.0000
1- Kienitz B/ 2- Anderson C/ 15- Olson W/ 22- Biewen A/ 23- Kellen D/	00:40	0-0	0	0.0000	1	0	0	0	0.0000
1- Kienitz B/ 3- Schommer J/ 15- Olson W/ 21- Swanson S/ 22- Biewen A/	00:30	4-0	4	8.0000	1	0	0	0	2.0000
1- Kienitz B/ 4- Wieker E/ 21- Swanson S/ 22- Biewen A/ 23- Kellen D/	00:29	0-2	-2	0.0000	0	0	1	0	0.0000
3- Schommer J/ 11- Koch C/ 15- Olson W/ 21- Swanson S/ 22- Biewen A/	00:28	3-2	1	6.4286	1	0	0	1	3.0000
1- Kienitz B/ 2- Anderson C/ 3- Schommer J/ 4- Wieker E/ 32- Guse J/	00:00	0-0	0	NaN	0	0	0	0	0.0000



Official Basketball Line Up Analysis - Final
Gust. Adolphus at Puget Sound
 12/28/22 Memorial Fieldhouse, Tacoma
 2022-23 Men's Basketball

Game Time: 6:00 PM
Game Duration: 1:45
Attendance: 200

Officials:

Puget Sound

Lineup	Time	Score	Score Diff	Pts/Min	Reb	Stl	Tov	Ass	PPP
0- Teclemariam M/ 11- Erickson G/ 12- Phillips T/ 13- Rutledge L/ 20- Pohland W/	08:39	16-21	-5	1.8497	7	2	1	5	1.0444
0- Teclemariam M/ 1- Gillette D/ 2- Baker D/ 20- Pohland W/ 33- DeBoer C/	04:43	15-6	9	3.1802	3	0	0	4	2.1429
1- Gillette D/ 2- Baker D/ 11- Erickson G/ 12- Phillips T/ 13- Rutledge L/	03:03	10-5	5	3.2787	4	0	0	3	1.6667
2- Baker D/ 11- Erickson G/ 12- Phillips T/ 13- Rutledge L/ 20- Pohland W/	02:53	11-4	7	3.8150	3	0	0	2	2.2000
0- Teclemariam M/ 2- Baker D/ 12- Phillips T/ 20- Pohland W/ 33- DeBoer C/	02:33	0-4	-4	0.0000	3	1	1	0	0.0000
0- Teclemariam M/ 1- Gillette D/ 2- Baker D/ 20- Pohland W/ 25- Bailey J/	02:31	6-0	6	2.3841	2	1	0	2	1.5000
1- Gillette D/ 11- Erickson G/ 13- Rutledge L/ 20- Pohland W/ 21- Claus Z/	02:25	4-5	-1	1.6552	1	0	0	1	1.0000
1- Gillette D/ 2- Baker D/ 11- Erickson G/ 13- Rutledge L/ 33- DeBoer C/	02:05	0-1	-1	0.0000	2	1	1	0	0.0000
0- Teclemariam M/ 12- Phillips T/ 13- Rutledge L/ 20- Pohland W/ 25- Bailey J/	02:00	4-7	-3	2.0000	2	0	1	1	0.9259
0- Teclemariam M/ 2- Baker D/ 11- Erickson G/ 13- Rutledge L/ 20- Pohland W/	01:29	1-2	-1	0.6742	1	0	0	0	0.5319
0- Teclemariam M/ 11- Erickson G/ 12- Phillips T/ 13- Rutledge L/ 33- DeBoer C/	01:11	2-4	-2	1.6901	1	0	1	1	0.6667
0- Teclemariam M/ 1- Gillette D/ 2- Baker D/ 13- Rutledge L/ 33- DeBoer C/	01:11	4-3	1	3.3803	2	0	1	0	1.4493
0- Teclemariam M/ 2- Baker D/ 12- Phillips T/ 13- Rutledge L/ 20- Pohland W/	01:10	0-1	-1	0.0000	0	0	1	0	0.0000
0- Teclemariam M/ 2- Baker D/ 11- Erickson G/ 12- Phillips T/ 20- Pohland W/	01:06	2-3	-1	1.8182	1	0	0	0	1.0000
0- Teclemariam M/ 1- Gillette D/ 11- Erickson G/ 13- Rutledge L/ 20- Pohland W/	01:02	0-2	-2	0.0000	0	0	1	0	0.0000
0- Teclemariam M/ 1- Gillette D/ 2- Baker D/ 11- Erickson G/ 13- Rutledge L/	00:52	0-3	-3	0.0000	2	0	1	0	0.0000
0- Teclemariam M/ 2- Baker D/ 11- Erickson G/ 12- Phillips T/ 13- Rutledge L/	00:22	0-0	0	0.0000	0	0	0	0	0.0000
0- Teclemariam M/ 1- Gillette D/ 2- Baker D/ 12- Phillips T/ 13- Rutledge L/	00:21	2-1	1	5.7143	3	0	0	0	2.0000
0- Teclemariam M/ 1- Gillette D/ 12- Phillips T/ 20- Pohland W/ 33- DeBoer C/	00:17	0-2	-2	0.0000	0	0	1	0	0.0000
1- Gillette D/ 12- Phillips T/ 13- Rutledge L/ 20- Pohland W/ 33- DeBoer C/	00:07	0-2	-2	0.0000	0	0	0	0	0.0000