



Official Basketball Box Score - Final
Gust. Adolphus at Crown (MN)
 11/15/22 Athletic Center, Saint Bonifacius
 2022-23 Men's Basketball

Game Time: 7:00 PM
 Game Duration: 1:40
 Attendance: 187

Officials:

Gust. Adolphus - 75

Record: 0-2

NO.	Name	F	Min	FG			3P			FT			Rebounds			Fouls		TP	AS	TO	ST	Blocks		+/-
				M-A	M-A	M-A	OR	DR	TOT	PF	FD	BS	BA											
4	Evan Wieker	F	23:28	2-10	0-3	3-4	2	6	8	1	3	7	2	3	0	0	0	0	0	0	0	-7		
21	Spencer Swanson	F	35:27	7-14	3-5	6-8	3	6	9	2	6	23	2	5	4	0	0	0	0	0	-3			
22	Adam Biewen	F	36:25	8-11	3-4	4-8	2	6	8	1	6	23	4	0	1	0	0	0	0	-2				
32	Jake Guse	C	22:37	2-6	0-0	4-4	2	0	2	1	2	8	6	0	0	0	0	0	0	4				
3	Jordan Schommer	G	20:37	2-8	0-2	0-0	1	1	2	4	1	4	0	2	0	0	0	0	0	-14				
23	Dawson Kellen		10:52	1-1	0-0	0-0	2	0	2	0	0	2	0	0	0	0	0	0	0	-8				
5	Cade McGraw		24:23	2-6	1-3	3-3	0	3	3	4	3	8	3	1	0	0	0	0	-9					
1	Brady Kienitz		11:59	0-3	0-2	0-0	0	0	0	2	0	0	0	2	1	0	0	0	-2					
10	Jack Zammit		11:52	0-1	0-0	0-0	0	1	1	3	1	0	0	2	0	0	0	0	5					
2	Cam Anderson		02:20	0-0	0-0	0-0	0	0	0	0	0	0	0	1	0	0	0	0	-4					
Team							2	0	2			0		0										
Totals				24-60	7-19	20-27	14	23	37	18	22	75	17	16	6	0	0	0	0	-8				

Shooting By Period		
1st FG%	9-28	32.1%
3PT%	2-8	25.0%
FT%	7-8	87.5%
2nd FG%	15-32	46.9%
3PT%	5-11	45.5%
FT%	13-19	68.4%
GM FG%	24-60	40.0%
3PT%	7-19	36.8%
FT%	20-27	74.1%

Dead Ball Rebounds: 5, 3

Technical Fouls::NONE

Crown (MN) - 83

Record: 2-1

NO.	Name	F	Min	FG			3P			FT			Rebounds			Fouls		TP	AS	TO	ST	Blocks		+/-
				M-A	M-A	M-A	OR	DR	TOT	PF	FD	BS	BA											
14	Cade Carroll	F	12:08	6-10	1-2	0-0	0	1	1	0	0	13	0	0	1	0	0	0	0	0	14			
21	Seth Royston	F	29:07	5-11	1-6	0-0	0	6	6	4	2	11	1	1	3	0	0	0	0	9				
31	Jacob Van Dam	F	31:00	5-14	1-6	3-3	3	4	7	3	3	14	5	1	2	0	0	0	12					
11	Micah Ladd	G	32:17	2-4	1-3	1-3	1	1	2	2	4	6	6	3	2	0	0	0	-10					
20	Alec Testerman	G	26:42	6-8	0-1	2-2	1	1	2	1	2	14	2	1	1	0	0	0	-3					
10	Jacob Masek		24:16	4-9	0-2	0-0	1	2	3	3	3	8	5	1	1	0	0	0	1					
55	PJ Ebeling		10:53	1-1	0-0	0-0	1	3	4	4	0	2	0	0	0	0	0	0	-1					
2	Jahmar White		16:42	4-8	0-2	3-3	0	2	2	1	2	11	6	2	0	0	0	0	17					
12	Carter Behne		16:55	2-3	0-1	0-1	1	2	3	4	2	4	2	0	2	0	0	0	1					
Team							0	0	0			0		0										
Totals				35-68	4-23	9-12	8	22	30	22	18	83	27	9	12	0	0	0	8					

Shooting By Period		
1st FG%	22-39	56.4%
3PT%	3-13	23.1%
FT%	2-3	66.7%
2nd FG%	13-29	44.8%
3PT%	1-10	10.0%
FT%	7-9	77.8%
GM FG%	35-68	51.5%
3PT%	4-23	17.4%
FT%	9-12	75.0%

Dead Ball Rebounds: 2, 2

Technical Fouls::NONE

	GUS	CRO
Biggest lead	0 (1 st 20:00)	27 (1 st 3:04)
Best Scoring Run	15 (2 nd 3:40)	12 (1 st 16:06)
Lead Changes	0	
Times Tied	0	
Time with Lead	00:00	39:37

Points from	GUS	CRO
Turnovers	9	26
Paint	32	38
Second Chance	11	8
Fast Breaks	2	17
Bench	10	25

	Period by Period Scoring		
	1st	2nd	TOT
GUS	27	48	75
CRO	49	34	83



Officials:

Period 1

Quarter Starters:

CRO	11 Ladd M	14 Carroll C	20 Testerman A	21 Royston S	31 Van Dam J
GUS	3 Schommer J	4 Wieker E	21 Swanson S	22 Biewen A	32 Guse J

Game Time	CRO	Score	Diff	GUS
20:00	21 ROYSTON S jumpball lost			32 GUSE J jumpball won
19:47				32 GUSE J 2pt FG outside the paint, jump shot missed
19:44	defensive dead ball rebound (1)			
19:37	14 CARROLL C 2pt FG outside the paint, jump shot made (2)	2-0	2	
19:37	11 LADD M assist (1)			
19:17	20 TESTERMAN A steal (1)			4 WIEKER E turnover lost ball (1)
19:00	21 ROYSTON S 3pt FG from turnover, jump shot missed			
18:56	31 VAN DAM J offensive rebound (1)			
18:47	20 TESTERMAN A 2pt FG from turnover second chance in the paint, jump shot made (2)	4-0	4	
18:47	11 LADD M assist (2)			
18:26	31 VAN DAM J steal (1)			3 SCHOMMER J turnover lost ball (1)
18:21	20 TESTERMAN A 2pt FG fast break from turnover outside the paint, jump shot made (4)	6-0	6	
18:21	31 VAN DAM J assist (1)			
18:04				32 GUSE J 2pt FG in the paint, jump shot missed
17:59	31 VAN DAM J defensive rebound (2)			
17:55	14 CARROLL C 3pt FG , jump shot missed			
17:51				4 WIEKER E defensive rebound (1)
17:36				3 SCHOMMER J 2pt FG outside the paint, jump shot missed
17:34	31 VAN DAM J defensive rebound (3)			
17:27	20 TESTERMAN A 2pt FG in the paint, layup made (6)	8-0	8	
17:15				22 BIEWEN A 2pt FG outside the paint, jump shot missed
17:11	21 ROYSTON S defensive rebound (1)			
16:57	14 CARROLL C 2pt FG in the paint, jump shot missed			
16:55				3 SCHOMMER J defensive rebound (1)
16:47	21 ROYSTON S steal (1)			21 SWANSON S turnover lost ball (1)
16:30	14 CARROLL C 2pt FG from turnover outside the paint, jump shot made (4)	10-0	10	
16:30	20 TESTERMAN A assist (1)			
16:11	21 ROYSTON S steal (2)			21 SWANSON S turnover lost ball (2)
16:06	14 CARROLL C 2pt FG from turnover in the paint, layup made (6)	12-0	12	
16:06				Timeout 30 Sec
15:55		12-3	9	22 BIEWEN A 3pt FG , jump shot made (3)
15:55				32 GUSE J assist (1)
15:36	31 VAN DAM J 2pt FG in the paint, jump shot missed			
15:33				4 WIEKER E defensive rebound (2)
15:30				32 GUSE J substitution out
15:30				23 KELLEN D substitution in
15:18				4 WIEKER E turnover bad pass (2)
15:18				4 WIEKER E substitution out
15:18				5 MCGRAW C substitution in
15:07	21 ROYSTON S 3pt FG from turnover, jump shot missed			



Officials:

Game Time	CRO	Score	Diff	GUS
15:03	11 LADD M offensive rebound (1)			
15:01	11 LADD M turnover bad pass (1)			
15:00	14 CARROLL C substitution out			
15:00	21 ROYSTON S substitution out			
15:00	10 MASEK J substitution in			
15:00	55 EBELING P substitution in			
14:46	31 VAN DAM J 2pt FG outside the paint, jump shot missed			
14:43				defensive dead ball rebound (1)
14:43				3 SCHOMMER J substitution out
14:43				1 KIENITZ B substitution in
14:35	10 MASEK J foul personal (1 - 1)			21 SWANSON S foul drawn (1)
14:12	31 VAN DAM J steal (2)			21 SWANSON S turnover lost ball (3)
14:07	10 MASEK J 2pt FG fast break from turnover in the paint, layup made (2)	14-3	11	
14:07	31 VAN DAM J assist (2)			
13:37				1 KIENITZ B 3pt FG , jump shot missed
13:33	55 EBELING P defensive rebound (1)			
13:24	31 VAN DAM J 3pt FG , jump shot missed			
13:20				5 MCGRAW C defensive rebound (1)
13:18				21 SWANSON S 2pt FG in the paint, jump shot missed
13:15	10 MASEK J defensive rebound (1)			
12:57	20 TESTERMAN A foul drawn (1)			1 KIENITZ B foul shooting (1 - 1)
12:57	20 TESTERMAN A free throw 1 - 2 made (7)	15-3	12	
12:57	11 LADD M substitution out			
12:57	31 VAN DAM J substitution out			
12:57	2 WHITE J substitution in			
12:57	14 CARROLL C substitution in			
12:57				21 SWANSON S substitution out
12:57				4 WIEKER E substitution in
12:58	20 TESTERMAN A free throw 2 - 2 made (8)	16-3	13	
12:58				22 BIEWEN A substitution out
12:58				3 SCHOMMER J substitution in
12:43				4 WIEKER E 2pt FG outside the paint, jump shot missed
12:40	10 MASEK J defensive rebound (2)			
12:36	20 TESTERMAN A 3pt FG , jump shot missed			
12:31				5 MCGRAW C defensive rebound (2)
12:23		16-5	11	23 KELLEN D 2pt FG in the paint, layup made (2)
12:23				4 WIEKER E assist (1)
12:08	10 MASEK J 2pt FG outside the paint, jump shot made (4)	18-5	13	
12:08	2 WHITE J assist (1)			
12:00				3 SCHOMMER J 2pt FG in the paint, jump shot missed
11:54				3 SCHOMMER J offensive rebound (2)
11:53	14 CARROLL C steal (1)			3 SCHOMMER J turnover lost ball (2)
11:48	14 CARROLL C 2pt FG fast break from turnover in the paint, layup made (8)	20-5	15	
11:48	2 WHITE J assist (2)			
11:42				5 MCGRAW C 2pt FG outside the paint, jump shot missed
11:38	55 EBELING P defensive rebound (2)			
11:31	2 WHITE J 2pt FG in the paint, jump shot made (2)	22-5	17	
11:31	10 MASEK J assist (1)			



Officials:

Game Time	CRO	Score	Diff	GUS
11:30				Timeout 60 Sec
11:30	55 EBELING P substitution out			
11:30	21 ROYSTON S substitution in			
11:30	20 TESTERMAN A substitution out			
11:30	12 BEHNE C substitution in			
11:30				23 KELLEN D substitution out
11:30				32 GUSE J substitution in
11:05				4 WIEKER E 3pt FG , jump shot missed
10:59				4 WIEKER E offensive rebound (3)
10:58				4 WIEKER E 2pt FG second chance outside the paint, jump shot missed
10:55				32 GUSE J offensive rebound (1)
10:54				32 GUSE J 2pt FG second chance outside the paint, hook shot missed
10:51				4 WIEKER E offensive rebound (4)
10:51				4 WIEKER E 2pt FG second chance in the paint, jump shot missed
10:41				offensive dead ball rebound (2)
10:40	12 BEHNE C foul shooting (1 - 2)			4 WIEKER E foul drawn (1)
10:28				4 WIEKER E free throw 1 - 2 missed
10:28				offensive dead ball rebound (3)
10:27				5 MCGRAW C substitution out
10:27				10 ZAMMIT J substitution in
10:07		22-6	16	4 WIEKER E free throw 2 - 2 made (1)
10:22	2 WHITE J 3pt FG , jump shot missed			
10:20				defensive dead ball rebound (4)
10:01				4 WIEKER E 3pt FG , jump shot missed
09:58	21 ROYSTON S defensive rebound (2)			
09:51	14 CARROLL C 3pt FG , jump shot made (11)	25-6	19	
09:51	2 WHITE J assist (3)			
09:28	21 ROYSTON S foul personal (1 - 3)			4 WIEKER E foul drawn (2)
09:28	2 WHITE J substitution out			
09:28	10 MASEK J substitution out			
09:28	12 BEHNE C substitution out			
09:28	21 ROYSTON S substitution out			
09:28	11 LADD M substitution in			
09:28	20 TESTERMAN A substitution in			
09:28	31 VAN DAM J substitution in			
09:28	55 EBELING P substitution in			
09:28				3 SCHOMMER J 2pt FG outside the paint, jump shot missed
09:28				offensive rebound (10)
09:23				1 KIENITZ B substitution out
09:23				22 BIEWEN A substitution in
09:09	14 CARROLL C 2pt FG outside the paint, jump shot made (13)	27-6	21	
09:09	31 VAN DAM J assist (3)			
08:56		27-8	19	22 BIEWEN A 2pt FG in the paint, jump shot made (5)
08:56				32 GUSE J assist (2)
08:39	14 CARROLL C 2pt FG outside the paint, jump shot missed			
08:36				22 BIEWEN A defensive rebound (1)
08:23	55 EBELING P foul shooting (1 - 4)			4 WIEKER E foul drawn (3)



Officials:

Game Time	CRO	Score	Diff	GUS
08:24		27-9	18	4 WIEKER E free throw 1 - 2 made (2)
08:24		27-10	17	4 WIEKER E free throw 2 - 2 made (3)
08:24				32 GUSE J substitution out
08:24				21 SWANSON S substitution in
08:01	14 CARROLL C 2pt FG in the paint, jump shot missed			
07:58				4 WIEKER E defensive rebound (5)
07:49		27-12	15	3 SCHOMMER J 2pt FG in the paint, jump shot made (2)
07:22	31 VAN DAM J 2pt FG outside the paint, jump shot missed			
07:18				22 BIEWEN A defensive rebound (2)
07:10				3 SCHOMMER J 3pt FG , jump shot missed
07:06				offensive rebound (14)
07:06	31 VAN DAM J foul drawn (1)			10 ZAMMIT J foul personal (1 - 2)
07:06	14 CARROLL C substitution out			
07:06	20 TESTERMAN A substitution out			
07:06	31 VAN DAM J substitution out			
07:06	55 EBELING P substitution out			
07:06	2 WHITE J substitution in			
07:06	10 MASEK J substitution in			
07:06	12 BEHNE C substitution in			
07:06	21 ROYSTON S substitution in			
07:01	12 BEHNE C foul drawn (1)			10 ZAMMIT J foul personal (2 - 3)
07:01	11 LADD M substitution out			
07:01	14 CARROLL C substitution in			
07:01				10 ZAMMIT J substitution out
07:01				5 MCGRAW C substitution in
06:54	10 MASEK J 2pt FG in the paint, jump shot made (6)	29-12	17	
06:54	2 WHITE J assist (4)			
06:39	2 WHITE J foul personal (1 - 5)			5 MCGRAW C foul drawn (1)
06:34		29-14	15	22 BIEWEN A 2pt FG in the paint, jump shot made (7)
06:34				21 SWANSON S assist (1)
06:23	10 MASEK J foul drawn (1)			3 SCHOMMER J foul personal (1 - 4)
06:14	2 WHITE J 2pt FG in the paint, jump shot missed			
06:10	12 BEHNE C offensive rebound (1)			
06:10	21 ROYSTON S steal (3)			21 SWANSON S turnover lost ball (4)
06:03	21 ROYSTON S 2pt FG from turnover in the paint, jump shot made (2)	31-14	17	
06:03	2 WHITE J assist (5)			
05:50				3 SCHOMMER J 3pt FG , jump shot missed
05:44	14 CARROLL C defensive rebound (1)			
05:44	14 CARROLL C substitution out			
05:44	31 VAN DAM J substitution in			
05:39	31 VAN DAM J 3pt FG , jump shot missed			
05:36				21 SWANSON S defensive rebound (1)
05:34				21 SWANSON S turnover dribbling violation (5)
05:21	12 BEHNE C 2pt FG from turnover in the paint, jump shot made (2)	33-14	19	
05:21	10 MASEK J assist (2)			
05:05				4 WIEKER E 3pt FG , jump shot missed
05:02	12 BEHNE C defensive rebound (2)			
04:44	2 WHITE J substitution out			



Officials:

Game Time	CRO	Score	Diff	GUS
04:44	11 LADD M substitution in			
04:44				4 WIEKER E substitution out
04:44				2 ANDERSON C substitution in
04:38	31 VAN DAM J 3pt FG , jump shot made (3)	36-14	22	
04:38	12 BEHNE C assist (1)			
04:24	10 MASEK J steal (1)			2 ANDERSON C turnover lost ball (1)
04:19	10 MASEK J 2pt FG fast break from turnover outside the paint, jump shot made (8)	38-14	24	
04:06	21 ROYSTON S foul drawn (1)			3 SCHOMMER J foul personal (2 - 5)
04:06	10 MASEK J substitution out			
04:06	20 TESTERMAN A substitution in			
03:46	31 VAN DAM J 3pt FG , jump shot missed			
03:41	20 TESTERMAN A offensive rebound (1)			
03:41	20 TESTERMAN A 2pt FG second chance in the paint, jump shot made (10)	40-14	26	
03:32	21 ROYSTON S foul personal (2 - 6)			3 SCHOMMER J foul drawn (1)
03:32	21 ROYSTON S substitution out			
03:32	55 EBELING P substitution in			
03:28		40-16	24	22 BIEWEN A 2pt FG in the paint, layup made (9)
03:28				5 MCGRAW C assist (1)
03:04	11 LADD M 3pt FG , jump shot made (3)	43-16	27	
03:04	31 VAN DAM J assist (4)			
02:48		43-18	25	3 SCHOMMER J 2pt FG in the paint, jump shot made (4)
02:48				22 BIEWEN A assist (1)
02:36	12 BEHNE C 3pt FG , jump shot missed			
02:31				22 BIEWEN A defensive rebound (3)
02:25				3 SCHOMMER J 2pt FG outside the paint, jump shot missed
02:23	55 EBELING P defensive rebound (3)			
02:23	12 BEHNE C foul shooting (2 - 7)			21 SWANSON S foul drawn (2)
02:23				5 MCGRAW C substitution out
02:23				1 KIENITZ B substitution in
02:23		43-19	24	21 SWANSON S 1&1 free throw 1 made (1)
02:24		43-20	23	21 SWANSON S 1&1 free throw 2 made (2)
02:24				2 ANDERSON C substitution out
02:24				3 SCHOMMER J substitution out
02:24				10 ZAMMIT J substitution in
02:24				32 GUSE J substitution in
02:09	11 LADD M 3pt FG , jump shot missed			
02:05				10 ZAMMIT J defensive rebound (1)
01:50	55 EBELING P foul shooting (2 - 8)			32 GUSE J foul drawn (1)
01:51		43-21	22	32 GUSE J free throw 1 - 2 made (1)
01:51		43-22	21	32 GUSE J free throw 2 - 2 made (2)
01:30	12 BEHNE C 2pt FG in the paint, jump shot made (4)	45-22	23	
01:30	31 VAN DAM J assist (5)			
01:30	12 BEHNE C foul drawn (2)			1 KIENITZ B foul shooting (2 - 6)
01:30	12 BEHNE C free throw 1 - 1 missed			
01:30				22 BIEWEN A defensive rebound (4)
01:17	11 LADD M steal (1)			10 ZAMMIT J turnover lost ball (1)
01:12	20 TESTERMAN A 2pt FG from turnover in the paint, jump shot made (12)	47-22	25	



Official Basketball Play by Play - First Half
Gust. Adolphus at Crown (MN)
11/15/22 Athletic Center, Saint Bonifacius
2022-23 Men's Basketball

Game Time: 7:00 PM
Game Duration: 1:40
Attendance: 187

Officials:

Game Time	CRO	Score	Diff	GUS
01:12	11 LADD M assist (3)			
00:54		47-24	23	32 GUSE J 2pt FG in the paint, jump shot made (4)
00:54				22 BIEWEN A assist (2)
00:39	55 EBELING P 2pt FG in the paint, jump shot made (2)	49-24	25	
00:25		49-27	22	22 BIEWEN A 3pt FG , jump shot made (12)
00:25				32 GUSE J assist (3)
END OF PERIOD				
CRO 49-27 GUS				



Official Basketball Box Score - First Half
Gust. Adolphus at Crown (MN)
 11/15/22 Athletic Center, Saint Bonifacius
 2022-23 Men's Basketball

Game Time: 7:00 PM
 Game Duration: 1:40
 Attendance: 187

Officials:

Gust. Adolphus - 27

NO.	Name	F	Min	FG			Rebounds			Fouls		TP	AS	TO	ST	Blocks		+/-
				M-A	3P	FT	OR	DR	TOT	PF	FD					BS	BA	
4	Evan Wieker	F	12:55	0-6	0-3	3-4	2	3	5	0	3	3	1	2	0	0	0	-16
21	Spencer Swanson	F	15:27	0-1	0-0	2-2	0	1	1	0	2	2	1	5	0	0	0	-17
22	Adam Biewen	F	16:25	5-6	2-2	0-0	0	4	4	0	0	12	2	0	0	0	0	-16
32	Jake Guse	C	10:00	1-4	0-0	2-2	1	0	1	0	1	4	3	0	0	0	0	-8
3	Jordan Schommer	G	15:51	2-8	0-2	0-0	1	1	2	2	1	4	0	2	0	0	0	-19
23	Dawson Kellen		04:00	1-1	0-0	0-0	0	0	0	0	0	2	0	0	0	0	0	-8
5	Cade McGraw		09:29	0-1	0-0	0-0	0	2	2	0	1	0	1	0	0	0	0	-18
1	Brady Kienitz		07:43	0-1	0-1	0-0	0	0	0	2	0	0	0	0	0	0	0	-7
10	Jack Zammit		05:50	0-0	0-0	0-0	0	1	1	2	0	0	0	1	0	0	0	3
2	Cam Anderson		02:20	0-0	0-0	0-0	0	0	0	0	0	0	0	1	0	0	0	-4
Team							2	0	2			0		0				
Totals				9-28	2-8	7-8	6	12	18	6	8	27	8	11	0	0	0	-22

Shooting By Period		
1st FG%	9-28	32.1%
3PT%	2-8	25.0%
FT%	7-8	87.5%
GM FG%	9-28	32.1%
3PT%	2-8	25.0%
FT%	7-8	87.5%

Dead Ball Rebounds: 2, 2

Technical Fouls::NONE

Crown (MN) - 49

NO.	Name	F	Min	FG			Rebounds			Fouls		TP	AS	TO	ST	Blocks		+/-
				M-A	3P	FT	OR	DR	TOT	PF	FD					BS	BA	
14	Cade Carroll	F	12:08	6-10	1-2	0-0	0	1	1	0	0	13	0	0	1	0	0	14
21	Seth Royston	F	10:36	1-3	0-2	0-0	0	2	2	2	1	2	0	0	3	0	0	22
31	Jacob Van Dam	F	15:09	1-7	1-4	0-0	1	2	3	0	1	3	5	0	2	0	0	13
11	Micah Ladd	G	14:14	1-2	1-2	0-0	1	0	1	0	0	3	3	1	1	0	0	11
20	Alec Testerman	G	14:58	5-6	0-1	2-2	1	0	1	0	1	12	1	0	1	0	0	11
10	Jacob Masek		08:32	4-4	0-0	0-0	0	2	2	1	1	8	2	0	1	0	0	19
55	PJ Ebeling		09:24	1-1	0-0	0-0	0	3	3	2	0	2	0	0	0	0	0	0
2	Jahmar White		05:51	1-3	0-1	0-0	0	0	0	1	0	2	5	0	0	0	0	11
12	Carter Behne		09:08	2-3	0-1	0-1	1	1	2	2	2	4	1	0	0	0	0	9
Team							0	0	0			0		0				
Totals				22-39	3-13	2-3	4	11	15	8	6	49	17	1	9	0	0	22

Shooting By Period		
1st FG%	22-39	56.4%
3PT%	3-13	23.1%
FT%	2-3	66.7%
GM FG%	22-39	56.4%
3PT%	3-13	23.1%
FT%	2-3	66.7%

Dead Ball Rebounds: 0, 1

Technical Fouls::NONE

	GUS	CRO
Biggest lead	0 (1 st 20:00)	27 (1 st 3:04)
Best Scoring Run	6(1 st 7:49)	12(1 st 16:06)
Lead Changes	0	
Times Tied	0	
Time with Lead	00:00	19:37

Points from	GUS	CRO
Turnovers	0	20
Paint	14	26
Second Chance	1	4
Fast Breaks	0	8
Bench	2	16

	Period by Period Scoring		
	1st	2nd	TOT
GUS	27	48	75
CRO	49	34	83



Period 2

Quarter Starters:

CRO	10 Masek J	11 Ladd M	20 Testerman A	21 Royston S	31 Van Dam J
GUS	1 Kienitz B	10 Zammit J	21 Swanson S	22 Biewen A	32 Guse J

Game Time	CRO	Score	Diff	GUS
20:00	12 BEHNE C substitution out			
20:00	55 EBELING P substitution out			
20:00	10 MASEK J substitution in			
20:00	21 ROYSTON S substitution in			
19:57	11 LADD M 3pt FG , jump shot missed			
19:51				21 SWANSON S defensive rebound (2)
19:23				22 BIEWEN A 2pt FG in the paint, jump shot missed
19:20				22 BIEWEN A offensive rebound (5)
19:19		49-29	20	22 BIEWEN A 2pt FG second chance in the paint, jump shot made (14)
19:09				1 KIENITZ B substitution out
19:09				10 ZAMMIT J substitution out
19:09				3 SCHOMMER J substitution in
19:09				4 WIEKER E substitution in
18:55	21 ROYSTON S 3pt FG , jump shot missed			
18:52	31 VAN DAM J offensive rebound (4)			
18:31	10 MASEK J 3pt FG second chance, jump shot missed			
18:28				21 SWANSON S defensive rebound (3)
18:23	11 LADD M steal (2)			4 WIEKER E turnover lost ball (3)
18:16	20 TESTERMAN A 2pt FG fast break from turnover outside the paint, jump shot made (14)	51-29	22	
18:16	11 LADD M assist (4)			
18:05				21 SWANSON S 3pt FG , jump shot missed
18:02	20 TESTERMAN A defensive rebound (2)			
17:57	10 MASEK J 3pt FG , jump shot missed			
17:52	31 VAN DAM J offensive rebound (5)			
17:42	20 TESTERMAN A foul drawn (2)			4 WIEKER E foul personal (1 - 1)
17:33	11 LADD M foul drawn (1)			3 SCHOMMER J foul personal (3 - 2)
17:22	21 ROYSTON S 2pt FG second chance outside the paint, jump shot missed			
17:19				4 WIEKER E defensive rebound (6)
17:12	31 VAN DAM J foul shooting (1 - 1)			22 BIEWEN A foul drawn (1)
17:12		51-30	21	22 BIEWEN A free throw 1 - 2 made (15)
17:12	21 ROYSTON S substitution out			
17:12	55 EBELING P substitution in			
17:12		51-31	20	22 BIEWEN A free throw 2 - 2 made (16)
16:44	31 VAN DAM J 2pt FG in the paint, jump shot missed			
16:44	offensive dead ball rebound (2)			
16:42	10 MASEK J 2pt FG second chance in the paint, jump shot missed			
16:41	55 EBELING P offensive rebound (4)			
16:41	55 EBELING P foul personal (3 - 2)			22 BIEWEN A foul drawn (2)
16:39		51-34	17	21 SWANSON S 3pt FG , jump shot made (5)
16:39				4 WIEKER E assist (2)



Gust. Adolphus at Crown (MN)

11/15/22 Athletic Center, Saint Bonifacius
2022-23 Men's Basketball

Game Time: 7:00 PM
Game Duration: 1:40
Attendance: 187

Officials:

Game Time	CRO	Score	Diff	GUS
16:06	11 LADD M 2pt FG outside the paint, jump shot made (5)	53-34	19	
16:06	20 TESTERMAN A assist (2)			
16:05	Timeout 60 Sec			
16:06	55 EBELING P substitution out			
16:06	21 ROYSTON S substitution in			
15:57	11 LADD M foul personal (1 - 3)			21 SWANSON S foul drawn (3)
15:57				4 WIEKER E substitution out
15:57				1 KIENITZ B substitution in
15:41				1 KIENITZ B turnover bad pass (1)
15:31	11 LADD M turnover lost ball (2)			21 SWANSON S steal (1)
15:21				1 KIENITZ B 3pt FG from turnover, jump shot missed
15:16				22 BIEWEN A offensive rebound (6)
15:15		53-36	17	22 BIEWEN A 2pt FG from turnover second chance in the paint, jump shot made (18)
14:54	10 MASEK J foul drawn (2)			3 SCHOMMER J foul personal (4 - 3)
14:54				3 SCHOMMER J substitution out
14:54				5 MCGRAW C substitution in
14:42	31 VAN DAM J 2pt FG in the paint, jump shot made (5)	55-36	19	
14:42	10 MASEK J assist (3)			
14:32		55-38	17	32 GUSE J 2pt FG in the paint, jump shot made (6)
14:32				5 MCGRAW C assist (2)
14:06	20 TESTERMAN A 2pt FG in the paint, jump shot missed			
14:04				5 MCGRAW C defensive rebound (3)
13:58		55-40	15	21 SWANSON S 2pt FG fast break in the paint, jump shot made (7)
13:58				32 GUSE J assist (4)
13:42	21 ROYSTON S 3pt FG , jump shot made (5)	58-40	18	
13:42	10 MASEK J assist (4)			
13:40	Timeout 30 Sec			
13:40	10 MASEK J substitution out			
13:40	12 BEHNE C substitution in			
13:40	11 LADD M substitution out			
13:40	2 WHITE J substitution in			
13:31	12 BEHNE C steal (1)			1 KIENITZ B turnover lost ball (2)
13:10	20 TESTERMAN A turnover lost ball (1)			1 KIENITZ B steal (1)
13:03	31 VAN DAM J foul shooting (2 - 4)			22 BIEWEN A foul drawn (3)
13:03				1 KIENITZ B substitution out
13:03				32 GUSE J substitution out
13:03				10 ZAMMIT J substitution in
13:03				23 KELLEN D substitution in
13:03				22 BIEWEN A free throw fast break 1 - 2 missed
13:03				offensive dead ball rebound (5)
13:03				22 BIEWEN A free throw fast break 2 - 2 missed
13:03	31 VAN DAM J defensive rebound (6)			
12:49	31 VAN DAM J 3pt FG , jump shot missed			
12:42				defensive dead ball rebound (6)
12:25				21 SWANSON S 3pt FG , jump shot missed
12:22				23 KELLEN D offensive rebound (1)
12:22	12 BEHNE C foul personal (3 - 5)			22 BIEWEN A foul drawn (4)
12:22	12 BEHNE C steal (2)			5 MCGRAW C turnover bad pass (1)

**Gust. Adolphus at Crown (MN)**11/15/22 Athletic Center, Saint Bonifacius
2022-23 Men's Basketball

Officials:

Game Time	CRO	Score	Diff	GUS
12:15	2 WHITE J 2pt FG fast break from turnover in the paint, layup made (4)	60-40	20	
12:07				10 ZAMMIT J 2pt FG outside the paint, jump shot missed
12:04				23 KELLEN D offensive rebound (2)
12:04	12 BEHNE C foul personal (4 - 6)			10 ZAMMIT J foul drawn (1)
12:04	12 BEHNE C substitution out			
12:04	31 VAN DAM J substitution out			
12:04	10 MASEK J substitution in			
12:04	11 LADD M substitution in			
12:02				21 SWANSON S 2pt FG second chance in the paint, jump shot missed
12:02				21 SWANSON S offensive rebound (4)
12:02	10 MASEK J foul shooting (2 - 7)			21 SWANSON S foul drawn (4)
12:03				21 SWANSON S free throw 1 - 2 missed
12:03				offensive dead ball rebound (7)
12:03				21 SWANSON S free throw 2 - 2 missed
12:03	21 ROYSTON S defensive rebound (3)			
11:49	21 ROYSTON S 3pt FG , jump shot missed			
11:46				21 SWANSON S defensive rebound (5)
11:25		60-42	18	21 SWANSON S 2pt FG outside the paint, jump shot made (9)
11:25				5 MCGRAW C assist (3)
11:10	2 WHITE J 3pt FG , jump shot missed			
11:07				22 BIEWEN A defensive rebound (7)
11:00				21 SWANSON S 2pt FG outside the paint, jump shot missed
10:57	21 ROYSTON S defensive rebound (4)			
10:47	10 MASEK J foul drawn (3)			5 MCGRAW C foul personal (1 - 4)
10:47	20 TESTERMAN A substitution out			
10:47	31 VAN DAM J substitution in			
10:40	2 WHITE J turnover travel (1)			
10:26				22 BIEWEN A 3pt FG from turnover, jump shot missed
10:22	31 VAN DAM J defensive rebound (7)			
10:15	21 ROYSTON S foul drawn (2)			5 MCGRAW C foul personal (2 - 5)
10:07	10 MASEK J 2pt FG outside the paint, jump shot missed			
10:02	10 MASEK J offensive rebound (3)			
10:00	2 WHITE J 2pt FG second chance outside the paint, jump shot made (6)	62-42	20	
10:00	10 MASEK J assist (5)			
09:47	11 LADD M foul drawn (2)			10 ZAMMIT J foul offensive (3 - 6)
09:47				10 ZAMMIT J turnover offensive (2)
09:47	21 ROYSTON S substitution out			
09:47	55 EBELING P substitution in			
09:36	31 VAN DAM J 2pt FG from turnover outside the paint, jump shot made (7)	64-42	22	
09:36	11 LADD M assist (5)			
09:24	55 EBELING P foul shooting (4 - 8)			5 MCGRAW C foul drawn (2)
09:24		64-43	21	5 MCGRAW C free throw 1 - 2 made (1)
09:24	55 EBELING P substitution out			
09:24	21 ROYSTON S substitution in			
09:24		64-44	20	5 MCGRAW C free throw 2 - 2 made (2)
09:24				Timeout 30 Sec

**Gust. Adolphus at Crown (MN)**11/15/22 Athletic Center, Saint Bonifacius
2022-23 Men's Basketball

Game Time: 7:00 PM

Game Duration: 1:40

Attendance: 187

Officials:

Game Time	CRO	Score	Diff	GUS
09:16	2 WHITE J foul drawn (1)			22 BIEWEN A foul shooting (1 - 7)
09:16	2 WHITE J 1&1 free throw 1 made (7)	65-44	21	
09:16	2 WHITE J 1&1 free throw 2 made (8)	66-44	22	
08:54	31 VAN DAM J foul shooting (3 - 9)			22 BIEWEN A foul drawn (5)
08:54		66-45	21	22 BIEWEN A free throw 1 - 2 made (19)
08:54				22 BIEWEN A free throw 2 - 2 missed
08:53	21 ROYSTON S defensive rebound (5)			
08:36	21 ROYSTON S 2pt FG in the paint, jump shot made (7)	68-45	23	
08:36	2 WHITE J assist (6)			
08:26		68-48	20	5 MCGRAW C 3pt FG , jump shot made (5)
08:11	11 LADD M turnover lost ball (3)			21 SWANSON S steal (2)
08:06		68-50	18	21 SWANSON S 2pt FG from turnover in the paint, jump shot made (11)
07:52	2 WHITE J 2pt FG in the paint, jump shot missed			
07:52	offensive dead ball rebound (3)			
07:52				10 ZAMMIT J substitution out
07:52				4 WIEKER E substitution in
07:39	21 ROYSTON S 2pt FG second chance in the paint, jump shot made (9)	70-50	20	
07:39	11 LADD M assist (6)			
07:26				5 MCGRAW C 2pt FG outside the paint, jump shot missed
07:22	2 WHITE J defensive rebound (1)			
06:58	21 ROYSTON S 2pt FG outside the paint, jump shot made (11)	72-50	22	
06:46		72-53	19	21 SWANSON S 3pt FG , jump shot made (14)
06:46				22 BIEWEN A assist (3)
06:30	31 VAN DAM J 3pt FG , jump shot missed			
06:26				4 WIEKER E defensive rebound (7)
06:12				4 WIEKER E 2pt FG outside the paint, jump shot missed
06:11				offensive dead ball rebound (8)
06:11	10 MASEK J foul shooting (3 - 10)			21 SWANSON S foul drawn (5)
06:11		72-54	18	21 SWANSON S free throw 1 - 2 made (15)
06:11	2 WHITE J substitution out			
06:11	31 VAN DAM J substitution out			
06:11	12 BEHNE C substitution in			
06:11	20 TESTERMAN A substitution in			
06:11				23 KELLEN D substitution out
06:11				32 GUSE J substitution in
06:11		72-55	17	21 SWANSON S free throw 2 - 2 made (16)
05:58	10 MASEK J turnover bad pass (1)			
05:59	Timeout 30 Sec			
05:51				5 MCGRAW C 3pt FG from turnover, jump shot missed
05:48				21 SWANSON S offensive rebound (6)
05:48	21 ROYSTON S foul shooting (3 - 11)			32 GUSE J foul drawn (2)
05:48		72-56	16	32 GUSE J free throw 1 - 2 made (7)
05:48		72-57	15	32 GUSE J free throw 2 - 2 made (8)
05:18	10 MASEK J 2pt FG in the paint, jump shot missed			
05:15				4 WIEKER E defensive rebound (8)
05:06		72-60	12	22 BIEWEN A 3pt FG , jump shot made (22)
05:06				21 SWANSON S assist (2)
04:34	21 ROYSTON S 3pt FG , jump shot missed			



Gust. Adolphus at Crown (MN)

11/15/22 Athletic Center, Saint Bonifacius
2022-23 Men's Basketball

Game Time: 7:00 PM
Game Duration: 1:40
Attendance: 187

Officials:

Game Time	CRO	Score	Diff	GUS
04:30				22 BIEWEN A defensive rebound (8)
04:19		72-62	10	21 SWANSON S 2pt FG in the paint, jump shot made (18)
04:19				32 GUSE J assist (5)
04:01	Timeout 60 Sec			
04:01	21 ROYSTON S foul personal (4 - 12)			22 BIEWEN A foul drawn (6)
04:01		72-63	9	22 BIEWEN A free throw 1 - 2 made (23)
04:01				22 BIEWEN A free throw 2 - 2 missed
04:01	defensive dead ball rebound (4)			
03:51	11 LADD M foul drawn (3)			5 MCGRAW C foul personal (3 - 8)
03:51	11 LADD M 1&1 free throw 1 missed			
03:51				21 SWANSON S defensive rebound (7)
03:40	20 TESTERMAN A foul personal (1 - 13)			21 SWANSON S foul drawn (6)
03:40		72-64	8	21 SWANSON S free throw 1 - 2 made (19)
03:40	20 TESTERMAN A substitution out			
03:40	2 WHITE J substitution in			
03:40		72-65	7	21 SWANSON S free throw 2 - 2 made (20)
03:19	10 MASEK J substitution out			
03:19	31 VAN DAM J substitution in			
03:19	31 VAN DAM J 2pt FG in the paint, jump shot made (9)	74-65	9	
03:19	31 VAN DAM J foul drawn (2)			32 GUSE J foul personal (1 - 9)
03:19	31 VAN DAM J free throw 1 - 1 made (10)	75-65	10	
03:02				32 GUSE J 2pt FG in the paint, jump shot missed
03:00				32 GUSE J offensive rebound (2)
02:59		75-67	8	4 WIEKER E 2pt FG second chance in the paint, jump shot made (5)
02:59				32 GUSE J assist (6)
02:47	11 LADD M foul drawn (4)			21 SWANSON S foul personal (1 - 10)
02:47	11 LADD M free throw 1 - 2 made (6)	76-67	9	
02:47	11 LADD M free throw 2 - 2 missed			
02:47				21 SWANSON S defensive rebound (8)
02:32		76-69	7	4 WIEKER E 2pt FG in the paint, jump shot made (7)
02:32				22 BIEWEN A assist (4)
02:31				Timeout 60 Sec
02:25	31 VAN DAM J turnover lost ball (1)			21 SWANSON S steal (3)
02:24				Timeout 60 Sec
02:04				4 WIEKER E 2pt FG from turnover outside the paint, jump shot missed
02:00				21 SWANSON S offensive rebound (9)
01:59				21 SWANSON S 2pt FG from turnover second chance in the paint, jump shot missed
01:54	2 WHITE J defensive rebound (2)			
01:38	2 WHITE J turnover lost ball (2)			22 BIEWEN A steal (1)
01:19				21 SWANSON S 2pt FG from turnover outside the paint, jump shot missed
01:16	21 ROYSTON S defensive rebound (6)			
01:07	31 VAN DAM J 2pt FG in the paint, layup made (12)	78-69	9	
01:07	12 BEHNE C assist (2)			
00:53				5 MCGRAW C 3pt FG , jump shot missed
00:39	11 LADD M defensive rebound (2)			
00:38	11 LADD M substitution out			



Gust. Adolphus at Crown (MN)

11/15/22 Athletic Center, Saint Bonifacius
2022-23 Men's Basketball

Game Time: 7:00 PM
Game Duration: 1:40
Attendance: 187

Officials:

Game Time	CRO	Score	Diff	GUS
00:38	10 MASEK J substitution in			
00:31	31 VAN DAM J foul drawn (3)			21 SWANSON S foul personal (2 - 11)
00:31	31 VAN DAM J free throw 1 - 2 made (13)	79-69	10	
00:31				4 WIEKER E substitution out
00:31				32 GUSE J substitution out
00:31				1 KIENITZ B substitution in
00:31				3 SCHOMMER J substitution in
00:31	31 VAN DAM J free throw 2 - 2 made (14)	80-69	11	
00:25				1 KIENITZ B 2pt FG in the paint, jump shot missed
00:19	12 BEHNE C defensive rebound (3)			
00:20	Timeout 60 Sec			
00:17	2 WHITE J 2pt FG fast break outside the paint, jump shot made (10)	82-69	13	
00:17	21 ROYSTON S assist (1)			
00:18	2 WHITE J foul drawn (2)			5 MCGRAW C foul shooting (4 - 12)
00:18	2 WHITE J free throw fast break 1 - 1 made (11)	83-69	14	
00:18	2 WHITE J substitution out			
00:18	11 LADD M substitution in			
00:12		83-71	12	5 MCGRAW C 2pt FG in the paint, layup made (7)
00:12	11 LADD M foul personal (2 - 14)			5 MCGRAW C foul drawn (3)
00:12		83-72	11	5 MCGRAW C free throw 1 - 1 made (8)
00:03	21 ROYSTON S turnover lost ball (1)			21 SWANSON S steal (4)
00:03		83-75	8	21 SWANSON S 3pt FG from turnover, jump shot made (23)
END OF GAME				
CRO 83-75 GUS				



Gust. Adolphus at Crown (MN)

11/15/22 Athletic Center, Saint Bonifacius
2022-23 Men's Basketball

Game Time: 7:00 PM
Game Duration: 1:40
Attendance: 187

Officials:

Gust. Adolphus - 48

NO.	Name	F	Min	FG			Rebounds			Fouls		TP	AS	TO	ST	Blocks		+/-
				M-A	M-A	M-A	OR	DR	TOT	PF	FD					BS	BA	
4	Evan Wieker	F	10:33	2-4	0-0	0-0	0	3	3	1	0	4	1	1	0	0	0	9
21	Spencer Swanson	F	20:00	7-13	3-5	4-6	3	5	8	2	4	21	1	0	4	0	0	14
22	Adam Biewen	F	20:00	3-5	1-2	4-8	2	2	4	1	6	11	2	0	1	0	0	14
32	Jake Guse	C	12:37	1-2	0-0	2-2	1	0	1	1	1	4	3	0	0	0	0	12
3	Jordan Schommer	G	04:46	0-0	0-0	0-0	0	0	0	2	0	0	0	0	0	0	0	5
1	Brady Kienitz		04:16	0-2	0-1	0-0	0	0	0	0	0	0	0	2	1	0	0	5
5	Cade McGraw		14:54	2-5	1-3	3-3	0	1	1	4	2	8	2	1	0	0	0	9
10	Jack Zammit		06:02	0-1	0-0	0-0	0	0	0	1	1	0	0	1	0	0	0	2
23	Dawson Kellen		06:52	0-0	0-0	0-0	2	0	2	0	0	0	0	0	0	0	0	0
Team							0	0	0			0		0				
Totals				15-32	5-11	13-19	8	11	19	12	14	48	9	5	6	0	0	14

Shooting By Period		
2 nd FG%	15-32	46.9%
3PT%	5-11	45.5%
FT%	13-19	68.4%
GM FG%	15-32	46.9%
3PT%	5-11	45.5%
FT%	13-19	68.4%

Dead Ball Rebounds: 3, 1

Technical Fouls::NONE

Crown (MN) - 34

NO.	Name	F	Min	FG			Rebounds			Fouls		TP	AS	TO	ST	Blocks		+/-
				M-A	M-A	M-A	OR	DR	TOT	PF	FD					BS	BA	
14	Cade Carroll	F	00:00	0-0	0-0	0-0	0	0	0	0	0	0	0	0	0	0	0	0
21	Seth Royston	F	18:31	4-8	1-4	0-0	0	4	4	2	1	9	1	1	0	0	0	-13
31	Jacob Van Dam	F	15:51	4-7	0-2	3-3	2	2	4	3	2	11	0	1	0	0	0	-1
11	Micah Ladd	G	18:03	1-2	0-1	1-3	0	1	1	2	4	3	3	2	1	0	0	-21
20	Alec Testerman	G	11:44	1-2	0-0	0-0	0	1	1	1	1	2	1	1	0	0	0	-14
10	Jacob Masek		15:44	0-5	0-2	0-0	1	0	1	2	2	0	3	1	0	0	0	-18
55	PJ Ebeling		01:29	0-0	0-0	0-0	1	0	1	2	0	0	0	0	0	0	0	-1
2	Jahmar White		10:51	3-5	0-1	3-3	0	2	2	0	2	9	1	2	0	0	0	6
12	Carter Behne		07:47	0-0	0-0	0-0	0	1	1	2	0	0	1	0	2	0	0	-8
Team							0	0	0			0		0				
Totals				13-29	1-10	7-9	4	11	15	14	12	34	10	8	3	0	0	-14

Shooting By Period		
2 nd FG%	13-29	44.8%
3PT%	1-10	10.0%
FT%	7-9	77.8%
GM FG%	13-29	44.8%
3PT%	1-10	10.0%
FT%	7-9	77.8%

Dead Ball Rebounds: 2, 1

Technical Fouls::NONE

	GUS	CRO
Biggest lead	0 (1 st 20:00)	23 (2 nd 8:36)
Best Scoring Run	15(2 nd 3:40)	7(2 nd 0:18)
Lead Changes	0	
Times Tied	0	
Time with Lead	00:00	19:57

Points from	GUS	CRO
Turnovers	9	6
Paint	18	12
Second Chance	10	4
Fast Breaks	2	9
Bench	8	9

	Period by Period Scoring		
	1st	2nd	TOT
GUS	27	48	75
CRO	49	34	83



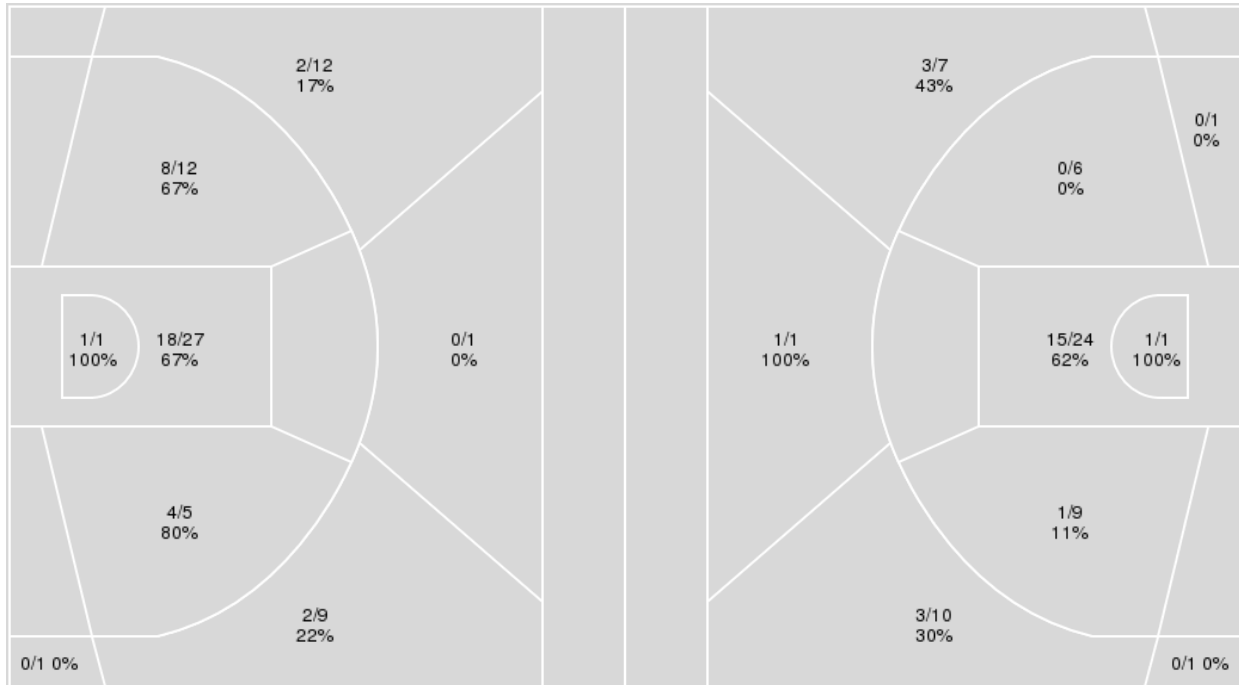
Officials:

{ Players => All; } FG Types => All; Results => All;

{ Players => All; } FG Types => All; Results => All;

Crown (MN)

Gust. Adolphus



Crown (MN)	M/A	%
Field Goals	35/68	51
2 Points	31/45	69
3 Points	4/23	17
Free Throws	9/12	75

Gust. Adolphus	M/A	%
Field Goals	24/60	40
2 Points	17/41	41
3 Points	7/19	37
Free Throws	20/27	74



Gust. Adolphus at Crown (MN)

11/15/22 Athletic Center, Saint Bonifacius
2022-23 Men's Basketball

Game Time: 7:00 PM
Game Duration: 1:40
Attendance: 187

Officials:

Gust. Adolphus

No	Name	Mins		Score		Points Diff		Points per Min		Assists		Rebounds		Steals		Turnovers	
		On	Off	On	Off	On	Off	On	Off	On	Off	On	Off	On	Off	On	Off
1	Brady Kienitz	11:59	28:01	26 - 28	49 - 55	-2	-6	2.17	1.75	5	12	13	24	3	3	5	11
2	Cam Anderson	02:20	37:40	6 - 10	69 - 73	-4	-4	2.57	1.83	2	15	1	36	0	6	1	15
3	Jordan Schommer	20:37	19:23	33 - 47	42 - 36	-14	6	1.60	2.17	7	10	18	19	2	4	11	5
4	Evan Wieker	23:28	16:32	38 - 45	37 - 38	-7	-1	1.62	2.24	10	7	24	13	2	4	9	7
5	Cade McGraw	24:23	15:37	47 - 56	28 - 27	-9	1	1.93	1.79	12	5	22	15	5	1	8	8
10	Jack Zammit	11:52	28:08	26 - 21	49 - 62	5	-13	2.19	1.74	4	13	14	23	1	5	3	13
21	Spencer Swanson	35:27	04:33	68 - 71	7 - 12	-3	-5	1.92	1.54	15	2	30	7	6	0	15	1
22	Adam Biewen	36:25	03:35	72 - 74	3 - 9	-2	-6	1.98	0.84	16	1	31	6	6	0	15	1
23	Dawson Kellen	10:52	29:08	16 - 24	59 - 59	-8	0	1.47	2.03	3	14	9	28	1	5	5	11
32	Jake Guse	22:37	17:23	43 - 39	32 - 44	4	-12	1.90	1.84	11	6	23	14	4	2	8	8

Crown (MN)

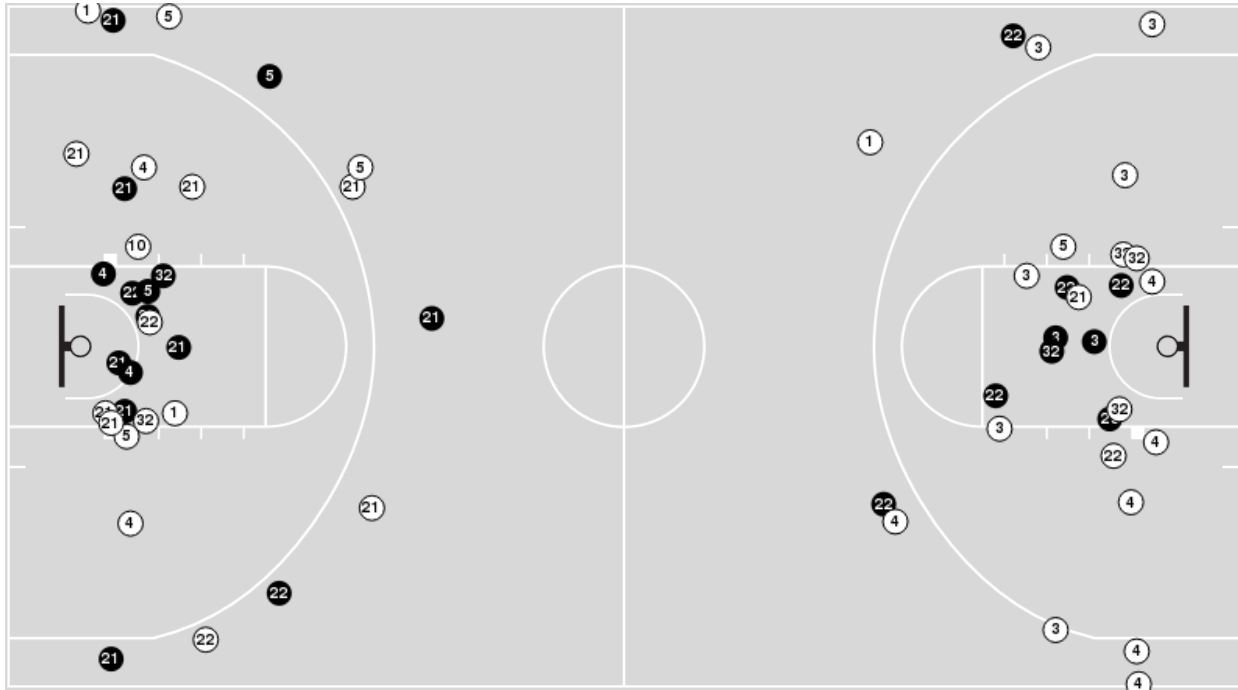
No	Name	Mins		Score		Points Diff		Points per Min		Assists		Rebounds		Steals		Turnovers	
		On	Off	On	Off	On	Off	On	Off	On	Off	On	Off	On	Off	On	Off
2	Jahmar White	16:42	23:18	41 - 24	42 - 51	17	-9	2.46	1.80	13	14	17	13	4	8	5	4
10	Jacob Masek	24:16	15:44	50 - 49	33 - 26	1	7	2.06	2.10	18	9	19	11	5	7	5	4
11	Micah Ladd	32:17	07:43	60 - 70	23 - 5	-10	18	1.86	2.98	19	8	22	8	8	4	8	1
12	Carter Behne	16:55	23:05	38 - 37	45 - 38	1	7	2.25	1.95	10	17	11	19	5	7	5	4
14	Cade Carroll	12:08	27:52	28 - 14	55 - 61	14	-6	2.31	1.97	11	16	10	20	6	6	1	8
20	Alec Testerman	26:42	13:18	46 - 49	37 - 26	-3	11	1.72	2.78	16	11	18	12	10	2	4	5
21	Seth Royston	29:07	10:53	58 - 49	25 - 26	9	-1	1.99	2.30	17	10	24	6	9	3	9	0
31	Jacob Van Dam	31:00	09:00	69 - 57	14 - 18	12	-4	2.23	1.56	21	6	23	7	10	2	8	1
55	PJ Ebeling	10:53	29:07	25 - 26	58 - 49	-1	9	2.30	1.99	10	17	6	24	3	9	0	9



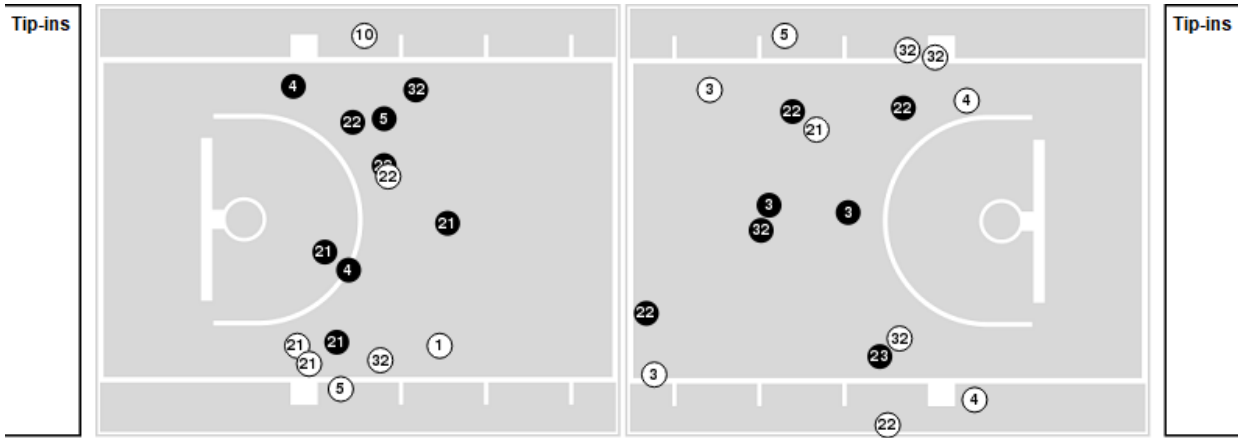
Officials:

Players => AllFG Types=>AllResults=>All
Gust. Adolphus

All Field Goals



Blow Up Chart



● Made ○ Missed N - Player Number

Gust. Adolphus	M/A	%
Field Goals	24/60	40
2 Points	17/41	41
3 Points	7/19	37
Free Throws	20/27	74

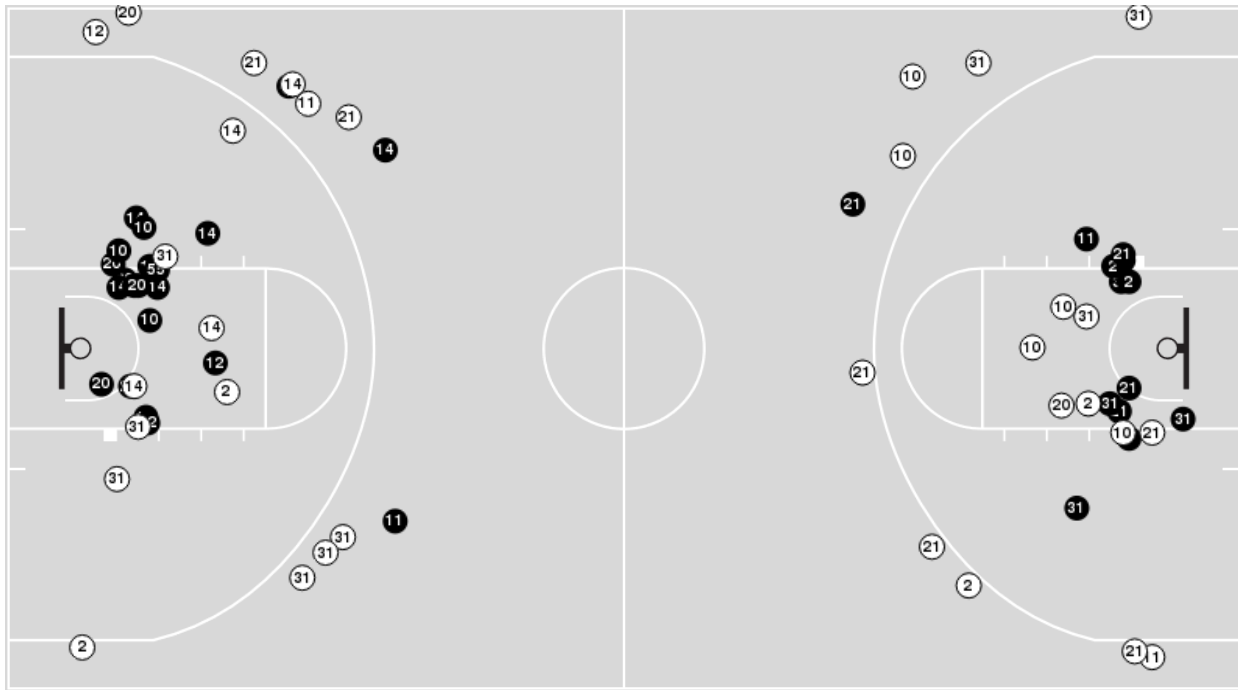
Gust. Adolphus	M/A	%
Points in the Paint	32 (16 / 25)	64
Fast Break Points	2 (1/3)	33
Second Chance Points	11 (8/16)	50
Effective FG%	46	



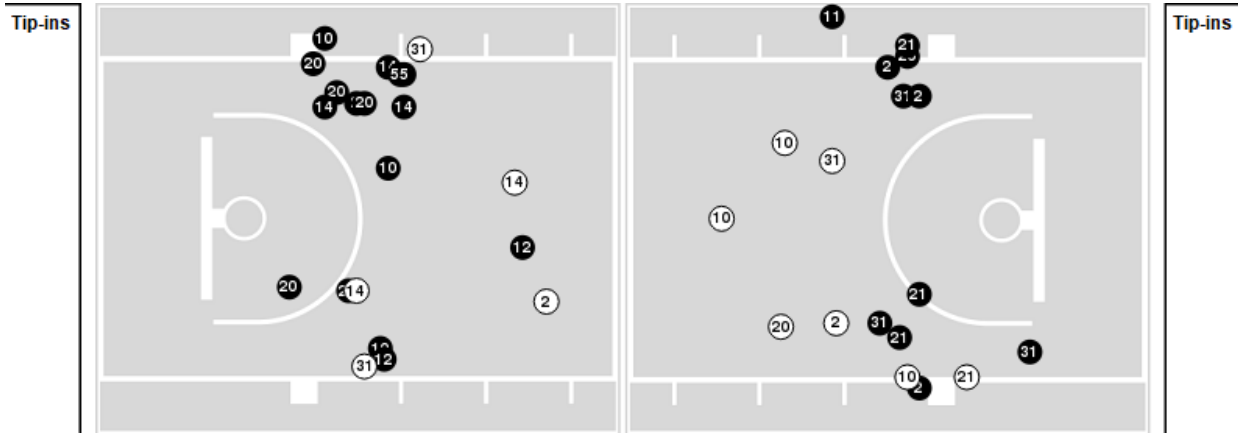
Officials:

Players => AllFG Types=>AllResults=>All
Crown (MN)

All Field Goals



Blow Up Chart



● Made ○ Missed N - Player Number

Crown (MN)	M/A	%
Field Goals	35/68	51
2 Points	31/45	69
3 Points	4/23	17
Free Throws	9/12	75

Crown (MN)	M/A	%
Points in the Paint	38 (19 / 28)	68
Fast Break Points	17 (10/10)	100
Second Chance Points	8 (4/7)	57
Effective FG%	54	



Gust. Adolphus at Crown (MN)

11/15/22 Athletic Center, Saint Bonifacius
2022-23 Men's Basketball

Game Time: 7:00 PM
Game Duration: 1:40
Attendance: 187

Officials:

Gust. Adolphus

Lineup	Quarter On	Time On	Quarter Off	Time Off	Time on Court	Score	Score Diff	Reb	Stl	Tov	Ass	PPP
3- Schommer J/ 4- Wieker E/ 21- Swanson S/ 22- Biewen A/ 32- Guse J/	1	20:00	1	15:30	04:30	3-12	-9	3	0	4	1	0.3333
3- Schommer J/ 4- Wieker E/ 21- Swanson S/ 22- Biewen A/ 23- Kellen D/	1	15:30	1	15:18	00:12	0-0	0	0	0	1	0	0.0000
3- Schommer J/ 5- McGraw C/ 21- Swanson S/ 22- Biewen A/ 23- Kellen D/	1	15:18	1	14:43	00:35	0-0	0	0	0	0	0	0.0000
1- Kienitz B/ 5- McGraw C/ 21- Swanson S/ 22- Biewen A/ 23- Kellen D/	1	14:43	1	12:57	01:46	0-3	-3	1	0	1	0	0.0000
1- Kienitz B/ 3- Schommer J/ 4- Wieker E/ 5- McGraw C/ 23- Kellen D/	1	12:58	1	11:30	01:28	2-6	-4	2	0	1	1	0.5000
1- Kienitz B/ 4- Wieker E/ 5- McGraw C/ 22- Biewen A/ 23- Kellen D/	1	12:57	1	12:58	00:01	0-1	-1	0	0	0	0	0.0000
1- Kienitz B/ 3- Schommer J/ 4- Wieker E/ 5- McGraw C/ 32- Guse J/	1	11:30	1	10:27	01:03	0-0	0	3	0	0	0	0.0000
1- Kienitz B/ 3- Schommer J/ 4- Wieker E/ 10- Zammit J/ 32- Guse J/	1	10:27	1	09:23	01:04	1-3	-2	1	0	0	0	0.6944
3- Schommer J/ 4- Wieker E/ 10- Zammit J/ 21- Biewen A/ 32- Guse J/	1	09:23	1	08:24	00:59	4-2	2	1	0	0	1	2.1277
3- Schommer J/ 4- Wieker E/ 10- Zammit J/ 21- Swanson S/ 22- Biewen A/	1	08:24	1	07:01	01:23	2-0	2	3	0	0	0	2.0000
3- Schommer J/ 4- Wieker E/ 5- McGraw C/ 21- Swanson S/ 22- Biewen A/	1	07:01	1	04:44	02:17	2-6	-4	1	0	2	1	0.4000
2- Anderson C/ 3- Schommer J/ 5- McGraw C/ 21- Swanson S/ 22- Biewen A/	1	04:44	1	02:23	02:21	4-10	-6	1	0	1	2	1.0000
1- Kienitz B/ 10- Zammit J/ 21- Swanson S/ 22- Biewen A/ 32- Guse J/	1	02:24	2	19:09	03:15	9-6	3	4	0	1	2	1.8443
1- Kienitz B/ 2- Anderson C/ 3- Schommer J/ 21- Swanson S/ 22- Biewen A/	1	02:23	1	02:24	00:01	2-0	2	0	0	0	0	2.2727
3- Schommer J/ 4- Wieker E/ 21- Swanson S/ 22- Biewen A/ 32- Guse J/	2	19:09	2	15:57	03:12	5-4	1	2	0	1	1	1.2887
1- Kienitz B/ 3- Schommer J/ 21- Swanson S/ 22- Biewen A/ 32- Guse J/	2	15:57	2	14:54	01:03	2-0	2	1	1	1	0	1.0000
1- Kienitz B/ 5- McGraw C/ 21- Swanson S/ 22- Biewen A/ 32- Guse J/	2	14:54	2	13:03	01:51	4-5	-1	1	1	1	2	1.3333
5- McGraw C/ 10- Zammit J/ 21- Swanson S/ 22- Biewen A/ 23- Kellen D/	2	13:03	2	07:52	05:11	10-10	0	5	1	2	1	0.9506
4- Wieker E/ 5- McGraw C/ 21- Swanson S/ 22- Biewen A/ 23- Kellen D/	2	07:52	2	06:11	01:41	4-4	0	1	0	0	1	1.1628
4- Wieker E/ 5- McGraw C/ 21- Swanson S/ 22- Biewen A/ 32- Guse J/	2	06:11	2	00:31	05:40	15-7	8	7	2	0	4	1.4881
1- Kienitz B/ 3- Schommer J/ 5- McGraw C/ 21- Swanson S/ 22- Biewen A/	2	00:31	2	00:00	00:31	6-4	2	0	1	0	0	1.7442



Gust. Adolphus at Crown (MN)

11/15/22 Athletic Center, Saint Bonifacius
2022-23 Men's Basketball

Game Time: 7:00 PM
Game Duration: 1:40
Attendance: 187

Officials:

Crown (MN)

Lineup	Quarter On	Time On	Quarter Off	Time Off	Time on Court	Score	Score Diff	Reb	Stl	Tov	Ass	PPP
11- Ladd M/ 14- Carroll C/ 20- Testerman A/ 21- Royston S/ 31- Van Dam J/	1	20:00	1	15:00	05:00	12-3	9	5	4	1	4	1.2000
10- Masek J/ 11- Ladd M/ 20- Testerman A/ 31- Van Dam J/ 55- Ebeling P/	1	15:00	1	12:57	02:03	3-0	3	2	1	0	1	0.8721
2- White J/ 10- Masek J/ 14- Carroll C/ 20- Testerman A/ 55- Ebeling P/	1	12:57	1	11:30	01:27	7-2	5	2	1	0	3	1.5766
2- White J/ 10- Masek J/ 14- Carroll C/ 20- Testerman A/ 21- Royston S/	1	11:30	1	11:30	00:00	0-0	0	0	0	0	0	0.0000
2- White J/ 10- Masek J/ 12- Behne C/ 14- Carroll C/ 21- Royston S/	1	11:30	1	09:28	02:02	3-1	2	1	0	0	1	1.5000
11- Ladd M/ 14- Carroll C/ 20- Testerman A/ 31- Van Dam J/ 55- Ebeling P/	1	09:28	1	07:06	02:22	2-6	-4	0	0	0	1	0.5000
2- White J/ 10- Masek J/ 11- Ladd M/ 12- Behne C/ 21- Royston S/	1	07:06	1	07:01	00:05	0-0	0	0	0	0	0	0.0000
2- White J/ 10- Masek J/ 12- Behne C/ 14- Carroll C/ 21- Royston S/	1	07:01	1	05:44	01:17	4-2	2	2	1	0	2	2.0000
2- White J/ 10- Masek J/ 12- Behne C/ 21- Royston S/ 31- Van Dam J/	1	05:44	1	04:44	01:00	2-0	2	1	0	0	1	1.0000
10- Masek J/ 11- Ladd M/ 12- Behne C/ 21- Royston S/ 31- Van Dam J/	1	04:44	1	04:06	00:38	5-0	5	0	1	0	1	2.5000
11- Ladd M/ 12- Behne C/ 20- Testerman A/ 21- Royston S/ 31- Van Dam J/	1	04:06	1	03:32	00:34	2-0	2	1	0	0	0	2.0000
11- Ladd M/ 12- Behne C/ 20- Testerman A/ 31- Van Dam J/ 55- Ebeling P/	1	03:32	2	20:00	03:32	9-13	-4	1	1	0	3	1.3975
10- Masek J/ 11- Ladd M/ 20- Testerman A/ 21- Royston S/ 31- Van Dam J/	2	20:00	2	17:12	02:48	2-3	-1	3	1	0	1	0.5000
10- Masek J/ 11- Ladd M/ 20- Testerman A/ 31- Van Dam J/ 55- Ebeling P/	2	17:12	2	16:06	01:06	2-4	-2	1	0	0	1	1.0000
10- Masek J/ 11- Ladd M/ 20- Testerman A/ 21- Royston S/ 31- Van Dam J/	2	16:06	2	13:40	02:26	5-6	-1	0	0	1	2	1.2500
11- Ladd M/ 12- Behne C/ 20- Testerman A/ 21- Royston S/ 31- Van Dam J/	2	13:40	2	13:40	00:00	0-0	0	0	0	0	0	0.0000
2- White J/ 12- Behne C/ 20- Testerman A/ 21- Royston S/ 31- Van Dam J/	2	13:40	2	12:04	01:36	2-0	2	1	2	1	0	0.6667
2- White J/ 10- Masek J/ 11- Ladd M/ 20- Testerman A/ 21- Royston S/	2	12:04	2	10:47	01:17	0-2	-2	2	0	0	0	0.0000
2- White J/ 10- Masek J/ 11- Ladd M/ 21- Royston S/ 31- Van Dam J/	2	10:47	2	09:47	01:00	2-0	2	2	0	1	1	1.0000
2- White J/ 10- Masek J/ 11- Ladd M/ 31- Van Dam J/ 55- Ebeling P/	2	09:47	2	09:24	00:23	2-1	1	0	0	0	1	2.0000
2- White J/ 10- Masek J/ 11- Ladd M/ 21- Royston S/ 31- Van Dam J/	2	09:24	2	06:11	03:13	8-11	-3	2	0	1	2	1.1628
10- Masek J/ 11- Ladd M/ 12- Behne C/ 20- Testerman A/ 21- Royston S/	2	06:11	2	03:40	02:31	0-10	-10	0	0	1	0	0.0000
2- White J/ 10- Masek J/ 11- Ladd M/ 12- Behne C/ 21- Royston S/	2	03:40	2	03:19	00:21	0-1	-1	0	0	0	0	0.0000
2- White J/ 11- Ladd M/ 12- Behne C/ 21- Royston S/ 31- Van Dam J/	2	03:19	2	00:38	02:40	6-4	2	3	0	2	1	1.1278
2- White J/ 10- Masek J/ 12- Behne C/ 21- Royston S/ 31- Van Dam J/	2	00:38	2	00:18	00:21	5-0	5	1	0	0	1	2.1552
10- Masek J/ 11- Ladd M/ 12- Behne C/ 21- Royston S/ 31- Van Dam J/	2	00:18	2	00:00	00:18	0-6	-6	0	0	1	0	0.0000



Officials:

Gust. Adolphus

Lineup	Time	Score	Score Diff	Pts/Min	Reb	Stl	Tov	Ass	PPP
3- Schommer J/ 4- Wieker E/ 21- Swanson S/ 22- Biewen A/ 32- Guse J/	07:42	8-16	-8	1.0390	5	0	5	2	0.6211
4- Wieker E/ 5- McGraw C/ 21- Swanson S/ 22- Biewen A/ 32- Guse J/	05:40	15-7	8	2.6471	7	2	0	4	1.4881
5- McGraw C/ 10- Zammit J/ 21- Swanson S/ 22- Biewen A/ 23- Kellen D/	05:11	10-10	0	1.9293	5	1	2	1	0.9506
1- Kienitz B/ 10- Zammit J/ 21- Swanson S/ 22- Biewen A/ 32- Guse J/	03:15	9-6	3	2.7692	4	0	1	2	1.8443
2- Anderson C/ 3- Schommer J/ 5- McGraw C/ 21- Swanson S/ 22- Biewen A/	02:21	4-10	-6	1.7021	1	0	1	2	1.0000
3- Schommer J/ 4- Wieker E/ 5- McGraw C/ 21- Swanson S/ 22- Biewen A/	02:17	2-6	-4	0.8759	1	0	2	1	0.4000
1- Kienitz B/ 5- McGraw C/ 21- Swanson S/ 22- Biewen A/ 32- Guse J/	01:51	4-5	-1	2.1622	1	1	1	2	1.3333
1- Kienitz B/ 5- McGraw C/ 21- Swanson S/ 22- Biewen A/ 23- Kellen D/	01:46	0-3	-3	0.0000	1	0	1	0	0.0000
4- Wieker E/ 5- McGraw C/ 21- Swanson S/ 22- Biewen A/ 23- Kellen D/	01:41	4-4	0	2.3762	1	0	0	1	1.1628
1- Kienitz B/ 3- Schommer J/ 4- Wieker E/ 5- McGraw C/ 23- Kellen D/	01:28	2-6	-4	1.3636	2	0	1	1	0.5000
3- Schommer J/ 4- Wieker E/ 10- Zammit J/ 21- Swanson S/ 22- Biewen A/	01:23	2-0	2	1.4458	3	0	0	0	2.0000
1- Kienitz B/ 3- Schommer J/ 4- Wieker E/ 10- Zammit J/ 32- Guse J/	01:04	1-3	-2	0.9375	1	0	0	0	0.6944
1- Kienitz B/ 3- Schommer J/ 4- Wieker E/ 5- McGraw C/ 32- Guse J/	01:03	0-0	0	0.0000	3	0	0	0	0.0000
1- Kienitz B/ 3- Schommer J/ 21- Swanson S/ 22- Biewen A/ 32- Guse J/	01:03	2-0	2	1.9048	1	1	1	0	1.0000
3- Schommer J/ 4- Wieker E/ 10- Zammit J/ 22- Biewen A/ 32- Guse J/	00:59	4-2	2	4.0678	1	0	0	1	2.1277
3- Schommer J/ 5- McGraw C/ 21- Swanson S/ 22- Biewen A/ 23- Kellen D/	00:35	0-0	0	0.0000	0	0	0	0	0.0000
1- Kienitz B/ 3- Schommer J/ 5- McGraw C/ 21- Swanson S/ 22- Biewen A/	00:31	6-4	2	11.6129	0	1	0	0	1.7442
3- Schommer J/ 4- Wieker E/ 21- Swanson S/ 22- Biewen A/ 23- Kellen D/	00:12	0-0	0	0.0000	0	0	1	0	0.0000
1- Kienitz B/ 4- Wieker E/ 5- McGraw C/ 22- Biewen A/ 23- Kellen D/	00:01	0-1	-1	0.0000	0	0	0	0	0.0000
1- Kienitz B/ 2- Anderson C/ 3- Schommer J/ 21- Swanson S/ 22- Biewen A/	00:01	2-0	2	-120.0000	0	0	0	0	2.2727



Official Basketball Line Up Analysis - Final
Gust. Adolphus at Crown (MN)
 11/15/22 Athletic Center, Saint Bonifacius
 2022-23 Men's Basketball

Game Time: 7:00 PM
 Game Duration: 1:40
 Attendance: 187

Officials:

Crown (MN)

Lineup	Time	Score	Score Diff	Pts/Min	Reb	Stl	Tov	Ass	PPP
10- Masek J/ 11- Ladd M/ 20- Testerman A/ 21- Royston S/ 31- Van Dam J/	05:14	7-9	-2	1.3376	3	1	1	3	0.8750
11- Ladd M/ 14- Carroll C/ 20- Testerman A/ 21- Royston S/ 31- Van Dam J/	05:00	12-3	9	2.4000	5	4	1	4	1.2000
2- White J/ 10- Masek J/ 11- Ladd M/ 21- Royston S/ 31- Van Dam J/	04:13	10-11	-1	2.3715	4	0	2	3	1.1261
11- Ladd M/ 12- Behne C/ 20- Testerman A/ 31- Van Dam J/ 55- Ebeling P/	03:32	9-13	-4	2.5472	1	1	0	3	1.3975
2- White J/ 10- Masek J/ 12- Behne C/ 14- Carroll C/ 21- Royston S/	03:19	7-3	4	2.1106	3	1	0	3	1.7500
10- Masek J/ 11- Ladd M/ 20- Testerman A/ 31- Van Dam J/ 55- Ebeling P/	03:09	5-4	1	1.5873	3	1	0	2	0.9191
2- White J/ 11- Ladd M/ 12- Behne C/ 21- Royston S/ 31- Van Dam J/	02:40	6-4	2	2.2500	3	0	2	1	1.1278
10- Masek J/ 11- Ladd M/ 12- Behne C/ 20- Testerman A/ 21- Royston S/	02:31	0-10	-10	0.0000	0	0	1	0	0.0000
11- Ladd M/ 14- Carroll C/ 20- Testerman A/ 31- Van Dam J/ 55- Ebeling P/	02:22	2-6	-4	0.8451	0	0	0	1	0.5000
2- White J/ 12- Behne C/ 20- Testerman A/ 21- Royston S/ 31- Van Dam J/	01:36	2-0	2	1.2500	1	2	1	0	0.6667
2- White J/ 10- Masek J/ 14- Carroll C/ 20- Testerman A/ 55- Ebeling P/	01:27	7-2	5	4.8276	2	1	0	3	1.5766
2- White J/ 10- Masek J/ 12- Behne C/ 21- Royston S/ 31- Van Dam J/	01:21	7-0	7	5.1852	2	0	0	2	1.6204
2- White J/ 10- Masek J/ 11- Ladd M/ 20- Testerman A/ 21- Royston S/	01:17	0-2	-2	0.0000	2	0	0	0	0.0000
10- Masek J/ 11- Ladd M/ 12- Behne C/ 21- Royston S/ 31- Van Dam J/	00:56	5-6	-1	5.3571	0	1	1	1	1.6667
11- Ladd M/ 12- Behne C/ 20- Testerman A/ 21- Royston S/ 31- Van Dam J/	00:34	2-0	2	3.5294	1	0	0	0	2.0000
2- White J/ 10- Masek J/ 11- Ladd M/ 12- Behne C/ 21- Royston S/	00:26	0-1	-1	0.0000	0	0	0	0	0.0000
2- White J/ 10- Masek J/ 11- Ladd M/ 31- Van Dam J/ 55- Ebeling P/	00:23	2-1	1	5.2174	0	0	0	1	2.0000
2- White J/ 10- Masek J/ 14- Carroll C/ 20- Testerman A/ 21- Royston S/	00:00	0-0	0	NaN	0	0	0	0	0.0000