



Officials:

Crown (MN) - 69

Record: 5-7

| NO.           | Name                 | F | Min   | FG    |      | 3P    |    | FT |     | Rebounds |    |    | Fouls |    | TP | AS | TO | ST  | Blocks |    | +/- |
|---------------|----------------------|---|-------|-------|------|-------|----|----|-----|----------|----|----|-------|----|----|----|----|-----|--------|----|-----|
|               |                      |   |       | M-A   | M-A  | M-A   | OR | DR | TOT | PF       | FD | BS | BA    |    |    |    |    |     |        |    |     |
| 21            | Seth Royston         | F | 24:36 | 4-12  | 0-3  | 0-0   | 1  | 2  | 3   | 2        | 3  | 8  | 2     | 0  | 2  | 0  | 0  | 2   | 0      | 0  | -10 |
| 31            | Jacob Van Dam        | F | 27:39 | 2-8   | 0-4  | 0-0   | 2  | 1  | 3   | 5        | 0  | 4  | 0     | 0  | 0  | 0  | 0  | 0   | 1      | -2 |     |
| 11            | Micah Ladd           | G | 30:51 | 3-6   | 3-5  | 2-4   | 1  | 1  | 2   | 1        | 4  | 11 | 5     | 4  | 2  | 1  | 0  | -9  |        |    |     |
| 14            | Cade Carroll         | G | 26:54 | 4-10  | 1-5  | 5-6   | 1  | 4  | 5   | 2        | 3  | 14 | 0     | 1  | 1  | 0  | 1  | -7  |        |    |     |
| 20            | Alec Testerman       | G | 28:14 | 2-8   | 0-4  | 0-0   | 2  | 3  | 5   | 1        | 0  | 4  | 3     | 3  | 1  | 0  | 3  | -4  |        |    |     |
| 22            | Cade Neubert         |   | 17:57 | 5-9   | 2-3  | 0-0   | 2  | 0  | 2   | 0        | 0  | 12 | 0     | 2  | 1  | 0  | 1  | -6  |        |    |     |
| 12            | Carter Behne         |   | 18:39 | 4-5   | 0-0  | 1-1   | 1  | 0  | 1   | 1        | 1  | 9  | 0     | 0  | 0  | 0  | 0  | -9  |        |    |     |
| 0             | Christian Oldenettel |   | 06:08 | 0-0   | 0-0  | 0-0   | 0  | 0  | 0   | 0        | 0  | 0  | 1     | 1  | 0  | 0  | 0  | -6  |        |    |     |
| 4             | Cole Andersen        |   | 05:38 | 0-1   | 0-0  | 0-0   | 1  | 1  | 2   | 1        | 0  | 0  | 0     | 1  | 0  | 0  | 0  | -12 |        |    |     |
| 30            | Drew Burnett         |   | 09:12 | 1-3   | 0-2  | 2-2   | 0  | 1  | 1   | 1        | 2  | 4  | 1     | 0  | 2  | 0  | 0  | -1  |        |    |     |
| 5             | Gabe Rojas Gomez     |   | 04:12 | 1-1   | 0-0  | 1-1   | 0  | 0  | 0   | 0        | 1  | 3  | 0     | 1  | 1  | 0  | 0  | 1   |        |    |     |
| Team          |                      |   |       |       |      |       |    |    |     | 0        | 0  | 0  |       |    |    |    |    |     |        |    |     |
| <b>Totals</b> |                      |   |       | 26-63 | 6-26 | 11-14 | 11 | 13 | 24  | 14       | 14 | 69 | 12    | 13 | 10 | 1  | 6  | -13 |        |    |     |

| Shooting By Period |       |       |
|--------------------|-------|-------|
| 1st FG%            | 14-38 | 36.8% |
| 3PT%               | 6-17  | 35.3% |
| FT%                | 2-2   | 100%  |
| 2nd FG%            | 12-25 | 48.0% |
| 3PT%               | 0-9   | 0.0%  |
| FT%                | 9-12  | 75%   |
| GM FG%             | 26-63 | 41.3% |
| 3PT%               | 6-26  | 23.1% |
| FT%                | 11-14 | 78.6% |

Dead Ball Rebounds: 2, 3

Technical Fouls::NONE

Gust. Adolphus - 82

Record: 5-5

| NO.           | Name            | F | Min   | FG    |      | 3P  |    | FT |     | Rebounds |    |    | Fouls |    | TP | AS | TO | ST | Blocks |  | +/- |
|---------------|-----------------|---|-------|-------|------|-----|----|----|-----|----------|----|----|-------|----|----|----|----|----|--------|--|-----|
|               |                 |   |       | M-A   | M-A  | M-A | OR | DR | TOT | PF       | FD | BS | BA    |    |    |    |    |    |        |  |     |
| 4             | Nolan Malo      | F | 27:21 | 7-12  | 2-3  | 2-2 | 4  | 7  | 11  | 2        | 4  | 18 | 2     | 3  | 0  | 1  | 0  | 8  |        |  |     |
| 15            | Kaleb Feahn     | F | 25:06 | 3-11  | 0-5  | 2-3 | 2  | 5  | 7   | 2        | 2  | 8  | 1     | 5  | 2  | 1  | 0  | 18 |        |  |     |
| 22            | Adam Biewen     | F | 22:27 | 2-3   | 1-1  | 0-0 | 2  | 4  | 6   | 1        | 1  | 5  | 3     | 1  | 0  | 1  | 0  | 10 |        |  |     |
| 2             | Benji Lundberg  | G | 28:07 | 4-6   | 2-4  | 0-0 | 0  | 2  | 2   | 0        | 0  | 10 | 4     | 1  | 0  | 0  | 0  | 18 |        |  |     |
| 3             | Jordan Schommer | G | 19:56 | 1-4   | 0-2  | 0-0 | 0  | 0  | 0   | 2        | 1  | 2  | 2     | 3  | 2  | 0  | 0  | 2  |        |  |     |
| 5             | Evan Wiek       |   | 20:46 | 4-5   | 1-1  | 0-0 | 1  | 2  | 3   | 1        | 2  | 9  | 1     | 1  | 1  | 0  | 0  | 6  |        |  |     |
| 33            | Peter Lundquist |   | 17:59 | 6-8   | 1-2  | 2-3 | 1  | 4  | 5   | 3        | 2  | 15 | 2     | 2  | 0  | 3  | 0  | 18 |        |  |     |
| 10            | Jack Zammit     |   | 05:17 | 0-0   | 0-0  | 0-0 | 0  | 0  | 0   | 1        | 0  | 0  | 1     | 1  | 0  | 0  | 0  | 1  |        |  |     |
| 12            | Kip Schetnan    |   | 11:53 | 0-4   | 0-2  | 0-0 | 0  | 2  | 2   | 1        | 1  | 0  | 0     | 0  | 0  | 0  | 0  | -3 |        |  |     |
| 21            | Spencer Swanson |   | 18:00 | 5-7   | 0-0  | 1-1 | 1  | 1  | 2   | 1        | 1  | 11 | 1     | 1  | 1  | 0  | 1  | -5 |        |  |     |
| 1             | Brady Kienitz   |   | 01:34 | 0-0   | 0-0  | 0-0 | 0  | 0  | 0   | 0        | 0  | 0  | 0     | 0  | 0  | 0  | 0  | -4 |        |  |     |
| 23            | Dawson Kellen   |   | 01:34 | 2-2   | 0-0  | 0-0 | 0  | 0  | 0   | 0        | 0  | 4  | 0     | 0  | 0  | 0  | 0  | -4 |        |  |     |
| Team          |                 |   |       |       |      |     |    |    |     | 0        | 0  | 0  |       |    |    |    |    |    |        |  |     |
| <b>Totals</b> |                 |   |       | 34-62 | 7-20 | 7-9 | 11 | 27 | 38  | 14       | 14 | 82 | 17    | 18 | 6  | 6  | 1  | 13 |        |  |     |

| Shooting By Period |       |       |
|--------------------|-------|-------|
| 1st FG%            | 17-34 | 50.0% |
| 3PT%               | 5-13  | 38.5% |
| FT%                | 6-6   | 100%  |
| 2nd FG%            | 17-28 | 60.7% |
| 3PT%               | 2-7   | 28.6% |
| FT%                | 1-3   | 33.3% |
| GM FG%             | 34-62 | 54.8% |
| 3PT%               | 7-20  | 35.0% |
| FT%                | 7-9   | 77.8% |

Dead Ball Rebounds: 3, 0

Technical Fouls::NONE

|                  | CRN                       | GAC                        |
|------------------|---------------------------|----------------------------|
| Biggest lead     | 6 (1 <sup>st</sup> 15:37) | 19 (2 <sup>nd</sup> 12:15) |
| Best Scoring Run | 9 (1 <sup>st</sup> 5:50)  | 10 (1 <sup>st</sup> 2:20)  |
| Lead Changes     | 5                         |                            |
| Times Tied       | 0                         |                            |
| Time with Lead   | 08:49                     | 30:59                      |

| Points from   | CRN | GAC |
|---------------|-----|-----|
| Turnovers     | 16  | 13  |
| Paint         | 38  | 44  |
| Second Chance | 5   | 16  |
| Fast Breaks   | 9   | 9   |
| Bench         | 28  | 39  |

|     | Period by Period Scoring |     |     |
|-----|--------------------------|-----|-----|
|     | 1st                      | 2nd | TOT |
| CRN | 36                       | 33  | 69  |
| GAC | 45                       | 37  | 82  |



**Officials:**

**Period 1**

**Quarter Starters:**

|            |              |              |                |              |              |
|------------|--------------|--------------|----------------|--------------|--------------|
| <b>GAC</b> | 2 Lundberg B | 3 Schommer J | 4 Malo N       | 15 Feahn K   | 22 Biewen A  |
| <b>CRN</b> | 11 Ladd M    | 14 Carroll C | 20 Testerman A | 21 Royston S | 31 Van Dam J |

| Game Time | GAC  | Score      | Diff      | CRN   |
|-----------|--|------------|-----------|---|
| 20:00     | 4 MALO N jumpball lost                         |            |           | 21 ROYSTON S jumpball won   |
| 19:48     |  | <b>0-3</b> | <b>-3</b> | 11 LADD M 3pt FG , jump shot made (3)   |
| 19:48     |  |            |           | 21 ROYSTON S assist (1)   |
| 19:28     | 15 FEAHN K 3pt FG , jump shot missed           |            |           |   |
| 19:25     |  |            |           | 14 CARROLL C defensive rebound (1)  |
| 19:17     |  |            |           | 31 VAN DAM J 3pt FG , jump shot missed  |
| 19:13     | 2 LUNDBERG B defensive rebound (1)             |            |           |   |
| 19:06     | 15 FEAHN K 2pt FG in the paint, layup made (2) | <b>2-3</b> | <b>-1</b> |   |
| 19:06     | 2 LUNDBERG B assist (1)                        |            |           |   |
| 18:51     |  | <b>2-5</b> | <b>-3</b> | 21 ROYSTON S 2pt FG in the paint, layup made (2)                                    |
| 18:32     | 15 FEAHN K 2pt FG in the paint, layup missed   |            |           |   |
| 18:29     |  |            |           | 14 CARROLL C defensive rebound (2)  |
| 18:07     |  |            |           | 20 TESTERMAN A 2pt FG in the paint, layup blocked                                   |
| 18:07     | 15 FEAHN K block (1)                           |            |           |   |
| 18:01     | 4 MALO N defensive rebound (1)                 |            |           |   |
| 17:59     | 4 MALO N foul drawn (1)                        |            |           | 31 VAN DAM J foul shooting (1 - 1)  |
| 17:59     | 4 MALO N free throw fast break 1 - 2 made (1)  | <b>3-5</b> | <b>-2</b> |   |
| 17:59     | 4 MALO N free throw fast break 2 - 2 made (2)  | <b>4-5</b> | <b>-1</b> |   |
| 17:49     |  | <b>4-7</b> | <b>-3</b> | 14 CARROLL C 2pt FG in the paint, layup made (2)                                    |
| 17:49     |  |            |           | 21 ROYSTON S assist (2)   |
| 17:31     | 22 BIEWEN A 2pt FG in the paint, layup missed  |            |           |   |
| 17:27     |  |            |           | 14 CARROLL C defensive rebound (3)  |
| 17:06     |  |            |           | 21 ROYSTON S 2pt FG in the paint, layup missed                                      |
| 17:04     | 4 MALO N defensive rebound (2)                 |            |           |   |
| 16:53     | 2 LUNDBERG B 3pt FG , jump shot missed         |            |           |   |
| 16:51     |  |            |           | 31 VAN DAM J defensive rebound (1)  |
| 16:23     |  |            |           | 31 VAN DAM J 2pt FG in the paint, layup blocked                                     |
| 16:23     | 4 MALO N block (1)                             |            |           |   |
| 16:18     | 4 MALO N defensive rebound (3)                 |            |           |   |
| 16:18     | 4 MALO N foul offensive (1 - 1)                |            |           | 21 ROYSTON S foul drawn (1)   |
| 16:18     | 4 MALO N turnover offensive (1)                |            |           |   |
| 16:18     | 3 SCHOMMER J substitution out                  |            |           |   |
| 16:18     | 4 MALO N substitution out                      |            |           |   |
| 16:18     | 5 WIEKER E substitution in                     |            |           |   |
| 16:18     | 33 LUNDQUIST P substitution in                 |            |           |   |
| 16:18     |  |            |           | 21 ROYSTON S substitution out   |
| 16:18     |  |            |           | 22 NEUBERT C substitution in  |
| 15:53     |  |            |           | 22 NEUBERT C 2pt FG from turnover in the paint, layup blocked                       |
| 15:53     | 33 LUNDQUIST P block (1)                       |            |           |   |
| 15:47     |  |            |           | 22 NEUBERT C offensive rebound (1)  |
| 15:45     |  |            |           | 14 CARROLL C 2pt FG from turnover second chance outside the paint, jump shot missed |
| 15:42     |  |            |           | 22 NEUBERT C offensive rebound (2)  |



Official Basketball Play by Play - First Half  
**Crown (MN) at Gust. Adolphus**  
 01/01/22 Gus Young Court, Saint Peter, MN  
 2021-22 Men's Basketball

**Game Time:** 1:00 PM  
**Game Duration:** 1:29  
**Attendance:** 203

**Officials:**

| Game Time | GAC  | Score        | Diff      | CRN  |
|-----------|--|--------------|-----------|--|
| 15:37     |  | <b>4-10</b>  | <b>-6</b> | 11 LADD M 3pt FG from turnover second chance, jump shot made (6) |
| 15:20     | 33 LUNDQUIST P 2pt FG in the paint, layup made (2)               | <b>6-10</b>  | <b>-4</b> |  |
| 15:10     |  | <b>6-12</b>  | <b>-6</b> | 31 VAN DAM J 2pt FG in the paint, layup made (2)                 |
| 14:44     | 2 LUNDBERG B 3pt FG , jump shot made (3)                         | <b>9-12</b>  | <b>-3</b> |  |
| 14:44     | 22 BIEWEN A assist (1)   |              |           |  |
| 14:43     |  |              |           | Timeout 60 Sec   |
| 14:43     | 2 LUNDBERG B substitution out                                    |              |           |  |
| 14:43     | 15 FEAHN K substitution out                                      |              |           |  |
| 14:43     | 22 BIEWEN A substitution out                                     |              |           |  |
| 14:43     | 10 ZAMMIT J substitution in                                      |              |           |  |
| 14:43     | 12 SCHETNAN K substitution in                                    |              |           |  |
| 14:43     | 21 SWANSON S substitution in                                     |              |           |  |
| 14:43     |  |              |           | 14 CARROLL C substitution out                                    |
| 14:43     |  |              |           | 12 BEHNE C substitution in                                       |
| 14:30     |  |              |           | 12 BEHNE C 2pt FG in the paint, layup missed                     |
| 14:27     | 12 SCHETNAN K defensive rebound (1)                              |              |           |  |
| 14:23     | 12 SCHETNAN K 2pt FG in the paint, layup missed                  |              |           |  |
| 14:20     | 33 LUNDQUIST P offensive rebound (1)                             |              |           |  |
| 14:19     | 33 LUNDQUIST P 2pt FG second chance in the paint, layup made (4) | <b>11-12</b> | <b>-1</b> |  |
| 14:12     |  | <b>11-14</b> | <b>-3</b> | 12 BEHNE C 2pt FG in the paint, layup made (2)                   |
| 14:12     |  |              |           | 20 TESTERMAN A assist (1)  |
| 13:50     | 5 WIEKER E 2pt FG in the paint, layup made (2)                   | <b>13-14</b> | <b>-1</b> |  |
| 13:50     | 33 LUNDQUIST P assist (1)  |              |           |  |
| 13:37     |  | <b>13-17</b> | <b>-4</b> | 22 NEUBERT C 3pt FG , jump shot made (3)                         |
| 13:37     |  |              |           | 11 LADD M assist (1)   |
| 13:19     | 12 SCHETNAN K foul drawn (1)                                     |              |           | 31 VAN DAM J foul personal (2 - 2)                               |
| 13:19     | 33 LUNDQUIST P substitution out                                  |              |           |  |
| 13:19     | 4 MALO N substitution in   |              |           |  |
| 13:19     |  |              |           | 20 TESTERMAN A substitution out                                  |
| 13:19     |  |              |           | 31 VAN DAM J substitution out                                    |
| 13:19     |  |              |           | 0 OLDENETTEL C substitution in                                   |
| 13:19     |  |              |           | 14 CARROLL C substitution in                                     |
| 13:12     | 5 WIEKER E foul drawn (1)  |              |           | 14 CARROLL C foul personal (1 - 3)                               |
| 12:59     | 4 MALO N 3pt FG , jump shot made (5)                             | <b>16-17</b> | <b>-1</b> |  |
| 12:59     | 21 SWANSON S assist (1)  |              |           |  |
| 12:30     |  | <b>16-20</b> | <b>-4</b> | 11 LADD M 3pt FG , jump shot made (9)                            |
| 12:30     |  |              |           | 0 OLDENETTEL C assist (1)  |
| 12:20     | 5 WIEKER E 3pt FG , jump shot made (5)                           | <b>19-20</b> | <b>-1</b> |  |
| 12:20     | 4 MALO N assist (1)  |              |           |  |
| 12:00     |  |              |           | 22 NEUBERT C 2pt FG in the paint, layup missed                   |
| 11:57     | 12 SCHETNAN K defensive rebound (2)                              |              |           |  |
| 11:49     | 21 SWANSON S 2pt FG in the paint, layup made (2)                 | <b>21-20</b> | <b>1</b>  |  |
| 11:49     | 10 ZAMMIT J assist (1)   |              |           |  |
| 11:33     |  |              |           | 22 NEUBERT C 2pt FG in the paint, layup missed                   |
| 11:29     | 21 SWANSON S defensive rebound (1)                               |              |           |  |
| 11:24     | 4 MALO N 2pt FG outside the paint, jump shot made (7)            | <b>23-20</b> | <b>3</b>  |  |
| 11:24     | 5 WIEKER E assist (1)  |              |           |  |
| 11:23     |  |              |           | Timeout 30 Sec   |



Official Basketball Play by Play - First Half  
**Crown (MN) at Gust. Adolphus**  
 01/01/22 Gus Young Court, Saint Peter, MN  
 2021-22 Men's Basketball

Game Time: 1:00 PM  
 Game Duration: 1:29  
 Attendance: 203

Officials:

| Game Time | GAC  | Score        | Diff     | CRN   |
|-----------|--|--------------|----------|---|
| 11:23     | 5 WIEKER E substitution out                                      |              |          |   |
| 11:23     | 10 ZAMMIT J substitution out                                     |              |          |   |
| 11:23     | 12 SCHETNAN K substitution out                                   |              |          |   |
| 11:23     | 2 LUNDBERG B substitution in                                     |              |          |   |
| 11:23     | 15 FEAHN K substitution in                                       |              |          |   |
| 11:23     | 22 BIEWEN A substitution in                                      |              |          |   |
| 11:23     |  |              |          | 0 OLDENETTEL C substitution out                                   |
| 11:23     |  |              |          | 12 BEHNE C substitution out                                       |
| 11:23     |  |              |          | 22 NEUBERT C substitution out                                     |
| 11:23     |  |              |          | 20 TESTERMAN A substitution in                                    |
| 11:23     |  |              |          | 21 ROYSTON S substitution in                                      |
| 11:23     |  |              |          | 31 VAN DAM J substitution in                                      |
| 11:04     |  |              |          | 21 ROYSTON S 2pt FG in the paint, layup missed                    |
| 11:01     | 15 FEAHN K defensive rebound (1)                                 |              |          |   |
| 10:54     | 2 LUNDBERG B 2pt FG in the paint, layup made (5)                 | <b>25-20</b> | <b>5</b> |   |
| 10:54     | 15 FEAHN K assist (1)  |              |          |   |
| 10:33     |  | <b>25-22</b> | <b>3</b> | 21 ROYSTON S 2pt FG outside the paint, jump shot made (4)         |
| 10:33     |  |              |          | 11 LADD M assist (2)  |
| 10:26     | 15 FEAHN K foul offensive (1 - 2)                                |              |          | 21 ROYSTON S foul drawn (2)                                       |
| 10:26     | 15 FEAHN K turnover offensive (1)                                |              |          |   |
| 10:26     | 21 SWANSON S substitution out                                    |              |          |   |
| 10:26     | 3 SCHOMMER J substitution in                                     |              |          |   |
| 10:08     |  |              |          | 14 CARROLL C 3pt FG from turnover, jump shot missed               |
| 09:42     |  |              |          | 31 VAN DAM J offensive rebound (2)                                |
| 09:37     |  |              |          | 21 ROYSTON S 3pt FG from turnover second chance, jump shot missed |
| 09:26     |  |              |          | 14 CARROLL C offensive rebound (4)                                |
| 09:16     |  |              |          | 14 CARROLL C 3pt FG from turnover second chance, jump shot missed |
| 09:13     | 4 MALO N defensive rebound (4)                                   |              |          |   |
| 09:13     | 4 MALO N substitution out  |              |          |   |
| 09:13     | 33 LUNDQUIST P substitution in                                   |              |          |   |
| 09:13     |  |              |          | 11 LADD M substitution out  |
| 09:13     |  |              |          | 14 CARROLL C substitution out                                     |
| 09:13     |  |              |          | 4 ANDERSEN C substitution in                                      |
| 09:13     |  |              |          | 12 BEHNE C substitution in  |
| 09:02     | 15 FEAHN K 3pt FG , jump shot missed                             |              |          |   |
| 08:58     |  |              |          | 21 ROYSTON S defensive rebound (1)                                |
| 08:49     |  |              |          | 31 VAN DAM J 3pt FG , jump shot missed                            |
| 08:47     |  |              |          | 12 BEHNE C offensive rebound (1)                                  |
| 08:44     | jump ball situation  |              |          |   |
| 08:44     | 15 FEAHN K steal (1)   |              |          | 4 ANDERSEN C turnover lost ball (1)                               |
| 08:30     | 33 LUNDQUIST P 2pt FG from turnover in the paint, layup made (6) | <b>27-22</b> | <b>5</b> |   |
| 08:07     |  |              |          | 21 ROYSTON S 2pt FG in the paint, layup missed                    |
| 08:04     |  |              |          | 21 ROYSTON S offensive rebound (2)                                |
| 08:01     |  |              |          | 21 ROYSTON S 2pt FG second chance in the paint, layup missed      |
| 07:54     |  |              |          | 20 TESTERMAN A offensive rebound (1)                              |
| 07:54     |  |              |          | 20 TESTERMAN A 3pt FG second chance, jump shot missed             |



Official Basketball Play by Play - First Half  
**Crown (MN) at Gust. Adolphus**  
 01/01/22 Gus Young Court, Saint Peter, MN  
 2021-22 Men's Basketball

Game Time: 1:00 PM  
 Game Duration: 1:29  
 Attendance: 203

Officials:

| Game Time | GAC  | Score | Diff | CRN  |
|-----------|--|-------|------|--|
| 07:50     |  |       |      | 4 ANDERSEN C offensive rebound (1)                               |
| 07:48     |  |       |      | 4 ANDERSEN C 2pt FG second chance in the paint, jump shot missed |
| 07:44     | 33 LUNDQUIST P defensive rebound (2)                       |       |      |  |
| 07:29     | 33 LUNDQUIST P 2pt FG in the paint, layup made (8)         | 29-22 | 7    |  |
| 07:29     | 2 LUNDBERG B assist (2)                                    |       |      |  |
| 07:29     | 33 LUNDQUIST P foul drawn (1)                              |       |      | 21 ROYSTON S foul shooting (1 - 4)                               |
| 07:29     | 33 LUNDQUIST P free throw 1 - 1 made (9)                   | 30-22 | 8    |  |
| 07:29     | 2 LUNDBERG B substitution out                              |       |      |  |
| 07:29     | 15 FEAHN K substitution out                                |       |      |  |
| 07:29     | 33 LUNDQUIST P substitution out                            |       |      |  |
| 07:29     | 4 MALO N substitution in                                   |       |      |  |
| 07:29     | 5 WIEKER E substitution in                                 |       |      |  |
| 07:29     | 12 SCHETNAN K substitution in                              |       |      |  |
| 07:29     |  |       |      | 21 ROYSTON S substitution out                                    |
| 07:29     |  |       |      | 22 NEUBERT C substitution in                                     |
| 07:13     |  |       |      | 12 BEHNE C substitution out                                      |
| 07:13     |  |       |      | 11 LADD M substitution in  |
| 07:13     |  |       |      | 4 ANDERSEN C substitution out                                    |
| 07:13     |  |       |      | 14 CARROLL C substitution in                                     |
| 07:13     | 22 BIEWEN A substitution out                               |       |      |  |
| 07:13     | 21 SWANSON S substitution in                               |       |      |  |
| 07:05     |  | 30-24 | 6    | 31 VAN DAM J 2pt FG in the paint, layup made (4)                 |
| 06:49     | 12 SCHETNAN K 2pt FG outside the paint, jump shot missed   |       |      |  |
| 06:46     |  |       |      | 11 LADD M defensive rebound (1)                                  |
| 06:43     |  | 30-26 | 4    | 20 TESTERMAN A 2pt FG fast break in the paint, layup made (2)    |
| 06:43     |  |       |      | 11 LADD M assist (3)   |
| 06:33     | 3 SCHOMMER J 3pt FG , jump shot missed                     |       |      |  |
| 06:26     | 4 MALO N offensive rebound (5)                             |       |      |  |
| 06:26     | 4 MALO N turnover lost ball (2)                            |       |      | 20 TESTERMAN A steal (1)   |
| 06:15     |  | 30-28 | 2    | 20 TESTERMAN A 2pt FG from turnover in the paint, layup made (4) |
| 06:09     | 3 SCHOMMER J turnover lost ball (1)                        |       |      | 22 NEUBERT C steal (1)   |
| 06:08     |  |       |      | 22 NEUBERT C turnover out of bounds (1)                          |
| 06:08     | 12 SCHETNAN K substitution out                             |       |      |  |
| 06:08     | 2 LUNDBERG B substitution in                               |       |      |  |
| 05:55     | 4 MALO N 2pt FG from turnover in the paint, layup missed   |       |      |  |
| 05:52     |  |       |      | 20 TESTERMAN A defensive rebound (2)                             |
| 05:50     |  | 30-31 | -1   | 14 CARROLL C 3pt FG fast break, jump shot made (5)               |
| 05:50     |  |       |      | 20 TESTERMAN A assist (2)  |
| 05:33     | 4 MALO N 2pt FG in the paint, layup missed                 |       |      |  |
| 05:31     | 4 MALO N offensive rebound (6)                             |       |      |  |
| 05:30     | 4 MALO N 2pt FG second chance in the paint, layup made (9) | 32-31 | 1    |  |
| 05:12     |  | 32-34 | -2   | 22 NEUBERT C 3pt FG , jump shot made (6)                         |
| 05:12     |  |       |      | 20 TESTERMAN A assist (3)  |
| 04:42     | 2 LUNDBERG B 3pt FG , jump shot made (8)                   | 35-34 | 1    |  |
| 04:42     | 3 SCHOMMER J assist (1)                                    |       |      |  |
| 04:41     | 3 SCHOMMER J substitution out                              |       |      |  |
| 04:41     | 15 FEAHN K substitution in                                 |       |      |  |



Official Basketball Play by Play - First Half  
**Crown (MN) at Gust. Adolphus**  
 01/01/22 Gus Young Court, Saint Peter, MN  
 2021-22 Men's Basketball

Game Time: 1:00 PM  
 Game Duration: 1:29  
 Attendance: 203

Officials:

| Game Time | GAC  | Score        | Diff     | CRN   |
|-----------|--|--------------|----------|---|
| 04:41     |  |              |          | 22 NEUBERT C substitution out                                     |
| 04:41     |  |              |          | 31 VAN DAM J substitution out                                     |
| 04:41     |  |              |          | 12 BEHNE C substitution in  |
| 04:41     |  |              |          | 21 ROYSTON S substitution in                                      |
| 04:13     | 21 SWANSON S steal (1)   |              |          | 11 LADD M turnover lost ball (1)                                  |
| 04:10     | 21 SWANSON S 2pt FG from turnover in the paint, layup blocked                |              |          |   |
| 04:10     |  |              |          | 11 LADD M block (1)   |
| 04:10     | offensive dead ball rebound (1)  |              |          |   |
| 03:59     | 2 LUNDBERG B 3pt FG from turnover second chance, jump shot missed            |              |          |   |
| 03:56     | 4 MALO N offensive rebound (7)   |              |          |   |
| 03:56     | 4 MALO N 2pt FG from turnover second chance in the paint, layup missed       |              |          |   |
| 03:56     | 21 SWANSON S offensive rebound (2)   |              |          |   |
| 03:56     | 21 SWANSON S 2pt FG from turnover second chance in the paint, layup made (4) | <b>37-34</b> | <b>3</b> |   |
| 03:56     | 21 SWANSON S foul drawn (1)  |              |          | 12 BEHNE C foul shooting (1 - 5)                                  |
| 03:56     | 4 MALO N substitution out  |              |          |   |
| 03:56     | 33 LUNDQUIST P substitution in   |              |          |   |
| 03:56     |  |              |          | 12 BEHNE C substitution out                                       |
| 03:56     |  |              |          | 4 ANDERSEN C substitution in                                      |
| 03:56     | 21 SWANSON S free throw 1 - 1 made (5)                                       | <b>38-34</b> | <b>4</b> |   |
| 03:56     | 21 SWANSON S substitution out  |              |          |   |
| 03:56     | 22 BIEWEN A substitution in  |              |          |   |
| 03:39     |  |              |          | 20 TESTERMAN A turnover out of bounds (1)                         |
| 03:25     | 5 WIEKER E turnover out of bounds (1)  |              |          |   |
| 03:15     |  |              |          | 21 ROYSTON S 3pt FG from turnover, jump shot missed               |
| 03:11     |  |              |          | 20 TESTERMAN A offensive rebound (3)                              |
| 03:07     |  |              |          | 14 CARROLL C 3pt FG from turnover second chance, jump shot missed |
| 03:03     | 22 BIEWEN A defensive rebound (1)  |              |          |   |
| 02:56     | 15 FEAHN K 3pt FG , jump shot missed   |              |          |   |
| 02:54     | 22 BIEWEN A offensive rebound (2)  |              |          |   |
| 02:54     | 22 BIEWEN A foul drawn (1)   |              |          | 4 ANDERSEN C foul personal (1 - 6)                                |
| 02:54     | 5 WIEKER E substitution out  |              |          |   |
| 02:54     | 3 SCHOMMER J substitution in   |              |          |   |
| 02:52     | 15 FEAHN K 2pt FG second chance in the paint, layup missed                   |              |          |   |
| 02:50     | 15 FEAHN K offensive rebound (2)   |              |          |   |
| 02:48     | 15 FEAHN K turnover out of bounds (2)  |              |          |   |
| 02:33     | 15 FEAHN K steal (2)   |              |          | 11 LADD M turnover lost ball (2)                                  |
| 02:33     | 15 FEAHN K foul drawn (1)  |              |          | 20 TESTERMAN A foul flagrant 1 (1 - 7)                            |
| 02:33     | 15 FEAHN K free throw fast break 1 - 2 made (3)                              | <b>39-34</b> | <b>5</b> |   |
| 02:33     | 15 FEAHN K free throw fast break 2 - 2 made (4)                              | <b>40-34</b> | <b>6</b> |   |
| 02:33     |  |              |          | 4 ANDERSEN C substitution out                                     |
| 02:33     |  |              |          | 14 CARROLL C substitution out                                     |
| 02:33     |  |              |          | 22 NEUBERT C substitution in                                      |
| 02:33     |  |              |          | 31 VAN DAM J substitution in                                      |
| 02:20     | 33 LUNDQUIST P 2pt FG in the paint, layup made (11)                          | <b>42-34</b> | <b>8</b> |   |
| 01:53     | 33 LUNDQUIST P foul shooting (1 - 3)   |              |          | 11 LADD M foul drawn (1)  |
| 01:53     |  | <b>42-35</b> | <b>7</b> | 11 LADD M free throw 1 - 2 made (10)                              |



Official Basketball Play by Play - First Half

**Crown (MN) at Gust. Adolphus**

01/01/22 Gus Young Court, Saint Peter, MN  
2021-22 Men's Basketball

Game Time: 1:00 PM

Game Duration: 1:29

Attendance: 203

Officials:

| Game Time            | GAC   | Score        | Diff     | CRN   |
|----------------------|---|--------------|----------|---|
| 01:53                | 2 LUNDBERG B substitution out                   |              |          |   |
| 01:53                | 4 MALO N substitution in                        |              |          |   |
| 01:53                |   | <b>42-36</b> | <b>6</b> | 11 LADD M free throw 2 - 2 made (11)                                |
| 01:41                | 33 LUNDQUIST P 3pt FG , jump shot missed        |              |          |   |
| 01:38                |   |              |          | 20 TESTERMAN A defensive rebound (4)                                |
| 01:12                |   |              |          | 11 LADD M 2pt FG in the paint, layup missed                         |
| 01:09                | 33 LUNDQUIST P defensive rebound (3)            |              |          |   |
| 01:03                | 4 MALO N turnover travel (3)                    |              |          |   |
| 01:03                | 3 SCHOMMER J substitution out                   |              |          |   |
| 01:03                | 2 LUNDBERG B substitution in                    |              |          |   |
| 00:49                |   |              |          | 21 ROYSTON S 3pt FG from turnover, jump shot missed                 |
| 00:46                |   |              |          | 31 VAN DAM J offensive rebound (3)                                  |
| 00:44                |   |              |          | 20 TESTERMAN A 3pt FG from turnover second chance, jump shot missed |
| 00:34                | 22 BIEWEN A defensive rebound (3)               |              |          |   |
| 00:11                | 22 BIEWEN A 3pt FG , jump shot made (3)         | <b>45-36</b> | <b>9</b> |   |
| 00:11                | 2 LUNDBERG B assist (3)                         |              |          |   |
| 00:01                |   |              |          | 20 TESTERMAN A 3pt FG , jump shot blocked                           |
| 00:01                | 33 LUNDQUIST P block (2)                        |              |          |   |
| 00:01                |   |              |          | 11 LADD M offensive rebound (2)                                     |
| 00:01                |   |              |          | 11 LADD M turnover out of bounds (3)                                |
| 00:01                | 4 MALO N 3pt FG from turnover, jump shot missed |              |          |   |
| 00:01                |   |              |          | defensive dead ball rebound (1)                                     |
| <b>END OF PERIOD</b> |   |              |          |   |
| <b>GAC 45-36 CRN</b> |   |              |          |   |



Officials:

**Crown (MN) - 36**

| NO.           | Name                 | F | Min   | FG    |      |     | 3P |    |     | FT |    |    | Rebounds |   |   | Fouls |   | TP | AS | TO | ST | Blocks |     | +/- |
|---------------|----------------------|---|-------|-------|------|-----|----|----|-----|----|----|----|----------|---|---|-------|---|----|----|----|----|--------|-----|-----|
|               |                      |   |       | M-A   | M-A  | M-A | OR | DR | TOT | PF | FD | BS | BA       |   |   |       |   |    |    |    |    |        |     |     |
| 21            | Seth Royston         | F | 12:17 | 2-9   | 0-3  | 0-0 | 1  | 1  | 2   | 1  | 2  | 4  | 2        | 0 | 0 | 0     | 0 | 0  | 0  | 0  | 0  | 0      | -10 |     |
| 31            | Jacob Van Dam        | F | 15:56 | 2-5   | 0-2  | 0-0 | 2  | 1  | 3   | 2  | 0  | 4  | 0        | 0 | 0 | 0     | 0 | 0  | 0  | 0  | 1  | 3      |     |     |
| 11            | Micah Ladd           | G | 18:00 | 3-4   | 3-3  | 2-2 | 1  | 1  | 2   | 0  | 1  | 11 | 3        | 3 | 0 | 1     | 0 | 0  | 0  | 0  | 0  | -4     |     |     |
| 14            | Cade Carroll         | G | 14:03 | 2-6   | 1-4  | 0-0 | 1  | 3  | 4   | 1  | 0  | 5  | 0        | 0 | 0 | 0     | 0 | 0  | 0  | 0  | 0  | -2     |     |     |
| 20            | Alec Testerman       | G | 18:04 | 2-6   | 0-3  | 0-0 | 2  | 2  | 4   | 1  | 0  | 4  | 3        | 1 | 1 | 0     | 2 | 0  | 0  | 0  | 0  | -2     |     |     |
| 22            | Cade Neubert         |   | 10:16 | 2-5   | 2-2  | 0-0 | 2  | 0  | 2   | 0  | 0  | 6  | 0        | 1 | 1 | 0     | 1 | 0  | 0  | 0  | 0  | -2     |     |     |
| 12            | Carter Behne         |   | 06:05 | 1-2   | 0-0  | 0-0 | 1  | 0  | 1   | 1  | 0  | 2  | 0        | 0 | 0 | 0     | 0 | 0  | 0  | 0  | 0  | -13    |     |     |
| 0             | Christian Oldenettel |   | 01:56 | 0-0   | 0-0  | 0-0 | 0  | 0  | 0   | 0  | 0  | 0  | 1        | 0 | 0 | 0     | 0 | 0  | 0  | 0  | 0  | -7     |     |     |
| 4             | Cole Andersen        |   | 03:23 | 0-1   | 0-0  | 0-0 | 1  | 0  | 1   | 1  | 0  | 0  | 0        | 0 | 1 | 0     | 0 | 0  | 0  | 0  | 0  | -8     |     |     |
| Team          |                      |   |       |       |      |     | 0  | 0  | 0   |    |    | 0  |          |   |   |       |   |    |    |    |    |        |     |     |
| <b>Totals</b> |                      |   |       | 14-38 | 6-17 | 2-2 | 11 | 8  | 19  | 7  | 3  | 36 | 9        | 6 | 2 | 1     | 4 |    |    |    |    | -9     |     |     |

| Shooting By Period |       |        |
|--------------------|-------|--------|
| 1st FG%            | 14-38 | 36.8%  |
| 3PT%               | 6-17  | 35.3%  |
| FT%                | 2-2   | 100%   |
| GM FG%             | 14-38 | 36.8%  |
| 3PT%               | 6-17  | 35.3%  |
| FT%                | 2-2   | 100.0% |

Dead Ball Rebounds: 0, 1

Technical Fouls::NONE

**Gust. Adolphus - 45**

| NO.           | Name            | F | Min   | FG    |      |     | 3P |    |     | FT |    |    | Rebounds |   |   | Fouls |   | TP | AS | TO | ST | Blocks |  | +/- |
|---------------|-----------------|---|-------|-------|------|-----|----|----|-----|----|----|----|----------|---|---|-------|---|----|----|----|----|--------|--|-----|
|               |                 |   |       | M-A   | M-A  | M-A | OR | DR | TOT | PF | FD | BS | BA       |   |   |       |   |    |    |    |    |        |  |     |
| 4             | Nolan Malo      | F | 13:14 | 3-7   | 1-2  | 2-2 | 3  | 4  | 7   | 1  | 1  | 9  | 1        | 3 | 0 | 1     | 0 | 1  | 0  | 0  | 0  | 1      |  |     |
| 15            | Kaleb Feahn     | F | 13:52 | 1-6   | 0-3  | 2-2 | 1  | 1  | 2   | 1  | 1  | 4  | 1        | 2 | 2 | 1     | 0 | 10 | 0  | 0  | 0  | 10     |  |     |
| 22            | Adam Biewen     | F | 13:23 | 1-2   | 1-1  | 0-0 | 1  | 2  | 3   | 0  | 1  | 3  | 1        | 0 | 0 | 0     | 0 | 7  | 0  | 0  | 0  | 7      |  |     |
| 2             | Benji Lundberg  | G | 14:29 | 3-5   | 2-4  | 0-0 | 0  | 1  | 1   | 0  | 0  | 8  | 3        | 0 | 0 | 0     | 0 | 10 | 0  | 0  | 0  | 10     |  |     |
| 3             | Jordan Schommer | G | 11:18 | 0-1   | 0-1  | 0-0 | 0  | 0  | 0   | 0  | 0  | 0  | 1        | 1 | 0 | 0     | 0 | -3 | 0  | 0  | 0  | -3     |  |     |
| 5             | Evan Wiker      |   | 09:30 | 2-2   | 1-1  | 0-0 | 0  | 0  | 0   | 0  | 1  | 5  | 1        | 1 | 0 | 0     | 0 | 2  | 0  | 0  | 0  | 2      |  |     |
| 33            | Peter Lundquist |   | 08:39 | 5-6   | 0-1  | 1-1 | 1  | 2  | 3   | 1  | 1  | 11 | 1        | 0 | 0 | 2     | 0 | 10 | 0  | 0  | 0  | 10     |  |     |
| 10            | Jack Zammit     |   | 03:20 | 0-0   | 0-0  | 0-0 | 0  | 0  | 0   | 0  | 0  | 0  | 1        | 0 | 0 | 0     | 0 | 6  | 0  | 0  | 0  | 6      |  |     |
| 12            | Kip Schetnan    |   | 04:41 | 0-2   | 0-0  | 0-0 | 0  | 2  | 2   | 0  | 1  | 0  | 0        | 0 | 0 | 0     | 0 | 0  | 0  | 0  | 0  | 0      |  |     |
| 21            | Spencer Swanson |   | 07:34 | 2-3   | 0-0  | 1-1 | 1  | 1  | 2   | 0  | 1  | 5  | 1        | 0 | 1 | 0     | 1 | 2  | 0  | 0  | 1  | 2      |  |     |
| Team          |                 |   |       |       |      |     | 0  | 0  | 0   |    |    | 0  |          |   |   |       |   |    |    |    |    |        |  |     |
| <b>Totals</b> |                 |   |       | 17-34 | 5-13 | 6-6 | 7  | 13 | 20  | 3  | 7  | 45 | 11       | 7 | 3 | 4     | 1 | 9  |    |    |    |        |  |     |

| Shooting By Period |       |        |
|--------------------|-------|--------|
| 1st FG%            | 17-34 | 50.0%  |
| 3PT%               | 5-13  | 38.5%  |
| FT%                | 6-6   | 100%   |
| GM FG%             | 17-34 | 50.0%  |
| 3PT%               | 5-13  | 38.5%  |
| FT%                | 6-6   | 100.0% |

Dead Ball Rebounds: 1, 0

Technical Fouls::NONE

|                  | CRN                       | GAC                       |
|------------------|---------------------------|---------------------------|
| Biggest lead     | 6 (1 <sup>st</sup> 15:37) | 9 (1 <sup>st</sup> 0:11)  |
| Best Scoring Run | 9 (1 <sup>st</sup> 5:50)  | 10 (1 <sup>st</sup> 2:20) |
| Lead Changes     | 5                         |                           |
| Times Tied       | 0                         |                           |
| Time with Lead   | 08:49                     | 10:59                     |

| Points from   | CRN | GAC |
|---------------|-----|-----|
| Turnovers     | 5   | 7   |
| Paint         | 14  | 22  |
| Second Chance | 3   | 7   |
| Fast Breaks   | 5   | 4   |
| Bench         | 8   | 21  |

|     | Period by Period Scoring |     |     |
|-----|--------------------------|-----|-----|
|     | 1st                      | 2nd | TOT |
| CRN | 36                       | 33  | 69  |
| GAC | 45                       | 37  | 82  |





**Officials:**

**Period 2**

**Quarter Starters:**

|            |              |              |                |              |              |
|------------|--------------|--------------|----------------|--------------|--------------|
| <b>GAC</b> | 2 Lundberg B | 3 Schommer J | 4 Malo N       | 15 Feahn K   | 22 Biewen A  |
| <b>CRN</b> | 11 Ladd M    | 14 Carroll C | 20 Testerman A | 21 Royston S | 31 Van Dam J |

| Game Time | GAC  | Score        | Diff      | CRN  |
|-----------|--|--------------|-----------|--|
| 20:00     | 33 LUNDQUIST P substitution out                              |              |           |  |
| 20:00     | 3 SCHOMMER J substitution in                                 |              |           |  |
| 20:00     |  |              |           | 22 NEUBERT C substitution out                            |
| 20:00     |  |              |           | 14 CARROLL C substitution in                             |
| 19:45     | 22 BIEWEN A foul shooting (1 - 1)                            |              |           | 14 CARROLL C foul drawn (1)                              |
| 19:45     |  | <b>45-37</b> | <b>8</b>  | 14 CARROLL C free throw 1 - 2 made (6)                   |
| 19:45     |  |              |           | 14 CARROLL C free throw 2 - 2 missed                     |
| 19:45     | 15 FEAHN K defensive rebound (3)                             |              |           |  |
| 19:31     | 3 SCHOMMER J turnover lost ball (2)                          |              |           | 14 CARROLL C steal (1)                                   |
| 19:18     | 3 SCHOMMER J foul personal (1 - 2)                           |              |           | 11 LADD M foul drawn (2)                                 |
| 19:14     | 3 SCHOMMER J steal (1)                                       |              |           | 11 LADD M turnover lost ball (4)                         |
| 19:05     | 2 LUNDBERG B turnover lost ball (1)                          |              |           | 21 ROYSTON S steal (1)                                   |
| 18:54     | 3 SCHOMMER J foul drawn (1)                                  |              |           | 14 CARROLL C foul offensive (2 - 1)                      |
| 18:54     |  |              |           | 14 CARROLL C turnover offensive (1)                      |
| 18:44     | 4 MALO N foul drawn (2)                                      |              |           | 21 ROYSTON S foul personal (2 - 2)                       |
| 18:39     | 15 FEAHN K 3pt FG from turnover, jump shot missed            |              |           |  |
| 18:36     |  |              |           | 14 CARROLL C defensive rebound (5)                       |
| 18:29     |  |              |           | 11 LADD M 3pt FG , jump shot missed                      |
| 18:24     | 2 LUNDBERG B defensive rebound (2)                           |              |           |  |
| 18:16     | 3 SCHOMMER J 3pt FG , jump shot missed                       |              |           |  |
| 18:13     | 15 FEAHN K offensive rebound (4)                             |              |           |  |
| 18:12     | 15 FEAHN K 2pt FG second chance in the paint, layup made (6) | <b>47-37</b> | <b>10</b> |  |
| 17:57     |  |              |           | 14 CARROLL C 2pt FG outside the paint, jump shot blocked |
| 17:57     | 22 BIEWEN A block (1)  |              |           |  |
| 17:46     | 4 MALO N defensive rebound (8)                               |              |           |  |
| 17:46     | 4 MALO N foul drawn (3)                                      |              |           | 31 VAN DAM J foul personal (3 - 3)                       |
| 17:46     |  |              |           | 31 VAN DAM J substitution out                            |
| 17:46     |  |              |           | 30 BURNETT D substitution in                             |
| 17:45     | 4 MALO N substitution out                                    |              |           |  |
| 17:45     | 33 LUNDQUIST P substitution in                               |              |           |  |
| 17:37     | 3 SCHOMMER J 2pt FG outside the paint, jump shot missed      |              |           |  |
| 17:35     |  |              |           | defensive dead ball rebound (2)                          |
| 17:19     |  |              |           | 20 TESTERMAN A 3pt FG , jump shot missed                 |
| 17:14     | 15 FEAHN K defensive rebound (5)                             |              |           |  |
| 16:58     | 3 SCHOMMER J foul personal (2 - 3)                           |              |           | 11 LADD M foul drawn (3)                                 |
| 16:49     |  | <b>47-39</b> | <b>8</b>  | 14 CARROLL C 2pt FG in the paint, layup made (8)         |
| 16:49     |  |              |           | 30 BURNETT D assist (1)                                  |
| 16:17     | 33 LUNDQUIST P 3pt FG , jump shot made (14)                  | <b>50-39</b> | <b>11</b> |  |
| 16:17     | 3 SCHOMMER J assist (2)                                      |              |           |  |
| 16:02     |  |              |           | 30 BURNETT D 3pt FG , jump shot missed                   |
| 15:59     | 15 FEAHN K defensive rebound (6)                             |              |           |  |
| 15:55     | 33 LUNDQUIST P 2pt FG in the paint, layup missed             |              |           |  |
| 15:51     | 22 BIEWEN A offensive rebound (4)                            |              |           |  |

**Crown (MN) at Gust. Adolphus**01/01/22 Gus Young Court, Saint Peter, MN  
2021-22 Men's Basketball

Game Time: 1:00 PM

Game Duration: 1:29

Attendance: 203

Officials:

| Game Time | GAC   | Score        | Diff      | CRN  |
|-----------|---|--------------|-----------|--|
| 15:50     | 22 BIEWEN A 2pt FG second chance in the paint, layup made (5)             | <b>52-39</b> | <b>13</b> |  |
| 15:47     |   |              |           | Timeout 60 Sec                                   |
| 15:47     | 3 SCHOMMER J substitution out   |              |           |  |
| 15:47     | 22 BIEWEN A substitution out  |              |           |  |
| 15:47     | 5 WIEKER E substitution in  |              |           |  |
| 15:47     | 12 SCHETNAN K substitution in   |              |           |  |
| 15:47     |   |              |           | 21 ROYSTON S substitution out                    |
| 15:47     |   |              |           | 22 NEUBERT C substitution in                     |
| 15:37     | 5 WIEKER E steal (1)  |              |           | 20 TESTERMAN A turnover lost ball (2)            |
| 15:27     | 33 LUNDQUIST P turnover travel (1)  |              |           |  |
| 15:27     | 15 FEAHN K substitution out   |              |           |  |
| 15:27     | 21 SWANSON S substitution in  |              |           |  |
| 15:13     | 33 LUNDQUIST P foul shooting (2 - 4)                                      |              |           | 11 LADD M foul drawn (4)                         |
| 15:13     |   |              |           | 11 LADD M free throw 1 - 2 missed                |
| 15:13     |   |              |           | offensive dead ball rebound (3)                  |
| 15:13     | 33 LUNDQUIST P substitution out   |              |           |  |
| 15:13     | 4 MALO N substitution in  |              |           |  |
| 15:13     |   |              |           | 11 LADD M free throw 2 - 2 missed                |
| 15:12     | 5 WIEKER E defensive rebound (1)  |              |           |  |
| 14:51     | 4 MALO N 2pt FG outside the paint, jump shot missed                       |              |           |  |
| 14:49     | offensive dead ball rebound (2)   |              |           |  |
| 14:49     | 5 WIEKER E foul drawn (2)   |              |           | 30 BURNETT D foul personal (1 - 4)               |
| 14:49     | 2 LUNDBERG B substitution out   |              |           |  |
| 14:49     | 3 SCHOMMER J substitution in  |              |           |  |
| 14:49     |   |              |           | 11 LADD M substitution out                       |
| 14:49     |   |              |           | 14 CARROLL C substitution out                    |
| 14:49     |   |              |           | 20 TESTERMAN A substitution out                  |
| 14:49     |   |              |           | 30 BURNETT D substitution out                    |
| 14:49     |   |              |           | 0 OLDENETTEL C substitution in                   |
| 14:49     |   |              |           | 4 ANDERSEN C substitution in                     |
| 14:49     |   |              |           | 5 ROJAS GOMEZ G substitution in                  |
| 14:49     |   |              |           | 31 VAN DAM J substitution in                     |
| 14:43     | 21 SWANSON S 2pt FG second chance in the paint, layup made (7)            | <b>54-39</b> | <b>15</b> |  |
| 14:24     | 3 SCHOMMER J steal (2)  |              |           | 22 NEUBERT C turnover lost ball (2)              |
| 14:18     | 3 SCHOMMER J 2pt FG fast break from turnover in the paint, layup made (2) | <b>56-39</b> | <b>17</b> |  |
| 13:55     |   |              |           | 5 ROJAS GOMEZ G turnover travel (1)              |
| 13:29     | 12 SCHETNAN K 3pt FG from turnover, jump shot missed                      |              |           |  |
| 13:26     |   |              |           | 4 ANDERSEN C defensive rebound (2)               |
| 13:11     |   | <b>56-41</b> | <b>15</b> | 22 NEUBERT C 2pt FG in the paint, layup made (8) |
| 12:48     | 21 SWANSON S 2pt FG in the paint, layup made (9)                          | <b>58-41</b> | <b>17</b> |  |
| 12:34     |   |              |           | 0 OLDENETTEL C turnover out of bounds (1)        |
| 12:34     | 3 SCHOMMER J substitution out   |              |           |  |
| 12:34     | 2 LUNDBERG B substitution in  |              |           |  |
| 12:34     |   |              |           | 0 OLDENETTEL C substitution out                  |
| 12:34     |   |              |           | 4 ANDERSEN C substitution out                    |
| 12:34     |   |              |           | 5 ROJAS GOMEZ G substitution out                 |
| 12:34     |   |              |           | 22 NEUBERT C substitution out                    |

**Crown (MN) at Gust. Adolphus**01/01/22 Gus Young Court, Saint Peter, MN  
2021-22 Men's Basketball

Game Time: 1:00 PM

Game Duration: 1:29

Attendance: 203

Officials:

| Game Time | GAC   | Score        | Diff      | CRN  |
|-----------|---|--------------|-----------|--|
| 12:34     |   |              |           | 31 VAN DAM J substitution out                                |
| 12:34     |   |              |           | 11 LADD M substitution in                                    |
| 12:34     |   |              |           | 12 BEHNE C substitution in                                   |
| 12:34     |   |              |           | 14 CARROLL C substitution in                                 |
| 12:34     |   |              |           | 20 TESTERMAN A substitution in                               |
| 12:34     |   |              |           | 21 ROYSTON S substitution in                                 |
| 12:15     | 21 SWANSON S 2pt FG from turnover in the paint, layup made (11) | <b>60-41</b> | <b>19</b> |  |
| 12:15     | 4 MALO N assist (2)   |              |           |  |
| 11:55     | 4 MALO N foul personal (2 - 5)                                  |              |           | 21 ROYSTON S foul drawn (3)                                  |
| 11:47     |   | <b>60-43</b> | <b>17</b> | 12 BEHNE C 2pt FG in the paint, layup made (4)               |
| 11:29     | 12 SCHETNAN K 3pt FG , jump shot missed                         |              |           |  |
| 11:26     |   |              |           | 20 TESTERMAN A defensive rebound (5)                         |
| 11:07     |   | <b>60-45</b> | <b>15</b> | 21 ROYSTON S 2pt FG in the paint, layup made (6)             |
| 10:32     | 21 SWANSON S turnover (1)                                       |              |           |  |
| 10:32     | 4 MALO N substitution out                                       |              |           |  |
| 10:32     | 5 WIEKER E substitution out                                     |              |           |  |
| 10:32     | 12 SCHETNAN K substitution out                                  |              |           |  |
| 10:32     | 15 FEAHN K substitution in                                      |              |           |  |
| 10:32     | 22 BIEWEN A substitution in                                     |              |           |  |
| 10:32     | 33 LUNDQUIST P substitution in                                  |              |           |  |
| 10:32     |   |              |           | 11 LADD M substitution out                                   |
| 10:32     |   |              |           | 14 CARROLL C substitution out                                |
| 10:32     |   |              |           | 30 BURNETT D substitution in                                 |
| 10:32     |   |              |           | 31 VAN DAM J substitution in                                 |
| 09:58     | 15 FEAHN K turnover lost ball (3)                               |              |           | 30 BURNETT D steal (1)                                       |
| 09:30     |   | <b>60-47</b> | <b>13</b> | 12 BEHNE C 2pt FG from turnover in the paint, layup made (6) |
| 09:03     | 15 FEAHN K 2pt FG in the paint, layup missed                    |              |           |  |
| 09:00     |   |              |           | 21 ROYSTON S defensive rebound (3)                           |
| 08:55     |   |              |           | 20 TESTERMAN A 2pt FG in the paint, layup blocked            |
| 08:55     | 33 LUNDQUIST P block (3)  |              |           |  |
| 08:49     | 22 BIEWEN A defensive rebound (5)                               |              |           |  |
| 08:45     | 15 FEAHN K foul offensive (2 - 6)                               |              |           | 30 BURNETT D foul drawn (1)                                  |
| 08:45     | 15 FEAHN K turnover offensive (4)                               |              |           |  |
| 08:45     | Timeout 30 Sec  |              |           |  |
| 08:45     | 21 SWANSON S substitution out                                   |              |           |  |
| 08:45     | 4 MALO N substitution in  |              |           |  |
| 08:45     |   |              |           | 21 ROYSTON S substitution out                                |
| 08:45     |   |              |           | 22 NEUBERT C substitution in                                 |
| 08:29     |   |              |           | 20 TESTERMAN A turnover travel (3)                           |
| 08:19     | 4 MALO N 2pt FG from turnover in the paint, layup made (11)     | <b>62-47</b> | <b>15</b> |  |
| 08:19     | 22 BIEWEN A assist (2)  |              |           |  |
| 07:55     |   |              |           | 31 VAN DAM J 3pt FG , jump shot missed                       |
| 07:53     | 22 BIEWEN A defensive rebound (6)                               |              |           |  |
| 07:51     | 4 MALO N 2pt FG fast break in the paint, layup made (13)        | <b>64-47</b> | <b>17</b> |  |
| 07:51     | 22 BIEWEN A assist (3)  |              |           |  |
| 07:35     |   | <b>64-49</b> | <b>15</b> | 12 BEHNE C 2pt FG in the paint, layup made (8)               |
| 07:35     | 33 LUNDQUIST P foul shooting (3 - 7)                            |              |           | 12 BEHNE C foul drawn (1)                                    |
| 07:35     | 2 LUNDBERG B substitution out                                   |              |           |  |



**Crown (MN) at Gust. Adolphus**

01/01/22 Gus Young Court, Saint Peter, MN  
2021-22 Men's Basketball

Game Time: 1:00 PM  
Game Duration: 1:29  
Attendance: 203

Officials:

| Game Time | GAC  | Score        | Diff      | CRN   |
|-----------|--|--------------|-----------|---|
| 07:35     | 15 FEAHN K substitution out                                |              |           |   |
| 07:35     | 33 LUNDQUIST P substitution out                            |              |           |   |
| 07:35     | 3 SCHOMMER J substitution in                               |              |           |   |
| 07:35     | 5 WIEKER E substitution in                                 |              |           |   |
| 07:35     | 21 SWANSON S substitution in                               |              |           |   |
| 07:35     |  |              |           | 20 TESTERMAN A substitution out                                       |
| 07:35     |  |              |           | 22 NEUBERT C substitution out   |
| 07:35     |  |              |           | 30 BURNETT D substitution out   |
| 07:35     |  |              |           | 11 LADD M substitution in   |
| 07:35     |  |              |           | 14 CARROLL C substitution in  |
| 07:35     |  |              |           | 21 ROYSTON S substitution in  |
| 07:35     |  | <b>64-50</b> | <b>14</b> | 12 BEHNE C free throw 1 - 1 made (9)                                  |
| 07:17     | 4 MALO N foul drawn (4)                                    |              |           | 11 LADD M foul personal (1 - 5)                                       |
| 07:09     | 3 SCHOMMER J turnover lost ball (3)                        |              |           | 11 LADD M steal (1)   |
| 07:05     |  | <b>64-52</b> | <b>12</b> | 14 CARROLL C 2pt FG from turnover in the paint, layup made (10)       |
| 07:05     |  |              |           | 11 LADD M assist (4)  |
| 06:48     | 5 WIEKER E 2pt FG in the paint, layup made (7)             | <b>66-52</b> | <b>14</b> |   |
| 06:34     |  | <b>66-54</b> | <b>12</b> | 21 ROYSTON S 2pt FG in the paint, layup made (8)                      |
| 06:34     |  |              |           | 11 LADD M assist (5)  |
| 06:12     | 4 MALO N 2pt FG outside the paint, jump shot made (15)     | <b>68-54</b> | <b>14</b> |   |
| 05:58     |  |              |           | 31 VAN DAM J 3pt FG , jump shot missed                                |
| 05:56     | 5 WIEKER E defensive rebound (2)                           |              |           |   |
| 05:44     | 22 BIEWEN A turnover lost ball (1)                         |              |           | 11 LADD M steal (2)   |
| 05:41     | 5 WIEKER E foul shooting (1 - 8)                           |              |           | 14 CARROLL C foul drawn (2)   |
| 05:41     | 22 BIEWEN A substitution out                               |              |           |   |
| 05:41     | 15 FEAHN K substitution in                                 |              |           |   |
| 05:41     |  | <b>68-55</b> | <b>13</b> | 14 CARROLL C free throw fast break 1 - 2 made (11)                    |
| 05:41     |  | <b>68-56</b> | <b>12</b> | 14 CARROLL C free throw fast break 2 - 2 made (12)                    |
| 05:41     |  |              |           | Timeout 30 Sec  |
| 05:25     | 21 SWANSON S 2pt FG in the paint, layup missed             |              |           |   |
| 05:25     |  |              |           | defensive dead ball rebound (4)                                       |
| 05:25     | 21 SWANSON S foul personal (1 - 9)                         |              |           | 14 CARROLL C foul drawn (3)   |
| 05:25     | 3 SCHOMMER J substitution out                              |              |           |   |
| 05:25     | 21 SWANSON S substitution out                              |              |           |   |
| 05:25     | 2 LUNDBERG B substitution in                               |              |           |   |
| 05:25     | 33 LUNDQUIST P substitution in                             |              |           |   |
| 05:25     |  | <b>68-57</b> | <b>11</b> | 14 CARROLL C 1&1 free throw 1 made (13)                               |
| 05:25     |  | <b>68-58</b> | <b>10</b> | 14 CARROLL C 1&1 free throw 2 made (14)                               |
| 05:18     | 15 FEAHN K turnover lost ball (5)                          |              |           | 21 ROYSTON S steal (2)  |
| 05:03     |  |              |           | 31 VAN DAM J 2pt FG from turnover outside the paint, jump shot missed |
| 05:00     | 4 MALO N defensive rebound (9)                             |              |           |   |
| 04:57     | 33 LUNDQUIST P foul drawn (2)                              |              |           | 31 VAN DAM J foul shooting (4 - 6)                                    |
| 04:57     | 33 LUNDQUIST P free throw fast break 1 - 2 missed          |              |           |   |
| 04:57     | offensive dead ball rebound (3)                            |              |           |   |
| 04:57     | 33 LUNDQUIST P free throw fast break 2 - 2 made (15)       | <b>69-58</b> | <b>11</b> |   |
| 04:42     |  |              |           | 21 ROYSTON S 2pt FG in the paint, layup missed                        |
| 04:39     | 4 MALO N defensive rebound (10)                            |              |           |   |
| 04:28     | 2 LUNDBERG B 2pt FG outside the paint, jump shot made (10) | <b>71-58</b> | <b>13</b> |   |



Officials:

| Game Time | GAC  | Score        | Diff      | CRN   |
|-----------|--|--------------|-----------|---|
| 03:56     |  |              |           | 14 CARROLL C 3pt FG , jump shot missed                            |
| 03:54     | 33 LUNDQUIST P defensive rebound (4)                           |              |           |   |
| 03:38     | 15 FEAHN K 2pt FG outside the paint, jump shot made (8)        | <b>73-58</b> | <b>15</b> |   |
| 03:29     | 15 FEAHN K foul drawn (2)                                      |              |           | 31 VAN DAM J foul shooting (5 - 7)                                |
| 03:18     |  |              |           | 21 ROYSTON S substitution out                                     |
| 03:18     |  |              |           | 31 VAN DAM J substitution out                                     |
| 03:18     |  |              |           | 22 NEUBERT C substitution in                                      |
| 03:18     |  |              |           | 30 BURNETT D substitution in                                      |
| 03:06     | 15 FEAHN K free throw 1 - 1 missed                             |              |           |   |
| 03:00     | 4 MALO N offensive rebound (11)                                |              |           |   |
| 03:00     | Timeout 60 Sec   |              |           |   |
| 03:32     | 5 WIEKER E 2pt FG second chance in the paint, jump shot missed |              |           |   |
| 03:30     |  |              |           | 30 BURNETT D defensive rebound (1)                                |
| 03:15     |  |              |           | 30 BURNETT D 3pt FG , jump shot missed                            |
| 03:13     | 33 LUNDQUIST P defensive rebound (5)                           |              |           |   |
| 03:04     | 15 FEAHN K 3pt FG , jump shot missed                           |              |           |   |
| 03:02     | 5 WIEKER E offensive rebound (3)                               |              |           |   |
| 02:58     | 4 MALO N 3pt FG second chance, jump shot made (18)             | <b>76-58</b> | <b>18</b> |   |
| 02:58     | 2 LUNDBERG B assist (4)  |              |           |   |
| 02:37     |  | <b>76-60</b> | <b>16</b> | 22 NEUBERT C 2pt FG in the paint, layup made (10)                 |
| 02:19     | 5 WIEKER E 2pt FG in the paint, layup made (9)                 | <b>78-60</b> | <b>18</b> |   |
| 02:19     | 33 LUNDQUIST P assist (2)                                      |              |           |   |
| 02:03     |  |              |           | 11 LADD M 3pt FG , jump shot missed                               |
| 02:00     | 15 FEAHN K defensive rebound (7)                               |              |           |   |
| 01:57     | 2 LUNDBERG B substitution out                                  |              |           |   |
| 01:57     | 15 FEAHN K substitution out                                    |              |           |   |
| 01:57     | 10 ZAMMIT J substitution in                                    |              |           |   |
| 01:57     | 12 SCHETNAN K substitution in                                  |              |           |   |
| 01:57     |  |              |           | 11 LADD M substitution out  |
| 01:57     |  |              |           | 14 CARROLL C substitution out                                     |
| 01:57     |  |              |           | 0 OLDENETTEL C substitution in                                    |
| 01:57     |  |              |           | 5 ROJAS GOMEZ G substitution in                                   |
| 01:46     | 33 LUNDQUIST P turnover lost ball (2)                          |              |           | 30 BURNETT D steal (2)  |
| 01:34     |  |              |           | 22 NEUBERT C 3pt FG from turnover, jump shot missed               |
| 01:34     |  |              |           | offensive dead ball rebound (5)                                   |
| 01:34     | 12 SCHETNAN K foul personal (1 - 10)                           |              |           | 30 BURNETT D foul drawn (2)                                       |
| 01:34     |  | <b>78-61</b> | <b>17</b> | 30 BURNETT D free throw 1 - 2 made (1)                            |
| 01:34     | 4 MALO N substitution out                                      |              |           |   |
| 01:34     | 5 WIEKER E substitution out                                    |              |           |   |
| 01:34     | 33 LUNDQUIST P substitution out                                |              |           |   |
| 01:34     | 1 KIENITZ B substitution in                                    |              |           |   |
| 01:34     | 21 SWANSON S substitution in                                   |              |           |   |
| 01:34     | 23 KELLEN D substitution in                                    |              |           |   |
| 01:34     |  | <b>78-62</b> | <b>16</b> | 30 BURNETT D free throw 2 - 2 made (2)                            |
| 01:20     | 10 ZAMMIT J turnover lost ball (1)                             |              |           | 5 ROJAS GOMEZ G steal (1)   |
| 01:17     |  | <b>78-64</b> | <b>14</b> | 5 ROJAS GOMEZ G 2pt FG from turnover in the paint, layup made (2) |
| 01:17     | 10 ZAMMIT J foul shooting (1 - 11)                             |              |           | 5 ROJAS GOMEZ G foul drawn (1)                                    |
| 01:17     |  | <b>78-65</b> | <b>13</b> | 5 ROJAS GOMEZ G free throw 1 - 1 made (3)                         |



Official Basketball Play by Play - Second Half

### Crown (MN) at Gust. Adolphus

01/01/22 Gus Young Court, Saint Peter, MN  
2021-22 Men's Basketball

Game Time: 1:00 PM

Game Duration: 1:29

Attendance: 203

Officials:

| Game Time     | GAC  | Score | Diff | CRN   |
|---------------|--|-------|------|---|
| 01:03         | 23 KELLEN D 2pt FG in the paint, layup made (2)          | 80-65 | 15   |   |
| 00:46         |  | 80-67 | 13   | 30 BURNETT D 2pt FG in the paint, layup made (4)  |
| 00:30         | 23 KELLEN D 2pt FG outside the paint, jump shot made (4) | 82-67 | 15   |   |
| 00:18         |  | 82-69 | 13   | 22 NEUBERT C 2pt FG in the paint, layup made (12) |
| END OF GAME   |  |       |      |   |
| GAC 82-69 CRN |  |       |      |   |



Officials:

**Crown (MN) - 33**

| NO.           | Name                 | F | Min   | FG    |     |      | Rebounds |    |     | Fouls |    | TP | AS | TO | ST | Blocks |    | +/- |
|---------------|----------------------|---|-------|-------|-----|------|----------|----|-----|-------|----|----|----|----|----|--------|----|-----|
|               |                      |   |       | M-A   | M-A | M-A  | OR       | DR | TOT | PF    | FD |    |    |    |    | BS     | BA |     |
| 21            | Seth Royston         | F | 12:19 | 2-3   | 0-0 | 0-0  | 0        | 1  | 1   | 1     | 1  | 4  | 0  | 0  | 2  | 0      | 0  | 0   |
| 31            | Jacob Van Dam        | F | 11:43 | 0-3   | 0-2 | 0-0  | 0        | 0  | 0   | 3     | 0  | 0  | 0  | 0  | 0  | 0      | 0  | -5  |
| 11            | Micah Ladd           | G | 12:51 | 0-2   | 0-2 | 0-2  | 0        | 0  | 0   | 1     | 3  | 0  | 2  | 1  | 2  | 0      | 0  | -5  |
| 14            | Cade Carroll         | G | 12:51 | 2-4   | 0-1 | 5-6  | 0        | 1  | 1   | 1     | 3  | 9  | 0  | 1  | 1  | 0      | 1  | -5  |
| 20            | Alec Testerman       | G | 10:10 | 0-2   | 0-1 | 0-0  | 0        | 1  | 1   | 0     | 0  | 0  | 0  | 2  | 0  | 0      | 1  | -2  |
| 30            | Drew Burnett         |   | 09:12 | 1-3   | 0-2 | 2-2  | 0        | 1  | 1   | 1     | 2  | 4  | 1  | 0  | 2  | 0      | 0  | -1  |
| 22            | Cade Neubert         |   | 07:41 | 3-4   | 0-1 | 0-0  | 0        | 0  | 0   | 0     | 0  | 6  | 0  | 1  | 0  | 0      | 0  | -4  |
| 0             | Christian Oldenettel |   | 04:12 | 0-0   | 0-0 | 0-0  | 0        | 0  | 0   | 0     | 0  | 0  | 0  | 1  | 0  | 0      | 0  | 1   |
| 4             | Cole Andersen        |   | 02:15 | 0-0   | 0-0 | 0-0  | 0        | 1  | 1   | 0     | 0  | 0  | 0  | 0  | 0  | 0      | 0  | -4  |
| 5             | Gabe Rojas Gomez     |   | 04:12 | 1-1   | 0-0 | 1-1  | 0        | 0  | 0   | 0     | 1  | 3  | 0  | 1  | 1  | 0      | 0  | 1   |
| 12            | Carter Behne         |   | 12:34 | 3-3   | 0-0 | 1-1  | 0        | 0  | 0   | 0     | 1  | 7  | 0  | 0  | 0  | 0      | 0  | 4   |
| Team          |                      |   |       |       |     |      | 0        | 0  | 0   |       |    | 0  |    | 0  |    |        |    |     |
| <b>Totals</b> |                      |   |       | 12-25 | 0-9 | 9-12 | 0        | 5  | 5   | 7     | 11 | 33 | 3  | 7  | 8  | 0      | 2  | -4  |

| Shooting By Period  |       |       |
|---------------------|-------|-------|
| 2 <sup>nd</sup> FG% | 12-25 | 48.0% |
| 3PT%                | 0-9   | 0.0%  |
| FT%                 | 9-12  | 75%   |
| GM FG%              | 12-25 | 48.0% |
| 3PT%                | 0-9   | 0.0%  |
| FT%                 | 9-12  | 75.0% |

Dead Ball Rebounds: 2, 2

Technical Fouls::NONE

**Gust. Adolphus - 37**

| NO.           | Name            | F | Min   | FG    |     |     | Rebounds |    |     | Fouls |    | TP | AS | TO | ST | Blocks |    | +/- |
|---------------|-----------------|---|-------|-------|-----|-----|----------|----|-----|-------|----|----|----|----|----|--------|----|-----|
|               |                 |   |       | M-A   | M-A | M-A | OR       | DR | TOT | PF    | FD |    |    |    |    | BS     | BA |     |
| 4             | Nolan Malo      | F | 14:07 | 4-5   | 1-1 | 0-0 | 1        | 3  | 4   | 1     | 3  | 9  | 1  | 0  | 0  | 0      | 0  | 7   |
| 15            | Kaleb Feahn     | F | 11:14 | 2-5   | 0-2 | 0-1 | 1        | 4  | 5   | 1     | 1  | 4  | 0  | 3  | 0  | 0      | 0  | 8   |
| 22            | Adam Biewen     | F | 09:04 | 1-1   | 0-0 | 0-0 | 1        | 2  | 3   | 1     | 0  | 2  | 2  | 1  | 0  | 1      | 0  | 3   |
| 2             | Benji Lundberg  | G | 13:38 | 1-1   | 0-0 | 0-0 | 0        | 1  | 1   | 0     | 0  | 2  | 1  | 1  | 0  | 0      | 0  | 8   |
| 3             | Jordan Schommer | G | 08:38 | 1-3   | 0-1 | 0-0 | 0        | 0  | 0   | 2     | 1  | 2  | 1  | 2  | 2  | 0      | 0  | 5   |
| 33            | Peter Lundquist |   | 09:20 | 1-2   | 1-1 | 1-2 | 0        | 2  | 2   | 2     | 1  | 4  | 1  | 2  | 0  | 1      | 0  | 8   |
| 5             | Evan Wieker     |   | 11:16 | 2-3   | 0-0 | 0-0 | 1        | 2  | 3   | 1     | 1  | 4  | 0  | 0  | 1  | 0      | 0  | 4   |
| 12            | Kip Schetnan    |   | 07:12 | 0-2   | 0-2 | 0-0 | 0        | 0  | 0   | 1     | 0  | 0  | 0  | 0  | 0  | 0      | 0  | -3  |
| 21            | Spencer Swanson |   | 10:26 | 3-4   | 0-0 | 0-0 | 0        | 0  | 0   | 1     | 0  | 6  | 0  | 1  | 0  | 0      | 0  | -7  |
| 10            | Jack Zammit     |   | 01:57 | 0-0   | 0-0 | 0-0 | 0        | 0  | 0   | 1     | 0  | 0  | 0  | 1  | 0  | 0      | 0  | -5  |
| 1             | Brady Kienitz   |   | 01:34 | 0-0   | 0-0 | 0-0 | 0        | 0  | 0   | 0     | 0  | 0  | 0  | 0  | 0  | 0      | 0  | -4  |
| 23            | Dawson Kellen   |   | 01:34 | 2-2   | 0-0 | 0-0 | 0        | 0  | 0   | 0     | 0  | 4  | 0  | 0  | 0  | 0      | 0  | -4  |
| Team          |                 |   |       |       |     |     | 0        | 0  | 0   |       |    | 0  |    | 0  |    |        |    |     |
| <b>Totals</b> |                 |   |       | 17-28 | 2-7 | 1-3 | 4        | 14 | 18  | 11    | 7  | 37 | 6  | 11 | 3  | 2      | 0  | 4   |

| Shooting By Period  |       |       |
|---------------------|-------|-------|
| 2 <sup>nd</sup> FG% | 17-28 | 60.7% |
| 3PT%                | 2-7   | 28.6% |
| FT%                 | 1-3   | 33.3% |
| GM FG%              | 17-28 | 60.7% |
| 3PT%                | 2-7   | 28.6% |
| FT%                 | 1-3   | 33.3% |

Dead Ball Rebounds: 2, 0

Technical Fouls::NONE

|                  | CRN                       | GAC                        |
|------------------|---------------------------|----------------------------|
| Biggest lead     | 0 (1 <sup>st</sup> 20:00) | 19 (2 <sup>nd</sup> 12:15) |
| Best Scoring Run | 6(2 <sup>nd</sup> 9:30)   | 9(2 <sup>nd</sup> 14:18)   |
| Lead Changes     | 0                         |                            |
| Times Tied       | 0                         |                            |
| Time with Lead   | 00:00                     | 19:45                      |

| Points from   | CRN | GAC |
|---------------|-----|-----|
| Turnovers     | 11  | 6   |
| Paint         | 24  | 22  |
| Second Chance | 2   | 9   |
| Fast Breaks   | 4   | 5   |
| Bench         | 20  | 18  |

|     | Period by Period Scoring |     |     |
|-----|--------------------------|-----|-----|
|     | 1st                      | 2nd | TOT |
| CRN | 36                       | 33  | 69  |
| GAC | 45                       | 37  | 82  |



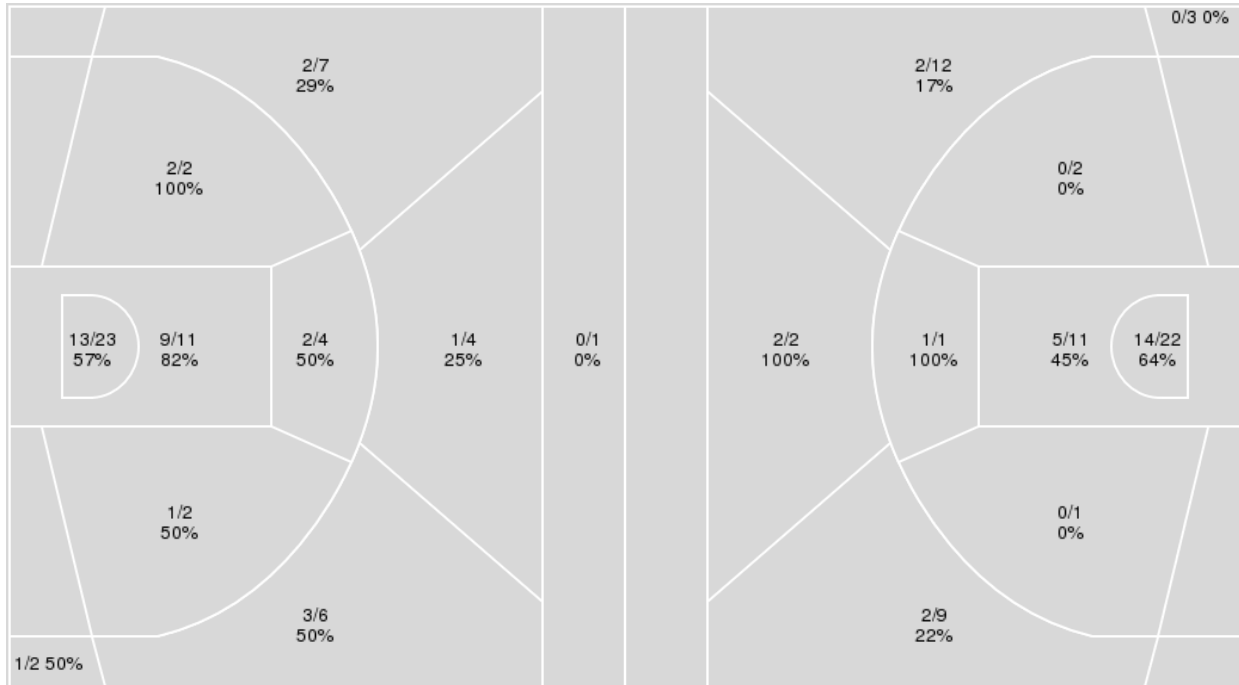
**Officials:**

{ Players => All; } FG Types => All; Results => All;

{ Players => All; } FG Types => All; Results => All;

**Gust. Adolphus**

**Crown (MN)**



| Gust. Adolphus | M/A   | %  |
|----------------|-------|----|
| Field Goals    | 34/62 | 55 |
| 2 Points       | 27/42 | 64 |
| 3 Points       | 7/20  | 35 |
| Free Throws    | 7/9   | 78 |

| Crown (MN)  | M/A   | %  |
|-------------|-------|----|
| Field Goals | 26/63 | 41 |
| 2 Points    | 20/37 | 54 |
| 3 Points    | 6/26  | 23 |
| Free Throws | 11/14 | 79 |





**Crown (MN) at Gust. Adolphus**

01/01/22 Gus Young Court, Saint Peter, MN  
2021-22 Men's Basketball

Game Time: 1:00 PM  
Game Duration: 1:29  
Attendance: 203

Officials:

**Crown (MN)**

| No | Name                 | Mins  |       | Score   |         | Points Diff |     | Points per Min |      | Assists |     | Rebounds |     | Steals |     | Turnovers |     |
|----|----------------------|-------|-------|---------|---------|-------------|-----|----------------|------|---------|-----|----------|-----|--------|-----|-----------|-----|
|    |                      | On    | Off   | On      | Off     | On          | Off | On             | Off  | On      | Off | On       | Off | On     | Off | On        | Off |
| 0  | Christian Oldenettel | 06:08 | 33:52 | 14 - 20 | 55 - 62 | -6          | -7  | 2.28           | 1.62 | 1       | 11  | 1        | 23  | 2      | 8   | 3         | 10  |
| 4  | Cole Andersen        | 05:38 | 34:22 | 2 - 14  | 67 - 68 | -12         | -1  | 0.36           | 1.95 | 0       | 12  | 7        | 17  | 0      | 10  | 6         | 7   |
| 5  | Gabe Rojas Gomez     | 04:12 | 35:48 | 11 - 10 | 58 - 72 | 1           | -14 | 2.62           | 1.62 | 0       | 12  | 1        | 23  | 2      | 8   | 3         | 10  |
| 11 | Micah Ladd           | 30:51 | 09:09 | 54 - 63 | 15 - 19 | -9          | -4  | 1.75           | 1.64 | 12      | 0   | 17       | 7   | 7      | 3   | 8         | 5   |
| 12 | Carter Behne         | 18:39 | 21:21 | 36 - 45 | 33 - 37 | -9          | -4  | 1.93           | 1.55 | 5       | 7   | 8        | 16  | 6      | 4   | 3         | 10  |
| 14 | Cade Carroll         | 26:54 | 13:06 | 47 - 54 | 22 - 28 | -7          | -6  | 1.75           | 1.68 | 10      | 2   | 14       | 10  | 7      | 3   | 7         | 6   |
| 20 | Alec Testerman       | 28:14 | 11:46 | 44 - 48 | 25 - 34 | -4          | -9  | 1.56           | 2.12 | 9       | 3   | 22       | 2   | 5      | 5   | 10        | 3   |
| 21 | Seth Royston         | 24:36 | 15:24 | 29 - 39 | 40 - 43 | -10         | -3  | 1.18           | 2.60 | 6       | 6   | 18       | 6   | 6      | 4   | 7         | 6   |
| 22 | Cade Neubert         | 17:57 | 22:03 | 42 - 48 | 27 - 34 | -6          | -7  | 2.34           | 1.22 | 6       | 6   | 9        | 15  | 4      | 6   | 7         | 6   |
| 30 | Drew Burnett         | 09:12 | 30:48 | 17 - 18 | 52 - 64 | -1          | -12 | 1.85           | 1.69 | 1       | 11  | 2        | 22  | 3      | 7   | 2         | 11  |
| 31 | Jacob Van Dam        | 27:39 | 12:21 | 49 - 51 | 20 - 31 | -2          | -11 | 1.77           | 1.62 | 10      | 2   | 21       | 3   | 8      | 2   | 9         | 4   |

**Gust. Adolphus**

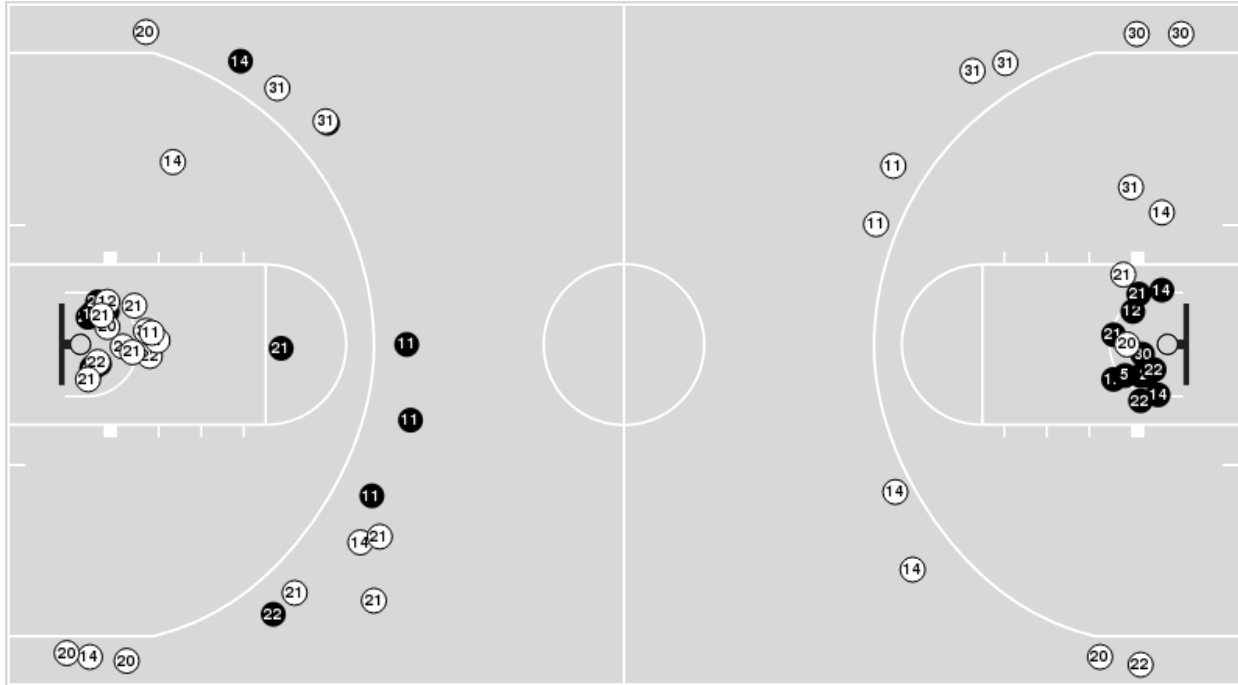
| No | Name            | Mins  |       | Score   |         | Points Diff |     | Points per Min |      | Assists |     | Rebounds |     | Steals |     | Turnovers |     |
|----|-----------------|-------|-------|---------|---------|-------------|-----|----------------|------|---------|-----|----------|-----|--------|-----|-----------|-----|
|    |                 | On    | Off   | On      | Off     | On          | Off | On             | Off  | On      | Off | On       | Off | On     | Off | On        | Off |
| 1  | Brady Kienitz   | 01:34 | 38:26 | 4 - 8   | 78 - 61 | -4          | 17  | 2.55           | 2.03 | 0       | 17  | 0        | 38  | 0      | 6   | 1         | 17  |
| 2  | Benji Lundberg  | 28:07 | 11:53 | 54 - 36 | 28 - 33 | 18          | -5  | 1.92           | 2.36 | 12      | 5   | 31       | 7   | 5      | 1   | 11        | 7   |
| 3  | Jordan Schommer | 19:56 | 20:04 | 35 - 33 | 47 - 36 | 2           | 11  | 1.76           | 2.34 | 4       | 13  | 18       | 20  | 4      | 2   | 9         | 9   |
| 4  | Nolan Malo      | 27:21 | 12:39 | 54 - 46 | 28 - 23 | 8           | 5   | 1.97           | 2.21 | 13      | 4   | 28       | 10  | 3      | 3   | 12        | 6   |
| 5  | Evan Wieker     | 20:46 | 19:14 | 49 - 43 | 33 - 26 | 6           | 7   | 2.36           | 1.72 | 10      | 7   | 19       | 19  | 3      | 3   | 9         | 9   |
| 10 | Jack Zammit     | 05:17 | 34:43 | 18 - 17 | 64 - 52 | 1           | 12  | 3.41           | 1.84 | 5       | 12  | 4        | 34  | 0      | 6   | 2         | 16  |
| 12 | Kip Schetnan    | 11:53 | 28:07 | 26 - 29 | 56 - 40 | -3          | 16  | 2.19           | 1.99 | 6       | 11  | 6        | 32  | 2      | 4   | 6         | 12  |
| 15 | Kaleb Feahn     | 25:06 | 14:54 | 47 - 29 | 35 - 40 | 18          | -5  | 1.87           | 2.35 | 10      | 7   | 30       | 8   | 5      | 1   | 11        | 7   |
| 21 | Spencer Swanson | 18:00 | 22:00 | 40 - 45 | 42 - 24 | -5          | 18  | 2.22           | 1.91 | 8       | 9   | 12       | 26  | 2      | 4   | 9         | 9   |
| 22 | Adam Biewen     | 22:27 | 17:33 | 38 - 28 | 44 - 41 | 10          | 3   | 1.69           | 2.51 | 8       | 9   | 22       | 16  | 3      | 3   | 11        | 7   |
| 23 | Dawson Kellen   | 01:34 | 38:26 | 4 - 8   | 78 - 61 | -4          | 17  | 2.55           | 2.03 | 0       | 17  | 0        | 38  | 0      | 6   | 1         | 17  |
| 33 | Peter Lundquist | 17:59 | 22:01 | 41 - 23 | 41 - 46 | 18          | -5  | 2.28           | 1.86 | 9       | 8   | 20       | 18  | 3      | 3   | 8         | 10  |



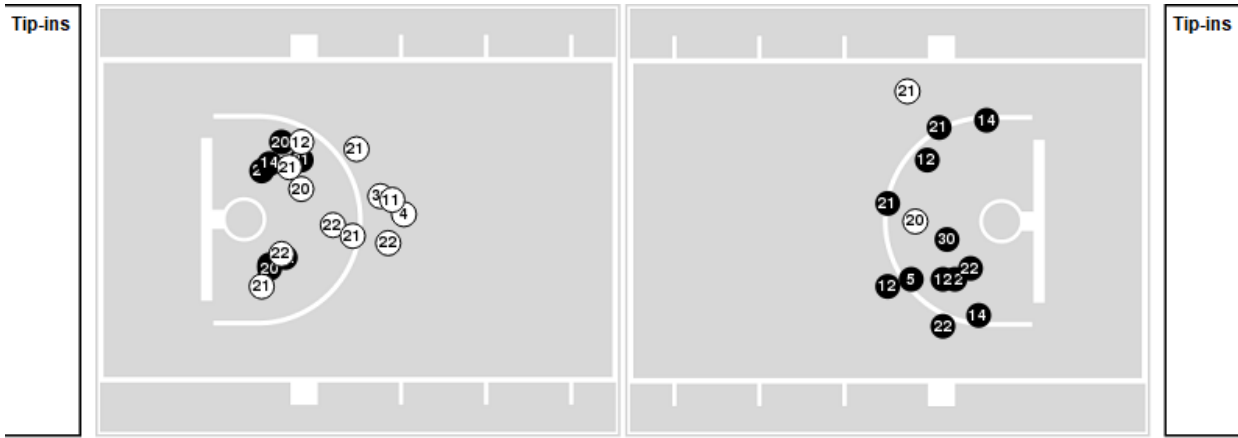
Officials:

Players => AllFG Types=>AllResults=>All  
**Crown (MN)**

**All Field Goals**



**Blow Up Chart**



● Made ○ Missed N - Player Number

| Crown (MN)  | M/A   | %  |
|-------------|-------|----|
| Field Goals | 26/63 | 41 |
| 2 Points    | 20/37 | 54 |
| 3 Points    | 6/26  | 23 |
| Free Throws | 11/14 | 79 |

| Crown (MN)           | M/A          | %   |
|----------------------|--------------|-----|
| Points in the Paint  | 38 (19 / 33) | 58  |
| Fast Break Points    | 9 (6/6)      | 100 |
| Second Chance Points | 5 (3/11)     | 27  |
| Effective FG%        | 46           |     |

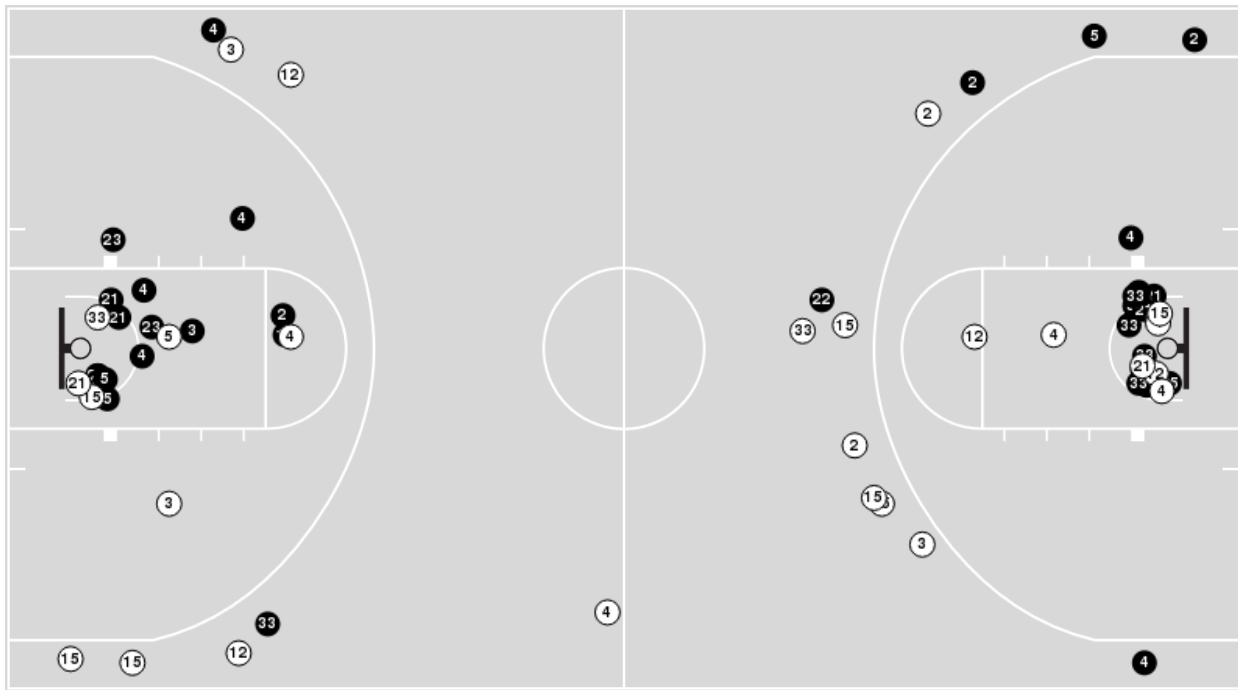


Officials:

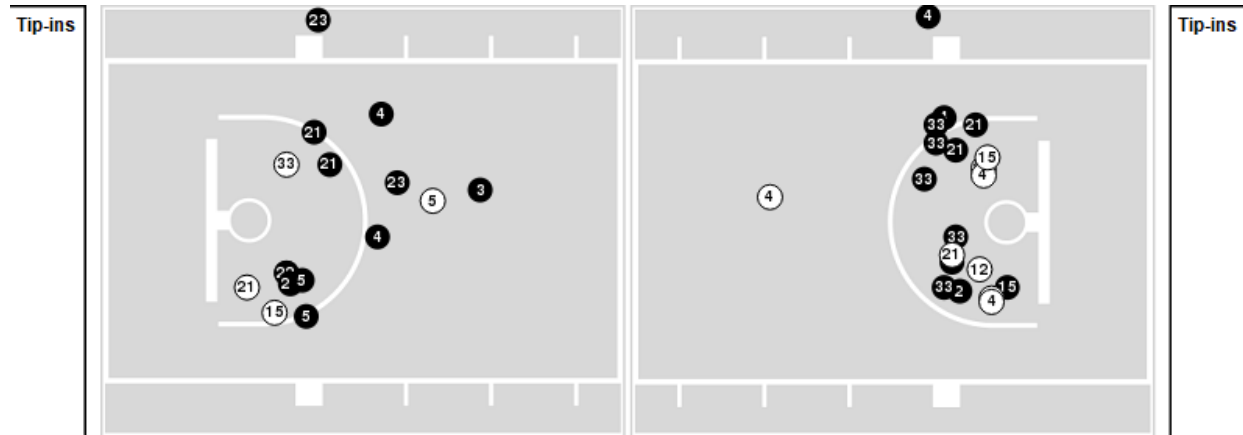
Players => AllFG Types=>AllResults=>All

**Gust. Adolphus**

**All Field Goals**



**Blow Up Chart**



● Made ○ Missed N - Player Number

| Gust. Adolphus | M/A   | %  |
|----------------|-------|----|
| Field Goals    | 34/62 | 55 |
| 2 Points       | 27/42 | 64 |
| 3 Points       | 7/20  | 35 |
| Free Throws    | 7/9   | 78 |

| Gust. Adolphus       | M/A          | %  |
|----------------------|--------------|----|
| Points in the Paint  | 44 (22 / 34) | 65 |
| Fast Break Points    | 9 (7/8)      | 88 |
| Second Chance Points | 16 (8/12)    | 67 |
| Effective FG%        | 60           |    |



Official Basketball Rotations Summary - Final  
**Crown (MN) at Gust. Adolphus**  
 01/01/22 Gus Young Court, Saint Peter, MN  
 2021-22 Men's Basketball

Game Time: 1:00 PM  
 Game Duration: 1:29  
 Attendance: 203

Officials:

**Crown (MN)**

| Lineup  | Quarter On | Time On | Quarter Off | Time Off | Time on Court | Score | Score Diff | Reb | Stl | Tov | Ass | PPP    |
|---|------------|---------|-------------|----------|---------------|-------|------------|-----|-----|-----|-----|--------|
| 11- Ladd M/ 14- Carroll C/ 20- Testerman A/ 21- Royston S/ 31- Van Dam J/       | 1          | 20:00   | 1           | 16:18    | 03:42         | 7-4   | 3          | 4   | 0   | 0   | 2   | 1.0000 |
| 11- Ladd M/ 14- Carroll C/ 20- Testerman A/ 22- Neubert C/ 31- Van Dam J/       | 1          | 16:18   | 1           | 14:43    | 01:35         | 5-5   | 0          | 2   | 0   | 0   | 0   | 2.5000 |
| 11- Ladd M/ 12- Behne C/ 20- Testerman A/ 22- Neubert C/ 31- Van Dam J/         | 1          | 14:43   | 1           | 13:19    | 01:24         | 5-4   | 1          | 0   | 0   | 0   | 2   | 1.6667 |
| 0- Oldenettel C/ 11- Ladd M/ 12- Behne C/ 14- Carroll C/ 22- Neubert C/         | 1          | 13:19   | 1           | 11:23    | 01:56         | 3-10  | -7         | 0   | 0   | 0   | 1   | 1.0000 |
| 11- Ladd M/ 14- Carroll C/ 20- Testerman A/ 21- Royston S/ 31- Van Dam J/       | 1          | 11:23   | 1           | 09:13    | 02:10         | 2-2   | 0          | 2   | 0   | 0   | 1   | 0.6667 |
| 4- Andersen C/ 12- Behne C/ 20- Testerman A/ 21- Royston S/ 31- Van Dam J/      | 1          | 09:13   | 1           | 07:29    | 01:44         | 0-5   | -5         | 5   | 0   | 1   | 0   | 0.0000 |
| 4- Andersen C/ 12- Behne C/ 20- Testerman A/ 22- Neubert C/ 31- Van Dam J/      | 1          | 07:29   | 1           | 07:13    | 00:16         | 0-0   | 0          | 0   | 0   | 0   | 0   | 0.0000 |
| 4- Andersen C/ 11- Ladd M/ 20- Testerman A/ 22- Neubert C/ 31- Van Dam J/       | 1          | 07:13   | 1           | 07:13    | 00:00         | 0-0   | 0          | 0   | 0   | 0   | 0   | 0.0000 |
| 11- Ladd M/ 14- Carroll C/ 20- Testerman A/ 22- Neubert C/ 31- Van Dam J/       | 1          | 07:13   | 1           | 04:41    | 02:32         | 12-5  | 7          | 2   | 2   | 1   | 3   | 2.0000 |
| 11- Ladd M/ 12- Behne C/ 14- Carroll C/ 20- Testerman A/ 21- Royston S/         | 1          | 04:41   | 1           | 03:56    | 00:45         | 0-2   | -2         | 0   | 0   | 1   | 0   | 0.0000 |
| 4- Andersen C/ 11- Ladd M/ 14- Carroll C/ 20- Testerman A/ 21- Royston S/       | 1          | 03:56   | 1           | 02:33    | 01:23         | 0-3   | -3         | 1   | 0   | 2   | 0   | 0.0000 |
| 11- Ladd M/ 20- Testerman A/ 21- Royston S/ 22- Neubert C/ 31- Van Dam J/       | 1          | 02:33   | 2           | 20:00    | 02:33         | 2-5   | -3         | 3   | 0   | 1   | 0   | 0.5155 |
| 11- Ladd M/ 14- Carroll C/ 20- Testerman A/ 21- Royston S/ 31- Van Dam J/       | 2          | 20:00   | 2           | 17:46    | 02:14         | 1-2   | -1         | 1   | 2   | 2   | 0   | 0.2049 |
| 11- Ladd M/ 14- Carroll C/ 20- Testerman A/ 21- Royston S/ 30- Burnett D/       | 2          | 17:46   | 2           | 15:47    | 01:59         | 2-5   | -3         | 0   | 0   | 0   | 1   | 0.6667 |
| 11- Ladd M/ 14- Carroll C/ 20- Testerman A/ 22- Neubert C/ 30- Burnett D/       | 2          | 15:47   | 2           | 14:49    | 00:58         | 0-0   | 0          | 0   | 0   | 1   | 0   | 0.0000 |
| 0- Oldenettel C/ 4- Andersen C/ 5- Rojas Gomez G/ 22- Neubert C/ 31- Van Dam J/ | 2          | 14:49   | 2           | 12:34    | 02:15         | 2-6   | -4         | 1   | 0   | 3   | 0   | 0.5000 |
| 11- Ladd M/ 12- Behne C/ 14- Carroll C/ 20- Testerman A/ 21- Royston S/         | 2          | 12:34   | 2           | 10:32    | 02:02         | 4-2   | 2          | 1   | 0   | 0   | 0   | 2.0000 |
| 12- Behne C/ 20- Testerman A/ 21- Royston S/ 30- Burnett D/ 31- Van Dam J/      | 2          | 10:32   | 2           | 08:45    | 01:47         | 2-0   | 2          | 1   | 1   | 0   | 0   | 1.0000 |
| 12- Behne C/ 20- Testerman A/ 22- Neubert C/ 30- Burnett D/ 31- Van Dam J/      | 2          | 08:45   | 2           | 07:35    | 01:10         | 2-4   | -2         | 0   | 0   | 1   | 0   | 0.6667 |
| 11- Ladd M/ 12- Behne C/ 14- Carroll C/ 21- Royston S/ 31- Van Dam J/           | 2          | 07:35   | 2           | 03:18    | 04:17         | 9-9   | 0          | 0   | 3   | 0   | 2   | 1.0976 |
| 11- Ladd M/ 12- Behne C/ 14- Carroll C/ 22- Neubert C/ 30- Burnett D/           | 2          | 03:18   | 2           | 01:57    | 01:21         | 2-5   | -3         | 1   | 0   | 0   | 0   | 0.6667 |
| 0- Oldenettel C/ 5- Rojas Gomez G/ 12- Behne C/ 22- Neubert C/ 30- Burnett D/   | 2          | 01:57   | 2           | 00:00    | 01:57         | 9-4   | 5          | 0   | 2   | 0   | 0   | 1.6917 |



Officials:

**Gust. Adolphus**

| Lineup  | Quarter On | Time On | Quarter Off | Time Off | Time on Court | Score | Score Diff | Reb | Stl | Tov | Ass | PPP    |
|---|------------|---------|-------------|----------|---------------|-------|------------|-----|-----|-----|-----|--------|
| 2- Lundberg B/3- Schommer J/4- Malo N/15- Feahn K/22- Biewen A/         | 1          | 20:00   | 1           | 16:18    | 03:42         | 4-7   | -3         | 4   | 0   | 1   | 1   | 0.5814 |
| 2- Lundberg B/5- Wieker E/15- Feahn K/22- Biewen A/33- Lundquist P/     | 1          | 16:18   | 1           | 14:43    | 01:35         | 5-5   | 0          | 0   | 0   | 0   | 1   | 2.5000 |
| 5- Wieker E/10- Zammit J/12- Schetnan K/21- Swanson S/33- Lundquist P/  | 1          | 14:43   | 1           | 13:19    | 01:24         | 4-5   | -1         | 2   | 0   | 0   | 1   | 2.0000 |
| 4- Malo N/5- Wieker E/10- Zammit J/12- Schetnan K/21- Swanson S/        | 1          | 13:19   | 1           | 11:23    | 01:56         | 10-3  | 7          | 2   | 0   | 0   | 4   | 2.5000 |
| 2- Lundberg B/4- Malo N/15- Feahn K/21- Swanson S/22- Biewen A/         | 1          | 11:23   | 1           | 10:26    | 00:57         | 2-2   | 0          | 1   | 0   | 1   | 1   | 1.0000 |
| 2- Lundberg B/3- Schommer J/4- Malo N/15- Feahn K/22- Biewen A/         | 1          | 10:26   | 1           | 09:13    | 01:13         | 0-0   | 0          | 1   | 0   | 0   | 0   | 0.0000 |
| 2- Lundberg B/3- Schommer J/15- Feahn K/22- Biewen A/33- Lundquist P/   | 1          | 09:13   | 1           | 07:29    | 01:44         | 5-0   | 5          | 1   | 1   | 0   | 1   | 1.4535 |
| 3- Schommer J/4- Malo N/5- Wieker E/12- Schetnan K/22- Biewen A/        | 1          | 07:29   | 1           | 07:13    | 00:16         | 0-0   | 0          | 0   | 0   | 0   | 0   | 0.0000 |
| 3- Schommer J/4- Malo N/5- Wieker E/12- Schetnan K/21- Swanson S/       | 1          | 07:13   | 1           | 06:08    | 01:05         | 0-6   | -6         | 1   | 0   | 2   | 0   | 0.0000 |
| 2- Lundberg B/3- Schommer J/4- Malo N/5- Wieker E/21- Swanson S/        | 1          | 06:08   | 1           | 04:41    | 01:27         | 5-6   | -1         | 1   | 0   | 0   | 1   | 1.6667 |
| 2- Lundberg B/4- Malo N/5- Wieker E/15- Feahn K/21- Swanson S/          | 1          | 04:41   | 1           | 03:56    | 00:45         | 2-0   | 2          | 2   | 1   | 0   | 0   | 1.0000 |
| 2- Lundberg B/5- Wieker E/15- Feahn K/21- Swanson S/33- Lundquist P/    | 1          | 03:56   | 1           | 03:56    | 00:00         | 1-0   | 1          | 0   | 0   | 0   | 0   | 2.2727 |
| 2- Lundberg B/5- Wieker E/15- Feahn K/22- Biewen A/33- Lundquist P/     | 1          | 03:56   | 1           | 02:54    | 01:02         | 0-0   | 0          | 2   | 0   | 1   | 0   | 0.0000 |
| 2- Lundberg B/3- Schommer J/15- Feahn K/22- Biewen A/33- Lundquist P/   | 1          | 02:54   | 1           | 01:53    | 01:01         | 4-1   | 3          | 1   | 1   | 1   | 0   | 1.3889 |
| 3- Schommer J/4- Malo N/15- Feahn K/22- Biewen A/33- Lundquist P/       | 1          | 01:53   | 1           | 01:03    | 00:50         | 0-1   | -1         | 1   | 0   | 1   | 0   | 0.0000 |
| 2- Lundberg B/4- Malo N/15- Feahn K/22- Biewen A/33- Lundquist P/       | 1          | 01:03   | 2           | 20:00    | 01:03         | 3-0   | 3          | 1   | 0   | 0   | 1   | 1.5000 |
| 2- Lundberg B/3- Schommer J/4- Malo N/15- Feahn K/22- Biewen A/         | 2          | 20:00   | 2           | 17:45    | 02:15         | 2-1   | 1          | 4   | 1   | 2   | 0   | 0.5000 |
| 2- Lundberg B/3- Schommer J/15- Feahn K/22- Biewen A/33- Lundquist P/   | 2          | 17:45   | 2           | 15:47    | 01:58         | 5-2   | 3          | 3   | 0   | 0   | 1   | 1.6667 |
| 2- Lundberg B/5- Wieker E/12- Schetnan K/15- Feahn K/33- Lundquist P/   | 2          | 15:47   | 2           | 15:27    | 00:20         | 0-0   | 0          | 0   | 1   | 1   | 0   | 0.0000 |
| 2- Lundberg B/5- Wieker E/12- Schetnan K/21- Swanson S/33- Lundquist P/ | 2          | 15:27   | 2           | 15:13    | 00:14         | 0-0   | 0          | 0   | 0   | 0   | 0   | 0.0000 |
| 2- Lundberg B/4- Malo N/5- Wieker E/12- Schetnan K/21- Swanson S/       | 2          | 15:13   | 2           | 14:49    | 00:24         | 0-0   | 0          | 1   | 0   | 0   | 0   | 0.0000 |
| 3- Schommer J/4- Malo N/5- Wieker E/12- Schetnan K/21- Swanson S/       | 2          | 14:49   | 2           | 12:34    | 02:15         | 6-2   | 4          | 0   | 1   | 0   | 0   | 1.5000 |
| 2- Lundberg B/4- Malo N/5- Wieker E/12- Schetnan K/21- Swanson S/       | 2          | 12:34   | 2           | 10:32    | 02:02         | 2-4   | -2         | 0   | 0   | 1   | 1   | 0.6667 |
| 2- Lundberg B/15- Feahn K/21- Swanson S/22- Biewen A/33- Lundquist P/   | 2          | 10:32   | 2           | 08:45    | 01:47         | 0-2   | -2         | 1   | 0   | 2   | 0   | 0.0000 |
| 2- Lundberg B/4- Malo N/15- Feahn K/22- Biewen A/33- Lundquist P/       | 2          | 08:45   | 2           | 07:35    | 01:10         | 4-2   | 2          | 1   | 0   | 0   | 2   | 2.0000 |
| 3- Schommer J/4- Malo N/5- Wieker E/21- Swanson S/22- Biewen A/         | 2          | 07:35   | 2           | 05:41    | 01:54         | 4-5   | -1         | 1   | 0   | 2   | 0   | 1.0000 |
| 3- Schommer J/4- Malo N/5- Wieker E/15- Feahn K/21- Swanson S/          | 2          | 05:41   | 2           | 05:25    | 00:16         | 0-2   | -2         | 0   | 0   | 0   | 0   | 0.0000 |
| 2- Lundberg B/4- Malo N/5- Wieker E/15- Feahn K/33- Lundquist P/        | 2          | 05:25   | 2           | 01:57    | 03:28         | 10-4  | 6          | 7   | 0   | 1   | 2   | 1.5823 |
| 4- Malo N/5- Wieker E/10- Zammit J/12- Schetnan K/33- Lundquist P/      | 2          | 01:57   | 2           | 01:34    | 00:23         | 0-1   | -1         | 0   | 0   | 1   | 0   | 0.0000 |
| 1- Kienitz B/10- Zammit J/12- Schetnan K/21- Swanson S/23- Kellen D/    | 2          | 01:34   | 2           | 00:00    | 01:34         | 4-8   | -4         | 0   | 0   | 1   | 0   | 1.3333 |



Official Basketball Line Up Analysis - Final  
**Crown (MN) at Gust. Adolphus**  
 01/01/22 Gus Young Court, Saint Peter, MN  
 2021-22 Men's Basketball

Game Time: 1:00 PM  
 Game Duration: 1:29  
 Attendance: 203

Officials:

**Crown (MN)**

| Lineup  | Time  | Score | Score Diff | Pts/Min | Reb | Stl | Tov | Ass | PPP    |
|---|-------|-------|------------|---------|-----|-----|-----|-----|--------|
| 11- Ladd M/ 14- Carroll C/ 20- Testerman A/ 21- Royston S/ 31- Van Dam J/       | 08:06 | 10-8  | 2          | 1.2346  | 7   | 2   | 2   | 3   | 0.6720 |
| 11- Ladd M/ 12- Behne C/ 14- Carroll C/ 21- Royston S/ 31- Van Dam J/           | 04:17 | 9-9   | 0          | 2.1012  | 0   | 3   | 0   | 2   | 1.0976 |
| 11- Ladd M/ 14- Carroll C/ 20- Testerman A/ 22- Neubert C/ 31- Van Dam J/       | 04:07 | 17-10 | 7          | 4.1296  | 4   | 2   | 1   | 3   | 2.1250 |
| 11- Ladd M/ 12- Behne C/ 14- Carroll C/ 20- Testerman A/ 21- Royston S/         | 02:47 | 4-4   | 0          | 1.4371  | 1   | 0   | 1   | 0   | 1.3333 |
| 11- Ladd M/ 20- Testerman A/ 21- Royston S/ 22- Neubert C/ 31- Van Dam J/       | 02:33 | 2-5   | -3         | 0.7843  | 3   | 0   | 1   | 0   | 0.5155 |
| 0- Oldenettel C/ 4- Andersen C/ 5- Rojas Gomez G/ 22- Neubert C/ 31- Van Dam J/ | 02:15 | 2-6   | -4         | 0.8889  | 1   | 0   | 3   | 0   | 0.5000 |
| 11- Ladd M/ 14- Carroll C/ 20- Testerman A/ 21- Royston S/ 30- Burnett D/       | 01:59 | 2-5   | -3         | 1.0084  | 0   | 0   | 0   | 1   | 0.6667 |
| 0- Oldenettel C/ 5- Rojas Gomez G/ 12- Behne C/ 22- Neubert C/ 30- Burnett D/   | 01:57 | 9-4   | 5          | 4.6154  | 0   | 2   | 0   | 0   | 1.6917 |
| 0- Oldenettel C/ 11- Ladd M/ 12- Behne C/ 14- Carroll C/ 22- Neubert C/         | 01:56 | 3-10  | -7         | 1.5517  | 0   | 0   | 0   | 1   | 1.0000 |
| 12- Behne C/ 20- Testerman A/ 21- Royston S/ 30- Burnett D/ 31- Van Dam J/      | 01:47 | 2-0   | 2          | 1.1215  | 1   | 1   | 0   | 0   | 1.0000 |
| 4- Andersen C/ 12- Behne C/ 20- Testerman A/ 21- Royston S/ 31- Van Dam J/      | 01:44 | 0-5   | -5         | 0.0000  | 5   | 0   | 1   | 0   | 0.0000 |
| 11- Ladd M/ 12- Behne C/ 20- Testerman A/ 22- Neubert C/ 31- Van Dam J/         | 01:24 | 5-4   | 1          | 3.5714  | 0   | 0   | 0   | 2   | 1.6667 |
| 4- Andersen C/ 11- Ladd M/ 14- Carroll C/ 20- Testerman A/ 21- Royston S/       | 01:23 | 0-3   | -3         | 0.0000  | 1   | 0   | 2   | 0   | 0.0000 |
| 11- Ladd M/ 12- Behne C/ 14- Carroll C/ 22- Neubert C/ 30- Burnett D/           | 01:21 | 2-5   | -3         | 1.4815  | 1   | 0   | 0   | 0   | 0.6667 |
| 12- Behne C/ 20- Testerman A/ 22- Neubert C/ 30- Burnett D/ 31- Van Dam J/      | 01:10 | 2-4   | -2         | 1.7143  | 0   | 0   | 1   | 0   | 0.6667 |
| 11- Ladd M/ 14- Carroll C/ 20- Testerman A/ 22- Neubert C/ 30- Burnett D/       | 00:58 | 0-0   | 0          | 0.0000  | 0   | 0   | 1   | 0   | 0.0000 |
| 4- Andersen C/ 12- Behne C/ 20- Testerman A/ 22- Neubert C/ 31- Van Dam J/      | 00:16 | 0-0   | 0          | 0.0000  | 0   | 0   | 0   | 0   | 0.0000 |
| 4- Andersen C/ 11- Ladd M/ 20- Testerman A/ 22- Neubert C/ 31- Van Dam J/       | 00:00 | 0-0   | 0          | NaN     | 0   | 0   | 0   | 0   | 0.0000 |



**Officials:**

**Gust. Adolphus**

| Lineup  | Time  | Score | Score Diff | Pts/Min | Reb | Stl | Tov | Ass | PPP    |
|---|-------|-------|------------|---------|-----|-----|-----|-----|--------|
| 2- Lundberg B/ 3- Schommer J/ 4- Malo N/ 15- Feahn K/ 22- Biewen A/         | 07:10 | 6-8   | -2         | 0.8372  | 9   | 1   | 3   | 1   | 0.5515 |
| 2- Lundberg B/ 3- Schommer J/ 15- Feahn K/ 22- Biewen A/ 33- Lundquist P/   | 04:43 | 14-3  | 11         | 2.9682  | 5   | 2   | 1   | 2   | 1.5021 |
| 2- Lundberg B/ 4- Malo N/ 5- Wieker E/ 15- Feahn K/ 33- Lundquist P/        | 03:28 | 10-4  | 6          | 2.8846  | 7   | 0   | 1   | 2   | 1.5823 |
| 3- Schommer J/ 4- Malo N/ 5- Wieker E/ 12- Schetnan K/ 21- Swanson S/       | 03:20 | 6-8   | -2         | 1.8000  | 1   | 1   | 2   | 0   | 0.8571 |
| 2- Lundberg B/ 5- Wieker E/ 15- Feahn K/ 22- Biewen A/ 33- Lundquist P/     | 02:37 | 5-5   | 0          | 1.9108  | 2   | 0   | 1   | 1   | 1.6667 |
| 2- Lundberg B/ 4- Malo N/ 5- Wieker E/ 12- Schetnan K/ 21- Swanson S/       | 02:26 | 2-4   | -2         | 0.8219  | 1   | 0   | 1   | 1   | 0.5000 |
| 2- Lundberg B/ 4- Malo N/ 15- Feahn K/ 22- Biewen A/ 33- Lundquist P/       | 02:13 | 7-2   | 5          | 3.1579  | 2   | 0   | 0   | 3   | 1.7500 |
| 4- Malo N/ 5- Wieker E/ 10- Zammit J/ 12- Schetnan K/ 21- Swanson S/        | 01:56 | 10-3  | 7          | 5.1724  | 2   | 0   | 0   | 4   | 2.5000 |
| 3- Schommer J/ 4- Malo N/ 5- Wieker E/ 21- Swanson S/ 22- Biewen A/         | 01:54 | 4-5   | -1         | 2.1053  | 1   | 0   | 2   | 0   | 1.0000 |
| 2- Lundberg B/ 15- Feahn K/ 21- Swanson S/ 22- Biewen A/ 33- Lundquist P/   | 01:47 | 0-2   | -2         | 0.0000  | 1   | 0   | 2   | 0   | 0.0000 |
| 1- Kienitz B/ 10- Zammit J/ 12- Schetnan K/ 21- Swanson S/ 23- Kellen D/    | 01:34 | 4-8   | -4         | 2.5532  | 0   | 0   | 1   | 0   | 1.3333 |
| 2- Lundberg B/ 3- Schommer J/ 4- Malo N/ 5- Wieker E/ 21- Swanson S/        | 01:27 | 5-6   | -1         | 3.4483  | 1   | 0   | 0   | 1   | 1.6667 |
| 5- Wieker E/ 10- Zammit J/ 12- Schetnan K/ 21- Swanson S/ 33- Lundquist P/  | 01:24 | 4-5   | -1         | 2.8571  | 2   | 0   | 0   | 1   | 2.0000 |
| 2- Lundberg B/ 4- Malo N/ 15- Feahn K/ 21- Swanson S/ 22- Biewen A/         | 00:57 | 2-2   | 0          | 2.1053  | 1   | 0   | 1   | 1   | 1.0000 |
| 3- Schommer J/ 4- Malo N/ 15- Feahn K/ 22- Biewen A/ 33- Lundquist P/       | 00:50 | 0-1   | -1         | 0.0000  | 1   | 0   | 1   | 0   | 0.0000 |
| 2- Lundberg B/ 4- Malo N/ 5- Wieker E/ 15- Feahn K/ 21- Swanson S/          | 00:45 | 2-0   | 2          | 2.6667  | 2   | 1   | 0   | 0   | 1.0000 |
| 4- Malo N/ 5- Wieker E/ 10- Zammit J/ 12- Schetnan K/ 33- Lundquist P/      | 00:23 | 0-1   | -1         | 0.0000  | 0   | 0   | 1   | 0   | 0.0000 |
| 2- Lundberg B/ 5- Wieker E/ 12- Schetnan K/ 15- Feahn K/ 33- Lundquist P/   | 00:20 | 0-0   | 0          | 0.0000  | 0   | 1   | 1   | 0   | 0.0000 |
| 3- Schommer J/ 4- Malo N/ 5- Wieker E/ 12- Schetnan K/ 22- Biewen A/        | 00:16 | 0-0   | 0          | 0.0000  | 0   | 0   | 0   | 0   | 0.0000 |
| 3- Schommer J/ 4- Malo N/ 5- Wieker E/ 15- Feahn K/ 21- Swanson S/          | 00:16 | 0-2   | -2         | 0.0000  | 0   | 0   | 0   | 0   | 0.0000 |
| 2- Lundberg B/ 5- Wieker E/ 12- Schetnan K/ 21- Swanson S/ 33- Lundquist P/ | 00:14 | 0-0   | 0          | 0.0000  | 0   | 0   | 0   | 0   | 0.0000 |
| 2- Lundberg B/ 5- Wieker E/ 15- Feahn K/ 21- Swanson S/ 33- Lundquist P/    | 00:00 | 1-0   | 1          | ∞       | 0   | 0   | 0   | 0   | 2.2727 |