



Official Basketball Box Score - Final
Gust. Adolphus at Wis.-Platteville
 11/13/21 Williams Fieldhouse, Platteville, Wis.
 UW-Platteville vs. Gust. Adolphus

Game Time: 7:00 PM
 Game Duration: 1:24
 Attendance: 454

Officials: Peter Juzenas, Tom Turckes, Chris Arneson

Gust. Adolphus - 62

Record: 0-2

NO.	Name	Min	FG			Rebounds			Fouls		TP	AS	TO	ST	Blocks		+/-
			M-A	3P-M-A	FT-M-A	OR	DR	TOT	PF	FD					BS	BA	
4	Nolan Malo	F 24:19	3-9	0-3	0-0	0	2	2	5	1	6	0	1	2	0	0	-15
15	Kaleb Feahn	F 21:49	3-11	1-7	2-2	1	2	3	3	3	9	1	4	1	0	1	-11
22	Adam Biewen	F 31:19	1-2	0-1	0-0	0	3	3	0	0	2	1	0	2	0	0	-19
32	Jake Guse	C 20:31	2-4	0-0	3-4	2	1	3	3	3	7	1	2	1	1	1	-14
2	Benji Lundberg	G 25:51	4-8	1-3	0-0	1	5	6	1	0	9	2	2	0	0	0	-13
33	Peter Lundquist	22:16	4-11	1-3	1-2	2	3	5	2	4	10	3	2	0	1	0	6
3	Jordan Schommer	20:20	4-7	2-5	0-0	0	1	1	0	0	10	0	0	0	1	0	-3
5	Evan Wieker	18:06	1-4	0-2	0-0	1	5	6	1	0	2	0	1	0	0	0	4
21	Spencer Swanson	13:33	3-5	1-1	0-0	1	1	2	2	1	7	0	0	0	0	2	-2
1	Brady Kienitz	00:29	0-0	0-0	0-0	0	0	0	0	0	0	0	0	0	0	0	-2
10	Jack Zammit	00:29	0-0	0-0	0-0	0	0	0	0	0	0	0	0	0	0	0	-2
12	Kip Schetnan	00:29	0-0	0-0	0-0	0	0	0	0	0	0	0	0	0	0	0	-2
23	Dawson Kellen	00:29	0-0	0-0	0-0	0	0	0	0	0	0	0	0	0	0	0	-2
Team						3	2	5			0		0				
Totals			25-61	6-25	6-8	11	25	36	17	12	62	8	12	6	3	4	-15

Shooting By Period		
1st FG%	11-29	37.9%
3PT%	2-11	18.2%
FT%	3-4	75%
2nd FG%	14-32	43.8%
3PT%	4-14	28.6%
FT%	3-4	75%
GM FG%	25-61	41.0%
3PT%	6-25	24.0%
FT%	6-8	75.0%

Dead Ball Rebounds: 1, 0

Technical Fouls::NONE

Wis.-Platteville - 77

Record: 3-0

NO.	Name	Min	FG			Rebounds			Fouls		TP	AS	TO	ST	Blocks		+/-
			M-A	3P-M-A	FT-M-A	OR	DR	TOT	PF	FD					BS	BA	
5	Kyle Tuma	F 30:14	4-6	3-4	2-2	1	8	9	4	3	13	2	2	0	0	0	19
30	Justin Stovall	F 29:45	4-11	3-8	0-1	2	6	8	2	1	11	1	3	1	2	1	11
3	Blake McCann	G 31:34	5-11	0-1	0-1	1	3	4	0	2	10	2	1	2	0	0	9
4	Quentin Shields	G 33:48	9-15	2-3	2-2	2	3	5	0	3	22	3	1	1	0	1	18
14	Logan Pearson	G 31:51	5-9	2-4	1-2	2	5	7	3	3	13	1	2	2	1	0	17
0	Jack Huml	05:28	0-1	0-0	0-0	0	0	0	0	0	0	1	0	0	0	1	-3
40	Brad Nies	07:54	1-5	0-0	3-4	3	0	3	2	2	5	0	1	0	0	0	-2
2	Alex Ranney	16:33	0-0	0-0	1-2	0	0	0	1	3	1	0	0	0	1	0	0
12	Ben Probst	09:13	0-3	0-3	0-0	0	0	0	0	0	0	2	0	0	0	0	6
1	Clayton Jenny	00:44	0-0	0-0	0-0	0	0	0	0	0	0	0	0	0	0	0	0
11	Braden Nies	00:44	1-1	0-0	0-0	0	0	0	0	0	2	0	0	0	0	0	0
24	Charlie Bender	00:44	0-0	0-0	0-0	0	0	0	0	0	0	0	0	0	0	0	0
42	Oliver Barnes	00:44	0-0	0-0	0-0	0	0	0	0	0	0	0	0	0	0	0	0
44	Cam Paske	00:44	0-0	0-0	0-0	0	0	0	0	0	0	0	0	0	0	0	0
Team						1	1	2			0		0				
Totals			29-62	10-23	9-14	12	26	38	12	17	77	12	10	6	4	3	15

Shooting By Period		
1st FG%	13-34	38.2%
3PT%	4-10	40.0%
FT%	4-6	66.7%
2nd FG%	16-28	57.1%
3PT%	6-13	46.2%
FT%	5-8	62.5%
GM FG%	29-62	46.8%
3PT%	10-23	43.5%
FT%	9-14	64.3%

Dead Ball Rebounds: 1, 0

Technical Fouls::NONE

	GAC	UWP
Biggest lead	2 (1 st 8:49)	18 (2 nd 2:38)
Best Scoring Run	5(1 st 14:59)	7(1 st 6:44)
Lead Changes	4	
Times Tied	6	
Time with Lead	01:18	35:40

	GAC	UWP
Points from		
Turnovers	10	13
Paint	30	30
Second Chance	12	9
Fast Breaks	7	4
Bench	29	8

	Period by Period Scoring		
	1st	2nd	TOT
GAC	27	35	62
UWP	34	43	77



Official Basketball Play by Play - First Half
Gust. Adolphus at Wis.-Platteville
 11/13/21 Williams Fieldhouse, Platteville, Wis.
 UW-Platteville vs. Gust. Adolphus

Game Time: 7:00 PM
Game Duration: 1:24
Attendance: 454

Officials: Peter Juzenas, Tom Turckes, Chris Arneson

Period 1

Quarter Starters:

UWP	3 McCann B	4 Shields Q	5 Tuma K	14 Pearson L	30 Stovall J
GAC	2 Lundberg B	4 Malo N	15 Feahn K	22 Biewen A	32 Guse J

Game Time	UWP	Score	Diff	GAC
20:00	30 STOVALL J jumpball won			32 GUSE J jumpball lost
19:48	30 STOVALL J 3pt FG , jump shot missed			
19:45				2 LUNDBERG B defensive rebound (1)
19:27				32 GUSE J turnover travel (1)
18:59	14 PEARSON L 2pt FG from turnover in the paint, jump shot made (2)	2-0	2	
18:41	30 STOVALL J steal (1)			15 FEAHN K turnover lost ball (1)
18:40	30 STOVALL J turnover travel (1)			
18:22				2 LUNDBERG B 3pt FG from turnover, jump shot missed
18:19	30 STOVALL J defensive rebound (1)			
18:04	30 STOVALL J 3pt FG , jump shot missed			
18:01				22 BIEWEN A defensive rebound (1)
17:47				15 FEAHN K 3pt FG , jump shot missed
17:46	30 STOVALL J defensive rebound (2)			
17:28	3 MCCANN B 3pt FG , jump shot missed			
17:26	5 TUMA K offensive rebound (1)			
17:21	4 SHIELDS Q 2pt FG second chance outside the paint, jump shot missed			
17:20				15 FEAHN K defensive rebound (1)
17:20				15 FEAHN K turnover travel (2)
17:20				32 GUSE J substitution out
17:20				33 LUNDQUIST P substitution in
17:17	14 PEARSON L 3pt FG from turnover, jump shot made (5)	5-0	5	
17:17	3 MCCANN B assist (1)			
16:57	14 PEARSON L foul personal (1 - 1)			15 FEAHN K foul drawn (1)
16:54		5-2	3	4 MALO N 2pt FG in the paint, jump shot made (2)
16:35	5 TUMA K 2pt FG in the paint, driving layup made (2)	7-2	5	
16:16	4 SHIELDS Q substitution out			
16:16	30 STOVALL J substitution out			
16:16	0 HUML J substitution in			
16:16	40 NIES B substitution in			
16:16				2 LUNDBERG B substitution out
16:16				15 FEAHN K substitution out
16:16				3 SCHOMMER J substitution in
16:16				5 WIEKER E substitution in
16:13				4 MALO N 2pt FG outside the paint, jump shot missed
16:10	5 TUMA K defensive rebound (2)			
15:59	14 PEARSON L 2pt FG in the paint, layup missed			
15:56	40 NIES B offensive rebound (1)			
15:56	40 NIES B 2pt FG second chance in the paint, layup missed			
15:53				3 SCHOMMER J defensive rebound (1)
15:44		7-4	3	4 MALO N 2pt FG outside the paint, jump shot made (4)
15:44				33 LUNDQUIST P assist (1)
15:24	40 NIES B 2pt FG in the paint, layup missed			



Official Basketball Play by Play - First Half
Gust. Adolphus at Wis.-Platteville
 11/13/21 Williams Fieldhouse, Platteville, Wis.
 UW-Platteville vs. Gust. Adolphus

Game Time: 7:00 PM
Game Duration: 1:24
Attendance: 454

Officials: Peter Juzenas, Tom Turckes, Chris Arneson

Game Time	UWP	Score	Diff	GAC
15:22	3 MCCANN B offensive rebound (1)			
15:14	3 MCCANN B 2pt FG second chance in the paint, layup missed			
15:12	40 NIES B offensive rebound (2)			
15:10	40 NIES B turnover lost ball (1)			22 BIEWEN A steal (1)
14:59		7-7	0	3 SCHOMMER J 3pt FG from turnover, jump shot made (3)
14:59				33 LUNDQUIST P assist (2)
14:43	3 MCCANN B 2pt FG in the paint, jump shot made (2)	9-7	2	
14:28				33 LUNDQUIST P 2pt FG in the paint, jump shot missed
14:25	14 PEARSON L defensive rebound (1)			
14:12	40 NIES B foul drawn (1)			33 LUNDQUIST P foul shooting (1 - 1)
14:12	0 HUML J substitution out			
14:12	5 TUMA K substitution out			
14:12	14 PEARSON L substitution out			
14:12	2 RANNEY A substitution in			
14:12	4 SHIELDS Q substitution in			
14:12	12 PROBST B substitution in			
14:12				4 MALO N substitution out
14:12				22 BIEWEN A substitution out
14:12				15 FEAHN K substitution in
14:12				32 GUSE J substitution in
14:12	40 NIES B free throw 1 - 2 made (1)	10-7	3	
14:12	40 NIES B free throw 2 - 2 missed			
14:11				5 WIEKER E defensive rebound (1)
13:56				32 GUSE J 2pt FG in the paint, layup missed
13:54				15 FEAHN K offensive rebound (2)
13:51		10-9	1	15 FEAHN K 2pt FG second chance in the paint, jump shot made (2)
13:34	40 NIES B 2pt FG in the paint, layup missed			
13:32	40 NIES B offensive rebound (3)			
13:31	40 NIES B 2pt FG second chance in the paint, layup missed			
13:29				32 GUSE J defensive rebound (1)
13:17		10-11	-1	33 LUNDQUIST P 2pt FG in the paint, layup made (2)
13:17				32 GUSE J assist (1)
12:50	4 SHIELDS Q 2pt FG in the paint, layup missed			
12:47				33 LUNDQUIST P defensive rebound (1)
12:43				15 FEAHN K 3pt FG , jump shot missed
12:41	3 MCCANN B defensive rebound (2)			
12:39	3 MCCANN B foul drawn (1)			15 FEAHN K foul personal (1 - 2)
12:39				Timeout media
12:39	2 RANNEY A substitution out			
12:39	3 MCCANN B substitution out			
12:39	40 NIES B substitution out			
12:39	5 TUMA K substitution in			
12:39	14 PEARSON L substitution in			
12:39	30 STOVALL J substitution in			
12:39				3 SCHOMMER J substitution out
12:39				5 WIEKER E substitution out
12:39				33 LUNDQUIST P substitution out
12:39				2 LUNDBERG B substitution in



Official Basketball Play by Play - First Half
Gust. Adolphus at Wis.-Platteville
 11/13/21 Williams Fieldhouse, Platteville, Wis.
 UW-Platteville vs. Gust. Adolphus

Game Time: 7:00 PM
Game Duration: 1:24
Attendance: 454

Officials: Peter Juzenas, Tom Turckes, Chris Arneson

Game Time	UWP	Score	Diff	GAC
12:39				4 MALO N substitution in
12:39				22 BIEWEN A substitution in
12:39	4 SHIELDS Q foul drawn (1)			2 LUNDBERG B foul shooting (1 - 3)
12:39	4 SHIELDS Q free throw fast break 1 - 2 made (1)	11-11	0	
12:39	4 SHIELDS Q free throw fast break 2 - 2 made (2)	12-11	1	
12:25	4 SHIELDS Q foul drawn (2)			4 MALO N foul offensive (1 - 4)
12:25				4 MALO N turnover offensive (1)
12:17	14 PEARSON L turnover travel (1)			
11:52				15 FEAHN K 2pt FG from turnover in the paint, jump shot blocked
11:52	14 PEARSON L block (1)			
11:46	14 PEARSON L defensive rebound (2)			
11:45	14 PEARSON L foul drawn (1)			15 FEAHN K foul personal (2 - 5)
11:45				15 FEAHN K substitution out
11:45				5 WIEKER E substitution in
11:32	12 PROBST B 3pt FG , jump shot missed			
11:28				5 WIEKER E defensive rebound (2)
11:22	14 PEARSON L steal (1)			2 LUNDBERG B turnover lost ball (1)
11:16	14 PEARSON L 2pt FG fast break from turnover in the paint, layup made (7)	14-11	3	
10:55				4 MALO N 3pt FG , jump shot missed
10:51	30 STOVALL J defensive rebound (3)			
10:37	14 PEARSON L 2pt FG in the paint, layup missed			
10:33				5 WIEKER E defensive rebound (3)
10:12				22 BIEWEN A 3pt FG , jump shot missed
10:08	defensive rebound (13)			
10:08	12 PROBST B substitution out			
10:08	14 PEARSON L substitution out			
10:08	2 RANNEY A substitution in			
10:08	3 MCCANN B substitution in			
10:08				4 MALO N substitution out
10:08				32 GUSE J substitution out
10:08				21 SWANSON S substitution in
10:08				33 LUNDQUIST P substitution in
09:47	2 RANNEY A foul personal (1 - 2)			21 SWANSON S foul drawn (1)
09:30		14-14	0	21 SWANSON S 3pt FG , jump shot made (3)
09:04	30 STOVALL J 2pt FG in the paint, layup missed			
09:00				33 LUNDQUIST P defensive rebound (2)
08:49		14-16	-2	21 SWANSON S 2pt FG in the paint, layup made (5)
08:28	4 SHIELDS Q 2pt FG outside the paint, jump shot made (4)	16-16	0	
08:13				2 LUNDBERG B 3pt FG , jump shot missed
08:08				5 WIEKER E offensive rebound (4)
08:07		16-18	-2	5 WIEKER E 2pt FG second chance in the paint, layup made (2)
07:48	4 SHIELDS Q 2pt FG outside the paint, jump shot made (6)	18-18	0	
07:40				33 LUNDQUIST P 3pt FG , jump shot missed
07:37	30 STOVALL J defensive rebound (4)			
07:24	5 TUMA K 3pt FG , jump shot made (5)	21-18	3	
07:24	4 SHIELDS Q assist (1)			
07:08	5 TUMA K foul drawn (1)			5 WIEKER E foul offensive (1 - 6)
07:08				5 WIEKER E turnover offensive (1)



Official Basketball Play by Play - First Half
Gust. Adolphus at Wis.-Platteville
 11/13/21 Williams Fieldhouse, Platteville, Wis.
 UW-Platteville vs. Gust. Adolphus

Game Time: 7:00 PM
Game Duration: 1:24
Attendance: 454

Officials: Peter Juzenas, Tom Turckes, Chris Arneson

Game Time	UWP	Score	Diff	GAC
07:08	Timeout media			
07:08	4 SHIELDS Q substitution out			
07:08	5 TUMA K substitution out			
07:08	30 STOVALL J substitution out			
07:08	0 HUML J substitution in			
07:08	14 PEARSON L substitution in			
07:08	40 NIES B substitution in			
07:08				2 LUNDBERG B substitution out
07:08				5 WIEKER E substitution out
07:08				3 SCHOMMER J substitution in
07:08				4 MALO N substitution in
06:44	3 MCCANN B 2pt FG from turnover in the paint, driving layup made (4)	23-18	5	
06:44	0 HUML J assist (1)			
06:25				33 LUNDQUIST P 2pt FG in the paint, layup missed
06:22	3 MCCANN B defensive rebound (3)			
06:03	0 HUML J 2pt FG in the paint, jump shot blocked			
06:03				3 SCHOMMER J block (1)
05:58				21 SWANSON S defensive rebound (1)
05:47	3 MCCANN B steal (1)			33 LUNDQUIST P turnover lost ball (1)
05:42	3 MCCANN B 2pt FG from turnover in the paint, layup missed			
05:39				33 LUNDQUIST P defensive rebound (3)
05:28		23-20	3	22 BIEWEN A 2pt FG in the paint, layup made (2)
05:00	2 RANNEY A foul drawn (1)			21 SWANSON S foul personal (1 - 7)
05:00	0 HUML J substitution out			
05:00	3 MCCANN B substitution out			
05:00	40 NIES B substitution out			
05:00	4 SHIELDS Q substitution in			
05:00	12 PROBST B substitution in			
05:00	30 STOVALL J substitution in			
05:00				21 SWANSON S substitution out
05:00				22 BIEWEN A substitution out
05:00				33 LUNDQUIST P substitution out
05:00				2 LUNDBERG B substitution in
05:00				5 WIEKER E substitution in
05:00				32 GUSE J substitution in
05:00	2 RANNEY A 1&1 free throw 1 made (1)	24-20	4	
05:00	2 RANNEY A 1&1 free throw 2 missed			
05:00				2 LUNDBERG B defensive rebound (2)
04:56		24-22	2	3 SCHOMMER J 2pt FG in the paint, layup made (5)
04:56				2 LUNDBERG B assist (1)
04:29	14 PEARSON L 3pt FG , jump shot missed			
04:29				defensive rebound (16)
04:29	2 RANNEY A substitution out			
04:29	5 TUMA K substitution in			
03:59		24-24	0	2 LUNDBERG B 2pt FG outside the paint, jump shot made (2)
03:40	30 STOVALL J 3pt FG , jump shot made (3)	27-24	3	
03:40	12 PROBST B assist (1)			
03:19				5 WIEKER E 2pt FG outside the paint, jump shot missed



Official Basketball Play by Play - First Half
Gust. Adolphus at Wis.-Platteville
 11/13/21 Williams Fieldhouse, Platteville, Wis.
 UW-Platteville vs. Gust. Adolphus

Game Time: 7:00 PM
Game Duration: 1:24
Attendance: 454

Officials: Peter Juzenas, Tom Turckes, Chris Arneson

Game Time	UWP	Score	Diff	GAC
03:16	14 PEARSON L defensive rebound (3)			
03:10	5 TUMA K 3pt FG , jump shot made (8)	30-24	6	
03:10	12 PROBST B assist (2)			
02:48				4 MALO N 3pt FG , jump shot missed
02:43				32 GUSE J offensive rebound (2)
02:43	30 STOVALL J foul shooting (1 - 3)			32 GUSE J foul drawn (1)
02:43				32 GUSE J free throw 1 - 2 missed
02:43				offensive dead ball rebound (1)
02:43	12 PROBST B substitution out			
02:43	3 MCCANN B substitution in			
02:43				3 SCHOMMER J substitution out
02:43				4 MALO N substitution out
02:43				22 BIEWEN A substitution in
02:43				33 LUNDQUIST P substitution in
02:43		30-25	5	32 GUSE J free throw 2 - 2 made (1)
02:30	4 SHIELDS Q 2pt FG in the paint, layup blocked			
02:30				32 GUSE J block (1)
02:26				2 LUNDBERG B defensive rebound (3)
02:24				2 LUNDBERG B 2pt FG outside the paint, jump shot missed
02:22	30 STOVALL J defensive rebound (5)			
02:17	4 SHIELDS Q 2pt FG in the paint, layup missed			
02:15				2 LUNDBERG B defensive rebound (4)
02:03				2 LUNDBERG B turnover (2)
01:44	4 SHIELDS Q 3pt FG from turnover, jump shot missed			
01:40				22 BIEWEN A defensive rebound (2)
01:16				32 GUSE J 2pt FG in the paint, layup blocked
01:16	30 STOVALL J block (1)			
01:16				offensive rebound (21)
01:16				5 WIEKER E substitution out
01:16				3 SCHOMMER J substitution in
01:11				33 LUNDQUIST P 2pt FG second chance in the paint, layup missed
01:08	5 TUMA K defensive rebound (3)			
00:56	5 TUMA K 2pt FG in the paint, layup missed			
00:53	30 STOVALL J offensive rebound (6)			
00:52	30 STOVALL J 2pt FG second chance in the paint, layup made (5)	32-25	7	
00:25	5 TUMA K foul shooting (1 - 4)			32 GUSE J foul drawn (2)
00:25		32-26	6	32 GUSE J free throw 1 - 2 made (2)
00:25				33 LUNDQUIST P substitution out
00:25				5 WIEKER E substitution in
00:25		32-27	5	32 GUSE J free throw 2 - 2 made (3)
00:04	4 SHIELDS Q 2pt FG in the paint, driving layup made (8)	34-27	7	
00:01				5 WIEKER E 3pt FG , jump shot missed
00:00				offensive rebound (22)
END OF PERIOD				
UWP 34-27 GAC				



Official Basketball Box Score - First Half
Gust. Adolphus at Wis.-Platteville
 11/13/21 Williams Fieldhouse, Platteville, Wis.
 UW-Platteville vs. Gust. Adolphus

Game Time: 7:00 PM
 Game Duration: 1:24
 Attendance: 454

Officials: Peter Juzenas, Tom Turckes, Chris Arneson

Gust. Adolphus - 27

NO.	Name	F	Min	FG			3P			FT			Rebounds			Fouls		TP	AS	TO	ST	Blocks		+/-
				M-A	M-A	M-A	OR	DR	TOT	PF	FD	BS	BA											
4	Nolan Malo	F	12:44	2-5	0-2	0-0	0	0	0	1	0	4	0	1	0	0	0	0	0	0	0	0	-9	
15	Kaleb Feahn	F	06:11	1-4	0-2	0-0	1	1	2	2	1	2	0	2	0	2	0	0	0	0	1	0	-4	
22	Adam Biewen	F	16:10	1-2	0-1	0-0	0	2	2	0	0	2	0	0	0	1	0	0	0	0	0	0	-7	
32	Jake Guse	C	11:44	0-2	0-0	3-4	1	1	2	0	2	3	1	1	0	1	1	0	1	1	0	0	-7	
2	Benji Lundberg	G	14:15	1-4	0-2	0-0	0	4	4	1	0	2	1	2	0	2	0	0	0	0	0	0	-13	
33	Peter Lundquist		12:06	1-5	0-1	0-0	0	3	3	1	0	2	2	1	0	2	1	0	0	0	0	0	3	
3	Jordan Schommer		09:18	2-2	1-1	0-0	0	1	1	0	0	5	0	0	0	0	0	0	0	1	0	0	1	
5	Evan Wieker		12:24	1-3	0-1	0-0	1	3	4	1	0	2	0	1	0	0	0	0	0	0	0	0	1	
21	Spencer Swanson		05:08	2-2	1-1	0-0	0	1	1	1	1	5	0	0	0	0	0	0	0	0	0	0	0	
Team							2	1	3			0			0									
Totals					11-29	2-11	3-4	5	17	22	7	4	27	4	8	1	2	2					-7	

Shooting By Period		
1st FG%	11-29	37.9%
3PT%	2-11	18.2%
FT%	3-4	75%
GM FG%	11-29	37.9%
3PT%	2-11	18.2%
FT%	3-4	75.0%

Dead Ball Rebounds: 1, 0

Technical Fouls::NONE

Wis.-Platteville - 34

NO.	Name	F	Min	FG			3P			FT			Rebounds			Fouls		TP	AS	TO	ST	Blocks		+/-
				M-A	M-A	M-A	OR	DR	TOT	PF	FD	BS	BA											
5	Kyle Tuma	F	15:48	3-4	2-2	0-0	1	2	3	1	1	8	0	0	0	0	0	0	0	0	0	0	11	
30	Justin Stovall	F	14:15	2-5	1-3	0-0	1	5	6	1	0	5	0	1	1	1	0	0	0	1	0	13		
3	Blake McCann	G	15:12	2-5	0-1	0-0	1	2	3	0	1	4	1	0	1	0	0	0	0	0	0	0		
4	Quentin Shields	G	15:48	3-8	0-1	2-2	0	0	0	0	2	8	1	0	0	0	0	1	10	0	1	10		
14	Logan Pearson	G	15:27	3-6	1-2	0-0	0	3	3	1	1	7	0	1	1	1	0	0	1	0	10			
0	Jack Huml		04:12	0-1	0-0	0-0	0	0	0	0	0	0	1	0	0	0	0	0	0	1	0	-3		
40	Brad Nies		05:45	0-4	0-0	1-2	3	0	3	0	1	1	0	1	0	0	0	0	0	0	0	-6		
2	Alex Ranney		07:12	0-0	0-0	1-2	0	0	0	1	1	1	0	0	0	0	0	0	0	0	0	-4		
12	Ben Probst		06:21	0-1	0-1	0-0	0	0	0	0	0	0	2	0	0	0	0	0	0	0	0	4		
Team							0	1	1			0			0									
Totals					13-34	4-10	4-6	6	13	19	4	7	34	5	3	3	2	2					7	

Shooting By Period		
1st FG%	13-34	38.2%
3PT%	4-10	40.0%
FT%	4-6	66.7%
GM FG%	13-34	38.2%
3PT%	4-10	40.0%
FT%	4-6	66.7%

Dead Ball Rebounds: 0, 0

Technical Fouls::NONE

	GAC	UWP
Biggest lead	2 (1st 8:49)	7 (1st 0:52)
Best Scoring Run	5 (1st 14:59)	7 (1st 6:44)
Lead Changes	4	
Times Tied	6	
Time with Lead	01:18	15:40

Points from	GAC	UWP
Turnovers	3	9
Paint	14	14
Second Chance	5	2
Fast Breaks	0	4
Bench	14	2

	Period by Period Scoring		
	1st	2nd	TOT
GAC	27	35	62
UWP	34	43	77



Period 2

Quarter Starters:

UWP	3 McCann B	4 Shields Q	5 Tuma K	14 Pearson L	30 Stovall J
GAC	2 Lundberg B	4 Malo N	15 Feahn K	22 Biewen A	32 Guse J

Game Time	UWP	Score	Diff	GAC
20:00				3 SCHOMMER J substitution out
20:00				5 WIEKER E substitution out
20:00				4 MALO N substitution in
20:00				15 FEAHN K substitution in
19:35				4 MALO N 2pt FG in the paint, jump shot missed
19:35	4 SHIELDS Q defensive rebound (1)			
19:35	4 SHIELDS Q foul drawn (3)			32 GUSE J foul personal (1 - 1)
19:16	4 SHIELDS Q 3pt FG , jump shot made (11)	37-27	10	
18:55		37-30	7	2 LUNDBERG B 3pt FG , jump shot made (5)
18:37	5 TUMA K turnover lost ball (1)			32 GUSE J steal (1)
18:30				15 FEAHN K 2pt FG from turnover in the paint, layup missed
18:27				32 GUSE J offensive rebound (3)
18:26		37-32	5	32 GUSE J 2pt FG from turnover second chance in the paint, layup made (5)
18:17	4 SHIELDS Q 3pt FG , jump shot made (14)	40-32	8	
18:00	5 TUMA K foul personal (2 - 1)			4 MALO N foul drawn (1)
17:52		40-34	6	32 GUSE J 2pt FG in the paint, layup made (7)
17:32	14 PEARSON L 3pt FG , jump shot missed			
17:27	14 PEARSON L offensive rebound (4)			
17:19	30 STOVALL J 3pt FG second chance, jump shot missed			
17:15	4 SHIELDS Q offensive rebound (2)			
17:08	5 TUMA K 3pt FG second chance, jump shot made (11)	43-34	9	
17:08	4 SHIELDS Q assist (2)			
16:42	4 SHIELDS Q substitution out			
16:42	30 STOVALL J substitution out			
16:42	0 HUML J substitution in			
16:42	40 NIES B substitution in			
16:42				32 GUSE J substitution out
16:42				33 LUNDQUIST P substitution in
16:37				4 MALO N 2pt FG outside the paint, jump shot missed
16:35	5 TUMA K defensive rebound (4)			
16:14	5 TUMA K foul drawn (2)			4 MALO N foul personal (2 - 2)
16:06	14 PEARSON L turnover bad pass (2)			4 MALO N steal (1)
16:02		43-36	7	2 LUNDBERG B 2pt FG fast break from turnover in the paint, layup made (7)
15:44	40 NIES B 2pt FG outside the paint, jump shot made (3)	45-36	9	
15:44	5 TUMA K assist (1)			
15:26	14 PEARSON L foul personal (2 - 2)			15 FEAHN K foul drawn (2)
15:26	Timeout media			
15:26	0 HUML J substitution out			
15:26	5 TUMA K substitution out			
15:26	14 PEARSON L substitution out			
15:26	2 RANNEY A substitution in			
15:26	4 SHIELDS Q substitution in			



Official Basketball Play by Play - Second Half
Gust. Adolphus at Wis.-Platteville
 11/13/21 Williams Fieldhouse, Platteville, Wis.
 UW-Platteville vs. Gust. Adolphus

Game Time: 7:00 PM
Game Duration: 1:24
Attendance: 454

Officials: Peter Juzenas, Tom Turckes, Chris Arneson

Game Time	UWP	Score	Diff	GAC
15:26	12 PROBST B substitution in			
15:26				2 LUNDBERG B substitution out
15:26				4 MALO N substitution out
15:26				3 SCHOMMER J substitution in
15:26				21 SWANSON S substitution in
15:19				21 SWANSON S 2pt FG in the paint, layup blocked
15:19	2 RANNEY A block (1)			
15:16	4 SHIELDS Q defensive rebound (3)			
15:12	3 MCCANN B 2pt FG in the paint, dunk, missed			
15:10	4 SHIELDS Q offensive rebound (4)			
15:09	4 SHIELDS Q 2pt FG second chance in the paint, layup made (16)	47-36	11	
15:03	40 NIES B foul personal (1 - 3)			33 LUNDQUIST P foul drawn (1)
14:55	40 NIES B foul personal (2 - 4)			33 LUNDQUIST P foul drawn (2)
14:48				33 LUNDQUIST P 2pt FG in the paint, layup missed
14:44				33 LUNDQUIST P offensive rebound (4)
14:43	4 SHIELDS Q steal (1)			33 LUNDQUIST P turnover lost ball (2)
14:33	40 NIES B foul drawn (2)			15 FEAHN K foul shooting (3 - 3)
14:33	40 NIES B free throw 1 - 2 made (4)	48-36	12	
14:33	3 MCCANN B substitution out			
14:33	14 PEARSON L substitution in			
14:33				15 FEAHN K substitution out
14:33				5 WIEKER E substitution in
14:33	40 NIES B free throw 2 - 2 made (5)	49-36	13	
14:33	12 PROBST B substitution out			
14:33	40 NIES B substitution out			
14:33	5 TUMA K substitution in			
14:33	30 STOVALL J substitution in			
14:07	30 STOVALL J foul personal (2 - 5)			33 LUNDQUIST P foul drawn (3)
14:02				33 LUNDQUIST P 2pt FG in the paint, layup missed
13:59	14 PEARSON L defensive rebound (5)			
13:47	30 STOVALL J turnover travel (2)			
13:47				22 BIEWEN A substitution out
13:47				2 LUNDBERG B substitution in
13:18				21 SWANSON S 2pt FG from turnover in the paint, layup blocked
13:18	30 STOVALL J block (2)			
13:12	14 PEARSON L defensive rebound (6)			
13:09	5 TUMA K 3pt FG , jump shot missed			
13:07				5 WIEKER E defensive rebound (5)
12:50		49-38	11	33 LUNDQUIST P 2pt FG in the paint, layup made (4)
12:23	4 SHIELDS Q 2pt FG in the paint, driving layup made (18)	51-38	13	
12:13				33 LUNDQUIST P 3pt FG , jump shot missed
12:11	4 SHIELDS Q defensive rebound (5)			
11:52	30 STOVALL J 3pt FG , jump shot missed			
11:47				5 WIEKER E defensive rebound (6)
11:41		51-40	11	2 LUNDBERG B 2pt FG in the paint, jump shot made (9)
11:39				Timeout 60 Sec
11:39	2 RANNEY A substitution out			
11:39	14 PEARSON L substitution out			



Official Basketball Play by Play - Second Half
Gust. Adolphus at Wis.-Platteville
 11/13/21 Williams Fieldhouse, Platteville, Wis.
 UW-Platteville vs. Gust. Adolphus

Game Time: 7:00 PM
Game Duration: 1:24
Attendance: 454

Officials: Peter Juzenas, Tom Turckes, Chris Arneson

Game Time	UWP	Score	Diff	GAC
11:39	3 MCCANN B substitution in			
11:39	12 PROBST B substitution in			
11:39				21 SWANSON S substitution out
11:39				33 LUNDQUIST P substitution out
11:39				4 MALO N substitution in
11:39				32 GUSE J substitution in
11:28	4 SHIELDS Q turnover out of bounds (1)			
10:58				3 SCHOMMER J 3pt FG from turnover, jump shot missed
10:55	5 TUMA K defensive rebound (5)			
10:40	12 PROBST B 3pt FG , jump shot missed			
10:40	offensive rebound (30)			
10:40				3 SCHOMMER J substitution out
10:40				15 FEAHN K substitution in
10:36	12 PROBST B 3pt FG second chance, jump shot missed			
10:34				2 LUNDBERG B defensive rebound (5)
10:26				2 LUNDBERG B 2pt FG outside the paint, jump shot missed
10:24	5 TUMA K defensive rebound (6)			
10:16	4 SHIELDS Q 2pt FG outside the paint, jump shot missed			
10:14				15 FEAHN K defensive rebound (3)
10:08				5 WIEKER E 3pt FG , jump shot missed
10:03				2 LUNDBERG B offensive rebound (6)
10:02		51-42	9	4 MALO N 2pt FG second chance outside the paint, jump shot made (6)
10:02				2 LUNDBERG B assist (2)
09:40	12 PROBST B substitution out			
09:40	14 PEARSON L substitution in			
09:40				5 WIEKER E substitution out
09:40				22 BIEWEN A substitution in
09:34	30 STOVALL J 3pt FG , jump shot missed			
09:32				4 MALO N defensive rebound (1)
09:26				15 FEAHN K turnover bad pass (3)
09:26				2 LUNDBERG B substitution out
09:26				3 SCHOMMER J substitution in
09:09	5 TUMA K turnover lost ball (2)			4 MALO N steal (2)
08:52				3 SCHOMMER J 3pt FG from turnover, jump shot missed
08:49				offensive rebound (31)
08:45	5 TUMA K foul personal (3 - 6)			32 GUSE J foul drawn (3)
08:45	5 TUMA K substitution out			
08:45	2 RANNEY A substitution in			
08:40	2 RANNEY A foul drawn (2)			4 MALO N foul personal (3 - 4)
08:19	14 PEARSON L 3pt FG , jump shot made (10)	54-42	12	
08:19	30 STOVALL J assist (1)			
08:00				15 FEAHN K 3pt FG , jump shot missed
07:57	30 STOVALL J defensive rebound (7)			
07:48	3 MCCANN B 2pt FG in the paint, dunk, missed			
07:43				22 BIEWEN A defensive rebound (3)
07:38	3 MCCANN B steal (2)			32 GUSE J turnover lost ball (2)
07:28	14 PEARSON L 2pt FG from turnover in the paint, dunk, made (12)	56-42	14	
07:28	3 MCCANN B assist (2)			



Game Time	UWP	Score	Diff	GAC
07:11		56-44	12	15 FEAHN K 2pt FG in the paint, jump shot made (4)
06:58	14 PEARSON L foul drawn (2)			4 MALO N foul personal (4 - 5)
06:58				3 SCHOMMER J substitution out
06:58				4 MALO N substitution out
06:58				32 GUSE J substitution out
06:58				2 LUNDBERG B substitution in
06:58				21 SWANSON S substitution in
06:58				33 LUNDQUIST P substitution in
06:55	3 MCCANN B 2pt FG outside the paint, jump shot made (6)	58-44	14	
06:41		58-47	11	15 FEAHN K 3pt FG , jump shot made (7)
06:41				33 LUNDQUIST P assist (3)
06:21	4 SHIELDS Q 2pt FG in the paint, driving layup made (20)	60-47	13	
05:54		60-50	10	33 LUNDQUIST P 3pt FG , jump shot made (7)
05:54				15 FEAHN K assist (1)
05:29	3 MCCANN B 2pt FG outside the paint, jump shot missed			
05:27	14 PEARSON L offensive rebound (7)			
05:27	30 STOVALL J substitution out			
05:27	5 TUMA K substitution in			
05:27	Timeout 30 Sec			
05:12				33 LUNDQUIST P substitution out
05:12				32 GUSE J substitution in
05:12	2 RANNEY A foul drawn (3)			32 GUSE J foul personal (2 - 6)
05:03	4 SHIELDS Q 2pt FG second chance in the paint, driving layup made (22)	62-50	12	
04:52				15 FEAHN K 3pt FG , jump shot missed
04:48	5 TUMA K defensive rebound (7)			
04:24	3 MCCANN B 2pt FG in the paint, layup made (8)	64-50	14	
04:24	3 MCCANN B foul drawn (2)			32 GUSE J foul shooting (3 - 7)
04:24	2 RANNEY A substitution out			
04:24	30 STOVALL J substitution in			
04:24				32 GUSE J substitution out
04:24				33 LUNDQUIST P substitution in
04:24	3 MCCANN B free throw 1 - 1 missed			
04:20	30 STOVALL J offensive rebound (8)			
04:20	30 STOVALL J 2pt FG second chance in the paint, layup blocked			
04:20				33 LUNDQUIST P block (1)
04:20				defensive rebound (33)
04:17				2 LUNDBERG B substitution out
04:17				4 MALO N substitution in
04:17				21 SWANSON S substitution out
04:17				3 SCHOMMER J substitution in
04:02		64-52	12	33 LUNDQUIST P 2pt FG in the paint, layup made (9)
03:45	30 STOVALL J 3pt FG , jump shot made (8)	67-52	15	
03:45	14 PEARSON L assist (1)			
03:32	14 PEARSON L steal (2)			15 FEAHN K turnover lost ball (4)
03:20	3 MCCANN B turnover lost ball (1)			15 FEAHN K steal (1)
03:15				15 FEAHN K 3pt FG from turnover, jump shot missed
03:11	3 MCCANN B defensive rebound (4)			
03:03	30 STOVALL J foul drawn (1)			33 LUNDQUIST P foul personal (2 - 8)



Official Basketball Play by Play - Second Half
Gust. Adolphus at Wis.-Platteville
 11/13/21 Williams Fieldhouse, Platteville, Wis.
 UW-Platteville vs. Gust. Adolphus

Game Time: 7:00 PM
Game Duration: 1:24
Attendance: 454

Officials: Peter Juzenas, Tom Turckes, Chris Arneson

Game Time	UWP	Score	Diff	GAC
03:03	30 STOVALL J 1&1 free throw 1 missed			
03:00				4 MALO N defensive rebound (2)
02:51				3 SCHOMMER J 3pt FG , jump shot missed
02:49	5 TUMA K defensive rebound (8)			
02:38	30 STOVALL J 3pt FG , jump shot made (11)	70-52	18	
02:38	4 SHIELDS Q assist (3)			
02:18				4 MALO N 3pt FG , jump shot missed
02:15				33 LUNDQUIST P offensive rebound (5)
02:15	5 TUMA K foul personal (4 - 7)			33 LUNDQUIST P foul drawn (4)
02:15		70-53	17	33 LUNDQUIST P 1&1 free throw 1 made (10)
02:15				33 LUNDQUIST P 1&1 free throw 2 missed
02:13	5 TUMA K defensive rebound (9)			
01:57	14 PEARSON L foul drawn (3)			4 MALO N foul shooting (5 - 9)
01:57				4 MALO N substitution out
01:57				21 SWANSON S substitution in
01:57	14 PEARSON L free throw 1 - 2 missed			
01:57	offensive dead ball rebound (1)			
01:57	14 PEARSON L free throw 2 - 2 made (13)	71-53	18	
01:57	5 TUMA K substitution out			
01:57	2 RANNEY A substitution in			
01:44		71-55	16	3 SCHOMMER J 2pt FG outside the paint, jump shot made (7)
01:25	30 STOVALL J turnover bad pass (3)			22 BIEWEN A steal (2)
01:19		71-58	13	3 SCHOMMER J 3pt FG fast break from turnover, jump shot made (10)
01:19				22 BIEWEN A assist (1)
01:18				Timeout 60 Sec
01:18	30 STOVALL J substitution out			
01:18	5 TUMA K substitution in			
01:18				33 LUNDQUIST P substitution out
01:18				5 WIEKER E substitution in
01:04	3 MCCANN B 2pt FG in the paint, dunk, made (10)	73-58	15	
01:04	5 TUMA K assist (2)			
00:57	14 PEARSON L foul shooting (3 - 8)			15 FEAHN K foul drawn (3)
00:57		73-59	14	15 FEAHN K free throw fast break 1 - 2 made (8)
00:57		73-60	13	15 FEAHN K free throw fast break 2 - 2 made (9)
00:43	5 TUMA K foul drawn (3)			21 SWANSON S foul personal (2 - 10)
00:43	5 TUMA K free throw 1 - 2 made (12)	74-60	14	
00:43	5 TUMA K free throw 2 - 2 made (13)	75-60	15	
00:43	4 SHIELDS Q substitution out			
00:43	11 NIES B substitution in			
00:43				22 BIEWEN A substitution out
00:43				33 LUNDQUIST P substitution in
00:43	Timeout 30 Sec			
00:43	2 RANNEY A substitution out			
00:43	3 MCCANN B substitution out			
00:43	5 TUMA K substitution out			
00:43	14 PEARSON L substitution out			
00:43	1 JENNY C substitution in			
00:43	24 BENDER C substitution in			



Official Basketball Play by Play - Second Half
Gust. Adolphus at Wis.-Platteville
 11/13/21 Williams Fieldhouse, Platteville, Wis.
 UW-Platteville vs. Gust. Adolphus

Game Time: 7:00 PM
Game Duration: 1:24
Attendance: 454

Officials: Peter Juzenas, Tom Turckes, Chris Arneson

Game Time	UWP	Score	Diff	GAC
00:43	42 BARNES O substitution in			
00:43	44 PASKE C substitution in			
00:33				15 FEAHN K 3pt FG , jump shot missed
00:29				21 SWANSON S offensive rebound (2)
00:29		75-62	13	21 SWANSON S 2pt FG second chance in the paint, layup made (7)
00:28				3 SCHOMMER J substitution out
00:28				5 WIEKER E substitution out
00:28				15 FEAHN K substitution out
00:28				33 LUNDQUIST P substitution out
00:28				1 KIENITZ B substitution in
00:28				10 ZAMMIT J substitution in
00:28				12 SCHETNAN K substitution in
00:28				23 KELLEN D substitution in
00:05	11 NIES B 2pt FG in the paint, jump shot made (2)	77-62	15	
END OF GAME				
UWP 77-62 GAC				



Officials: Peter Juzenas, Tom Turckes, Chris Arneson

Gust. Adolphus - 35

NO.	Name	Min	FG			Rebounds			Fouls		TP	AS	TO	ST	Blocks		+/-
			M-A	M-A	M-A	OR	DR	TOT	PF	FD					BS	BA	
4	Nolan Malo	F 11:35	1-4	0-1	0-0	0	2	2	4	1	2	0	0	2	0	0	-6
15	Kaleb Feahn	F 15:38	2-7	1-5	2-2	0	1	1	1	2	7	1	2	1	0	0	-7
22	Adam Biewen	F 15:09	0-0	0-0	0-0	0	1	1	0	0	0	1	0	1	0	0	-12
32	Jake Guse	C 08:47	2-2	0-0	0-0	1	0	1	3	1	4	0	1	1	0	0	-7
2	Benji Lundberg	G 11:36	3-4	1-1	0-0	1	1	2	0	0	7	1	0	0	0	0	0
33	Peter Lundquist	10:10	3-6	1-2	1-2	2	0	2	1	4	8	1	1	0	1	0	3
3	Jordan Schommer	11:02	2-5	1-4	0-0	0	0	0	0	0	5	0	0	0	0	0	-4
21	Spencer Swanson	08:25	1-3	0-0	0-0	1	0	1	1	0	2	0	0	0	0	2	-2
5	Evan Wieker	05:42	0-1	0-1	0-0	0	2	2	0	0	0	0	0	0	0	0	3
1	Brady Kienitz	00:29	0-0	0-0	0-0	0	0	0	0	0	0	0	0	0	0	0	-2
10	Jack Zammit	00:29	0-0	0-0	0-0	0	0	0	0	0	0	0	0	0	0	0	-2
12	Kip Schetnan	00:29	0-0	0-0	0-0	0	0	0	0	0	0	0	0	0	0	0	-2
23	Dawson Kellen	00:29	0-0	0-0	0-0	0	0	0	0	0	0	0	0	0	0	0	-2
Team						1	1	2			0		0				
Totals			14-32	4-14	3-4	6	8	14	10	8	35	4	4	5	1	2	-8

Shooting By Period		
2 nd FG%	14-32	43.8%
3PT%	4-14	28.6%
FT%	3-4	75%
GM FG%	14-32	43.8%
3PT%	4-14	28.6%
FT%	3-4	75.0%

Dead Ball Rebounds: 0, 0

Technical Fouls::NONE

Wis.-Platteville - 43

NO.	Name	Min	FG			Rebounds			Fouls		TP	AS	TO	ST	Blocks		+/-
			M-A	M-A	M-A	OR	DR	TOT	PF	FD					BS	BA	
5	Kyle Tuma	F 14:26	1-2	1-2	2-2	0	6	6	3	2	5	2	2	0	0	0	8
30	Justin Stovall	F 15:30	2-6	2-5	0-1	1	1	2	1	1	6	1	2	0	1	1	-2
3	Blake McCann	G 16:22	3-6	0-0	0-1	0	1	1	0	1	6	1	1	1	0	0	9
4	Quentin Shields	G 18:00	6-7	2-2	0-0	2	3	5	0	1	14	2	1	1	0	0	8
14	Logan Pearson	G 16:24	2-3	1-2	1-2	2	2	4	2	2	6	1	1	1	0	0	7
0	Jack Huml	01:16	0-0	0-0	0-0	0	0	0	0	0	0	0	0	0	0	0	0
40	Brad Nies	02:09	1-1	0-0	2-2	0	0	0	2	1	4	0	0	0	0	0	4
2	Alex Ranney	09:21	0-0	0-0	0-0	0	0	0	0	2	0	0	0	0	1	0	4
12	Ben Probst	02:52	0-2	0-2	0-0	0	0	0	0	0	0	0	0	0	0	0	2
1	Clayton Jenny	00:44	0-0	0-0	0-0	0	0	0	0	0	0	0	0	0	0	0	0
11	Braden Nies	00:44	1-1	0-0	0-0	0	0	0	0	0	2	0	0	0	0	0	0
24	Charlie Bender	00:44	0-0	0-0	0-0	0	0	0	0	0	0	0	0	0	0	0	0
42	Oliver Barnes	00:44	0-0	0-0	0-0	0	0	0	0	0	0	0	0	0	0	0	0
44	Cam Paske	00:44	0-0	0-0	0-0	0	0	0	0	0	0	0	0	0	0	0	0
Team						1	0	1			0		0				
Totals			16-28	6-13	5-8	6	13	19	8	10	43	7	7	3	2	1	8

Shooting By Period		
2 nd FG%	16-28	57.1%
3PT%	6-13	46.2%
FT%	5-8	62.5%
GM FG%	16-28	57.1%
3PT%	6-13	46.2%
FT%	5-8	62.5%

Dead Ball Rebounds: 1, 0

Technical Fouls::NONE

	GAC	UWP
Biggest lead	0 (1 st 20:00)	18 (2 nd 2:38)
Best Scoring Run	5(2 nd 18:26)	6(2 nd 14:33)
Lead Changes	0	
Times Tied	0	
Time with Lead	00:00	19:35

Points from	GAC	UWP
Turnovers	7	4
Paint	16	16
Second Chance	7	7
Fast Breaks	7	0
Bench	15	6

	Period by Period Scoring		
	1st	2nd	TOT
GAC	27	35	62
UWP	34	43	77



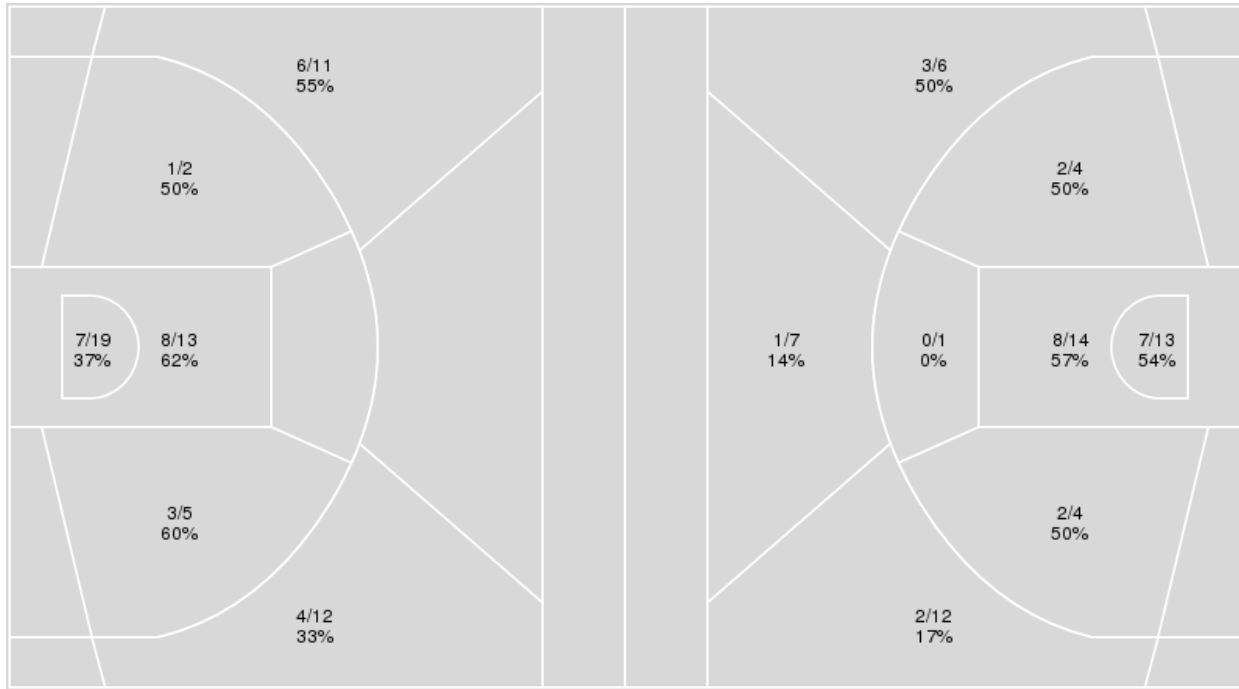
Officials: Peter Juzenas, Tom Turckes, Chris Arneson

{ Players => 0, 1, 2, 3, 4, 5, 11, 12, 14, 20, 21, 24, 30, 32, 34, 40, 42, 44; } FG Types => All; Results => All;

{ Players => All; } FG Types => All; Results => All;

Wis.-Platteville

Gust. Adolphus



Wis.-Platteville	M/A	%
Field Goals	29/62	47
2 Points	19/39	49
3 Points	10/23	43
Free Throws	9/14	64

Gust. Adolphus	M/A	%
Field Goals	25/61	41
2 Points	19/36	53
3 Points	6/25	24
Free Throws	6/8	75



Gust. Adolphus at Wis.-Platteville

11/13/21 Williams Fieldhouse, Platteville, Wis.
UW-Platteville vs. Gust. Adolphus

Game Time: 7:00 PM
Game Duration: 1:24
Attendance: 454

Officials: Peter Juzenas, Tom Turckes, Chris Arneson

Gust. Adolphus

No	Name	Mins		Score		Points Diff		Points per Min		Assists		Rebounds		Steals		Turnovers	
		On	Off	On	Off	On	Off	On	Off	On	Off	On	Off	On	Off	On	Off
1	Brady Kienitz	00:29	39:31	0 - 2	62 - 75	-2	-13	0.00	1.57	0	8	0	36	0	6	0	12
2	Benji Lundberg	25:51	14:09	37 - 50	25 - 27	-13	-2	1.43	1.77	4	4	23	13	2	4	8	4
3	Jordan Schommer	20:20	19:40	35 - 38	27 - 39	-3	-12	1.72	1.37	5	3	19	17	4	2	4	8
4	Nolan Malo	24:19	15:41	29 - 44	33 - 33	-15	0	1.19	2.10	4	4	20	16	5	1	9	3
5	Evan Wieker	18:06	21:54	32 - 28	30 - 49	4	-19	1.77	1.37	5	3	23	13	1	5	3	9
10	Jack Zammit	00:29	39:31	0 - 2	62 - 75	-2	-13	0.00	1.57	0	8	0	36	0	6	0	12
12	Kip Schetnan	00:29	39:31	0 - 2	62 - 75	-2	-13	0.00	1.57	0	8	0	36	0	6	0	12
15	Kaleb Feahn	21:49	18:11	37 - 48	25 - 29	-11	-4	1.70	1.37	5	3	19	17	5	1	8	4
21	Spencer Swanson	13:33	26:27	28 - 30	34 - 47	-2	-13	2.07	1.29	3	5	9	27	1	5	3	9
22	Adam Biewen	31:19	08:41	46 - 65	16 - 12	-19	4	1.47	1.84	5	3	23	13	6	0	12	0
23	Dawson Kellen	00:29	39:31	0 - 2	62 - 75	-2	-13	0.00	1.57	0	8	0	36	0	6	0	12
32	Jake Guse	20:31	19:29	22 - 36	40 - 41	-14	-1	1.07	2.05	3	5	24	12	2	4	8	4
33	Peter Lundquist	22:16	17:44	44 - 38	18 - 39	6	-21	1.98	1.02	6	2	20	16	4	2	5	7

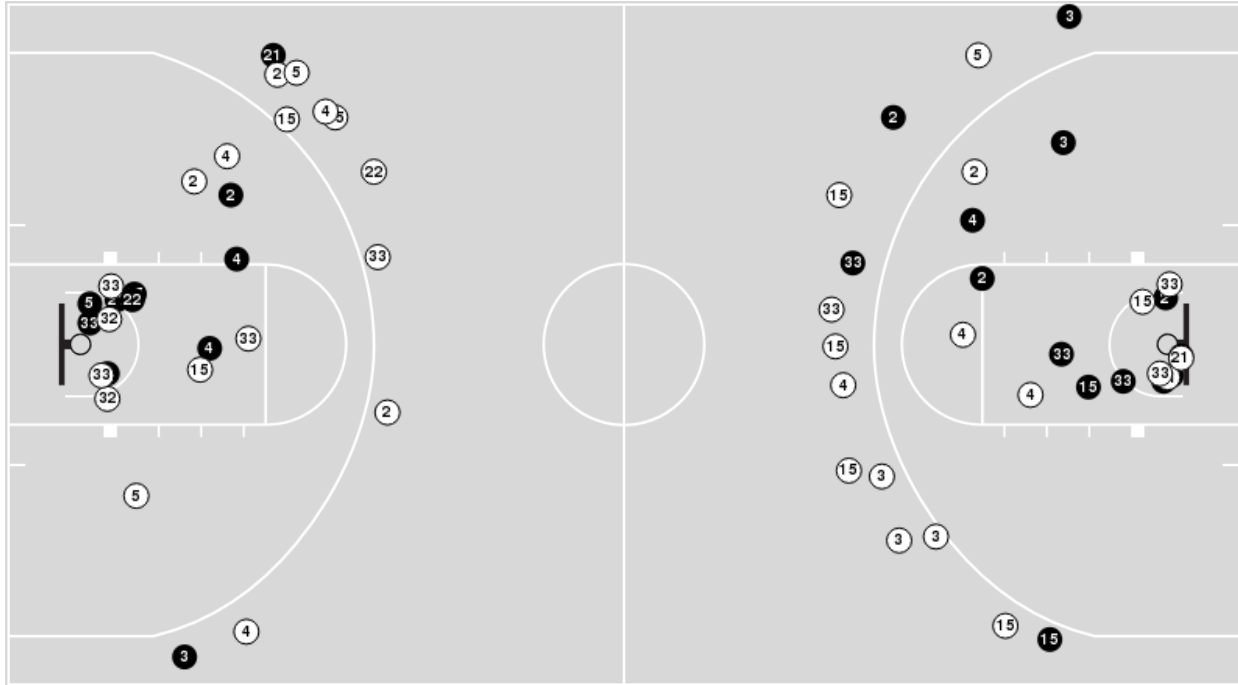
Wis.-Platteville

No	Name	Mins		Score		Points Diff		Points per Min		Assists		Rebounds		Steals		Turnovers	
		On	Off	On	Off	On	Off	On	Off	On	Off	On	Off	On	Off	On	Off
0	Jack Huml	05:28	34:32	6 - 9	71 - 53	-3	18	1.10	2.06	2	10	7	31	1	5	2	8
1	Clayton Jenny	00:44	39:16	2 - 2	75 - 60	0	15	2.73	1.91	0	12	0	38	0	6	0	10
2	Alex Ranney	16:33	23:27	34 - 34	43 - 28	0	15	2.05	1.83	5	7	12	26	3	3	2	8
3	Blake McCann	31:34	08:26	61 - 52	16 - 10	9	6	1.93	1.90	10	2	31	7	5	1	8	2
4	Quentin Shields	33:48	06:12	69 - 51	8 - 11	18	-3	2.04	1.29	10	2	31	7	5	1	8	2
5	Kyle Tuma	30:14	09:46	58 - 39	19 - 23	19	-4	1.92	1.95	9	3	31	7	3	3	9	1
11	Braden Nies	00:44	39:16	2 - 2	75 - 60	0	15	2.73	1.91	0	12	0	38	0	6	0	10
12	Ben Probst	09:13	30:47	16 - 10	61 - 52	6	9	1.74	1.98	2	10	11	27	2	4	2	8
14	Logan Pearson	31:51	08:09	64 - 47	13 - 15	17	-2	2.01	1.60	11	1	30	8	5	1	9	1
24	Charlie Bender	00:44	39:16	2 - 2	75 - 60	0	15	2.73	1.91	0	12	0	38	0	6	0	10
30	Justin Stovall	29:45	10:15	56 - 45	21 - 17	11	4	1.88	2.05	9	3	26	12	4	2	8	2
40	Brad Nies	07:54	32:06	11 - 13	66 - 49	-2	17	1.39	2.06	2	10	11	27	2	4	2	8
42	Oliver Barnes	00:44	39:16	2 - 2	75 - 60	0	15	2.73	1.91	0	12	0	38	0	6	0	10
44	Cam Paske	00:44	39:16	2 - 2	75 - 60	0	15	2.73	1.91	0	12	0	38	0	6	0	10

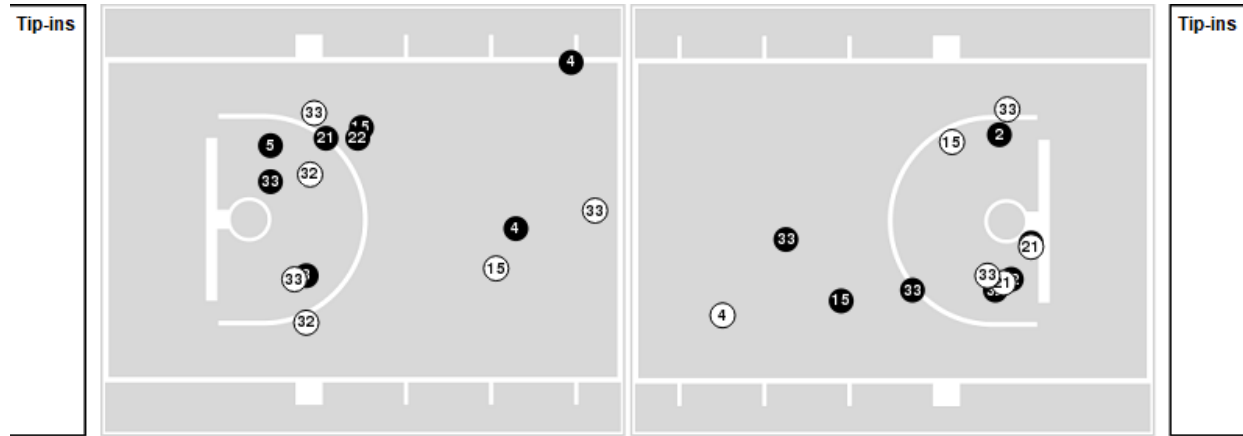


Players => AllFG Types=>AllResults=>All
Gust. Adolphus

All Field Goals



Blow Up Chart



● Made ○ Missed N - Player Number

Gust. Adolphus	M/A	%
Field Goals	25/61	41
2 Points	19/36	53
3 Points	6/25	24
Free Throws	6/8	75

Gust. Adolphus	M/A	%
Points in the Paint	30 (15 / 27)	56
Fast Break Points	7 (4/4)	100
Second Chance Points	12 (7/10)	70
Effective FG%	46	

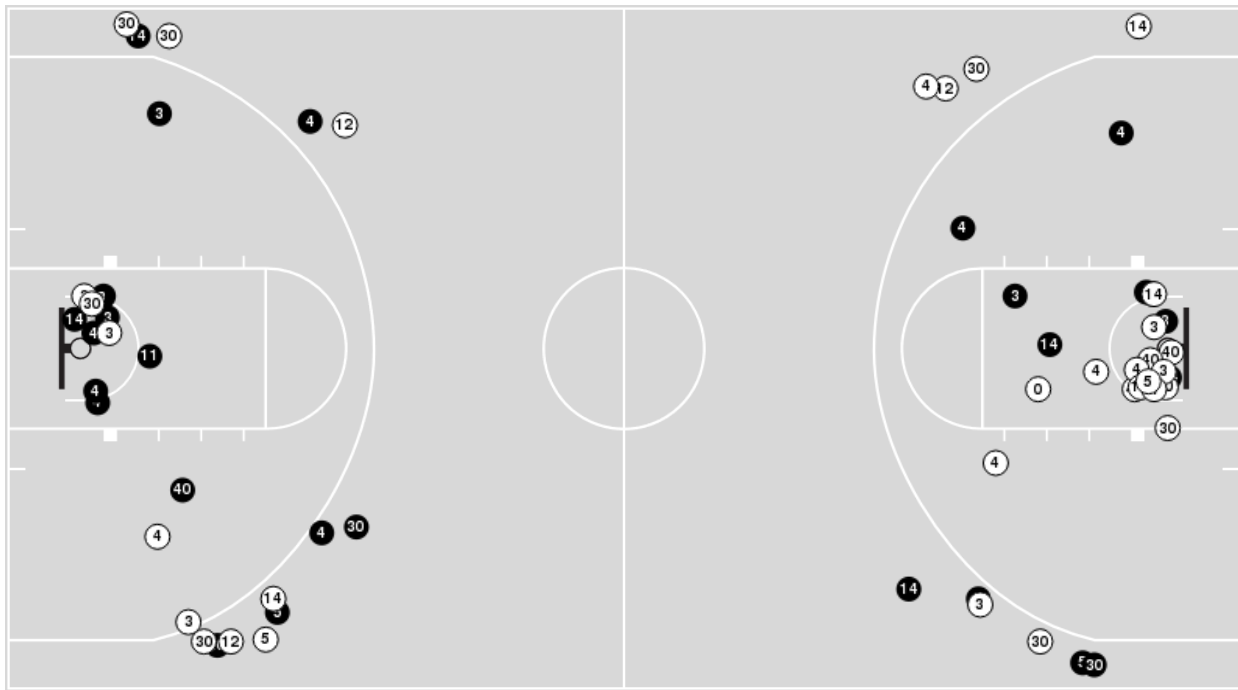


Officials: Peter Juzenas, Tom Turckes, Chris Arneson

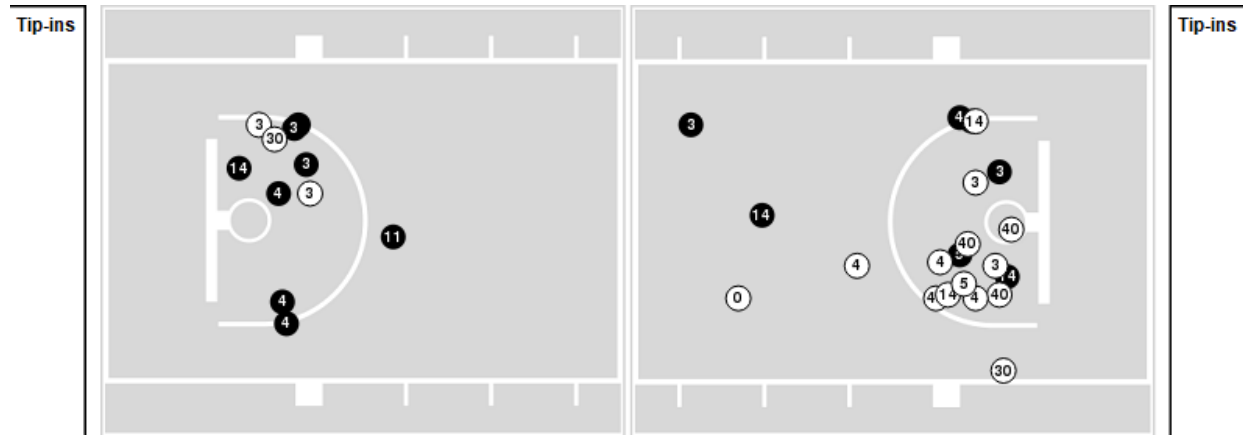
Players => 0, 1, 2, 3, 4, 5, 11, 12, 14, 20, 21, 24, 30, 32, 34, 40, 42, 44 FG Types=>All Results=>All

Wis.-Platteville

All Field Goals



Blow Up Chart



● Made ○ Missed N - Player Number

Wis.-Platteville	M/A	%
Field Goals	29/62	47
2 Points	19/39	49
3 Points	10/23	43
Free Throws	9/14	64

Wis.-Platteville	M/A	%
Points in the Paint	30 (15 / 32)	47
Fast Break Points	4 (3/3)	100
Second Chance Points	9 (4/11)	36
Effective FG%	55	



Gust. Adolphus

Lineup	Quarter On	Time On	Quarter Off	Time Off	Time on Court	Score	Score Diff	Reb	Stl	Tov	Ass	PPP
2- Lundberg B/ 4- Malo N/ 15- Feahn K/ 22- Biewen A/ 32- Guse J/	1	20:00	1	17:20	02:40	0-2	-2	3	0	3	0	0.0000
2- Lundberg B/ 4- Malo N/ 15- Feahn K/ 22- Biewen A/ 33- Lundquist P/	1	17:20	1	16:16	01:04	2-5	-3	0	0	0	0	2.0000
3- Schommer J/ 4- Malo N/ 5- Wieker E/ 22- Biewen A/ 33- Lundquist P/	1	16:16	1	14:12	02:04	5-2	3	1	1	0	2	1.2500
3- Schommer J/ 5- Wieker E/ 15- Feahn K/ 32- Guse J/ 33- Lundquist P/	1	14:12	1	12:39	01:33	4-1	3	4	0	0	1	1.3333
2- Lundberg B/ 4- Malo N/ 15- Feahn K/ 22- Biewen A/ 32- Guse J/	1	12:39	1	11:45	00:54	0-2	-2	0	0	1	0	0.0000
2- Lundberg B/ 4- Malo N/ 5- Wieker E/ 22- Biewen A/ 32- Guse J/	1	11:45	1	10:08	01:37	0-2	-2	2	0	1	0	0.0000
2- Lundberg B/ 5- Wieker E/ 21- Swanson S/ 22- Biewen A/ 33- Lundquist P/	1	10:08	1	07:08	03:00	7-7	0	2	0	1	0	1.4000
3- Schommer J/ 4- Malo N/ 21- Swanson S/ 22- Biewen A/ 33- Lundquist P/	1	07:08	1	05:00	02:08	2-2	0	2	0	1	0	0.6667
2- Lundberg B/ 3- Schommer J/ 4- Malo N/ 5- Wieker E/ 32- Guse J/	1	05:00	1	02:43	02:17	4-7	-3	3	0	0	1	1.1628
2- Lundberg B/ 5- Wieker E/ 22- Biewen A/ 32- Guse J/ 33- Lundquist P/	1	02:43	1	01:16	01:27	1-0	1	4	0	1	0	0.4098
2- Lundberg B/ 3- Schommer J/ 22- Biewen A/ 32- Guse J/ 33- Lundquist P/	1	01:16	1	00:25	00:50	1-2	-1	0	0	0	0	0.6944
2- Lundberg B/ 3- Schommer J/ 5- Wieker E/ 22- Biewen A/ 32- Guse J/	1	00:25	2	20:00	00:26	1-2	-1	1	0	0	0	2.2727
2- Lundberg B/ 4- Malo N/ 15- Feahn K/ 22- Biewen A/ 32- Guse J/	2	20:00	2	16:42	03:18	7-9	-2	1	1	0	0	1.7500
2- Lundberg B/ 4- Malo N/ 15- Feahn K/ 22- Biewen A/ 33- Lundquist P/	2	16:42	2	15:26	01:16	2-2	0	0	1	0	0	1.0000
3- Schommer J/ 15- Feahn K/ 21- Swanson S/ 22- Biewen A/ 33- Lundquist P/	2	15:26	2	14:33	00:53	0-3	-3	1	0	1	0	0.0000
3- Schommer J/ 5- Wieker E/ 21- Swanson S/ 22- Biewen A/ 33- Lundquist P/	2	14:33	2	13:47	00:46	0-1	-1	0	0	0	0	0.0000
2- Lundberg B/ 3- Schommer J/ 5- Wieker E/ 21- Swanson S/ 33- Lundquist P/	2	13:47	2	11:39	02:08	4-2	2	2	0	0	0	1.0000
2- Lundberg B/ 3- Schommer J/ 4- Malo N/ 5- Wieker E/ 32- Guse J/	2	11:39	2	10:40	00:59	0-0	0	0	0	0	0	0.0000
2- Lundberg B/ 4- Malo N/ 5- Wieker E/ 15- Feahn K/ 32- Guse J/	2	10:40	2	09:40	01:00	2-0	2	3	0	0	1	1.0000
2- Lundberg B/ 4- Malo N/ 15- Feahn K/ 22- Biewen A/ 32- Guse J/	2	09:40	2	09:26	00:14	0-0	0	1	0	1	0	0.0000
3- Schommer J/ 4- Malo N/ 15- Feahn K/ 22- Biewen A/ 32- Guse J/	2	09:26	2	06:58	02:28	2-5	-3	2	1	1	0	0.6667
2- Lundberg B/ 15- Feahn K/ 21- Swanson S/ 22- Biewen A/ 33- Lundquist P/	2	06:58	2	05:12	01:46	6-4	2	0	0	0	2	3.0000
2- Lundberg B/ 15- Feahn K/ 21- Swanson S/ 22- Biewen A/ 32- Guse J/	2	05:12	2	04:24	00:48	0-4	-4	0	0	0	0	0.0000
2- Lundberg B/ 15- Feahn K/ 21- Swanson S/ 22- Biewen A/ 33- Lundquist P/	2	04:24	2	04:17	00:07	0-0	0	1	0	0	0	0.0000
4- Malo N/ 15- Feahn K/ 21- Swanson S/ 22- Biewen A/ 33- Lundquist P/	2	04:17	2	04:17	00:00	0-0	0	0	0	0	0	0.0000
3- Schommer J/ 4- Malo N/ 15- Feahn K/ 22- Biewen A/ 33- Lundquist P/	2	04:17	2	01:57	02:20	3-6	-3	2	1	1	0	0.6148
3- Schommer J/ 15- Feahn K/ 21- Swanson S/ 22- Biewen A/ 33- Lundquist P/	2	01:57	2	01:18	00:39	5-1	4	0	1	0	1	2.5000
3- Schommer J/ 5- Wieker E/ 15- Feahn K/ 21- Swanson S/ 22- Biewen A/	2	01:18	2	00:43	00:34	2-4	-2	0	0	0	0	2.2727
3- Schommer J/ 5- Wieker E/ 15- Feahn K/ 21- Swanson S/ 33- Lundquist P/	2	00:43	2	00:28	00:15	2-0	2	1	0	0	0	2.0000
1- Kienitz B/ 10- Zammit J/ 12- Schetnan K/ 21- Swanson S/ 23- Kellen D/	2	00:28	2	00:00	00:29	0-2	-2	0	0	0	0	0.0000



Official Basketball Rotations Summary - Final
Gust. Adolphus at Wis.-Platteville
 11/13/21 Williams Fieldhouse, Platteville, Wis.
 UW-Platteville vs. Gust. Adolphus

Game Time: 7:00 PM
Game Duration: 1:24
Attendance: 454

Officials: Peter Juzenas, Tom Turckes, Chris Arneson

Wis.-Platteville

Lineup	Quarter On	Time On	Quarter Off	Time Off	Time on Court	Score	Score Diff	Reb	Stl	Tov	Ass	PPP
3- McCann B/ 4- Shields Q/ 5- Tuma K/ 14- Pearson L/ 30- Stovall J/	1	20:00	1	16:16	03:44	7-2	5	3	1	1	1	1.0000
0- Huml J/ 3- McCann B/ 5- Tuma K/ 14- Pearson L/ 40- Nies B/	1	16:16	1	14:12	02:04	2-5	-3	5	0	1	0	0.6667
2- Ranney A/ 3- McCann B/ 4- Shields Q/ 12- Probst B/ 40- Nies B/	1	14:12	1	12:39	01:33	1-4	-3	2	0	0	0	0.3472
4- Shields Q/ 5- Tuma K/ 12- Probst B/ 14- Pearson L/ 30- Stovall J/	1	12:39	1	10:08	02:31	4-0	4	3	1	1	0	0.8197
2- Ranney A/ 3- McCann B/ 4- Shields Q/ 5- Tuma K/ 30- Stovall J/	1	10:08	1	07:08	03:00	7-7	0	1	0	0	1	1.7500
0- Huml J/ 2- Ranney A/ 3- McCann B/ 14- Pearson L/ 40- Nies B/	1	07:08	1	05:00	02:08	2-2	0	1	1	0	1	0.6667
2- Ranney A/ 4- Shields Q/ 12- Probst B/ 14- Pearson L/ 30- Stovall J/	1	05:00	1	04:29	00:31	1-2	-1	0	0	0	0	0.5319
4- Shields Q/ 5- Tuma K/ 12- Probst B/ 14- Pearson L/ 30- Stovall J/	1	04:29	1	02:43	01:46	6-2	4	1	0	0	2	3.0000
3- McCann B/ 4- Shields Q/ 5- Tuma K/ 14- Pearson L/ 30- Stovall J/	1	02:43	2	16:42	06:01	13-10	3	6	0	1	1	1.4444
0- Huml J/ 3- McCann B/ 5- Tuma K/ 14- Pearson L/ 40- Nies B/	2	16:42	2	15:26	01:16	2-2	0	1	0	1	1	1.0000
2- Ranney A/ 3- McCann B/ 4- Shields Q/ 12- Probst B/ 40- Nies B/	2	15:26	2	14:33	00:53	3-0	3	2	1	0	0	2.0833
2- Ranney A/ 4- Shields Q/ 12- Probst B/ 14- Pearson L/ 40- Nies B/	2	14:33	2	14:33	00:00	1-0	1	0	0	0	0	2.2727
2- Ranney A/ 4- Shields Q/ 5- Tuma K/ 14- Pearson L/ 30- Stovall J/	2	14:33	2	11:39	02:54	2-4	-2	3	0	1	0	0.5000
3- McCann B/ 4- Shields Q/ 5- Tuma K/ 12- Probst B/ 30- Stovall J/	2	11:39	2	09:40	01:59	0-2	-2	3	0	1	0	0.0000
3- McCann B/ 4- Shields Q/ 5- Tuma K/ 14- Pearson L/ 30- Stovall J/	2	09:40	2	08:45	00:55	0-0	0	0	0	1	0	0.0000
2- Ranney A/ 3- McCann B/ 4- Shields Q/ 14- Pearson L/ 30- Stovall J/	2	08:45	2	05:27	03:18	9-8	1	2	1	0	2	1.8000
2- Ranney A/ 3- McCann B/ 4- Shields Q/ 5- Tuma K/ 14- Pearson L/	2	05:27	2	04:24	01:03	4-0	4	1	0	0	0	2.0000
3- McCann B/ 4- Shields Q/ 5- Tuma K/ 14- Pearson L/ 30- Stovall J/	2	04:24	2	01:57	02:27	7-3	4	4	1	1	2	1.4706
2- Ranney A/ 3- McCann B/ 4- Shields Q/ 14- Pearson L/ 30- Stovall J/	2	01:57	2	01:18	00:39	0-5	-5	0	0	1	0	0.0000
2- Ranney A/ 3- McCann B/ 4- Shields Q/ 5- Tuma K/ 14- Pearson L/	2	01:18	2	00:43	00:34	4-2	2	0	0	0	1	2.1277
2- Ranney A/ 3- McCann B/ 5- Tuma K/ 11- Nies B/ 14- Pearson L/	2	00:43	2	00:43	00:00	0-0	0	0	0	0	0	0.0000
1- Jenny C/ 11- Nies B/ 24- Bender C/ 42- Barnes O/ 44- Paske C/	2	00:43	2	00:00	00:44	2-2	0	0	0	0	0	2.0000



Official Basketball Line Up Analysis - Final
Gust. Adolphus at Wis.-Platteville
 11/13/21 Williams Fieldhouse, Platteville, Wis.
 UW-Platteville vs. Gust. Adolphus

Game Time: 7:00 PM
Game Duration: 1:24
Attendance: 454

Officials: Peter Juzenas, Tom Turckes, Chris Arneson

Gust. Adolphus

Lineup	Time	Score	Score Diff	Pts/Min	Reb	Stl	Tov	Ass	PPP
2- Lundberg B/ 4- Malo N/ 15- Feahn K/ 22- Biewen A/ 32- Guse J/	07:06	7-13	-6	0.9859	5	1	5	0	0.5833
2- Lundberg B/ 3- Schommer J/ 4- Malo N/ 5- Wieker E/ 32- Guse J/	03:16	4-7	-3	1.2245	3	0	0	1	0.9009
2- Lundberg B/ 5- Wieker E/ 21- Swanson S/ 22- Biewen A/ 33- Lundquist P/	03:00	7-7	0	2.3333	2	0	1	0	1.4000
3- Schommer J/ 4- Malo N/ 15- Feahn K/ 22- Biewen A/ 32- Guse J/	02:28	2-5	-3	0.8108	2	1	1	0	0.6667
2- Lundberg B/ 4- Malo N/ 15- Feahn K/ 22- Biewen A/ 33- Lundquist P/	02:20	4-7	-3	1.7143	0	1	0	0	1.3333
3- Schommer J/ 4- Malo N/ 15- Feahn K/ 22- Biewen A/ 33- Lundquist P/	02:20	3-6	-3	1.2857	2	1	1	0	0.6148
3- Schommer J/ 4- Malo N/ 21- Swanson S/ 22- Biewen A/ 33- Lundquist P/	02:08	2-2	0	0.9375	2	0	1	0	0.6667
2- Lundberg B/ 3- Schommer J/ 5- Wieker E/ 21- Swanson S/ 33- Lundquist P/	02:08	4-2	2	1.8750	2	0	0	0	1.0000
3- Schommer J/ 4- Malo N/ 5- Wieker E/ 22- Biewen A/ 33- Lundquist P/	02:04	5-2	3	2.4194	1	1	0	2	1.2500
2- Lundberg B/ 15- Feahn K/ 21- Swanson S/ 22- Biewen A/ 33- Lundquist P/	01:53	6-4	2	3.1858	1	0	0	2	3.0000
2- Lundberg B/ 4- Malo N/ 5- Wieker E/ 22- Biewen A/ 32- Guse J/	01:37	0-2	-2	0.0000	2	0	1	0	0.0000
3- Schommer J/ 5- Wieker E/ 15- Feahn K/ 32- Guse J/ 33- Lundquist P/	01:33	4-1	3	2.5806	4	0	0	1	1.3333
3- Schommer J/ 15- Feahn K/ 21- Swanson S/ 22- Biewen A/ 33- Lundquist P/	01:32	5-4	1	3.2609	1	1	1	1	1.2500
2- Lundberg B/ 5- Wieker E/ 22- Biewen A/ 32- Guse J/ 33- Lundquist P/	01:27	1-0	1	0.6897	4	0	1	0	0.4098
2- Lundberg B/ 4- Malo N/ 5- Wieker E/ 15- Feahn K/ 32- Guse J/	01:00	2-0	2	2.0000	3	0	0	1	1.0000
2- Lundberg B/ 3- Schommer J/ 22- Biewen A/ 32- Guse J/ 33- Lundquist P/	00:50	1-2	-1	1.2000	0	0	0	0	0.6944
2- Lundberg B/ 15- Feahn K/ 21- Swanson S/ 22- Biewen A/ 32- Guse J/	00:48	0-4	-4	0.0000	0	0	0	0	0.0000
3- Schommer J/ 5- Wieker E/ 21- Swanson S/ 22- Biewen A/ 33- Lundquist P/	00:46	0-1	-1	0.0000	0	0	0	0	0.0000
3- Schommer J/ 5- Wieker E/ 15- Feahn K/ 21- Swanson S/ 22- Biewen A/	00:34	2-4	-2	3.5294	0	0	0	0	2.2727
1- Kienitz B/ 10- Zammit J/ 12- Schetnan K/ 21- Swanson S/ 23- Kellen D/	00:29	0-2	-2	0.0000	0	0	0	0	0.0000
2- Lundberg B/ 3- Schommer J/ 5- Wieker E/ 22- Biewen A/ 32- Guse J/	00:26	1-2	-1	2.3077	1	0	0	0	2.2727
3- Schommer J/ 5- Wieker E/ 15- Feahn K/ 21- Swanson S/ 33- Lundquist P/	00:15	2-0	2	8.0000	1	0	0	0	2.0000
4- Malo N/ 15- Feahn K/ 21- Swanson S/ 22- Biewen A/ 33- Lundquist P/	00:00	0-0	0	NaN	0	0	0	0	0.0000



Official Basketball Line Up Analysis - Final
Gust. Adolphus at Wis.-Platteville
 11/13/21 Williams Fieldhouse, Platteville, Wis.
 UW-Platteville vs. Gust. Adolphus

Game Time: 7:00 PM
Game Duration: 1:24
Attendance: 454

Officials: Peter Juzenas, Tom Turckes, Chris Arneson

Wis.-Platteville

Lineup	Time	Score	Score Diff	Pts/Min	Reb	Stl	Tov	Ass	PPP
3- McCann B/ 4- Shields Q/ 5- Tuma K/ 14- Pearson L/ 30- Stovall J/	13:07	27-15	12	2.0584	13	2	4	4	1.1863
4- Shields Q/ 5- Tuma K/ 12- Probst B/ 14- Pearson L/ 30- Stovall J/	04:17	10-2	8	2.3346	4	1	1	2	1.4535
2- Ranney A/ 3- McCann B/ 4- Shields Q/ 14- Pearson L/ 30- Stovall J/	03:57	9-13	-4	2.2785	2	1	1	2	1.5000
0- Huml J/ 3- McCann B/ 5- Tuma K/ 14- Pearson L/ 40- Nies B/	03:20	4-7	-3	1.2000	6	0	2	1	0.8000
2- Ranney A/ 3- McCann B/ 4- Shields Q/ 5- Tuma K/ 30- Stovall J/	03:00	7-7	0	2.3333	1	0	0	1	1.7500
2- Ranney A/ 4- Shields Q/ 5- Tuma K/ 14- Pearson L/ 30- Stovall J/	02:54	2-4	-2	0.6897	3	0	1	0	0.5000
2- Ranney A/ 3- McCann B/ 4- Shields Q/ 12- Probst B/ 40- Nies B/	02:26	4-4	0	1.6438	4	1	0	0	0.9259
0- Huml J/ 2- Ranney A/ 3- McCann B/ 14- Pearson L/ 40- Nies B/	02:08	2-2	0	0.9375	1	1	0	1	0.6667
3- McCann B/ 4- Shields Q/ 5- Tuma K/ 12- Probst B/ 30- Stovall J/	01:59	0-2	-2	0.0000	3	0	1	0	0.0000
2- Ranney A/ 3- McCann B/ 4- Shields Q/ 5- Tuma K/ 14- Pearson L/	01:37	8-2	6	4.9485	1	0	0	1	2.0619
1- Jenny C/ 11- Nies B/ 24- Bender C/ 42- Barnes O/ 44- Paske C/	00:44	2-2	0	2.7273	0	0	0	0	2.0000
2- Ranney A/ 4- Shields Q/ 12- Probst B/ 14- Pearson L/ 30- Stovall J/	00:31	1-2	-1	1.9355	0	0	0	0	0.5319
2- Ranney A/ 4- Shields Q/ 12- Probst B/ 14- Pearson L/ 40- Nies B/	00:00	1-0	1	∞	0	0	0	0	2.2727
2- Ranney A/ 3- McCann B/ 5- Tuma K/ 11- Nies B/ 14- Pearson L/	00:00	0-0	0	NaN	0	0	0	0	0.0000