



# GUSTAVUS ADOLPHUS

gustavus.edu/athletics/wbb  
@GustieAthletics  
@GustavusWBB

## GUSTAVUS WOMEN'S BASKETBALL GAME NOTES

## GUSTAVUS SPORTS INFORMATION

GUSTIES

2-0  
OVERALL

0-0  
MIAC



-VS-

0-3  
OVERALL

0-0  
MIAC

SCOTS

Laurie Kelly  
HEAD COACH

132-61  
RECORD AT GAC, 8th SEASON

Katie Kollar  
HEAD COACH

0-3  
RECORD AT MAC, 1st SEASON

## 2019-20 SCHEDULE

DATE	OPPONENT	TIME/RESULT
NOVEMBER		
16	LUTHER	W 84-53
19	Martin Luther	W 94-26
23	MACALESTER*	3 p.m.
26	CONCORDIA*	7:15 p.m.
29	Pomono-Pitzer	6:30 p.m.
30	Claremont-Mudd-Scripps	6:30 p.m.

DECEMBER		
4	Hamline*	7 p.m.
7	St. Thomas*	3 p.m.
11	Saint Benedict*	7 p.m.
30	UW-RIVER FALLS	7 p.m.

JANUARY		
4	ST. OLAF*	3 p.m.
8	SAINT MARY'S*	7 p.m.
11	Bethel*	3 p.m.
15	Concordia*	7:30 p.m.
18	AUGSBURG*	3 p.m.
22	HAMLIN*	7 p.m.
25	Macalester*	3 p.m.
29	SAINT BENEDICT*	7 p.m.

FEBRUARY		
1	ST. THOMAS*	3 p.m.
5	CARLETON*	7 p.m.
8	St. Olaf*	3 p.m.
12	St. Catherine*	7 p.m.
15	BETHEL*	3 p.m.
19	Saint Mary's*	7 p.m.
22	Augsburg*	3 p.m.

HOME GAMES IN BOLD CAPS  
\* DENOTES MIAC CONTEST

## HOW THEY COMPARE (MIAC Ranks)

GUSTAVUS	- VS -	MACALESTER
89.0 (2nd)	SCORING	66.3 (10th)
.523 (1st)	FG%	36.8 (10th)
.381 (4th)	3FG%	21.5 (12th)
37.5 (6th)	REBOUNDS	37.3 (7th)
19.0 (1st)	ASSISTS	9.3 (10th)
3.0 (4th)	BLOCKS	4.0 (1st)
18.0 (2nd)	STEALS	7.0 (10th)
39.5 (1st)	SCORING DEFENSE	83.3 (12th)
27.0 (1st)	FG% DEFENSE	45.8 (12th)
13.9 (1st)	3FG% DEFENSE	49.0 (12th)
10.5 (2nd)	REBOUND MARGIN	-6.7 (12th)
17.0 (7th)	TURNOVERS	18.7 (9th)
18.5 (5th)	PERS. FOULS	21.7 (11th)

## GUSTAVUS vs. MACALESTER

GAME	MINNESOTA INTERCOLLEGIATE ATHLETIC CONF.
3	Saint Peter, Minn. Gus Young Court Saturday, Nov. 23, 2019 3 p.m.

## LIVE COVERAGE

LIVE STATS/ONLINE VIDEO: <https://portal.stretchinternet.com/gac/>  
RADIO: AM 860 KNUJ, New Ulm, Minn.  
PLAY-BY-PLAY: Tom Wheeler

## SERIES AT A GLANCE

OVERALL	Gustavus leads 64-12 (77th meeting)
Current Streak	Gustavus 9
Last Meeting	1/6/19 (GAC 74-65)
Last MAC Win	1/6/14 (57-55)

MEDIA CONTACT  
ASSISTANT SPORTS INFORMATION DIRECTOR: WALKER FROEHLING  
WFROEHLING@GUSTAVUS.EDU  
OFFICE: (507) 933-7647 | CELL: (507) 380-5518

## 2018-19 MIAC STANDINGS

School	MIAC	Overall
Augsburg	0-0	3-0
Bethel	0-0	3-0
Carleton	0-0	2-2
Concordia	0-0	1-2
Gustavus	0-0	2-0
Hamline	0-0	3-0
Macalester	0-0	0-3
Saint Benedict	0-0	4-0
Saint Mary's	0-0	0-2
St. Catherine	0-0	2-1
St. Olaf	0-0	3-2
St. Thomas	0-0	3-0

## PROJECTED STARTERS

11 GABBY BOWLIN JR • GUARD • 5-9	21 MARISA GUSTAFSON JR • GUARD • 5-9	22 AVA GONSOROWSKI SO • GUARD • 5-5	33 CAITLIN RORMAN FY • FORWARD • 5-11	34 PAIGE RICHERT JR • FORWARD • 6-0
MIN 20.0	MIN 15.5	MIN 21.0	MIN 26.5	MIN 23.0
PPG 6.0	PPG 10.0	PPG 8.5	PPG 14.5	PPG 6.5
FG% 38.5	FG% .800	FG% 37.5	FG% 72.2	FG% 42.9
REB 3.0	REB 1.0	REB 4.5	REB 7.0	REB 6.0
AST 2.0	AST 0.5	AST 3.5	AST 3.5	AST 2.5

RADIO / BROADCAST ROSTER



**1** **MADDIE WAGNER**  
JR • G • 5-7  
New Richland, Minn.



**2** **MARNIE WAGNER**  
JR • G • 5-7  
New Richland, Minn.



**3** **BRIANNA POLESKY**  
SO • G • 5-9  
Sleepy Eye, Minn.



**4** **RACHEL SKYBERG**  
JR • G • 5-5  
Pipestone, Minn.



**5** **JACEY WELP**  
FY • G • 5-6  
Saint Peter, Minn.



**10** **HAILEY SORENSON**  
JR • F • 5-10  
Buffalo, Minn.



**11** **GABBY BOWLIN**  
JR • G • 5-9  
Winona, Minn.



**12** **ABBY GOODNO**  
SO • G • 5-8  
St. Paul, Minn.



**20** **HALEY BENDA**  
SO • F • 5-9  
Becker, Minn.



**21** **MARISA GUSTAFSON**  
JR • G • 5-9  
Mahtomedi, Minn.



**22** **AVA GONSOROWSKI**  
JR • G • 5-5  
Esko, Minn.



**25** **MADDY RICE**  
FY • G • 5-9  
Forest Lake, Minn.



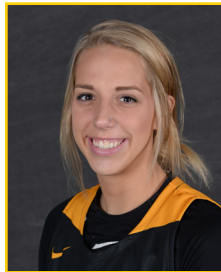
**31** **LOGAN MAHONEY**  
FY • F • 6-0  
Minneapolis, Minn.



**32** **SIENNA WIEBUSCH**  
SO • F • 5-11  
Saint Peter, Minn.



**33** **CAITLIN RORMAN**  
FY • F • 5-11  
Blue Earth, Minn.



**34** **PAIGE RICHERT**  
JR • F • 6-0  
Comfrey, Minn.



**35** **ANNA SANDERS**  
FY • G • 5-9  
Vadnais Heights, Minn.



**43** **BETSY SCHOENROCK**  
SO • P • 6-5  
New Richland, Minn.



**44** **MEGAN METTLER**  
SO • F • 6-0  
Mankato, Minn.



**45** **ALISON HINCK**  
JR • G • 5-8  
Vadnais Heights, Minn.

COACHING STAFF



**LAURIE KELLY**  
Head Coach  
Eighth Season



**DAN WOLFE**  
Associate Head Coach  
12th Season



**KELSEY LETOURNEAU**  
Assistant Coach  
Second Season

PRONUNCIATION GUIDE

11	Gabby Bowlin	BOH-lin
22	Ava Gonsorowski	Gone-Sa-RAH-ski
34	Paige Richert	RICK-ert
45	Alison Hinck	HINK

# 2019-20 GUSTAVUS WOMEN'S BASKETBALL GAME NOTES

## SETTING THE SCENE

The Gustavus women's basketball team will open its MIAC slate Saturday when they host Macalester for a 3 p.m. contest. The Gusties enter 2-0 overall while the Scots are 0-3.

## LAST TIME OUT

The Gustavus women's basketball team traveled to New Ulm Tuesday and took down Martin Luther 94-26. With the win the Gusties move to 2-0 while the Knights fall to 0-5.

"It's always a good opportunity when we have to go on the road and play in someone else's gym," said Head Coach Laurie Kelly. "We played really well defensively tonight and it was nice to be able to play some different lineups and see a balanced stat sheet. In the first quarter we were able to set the tone defensively and it was nice to get some transition baskets."

The Gusties jumped out to a quick 8-0 in the first quarter but the Knights would rally and close the gap at 10-7. After a Gustavus timeout, the visitors would rebound, scoring 10 straight while holding Martin Luther scoreless for the last 3:56 to take a 20-7 advantage after the first quarter.

The Black and Gold carried their momentum from the first quarter into the second, where they were in sync from start to finish. They outscored the Knights 27-4 in the quarter, shooting 12-of-19 from the field in the frame, to go into the half up 47-11.

The offensive output of the Gusties continued into the second half. In the third frame, they put up a 30 points, while limiting Martin Luther to just 10, to head into the final quarter up 77-18. Gustavus kept building on their lead in the fourth, outscoring the Knights 17-8 for the 94-26 victory.

Caitlin Rorman (Fy., Blue Earth) led all scorers with 14 points on 7-of-8 shooting while Marisa Gustafson (Jr., Mahtomedi) had 11 points including 3-of-3 shooting from three point range. Marnie Wagner (Jr., New Richland) and Ava Gonsorowski (Jr., Esko) each added nine points for the Gusties, with Wagner grabbing a game-high eight rebounds and four steals. As a team the Gusties shot 36-of-63 (57.1 percent) in the game, the highest percentage in a game for Gustavus since Jan. 14, 2017.

## LAST TIME THEY MET

The Gustavus women's basketball team got back in the win column Wednesday night, defeating Macalester 74-65, improving to 8-8 overall and 5-4 in the MIAC. After watching their lead late in the game dwindle down to one point, the Gusties were able to stop the Macalester rally to preserve the victory.

"We were in the same situation at St. Kate's and didn't make free throws and stops when we needed them, but we did the opposite tonight," Head Coach Laurie Kelly said. "It's fun to see us continue to play hard and compete while making advances in our game. Macalester is a good team at home and they shoot the ball well, so any road win in this league feels great when you step on the bus to go home."

Kendall Thompson (Sr., Eden Prairie, Minn.) was key for the Gusties, scoring a career-high 25 points on 8-of-19 shooting, including 7-of-8 from the free throw line. Thompson was one rebound shy of a double-double, while adding four steals, three assists, and two blocks.

Macalester started the game with the hot hand, jumping out to a 14-5 lead in the first five minutes. The Gusties responded with a 12-3 lead to end the first quarter tied at 17. The Scots regained the lead to begin the second quarter, but once again the Gusties answered with an 11-5 run to close out the half and went into the break up 37-36.

Gustavus never relinquished the lead and was ahead by as much as nine points (51-42) midway through the third quarter, but the Scots battled back into the game and trailed by one (66-65) with 2:46 left in the contest. The Gusties were able to fend off the home team's rally with eight unanswered points to end the game.

Ava Gonsorowski (So., Esko, Minn.) joined Thompson with a career-high of her own, totaling 13 points. The Gusties forced 18 turnovers and tallied 11 steals. Rebounds were even at 42 apiece.

## SCOUTING THE GUSTIES

Gustavus is most recently coming off a 94-26 win over Martin Luther Saturday. After two contests, the Gusties have nine players averaging at least 6.0 points per contest with Caitlin Rorman and Marisa Gustafson leading the bunch with 14.5 and 10.0, respectively. Rorman also leads the team with 14 total rebounds and seven assists. The Gusties have shot it well thus far, going 68-for-130 (52.3 percent) from the field and 16-of-42 (38.1 percent) from beyond the arc.

## SCOUTING THE SCOTS

Macalester is most recently coming off a 79-68 OT loss to Northwestern (Minn.) on Tuesday. Through three contests Justine Barraza and Celine Sabbagh lead the Scots averaging 17.7 and 16.7 points, respectively. Katie Sowerby has been solid all-around for Macalester, posting 11.7 points, 8.3 rebounds, and 4.3 assists per contest.

## 2019-20 SEASON BY THE NUMBERS

### Largest Victory

68; 94-26 @ Martin Luther (11/19/19)

### Largest Defeat

None

### Largest Halftime Lead

36; 47-11 @ Martin Luther (11/19/19)

### Largest Halftime Deficit

None

### Most Points In Game

94; @ Martin Luther (11/19/19)

### Fewest Points In Game

84; vs. Luther (11/16/19)

### Most Points Allowed In Game

53; vs. Luther (11/16/19)

### Fewest Points Allowed In Game

26; @ Martin Luther (11/19/19)

### Highest FG % In Game

57.1%; @ Martin Luther (11/19/19)

### Lowest FG % In Game

47.8%; @ Martin Luther (11/19/19)

### Highest Opp. FG% In Game

34.4%; @ Martin Luther (11/19/19)

### Lowest Opp. FG% In Game

17.6%; @ Martin Luther (11/19/19)

### Most Points In First Half

47; @ Martin Luther (11/19/19)

### Most Points In Second Half

47; @ Martin Luther (11/19/19)

### Fewest Points In First Half

40; vs. Luther (11/16/19)

### Fewest Points In Second Half

44; vs. Luther (11/16/19)

### Most Points Allowed In First Half

18; vs. Luther (11/16/19)

### Most Points Allowed In Second Half

35; vs. Luther (11/16/19)

### Fewest Points Allowed In First Half

11; @ Martin Luther (11/19/19)

### Fewest Points Allowed In Second Half

15; @ Martin Luther (11/19/19)

### Highest FG% In A Half

59.4%; 2nd vs. Luther (11/16/19)

### Lowest FG% In A Half

37.1%; 1st vs. Luther (11/16/19)

### Largest Lead

68; vs. Martin Luther (11/19/19)

### Largest Lead On Road

68; vs. Martin Luther (11/19/19)

### Largest Lead At Home

31; vs. Luther (11/16/19)

### Largest Blown Lead - Loss

None

### Largest Deficit

None

### Largest Deficit On Road

None

### Largest Deficit At Home

None

### Largest Comeback (trail in 2nd half)

None

# HEAD COACH LAURIE KELLY



Laurie Kelly is in her eighth season as the head coach of the Gustavus women's basketball team in 2019-20. Kelly, a 1993 graduate of the University of St. Thomas with a degree in speech communications, came to Gustavus from Northern Arizona University in Flagstaff, where she directed the Division I Lumberjacks for nine seasons.

In 2017-18, Kelly led Gustavus to one of the best seasons in program history, reaching the round of 16 in the NCAA tournament for the first time. The Gusties went 14-4 in the MIAC for third place, reached the conference playoff championship game for the second consecutive season, and finished with a 24-7 overall record. Following Kelly's second season at Gustavus in 2012-13, the Gusties achieved a significant milestone when the Women's Basketball Coaches Association (WBCA) announced its Academic Top 25 Team Honor Roll following the year. Making their 15th appearance on the NCAA Division III honor roll, the Gusties were recognized as the team with the top cumulative grade point average in the country at a 3.600 – a first in the program's history.

A Rochester, Minnesota native, Kelly made a quick ascent through the Division II and I coaching ranks after a record setting Division III playing career at the University of St. Thomas in the early '90s. In nine years at Northern Arizona, she compiled the most wins in the program's history (117), while also directing the team to its first-ever Big Sky Conference tournament title and NCAA tournament bid in the 2005-06 season. During Kelly's tenure, the Lumberjacks advanced to the Big Sky tournament six times with two appearances in the championship game (2006, 2007), and her teams registered two of the three 20-win seasons in the program's history.

In addition to quality on the floor, her squads were also strong in the classroom, with four players earning CoSIDA Academic All-District honors including one Academic All-American. The Lumberjacks were recognized in the Women's Basketball Coaches Association Top 25 Academic Honor Roll six times, with two Top Ten national rankings.

Prior to her position at Northern Arizona, Kelly coached at Binghamton University in New York and built the Bearcats into one of the top Division II programs in the country before helping the

institution transition to a Division I program in 2001-02. In that first year of Division I competition, Kelly directed the team to a 19-9 record and a second-place finish in the America East Conference. During her five years at Binghamton, Kelly compiled a record of 94-22, including a mark of 75-13 in the program's final three years at the Division II level, and her squads won New England Collegiate Conference (NECC) titles in 1999 and 2000 and Eastern Collegiate Athletic Conference (ECAC) titles in 2000 and 2001. She was named ECAC Coach of the Year in 2000 and New York State Coach of the Year in 2002. Kelly started her collegiate coaching career as the graduate assistant coach at Minnesota State University, Mankato from 1996 to 1998. While she was at Minnesota State, Mankato she earned a master's degree in physical education with an emphasis in sports administration.

Before her success in the coaching ranks, Laurie Trow Kelly was a standout player at the University of St. Thomas from 1989 to 1993 and is recognized by many as one of the greatest players in NCAA Division III history. A gifted athlete, the 6-1 Kelly scored 2,607 points and pulled down 1,204 rebounds in four years, earning Kodak All-America honors three consecutive seasons. In her senior season (1992-93), Kelly was voted National Player of the Year by the Women's Basketball Coaches Association after averaging more than 26 points per game. She set 22 conference and 24 school records, was conference MVP three times and was also named Midwest Sports Channel NCAA Division III Women's Athlete of the Year. In January of 2006, Kelly was one of five players selected to the NCAA Division III 25th Anniversary Team.

Laurie Kelly is the ninth head coach in the history of the Gustavus women's basketball program. In addition to her coaching duties, Kelly serves as the coordinator of the Gustavus Health Promotion program (GHP). The Gustavus Health Promotion program offers employees at Gustavus a variety of educational opportunities, assessment tools, and physical activity experiences so that they can achieve and maintain a healthy lifestyle.

Kelly lives in St. Peter with and her husband, Matt, and their two daughters, Morgan and Madison.

## Gustavus Under Head Coach Laurie Kelly

Year	Overall	MIAC	Conf. Finish
2012-13	15-11	14-8	5th
2013-14	14-12	11-11	6th
2014-15	17-9	11-7	T-3rd
2015-16	20-7	14-4	2nd
2016-17	25-3	17-1	2nd
2017-18	24-7	14-4	3rd
2018-19	15-12	11-7	5th
2019-20	2-0	0-0	
<b>Totals</b>	<b>132-61</b>	<b>92-42</b>	

## COACH KELLY BEFORE GUSTAVUS

SEASON	RECORD	INSTITUTION
1998-99	26-4	Binghamton University
1999-00	27-2	Binghamton University
2000-01	22-7	Binghamton University
2001-02	19-9	Binghamton University
2002-03	3-8	Binghamton University
2003-04	12-16	Northern Arizona University
2004-05	19-10	Northern Arizona University
2005-06	22-11	Northern Arizona University
2006-07	20-12	Northern Arizona University
2007-08	10-20	Northern Arizona University
2008-09	9-21	Northern Arizona University
2009-10	5-24	Northern Arizona University
2010-11	11-18	Northern Arizona University
2011-12	9-20	Northern Arizona University

**Collegiate Coaching Record Entering 2019-20 Season:**  
344-243

# 2019-20 OVERALL STATS

## 2019-20 Golden Gustie Basketball Gust. Adolphus Combined Team Statistics (as of Nov 22, 2019) All games

Overall record: 2-0 Conf: 0-0 Home: 1-0 Away: 1-0 Neutral: 0-0

#	Player	gp-gs	min	avg	Total		3-Point		F-Throw		Rebounds				pf	dq	a	to	blk	stl	pts	avg		
					fg-fga	fg%	3fg-fga	3fg%	ft-fa	ft%	off	def	tot	avg										
33	Caitlin Rorman	2-2	53	26.5	13-18	.722	0-0	.000	3-4	.750	7	7	14	7.0	3	0	7	3	0	6	29	14.5		
21	Marisa Gustafson	2-2	31	15.5	8-10	.800	4-5	.800	0-0	.000	0	2	2	1.0	5	0	1	2	0	1	20	10.0		
22	Ava Gonsorowski	2-2	42	21.0	6-16	.375	1-4	.250	4-5	.800	2	7	9	4.5	2	0	7	7	0	4	17	8.5		
25	Maddy Rice	2-0	19	9.5	7-13	.538	2-7	.286	0-0	.000	1	2	3	1.5	1	0	0	1	0	3	16	8.0		
35	Anna Sanders	2-0	40	20.0	4-8	.500	2-4	.500	6-6	1.000	1	2	3	1.5	1	0	2	4	0	1	16	8.0		
01	Maddie Wagner	2-0	22	11.0	4-13	.308	2-6	.333	4-5	.800	1	1	2	1.0	2	0	3	1	1	3	14	7.0		
34	Paige Richert	2-2	46	23.0	6-14	.429	0-0	.000	1-2	.500	4	8	12	6.0	5	0	5	6	3	5	13	6.5		
45	Alison Hinck	1-0	15	15.0	2-4	.500	1-3	.333	1-2	.500	0	0	0	0.0	0	0	2	1	0	0	6	6.0		
11	Gabby Bowlin	2-2	40	20.0	5-13	.385	2-6	.333	0-0	.000	2	4	6	3.0	4	0	4	2	1	6	12	6.0		
02	Marnie Wagner	2-0	22	11.0	5-8	.625	0-1	.000	1-7	.143	1	8	9	4.5	2	0	2	1	0	5	11	5.5		
12	Abby Goodno	1-0	9	9.0	2-4	.500	1-3	.333	0-0	.000	1	1	2	2.0	2	0	0	0	0	0	5	5.0		
10	Hailey Sorenson	2-0	21	10.5	3-5	.600	1-2	.500	2-4	.500	2	2	4	2.0	3	0	1	0	0	0	9	4.5		
04	Rachel Skyberg	1-0	10	10.0	1-1	1.000	0-0	.000	2-2	1.000	2	0	2	2.0	1	0	2	0	0	1	4	4.0		
31	Logan Mahoney	1-0	16	16.0	2-2	1.000	0-0	.000	0-3	.000	1	5	6	6.0	2	0	0	1	0	0	4	4.0		
05	Jacey Welp	1-0	10	10.0	0-1	.000	0-1	.000	2-2	1.000	0	0	0	0.0	1	0	1	2	0	0	2	2.0		
20	Haley Benda	1-0	4	4.0	0-0	.000	0-0	.000	0-0	.000	0	0	0	0.0	3	0	1	1	1	1	0	0.0		
Team											0	1	1											
Total.....		2	400	68-130		.523	16-42	.381	26-42	.619	25	50	75	37.5	37	0	38	34	6	36	178	89.0		
Opponents.....		2	400	31-115		.270	5-36	.139	12-28	.429	20	34	54	27.0	38	-	16	60	5	12	79	39.5		

### TEAM STATISTICS

	GACW	OPP
SCORING	178	79
Points per game	89.0	39.5
Scoring margin	+49.5	-
FIELD GOALS-ATT	68-130	31-115
Field goal pct	.523	.270
3 POINT FG-ATT	16-42	5-36
3-point FG pct	.381	.139
3-pt FG made per game	8.0	2.5
FREE THROWS-ATT	26-42	12-28
Free throw pct	.619	.429
F-Throws made per game	13.0	6.0
REBOUNDS	75	54
Rebounds per game	37.5	27.0
Rebounding margin	+10.5	-
ASSISTS	38	16
Assists per game	19.0	8.0
TURNOVERS	34	60
Turnovers per game	17.0	30.0
Turnover margin	+13.0	-
Assist/turnover ratio	1.1	0.3
STEALS	36	12
Steals per game	18.0	6.0
BLOCKS	6	5
Blocks per game	3.0	2.5
ATTENDANCE	382	145
Home games-Avg/Game	1-382	1-145
Neutral site-Avg/Game	-	0-0

Date	Opponent	Score	Att.
11/16/19	LUTHER	84-53	382
11/19/19	at Martin Luther	94-26	145

\* - Conference game

Score by Periods	1st	2nd	3rd	4th	Totals
Gust. Adolphus	35	52	47	44	178
Opponents	17	12	30	20	79

# 2019-20 GAME-BY-GAME BOX SCORES

## GAME 1

Official Basketball Box Score -- Game Totals -- Final Statistics  
**Luther vs Gust. Adolphus**  
 11/16/19 3:00 pm at

**Luther 53 • 0-3,0-0 American**

#	Player	Total			3-Ptr			Rebounds			PF	TP	A	TO	Blk	Stl	Min
		FG-FGA	FG-FGA	FT-FTA	FG-FGA	FG-FGA	FT-FTA	Off	De	Tot							
21	Laura Hamilton	f	7-13	0-2	1-1	3	3	6	1	15	5	3	1	1	36		
30	Madison Spence	f	2-4	0-0	1-2	0	2	2	2	5	0	3	3	0	24		
45	Madilyn Heinke	f	0-3	0-0	0-0	0	3	3	4	0	3	3	0	1	15		
03	Coranda Vickerman	g	1-5	1-4	0-0	0	1	1	2	3	0	2	0	1	19		
11	Sarah Holtz	g	4-9	1-2	1-3	0	0	0	2	10	0	2	0	0	27		
05	Jenna Uphoff	g	1-7	1-5	0-0	0	2	2	1	3	0	1	0	0	19		
13	Riley Carlson	g	0-5	0-2	0-0	1	1	2	2	0	1	1	0	0	14		
14	Grace Prokosch	g	4-7	0-2	3-6	2	6	8	2	11	0	4	1	1	23		
15	Megan LaPlante	g	0-0	0-0	0-0	0	0	0	0	0	0	0	0	0	1		
22	Kaci Jo Ames	g	3-6	0-2	0-1	3	1	4	1	6	2	1	0	0	13		
33	Kristen Elliott	g	0-3	0-3	0-0	0	0	0	0	0	0	2	0	0	5		
34	Lizzie Kauls	g	0-2	0-1	0-0	1	0	1	0	0	0	0	0	0	4		
Team						0	0	0	0	0	0	0	0	0	4		
Totals			22-64	3-23	6-13	10	19	29	17	53	11	22	5	4	200		
1st - FG %:		4-14	28.6%	2nd: 3-16	18.8%	3rd: 9-17	52.9%	4th: 6-17	35.3%	Game: 22-64	34.4%	Deadball					
3FG %:		1-7	14.3%	1-8	12.5%	1-5	20.0%	0-3	0.0%	3-23	13.0%	Rebounds					
FT %:		1-2	50.0%	1-4	25.0%	4-5	80.0%	0-2	0.0%	6-13	46.2%	8,2					

**Gust. Adolphus 84 • 1-0,0-0 MIAC**

#	Player	Total			3-Ptr			Rebounds			PF	TP	A	TO	Blk	Stl	Min
		FG-FGA	FG-FGA	FT-FTA	FG-FGA	FG-FGA	FT-FTA	Off	De	Tot							
33	Caitlin Rorman	f	6-10	0-0	3-3	6	4	10	3	15	7	2	0	4	34		
34	Paige Richert	f	3-10	0-0	1-2	2	5	7	4	7	3	3	0	1	28		
11	Gabby Bowlin	g	3-7	2-3	0-0	1	1	2	3	8	0	0	0	2	23		
21	Marisa Gustafson	g	4-6	1-2	0-0	0	0	0	3	9	1	2	0	0	18		
22	Ava Gonsorowski	g	3-9	0-2	2-3	2	6	8	1	8	4	6	0	1	27		
01	Maddie Wagner	g	2-6	1-2	1-1	0	1	1	1	6	0	0	0	1	8		
02	Marnie Wagner	g	1-3	0-0	0-0	0	1	1	0	2	1	1	0	1	7		
10	Hailey Sorenson	g	1-2	0-0	2-4	0	2	2	3	4	1	0	0	0	11		
25	Maddy Rice	g	4-5	1-2	0-0	0	0	0	0	9	0	0	0	1	6		
35	Anna Sanders	g	3-5	2-3	2-2	1	1	2	0	10	1	1	0	0	23		
45	Alison Hinck	g	2-4	1-3	1-2	0	0	0	0	6	2	1	0	0	15		
Team						0	1	1	0	2	0	0	0	0	20		
Totals			32-67	8-17	12-17	12	22	34	18	84	20	18	0	11	200		
1st - FG %:		5-16	31.3%	2nd: 8-19	42.1%	3rd: 8-16	50.0%	4th: 11-16	68.8%	Game: 32-67	47.8%	Deadball					
3FG %:		0-1	0.0%	2-7	28.6%	1-4	25.0%	5-5	100.0%	8-17	47.1%	Rebounds					
FT %:		5-7	71.4%	7-9	77.8%	0-1	0.0%	0-0	0.0%	12-17	70.6%	7,9					

Officials: Marshall Behrens,Tristan Severson,Eric Rain  
 Technical fouls: Luther-None. Gust. Adolphus-None.  
 Attendance: 382  
 2019-20 Women's Basketball. Round: 0. Gust. Adolphus vs Luther. Played at Gus

Score by periods	1st	2nd	3rd	4th	Total
Luther	10	8	23	12	53
Gust. Adolphus	15	25	17	27	84

## GAME 2

Official Basketball Box Score -- Game Totals -- Final Statistics  
**Gust. Adolphus vs Martin Luther**  
 11/19/19 7:00 pm at

**Gust. Adolphus 94 • 2-0,0-0 MIAC**

#	Player	Total			3-Ptr			Rebounds			PF	TP	A	TO	Blk	Stl	Min
		FG-FGA	FG-FGA	FT-FTA	FG-FGA	FG-FGA	FT-FTA	Off	De	Tot							
33	Caitlin Rorman	f	7-8	0-0	0-1	1	3	4	0	14	0	1	0	2	19		
34	Paige Richert	f	3-4	0-0	0-0	2	3	5	1	6	2	3	3	4	18		
11	Gabby Bowlin	g	2-6	0-3	0-0	1	3	4	1	4	4	2	1	4	17		
21	Marisa Gustafson	g	4-4	3-3	0-0	0	2	2	2	11	0	0	0	1	13		
22	Ava Gonsorowski	g	3-7	1-2	2-2	0	1	1	1	9	3	1	0	3	15		
01	Maddie Wagner	g	2-7	1-4	3-4	1	0	1	1	8	3	1	1	2	14		
02	Marnie Wagner	g	4-5	0-1	1-7	1	7	8	2	9	1	0	0	4	15		
04	Rachel Skyberg	g	1-1	0-0	2-2	2	0	2	1	4	2	0	0	1	10		
05	Jacey Welp	g	0-1	0-1	2-2	0	0	0	0	1	2	2	0	0	10		
10	Hailey Sorenson	g	2-3	1-2	0-0	2	0	2	0	5	0	0	0	0	10		
12	Abby Goodno	g	2-4	1-3	0-0	1	1	2	2	5	0	0	0	0	9		
20	Hailey Benda	g	0-0	0-0	0-0	0	0	0	0	3	0	1	1	1	4		
25	Maddy Rice	g	3-8	1-5	0-0	1	2	3	1	7	0	1	0	2	13		
31	Logan Mahoney	g	2-2	0-0	0-3	1	5	6	2	4	0	1	0	0	16		
35	Anna Sanders	g	1-3	0-1	4-4	0	1	1	1	6	1	3	0	1	17		
Team						0	0	0	0	0	0	0	0	0	0		
Totals			36-63	8-25	14-25	13	28	41	19	94	18	16	6	25	200		
1st - FG %:		9-17	52.9%	2nd: 12-19	63.2%	3rd: 10-16	62.5%	4th: 5-11	45.5%	Game: 36-63	57.1%	Deadball					
3FG %:		2-7	28.6%	3-8	37.5%	1-3	33.3%	2-7	28.6%	8-25	32.0%	Rebounds					
FT %:		0-0	0.0%	0-3	0.0%	9-12	75.0%	5-10	50.0%	14-25	56.0%	5,4					

**Martin Luther 26 • 0-5,0-0 UMAC**

#	Player	Total			3-Ptr			Rebounds			PF	TP	A	TO	Blk	Stl	Min
		FG-FGA	FG-FGA	FT-FTA	FG-FGA	FG-FGA	FT-FTA	Off	De	Tot							
11	Emily Witkowski	f	3-12	0-2	0-2	1	1	2	2	6	0	6	0	2	22		
21	Samantha Paul	f	0-1	0-0	0-0	0	2	2	0	0	0	1	0	0	12		
32	Kati Aguilar	f	0-1	0-0	0-2	0	1	1	2	0	0	7	0	0	22		
02	Ally Platzer	g	1-7	0-3	3-3	0	1	1	2	5	1	5	0	2	23		
40	Kortney Behnke	g	0-7	0-1	1-2	3	3	6	3	1	2	4	0	1	24		
04	Hailey Engelbrecht	g	1-6	1-4	0-0	0	1	1	3	3	1	0	0	1	14		
10	Erika Gosch	g	1-4	1-3	0-0	0	1	1	2	3	0	4	0	1	15		
12	Nicole Porter	g	0-0	0-0	0-0	0	0	0	0	0	0	1	0	0	1		
20	Allison Semenek	g	0-0	0-0	0-2	0	1	1	3	0	0	2	0	0	9		
24	Grace Sievert	g	0-0	0-0	0-0	0	1	1	0	0	0	1	0	0	4		
30	Cassandra Rose	g	1-4	0-0	1-2	3	1	4	2	3	0	2	0	1	17		
34	Maddy Mielke	g	1-2	0-0	1-1	0	0	0	0	3	0	0	0	0	9		
42	Jayden Koehler	g	1-3	0-0	0-1	1	0	1	1	2	0	2	0	0	8		
44	Emily Rothfuss	g	0-4	0-0	0-0	2	2	4	1	0	1	3	0	0	20		
Team						0	0	0	0	0	0	0	0	0	0		
Totals			9-51	2-13	6-15	10	15	25	21	26	5	38	0	8	200		
1st - FG %:		3-12	25.0%	2nd: 0-14	0.0%	3rd: 3-11	27.3%	4th: 3-14	21.4%	Game: 9-51	17.6%	Deadball					
3FG %:		1-5	20.0%	0-4	0.0%	1-3	33.3%	0-1	0.0%	2-13	15.4%	Rebounds					
FT %:		0-2	0.0%	4-8	50.0%	0-0	0.0%	2-5	40.0%	6-15	40.0%	9,5					

Officials: Marshall Behrens,Tristan Severson,Eric Rain  
 Technical fouls: Gust. Adolphus-TEAM. Martin Luther-None.  
 Attendance: 145  
 2019-20 Women's Basketball. Round: 0. Gust. Adolphus vs Martin Luther. Played at Gus

Score by periods	1st	2nd	3rd	4th	Total
Gust. Adolphus	20	27	30	17	94
Martin Luther	7	4	7	8	26