



## 2016-17 Gustavus Adolphus College Women's Hockey Game Notes

### Gustavus Sports Information

800 W College Ave, St. Peter, MN 56082  
 gustavus.edu/athletics  
 (507) 933-7647 • sportsinfo@gustavus.edu

Women's Hockey Media Contact  
 Trent Jackson, Asst. Sports Information Director  
 (507) 933-8411 • tjackson2@gustavus.edu

### Follow Gustavus Athletics Online

Twitter  
 @GustieAthletics

Facebook  
 facebook.com/GustieAthletics

Snap Chat  
 Username: Gusties

Flickr  
 flickr.com/photos/gogusties

YouTube  
 youtube.com/gustavusathletics

Instagram  
 @gustieathletics



### Gustavus Adolphus College

Golden Gusties  
 (8-5-2 Overall, 4-2-2 MIAC)

vs.

### St. Olaf College

Oles  
 (4-10 Overall, 3-5 MIAC)

## ST. OLAF



#### Game 16

**Date:** Friday, January 20 • **Time:** 7:30 p.m. **Location:** Northfield, Minn.

**Arena:** Northfield Ice Arena

**Live Video:** <https://portal.stretchinternet.com/stolaf/>

#### Game 17

**Date:** Saturday, January 21 • **Time:** 2:00 p.m. **Location:** St. Peter, Minn.

**Arena:** Don Roberts Ice Rink

**Live Stats:** <https://gustavus.edu/athletics/whky/LIVE/xlive.htm>

### 2016-17 SCHEDULE

DATE	OPPONENT	TIME/RESULT
<b>NOVEMBER</b>		
5	UW-Eau Claire	W 3-1
8	<b>UW-STEVENS POINT</b>	L 2-3
11	University of St. Thomas	T 2-2 (OT)
12	<b>UNIVERSITY OF ST. THOMAS</b>	L 2-3
18	<b>AUGSBURG COLLEGE</b>	W 1-0
19	Augsburg College	L 0-1
22	<b>UW-SUPERIOR</b>	W 1-0
29	<b>UW-EAU CLAIRE</b>	W 3-2
<b>DECEMBER</b>		
2	<b>COLLEGE OF SAINT BENEDICT</b>	W 3-1
3	College of Saint Benedict	W 3-2
7	UW-River Falls	L 0-3
10	<b>UW-RIVER FALLS</b>	L 1-4
<b>JANUARY</b>		
7	<b>ST. NORBERT</b>	W 1-0
13	<b>ST. CATHERINE UNIVERSITY</b>	T 3-3 (OT)
14	St. Catherine University	W 3-2
20	St. Olaf College	7:30 P.M.
21	<b>ST. OLAF COLLEGE</b>	2 P.M.
27	<b>CONCORDIA COLLEGE</b>	7 P.M.
28	<b>CONCORDIA COLLEGE</b>	2 P.M.
<b>FEBRUARY</b>		
3	<b>SAINT MARY'S UNIVERSITY</b>	7 P.M.
4	Saint Mary's University	2 P.M.
12	<b>BETHEL UNIVERSITY</b>	7 P.M.
13	Bethel University	2 P.M.
17	<b>HAMLIN UNIVERSITY</b>	7 p.m.
18	Hamline University	2 P.M.

HOME GAMES IN BOLD AND CAPS

**Last Time Out:** Last weekend, Gustavus tied and won in a series with St. Catherine University. Friday night at Don Roberts Ice Rink, the Gusties and Wildcats skated to a 3-3 draw followed by a 3-2 Gustavus win Saturday afternoon in St. Paul.

**Series Snapshot:** Friday's game marks the 40th all-time meeting between the Gustavus and St. Olaf women's hockey programs with the Gusties owning a 34-2-3 record over the Oles. Over the last five seasons, Gustavus holds a 9-1-1 record against St. Olaf. Last season, the Gusties earned three wins over the Oles.

**About the Oles:** St. Olaf most recently lost against the University of Wisconsin-River Falls Wednesday by a score of 4-1, falling to 4-10 overall on the season. A week ago, the Oles earned a series sweep versus the College of Saint Benedict, winning 4-3 and 1-0. Junior forward Jane Vezina leads St. Olaf with seven points from four goals and three assists. Senior netminder Cassie Alexander is the leader in goal, ranking among the top-five goaltenders in the MIAC with a 2.23 goals against average.

**400 Milestone:** On December 3rd at the College of Saint Benedict, a 3-2 win marked the 400th all-time victory in Gustavus women's hockey program history. The Gusties are the fastest team in the MIAC to reach the 400 mark.

**Gustavus Embarks On 20th Season Of Women's Hockey:** The Gustavus women's hockey team is currently in its 20th season. Founded in 1997, the Gusties have attained an all-time record of 394-113-32, which stands as the second winningest program in all of NCAA Division III women's hockey. The Gustie women have won 13 MIAC titles in the 19 years of women's hockey in the conference. Those 13 titles rank first in front of St. Thomas (4), Augsburg and Saint Mary's, who each have two. Gustavus has also earned the MIAC Playoff crown a total of 11 times, 10 of which have come in the past 12 years and led to 11 NCAA Tournament appearances.

**13 MIAC Championships • 11 NCAA Tournament Appearances**

## The Match Up Statistical Comparison

Gustavus		St. Olaf
1.87 (9th)	Goals / Game	1.50 (10th)
1.78 (2nd)	Goals Allowed / Game	2.93 (8th)
22.2% (2nd)	Power Play PCT	11.3% (9th)
82.4% (4th)	Penalty Kill PCT	78.7% (7th)
108 (9th)	Penalty Minutes	132 (5th)

2016-17 season averages with MIAC ranks (10 teams)

## The Series Gustavus vs. St. Olaf

### Coach Mike Carroll

Overall Record at Gustavus vs. St. Olaf 367-99-34 33-2-3

All-Time Record 34-2-3

Last Meeting W 5-0

Current Streak W3

Last Five Seasons 9-1-1

Date	Location	Result
Jan. 23, 2016	Northfield	W 5-0
Jan. 22, 2016	St. Peter	W 4-3
Nov. 6, 2015	St. Peter	W 4-1
Dec. 6, 2014	St. Peter	T 1-1 (OT)
Dec. 5, 2014	Northfield	W 7-2
Dec. 7, 2013	Northfield	W 2-0
Dec. 6, 2013	St. Peter	W 5-2
Feb. 16, 2013	St. Peter	W 6-2
Feb. 15, 2013	Northfield	W 7-4
Feb. 18, 2012	Northfield	L 2-5
Feb. 17, 2012	St. Peter	W 5-0

**Wearing The "C":** In the 19-year history of the Gustavus women's hockey program, 39 players have earned the honor of being a captain. This year, Diana Draayer and Allie Lewis return to earn that title and they add Erica Power.

**Home Grown Talent:** Of the 26 players on this year's roster, 22 are natives of Minnesota. The only players who reside outside the State of Hockey are Courtney Bethune, who hails from Fort Frances, Ontario, Allie Lewis, who is a native of Kearney, Nebraska, Amanda DiNella from Oakbrook Terrace, Illinois, and Tegan Rodriguez, a native of Sioux City, Iowa.

**Scorers Return:** Despite losing its top scorer from its 2015-16 squad, Gustavus will return 72 percent of its scoring from last season, including its second leading scorer in two-time All-Conference honoree Erica Power. Katy Fuller and Diana Draayer also return, having combined for 12 goals and 25 points.

### Gustavus Notables:

- Gustavus scored two power play goals in each game of the St. Catherine series last weekend, in which the Gusties tied 3-3 and won 3-2. The Gusties have scored power play tallies in their last three games, going 5-11. They rank second in the MIAC with a 22.2 power play percentage.
- Gustavus registered 46 shots on goal in both games of the St. Catherine series.
- Kaitlyn Klein (Jr., Plymouth, Minn.) continues to lead the Gustie offense as she scored her team-leading seventh goal at St. Catherine.
- Erica Power (Jr., Lakeville, Minn.) tallied four points in the the St. Catherine series with a goal and three assists.
- Erin Moes (So., Hastings, Minn.) notched her first goal of the season vs. St. Catherine.



### Gustavus Quick Facts

Location:	St. Peter, Minnesota
Address:	800 West College Ave. St. Peter, MN 56082
Founded:	1862
Enrollment:	2,456
Nickname:	Golden Gusties
School Colors:	Black and Gold
Home Ice:	Don Roberts Ice Rink
NCAA Affiliation:	NCAA Division III
Conference:	Minnesota Intercollegiate Athletic
President:	Rebecca M. Bergman
Athletic Director:	Tom Brown
Assistant Athletic Director:	Jared Phillips
Athletic Trainer:	Troy Banse
Equipment Manager:	Jed Friedrich
Sports Information Director:	CJ Siewert
Asst. Sports Information Director:	Trent Jackson

### Gustavus Hockey Quick Facts

2015-16 Record:	9-11-5
2015-16 MIAC Record/Finish:	8-6-4 / 6th
All-Time Record:	394-113-33
All-Time MIAC Record:	265-35-17
MIAC Championships:	13
Returners/First-years:	17/9
All-MIAC Honorees Returning/Lost:	1/1

## Gustavus Under Head Coach Mike Carroll

Year	Overall	MIAC	Conference Finish
1999-00	18-10-1	12-5-1	3rd
2000-01	23-6-1	16-2-0	1st
2001-02	23-5-2	18-0-1	1st
2002-03	14-9-4	11-4-3	3rd
2003-04	22-6-0	16-2-0	2nd
2004-05	25-4-1	17-1-0	1st
2005-06	22-5-2	17-0-1	1st
2006-07	25-3-0	17-1-0	1st
2007-08	25-3-0	18-0-0	1st
2008-09	22-2-4	16-0-2	1st
2009-10	26-6-2	14-3-1	1st
2010-11	22-5-3	14-2-2	1st
2011-12	24-4-2	16-1-1	1st
2012-13	27-2-1	18-0-0	1st
2013-14	17-8-2	14-4-0	2nd
2014-15	19-5-2	15-2-1	1st
2015-16	9-11-5	8-6-4	6th
<b>Totals</b>	<b>359-94-32</b>	<b>257-35-17</b>	<b>12 MIAC Titles</b>

## Around The League

### MIAC Standings

School	Points	MIAC	Overall
Augsburg	14	7-1	11-4
Concordia	14	7-1	10-4-1
Hamline	10	5-3	7-7-1
<b>Gustavus</b>	<b>10</b>	<b>4-2-2</b>	<b>8-5-2</b>
St. Thomas	9	3-2-3	4-6-3
Bethel	8	3-3-2	6-7-2
St. Olaf	6	3-5	4-10
St. Catherine	5	2-5-1	6-8-1
Saint Mary's	4	1-5-2	4-9-2
Saint Benedict	0	0-8	3-12

### This Week in the MIAC

#### Friday, January 20

Augsburg at Concordia | 7 p.m.  
 Saint Mary's at Hamline | 7 p.m.  
 Saint Benedict at Bethel | 7 p.m.  
 St. Catherine at St. Thomas | 7 p.m.  
 Gustavus at St. Olaf | 7 p.m.

#### Saturday, January 21

St. Olaf at Gustavus | 2 p.m.  
 Augsburg at Concordia | 2 p.m.  
 Hamline at Saint Mary's | 2 p.m.  
 Bethel at Saint Benedict | 3 p.m.  
 St. Thomas at St. Catherine | 7 p.m.

### MIAC Athlete-of-the-Week



Andrea Klug, Concordia  
 Sr., Goaltender  
 West Fargo, N.D. / West Fargo

Opponent	GA	Saves	Pct
at Hamline	1	23	.958
at Hamline	0	29	1.000
<b>Totals</b>	<b>0</b>	<b>52</b>	<b>.981</b>

## USCHO.com Div. III Poll

Rank	School (First Place Votes)	Overall	Points	Last
1	Plattsburgh (15)	14-1-0	150	1
2	Wisconsin-River Falls	15-1-0	128	2
3	Norwich	11-2-1	120	3
4	Adrian	12-2-0	109	4
5	Elmira	9-2-2	86	5
6	Middlebury	8-2-2	78	6
7	Lake Forest	13-2-1	57	7
8	Amherst	7-4-2	26	NR
9	Oswego	12-3-0	23	9
10	Augsburg	11-4-0	13	NR



## Gustavus Record When:

At home	5-3-1
On the road	3-2-1
Neutral Site	0-0-0
vs. MIAC opponents	4-2-2
vs. Non-conference opponents	4-3-0
vs. Top 10 opponents	0-3-1
GAC scores 4 or more goals	0-0-0
GAC scores 3 goals	5-0-1
GAC scores 2 or fewer goals	3-5-1
GAC scores first	6-1-2
Opponent scores first	2-4-0
GAC leads after 1st period	3-0-1
Opponent leads after 1st period	1-1-0
Tied after 1st period	4-4-1
GAC leads after 2nd period	7-1-2
Opponent leads after 2nd period	1-4-0
Tied after 2nd period	0-0-0
In overtime	0-0-1
Games decided by one goal	6-3-0
Games decided by two goals	2-0-0
Games decided by three goals	0-2-0
Games decided by four or more	0-0-0
GAC scores on the power play	7-1-2
GAC scoreless on the power play	1-4-1
GAC scores two or more PP goals	1-1-1
GAC outshoots opponent	8-3-1
GAC outshot by opponent	0-2-1
Shots equal	0-0-0
Tuesday Games	2-1-0
Wednesday Games	0-1-0
Friday Games	2-0-2
Saturday Games	4-3-0
Sunday Games	0-0-0
In November	4-3-1
In December	2-2-0
In January	1-1-1
In February	0-0-0
In March	0-0-0
Following a win	3-3-1
Following a loss	3-1-1
Following a tie	1-1-0

## 2016-17 Season By The Numbers

Largest Victory	2 (2x): Last vs. Saint Benedict (12/2/16)
Largest Defeat	3 (2x): Last vs. UW-River Falls (12/10/16)
Largest First Period Lead	2: vs. Saint Benedict (12/2/16)
Largest First Period Deficit	1 (2x): Last at Saint Benedict (12/3/16)
Largest Second Period Lead	3: at St. Catherine (1/14/17)
Largest Second Period Deficit	2: vs. UW-River Falls (12/10/16)
Most Goals Scored	3 (6x): Last at St. Catherine (1/14/17)
Fewest Goals Scored	0 (2x): Last at UW-River Falls (12/7/16)
Most Goals Allowed	4: vs. UW-River Falls (12/10/16)
Fewest Goals Allowed	0 (3x): Last vs. St. Norbert (1/7/17)
Largest Lead	3: at St. Catherine (1/14/17)
Largest Lead On Road	3: at St. Catherine (1/14/17)
Largest Lead At Home	2 (2x): Last vs. Saint Benedict (12/2/16)
Largest Blown Lead	2: vs. UW-Stevens Point (11/8/16)
Largest Deficit	3 (2x): Last vs. UW-River Falls (12/10/16)
Largest Deficit On Road	3: at UW-River Falls (12/7/16)
Largest Deficit At Home	3: vs. UW-River Falls (12/10/16)
Largest Comeback-Win/Tie	1 (2x): Last at Saint Benedict (12/3/16)



## Last Time It Happened

### COMEBACKS

#### GAC won when trailing after two periods

November 29, 2016 vs. UW-Eau Claire. Trailed 2-1 after the second period, Gustavus scored twice in the third to capture a 3-2 victory.

#### Opponent won when trailing after two periods

Nov. 8, 2016 vs. UW-Stevens Point. Gustavus led 2-0 going into third period, but Blazers scored three in third period to earn 3-2 victory.

#### Overcame 1-goal deficit and won

GAC: December 3, 2016 at Saint Benedict. Trailed 1-0 after the first, Gustavus won 4-2.  
OPP: Dec. 5, 2015 vs. Saint Benedict. Gustavus led 2-1 after second, Saint Ben's won 3-2

#### Overcame 2-goal deficit and won

GAC: January 22, 2016 vs. St. Olaf College. Trailed 3-1 after the first, Gustavus won 4-3.  
OPP: Nov. 8, 2016 vs. UW-Stevens Point. Gustavus led 2-0 going into third period, but Pointers scored three in third period to earn 3-2 victory.

#### Overcame a 3-goal deficit and won

GAC: March 1, 1998 vs. University of Minnesota Club. Gusties scored one in the second and three in the third to win 4-3.

OPP: Never

### OVERTIME GAMES

#### Won overtime game

GAC: Feb. 5, 2016 at Saint Mary's. Emily Reibert scored 4:15 into overtime to win 3-2.

OPP: Dec. 9, 2016 vs. UW-River Falls

#### Tied overtime game

Jan. 13, 2017 vs St. Catherine

### SERIES SWEEPS

#### Swept a 2-game regular season home-home series

GAC: Dec. 2 and 3, 2016 vs. Saint Benedict (3-1 Friday in St. Peter, 3-2 Saturday in St. Cloud)

OPP: Feb. 12-13 vs. Bethel. (3-1 Friday night in Blaine, 3-2 on Saturday in St. Peter)

#### Swept a 2-game regular season home series

GAC: Nov. 14-15, 2014 vs. Concordia. (3-1, 2-0)

OPP: Never

#### Swept a 2-game regular season away series

GAC: Nov. 15-16, 2013 at Concordia. (4-1, 2-0)

OPP: Never. (MIAC Playoffs: March 10-11, 2000 at Augsburg. (4-1, 2-1)

### SHUTOUTS

#### Last Shutout

GAC: Jan. 7, 2017 vs. St. Norbert, 1-0

OPP: Dec. 7, 2016 at UW-River Falls, 3-0

#### Last Home Shutout

GAC: Jan. 7, 2017 vs. St. Norbert, 1-0

OPP: Dec. 10, 2016 vs. UW-River Falls, 4-1

#### Last Road Shutout

GAC: Jan. 23, 2016 at St. Olaf, 5-0

OPP: Dec. 7, 2016 at UW-River Falls, 3-0

#### Scoreless Ties (2 in program history)

Jan. 14, 2010 vs. Trinity (Conn.)

Feb. 17, 2009 at UW-Stevens Point

### EXTRA ATTACKER GOALS

#### Scored an extra attacker goal

GAC: Jan. 29, 2016 at Concordia. Erica Power scored w/ 38 sec. left. Concordia won 6-5.

OPP: Jan. 14, 2017 at St. Catherine. Gustavus won 3-2.

### SHORTHANDED GOALS

#### Scored a shorthanded goal

GAC: Jan 29, 2016 at Concordia. Erica Power scored shorthanded goal in third period to put Gustavus up 4-2.

OPP: Jan. 22, 2016 at Gustavus. Jane Vezina scored shorthanded in the first period of a 4-3 win for the Gusties.

#### Scored two shorthanded goals

GAC: Nov. 22, 2008 at St. Olaf. Melissa Mackley scored two short-handed goals in the third period.

Gustavus won 4-2.

OPP: Never

### EMPTY NET GOALS

#### Scored an empty net goal

GAC: Dec. 2, 2016 vs. Saint Benedict. Kaitlyn Klein scored EN at 18:36 in 3-1 win for the Gusties in St. Peter.

OPP: Feb. 12, 2016 at Bethel. Bethel won 3-1.

### TEAM GOALS IN A PERIOD

#### Team scored 5 or more goals in a period

GAC: Feb. 23, 2013 vs. Saint Benedict. The Gusties scored six goals in the second period on their way to an 8-2 victory in St. Peter.

OPP: Dec. 3, 1998 at the University of Minnesota (Mariucci Arena. Gophers scored five goals in the first period and won 8-1.

### PENALTY SHOTS

#### Scored on a penalty shot

GAC: Never.

OPP: March 19, 2011 vs. Middlebury (NCAA 3rd Place Game, Rochester, N.Y.). Penalty shot goal scored after Lindsey Hjelm checking penalty in the second period. Middlebury won 5-0.

### PENALTIES

#### Not penalized

GAC: Jan. 8, 2016 at UW-Stevens Point. Gustavus lost 4-0.

OPP: Dec. 2, 2000 at St. Catherine. St. Kate's won 4-3.

#### Neither team was penalized

Jan. 30, 1998 at Saint Mary's. Gusties won 6-2.

### HAT TRICKS

#### Last individual 3-goal game

GAC: Nov. 21, 2015 vs. Augsburg. Allison Eder-Zdechlik scored three goals (one even, one shorthanded, one empty net) in a 4-1 Gustavus win in St. Peter.

OPP: Jan. 22, 2016 vs. St. Olaf. Jane Vezina scored three times in 4-3 Gustie win.

#### Last individual 4-goal game

GAC: Dec. 2, 2011 at Augsburg. Allie Schwab scored three PP goals and an even goal in a 9-0 shutout.

OPP: Never.

#### All goals scored by one player (3+ Goals)

GAC: Never.

OPP: Dec. 2, 2006 at Hamline. Melanie Levielle scored all three goals in a 4-3 loss.

### SHOTS ON GOAL

#### Fewer than 15 shots in a game

GAC: Dec. 3, 1998 at the University of Minnesota, 11 shots. Minnesota won 8-1.

OPP: Dec. 2, 2016 vs. Saint Benedict, 8 shots. Gustavus won 3-1.

#### Fewer than 20 shots in a game

GAC: Nov. 5, 2016 at UW-Eau Claire, 16 shots. Gustavus won 3-1.

OPP: Nov. 8, 2016 vs. UW-Stevens Point, 15 shots. UWSP won 3-2.

#### 40 or more shots in a game

GAC: Feb. 13, 2016 vs. Bethel, 41 shots. Bethel won 3-2.

OPP: Nov. 11, 2016 at St. Thomas, 43 shots. Tied 2-2 (OT).

#### 50 or more shots in a game

GAC: Dec. 2, 2016 vs. Saint Benedict, 53 shots. Gustavus won 3-1.

OPP: Nov. 23, 1998 vs. the University of Minnesota: 51 shots. Minnesota won 6-0.

#### 60 or more shots in a game

GAC: Feb. 15, 2013 at St. Olaf, 61 shots. Gustavus won 7-4.

OPP: Feb. 5, 1998 at Boston College, 65 shots. BC won 10-1.

### SINGLE GAME POINTS

#### Player had four points in a game

GAC: Nov. 13, 2014 vs. St. Thomas. Diana Draayer scored three goals, one assist in 6-4 win over St. Thomas.

OPP: Mar. 18, 2011 vs. Norwich (NCAA Semifinals). Julie Fortier scored three goals with an assist in a 5-4 Norwich victory.

#### Player had five points in a game

GAC: Dec. 2, 2011 at Augsburg. Allie Schwab scored three PP goals and an even goal with an assist in a 9-0 shutout.

OPP: Mar. 18, 2005 vs. Middlebury. (NCAA Semifinals) Lorna Griffis scored two goals with three assists in a 7-3 Middlebury win.

#### Player had six or more points in a game

GAC: Feb. 11, 2005 at St. Catherine. Andrea Peterson scored two goals with six assists in a 13-0 win. (Most individual points in a game in program history)

OPP: Jan. 30, 1999 at Middlebury. Michelle Labbe scored three goals with three assists in a 8-0 Middlebury win.



## Carroll At A Glance

### Hometown

- Edina, Minnesota

### Education

- Bachelor's Degree: Recreation, Parks, and Leisure Services (Minnesota State, Mankato '82)

### Family

- Wife: Terri
- Children: Matt and Mike

### Coaching

- 1983-84 – Assistant Coach, University of St. Thomas
- 1984-85 – Assistant Coach, Fergus Falls High School
- 1986-87 – Head Coach, Fergus Falls Community College
- 1990-99 – Head Coach, Mankato West High School
- 1999-Present – Head Coach, Gustavus Adolphus College

Years At Gustavus: 17

All-time Record (17 seasons): 359-94-32

All-time MIAC Record: 257-33-8

MIAC Titles: 12

MIAC Playoff Titles: 11

NCAA Tournaments: 11

NCAA Tournament Record: 8-16-0

Final Fours: 7

Most Wins In A Season: 27 (2012-13)

Fewest Wins In A Season: 9 (2015-16)

\*\*\* All-time winningest coach in Gustavus women's hockey history.

## Head Coach Mike Carroll

Mike Carroll is in his 18th season in 2016-17 as the women's head hockey coach at Gustavus. Within his tenure behind the Gustie bench, Carroll has turned Gustavus women's hockey into one of the most successful programs in NCAA Division III. He has compiled an overall record of 359-94-32 in 17 seasons and has the most coaching victories in the history of the program. Carroll is the second winningest coach all-time in NCAA Division III women's hockey with 359 wins and a winning percentage of .773.

Carroll has directed the Gusties to 12 MIAC regular season titles (2000-01, 2001-02, 2004-05, 2005-06, 2006-07, 2007-08, 2008-09, 2009-10, 2010-11, 2011-12, 2012-13, 2013-14) and has been named the MIAC Coach-of-the-Year six times (2001-02, 2003-04, 2004-05, 2005-06, 2010-11, 2012-13). In addition to coaching 36 players who have earned All-Conference honors 64 times, he has coached six MIAC Players-of-the-Year in Sarah Garrison, Andrea Peterson, Stefanie Ubl, Allie Schwab, Lindsey Hjelm and Carolyn Draayer. Carroll has also worked with 14 players who have earned All-America distinction 22 times and two American Hockey Coaches Association Players-of-the-Year, including four-time MIAC Player-of-the-Year and four-time All-American Andrea Peterson.

Prior to coming to Gustavus, Carroll served as the head boys' hockey coach at Mankato West High School from 1991 to 1999. Carroll's college coaching resume included a stint as head men's hockey coach at Fergus Falls Community College from 1986 to 1987 as well as a season as the assistant men's coach at the University of St. Thomas in 1983. Carroll also ended a 19-year career as the head coach of the Gustavus baseball team in the spring of 2015.

Carroll, an Edina, Minnesota native, competed in hockey and baseball at Mankato State. After graduating with a degree in municipal recreation in 1982, Carroll played professional baseball in the Montreal Expos organization for two years. Carroll was inducted into the Edina High School Athletics Hall of Fame in 2012 and the Minnesota State University-Mankato Athletics Hall of Fame in 2013.

Mike and his wife, Terri, live in Mankato and have two sons, Matt and Mike.

## 2016-17 Roster

### Breakdown

#### Returners (17)

Madison Bergren  
Courtney Bethune  
Marina Chapman  
Amanda DiNella  
Diana Draayer  
Laine Fischer  
Katy Fuller  
Emily Gustafson  
Laura Johnson  
Kaitlyn Klein  
Allie Lewis  
Erin Moes  
Erica Power  
Paige Press  
Rachel Skoglund  
Kalley Spreiter  
Allie Stanger

#### Newcomers (9)

Nicole Abraham  
Case Bartelings  
Sonje Carlson  
Kristen Cash  
Bailey Jackson  
Taylor Nelson  
Tegan Rodriguez  
Paulina Scheid  
Amelia Vosen

#### By Class

##### Seniors (3)

Courtney Bethune  
Emily Gustafson  
Allie Lewis

##### Juniors (6)

Diana Draayer  
Katy Fuller  
Laura Johnson  
Kaitlyn Klein  
Erica Power  
Rachel Skoglund

##### Sophomores (8)

Madison Bergren  
Marina Chapman  
Amanda DiNella  
Laine Fischer  
Erin Moes  
Paige Press  
Kalley Spreiter

##### First-Years (9)

Nicole Abraham  
Case Bartelings  
Sonje Carlson  
Kristen Cash  
Bailey Jackson  
Taylor Nelson  
Tegan Rodriguez  
Paulina Scheid  
Amelia Vosen

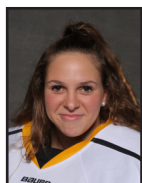
## 2016-17 Numerical Roster

No.	Name	Yr.	Pos.	Hgt.	Hometown/High School
1	Amanda DiNella	So.	G	5-4	Oakbrook Terrace, Ill./Willowbrook
2	Courtney Bethune	Sr.	D	5-8	Fort Frances, Ontario/Warroad
3	Nicole Abraham	Fy.	D	5-5	St. Paul, Minn./Roseville
4	Diana Draayer	Jr.	F	5-5	Deephaven, Minn./Minnetonka
5	Rachel Skoglund	Jr.	F/D	5-3	Forest Lake, Minn./Forest Lake
6	Emily Gustafson	Sr.	F	5-1	Esko, Minn./Esko
7	Kalley Spreiter	So.	F	5-5	Litchfield, Minn./Litchfield
8	Case Bartelings	Fy.	F	5-7	St. Paul, Minn./Home School
9	Erica Power	Jr.	F	5-6	Lakeville, Minn./Apple Valley
10	Marina Chapman	So.	F	5-9	South Haven, Minn./Annandale
11	Ameilia Vosen	Fy.	F	5-1	Nowthen, Minn./Totino-Grace
12	Kristen Cash	Fy.	D	5-6	Roseville, Minn./Mounds View
13	Tegan Rodriguez	Fy.	F	5-6	Sioux City, Iowa/Sioux City North
14	Katy Fuller	Jr.	F	5-5	Minneapolis, Minn./Southwest
15	Erin Moes	So.	F/D	5-5	Hastings, Minn./Hastings
16	Madison Bergren	So.	F	5-6	Mahtomedi, Minn./Mahtomedi
17	Paulina Scheid	Fy.	D	5-5	Stillwater, Minn./Stillwater
18	Allie Stanger	So.	F	5-11	Paynesville, Minn./Paynesville
19	Allie Lewis	Sr.	F	5-3	Kearney, Neb./Shattuck-Saint Mary's
20	Kaitlyn Klein	Jr.	F	5-6	Plymouth, Minn./Wayzata
21	Laine Fischer	So.	F/D	5-8	Northfield, Minn./Northfield
22	Sonje Carlson	Fy.	D	5-7	Inver Grove Heights, Minn./Academy of Holy Angels
23	Laura Johnson	Jr.	D	5-5	Chanhassen, Minn./Chanhassen
24	Taylor Nelson	Fy.	F	5-6	Plymouth, Minn./Wayzata
30	Bailey Jackson	Fy.	G	5-5	Chaska, Minn./Chaska
33	Paige Press	So.	G	5-3	Cottage Grove, Minn./Park

## Alphabetical Roster/Pronunciation Guide

NO.	NAME	Pronunciation
3	Abraham, Nicole	
8	Bartelings, Case	
16	Bergren, Madison	
2	Bethune, Courtney	beth-00N
22	Carlson, Sonje	
12	Cash, Kristen	
10	Chapman, Marina	
35	DiNella, Amanda	
4	Draayer, Diana	DRAY-er
21	Fischer, Laine	
14	Fuller, Katy	
6	Gustafson, Emily	GUST-uhf-son
30	Jackson, Bailey	
23	Johnson, Laura	
20	Klein, Kaitlyn	Kline
19	Lewis, Allie	
15	Moes, Erin	
24	Nelson, Taylor	
9	Power, Erica	
35	Press, Paige	
13	Rodriguez, Tegan	
17	Scheid, Paulina	
5	Skoglund, Rachel	SKOHG-lund
7	Spreiter, Kalley	SPRITE-er
18	Stanger, Allie	
11	Vosen, Ameilia	

## Player Profiles



**#1 Amanda DiNella**

So., Goaltender  
Oakbrook Terrace, Ill./Willowbrook

Season Numbers

GP-GS	GAA	Save Pct.	Record
9-7	1.40	.929	4-2-1



**#2 Courtney Bethune**

Sr., Defender  
Fort Frances, Ont./Warroad

Season Numbers

GP	Goals	Assists	Points
10	1	0	1



**#3 Nicole Abraham**

Fy., Defender  
St. Paul, Minn./Roseville

Season Numbers

GP	Goals	Assists	Points
14	1	2	3

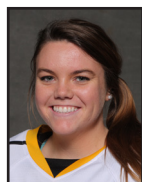


**#4 Diana Draayer**

Jr., Forward  
Deephaven, Minn./Minnetonka

Season Numbers

GP	Goals	Assists	Points
15	0	4	4



**#5 Rachel Skoglund**

Jr., Forward/Defender  
Forest Lake, Minn./Forest Lake

Season Numbers

GP	Goals	Assists	Points
12	1	1	2



**#6 Emily Gustafson**

Sr., Forward  
Esko, Minn./Esko

Season Numbers

GP	Goals	Assists	Points
15	3	1	4



**#7 Kalley Spreiter**

So., Forward  
Litchfield, Minn./Litchfield

Season Numbers

GP	Goals	Assists	Points
7	0	1	1



**#8 Case Bartelings**

Fy., Forward  
St. Paul, Minn./MN Revolution

Season Numbers

GP	Goals	Assists	Points
2	0	0	0



**#9 Erica Power**

Jr., Forward  
Lakeville, Minn./Apple Valley

Season Numbers

GP	Goals	Assists	Points
14	2	6	8



## Player Profiles



**#10 Marina Chapman**  
So., Forward  
South Haven, Minn./Annandale

Season Numbers

GP	Goals	Assists	Points
15	1	3	4



**#11 Amelia Vosen**  
Fy., Forward  
Anoka, Minn./Totino-Grace

Season Numbers

GP	Goals	Assists	Points
14	1	4	5



**#12 Kristen Cash**  
Fy., Defender  
Roseville, Minn./Mounds View

Season Numbers

GP	Goals	Assists	Points
15	1	4	5



**#13 Tegan Rodriguez**  
Fy., Forward  
Sioux City, Iowa/Sioux City North

Season Numbers

GP	Goals	Assists	Points
4	0	0	0



**#14 Katy Fuller**  
Jr., Forward  
Minneapolis, Minn./Southwest

Season Numbers

GP	Goals	Assists	Points
11	1	2	3



**#15 Erin Moes**  
So., Forward/Defender  
Hastings, Minn./Hastings

Season Numbers

GP	Goals	Assists	Points
15	1	1	2



**#16 Madison Bergren**  
So., Forward  
Mahtomedi, Minn./Mahtomedi

Season Numbers

GP	Goals	Assists	Points
6	0	0	0



**#17 Paulina Scheid**  
Fy., Defender  
Stillwater, Minn./Stillwater

Season Numbers

GP	Goals	Assists	Points
13	0	0	0



**#18 Allie Stanger**  
So., Forward  
Paynesville, Minn./Paynesville

Season Numbers

GP	Goals	Assists	Points
15	2	3	5



## Player Profiles



**#19 Allie Lewis**  
Sr., Forward  
Kearney, Neb./Shattuck-Saint Mary's

Season Numbers

GP	Goals	Assists	Points
15	3	1	4



**#20 Kaitlyn Klein**  
Jr., Forward  
Plymouth, Minn./Wayzata

Season Numbers

GP	Goals	Assists	Points
15	7	1	8



**#21 Laine Fischer**  
So., Forward/Defender  
Northfield, Minn./Northfield

Season Numbers

GP	Goals	Assists	Points
15	0	4	4



**#22 Sonje Carlson**  
Fy., Defender  
Inver Grove Heights, Minn./Academy of Holy Angels

Season Numbers

GP	Goals	Assists	Points
3	0	0	0



**#23 Laura Johnson**  
Jr., Defender  
Chanhassen, Minn./Chanhassen

Season Numbers

GP	Goals	Assists	Points
15	2	1	3



**#24 Taylor Nelson**  
Fy., Forward  
Plymouth, Minn./Wayzata

Season Numbers

GP	Goals	Assists	Points
11	1	0	1



**#30 Bailey Jackson**  
Fy., Goaltender  
Chaska, Minn./Chaska

Season Numbers

GP-GS	GAA	Save Pct.	Record
7-7	2.01	.903	3-2-1



**#33 Paige Press**  
So., Goaltender  
Cottage Grove, Minn./Park

Season Numbers

GP-GS	GAA	Save Pct.	Record
2-1	3.00	.862	1-1-0

**The Automated ScoreBook**  
**Gustavus Adolphus Overall Team Statistics (as of Jan 16, 2017)**  
**All games**

Overall: 8-5-2 Conf: 4-2-2 Home: 5-3-1 Away: 3-2-1 Neut: 0-0-0

<b>TEAM STATISTICS</b>	<b>GACW</b>	<b>OPP</b>
<b>SHOT STATISTICS</b>		
Goals-Shot attempts	28-468	27-307
Shot pct.	.060	.088
Goals/Game	1.9	1.8
Shots/Game	31.2	20.5
Assists	39	37
<b>POWER PLAYS</b>		
Goals-Power Plays	14-63	9-51
Conversion Percent	.222	.176
Shot Attempts	98	81
Shot Percent	.143	.111
<b>GOAL BREAKDOWN</b>		
Total Goals	28	27
Power Play	14	9
Short-handed	0	0
Empty net	1	0
Penalty	0	0
Unassisted	3	3
Overtime	0	0
Shootout	0	0
Delayed Penalty	0	0
<b>PENALTIES</b>		
Number	54	70
Minutes	108	143
Penalties/Game	3.6	4.7
Pen minutes/Game	7.2	9.5
Minor	54	69
Major	0	1
10-minute Misconduct	0	0
Game Misconduct	0	0
Gross Misconduct	0	0
Match	0	0
SHOOTOUTS (Made-Att)	0-0	0-0
<b>ATTENDANCE</b>		
Total	1633	977
Dates/Avg Per Date	9/181	6/163
Neutral Site #/Avg	0/0	

<b>Goals by Period</b>	<b>1st</b>	<b>2nd</b>	<b>3rd</b>	<b>OT</b>	<b>Total</b>
Gustavus Adolphus	7	12	9	0	28
Opponents	4	8	15	0	27

<b>Saves by Period</b>	<b>1st</b>	<b>2nd</b>	<b>3rd</b>	<b>OT</b>	<b>Total</b>
Gustavus Adolphus	68	104	107	1	280
Opponents	154	153	131	2	440

The Automated ScoreBook  
 Gustavus Adolphus Category Leaders (as of Jan 16, 2017)  
 All games

## Points	GP	G	A	Pts	Sh
20 Kaitlyn Klein	15	7	1	8	53
9 Erica Power	14	2	6	8	38
18 Allie Stanger	15	2	3	5	38
12 Kristen Cash	15	1	4	5	24
11 Amelia Vosen	14	1	4	5	28
6 Emily Gustafson	15	3	1	4	33
19 Allie Lewis	15	3	1	4	24
10 Marina Chapman	15	1	3	4	35
4 Diana Draayer	15	0	4	4	37
21 Laine Fischer	15	0	4	4	23

## Goals	GP	G	A	Pts	Sh
20 Kaitlyn Klein	15	7	1	8	53
6 Emily Gustafson	15	3	1	4	33
19 Allie Lewis	15	3	1	4	24
9 Erica Power	14	2	6	8	38
18 Allie Stanger	15	2	3	5	38
23 Laura Johnson	15	2	1	3	16
12 Kristen Cash	15	1	4	5	24
11 Amelia Vosen	14	1	4	5	28
10 Marina Chapman	15	1	3	4	35
3 Nicole Abraham	14	1	2	3	27

## Power-Play Goals	GP	PPG
20 Kaitlyn Klein	15	4
23 Laura Johnson	15	2

## Short-Handed Goals	GP	SHG
20 Kaitlyn Klein	15	3

## Game-Winning Goals	GP	GWG
20 Kaitlyn Klein	15	3

## Plus/Minus	GP	+/-
21 Laine Fischer	15	+4
2 Courtney Bethune	10	+3
15 Erin Moes	15	+2
18 Allie Stanger	15	+1
20 Kaitlyn Klein	15	+1
5 Rachel Skoglund	12	+1

## Assists	GP	G	A	Pts	Sh
9 Erica Power	14	2	6	8	38
12 Kristen Cash	15	1	4	5	24
11 Amelia Vosen	14	1	4	5	28
4 Diana Draayer	15	0	4	4	37
21 Laine Fischer	15	0	4	4	23
18 Allie Stanger	15	2	3	5	38
10 Marina Chapman	15	1	3	4	35
3 Nicole Abraham	14	1	2	3	27
14 Katy Fuller	11	1	2	3	15
20 Kaitlyn Klein	15	7	1	8	53

## Shots	GP	G	A	Pts	Sh	Sh%
20 Kaitlyn Klein	15	7	1	8	53	.132
9 Erica Power	14	2	6	8	38	.053
18 Allie Stanger	15	2	3	5	38	.053
4 Diana Draayer	15	0	4	4	37	.000
10 Marina Chapman	15	1	3	4	35	.029
6 Emily Gustafson	15	3	1	4	33	.091
11 Amelia Vosen	14	1	4	5	28	.036
3 Nicole Abraham	14	1	2	3	27	.037
15 Erin Moes	15	1	1	2	27	.037
12 Kristen Cash	15	1	4	5	24	.042

## Shot Pct.	GP	G	A	Pts	Sh	Sh%
24 Taylor Nelson	11	1	0	1	7	.143
2 Courtney Bethune	10	1	0	1	7	.143
20 Kaitlyn Klein	15	7	1	8	53	.132
23 Laura Johnson	15	2	1	3	16	.125
19 Allie Lewis	15	3	1	4	24	.125
6 Emily Gustafson	15	3	1	4	33	.091
5 Rachel Skoglund	12	1	1	2	13	.077
14 Katy Fuller	11	1	2	3	15	.067
9 Erica Power	14	2	6	8	38	.053
18 Allie Stanger	15	2	3	5	38	.053

## Penalties	GP	Pen	Min
2 Courtney Bethune	10	9	18
23 Laura Johnson	15	6	12
5 Rachel Skoglund	12	5	10
17 Paulina Scheid	13	4	8
19 Allie Lewis	15	4	8
14 Katy Fuller	11	3	6
6 Emily Gustafson	15	3	6
15 Erin Moes	15	3	6
7 Kalley Spreiter	7	2	4
12 Kristen Cash	15	2	4

## Penalty Minutes	GP	Pen	Min
2 Courtney Bethune	10	9	18
23 Laura Johnson	15	6	12
5 Rachel Skoglund	12	5	10
17 Paulina Scheid	13	4	8
19 Allie Lewis	15	4	8
15 Erin Moes	15	3	6
14 Katy Fuller	11	3	6
6 Emily Gustafson	15	3	6
7 Kalley Spreiter	7	2	4
12 Kristen Cash	15	2	4

**The Automated ScoreBook  
Gustavus Adolphus Combined Team Statistics (as of Jan 16, 2017)  
All games**

Date	Opponent		Score	Att.
Nov 05	at UW-Eau Claire	W	3-1	130
Nov 08	UW-STEVENS POINT	L	2-3	200
* Nov 11	at St. Thomas	Tot	2-2	214
* Nov 12	ST. THOMAS	L	2-3	278
* Nov 18	AUGSBURG	W	1-0	167
* 11/19/16	at Augsburg	L	0-1	182
Nov 22	UW-SUPERIOR	W	1-0	123
Nov 29	UW-EAU CLAIRE	W	3-2	154
* Dec 02	SAINT BENEDICT	W	3-1	178
* Dec 03	at Saint Benedict	W	3-2	150
Dec 07	at UW-River Falls	L	0-3	201
Dec 10	#3 UW-RIVER FALLS	L	1-4	210
Jan 07	ST. NORBERT	W	1-0	111
* Jan 13	ST. CATHERINE	Tot	3-3	212
* Jan 14	at St. Catherine	W	3-2	100

TEAM STATISTICS	GACW	OPP
<b>SHOT STATISTICS</b>		
Goals-Shot attempts	28-468	27-307
Shot pct.	.060	.088
Goals/Game	1.9	1.8
Shots/Game	31.2	20.5
<b>POWER PLAYS</b>		
Goals-Power Plays	14-63	9-51
Conversion Percent	.222	.176
Shot Attempts	98	81
Shot Percent	.143	.111
<b>GOAL BREAKDOWN</b>		
Power Play	14	9
Short-handed	0	0
Empty net	1	0
Penalty	0	0
Unassisted	3	3
Overtime	0	0
Shootout	0	0
Delayed Penalty	0	0
<b>PENALTIES</b>		
Number	54	70
Minutes	108	143
Penalties/Game	3.6	4.7
Pen minutes/Game	7.2	9.5
SHOOTOUTS (Made-Att)	0-0	0-0

Record:	Overall	Home	Away	Neutral
ALL GAMES	8-5-2	5-3-1	3-2-1	0-0-0
CONFERENCE	4-2-2	2-1-1	2-1-1	0-0-0
NON-CONFERENCE	4-3-0	3-2-0	1-1-0	0-0-0

#	Player	gp	g	a	pts	sh	sh%	pen-min	pp	sh
20	Kaitlyn Klein	15	7	1	8	53	.132	1-2	4	0
9	Erica Power	14	2	6	8	38	.053	1-2	1	0
18	Allie Stanger	15	2	3	5	38	.053	1-2	1	0
12	Kristen Cash	15	1	4	5	24	.042	2-4	1	0
11	Amelia Vosen	14	1	4	5	28	.036	0-0	0	0
6	Emily Gustafson	15	3	1	4	33	.091	3-6	1	0
19	Allie Lewis	15	3	1	4	24	.125	4-8	0	0
10	Marina Chapman	15	1	3	4	35	.029	2-4	0	0
4	Diana Draayer	15	0	4	4	37	.000	2-4	0	0
21	Laine Fischer	15	0	4	4	23	.000	1-2	0	0
23	Laura Johnson	15	2	1	3	16	.125	6-12	2	0
3	Nicole Abraham	14	1	2	3	27	.037	1-2	1	0
14	Katy Fuller	11	1	2	3	15	.067	3-6	1	0
15	Erin Moes	15	1	1	2	27	.037	3-6	1	0
5	Rachel Skoglund	12	1	1	2	13	.077	5-10	1	0
2	Courtney Bethune	10	1	0	1	7	.143	9-18	0	0
24	Taylor Nelson	11	1	0	1	7	.143	2-4	0	0
7	Kalley Spreiter	7	0	1	1	2	.000	2-4	0	0
8	Case Bartelings	2	0	0	0	1	.000	0-0	0	0
16	Madison Bergren	6	0	0	0	3	.000	0-0	0	0
22	Sonje Carlson	3	0	0	0	0	.000	0-0	0	0
30	Bailey Jackson	7	0	0	0	0	.000	1-2	0	0
13	Tegan Rodriguez	4	0	0	0	7	.000	0-0	0	0
17	Paulina Scheid	13	0	0	0	10	.000	4-8	0	0
TM	TEAM	6	0	0	0	0	.000	1-2	0	0
Total		15	28	39	67	468	.060	54-108	14	0
Opponents		15	27	37	64	307	.088	70-143	9	0

#	Goalie	gp	min	ga	gaavg	saves	save%	w-l-t
1	Amanda DiNella	9	471:02	11	1.40	143	.929	4-2-1
30	Bailey Jackson	7	357:29	12	2.01	112	.903	3-2-1
33	Paige Press	2	80:00	4	3.00	25	.862	1-1-0
TM	EMPTY NET	6	1:24	0	-	0	.000	0-0-0
Total		15	909:55	27	1.78	280	.912	8-5-2
Opponents		15	909:55	28	1.85	440	.940	5-8-2

Attendance Summary	GACW	Opponent
Total	1633	977
Dates/Avg Per Date	9/181	6/163
Neutral Site #/Avg	0/0	

Goals by Period	1st	2nd	3rd	Total
Gustavus Adolphus	7	12	9	28
Opponents	4	8	15	27

Saves by Period	1st	2nd	3rd	Total
Gustavus Adolphus	68	104	107	280
Opponents	154	153	131	440

**The Automated ScoreBook  
Gustavus Adolphus Game Results (as of Jan 16, 2017)  
All games**

<b>Date</b>	<b>Opponent</b>		<b>Score</b>	<b>Shots</b>	<b>Overall</b>	<b>Conf</b>	<b>Time</b>	<b>Att.</b>	<b>Goalie of record</b>
Nov 05	at UW-Eau Claire	W	3-1	16/30	1-0-0	0-0-0	2:57	130	Amanda DiNella
Nov 08	UW-STEVENS POINT	L	2-3	35/15	1-1-0	0-0-0	2:00	200	Amanda DiNella
* Nov 11	at St. Thomas	Tot	2-2	31/43	1-1-1	0-0-1	2:00	214	Bailey Jackson
* Nov 12	ST. THOMAS	L	2-3	27/24	1-2-1	0-1-1	1:55	278	Bailey Jackson
* Nov 18	AUGSBURG	W	1-0	21/20	2-2-1	1-1-1	1:48	167	Amanda DiNella
* 11/19/16	at Augsburg	L	0-1	33/17	2-3-1	1-2-1	1:53	182	Bailey Jackson
Nov 22	UW-SUPERIOR	W	1-0	31/22	3-3-1	1-2-1	1:50	123	Amanda DiNella
Nov 29	UW-EAU CLAIRE	W	3-2	34/13	4-3-1	1-2-1	2:00	154	Bailey Jackson
* Dec 02	SAINT BENEDICT	W	3-1	53/8	5-3-1	2-2-1	2:00	178	Amanda DiNella
* Dec 03	at Saint Benedict	W	3-2	25/18	6-3-1	3-2-1	2 hrs	150	Bailey Jackson
Dec 07	at UW-River Falls	L	0-3	22/23	6-4-1	3-2-1	1:54	201	Amanda DiNella
Dec 10	#3 UW-RIVER FALLS	L	1-4	24/26	6-5-1	3-2-1	2:00	210	Paige Press
Jan 07	ST. NORBERT	W	1-0	24/14	7-5-1	3-2-1	2:50	111	Paige Press
* Jan 13	ST. CATHERINE	Tot	3-3	46/17	7-5-2	3-2-2	2hrs	212	Amanda DiNella
* Jan 14	at St. Catherine	W	3-2	46/17	8-5-2	4-2-2	2:00	100	Bailey Jackson

<b>Team Record</b>	<b>W-L-T</b>	<b>Attendance</b>	<b>Dates</b>	<b>Total</b>	<b>Avg.</b>
Overall:	8-5-2	Total:	15	2610	174
Conference:	4-2-2	Home:	9	1633	181
Home:	5-3-1	Away:	6	977	163
Away:	3-2-1	Neutral:	0	0	0
Neutral:	0-0-0				
Overtime:	0-0-2				