



2015-16 Gustavus Adolphus College Women's Hockey Game Notes

Gustavus Sports Information

800 W College Ave, St. Peter, MN 56082
 gustavus.edu/athletics
 (507) 933-7647 • sportsinfo@gustavus.edu


Women's Hockey Media Contact
 Nick Hoelmer, Asst. Sports Information Director
 (507) 933-8411 • nhoelmer@gustavus.edu

Follow Gustavus Athletics Online

 **Twitter**
 @GustieAthletics

 **Flickr**
 flickr.com/photos/gogusties

 **Facebook**
 facebook.com/GustieAthletics

 **YouTube**
 youtube.com/gustavusathletics

 **Snap Chat**
 Username: Gusties

 **Instagram**
 @gustieathletics

2015-16 SCHEDULE

DATE	OPPONENT	TIME/RESULT
NOVEMBER		
3	UW-Superior	T 2-2
6	ST. OLAF COLLEGE (Non-Conference)	W 4-1
13	NO. 4 UNIVERSITY OF ST. THOMAS	W 6-4
14	No. 4 University of St. Thomas	L 3-5
20	Augsburg College	T 2-2
21	AUGSBURG COLLEGE	W 4-2
28	No. 2 Elmira College (Panther Classic)	L 1-2
29	No. 1 Plattsburgh State (Panther Classic)	L 3-5
DECEMBER		
4	College of Saint Benedict	T 2-2
5	COLLEGE OF SAINT BENEDICT	L 2-3
9	No. 8 UW-River Falls	L 2-4
11	NO. 8 UW-RIVER FALLS	L 1-2
JANUARY		
8	UW-Stevens Point	L 0-4
15	St. Catherine University	T 1-1
16	ST. CATHERINE UNIVERSITY	W 3-0
22	ST. OLAF COLLEGE	W 4-3
23	St. Olaf College	W 5-0
29	Concordia College	W 4-3
30	Concordia College	L 5-6
FEBRUARY		
5	Saint Mary's University	7 p.m.
6	SAINT MARY'S UNIVERSITY	2 P.M.
12	Bethel University	7 p.m.
13	BETHEL UNIVERSITY	2 P.M.
19	Hamline University	7 p.m.
20	HAMLIN UNIVERSITY	2 P.M.

HOME GAMES IN BOLD AND CAPS



Gustavus Adolphus College

Golden Gusties
 (7-8-4 Overall, 6-3-3 MIAC)

vs.

Saint Mary's University

Cardinals
 (6-10-3 Overall, 5-5-2 MIAC)



Game 20

Date: Friday, February 5 • **Time:** 7 p.m. **Location:** Winona, Minn.

Arena: Saint Mary's Ice Arena

Live Video: <http://portal.stretchinternet.com/smu/>

Live Stats: <http://portal.stretchinternet.com/smu/>

Game 21

Date: Saturday, February 6 • **Time:** 2 p.m. **Location:** St. Peter, Minn.

Arena: Don Roberts Ice Rink

Live Video: <http://portal.stretchinternet.com/gac/>

Live Stats: <https://gustavus.edu/athletics/whky/LIVE/xlive.htm>

Setting The Scene: The Gustavus Adolphus College women's hockey team takes on Saint Mary's University this weekend in a home-away series. The Gusties travel to Winona, Minn. on Friday, Feb. 5 for a 7 p.m. game at Saint Mary's Ice Arena, and return home to Don Roberts Ice Rink on Saturday, Feb. 6 for a 2 p.m. game at Don Roberts Ice Rink. Gustavus enters the series with a 7-8-4 overall record, and 6-3-3 mark in the MIAC, while Saint Mary's comes into the series at 6-10-3 overall and 5-5-2 in the league.

Last Time Out: Gustavus is most recently coming off of a series split with Concordia College this past weekend in Moorhead. In Friday's season opener, the Gusties won their fourth straight game with a 4-3 victory over the Cobbers. Gustavus looked to be in control going into the third and final period, as it had notched a goal in both the first and second periods. Then, just 1:18 into the third, Erin Moes extended the Gustie lead to 3-0 off an assist from Marina Chapman. However, Concordia battled back and brought the score to 3-2 by the 12:46 mark on goals from Tori Davis and Hannah Johnston. Thirty seconds after Johnston's goal though, Power broke the tie with a shorthanded goal at 13:16 to put the Gusties back up two at 4-2. Despite a goal from the Cobbers' Amber Schaack at 14:44, Gustavus was able to hold on earn its seventh conference victory.

Saturday was a different story for the Gusties, as they suffered a 6-5 loss to Concordia less than 24 hours after Friday's game. In a high-scoring contest that featured two rare hockey lead-changes, the Cobbers scored goals one and three, while the Gusties scored goals two and four through the first period and a half of play, tying the game at 2-2 with 3:56 to play in the second period. Emily Reibert (Sr., Inver Grove Heights, Minn.) gave the Gusties their first lead of the game at 3-2 with her third goal of the season at the 17:28 mark of the second period on Eder-Zdechlik's second assist of the day. However, the Cobbers took advantage of the remaining time left on the clock and tied the game at 3-3 going into the third period when Cobber forward Hannah Johnston scored her third goal of the season at 19:16. That goal seemed to light a fire under the home squad, and Concordia dominated the scoring for the first three-quarters of the final period, notching three goals to bring its lead to 6-3 with just under five minutes to play. However, Eder-Zdechlik gave herself a point hat trick with a goal at 16:18 to pull the Gusties to within two, and Erica Power (So., Lakeville, Minn.) scored an extra-attacker goal with 1:18 remaining to thrash the Cobber lead to 6-5 with time still left to tie. Unfortunately for Gustavus, an Eder-Zdechlik shot at 19:19 was saved by Cobber goalie Andrea Klug, and the Cobbers were able to escape with the 6-5 win.

Saint Mary's is coming off a tie and win over Augsburg College in a home-away series on Friday and Saturday. In Friday's 1-1 tie, Jamie Henderson (Madison, Wis.) scored her team-leading 10th goal of the season with 0.4 seconds remaining in the second period—snapping the Auggies' 13-period shutout streak and giving Saint Mary's a one-goal lead heading into the game's final 20 minutes. Cardinal goalie Tori Herrmann's (Elk River, Minn.) shutout bid came up nine seconds short however, as the Auggies netted the game-tying goal at 19:51, as Valerie Whichello beat the Cardinal senior to send the game into a scoreless overtime.

On Saturday, Saint Mary's got off to a 2-0 lead before the Auggies cut the deficit to 2-1 with just over six minutes remaining in regulation, but Rory Petrisin gave the Cardinals some breathing room with an empty-netter with 56 seconds remaining to secure the 3-1 win.

13 MIAC Championships • 11 NCAA Tournament Appearances

The Match Up Statistical Comparison

Gustavus		Saint Mary's
2.84 (1st)	Goals For	1.79 (7-7th)
2.63 (8th)	Goals Against	2.16 (4th)
21.4% (1st)	Power Play	14.1% (5th)
82.9% (7th)	Penalty Kill	84.8% (4th)
+7 (1st)	Special Teams Net	-3 (6th)
7.6 (6th)	Penalty Minutes	9.1 (2nd)

2015-16 season averages with MIAC ranks (10 teams)

The Series Gustavus vs. Saint Mary's

All-Time Record	40-5-3
Last Meeting	W 1-0
Current Streak	W 29

Coach Mike Carroll

Overall Record at Gustavus	357-91-31
vs. Saint Mary's	35-4-3

Coach Terry Mannor

Overall Record at Saint Mary's	95-141-31
vs. Gustavus	0-22-1

Gustavus

Last Five Seasons	11-0-0
-------------------	--------

<u>Date</u>	<u>Location</u>	<u>Result</u>
1/24/15	Winona	W 1-0
1/23/15	St. Peter	W 3-2
1/25/14	St. Peter	W 5-0
1/24/14	Winona	W 4-3
11/2/13	St. Peter	W 8-2
2/9/13	Winona	W 6-1
2/8/13	St. Peter	W 3-1
2/11/12	St. Peter	W 5-0
2/10/12	Winona	W 8-2
2/19/11	Winona	W 3-0
2/18/11	St. Peter	W 4-2

* - Denotes MIAC Playoff Game

** - Denotes MIAC Championship Game

Series Snapshot: This weekend's series with Concordia marks the 49th and 50th meetings between the Gusties and Cardinals in women's hockey. The Gusties hold the advantage in the all-time series with a record of 40-5-3 including last season's pair of one-goal 3-2 and 1-0 wins over Saint Mary's on Jan. 23 and 24.

About The Cardinals: Saint Mary's currently sits at No. 6 in the MIAC standings with 12 points, three behind the final playoff spot that Gustavus currently holds at No. 5 with 15 points.

The Cardinals are led by forwards Jamie Henderson and McKenna Parent, with the pair having tallied 15 and 13 points this season, respectively. Henderson, a sophomore has 11 goals and four assists, while Parent, a senior, has notched six goals and seven assists. Tori Hermann leads the Cardinals between the pipes. The senior goalie is 5-2-2 on the season after posting a .947 save percentage and 1.65 goals against average.

Saint Mary's is near the middle of the conference in every major statistical category, including a seventh place ranking in goals scored at 1.79 per game and a fourth place ranking in goals allowed at 2.16 per contest. The Cardinals are also known for the time they spend in the sin bin, as they average 9.1 penalty minutes per game.

Offense From Defense: Gustavus first-year Erin Moes currently ranks No. 1 in the MIAC in defender scoring. The Hastings native, known for her blue line slap shots, has 11 points this season on five goals and six assists. First-year Marina Chapman is also high on that list, as the defender turned forward is tied for sixth with eight total points on three goals and five assists.

Moes also ranks fourth in the conference in first-year scoring, just five points behind St. Thomas' Leah Schwartzman who has 16 points.

Shorthanded Queens: Gustavus is currently the No. 1 ranked team in the nation in shorthanded goals. The Gusties have tallied seven, with Buffalo State and UW-River Falls tied for second place with six. Bethel is the next highest MIAC team on the list, as the Royals are tied for seventh with three.

Gustavus Embarks On 19th Season Of Women's Hockey: The Gustavus women's hockey team is currently in its 19th season. Founded in 1997, the Gusties have attained an all-time record of 392-109-32, which stands as the second winningest program in all of NCAA Division III women's hockey. The Gustie women have won 13 MIAC titles in the 18 years of women's hockey in the conference. Those 14 titles rank first in front of St. Thomas (3), and Augsburg and Saint Mary's, who each have two. Gustavus has also earned the MIAC Playoff crown a total of 11 times, 10 of which have come in the past 12 years and led to 11 NCAA Tournament appearances.

Wearing The "C": In the 18-year history of the Gustavus women's hockey program, 36 players have earned the honor of being a captain. This year, three new players earn that title in senior Allison Eder-Zdechlik, junior Allie Lewis, and sophomore Diana Draayer.

Home Grown Talent: Of the 23 players on this year's roster, 20 are natives of Minnesota. The only players who reside outside the State of Hockey are Courtney Bethune, who hails from Fort Frances, Ontario, Allie Lewis, who is a native of Kearney, Nebraska, and Amanda DiNella from Oakbrook Terrace, Illinois.

Scorers Return: Despite losing two of its top four scorers from its 2014-15 squad, Gustavus will return 62 percent of its scoring from last season, including sophomore Erica Power who led last year's squad with 27 points (9G, 18A) and Allison Eder-Zdechlik who finished tied for second on the team with 20 points (9G, 11A).

A Balanced Approach: Thirteen of the Gusties' 23 players in 2015-16 are returners, and the Gusties also welcome back three of their five All-MIAC selections. However, the Gusties also welcome in 10 first-years, including five forwards, three defenders, and two goalies.



Gustavus Quick Facts

Location:	St. Peter, Minnesota
Address:	800 West College Ave. St. Peter, MN 56082
Founded:	1862
Enrollment:	2,456
Nickname:	Golden Gusties
School Colors:	Black and Gold
Home Ice:	Don Roberts Ice Rink
NCAA Affiliation:	NCAA Division III
Conference:	Minnesota Intercollegiate Athletic
President:	Rebecca M. Bergman
Athletic Director:	Tom Brown
Assistant Athletic Director:	Jared Phillips
Athletic Trainer:	Troy Banse
Equipment Manager:	Jed Friedrich
Sports Information Director:	CJ Siewert
Asst. Sports Information Director:	Nick Hoelmer

Gustavus Hockey Quick Facts

2014-15 Record:	19-5-2
2014-15 MIAC Record/Finish:	15-2-1 / 1st
All-Time Record:	393-110-32
All-Time MIAC Record:	262-32-15
MIAC Championships:	13
Returners/First-years:	13/10
All-MIAC Honorees Returning/Lost:	3/2

Gustavus Under Head Coach Mike Carroll

Year	Overall	MIAC	Conference Finish
1999-00	18-10-1	12-5-1	3rd
2000-01	23-6-1	16-2-0	1st
2001-02	23-5-2	18-0-1	1st
2002-03	14-9-4	11-4-3	3rd
2003-04	22-6-0	16-2-0	2nd
2004-05	25-4-1	17-1-0	1st
2005-06	22-5-2	17-0-1	1st
2006-07	25-3-0	17-1-0	1st
2007-08	25-3-0	18-0-0	1st
2008-09	22-2-4	16-0-2	1st
2009-10	26-6-2	14-3-1	1st
2010-11	22-5-3	14-2-2	1st
2011-12	24-4-2	16-1-1	1st
2012-13	27-2-1	18-0-0	1st
2013-14	17-8-2	14-4-0	2nd
2014-15	19-5-2	15-2-1	1st
2015-16	7-8-4	6-3-3	--
Totals	357-91-31	255-30-16	12 MIAC Titles

Around The League

MIAC Standings

School	Points	MIAC	Overall
St. Thomas	17	8-3-1	13-4-1
Concordia	16	8-4-0	10-8-1
Augsburg	16	7-3-2	10-7-2
Bethel	16	7-3-2	9-8-2
Gustavus	15	6-3-3	7-8-4
Saint Mary's	12	5-5-2	6-10-3
Hamline	11	5-6-1	8-9-2
Saint Benedict	11	5-6-1	7-11-1
St. Catherine	5	2-9-1	3-12-4
St. Olaf	1	0-11-1	1-17-1

This Weekend in the MIAC

Friday, February 5

Gustavus at Saint Mary's | 7 p.m.
 Augsburg at Hamline | 7 p.m.
 Concordia at St. Thomas | 7:30 p.m.
 Bethel at St. Olaf | 7:30 p.m.
 St. Catherine at Saint Benedict | 7:30 p.m.

Saturday, February 6

Saint Mary's at Gustavus | 2 p.m.
 Concordia at St. Thomas | 2 p.m.
 Saint Benedict at St. Catherine | 2 p.m.
 St. Olaf at Bethel | 3 p.m.
 Hamline at Augsburg | 7 p.m.

MIAC Athlete-of-the-Week



Erika Allen
 Fy., Goalie
 Robbinsdale, Minn./Cooper

Opponent	GA	SV	W/L
at St. Thomas	2	37	W
vs. St. Thomas	3	48	W
Totals	5	85	2-0

USCHO.com Div. III Poll

Rank	School	Overall	Points	Last
1	Plattsburgh (15)	20-0-0	150	1
2	Adrian	18-2-0	133	3
3	Elmira	15-3-1	115	2
4	Lake Forest	17-1-1	101	5
5	Amherst	13-1-3	92	6
6	Middlebury	11-3-3	76	7
7	Wisconsin-River Falls	15-4-1	54	8
8	St. Thomas	13-4-1	46	4
9	Norwich	13-6-0	25	10
10	Castleton	13-4-2	20	9



Gustavus Record When:

At home	5-2-0
On the road	2-4-4
Neutral Site	0-2-0
vs. MIAC opponents	6-3-3
vs. Non-conference opponents	1-5-1
vs. Top 10 opponents	1-5-0
GAC scores 4 or more goals	6-1-0
GAC scores 3 goals	1-2-0
GAC scores 2 or fewer goals	0-2-5
GAC scores first	6-1-2
Opponent scores first	1-7-2
GAC leads after 1st period	4-0-1
Opponent leads after 1st period	1-2-1
Tied after 1st period	2-5-2
GAC leads after 2nd period	6-2-1
Opponent leads after 2nd period	0-4-0
Tied after 2nd period	1-2-2
In overtime	0-2-3
Games decided by one goal	2-4-0
Games decided by two goals	1-3-0
Games decided by three goals	3-0-0
Games decided by four or more	1-1-0
GAC scores on the power play	7-5-2
GAC scoreless on the power play	0-4-1
GAC scores two or more PP goals	1-0-2
GAC outshoots opponent	6-4-4
GAC outshot by opponent	1-4-0
Shots equal	0-0-0
Tuesday Games	0-0-1
Wednesday Games	0-1-0
Friday Games	4-2-3
Saturday Games	3-4-0
Sunday Games	0-1-0
In November	3-3-2
In December	0-3-1
In January	4-2-1
In February	0-0-0
In March	0-0-0
Following a win	4-3-0
Following a loss	0-4-3
Following a tie	3-1-0
Night games	4-5-4
Day games	3-3-0

Who's Hot

Scoring vs. Concordia

Player	Games	Goals	Assists	Points	Point Streak
Allison Eder-Zdechlik	2	1	2	3	1
Erin Moes	2	1	0	1	--
Marina Chapman	2	1	3	4	2
Erica Power	2	2	1	3	4

Goaltending vs. Concordia

Player	Record	Minutes	GA	Saves	Scoreless Str.
Lindsey Hibbard	1-0-0	76:08	5	22	4:11

2015-16 Season By The Numbers

Largest Victory	5: vs. St. Olaf (1/23/16)
Largest Defeat	4: at UW-Stevens Point (1/8/16)
Largest First Period Lead	2: vs. Augsburg (11/21/15)
Largest First Period Deficit	2 (2x) Last: vs. St. Olaf (1/22/16)
Largest Second Period Lead	4: vs. St. Thomas (11/13/15)
Largest Second Period Deficit	4: at No. 7 UW-River Falls (12/9/15)
Most Goals Scored	6: vs. St. Thomas (11/13/15)
Fewest Goals Scored	0 : at UW- Stevens Point (1/8/16)
Most Goals Allowed	6: at Concordia (1/30/16)
Fewest Goals Allowed	0 (2x) Last: vs. St. Olaf (1/23/16)
Largest Lead	5: vs. St. Olaf (1/23/16)
Largest Lead On Road	5: vs. St. Olaf (1/23/16)
Largest Lead At Home	4: vs. St. Thomas (11/13/15)
Largest Blown Lead	2: vs. No. 1 Plattsburgh (11/29/15)
Largest Deficit	4: at UW-Stevens Point (1/8/16)
Largest Deficit On Road	4: at UW-Stevens Point (1/8/16)
Largest Deficit At Home	2 vs. St. Olaf (1/22/16)
Largest Comeback-Win/Tie	2 vs. St. Olaf (W4-3) (1/22/16)



Last Time It Happened

COMEBACKS

GAC won when trailing after two periods

December 13, 2014 vs. UW-Stevens Point. Trailed 1-0 early in the third, Gustavus scored three consecutive goals to capture a 3-1 victory.

Opponent won when trailing after two periods

Dec. 5, 2015 vs. Saint Benedict. Gustavus led CSB 2-1 going into third period, but Blazers scored once in third and once in overtime to earn 3-2 victory

Overcame 1-goal deficit and won

GAC: January 22, 2016 vs. St. Olaf College. Trailed 3-1 after the first, Gustavus won 4-3.
OPP: Dec. 5, 2015 vs. Saint Benedict. Gustavus led 2-1 after second, Saint Ben's won 3-2

Overcame 2-goal deficit and won

GAC: January 22, 2016 vs. St. Olaf College. Trailed 3-1 after the first, Gustavus won 4-3.
OPP: Nov. 29, 2015 vs. No. 1 Plattsburgh State. Gustavus led Plattsburgh 3-1 going into third period, but Cardinals scored four goals in third period to earn 5-3 win.

Overcame a 3-goal deficit and won

GAC: March 1, 1998 vs. University of Minnesota Club. Gusties scored one in the second and three in the third to win 4-3.

OPP: Never

OVERTIME GAMES

Won overtime game

GAC: March 1, 2012 vs. Bethel. Courtney Boucher scored 6:25 in to overtime to win 1-0 and advance to the MIAC Championship.

OPP: Dec. 5, 2015 vs. Saint Benedict

Tied overtime game

Jan 15, 2016 at St. Catherine

SERIES SWEEPS

Swept a 2-game regular season home-home series

GAC: Jan. 22 and 23, 2016 vs. St. Olaf. (4-3 Friday in St. Peter, 5-0 Saturday in Northfield)

OPP: Jan. 31-Feb. 1, 2014 vs. Saint Benedict. (4-2 Friday night in St. Peter, 4-2 again on Saturday in St. Cloud)

Swept a 2-game regular season home series

GAC: Nov. 14-15, 2014 vs. Concordia. (3-1, 2-0)

OPP: Never

Swept a 2-game regular season away series

GAC: Nov. 15-16, 2013 at Concordia. (4-1, 2-0)

OPP: Never. (MIAC Playoffs: March 10-11, 2000 at Augsburg. (4-1, 2-1)

SHUTOUTS

Last Shutout

GAC: Jan. 23, 2016 at St. Olaf, 5-0

OPP: Jan. 8, 2016 at UW-Stevens Point, 4-0

Last Home Shutout

GAC: Jan 16, 2016 vs. St. Catherine, 3-0

OPP: Jan. 9, 2015 vs. Adrian 1-0

Last Road Shutout

GAC: Jan. 23, 2016 at St. Olaf, 5-0

OPP: Jan. 8, 2016 at UW-Stevens Point, 4-0

Scoreless Ties (2 in program history)

Jan. 14, 2010 vs. Trinity (Conn.)

Feb. 17, 2009 at UW-Stevens Point

EXTRA ATTACKER GOALS

Scored an extra attacker goal

GAC: Jan. 29, 2016 at Concordia. Erica Power scored w/ 38 sec. left. Concordia won 6-5.

OPP: Dec. 5, 2015 (Saint Benedict) CSB won 3-2.

SHORTHANDED GOALS

Scored a shorthanded goal

GAC: Jan 29, 2016 at Concordia. Erica Power scored shorthanded goal in third period to put Gustavus up 4-2.

OPP: Jan. 22, 2016 at Gustavus. Jane Vezina scored shorthanded in the first period of a 4-3 win for the Gusties.

Scored two shorthanded goals

GAC: Nov. 22, 2008 at St. Olaf. Melissa Mackley scored two short-handed goals in the third period. Gusties won 4-2.

OPP: Never

EMPTY NET GOALS

Scored an empty net goal

GAC: Nov. 21, 2015 vs. Augsburg. Allison Eder-Zdechlik scored EN at 18:58 in 4-1 win for the Gusties in St. Peter.

OPP: Jan. 30, 2016 at Concordia. Tori Davis scored EN at 15:49 of a 6-5 Concordia win in Moorhead.

TEAM GOALS IN A PERIOD

Team scored 5 or more goals in a period

GAC: Feb. 23, 2013 vs. Saint Benedict. The Gusties scored six goals in the second period on their way to an 8-2 victory in St. Peter.

OPP: Dec. 3, 1998 at the University of Minnesota (Mariucci Arena. Gophers scored five goals in the first period and won 8-1.

PENALTY SHOTS

Scored on a penalty shot

GAC: Never.

OPP: March 19, 2011 vs. Middlebury (NCAA 3rd Place Game, Rochester, N.Y.). Penalty shot goal scored after Lindsey Hjelm checking penalty in the second period. Middlebury won 5-0.

PENALTIES

Not penalized

GAC: Jan. 8, 2016 at UW-Stevens Point. Gustavus lost 4-0.

OPP: Dec. 2, 2000 at St. Catherine. St. Kate's won 4-3.

Neither team was penalized

Jan. 30, 1998 at Saint Mary's. Gusties won 6-2.

HAT TRICKS

Last individual 3-goal game

GAC: Nov. 21, 2015 vs. Augsburg. Allison Eder-Zdechlik scored three goals (one even, one shorthanded, one empty net) in a 4-1 Gustavus win in St. Peter.

OPP: Jan. 22, 2016 vs. St. Olaf. Jane Vezina scored three times in 4-3 Gustie win.

Last individual 4-goal game

GAC: Dec. 2, 2011 at Augsburg. Allie Schwab scored three PP goals and an even goal in a 9-0 shutout.

OPP: Never.

All goals scored by one player (3+ Goals)

GAC: Never.

OPP: Dec. 2, 2006 at Hamline. Melanie Levielle scored all three goals in a 4-3 loss.

SHOTS ON GOAL

Fewer than 15 shots in a game

GAC: Dec. 3, 1998 at the University of Minnesota, 11 shots. Minnesota won 8-1.

OPP: Jan. 23, 2016 vs. St. Olaf, 12 shots. GAC won 5-0

Fewer than 20 shots in a game

GAC: DEC. 11, 2015 VS. UW-RIVER FALLS, 18 shots. Gustavus lost 2-1.

OPP: Jan. 23, 2016 vs. St. Olaf, 12 shots. GAC won 5-0

40 or more shots in a game

GAC: Jan. 15, 2016 vs. St. Catherine, 42 shots. Tied 1-1.

OPP: Nov. 29, 2014 at Plattsburgh, 42 shots. Tied 4-4.

50 or more shots in a game

GAC: Feb. 16, 2013 vs. St. Olaf, 51 shots. Gustavus won 6-2.

OPP: Nov. 23, 1998 vs. the University of Minnesota: 51 shots. Minnesota won 6-0.

60 or more shots in a game

GAC: Feb. 15, 2013 at St. Olaf, 61 shots. Gustavus won 7-4.

OPP: Feb. 5, 1998 at Boston College, 65 shots. BC won 10-1.

SINGLE GAME POINTS

Player had four points in a game

GAC: Nov. 13, 2014 vs. St. Thomas. Diana Draayer scored three goals, one assist in 6-4 win over St. Thomas.

OPP: Mar. 18, 2011 vs. Norwich (NCAA Semifinals). Julie Fortier scored three goals with an assist in a 5-4 Norwich victory.

Player had five points in a game

GAC: Dec. 2, 2011 at Augsburg. Allie Schwab scored three PP goals and an even goal with an assist in a 9-0 shutout.

OPP: Mar. 18, 2005 vs. Middlebury. (NCAA Semifinals) Lorna Griffis scored two goals with three assists in a 7-3 Middlebury win.

Player had six or more points in a game

GAC: Feb. 11, 2005 at St. Catherine. Andrea Peterson scored two goals with six assists in a 13-0 win. (Most individual points in a game in program history)

OPP: Jan. 30, 1999 at Middlebury. Michelle Labbe scored three goals with three assists in a 8-0 Middlebury win.



Carroll At A Glance

Hometown

- Edina, Minnesota

Education

- Bachelor's Degree: Recreation, Parks, and Leisure Services (Minnesota State, Mankato '82)

Family

- Wife: Terri
- Children: Matt and Mike

Coaching

- 1983-84 – Assistant Coach, University of St. Thomas
- 1984-85 – Assistant Coach, Fergus Falls High School
- 1986-87 – Head Coach, Fergus Falls Community College
- 1990-99 – Head Coach, Mankato West High School
- 1999-Present – Head Coach, Gustavus Adolphus College

Years At Gustavus: 16

All-time Record: 357-91-31

All-time MIAC Record: 255-30-16

MIAC Titles: 12

MIAC Playoff Titles: 11

NCAA Tournaments: 11

NCAA Tournament Record: 8-16-0

Final Fours: 7

Most Wins In A Season: 27 (2012-13)

Fewest Wins In A Season: 14 (2002-03)

*** All-time winningest coach in Gustavus women's hockey history.

Head Coach Mike Carroll

Mike Carroll is in his 17th season as the women's head hockey coach at Gustavus. Within his tenure behind the Gustie bench, Carroll has turned Gustavus women's hockey into one of the most successful programs in NCAA Division III. He has compiled an overall record of 357-91-31 in 16 seasons and has the most coaching victories in the history of the program.

Last season, the Gustavus women's hockey team regained its spot atop of the MIAC standings, finishing first in the final conference standings with 32 points at 15-2-1. However, the Gusties suffered a 6-3 loss to Bethel University in the MIAC Playoff Semifinals, which brought their season to an end and the team finished with an overall record of 19-5-2.

Carroll has directed the Gusties to 12 MIAC regular season titles (2000-01, 2001-02, 2004-05, 2005-06, 2006-07, 2007-08, 2008-09, 2009-10, 2010-11, 2011-12, 2012-13) and has been named the MIAC Coach-of-the-Year six times (2001-02, 2003-04, 2004-05, 2005-06, 2010-11, 2012-13, 2014-15). In addition to coaching 37 players who have earned All-Conference honors 64 times, he has coached five MIAC Players-of-the-Year in Sarah Garrison, Andrea Peterson, Stefanie Ubl, Allie Schwab, Lindsey Hjelm. Carroll has also worked with 14 players who have earned All-America distinction 22 times and two American Hockey Coaches Association Players-of-the-Year, including four-time MIAC Player-of-the-Year and four-time All-American Andrea Peterson.

Prior to coming to Gustavus, Carroll served as the head boys' hockey coach at Mankato West High School from 1991 to 1999. Carroll's college coaching resume included a stint as head men's hockey coach at Fergus Falls Community College from 1986 to 1987 as well as a season as the assistant men's coach at the University of St. Thomas in 1983.

Carroll, an Edina, Minnesota native, competed in hockey and baseball at Mankato State. After graduating with a degree in municipal recreation in 1982, Carroll played professional baseball in the Montreal Expos organization for two years.

Mike and his wife, Terri, live in Mankato and have two sons, Matt and Mike.

2015-16 Roster

Breakdown

Returners (13)

Courtney Bethune
 Diana Draayer
 Allison Eder-Zdechlik
 Katy Fuller
 Emily Gustafson
 Lindsey Hibbard
 Laura Johnson
 Kaitlyn Klein
 Allie Lewis
 Courtney Potter
 Erica Power
 Emily Reibert
 Rachel Skoglund

Newcomers (10)

Kalley Spreiter
 Marina Chapman
 Georgia Eger
 Erin Moes
 Madison Bergren
 Allie Stanger
 Laine Fischer
 Brooke Pahlen
 Paige Press
 Amanda DiNella

By Class

Seniors (3)

Allison Eder-Zdechlik
 Lindsey Hibbard
 Emily Reibert

Juniors (4)

Courtney Bethune
 Emily Gustafson
 Allie Lewis
 Courtney Potter

Sophomores (6)

Diana Draayer
 Katy Fuller
 Laura Johnson
 Kaitlyn Klein
 Erica Power
 Rachel Skoglund

First-Years (10)

Madison Bergren
 Marina Chapman
 Amanda DiNella
 Georgia Eger
 Laine Fischer
 Erin Moes
 Brooke Pahlen
 Paige Press
 Kalley Spreiter

2015-16 Numerical Roster

No.	Name	Yr.	Pos.	Hgt.	Hometown/High School
1	Lindsey Hibbard	Sr.	G	5-6	Princeton, Minn./Princeton
2	Courtney Bethune	Jr.	D	5-8	Fort Frances, Ont./Warroad
3	Emily Reibert	Sr.	F	5-5	Inver Grove Heights, Minn./South St. Paul
4	Diana Draayer	So.	F	5-5	Deephaven, Minn./Minnetonka
5	Rachel Skoglund	So.	D	5-2	Forest Lake, Minn./Forest Lake
6	Emily Gustafson	Jr.	F	5-1	Esko, Minn./Esko
7	Kalley Spreiter	Fy.	F	5-5	Litchfield, Minn./Litchfield
8	Allison Eder-Zdechlik	Sr.	F	5-4	Stillwater, Minn./Stillwater
9	Erica Power	So.	F	5-6	Lakeville, Minn./Apple Valley
10	Marina Chapman	Fy.	D	5-9	South Haven, Minn./Annandale
12	Georgia Eger	Fy.	F	5-3	Stillwater, Minn./Stillwater
14	Katy Fuller	So.	F	5-5	Minneapolis, Minn./Southwest
15	Erin Moes	Fy.	D	5-5	Hastings, Minn./Hastings
16	Madison Bergren	Fy.	F	5-6	Mahtomedi, Minn./Mahtomedi
18	Allie Stanger	Fy.	F	5-11	Paynesville, Minn./Paynesville
19	Allie Lewis	Jr.	F	5-3	Kearney, Neb./Shattuck-Saint Mary's
20	Kaitlyn Klein	So.	F	5-6	Plymouth, Minn./Wayzata
21	Laine Fischer	Fy.	D	5-8	Northfield, Minn./Northfield
22	Brooke Pahlen	Fy.	F	5-6	Lakeville, Minn./Eastview
23	Laura Johnson	So.	D	5-2	Chanhassen, Minn./Chanhassen
24	Courtney Potter	Jr.	D	5-2	Dayton, Minn./Champlin Park
33	Paige Press	Fy.	G	5-3	Cottage Grove, Minn./Park
35	Amanda DiNella	Fy.	G	5-4	Oakbrook Terrace, Ill./Willowbrook

Head Coach: Mike Carroll (17th season)

Assistant Coaches: Courtney Boucher, Steve Carroll, Pat Carroll

Alphabetical Roster/Pronunciation Guide

NO.	NAME	Pronunciation
16	Bergren, Madison	
2	Bethune, Courtney	beth-OON
10	Chapman, Marina	
35	DiNella, Amanda	
4	Draayer, Diana	DRAY-er
8	Eder-Zdechlik, Allison	ee-der-ZED-lick
12	Eger, Georgia	EGG-er
21	Fischer, Laine	
14	Fuller, Katy	
6	Gustafson, Emily	GUST-uhf-son
1	Hibbard, Lindsey	
23	Johnson, Laura	
20	Klein, Kaitlyn	Kline
19	Lewis, Allie	
15	Moes, Erin	
22	Pahlen, Brooke	PAY-len
9	Power, Erica	
24	Potter, Courtney	
35	Press, Paige	
3	Reibert, Emily	RYE-bert
5	Skoglund, Rachel	SKOHG-lund
7	Spreiter, Kalley	SPRITE-er
18	Stanger, Allie	

Player Profiles



#1 Lindsey Hibbard
Sr., Goaltender
Princeton, Minn./Princeton

Season Numbers

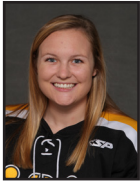
GP	GAA	Save Pct.	Record
9	2.30	.984	4-1-1



#2 Courtney Bethune
Jr., Defender
Fort Frances, Ont./Warroad

Season Numbers

GP	Goals	Assists	Points
18	0	3	3



#3 Emily Reibert
Sr., Forward
Inver Grove Heights, Minn./South St. Paul

Season Numbers

GP	Goals	Assists	Points
16	3	1	4



#4 Diana Draayer
So., Forward
Deephaven, Minn./Minnetonka

Season Numbers

GP	Goals	Assists	Points
17	5	4	9



#5 Rachel Skoglund
So., Defender
Forest Lake, Minn./Forest Lake

Season Numbers

GP	Goals	Assists	Points
17	1	0	1



#6 Emily Gustafson
Jr., Forward
Esko, Minn./Esko

Season Numbers

GP	Goals	Assists	Points
9	0	1	1



#7 Kalley Spreiter
Fy., Forward
Litchfield, Minn./Litchfield

Season Numbers

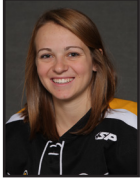
GP	Goals	Assists	Points
17	0	0	0



#8 Allison Eder-Zdechlik
Sr., Forward
Stillwater, Minn./Stillwater

Season Numbers

GP	Goals	Assists	Points
19	14	7	21



#9 Erica Power
So., Forward
Lakeville, Minn./Apple Valley

Season Numbers

GP	Goals	Assists	Points
18	8	7	15

Player Profiles



#10 Marina Chapman
 Fy., Defender
 South Haven, Minn./Annandale

Season Numbers

GP	Goals	Assists	Points
19	3	5	8



#12 Georgia Eger
 Fy., Forward
 Stillwater, Minn./Stillwater

Season Numbers

GP	Goals	Assists	Points
15	4	2	6



#14 Katy Fuller
 So., Forward
 Minneapolis, Minn./Southwest

Season Numbers

GP	Goals	Assists	Points
19	4	5	9



#15 Erin Moes
 Fy., Defender
 Hastings, Minn./Hastings

Season Numbers

GP	Goals	Assists	Points
17	5	5	10



#16 Madison Bergren
 Fy., Forward
 Mahtomedi, Minn./Mahtomedi

Season Numbers

GP	Goals	Assists	Points
19	0	2	2



#18 Allie Stanger
 Fy., Forward
 Paynesville, Minn./Paynesville

Season Numbers

GP	Goals	Assists	Points
17	0	1	1



#19 Allie Lewis
 Jr., Forward
 Kearney, Neb./Shattuck-St. Mary's

Season Numbers

GP	Goals	Assists	Points
19	0	2	2



#20 Kaitlyn Klein
 So., Forward
 Plymouth, Minn./Wayzata

Season Numbers

GP	Goals	Assists	Points
8	3	3	6



#21 Laine Fischer
 Fy., Defender
 Northfield, Minn./Northfield

Season Numbers

GP	Goals	Assists	Points
19	3	4	7

Player Profiles



#22 Brooke Pahlen
 Fr., Forward
 Lakeville, Minn./Eastview

Season Numbers

GP	Goals	Assists	Points
9	0	0	0



#23 Laura Johnson
 So., Defender
 Chanhassen, Minn./Chanhassen

Season Numbers

GP	Goals	Assists	Points
15	1	4	5



#24 Courtney Potter
 Jr., Defender
 Dayton, Minn./Champlin Park

Season Numbers

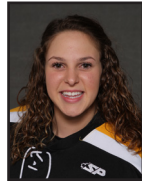
GP	Goals	Assists	Points
18	0	2	2



#33 Paige Press
 Fr., Goaltender
 Cottage Grove, Minn./Park

Season Numbers

GP	GAA	Save Pct.	Record
4	3.85	.800	0-0-0



#35 Amanda DiNella
 Fr., Goaltender
 Oakbrook Terrace, Ill./Willowbrook

Season Numbers

GP	GAA	Save Pct.	Record
14	2.58	.890	3-7-3

The Automated ScoreBook
Gustavus Adolphus Overall Team Statistics (as of Feb 04, 2016)
All games

Overall: 7-8-4 Conf: 6-3-3 Home: 5-2-0 Away: 2-4-4 Neut: 0-2-0

TEAM STATISTICS	GAC	OPP
SHOT STATISTICS		
Goals-Shot attempts	54-567	50-441
Shot pct.	.095	.113
Goals/Game	2.8	2.6
Shots/Game	29.8	23.2
Assists	58	58
POWER PLAYS		
Goals-Power Plays	15-64	12-65
Conversion Percent	.234	.185
Shot Attempts	95	104
Shot Percent	.158	.115
GOAL BREAKDOWN		
Total Goals	54	50
Power Play	15	12
Short-handed	8	3
Empty net	1	1
Penalty	0	0
Unassisted	11	10
Overtime	0	2
Shootout	0	0
Delayed Penalty	0	0
PENALTIES		
Number	71	71
Minutes	145	142
Penalties/Game	3.7	3.7
Pen minutes/Game	7.6	7.5
Minor	70	71
Major	1	0
10-minute Misconduct	0	0
Game Misconduct	0	0
Gross Misconduct	0	0
Match	0	0
SHOOTOUTS (Made-Att)	0-0	0-0
ATTENDANCE		
Total	1538	1958
Dates/Avg Per Date	7/220	10/196
Neutral Site #/Avg	2/216	

Goals by Period	1st	2nd	3rd	OT	Total
Gustavus Adolphus	12	27	15	0	54
Opponents	12	12	24	2	50

Saves by Period	1st	2nd	3rd	OT	Total
Gustavus Adolphus	137	135	110	9	391
Opponents	172	171	157	13	513

**The Automated ScoreBook
Gustavus Adolphus Category Leaders (as of Feb 04, 2016)
All games**

## Points	GP	G	A	Pts	Sh
8 A. Eder-Zdechlik	19	14	7	21	71
9 Erica Power	19	8	7	15	62
15 Erin Moes	17	5	5	10	40
4 Diana Draayer	17	5	4	9	38
14 Katy Fuller	19	4	5	9	47
10 Marina Chapman	19	3	5	8	46
21 Laine Fischer	19	3	4	7	47
12 Georgia Eger	15	4	2	6	26
20 Kaitlyn Klein	8	3	3	6	21
23 Laura Johnson	15	1	4	5	16

## Goals	GP	G	A	Pts	Sh
8 A. Eder-Zdechlik	19	14	7	21	71
9 Erica Power	19	8	7	15	62
15 Erin Moes	17	5	5	10	40
4 Diana Draayer	17	5	4	9	38
14 Katy Fuller	19	4	5	9	47
12 Georgia Eger	15	4	2	6	26
10 Marina Chapman	19	3	5	8	46
21 Laine Fischer	19	3	4	7	47
20 Kaitlyn Klein	8	3	3	6	21
3 Emily Reibert	16	3	1	4	22

## Power-Play Goals	GP	PPG
8 A. Eder-Zdechlik	19	3
3 Emily Reibert	16	2
15 Erin Moes	17	2
14 Katy Fuller	19	2

## Short-Handed Goals	GP	SHG
8 A. Eder-Zdechlik	19	4
21 Laine Fischer	19	1
4 Diana Draayer	17	1
10 Marina Chapman	19	1
9 Erica Power	19	1

## Game-Winning Goals	GP	GWG
8 A. Eder-Zdechlik	19	2
4 Diana Draayer	17	2

## Plus/Minus	GP	+/-
2 Courtney Bethune	18	+7
9 Erica Power	19	+5
4 Diana Draayer	17	+5
12 Georgia Eger	15	+4
8 A. Eder-Zdechlik	19	+3
20 Kaitlyn Klein	8	+3
15 Erin Moes	17	+2
7 Kalley Spreiter	17	+2
14 Katy Fuller	19	+1
24 Courtney Potter	18	+1

## Assists	GP	G	A	Pts	Sh
8 A. Eder-Zdechlik	19	14	7	21	71
9 Erica Power	19	8	7	15	62
15 Erin Moes	17	5	5	10	40
14 Katy Fuller	19	4	5	9	47
10 Marina Chapman	19	3	5	8	46
4 Diana Draayer	17	5	4	9	38
21 Laine Fischer	19	3	4	7	47
23 Laura Johnson	15	1	4	5	16
20 Kaitlyn Klein	8	3	3	6	21
2 Courtney Bethune	18	0	3	3	16

## Shots	GP	G	A	Pts	Sh	Sh%
8 A. Eder-Zdechlik	19	14	7	21	71	.197
9 Erica Power	19	8	7	15	62	.129
14 Katy Fuller	19	4	5	9	47	.085
21 Laine Fischer	19	3	4	7	47	.064
10 Marina Chapman	19	3	5	8	46	.065
15 Erin Moes	17	5	5	10	40	.125
4 Diana Draayer	17	5	4	9	38	.132
12 Georgia Eger	15	4	2	6	26	.154
19 Allie Lewis	19	0	2	2	24	.000
3 Emily Reibert	16	3	1	4	22	.136

## Shot Pct.	GP	G	A	Pts	Sh	Sh%
8 A. Eder-Zdechlik	19	14	7	21	71	.197
12 Georgia Eger	15	4	2	6	26	.154
20 Kaitlyn Klein	8	3	3	6	21	.143
3 Emily Reibert	16	3	1	4	22	.136
4 Diana Draayer	17	5	4	9	38	.132
9 Erica Power	19	8	7	15	62	.129
15 Erin Moes	17	5	5	10	40	.125
14 Katy Fuller	19	4	5	9	47	.085
10 Marina Chapman	19	3	5	8	46	.065
21 Laine Fischer	19	3	4	7	47	.064

## Penalties	GP	Pen	Min
14 Katy Fuller	19	8	16
23 Laura Johnson	15	7	14
10 Marina Chapman	19	7	14
4 Diana Draayer	17	6	12
15 Erin Moes	17	5	10
7 Kalley Spreiter	17	5	10
24 Courtney Potter	18	5	10
12 Georgia Eger	15	5	10
19 Allie Lewis	19	4	8
16 Madison Bergren	19	4	8

## Penalty Minutes	GP	Pen	Min
14 Katy Fuller	19	8	16
10 Marina Chapman	19	7	14
23 Laura Johnson	15	7	14
4 Diana Draayer	17	6	12
12 Georgia Eger	15	5	10
7 Kalley Spreiter	17	5	10
15 Erin Moes	17	5	10
24 Courtney Potter	18	5	10
16 Madison Bergren	19	4	8
19 Allie Lewis	19	4	8

**The Automated ScoreBook
Gustavus Adolphus Combined Team Statistics (as of Feb 04, 2016)
All games**

Date	Opponent		Score	Att.
Nov 03	at UW-Superior	Tot	2-2	123
Nov 06	ST. OLAF	W	4-1	257
* Nov 13	#4 UST-WOM	W	6-4	247
* Nov 14	at UST-WOM	L	3-5	200
* 11/20/15	at Augsburg College	Tot	2-2	201
* Nov 21	AUGSBURG COLLEGE	W	4-1	378
Nov 28	vs #2 Elmira	L	1-2	212
Nov 29	vs #1 Plattsburgh	L	3-5	219
* Dec 04	at Saint Benedict	Tot	2-2	257
* Dec 05	SAINT BENEDICT	Lot	2-3	165
Dec 09	at #8 UW-River Falls	L	2-4	168
Dec 11	#8 UW-RIVER FALLS	Lot	1-2	228
Jan 08	at UW-Stevens Point	L	0-4	118
* Jan 16	ST. CATHERINE UNIV.	W	3-0	111
* Jan 15	at St. Catherine Univ.	Tot	1-1	145
* Jan 22	ST. OLAF	W	4-3	152
* Jan 23	at St. Olaf	W	5-0	156
* Jan 29	at Concordia-M'head	W	4-3	289
* Jan 30	at Concordia-M'head	L	5-6	301

TEAM STATISTICS	GAC	OPP
SHOT STATISTICS		
Goals-Shot attempts	54-567	50-441
Shot pct.	.095	.113
Goals/Game	2.8	2.6
Shots/Game	29.8	23.2
POWER PLAYS		
Goals-Power Plays	15-64	12-65
Conversion Percent	.234	.185
Shot Attempts	95	104
Shot Percent	.158	.115
GOAL BREAKDOWN		
Power Play	15	12
Short-handed	8	3
Empty net	1	1
Penalty	0	0
Unassisted	11	10
Overtime	0	2
Shootout	0	0
Delayed Penalty	0	0
PENALTIES		
Number	71	71
Minutes	145	142
Penalties/Game	3.7	3.7
Pen minutes/Game	7.6	7.5
SHOOTOUTS (Made-Att)	0-0	0-0

Record:	Overall	Home	Away	Neutral
ALL GAMES	7-8-4	5-2-0	2-4-4	0-2-0
CONFERENCE	6-3-3	4-1-0	2-2-3	0-0-0
NON-CONFERENCE	1-5-1	1-1-0	0-2-1	0-2-0

##	Player	gp	g	a	pts	sh	sh%	pen-min	pp	sh
8	A. Eder-Zdechlik	19	14	7	21	71	.197	2-4	3	4
9	Erica Power	19	8	7	15	62	.129	1-5	1	1
15	Erin Moes	17	5	5	10	40	.125	5-10	2	0
4	Diana Draayer	17	5	4	9	38	.132	6-12	1	1
14	Katy Fuller	19	4	5	9	47	.085	8-16	2	0
10	Marina Chapman	19	3	5	8	46	.065	7-14	1	1
21	Laine Fischer	19	3	4	7	47	.064	3-6	0	1
12	Georgia Eger	15	4	2	6	26	.154	5-10	1	0
20	Kaitlyn Klein	8	3	3	6	21	.143	1-2	1	0
23	Laura Johnson	15	1	4	5	16	.062	7-14	1	0
3	Emily Reibert	16	3	1	4	22	.136	0-0	2	0
2	Courtney Bethune	18	0	3	3	16	.000	0-0	0	0
16	Madison Bergren	19	0	2	2	18	.000	4-8	0	0
19	Allie Lewis	19	0	2	2	24	.000	4-8	0	0
24	Courtney Potter	18	0	2	2	17	.000	5-10	0	0
5	Rachel Skoglund	17	1	0	1	19	.053	1-2	0	0
6	Emily Gustafson	9	0	1	1	10	.000	2-4	0	0
18	Allie Stanger	17	0	1	1	12	.000	1-2	0	0
22	Brooke Pahlen	9	0	0	0	2	.000	1-2	0	0
7	Kalley Spreiter	17	0	0	0	13	.000	5-10	0	0
TM	TEAM	3	0	0	0	0	.000	3-6	0	0
Total		19	54	58	112	567	.095	71-145	15	8
Opponents		19	50	58	108	441	.113	71-142	12	3

##	Goalie	gp	min	ga	gaavg	saves	save%	w-l-t
1	Lindsey Hibbard	9	391:35	15	2.30	127	.894	3-1-1
35	Amanda DiNella	14	722:16	31	2.58	252	.890	3-7-3
33	Paige Press	4	46:43	3	3.85	12	.800	0-0-0
TM	EMPTY NET	3	4:58	1	-	0	.000	0-0-0
Total		19	1165:32	50	2.57	391	.887	6-8-4
Opponents		19	1165:32	54	2.78	513	.905	8-6-4

Attendance Summary	GAC	Opponent
Total	1538	1958
Dates/Avg Per Date	7/220	10/196
Neutral Site #/Avg	2/216	

Goals by Period	1st	2nd	3rd	OT	Total
Gustavus Adolphus	12	27	15	0	54
Opponents	12	12	24	2	50

Saves by Period	1st	2nd	3rd	OT	Total
Gustavus Adolphus	137	135	110	9	391
Opponents	172	171	157	13	513

**The Automated ScoreBook
Gustavus Adolphus Game Results (as of Feb 04, 2016)
All games**

Date	Opponent		Score	Shots	Overall	Conf	Time	Att.	Goalie of record
Nov 03	at UW-Superior	Tot	2-2	40/29	0-0-1	0-0-0	2:15h	123	Lindsey Hibbard
Nov 06	ST. OLAF	W	4-1	36/25	1-0-1	0-0-0	2:00	257	Amanda DiNella
* Nov 13	#4 UST-WOM	W	6-4	20/26	2-0-1	1-0-0	2:28	247	Lindsey Hibbard
* Nov 14	at UST-WOM	L	3-5	19/34	2-1-1	1-1-0	1:55	200	Amanda DiNella
* 11/20/15	at Augsburg College	Tot	2-2	31/27	2-1-2	1-1-1	2:03	201	Amanda DiNella
* Nov 21	AUGSBURG COLLEGE	W	4-1	31/22	3-1-2	2-1-1	1:51	378	Amanda DiNella
Nov 28	vs #2 Elmira	L	1-2	24/19	3-2-2	2-1-1	1:55	212	Amanda DiNella
Nov 29	vs #1 Plattsburgh	L	3-5	22/39	3-3-2	2-1-1	2:20	219	Amanda DiNella
* Dec 04	at Saint Benedict	Tot	2-2	39/21	3-3-3	2-1-2	2:00	257	Amanda DiNella
* Dec 05	SAINT BENEDICT	Lot	2-3	40/14	3-4-3	2-2-2	2:02	165	Lindsey Hibbard
Dec 09	at #8 UW-River Falls	L	2-4	22/27	3-5-3	2-2-2	1:50	168	Amanda DiNella
Dec 11	#8 UW-RIVER FALLS	Lot	1-2	18/23	3-6-3	2-2-2	2:02	228	Amanda DiNella
Jan 08	at UW-Stevens Point	L	0-4	26/21	3-7-3	2-2-2	1:48	118	Amanda DiNella
* Jan 16	ST. CATHERINE UNIV.	W	3-0	33/15	4-7-3	3-2-2	2:00	111	Amanda DiNella
* Jan 15	at St. Catherine Univ.	Tot	1-1	42/21	4-7-4	3-2-3	1:58	145	Amanda DiNella
* Jan 22	ST. OLAF	W	4-3	36/18	5-7-4	4-2-3	2:05	152	Lindsey Hibbard
* Jan 23	at St. Olaf	W	5-0	33/12	6-7-4	5-2-3	2:09	156	None
* Jan 29	at Concordia-M'head	W	4-3	26/22	7-7-4	6-2-3	2:00	289	Lindsey Hibbard
* Jan 30	at Concordia-M'head	L	5-6	29/26	7-8-4	6-3-3	1:55	301	Amanda DiNella

Team Record	W-L-T	Attendance	Dates	Total	Avg.
Overall:	7-8-4	Total:	19	3927	207
Conference:	6-3-3	Home:	7	1538	220
Home:	5-2-0	Away:	10	1958	196
Away:	2-4-4	Neutral:	2	431	216
Neutral:	0-2-0				
Overtime:	0-2-4				