



2015-16 Gustavus Adolphus College Women's Hockey Game Notes

Gustavus Sports Information

800 W College Ave, St. Peter, MN 56082
 gustavus.edu/athletics
 (507) 933-7647 • sportsinfo@gustavus.edu

Women's Hockey Media Contact
 Nick Hoelmer, Asst. Sports Information Director
 (507) 933-8411 • rhoelmer@gustavus.edu

Follow Gustavus Athletics Online

Twitter
 @GustieAthletics

Flickr
 flickr.com/photos/gogusties

Facebook
 facebook.com/GustieAthletics

YouTube
 youtube.com/gustavusathletics

Snap Chat
 Username: Gusties

Instagram
 @gustieathletics

2015-16 SCHEDULE

DATE	OPPONENT	TIME/RESULT
NOVEMBER		
3	UW-Superior	T 2-2
6	ST. OLAF COLLEGE (Non-Conference)	W 4-1
13	NO. 4 UNIVERSITY OF ST. THOMAS	W 6-4
14	No. 4 University of St. Thomas	L 3-5
20	Augsburg College	T 2-2
21	AUGSBURG COLLEGE	W 4-2
28	No. 2 Elmira College (Panther Classic)	L 1-2
29	No. 1 Plattsburgh State (Panther Classic)	L 3-5
DECEMBER		
4	College of Saint Benedict	T 2-2
5	COLLEGE OF SAINT BENEDICT	L 2-3
9	No. 8 UW-River Falls	L 2-4
11	NO. 8 UW-RIVER FALLS	L 1-2
JANUARY		
8	UW-Stevens Point	L 0-4
15	St. Catherine University	T 1-1
16	ST. CATHERINE UNIVERSITY	W 3-0
22	ST. OLAF COLLEGE	W 4-3
23	St. Olaf College	W 5-0
29	Concordia College	W 4-3
30	Concordia College	L 5-6
FEBRUARY		
5	Saint Mary's University	W 3-2
6	SAINT MARY'S UNIVERSITY	L 0-2
12	Bethel University	L 1-3
13	BETHEL UNIVERSITY	L 2-3
19	Hamline University	7 p.m.
20	HAMLIN UNIVERSITY	2 P.M.

HOME GAMES IN BOLD AND CAPS



Gustavus Adolphus College

Golden Gusties
 (8-11-4 Overall, 7-6-3 MIAC)

vs.

Hamline University

Pipers
 (9-12-2 Overall, 6-9-1 MIAC)



Game 24

Date: Friday, February 19 • **Time:** 7 p.m. **Location:** St. Paul, Minn.

Arena: Oscar Johnson Arena

Live Video: <http://portal.stretchinternet.com/hamline/>

Live Stats: <http://portal.stretchinternet.com/hamline/>

Game 25

Date: Saturday, February 13 • **Time:** 2 p.m. **Location:** St. Peter, Minn.

Arena: Don Roberts Ice Rink

Live Video: <http://portal.stretchinternet.com/gac/>

Live Stats: <https://gustavus.edu/athletics/whky/LIVE/xlive.htm>

Setting The Scene: With a playoff berth on the line, the Gustavus Adolphus College women's hockey team is set to compete in its final regular season series this weekend against Hamline University. The Gusties travel to Oscar Johnson Arena in St. Paul on Friday for a 7 p.m. game with the Pipers, and host Saturday's regular season finale at Don Roberts Ice Rink at 2 p.m. Gustavus enters the series at 7-6-3 in the MIAC, while Hamline comes in at 6-9-1 in the league.

The Playoff Picture: Gustavus enters its series with Hamline in the rare situation of being on the outside of the playoff picture looking in and needs help in order to secure a berth. However, just one point separates the Gusties and Saint Mary's University which currently sits in the fifth and final playoff spot. Here's a look at possible situations over the weekend and what needs to happen for the Black and Gold to clinch its 17th straight MIAC Playoff berth:

-If Saint Mary's sweeps: Gustavus eliminated from playoff contention

-If Saint Mary's wins one and ties one: Gustavus must sweep Hamline to earn playoff berth

-If Saint Mary's wins one and loses one: Gustavus must sweep Hamline to earn playoff berth

-If Saint Mary's ties both: Gustavus needs one win and a tie or win to earn playoff berth

-If Saint Mary's ties one and loses one: Gustavus needs one win to earn playoff berth

-If Saint Mary's is swept: Gustavus needs one win to earn playoff berth

The Gusties could also potentially get help from Augsburg, but only if the Auggies are swept by the College of Saint Benedict. If Augsburg is swept, Gustavus needs at least one win and one tie to bypass the Auggies.

Last Time Out: Gustavus is most recently coming off being swept by Bethel University. In Friday's 3-1 loss, neither team scored in the first frame, which led to a busy second period of scoring. Bethel got the puck rolling, with Hadley Cookson scoring an unassisted shorthanded goal at 7:16 to give Bethel a 1-0 lead. However, Gustavus was quick to answer, as Allison Eder-Zdechlik (Sr., Stillwater, Minn.) continued her goal-scoring tear by putting home her 15th goal of the season at 11:51 to tie the score at 1-1. Then, with 2:13 remaining in the second, the Royals' Briita Nelson put her squad back ahead off assists from Natalie Simons and Erin Harper. As it has done for several periods this season, Gustavus butshot its opposition in the third period, taking 13 shots compared to Bethel's eight. However, the Gusties couldn't find the back of the net and the Royals' Wendy Roberts took advantage of an empty Gustavus net with seven seconds to play to seal the home squad's victory.

On Saturday, Gustavus set the tone for scoring with Erica Power (So., Lakeville, Minn.) rebounding a shot from Emily Reibert (Sr., Inver Grove Heights, Minn.) and getting it into the net after 46 seconds of play in the first period. Bethel was unable to answer the Gustavus goal until early in the second period when Sarina Goos scored on the power play. Gustavus regained the lead shortly after with a goal by Laine Fisher (Fy., Northfield, Minn.), her fourth of the season. Later in the second period, Bethel's Caroline Kivisto took advantage of the power play to tie the game 2-2. The Royals took the lead after 4:26 in the third period with a goal by Lauren Kolak. The Gusties were unable to get a shot in the net during the third period.

Hamline is coming off a series split with St. Catherine this past weekend. The Pipers couldn't find the net in Friday's 1-0 loss at Oscar Johnson, but rebounded Saturday with a 2-1 win at Drake Arena. In that game, Jaci Reinke wasted little time ending Hamline's three-game scoring drought. Her unassisted goal 19 seconds in stood up until the Wildcats tied the game late in the second period. At 10:18 of the third, Reinke tied the game, finishing off a three-way play with Brede Postier and Melanie Bartenstein. Piper goalie Jessica Cole took it from there, recording 19 saves for the win.

13 MIAC Championships • 11 NCAA Tournament Appearances

The Match Up Statistical Comparison

Gustavus		Hamline
2.61 (3rd)	Goals For	1.83 (7th)
2.61 (8th)	Goals Against	2.57 (7th)
19.8% (2nd)	Power Play	15.0% (4th)
79.5% (10th)	Penalty Kill	80.4% (8th)
+3 (2nd)	Special Teams Net	-7 (8th)
7.0 (4th)	Penalty Minutes	10.0 (10th)

2015-16 season averages with MIAC ranks (10 teams)

The Series Gustavus vs. Hamline

Coach Mike Carroll

Overall Record at Gustavus vs. Hamline 358-94-31 32-0-0

All-Time Record 32-0-0

Last Meeting W 4-0

Current Streak W 32

Last Five Seasons 10-0-0

Date	Location	Result
Nov. 22, 2013	St. Peter	W 4-0
Nov. 21, 2013	St. Paul	W 6-3
Feb. 2, 2013	St. Paul	W 2-0
Feb. 1, 2013	St. Peter	W 3-1
Feb. 4, 2012	St. Peter	W 2-1
Feb. 3, 2012	St. Paul	W 3-2
Feb. 12, 2011	St. Paul	W 2-1
Feb. 11, 2011	St. Peter	W 2-1
Feb. 13, 2010	St. Peter	W 3-1
Feb. 12, 2010	St. Paul	W 5-1

Series Snapshot: This weekend's series with Hamline marks the 33rd and 34th meetings between the Gusties and Pipers in women's hockey. If history holds true, the Gusties have a good chance to clinch a playoff berth, as they are 32-0-0 against the Pipers all-time. In last season's series, the Gusties earned 6-3 and 4-0 wins on Nov. 21 and 22, respectively.

About The Pipers: Hamline has been eliminated from playoff contention, and sits in seventh place behind Gustavus with 13 points and a conference record of 6-9-1.

The Pipers are led by forwards Sjena Kosley, Brede Postier, and Chelsea Koehn with each having tallied double digit points this season. Kosley has 12 points off five goals and seven assists, Postier has 11 points on five goals and six assists, and Koehn has notched 10 points on four goals and six assists. Jessica Cole leads Hamline between the pipes. The Piper's primary netminder is 8-8-1 on the season after posting a .923 save percentage and 2.12 goals against average.

Hamline is seventh in the league in both goals scored and goals allowed, and has been sent to the penalty box a league-worst 10 minutes per game.

+/-: Courtney Bethune leads the Gusties in plus/minus this season, as she has tallied a +/- of +8 to this point. Behind Bethune sit Erica Power, Diana Draayer, Kalley Spreiter, and Georgia Eger who each have notched a +4.

Comes Down To Power Play: This weekend's series could come down to how each team competes on the player advantage. So far this season, both the Gusties (19.8-2nd) and Pipers (15.0-4th) are in the top-five in the league in power play percentage. However, each give up their fair share of power play goals as well, as Gustavus is only 79.5 percent on the penalty kill (last in league) compared to Hamline's 80.4 percent (8th). The Pipers do commit more penalties, as they average a league-worst 10 minutes in the sin bin.

Gustavus Embarks On 19th Season Of Women's Hockey: The Gustavus women's hockey team is currently in its 19th season. Founded in 1997, the Gusties have attained an all-time record of 394-113-32, which stands as the second winningest program in all of NCAA Division III women's hockey. The Gustie women have won 13 MIAC titles in the 18 years of women's hockey in the conference. Those 14 titles rank first in front of St. Thomas (3), and Augsburg and Saint Mary's, who each have two. Gustavus has also earned the MIAC Playoff crown a total of 11 times, 10 of which have come in the past 12 years and led to 11 NCAA Tournament appearances.

Wearing The "C": In the 18-year history of the Gustavus women's hockey program, 36 players have earned the honor of being a captain. This year, three new players earn that title in senior Allison Eder-Zdechlik, junior Allie Lewis, and sophomore Diana Draayer.

Home Grown Talent: Of the 23 players on this year's roster, 20 are natives of Minnesota. The only players who reside outside the State of Hockey are Courtney Bethune, who hails from Fort Frances, Ontario, Allie Lewis, who is a native of Kearney, Nebraska, and Amanda DiNella from Oakbrook Terrace, Illinois.

Scorers Return: Despite losing two of its top four scorers from its 2014-15 squad, Gustavus will return 62 percent of its scoring from last season, including sophomore Erica Power who led last year's squad with 27 points (9G, 18A) and Allison Eder-Zdechlik who finished tied for second on the team with 20 points (9G, 11A).

A Balanced Approach: Thirteen of the Gusties' 23 players in 2015-16 are returners, and the Gusties also welcome back three of their five All-MIAC selections. However, the Gusties also welcome in 10 first-years, including five forwards, three defenders, and two goalies.



Gustavus Quick Facts

Location: St. Peter, Minnesota
Address: 800 West College Ave.
 St. Peter, MN 56082
Founded: 1862
Enrollment: 2,456
Nickname: Golden Gusties
School Colors: Black and Gold
Home Ice: Don Roberts Ice Rink
NCAA Affiliation: NCAA Division III
Conference: Minnesota Intercollegiate Athletic
President: Rebecca M. Bergman
Athletic Director: Tom Brown
Assistant Athletic Director: Jared Phillips
Athletic Trainer: Troy Banse
Equipment Manager: Jed Friedrich
Sports Information Director: CJ Siewert
Asst. Sports Information Director: Nick Hoelmer

Gustavus Hockey Quick Facts

2014-15 Record: 19-5-2
2014-15 MIAC Record/Finish: 15-2-1 / 1st
All-Time Record: 394-113-32
All-Time MIAC Record: 263-36-15
MIAC Championships: 13
Returners/First-years: 13/10
All-MIAC Honorees Returning/Lost: 3/2

Gustavus Under Head Coach Mike Carroll

Year	Overall	MIAC	Conference Finish
1999-00	18-10-1	12-5-1	3rd
2000-01	23-6-1	16-2-0	1st
2001-02	23-5-2	18-0-1	1st
2002-03	14-9-4	11-4-3	3rd
2003-04	22-6-0	16-2-0	2nd
2004-05	25-4-1	17-1-0	1st
2005-06	22-5-2	17-0-1	1st
2006-07	25-3-0	17-1-0	1st
2007-08	25-3-0	18-0-0	1st
2008-09	22-2-4	16-0-2	1st
2009-10	26-6-2	14-3-1	1st
2010-11	22-5-3	14-2-2	1st
2011-12	24-4-2	16-1-1	1st
2012-13	27-2-1	18-0-0	1st
2013-14	17-8-2	14-4-0	2nd
2014-15	19-5-2	15-2-1	1st
2015-16	8-11-4	7-6-3	--
Totals	358-94-31	256-33-16	12 MIAC Titles

Around The League

MIAC Standings

School	Points	MIAC	Overall
St. Thomas ^	23	11-4-1	17-5-1
Concordia ^	22	11-5	13-9-1
Bethel ^	22	10-4-2	12-9-2
Augsburg	20	9-5-2	12-9-2
Saint Mary's	18	8-6-2	9-11-3
Gustavus	17	7-6-3	8-11-4
Hamline	13	6-9-1	9-12-2
Saint Benedict	12	5-9-2	7-14-2
St. Catherine	10	4-10-2	5-13-5
St. Olaf	3	1-14-1	2-20-1

This Weekend in the MIAC

Friday, February 19

Gustavus at Hamline | 7 p.m.
 Concordia at Bethel | 7 p.m.
 St. Catherine at Saint Mary's | 7 p.m.
 St. Olaf at St. Thomas | 7:30 p.m.
 Augsburg at Saint Benedict | 7:30 p.m.

Saturday, February 20

Hamline at Gustavus | 2 p.m.
 Concordia at Bethel | 2 p.m.
 St. Thomas at St. Olaf | 2 p.m.
 Saint Mary's at St. Catherine | 2 p.m.
 Saint Benedict at Augsburg | 4 p.m.

MIAC Athlete-of-the-Week



Tori Davis
 So, Forward
 Sabin, Minn./Moorhead

Opponent	G	A	P
at St. Olaf	1	2	3
at St. Olaf	3	0	3
Totals	4	2	6

USCHO.com Div. III Poll

Rank	School	Overall	Points	Last
1	Plattsburgh (14)	23-1-0	148	1
2	Adrian (1)	20-2-1	131	2
3	Elmira	19-3-1	114	3
4	Lake Forest	20-1-2	109	4
5	Amherst	18-1-3	93	5
6	Wisconsin-River Falls	17-5-1	70	6
7	Middlebury	15-4-3	58	7
8	Norwich	17-6-0	42	8
9	St. Thomas	16-5-1	38	9
10	Utica	16-6-1	15	NR



Gustavus Record When:

At home	5-4-0
On the road	3-5-4
Neutral Site	0-2-0
vs. MIAC opponents	7-6-3
vs. Non-conference opponents	1-5-1
vs. Top 10 opponents	1-5-0
GAC scores 4 or more goals	6-1-0
GAC scores 3 goals	2-2-0
GAC scores 2 or fewer goals	0-5-5
GAC scores first	7-2-2
Opponent scores first	1-9-2
GAC leads after 1st period	4-1-1
Opponent leads after 1st period	1-3-1
Tied after 1st period	2-6-2
GAC leads after 2nd period	7-2-1
Opponent leads after 2nd period	0-7-0
Tied after 2nd period	1-2-2
In overtime	0-2-3
Games decided by one goal	3-6-0
Games decided by two goals	1-4-0
Games decided by three goals	3-0-0
Games decided by four or more	1-1-0
GAC scores on the power play	8-5-2
GAC scoreless on the power play	0-7-1
GAC scores two or more PP goals	1-0-2
GAC outshoots opponent	7-7-4
GAC outshot by opponent	1-4-0
Shots equal	0-0-0
Tuesday Games	0-0-1
Wednesday Games	0-1-0
Friday Games	5-4-3
Saturday Games	3-6-0
Sunday Games	0-1-0
In November	3-3-2
In December	0-3-1
In January	4-2-1
In February	1-3-0
In March	0-0-0
Following a win	5-4-0
Following a loss	0-6-3
Following a tie	3-1-0
Night games	5-6-4
Day games	3-5-0

Who's Hot

Scoring vs. Bethel

Player	Games	Goals	Assists	Points	Point Streak
Allison Eder-Zdechlik	2	1	0	1	--
Erica Power	2	1	0	1	1
Laine Fischer	2	1	0	1	1

Goaltending vs. Bethel

Player	Record	Minutes	GA	Saves	Scoreless Str.
Amanda DiNella	0-2-0	117:49	5	27	15:34

2015-16 Season By The Numbers

Largest Victory	5: vs. St. Olaf (1/23/16)
Largest Defeat	4: at UW-Stevens Point (1/8/16)
Largest First Period Lead	2: vs. Augsburg (11/21/15)
Largest First Period Deficit	2 (2x) Last: vs. St. Olaf (1/22/16)
Largest Second Period Lead	4: vs. St. Thomas (11/13/15)
Largest Second Period Deficit	4: at No. 7 UW-River Falls (12/9/15)
Most Goals Scored	6: vs. St. Thomas (11/13/15)
Fewest Goals Scored	0 (2x): Last vs. Saint Mary's (2/13/16)
Most Goals Allowed	6: at Concordia (1/30/16)
Fewest Goals Allowed	0 (2x) Last: vs. St. Olaf (1/23/16)
Largest Lead	5: vs. St. Olaf (1/23/16)
Largest Lead On Road	5: vs. St. Olaf (1/23/16)
Largest Lead At Home	4: vs. St. Thomas (11/13/15)
Largest Blown Lead	2: vs. No. 1 Plattsburgh (11/29/15)
Largest Deficit	4: at UW-Stevens Point (1/8/16)
Largest Deficit On Road	4: at UW-Stevens Point (1/8/16)
Largest Deficit At Home	2 (2x): Last vs. Saint Mary's (2/13/16)
Largest Comeback-Win/Tie	2 vs. St. Olaf (W4-3) (1/22/16)



Last Time It Happened

COMEBACKS

GAC won when trailing after two periods

December 13, 2014 vs. UW-Stevens Point. Trailed 1-0 early in the third, Gustavus scored three consecutive goals to capture a 3-1 victory.

Opponent won when trailing after two periods

Dec. 5, 2015 vs. Saint Benedict. Gustavus led CSB 2-1 going into third period, but Blazers scored once in third and once in overtime to earn 3-2 victory

Overcame 1-goal deficit and won

GAC: January 22, 2016 vs. St. Olaf College. Trailed 3-1 after the first, Gustavus won 4-3.
OPP: Dec. 5, 2015 vs. Saint Benedict. Gustavus led 2-1 after second, Saint Ben's won 3-2

Overcame 2-goal deficit and won

GAC: January 22, 2016 vs. St. Olaf College. Trailed 3-1 after the first, Gustavus won 4-3.
OPP: Nov. 29, 2015 vs. No. 1 Plattsburgh State. Gustavus led Plattsburgh 3-1 going into third period, but Cardinals scored four goals in third period to earn 5-3 win.

Overcame a 3-goal deficit and won

GAC: March 1, 1998 vs. University of Minnesota Club. Gusties scored one in the second and three in the third to win 4-3.

OPP: Never

OVERTIME GAMES

Won overtime game

GAC: March 1, 2012 vs Bethel. Courtney Boucher scored 6:25 in to overtime to win 1-0 and advance to the MIAC Championship.

OPP: Dec. 5, 2015 vs. Saint Benedict

Tied overtime game

Jan 15, 2016 at St. Catherine

SERIES SWEEPS

Swept a 2-game regular season home-home series

GAC: Jan. 22 and 23, 2016 vs. St. Olaf. (4-3 Friday in St. Peter, 5-0 Saturday in Northfield)
OPP: Feb. 12-13 vs. Bethel. (3-1 Friday night in Blaine, 3-2 on Saturday in St. Peter)

Swept a 2-game regular season home series

GAC: Nov. 14-15, 2014 vs. Concordia. (3-1, 2-0)

OPP: Never

Swept a 2-game regular season away series

GAC: Nov. 15-16, 2013 at Concordia. (4-1, 2-0)

OPP: Never. (MIAC Playoffs: March 10-11, 2000 at Augsburg. (4-1, 2-1)

SHUTOUTS

Last Shutout

GAC: Jan. 23, 2016 at St. Olaf, 5-0

OPP: Feb. 13, 2016 vs. Saint Mary's, 2-0

Last Home Shutout

GAC: Jan 16, 2016 vs. St. Catherine, 3-0

OPP: Feb. 13, 2016 vs. Saint Mary's, 2-0

Last Road Shutout

GAC: Jan. 23, 2016 at St. Olaf, 5-0

OPP: Jan. 8, 2016 at UW-Stevens Point, 4-0

Scoreless Ties (2 in program history)

Jan. 14, 2010 vs. Trinity (Conn.)

Feb. 17, 2009 at UW-Stevens Point

EXTRA ATTACKER GOALS

Scored an extra attacker goal

GAC: Jan. 29, 2016 at Concordia. Erica Power scored w/ 38 sec. left. Concordia won 6-5.

OPP: Dec. 5, 2015 (Saint Benedict) CSB won 3-2.

SHORTHANDED GOALS

Scored a shorthanded goal

GAC: Jan 29, 2016 at Concordia. Erica Power scored shorthanded goal in third period to put Gustavus up 4-2.

OPP: Jan. 22, 2016 at Gustavus. Jane Vezina scored shorthanded in the first period of a 4-3 win for the Gusties.

Scored two shorthanded goals

GAC: Nov. 22, 2008 at St. Olaf. Melissa Mackley scored two short-handed goals in the third period. Gusties won 4-2.

OPP: Never

EMPTY NET GOALS

Scored an empty net goal

GAC: Nov. 21, 2015 vs. Augsburg. Allison Eder-Zdechlik scored EN at 18:58 in 4-1 win for the Gusties in St. Peter.

OPP: Feb. 12, 2016 at Bethel. Bethel won 3-1.

TEAM GOALS IN A PERIOD

Team scored 5 or more goals in a period

GAC: Feb. 23, 2013 vs. Saint Benedict. The Gusties scored six goals in the second period on their way to an 8-2 victory in St. Peter.

OPP: Dec. 3, 1998 at the University of Minnesota (Mariucci Arena. Gophers scored five goals in the first period and won 8-1.

PENALTY SHOTS

Scored on a penalty shot

GAC: Never.

OPP: March 19, 2011 vs. Middlebury (NCAA 3rd Place Game, Rochester, N.Y.). Penalty shot goal scored after Lindsey Hjelm checking penalty in the second period. Middlebury won 5-0.

PENALTIES

Not penalized

GAC: Jan. 8, 2016 at UW-Stevens Point. Gustavus lost 4-0.

OPP: Dec. 2, 2000 at St. Catherine. St. Kate's won 4-3.

Neither team was penalized

Jan. 30, 1998 at Saint Mary's. Gusties won 6-2.

HAT TRICKS

Last individual 3-goal game

GAC: Nov. 21, 2015 vs. Augsburg. Allison Eder-Zdechlik scored three goals (one even, one shorthanded, one empty net) in a 4-1 Gustavus win in St. Peter.

OPP: Jan. 22, 2016 vs. St. Olaf. Jane Vezina scored three times in 4-3 Gustie win.

Last individual 4-goal game

GAC: Dec. 2, 2011 at Augsburg. Allie Schwab scored three PP goals and an even goal in a 9-0 shutout.

OPP: Never.

All goals scored by one player (3+ Goals)

GAC: Never.

OPP: Dec. 2, 2006 at Hamline. Melanie Levielle scored all three goals in a 4-3 loss.

SHOTS ON GOAL

Fewer than 15 shots in a game

GAC: Dec. 3, 1998 at the University of Minnesota, 11 shots. Minnesota won 8-1.

OPP: Feb. 13, 2016 vs. Bethel, 13 shots. Bethel won 3-2.

Fewer than 20 shots in a game

GAC: DEC. 11, 2015 VS. UW-RIVER FALLS, 18 shots. Gustavus lost 2-1.

OPP: Feb. 13, 2016 vs. Bethel, 13 shots. Bethel won 3-2.

40 or more shots in a game

GAC: Feb. 13, 2016 vs. Bethel, 41 shots. Bethel won 3-2.

OPP: Nov. 29, 2014 at Plattsburgh, 42 shots. Tied 4-4.

50 or more shots in a game

GAC: Feb. 16, 2013 vs. St. Olaf, 51 shots. Gustavus won 6-2.

OPP: Nov. 23, 1998 vs. the University of Minnesota: 51 shots. Minnesota won 6-0.

60 or more shots in a game

GAC: Feb. 15, 2013 at St. Olaf, 61 shots. Gustavus won 7-4.

OPP: Feb. 5, 1998 at Boston College, 65 shots. BC won 10-1.

SINGLE GAME POINTS

Player had four points in a game

GAC: Nov. 13, 2014 vs. St. Thomas. Diana Draayer scored three goals, one assist in 6-4 win over St. Thomas.

OPP: Mar. 18, 2011 vs. Norwich (NCAA Semifinals). Julie Fortier scored three goals with an assist in a 5-4 Norwich victory.

Player had five points in a game

GAC: Dec. 2, 2011 at Augsburg. Allie Schwab scored three PP goals and an even goal with an assist in a 9-0 shutout.

OPP: Mar. 18, 2005 vs. Middlebury. (NCAA Semifinals) Lorna Griffis scored two goals with three assists in a 7-3 Middlebury win.

Player had six or more points in a game

GAC: Feb. 11, 2005 at St. Catherine. Andrea Peterson scored two goals with six assists in a 13-0 win. (Most individual points in a game in program history)

OPP: Jan. 30, 1999 at Middlebury. Michelle Labbe scored three goals with three assists in a 8-0 Middlebury win.



Carroll At A Glance

Hometown

- Edina, Minnesota

Education

- Bachelor's Degree: Recreation, Parks, and Leisure Services (Minnesota State, Mankato '82)

Family

- Wife: Terri
- Children: Matt and Mike

Coaching

- 1983-84 – Assistant Coach, University of St. Thomas
- 1984-85 – Assistant Coach, Fergus Falls High School
- 1986-87 – Head Coach, Fergus Falls Community College
- 1990-99 – Head Coach, Mankato West High School
- 1999-Present – Head Coach, Gustavus Adolphus College

Years At Gustavus: 16

All-time Record: 358-94-31

All-time MIAC Record: 256-33-16

MIAC Titles: 12

MIAC Playoff Titles: 11

NCAA Tournaments: 11

NCAA Tournament Record: 8-16-0

Final Fours: 7

Most Wins In A Season: 27 (2012-13)

Fewest Wins In A Season: 14 (2002-03)

*** All-time winningest coach in Gustavus women's hockey history.

Head Coach Mike Carroll

Mike Carroll is in his 17th season as the women's head hockey coach at Gustavus. Within his tenure behind the Gustie bench, Carroll has turned Gustavus women's hockey into one of the most successful programs in NCAA Division III. He has compiled an overall record of 358-94-31 in 16 seasons and has the most coaching victories in the history of the program.

Last season, the Gustavus women's hockey team regained its spot atop of the MIAC standings, finishing first in the final conference standings with 32 points at 15-2-1. However, the Gusties suffered a 6-3 loss to Bethel University in the MIAC Playoff Semifinals, which brought their season to an end and the team finished with an overall record of 19-5-2.

Carroll has directed the Gusties to 12 MIAC regular season titles (2000-01, 2001-02, 2004-05, 2005-06, 2006-07, 2007-08, 2008-09, 2009-10, 2010-11, 2011-12, 2012-13) and has been named the MIAC Coach-of-the-Year six times (2001-02, 2003-04, 2004-05, 2005-06, 2010-11, 2012-13, 2014-15). In addition to coaching 37 players who have earned All-Conference honors 64 times, he has coached five MIAC Players-of-the-Year in Sarah Garrison, Andrea Peterson, Stefanie Ubl, Allie Schwab, Lindsey Hjelm. Carroll has also worked with 14 players who have earned All-America distinction 22 times and two American Hockey Coaches Association Players-of-the-Year, including four-time MIAC Player-of-the-Year and four-time All-American Andrea Peterson.

Prior to coming to Gustavus, Carroll served as the head boys' hockey coach at Mankato West High School from 1991 to 1999. Carroll's college coaching resume included a stint as head men's hockey coach at Fergus Falls Community College from 1986 to 1987 as well as a season as the assistant men's coach at the University of St. Thomas in 1983.

Carroll, an Edina, Minnesota native, competed in hockey and baseball at Mankato State. After graduating with a degree in municipal recreation in 1982, Carroll played professional baseball in the Montreal Expos organization for two years.

Mike and his wife, Terri, live in Mankato and have two sons, Matt and Mike.

2015-16 Roster Breakdown

Returners (13)

Courtney Bethune
Diana Draayer
Allison Eder-Zdechlik
Katy Fuller
Emily Gustafson
Lindsey Hibbard
Laura Johnson
Kaitlyn Klein
Allie Lewis
Courtney Potter
Erica Power
Emily Reibert
Rachel Skoglund

Newcomers (10)

Kalley Spreiter
Marina Chapman
Georgia Eger
Erin Moes
Madison Bergren
Allie Stanger
Laine Fischer
Brooke Pahlen
Paige Press
Amanda DiNella

By Class

Seniors (3)

Allison Eder-Zdechlik
Lindsey Hibbard
Emily Reibert

Juniors (4)

Courtney Bethune
Emily Gustafson
Allie Lewis
Courtney Potter

Sophomores (6)

Diana Draayer
Katy Fuller
Laura Johnson
Kaitlyn Klein
Erica Power
Rachel Skoglund

First-Years (10)

Madison Bergren
Marina Chapman
Amanda DiNella
Georgia Eger
Laine Fischer
Erin Moes
Brooke Pahlen
Paige Press
Kalley Spreiter

2015-16 Numerical Roster

No.	Name	Yr.	Pos.	Hgt.	Hometown/High School
1	Lindsey Hibbard	Sr.	G	5-6	Princeton, Minn./Princeton
2	Courtney Bethune	Jr.	D	5-8	Fort Frances, Ont./Warroad
3	Emily Reibert	Sr.	F	5-5	Inver Grove Heights, Minn./South St. Paul
4	Diana Draayer	So.	F	5-5	Deephaven, Minn./Minnetonka
5	Rachel Skoglund	So.	D	5-2	Forest Lake, Minn./Forest Lake
6	Emily Gustafson	Jr.	F	5-1	Esko, Minn./Esko
7	Kalley Spreiter	Fy.	F	5-5	Litchfield, Minn./Litchfield
8	Allison Eder-Zdechlik	Sr.	F	5-4	Stillwater, Minn./Stillwater
9	Erica Power	So.	F	5-6	Lakeville, Minn./Apple Valley
10	Marina Chapman	Fy.	D	5-9	South Haven, Minn./Annandale
12	Georgia Eger	Fy.	F	5-3	Stillwater, Minn./Stillwater
14	Katy Fuller	So.	F	5-5	Minneapolis, Minn./Southwest
15	Erin Moes	Fy.	D	5-5	Hastings, Minn./Hastings
16	Madison Bergren	Fy.	F	5-6	Mahtomedi, Minn./Mahtomedi
18	Allie Stanger	Fy.	F	5-11	Paynesville, Minn./Paynesville
19	Allie Lewis	Jr.	F	5-3	Kearney, Neb./Shattuck-Saint Mary's
20	Kaitlyn Klein	So.	F	5-6	Plymouth, Minn./Wayzata
21	Laine Fischer	Fy.	D	5-8	Northfield, Minn./Northfield
22	Brooke Pahlen	Fy.	F	5-6	Lakeville, Minn./Eastview
23	Laura Johnson	So.	D	5-2	Chanhausen, Minn./Chanhausen
24	Courtney Potter	Jr.	D	5-2	Dayton, Minn./Champlin Park
33	Paige Press	Fy.	G	5-3	Cottage Grove, Minn./Park
35	Amanda DiNella	Fy.	G	5-4	Oakbrook Terrace, Ill./Willowbrook

Head Coach: Mike Carroll (17th season)

Assistant Coaches: Courtney Boucher, Steve Carroll, Pat Carroll

Alphabetical Roster/Pronunciation Guide

NO.	NAME	Pronunciation
16	Bergren, Madison	
2	Bethune, Courtney	beth-OON
10	Chapman, Marina	
35	DiNella, Amanda	
4	Draayer, Diana	DRAY-er
8	Eder-Zdechlik, Allison	ee-der-ZED-lick
12	Eger, Georgia	EGG-er
21	Fischer, Laine	
14	Fuller, Katy	
6	Gustafson, Emily	GUST-uhf-son
1	Hibbard, Lindsey	
23	Johnson, Laura	
20	Klein, Kaitlyn	Kline
19	Lewis, Allie	
15	Moes, Erin	
22	Pahlen, Brooke	PAY-len
9	Power, Erica	
24	Potter, Courtney	
35	Press, Paige	
3	Reibert, Emily	RYE-bert
5	Skoglund, Rachel	SKOHG-lund
7	Spreiter, Kalley	SPRITE-er
18	Stanger, Allie	

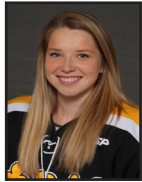
Player Profiles



#1 Lindsey Hibbard
Sr., Goaltender
Princeton, Minn./Princeton

Season Numbers

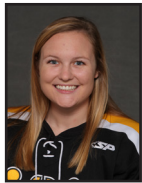
GP	GAA	Save Pct.	Record
10	2.24	.892	5-1-1



#2 Courtney Bethune
Jr., Defender
Fort Frances, Ont./Warroad

Season Numbers

GP	Goals	Assists	Points
22	0	3	3



#3 Emily Reibert
Sr., Forward
Inver Grove Heights, Minn./South St. Paul

Season Numbers

GP	Goals	Assists	Points
20	4	2	6



#4 Diana Draayer
So., Forward
Deephaven, Minn./Minnetonka

Season Numbers

GP	Goals	Assists	Points
21	5	5	10



#5 Rachel Skoglund
So., Defender
Forest Lake, Minn./Forest Lake

Season Numbers

GP	Goals	Assists	Points
21	1	0	1



#6 Emily Gustafson
Jr., Forward
Esko, Minn./Esko

Season Numbers

GP	Goals	Assists	Points
13	0	1	1



#7 Kalley Spreiter
Fy., Forward
Litchfield, Minn./Litchfield

Season Numbers

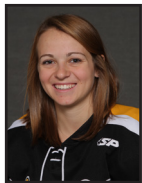
GP	Goals	Assists	Points
21	0	1	1



#8 Allison Eder-Zdechlik
Sr., Forward
Stillwater, Minn./Stillwater

Season Numbers

GP	Goals	Assists	Points
23	15	7	22



#9 Erica Power
So., Forward
Lakeville, Minn./Apple Valley

Season Numbers

GP	Goals	Assists	Points
23	8	8	17

Player Profiles



#10 Marina Chapman
 Fy., Defender
 South Haven, Minn./Annandale

Season Numbers

GP	Goals	Assists	Points
19	3	5	8



#12 Georgia Eger
 Fy., Forward
 Stillwater, Minn./Stillwater

Season Numbers

GP	Goals	Assists	Points
19	4	2	6



#14 Katy Fuller
 So., Forward
 Minneapolis, Minn./Southwest

Season Numbers

GP	Goals	Assists	Points
23	4	7	11



#15 Erin Moes
 Fy., Defender
 Hastings, Minn./Hastings

Season Numbers

GP	Goals	Assists	Points
21	5	5	10



#16 Madison Bergren
 Fy., Forward
 Mahtomedi, Minn./Mahtomedi

Season Numbers

GP	Goals	Assists	Points
22	0	2	2



#18 Allie Stanger
 Fy., Forward
 Paynesville, Minn./Paynesville

Season Numbers

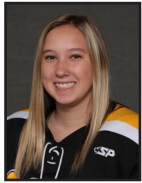
GP	Goals	Assists	Points
21	1	2	3



#19 Allie Lewis
 Jr., Forward
 Kearney, Neb./Shattuck-St. Mary's

Season Numbers

GP	Goals	Assists	Points
23	1	2	3



#20 Kaitlyn Klein
 So., Forward
 Plymouth, Minn./Wayzata

Season Numbers

GP	Goals	Assists	Points
8	3	3	6



#21 Laine Fischer
 Fy., Defender
 Northfield, Minn./Northfield

Season Numbers

GP	Goals	Assists	Points
23	4	4	8

Player Profiles



#22 Brooke Pahlen
 Fr., Forward
 Lakeville, Minn./Eastview

Season Numbers

GP	Goals	Assists	Points
12	0	0	0



#23 Laura Johnson
 So., Defender
 Chanhassen, Minn./Chanhassen

Season Numbers

GP	Goals	Assists	Points
19	1	4	5



#24 Courtney Potter
 Jr., Defender
 Dayton, Minn./Champlin Park

Season Numbers

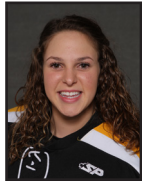
GP	Goals	Assists	Points
21	0	2	2



#33 Paige Press
 Fr., Goaltender
 Cottage Grove, Minn./Park

Season Numbers

GP	GAA	Save Pct.	Record
5	2.74	.870	0-0-0



#35 Amanda DiNella
 Fr., Goaltender
 Oakbrook Terrace, Ill./Willowbrook

Season Numbers

GP	GAA	Save Pct.	Record
17	2.59	.885	3-10-3

**The Automated ScoreBook
Gustavus Adolphus Overall Team Statistics (as of Feb 18, 2016)
All games**

Overall: 8-11-4 Conf: 7-6-3 Home: 5-4-0 Away: 3-5-4 Neut: 0-2-0

TEAM STATISTICS	GAC	OPP
SHOT STATISTICS		
Goals-Shot attempts	60-715	60-513
Shot pct.	.084	.117
Goals/Game	2.6	2.6
Shots/Game	31.1	22.3
Assists	65	71
POWER PLAYS		
Goals-Power Plays	16-75	16-73
Conversion Percent	.213	.219
Shot Attempts	115	115
Shot Percent	.139	.139
GOAL BREAKDOWN		
Total Goals	60	60
Power Play	16	16
Short-handed	8	4
Empty net	1	2
Penalty	0	0
Unassisted	12	11
Overtime	1	2
Shootout	0	0
Delayed Penalty	0	0
PENALTIES		
Number	79	82
Minutes	161	164
Penalties/Game	3.4	3.6
Pen minutes/Game	7.0	7.1
Minor	78	82
Major	1	0
10-minute Misconduct	0	0
Game Misconduct	0	0
Gross Misconduct	0	0
Match	0	0
SHOOTOUTS (Made-Att)	0-0	0-0
ATTENDANCE		
Total	1855	2323
Dates/Avg Per Date	9/206	12/194
Neutral Site #/Avg	2/216	

Goals by Period	1st	2nd	3rd	OT	Total
Gustavus Adolphus	14	30	15	1	60
Opponents	13	18	27	2	60

Saves by Period	1st	2nd	3rd	OT	Total
Gustavus Adolphus	144	166	134	9	453
Opponents	223	216	200	16	655

The Automated ScoreBook
 Gustavus Adolphus Category Leaders (as of Feb 11, 2016)
 All games

##	Points	GP	G	A	Pts	Sh
8	A. Eder-Zdechlik	21	14	7	21	73
9	Erica Power	21	8	8	16	70
15	Erin Moes	19	5	5	10	46
14	Katy Fuller	21	4	6	10	53
4	Diana Draayer	19	5	4	9	41
10	Marina Chapman	19	3	5	8	46
21	Laine Fischer	21	3	4	7	51
12	Georgia Eger	17	4	2	6	31
20	Kaitlyn Klein	8	3	3	6	21
3	Emily Reibert	18	4	1	5	31

##	Goals	GP	G	A	Pts	Sh
8	A. Eder-Zdechlik	21	14	7	21	73
9	Erica Power	21	8	8	16	70
15	Erin Moes	19	5	5	10	46
4	Diana Draayer	19	5	4	9	41
14	Katy Fuller	21	4	6	10	53
12	Georgia Eger	17	4	2	6	31
3	Emily Reibert	18	4	1	5	31
10	Marina Chapman	19	3	5	8	46
21	Laine Fischer	21	3	4	7	51
20	Kaitlyn Klein	8	3	3	6	21

##	Power-Play Goals	GP	PPG
8	A. Eder-Zdechlik	21	3
3	Emily Reibert	18	3
15	Erin Moes	19	2
14	Katy Fuller	21	2

##	Short-Handed Goals	GP	SHG
8	A. Eder-Zdechlik	21	4
21	Laine Fischer	21	1
4	Diana Draayer	19	1
10	Marina Chapman	19	1
9	Erica Power	21	1

##	Game-Winning Goals	GP	GWG
4	Diana Draayer	19	2
8	A. Eder-Zdechlik	21	2

##	Plus/Minus	GP	+/-
2	Courtney Bethune	20	+8
9	Erica Power	21	+5
12	Georgia Eger	17	+5
4	Diana Draayer	19	+3
7	Kalley Spreiter	19	+3
20	Kaitlyn Klein	8	+3
8	A. Eder-Zdechlik	21	+2
15	Erin Moes	19	+1
19	Allie Lewis	21	+1
16	Madison Bergren	21	+1

##	Assists	GP	G	A	Pts	Sh
9	Erica Power	21	8	8	16	70
8	A. Eder-Zdechlik	21	14	7	21	73
14	Katy Fuller	21	4	6	10	53
15	Erin Moes	19	5	5	10	46
10	Marina Chapman	19	3	5	8	46
4	Diana Draayer	19	5	4	9	41
21	Laine Fischer	21	3	4	7	51
23	Laura Johnson	17	1	4	5	18
20	Kaitlyn Klein	8	3	3	6	21
2	Courtney Bethune	20	0	3	3	22

##	Shots	GP	G	A	Pts	Sh	Sh%
8	A. Eder-Zdechlik	21	14	7	21	73	.192
9	Erica Power	21	8	8	16	70	.114
14	Katy Fuller	21	4	6	10	53	.075
21	Laine Fischer	21	3	4	7	51	.059
15	Erin Moes	19	5	5	10	46	.109
10	Marina Chapman	19	3	5	8	46	.065
4	Diana Draayer	19	5	4	9	41	.122
12	Georgia Eger	17	4	2	6	31	.129
3	Emily Reibert	18	4	1	5	31	.129
19	Allie Lewis	21	1	2	3	28	.036

##	Shot Pct.	GP	G	A	Pts	Sh	Sh%
8	A. Eder-Zdechlik	21	14	7	21	73	.192
20	Kaitlyn Klein	8	3	3	6	21	.143
12	Georgia Eger	17	4	2	6	31	.129
3	Emily Reibert	18	4	1	5	31	.129
4	Diana Draayer	19	5	4	9	41	.122
9	Erica Power	21	8	8	16	70	.114
15	Erin Moes	19	5	5	10	46	.109
14	Katy Fuller	21	4	6	10	53	.075
10	Marina Chapman	19	3	5	8	46	.065
18	Allie Stanger	19	1	1	2	16	.062

##	Penalties	GP	Pen	Min
14	Katy Fuller	21	8	16
23	Laura Johnson	17	8	16
10	Marina Chapman	19	7	14
12	Georgia Eger	17	6	12
4	Diana Draayer	19	6	12
7	Kalley Spreiter	19	5	10
24	Courtney Potter	20	5	10
15	Erin Moes	19	5	10
16	Madison Bergren	21	4	8
19	Allie Lewis	21	4	8

##	Penalty Minutes	GP	Pen	Min
23	Laura Johnson	17	8	16
14	Katy Fuller	21	8	16
10	Marina Chapman	19	7	14
12	Georgia Eger	17	6	12
4	Diana Draayer	19	6	12
15	Erin Moes	19	5	10
7	Kalley Spreiter	19	5	10
24	Courtney Potter	20	5	10
19	Allie Lewis	21	4	8
16	Madison Bergren	21	4	8

**The Automated ScoreBook
Gustavus Adolphus Combined Team Statistics (as of Feb 18, 2016)
All games**

Date	Opponent		Score	Att.
Nov 03	at UW-Superior	Tot	2-2	123
Nov 06	ST. OLAF	W	4-1	257
* Nov 13	#4 UST-WOM	W	6-4	247
* Nov 14	at UST-WOM	L	3-5	200
* 11/20/15	at Augsburg College	Tot	2-2	201
* Nov 21	AUGSBURG COLLEGE	W	4-1	378
Nov 28	vs #2 Elmira	L	1-2	212
Nov 29	vs #1 Plattsburgh	L	3-5	219
* Dec 04	at Saint Benedict	Tot	2-2	257
* Dec 05	SAINT BENEDICT	Lot	2-3	165
Dec 09	at #8 UW-River Falls	L	2-4	168
Dec 11	#8 UW-RIVER FALLS	Lot	1-2	228
Jan 08	at UW-Stevens Point	L	0-4	118
* Jan 16	ST. CATHERINE UNIV.	W	3-0	111
* Jan 15	at St. Catherine Univ.	Tot	1-1	145
* Jan 22	ST. OLAF	W	4-3	152
* Jan 23	at St. Olaf	W	5-0	156
* Jan 29	at Concordia-M'head	W	4-3	289
* Jan 30	at Concordia-M'head	L	5-6	301
* Feb 05	at Saint Mary's	Wot	3-2	235
* Feb 06	SAINT MARY'S	L	0-2	153
* Feb 12	at Bethel University	L	1-3	130
* Feb 13	BETHEL UNIVERSITY	L	2-3	164

TEAM STATISTICS	GAC	OPP
SHOT STATISTICS		
Goals-Shot attempts	60-715	60-513
Shot pct.	.084	.117
Goals/Game	2.6	2.6
Shots/Game	31.1	22.3
POWER PLAYS		
Goals-Power Plays	16-75	16-73
Conversion Percent	.213	.219
Shot Attempts	115	115
Shot Percent	.139	.139
GOAL BREAKDOWN		
Power Play	16	16
Short-handed	8	4
Empty net	1	2
Penalty	0	0
Unassisted	12	11
Overtime	1	2
Shootout	0	0
Delayed Penalty	0	0
PENALTIES		
Number	79	82
Minutes	161	164
Penalties/Game	3.4	3.6
Pen minutes/Game	7.0	7.1
SHOOTOUTS (Made-Att)	0-0	0-0

Record:	Overall	Home	Away	Neutral
ALL GAMES	8-11-4	5-4-0	3-5-4	0-2-0
CONFERENCE	7-6-3	4-3-0	3-3-3	0-0-0
NON-CONFERENCE	1-5-1	1-1-0	0-2-1	0-2-0

##	Player	gp	g	a	pts	sh	sh%	pen-min	pp	sh
8	A. Eder-Zdechlik	23	15	7	22	83	.181	2-4	3	4
9	Erica Power	23	9	8	17	78	.115	1-5	1	1
14	Katy Fuller	23	4	7	11	58	.069	8-16	2	0
4	Diana Draayer	21	5	5	10	47	.106	6-12	1	1
15	Erin Moes	21	5	5	10	56	.089	6-12	2	0
21	Laine Fischer	23	4	4	8	62	.065	3-6	0	1
10	Marina Chapman	19	3	5	8	46	.065	7-14	1	1
12	Georgia Eger	19	4	2	6	33	.121	7-14	1	0
3	Emily Reibert	20	4	2	6	32	.125	0-0	3	0
20	Kaitlyn Klein	8	3	3	6	21	.143	1-2	1	0
23	Laura Johnson	19	1	4	5	20	.050	10-20	1	0
19	Allie Lewis	23	1	2	3	32	.031	4-8	0	0
18	Allie Stanger	21	1	2	3	22	.045	1-2	0	0
2	Courtney Bethune	22	0	3	3	24	.000	1-2	0	0
16	Madison Bergren	22	0	2	2	20	.000	4-8	0	0
24	Courtney Potter	21	0	2	2	24	.000	5-10	0	0
5	Rachel Skoglund	21	1	0	1	21	.048	1-2	0	0
6	Emily Gustafson	13	0	1	1	14	.000	2-4	0	0
7	Kalley Spreiter	21	0	1	1	20	.000	5-10	0	0
22	Brooke Pahlen	12	0	0	0	2	.000	1-2	0	0
TM	TEAM	6	0	0	0	0	.000	4-8	0	0
Total		23	60	65	125	715	.084	79-161	16	8
Opponents		23	60	71	131	513	.117	82-164	16	4

##	Goalie	gp	min	ga	gaavg	saves	save%	w-l-t
1	Lindsey Hibbard	10	455:50	17	2.24	140	.892	5-1-1
35	Amanda DiNella	17	880:05	38	2.59	293	.885	3-10-3
33	Paige Press	5	65:43	3	2.74	20	.870	0-0-0
TM	EMPTY NET	6	8:09	2	-	0	.000	0-0-0
Total		23	1409:47	60	2.55	453	.883	8-11-4
Opponents		23	1409:47	60	2.55	655	.916	11-7-4

Attendance Summary	GAC	Opponent
Total	1855	2323
Dates/Avg Per Date	9/206	12/194
Neutral Site #/Avg	2/216	

Goals by Period	1st	2nd	3rd	OT	Total
Gustavus Adolphus	14	30	15	1	60
Opponents	13	18	27	2	60

Saves by Period	1st	2nd	3rd	OT	Total
Gustavus Adolphus	144	166	134	9	453
Opponents	223	216	200	16	655

**The Automated ScoreBook
Gustavus Adolphus Game Results (as of Feb 18, 2016)
All games**

Date	Opponent		Score	Shots	Overall	Conf	Time	Att.	Goalie of record
Nov 03	at UW-Superior	Tot	2-2	40/29	0-0-1	0-0-0	2:15h	123	Lindsey Hibbard
Nov 06	ST. OLAF	W	4-1	36/25	1-0-1	0-0-0	2:00	257	Amanda DiNella
* Nov 13	#4 UST-WOM	W	6-4	20/26	2-0-1	1-0-0	2:28	247	Lindsey Hibbard
* Nov 14	at UST-WOM	L	3-5	19/34	2-1-1	1-1-0	1:55	200	Amanda DiNella
* 11/20/15	at Augsburg College	Tot	2-2	31/27	2-1-2	1-1-1	2:03	201	Amanda DiNella
* Nov 21	AUGSBURG COLLEGE	W	4-1	31/22	3-1-2	2-1-1	1:51	378	Amanda DiNella
Nov 28	vs #2 Elmira	L	1-2	24/19	3-2-2	2-1-1	1:55	212	Amanda DiNella
Nov 29	vs #1 Plattsburgh	L	3-5	22/39	3-3-2	2-1-1	2:20	219	Amanda DiNella
* Dec 04	at Saint Benedict	Tot	2-2	39/21	3-3-3	2-1-2	2:00	257	Amanda DiNella
* Dec 05	SAINT BENEDICT	Lot	2-3	40/14	3-4-3	2-2-2	2:02	165	Lindsey Hibbard
Dec 09	at #8 UW-River Falls	L	2-4	22/27	3-5-3	2-2-2	1:50	168	Amanda DiNella
Dec 11	#8 UW-RIVER FALLS	Lot	1-2	18/23	3-6-3	2-2-2	2:02	228	Amanda DiNella
Jan 08	at UW-Stevens Point	L	0-4	26/21	3-7-3	2-2-2	1:48	118	Amanda DiNella
* Jan 16	ST. CATHERINE UNIV.	W	3-0	33/15	4-7-3	3-2-2	2:00	111	Amanda DiNella
* Jan 15	at St. Catherine Univ.	Tot	1-1	42/21	4-7-4	3-2-3	1:58	145	Amanda DiNella
* Jan 22	ST. OLAF	W	4-3	36/18	5-7-4	4-2-3	2:05	152	Lindsey Hibbard
* Jan 23	at St. Olaf	W	5-0	33/12	6-7-4	5-2-3	2:09	156	Lindsey Hibbard
* Jan 29	at Concordia-M'head	W	4-3	26/22	7-7-4	6-2-3	2:00	289	Lindsey Hibbard
* Jan 30	at Concordia-M'head	L	5-6	29/26	7-8-4	6-3-3	1:55	301	Amanda DiNella
* Feb 05	at Saint Mary's	Wot	3-2	42/15	8-8-4	7-3-3	2:00	235	Lindsey Hibbard
* Feb 06	SAINT MARY'S	L	0-2	30/24	8-9-4	7-4-3	1:46	153	Amanda DiNella
* Feb 12	at Bethel University	L	1-3	35/20	8-10-4	7-5-3	2:00	130	Amanda DiNella
* Feb 13	BETHEL UNIVERSITY	L	2-3	41/13	8-11-4	7-6-3	1:56	164	Amanda DiNella

<u>Team Record</u>	<u>W-L-T</u>	<u>Attendance</u>	<u>Dates</u>	<u>Total</u>	<u>Avg.</u>
Overall:	8-11-4	Total:	23	4609	200
Conference:	7-6-3	Home:	9	1855	206
Home:	5-4-0	Away:	12	2323	194
Away:	3-5-4	Neutral:	2	431	216
Neutral:	0-2-0				
Overtime:	1-2-4				