



2015-16 Gustavus Adolphus College Women's Hockey Game Notes


Gustavus Sports Information

800 W College Ave, St. Peter, MN 56082
gustavus.edu/athletics
(507) 933-7647 • sportsinfo@gustavus.edu

Women's Hockey Media Contact
Nick Hoelmer, Asst. Sports Information Director
(507) 933-8411 • nhoelmer@gustavus.edu


Follow Gustavus Athletics Online


 Twitter
@GustieAthletics

 Facebook
facebook.com/GustieAthletics

 Snap Chat
Username: Gusties

 Flickr
flickr.com/photos/gogusties

 YouTube
youtube.com/gustavusathletics

 Instagram
@gustieathletics

2015-16 SCHEDULE

DATE	OPPONENT	TIME/RESULT
------	----------	-------------

NOVEMBER

3	UW-Superior	T 2-2
6	ST. OLAF COLLEGE (Non-Conference)	W 4-1
13	NO. 4 UNIVERSITY OF ST. THOMAS	W 6-4
14	No. 4 University of St. Thomas	L 3-5
20	Augsburg College	T 2-2
21	AUGSBURG COLLEGE	W 4-2
28	No. 2 Elmira College (Panther Classic)	L 1-2
29	No. 1 Plattsburgh State (Panther Classic)	L 3-5

DECEMBER

4	College of Saint Benedict	T 2-2
5	COLLEGE OF SAINT BENEDICT	L 2-3
9	No. 8 UW-River Falls	L 2-4
11	NO. 8 UW-RIVER FALLS	L 1-2

JANUARY

8	UW-Stevens Point	L 0-4
15	St. Catherine University	T 1-1
16	ST. CATHERINE UNIVERSITY	W 3-0
22	ST. OLAF COLLEGE	W 4-3
23	St. Olaf College	W 5-0
29	Concordia College	W 4-3
30	Concordia College	L 5-6

FEBRUARY

5	Saint Mary's University	W 3-2
6	SAINT MARY'S UNIVERSITY	L 0-2
12	Bethel University	7 p.m.
13	BETHEL UNIVERSITY	2 P.M.
19	Hamline University	7 p.m.
20	HAMLIN UNIVERSITY	2 P.M.

HOME GAMES IN BOLD AND CAPS



Gustavus Adolphus College

Golden Gusties
(8-9-4 Overall, 7-4-3 MIAC)

vs.

Bethel University

Royals
(10-9-2 Overall, 8-4-2 MIAC)



Game 22

Date: Friday, February 12 • **Time:** 7 p.m. **Location:** Blaine, Minn.

Arena: Schwan Super Rink

Live Video: <http://portal.stretchinternet.com/Bethel/>

Live Stats: <http://portal.stretchinternet.com/Bethel/>

Game 23

Date: Saturday, February 13 • **Time:** 2 p.m. **Location:** St. Peter, Minn.

Arena: Don Roberts Ice Rink

Live Stats: <https://gustavus.edu/athletics/whky/LIVE/xlive.htm>

Setting The Scene: The Gustavus Adolphus College women's hockey team takes on Bethel University this weekend in a home-away series. The Gusties travel to Blaine, Minn. on Friday, Feb. 12 for a 7 p.m. game at Schwan Super Rink, and return home to Don Roberts Ice Rink on Saturday, Feb. 13 for a 2 p.m. game at Don Roberts Ice Rink. Gustavus enters the series with a 8-9-4 overall record, and 7-4-3 mark in the MIAC, while Bethel comes into the series at 10-9-2 overall and 8-4-2 in the league.

Last Time Out: Gustavus is most recently coming off of a series split with Saint Mary's University this past weekend. In Friday's series opener, the Gusties earned their first overtime win of the season in 3-2 fashion in Winona. The Gusties didn't wait long to strike, as first-year Allie Stanger (Paynesville, Minn.) scored her first career goal just 1:48 into the contest off an assist from fellow rookie Kalley Spreiter (Litchfield, Minn.). The assist marked another first, as it was Spreiter's first career point. The Cardinals evened the score on a power play goal at 10:48 in the first period to tie the score at 1-1 going into the first intermission. In the second, Gustavus struck early again though, as junior captain Allie Lewis (Kearney, Neb.) scored her first goal of the season from Erica Power (So., Lakeville, Minn.) to put the visitors up 2-1. However, in the third, the Cardinals' Jane Hannula put one through the pipes with just 4:29 remaining in the game to tie the score at 2-2 and force overtime. With less than a minute remaining of the five-minute extra period, it looked as though the Gusties would leave Winona with another overtime tie, however, senior Emily Reibert (Inver Grove Heights, Minn.) changed Gustavus' fortunes when she scored her fourth goal of the season off an assist from Katy Fuller (Minneapolis, Minn.) at 4:15 to give the Black and Gold the sudden death victory.

On Saturday, despite outshooting the Cardinals for the second day in a row, this time by a 30-24 mark, the Gusties were unable to score on Saint Mary's netminder Tori Herrmann. The Cardinal goalie stopped all 30 shots that came her way in the full 60 minutes to pick up her first shutout of the season and her sixth overall win. Saint Mary's goals came within 3:07 of each other in the second period. Jane Hannula got the scoring going for the visitors at the 14:14 mark, scoring her second goal in as many days to give her team a 1-0 lead. Then, at the 17:21 mark, Cardinal forward McKenna Parent put Saint Mary's up 2-0 with her seventh goal of the year. Gustie goalie Amanda DiNella (Fy., Oakbrook Terrace, Ill.) gave up both goals and suffered her eighth loss of the season. Paige Press (Fy., Cottage Grove, Minn.) came on to relieve DiNella and notched a shutout in 19 minutes played.

Bethel is coming off a series split with St. Olaf College. In game one in Northfield, the Oles earned their first conference win of the season in 4-0 fashion. St. Olaf scored 10 seconds into the game and then added three more goals in the third period to capture their first MIAC win of the season. Bethel outshot St. Olaf on the night by a 21-18 count but the Oles were the ones able to find the back of the net. Both teams had three power play opportunities with St. Olaf scoring once.

Saturday's contest in Blaine was a different story, as the Royals took a 6-0 win over St. Olaf to split the series. The Royals started slowly as neither team scored in the first period while St. Olaf nearly scored twice but the second period saw signs of life in the Bethel offense. Two second period goals were then followed by four in the third period as several of the Bethel scores were of highlight reel quality.

The Royals broke through in the second period when Wendy Roberts went on a two-on-one break along with Allie Fischer. Roberts skated in deep and wound up for a big slap shot but then at the last moment flipped a pass to Fischer who found the wide open net from just a few feet away. The great play ignited the Royals offense, which had scored just one goal over their previous seven periods. Lauren Kolak was able to punch a loose puck after a Caroline Kivisto shot in between the goalies pads for the second score at 15:12 in the second period.

Early in the third period Briita Nelson stole an Ole pass and took the puck all the way herself and fired one into the top shelf to put the Royals up 3-0. Just over a minute-and-a-half later Megan Niblock made it 4-0 with an assist from Sarina Goos. Kolak scored her second goal of the game at 10:16 in the third with Kivisto and Nelson assisting. Senior defenseman Erin Harper then scored her second goal of the season at 12:26 with assists to Natalie Simons and Nelson to finish the scoring at 6-0.

13 MIAC Championships • 11 NCAA Tournament Appearances

The Match Up

Statistical Comparison

Gustavus		Bethel
2.71 (2nd)	Goals For	2.14 (5th)
2.47 (7th)	Goals Against	2.19 (5th)
20.8% (1st)	Power Play	9.2% (9th)
81.9% (7th)	Penalty Kill	81.7% (8th)
+7 (T-1st)	Special Teams Net	-6 (T-8th)
7.1 (7th)	Penalty Minutes	7.5 (6th)

2015-16 season averages with MIAC ranks (10 teams)

The Series

Gustavus vs. Bethel

All-Time Record	35-3-1
Last Meeting	L 6-3
Current Streak	L1

Coach Mike Carroll

Overall Record at Gustavus	358-92-31
vs. Bethel	35-3-1

Coach Brian Carlson

Overall Record at Bethel	84-47-13
vs. Gustavus	3-12-0

Gustavus Last Five Seasons vs. Bethel	13-3-0
---------------------------------------	--------

Date	Location	Result
2/28/15*	St. Peter, Minn.	L 3-6
2/21/15	Blaine, Minn.	W 5-2
2/20/15	St. Peter, Minn.	L 2-4
3/1/14*	St. Peter, Minn.	W 3-2
2/22/14	St. Peter, Minn.	L 0-1
2/21/14	Blaine, Minn.	W 3-2
2/28/13*	St. Peter, Minn.	W 3-2
12/8/12	St. Peter, Minn.	W 3-1
11/10/12	Blaine, Minn.	W 2-0
11/9/12	St. Peter, Minn.	W 3-1
3/1/12*	St. Peter, Minn.	W 1-0
11/12/11	St. Peter, Minn.	W 6-3
11/11/11	Blaine, Minn.	W 5-1
3/5/11**	St. Peter, Minn.	W 3-0
11/20/10	Arden Hills, Minn.	W 2-0
11/19/10	St. Peter, Minn.	W 4-1

* - Denotes MIAC Playoff Game

** - Denotes MIAC Championship Game

Series Snapshot: This weekend's series with Bethel marks the 40th and 41st meetings between the Gusties and Royals in women's hockey. The Gusties hold the advantage in the all-time series with a record of 35-3-1, however, two of those three losses came last season when Bethel earned a 4-2 win in the regular season series opener, and upset Gustavus in the MIAC Playoff Semifinals by a 6-3 count. The Gusties defeated the Royals 5-2 in the second game of last season's regular season series.

About The Royals: Saint Mary's currently sits in a tie for third place in the MIAC standings with 18 points, tied with Concordia, one ahead of fifth-place Gustavus, and two behind first-place Augsburg.

The Royals are led by forwards Sarina Goos and Wendy Roberts, with the pair having tallied 13 and 11 points this season, respectively. Goos, a first-year has three goals and 10 assists, while Roberts, a sophomore, has notched a team-leading seven goals and four assists. Erika Geary and Erin Harper also have 11 points for the Royals, with each having tallied two goals and nine assists. Michele Klimstra leads Bethel between the pipes. The sophomore goalie is 6-3-0 on the season after posting a .930 save percentage and 1.77 goals against average.

Bethel is near the middle of the conference in several statistical categories, including a fifth place ranking in goals scored at 2.14 per game and an identical fifth place ranking in goals allowed at 2.19 per contest.

Shots Aplenty: Gustavus has outshot its opponents in 16 of its 21 games so far this season, but has had trouble finding the net on a consistent basis. The Gusties are 7-5-4 in games where they outshoot their opponents compared to their 1-4-0 mark when being outshot.

Putting the Power In Power Play: Gustavus continues to operate as a strong power play unit as the season continues. The Gusties are first in the MIAC in power play percentage at 20.8 percent, and are 8-5-2 when scoring at least one power play goal. Allison Eder-Zdechlik continues to lead the league in power play goals with four, while fellow senior Emily Reibert is tied for second on that same list with three.

Gustavus Embarks On 19th Season Of Women's Hockey: The Gustavus women's hockey team is currently in its 19th season. Founded in 1997, the Gusties have attained an all-time record of 394-111-32, which stands as the second winningest program in all of NCAA Division III women's hockey. The Gustie women have won 13 MIAC titles in the 18 years of women's hockey in the conference. Those 14 titles rank first in front of St. Thomas (3), and Augsburg and Saint Mary's, who each have two. Gustavus has also earned the MIAC Playoff crown a total of 11 times, 10 of which have come in the past 12 years and led to 11 NCAA Tournament appearances.

Wearing The "C": In the 18-year history of the Gustavus women's hockey program, 36 players have earned the honor of being a captain. This year, three new players earn that title in senior Allison Eder-Zdechlik, junior Allie Lewis, and sophomore Diana Draayer.

Home Grown Talent: Of the 23 players on this year's roster, 20 are natives of Minnesota. The only players who reside outside the State of Hockey are Courtney Bethune, who hails from Fort Frances, Ontario, Allie Lewis, who is a native of Kearney, Nebraska, and Amanda DiNella from Oakbrook Terrace, Illinois.

Scorers Return: Despite losing two of its top four scorers from its 2014-15 squad, Gustavus will return 62 percent of its scoring from last season, including sophomore Erica Power who led last year's squad with 27 points (9G, 18A) and Allison Eder-Zdechlik who finished tied for second on the team with 20 points (9G, 11A).

A Balanced Approach: Thirteen of the Gusties' 23 players in 2015-16 are returners, and the Gusties also welcome back three of their five All-MIAC selections. However, the Gusties also welcome in 10 first-years, including five forwards, three defenders, and two goalies.



Gustavus Quick Facts

Location:	St. Peter, Minnesota
Address:	800 West College Ave. St. Peter, MN 56082
Founded:	1862
Enrollment:	2,456
Nickname:	Golden Gusties
School Colors:	Black and Gold
Home Ice:	Don Roberts Ice Rink
NCAA Affiliation:	NCAA Division III
Conference:	Minnesota Intercollegiate Athletic
President:	Rebecca M. Bergman
Athletic Director:	Tom Brown
Assistant Athletic Director:	Jared Phillips
Athletic Trainer:	Troy Banse
Equipment Manager:	Jed Friedrich
Sports Information Director:	CJ Siewert
Asst. Sports Information Director:	Nick Hoelmer

Gustavus Hockey Quick Facts

2014-15 Record:	19-5-2
2014-15 MIAC Record/Finish:	15-2-1 / 1st
All-Time Record:	394-111-32
All-Time MIAC Record:	263-34-15
MIAC Championships:	13
Returners/First-years:	13/10
All-MIAC Honorees Returning/Lost:	3/2

Gustavus Under Head Coach Mike Carroll

Year	Overall	MIAC	Conference Finish
1999-00	18-10-1	12-5-1	3rd
2000-01	23-6-1	16-2-0	1st
2001-02	23-5-2	18-0-1	1st
2002-03	14-9-4	11-4-3	3rd
2003-04	22-6-0	16-2-0	2nd
2004-05	25-4-1	17-1-0	1st
2005-06	22-5-2	17-0-1	1st
2006-07	25-3-0	17-1-0	1st
2007-08	25-3-0	18-0-0	1st
2008-09	22-2-4	16-0-2	1st
2009-10	26-6-2	14-3-1	1st
2010-11	22-5-3	14-2-2	1st
2011-12	24-4-2	16-1-1	1st
2012-13	27-2-1	18-0-0	1st
2013-14	17-8-2	14-4-0	2nd
2014-15	19-5-2	15-2-1	1st
2015-16	8-9-4	7-4-3	--
Totals	358-92-31	256-31-16	12 MIAC Titles

Around The League

MIAC Standings

School	Points	MIAC	Overall
Augsburg	20	9-3-2	12-7-2
St. Thomas	19	9-4-1	14-5-1
Concordia	18	9-5	11-9-1
Bethel	18	8-4-2	10-9-2
Gustavus	17	7-4-3	8-9-4
Saint Mary's	14	6-6-2	7-11-3
Saint Benedict	12	5-7-2	7-12-2
Hamline	11	5-8-1	8-11-2
St. Catherine	8	3-9-2	4-12-5
St. Olaf	3	1-12-1	2-18-1

This Weekend in the MIAC

Friday, February 12

Gustavus at Bethel | 7 p.m.
 St. Catherine at Hamline | 7 p.m.
 St. Olaf at Concordia | 7:15 p.m.
 Saint Mary's at Saint Benedict | 7:30 p.m.
 Augsburg at St. Thomas | 7:30 p.m.

Saturday, February 13

Bethel at Gustavus | 2 p.m.
 St. Olaf at Concordia | 2 p.m.
 Saint Mary's at Saint Benedict | 3 p.m.
 St. Thomas at Augsburg | 4 p.m.
 Hamline at St. Catherine | 6 p.m.

MIAC Athlete-of-the-Week



Claire Cripps
 Sr., Forward
 Hutchinson Minn./Hutchinson

Opponent	G	A	P
at St. Thomas	1	3	4
vs. St. Thomas	1	1	2
Totals	2	4	6

USCHO.com Div. III Poll

Rank	School	Overall	Points	Last
1	Plattsburgh (15)	22- 0-0	150	1
2	Adrian	19- 2-1	124	2
3	Elmira	17- 3-1	116	3
4	Lake Forest	18- 1-2	104	4
5	Amherst	15- 1-3	99	5
6	Wisconsin-River Falls	16- 4-1	64	7
7	Middlebury	13- 4-3	58	6
8	Norwich	15- 6-0	49	9
9	St. Thomas	14- 5-1	28	8
10	Castleton	14- 5-2	14	10



Gustavus Record When:

At home	5-3-0
On the road	3-4-4
Neutral Site	0-2-0
vs. MIAC opponents	7-4-3
vs. Non-conference opponents	1-5-1
vs. Top 10 opponents	1-5-0
GAC scores 4 or more goals	6-1-0
GAC scores 3 goals	2-2-0
GAC scores 2 or fewer goals	0-3-5
GAC scores first	7-1-2
Opponent scores first	1-8-2
GAC leads after 1st period	4-0-1
Opponent leads after 1st period	1-2-1
Tied after 1st period	2-6-2
GAC leads after 2nd period	7-2-1
Opponent leads after 2nd period	0-5-0
Tied after 2nd period	1-2-2
In overtime	0-2-3
Games decided by one goal	3-4-0
Games decided by two goals	1-4-0
Games decided by three goals	3-0-0
Games decided by four or more	1-1-0
GAC scores on the power play	8-5-2
GAC scoreless on the power play	0-5-1
GAC scores two or more PP goals	1-0-2
GAC outshoots opponent	7-5-4
GAC outshot by opponent	1-4-0
Shots equal	0-0-0
Tuesday Games	0-0-1
Wednesday Games	0-1-0
Friday Games	5-2-3
Saturday Games	3-5-0
Sunday Games	0-1-0
In November	3-3-2
In December	0-3-1
In January	4-2-1
In February	1-1-0
In March	0-0-0
Following a win	5-4-0
Following a loss	0-4-3
Following a tie	3-1-0
Night games	5-5-4
Day games	3-4-0

Who's Hot

Scoring vs. Saint Mary's

Player	Games	Goals	Assists	Points	Point Streak
Allie Stanger	2	1	0	1	--
Emily Reibert	2	1	0	1	--
Erica Power	2	0	1	1	--
Allie Lewis	2	1	0	1	--

Goaltending vs. Saint Mary's

Player	Record	Minutes	GA	Saves	Scoreless Str.
Lindsey Hibbard	1-0-0	64:15	2	13	8:44

2015-16 Season By The Numbers

Largest Victory	5: vs. St. Olaf (1/23/16)
Largest Defeat	4: at UW-Stevens Point (1/8/16)
Largest First Period Lead	2: vs. Augsburg (11/21/15)
Largest First Period Deficit	2 (2x) Last: vs. St. Olaf (1/22/16)
Largest Second Period Lead	4: vs. St. Thomas (11/13/15)
Largest Second Period Deficit	4: at No. 7 UW-River Falls (12/9/15)
Most Goals Scored	6: vs. St. Thomas (11/13/15)
Fewest Goals Scored	0 (2x): Last vs. Saint Mary's (2/13/16)
Most Goals Allowed	6: at Concordia (1/30/16)
Fewest Goals Allowed	0 (2x) Last: vs. St. Olaf (1/23/16)
Largest Lead	5: vs. St. Olaf (1/23/16)
Largest Lead On Road	5: vs. St. Olaf (1/23/16)
Largest Lead At Home	4: vs. St. Thomas (11/13/15)
Largest Blown Lead	2: vs. No. 1 Plattsburgh (11/29/15)
Largest Deficit	4: at UW-Stevens Point (1/8/16)
Largest Deficit On Road	4: at UW-Stevens Point (1/8/16)
Largest Deficit At Home	2 (2x): Last vs. Saint Mary's (2/13/16)
Largest Comeback-Win/Tie	2 vs. St. Olaf (W4-3) (1/22/16)



Last Time It Happened

COMEBACKS

GAC won when trailing after two periods

December 13, 2014 vs. UW-Stevens Point. Trailing 1-0 early in the third, Gustavus scored three consecutive goals to capture a 3-1 victory.

Opponent won when trailing after two periods

Dec. 5, 2015 vs. Saint Benedict. Gustavus led CSB 2-1 going into third period, but Blazers scored once in third and once in overtime to earn 3-2 victory

Overcame 1-goal deficit and won

GAC: January 22, 2016 vs. St. Olaf College. Trailing 3-1 after the first, Gustavus won 4-3.
OPP: Dec. 5, 2015 vs. Saint Benedict. Gustavus led 2-1 after second, Saint Ben's won 3-2

Overcame 2-goal deficit and won

GAC: January 22, 2016 vs. St. Olaf College. Trailing 3-1 after the first, Gustavus won 4-3.
OPP: Nov. 29, 2015 vs. No. 1 Plattsburgh State. Gustavus led Plattsburgh 3-1 going into third period, but Cardinals scored four goals in third period to earn 5-3 win.

Overcame a 3-goal deficit and won

GAC: March 1, 1998 vs. University of Minnesota Club. Gusties scored one in the second and three in the third to win 4-3.

OPP: Never

OVERTIME GAMES

Won overtime game

GAC: March 1, 2012 vs. Bethel. Courtney Boucher scored 6:25 in to overtime to win 1-0 and advance to the MIAC Championship.

OPP: Dec. 5, 2015 vs. Saint Benedict

Tied overtime game

Jan 15, 2016 at St. Catherine

SERIES SWEEPS

Swept a 2-game regular season home-home series

GAC: Jan. 22 and 23, 2016 vs. St. Olaf. (4-3 Friday in St. Peter, 5-0 Saturday in Northfield)
OPP: Jan. 31-Feb. 1, 2014 vs. Saint Benedict. (4-2 Friday night in St. Peter, 4-2 again on Saturday in St. Cloud)

Swept a 2-game regular season home series

GAC: Nov. 14-15, 2014 vs. Concordia. (3-1, 2-0)

OPP: Never

Swept a 2-game regular season away series

GAC: Nov. 15-16, 2013 at Concordia. (4-1, 2-0)
OPP: Never. (MIAC Playoffs: March 10-11, 2000 at Augsburg. (4-1, 2-1)

SHUTOUTS

Last Shutout

GAC: Jan. 23, 2016 at St. Olaf, 5-0

OPP: Feb. 13, 2016 vs. Saint Mary's, 2-0

Last Home Shutout

GAC: Jan 16, 2016 vs. St. Catherine, 3-0

OPP: Feb. 13, 2016 vs. Saint Mary's, 2-0

Last Road Shutout

GAC: Jan. 23, 2016 at St. Olaf, 5-0

OPP: Jan. 8, 2016 at UW-Stevens Point, 4-0

Scoreless Ties (2 in program history)

Jan. 14, 2010 vs. Trinity (Conn.)

Feb. 17, 2009 at UW-Stevens Point

EXTRA ATTACKER GOALS

Scored an extra attacker goal

GAC: Jan. 29, 2016 at Concordia. Erica Power scored w/ 38 sec. left. Concordia won 6-5.

OPP: Dec. 5, 2015 (Saint Benedict) CSB won 3-2.

SHORTHANDED GOALS

Scored a shorthanded goal

GAC: Jan 29, 2016 at Concordia. Erica Power scored shorthanded goal in third period to put Gustavus up 4-2.

OPP: Jan. 22, 2016 at Gustavus. Jane Vezina scored shorthanded in the first period of a 4-3 win for the Gusties.

Scored two shorthanded goals

GAC: Nov. 22, 2008 at St. Olaf. Melissa Mackley scored two short-handed goals in the third period. Gusties won 4-2.

OPP: Never

EMPTY NET GOALS

Scored an empty net goal

GAC: Nov. 21, 2015 vs. Augsburg. Allison Eder-Zdechlik scored EN at 18:58 in 4-1 win for the Gusties in St. Peter.

OPP: Jan. 30, 2016 at Concordia. Tori Davis scored EN at 15:49 of a 6-5 Concordia win in Moorhead.

TEAM GOALS IN A PERIOD

Team scored 5 or more goals in a period

GAC: Feb. 23, 2013 vs. Saint Benedict. The Gusties scored six goals in the second period on their way to an 8-2 victory in St. Peter.

OPP: Dec. 3, 1998 at the University of Minnesota (Mariucci Arena. Gophers scored five goals in the first period and won 8-1.

PENALTY SHOTS

Scored on a penalty shot

GAC: Never.

OPP: March 19, 2011 vs. Middlebury (NCAA 3rd Place Game, Rochester, N.Y.). Penalty shot goal scored after Lindsey Hjelm checking penalty in the second period. Middlebury won 5-0.

PENALTIES

Not penalized

GAC: Jan. 8, 2016 at UW-Stevens Point. Gustavus lost 4-0.

OPP: Dec. 2, 2000 at St. Catherine. St. Kate's won 4-3.

Neither team was penalized

Jan. 30, 1998 at Saint Mary's. Gusties won 6-2.

HAT TRICKS

Last individual 3-goal game

GAC: Nov. 21, 2015 vs. Augsburg. Allison Eder-Zdechlik scored three goals (one even, one shorthanded, one empty net) in a 4-1 Gustavus win in St. Peter.

OPP: Jan. 22, 2016 vs. St. Olaf. Jane Vezina scored three times in 4-3 Gustie win.

Last individual 4-goal game

GAC: Dec. 2, 2011 at Augsburg. Allie Schwab scored three PP goals and an even goal in a 9-0 shutout.
OPP: Never.

All goals scored by one player (3+ Goals)

GAC: Never.

OPP: Dec. 2, 2006 at Hamline. Melanie Levielle scored all three goals in a 4-3 loss.

SHOTS ON GOAL

Fewer than 15 shots in a game

GAC: Dec. 3, 1998 at the University of Minnesota, 11 shots. Minnesota won 8-1.

OPP: Jan. 23, 2016 vs. St. Olaf, 12 shots. GAC won 5-0

Fewer than 20 shots in a game

GAC: DEC. 11, 2015 VS. UW-RIVER FALLS, 18 shots. Gustavus lost 2-1.

OPP: Feb. 12, 2016 vs. Saint Mary's, 15 shots. GAC won 3-2.

40 or more shots in a game

GAC: Jan. 15, 2016 vs. St. Catherine, 42 shots. Tied 1-1.

OPP: Nov. 29, 2014 at Plattsburgh, 42 shots. Tied 4-4.

50 or more shots in a game

GAC: Feb. 16, 2013 vs. St. Olaf, 51 shots. Gustavus won 6-2.

OPP: Nov. 23, 1998 vs. the University of Minnesota: 51 shots. Minnesota won 6-0.

60 or more shots in a game

GAC: Feb. 15, 2013 at St. Olaf, 61 shots. Gustavus won 7-4.

OPP: Feb. 5, 1998 at Boston College, 65 shots. BC won 10-1.

SINGLE GAME POINTS

Player had four points in a game

GAC: Nov. 13, 2014 vs. St. Thomas. Diana Draayer scored three goals, one assist in 6-4 win over St. Thomas.

OPP: Mar. 18, 2011 vs. Norwich (NCAA Semifinals). Julie Fortier scored three goals with an assist in a 5-4 Norwich victory.

Player had five points in a game

GAC: Dec. 2, 2011 at Augsburg. Allie Schwab scored three PP goals and an even goal with an assist in a 9-0 shutout.

OPP: Mar. 18, 2005 vs. Middlebury. (NCAA Semifinals) Lorna Griffis scored two goals with three assists in a 7-3 Middlebury win.

Player had six or more points in a game

GAC: Feb. 11, 2005 at St. Catherine. Andrea Peterson scored two goals with six assists in a 13-0 win. (Most individual points in a game in program history)

OPP: Jan. 30, 1999 at Middlebury. Michelle Labbe scored three goals with three assists in a 8-0 Middlebury win.





Carroll At A Glance

Hometown

- Edina, Minnesota

Education

- Bachelor's Degree: Recreation, Parks, and Leisure Services (Minnesota State, Mankato '82)

Family

- Wife: Terri
- Children: Matt and Mike

Coaching

- 1983-84 – Assistant Coach, University of St. Thomas
- 1984-85 – Assistant Coach, Fergus Falls High School
- 1986-87 – Head Coach, Fergus Falls Community College
- 1990-99 – Head Coach, Mankato West High School
- 1999-Present – Head Coach, Gustavus Adolphus College

Years At Gustavus: 16

All-time Record: 358-92-31

All-time MIAC Record: 256-31-16

MIAC Titles: 12

MIAC Playoff Titles: 11

NCAA Tournaments: 11

NCAA Tournament Record: 8-16-0

Final Fours: 7

Most Wins In A Season: 27 (2012-13)

Fewest Wins In A Season: 14 (2002-03)

*** All-time winningest coach in Gustavus women's hockey history.

Head Coach Mike Carroll

Mike Carroll is in his 17th season as the women's head hockey coach at Gustavus. Within his tenure behind the Gustie bench, Carroll has turned Gustavus women's hockey into one of the most successful programs in NCAA Division III. He has compiled an overall record of 358-92-31 in 16 seasons and has the most coaching victories in the history of the program.

Last season, the Gustavus women's hockey team regained its spot atop of the MIAC standings, finishing first in the final conference standings with 32 points at 15-2-1. However, the Gusties suffered a 6-3 loss to Bethel University in the MIAC Playoff Semifinals, which brought their season to an end and the team finished with an overall record of 19-5-2.

Carroll has directed the Gusties to 12 MIAC regular season titles (2000-01, 2001-02, 2004-05, 2005-06, 2006-07, 2007-08, 2008-09, 2009-10, 2010-11, 2011-12, 2012-13) and has been named the MIAC Coach-of-the-Year six times (2001-02, 2003-04, 2004-05, 2005-06, 2010-11, 2012-13, 2014-15). In addition to coaching 37 players who have earned All-Conference honors 64 times, he has coached five MIAC Players-of-the-Year in Sarah Garrison, Andrea Peterson, Stefanie Ubl, Allie Schwab, Lindsey Hjelm. Carroll has also worked with 14 players who have earned All-America distinction 22 times and two American Hockey Coaches Association Players-of-the-Year, including four-time MIAC Player-of-the-Year and four-time All-American Andrea Peterson.

Prior to coming to Gustavus, Carroll served as the head boys' hockey coach at Mankato West High School from 1991 to 1999. Carroll's college coaching resume included a stint as head men's hockey coach at Fergus Falls Community College from 1986 to 1987 as well as a season as the assistant men's coach at the University of St. Thomas in 1983.

Carroll, an Edina, Minnesota native, competed in hockey and baseball at Mankato State. After graduating with a degree in municipal recreation in 1982, Carroll played professional baseball in the Montreal Expos organization for two years.

Mike and his wife, Terri, live in Mankato and have two sons, Matt and Mike.

2015-16 Roster Breakdown

Returners (13)

Courtney Bethune
Diana Draayer
Allison Eder-Zdechlik
Katy Fuller
Emily Gustafson
Lindsey Hibbard
Laura Johnson
Kaitlyn Klein
Allie Lewis
Courtney Potter
Erica Power
Emily Reibert
Rachel Skoglund

Newcomers (10)

Kalley Spreiter
Marina Chapman
Georgia Eger
Erin Moes
Madison Bergren
Allie Stanger
Laine Fischer
Brooke Pahlen
Paige Press
Amanda DiNella

By Class

Seniors (3)

Allison Eder-Zdechlik
Lindsey Hibbard
Emily Reibert

Juniors (4)

Courtney Bethune
Emily Gustafson
Allie Lewis
Courtney Potter

Sophomores (6)

Diana Draayer
Katy Fuller
Laura Johnson
Kaitlyn Klein
Erica Power
Rachel Skoglund

First-Years (10)

Madison Bergren
Marina Chapman
Amanda DiNella
Georgia Eger
Laine Fischer
Erin Moes
Brooke Pahlen
Paige Press
Kalley Spreiter

2015-16 Numerical Roster

No.	Name	Yr.	Pos.	Hgt.	Hometown/High School
1	Lindsey Hibbard	Sr.	G	5-6	Princeton, Minn./Princeton
2	Courtney Bethune	Jr.	D	5-8	Fort Frances, Ont./Warroad
3	Emily Reibert	Sr.	F	5-5	Inver Grove Heights, Minn./South St. Paul
4	Diana Draayer	So.	F	5-5	Deephaven, Minn./Minnetonka
5	Rachel Skoglund	So.	D	5-2	Forest Lake, Minn./Forest Lake
6	Emily Gustafson	Jr.	F	5-1	Esko, Minn./Esko
7	Kalley Spreiter	Fy.	F	5-5	Litchfield, Minn./Litchfield
8	Allison Eder-Zdechlik	Sr.	F	5-4	Stillwater, Minn./Stillwater
9	Erica Power	So.	F	5-6	Lakeville, Minn./Apple Valley
10	Marina Chapman	Fy.	D	5-9	South Haven, Minn./Annandale
12	Georgia Eger	Fy.	F	5-3	Stillwater, Minn./Stillwater
14	Katy Fuller	So.	F	5-5	Minneapolis, Minn./Southwest
15	Erin Moes	Fy.	D	5-5	Hastings, Minn./Hastings
16	Madison Bergren	Fy.	F	5-6	Mahtomedi, Minn./Mahtomedi
18	Allie Stanger	Fy.	F	5-11	Paynesville, Minn./Paynesville
19	Allie Lewis	Jr.	F	5-3	Kearney, Neb./Shattuck-Saint Mary's
20	Kaitlyn Klein	So.	F	5-6	Plymouth, Minn./Wayzata
21	Laine Fischer	Fy.	D	5-8	Northfield, Minn./Northfield
22	Brooke Pahlen	Fy.	F	5-6	Lakeville, Minn./Eastview
23	Laura Johnson	So.	D	5-2	Chanhassen, Minn./Chanhassen
24	Courtney Potter	Jr.	D	5-2	Dayton, Minn./Champlin Park
33	Paige Press	Fy.	G	5-3	Cottage Grove, Minn./Park
35	Amanda DiNella	Fy.	G	5-4	Oakbrook Terrace, Ill./Willowbrook

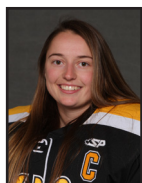
Head Coach: Mike Carroll (17th season)

Assistant Coaches: Courtney Boucher, Steve Carroll, Pat Carroll

Alphabetical Roster/Pronunciation Guide

NO.	NAME	Pronunciation
16	Bergren, Madison	
2	Bethune, Courtney	beth-0ON
10	Chapman, Marina	
35	DiNella, Amanda	
4	Draayer, Diana	DRAY-er
8	Eder-Zdechlik, Allison	ee-der-ZED-lick
12	Eger, Georgia	EGG-er
21	Fischer, Laine	
14	Fuller, Katy	
6	Gustafson, Emily	GUST-uhf-son
1	Hibbard, Lindsey	
23	Johnson, Laura	
20	Klein, Kaitlyn	Kline
19	Lewis, Allie	
15	Moes, Erin	
22	Pahlen, Brooke	PAY-len
9	Power, Erica	
24	Potter, Courtney	
35	Press, Paige	
3	Reibert, Emily	RYE-bert
5	Skoglund, Rachel	SKOHG-lund
7	Spreiter, Kalley	SPRITE-er
18	Stanger, Allie	

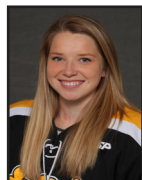
Player Profiles



#1 Lindsey Hibbard
Sr., Goaltender
Princeton, Minn./Princeton

Season Numbers

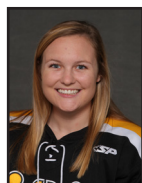
GP	GAA	Save Pct.	Record
10	2.24	.892	5-1-1



#2 Courtney Bethune
Jr., Defender
Fort Frances, Ont./Warroad

Season Numbers

GP	Goals	Assists	Points
20	0	3	3



#3 Emily Reibert
Sr., Forward
Inver Grove Heights, Minn./South St. Paul

Season Numbers

GP	Goals	Assists	Points
18	4	1	5



#4 Diana Draayer
So., Forward
Deephaven, Minn./Minnetonka

Season Numbers

GP	Goals	Assists	Points
19	5	4	9



#5 Rachel Skoglund
So., Defender
Forest Lake, Minn./Forest Lake

Season Numbers

GP	Goals	Assists	Points
19	1	0	1



#6 Emily Gustafson
Jr., Forward
Esko, Minn./Esko

Season Numbers

GP	Goals	Assists	Points
11	0	1	1



#7 Kalley Spreiter
Fy., Forward
Litchfield, Minn./Litchfield

Season Numbers

GP	Goals	Assists	Points
19	0	1	1



#8 Allison Eder-Zdechlik
Sr., Forward
Stillwater, Minn./Stillwater

Season Numbers

GP	Goals	Assists	Points
21	14	7	21

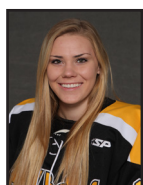


#9 Erica Power
So., Forward
Lakeville, Minn./Apple Valley

Season Numbers

GP	Goals	Assists	Points
21	8	8	16

Player Profiles



#10 Marina Chapman

Fy., Defender
South Haven, Minn./Annandale

Season Numbers

GP	Goals	Assists	Points
19	3	5	8



#12 Georgia Eger

Fy., Forward
Stillwater, Minn./Stillwater

Season Numbers

GP	Goals	Assists	Points
17	4	2	6



#14 Katy Fuller

So., Forward
Minneapolis, Minn./Southwest

Season Numbers

GP	Goals	Assists	Points
21	4	6	10



#15 Erin Moes

Fy., Defender
Hastings, Minn./Hastings

Season Numbers

GP	Goals	Assists	Points
19	5	5	10



#16 Madison Bergren

Fy., Forward
Mahtomedi, Minn./Mahtomedi

Season Numbers

GP	Goals	Assists	Points
21	0	2	2



#18 Allie Stanger

Fy., Forward
Paynesville, Minn./Paynesville

Season Numbers

GP	Goals	Assists	Points
19	1	1	2

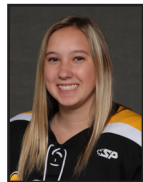


#19 Allie Lewis

Jr., Forward
Kearney, Neb./Shattuck-St. Mary's

Season Numbers

GP	Goals	Assists	Points
21	1	2	3



#20 Kaitlyn Klein

So., Forward
Plymouth, Minn./Wayzata

Season Numbers

GP	Goals	Assists	Points
8	3	3	6



#21 Laine Fischer

Fy., Defender
Northfield, Minn./Northfield

Season Numbers

GP	Goals	Assists	Points
21	3	4	7



Player Profiles



#22 Brooke Pahlen
Fr., Forward
Lakeville, Minn./Eastview

Season Numbers

GP	Goals	Assists	Points
11	0	0	0



#23 Laura Johnson
So., Defender
Chanhausen, Minn./Chanhausen

Season Numbers

GP	Goals	Assists	Points
17	1	4	5



#24 Courtney Potter
Jr., Defender
Dayton, Minn./Champlin Park

Season Numbers

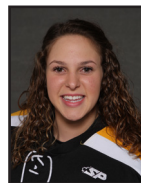
GP	Goals	Assists	Points
20	0	2	2



#33 Paige Press
Fr., Goaltender
Cottage Grove, Minn./Park

Season Numbers

GP	GAA	Save Pct.	Record
5	2.74	.870	0-0-0



#35 Amanda DiNella
Fr., Goaltender
Oakbrook Terrace, Ill./Willowbrook

Season Numbers

GP	GAA	Save Pct.	Record
15	2.60	.890	3-8-3

The Automated ScoreBook
Gustavus Adolphus Overall Team Statistics (as of Feb 11, 2016)
All games

Overall: 8-9-4 Conf: 7-4-3 Home: 5-3-0 Away: 3-4-4 Neut: 0-2-0

TEAM STATISTICS	GAC	OPP
SHOT STATISTICS		
Goals-Shot attempts	57-639	54-480
Shot pct.	.089	.112
Goals/Game	2.7	2.6
Shots/Game	30.4	22.9
Assists	61	63
POWER PLAYS		
Goals-Power Plays	16-71	13-67
Conversion Percent	.225	.194
Shot Attempts	107	107
Shot Percent	.150	.121
GOAL BREAKDOWN		
Total Goals	57	54
Power Play	16	13
Short-handed	8	3
Empty net	1	1
Penalty	0	0
Unassisted	11	10
Overtime	1	2
Shootout	0	0
Delayed Penalty	0	0
PENALTIES		
Number	73	78
Minutes	149	156
Penalties/Game	3.5	3.7
Pen minutes/Game	7.1	7.4
Minor	72	78
Major	1	0
10-minute Misconduct	0	0
Game Misconduct	0	0
Gross Misconduct	0	0
Match	0	0
SHOOTOUTS (Made-Att)	0-0	0-0
ATTENDANCE		
Total	1691	2193
Dates/Avg Per Date	8/211	11/199
Neutral Site #/Avg	2/216	

Goals by Period	1st	2nd	3rd	OT	Total
Gustavus Adolphus	13	28	15	1	57
Opponents	13	14	25	2	54

Saves by Period	1st	2nd	3rd	OT	Total
Gustavus Adolphus	140	153	124	9	426
Opponents	196	197	173	16	582



**The Automated ScoreBook
Gustavus Adolphus Category Leaders (as of Feb 11, 2016)
All games**

## Points	GP	G	A	Pts	Sh
8 A. Eder-Zdechlik	21	14	7	21	73
9 Erica Power	21	8	8	16	70
15 Erin Moes	19	5	5	10	46
14 Katy Fuller	21	4	6	10	53
4 Diana Draayer	19	5	4	9	41
10 Marina Chapman	19	3	5	8	46
21 Laine Fischer	21	3	4	7	51
12 Georgia Eger	17	4	2	6	31
20 Kaitlyn Klein	8	3	3	6	21
3 Emily Reibert	18	4	1	5	31

## Goals	GP	G	A	Pts	Sh
8 A. Eder-Zdechlik	21	14	7	21	73
9 Erica Power	21	8	8	16	70
15 Erin Moes	19	5	5	10	46
4 Diana Draayer	19	5	4	9	41
14 Katy Fuller	21	4	6	10	53
12 Georgia Eger	17	4	2	6	31
3 Emily Reibert	18	4	1	5	31
10 Marina Chapman	19	3	5	8	46
21 Laine Fischer	21	3	4	7	51
20 Kaitlyn Klein	8	3	3	6	21

## Power-Play Goals	GP	PPG
8 A. Eder-Zdechlik	21	3
3 Emily Reibert	18	3
15 Erin Moes	19	2
14 Katy Fuller	21	2

## Short-Handed Goals	GP	SHG
8 A. Eder-Zdechlik	21	4
21 Laine Fischer	21	1
4 Diana Draayer	19	1
10 Marina Chapman	19	1
9 Erica Power	21	1

## Game-Winning Goals	GP	GWG
4 Diana Draayer	19	2
8 A. Eder-Zdechlik	21	2

## Plus/Minus	GP	+/-
2 Courtney Bethune	20	+8
9 Erica Power	21	+5
12 Georgia Eger	17	+5
4 Diana Draayer	19	+3
7 Kalley Spreiter	19	+3
20 Kaitlyn Klein	8	+3
8 A. Eder-Zdechlik	21	+2
15 Erin Moes	19	+1
19 Allie Lewis	21	+1
16 Madison Bergren	21	+1

## Assists	GP	G	A	Pts	Sh
9 Erica Power	21	8	8	16	70
8 A. Eder-Zdechlik	21	14	7	21	73
14 Katy Fuller	21	4	6	10	53
15 Erin Moes	19	5	5	10	46
10 Marina Chapman	19	3	5	8	46
4 Diana Draayer	19	5	4	9	41
21 Laine Fischer	21	3	4	7	51
23 Laura Johnson	17	1	4	5	18
20 Kaitlyn Klein	8	3	3	6	21
2 Courtney Bethune	20	0	3	3	22

## Shots	GP	G	A	Pts	Sh	Sh%
8 A. Eder-Zdechlik	21	14	7	21	73	.192
9 Erica Power	21	8	8	16	70	.114
14 Katy Fuller	21	4	6	10	53	.075
21 Laine Fischer	21	3	4	7	51	.059
15 Erin Moes	19	5	5	10	46	.109
10 Marina Chapman	19	3	5	8	46	.065
4 Diana Draayer	19	5	4	9	41	.122
12 Georgia Eger	17	4	2	6	31	.129
3 Emily Reibert	18	4	1	5	31	.129
19 Allie Lewis	21	1	2	3	28	.036

## Shot Pct.	GP	G	A	Pts	Sh	Sh%
8 A. Eder-Zdechlik	21	14	7	21	73	.192
20 Kaitlyn Klein	8	3	3	6	21	.143
12 Georgia Eger	17	4	2	6	31	.129
3 Emily Reibert	18	4	1	5	31	.129
4 Diana Draayer	19	5	4	9	41	.122
9 Erica Power	21	8	8	16	70	.114
15 Erin Moes	19	5	5	10	46	.109
14 Katy Fuller	21	4	6	10	53	.075
10 Marina Chapman	19	3	5	8	46	.065
18 Allie Stanger	19	1	1	2	16	.062

## Penalties	GP	Pen	Min
14 Katy Fuller	21	8	16
23 Laura Johnson	17	8	16
10 Marina Chapman	19	7	14
12 Georgia Eger	17	6	12
4 Diana Draayer	19	6	12
7 Kalley Spreiter	19	5	10
24 Courtney Potter	20	5	10
15 Erin Moes	19	5	10
16 Madison Bergren	21	4	8
19 Allie Lewis	21	4	8

## Penalty Minutes	GP	Pen	Min
23 Laura Johnson	17	8	16
14 Katy Fuller	21	8	16
10 Marina Chapman	19	7	14
12 Georgia Eger	17	6	12
4 Diana Draayer	19	6	12
15 Erin Moes	19	5	10
7 Kalley Spreiter	19	5	10
24 Courtney Potter	20	5	10
19 Allie Lewis	21	4	8
16 Madison Bergren	21	4	8

**The Automated ScoreBook
Gustavus Adolphus Combined Team Statistics (as of Feb 11, 2016)
All games**

Date	Opponent		Score	Att.
Nov 03	at UW-Superior	Tot	2-2	123
Nov 06	ST. OLAF	W	4-1	257
* Nov 13	#4 UST-WOM	W	6-4	247
* Nov 14	at UST-WOM	L	3-5	200
* 11/20/15	at Augsburg College	Tot	2-2	201
* Nov 21	AUGSBURG COLLEGE	W	4-1	378
Nov 28	vs #2 Elmira	L	1-2	212
Nov 29	vs #1 Plattsburgh	L	3-5	219
* Dec 04	at Saint Benedict	Tot	2-2	257
* Dec 05	SAINT BENEDICT	Lot	2-3	165
Dec 09	at #8 UW-River Falls	L	2-4	168
Dec 11	#8 UW-RIVER FALLS	Lot	1-2	228
Jan 08	at UW-Stevens Point	L	0-4	118
* Jan 16	ST. CATHERINE UNIV.	W	3-0	111
* Jan 15	at St. Catherine Univ.	Tot	1-1	145
* Jan 22	ST. OLAF	W	4-3	152
* Jan 23	at St. Olaf	W	5-0	156
* Jan 29	at Concordia-M'head	W	4-3	289
* Jan 30	at Concordia-M'head	L	5-6	301
* Feb 05	at Saint Mary's	Wot	3-2	235
* Feb 06	SAINT MARY'S	L	0-2	153

TEAM STATISTICS	GAC	OPP
SHOT STATISTICS		
Goals-Shot attempts	57-639	54-480
Shot pct.	.089	.112
Goals/Game	2.7	2.6
Shots/Game	30.4	22.9
POWER PLAYS		
Goals-Power Plays	16-71	13-67
Conversion Percent	.225	.194
Shot Attempts	107	107
Shot Percent	.150	.121
GOAL BREAKDOWN		
Power Play	16	13
Short-handed	8	3
Empty net	1	1
Penalty	0	0
Unassisted	11	10
Overtime	1	2
Shootout	0	0
Delayed Penalty	0	0
PENALTIES		
Number	73	78
Minutes	149	156
Penalties/Game	3.5	3.7
Pen minutes/Game	7.1	7.4
SHOOTOUTS (Made-Att)	0-0	0-0

Record:	Overall	Home	Away	Neutral
ALL GAMES	8-9-4	5-3-0	3-4-4	0-2-0
CONFERENCE	7-4-3	4-2-0	3-2-3	0-0-0
NON-CONFERENCE	1-5-1	1-1-0	0-2-1	0-2-0

##	Player	gp	g	a	pts	sh	sh%	pen-min	pp	sh
8	A. Eder-Zdechlik	21	14	7	21	73	.192	2-4	3	4
9	Erica Power	21	8	8	16	70	.114	1-5	1	1
15	Erin Moes	19	5	5	10	46	.109	5-10	2	0
14	Katy Fuller	21	4	6	10	53	.075	8-16	2	0
4	Diana Draayer	19	5	4	9	41	.122	6-12	1	1
10	Marina Chapman	19	3	5	8	46	.065	7-14	1	1
21	Laine Fischer	21	3	4	7	51	.059	3-6	0	1
12	Georgia Eger	17	4	2	6	31	.129	6-12	1	0
20	Kaitlyn Klein	8	3	3	6	21	.143	1-2	1	0
3	Emily Reibert	18	4	1	5	31	.129	0-0	3	0
23	Laura Johnson	17	1	4	5	18	.056	8-16	1	0
19	Allie Lewis	21	1	2	3	28	.036	4-8	0	0
2	Courtney Bethune	20	0	3	3	22	.000	0-0	0	0
18	Allie Stanger	19	1	1	2	16	.062	1-2	0	0
16	Madison Bergren	21	0	2	2	20	.000	4-8	0	0
24	Courtney Potter	20	0	2	2	21	.000	5-10	0	0
5	Rachel Skoglund	19	1	0	1	20	.050	1-2	0	0
6	Emily Gustafson	11	0	1	1	12	.000	2-4	0	0
7	Kalley Spreiter	19	0	1	1	17	.000	5-10	0	0
22	Brooke Pahlen	11	0	0	0	2	.000	1-2	0	0
TM	TEAM	4	0	0	0	0	.000	3-6	0	0
Total		21	57	61	118	639	.089	73-149	16	8
Opponents		21	54	63	117	480	.112	78-156	13	3

##	Goalie	gp	min	ga	gaavg	saves	save%	w-l-t
1	Lindsey Hibbard	10	455:50	17	2.24	140	.892	5-1-1
35	Amanda DiNella	15	762:16	33	2.60	266	.890	3-8-3
33	Paige Press	5	65:43	3	2.74	20	.870	0-0-0
TM	EMPTY NET	4	5:58	1	-	0	.000	0-0-0
Total		21	1289:47	54	2.51	426	.887	8-9-4
Opponents		21	1289:47	57	2.65	582	.911	9-7-4

Attendance Summary	GAC	Opponent
Total	1691	2193
Dates/Avg Per Date	8/211	11/199
Neutral Site #/Avg	2/216	

Goals by Period	1st	2nd	3rd	OT	Total
Gustavus Adolphus	13	28	15	1	57
Opponents	13	14	25	2	54

Saves by Period	1st	2nd	3rd	OT	Total
Gustavus Adolphus	140	153	124	9	426
Opponents	196	197	173	16	582

**The Automated ScoreBook
Gustavus Adolphus Game Results (as of Feb 11, 2016)
All games**

Date	Opponent		Score	Shots	Overall	Conf	Time	Att.	Goalie of record
Nov 03	at UW-Superior	Tot	2-2	40/29	0-0-1	0-0-0	2:15h	123	Lindsey Hibbard
Nov 06	ST. OLAF	W	4-1	36/25	1-0-1	0-0-0	2:00	257	Amanda DiNella
* Nov 13	#4 UST-WOM	W	6-4	20/26	2-0-1	1-0-0	2:28	247	Lindsey Hibbard
* Nov 14	at UST-WOM	L	3-5	19/34	2-1-1	1-1-0	1:55	200	Amanda DiNella
* 11/20/15	at Augsburg College	Tot	2-2	31/27	2-1-2	1-1-1	2:03	201	Amanda DiNella
* Nov 21	AUGSBURG COLLEGE	W	4-1	31/22	3-1-2	2-1-1	1:51	378	Amanda DiNella
Nov 28	vs #2 Elmira	L	1-2	24/19	3-2-2	2-1-1	1:55	212	Amanda DiNella
Nov 29	vs #1 Plattsburgh	L	3-5	22/39	3-3-2	2-1-1	2:20	219	Amanda DiNella
* Dec 04	at Saint Benedict	Tot	2-2	39/21	3-3-3	2-1-2	2:00	257	Amanda DiNella
* Dec 05	SAINT BENEDICT	Lot	2-3	40/14	3-4-3	2-2-2	2:02	165	Lindsey Hibbard
Dec 09	at #8 UW-River Falls	L	2-4	22/27	3-5-3	2-2-2	1:50	168	Amanda DiNella
Dec 11	#8 UW-RIVER FALLS	Lot	1-2	18/23	3-6-3	2-2-2	2:02	228	Amanda DiNella
Jan 08	at UW-Stevens Point	L	0-4	26/21	3-7-3	2-2-2	1:48	118	Amanda DiNella
* Jan 16	ST. CATHERINE UNIV.	W	3-0	33/15	4-7-3	3-2-2	2:00	111	Amanda DiNella
* Jan 15	at St. Catherine Univ.	Tot	1-1	42/21	4-7-4	3-2-3	1:58	145	Amanda DiNella
* Jan 22	ST. OLAF	W	4-3	36/18	5-7-4	4-2-3	2:05	152	Lindsey Hibbard
* Jan 23	at St. Olaf	W	5-0	33/12	6-7-4	5-2-3	2:09	156	Lindsey Hibbard
* Jan 29	at Concordia-M'head	W	4-3	26/22	7-7-4	6-2-3	2:00	289	Lindsey Hibbard
* Jan 30	at Concordia-M'head	L	5-6	29/26	7-8-4	6-3-3	1:55	301	Amanda DiNella
* Feb 05	at Saint Mary's	Wot	3-2	42/15	8-8-4	7-3-3	2:00	235	Lindsey Hibbard
* Feb 06	SAINT MARY'S	L	0-2	30/24	8-9-4	7-4-3	1:46	153	Amanda DiNella

Team Record	W-L-T	Attendance	Dates	Total	Avg.
Overall:	8-9-4	Total:	21	4315	205
Conference:	7-4-3	Home:	8	1691	211
Home:	5-3-0	Away:	11	2193	199
Away:	3-4-4	Neutral:	2	431	216
Neutral:	0-2-0				
Overtime:	1-2-4				