



2015-16 Gustavus Adolphus College Women's Hockey Media Guide

Gustavus Sports Information

800 W College Ave, St. Peter, MN 56082
 gustavus.edu/athletics
 (507) 933-7647 • sportsinfo@gustavus.edu

Women's Hockey Media Contact
 Nick Hoelmer, Asst. Sports Information Director
 (507) 933-8411 • rhoelmer@gustavus.edu

Follow Gustavus Athletics Online

 **Twitter**
 @GustieAthletics

 **Flickr**
 flickr.com/photos/gogusties

 **Facebook**
 facebook.com/GustieAthletics

 **YouTube**
 youtube.com/gustavusathletics

 **Snap Chat**
 Username: Gusties

 **Instagram**
 @gustieathletics



Gustavus Adolphus College

Golden Gusties
 (3-6-3 Overall, 2-2-2 MIAC)
 vs.



UW-Stevens Point

Pointers
 (6-6-2 Overall, 2-2-2 WIAC)

Game 13

Date: Friday, January 8 • **Time:** 7 p.m. **Location:** Stevens Point, Wis.

Arena: Multi-Activity Center

Live Video: <http://portal.stretchinternet.com/uwsp/>

Live Stats: <http://www.sidearmstats.com/uwsp/whockey/>

2015-16 SCHEDULE

DATE	OPPONENT	TIME/RESULT
NOVEMBER		
3	UW-Superior	T 2-2
6	ST. OLAF COLLEGE (Non-Conference)	W 4-1
13	NO. 4 UNIVERSITY OF ST. THOMAS	W 6-4
14	No. 4 University of St. Thomas	L 3-5
20	Augsburg College	T 2-2
21	AUGSBURG COLLEGE	W 4-2
28	No. 2 Elmira College (Panther Classic)	L 1-2
29	No. 1 Plattsburgh State (Panther Classic)	L 3-5
DECEMBER		
4	College of Saint Benedict	T 2-2
5	COLLEGE OF SAINT BENEDICT	L 2-3
9	No. 8 UW-River Falls	L 2-4
11	NO. 8 UW-RIVER FALLS	L 1-2
JANUARY		
8	UW-Stevens Point	7 p.m.
15	St. Catherine University	7:30 p.m.
16	ST. CATHERINE UNIVERSITY	2 p.m.
22	ST. OLAF COLLEGE	7 P.M.
23	St. Olaf College	7:30 p.m.
29	Concordia College	7 p.m.
30	Concordia College	2 p.m.
FEBRUARY		
5	Saint Mary's University	7 p.m.
6	SAINT MARY'S UNIVERSITY	2 P.M.
12	Bethel University	7 p.m.
13	BETHEL UNIVERSITY	2 P.M.
19	Hamline University	7 p.m.
20	HAMLIN UNIVERSITY	2 P.M.

HOME GAMES IN BOLD AND CAPS

Setting The Scene: The Gustavus Adolphus College women's hockey team will compete Friday, Jan. 8 against the University of Wisconsin-Stevens Point. in a 7 p.m. matchup at the Multi Activity Center. Gustavus enters the game with a 3-6-3 overall record, while UW-Stevens Point comes into the game at 6-6-2 overall record.

Last Time Out: Gustavus closed out the 2015 calendar year when they competed in a tough series against No. 7 UW-River Falls on Dec. 9 and Dec. 11 2015. In Wednesday's game at River Falls, Wisconsin the Gusties skated to 4-2 defeat with the Falcons. Despite two third period goals, the Black and Gold were not able to overcome a four-goal second period from UW-River Falls. In the third period, Katie Fuller scored at the 8:39 mark with help from Emily Reibert (Sr., Inver Grove Heights, Minn.) and Marina Chapman (Fy., South Haven, Minn.). Gustavus fired back eight minutes later, when Laine Fischer (Fy., Northfield, Minn.) scored her second goal of the season off an assist from Erica Power (So., Lakeville, Minn.).

The Gusties suffered their second loss to the Falcons in St. Peter on Dec. 11, in a 2-1 overtime heartbreaker. At the 4:56 mark of the second period, the Falcons were first on the board, but the Gusties struck back quickly when Katy Fuller gained control of a loose puck and passed it to Erica Power, who proceeded to backhand a goal over the Falcon goalie. The Gusties kept the visitors out of the goal to force overtime, where UW-River Falls took control just 20 seconds into the period, scoring the game winning goal, which gave the Falcon's the series sweep.

The Pointers are coming off a 6-2 loss to the University of St. Thomas at the end of the December, which caused them to fall to 6-6-2 overall. Although the Pointers outshot the Tommies 32-25, it was not enough to propel the Pointers past No. 5 St. Thomas.

13 MIAC Championships • 11 NCAA Tournament Appearances

The Match Up Statistical Comparison

Gustavus		UW-Stevens Point
3.17 (1st)	Goals For	2.00 (2nd)
2.83 (8th)	Goals Against	2.50 (3rd)
20.8% (4th)	Power Play	20.0% (1st)
80.0% (8th)	Penalty Kill	85.0% (4th)
+5 (1st)	Special Teams Net	+1 (2nd)
7.5 (6th)	Penalty Minutes	8.8 (2nd)

2015-16 season averages with MIAC ranks (10 teams) and WIAC ranks (4 teams)

The Series Gustavus vs. UW-Stevens Point

All-Time Record	14-11-4
Last Meeting	W 3-1
Current Streak	L2

Coach Mike Carroll

Overall Record at Gustavus	359-89-30
vs. Stevens Point	14-11-4

Coach Anne Ninnemann

Overall Record at UW-River Falls	146-77-27
----------------------------------	-----------

Last Five Seasons	8-1-0
-------------------	-------

<u>Date</u>	<u>Location</u>	<u>Result</u>
12/13/14	St. Peter, Minn.	W 3-1
1/11/14	Stevens Point, Wis.	W 2-1
1/10/14	Stevens Point, Wis.	L 2-5
1/12/13	St. Peter, Minn.	W 1-0
1/11/13	St. Peter, Minn.	W 7-3
1/7/12	Stevens Point, Wis.	W 5-2
1/6/12	Stevens Point, Wis.	W 6-0
2/15/11	St. Pter, Minn	W 5-1
12/9/10	Stevens Point, Wis.	W 2-0

** - Denotes NCAA Tournament Quarterfinal Round

Series Snapshot: This week's contest with UW-Stevens Point marks the 30th meeting between the Gusties and Pointers in women's hockey. The Gusties hold the advantage in the all-time series with a record of 14-11-4, including last season's 3-1 victory. Highlights from the game were the three third period goals, including two from Allison Eder-Zdechlik and one from Emily Reibert.

About The Pointers: UW-Stevens Point enters the contest with a 6-6-2 overall record and are currently ranked second in the WIAC behind No. 7 UW-River Falls.

The Pointers are led by seniors Emily Lester and Kat Nejedlo. Lester has a team-leading 12 points off seven goals and five assists this season, making her 3rd highest in the WIAC, while Nejedlo is ranked first in the WIAC with 10 assists.

Senior Leadership: In order to bring more experienced leadership to the team, the Gusties have named senior forward Allison Eder-Zdechlik as a captain for the remainder of the season. Eder-Zdechlik leads the MIAC with nine goals followed by two assists on the year. In her career at Gustavus she has played 79 games, scored 42 goals with 28 assists putting her in the record book for most goals scored and games played.

Offensive Threat: After the first half of the season, Gustavus has proven to be top scorer in the MIAC. The Gusties are currently ranked third in the conference with 32 goals this season, only two less than leaders St. Thomas and Concordia. This also puts them eight goals ahead of fourth ranked Hamline. This season the Gusties have averaged 2.70 goals per game.

Gustavus Embarks On 19th Season Of Women's Hockey: The Gustavus women's hockey team is currently in its 19th season. Founded in 1997, the Gusties have attained an all-time record of 389-108-31, which stands as the second winningest program in all of NCAA Division III women's hockey. The Gustie women have won 13 MIAC titles in the 18 years of women's hockey in the conference. Those 14 titles rank first in front of St. Thomas (3), and Augsburg and Saint Mary's, who each have two. Gustavus has also earned the MIAC Playoff crown a total of 11 times, 10 of which have come in the past 12 years and led to 11 NCAA Tournament appearances.

Wearing The "C": In the 18-year history of the Gustavus women's hockey program, 36 players have earned the honor of being a captain. This year, three new players earn that title in senior Allison Eder-Zdechlik, junior Allie Lewis, and sophomore Diana Draayer.

Home Grown Talent: Of the 23 players on this year's roster, 20 are natives of Minnesota. The only players who reside outside the State of Hockey are Courtney Bethune, who hails from Fort Frances, Ontario, Allie Lewis, who is a native of Kearney, Nebraska, and Amanda DiNella from Oakbrook Terrace, Illinois.

Scorers Return: Despite losing two of its top four scorers from its 2014-15 squad, Gustavus will return 62 percent of its scoring from last season, including sophomore Erica Power who led last year's squad with 27 points (9G, 18A) and Allison Eder-Zdechlik who finished tied for second on the team with 20 points (9G, 11A).

A Balanced Approach: Thirteen of the Gusties' 23 players in 2015-16 are returners, and the Gusties also welcome back three of their five All-MIAC selections. However, the Gusties also welcome in 10 first-years, including five forwards, three defenders, and two goalies.



Gustavus Quick Facts

Location:	St. Peter, Minnesota
Address:	800 West College Ave. St. Peter, MN 56082
Founded:	1862
Enrollment:	2,456
Nickname:	Golden Gusties
School Colors:	Black and Gold
Home Ice:	Don Roberts Ice Rink
NCAA Affiliation:	NCAA Division III
Conference:	Minnesota Intercollegiate Athletic
President:	Rebecca M. Bergman
Athletic Director:	Tom Brown
Assistant Athletic Director:	Jared Phillips
Athletic Trainer:	Troy Banse
Equipment Manager:	Jed Friedrich
Sports Information Director:	CJ Siewert
Asst. Sports Information Director:	Nick Hoelmer

Gustavus Hockey Quick Facts

2014-15 Record:	19-5-2
2014-15 MIAC Record/Finish:	15-2-1 / 1st
All-Time Record:	389-106-31
All-Time MIAC Record:	258-31-14
MIAC Championships:	13
Returners/First-years:	13/10
All-MIAC Honorees Returning/Lost:	3/2

Gustavus Under Head Coach Mike Carroll

Year	Overall	MIAC	Conference Finish
1999-00	18-10-1	12-5-1	3rd
2000-01	23-6-1	16-2-0	1st
2001-02	23-5-2	18-0-1	1st
2002-03	14-9-4	11-4-3	3rd
2003-04	22-6-0	16-2-0	2nd
2004-05	25-4-1	17-1-0	1st
2005-06	22-5-2	17-0-1	1st
2006-07	25-3-0	17-1-0	1st
2007-08	25-3-0	18-0-0	1st
2008-09	22-2-4	16-0-2	1st
2009-10	26-6-2	14-3-1	1st
2010-11	22-5-3	14-2-2	1st
2011-12	24-4-2	16-1-1	1st
2012-13	27-2-1	18-0-0	1st
2013-14	17-8-2	14-4-0	2nd
2014-15	19-5-2	15-2-1	1st
2015-16	3-6-3	2-2-2	--
Totals	353-89-30	251-29-15	12 MIAC Titles

Around The League

MIAC Standings

School	Points	MIAC	Overall
Concordia	10	5-1-0	7-4-0
Augsburg	9	4-1-1	5-5-1
St. Thomas	9	4-1-1	9-1-1
Bethel	8	3-1-2	3-5-2
Hamline	7	3-2-1	5-4-2
Saint Mary's	7	3-2-1	4-5-2
Gustavus	6	2-2-2	3-6-3
Saint Benedict	3	1-4-1	3-6-1
St. Olaf	1	0-5-1	0-9-1
St. Catherine	0	0-6-0	0-7-2

This Weekend in the MIAC

Friday, January 8

Bethel at Concordia (Wis) | 3 p.m.

UW-Eau Claire at Hamline | 2 p.m.

Bethel at Concordia (Wis) | 3 p.m.

St. Olaf at Finlandia | 3:30 p.m.

UW-River Falls at Concordia | 7 p.m.

Bethel at Concordia (Wis) | 7p.m.

Gustavus at UW-Stevens Point | 7 p.m.

UW-Superior at St. Catherine | 7:30 p.m.

St. Norbert at Saint Benedict | 7:30 p.m.

Saturday, January 9

Concordia at UW-Superior | 2 p.m.

St. Catherine at UW-Superior | 1 p.m.

UW-River Falls at Concordia | 2 p.m.

St. Olaf at Adrian | 3 p.m.

Bethel at Concordia (Wis.) | 3 p.m.

St. Norbert at Saint Benedict | 3 p.m.

Stevenson at Augsburg | 7 p.m.

Saint Mary's at Lake Forest | 7 p.m.

MIAC Athlete-of-the-Week



Angel Hillstrom

Fy., Goalie

Robbinsdale, Minn. / Cooper

Opponent	GA	S	W/L
vs. No. 9 Gustavus	2	37	W
at No. 9 Gustavus	2	38	W
Totals	4	75	2W

USCHO.com Div. III Poll

Rank	School	Overall	Points	Last
1	Plattsburgh (15)	12-0-0	150	1
2	Elmira	9-1-0	132	2
3	Lake Forest	10-0-1	103	5
4	Adrian	8-2-0	100	4
5	St. Thomas	9-1-1	89	5
6	Amherst	8-0-0	73	6
7	Wisconsin-River Falls	10-2-0	65	6
8	Middlebury	4-2-1	36	8
9	Norwich	7-3-0	32	10
10	Castleton	10-2-2	28	8

Gustavus Record When:

At home	3-2-0
On the road	0-2-3
Neutral Site	0-2-0
vs. MIAC opponents	2-2-2
vs. Non-conference opponents	1-4-1
vs. Top 10 opponents	1-5-0
GAC scores 4 or more goals	3-0-0
GAC scores 3 goals	0-2-0
GAC scores 2 or fewer goals	0-2-5
GAC scores first	3-1-1
Opponent scores first	0-5-2
GAC leads after 1st period	2-0-1
Opponent leads after 1st period	0-1-1
Tied after 1st period	1-4-1
GAC leads after 2nd period	3-2-0
Opponent leads after 2nd period	0-3-0
Tied after 2nd period	0-1-2
In overtime	0-2-3
Games decided by one goal	0-3-0
Games decided by two goals	1-3-0
Games decided by three goals	2-0-0
Games decided by four or more	0-0-0
GAC scores on the power play	3-4-2
GAC scoreless on the power play	0-3-0
GAC scores two or more PP goals	0-0-2
GAC outshoots opponent	2-2-3
GAC outshot by opponent	1-4-0
Shots equal	0-0-0
Tuesday Games	0-0-1
Wednesday Games	0-1-0
Friday Games	2-1-2
Saturday Games	1-3-0
Sunday Games	0-1-0
In November	3-3-2
In December	0-3-1
In January	0-0-0
In February	0-0-0
In March	0-0-0
Following a win	1-2-0
Following a loss	0-3-2
Following a tie	2-1-0
Night games	2-4-3
Day games	1-2-0

Who's Hot

Scoring vs. UW-River Falls

Player	Games	Goals	Assists	Points	Point Streak
Erica Power	2	1	1	2	4
Katy Fuller	2	1	1	2	4
Laine Fischer	2	1	0	1	2

Goaltending vs. UW-River Falls

Player	Record	Minutes	GA	Saves	Scoreless Str.
Amanda DiNella	0-2-0	100:00	4	37	--
Paige Press	0-1-0	20:00	0	7	20:00

2015-16 Season By The Numbers

Largest Victory	3 (2x): last vs. Augsburg (11/21/15)
Largest Defeat	2 (3x) Last: at No. 7 UW-River Falls (12/9/15)
Largest First Period Lead	2: vs. Augsburg (11/21/15)
Largest First Period Deficit	2: at St. Thomas (11/14/15)
Largest Second Period Lead	4: vs. St. Thomas (11/13/15)
Largest Second Period Deficit	4: at No. 7 UW-River Falls (12/9/15)
Most Goals Scored	6: vs. St. Thomas (11/13/15)
Fewest Goals Scored	1 (2x) vs. No. 7 UW-River Falls (12/11/15)
Most Goals Allowed	5 (2x) Last: vs. No. 1 Plattsburgh (11/29/15)
Fewest Goals Allowed	1 (2x): last vs. Augsburg (11/21/15)
Largest Lead	4: vs. St. Thomas (11/13/15)
Largest Lead On Road	1 (3x): last at Saint Benedict (12/4/15)
Largest Lead At Home	4: vs. St. Thomas (11/13/15)
Largest Blown Lead	2: vs. No. 1 Plattsburgh (11/29/15)
Largest Deficit	2 (3x) Last: at No. 7 UW-River Falls (12/9/15)
Largest Deficit On Road	2 (2x): at No. 7 UW-River Falls (12/9/15)
Largest Deficit At Home	1 (2x) vs. No. 7 UW-River Falls (12/11/15)
Largest Comeback-Win/Tie	1 (2x): last at Augsburg (11/20/15)



Last Time It Happened

COMEBACKS

GAC won when trailing after two periods

December 13, 2014 vs. UW-Stevens Point. Trailed 1-0 early in the third, Gustavus scored three consecutive goals to capture a 3-1 victory.

Opponent won when trailing after two periods

Dec. 5, 2015 vs. Saint Benedict. Gustavus led CSB 2-1 going into third period, but Blazers scored once in third and once in overtime to earn 3-2 victory

Overcame 1-goal deficit and won

GAC: February 21, 2015 vs. Bethel University. Trailed 2-1 after the first, Gustavus won 5-2.
OPP: Dec. 5, 2015 vs. Saint Benedict. Gustavus led 2-1 after second, Saint Ben's won 3-2

Overcame 2-goal deficit and won

GAC: Feb. 29, 2013 vs. Bethel. Gusties trailed 2-0 after two, but came back with three goals in the third for a 3-2 win.

OPP: Nov. 29, 2015 vs. No. 1 Plattsburgh State. Gustavus led Plattsburgh 3-1 going into third period, but Cardinals scored four goals in third period to earn 5-3 win.

Overcame a 3-goal deficit and won

GAC: March 1, 1998 vs. University of Minnesota Club. Gusties scored one in the second and three in the third to win 4-3.

OPP: Never

OVERTIME GAMES

Won overtime game

GAC: March 1, 2012 vs Bethel. Courtney Boucher scored 6:25 in to overtime to win 1-0 and advance to the MIAC Championship.

OPP: Dec. 5, 2015 vs. Saint Benedict

Tied overtime game

Dec. 4, 2015 at Saint Benedict

SERIES SWEEPS

Swept a 2-game regular season home-home series

GAC: Feb. 6 and 7, 2015 vs. St. Catherine. (4-1 Friday in St. Paul, 1-0 Saturday in St. Peter)

OPP: Jan. 31-Feb. 1, 2014 vs. Saint Benedict. (4-2 Friday night in St. Peter, 4-2 again on Saturday in St. Cloud)

Swept a 2-game regular season home series

GAC: Nov. 14-15, 2014 vs. Concordia. (3-1, 2-0)

OPP: Never

Swept a 2-game regular season away series

GAC: Nov. 15-16, 2013 at Concordia. (4-1, 2-0)

OPP: Never. (MIAC Playoffs: March 10-11, 2000 at Augsburg. (4-1, 2-1)

SHUTOUTS

Last Shutout

GAC: Feb. 7, 2015 vs. St. Catherine, 1-0

OPP: Jan. 9, 2015 vs. Adrian, 1-0

Last Home Shutout

GAC: Feb. 7, 2015 vs. St. Catherine, 1-0

OPP: Jan. 9, 2015 vs. Adrian 1-0

Last Road Shutout

GAC: Jan. 31, 2015 vs. Saint Benedict, 2-0

OPP: Mar. 8, 2014 vs. St. Thomas 2-0

Scoreless Ties (2 in program history)

Jan. 14, 2010 vs. Trinity (Conn.)

Feb. 17, 2009 at UW-Stevens Point

EXTRA ATTACKER GOALS

Scored an extra attacker goal

GAC: Nov. 30, 2014 vs. Middlebury. Lydia Wagner scored w/ 39 sec. left

OPP: Dec. 5, 2015 vs. Saint Benedict. CSB won 3-2

SHORTHANDED GOALS

Scored a shorthanded goal

GAC: Nov. 21, 2015 vs. St. Thomas. Allison Eder-Zdechlik scored shorthanded goal in first period to put Gustavus up 2-0.

OPP: Feb. 13, 2015 at St. Thomas. Tara Baago scored shorthanded in the first period of a 5-2 win for the Gusties.

Scored two shorthanded goals

GAC: Nov. 22, 2008 at St. Olaf. Melissa Mackley scored two short-handed goals in the third period. Gusties won 4-2.

OPP: Never

EMPTY NET GOALS

Scored an empty net goal

GAC: Nov. 21, 2015 vs. Augsburg. Allison Eder-Zdechlik scored EN at 18:58 in 4-1 win for the Gusties in St. Peter.

OPP: Feb. 20, 2015 vs. Bethel. Kathryn Larson scored EN at 18:40 of a 4-2 Royal win in Saint Peter.

TEAM GOALS IN A PERIOD

Team scored 5 or more goals in a period

GAC: Feb. 23, 2013 vs. Saint Benedict. The Gusties scored six goals in the second period on their way to an 8-2 victory in St. Peter.

OPP: Dec. 3, 1998 at the University of Minnesota (Mariucci Arena. Gophers scored five goals in the first period and won 8-1.

PENALTY SHOTS

Scored on a penalty shot

GAC: Never.

OPP: March 19, 2011 vs. Middlebury (NCAA 3rd Place Game, Rochester, N.Y.). Penalty shot goal scored after Lindsey Hjelm checking penalty in the second period. Middlebury won 5-0.

PENALTIES

Not penalized

GAC: Jan. 24, 2015 at Saint Mary's. Gustavus won 1-0.

OPP: Dec. 2, 2000 at St. Catherine. St. Kate's won 4-3.

Neither team was penalized

Jan. 30, 1998 at Saint Mary's. Gusties won 6-2.

HAT TRICKS

Last individual 3-goal game

GAC: Nov. 21, 2015 vs. Augsburg. Allison Eder-Zdechlik scored three goals (one even, one shorthanded, one empty net) in a 4-1 Gustavus win in St. Peter.

OPP: Feb. 20, 2015 vs. Bethel. Kathryn Larson scored three goals in 4-2 Royal win.

Last individual 4-goal game

GAC: Dec. 2, 2011 at Augsburg. Allie Schwab scored three PP goals and an even goal in a 9-0 shutout.

OPP: Never.

All goals scored by one player (3+ Goals)

GAC: Never.

OPP: Dec. 2, 2006 at Hamline. Melanie Levielle scored all three goals in a 4-3 loss.

SHOTS ON GOAL

Fewer than 15 shots in a game

GAC: Dec. 3, 1998 at the University of Minnesota, 11 shots. Minnesota won 8-1.

OPP: Dec. 5, 2015 vs. Saint Benedict, 14 shots. CSB won 3-2.

Fewer than 20 shots in a game

GAC: DEC. 11, 2015 VS. UW-RIVER FALLS, 18 shots. Gustavus lost 2-1.

OPP: Dec. 5, 2015 vs. Saint Benedict, 14 shots. CSB won 3-2.

40 or more shots in a game

GAC: Dec. 5, 2015 vs. Saint Benedict, 40 shots. CSB won 3-2.

OPP: Nov. 29, 2014 at Plattsburgh, 42 shots. Tied 4-4.

50 or more shots in a game

GAC: Feb. 16, 2013 vs. St. Olaf, 51 shots. Gustavus won 6-2.

OPP: Nov. 23, 1998 vs. the University of Minnesota: 51 shots. Minnesota won 6-0.

60 or more shots in a game

GAC: Feb. 15, 2013 at St. Olaf, 61 shots. Gustavus won 7-4.

OPP: Feb. 5, 1998 at Boston College, 65 shots. BC won 10-1.

SINGLE GAME POINTS

Player had four points in a game

GAC: Nov. 13, 2014 vs. St. Thomas. Diana Draayer scored three goals, one assist in 6-4 win over St. Thomas.

OPP: Mar. 18, 2011 vs. Norwich (NCAA Semifinals). Julie Fortier scored three goals with an assist in a 5-4 Norwich victory.

Player had five points in a game

GAC: Dec. 2, 2011 at Augsburg. Allie Schwab scored three PP goals and an even goal with an assist in a 9-0 shutout.

OPP: Mar. 18, 2005 vs. Middlebury. (NCAA Semifinals) Lorna Griffis scored two goals with three assists in a 7-3 Middlebury win.

Player had six or more points in a game

GAC: Feb. 11, 2005 at St. Catherine. Andrea Peterson scored two goals with six assists in a 13-0 win. (Most individual points in a game in program history)

OPP: Jan. 30, 1999 at Middlebury. Michelle Labbe scored three goals with three assists in a 8-0 Middlebury win.



Carroll At A Glance

Hometown

- Edina, Minnesota

Education

- Bachelor's Degree: Recreation, Parks, and Leisure Services (Minnesota State, Mankato '82)

Family

- Wife: Terri
- Children: Matt and Mike

Coaching

- 1983-84 – Assistant Coach, University of St. Thomas
- 1984-85 – Assistant Coach, Fergus Falls High School
- 1986-87 – Head Coach, Fergus Falls Community College
- 1990-99 – Head Coach, Mankato West High School
- 1999-Present – Head Coach, Gustavus Adolphus College

Years At Gustavus: 16

All-time Record: 353-89-30

All-time MIAC Record: 251-31-15

MIAC Titles: 12

MIAC Playoff Titles: 11

NCAA Tournaments: 11

NCAA Tournament Record: 8-16-0

Final Fours: 7

Most Wins In A Season: 27 (2012-13)

Fewest Wins In A Season: 14 (2002-03)

*** All-time winningest coach in Gustavus women's hockey history.

Head Coach Mike Carroll

Mike Carroll is in his 17th season as the women's head hockey coach at Gustavus. Within his tenure behind the Gustie bench, Carroll has turned Gustavus women's hockey into one of the most successful programs in NCAA Division III. He has compiled an overall record of 353-89-30 in 16 seasons and has the most coaching victories in the history of the program.

Last season, the Gustavus women's hockey team regained its spot atop of the MIAC standings, finishing first in the final conference standings with 32 points at 15-2-1. However, the Gusties suffered a 6-3 loss to Bethel University in the MIAC Playoff Semifinals, which brought their season to an end and the team finished with an overall record of 19-5-2.

Carroll has directed the Gusties to 12 MIAC regular season titles (2000-01, 2001-02, 2004-05, 2005-06, 2006-07, 2007-08, 2008-09, 2009-10, 2010-11, 2011-12, 2012-13) and has been named the MIAC Coach-of-the-Year six times (2001-02, 2003-04, 2004-05, 2005-06, 2010-11, 2012-13, 2014-15). In addition to coaching 37 players who have earned All-Conference honors 64 times, he has coached five MIAC Players-of-the-Year in Sarah Garrison, Andrea Peterson, Stefanie Ubl, Allie Schwab, Lindsey Hjelm. Carroll has also worked with 14 players who have earned All-America distinction 22 times and two American Hockey Coaches Association Players-of-the-Year, including four-time MIAC Player-of-the-Year and four-time All-American Andrea Peterson.

Prior to coming to Gustavus, Carroll served as the head boys' hockey coach at Mankato West High School from 1991 to 1999. Carroll's college coaching resume included a stint as head men's hockey coach at Fergus Falls Community College from 1986 to 1987 as well as a season as the assistant men's coach at the University of St. Thomas in 1983.

Carroll, an Edina, Minnesota native, competed in hockey and baseball at Mankato State. After graduating with a degree in municipal recreation in 1982, Carroll played professional baseball in the Montreal Expos organization for two years.

Mike and his wife, Terri, live in Mankato and have two sons, Matt and Mike.

2015-16 Roster Breakdown

Returners (13)

Courtney Bethune
Diana Draayer
Allison Eder-Zdechlik
Katy Fuller
Emily Gustafson
Lindsey Hibbard
Laura Johnson
Kaitlyn Klein
Allie Lewis
Courtney Potter
Erica Power
Emily Reibert
Rachel Skoglund

Newcomers (10)

Kalley Spreiter
Marina Chapman
Georgia Eger
Erin Moes
Madison Bergren
Allie Stanger
Laine Fischer
Brooke Pahlen
Paige Press
Amanda DiNella

By Class

Seniors (3)

Allison Eder-Zdechlik
Lindsey Hibbard
Emily Reibert

Juniors (4)

Courtney Bethune
Emily Gustafson
Allie Lewis
Courtney Potter

Sophomores (6)

Diana Draayer
Katy Fuller
Laura Johnson
Kaitlyn Klein
Erica Power
Rachel Skoglund

First-Years (10)

Madison Bergren
Marina Chapman
Amanda DiNella
Georgia Eger
Laine Fischer
Erin Moes
Brooke Pahlen
Paige Press
Kalley Spreiter

2015-16 Numerical Roster

No.	Name	Yr.	Pos.	Hgt.	Hometown/High School
1	Lindsey Hibbard	Sr.	G	5-6	Princeton, Minn./Princeton
2	Courtney Bethune	Jr.	D	5-8	Fort Frances, Ont./Warroad
3	Emily Reibert	Sr.	F	5-5	Inver Grove Heights, Minn./South St. Paul
4	Diana Draayer	So.	F	5-5	Deephaven, Minn./Minnetonka
5	Rachel Skoglund	So.	D	5-2	Forest Lake, Minn./Forest Lake
6	Emily Gustafson	Jr.	F	5-1	Esko, Minn./Esko
7	Kalley Spreiter	Fy.	F	5-5	Litchfield, Minn./Litchfield
8	Allison Eder-Zdechlik	Sr.	F	5-4	Stillwater, Minn./Stillwater
9	Erica Power	So.	F	5-6	Lakeville, Minn./Apple Valley
10	Marina Chapman	Fy.	D	5-9	South Haven, Minn./Annandale
12	Georgia Eger	Fy.	F	5-3	Stillwater, Minn./Stillwater
14	Katy Fuller	So.	F	5-5	Minneapolis, Minn./Southwest
15	Erin Moes	Fy.	D	5-5	Hastings, Minn./Hastings
16	Madison Bergren	Fy.	F	5-6	Mahtomedi, Minn./Mahtomedi
18	Allie Stanger	Fy.	F	5-11	Paynesville, Minn./Paynesville
19	Allie Lewis	Jr.	F	5-3	Kearney, Neb./Shattuck-Saint Mary's
20	Kaitlyn Klein	So.	F	5-6	Plymouth, Minn./Wayzata
21	Laine Fischer	Fy.	D	5-8	Northfield, Minn./Northfield
22	Brooke Pahlen	Fy.	F	5-6	Lakeville, Minn./Eastview
23	Laura Johnson	So.	D	5-2	Chanhassen, Minn./Chanhassen
24	Courtney Potter	Jr.	D	5-2	Dayton, Minn./Champlin Park
33	Paige Press	Fy.	G	5-3	Cottage Grove, Minn./Park
35	Amanda DiNella	Fy.	G	5-4	Oakbrook Terrace, Ill./Willowbrook

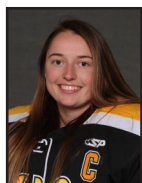
Head Coach: Mike Carroll (17th season)

Assistant Coaches: Courtney Boucher, Steve Carroll, Pat Carroll

Alphabetical Roster/Pronunciation Guide

NO.	NAME	Pronunciation
16	Bergren, Madison	
2	Bethune, Courtney	beth-OON
10	Chapman, Marina	
35	DiNella, Amanda	
4	Draayer, Diana	DRAY-er
8	Eder-Zdechlik, Allison	ee-der-ZED-lick
12	Eger, Georgia	EGG-er
21	Fischer, Laine	
14	Fuller, Katy	
6	Gustafson, Emily	GUST-uhf-son
1	Hibbard, Lindsey	
23	Johnson, Laura	
20	Klein, Kaitlyn	Kline
19	Lewis, Allie	
15	Moes, Erin	
22	Pahlen, Brooke	PAY-len
9	Power, Erica	
24	Potter, Courtney	
35	Press, Paige	
3	Reibert, Emily	RYE-bert
5	Skoglund, Rachel	SKOHG-lund
7	Spreiter, Kalley	SPRITE-er
18	Stanger, Allie	

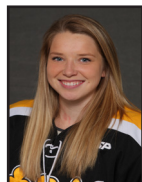
Player Profiles



#1 Lindsey Hibbard
Sr., Goaltender
Princeton, Minn./Princeton

Season Numbers

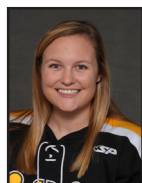
GP	GAA	Save Pct.	Record
5	2.72	.890	1-1-1



#2 Courtney Bethune
Jr., Defender
Fort Frances, Ont./Warroad

Season Numbers

GP	Goals	Assists	Points
11	0	4	4



#3 Emily Reibert
Sr., Forward
Inver Grove Heights, Minn./South St. Paul

Season Numbers

GP	Goals	Assists	Points
9	0	1	1



#4 Diana Draayer
So., Forward
Deephaven, Minn./Minnetonka

Season Numbers

GP	Goals	Assists	Points
10	4	3	7



#5 Rachel Skoglund
So., Defender
Forest Lake, Minn./Forest Lake

Season Numbers

GP	Goals	Assists	Points
10	0	0	0



#6 Emily Gustafson
Jr., Forward
Esko, Minn./Esko

Season Numbers

GP	Goals	Assists	Points
7	0	1	1



#7 Kalley Spreiter
Fy., Forward
Litchfield, Minn./Litchfield

Season Numbers

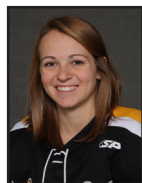
GP	Goals	Assists	Points
11	0	0	0



#8 Allison Eder-Zdechlik
Sr., Forward
Stillwater, Minn./Stillwater

Season Numbers

GP	Goals	Assists	Points
12	9	2	11



#9 Erica Power
So., Forward
Lakeville, Minn./Apple Valley

Season Numbers

GP	Goals	Assists	Points
12	5	5	11

Player Profiles



#10 Marina Chapman
 Fy., Defender
 South Haven, Minn./Annandale

Season Numbers

GP	Goals	Assists	Points
12	1	2	3



#12 Georgia Eger
 Fy., Forward
 Stillwater, Minn./Stillwater

Season Numbers

GP	Goals	Assists	Points
8	2	0	2



#14 Katy Fuller
 So., Forward
 Minneapolis, Minn./Southwest

Season Numbers

GP	Goals	Assists	Points
12	4	3	7



#15 Erin Moes
 Fy., Defender
 Hastings, Minn./Hastings

Season Numbers

GP	Goals	Assists	Points
10	1	3	4



#16 Madison Bergren
 Fy., Forward
 Mahtomedi, Minn./Mahtomedi

Season Numbers

GP	Goals	Assists	Points
12	0	2	2



#18 Allie Stanger
 Fy., Forward
 Paynesville, Minn./Paynesville

Season Numbers

GP	Goals	Assists	Points
10	0	0	0



#19 Allie Lewis
 Jr., Forward
 Kearney, Neb./Shattuck-St. Mary's

Season Numbers

GP	Goals	Assists	Points
12	0	1	1



#20 Kaitlyn Klein
 So., Forward
 Plymouth, Minn./Wayzata

Season Numbers

GP	Goals	Assists	Points
8	3	3	6



#21 Laine Fischer
 Fy., Defender
 Northfield, Minn./Northfield

Season Numbers

GP	Goals	Assists	Points
12	2	2	4

Player Profiles



#22 Brooke Pahlen
 Fr., Forward
 Lakeville, Minn./Eastview

Season Numbers

GP	Goals	Assists	Points
7	0	0	0



#23 Laura Johnson
 So., Defender
 Chanhassen, Minn./Chanhassen

Season Numbers

GP	Goals	Assists	Points
8	1	1	2



#24 Courtney Potter
 Jr., Defender
 Dayton, Minn./Champlin Park

Season Numbers

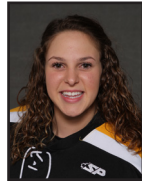
GP	Goals	Assists	Points
11	0	2	2



#33 Paige Press
 Fr., Goaltender
 Cottage Grove, Minn./Park

Season Numbers

GP	GAA	Save Pct.	Record
2	0.00	1.000	0-0-0



#35 Amanda DiNella
 Fr., Goaltender
 Oakbrook Terrace, Ill./Willowbrook

Season Numbers

GP	GAA	Save Pct.	Record
9	2.80	.889	2-5-2

The Automated ScoreBook
Gustavus Adolphus Overall Team Statistics (as of Jan 06, 2016)
All games

Overall: 3-6-3 Conf: 2-2-2 Home: 3-2-0 Away: 0-2-3 Neut: 0-2-0

TEAM STATISTICS	GAC	OPP
SHOT STATISTICS		
Goals-Shot attempts	32-342	33-306
Shot pct.	.094	.108
Goals/Game	2.7	2.8
Shots/Game	28.5	25.5
Assists	34	41
POWER PLAYS		
Goals-Power Plays	9-47	9-44
Conversion Percent	.191	.205
Shot Attempts	64	74
Shot Percent	.141	.122
GOAL BREAKDOWN		
Total Goals	32	33
Power Play	9	9
Short-handed	5	2
Empty net	1	0
Penalty	0	0
Unassisted	8	8
Overtime	0	2
Shootout	0	0
Delayed Penalty	0	0
PENALTIES		
Number	47	50
Minutes	97	100
Penalties/Game	3.9	4.2
Pen minutes/Game	8.1	8.3
Minor	46	50
Major	1	0
10-minute Misconduct	0	0
Game Misconduct	0	0
Gross Misconduct	0	0
Match	0	0
SHOOTOUTS (Made-Att)	0-0	0-0
ATTENDANCE		
Total	1275	949
Dates/Avg Per Date	5/255	5/190
Neutral Site #/Avg	2/216	

Goals by Period	1st	2nd	3rd	OT	Total
Gustavus Adolphus	9	15	8	0	32
Opponents	8	9	14	2	33

Saves by Period	1st	2nd	3rd	OT	Total
Gustavus Adolphus	98	90	77	8	273
Opponents	98	106	95	11	310

The Automated ScoreBook
 Gustavus Adolphus Category Leaders (as of Jan 06, 2016)
 All games

##	Points	GP	G	A	Pts	Sh
8	A. Eder-Zdechlik	12	9	2	11	45
9	Erica Power	12	5	5	10	38
4	Diana Draayer	10	4	3	7	23
14	Katy Fuller	12	4	3	7	31
20	Kaitlyn Klein	8	3	3	6	21
21	Laine Fischer	12	2	2	4	31
15	Erin Moes	10	1	3	4	19
10	Marina Chapman	12	1	2	3	26
2	Courtney Bethune	11	0	3	3	8
12	Georgia Eger	8	2	0	2	12

##	Goals	GP	G	A	Pts	Sh
8	A. Eder-Zdechlik	12	9	2	11	45
9	Erica Power	12	5	5	10	38
4	Diana Draayer	10	4	3	7	23
14	Katy Fuller	12	4	3	7	31
20	Kaitlyn Klein	8	3	3	6	21
21	Laine Fischer	12	2	2	4	31
12	Georgia Eger	8	2	0	2	12
15	Erin Moes	10	1	3	4	19
10	Marina Chapman	12	1	2	3	26
23	Laura Johnson	8	1	1	2	7

##	Power-Play Goals	GP	PPG
8	A. Eder-Zdechlik	12	2
14	Katy Fuller	12	2

##	Short-Handed Goals	GP	SHG
8	A. Eder-Zdechlik	12	3
4	Diana Draayer	10	1
21	Laine Fischer	12	1

##	Game-Winning Goals	GP	GWG
4	Diana Draayer	10	2

##	Plus/Minus	GP	+/-
2	Courtney Bethune	11	+5
4	Diana Draayer	10	+3
20	Kaitlyn Klein	8	+3
9	Erica Power	12	+2
8	A. Eder-Zdechlik	12	+2
24	Courtney Potter	11	+2
16	Madison Bergren	12	+2
7	Kalley Spreiter	10	+1
6	Emily Gustafson	7	+1
12	Georgia Eger	8	+1

##	Assists	GP	G	A	Pts	Sh
9	Erica Power	12	5	5	10	38
4	Diana Draayer	10	4	3	7	23
14	Katy Fuller	12	4	3	7	31
20	Kaitlyn Klein	8	3	3	6	21
15	Erin Moes	10	1	3	4	19
2	Courtney Bethune	11	0	3	3	8
8	A. Eder-Zdechlik	12	9	2	11	45
21	Laine Fischer	12	2	2	4	31
10	Marina Chapman	12	1	2	3	26
16	Madison Bergren	12	0	2	2	9

##	Shots	GP	G	A	Pts	Sh	Sh%
8	A. Eder-Zdechlik	12	9	2	11	45	.200
9	Erica Power	12	5	5	10	38	.132
14	Katy Fuller	12	4	3	7	31	.129
21	Laine Fischer	12	2	2	4	31	.065
10	Marina Chapman	12	1	2	3	26	.038
4	Diana Draayer	10	4	3	7	23	.174
20	Kaitlyn Klein	8	3	3	6	21	.143
15	Erin Moes	10	1	3	4	19	.053
19	Allie Lewis	12	0	1	1	16	.000
12	Georgia Eger	8	2	0	2	12	.167

##	Shot Pct.	GP	G	A	Pts	Sh	Sh%
8	A. Eder-Zdechlik	12	9	2	11	45	.200
4	Diana Draayer	10	4	3	7	23	.174
12	Georgia Eger	8	2	0	2	12	.167
23	Laura Johnson	8	1	1	2	7	.143
20	Kaitlyn Klein	8	3	3	6	21	.143
9	Erica Power	12	5	5	10	38	.132
14	Katy Fuller	12	4	3	7	31	.129
21	Laine Fischer	12	2	2	4	31	.065
15	Erin Moes	10	1	3	4	19	.053
10	Marina Chapman	12	1	2	3	26	.038

##	Penalties	GP	Pen	Min
10	Marina Chapman	12	5	10
14	Katy Fuller	12	5	10
12	Georgia Eger	8	4	8
4	Diana Draayer	10	4	8
24	Courtney Potter	11	4	8
19	Allie Lewis	12	3	6
23	Laura Johnson	8	3	6
21	Laine Fischer	12	3	6
15	Erin Moes	10	3	6
16	Madison Bergren	12	3	6

##	Penalty Minutes	GP	Pen	Min
14	Katy Fuller	12	5	10
10	Marina Chapman	12	5	10
12	Georgia Eger	8	4	8
4	Diana Draayer	10	4	8
24	Courtney Potter	11	4	8
19	Allie Lewis	12	3	6
23	Laura Johnson	8	3	6
21	Laine Fischer	12	3	6
15	Erin Moes	10	3	6
16	Madison Bergren	12	3	6

**The Automated ScoreBook
Gustavus Adolphus Combined Team Statistics (as of Jan 06, 2016)
All games**

Date	Opponent	Score	Att.
Nov 03	at UW-Superior	Tot 2-2	123
Nov 06	ST. OLAF	W 4-1	257
* Nov 13	#4 UST-WOM	W 6-4	247
* Nov 14	at UST-WOM	L 3-5	200
* 11/20/15	at Augsburg College	Tot 2-2	201
* Nov 21	AUGSBURG COLLEGE	W 4-1	378
Nov 28	vs #2 Elmira	L 1-2	212
Nov 29	vs #1 Plattsburgh	L 3-5	219
* Dec 04	at Saint Benedict	Tot 2-2	257
* Dec 05	SAINT BENEDICT	Lot 2-3	165
Dec 09	at #8 UW-River Falls	L 2-4	168
Dec 11	#8 UW-RIVER FALLS	Lot 1-2	228

TEAM STATISTICS	GAC	OPP
SHOT STATISTICS		
Goals-Shot attempts	32-342	33-306
Shot pct.	.094	.108
Goals/Game	2.7	2.8
Shots/Game	28.5	25.5
POWER PLAYS		
Goals-Power Plays	9-47	9-44
Conversion Percent	.191	.205
Shot Attempts	64	74
Shot Percent	.141	.122
GOAL BREAKDOWN		
Power Play	9	9
Short-handed	5	2
Empty net	1	0
Penalty	0	0
Unassisted	8	8
Overtime	0	2
Shootout	0	0
Delayed Penalty	0	0
PENALTIES		
Number	47	50
Minutes	97	100
Penalties/Game	3.9	4.2
Pen minutes/Game	8.1	8.3
SHOOTOUTS (Made-Att)	0-0	0-0

Record:	Overall	Home	Away	Neutral
ALL GAMES	3-6-3	3-2-0	0-2-3	0-2-0
CONFERENCE	2-2-2	2-1-0	0-1-2	0-0-0
NON-CONFERENCE	1-4-1	1-1-0	0-1-1	0-2-0

##	Player	gp	g	a	pts	sh	sh%	pen-min	pp	sh
8	A. Eder-Zdechlik	12	9	2	11	45	.200	2-4	2	3
9	Erica Power	12	5	5	10	38	.132	1-5	1	0
4	Diana Draayer	10	4	3	7	23	.174	4-8	0	1
14	Katy Fuller	12	4	3	7	31	.129	5-10	2	0
20	Kaitlyn Klein	8	3	3	6	21	.143	1-2	1	0
21	Laine Fischer	12	2	2	4	31	.065	3-6	0	1
15	Erin Moes	10	1	3	4	19	.053	3-6	0	0
10	Marina Chapman	12	1	2	3	26	.038	5-10	1	0
2	Courtney Bethune	11	0	3	3	8	.000	0-0	0	0
12	Georgia Eger	8	2	0	2	12	.167	4-8	1	0
23	Laura Johnson	8	1	1	2	7	.143	3-6	1	0
16	Madison Bergren	12	0	2	2	9	.000	3-6	0	0
24	Courtney Potter	11	0	2	2	8	.000	4-8	0	0
6	Emily Gustafson	7	0	1	1	10	.000	0-0	0	0
19	Allie Lewis	12	0	1	1	16	.000	3-6	0	0
3	Emily Reibert	9	0	1	1	9	.000	0-0	0	0
22	Brooke Pahlen	7	0	0	0	1	.000	1-2	0	0
5	Rachel Skoglund	10	0	0	0	12	.000	1-2	0	0
7	Kalley Spreiter	10	0	0	0	9	.000	1-2	0	0
18	Allie Stanger	10	0	0	0	7	.000	1-2	0	0
TM	TEAM	1	0	0	0	0	.000	2-4	0	0
Total		12	32	34	66	342	.094	47-97	9	5
Opponents		12	33	41	74	306	.108	50-100	9	2

##	Goalie	gp	min	ga	gaavg	saves	save%	w-l-t
33	Paige Press	3	26:43	0	0.00	8	1.000	0-0-0
1	Lindsey Hibbard	5	220:21	10	2.72	81	.890	1-1-1
35	Amanda DiNella	9	492:22	23	2.80	184	.889	2-5-2
TM	EMPTY NET	1	1:06	0	-	0	.000	0-0-0
Total		12	740:32	33	2.67	273	.892	3-6-3
Opponents		12	740:32	32	2.59	310	.906	6-3-3

Attendance Summary	GAC	Opponent
Total	1275	949
Dates/Avg Per Date	5/255	5/190
Neutral Site #/Avg	2/216	

Goals by Period	1st	2nd	3rd	OT	Total
Gustavus Adolphus	9	15	8	0	32
Opponents	8	9	14	2	33

Saves by Period	1st	2nd	3rd	OT	Total
Gustavus Adolphus	98	90	77	8	273
Opponents	98	106	95	11	310

**The Automated ScoreBook
Gustavus Adolphus Game Results (as of Jan 06, 2016)
All games**

Date	Opponent		Score	Shots	Overall	Conf	Time	Att.	Goalie of record
Nov 03	at UW-Superior	Tot	2-2	40/29	0-0-1	0-0-0	2:15h	123	Lindsey Hibbard
Nov 06	ST. OLAF	W	4-1	36/25	1-0-1	0-0-0	2:00	257	Amanda DiNella
* Nov 13	#4 UST-WOM	W	6-4	20/26	2-0-1	1-0-0	2:28	247	Lindsey Hibbard
* Nov 14	at UST-WOM	L	3-5	19/34	2-1-1	1-1-0	1:55	200	Amanda DiNella
* 11/20/15	at Augsburg College	Tot	2-2	31/27	2-1-2	1-1-1	2:03	201	Amanda DiNella
* Nov 21	AUGSBURG COLLEGE	W	4-1	31/22	3-1-2	2-1-1	1:51	378	Amanda DiNella
Nov 28	vs #2 Elmira	L	1-2	24/19	3-2-2	2-1-1	1:55	212	Amanda DiNella
Nov 29	vs #1 Plattsburgh	L	3-5	22/39	3-3-2	2-1-1	2:20	219	Amanda DiNella
* Dec 04	at Saint Benedict	Tot	2-2	39/21	3-3-3	2-1-2	2:00	257	Amanda DiNella
* Dec 05	SAINT BENEDICT	Lot	2-3	40/14	3-4-3	2-2-2	2:02	165	Lindsey Hibbard
Dec 09	at #8 UW-River Falls	L	2-4	22/27	3-5-3	2-2-2	1:50	168	Amanda DiNella
Dec 11	#8 UW-RIVER FALLS	Lot	1-2	18/23	3-6-3	2-2-2	2:02	228	Amanda DiNella

Team Record	W-L-T	Attendance	Dates	Total	Avg.
Overall:	3-6-3	Total:	12	2655	221
Conference:	2-2-2	Home:	5	1275	255
Home:	3-2-0	Away:	5	949	190
Away:	0-2-3	Neutral:	2	431	216
Neutral:	0-2-0				
Overtime:	0-2-3				