



2015-16 Gustavus Adolphus College Women's Hockey Game Notes


Gustavus Sports Information

800 W College Ave, St. Peter, MN 56082
gustavus.edu/athletics
(507) 933-7647 • sportsinfo@gustavus.edu

Women's Hockey Media Contact
Nick Hoelmer, Asst. Sports Information Director
(507) 933-8411 • nhoelmer@gustavus.edu


Follow Gustavus Athletics Online

 **Twitter**
@GustieAthletics

 **Facebook**
facebook.com/GustieAthletics

 **Snap Chat**
Username: Gusties

 **Flickr**
flickr.com/photos/gogusties

 **YouTube**
youtube.com/gustavusathletics

 **Instagram**
@gustieathletics

2015-16 SCHEDULE

DATE	OPPONENT	TIME/RESULT
NOVEMBER		
3	UW-Superior	T 2-2
6	ST. OLAF COLLEGE (Non-Conference)	W 4-1
13	NO. 4 UNIVERSITY OF ST. THOMAS	W 6-4
14	No. 4 University of St. Thomas	L 3-5
20	Augsburg College	T 2-2
21	AUGSBURG COLLEGE	W 4-2
28	No. 2 Elmira College (Panther Classic)	L 1-2
29	No. 1 Plattsburgh State (Panther Classic)	L 3-5
DECEMBER		
4	College of Saint Benedict	T 2-2
5	COLLEGE OF SAINT BENEDICT	L 2-3
9	No. 8 UW-River Falls	L 2-4
11	NO. 8 UW-RIVER FALLS	L 1-2
JANUARY		
8	UW-Stevens Point	L 0-4
15	St. Catherine University	T 1-1
16	ST. CATHERINE UNIVERSITY	W 3-0
22	ST. OLAF COLLEGE	W 4-3
23	St. Olaf College	W 5-0
29	Concordia College	7 p.m.
30	Concordia College	2 p.m.
FEBRUARY		
5	Saint Mary's University	7 p.m.
6	SAINT MARY'S UNIVERSITY	2 P.M.
12	Bethel University	7 p.m.
13	BETHEL UNIVERSITY	2 P.M.
19	Hamline University	7 p.m.
20	HAMLIN UNIVERSITY	2 P.M.

HOME GAMES IN BOLD AND CAPS



Gustavus Adolphus College

Golden Gusties
(6-7-4 Overall, 5-2-3 MIAC)

vs.

Concordia College

Cobbers
(9-7-1 Overall, 7-3-0 MIAC)

Game 18

Date: Friday, January 29 • **Time:** 7 p.m. **Location:** Moorhead, Minn.

Arena: Moorhead Sports Center Hockey Arena

Live Video: Not Provided

Live Stats: http://concordiamn.prestosports.com/sports/wice/2015-16/boxscores/20160129_6o7a.xml



Game 19

Date: Saturday, January 30 • **Time:** 2 p.m. **Location:** Moorhead, Minn.

Arena: Moorhead Sports Center Hockey Arena

Live Video: Not Provided

Live Stats: http://concordiamn.prestosports.com/sports/wice/2015-16/boxscores/20160129_6o7a.xml

Setting The Scene: The Gustavus Adolphus College women's hockey team returns to action this weekend with an away series against Concordia College on Friday and Saturday. Due to the distance between the two schools, Concordia hosts both games of the conference series, as Gustavus hosted both in 2014-15. On Friday, the Gusties and Cobbers play at 7 p.m., and play at 2 p.m. Saturday. Both games take place at the Moorhead Sports Center. Gustavus enters the series with a 6-7-4 overall record, and 5-2-3 mark in the MIAC, while Concordia comes in with at 9-7-1 overall and 7-3-0 in the league.

Last Time Out: Gustavus is most recently coming off of a series sweep of St. Olaf College this past weekend. On Friday in St. Peter, the Gusties fell behind 2-0, but used the power play to its advantage to earn an eventual 4-3 comeback victory. The Oles' Jane Vezina notched a hat trick after a period and a half of play, but Gustavus got two goals from senior Emily Reibert and two more from first-years Erin Moes and Georgia Eger to come back from its 3-1 deficit. Senior goalie Lindsey Hibbard also played a key role after relieving Amanda DiNella midway through the second period. Hibbard made 12 total saves (including three in the final two minutes) in 35:06 to bring her record to 2-1-1 on the year.

On Saturday in Northfield, the Gusties didn't need to play catch up, as they got the game-winner from Moes with 4:46 remaining in the first period to put the visitors up 1-0. From there, the Gusties scored four more times, including two goals from Allison Eder-Zdechlik, and Hibbard extended her scoreless streak to 95:06 with a shutout of the Oles, bringing her record to 3-1-1 on the year after making 12 saves.

Concordia is most recently coming off being swept by Augsburg College in two games in Minneapolis this past weekend. The Cobbers weren't able to muster a goal all weekend, and were shutout 3-0 in both games by Auggie goalie Erika Allen. Concordia outshot Augsburg in both games - 27-25 and 21-20 - but couldn't put one home and dropped to 2-5-0 away from Moorhead this season.

13 MIAC Championships • 11 NCAA Tournament Appearances

The Match Up

Statistical Comparison

Gustavus		Concordia
2.65 (2nd)	Goals For	2.53 (4th)
2.35 (8th)	Goals Against	2.10 (5th)
21.4% (1st)	Power Play	10.7% (9th)
84.2% (6th)	Penalty Kill	83.6% (5th)
+7 (1st)	Special Teams Net	-2 (4th)
123 (6th)	Penalty Minutes	147 (2nd)

2015-16 season averages with MIAC ranks (10 teams)

The Series

Gustavus vs. Concordia

All-Time Record	34-1-2
Last Meeting	W 2-0
Current Streak	W8

Gustie Coach Mike Carroll

Overall Record at Gustavus	362-90-31
vs. Concordia	34-1-2

Cobber Coach Jason Gregoire

Overall Record at Concordia	19-20-4
vs. Gustavus	0-2-0

Last 10 Meetings	9-0-1
------------------	-------

Date	Location	Result
Nov. 15, 2014	St. Peter	W 2-0
Nov. 14, 2014	St. Peter	W 3-1
Nov. 16, 2013	Moorhead	W 2-0
Nov. 15, 2013	Moorhead	W 4-1
Mar. 2, 2013	St. Peter	W 4-1**
Jan. 26, 2013	St. Peter	W 4-1
Jan. 25, 2013	St. Peter	W 5-1
Mar. 3, 2012	St. Peter	W 4-2**
Jan. 28, 2012	Moorhead	T 3-3
Jan. 27, 2012	Moorhead	W 4-1

* - Denotes MIAC Playoff Game

** - Denotes MIAC Championship Game

Series Snapshot: This weekend's series with Concordia marks the 38th and 39th meetings between the Gusties and Cobbers in women's hockey. The Gusties hold the advantage in the all-time series with a record of 34-1-2 including last season's 3-1 victory and 2-0 victories on Nov. 14 and 15, 2014 in St. Peter.

About The Cobbers: After going into last weekend's series as the MIAC's top-ranked squad, the Cobbers fell to 7-3-0 in the conference, which now puts them in a tie for third place heading into this weekend's series with the Gusties.

The Cobbers are led by junior forwards Jess Nelson and Jessica Kongelf. The pair have tallied 13 and 12 points this season, respectively. Nelson has five goals and eight assists, while Kongelf has notched six goals and six assists. Sophomore Tori Davis leads the team in goals with eight, while Andrea Klug leads the Cobbers between the pipes. The senior goalie is 9-5-1 on the season with six shutouts after posting a .939 save percentage and 1.61 goals against average.

The Cobbers are near the middle of the conference in every major statistical category, including a fourth place ranking in goals scored at 2.53 per game and a fifth place ranking in goals allowed at 2.10 per contest. Concordia is known for the time it spends in the sin bin, as it averages 8.6 penalty minutes per game.

On A Hot Streak: Gustavus is currently in the midst of its longest win-streak of the season, as it has won its past three contests. If history is any indication, the Gusties have a good chance to extend that streak this weekend, as it has earned wins in its past eight games against Concordia dating back to Jan. 28, 2012 when it tied the Cobbers 3-3 in Moorhead.

Get on the Board!: Gustavus has proven to be a different team when it is the first team to score in games this season. In games in which the Gusties have scored first, the Black and Gold is 5-1-2, compared to 1-6-2 when opponents score first. The only win Gustavus has when allowing its opponent to score first came this past Friday in a 4-3 comeback win over St. Olaf.

Gustavus Embarks On 19th Season Of Women's Hockey: The Gustavus women's hockey team is currently in its 19th season. Founded in 1997, the Gusties have attained an all-time record of 392-109-32, which stands as the second winningest program in all of NCAA Division III women's hockey. The Gustie women have won 13 MIAC titles in the 18 years of women's hockey in the conference. Those 14 titles rank first in front of St. Thomas (3), and Augsburg and Saint Mary's, who each have two. Gustavus has also earned the MIAC Playoff crown a total of 11 times, 10 of which have come in the past 12 years and led to 11 NCAA Tournament appearances.

Wearing The "C": In the 18-year history of the Gustavus women's hockey program, 36 players have earned the honor of being a captain. This year, three new players earn that title in senior Allison Eder-Zdechlik, junior Allie Lewis, and sophomore Diana Draayer.

Home Grown Talent: Of the 23 players on this year's roster, 20 are natives of Minnesota. The only players who reside outside the State of Hockey are Courtney Bethune, who hails from Fort Frances, Ontario, Allie Lewis, who is a native of Kearney, Nebraska, and Amanda DiNella from Oakbrook Terrace, Illinois.

Scorers Return: Despite losing two of its top four scorers from its 2014-15 squad, Gustavus will return 62 percent of its scoring from last season, including sophomore Erica Power who led last year's squad with 27 points (9G, 18A) and Allison Eder-Zdechlik who finished tied for second on the team with 20 points (9G, 11A).

A Balanced Approach: Thirteen of the Gusties' 23 players in 2015-16 are returners, and the Gusties also welcome back three of their five All-MIAC selections. However, the Gusties also welcome in 10 first-years, including five forwards, three defenders, and two goalies.



Gustavus Quick Facts

Location:	St. Peter, Minnesota
Address:	800 West College Ave. St. Peter, MN 56082
Founded:	1862
Enrollment:	2,456
Nickname:	Golden Gusties
School Colors:	Black and Gold
Home Ice:	Don Roberts Ice Rink
NCAA Affiliation:	NCAA Division III
Conference:	Minnesota Intercollegiate Athletic
President:	Rebecca M. Bergman
Athletic Director:	Tom Brown
Assistant Athletic Director:	Jared Phillips
Athletic Trainer:	Troy Banse
Equipment Manager:	Jed Friedrich
Sports Information Director:	CJ Siewert
Asst. Sports Information Director:	Nick Hoelmer

Gustavus Hockey Quick Facts

2014-15 Record:	19-5-2
2014-15 MIAC Record/Finish:	15-2-1 / 1st
All-Time Record:	392-109-32
All-Time MIAC Record:	261-31-15
MIAC Championships:	13
Returners/First-years:	13/10
All-MIAC Honorees Returning/Lost:	3/2

Gustavus Under Head Coach Mike Carroll

Year	Overall	MIAC	Conference Finish
1999-00	18-10-1	12-5-1	3rd
2000-01	23-6-1	16-2-0	1st
2001-02	23-5-2	18-0-1	1st
2002-03	14-9-4	11-4-3	3rd
2003-04	22-6-0	16-2-0	2nd
2004-05	25-4-1	17-1-0	1st
2005-06	22-5-2	17-0-1	1st
2006-07	25-3-0	17-1-0	1st
2007-08	25-3-0	18-0-0	1st
2008-09	22-2-4	16-0-2	1st
2009-10	26-6-2	14-3-1	1st
2010-11	22-5-3	14-2-2	1st
2011-12	24-4-2	16-1-1	1st
2012-13	27-2-1	18-0-0	1st
2013-14	17-8-2	14-4-0	2nd
2014-15	19-5-2	15-2-1	1st
2015-16	6-7-4	5-2-3	--
Totals	356-90-31	254-29-16	12 MIAC Titles

Around The League

MIAC Standings

School	Points	MIAC	Overall
St. Thomas	17	8-1-1	13-2-1
Augsburg	15	7-2-1	10-6-1
Concordia	14	7-3	9-7-1
Bethel	14	6-2-2	8-7-2
Gustavus	13	5-2-3	6-7-4
Hamline	9	4-5-1	7-8-2
Saint Mary's	9	4-5-1	5-10-2
Saint Benedict	7	3-6-1	5-11-1
St. Catherine	1	0-9-1	1-12-4
St. Olaf	1	0-9-1	1-15-1

This Weekend in the MIAC

Friday, January 29

Gustavus at Concordia | 7 p.m.
Hamline at Bethel | 7 p.m.
Saint Mary's at Augsburg | 7 p.m.
St. Olaf at St. Catherine | 7:30 p.m.
Saint Benedict at St. Thomas | 7:30 p.m.

Saturday, January 30

Gustavus at Concordia | 2 p.m.
Augsburg at Saint Mary's | 2 p.m.
St. Thomas at Saint Benedict | 3 p.m.
Bethel at Hamline | 7 p.m.
St. Catherine at St. Olaf | 7:30 p.m.

MIAC Athlete-of-the-Week



Erika Allen
Sr., Goalie
Roseville, Minn. / Roseville

Opponent	GA	SV	W/L
vs. Concordia	0	27	W
at Concordia	0	21	W
Totals	0	48	2-0

USCHO.com Div. III Poll

Rank	School	Overall	Points	Last
1	Plattsburgh (15)	18- 0-0	150	1
2	Elmira	15- 1-1	130	2
3	Adrian	16- 2-0	120	3
4	St. Thomas	13- 1-1	104	4
5	Lake Forest	17- 1-1	89	5
6	Amherst	11- 1-3	74	6
7	Middlebury	9- 3-3	60	7
8	Wisconsin-River Falls	14- 3-1	47	8
9	Castleton	13- 3-2	17	9
10	Norwich	11- 6-0	14	10



Gustavus Record When:

At home	5-2-0
On the road	1-3-4
Neutral Site	0-2-0
vs. MIAC opponents	5-2-3
vs. Non-conference opponents	1-5-1
vs. Top 10 opponents	1-5-0
GAC scores 4 or more goals	5-0-0
GAC scores 3 goals	1-2-0
GAC scores 2 or fewer goals	0-2-5
GAC scores first	5-1-2
Opponent scores first	1-6-2
GAC leads after 1st period	3-0-1
Opponent leads after 1st period	1-2-1
Tied after 1st period	2-4-2
GAC leads after 2nd period	5-2-1
Opponent leads after 2nd period	0-4-0
Tied after 2nd period	1-1-2
In overtime	0-2-3
Games decided by one goal	1-3-0
Games decided by two goals	1-3-0
Games decided by three goals	3-0-0
Games decided by four or more	1-1-0
GAC scores on the power play	6-4-2
GAC scoreless on the power play	0-4-1
GAC scores two or more PP goals	0-0-2
GAC outshoots opponent	5-3-4
GAC outshot by opponent	1-4-0
Shots equal	0-0-0
Tuesday Games	0-0-1
Wednesday Games	0-1-0
Friday Games	3-2-3
Saturday Games	3-3-0
Sunday Games	0-1-0
In November	3-3-2
In December	0-3-1
In January	3-1-1
In February	0-0-0
In March	0-0-0
Following a win	3-2-0
Following a loss	0-4-3
Following a tie	3-1-0
Night games	3-5-4
Day games	3-2-0

Who's Hot

Scoring vs. St. Olaf

Player	Games	Goals	Assists	Points	Point Streak
Allison Eder-Zdechlik	2	2	1	3	4
Erin Moes	2	2	1	3	4
Georgia Eger	2	1	2	3	2
Emily Reibert	2	2	0	2	--

Goaltending vs. St. Olaf

Player	Record	Minutes	GA	Saves	Scoreless Str.
Lindsey Hibbard	2-0-0	95:06	0	24	95:06

2015-16 Season By The Numbers

Largest Victory	5: vs. St. Olaf (1/23/16)
Largest Defeat	4: at UW-Stevens Point (1/8/16)
Largest First Period Lead	2: vs. Augsburg (11/21/15)
Largest First Period Deficit	2 (2x) Last: vs. St. Olaf (1/22/16)
Largest Second Period Lead	4: vs. St. Thomas (11/13/15)
Largest Second Period Deficit	4: at No. 7 UW-River Falls (12/9/15)
Most Goals Scored	6: vs. St. Thomas (11/13/15)
Fewest Goals Scored	0 : at UW- Stevens Point (1/8/16)
Most Goals Allowed	5 (2x) Last: vs. No. 1 Plattsburgh (11/29/15)
Fewest Goals Allowed	0 (2x) Last: vs. St. Olaf (1/23/16)
Largest Lead	5: vs. St. Olaf (1/23/16)
Largest Lead On Road	5: vs. St. Olaf (1/23/16)
Largest Lead At Home	4: vs. St. Thomas (11/13/15)
Largest Blown Lead	2: vs. No. 1 Plattsburgh (11/29/15)
Largest Deficit	4: at UW-Stevens Point (1/8/16)
Largest Deficit On Road	4: at UW-Stevens Point (1/8/16)
Largest Deficit At Home	2 vs. St. Olaf (1/22/16)
Largest Comeback-Win/Tie	2 vs. St. Olaf (W4-3) (1/22/16)



Last Time It Happened

COMEBACKS

GAC won when trailing after two periods

December 13, 2014 vs. UW-Stevens Point. Trailing 1-0 early in the third, Gustavus scored three consecutive goals to capture a 3-1 victory.

Opponent won when trailing after two periods

Dec. 5, 2015 vs. Saint Benedict. Gustavus led CSB 2-1 going into third period, but Blazers scored once in third and once in overtime to earn 3-2 victory

Overcame 1-goal deficit and won

GAC: January 22, 2016 vs. St. Olaf College. Trailing 3-1 after the first, Gustavus won 4-3.
OPP: Dec. 5, 2015 vs. Saint Benedict. Gustavus led 2-1 after second, Saint Ben's won 3-2

Overcame 2-goal deficit and won

GAC: January 22, 2016 vs. St. Olaf College. Trailing 3-1 after the first, Gustavus won 4-3.
OPP: Nov. 29, 2015 vs. No. 1 Plattsburgh State. Gustavus led Plattsburgh 3-1 going into third period, but Cardinals scored four goals in third period to earn 5-3 win.

Overcame a 3-goal deficit and won

GAC: March 1, 1998 vs. University of Minnesota Club. Gusties scored one in the second and three in the third to win 4-3.

OPP: Never

OVERTIME GAMES

Won overtime game

GAC: March 1, 2012 vs. Bethel. Courtney Boucher scored 6:25 in to overtime to win 1-0 and advance to the MIAC Championship.

OPP: Dec. 5, 2015 vs. Saint Benedict

Tied overtime game

Jan 15, 2016 at St. Catherine

SERIES SWEEPS

Swept a 2-game regular season home-home series

GAC: Jan. 22 and 23, 2016 vs. St. Olaf. (4-3 Friday in St. Peter, 5-0 Saturday in Northfield)
OPP: Jan. 31-Feb. 1, 2014 vs. Saint Benedict. (4-2 Friday night in St. Peter, 4-2 again on Saturday in St. Cloud)

Swept a 2-game regular season home series

GAC: Nov. 14-15, 2014 vs. Concordia. (3-1, 2-0)
OPP: Never

Swept a 2-game regular season away series

GAC: Nov. 15-16, 2013 at Concordia. (4-1, 2-0)
OPP: Never. (MIAC Playoffs: March 10-11, 2000 at Augsburg. (4-1, 2-1)

SHUTOUTS

Last Shutout

GAC: Jan. 23, 2016 at St. Olaf, 5-0
OPP: Jan. 8, 2016 at UW-Stevens Point, 4-0

Last Home Shutout

GAC: Jan 16, 2016 vs. St. Catherine, 3-0
OPP: Jan. 9, 2015 vs. Adrian 1-0

Last Road Shutout

GAC: Jan. 23, 2016 at St. Olaf, 5-0
OPP: Jan. 8, 2016 at UW-Stevens Point, 4-0

Scoreless Ties (2 in program history)

Jan. 14, 2010 vs. Trinity (Conn.)
Feb. 17, 2009 at UW-Stevens Point

EXTRA ATTACKER GOALS

Scored an extra attacker goal

GAC: Nov. 30, 2014 vs. Middlebury. Lydia Wagner scored w/ 39 sec. left
OPP: Dec. 5, 2015 vs. Saint Benedict. CSB won 3-2

SHORTHANDED GOALS

Scored a shorthanded goal

GAC: Jan 23, 2016 at St. Olaf. Allison Eder-Zdechlik scored shorthanded goal in third period to put Gustavus up 5-0.
OPP: Jan. 22, 2016 at Gustavus. Jane Vezina scored shorthanded in the first period of a 4-3 win for the Gusties.

Scored two shorthanded goals

GAC: Nov. 22, 2008 at St. Olaf. Melissa Mackley scored two short-handed goals in the third period. Gusties won 4-2.
OPP: Never

EMPTY NET GOALS

Scored an empty net goal

GAC: Nov. 21, 2015 vs. Augsburg. Allison Eder-Zdechlik scored EN at 18:58 in 4-1 win for the Gusties in St. Peter.
OPP: Feb. 20, 2015 vs. Bethel. Kathryn Larson scored EN at 18:40 of a 4-2 Royal win in Saint Peter.

TEAM GOALS IN A PERIOD

Team scored 5 or more goals in a period

GAC: Feb. 23, 2013 vs. Saint Benedict. The Gusties scored six goals in the second period on their way to an 8-2 victory in St. Peter.
OPP: Dec. 3, 1998 at the University of Minnesota (Mariucci Arena. Gophers scored five goals in the first period and won 8-1.

PENALTY SHOTS

Scored on a penalty shot

GAC: Never.
OPP: March 19, 2011 vs. Middlebury (NCAA 3rd Place Game, Rochester, N.Y.). Penalty shot goal scored after Lindsey Hjelm checking penalty in the second period. Middlebury won 5-0.

PENALTIES

Not penalized

GAC: Jan. 8, 2016 at UW-Stevens Point. Gustavus lost 4-0.
OPP: Dec. 2, 2000 at St. Catherine. St. Kate's won 4-3.

Neither team was penalized

Jan. 30, 1998 at Saint Mary's. Gusties won 6-2.

HAT TRICKS

Last individual 3-goal game

GAC: Nov. 21, 2015 vs. Augsburg. Allison Eder-Zdechlik scored three goals (one even, one shorthanded, one empty net) in a 4-1 Gustavus win in St. Peter.
OPP: Jan. 22, 2016 vs. St. Olaf. Jane Vezina scored three times in 4-3 Gustie win.

Last individual 4-goal game

GAC: Dec. 2, 2011 at Augsburg. Allie Schwab scored three PP goals and an even goal in a 9-0 shutout.
OPP: Never.

All goals scored by one player (3+ Goals)

GAC: Never.
OPP: Dec. 2, 2006 at Hamline. Melanie Levielle scored all three goals in a 4-3 loss.

SHOTS ON GOAL

Fewer than 15 shots in a game

GAC: Dec. 3, 1998 at the University of Minnesota, 11 shots. Minnesota won 8-1.
OPP: Jan. 23, 2016 vs. St. Olaf, 12 shots. GAC won 5-0

Fewer than 20 shots in a game

GAC: DEC. 11, 2015 VS. UW-RIVER FALLS, 18 shots. Gustavus lost 2-1.
OPP: Jan. 23, 2016 vs. St. Olaf, 12 shots. GAC won 5-0

40 or more shots in a game

GAC: Jan. 15, 2016 vs. St. Catherine, 42 shots. Tied 1-1.
OPP: Nov. 29, 2014 at Plattsburgh, 42 shots. Tied 4-4.

50 or more shots in a game

GAC: Feb. 16, 2013 vs. St. Olaf, 51 shots. Gustavus won 6-2.
OPP: Nov. 23, 1998 vs. the University of Minnesota: 51 shots. Minnesota won 6-0.

60 or more shots in a game

GAC: Feb. 15, 2013 at St. Olaf, 61 shots. Gustavus won 7-4.
OPP: Feb. 5, 1998 at Boston College, 65 shots. BC won 10-1.

SINGLE GAME POINTS

Player had four points in a game

GAC: Nov. 13, 2014 vs. St. Thomas. Diana Draayer scored three goals, one assist in 6-4 win over St. Thomas.
OPP: Mar. 18, 2011 vs. Norwich (NCAA Semifinals). Julie Fortier scored three goals with an assist in a 5-4 Norwich victory.

Player had five points in a game

GAC: Dec. 2, 2011 at Augsburg. Allie Schwab scored three PP goals and an even goal with an assist in a 9-0 shutout.
OPP: Mar. 18, 2005 vs. Middlebury. (NCAA Semifinals) Lorna Griffis scored two goals with three assists in a 7-3 Middlebury win.

Player had six or more points in a game

GAC: Feb. 11, 2005 at St. Catherine. Andrea Peterson scored two goals with six assists in a 13-0 win. (Most individual points in a game in program history)
OPP: Jan. 30, 1999 at Middlebury. Michelle Labbe scored three goals with three assists in a 8-0 Middlebury win.





Carroll At A Glance

Hometown

- Edina, Minnesota

Education

- Bachelor's Degree: Recreation, Parks, and Leisure Services (Minnesota State, Mankato '82)

Family

- Wife: Terri
- Children: Matt and Mike

Coaching

- 1983-84 – Assistant Coach, University of St. Thomas
- 1984-85 – Assistant Coach, Fergus Falls High School
- 1986-87 – Head Coach, Fergus Falls Community College
- 1990-99 – Head Coach, Mankato West High School
- 1999-Present – Head Coach, Gustavus Adolphus College

Years At Gustavus: 16

All-time Record: 356-90-31

All-time MIAC Record: 254-31-16

MIAC Titles: 12

MIAC Playoff Titles: 11

NCAA Tournaments: 11

NCAA Tournament Record: 8-16-0

Final Fours: 7

Most Wins In A Season: 27 (2012-13)

Fewest Wins In A Season: 14 (2002-03)

*** All-time winningest coach in Gustavus women's hockey history.

Head Coach Mike Carroll

Mike Carroll is in his 17th season as the women's head hockey coach at Gustavus. Within his tenure behind the Gustie bench, Carroll has turned Gustavus women's hockey into one of the most successful programs in NCAA Division III. He has compiled an overall record of 356-90-31 in 16 seasons and has the most coaching victories in the history of the program.

Last season, the Gustavus women's hockey team regained its spot atop of the MIAC standings, finishing first in the final conference standings with 32 points at 15-2-1. However, the Gusties suffered a 6-3 loss to Bethel University in the MIAC Playoff Semifinals, which brought their season to an end and the team finished with an overall record of 19-5-2.

Carroll has directed the Gusties to 12 MIAC regular season titles (2000-01, 2001-02, 2004-05, 2005-06, 2006-07, 2007-08, 2008-09, 2009-10, 2010-11, 2011-12, 2012-13) and has been named the MIAC Coach-of-the-Year six times (2001-02, 2003-04, 2004-05, 2005-06, 2010-11, 2012-13, 2014-15). In addition to coaching 37 players who have earned All-Conference honors 64 times, he has coached five MIAC Players-of-the-Year in Sarah Garrison, Andrea Peterson, Stefanie Ubl, Allie Schwab, Lindsey Hjelm. Carroll has also worked with 14 players who have earned All-America distinction 22 times and two American Hockey Coaches Association Players-of-the-Year, including four-time MIAC Player-of-the-Year and four-time All-American Andrea Peterson.

Prior to coming to Gustavus, Carroll served as the head boys' hockey coach at Mankato West High School from 1991 to 1999. Carroll's college coaching resume included a stint as head men's hockey coach at Fergus Falls Community College from 1986 to 1987 as well as a season as the assistant men's coach at the University of St. Thomas in 1983.

Carroll, an Edina, Minnesota native, competed in hockey and baseball at Mankato State. After graduating with a degree in municipal recreation in 1982, Carroll played professional baseball in the Montreal Expos organization for two years.

Mike and his wife, Terri, live in Mankato and have two sons, Matt and Mike.

2015-16 Roster Breakdown

Returners (13)

Courtney Bethune
Diana Draayer
Allison Eder-Zdechlik
Katy Fuller
Emily Gustafson
Lindsey Hibbard
Laura Johnson
Kaitlyn Klein
Allie Lewis
Courtney Potter
Erica Power
Emily Reibert
Rachel Skoglund

Newcomers (10)

Kalley Spreiter
Marina Chapman
Georgia Eger
Erin Moes
Madison Bergren
Allie Stanger
Laine Fischer
Brooke Pahlen
Paige Press
Amanda DiNella

By Class

Seniors (3)

Allison Eder-Zdechlik
Lindsey Hibbard
Emily Reibert

Juniors (4)

Courtney Bethune
Emily Gustafson
Allie Lewis
Courtney Potter

Sophomores (6)

Diana Draayer
Katy Fuller
Laura Johnson
Kaitlyn Klein
Erica Power
Rachel Skoglund

First-Years (10)

Madison Bergren
Marina Chapman
Amanda DiNella
Georgia Eger
Laine Fischer
Erin Moes
Brooke Pahlen
Paige Press
Kalley Spreiter

2015-16 Numerical Roster

No.	Name	Yr.	Pos.	Hgt.	Hometown/High School
1	Lindsey Hibbard	Sr.	G	5-6	Princeton, Minn./Princeton
2	Courtney Bethune	Jr.	D	5-8	Fort Frances, Ont./Warroad
3	Emily Reibert	Sr.	F	5-5	Inver Grove Heights, Minn./South St. Paul
4	Diana Draayer	So.	F	5-5	Deephaven, Minn./Minnetonka
5	Rachel Skoglund	So.	D	5-2	Forest Lake, Minn./Forest Lake
6	Emily Gustafson	Jr.	F	5-1	Esko, Minn./Esko
7	Kalley Spreiter	Fy.	F	5-5	Litchfield, Minn./Litchfield
8	Allison Eder-Zdechlik	Sr.	F	5-4	Stillwater, Minn./Stillwater
9	Erica Power	So.	F	5-6	Lakeville, Minn./Apple Valley
10	Marina Chapman	Fy.	D	5-9	South Haven, Minn./Annandale
12	Georgia Eger	Fy.	F	5-3	Stillwater, Minn./Stillwater
14	Katy Fuller	So.	F	5-5	Minneapolis, Minn./Southwest
15	Erin Moes	Fy.	D	5-5	Hastings, Minn./Hastings
16	Madison Bergren	Fy.	F	5-6	Mahtomedi, Minn./Mahtomedi
18	Allie Stanger	Fy.	F	5-11	Paynesville, Minn./Paynesville
19	Allie Lewis	Jr.	F	5-3	Kearney, Neb./Shattuck-Saint Mary's
20	Kaitlyn Klein	So.	F	5-6	Plymouth, Minn./Wayzata
21	Laine Fischer	Fy.	D	5-8	Northfield, Minn./Northfield
22	Brooke Pahlen	Fy.	F	5-6	Lakeville, Minn./Eastview
23	Laura Johnson	So.	D	5-2	Chanhassen, Minn./Chanhassen
24	Courtney Potter	Jr.	D	5-2	Dayton, Minn./Champlin Park
33	Paige Press	Fy.	G	5-3	Cottage Grove, Minn./Park
35	Amanda DiNella	Fy.	G	5-4	Oakbrook Terrace, Ill./Willowbrook

Head Coach: Mike Carroll (17th season)

Assistant Coaches: Courtney Boucher, Steve Carroll, Pat Carroll

Alphabetical Roster/Pronunciation Guide

NO.	NAME	Pronunciation
16	Bergren, Madison	
2	Bethune, Courtney	beth-0ON
10	Chapman, Marina	
35	DiNella, Amanda	
4	Draayer, Diana	DRAY-er
8	Eder-Zdechlik, Allison	ee-der-ZED-lick
12	Eger, Georgia	EGG-er
21	Fischer, Laine	
14	Fuller, Katy	
6	Gustafson, Emily	GUST-uhf-son
1	Hibbard, Lindsey	
23	Johnson, Laura	
20	Klein, Kaitlyn	Kline
19	Lewis, Allie	
15	Moes, Erin	
22	Pahlen, Brooke	PAY-len
9	Power, Erica	
24	Potter, Courtney	
35	Press, Paige	
3	Reibert, Emily	RYE-bert
5	Skoglund, Rachel	SKOHG-lund
7	Spreiter, Kalley	SPRITE-er
18	Stanger, Allie	

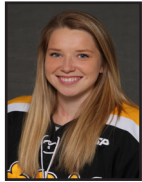
Player Profiles



#1 Lindsey Hibbard
Sr., Goaltender
Princeton, Minn./Princeton

Season Numbers

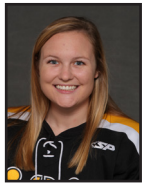
GP	GAA	Save Pct.	Record
7	1.90	.913	3-1-1



#2 Courtney Bethune
Jr., Defender
Fort Frances, Ont./Warroad

Season Numbers

GP	Goals	Assists	Points
16	0	3	3



#3 Emily Reibert
Sr., Forward
Inver Grove Heights, Minn./South St. Paul

Season Numbers

GP	Goals	Assists	Points
14	2	1	3



#4 Diana Draayer
So., Forward
Deephaven, Minn./Minnetonka

Season Numbers

GP	Goals	Assists	Points
15	4	4	8



#5 Rachel Skoglund
So., Defender
Forest Lake, Minn./Forest Lake

Season Numbers

GP	Goals	Assists	Points
15	0	0	0



#6 Emily Gustafson
Jr., Forward
Esko, Minn./Esko

Season Numbers

GP	Goals	Assists	Points
7	0	1	1



#7 Kalley Spreiter
Fy., Forward
Litchfield, Minn./Litchfield

Season Numbers

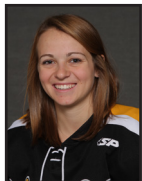
GP	Goals	Assists	Points
15	0	0	0



#8 Allison Eder-Zdechlik
Sr., Forward
Stillwater, Minn./Stillwater

Season Numbers

GP	Goals	Assists	Points
17	13	5	18

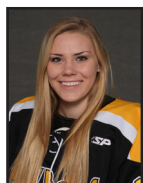


#9 Erica Power
So., Forward
Lakeville, Minn./Apple Valley

Season Numbers

GP	Goals	Assists	Points
17	6	6	12

Player Profiles



#10 Marina Chapman

Fy., Defender
South Haven, Minn./Annandale

Season Numbers

GP	Goals	Assists	Points
17	2	2	4



#12 Georgia Eger

Fy., Forward
Stillwater, Minn./Stillwater

Season Numbers

GP	Goals	Assists	Points
13	3	2	5



#14 Katy Fuller

So., Forward
Minneapolis, Minn./Southwest

Season Numbers

GP	Goals	Assists	Points
17	4	4	8



#15 Erin Moes

Fy., Defender
Hastings, Minn./Hastings

Season Numbers

GP	Goals	Assists	Points
15	4	5	9



#16 Madison Bergren

Fy., Forward
Mahtomedi, Minn./Mahtomedi

Season Numbers

GP	Goals	Assists	Points
17	0	2	2

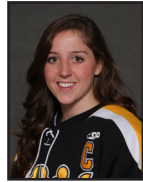


#18 Allie Stanger

Fy., Forward
Paynesville, Minn./Paynesville

Season Numbers

GP	Goals	Assists	Points
15	0	0	0

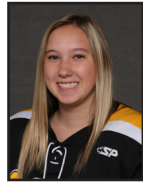


#19 Allie Lewis

Jr., Forward
Kearney, Neb./Shattuck-St. Mary's

Season Numbers

GP	Goals	Assists	Points
17	0	2	2



#20 Kaitlyn Klein

So., Forward
Plymouth, Minn./Wayzata

Season Numbers

GP	Goals	Assists	Points
8	3	3	6



#21 Laine Fischer

Fy., Defender
Northfield, Minn./Northfield

Season Numbers

GP	Goals	Assists	Points
17	3	3	6



Player Profiles



#22 Brooke Pahlen
Fr., Forward
Lakeville, Minn./Eastview

Season Numbers

GP	Goals	Assists	Points
9	0	0	0



#23 Laura Johnson
So., Defender
Chanhausen, Minn./Chanhausen

Season Numbers

GP	Goals	Assists	Points
13	1	3	4



#24 Courtney Potter
Jr., Defender
Dayton, Minn./Champlin Park

Season Numbers

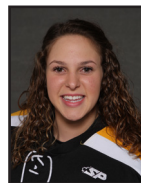
GP	Goals	Assists	Points
16	0	2	2



#33 Paige Press
Fr., Goaltender
Cottage Grove, Minn./Park

Season Numbers

GP	GAA	Save Pct.	Record
4	3.85	.800	0-0-0



#35 Amanda DiNella
Fr., Goaltender
Oakbrook Terrace, Ill./Willowbrook

Season Numbers

GP	GAA	Save Pct.	Record
13	2.46	.894	3-6-3

**The Automated ScoreBook
Gustavus Adolphus Overall Team Statistics (as of Jan 28, 2016)
All games**

Overall: 6-7-4 Conf: 5-2-3 Home: 5-2-0 Away: 1-3-4 Neut: 0-2-0

TEAM STATISTICS	GAC	OPP
SHOT STATISTICS		
Goals-Shot attempts	45-512	41-393
Shot pct.	.088	.104
Goals/Game	2.6	2.4
Shots/Game	30.1	23.1
Assists	48	49
POWER PLAYS		
Goals-Power Plays	12-57	9-57
Conversion Percent	.211	.158
Shot Attempts	83	89
Shot Percent	.145	.101
GOAL BREAKDOWN		
Total Goals	45	41
Power Play	12	9
Short-handed	7	3
Empty net	1	0
Penalty	0	0
Unassisted	10	9
Overtime	0	2
Shootout	0	0
Delayed Penalty	0	0
PENALTIES		
Number	60	64
Minutes	123	128
Penalties/Game	3.5	3.8
Pen minutes/Game	7.2	7.5
Minor	59	64
Major	1	0
10-minute Misconduct	0	0
Game Misconduct	0	0
Gross Misconduct	0	0
Match	0	0
SHOOTOUTS (Made-Att)	0-0	0-0
ATTENDANCE		
Total	1538	1368
Dates/Avg Per Date	7/220	8/171
Neutral Site #/Avg	2/216	

Goals by Period	1st	2nd	3rd	OT	Total
Gustavus Adolphus	11	23	11	0	45
Opponents	11	10	18	2	41

Saves by Period	1st	2nd	3rd	OT	Total
Gustavus Adolphus	121	120	102	9	352
Opponents	152	159	143	13	467



**The Automated ScoreBook
Gustavus Adolphus Category Leaders (as of Jan 28, 2016)
All games**

## Points	GP	G	A	Pts	Sh
8 A. Eder-Zdechlik	17	13	5	18	65
9 Erica Power	17	6	6	12	57
15 Erin Moes	15	4	5	9	37
4 Diana Draayer	15	4	4	8	35
14 Katy Fuller	17	4	4	8	43
21 Laine Fischer	17	3	3	6	43
20 Kaitlyn Klein	8	3	3	6	21
12 Georgia Eger	13	3	2	5	21
10 Marina Chapman	17	2	2	4	40
23 Laura Johnson	13	1	3	4	14

## Goals	GP	G	A	Pts	Sh
8 A. Eder-Zdechlik	17	13	5	18	65
9 Erica Power	17	6	6	12	57
15 Erin Moes	15	4	5	9	37
4 Diana Draayer	15	4	4	8	35
14 Katy Fuller	17	4	4	8	43
21 Laine Fischer	17	3	3	6	43
20 Kaitlyn Klein	8	3	3	6	21
12 Georgia Eger	13	3	2	5	21
10 Marina Chapman	17	2	2	4	40
3 Emily Reibert	14	2	1	3	17

## Power-Play Goals	GP	PPG
8 A. Eder-Zdechlik	17	3
14 Katy Fuller	17	2

## Short-Handed Goals	GP	SHG
8 A. Eder-Zdechlik	17	4
4 Diana Draayer	15	1
21 Laine Fischer	17	1
10 Marina Chapman	17	1

## Game-Winning Goals	GP	GWG
4 Diana Draayer	15	2
8 A. Eder-Zdechlik	17	2

## Plus/Minus	GP	+/-
2 Courtney Bethune	16	+6
8 A. Eder-Zdechlik	17	+5
4 Diana Draayer	15	+3
20 Kaitlyn Klein	8	+3
7 Kalley Spreiter	15	+3
12 Georgia Eger	13	+3
9 Erica Power	17	+2
16 Madison Bergren	17	+2
15 Erin Moes	15	+1
24 Courtney Potter	16	+1

## Assists	GP	G	A	Pts	Sh
9 Erica Power	17	6	6	12	57
8 A. Eder-Zdechlik	17	13	5	18	65
15 Erin Moes	15	4	5	9	37
4 Diana Draayer	15	4	4	8	35
14 Katy Fuller	17	4	4	8	43
21 Laine Fischer	17	3	3	6	43
20 Kaitlyn Klein	8	3	3	6	21
23 Laura Johnson	13	1	3	4	14
2 Courtney Bethune	16	0	3	3	15
12 Georgia Eger	13	3	2	5	21

## Shots	GP	G	A	Pts	Sh	Sh%
8 A. Eder-Zdechlik	17	13	5	18	65	.200
9 Erica Power	17	6	6	12	57	.105
14 Katy Fuller	17	4	4	8	43	.093
21 Laine Fischer	17	3	3	6	43	.070
10 Marina Chapman	17	2	2	4	40	.050
15 Erin Moes	15	4	5	9	37	.108
4 Diana Draayer	15	4	4	8	35	.114
19 Allie Lewis	17	0	2	2	23	.000
20 Kaitlyn Klein	8	3	3	6	21	.143
12 Georgia Eger	13	3	2	5	21	.143

## Shot Pct.	GP	G	A	Pts	Sh	Sh%
8 A. Eder-Zdechlik	17	13	5	18	65	.200
20 Kaitlyn Klein	8	3	3	6	21	.143
12 Georgia Eger	13	3	2	5	21	.143
3 Emily Reibert	14	2	1	3	17	.118
4 Diana Draayer	15	4	4	8	35	.114
15 Erin Moes	15	4	5	9	37	.108
9 Erica Power	17	6	6	12	57	.105
14 Katy Fuller	17	4	4	8	43	.093
23 Laura Johnson	13	1	3	4	14	.071
21 Laine Fischer	17	3	3	6	43	.070

## Penalties	GP	Pen	Min
14 Katy Fuller	17	7	14
10 Marina Chapman	17	7	14
7 Kalley Spreiter	15	5	10
23 Laura Johnson	13	5	10
4 Diana Draayer	15	4	8
16 Madison Bergren	17	4	8
12 Georgia Eger	13	4	8
19 Allie Lewis	17	4	8
24 Courtney Potter	16	4	8
15 Erin Moes	15	3	6

## Penalty Minutes	GP	Pen	Min
10 Marina Chapman	17	7	14
14 Katy Fuller	17	7	14
23 Laura Johnson	13	5	10
7 Kalley Spreiter	15	5	10
24 Courtney Potter	16	4	8
19 Allie Lewis	17	4	8
16 Madison Bergren	17	4	8
4 Diana Draayer	15	4	8
12 Georgia Eger	13	4	8
15 Erin Moes	15	3	6

**The Automated ScoreBook
Gustavus Adolphus Combined Team Statistics (as of Jan 28, 2016)
All games**

Date	Opponent		Score	Att.
Nov 03	at UW-Superior	Tot	2-2	123
Nov 06	ST. OLAF	W	4-1	257
* Nov 13	#4 UST-WOM	W	6-4	247
* Nov 14	at UST-WOM	L	3-5	200
* 11/20/15	at Augsburg College	Tot	2-2	201
* Nov 21	AUGSBURG COLLEGE	W	4-1	378
Nov 28	vs #2 Elmira	L	1-2	212
Nov 29	vs #1 Plattsburgh	L	3-5	219
* Dec 04	at Saint Benedict	Tot	2-2	257
* Dec 05	SAINT BENEDICT	Lot	2-3	165
Dec 09	at #8 UW-River Falls	L	2-4	168
Dec 11	#8 UW-RIVER FALLS	Lot	1-2	228
Jan 08	at UW-Stevens Point	L	0-4	118
* Jan 16	ST. CATHERINE UNIV.	W	3-0	111
* Jan 15	at St. Catherine Univ.	Tot	1-1	145
* Jan 22	ST. OLAF	W	4-3	152
* Jan 23	at St. Olaf	W	5-0	156

TEAM STATISTICS

	GAC	OPP
SHOT STATISTICS		
Goals-Shot attempts	45-512	41-393
Shot pct.	.088	.104
Goals/Game	2.6	2.4
Shots/Game	30.1	23.1
POWER PLAYS		
Goals-Power Plays	12-57	9-57
Conversion Percent	.211	.158
Shot Attempts	83	89
Shot Percent	.145	.101
GOAL BREAKDOWN		
Power Play	12	9
Short-handed	7	3
Empty net	1	0
Penalty	0	0
Unassisted	10	9
Overtime	0	2
Shootout	0	0
Delayed Penalty	0	0
PENALTIES		
Number	60	64
Minutes	123	128
Penalties/Game	3.5	3.8
Pen minutes/Game	7.2	7.5
SHOOTOUTS (Made-Att)	0-0	0-0

Record:	Overall	Home	Away	Neutral
ALL GAMES	6-7-4	5-2-0	1-3-4	0-2-0
CONFERENCE	5-2-3	4-1-0	1-1-3	0-0-0
NON-CONFERENCE	1-5-1	1-1-0	0-2-1	0-2-0

##	Player	gp	g	a	pts	sh	sh%	pen-min	pp	sh
8	A. Eder-Zdechlik	17	13	5	18	65	.200	2-4	3	4
9	Erica Power	17	6	6	12	57	.105	1-5	1	0
15	Erin Moes	15	4	5	9	37	.108	3-6	1	0
4	Diana Draayer	15	4	4	8	35	.114	4-8	0	1
14	Katy Fuller	17	4	4	8	43	.093	7-14	2	0
21	Laine Fischer	17	3	3	6	43	.070	3-6	0	1
20	Kaitlyn Klein	8	3	3	6	21	.143	1-2	1	0
12	Georgia Eger	13	3	2	5	21	.143	4-8	1	0
10	Marina Chapman	17	2	2	4	40	.050	7-14	1	1
23	Laura Johnson	13	1	3	4	14	.071	5-10	1	0
3	Emily Reibert	14	2	1	3	17	.118	0-0	1	0
2	Courtney Bethune	16	0	3	3	15	.000	0-0	0	0
16	Madison Bergren	17	0	2	2	17	.000	4-8	0	0
19	Allie Lewis	17	0	2	2	23	.000	4-8	0	0
24	Courtney Potter	16	0	2	2	16	.000	4-8	0	0
6	Emily Gustafson	7	0	1	1	10	.000	0-0	0	0
22	Brooke Pahlen	9	0	0	0	2	.000	1-2	0	0
5	Rachel Skoglund	15	0	0	0	17	.000	1-2	0	0
7	Kalley Spreiter	15	0	0	0	11	.000	5-10	0	0
18	Allie Stanger	15	0	0	0	8	.000	1-2	0	0
TM	TEAM	1	0	0	0	0	.000	3-6	0	0
Total		17	45	48	93	512	.088	60-123	12	7
Opponents		17	41	49	90	393	.104	64-128	9	3

##	Goalie	gp	min	ga	gaavg	saves	save%	w-l-t
1	Lindsey Hibbard	7	315:27	10	1.90	105	.913	2-1-1
35	Amanda DiNella	13	682:16	28	2.46	235	.894	3-6-3
33	Paige Press	4	46:43	3	3.85	12	.800	0-0-0
TM	EMPTY NET	1	1:06	0	-	0	.000	0-0-0
Total		17	1045:32	41	2.35	352	.896	5-7-4
Opponents		17	1045:32	45	2.58	467	.912	7-5-4

Attendance Summary	GAC	Opponent
Total	1538	1368
Dates/Avg Per Date	7/220	8/171
Neutral Site #/Avg	2/216	

Goals by Period	1st	2nd	3rd	OT	Total
Gustavus Adolphus	11	23	11	0	45
Opponents	11	10	18	2	41

Saves by Period	1st	2nd	3rd	OT	Total
Gustavus Adolphus	121	120	102	9	352
Opponents	152	159	143	13	467

**The Automated ScoreBook
Gustavus Adolphus Game Results (as of Jan 28, 2016)
All games**

Date	Opponent		Score	Shots	Overall	Conf	Time	Att.	Goalie of record
Nov 03	at UW-Superior	Tot	2-2	40/29	0-0-1	0-0-0	2:15h	123	Lindsey Hibbard
Nov 06	ST. OLAF	W	4-1	36/25	1-0-1	0-0-0	2:00	257	Amanda DiNella
* Nov 13	#4 UST-WOM	W	6-4	20/26	2-0-1	1-0-0	2:28	247	Lindsey Hibbard
* Nov 14	at UST-WOM	L	3-5	19/34	2-1-1	1-1-0	1:55	200	Amanda DiNella
* 11/20/15	at Augsburg College	Tot	2-2	31/27	2-1-2	1-1-1	2:03	201	Amanda DiNella
* Nov 21	AUGSBURG COLLEGE	W	4-1	31/22	3-1-2	2-1-1	1:51	378	Amanda DiNella
Nov 28	vs #2 Elmira	L	1-2	24/19	3-2-2	2-1-1	1:55	212	Amanda DiNella
Nov 29	vs #1 Plattsburgh	L	3-5	22/39	3-3-2	2-1-1	2:20	219	Amanda DiNella
* Dec 04	at Saint Benedict	Tot	2-2	39/21	3-3-3	2-1-2	2:00	257	Amanda DiNella
* Dec 05	SAINT BENEDICT	Lot	2-3	40/14	3-4-3	2-2-2	2:02	165	Lindsey Hibbard
Dec 09	at #8 UW-River Falls	L	2-4	22/27	3-5-3	2-2-2	1:50	168	Amanda DiNella
Dec 11	#8 UW-RIVER FALLS	Lot	1-2	18/23	3-6-3	2-2-2	2:02	228	Amanda DiNella
Jan 08	at UW-Stevens Point	L	0-4	26/21	3-7-3	2-2-2	1:48	118	Amanda DiNella
* Jan 16	ST. CATHERINE UNIV.	W	3-0	33/15	4-7-3	3-2-2	2:00	111	Amanda DiNella
* Jan 15	at St. Catherine Univ.	Tot	1-1	42/21	4-7-4	3-2-3	1:58	145	Amanda DiNella
* Jan 22	ST. OLAF	W	4-3	36/18	5-7-4	4-2-3	2:05	152	Lindsey Hibbard
* Jan 23	at St. Olaf	W	5-0	33/12	6-7-4	5-2-3	2:09	156	None

Team Record	W-L-T	Attendance	Dates	Total	Avg.
Overall:	6-7-4	Total:	17	3337	196
Conference:	5-2-3	Home:	7	1538	220
Home:	5-2-0	Away:	8	1368	171
Away:	1-3-4	Neutral:	2	431	216
Neutral:	0-2-0				
Overtime:	0-2-4				