



2015-16 Gustavus Adolphus College Women's Hockey Media Guide


Gustavus Sports Information

800 W College Ave, St. Peter, MN 56082
gustavus.edu/athletics
(507) 933-7647 • sportsinfo@gustavus.edu

Women's Hockey Media Contact
Nick Hoelmer, Asst. Sports Information Director
(507) 933-8411 • nhoelmer@gustavus.edu


Follow Gustavus Athletics Online

 Twitter
@GustieAthletics

 Facebook
facebook.com/GustieAthletics

 Snap Chat
Username: Gusties

 Flickr
flickr.com/photos/gogusties

 YouTube
youtube.com/gustavusathletics

 Instagram
@gustieathletics

2015-16 SCHEDULE

DATE	OPPONENT	TIME/RESULT
NOVEMBER		
3	UW-Superior	T 2-2
6	ST. OLAF COLLEGE (Non-Conference)	W 4-1
13	NO. 4 UNIVERSITY OF ST. THOMAS	W 6-4
14	No. 4 University of St. Thomas	L 3-5
20	Augsburg College	T 2-2
21	AUGSBURG COLLEGE	W 4-2
28	No. 2 Elmira College (Panther Classic)	L 1-2
29	No. 1 Plattsburgh State (Panther Classic)	L 3-5
DECEMBER		
4	College of Saint Benedict	T 2-2
5	COLLEGE OF SAINT BENEDICT	L 2-3
9	No. 8 UW-River Falls	L 2-4
11	NO. 8 UW-RIVER FALLS	L 1-2
JANUARY		
8	UW-Stevens Point	L 0-4
15	St. Catherine University	T 1-1
16	ST. CATHERINE UNIVERSITY	W 3-0
22	ST. OLAF COLLEGE	7 P.M.
23	St. Olaf College	7:30 p.m.
29	Concordia College	7 p.m.
30	Concordia College	2 p.m.
FEBRUARY		
5	Saint Mary's University	7 p.m.
6	SAINT MARY'S UNIVERSITY	2 P.M.
12	Bethel University	7 p.m.
13	BETHEL UNIVERSITY	2 P.M.
19	Hamline University	7 p.m.
20	HAMLIN UNIVERSITY	2 P.M.

HOME GAMES IN BOLD AND CAPS



Gustavus Adolphus College

Golden Gusties
(4-7-4 Overall, 3-2-3 MIAC)

vs.

St. Olaf College

Oles
(1-13-1 Overall, 0-7-1 MIAC)
Game 16

Date: Friday, January 22nd • **Time:** 7:00 p.m. **Location:** St. Peter, Minn.

Arena: Don Roberts Ice Rink

Live Video: <http://portal.stretchinternet.com/stolaf/>

Live Stats: <http://portal.stretchinternet.com/stolaf/>



Game 17

Date: Saturday, January 23rd • **Time:** 7:30 p.m. **Location:** Northfield, Minn.

Arena: Northfield Ice Arena

Live Video: <http://portal.stretchinternet.com/gac/>

Live Stats: <https://gustavus.edu/athletics/whky/LIVE/xlive.htm>

Setting The Scene: The Gustavus Adolphus College women's hockey team is back in action this weekend with a home-away series against St. Olaf College on Friday and Saturday. On Friday, the Gusties will play at home at 7 p.m., and will travel to Northfield, Minn. on Saturday evening for a 7:30 p.m. faceoff. Gustavus enters the series with a 4-7-4 overall record, and 3-2-3 mark in the MIAC, while St. Olaf comes in with at 1-13-1 overall and 0-7-1 in the league.

Last Time Out: Gustavus is coming off of a 3-0 victory over St. Catherine University on Jan. 16 in St. Peter, Minn. Despite outshooting the Wildcats 11-3, both teams went scoreless in the first period. Going into the second period, the two teams continued to battle back and forth, until the Gusties got on the board at the 5:48 mark when senior captain Allison Eder-Zdechlik (Stillwater, Minn.) gathered the puck directly in front of the Wildcat net, and put it through the top left hand corner. The goal was assisted by fellow captain Allie Lewis (Kearney, Neb.) to put the Gusties ahead 1-0. Seconds later, defender Laura Johnson (Chanhassen, Minn.) fired off a slap shot, and Eder-Zdechlik deflected the puck into the goal, her second of the day and 11th of the season at the 5:56 mark. Erin Moes (Hastings, Minn) was also credited with an assist.

The action continued during a Wildcat power play, when first-year Marina Chapman (South Haven, Minn.) scored a shorthanded goal for the Gusties at the 16:28 mark, her second this season. In third period, the Gusties continued to keep their feet on the gas pedal, but despite outshooting the Wildcats 8-4 were unable to score in the final twenty minutes of the game.

St. Olaf most recently lost 3-2 to Saint Benedict on Jan. 16 in St. Joseph, Minn. After a scoreless first period for both teams, the Oles got on the board first at the 12:33 mark after Ole forward Becky Weingarten took a pass from Abbey Smith and knocked it over the shoulder of the Blazer goalie. Only a minute later at the 11:34 mark, Riley Anderson scored off a sequence of passes from Megan Skelly and Jane Vezina. However, in the final twenty minutes of the game, the Blazers fought back, scoring three unanswered goals to earn a one point victory over St. Olaf.

13 MIAC Championships • 11 NCAA Tournament Appearances

The Match Up

Statistical Comparison

Gustavus		St. Olaf
2.40 (4th)	Goals For	1.87 (5th)
2.53 (8th)	Goals Against	3.80 (10th)
18.5% (2nd)	Power Play	14.1% (5th)
83% (8th)	Penalty Kill	81.8% (9th)
+4 (1st)	Special Teams Net	-2 (5th)
7.4 (7th)	Penalty Minutes	6.4 (9th)

2015-16 season averages with MIAC ranks (10 teams)

The Series

Gustavus vs. St. Catherine

All-Time Record	31-2-3
Last Meeting	T 1-1
Current Streak	W-0

Coach Mike Carroll

Overall Record at Gustavus	360-90-31
vs. St. Olaf	34-4-1

Coach John Bazzachini

Overall Record at St. Olaf	83-130-19
----------------------------	-----------

Last Five Seasons	8-1-1
-------------------	-------

Date	Location	Result
12/6/14	St. Peter, Minn.	T 1-1
12/5/14	Northfield, Minn.	W 7-2
12/7/13	Northfield, Minn.	W 2-0
12/6/13	St. Peter, Minn.	W 5-2
2/16/13	St. Peter, Minn.	W 6-2
2/15/13	Northfield, Minn.	W 7-4
2/18/12	Northfield, Minn.	L 5-2
2/17/12	St. Peter, Minn.	W 5-0
11/13/10	Northfield, Minn.	W 6-0
11/12/10	St. Peter, Minn.	W 2-1

** - Denotes NCAA Tournament Quarterfinal Round

Series Snapshot: This weekend's series with St. Olaf marks the 37th and 38th meetings between the Gusties and Oles in women's hockey. The Gusties hold the advantage in the all-time series with a record of 31-2-3 including last season's 7-2 victory and 1-1 tie on Dec 5 and 6, 2014.

About The Oles: St. Olaf enters the series with a 1-13-1 overall record and are currently ranked 10th in the MIAC.

The Oles are led by juniors Megan Skelley and Hannah Forliti. The pair have each tallied nine points this season. Forliti has four goals, followed by five assists, while Skelley has finished two goals and has seven assists.

Young Talent: This year, Gustavus entered the season with 13 returners and 10 newcomers, making it one of its youngest teams in recent years. First-year goaltender Amanda DiNella (Oakbrook Terrace, Ill.) has been a mainstay in the net, currently ranking seventh in the league in saves with 232 and an .903 save percentage. Erin Moes (Fy., Hastings, Minn.) has been an offensive threat with two goals and four assists totaling six points in 14 of the 15 games she has played in this season.

Putting the Power in Power Play: Gustavus has proven to be efficient in power plays this season, ranking second in the MIAC. The Black and Gold average 18.5 percent in power play action. Leading the Gusties in power play scoring is senior captain Allison Eder-Zdechlik who has tallied two goals, followed by one assist.

Gustavus Embarks On 19th Season Of Women's Hockey: The Gustavus women's hockey team is currently in its 19th season. Founded in 1997, the Gusties have attained an all-time record of 389-109-31, which stands as the second winningest program in all of NCAA Division III women's hockey. The Gustie women have won 13 MIAC titles in the 18 years of women's hockey in the conference. Those 14 titles rank first in front of St. Thomas (3), and Augsburg and Saint Mary's, who each have two. Gustavus has also earned the MIAC Playoff crown a total of 11 times, 10 of which have come in the past 12 years and led to 11 NCAA Tournament appearances.

Wearing The "C": In the 18-year history of the Gustavus women's hockey program, 36 players have earned the honor of being a captain. This year, three new players earn that title in senior Allison Eder-Zdechlik, junior Allie Lewis, and sophomore Diana Draayer.

Home Grown Talent: Of the 23 players on this year's roster, 20 are natives of Minnesota. The only players who reside outside the State of Hockey are Courtney Bethune, who hails from Fort Frances, Ontario, Allie Lewis, who is a native of Kearney, Nebraska, and Amanda DiNella from Oakbrook Terrace, Illinois.

Scorers Return: Despite losing two of its top four scorers from its 2014-15 squad, Gustavus will return 62 percent of its scoring from last season, including sophomore Erica Power who led last year's squad with 27 points (9G, 18A) and Allison Eder-Zdechlik who finished tied for second on the team with 20 points (9G, 11A).

A Balanced Approach: Thirteen of the Gusties' 23 players in 2015-16 are returners, and the Gusties also welcome back three of their five All-MIAC selections. However, the Gusties also welcome in 10 first-years, including five forwards, three defenders, and two goalies.



Gustavus Quick Facts

Location:	St. Peter, Minnesota
Address:	800 West College Ave. St. Peter, MN 56082
Founded:	1862
Enrollment:	2,456
Nickname:	Golden Gusties
School Colors:	Black and Gold
Home Ice:	Don Roberts Ice Rink
NCAA Affiliation:	NCAA Division III
Conference:	Minnesota Intercollegiate Athletic
President:	Rebecca M. Bergman
Athletic Director:	Tom Brown
Assistant Athletic Director:	Jared Phillips
Athletic Trainer:	Troy Banse
Equipment Manager:	Jed Friedrich
Sports Information Director:	CJ Siewert
Asst. Sports Information Director:	Nick Hoelmer

Gustavus Hockey Quick Facts

2014-15 Record:	19-5-2
2014-15 MIAC Record/Finish:	15-2-1 / 1st
All-Time Record:	389-109-31
All-Time MIAC Record:	258-31-14
MIAC Championships:	13
Returners/First-years:	13/10
All-MIAC Honorees Returning/Lost:	3/2

Gustavus Under Head Coach Mike Carroll

Year	Overall	MIAC	Conference Finish
1999-00	18-10-1	12-5-1	3rd
2000-01	23-6-1	16-2-0	1st
2001-02	23-5-2	18-0-1	1st
2002-03	14-9-4	11-4-3	3rd
2003-04	22-6-0	16-2-0	2nd
2004-05	25-4-1	17-1-0	1st
2005-06	22-5-2	17-0-1	1st
2006-07	25-3-0	17-1-0	1st
2007-08	25-3-0	18-0-0	1st
2008-09	22-2-4	16-0-2	1st
2009-10	26-6-2	14-3-1	1st
2010-11	22-5-3	14-2-2	1st
2011-12	24-4-2	16-1-1	1st
2012-13	27-2-1	18-0-0	1st
2013-14	17-8-2	14-4-0	2nd
2014-15	19-5-2	15-2-1	1st
2015-16	4-7-4	3-2-3	--
Totals	354-90-31	252-29-16	12 MIAC Titles

Around The League

MIAC Standings

School	Points	MIAC	Overall
Concordia	14	7-1	9-5-1
St. Thomas	13	6-1-1	11-1-1
Augsburg	11	5-2-1	8-6-1
Bethel	1	4-2-2	6-7-2
Gustavus	9	3-2-3	4-7-4
Hamline	7	3-4-1	6-7-2
Saint Benedict	7	3-4-1	5-9-1
Saint Mary's	7	3-4-1	4-9-2
St. Catherine	1	0-7-1	1-10-4
St. Olaf	1	0-7-1	1-13-1

This Weekend in the MIAC

Friday, January 22

Concordia at Augsburg | 7 p.m.

Saint Benedict at Bethel | 7 p.m.

Hamline at Saint Mary's | 7 p.m.

St. Olaf at Gustavus | 7 p.m.

St. Thomas at St. Catherine | 7:30 p.m.

Saturday, January 23

Concordia at Augsburg | 2 p.m.

Saint Mary's at Hamline | 2 p.m.

St. Catherine at St. Thomas | 2 p.m.

Bethel at Saint Benedict | 3 p.m.

Gustavus at St. Olaf | 7:30 p.m.

MIAC Athlete-of-the-Week



Ellie Marvin

Jr., Forward

Shoreview, Minn./Mounds View

Opponent	G	A	P
vs. St. Olaf	2	1	3
at St. Olaf	2	1	3
Totals	4	2	6

USCHO.com Div. III Poll

Rank	School	Overall	Points	Last
1	Plattsburgh	15- 0-0	150	1
2	Elmira	13- 1-1	128	2
3	Adrian	13- 2-0	118	3
4	St. Thomas	11- 1-1	99	4
5	Lake Forest	15- 1-1	88	5
6	Amherst	9- 1-3	67	6
7	Middlebury	7- 3-3	62	7
8	Wisconsin-River Falls	13- 2-1	55	8
9	Castleton	12- 2-2	40	10
10	Norwich	9- 5-0	12	9



Gustavus Record When:

At home	4-2-0
On the road	0-3-4
Neutral Site	0-2-0
vs. MIAC opponents	3-2-3
vs. Non-conference opponents	1-5-1
vs. Top 10 opponents	1-5-0
GAC scores 4 or more goals	3-0-0
GAC scores 3 goals	1-2-0
GAC scores 2 or fewer goals	0-2-5
GAC scores first	4-1-2
Opponent scores first	0-6-2
GAC leads after 1st period	2-0-1
Opponent leads after 1st period	0-2-1
Tied after 1st period	2-4-2
GAC leads after 2nd period	4-2-1
Opponent leads after 2nd period	0-4-0
Tied after 2nd period	0-1-2
In overtime	0-2-3
Games decided by one goal	0-3-0
Games decided by two goals	1-3-0
Games decided by three goals	3-0-0
Games decided by four or more	0-1-0
GAC scores on the power play	4-4-2
GAC scoreless on the power play	0-4-1
GAC scores two or more PP goals	0-0-2
GAC outshoots opponent	3-3-4
GAC outshot by opponent	1-4-0
Shots equal	0-0-0
Tuesday Games	0-0-1
Wednesday Games	0-1-0
Friday Games	2-2-3
Saturday Games	2-3-0
Sunday Games	0-1-0
In November	3-3-2
In December	0-3-1
In January	1-1-1
In February	0-0-0
In March	0-0-0
Following a win	1-2-0
Following a loss	0-4-3
Following a tie	3-1-0
Night games	2-5-4
Day games	2-2-0

Who's Hot

Scoring vs. St. Catherine

Player	Games	Goals	Assists	Points	Point Streak
Allison Eder-zdechlik	2	2	2	4	2
Erin Moes	2	1	1	2	2
Marina Chapman	2	1	0	1	2

Goaltending vs. St. Catherine

Player	Record	Minutes	GA	Saves	Scoreless Str.
Amanda DiNella	1-0-1	125:00	0	35	19:11

2015-16 Season By The Numbers

Largest Victory	3 (3x): last vs. St. Catherine (1/26/16)
Largest Defeat	4: at UW-Stevens Point (1/8/16)
Largest First Period Lead	2: vs. Augsburg (11/21/15)
Largest First Period Deficit	2: at St. Thomas (11/14/15)
Largest Second Period Lead	4: vs. St. Thomas (11/13/15)
Largest Second Period Deficit	4: at No. 7 UW-River Falls (12/9/15)
Most Goals Scored	6: vs. St. Thomas (11/13/15)
Fewest Goals Scored	0 : at UW- Stevens Point (1/8/16)
Most Goals Allowed	5 (2x) Last: vs. No. 1 Plattsburgh (11/29/15)
Fewest Goals Allowed	0: vs. St. Catherine (1/16/16)
Largest Lead	4: vs. St. Thomas (11/13/15)
Largest Lead On Road	1 (3x): last at Saint Benedict (12/4/15)
Largest Lead At Home	4: vs. St. Thomas (11/13/15)
Largest Blown Lead	2: vs. No. 1 Plattsburgh (11/29/15)
Largest Deficit	4: at UW-Stevens Point (1/8/16)
Largest Deficit On Road	4: at UW-Stevens Point (1/8/16)
Largest Deficit At Home	1 (2x) vs. No. 7 UW-River Falls (12/11/15)
Largest Comeback-Win/Tie	1 (2x): last at Augsburg (11/20/15)



Last Time It Happened

COMEBACKS

GAC won when trailing after two periods

December 13, 2014 vs. UW-Stevens Point. Trailing 1-0 early in the third, Gustavus scored three consecutive goals to capture a 3-1 victory.

Opponent won when trailing after two periods

Dec. 5, 2015 vs. Saint Benedict. Gustavus led CSB 2-1 going into third period, but Blazers scored once in third and once in overtime to earn 3-2 victory

Overcame 1-goal deficit and won

GAC: February 21, 2015 vs. Bethel University. Trailing 2-1 after the first, Gustavus won 5-2.

OPP: Dec. 5, 2015 vs. Saint Benedict. Gustavus led 2-1 after second, Saint Ben's won 3-2

Overcame 2-goal deficit and won

GAC: Feb. 29, 2013 vs. Bethel. Gusties trailed 2-0 after two, but came back with three goals in the third for a 3-2 win.

OPP: Nov. 29, 2015 vs. No. 1 Plattsburgh State. Gustavus led Plattsburgh 3-1 going into third period, but Cardinals scored four goals in third period to earn 5-3 win.

Overcame a 3-goal deficit and won

GAC: March 1, 1998 vs. University of Minnesota Club. Gusties scored one in the second and three in the third to win 4-3.

OPP: Never

OVERTIME GAMES

Won overtime game

GAC: March 1, 2012 vs Bethel. Courtney Boucher scored 6:25 in to overtime to win 1-0 and advance to the MIAC Championship.

OPP: Dec. 5, 2015 vs. Saint Benedict

Tied overtime game

Jan 15, 2016 at St. Catherine

SERIES SWEEPS

Swept a 2-game regular season home-home series

GAC: Feb. 6 and 7, 2015 vs. St. Catherine. (4-1 Friday in St. Paul, 1-0 Saturday in St. Peter)

OPP: Jan. 31-Feb. 1, 2014 vs. Saint Benedict. (4-2 Friday night in St. Peter, 4-2 again on Saturday in St. Cloud)

Swept a 2-game regular season home series

GAC: Nov. 14-15, 2014 vs. Concordia. (3-1, 2-0)

OPP: Never

Swept a 2-game regular season away series

GAC: Nov. 15-16, 2013 at Concordia. (4-1, 2-0)

OPP: Never. (MIAC Playoffs: March 10-11, 2000 at Augsburg. (4-1, 2-1)

SHUTOUTS

Last Shutout

GAC: Jan 16, 2016 vs. St. Catherine, 3-0

OPP: Jan. 8, 2016 at UW-Stevens Point, 4-0

Last Home Shutout

GAC: Jan 16, 2016 vs. St. Catherine, 3-0

OPP: Jan. 9, 2015 vs. Adrian 1-0

Last Road Shutout

GAC: Jan. 31, 2015 vs. Saint Benedict, 2-0

OPP: Jan. 8, 2016 at UW-Stevens Point, 4-0

Scoreless Ties (2 in program history)

Jan. 14, 2010 vs. Trinity (Conn.)

Feb. 17, 2009 at UW-Stevens Point

EXTRA ATTACKER GOALS

Scored an extra attacker goal

GAC: Nov. 30, 2014 vs. Middlebury. Lydia Wagner scored w/ 39 sec. left

OPP: Dec. 5, 2015 vs. Saint Benedict. CSB won 3-2

SHORTHANDED GOALS

Scored a shorthanded goal

GAC: Jan 16, 2016 vs. St. Catherine. Marina Chapman scored shorthanded goal in second period to put Gustavus up 3-0.

OPP: Feb. 13, 2015 at St. Thomas. Tara Baago scored shorthanded in the first period of a 5-2 win for the Gusties.

Scored two shorthanded goals

GAC: Nov. 22, 2008 at St. Olaf. Melissa Mackley scored two short-handed goals in the third period. Gusties won 4-2.

OPP: Never

EMPTY NET GOALS

Scored an empty net goal

GAC: Nov. 21, 2015 vs. Augsburg. Allison Eder-Zdechlik scored EN at 18:58 in 4-1 win for the Gusties in St. Peter.

OPP: Feb. 20, 2015 vs. Bethel. Kathryn Larson scored EN at 18:40 of a 4-2 Royal win in Saint Peter.

TEAM GOALS IN A PERIOD

Team scored 5 or more goals in a period

GAC: Feb. 23, 2013 vs. Saint Benedict. The Gusties scored six goals in the second period on their way to an 8-2 victory in St. Peter.

OPP: Dec. 3, 1998 at the University of Minnesota (Mariucci Arena. Gophers scored five goals in the first period and won 8-1.

PENALTY SHOTS

Scored on a penalty shot

GAC: Never.

OPP: March 19, 2011 vs. Middlebury (NCAA 3rd Place Game, Rochester, N.Y.). Penalty shot goal scored after Lindsey Hjelm checking penalty in the second period. Middlebury won 5-0.

PENALTIES

Not penalized

GAC: Jan. 8, 2016 at UW-Stevens Point. Gustavus lost 4-0.

OPP: Dec. 2, 2000 at St. Catherine. St. Kate's won 4-3.

Neither team was penalized

Jan. 30, 1998 at Saint Mary's. Gusties won 6-2.

HAT TRICKS

Last individual 3-goal game

GAC: Nov. 21, 2015 vs. Augsburg. Allison Eder-Zdechlik scored three goals (one even, one shorthanded, one empty net) in a 4-1 Gustavus win in St. Peter.

OPP: Feb. 20, 2015 vs. Bethel. Kathryn Larson scored three goals in 4-2 Royal win.

Last individual 4-goal game

GAC: Dec. 2, 2011 at Augsburg. Allie Schwab scored three PP goals and an even goal in a 9-0 shutout.

OPP: Never.

All goals scored by one player (3+ Goals)

GAC: Never.

OPP: Dec. 2, 2006 at Hamline. Melanie Levielle scored all three goals in a 4-3 loss.

SHOTS ON GOAL

Fewer than 15 shots in a game

GAC: Dec. 3, 1998 at the University of Minnesota, 11 shots. Minnesota won 8-1.

OPP: Dec. 5, 2015 vs. Saint Benedict, 14 shots. CSB won 3-2.

Fewer than 20 shots in a game

GAC: DEC. 11, 2015 VS. UW-RIVER FALLS, 18 shots. Gustavus lost 2-1.

OPP: Dec. 5, 2015 vs. Saint Benedict, 14 shots. CSB won 3-2.

40 or more shots in a game

GAC: Jan. 15, 2016 vs. St. Catherine, 42 shots. Tied 1-1.

OPP: Nov. 29, 2014 at Plattsburgh, 42 shots. Tied 4-4.

50 or more shots in a game

GAC: Feb. 16, 2013 vs. St. Olaf, 51 shots. Gustavus won 6-2.

OPP: Nov. 23, 1998 vs. the University of Minnesota: 51 shots. Minnesota won 6-0.

60 or more shots in a game

GAC: Feb. 15, 2013 at St. Olaf, 61 shots. Gustavus won 7-4.

OPP: Feb. 5, 1998 at Boston College, 65 shots. BC won 10-1.

SINGLE GAME POINTS

Player had four points in a game

GAC: Nov. 13, 2014 vs. St. Thomas. Diana Draayer scored three goals, one assist in 6-4 win over St. Thomas.

OPP: Mar. 18, 2011 vs. Norwich (NCAA Semifinals). Julie Fortier scored three goals with an assist in a 5-4 Norwich victory.

Player had five points in a game

GAC: Dec. 2, 2011 at Augsburg. Allie Schwab scored three PP goals and an even goal with an assist in a 9-0 shutout.

OPP: Mar. 18, 2005 vs. Middlebury. (NCAA Semifinals) Lorna Griffis scored two goals with three assists in a 7-3 Middlebury win.

Player had six or more points in a game

GAC: Feb. 11, 2005 at St. Catherine. Andrea Peterson scored two goals with six assists in a 13-0 win. (Most individual points in a game in program history)

OPP: Jan. 30, 1999 at Middlebury. Michelle Labbe scored three goals with three assists in a 8-0 Middlebury win.





Carroll At A Glance

Hometown

- Edina, Minnesota

Education

- Bachelor's Degree: Recreation, Parks, and Leisure Services (Minnesota State, Mankato '82)

Family

- Wife: Terri
- Children: Matt and Mike

Coaching

- 1983-84 – Assistant Coach, University of St. Thomas
- 1984-85 – Assistant Coach, Fergus Falls High School
- 1986-87 – Head Coach, Fergus Falls Community College
- 1990-99 – Head Coach, Mankato West High School
- 1999-Present – Head Coach, Gustavus Adolphus College

Years At Gustavus: 16

All-time Record: 354-90-31

All-time MIAC Record: 252-31-16

MIAC Titles: 12

MIAC Playoff Titles: 11

NCAA Tournaments: 11

NCAA Tournament Record: 8-16-0

Final Fours: 7

Most Wins In A Season: 27 (2012-13)

Fewest Wins In A Season: 14 (2002-03)

*** All-time winningest coach in Gustavus women's hockey history.

Head Coach Mike Carroll

Mike Carroll is in his 17th season as the women's head hockey coach at Gustavus. Within his tenure behind the Gustie bench, Carroll has turned Gustavus women's hockey into one of the most successful programs in NCAA Division III. He has compiled an overall record of 354-90-31 in 16 seasons and has the most coaching victories in the history of the program.

Last season, the Gustavus women's hockey team regained its spot atop of the MIAC standings, finishing first in the final conference standings with 32 points at 15-2-1. However, the Gusties suffered a 6-3 loss to Bethel University in the MIAC Playoff Semifinals, which brought their season to an end and the team finished with an overall record of 19-5-2.

Carroll has directed the Gusties to 12 MIAC regular season titles (2000-01, 2001-02, 2004-05, 2005-06, 2006-07, 2007-08, 2008-09, 2009-10, 2010-11, 2011-12, 2012-13) and has been named the MIAC Coach-of-the-Year six times (2001-02, 2003-04, 2004-05, 2005-06, 2010-11, 2012-13, 2014-15). In addition to coaching 37 players who have earned All-Conference honors 64 times, he has coached five MIAC Players-of-the-Year in Sarah Garrison, Andrea Peterson, Stefanie Ubl, Allie Schwab, Lindsey Hjelm. Carroll has also worked with 14 players who have earned All-America distinction 22 times and two American Hockey Coaches Association Players-of-the-Year, including four-time MIAC Player-of-the-Year and four-time All-American Andrea Peterson.

Prior to coming to Gustavus, Carroll served as the head boys' hockey coach at Mankato West High School from 1991 to 1999. Carroll's college coaching resume included a stint as head men's hockey coach at Fergus Falls Community College from 1986 to 1987 as well as a season as the assistant men's coach at the University of St. Thomas in 1983.

Carroll, an Edina, Minnesota native, competed in hockey and baseball at Mankato State. After graduating with a degree in municipal recreation in 1982, Carroll played professional baseball in the Montreal Expos organization for two years.

Mike and his wife, Terri, live in Mankato and have two sons, Matt and Mike.

2015-16 Roster Breakdown

Returners (13)

Courtney Bethune
Diana Draayer
Allison Eder-Zdechlik
Katy Fuller
Emily Gustafson
Lindsey Hibbard
Laura Johnson
Kaitlyn Klein
Allie Lewis
Courtney Potter
Erica Power
Emily Reibert
Rachel Skoglund

Newcomers (10)

Kalley Spreiter
Marina Chapman
Georgia Eger
Erin Moes
Madison Bergren
Allie Stanger
Laine Fischer
Brooke Pahlen
Paige Press
Amanda DiNella

By Class

Seniors (3)

Allison Eder-Zdechlik
Lindsey Hibbard
Emily Reibert

Juniors (4)

Courtney Bethune
Emily Gustafson
Allie Lewis
Courtney Potter

Sophomores (6)

Diana Draayer
Katy Fuller
Laura Johnson
Kaitlyn Klein
Erica Power
Rachel Skoglund

First-Years (10)

Madison Bergren
Marina Chapman
Amanda DiNella
Georgia Eger
Laine Fischer
Erin Moes
Brooke Pahlen
Paige Press
Kalley Spreiter

2015-16 Numerical Roster

No.	Name	Yr.	Pos.	Hgt.	Hometown/High School
1	Lindsey Hibbard	Sr.	G	5-6	Princeton, Minn./Princeton
2	Courtney Bethune	Jr.	D	5-8	Fort Frances, Ont./Warroad
3	Emily Reibert	Sr.	F	5-5	Inver Grove Heights, Minn./South St. Paul
4	Diana Draayer	So.	F	5-5	Deephaven, Minn./Minnetonka
5	Rachel Skoglund	So.	D	5-2	Forest Lake, Minn./Forest Lake
6	Emily Gustafson	Jr.	F	5-1	Esko, Minn./Esko
7	Kalley Spreiter	Fy.	F	5-5	Litchfield, Minn./Litchfield
8	Allison Eder-Zdechlik	Sr.	F	5-4	Stillwater, Minn./Stillwater
9	Erica Power	So.	F	5-6	Lakeville, Minn./Apple Valley
10	Marina Chapman	Fy.	D	5-9	South Haven, Minn./Annandale
12	Georgia Eger	Fy.	F	5-3	Stillwater, Minn./Stillwater
14	Katy Fuller	So.	F	5-5	Minneapolis, Minn./Southwest
15	Erin Moes	Fy.	D	5-5	Hastings, Minn./Hastings
16	Madison Bergren	Fy.	F	5-6	Mahtomedi, Minn./Mahtomedi
18	Allie Stanger	Fy.	F	5-11	Paynesville, Minn./Paynesville
19	Allie Lewis	Jr.	F	5-3	Kearney, Neb./Shattuck-Saint Mary's
20	Kaitlyn Klein	So.	F	5-6	Plymouth, Minn./Wayzata
21	Laine Fischer	Fy.	D	5-8	Northfield, Minn./Northfield
22	Brooke Pahlen	Fy.	F	5-6	Lakeville, Minn./Eastview
23	Laura Johnson	So.	D	5-2	Chanhassen, Minn./Chanhassen
24	Courtney Potter	Jr.	D	5-2	Dayton, Minn./Champlin Park
33	Paige Press	Fy.	G	5-3	Cottage Grove, Minn./Park
35	Amanda DiNella	Fy.	G	5-4	Oakbrook Terrace, Ill./Willowbrook

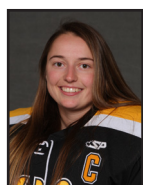
Head Coach: Mike Carroll (17th season)

Assistant Coaches: Courtney Boucher, Steve Carroll, Pat Carroll

Alphabetical Roster/Pronunciation Guide

NO.	NAME	Pronunciation
16	Bergren, Madison	
2	Bethune, Courtney	beth-0ON
10	Chapman, Marina	
35	DiNella, Amanda	
4	Draayer, Diana	DRAY-er
8	Eder-Zdechlik, Allison	ee-der-ZED-lick
12	Eger, Georgia	EGG-er
21	Fischer, Laine	
14	Fuller, Katy	
6	Gustafson, Emily	GUST-uhf-son
1	Hibbard, Lindsey	
23	Johnson, Laura	
20	Klein, Kaitlyn	Kline
19	Lewis, Allie	
15	Moes, Erin	
22	Pahlen, Brooke	PAY-len
9	Power, Erica	
24	Potter, Courtney	
35	Press, Paige	
3	Reibert, Emily	RYE-bert
5	Skoglund, Rachel	SKOHG-lund
7	Spreiter, Kalley	SPRITE-er
18	Stanger, Allie	

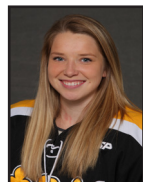
Player Profiles



#1 Lindsey Hibbard
Sr., Goaltender
Princeton, Minn./Princeton

Season Numbers

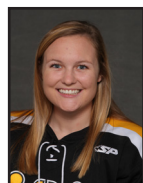
GP	GAA	Save Pct.	Record
5	2.72	.890	1-1-1



#2 Courtney Bethune
Jr., Defender
Fort Frances, Ont./Warroad

Season Numbers

GP	Goals	Assists	Points
14	0	4	4



#3 Emily Reibert
Sr., Forward
Inver Grove Heights, Minn./South St. Paul

Season Numbers

GP	Goals	Assists	Points
12	0	1	1



#4 Diana Draayer
So., Forward
Deephaven, Minn./Minnetonka

Season Numbers

GP	Goals	Assists	Points
13	4	3	7



#5 Rachel Skoglund
So., Defender
Forest Lake, Minn./Forest Lake

Season Numbers

GP	Goals	Assists	Points
13	0	0	0



#6 Emily Gustafson
Jr., Forward
Esko, Minn./Esko

Season Numbers

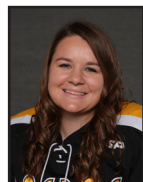
GP	Goals	Assists	Points
7	0	1	1



#7 Kalley Spreiter
Fy., Forward
Litchfield, Minn./Litchfield

Season Numbers

GP	Goals	Assists	Points
14	0	0	0



#8 Allison Eder-Zdechlik
Sr., Forward
Stillwater, Minn./Stillwater

Season Numbers

GP	Goals	Assists	Points
15	11	2	13

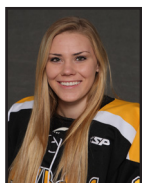


#9 Erica Power
So., Forward
Lakeville, Minn./Apple Valley

Season Numbers

GP	Goals	Assists	Points
15	5	5	11

Player Profiles



#10 Marina Chapman

Fy., Defender
South Haven, Minn./Annandale

Season Numbers

GP	Goals	Assists	Points
15	2	2	4



#12 Georgia Eger

Fy., Forward
Stillwater, Minn./Stillwater

Season Numbers

GP	Goals	Assists	Points
11	2	0	2



#14 Katy Fuller

So., Forward
Minneapolis, Minn./Southwest

Season Numbers

GP	Goals	Assists	Points
15	4	3	7

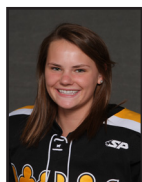


#15 Erin Moes

Fy., Defender
Hastings, Minn./Hastings

Season Numbers

GP	Goals	Assists	Points
14	2	4	6



#16 Madison Bergren

Fy., Forward
Mahtomedi, Minn./Mahtomedi

Season Numbers

GP	Goals	Assists	Points
15	0	2	2

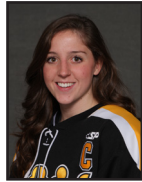


#18 Allie Stanger

Fy., Forward
Paynesville, Minn./Paynesville

Season Numbers

GP	Goals	Assists	Points
13	0	0	0

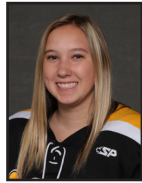


#19 Allie Lewis

Jr., Forward
Kearney, Neb./Shattuck-St. Mary's

Season Numbers

GP	Goals	Assists	Points
15	0	2	2



#20 Kaitlyn Klein

So., Forward
Plymouth, Minn./Wayzata

Season Numbers

GP	Goals	Assists	Points
8	3	3	6



#21 Laine Fischer

Fy., Defender
Northfield, Minn./Northfield

Season Numbers

GP	Goals	Assists	Points
15	2	2	4



Player Profiles



#22 Brooke Pahlen
Fr., Forward
Lakeville, Minn./Eastview

Season Numbers

GP	Goals	Assists	Points
7	0	0	0



#23 Laura Johnson
So., Defender
Chanhausen, Minn./Chanhausen

Season Numbers

GP	Goals	Assists	Points
11	1	2	3



#24 Courtney Potter
Jr., Defender
Dayton, Minn./Champlin Park

Season Numbers

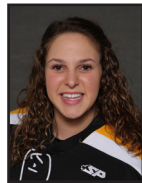
GP	Goals	Assists	Points
14	0	2	2



#33 Paige Press
Fr., Goaltender
Cottage Grove, Minn./Park

Season Numbers

GP	GAA	Save Pct.	Record
3	3.85	.800	0-1-0



#35 Amanda DiNella
Fr., Goaltender
Oakbrook Terrace, Ill./Willowbrook

Season Numbers

GP	GAA	Save Pct.	Record
12	2.28	.903	3-6-3

The Automated ScoreBook Gustavus Adolphus Game Results (as of Jan 21, 2016) All games

Date	Opponent	Score	Shots	Overall	Conf	Time	Att.	Goalie of record
Nov 03	at UW-Superior	Tot 2-2	40/29	0-0-1	0-0-0	2:15h	123	Lindsey Hibbard
Nov 06	ST. OLAF	W 4-1	36/25	1-0-1	0-0-0	2:00	257	Amanda DiNella
* Nov 13	#4 UST-WOM	W 6-4	20/26	2-0-1	1-0-0	2:28	247	Lindsey Hibbard
* Nov 14	at UST-WOM	L 3-5	19/34	2-1-1	1-1-0	1:55	200	Amanda DiNella
* 11/20/15	at Augsburg College	Tot 2-2	31/27	2-1-2	1-1-1	2:03	201	Amanda DiNella
* Nov 21	AUGSBURG COLLEGE	W 4-1	31/22	3-1-2	2-1-1	1:51	378	Amanda DiNella
Nov 28	vs #2 Elmira	L 1-2	24/19	3-2-2	2-1-1	1:55	212	Amanda DiNella
Nov 29	vs #1 Plattsburgh	L 3-5	22/39	3-3-2	2-1-1	2:20	219	Amanda DiNella
* Dec 04	at Saint Benedict	Tot 2-2	39/21	3-3-3	2-1-2	2:00	257	Amanda DiNella
* Dec 05	SAINT BENEDICT	Lot 2-3	40/14	3-4-3	2-2-2	2:02	165	Lindsey Hibbard
Dec 09	at #8 UW-River Falls	L 2-4	22/27	3-5-3	2-2-2	1:50	168	Amanda DiNella
Dec 11	#8 UW-RIVER FALLS	Lot 1-2	18/23	3-6-3	2-2-2	2:02	228	Amanda DiNella
Jan 08	at UW-Stevens Point	L 0-4	26/21	3-7-3	2-2-2	1:48	118	Amanda DiNella
* Jan 16	ST. CATHERINE UNIV.	W 3-0	33/15	4-7-3	3-2-2	2:00	111	Amanda DiNella
* Jan 15	at St. Catherine Univ.	Tot 1-1	42/21	4-7-4	3-2-3	1:58	145	Amanda DiNella

Team Record	W-L-T	Attendance	Dates	Total	Avg.
Overall:	4-7-4	Total:	15	3029	202
Conference:	3-2-3	Home:	6	1386	231
Home:	4-2-0	Away:	7	1212	173
Away:	0-3-4	Neutral:	2	431	216
Neutral:	0-2-0				
Overtime:	0-2-4				



The Automated ScoreBook
Gustavus Adolphus Overall Team Statistics (as of Jan 21, 2016)
All games

Overall: 4-7-4 Conf: 3-2-3 Home: 4-2-0 Away: 0-3-4 Neut: 0-2-0

TEAM STATISTICS	CAC	OPP
SHOT STATISTICS		
Goals-Shot attempts	36-443	38-363
Shot pct.	.081	.105
Goals/Game	2.4	2.5
Shots/Game	29.5	24.2
Assists	39	46
POWER PLAYS		
Goals-Power Plays	9-52	9-51
Conversion Percent	.173	.176
Shot Attempts	72	85
Shot Percent	.125	.106
GOAL BREAKDOWN		
Total Goals	36	38
Power Play	9	9
Short-handed	6	2
Empty net	1	0
Penalty	0	0
Unassisted	8	8
Overtime	0	2
Shootout	0	0
Delayed Penalty	0	0
PENALTIES		
Number	54	55
Minutes	111	110
Penalties/Game	3.6	3.7
Pen minutes/Game	7.4	7.3
Minor	53	55
Major	1	0
10-minute Misconduct	0	0
Game Misconduct	0	0
Gross Misconduct	0	0
Match	0	0
SHOOTOUTS (Made-Att)	0-0	0-0
ATTENDANCE		
Total	1386	1212
Dates/Avg Per Date	6/231	7/173
Neutral Site */Avg	2/216	

Goals by Period	1st	2nd	3rd	OT	Total
Gustavus Adolphus	9	19	8	0	36
Opponents	9	9	18	2	38

Saves by Period	1st	2nd	3rd	OT	Total
Gustavus Adolphus	111	113	92	9	325
Opponents	129	136	129	13	407

The Automated ScoreBook
Gustavus Adolphus Category Leaders (as of Jan 21, 2016)
All games

## Points	GP	G	A	Pts	Sh
8 A. Eder-Zdechlik	15	11	4	15	58
9 Erica Power	15	5	5	10	52
4 Diana Draayer	13	4	3	7	32
14 Katy Fuller	15	4	3	7	40
20 Kaitlyn Klein	8	3	3	6	21
15 Erin Moes	13	2	4	6	29
10 Marina Chapman	15	2	2	4	35
21 Laine Fischer	15	2	2	4	38
23 Laura Johnson	11	1	2	3	11
2 Courtney Bethune	14	0	3	3	11

## Goals	GP	G	A	Pts	Sh
8 A. Eder-Zdechlik	15	11	4	15	58
9 Erica Power	15	5	5	10	52
4 Diana Draayer	13	4	3	7	32
14 Katy Fuller	15	4	3	7	40
20 Kaitlyn Klein	8	3	3	6	21
15 Erin Moes	13	2	4	6	29
10 Marina Chapman	15	2	2	4	35
21 Laine Fischer	15	2	2	4	38
12 Georgia Eger	11	2	0	2	16
23 Laura Johnson	11	1	2	3	11

## Power-Play Goals	GP	PPG
8 A. Eder-Zdechlik	15	2
14 Katy Fuller	15	2

## Short-Handed Goals	GP	SHG
8 A. Eder-Zdechlik	15	3
4 Diana Draayer	13	1
21 Laine Fischer	15	1
10 Marina Chapman	15	1

## Game-Winning Goals	GP	GWG
4 Diana Draayer	13	2
8 A. Eder-Zdechlik	15	2

## Plus/Minus	GP	+/-
2 Courtney Bethune	14	+6
8 A. Eder-Zdechlik	15	+5
4 Diana Draayer	13	+3
20 Kaitlyn Klein	8	+3
9 Erica Power	15	+2
16 Madison Bergren	15	+2
24 Courtney Potter	14	+2
15 Erin Moes	13	+1
7 Kalley Spreiter	13	+1
19 Allie Lewis	15	+1

## Assists	GP	G	A	Pts	Sh
9 Erica Power	15	5	5	10	52
8 A. Eder-Zdechlik	15	11	4	15	58
15 Erin Moes	13	2	4	6	29
4 Diana Draayer	13	4	3	7	32
14 Katy Fuller	15	4	3	7	40
20 Kaitlyn Klein	8	3	3	6	21
2 Courtney Bethune	14	0	3	3	11
10 Marina Chapman	15	2	2	4	35
21 Laine Fischer	15	2	2	4	38
23 Laura Johnson	11	1	2	3	11

## Shots	GP	G	A	Pts	Sh	Sh%
8 A. Eder-Zdechlik	15	11	4	15	58	.190
9 Erica Power	15	5	5	10	52	.096
14 Katy Fuller	15	4	3	7	40	.100
21 Laine Fischer	15	2	2	4	38	.053
10 Marina Chapman	15	2	2	4	35	.057
4 Diana Draayer	13	4	3	7	32	.125
15 Erin Moes	13	2	4	6	29	.069
20 Kaitlyn Klein	8	3	3	6	21	.143
19 Allie Lewis	15	0	2	2	20	.000
16 Madison Bergren	15	0	2	2	16	.000

## Shot Pct.	GP	G	A	Pts	Sh	Sh%
8 A. Eder-Zdechlik	15	11	4	15	58	.190
20 Kaitlyn Klein	8	3	3	6	21	.143
4 Diana Draayer	13	4	3	7	32	.125
12 Georgia Eger	11	2	0	2	16	.125
14 Katy Fuller	15	4	3	7	40	.100
9 Erica Power	15	5	5	10	52	.096
23 Laura Johnson	11	1	2	3	11	.091
15 Erin Moes	13	2	4	6	29	.069
10 Marina Chapman	15	2	2	4	35	.057
21 Laine Fischer	15	2	2	4	38	.053

## Penalties	GP	Pen	Min
10 Marina Chapman	15	7	14
14 Katy Fuller	15	6	12
23 Laura Johnson	11	5	10
12 Georgia Eger	11	4	8
24 Courtney Potter	14	4	8
16 Madison Bergren	15	4	8
4 Diana Draayer	13	4	8
15 Erin Moes	13	3	6
TM TEAM	1	3	6
19 Allie Lewis	15	3	6

## Penalty Minutes	GP	Pen	Min
10 Marina Chapman	15	7	14
14 Katy Fuller	15	6	12
23 Laura Johnson	11	5	10
16 Madison Bergren	15	4	8
12 Georgia Eger	11	4	8
4 Diana Draayer	13	4	8
24 Courtney Potter	14	4	8
15 Erin Moes	13	3	6
TM TEAM	1	3	6
19 Allie Lewis	15	3	6



The Automated ScoreBook
Gustavus Adolphus Combined Team Statistics (as of Jan 21, 2016)
All games

Date	Opponent	Score	At.
Nov 03	at UMF-Superior	W 2-2	123
Nov 06	ST. CLAF	W 4-1	257
Nov 13	at UST-WOM	W 6-4	207
Nov 14	at UST-WOM	L 3-5	208
Nov 20/15	at Augsburg College	W 2-2	201
Nov 21	AUGSBURG COLLEGE	W 4-1	370
Nov 28	vs #2 Elmira	L 1-2	212
Nov 29	vs #1 Philadelphia	L 3-5	219
Dec 04	at Saint Benedict	W 2-2	257
Dec 05	SAINT BENEDICT	L 2-3	165
Dec 08	at #8 UMF-River Falls	L 2-4	168
Dec 11	at UMF-RIVER FALLS	L 1-2	228
Jan 08	at UMF-Stevens Point	L 0-4	118
Jan 16	ST. CATHERINE UNIV.	W 3-0	111
Jan 15	at St. Catherine Univ.	W 1-1	145

TEAM STATISTICS	GAC	OPP
SHOT STATISTICS		
Goals-Shot attempts	36-443	38-363
Shot p.c.	.081	.105
Goals/Game	2.4	2.5
Shots/Game	29.5	34.2
POWER PLAYS		
Goals-Power Plays	5-62	5-51
Conversion Percent	.173	.176
Shot Attempts	72	85
Shot Percent	.125	.106
GOAL BREAKDOWN		
Power Play	9	9
Short-handed	6	2
Empty net	1	0
Penalty	0	0
Unassisted	8	8
Overtime	0	2
Shootout	0	0
Delayed Penalty	0	0
PENALTIES		
Number	54	55
Minutes	111	110
Penalties/Game	3.6	3.7
Pen minutes/Game	7.4	7.3
SHOOTOUTS (Make-Miss)	0-0	0-0

Record:	Overall	Home	Away	Neutral
ALL GAMES	4-7-4	4-2-0	0-3-4	0-2-0
CONFERENCE	3-2-3	3-1-0	0-1-3	0-0-0
NON-CONFERENCE	1-5-1	1-1-0	0-2-1	0-2-0

#	Player	gp	g	a	pts	sh	sh%	pen-min	ppg	sh
8	A. Eder-Zdechlik	15	11	4	15	58	.190	2-4	2	3
9	Erica Power	15	5	5	10	52	.096	1-5	1	0
4	Diana Drayer	13	4	3	7	32	.125	4-8	0	1
14	Katy Fuller	15	4	3	7	40	.100	6-12	2	0
28	Kaitlyn Klein	4	3	3	6	21	.143	1-2	1	0
15	Erin Moes	13	2	4	6	29	.069	3-6	0	0
18	Marina Chapman	15	2	2	4	35	.057	7-14	1	1
21	Laine Fischer	15	2	2	4	38	.053	3-6	0	1
23	Laura Johnson	11	1	2	3	11	.091	5-10	1	0
2	Courtney Bethune	14	0	3	3	11	.000	0-0	0	0
12	Georgia Eger	11	2	0	2	16	.125	4-8	1	0
16	Madison Bergren	15	0	2	2	16	.000	4-8	0	0
19	Allie Lewis	15	0	2	2	20	.000	3-6	0	0
24	Courtney Potter	14	0	2	2	10	.000	4-8	0	0
6	Emily Gustafson	7	0	1	1	10	.000	0-0	0	0
3	Emily Reibert	12	0	1	1	10	.000	0-0	0	0
22	Brodie Pahlten	7	0	0	0	1	.000	1-2	0	0
5	Rachel Skoglund	13	0	0	0	15	.000	1-2	0	0
7	Kaitlyn Spreiter	13	0	0	0	11	.000	1-2	0	0
18	Allie Stanger	13	0	0	0	7	.000	1-2	0	0
TM TEAM		1	0	0	0	0	.000	3-6	0	0
Total		15	36	39	75	443	.081	54-111	9	6
Opponents		15	38	46	84	363	.105	55-110	9	2

#	Goalie	gp	min	ga	goals	saves	save%	w-l-t
35	Alexandra DiNella	12	657:22	25	228	232	.908	3-6-3
1	Lindsey Hibbard	5	220:21	10	272	81	.890	1-1-1
33	Paige Press	4	45:43	3	385	12	.800	0-0-0
TM EMPTY NET		1	1:06	0	-	0	.000	0-0-0
Total		15	925:32	38	246	325	.895	4-7-4
Opponents		15	925:32	36	233	407	.919	7-4-4

Attendance Summary	GAC	Opponent
Total	1306	1212
Dates/avg Per Date	6/231	7/173
Neutral Site Avg	20216	

Goals by Period	1st	2nd	3rd	OT	Total
Gustavus Adolphus	9	19	8	0	36
Opponents	9	9	18	2	38

Saves by Period	1st	2nd	3rd	OT	Total
Gustavus Adolphus	111	113	92	9	325
Opponents	129	136	129	13	407