



2015-16 Gustavus Adolphus College Women's Hockey Media Guide


Gustavus Sports Information

800 W College Ave, St. Peter, MN 56082
gustavus.edu/athletics
(507) 933-7647 • sportsinfo@gustavus.edu

Women's Hockey Media Contact
Nick Hoelmer, Asst. Sports Information Director
(507) 933-8411 • nhoelmer@gustavus.edu


Follow Gustavus Athletics Online

 Twitter
@GustieAthletics

 Facebook
facebook.com/GustieAthletics

 Snap Chat
Username: Gusties

 Flickr
flickr.com/photos/gogusties

 YouTube
youtube.com/gustavusathletics

 Instagram
@gustieathletics

2015-16 SCHEDULE

DATE	OPPONENT	TIME/RESULT
NOVEMBER		
3	UW-Superior	T 2-2
6	ST. OLAF COLLEGE (Non-Conference)	W 4-1
13	NO. 4 UNIVERSITY OF ST. THOMAS	W 6-4
14	No. 4 University of St. Thomas	L 3-5
20	Augsburg College	T 2-2
21	AUGSBURG COLLEGE	W 4-2
28	No. 2 Elmira College (Panther Classic)	L 1-2
29	No. 1 Plattsburgh State (Panther Classic)	L 3-5
DECEMBER		
4	College of Saint Benedict	7:30 p.m.
5	COLLEGE OF SAINT BENEDICT	2 P.M.
9	No. 8 UW-River Falls	7 p.m.
11	NO. 8 UW-RIVER FALLS	7 P.M.
JANUARY		
8	UW-Stevens Point	7 p.m.
15	St. Catherine University	7:30 p.m.
16	ST. CATHERINE UNIVERSITY	2 p.m.
22	ST. OLAF COLLEGE	7 P.M.
23	St. Olaf College	7:30 p.m.
29	Concordia College	7 p.m.
30	Concordia College	2 p.m.
FEBRUARY		
5	Saint Mary's University	7 p.m.
6	SAINT MARY'S UNIVERSITY	2 P.M.
12	Bethel University	7 p.m.
13	BETHEL UNIVERSITY	2 P.M.
19	Hamline University	7 p.m.
20	HAMLINE UNIVERSITY	2 P.M.

HOME GAMES IN BOLD AND CAPS



9 Gustavus Adolphus College

Golden Gusties
(3-3-2 Overall, 2-1-1 MIAC)
vs.

College of Saint Benedict

Blazers
(1-5-0 Overall, 0-4-0 MIAC)



Game 9

Date: Friday, December 4 • **Time:** 7:30 p.m. • **Location:** St. Cloud, Minn.

Arena: Dave Torrey Arena

Live Video/Stats: <http://portal.stretchinternet.com/csb/>

Live Audio: http://www.kjnradio.org/?page_id=235

Game 10

Date: Saturday, December 5 • **Time:** 2 p.m. • **Location:** St. Peter, Minn.

Arena: Don Roberts Ice Rink

Live Video/Audio: <http://portal.stretchinternet.com/gac/>

Live Stats: <https://gustavus.edu/athletics/whky/LIVE/xlive.htm>

Setting The Scene: After a trip to Vermont in which it competed against the nation's top two ranked teams, the Gustavus Adolphus College women's hockey team returns to MIAC play this weekend where it will take on the College of Saint Benedict. On Friday, Gustavus heads to St. Cloud, Minnesota for a 7:30 p.m. contest at Dave Torrey Arena. Saturday, the Gusties and Blazers come to St. Peter and will play the series finale at Don Roberts Ice Rink at 2 p.m.

Last Time Out: Gustavus most recently competed in the Panther/Cardinal Classic that was held at Middlebury College this past weekend. On Saturday, the Gusties took on No. 2 Elmira College. Gustavus came out of the gates firing, as it tallied five shots within the first five minutes of play, and notched its first goal at the 11:43 mark on a power play goal from Allison Eder-Zdechlik (Sr., Stillwater, Minn.). From that point, momentum began to trickle to Elmira's side. With 3:30 remaining in the first period, Elmira's Kristin Chivers laced a shot from the right side that hit the far pipe. At 19:40, the Soaring Eagles tied the score at 1-1 when Louisa Lippiatt Durnell rifled a shot from between the circles' top shelf to the far pipe off assists from Chivers and Anna Tude. The Gusties and Soaring Eagles were scoreless in the second period, and neither team was afforded many scoring opportunities in the third, but Elmira took advantage of one of its few early on when Olivia Nystrom tipped in a rebound from Kyra McDonald at the near pipe just 1:37 into the period to give the Soaring Eagles a 2-1 lead that would hold for the remainder of the game. Gustavus actually scored the game-tying goal at 18:54, but referees disallowed the goal due to a hand pass off a deflected shot in front of the net and the game finished with Elmira on top 2-1.

On Sunday, the Gusties took on two-time defending national champion and current No. 1 Plattsburgh State University. The Cardinals didn't wait long to flex their muscles, scoring a goal in the first five minutes to take a 1-0 lead. However, the Gusties did not back down, as Eder-Zdechlik, Marina Chapman (Fy., South Haven, Minn.), and Katy Fuller (So., Minneapolis, Minn.) each scored goals before the third period to give Gustavus a 3-1 lead heading into the final 20 minutes. However, in that third period, Plattsburgh State proved why it is the nation's No. 1 ranked squad, and scored four goals between the 4:02 and 8:27 marks to give the Cardinals a 5-3 advantage that would hold for the remainder of the contest.

Meanwhile, the College of Saint Benedict is coming off two straight losses to Hamline University on Nov. 20 and 21. On Nov. 20 in St. Paul, the Blazers fell 5-1 to the Pipers. Hamline spread its scoring out fairly evenly, scoring twice in the first period, once in the second on a shorthanded goal, and twice more in the third. Saint Benedict scored its lone goal of the evening at the 10:28 mark of the second on an unassisted power play goal from Brigitte Miller.

On Nov. 21 in St. Cloud, a much closer game took place, as neither team found the net until the third period. There, at the 11:22 mark, Hamline's Jamie Nowicki notched the game's lone goal off an assist from Megan Lawry to give Hamline a clean sweep of the Blazers on the weekend.

13 MIAC Championships • 11 NCAA Tournament Appearances

The Match Up

Statistical Comparison

Gustavus		Saint Benedict
3.12 (3rd)	Goals For	0.83 (9th)
2.75 (8th)	Goals Against	3.62 (10th)
20.0% (3rd)	Power Play	5% (9th)
77.8 (7th)	Penalty Kill	88.5% (2nd)
+3 (1st)	Special Teams Net	-4 (T-7th)
9.4 (2nd)	Penalty Minutes	9.3 (3rd)

2015-16 season averages with MIAC ranks in all games (10 teams)

The Series

Gustavus vs. Saint Benedict

All-Time Record	35-2-0
Last Meeting	W 2-0
Current Streak	W2

Coach Mike Carroll

Overall Record at Gustavus	353-86-29
vs. Saint Benedict	35-2-0

Coach Jennifer Kranz

Overall Record at Saint Bened	25-66-9
vs. Gustavus	2-6-0

Last Five Seasons	8-2-0
-------------------	-------

Date	Location	Result
1/31/15	St. Cloud, Minn.	W 2-0
1/30/15	St. Peter, Minn.	W 3-0
2/1/14	St. Cloud, Minn.	L 2-4
1/31/14	St. Peter, Minn.	L 2-4
2/23/13	St. Peter, Minn.	W 8-2
2/22/13	St. Cloud, Minn.	W 1-0
2/25/12	St. Cloud, Minn.	W 7-2
2/24/12	St. Peter, Minn.	W 9-1
1/22/11	St. Peter, Minn.	W 2-1
1/21/11	St. Cloud, Minn.	W 8-1

* - Denotes MIAC Playoff Game

** - Denotes MIAC Championship Game

Series Snapshot: This weekend's series with the Blazers mark the 38th and 39th meetings between the Gusties and Blazers in women's hockey. The Gusties hold the advantage in the all-time series with a record of 35-2-0, with the two losses both coming during the 2013-14 season. Last season, Gustavus swept Saint Benedict without allowing a goal, picking up 3-0 and 2-0 victories on Jan. 30 and 31.

About The Blazers: Saint Benedict is off to a 1-5-0 start in the 2015-16 season, with its victory coming over Marian University on Nov. 7 in Fond Du Lac, Wis. The Blazers have struggled to put the puck in the net so far this season, and rank ninth in the MIAC in goals scored with five total on the season and rank 10th in goals allowed. However, Saint Benedict is particularly effective on the penalty kill, as it ranks second in the MIAC with an 88.5 percent kill rate.

The Blazers are led in scoring by sophomore forward Brigitte Miller, who has a team-leading three points off two goals and one assist on the season. Saint Benedict has used two goalies regularly, with Angel Hillstrom receiving a slight majority in minutes played with 215:47. Hillstrom has posted a record of 1-2-0, save percentage of .942, and goals against average of 2.22.

Eder-Zdechlik On Fire; Named MIAC Women's Hockey Athlete of the Week, Gustavus November Female Athlete of the Month:

Senior forward Allison Eder-Zdechlik (Stillwater, Minn.) has proven to be an offensive juggernaut for the Gusties this season, and she continued her impressive scoring streak with a goal in each game against the nation's two best teams this past weekend. Eder-Zdechlik has now scored a goal in five-straight games, and recorded at least one point in seven-straight as she lit the lamp against both No. 2 Elmira and No. 1 Plattsburgh State, and now leads the MIAC in points (11), goals (9) (good for fourth in the nation), and has a plus-five rating with one hat trick and one game-winner.

For her accomplishments against Elmira and Plattsburgh, Eder-Zdechlik was named the MIAC's women's hockey athlete of the week on Monday by the MIAC's sports information directors, and was also honored as Gustavus's November Female Athlete of the Month, as voted on by the Gustavus Sports Information Department.

Power Play Prowess: Gustavus has had a strong presence on the power play this season, scoring six goals in 30 opportunities to tally a 20 percent success rate.

Klein On Road To Recovery: Sophomore forward Kaitlyn Klein (Plymouth, Minn.) is on the road to recovery after suffering a broken neck during last Sunday's game against Plattsburgh State. Klein is now back home after having successful surgery at the University of Vermont Medical Center to repair her C7 vertebrae. As a result of her current condition, Klein will not be able to finish the semester at Gustavus, but Coach Mike Carroll said she is expected to make a full recovery.

Boucher's Blurp: Each week, we interview Gustavus assistant coach Courtney Boucher to gather her thoughts on current topics within the program. This week:

On the team's play against the nation's top two teams: "We stayed competitive for a majority of the time. There were some things that happened that were outside our control, but we learned a lot about where we're at and where we feel we can be going forward into the remainder of the conference schedule. It's a good experience to play against some of those tough eastern teams that we don't normally get a chance to see."

Team's favorite things to embark on during long road trips: "Our plane ride to Vermont brought a lot of naps, so a lot of pillows were being used. Marina Chapman, our first-year resident entertainer, made a team quiz on different things about the team, team history, and there was a creative section where everyone had to draw. That kept the team busy for a good chunk of the time. We also like our comedy movies, so Bridesmaids and The Heat have been popular this season."

Keys to this weekend series: "We want to come out, give full effort, and string together three full periods. We also want to stay out of the box, as we've been getting into too much penalty trouble as of late. If we play our game and work hard, hopefully the bounces will go our way, and we'll be able to get 'er done."

Gusties In The Polls: Gustavus is ranked ninth in the most recent USCHO.com Division III Women's Hockey Poll, which was released Monday. This week marks the 96th consecutive time that the Gusties have been ranked in the USCHO.com poll.

Gustavus Embarks On 19th Season Of Women's Hockey: The Gustavus women's hockey team is currently in its 19th season. Founded in 1997, the Gusties have attained an all-time record of 389-105-30, which stands as the second winningest program in all of NCAA Division III women's hockey. The Gustie women have won 13 MIAC titles in the 18 years of women's hockey in the conference. Those 14 titles rank first in front of St. Thomas (3), and Augsburg and Saint Mary's, who each have two. Gustavus has also earned the MIAC Playoff crown a total of 11 times, 10 of which have come in the past 12 years and led to 11 NCAA Tournament appearances.

Wearing The "C": In the 18-year history of the Gustavus women's hockey program, 35 players have earned the honor of being a captain. This year, two new players earn that title in junior Allie Lewis and sophomore Diana Draayer.

Home Grown Talent: Of the 23 players on this year's roster, 20 are natives of Minnesota. The only players who reside outside the State of Hockey are Courtney Bethune, who hails from Fort Frances, Ontario, Allie Lewis, who is a native of Kearney, Nebraska, and Amanda DiNella from Oakbrook Terrace, Illinois.

Scorers Return: Despite losing two of its top four scorers from its 2014-15 squad, Gustavus will return 62 percent of its scoring from last season, including sophomore Erica Power who led last year's squad with 27 points (9G, 18A) and Allison Eder-Zdechlik who finished tied for second on the team with 20 points (9G, 11A).

A Balanced Approach: Thirteen of the Gusties' 23 players in 2015-16 are returners, and the Gusties also welcome back three of their five All-MIAC selections. However, the Gusties also welcome in 10 first-years, including five forwards, three defenders, and two goalies.



Gustavus Quick Facts

Location:	St. Peter, Minnesota
Address:	800 West College Ave. St. Peter, MN 56082
Founded:	1862
Enrollment:	2,456
Nickname:	Golden Gusties
School Colors:	Black and Gold
Home Ice:	Don Roberts Ice Rink
NCAA Affiliation:	NCAA Division III
Conference:	Minnesota Intercollegiate Athletic
President:	Rebecca M. Bergman
Athletic Director:	Tom Brown
Assistant Athletic Director:	Jared Phillips
Athletic Trainer:	Troy Banse
Equipment Manager:	Jed Friedrich
Sports Information Director:	CJ Siewert
Asst. Sports Information Director:	Nick Hoelmer

Gustavus Hockey Quick Facts

2014-15 Record:	19-5-2
2014-15 MIAC Record/Finish:	15-2-1 / 1st
All-Time Record:	389-105-30
All-Time MIAC Record:	258-30-13
MIAC Championships:	13
Returners/First-years:	13/10
All-MIAC Honorees Returning/Lost:	3/2

Gustavus Under Head Coach Mike Carroll

Year	Overall	MIAC	Conference Finish
1999-00	18-10-1	12-5-1	3rd
2000-01	23-6-1	16-2-0	1st
2001-02	23-5-2	18-0-1	1st
2002-03	14-9-4	11-4-3	3rd
2003-04	22-6-0	16-2-0	2nd
2004-05	25-4-1	17-1-0	1st
2005-06	22-5-2	17-0-1	1st
2006-07	25-3-0	17-1-0	1st
2007-08	25-3-0	18-0-0	1st
2008-09	22-2-4	16-0-2	1st
2009-10	26-6-2	14-3-1	1st
2010-11	22-5-3	14-2-2	1st
2011-12	24-4-2	16-1-1	1st
2012-13	27-2-1	18-0-0	1st
2013-14	17-8-2	14-4-0	2nd
2014-15	19-5-2	15-2-1	1st
2015-16	3-1-2	2-1-1	--
Totals	353-84-29	251-28-14	12 MIAC Titles

Around The League

MIAC Standings

School	Points	MIAC	Overall
Concordia	8	4-0-0	5-3-0
Hamline	7	3-0-1	4-2-2
Augsburg	5	2-1-1	3-3-1
Gustavus	5	2-1-1	3-3-2
Saint Mary's	5	2-1-1	3-3-1
St. Thomas	5	2-1-1	4-1-1
Bethel	4	1-1-2	1-4-2
St. Olaf	1	0-3-1	0-7-1
Saint Benedict	0	0-4-0	1-5-0
St. Catherine	0	0-4-0	0-5-2

This Weekend in the MIAC

Thursday, December 3

Bethel at St. Catherine | 7:30 p.m.

Friday, December 4

Gustavus at Saint Benedict | 7:30 p.m.

St. Catherine at Bethel | 7 p.m.

Concordia at Saint Mary's | 7 p.m.

St. Thomas at Hamline | 7 p.m.

Augsburg at St. Olaf | 7:30 p.m.

Sunday, November 29

Saint Benedict at Gustavus | 2 p.m.

Concordia at Saint Mary's | 2 p.m.

Hamline at St. Thomas | 2 p.m.

St. Olaf at Augsburg | 7 p.m.

MIAC Athlete-of-the-Week



Allison Eder-Zdechlik

Sr., Forward

Stillwater, Minn./Stillwater

Opponent	G	A	P
vs. No. 2 Elmira	1	0	1
vs. No. 1 Plattsburgh State	1	0	1
Totals	2	0	2

USCHO.com Div. III Poll

Rank	School	Overall	Points	Last
1	Plattsburgh (15)	9-0-0	150	1
2	Elmira	7-1-0	130	2
3	Middlebury	3-1-0	108	3
4	Adrian	6-2-0	98	4
5	Lake Forest	8-0-1	93	5
6	St. Thomas	4-1-1	81	6
7	Norwich	6-2-0	64	7
8	Wisconsin-River Falls	6-2-0	54	8
9	Gustavus Adolphus	3-3-2	19	9
10	Castleton	8-1-1	18	10



Gustavus Record When:

At home	3-0-0
On the road	0-1-2
Neutral Site	0-2-0
vs. MIAC opponents	2-1-1
vs. Non-conference opponents	1-2-1
vs. Top 10 opponents	1-3-0
GAC scores 4 or more goals	3-0-0
GAC scores 3 goals	0-2-0
GAC scores 2 or fewer goals	0-1-2
GAC scores first	3-1-1
Opponent scores first	0-2-1
GAC leads after 1st period	2-0-1
Opponent leads after 1st period	0-1-1
Tied after 1st period	1-2-0
GAC leads after 2nd period	3-1-0
Opponent leads after 2nd period	0-1-0
Tied after 2nd period	0-1-1
In overtime	0-0-2
Games decided by one goal	0-1-0
Games decided by two goals	1-2-0
Games decided by three goals	2-0-0
Games decided by four or more	0-0-0
GAC scores on the power play	3-3-1
GAC scoreless on the power play	0-0-0
GAC scores two or more PP goals	0-0-1
GAC outshoots opponent	2-1-2
GAC outshot by opponent	1-2-0
Shots equal	0-0-0
Tuesday Games	0-0-1
Friday Games	2-0-1
Saturday Games	1-2-0
Sunday Games	0-1-0
In November	3-3-2
In December	0-0-0
In January	0-0-0
In February	0-0-0
In March	0-0-0
Following a win	1-2-0
Following a loss	0-1-1
Following a tie	2-0-0
Night games	2-2-2
Day games	1-1-0

Who's Hot

Scoring vs. EC/PSU

Player	Games	Goals	Assists	Points	Point Streak
Allison Eder-Zdechlik	2	2	0	2	7
Marina Chapman	2	1	0	1	1
Katy Fuller	2	1	0	1	1

Goaltending vs. EC/PSU

Player	Record	Minutes	GA	Saves	Scoreless Str.
Amanda DiNella	0-2-0	109:39	7	45	--
Lindsey Hibbard	0-0-0	10:21	0	6	10:21

2015-16 Season By The Numbers

Largest Victory	3 (2x): last vs. Augsburg (11/21/15)
Largest Defeat	2 (2x) Last: vs. No. 1 Plattsburgh (11/29/15)
Largest First Period Lead	2: vs. Augsburg (11/21/15)
Largest First Period Deficit	2: at St. Thomas (11/14/15)
Largest Second Period Lead	4: vs. St. Thomas (11/13/15)
Largest Second Period Deficit	1: at St. Thomas (11/14/15)
Most Goals Scored	6: vs. St. Thomas (11/13/15)
Fewest Goals Scored	1 vs. No. 2 Elmira (11/29/15)
Most Goals Allowed	5 (2x) Last: vs. No. 1 Plattsburgh (11/29/15)
Fewest Goals Allowed	1 (2x): last vs. Augsburg (11/21/15)
Largest Lead	4: vs. St. Thomas (11/13/15)
Largest Lead On Road	1 (2x): last at Augsburg (11/20/15)
Largest Lead At Home	4: vs. St. Thomas (11/13/15)
Largest Blown Lead	2: vs. No. 1 Plattsburgh (11/29/15)
Largest Deficit	2 (2x) Last: vs. No. 1 Plattsburgh (11/29/15)
Largest Deficit On Road	2: at St. Thomas (11/14/15)
Largest Deficit At Home	None
Largest Comeback-Win/Tie	1 (2x): last at Augsburg (11/20/15)



Last Time It Happened

COMEBACKS

GAC won when trailing after two periods

December 13, 2014 vs. UW-Stevens Point. Trailing 1-0 early in the third, Gustavus scored three consecutive goals to capture a 3-1 victory.

Opponent won when trailing after two periods

Nov. 29, 2015 vs. No. 1 Plattsburgh State. Gustavus led Plattsburgh 3-1 going into third period, but Cardinals scored four goals in third period to earn 5-3 win.

Overcame 1-goal deficit and won

GAC: February 21, 2015 vs. Bethel University. Trailing 2-1 after the first, Gustavus won 5-2.

OPP: Nov. 30, 2014 vs. Middlebury. Trailing 1-0 in first period, won 3-2

Overcame 2-goal deficit and won

GAC: Feb. 29, 2013 vs. Bethel. Gusties trailed 2-0 after two, but came back with three goals in the third for a 3-2 win.

OPP: Nov. 29, 2015 vs. No. 1 Plattsburgh State. Gustavus led Plattsburgh 3-1 going into third period, but Cardinals scored four goals in third period to earn 5-3 win.

Overcame a 3-goal deficit and won

GAC: March 1, 1998 vs. University of Minnesota Club. Gusties scored one in the second and three in the third to win 4-3.

OPP: Never

OVERTIME GAMES

Won overtime game

GAC: March 1, 2012 vs. Bethel. Courtney Boucher scored 6:25 in to overtime to win 1-0 and advance to the MIAC Championship.

OPP: Nov. 30, 2014 vs. Middlebury

Tied overtime game

Nov. 3, 2015 at UW-Superior (2-2)

SERIES SWEEPS

Swept a 2-game regular season home-home series

GAC: Feb. 6 and 7, 2015 vs. St. Catherine. (4-1 Friday in St. Paul, 1-0 Saturday in St. Peter)

OPP: Jan. 31-Feb. 1, 2014 vs. Saint Benedict. (4-2 Friday night in St. Peter, 4-2 again on Saturday in St. Cloud)

Swept a 2-game regular season home series

GAC: Nov. 14-15, 2014 vs. Concordia. (3-1, 2-0)

OPP: Never

Swept a 2-game regular season away series

GAC: Nov. 15-16, 2013 at Concordia. (4-1, 2-0)

OPP: Never. (MIAC Playoffs: March 10-11, 2000 at Augsburg. (4-1, 2-1)

SHUTOUTS

Last Shutout

GAC: Feb. 7, 2015 vs. St. Catherine, 1-0

OPP: Jan. 9, 2015 vs. Adrian, 1-0

Last Home Shutout

GAC: Feb. 7, 2015 vs. St. Catherine, 1-0

OPP: Jan. 9, 2015 vs. Adrian 1-0

Last Road Shutout

GAC: Jan. 31, 2015 vs. Saint Benedict, 2-0

OPP: Mar. 8, 2014 vs. St. Thomas 2-0

Scoreless Ties (2 in program history)

Jan. 14, 2010 vs. Trinity (Conn.)

Feb. 17, 2009 at UW-Stevens Point

EXTRA ATTACKER GOALS

Scored an extra attacker goal

GAC: Nov. 30, 2014 vs. Middlebury. Lydia Wagner scored w/ 39 sec. left

OPP: Nov. 21, 2015 vs. Augsburg. Gusties won 4-1.

SHORTHANDED GOALS

Scored a shorthanded goal

GAC: Nov. 21, 2015 vs. St. Thomas. Allison Eder-Zdechlik scored shorthanded goal in first period to put Gustavus up 2-0.

OPP: Feb. 13, 2015 at St. Thomas. Tara Baago scored shorthanded in the first period of a 5-2 win for the Gusties.

Scored two shorthanded goals

GAC: Nov. 22, 2008 at St. Olaf. Melissa Mackley scored two short-handed goals in the third period. Gusties won 4-2.

OPP: Never

EMPTY NET GOALS

Scored an empty net goal

GAC: Nov. 21, 2015 vs. Augsburg. Allison Eder-Zdechlik scored EN at 18:58 in 4-1 win for the Gusties in St. Peter.

OPP: Feb. 20, 2015 vs. Bethel. Kathryn Larson scored EN at 18:40 of a 4-2 Royal win in Saint Peter.

TEAM GOALS IN A PERIOD

Team scored 5 or more goals in a period

GAC: Feb. 23, 2013 vs. Saint Benedict. The Gusties scored six goals in the second period on their way to an 8-2 victory in St. Peter.

OPP: Dec. 3, 1998 at the University of Minnesota (Mariucci Arena. Gophers scored five goals in the first period and won 8-1.

PENALTY SHOTS

Scored on a penalty shot

GAC: Never.

OPP: March 19, 2011 vs. Middlebury (NCAA 3rd Place Game, Rochester, N.Y.). Penalty shot goal scored after Lindsey Hjelm checking penalty in the second period. Middlebury won 5-0.

PENALTIES

Not penalized

GAC: Jan. 24, 2015 at Saint Mary's. Gustavus won 1-0.

OPP: Dec. 2, 2000 at St. Catherine. St. Kate's won 4-3.

Neither team was penalized

Jan. 30, 1998 at Saint Mary's. Gusties won 6-2.

HAT TRICKS

Last individual 3-goal game

GAC: Nov. 21, 2015 vs. Augsburg. Allison Eder-Zdechlik scored three goals (one even, one shorthanded, one empty net) in a 4-1 Gustavus win in St. Peter.

OPP: Feb. 20, 2015 vs. Bethel. Kathryn Larson scored three goals in 4-2 Royal win.

Last individual 4-goal game

GAC: Dec. 2, 2011 at Augsburg. Allie Schwab scored three PP goals and an even goal in a 9-0 shutout.

OPP: Never.

All goals scored by one player (3+ Goals)

GAC: Never.

OPP: Dec. 2, 2006 at Hamline. Melanie Levielle scored all three goals in a 4-3 loss.

SHOTS ON GOAL

Fewer than 15 shots in a game

GAC: Dec. 3, 1998 at the University of Minnesota, 11 shots. Minnesota won 8-1.

OPP: Feb. 20, 2015 vs. Bethel, 11 shots. Bethel won 4-2.

Fewer than 20 shots in a game

GAC: Nov. 14, 2015 at St. Thomas, 19 shots. Gustavus lost 5-3.

OPP: Nov. 29, 2015 vs. No. 2 Elmira College, 19 shots. Gustavus lost 2-1

40 or more shots in a game

GAC: Nov. 3, 2015 at UW-Superior, 40 shots. Gustavus tied 2-2.

OPP: Nov. 29, 2014 at Plattsburgh, 42 shots. Tied 4-4.

50 or more shots in a game

GAC: Feb. 16, 2013 vs. St. Olaf, 51 shots. Gustavus won 6-2.

OPP: Nov. 23, 1998 vs. the University of Minnesota: 51 shots. Minnesota won 6-0.

60 or more shots in a game

GAC: Feb. 15, 2013 at St. Olaf, 61 shots. Gustavus won 7-4.

OPP: Feb. 5, 1998 at Boston College, 65 shots. BC won 10-1.

SINGLE GAME POINTS

Player had four points in a game

GAC: Nov. 13, 2014 vs. St. Thomas. Diana Draayer scored three goals, one assist in 6-4 win over St. Thomas.

OPP: Mar. 18, 2011 vs. Norwich (NCAA Semifinals). Julie Fortier scored three goals with an assist in a 5-4 Norwich victory.

Player had five points in a game

GAC: Dec. 2, 2011 at Augsburg. Allie Schwab scored three PP goals and an even goal with an assist in a 9-0 shutout.

OPP: Mar. 18, 2005 vs. Middlebury. (NCAA Semifinals) Lorna Griffis scored two goals with three assists in a 7-3 Middlebury win.

Player had six or more points in a game

GAC: Feb. 11, 2005 at St. Catherine. Andrea Peterson scored two goals with six assists in a 13-0 win. (Most individual points in a game in program history)

OPP: Jan. 30, 1999 at Middlebury. Michelle Labbe scored three goals with three assists in a 8-0 Middlebury win.





Carroll At A Glance

Hometown

- Edina, Minnesota

Education

- Bachelor's Degree: Recreation, Parks, and Leisure Services (Minnesota State, Mankato '82)

Family

- Wife: Terri
- Children: Matt and Mike

Coaching

- 1983-84 – Assistant Coach, University of St. Thomas
- 1984-85 – Assistant Coach, Fergus Falls High School
- 1986-87 – Head Coach, Fergus Falls Community College
- 1990-99 – Head Coach, Mankato West High School
- 1999-Present – Head Coach, Gustavus Adolphus College

Years At Gustavus: 16

All-time Record: 353-86-29

All-time MIAC Record: 251-28-14

MIAC Titles: 12

MIAC Playoff Titles: 11

NCAA Tournaments: 11

NCAA Tournament Record: 8-16-0

Final Fours: 7

Most Wins In A Season: 27 (2012-13)

Fewest Wins In A Season: 14 (2002-03)

*** All-time winningest coach in Gustavus women's hockey history.

Head Coach Mike Carroll

Mike Carroll is in his 17th season as the women's head hockey coach at Gustavus. Within his tenure behind the Gustie bench, Carroll has turned Gustavus women's hockey into one of the most successful programs in NCAA Division III. He has compiled an overall record of 353-86-29 in 16 seasons and has the most coaching victories in the history of the program.

Last season, the Gustavus women's hockey team regained its spot atop of the MIAC standings, finishing first in the final conference standings with 32 points at 15-2-1. However, the Gusties suffered a 6-3 loss to Bethel University in the MIAC Playoff Semifinals, which brought their season to an end and the team finished with an overall record of 19-5-2.

Carroll has directed the Gusties to 12 MIAC regular season titles (2000-01, 2001-02, 2004-05, 2005-06, 2006-07, 2007-08, 2008-09, 2009-10, 2010-11, 2011-12, 2012-13) and has been named the MIAC Coach-of-the-Year six times (2001-02, 2003-04, 2004-05, 2005-06, 2010-11, 2012-13, 2014-15). In addition to coaching 37 players who have earned All-Conference honors 64 times, he has coached five MIAC Players-of-the-Year in Sarah Garrison, Andrea Peterson, Stefanie Ubl, Allie Schwab, Lindsey Hjelm. Carroll has also worked with 14 players who have earned All-America distinction 22 times and two American Hockey Coaches Association Players-of-the-Year, including four-time MIAC Player-of-the-Year and four-time All-American Andrea Peterson.

Prior to coming to Gustavus, Carroll served as the head boys' hockey coach at Mankato West High School from 1991 to 1999. Carroll's college coaching resume included a stint as head men's hockey coach at Fergus Falls Community College from 1986 to 1987 as well as a season as the assistant men's coach at the University of St. Thomas in 1983.

Carroll, an Edina, Minnesota native, competed in hockey and baseball at Mankato State. After graduating with a degree in municipal recreation in 1982, Carroll played professional baseball in the Montreal Expos organization for two years.

Mike and his wife, Terri, live in Mankato and have two sons, Matt and Mike.

2015-16 Roster Breakdown

Returners (13)

Courtney Bethune
Diana Draayer
Allison Eder-Zdechlik
Katy Fuller
Emily Gustafson
Lindsey Hibbard
Laura Johnson
Kaitlyn Klein
Allie Lewis
Courtney Potter
Erica Power
Emily Reibert
Rachel Skoglund

Newcomers (10)

Kalley Spreiter
Marina Chapman
Georgia Eger
Erin Moes
Madison Bergren
Allie Stanger
Laine Fischer
Brooke Pahlen
Paige Press
Amanda DiNella

By Class

Seniors (3)

Allison Eder-Zdechlik
Lindsey Hibbard
Emily Reibert

Juniors (4)

Courtney Bethune
Emily Gustafson
Allie Lewis
Courtney Potter

Sophomores (6)

Diana Draayer
Katy Fuller
Laura Johnson
Kaitlyn Klein
Erica Power
Rachel Skoglund

First-Years (10)

Madison Bergren
Marina Chapman
Amanda DiNella
Georgia Eger
Laine Fischer
Erin Moes
Brooke Pahlen
Paige Press
Kalley Spreiter

2015-16 Numerical Roster

No.	Name	Yr.	Pos.	Hgt.	Hometown/High School
1	Lindsey Hibbard	Sr.	G	5-6	Princeton, Minn./Princeton
2	Courtney Bethune	Jr.	D	5-8	Fort Frances, Ont./Warroad
3	Emily Reibert	Sr.	F	5-5	Inver Grove Heights, Minn./South St. Paul
4	Diana Draayer	So.	F	5-5	Deephaven, Minn./Minnetonka
5	Rachel Skoglund	So.	D	5-2	Forest Lake, Minn./Forest Lake
6	Emily Gustafson	Jr.	F	5-1	Esko, Minn./Esko
7	Kalley Spreiter	Fy.	F	5-5	Litchfield, Minn./Litchfield
8	Allison Eder-Zdechlik	Sr.	F	5-4	Stillwater, Minn./Stillwater
9	Erica Power	So.	F	5-6	Lakeville, Minn./Apple Valley
10	Marina Chapman	Fy.	D	5-9	South Haven, Minn./Annandale
12	Georgia Eger	Fy.	F	5-3	Stillwater, Minn./Stillwater
14	Katy Fuller	So.	F	5-5	Minneapolis, Minn./Southwest
15	Erin Moes	Fy.	D	5-5	Hastings, Minn./Hastings
16	Madison Bergren	Fy.	F	5-6	Mahtomedi, Minn./Mahtomedi
18	Allie Stanger	Fy.	F	5-11	Paynesville, Minn./Paynesville
19	Allie Lewis	Jr.	F	5-3	Kearney, Neb./Shattuck-Saint Mary's
20	Kaitlyn Klein	So.	F	5-6	Plymouth, Minn./Wayzata
21	Laine Fischer	Fy.	D	5-8	Northfield, Minn./Northfield
22	Brooke Pahlen	Fy.	F	5-6	Lakeville, Minn./Eastview
23	Laura Johnson	So.	D	5-2	Chanhassen, Minn./Chanhassen
24	Courtney Potter	Jr.	D	5-2	Dayton, Minn./Champlin Park
33	Paige Press	Fy.	G	5-3	Cottage Grove, Minn./Park
35	Amanda DiNella	Fy.	G	5-4	Oakbrook Terrace, Ill./Willowbrook

Head Coach: Mike Carroll (17th season)

Assistant Coaches: Courtney Boucher, Steve Carroll, Pat Carroll

Alphabetical Roster/Pronunciation Guide

NO.	NAME	Pronunciation
16	Bergren, Madison	
2	Bethune, Courtney	beth-0ON
10	Chapman, Marina	
35	DiNella, Amanda	
4	Draayer, Diana	DRAY-er
8	Eder-Zdechlik, Allison	ee-der-ZED-lick
12	Eger, Georgia	EGG-er
21	Fischer, Laine	
14	Fuller, Katy	
6	Gustafson, Emily	GUST-uhf-son
1	Hibbard, Lindsey	
23	Johnson, Laura	
20	Klein, Kaitlyn	Kline
19	Lewis, Allie	
15	Moes, Erin	
22	Pahlen, Brooke	PAY-len
9	Power, Erica	
24	Potter, Courtney	
35	Press, Paige	
3	Reibert, Emily	RYE-bert
5	Skoglund, Rachel	SKOHG-lund
7	Spreiter, Kalley	SPRITE-er
18	Stanger, Allie	

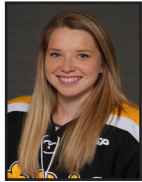
Player Profiles



#1 Lindsey Hibbard
Sr., Goaltender
Princeton, Minn./Princeton

Season Numbers

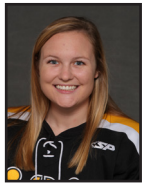
GP	GAA	Save Pct.	Record
4	2.70	.909	1-0-1



#2 Courtney Bethune
Jr., Defender
Fort Frances, Ont./Warroad

Season Numbers

GP	Goals	Assists	Points
7	0	1	1



#3 Emily Reibert
Sr., Forward
Inver Grove Heights, Minn./South St. Paul

Season Numbers

GP	Goals	Assists	Points
5	0	0	0



#4 Diana Draayer
So., Forward
Deephaven, Minn./Minnetonka

Season Numbers

GP	Goals	Assists	Points
8	4	3	7



#5 Rachel Skoglund
So., Defender
Forest Lake, Minn./Forest Lake

Season Numbers

GP	Goals	Assists	Points
7	0	0	0



#6 Emily Gustafson
Jr., Forward
Esko, Minn./Esko

Season Numbers

GP	Goals	Assists	Points
7	0	1	1



#7 Kalley Spreiter
Fy., Forward
Litchfield, Minn./Litchfield

Season Numbers

GP	Goals	Assists	Points
8	0	0	0



#8 Allison Eder-Zdechlik
Sr., Forward
Stillwater, Minn./Stillwater

Season Numbers

GP	Goals	Assists	Points
8	9	2	11

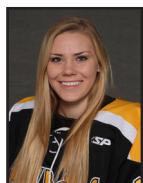


#9 Erica Power
So., Forward
Lakeville, Minn./Apple Valley

Season Numbers

GP	Goals	Assists	Points
8	2	4	6

Player Profiles



#10 Marina Chapman

Fy., Defender
South Haven, Minn./Annandale

Season Numbers

GP	Goals	Assists	Points
8	1	0	1



#12 Georgia Eger

Fy., Forward
Stillwater, Minn./Stillwater

Season Numbers

GP	Goals	Assists	Points
7	2	0	2



#14 Katy Fuller

So., Forward
Minneapolis, Minn./Southwest

Season Numbers

GP	Goals	Assists	Points
8	2	1	3



#15 Erin Moes

Fy., Defender
Hastings, Minn./Hastings

Season Numbers

GP	Goals	Assists	Points
6	0	2	2



#16 Madison Bergren

Fy., Forward
Mahtomedi, Minn./Mahtomedi

Season Numbers

GP	Goals	Assists	Points
8	0	2	2



#18 Allie Stanger

Fy., Forward
Paynesville, Minn./Paynesville

Season Numbers

GP	Goals	Assists	Points
6	0	0	0

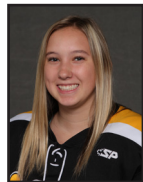


#19 Allie Lewis

Jr., Forward
Kearney, Neb./Shattuck-St. Mary's

Season Numbers

GP	Goals	Assists	Points
8	0	1	1



#20 Kaitlyn Klein

So., Forward
Plymouth, Minn./Wayzata

Season Numbers

GP	Goals	Assists	Points
8	3	3	6



#21 Laine Fischer

Fy., Defender
Northfield, Minn./Northfield

Season Numbers

GP	Goals	Assists	Points
8	1	1	2



Player Profiles



#22 Brooke Pahlen
Fr., Forward
Lakeville, Minn./Eastview

Season Numbers

GP	Goals	Assists	Points
6	0	0	0



#23 Laura Johnson
So., Defender
Chanhausen, Minn./Chanhausen

Season Numbers

GP	Goals	Assists	Points
4	1	1	2



#24 Courtney Potter
Jr., Defender
Dayton, Minn./Champlin Park

Season Numbers

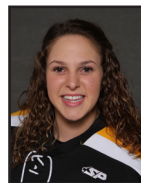
GP	Goals	Assists	Points
7	0	2	2



#33 Paige Press
Fr., Goaltender
Cottage Grove, Minn./Park

Season Numbers

GP	GAA	Save Pct.	Record
1	0.00	1.000	0-0-0



#35 Amanda DiNella
Fr., Goaltender
Oakbrook Terrace, Ill./Willowbrook

Season Numbers

GP	GAA	Save Pct.	Record
6	2.75	.895	2-3-1

**The Automated ScoreBook
Gustavus Adolphus Overall Team Statistics (as of Dec 03, 2015)
All games**

Overall: 3-3-2 Conf: 2-1-1 Home: 3-0-0 Away: 0-1-2 Neut: 0-2-0

TEAM STATISTICS	GAC	OPP
SHOT STATISTICS		
Goals-Shot attempts	25-223	22-221
Shot pct.	.112	.100
Goals/Game	3.1	2.8
Shots/Game	27.9	27.6
Assists	24	32
POWER PLAYS		
Goals-Power Plays	6-33	8-34
Conversion Percent	.182	.235
Shot Attempts	45	61
Shot Percent	.133	.131
GOAL BREAKDOWN		
Total Goals	25	22
Power Play	6	8
Short-handed	5	0
Empty net	1	0
Penalty	0	0
Unassisted	8	2
Overtime	0	0
Shootout	0	0
Delayed Penalty	0	0
PENALTIES		
Number	36	35
Minutes	75	70
Penalties/Game	4.5	4.4
Pen minutes/Game	9.4	8.8
Minor	35	35
Major	1	0
10-minute Misconduct	0	0
Game Misconduct	0	0
Gross Misconduct	0	0
Match	0	0
SHOOTOUTS (Made-Att)	0-0	0-0
ATTENDANCE		
Total	882	524
Dates/Avg Per Date	3/294	3/175
Neutral Site #/Avg	2/216	

Goals by Period	1st	2nd	3rd	OT	Total
Gustavus Adolphus	8	12	5	0	25
Opponents	7	3	12	0	22

Saves by Period	1st	2nd	3rd	OT	Total
Gustavus Adolphus	71	68	54	6	199
Opponents	58	65	69	6	198



The Automated ScoreBook

Gustavus Adolphus Category Leaders (as of Dec 03, 2015)

All games

##	Points	GP	G	A	Pts	Sh
8	A. Eder-Zdechlik	8	9	2	11	27
4	Diana Draayer	8	4	3	7	20
20	Kaitlyn Klein	8	3	3	6	21
9	Erica Power	8	2	4	6	24
14	Katy Fuller	8	2	1	3	18
12	Georgia Eger	7	2	0	2	10
21	Laine Fischer	8	1	1	2	19
23	Laura Johnson	4	1	1	2	4
16	Madison Bergren	8	0	2	2	7
15	Erin Moes	6	0	2	2	7

##	Goals	GP	G	A	Pts	Sh
8	A. Eder-Zdechlik	8	9	2	11	27
4	Diana Draayer	8	4	3	7	20
20	Kaitlyn Klein	8	3	3	6	21
9	Erica Power	8	2	4	6	24
14	Katy Fuller	8	2	1	3	18
12	Georgia Eger	7	2	0	2	10
21	Laine Fischer	8	1	1	2	19
23	Laura Johnson	4	1	1	2	4
10	Marina Chapman	8	1	0	1	14

##	Power-Play Goals	GP	PPG
8	A. Eder-Zdechlik	8	2

##	Short-Handed Goals	GP	SHG
8	A. Eder-Zdechlik	8	3
4	Diana Draayer	8	1
21	Laine Fischer	8	1

##	Game-Winning Goals	GP	GWG
4	Diana Draayer	8	2

##	Plus/Minus	GP	+/-
8	A. Eder-Zdechlik	8	+5
2	Courtney Bethune	7	+4
4	Diana Draayer	8	+4
7	Kalley Spreiter	8	+4
20	Kaitlyn Klein	8	+3
16	Madison Bergren	8	+3
9	Erica Power	8	+2
15	Erin Moes	6	+2
6	Emily Gustafson	7	+1
24	Courtney Potter	7	+1

##	Assists	GP	G	A	Pts	Sh
9	Erica Power	8	2	4	6	24
4	Diana Draayer	8	4	3	7	20
20	Kaitlyn Klein	8	3	3	6	21
8	A. Eder-Zdechlik	8	9	2	11	27
16	Madison Bergren	8	0	2	2	7
15	Erin Moes	6	0	2	2	7
24	Courtney Potter	7	0	2	2	5
14	Katy Fuller	8	2	1	3	18
21	Laine Fischer	8	1	1	2	19
23	Laura Johnson	4	1	1	2	4

##	Shots	GP	G	A	Pts	Sh	Sh%
8	A. Eder-Zdechlik	8	9	2	11	27	.333
9	Erica Power	8	2	4	6	24	.083
20	Kaitlyn Klein	8	3	3	6	21	.143
4	Diana Draayer	8	4	3	7	20	.200
21	Laine Fischer	8	1	1	2	19	.053
14	Katy Fuller	8	2	1	3	18	.111
10	Marina Chapman	8	1	0	1	14	.071
19	Allie Lewis	8	0	1	1	12	.000
12	Georgia Eger	7	2	0	2	10	.200
6	Emily Gustafson	7	0	1	1	10	.000

##	Shot Pct.	GP	G	A	Pts	Sh	Sh%
8	A. Eder-Zdechlik	8	9	2	11	27	.333
23	Laura Johnson	4	1	1	2	4	.250
4	Diana Draayer	8	4	3	7	20	.200
12	Georgia Eger	7	2	0	2	10	.200
20	Kaitlyn Klein	8	3	3	6	21	.143
14	Katy Fuller	8	2	1	3	18	.111
9	Erica Power	8	2	4	6	24	.083
10	Marina Chapman	8	1	0	1	14	.071
21	Laine Fischer	8	1	1	2	19	.053
5	Rachel Skoglund	7	0	0	0	2	.000

##	Penalties	GP	Pen	Min
14	Katy Fuller	8	5	10
10	Marina Chapman	8	5	10
12	Georgia Eger	7	4	8
19	Allie Lewis	8	3	6
4	Diana Draayer	8	3	6
24	Courtney Potter	7	3	6
16	Madison Bergren	8	2	4
15	Erin Moes	6	2	4
18	Allie Stanger	6	1	2
TM	TEAM	1	1	2

##	Penalty Minutes	GP	Pen	Min
10	Marina Chapman	8	5	10
14	Katy Fuller	8	5	10
12	Georgia Eger	7	4	8
19	Allie Lewis	8	3	6
4	Diana Draayer	8	3	6
24	Courtney Potter	7	3	6
9	Erica Power	8	1	5
16	Madison Bergren	8	2	4
15	Erin Moes	6	2	4
22	Brooke Pahlen	6	1	2

**The Automated ScoreBook
Gustavus Adolphus Combined Team Statistics (as of Dec 03, 2015)
All games**

Date	Opponent		Score	Att.
Nov 03	at UW-Superior	Tot	2-2	123
Nov 06	ST. OLAF	W	4-1	257
* Nov 13	#4 UST-WOM	W	6-4	247
* Nov 14	at UST-WOM	L	3-5	200
* 11/20/15	at Augsburg College	Tot	2-2	201
* Nov 21	AUGSBURG COLLEGE	W	4-1	378
Nov 28	vs #2 Elmira	L	1-2	212
Nov 29	vs #1 Plattsburgh	L	3-5	219

TEAM STATISTICS	GAC	OPP
SHOT STATISTICS		
Goals-Shot attempts	25-223	22-221
Shot pct.	.112	.100
Goals/Game	3.1	2.8
Shots/Game	27.9	27.6
POWER PLAYS		
Goals-Power Plays	6-33	8-34
Conversion Percent	.182	.235
Shot Attempts	45	61
Shot Percent	.133	.131
GOAL BREAKDOWN		
Power Play	6	8
Short-handed	5	0
Empty net	1	0
Penalty	0	0
Unassisted	8	2
Overtime	0	0
Shootout	0	0
Delayed Penalty	0	0
PENALTIES		
Number	36	35
Minutes	75	70
Penalties/Game	4.5	4.4
Pen minutes/Game	9.4	8.8
SHOOTOUTS (Made-Att)	0-0	0-0

Record:	Overall	Home	Away	Neutral
ALL GAMES	3-3-2	3-0-0	0-1-2	0-2-0
CONFERENCE	2-1-1	2-0-0	0-1-1	0-0-0
NON-CONFERENCE	1-2-1	1-0-0	0-0-1	0-2-0

#	Player	gp	g	a	pts	sh	sh%	pen-min	pp	sh
8	A. Eder-Zdechlik	8	9	2	11	27	.333	0-0	2	3
4	Diana Draayer	8	4	3	7	20	.200	3-6	0	1
20	Kaitlyn Klein	8	3	3	6	21	.143	1-2	1	0
9	Erica Power	8	2	4	6	24	.083	1-5	0	0
14	Katy Fuller	8	2	1	3	18	.111	5-10	0	0
12	Georgia Eger	7	2	0	2	10	.200	4-8	1	0
21	Laine Fischer	8	1	1	2	19	.053	1-2	0	1
23	Laura Johnson	4	1	1	2	4	.250	1-2	1	0
16	Madison Bergren	8	0	2	2	7	.000	2-4	0	0
15	Erin Moes	6	0	2	2	7	.000	2-4	0	0
24	Courtney Potter	7	0	2	2	5	.000	3-6	0	0
10	Marina Chapman	8	1	0	1	14	.071	5-10	1	0
2	Courtney Bethune	7	0	1	1	6	.000	0-0	0	0
6	Emily Gustafson	7	0	1	1	10	.000	0-0	0	0
19	Allie Lewis	8	0	1	1	12	.000	3-6	0	0
22	Brooke Pahlen	6	0	0	0	0	.000	1-2	0	0
3	Emily Reibert	5	0	0	0	2	.000	0-0	0	0
5	Rachel Skoglund	7	0	0	0	2	.000	1-2	0	0
7	Kalley Spreiter	8	0	0	0	8	.000	1-2	0	0
18	Allie Stanger	6	0	0	0	7	.000	1-2	0	0
TM	TEAM	1	0	0	0	0	.000	1-2	0	0
	Total	8	25	24	49	223	.112	36-75	6	5
	Opponents	8	22	32	54	221	.100	35-70	8	0

#	Goalie	gp	min	ga	gaavg	saves	save%	w-l-t
33	Paige Press	1	6:43	0	0.00	1	1.000	0-0-0
1	Lindsey Hibbard	4	155:21	7	2.70	70	.909	1-0-1
35	Amanda DiNella	6	326:50	15	2.75	128	.895	2-3-1
TM	EMPTY NET	1	1:06	0	-	0	.000	0-0-0
	Total	8	490:00	22	2.69	199	.900	3-3-2
	Opponents	8	490:00	25	3.06	198	.888	3-3-2

Attendance Summary	GAC	Opponent
Total	882	524
Dates/Avg Per Date	3/294	3/175
Neutral Site #/Avg	2/216	

Goals by Period	1st	2nd	3rd	Total
Gustavus Adolphus	8	12	5	25
Opponents	7	3	12	22

Saves by Period	1st	2nd	3rd	Total
Gustavus Adolphus	71	68	54	199
Opponents	58	65	69	198

The Automated ScoreBook
Gustavus Adolphus Game Results (as of Dec 03, 2015)
All games

Date	Opponent		Score	Shots	Overall	Conf	Time	Att.	Goalie of record
Nov 03	at UW-Superior	Tot	2-2	40/29	0-0-1	0-0-0	2:15h	123	Lindsey Hibbard
Nov 06	ST. OLAF	W	4-1	36/25	1-0-1	0-0-0	2:00	257	Amanda DiNella
* Nov 13	#4 UST-WOM	W	6-4	20/26	2-0-1	1-0-0	2:28	247	Lindsey Hibbard
* Nov 14	at UST-WOM	L	3-5	19/34	2-1-1	1-1-0	1:55	200	Amanda DiNella
* 11/20/15	at Augsburg College	Tot	2-2	31/27	2-1-2	1-1-1	2:03	201	Amanda DiNella
* Nov 21	AUGSBURG COLLEGE	W	4-1	31/22	3-1-2	2-1-1	1:51	378	Amanda DiNella
Nov 28	vs #2 Elmira	L	1-2	24/19	3-2-2	2-1-1	1:55	212	Amanda DiNella
Nov 29	vs #1 Plattsburgh	L	3-5	22/39	3-3-2	2-1-1	2:20	219	Amanda DiNella

Team Record	W-L-T	Attendance	Dates	Total	Avg.
Overall:	3-3-2	Total:	8	1837	230
Conference:	2-1-1	Home:	3	882	294
Home:	3-0-0	Away:	3	524	175
Away:	0-1-2	Neutral:	2	431	216
Neutral:	0-2-0				
Overtime:	0-0-2				