

GUSTAVUS ADOLPHUS COLLEGE

2014-15 WOMEN'S BASKETBALL

2014-15 SCHEDULE/RESULTS

DATE	OPPONENT	TIME/RESULT
11/8	CROWN COLLEGE	W 81-31
11/9	MARTIN LUTHER	W 74-58
11/22	MINNESOTA MORRIS	W 82-67
11/29	University of Dubuque#	L 76-78
11/30	College of St. Scholastica#	W 71-58
12/3	University of St. Thomas*	L 43-76
12/6	ST. CATHERINE UNIVERSITY*	W 61-50
12/13	HAMLIN UNIVERSITY*	W 70-68
12/20	University of Northwestern	W 71-62
12/30	UW-River Falls	W 65-57 OT
1/3	St. Olaf College*	W 64-62
1/7	Augsburg College*	W 83-49
1/10	Saint Mary's University*	L 67-74
1/14	CONCORDIA COLLEGE*	W 64-57
1/17	College of Saint Benedict*	W 55-52
1/21	BETHEL UNIVERSITY*	L 52-65
1/24	St. Catherine University*	W 85-78 OT
1/28	UNIVERSITY OF ST. THOMAS*	L 49-62
1/31	Hamline University*	L 79-82
2/4	Carleton College*	W 62-34
2/7	ST. OLAF COLLEGE*	1:00 p.m.
2/11	Concordia College*	5:45 p.m.
2/14	SAINT MARY'S UNIVERSITY*	1:00 p.m.
2/18	MACALESTER COLLEGE*	7:00 p.m.
2/21	COLLEGE OF SAINT BENEDICT*	1:00 p.m.

HOME GAMES in BOLD FACE CAPS; all times Central

* MIAC game

UW-Stout Thanksgiving Tournament

GUSTAVUS QUICK FACTS

Location:	St. Peter, Minnesota
Address:	800 West College Ave. St. Peter, MN 56082
Founded:	1862
Enrollment:	2,500
Nickname:	Golden Gusties
School Colors:	Black and Gold
Home Venue:	Gus Young Court
Conference:	Minnesota Intercollegiate Athletic
NCAA Affiliation:	NCAA Division III
President:	Rebecca M. Bergman
Athletic Director:	Tom Brown
Assistant Athletic Director:	Jared Phillips
Athletic Trainer:	Troy Banse
Equipment Manager:	Jed Friedrich
Sports Information Director:	Ethan Armstrong
Sports Information Graduate Assistant:	Nick Hoelmer

GUSTAVUS ADOLPHUS COLLEGE

"Golden Gusties"

14-6 Overall, 8-5 MIAC

ST. OLAF COLLEGE

"Oles"

9-11 Overall, 6-7 MIAC

GAME 21

GAME INFORMATION

DATE: Saturday, February 7

TIME: 1:00 p.m.

SITE: St. Peter, Minnesota

VENUE: Gus Young Court

WEB VIDEO: <http://portal.stretchinternet.com/gac>

LIVE STATS: <https://gustavus.edu/athletics/wbb/LIVE/xlive.htm>

SETTING THE SCENE

The Gustavus Adolphus women's basketball team returns to Gus Young Court for a Minnesota Intercollegiate Athletic Conference showdown against the Oles of St. Olaf College at 1:00 p.m. on Saturday, Feb. 7. The Gusties head into the weekend sitting in a three-way tie for third in the conference standings alongside Saint Mary's (14-6 O'all, 8-5 MIAC) and Concordia (12-8 O'all, 8-5 MIAC) at 14-6 overall and 8-5 in th MIAC. St. Olaf sits tied for seventh place alongside Augsburg (11-9 O'all, 6-7 MIAC) at 9-11 overall and 6-7 in the MIAC.

LAST TIME OUT

The Gustavus women's basketball team got back on the winning track with a 62-34 victory over Carleton on the road Wednesday night at the West Gym. The Gusties used one of their best defensive efforts of the season and benefited from a standout offensive performance by Mikayla Miller (Fy., Goodhue, Minn.) in the win over the Knights. The Gusties allowed just ten field goals and limited Carleton to 26.3-percent shooting from the field. Miller scored a season-high 31 points after going 11-for-18 from the field, 2-for-7 from three-point range, and 7-for-8 at the free throw line.

As a team, the Gusties finished the game 24-for-68 (35.3%) from the field, 3-for-19 (15.8%) from three, and 11-for-16 (68.8%) at the line. Complimenting Miller off the bench was Stephanie Klockmann (Fy., Brownston, Minn.) and Cara Christensen (So., North Mankato, Minn.) who both had eight points. Klockmann was 4-for-6, while Christensen went 4-for-12.

GUSTAVUS PROJECTED STARTERS

#	Player	Pos.	Yr.	Ht.	Hometown	PPG	RPG	FG%	3PT%	FT%	MIN.
10	Mikayla Miller	G	Fy.	5-8	Goodhue, Minn.	17.3	6.0	.379	.273	.781	33.0
32	Hannah Howard	W	So.	5-9	St. Paul, Minn.	8.4	5.2	.431	.000	.733	25.4
33	Lindsey Johnson	F	Jr.	6-0	Edina, Minn.	10.0	4.5	.507	.500	.879	25.5
34	Maddie Ehrich	G	Sr.	5-9	Eden Prairie, Minn.	8.1	3.2	.455	.167	.735	26.9
43	Miranda Rice	F	Fy.	5-11	Forest Lake, Minn.	7.7	4.6	.472	.000	.673	23.5

ST. OLAF PROJECTED STARTERS

#	Player	Pos.	Yr.	Ht.	Hometown	PPG	RPG	FG%	3PT%	FT%	MIN.
01	Woo Bandel	G	Jr.	5-5	Westminster, Colo.	5.1	3.9	.340	.267	.568	29.1
11	Lauren Gutierrez	G	Jr.	5-4	Littleton, Colo.	5.0	2.7	.330	.348	.588	26.2
23	Afton Wolter	G	Jr.	5-8	Norwood, Minn.	9.0	3.1	.326	.316	.667	27.2
33	Betsey Daly	F	So.	5-9	Rochester, Minn.	10.9	8.2	.453	.472	.649	27.9
55	Nikki Frogner	C	Sr.	6-2	Scandia, Minn.	9.0	4.7	.330	.176	.438	19.2



TWITTER
[@GustieAthletics](https://twitter.com/GustieAthletics)



FACEBOOK
facebook.com/GustieAthletics



GAME CENTRAL
client.stretchinternet.com/client/gac.portal



YOUTUBE
youtube.com/gustavusathletics



INSTAGRAM
instagram.com/gustieathletics



FLICKR
flickr.com/photos/googusties



2014-15 GUSTAVUS ADOLPHUS WOMEN'S BASKETBALL GAME NOTES

GUSTAVUS VS. ST. OLAF | SATURDAY, FEBRUARY 7

STATISTICAL COMPARISON

GUSTAVUS	vs.	ST. OLAF
14-6	Overall Record	9-11
8-5	Conference Record	6-7
67.7	Points Per Game	53.5
+6.7	Scoring Margin	-4.9
.428	Field Goal Percentage	.336
.322	3-PT Field Goal Percentage	.303
.752	Free Throw Percentage	.576
754	Rebounds	779
37.7	Rebounds Per Game	39.0
+6.2	Rebounding Margin	-0.2
277	Assists	227
13.9	Assists Per Game	11.4
0.8	Assist/Turnover Ratio	0.6
18.1	Turnovers Per Game	17.7
+1.6	Turnover Margin	-0.6

GUSTAVUS'S RECORD WHEN...

At home...	6-2
On the road...	7-3
A neutral site...	1-1
In MIAC games...	8-5
In non-conference games...	6-1
When leading after first half...	9-0
When tied after first half...	1-0
When trailing after first half...	3-6
In overtime...	2-0
GAC has more rebounds...	10-4
Opponent has more rebounds...	3-2
Rebounds equal...	0-0
GAC has more assists...	8-2
Opponent has more assists...	5-4
Assists equal...	0-0
GAC commits more fouls...	8-5
Opponent commits more fouls...	5-1
Fouls equal...	0-0
GAC commits more turnovers...	2-5
Opponent commits more turnovers...	10-0
Turnovers equal...	1-1
GAC scores first...	9-2
Opponent scores first...	4-4
Games decided by three or less...	3-2
Games decided by single figures...	7-3
Games decided by double figures...	6-3
In November...	3-1
In December...	4-1
In January...	5-4
In February...	0-0
Following a win...	8-4
Following a loss...	5-1

THE SERIES

Saturday's game will be the 72nd meeting between Gustavus and St. Olaf in women's basketball. The Gusties hold the advantage in the all-time series with a record of 47-24. Although the Gusties and Oles have split the last three seasons, the Gusties have a chance for a sweep for the first time since the 2012-13 campaign.

The two squads kicked off January against one another back on Jan. 3 in the Skoglund Center. Despite trailing by 10 points with less than 13 minutes remaining in the game, Gustavus rallied late to defeat St. Olaf 64-62. Down 48-38 with 12:33 left in the second half, the Gusties went on an 11-0 scoring run to take a 49-48 lead by the 9:40 mark. The two teams traded leads from that point on until the score was knotted at 61-61 with 1:36 on the clock. After Mikayla Miller hit a free throw to put the Gusties back up two (64-62) with :15 seconds left, St. Olaf's Nikki Frogner failed to convert on two free throw chances with :02 seconds on the clock, which sealed the win for Gustavus.

Kelsey Carpenter (So., St. Peter, Minn.) led Gustavus off the bench 15 points after going 5-for-9 from the field with all five field goals coming from behind the arch. Ole Betsey Daly was the game's leading scorer with 17 points on 5-of-8 shooting from the field.

SCOUTING THE OLES

The St. Olaf women's basketball team heads into Saturday's game looking to build on the momentum of a 58-53 victory over Saint Benedict on the road Wednesday night in St. Joseph. After Saint Ben's Mattie Lueck sent the game to overtime tied 52-52 on a free throw with less than :04 seconds on the clock, St. Olaf outscored the Blazers 6-1 in overtime - taking advantage of an 0-for-8 Saint Ben's shooting performance in the extra session.

Fresh off a double-double against Saint Ben's, Betsey Daly enters the weekend St. Olaf's top scorer and rebounder. Within conference play, Daly is averaging near a double-double at 12.1 points and 8.9 rebounds per game. She is shooting .453 from the floor and has posted a double-double in five of the last seven games. Daly's rebounding average ranks third in the league while her 40 offensive boards against league foes rank seventh.

Inside MIAC play, St. Olaf sits near the bottom of the league in several offensive categories including points per game (.540/10th), field goals percentage (.342/11th), and free throw percentage (.594/12th). Despite their offensive struggles, the Oles have consistently been one of the top defensive teams in the league. They are allowing 57.5 points per game (4th) and limiting league opponents to just 35.8-percent shooting from the field (3rd).

NEWS AND NOTES

Miller Back On Track - After a six game stretch during which she averaged 11.3 points per game and shot just 26.3-percent from the field, rookie guard Mikayla Miller broke out of her slump with the best offensive performance of the season on Wednesday night at Carleton. With 31 points against the Knights, Miller reached the 30-point mark for the second time this season. Her performance ranks fifth in Gustavus women's basketball history alongside 31-point efforts by Jeri Ree, Linn Erickson, and Bri Monohan. Erickson scored 31 points three times while Monahan reached 31 twice. Miller is the first Gustie to score 30 or more points in a single game more than once in a season since Monahan did so three times during the 2005-06 campaign.

So Long January, Hello February - Gustavus waved goodbye to its most grueling month of the season with a loss to Hamline on Jan. 31 and began a new month with a win over Carleton on Feb. 4. The Gusties went 5-4 in January, which included a 4-2 record on the road. During the month, Gustavus averaged 66.4 points per game and shot 42.1-percent from the field. With February now upon us, the playoff push intensifies with just five games remaining in the regular season. The Gusties will cap their schedule with four of their last five contests at home on Gus Young Court where they are 6-2 and are shooting 41.9-percent from the field.

MIAC STANDINGS/SCHEDULE

SCHOOL	MIAC	OVERALL	AROUND THE LEAGUE
St. Thomas ^	13-0	20-0	Saturday, February 7
Bethel	10-3	16-4	St. Olaf at Gustavus 1:00 p.m.
Gustavus	8-5	14-6	Hamline at Macalester 1:00 p.m.
Saint Mary's	8-5	14-6	Concordia at Saint Mary's 1:00 p.m.
Concordia	8-5	12-8	Carleton at St. Thomas 1:00 p.m.
Saint Benedict	7-6	10-10	Saint Benedict at Bethel 1:00 p.m.
Augsburg	6-7	11-9	St. Catherine at Augsburg 1:00 p.m.
St. Olaf	6-7	9-11	
Hamline	5-8	10-10	
Carleton	5-8	7-13	
St. Catherine	2-11	7-13	
Macalester	0-13	3-17	



2014-15 GUSTAVUS ADOLPHUS WOMEN'S BASKETBALL GAME NOTES

GUSTAVUS VS. ST. OLAF | SATURDAY, FEBRUARY 7

2014-15 GUSTAVUS WOMEN'S BASKETBALL TEAM



2014-15 GUSTAVUS WOMEN'S BASKETBALL NUMERICAL ROSTER

No.	Name	Year	Position	Height	Hometown	High School
3	Emee Udo	First-year	Guard	5-9	Apple Valley, Minn.	Eastview
5	Kelsey Carpenter	Sophomore	Guard	5-8	St. Peter, Minn.	St. Peter
10	Mikayla Miller	First-year	Guard	5-8	Goodhue, Minn.	Goodhue
11	Emily FitzSimmons*	Senior	Guard	5-7	Good Thunder, Minn.	Maple River
12	Anne Odegard	Sophomore	Guard	5-9	St. Paul, Minn.	Cretin-Derham Hall
14	Kate Thiesse	First-year	Forward	5-10	Welcome, Minn.	Martin County West
15	Siri Sviggum	First-year	Guard	5-7	Dennison, Minn.	Kenyon-Wanamingo
20	Hannah Silva-Breen	First-year	Forward	5-10	Prior Lake, Minn.	Prior Lake
21	Morgan Iverson	Sophomore	Forward	5-9	Waconia, Minn.	Waconia
22	Julie Sohre	Junior	Forward	5-10	Good Thunder, Minn.	Maple River
23	Heather Hohenstein	Junior	Guard	5-5	Garden City, Minn.	Lake Crystal Wellcome Memorial
24	Taylor Ebnet	Sophomore	Guard	5-7	Lake Lillian, Minn.	BOLD
30	Kelle Nett	Junior	Forward	5-10	Spring Valley, Ill.	Hall
32	Hannah Howard	Sophomore	Guard	5-9	St. Paul, Minn.	Cretin-Derham Hall
33	Lindsey Johnson*	Junior	Forward	6-0	Edina, Minn.	Edina
34	Maddie Ehrich	Senior	Guard	5-9	Eden Prairie, Minn.	Lion's Gate Christian Academy
40	Anna Lundquist	Junior	Post	5-11	Rochester, Minn.	Mayo
42	Emmaline Crawford	Sophomore	Post	6-0	Mankato, Minn.	East
43	Miranda Rice	First-year	Forward	5-11	Forest Lake, Minn.	Forest Lake
44	Stephanie Klockmann	First-year	Post	5-10	Brownston, Minn.	Glencoe-Silver Lake
50	Cara Christiansen	Sophomore	Forward	5-10	North Mankato, Minn.	West

Head Coach: Laurie Kelly (Third Season)

Assistant Coaches: Dan Wolfe, Angie Potts, Nate Otto



HEAD COACH LAURIE KELLY

Third Season
41-30 at Gustavus
264-219 Overall
Office: 507-933-6145
Email: lkelly@gustavus.edu

Laurie Kelly is in her third season as the head coach of the Gustavus women's basketball team. Kelly, a 1993 graduate of the University of St. Thomas with a degree in speech communications, came to Gustavus from Northern Arizona University in Flagstaff, where she directed the Division I Lumberjacks for nine seasons.

Thanks to a late surge during which the 2013-14 Gustavus women's basketball team won seven of eight games from late-January to mid-February, the Gusties were able finish sixth in the conference standings with a record of 11-11 and earn a trip to the MIAC Playoffs for an MIAC-best 14th consecutive season. Gustavus finished the year with a record of 14-12 overall after falling on the road to No. 3-seeded St. Thomas 66-51 in the quarterfinals of the MIAC Playoffs.

Senior guard Julia Dysthe (White Bear Lake, Minn.) and sophomore post Karina Schroeder (Lake Crystal, Minn.) were both honored as members of the All-Conference Team following the season. Dysthe, a first time all-conference performer, scored a career-high 382 points (13.7 ppg) and shot 42.1-percent from the field. Schroeder, a member of the MIAC All-Rookie Team last season, established herself as one of the top post players in the league after averaging 14.2 points per game, shooting 53.3-percent from the field, and bringing down an average of 8.9 rebounds per game. She led the team in all three categories and finished with the second-best field goal shooting percentage in the league at 51.6-percent against league opponents.

A Rochester, Minnesota, native, Kelly made a quick ascent through the Division II and I coaching ranks after record setting Division III playing career at the University of St. Thomas in the early '90s. In the past nine years at Northern Arizona, she has compiled the most wins in the program's history (117), while also directing the team to its first-ever Big Sky Conference tournament title and NCAA tournament bid in the 2005-06 season. During Kelly's tenure, the Lumberjacks advanced to the Big Sky tournament six times with two appearances in the championship game (2006, 2007), and her teams have registered two of the three 20-win seasons in the program's history.

In addition to quality on the floor, her squads have also been strong in the classroom, with four players earning CoSIDA Academic All-District honors including one Academic All-American. The Lumberjacks were recognized in the Women's Basketball Coaches Association Top 25 Academic Honor Roll six times, with two Top Ten national rankings.

Following the 2012-13 season, the Gustavus women's basketball team achieved a significant milestone when the Women's Basketball Coaches Association (WBCA) announced its Academic Top 25 Team Honor Roll following the year. Making their 15th appearance on the NCAA Division III honor roll, the Gusties were recognized as the team with the top cumulative grade point average in country at a 3.600 – a first in the program's history.

Prior to her position at Northern Arizona, Kelly coached at Binghamton University in New York and built the Bearcats into one of the top Division II programs in the country before helping the institution transition to a Division I program in 2001-02. In that first year of Division I competition, Kelly directed the team to a 19-9 record and a second-place finish in the America East Conference. During her five years at Binghamton, Kelly compiled a record of 94-22, including a mark of 75-13 in the program's final three years at the Division II level, and her squads won New England Collegiate Conference (NECC) titles in 1999 and 2000 and Eastern Collegiate Athletic Conference (ECAC) titles in 2000 and 2001. She was named ECAC Coach of the Year in 2000 and New York State Coach of the Year in 2002. Kelly started her collegiate coaching career as the graduate assistant coach at Minnesota State University, Mankato from 1996 to 1998. While she was at Minnesota State, Mankato she earned a master's degree in physical education with an emphasis in sports administration.

Before her success in the coaching ranks, Laurie Trow Kelly was a standout player at the University of St. Thomas from 1989 to 1993 and is recognized by many as one of the greatest players in NCAA Division III history. A gifted athlete, the 6-1 Kelly scored 2,607 points and pulled down 1,204 rebounds in four years, earning Kodak All-America honors three consecutive seasons. In her senior season (1992-93), Kelly was voted National Player of the Year by the Women's Basketball Coaches Association after averaging more than 26 points per game. She set 22 conference and 24 school records, was conference MVP three times and was also named Midwest Sports Channel NCAA Division III Women's Athlete of the Year. In January of 2006, Kelly was one of five players selected to the NCAA Division III 25th Anniversary Team.

Laurie Kelly is the ninth head coach in the history of the Gustavus women's basketball program. Heading into the 2014-15 season, the Gusties have compiled an all-time record of 632-434 (.593), winning two Minnesota Intercollegiate Athletic Conference championships and making five NCAA tournament appearances.

In addition to her coaching duties, Kelly serves as the coordinator of the Gustavus Health Promotion program (GHP). The Gustavus Health Promotion program offers employees at Gustavus a variety of educational opportunities, assessment tools, and physical activity experiences so that they can achieve and maintain a healthy lifestyle.

Kelly lives in St. Peter with and her husband, Matt, and their two daughters, Morgan and Madison.





2014-15 TV/RADIO ROSTER



**EMME
EDO**
Guard - First-year
Apple Valley, Minn.



**KELSEY
CARPENTER**
Guard - First-year
St. Peter, Minn.



**MIKAYLA
MILLER**
Guard - First-year
Goodue, Minn.



**EMILY
FITZSIMMONS**
Guard - Senior
Good Thunder, Minn.



**ANNE
ODEGARD**
Guard - Sophomore
St. Paul, Minn.



**KATE
THIESSE**
Forward - First-year
Welcome, Minn.



**SIRI
SVIGGUM**
Guard - First-year
Dennison, Minn.



**HANNAH
SILVA-BREEN**
Forward - First-year
Prior Lake, Minn.



**MORGAN
IVERSON**
Forward - Sophomore
Waconia, Minn.



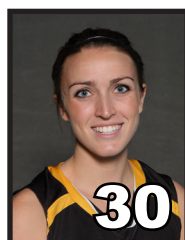
**JULIE
SOHRE**
Forward - Junior
Good Thunder, Minn.



**HEATHER
HOHENSTEIN**
Guard - Junior
Garden City, Minn.



**TAYLOR
EBNET**
Guard - Sophomore
Lake Lillian, Minn.



**KELLE
NETT**
Forward - Junior
Spring Valley, Ill.



**HANNAH
HOWARD**
Guard - Sophomore
St. Paul, Minn.



**LINDSEY
JOHNSON**
Forward - Junior
Edina, Minn.



**MADDIE
EHRICH**
Guard - Senior
Eden Prairie, Minn.



**ANNA
LUNDQUIST**
Post - Junior
Rochester, Minn.



**EMMALINE
CRAWFORD**
Post - Sophomore
Mankato, Minn.



**MIRANDA
RICE**
Forward - First-year
Forest Lake, Minn.



**STEPHANIE
KLOCKMANN**
Post - First-year
Browntown, Minn.



**CARA
CHRISTIENSEN**
Post - Sophomore
North Mankato, Minn.



**LAURIE
KELLY**
Head Coach



**DAN
WOLFE**
Assistant Coach



2014-15 GUSTAVUS ADOLPHUS WOMEN'S BASKETBALL GAME NOTES

GUSTAVUS VS. ST. OLAF | SATURDAY, FEBRUARY 7

2014-15 COMBINED SEASON STATISTICS

RECORD:	OVERALL	HOME	AWAY	NEUTRAL
ALL GAMES	14-6	6-2	7-3	1-1
CONFERENCE	8-5	3-2	5-3	0-0
NON-CONFERENCE	6-1	3-0	2-0	1-1

#	Player	gp-gs	min		Total		3-Point		F-Throw		Rebounds				pf		dq		a		to		blk		stl		pts		avg	
					fg-fga	pct	3fg-fga	pct	ft-fga	pct	off	def	tot	avg																
10	Mikayla Miller	20-20	659	33.0	116-306	.379	24-88	.273	89-114	.781	29	90	119	6.0	50	1	72	80	1	59	345	17.3								
33	Lindsey Johnson	20-19	510	25.5	76-150	.507	19-38	.500	29-33	.879	14	76	90	4.5	51	1	47	38	3	16	200	10.0								
32	Hannah Howard	20-19	507	25.4	56-130	.431	0-3	.000	55-75	.733	49	55	104	5.2	59	2	28	41	8	36	167	8.4								
34	Maddie Ehrich	20-18	538	26.9	55-121	.455	1-6	.167	50-68	.735	17	47	64	3.2	52	1	40	36	4	19	161	8.1								
43	Miranda Rice	20-19	469	23.5	60-127	.472	0-1	.000	33-49	.673	35	56	91	4.6	51	0	25	41	5	25	153	7.7								
05	Kelsey Carpenter	19-2	415	21.8	39-105	.371	21-59	.356	15-21	.714	5	23	28	1.5	32	0	17	28	1	9	114	6.0								
50	Cara Christiansen	11-1	107	9.7	12-28	.429	1-1	1.000	9-10	.900	7	7	14	1.3	11	0	4	8	0	6	34	3.1								
12	Anne Odegard	3-0	11	3.7	3-6	.500	0-3	.000	3-3	1.000	0	0	0	0.0	1	0	0	2	0	0	9	3.0								
44	Stephanie Klockmann	17-1	194	11.4	22-40	.550	0-1	.000	7-12	.583	23	22	45	2.6	31	0	13	10	4	9	51	3.0								
15	Siri Sviggum	20-1	250	12.5	14-32	.438	5-20	.250	13-18	.722	15	19	34	1.7	12	0	11	10	1	7	46	2.3								
42	Emmaline Crawford	10-0	76	7.6	6-16	.375	0-0	.000	8-13	.615	6	12	18	1.8	12	1	2	6	4	3	20	2.0								
40	Anna Lundquist	10-0	57	5.7	4-15	.267	0-0	.000	11-13	.846	8	13	21	2.1	9	0	1	5	1	2	19	1.9								
24	Taylor Ebnet	3-0	7	2.3	1-2	.500	0-0	.000	2-2	1.000	3	1	4	1.3	1	0	1	3	0	0	4	1.3								
22	Julie Sohre	4-0	19	4.8	2-2	1.000	0-0	.000	1-2	.500	0	4	4	1.0	2	0	1	2	0	1	5	1.3								
21	Morgan Iverson	8-0	69	8.6	2-9	.222	1-4	.250	2-2	1.000	1	4	5	0.6	6	0	2	7	2	0	7	0.9								
03	Emee Udo	14-0	81	5.8	5-12	.417	0-0	.000	2-3	.667	4	11	15	1.1	5	0	4	6	1	3	12	0.9								
11	Emily FitzSimmons	4-0	18	4.5	1-3	.333	1-2	.500	0-0	.000	0	3	3	0.8	2	0	1	3	0	1	3	0.8								
30	Kelle Nett	5-0	11	2.2	0-0	.000	0-0	.000	2-2	1.000	1	2	3	0.6	0	0	2	0	0	0	2	0.4								
23	Heather Hohenstein	8-0	49	6.1	1-5	.200	0-1	.000	0-0	.000	0	2	2	0.3	5	0	6	7	0	1	2	0.3								
20	Hannah Silva-Breen	1-0	2	2.0	0-0	.000	0-0	.000	0-0	.000	0	0	0	0.0	0	0	0	0	0	0	0	0.0								
Total.....		20	4049		475-1109	.428	73-227	.322	331-440	.752	260	494	754	37.7	392	6	277	361	35	197	1354	67.7								
Opponents.....		20	4054		412-1018	.405	123-340	.362	273-429	.636	200	431	631	31.6	367	-	229	393	62	167	1220	61.0								

TEAM STATISTICS	GAC	OPP
SCORING	1354	1220
Points per game	67.7	61.0
Scoring margin	+6.7	-
FIELD GOALS-ATT	475-1109	412-1018
Field goal pct	.428	.405
3 POINT FG-ATT	73-227	123-340
3-point FG pct	.322	.362
3-pt FG made per game	3.7	6.2
FREE THROWS-ATT	331-440	273-429
Free throw pct	.752	.636
F-Throws made per game	16.6	13.7
REBOUNDS	754	631
Rebounds per game	37.7	31.6
Rebounding margin	+6.2	-
ASSISTS	277	229
Assists per game	13.9	11.5
TURNOVERS	361	393
Turnovers per game	18.1	19.7
Turnover margin	+1.6	-
Assist/turnover ratio	0.8	0.6
STEALS	197	167
Steals per game	9.9	8.4
BLOCKS	35	62
Blocks per game	1.8	3.1
ATTENDANCE	1565	2116
Home games-Avg/Game	8-196	10-169
Neutral site-Avg/Game	-	2-215

Date	Opponent	Score	Att.
11-15-14	CROWN COLLEGE	w 31-81	182
11-16-14	MARTIN LUTHER	w 58-74	72
11-22-14	MINNESOTA MORRIS	w 67-82	220
11/29/14	vs Dubuque	L 76-78	347
11/30/14	vs St. Scholastica	w 58-71	83
* 12/3/14	at St. Thomas	L 43-76	200
* 12/6/14	ST. CATHERINE	w 50-61	213
* 12/13/14	HAMLIN UNIVERSITY	w 68-70	84
12/20/14	at Northwestern (Minn.)	w 71-62	347
12/30/14	at UW-River Falls	wot 65-57	204
* 1/3/2015	at St. Olaf	w 64-62	0
* 01/07/15	at Augsburg College	w 83-49	101
* 1/10/15	at Saint Mary's	L 67-74	230
* 1/14/15	CONCORDIA COLLEGE	w 57-64	318
* 01/17/15	at Saint Benedict	w 55-52	208
* 1/21/15	BU	L 65-52	264
* 01/24/15	at St. Catherine University	wot 85-78	185
* 1/28/15	ST. THOMAS	L 62-49	212
* 1/31/15	at Hamline University	L 79-82	0
* 02/04/15	at Carleton College	w 62-34	211

* - Conference game



2014-15 GUSTAVUS ADOLPHUS WOMEN'S BASKETBALL GAME NOTES

GUSTAVUS VS. ST. OLAF | SATURDAY, FEBRUARY 7

2014-15 GAME-BY-GAME STATISTICAL COMPARISON

Opponent	1st	2nd	Score	Mar	Total FG	FG Pct	3-Pointers	3FG Pct	Free Throws	FT Pct	Rebounds	Assist	T/Over	Block	Steal	Fouls
CROWN COLLEGE	43/17	38/14	81-31	+50	26-60/10-44	.433/.227	8-20/2-9	.400/.222	21-28/9-20	.750/.450	44/34 +10	15/5	21/34	2/0	14/10	26/20
MARTIN LUTHER	38/24	36/34	74-58	+16	28-63/19-53	.444/.358	0-4/4-13	.000/.308	18-20/16-24	.900/.667	43/31 +12	17/9	21/24	2/3	14/11	20/18
MINNESOTA MORRIS	42/28	40/39	82-67	+15	28-53/22-53	.528/.415	5-11/9-18	.455/.500	21-25/14-23	.840/.609	38/28 +10	18/11	17/20	1/2	12/2	21/18
Dubuque	34/36	42/42	76-78	(2)	28-53/25-55	.528/.455	6-14/10-18	.429/.556	14-23/18-26	.609/.692	36/26 +10	19/13	22/14	1/0	8/11	24/17
St. Scholastica	31/21	40/37	71-58	+13	25-52/20-56	.481/.357	5-14/5-16	.357/.313	16-20/13-15	.800/.867	42/24 +18	12/7	20/15	2/1	8/9	16/14
St. Thomas	27/39	16/37	43-76	(33)	14-40/27-51	.350/.529	4-10/7-19	.400/.368	11-14/15-19	.786/.789	24/31 (7)	12/17	24/15	1/7	7/11	20/19
ST. CATHERINE	32/27	29/23	61-50	+11	20-44/16-55	.455/.291	3-14/4-17	.214/.235	18-24/14-22	.750/.636	42/31 +11	11/9	20/12	0/2	9/12	17/22
HAMLIN UNIVERSITY	41/23	29/45	70-68	+2	24-58/29-55	.414/.527	4-12/9-23	.333/.391	18-23/1-6	.783/.167	31/37 (6)	10/13	12/22	0/4	10/2	13/19
Northwestern (Minn.)	30/32	41/30	71-62	+9	22-66/25-56	.333/.446	5-10/6-26	.500/.231	22-29/6-13	.759/.462	39/44 (5)	10/12	14/26	0/5	13/6	15/24
UW-River Falls	28/33	23/18	65-57	+8	24-48/21-53	.500/.396	3-6/4-13	.500/.308	14-25/11-27	.560/.407	29/42 (13)	9/13	23/30	2/0	18/16	24/19
St. Olaf	26/34	38/28	64-62	+2	20-54/21-50	.370/.420	6-20/9-22	.300/.409	18-25/11-19	.720/.579	38/34 +4	10/14	13/17	2/0	8/6	17/21
Augsburg College	43/20	40/29	83-49	+34	34-61/18-52	.557/.346	1-7/3-19	.143/.158	14-21/10-14	.667/.714	44/24 +20	26/13	17/21	1/6	13/13	18/17
Saint Mary's	33/40	34/34	67-74	(7)	26-64/26-50	.406/.520	1-11/7-15	.091/.467	14-16/15-31	.875/.484	43/30 +13	12/17	18/15	1/1	6/6	27/14
CONCORDIA COLLEGE	33/29	31/28	64-57	+7	23-55/16-43	.418/.372	1-6/7-19	.167/.368	17-18/18-23	.944/.783	38/26 +12	10/11	18/19	3/3	10/7	21/19
Saint Benedict	26/26	29/26	55-52	+3	20-52/18-55	.385/.327	3-5/6-16	.600/.375	12-16/10-18	.750/.556	39/34 +5	15/13	17/14	3/6	4/8	17/14
BU	22/29	30/36	52-65	(13)	19-60/19-46	.317/.413	3-10/4-8	.300/.500	11-14/23-37	.786/.622	41/36 +5	12/7	19/14	4/11	6/8	24/14
St. Catherine University	35/24	33/44	85-78	+7	31-63/25-59	.492/.424	3-11/9-22	.273/.409	20-28/19-21	.714/.905	43/29 +14	22/14	18/18	3/4	5/9	19/24
ST. THOMAS	23/36	26/26	49-62	(13)	13-38/20-45	.342/.444	3-8/6-17	.375/.353	20-27/16-20	.741/.800	21/31 (10)	8/12	18/18	1/3	8/7	17/23
Hamline University	36/49	43/33	79-82	(3)	26-57/25-49	.456/.510	6-15/10-18	.400/.556	21-28/22-36	.750/.611	39/25 +14	16/13	22/17	2/1	9/9	25/18
Carleton College	38/20	24/14	62-34	+28	24-68/10-38	.353/.263	3-19/2-12	.158/.167	11-16/12-15	.688/.800	40/34 +6	13/6	7/28	4/3	15/4	11/13

Note: Game totals are displayed in the format TEAM/OPPONENT for each category