

GUSTAVUS ADOLPHUS COLLEGE

2014-15 WOMEN'S BASKETBALL

2014-15 SCHEDULE/RESULTS

DATE	OPPONENT	TIME/RESULT
11/8	CROWN COLLEGE	W 81-31
11/9	MARTIN LUTHER	W 74-58
11/22	MINNESOTA MORRIS	W 82-67
11/29	University of Dubuque#	L 76-78
11/30	College of St. Scholastica#	W 71-58
12/3	University of St. Thomas*	L 43-76
12/6	ST. CATHERINE UNIVERSITY*	W 61-50
12/13	HAMLIN UNIVERSITY*	W 70-68
12/20	University of Northwestern	W 71-62
12/30	UW-River Falls	W 65-57 OT
1/3	St. Olaf College*	W 64-62
1/7	Augsburg College*	W 83-49
1/10	Saint Mary's University*	L 67-74
1/14	CONCORDIA COLLEGE*	W 64-57
1/17	College of Saint Benedict*	W 55-52
1/21	BETHEL UNIVERSITY*	L 52-65
1/24	St. Catherine University*	W 85-78 OT
1/28	UNIVERSITY OF ST. THOMAS*	L 49-62
1/31	Hamline University*	L 79-82
2/4	Carleton College*	W 62-34
2/7	ST. OLAF COLLEGE*	W 66-58
2/11	Concordia College*	5:45 p.m.
2/14	SAINT MARY'S UNIVERSITY*	W 75-47
2/18	MACALESTER COLLEGE*	W 70-61
2/21	COLLEGE OF SAINT BENEDICT*	L 47-50
2/24	Saint Mary's University&	7:00 p.m.

HOME GAMES in BOLD FACE CAPS; all times Central

** MIAC game*

UW-Stout Thanksgiving Tournament

& MIAC Playoffs

GUSTAVUS QUICK FACTS

Location:	St. Peter, Minnesota
Address:	800 West College Ave. St. Peter, MN 56082
Founded:	1862
Enrollment:	2,500
Nickname:	Golden Gusties
School Colors:	Black and Gold
Home Venue:	Gus Young Court
Conference:	Minnesota Intercollegiate Athletic
NCAA Affiliation:	NCAA Division III
President:	Rebecca M. Bergman
Athletic Director:	Tom Brown
Assistant Athletic Director:	Jared Phillips
Athletic Trainer:	Troy Banse
Equipment Manager:	Jed Friedrich
Sports Information Director:	Ethan Armstrong
Sports Information Graduate Assistant:	Nick Hoelmer

GUSTAVUS ADOLPHUS COLLEGE

"Golden Gusties"

17-8 Overall, 11-7 MIAC

SAINT MARY'S UNIVERSITY

"Cardinals"

17-8 Overall, 11-7 MIAC

GAME 26

GAME INFORMATION

DATE: Tuesday, February 24

TIME: 7:00 p.m.

SITE: Winona, Minnesota

VENUE: SMU Gym

WEB VIDEO: <http://portal.stretchinternet.com/smu>

LIVE STATS: <http://portal.stretchinternet.com/smu>

SETTING THE SCENE

The Gustavus Adolphus women's basketball team will travel to Winona, Minnesota on Tuesday, Feb. 24 for a Minnesota Intercollegiate Athletic Conference Playoff matchup against the Cardinals of Saint Mary's University. The quarterfinal game is set for 7:00 p.m. at the SMU Gym. The Gusties earned the No. 5 seed in the MIAC Playoffs after going 17-8 overall and 11-7 in the MIAC. Saint Mary's earned the No. 4 seed thanks to a tiebreaker over Gustavus after compiling an identical record of 17-8 overall and 11-7 in the MIAC.

TICKET INFORMATION

For Tuesday's quarterfinal women's basketball game, the rate is \$7 for adult and \$3 for any student (5 years old and younger are free). There is no senior discount. MIAC passes will be honored. No other passes are to be accepted.

MIAC PLAYOFF HISTORY

Since the initiation of the six-team MIAC Tournament in the 2000-01 season, the Gustavus women's basketball team has qualified for the conference playoffs every year. The Gusties are making their 15th consecutive appearance in the MIAC Playoffs this season, holding a record of 8-14 all-time in that time. No team in the MIAC has earned a trip to the league playoffs in every year except for the Gusties. Gustavus has had its share of struggles on the road in the playoffs, heading into Tuesday night's game with an 0-12 record away from Gus Young Court.

GUSTAVUS PROJECTED STARTERS

#	Player	Pos.	Yr.	Ht.	Hometown	PPG	RPG	FG%	3PT%	FT%	MIN.
5	Kelsey Carpenter	G	So.	5-8	St. Peter, Minn.	5.6	1.5	.362	.366	.727	21.3
10	Mikayla Miller	G	Fy.	5-8	Goodhue, Minn.	17.2	5.2	.389	.316	.786	32.4
32	Hannah Howard	W	So.	5-9	St. Paul, Minn.	8.1	5.5	.452	.000	.735	25.3
33	Lindsey Johnson	F	Jr.	6-0	Edina, Minn.	10.3	4.2	.471	.421	.854	25.1
44	Stephanie Klockmann	P	Fy.	5-10	Brownston, Minn.	4.0	3.1	.609	.000	.435	13.5

SAINT MARY'S PROJECTED STARTERS

#	Player	Pos.	Yr.	Ht.	Hometown	PPG	RPG	FG%	3PT%	FT%	MIN.
3	Emma Schaefer	G	So.	5-6	Roseville, Minn.	9.2	4.2	.414	.367	.657	28.3
14	Sara Schoenthaler	G	Sr.	5-10	White Bear Lake, Minn.	5.5	3.4	.350	.287	.577	28.8
21	Octavia Brown	G	Sr.	5-6	Broadview, Ill.	5.5	2.8	.333	.217	.500	24.8
24	Shelby Auseth	F	Jr.	5-9	Wanamingo, Minn.	10.2	4.9	.355	.284	.789	18.8
34	Molly O'Toole	P/F	Fr.	5-11	Plymouth, Minn.	11.0	5.1	.434	.268	.886	24.3



TWITTER
[@GustieAthletics](https://twitter.com/GustieAthletics)



FACEBOOK
facebook.com/GustieAthletics



GAME CENTRAL
client.stretchinternet.com/client/gac.portal



YOUTUBE
youtube.com/gustavusathletics



INSTAGRAM
instagram.com/gustieathletics



FLICKR
flickr.com/photos/googusties



2014-15 GUSTAVUS ADOLPHUS WOMEN'S BASKETBALL GAME NOTES

GUSTAVUS VS. SAINT MARY'S | TUESDAY, FEBRUARY 24

STATISTICAL COMPARISON

GUSTAVUS	vs.	SAINT MARY'S
17-8	Overall Record	17-8
11-7	Conference Record	11-7
67.3	Points Per Game	64.2
+6.7	Scoring Margin	+3.0
.428	Field Goal Percentage	.401
.333	3-PT Field Goal Percentage	.302
.752	Free Throw Percentage	.692
926	Rebounds	954
37.0	Rebounds Per Game	38.2
+5.8	Rebounding Margin	-0.9
355	Assists	353
14.2	Assists Per Game	14.1
0.8	Assist/Turnover Ratio	0.9
17.0	Turnovers Per Game	16.0
+2.2	Turnover Margin	+0.3

GUSTAVUS'S RECORD WHEN...

At home...	9-3
On the road...	7-4
A neutral site...	1-1
In MIAC games...	11-7
In non-conference games...	6-1
When leading after first half...	11-0
When tied after first half...	2-0
When trailing after first half...	3-8
In overtime...	2-0
GAC has more rebounds...	13-5
Opponent has more rebounds...	4-3
Rebounds equal...	0-0
GAC has more assists...	12-2
Opponent has more assists...	5-6
Assists equal...	0-0
GAC commits more fouls...	11-6
Opponent commits more fouls...	6-2
Fouls equal...	0-0
GAC commits more turnovers...	2-6
Opponent commits more turnovers...	13-1
Turnovers equal...	2-1
GAC scores first...	12-3
Opponent scores first...	4-5
Games decided by three or less...	3-2
Games decided by single figures...	8-4
Games decided by double figures...	8-4
In November...	3-1
In December...	4-1
In January...	5-4
In February...	4-2
Following a win...	10-6
Following a loss...	6-1

THE SERIES

Tuesday's game will be the 73rd meeting between Gustavus and Saint Mary's in women's basketball. The Gusties hold the advantage in the all-time series with a record of 51-21. The two squads split the regular season series this year with both teams successfully defending their home court. The Cardinals won the series-opener 74-67 on Jan. 10 in Winona, and Gustavus ran away with a 75-47 win on Feb. 14 in St. Peter.

The Gusties and Cardinals have met just once in the MIAC Playoffs leading up to Tuesday night's game. Saint Mary's won that meeting by the score of 76-69 on Feb. 19, 2013. Despite jumping out to a 45-39 halftime lead, the Cardinals came storming back in the second half, outscoring Gustavus 40-24 on their way to the win.

SCOUTING THE CARDINALS

The Saint Mary's women's basketball team capped the regular season with a pair of wins over Carleton and Macalester last week. Within conference play, Saint Mary's averaged 62.7 points per game (7th) and shot 39.4-percent from field (8th). The Cardinals allowed an average of 63.1 points per game (8th) and limited conference foes to 38.5-percent shooting from the field (5th) and 28.3-percent from three-point range (2nd).

At the conclusion of their conference schedule, Molly O'Toole came out the team's leading scorer with an 11 points per game average despite being limited to just 3.8 points over the squad's last seven games. Recently, Emma Schaefer has emerged as the team's top offensive threat, scoring 12 points the last two games and shooting over 50-percent from the field in three of her last four outings.

NEWS AND NOTES

On The Glass - Although Gustavus will be going against the third-ranked rebounding team in the conference on Tuesday, the Gusties feel confident in their ability to win the battle on the glass after controlling the boards in the season's previous two meetings with Saint Mary's. Gustavus outrebounded Saint Mary's 43-30 in the first matchup and 36-27 in the second. Saint Mary's finished league play ranked third in rebounding (38.2 rpg), while Gustavus ranked eighth (37 rpg). The Gusties, however, boast the league's third-ranked rebounding margin per game at +5.7. Gustavus has held the rebounding edge 18 times this season and is 13-5 in those games. The Gusties are 4-3 when outrebounded.

By The Numbers...

3 - Where Mikayla Miller's league scoring average of 16.2 points per game ranked following the conclusion of MIAC play. The league's third-ranked scorer shot 36.9-percent from the field, averaged 4.7 rebounds, and ranked third in assists with 69 (3.8 apg) against MIAC competition. Miller scored 22 and 20 points, respectively, and shot a combined 51.5-percent from the floor against Saint Mary's this year. Miller's 431 points overall this season rank ninth in program history.

.758 - Gustavus's second-ranked free throw percentage inside league play. With a 75.2-percent clip at the stripe overall, this year's team is just shy of the school record of 77.6-percent set by the 2010-11 team.

12 - Gustavus's turnover average in February. Last Saturday's loss to Saint Benedict was the first this month that Gustavus lost the turnover battle. The Gusties averaged 16 giveaways during league play, ranking fifth in the league.

MIAC STANDINGS/SCHEDULE

SCHOOL	MIAC	OVERALL	MIAC PLAYOFFS
St. Thomas ^ *	18-0	25-0	Quarterfinal: Tuesday, Feb. 24 - 7 p.m.
Bethel ^	14-4	20-5	No. 6 Augsburg at No. 3 Concordia Moorhead, Minn.
Gustavus ^	11-7	17-8	No. 5 Gustavus at No. 4 Saint Mary's Winona, Minn.
Saint Mary's ^	11-7	17-8	
Concordia ^	11-7	15-10	Semifinals: Thursday, Feb. 26 - 7 p.m.
Augsburg ^	9-9	14-11	Lowest remaining seed at No. 1 St. Thomas
Saint Benedict	9-9	12-13	Second-lowest remaining seed at No. 2 Bethel
Hamline	7-11	12-13	
St. Olaf	7-11	10-15	Championship: Saturday, Feb. 28 - 3 p.m.
Carleton	6-12	8-17	Lowest seed at Highest seed Location: TBA
St. Catherine	5-13	10-15	
Macalester	0-18	3-22	



2014-15 GUSTAVUS ADOLPHUS WOMEN'S BASKETBALL GAME NOTES

GUSTAVUS VS. SAINT MARY'S | TUESDAY, FEBRUARY 24

2014-15 GUSTAVUS WOMEN'S BASKETBALL TEAM



2014-15 GUSTAVUS WOMEN'S BASKETBALL NUMERICAL ROSTER

No.	Name	Year	Position	Height	Hometown	High School
3	Emee Udo	First-year	Guard	5-9	Apple Valley, Minn.	Eastview
5	Kelsey Carpenter	Sophomore	Guard	5-8	St. Peter, Minn.	St. Peter
10	Mikayla Miller	First-year	Guard	5-8	Goodhue, Minn.	Goodhue
11	Emily FitzSimmons*	Senior	Guard	5-7	Good Thunder, Minn.	Maple River
12	Anne Odegard	Sophomore	Guard	5-9	St. Paul, Minn.	Cretin-Derham Hall
14	Kate Thiesse	First-year	Forward	5-10	Welcome, Minn.	Martin County West
15	Siri Sviggum	First-year	Guard	5-7	Dennison, Minn.	Kenyon-Wanamingo
20	Hannah Silva-Breen	First-year	Forward	5-10	Prior Lake, Minn.	Prior Lake
21	Morgan Iverson	Sophomore	Forward	5-9	Waconia, Minn.	Waconia
22	Julie Sohre	Junior	Forward	5-10	Good Thunder, Minn.	Maple River
23	Heather Hohenstein	Junior	Guard	5-5	Garden City, Minn.	Lake Crystal Wellcome Memorial
24	Taylor Ebnet	Sophomore	Guard	5-7	Lake Lillian, Minn.	BOLD
30	Kelle Nett	Junior	Forward	5-10	Spring Valley, Ill.	Hall
32	Hannah Howard	Sophomore	Guard	5-9	St. Paul, Minn.	Cretin-Derham Hall
33	Lindsey Johnson*	Junior	Forward	6-0	Edina, Minn.	Edina
34	Maddie Ehrich	Senior	Guard	5-9	Eden Prairie, Minn.	Lion's Gate Christian Academy
40	Anna Lundquist	Junior	Post	5-11	Rochester, Minn.	Mayo
42	Emmaline Crawford	Sophomore	Post	6-0	Mankato, Minn.	East
43	Miranda Rice	First-year	Forward	5-11	Forest Lake, Minn.	Forest Lake
44	Stephanie Klockmann	First-year	Post	5-10	Brownston, Minn.	Glencoe-Silver Lake
50	Cara Christiansen	Sophomore	Forward	5-10	North Mankato, Minn.	West

Head Coach: Laurie Kelly (Third Season)

Assistant Coaches: Dan Wolfe, Angie Potts, Nate Otto



2014-15 GUSTAVUS ADOLPHUS WOMEN'S BASKETBALL GAME NOTES

GUSTAVUS VS. SAINT MARY'S | TUESDAY, FEBRUARY 24

HEAD COACH LAURIE KELLY

Third Season

44-32 at Gustavus

267-221 Overall

Office: 507-933-6145

Email: lkelly@gustavus.edu

Laurie Kelly is in her third season as the head coach of the Gustavus women's basketball team. Kelly, a 1993 graduate of the University of St. Thomas with a degree in speech communications, came to Gustavus from Northern Arizona University in Flagstaff, where she directed the Division I Lumberjacks for nine seasons.

Thanks to a late surge during which the 2013-14 Gustavus women's basketball team won seven of eight games from late-January to mid-February, the Gusties were able finish sixth in the conference standings with a record of 11-11 and earn a trip to the MIAC Playoffs for an MIAC-best 14th consecutive season. Gustavus finished the year with a record of 14-12 overall after falling on the road to No. 3-seeded St. Thomas 66-51 in the quarterfinals of the MIAC Playoffs.

Senior guard Julia Dysythe (White Bear Lake, Minn.) and sophomore post Karina Schroeder (Lake Crystal, Minn.) were both honored as members of the All-Conference Team following the season. Dysythe, a first time all-conference performer, scored a career-high 382 points (13.7 ppg) and shot 42.1-percent from the field. Schroeder, a member of the MIAC All-Rookie Team last season, established herself as one of the top post players in the league after averaging 14.2 points per game, shooting 53.3-percent from the field, and bringing down an average of 8.9 rebounds per game. She led the team in all three categories and finished with the second-best field goal shooting percentage in the league at 51.6-percent against league opponents.

A Rochester, Minnesota, native, Kelly made a quick ascent through the Division II and I coaching ranks after record setting Division III playing career at the University of St. Thomas in the early '90s. In the past nine years at Northern Arizona, she has compiled the most wins in the program's history (117), while also directing the team to its first-ever Big Sky Conference tournament title and NCAA tournament bid in the 2005-06 season. During Kelly's tenure, the Lumberjacks advanced to the Big Sky tournament six times with two appearances in the championship game (2006, 2007), and her teams have registered two of the three 20-win seasons in the program's history.

In addition to quality on the floor, her squads have also been strong in the classroom, with four players earning CoSIDA Academic All-District honors including one Academic All-American. The Lumberjacks were recognized in the Women's Basketball Coaches Association Top 25 Academic Honor Roll six times, with two Top Ten national rankings.

Following the 2012-13 season, the Gustavus women's basketball team achieved a significant milestone when the Women's Basketball Coaches Association (WBCA) announced its Academic Top 25 Team Honor Roll following the year. Making their 15th appearance on the NCAA Division III honor roll, the Gusties were recognized as the team with the top cumulative grade point average in country at a 3.600 – a first in the program's history.

Prior to her position at Northern Arizona, Kelly coached at Binghamton University in New York and built the Bearcats into one of the top Division II programs in the country before helping the institution transition to a Division I program in 2001-02. In that first year of Division I competition, Kelly directed the team to a 19-9 record and a second-place finish in the America East Conference. During her five years at Binghamton, Kelly compiled a record of 94-22, including a mark of 75-13 in the program's final three years at the Division II level, and her squads won New England Collegiate Conference (NECC) titles in 1999 and 2000 and Eastern Collegiate Athletic Conference (ECAC) titles in 2000 and 2001. She was named ECAC Coach of the Year in 2000 and New York State Coach of the Year in 2002. Kelly started her collegiate coaching career as the graduate assistant coach at Minnesota State University, Mankato from 1996 to 1998. While she was at Minnesota State, Mankato she earned a master's degree in physical education with an emphasis in sports administration.

Before her success in the coaching ranks, Laurie Trow Kelly was a standout player at the University of St. Thomas from 1989 to 1993 and is recognized by many as one of the greatest players in NCAA Division III history. A gifted athlete, the 6-1 Kelly scored 2,607 points and pulled down 1,204 rebounds in four years, earning Kodak All-America honors three consecutive seasons. In her senior season (1992-93), Kelly was voted National Player of the Year by the Women's Basketball Coaches Association after averaging more than 26 points per game. She set 22 conference and 24 school records, was conference MVP three times and was also named Midwest Sports Channel NCAA Division III Women's Athlete of the Year. In January of 2006, Kelly was one of five players selected to the NCAA Division III 25th Anniversary Team.

Laurie Kelly is the ninth head coach in the history of the Gustavus women's basketball program. Heading into the 2014-15 season, the Gusties have compiled an all-time record of 632-434 (.593), winning two Minnesota Intercollegiate Athletic Conference championships and making five NCAA tournament appearances.

In addition to her coaching duties, Kelly serves as the coordinator of the Gustavus Health Promotion program (GHP). The Gustavus Health Promotion program offers employees at Gustavus a variety of educational opportunities, assessment tools, and physical activity experiences so that they can achieve and maintain a healthy lifestyle.

Kelly lives in St. Peter with and her husband, Matt, and their two daughters, Morgan and Madison.





2014-15 TV/RADIO ROSTER



**EMME
EDO**
Guard - First-year
Apple Valley, Minn.



**KELSEY
CARPENTER**
Guard - First-year
St. Peter, Minn.



**MIKAYLA
MILLER**
Guard - First-year
Goodue, Minn.



**EMILY
FITZSIMMONS**
Guard - Senior
Good Thunder, Minn.



**ANNE
ODEGARD**
Guard - Sophomore
St. Paul, Minn.



**KATE
THIESSE**
Forward - First-year
Welcome, Minn.



**SIRI
SVIGGUM**
Guard - First-year
Dennison, Minn.



**HANNAH
SILVA-BREEN**
Forward - First-year
Prior Lake, Minn.



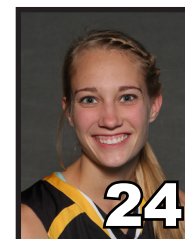
**MORGAN
IVERSON**
Forward - Sophomore
Waconia, Minn.



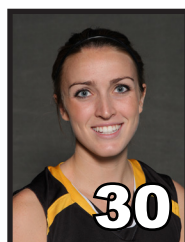
**JULIE
SOHRE**
Forward - Junior
Good Thunder, Minn.



**HEATHER
HOHENSTEIN**
Guard - Junior
Garden City, Minn.



**TAYLOR
EBNET**
Guard - Sophomore
Lake Lillian, Minn.



**KELLE
NETT**
Forward - Junior
Spring Valley, Ill.



**HANNAH
HOWARD**
Guard - Sophomore
St. Paul, Minn.



**LINDSEY
JOHNSON**
Forward - Junior
Edina, Minn.



**MADDIE
EHRICH**
Guard - Senior
Eden Prairie, Minn.



**ANNA
LUNDQUIST**
Post - Junior
Rochester, Minn.



**EMMALINE
CRAWFORD**
Post - Sophomore
Mankato, Minn.



**MIRANDA
RICE**
Forward - First-year
Forest Lake, Minn.



**STEPHANIE
KLOCKMANN**
Post - First-year
Browntown, Minn.



**CARA
CHRISTIENSEN**
Post - Sophomore
North Mankato, Minn.



**LAURIE
KELLY**
Head Coach



**DAN
WOLFE**
Assistant Coach



2014-15 GUSTAVUS ADOLPHUS WOMEN'S BASKETBALL GAME NOTES

GUSTAVUS VS. SAINT MARY'S | TUESDAY, FEBRUARY 24

2014-15 COMBINED SEASON STATISTICS

RECORD:	OVERALL	HOME	AWAY	NEUTRAL
ALL GAMES	17-8	9-3	7-4	1-1
CONFERENCE	11-7	6-3	5-4	0-0
NON-CONFERENCE	6-1	3-0	2-0	1-1

#	Player	gp-gs	min	avg	Total		3-Point		F-Throw		Rebounds				pf	dq	a	to	blk	stl	pts	avg
					fg-fga	pct	3fg-fga	pct	ft-fa	pct	off	def	tot	avg								
10	Mikayla Miller	25-25	810	32.4	148-380	.389	36-114	.316	99-126	.786	32	99	131	5.2	62	2	92	88	1	75	431	17.2
33	Lindsey Johnson	25-25	627	25.1	96-204	.471	24-57	.421	41-48	.854	15	90	105	4.2	57	1	52	43	3	17	257	10.3
32	Hannah Howard	25-24	632	25.3	71-157	.452	0-3	.000	61-83	.735	62	76	138	5.5	74	2	40	53	11	45	203	8.1
34	Maddie Ehrich	24-23	638	26.6	65-144	.451	2-7	.286	55-74	.743	18	55	73	3.0	60	1	52	42	5	22	187	7.8
43	Miranda Rice	25-22	553	22.1	72-148	.486	0-1	.000	38-55	.691	39	68	107	4.3	63	0	32	45	5	31	182	7.3
05	Kelsey Carpenter	24-2	511	21.3	46-127	.362	26-71	.366	16-22	.727	5	31	36	1.5	39	0	19	34	1	9	134	5.6
44	Stephanie Klockmann	22-3	296	13.5	39-64	.609	0-1	.000	10-23	.435	35	34	69	3.1	38	0	19	16	5	16	88	4.0
50	Cara Christiansen	16-0	162	10.1	14-39	.359	1-2	.500	14-16	.875	12	11	23	1.4	19	0	6	13	0	9	43	2.7
12	Anne Odegard	4-0	13	3.3	3-6	.500	0-3	.000	3-3	1.000	0	0	0	0.0	1	0	0	2	0	0	9	2.3
15	Siri Sviggum	25-0	284	11.4	15-38	.395	6-22	.273	15-20	.750	16	21	37	1.5	14	0	13	12	2	7	51	2.0
14	Kate Thiesse	1-0	3	3.0	1-1	1.000	0-0	.000	0-0	.000	1	0	1	1.0	1	0	0	0	0	0	2	2.0
42	Emmaline Crawford	13-0	88	6.8	7-18	.389	0-1	.000	10-15	.667	7	14	21	1.6	14	1	2	8	5	4	24	1.8
40	Anna Lundquist	12-0	62	5.2	4-19	.211	0-0	.000	13-15	.867	11	15	26	2.2	10	0	1	6	1	2	21	1.8
21	Morgan Iverson	11-0	118	10.7	5-14	.357	1-4	.250	5-6	.833	4	9	13	1.2	8	0	8	9	3	0	16	1.5
22	Julie Sohre	5-0	21	4.2	2-3	.667	0-0	.000	1-2	.500	0	5	5	1.0	2	0	1	2	0	1	5	1.0
24	Taylor Ebnet	5-0	10	2.0	1-2	.500	0-0	.000	2-2	1.000	3	2	5	1.0	2	0	1	3	0	0	4	0.8
03	Emee Udo	16-0	88	5.5	5-13	.385	0-0	.000	2-3	.667	5	12	17	1.1	7	0	4	6	1	3	12	0.8
30	Kelle Nett	8-0	19	2.4	1-3	.333	0-0	.000	4-4	1.000	1	3	4	0.5	0	0	2	1	0	1	6	0.8
23	Heather Hohenstein	12-0	79	6.6	1-6	.167	0-1	.000	3-4	.750	0	4	4	0.3	7	0	10	7	0	2	5	0.4
11	Emily FitzSimmons	8-1	33	4.1	1-8	.125	1-4	.250	0-0	.000	2	3	5	0.6	2	0	1	3	0	1	3	0.4
20	Hannah Silva-Breen	1-0	2	2.0	0-0	.000	0-0	.000	0-0	.000	0	0	0	0.0	0	0	0	0	0	0	0	0.0
Total.....		25	5049		597-1394	.428	97-291	.333	392-521	.752	318	608	926	37.0	480	7	355	426	43	245	1683	67.3
Opponents.....		25	5056		520-1259	.413	156-423	.369	319-500	.638	235	546	781	31.2	449	-	292	482	69	195	1515	60.6

TEAM STATISTICS	GAC	OPP
SCORING	1683	1515
Points per game	67.3	60.6
Scoring margin	+6.7	-
FIELD GOALS-ATT	597-1394	520-1259
Field goal pct	.428	.413
3 POINT FG-ATT	97-291	156-423
3-point FG pct	.333	.369
3-pt FG made per game	3.9	6.2
FREE THROWS-ATT	392-521	319-500
Free throw pct	.752	.638
F-Throws made per game	15.7	12.8
REBOUNDS	926	781
Rebounds per game	37.0	31.2
Rebounding margin	+5.8	-
ASSISTS	355	292
Assists per game	14.2	11.7
TURNOVERS	426	482
Turnovers per game	17.0	19.3
Turnover margin	+2.2	-
Assist/turnover ratio	0.8	0.6
STEALS	245	195
Steals per game	9.8	7.8
BLOCKS	43	69
Blocks per game	1.7	2.8
ATTENDANCE	2427	2458
Home games-Avg/Game	12-202	11-184
Neutral site-Avg/Game	-	2-215

Date	Opponent	Score	Att.
11-15-14	CROWN COLLEGE	w 31-81	182
11-16-14	MARTIN LUTHER	w 58-74	72
11-22-14	MINNESOTA MORRIS	w 67-82	220
11/29/14	vs Dubuque	L 76-78	347
11/30/14	vs St. Scholastica	w 58-71	83
* 12/3/14	at St. Thomas	L 43-76	200
* 12/6/14	ST. CATHERINE	w 50-61	213
* 12/13/14	HAMLIN UNIVERSITY	w 68-70	84
12/20/14	at Northwestern (Minn.)	w 71-62	347
12/30/14	at UW-River Falls	Wot 65-57	204
* 1/3/2015	at St. Olaf	w 64-62	0
* 01/07/15	at Augsburg College	w 83-49	101
* 1/10/15	at Saint Mary's	L 67-74	230
* 1/14/15	CONCORDIA COLLEGE	w 57-64	318
* 01/17/15	at Saint Benedict	w 55-52	208
* 1/21/15	BU	L 65-52	264
* 01/24/15	at St. Catherine University	Wot 85-78	185
* 1/28/15	ST. THOMAS	L 62-49	212
* 1/31/15	at Hamline University	L 79-82	0
* 02/04/15	at Carleton College	w 62-34	211
* 2/7/15	ST. OLAF	w 58-66	222
* 2/11/15	at Concordia-M'head	L 59-72	342
* 2/14/15	SAINT MARY'S	w 47-75	388
* 2/18/15	MACALESTER COLLEGE	w 49-69	84
* 2/21/15	SAINT BENEDICT	L 69-60	168

* - Conference game



2014-15 GUSTAVUS ADOLPHUS WOMEN'S BASKETBALL GAME NOTES

GUSTAVUS VS. SAINT MARY'S | TUESDAY, FEBRUARY 24

2014-15 GAME-BY-GAME STATISTICAL COMPARISON

Opponent	1st	2nd	Score	Mar	Total FG	FG Pct	3-Pointers	3FG Pct	Free Throws	FT Pct	Rebounds	Assist	T/Over	Block	Steal	Fouls
CROWN COLLEGE	43/17	38/14	81-31	+50	26-60/10-44	.433/.227	8-20/2-9	.400/.222	21-28/9-20	.750/.450	44/34 +10	15/5	21/34	2/0	14/10	26/20
MARTIN LUTHER	38/24	36/34	74-58	+16	28-63/19-53	.444/.358	0-4/4-13	.000/.308	18-20/16-24	.900/.667	43/31 +12	17/9	21/24	2/3	14/11	20/18
MINNESOTA MORRIS	42/28	40/39	82-67	+15	28-53/22-53	.528/.415	5-11/9-18	.455/.500	21-25/14-23	.840/.609	38/28 +10	18/11	17/20	1/2	12/2	21/18
Dubuque	34/36	42/42	76-78	(2)	28-53/25-55	.528/.455	6-14/10-18	.429/.556	14-23/18-26	.609/.692	36/26 +10	19/13	22/14	1/0	8/11	24/17
St. Scholastica	31/21	40/37	71-58	+13	25-52/20-56	.481/.357	5-14/5-16	.357/.313	16-20/13-15	.800/.867	42/24 +18	12/7	20/15	2/1	8/9	16/14
St. Thomas	27/39	16/37	43-76	(33)	14-40/27-51	.350/.529	4-10/7-19	.400/.368	11-14/15-19	.786/.789	24/31 (7)	12/17	24/15	1/7	7/11	20/19
ST. CATHERINE	32/27	29/23	61-50	+11	20-44/16-55	.455/.291	3-14/4-17	.214/.235	18-24/14-22	.750/.636	42/31 +11	11/9	20/12	0/2	9/12	17/22
HAMLIN UNIVERSITY	41/23	29/45	70-68	+2	24-58/29-55	.414/.527	4-12/9-23	.333/.391	18-23/1-6	.783/.167	31/37 (6)	10/13	12/22	0/4	10/2	13/19
Northwestern (Minn.)	30/32	41/30	71-62	+9	22-66/25-56	.333/.446	5-10/6-26	.500/.231	22-29/6-13	.759/.462	39/44 (5)	10/12	14/26	0/5	13/6	15/24
UW-River Falls	28/33	23/18	65-57	+8	24-48/21-53	.500/.396	3-6/4-13	.500/.308	14-25/11-27	.560/.407	29/42 (13)	9/13	23/30	2/0	18/16	24/19
St. Olaf	26/34	38/28	64-62	+2	20-54/21-50	.370/.420	6-20/9-22	.300/.409	18-25/11-19	.720/.579	38/34 +4	10/14	13/17	2/0	8/6	17/21
Augsburg College	43/20	40/29	83-49	+34	34-61/18-52	.557/.346	1-7/3-19	.143/.158	14-21/10-14	.667/.714	44/24 +20	26/13	17/21	1/6	13/13	18/17
Saint Mary's	33/40	34/34	67-74	(7)	26-64/26-50	.406/.520	1-11/7-15	.091/.467	14-16/15-31	.875/.484	43/30 +13	12/17	18/15	1/1	6/6	27/14
CONCORDIA COLLEGE	33/29	31/28	64-57	+7	23-55/16-43	.418/.372	1-6/7-19	.167/.368	17-18/18-23	.944/.783	38/26 +12	10/11	18/19	3/3	10/7	21/19
Saint Benedict	26/26	29/26	55-52	+3	20-52/18-55	.385/.327	3-5/6-16	.600/.375	12-16/10-18	.750/.556	39/34 +5	15/13	17/14	3/6	4/8	17/14
BU	22/29	30/36	52-65	(13)	19-60/19-46	.317/.413	3-10/4-8	.300/.500	11-14/23-37	.786/.622	41/36 +5	12/7	19/14	4/11	6/8	24/14
St. Catherine University	35/24	33/44	85-78	+7	31-63/25-59	.492/.424	3-11/9-22	.273/.409	20-28/19-21	.714/.905	43/29 +14	22/14	18/18	3/4	5/9	19/24
ST. THOMAS	23/36	26/26	49-62	(13)	13-38/20-45	.342/.444	3-8/6-17	.375/.353	20-27/16-20	.741/.800	21/31 (10)	8/12	18/18	1/3	8/7	17/23
Hamline University	36/49	43/33	79-82	(3)	26-57/25-49	.456/.510	6-15/10-18	.400/.556	21-28/22-36	.750/.611	39/25 +14	16/13	22/17	2/1	9/9	25/18
Carleton College	38/20	24/14	62-34	+28	24-68/10-38	.353/.263	3-19/2-12	.158/.167	11-16/12-15	.688/.800	40/34 +6	13/6	7/28	4/3	15/4	11/13
ST. OLAF	33/31	33/27	66-58	+8	26-51/20-37	.510/.541	8-18/11-22	.444/.500	6-7/7-15	.857/.467	21/27 (6)	17/14	7/21	0/0	8/4	19/13
Concordia-M'head	19/39	40/33	59-72	(13)	19-54/26-49	.352/.531	3-9/8-19	.333/.421	18-23/12-15	.783/.800	25/38 (13)	10/15	12/18	1/0	8/6	18/21
SAINT MARY'S	42/22	33/25	75-47	+28	31-61/18-48	.508/.375	6-10/3-14	.600/.214	7-9/8-12	.778/.667	36/27 +9	21/9	10/18	2/3	10/4	17/10
MACALESTER COLLEGE	33/33	36/16	69-49	+20	24-64/17-54	.375/.315	3-14/5-13	.214/.385	18-26/10-15	.692/.667	57/28 +29	17/9	16/16	3/2	9/8	18/23
SAINT BENEDICT	23/32	37/37	60-69	(9)	22-55/27-53	.400/.509	4-13/6-15	.308/.400	12-16/9-14	.750/.643	33/30 +3	13/16	20/16	2/2	13/6	16/15

Note: Game totals are displayed in the format TEAM/OPPONENT for each category