

# GUSTAVUS ADOLPHUS COLLEGE

## 2014-15 MEN'S HOCKEY GAME NOTES

### 2014-15 GUSTAVUS SCHEDULE

DATE	OPPONENT	TIME/RESULT
10/31	Bethel University#	L 2-4
11/2	St. Olaf College#	W 6-3
<b>11/7</b>	<b>UW-STEVENS POINT</b>	<b>L 1-4</b>
<b>11/8</b>	<b>UW-STOUT</b>	<b>W 4-3</b>
11/14	Concordia College*	W 2-1
11/15	Concordia College*	T 3-3 (SL)
11/21	Hamline University*	T 3-3 (SW)
<b>11/22</b>	<b>HAMLIN UNIVERSITY*</b>	<b>T 2-2 (SW)</b>
<b>11/29</b>	<b>LAWRENCE UNIVERSITY</b>	<b>T 3-3</b>
<b>11/30</b>	<b>MARIAN UNIVERSITY</b>	<b>L 1-2</b>
<b>12/5</b>	<b>ST. OLAF COLLEGE*</b>	<b>T 3-3 (SL)</b>
12/6	St. Olaf College*	L 2-4
<b>1/2</b>	<b>WILLIAMS COLLEGE</b>	<b>L 2-3</b>
<b>1/9</b>	<b>FINLANDIA UNIVERSITY</b>	<b>W 4-2</b>
<b>1/10</b>	<b>COLLEGE OF ST. SCHOLASTICA</b>	<b>T 0-0</b>
1/16	Augsburg College*	L 3-5
<b>1/17</b>	<b>AUGSBURG COLLEGE*</b>	<b>W 3-0</b>
1/23	Saint Mary's University*	L 0-3
<b>1/24</b>	<b>SAINT MARY'S UNIVERSITY*</b>	<b>W 2-1 (OT)</b>
1/30	Saint John's University*	T 1-1 (SL)
<b>2/31</b>	<b>SAINT JOHN'S UNIVERSITY*</b>	<b>L 2-3</b>
<b>2/13</b>	<b>UNIVERSITY OF ST. THOMAS*</b>	<b>T 1-1 (SW)</b>
2/14	University of St. Thomas*	W 3-1
2/20	Bethel University*	7:00 p.m.
<b>2/21</b>	<b>BETHEL UNIVERSITY*</b>	<b>7:05 p.m.</b>

HOME GAMES in BOLD FACE CAPS; all times Central

\* MIAC game

# MIAC Showcase (Blaine, Minn.)

### GUSTAVUS QUICK FACTS

<b>Location:</b>	St. Peter, Minnesota
<b>Address:</b>	800 West College Ave. St. Peter, MN 56082
<b>Founded:</b>	1862
<b>Enrollment:</b>	2,500
<b>Nickname:</b>	Golden Gusties
<b>School Colors:</b>	Black and Gold
<b>Home Arena:</b>	Don Roberts Ice Rink
<b>Conference:</b>	Minnesota Intercollegiate Athletic
<b>NCAA Affiliation:</b>	NCAA Division III
<b>President:</b>	Rebecca M. Bergman
<b>Athletic Director:</b>	Tom Brown
<b>Assistant Athletic Director:</b>	Jared Phillips
<b>Athletic Trainer:</b>	Troy Banse
<b>Equipment Manager:</b>	Wayne Norman
<b>Sports Information Director:</b>	Ethan Armstrong
<b>Sports Information Graduate Assistant:</b>	Nick Hoelmer

### GUSTAVUS ADOLPHUS COLLEGE

"Golden Gusties"

7-8-8 Overall, 4-4-6 MIAC

### BETHEL UNIVERSITY

"Royals"

3-18-2 Overall, 1-12-1 MIAC

#### GAME 24

BLAINE, MINN.

#### GAME INFORMATION

**DATE:** Friday, February 20

**TIME:** 7:00 p.m.

**SITE:** Blaine, Minnesota

**ARENA:** Bethel Ice Arena - Schwan Super Rink

**WEB VIDEO:** <http://portal.stretchinternet.com/bethel/>

**LIVE STATS:** <http://portal.stretchinternet.com/bethel/>

#### GAME 25

ST. PETER, MINN.

#### GAME INFORMATION

**DATE:** Saturday, February 21

**TIME:** 7:05 p.m.

**SITE:** St. Peter, Minnesota

**ARENA:** Don Roberts Ice Rink

**WEB VIDEO:** <http://portal.stretchinternet.com/gac>

**LIVE STATS:** <https://gustavus.edu/athletics/hky/LIVE/xlive.htm>

#### SETTING THE SCENE

The Gustavus Adolphus men's hockey team will cap the regular season with a home-and-home Minnesota Intercollegiate Athletic Conference series against the Royals of Bethel University this weekend.

The weekend will begin with a 7:00 p.m. game at the Bethel Ice Arena in Blaine on Friday, Feb. 20. The series and regular season will come to an end at Don Roberts Ice Rink on Saturday, Feb. 21 at 7:05 p.m.

Just like last weekend, the Gustavus men's hockey team enters the weekend with a do-or-die mentality as it pushes for a spot in the 2015 MIAC Playoffs. At 7-8-8 overall and 4-4-6 in the MIAC, the Gusties sit seventh in the conference standings with 21 points alongside Augsburg. Saint John's currently holds the fifth and final playoff spot with 24 points. A loss or a tie would like be the end of Gustavus's season. At 3-18-2 overall and 1-12-1 in the MIAC, Bethel looks to play spoiler and gash the Gusties' playoff push this weekend.

#### TICKET INFORMATION

Tickets for Gustavus athletic events are available for purchase prior to each home event one hour prior to the scheduled game time. Men's hockey general admission tickets are \$5 for adults, \$4 for visiting college students with ID, \$2 for ages 12-18, and free for ages 12 and under 62 and over.



**TWITTER**  
[@GustieAthletics](https://twitter.com/GustieAthletics)



**FACEBOOK**  
[facebook.com/GustieAthletics](https://facebook.com/GustieAthletics)



**GAME CENTRAL**  
[client.stretchinternet.com/client/gac.portal](http://client.stretchinternet.com/client/gac.portal)



**YOUTUBE**  
[youtube.com/gustavusathletics](https://youtube.com/gustavusathletics)



**INSTAGRAM**  
[instagram.com/gustieathletics](https://instagram.com/gustieathletics)



**FLICKR**  
[flickr.com/photos/googusties](https://flickr.com/photos/googusties)

#### MEN'S HOCKEY MEDIA CONTACT

Sports Information Director: Ethan Armstrong

Email: [earmstr2@gac.edu](mailto:earmstr2@gac.edu) • Cell: 320-815-2351 • Office: 507-933-7647

14-TIME MIAC CHAMPION



# 2014-15 GUSTAVUS ADOLPHUS MEN'S HOCKEY GAME NOTES

## STATISTICAL COMPARISON

<b>Gustavus</b>		<b>Bethel</b>
2.30 (7th)	<b>Goals For</b>	2.30 (7th)
2.39 (3rd)	<b>Goals Against</b>	4.39 (9th)
13/70-18.6% (4th)	<b>Power Play</b>	15/99-15.2% (7th)
62/68-91.2% (1st)	<b>Penalty Kill</b>	73/93-78.5% (8th)
+3 (4th)	<b>Special Teams Net</b>	-9 (9th)
9.0 (9th)	<b>Penalty Minutes</b>	12.3 (2nd)

- 2014-15 overall per game averages with MIAC rank

## THE SERIES

### VS. BETHEL

<b>All-Time</b>	55-23-1
<b>Last Meeting</b>	L 4-2 (10-31-14)
<b>Current Streak</b>	L - 1

<b>Head Coach Brett Petersen</b>	
Record at Gustavus	205-156-40
vs. Bethel	9-18-9

<b>Head Coach Charlie Burggraf</b>	
Record at Bethel	62-139-19
vs. Gustavus	5-5-0

<b>Last Ten</b>		<b>5-5-0</b>
<b>Date</b>	<b>Location</b>	<b>Result</b>
10/31/14	Blaine, Minn.	L 2-4
2/22/14	Blaine, Minn.	W 1-0
2/21/14	St. Peter, Minn.	W 4-1
11/1/13	Blaine, Minn.	W 2-1
11/10/12	St. Peter, Minn.	L 0-2
11/9/12	Blaine, Minn.	L 2-3
11/12/11	Blaine, Minn.	L 2-3
11/11/11	St. Peter, Minn.	W 4-1
11/20/10	St. Peter, Minn.	W 5-4
11/19/10	Blaine, Minn.	L 1-4

## CAREER SCORING VS. BETHEL

Player	Games	Goals	Assists	Points
Jack Walsh	8	2	5	5
Andy Pearson	7	1	4	5
Darren Lopic	7	1	2	3
Sam Smith	6	1	1	2
Schlyer Adams	3	1	0	1
Drew Aspinwall	4	0	1	1
Blake Schammel	8	2	0	2
Cory Ellis	4	1	0	1
Jared Docken	4	0	0	0
Gavin Tuffe	3	0	0	0
Sam Majka	3	0	1	1
Ross Kovacs	2	0	0	0
Nate Paulsen	3	0	0	0
Tyler Lopic	4	1	0	1
Joncarlo Westerlund	1	0	0	0
Jake Bushey	1	0	0	0
Conor Deal	1	1	0	1
Tim Donohue	1	0	0	0
Sam Akins	1	0	0	0
Mason Wyman	1	0	0	0
Blake Barnes	1	0	0	0
<b>Goaltending</b>	<b>Record</b>	<b>Min.</b>	<b>GA</b>	<b>Saves</b>
John McLean	3-1-0	239:46	5	88
Erik Johnson	0-1-0	57:51	4	27

## GAME NOTES

### LIVE COVERAGE

Live video and live stats for Friday and Saturday night's games will be provided through the links below.

The Bethel Sports Information Department will produce the live coverage for Friday night's game at the Bethel Ice Arena.

### Live Video/Stats

<http://portal.stretchinternet.com/bethel/>

Ethan Armstrong will be in Don Roberts Ice Rink for the live call of Friday night's game. New this season, Gustavus will provide a high definition video stream of all home games for viewing on your computer, tablet, or smart phone through GameCentral by Stretch Internet.

### Live Video

<http://portal.stretchinternet.com/gac/>

### Live Stats

<https://gustavus.edu/athletics/hky/LIVE/xlive.htm>

### GUSTAVUS EMBARKS ON 73RD SEASON OF MEN'S HOCKEY

The Gustavus men's hockey team is in its 73rd season of existence. One of the storied programs in collegiate hockey, Gustavus has compiled an all-time record of 856-626-76 overall and 567-429-48 in the MIAC. The Gusties have won 14 MIAC Championships and earned a place in the NCAA Division III Tournament six times, which includes a runner-up finish in 2009.

Gustavus first recognized a men's hockey team in 1937 when then Director of Physical Education George Myrum became interested in the sport and raised the funds to sponsor a team. The Gusties fell to Carleton in their first ever intercollegiate game in 1936. It would take until 1939, the first year Gustavus played on natural ice in the on-campus fieldhouse, for Gustavus to record the first victory in the program's history.

### GUSTAVUS COACHING STAFF

Head Coach Brett Petersen is in his 15th season at the helm of the Gustavus men's hockey program. Petersen has compiled a 205-156-40 overall record in his 14-plus seasons at Gustavus. His win total at Gustavus ranks second behind legendary coach Don Roberts. He has been named MIAC Coach of the Year twice in his tenure, once in 2001-02 and again in 2009-10.

Within MIAC play, Gustavus holds a record 128-83-27 during the Petersen era. The Gusties have earned a trip to the MIAC Playoffs 13 straight seasons and have advanced to the MIAC Playoff Championship a total of six times under Petersen. Since the turn of the century, Gustavus has qualified for the NCAA Division III Tournament three times in 2009, 2010, and 2012. The Gusties advanced all the way to the NCAA Championship in 2009 where they fell to Neumann 4-1 at Herb Brooks Arena in Lake Placid, N.Y.

Petersen, a Roseville, Minn. native, received his Bachelor of Science degree in business administration from the University of Denver in 1992 and his Master of Science degree in athletic administration in 2000 from St. Cloud State.

Former men's hockey standout David Martinson is in his third season as the assistant men's hockey coach at Gustavus. A 2010 graduate and one of the most decorated hockey players to don a three crowned sweater, Martinson is a native of St. Louis Park, Minn. After being named the MIAC Player of the Year and earning All-America honors twice during his playing career, Martinson continued his education at the Bowling Green State University where he served as a graduate assistant for the men's hockey team. In the fall of 2012, David received his masters of education in sport administration.

### BETHEL COACHING STAFF

Charlie Burggraf has been the head coach of the Bethel men's hockey team since 2010. Prior to taking the men's job, Burggraf served as the head coach of the Bethel women's hockey team for four years from 2006-to-2010. A native of Roseau, Minn., Burggraf played collegiate hockey at the University of North Dakota where he earned a degree in business administration/marketing in 1979.

Coach Burggraf is assisted by Tim Fisher (St. Thomas '01), Tom Stumpf, and Dan Bjornlie (Wisconsin '00).

### AROUND THE GLOBE

Gustavus's 2014-15 roster features 28 players from six different states and one player from Canada. Within the United States, Minnesota (22), Alaska (1), California (1), North Dakota (1), Oklahoma (1), and Vermont (1) are represented by 27 players. Outside the U.S., the Canadian province of British Columbia is home to Sam Smith.

### PRIOR EXPERIENCE

All 28 players on Gustavus's roster previously played junior hockey before beginning their collegiate careers. Thirteen of this year's Gusties are alumni of the North American Hockey League (NAHL), while four played in the Superior International Junior Hockey League (SIJHL). The Eastern Junior Hockey League (EJHL), North American Tier III Hockey League (NA3HL), and Western States Hockey League (WSHL) are each represented by two players. The United States Hockey League (USHL), British Columbia Hockey League (BCHL), Central Canada Hockey League (CCHL), American West Hockey League (AWHL), and Minnesota Junior Hockey League (MNJHL) were all home to one future Gustie.



# 2014-15 GUSTAVUS ADOLPHUS MEN'S HOCKEY GAME NOTES

## GUSTAVUS HOCKEY FACTS

<b>2013-14 Record:</b>	16-7-4
<b>2013-14 MIAC Record/Finish:</b>	12-3-1/Second
<b>All-Time Record:</b>	856-626-76
<b>All-Time MIAC Record:</b>	567-429-48
<b>MIAC Championships :</b>	14
<b>Lettermen Returning/Lost:</b>	19/8
<b>All-MIAC Honorees Returning/Lost:</b>	3/1

## GUSTAVUS' RECORD WHEN...

At home	4-4-5
On the road	2-3-3
Neutral Site	1-1-0
GAC scores 4 or more goals	3-0-0
GAC scores 3 goals	3-1-4
GAC scores 2 or fewer goals	2-7-4
GAC scores first	5-1-3
Opponent scores first	3-7-3
GAC leads after 1st period	2-2-1
Opponent leads after 1st period	2-4-2
Tied after 1st period	3-2-5
GAC leads after 2nd period	5-1-1
Opponent leads after 2nd period	0-5-2
Tied after 2nd period	2-2-5
Games decided by one goal	3-3
Games decided by two goals	2-3
Games decided by three goals	2-2
Games decided by four or more	0-0
GAC scores on the power play	2-3-3
GAC scoreless on the power play	3-5-3
GAC scores two or more PP goals	0-1-0
GAC outshoots opponent	4-6-4
GAC outshot by opponent	3-2-4
Shots equal	0-0-0
Friday	2-5-4
Saturday	4-2-4
Sunday	1-1-0
In October	0-1-0
In November	3-2-3
In December	0-1-1
In January	3-4-2
In February	1-0-1
Following a win	1-2-3
Following a loss	4-2-2
Following a tie	1-4-3

## GAME NOTES

### CAPTAIN'S LOG: 2014-15

The 2014-15 Gustavus men's hockey team is led by senior captains Jack Walsh (Mahtomedi, Minn.) and Tyler Lopic (New Prague, Minn.). In the 72-year history of Gustavus men's hockey, Walsh and Lopic are the 87th and 88th student-athletes to earn the right of wearing a "C" on their Gustavus sweater. Jack Walsh is the program's first two-time captain since Ross Ring-Jarvi '12 served during the 2010-11 and 2011-12 seasons.

### SENIOR LEADERSHIP

Eight student-athletes are in their fourth and final season on the Gustavus men's hockey team. Sam Smith (Vancouver, B.C.), Jack Walsh, Tyler Lopic, Schyler Adams (New Prague, Minn.), Nate Paulsen (La Habra, Calif.), Andy Pearson (Burnsville, Minn.), Cory Ellis (St. Paul, Minn.), and Blake Schammel (Red Wing, Minn.) make up this year's Golden Gustie seniors. All eight have been significant contributors to the program since coming to campus in the fall of 2011.

### LETTERWINNERS AND FRESH FACES

Brett Petersen returned 20 letterwinners from a 2013-14 squad that went 16-7-4 overall (12-3-1 MIAC) and advanced to the MIAC Playoff Championship for the third consecutive season. To go along with his 20 returners, coach Petersen welcomes eight new players to the team. Five of the eight fresh faces are frosh while the other three spent last season on Gustavus's junior varsity team. This season's rookies include Jake McCann (Shoreview, Minn.), Jake Bushey (Duluth, Minn.), Conor Deal (Anchorage, Alaska), Tim Donohue (Bloomington, Minn.), and Isak Tjaden (Eagan, Minn.). Sophomores Cameron Jackson (Lakeville, Minn.), Matt Petersen (Center City, Minn.), and Mason Wyman (Burnsville, Minn.) moved up to varsity after a season on JV. McCann, Deal, Donohue, and Wyman are forwards, Bushey, Jackson, and Petersen are defenseman, and Tjaden is a goaltender.

### THE LONG AND WINDING ROAD

To go along with the team's standard 16 Minnesota Intercollegiate Athletic Conference contests, this season's long and winding schedule features non-conference games against teams belonging to the MIAC, WIAC, NCHA, and NESCAC. In addition to non-league games against conference foes Bethel and St. Olaf this weekend at the MIAC Showcase, Gustavus will face UW-Stevens Point (Nov. 7) and UW-Stout (Nov. 8) of the WIAC, Lawrence (Nov. 29), Marian (Nov. 30), Finlandia (Jan. 9), and St. Scholastica (Jan. 10) of the NCHA, and Williams (Jan. 2) of the NESCAC. The Gusties will play 13 of its games at home at Don Roberts Ice Rink including non-conference bouts against Lawrence and Marian in the MIAC/NCHA Thanksgiving Showdown Nov. 29 and Nov. 30.

### THE SERIES

This weekend's games will be the 80th and 81st meetings between Gustavus and Bethel in men's hockey. The Gusties hold the advantage in the all-time series with a record of 55-23-1. The two squads met in the 2014-15 season-opener at the MIAC Showcase on Oct. 31 in Blaine. The Royals came away with a 4-2 victory thanks to three unanswered goals scored within the opening 15 minutes of the game. Although Gustavus battled back to cut the lead to one down 3-2 in the third period, Bethel put to rest any comeback hopes with a late goal by Brock Raffaele at the 15:04 mark. Erik Johnson suffered the loss after allowing four goals and making 27 saves. Matt Rowe picked up the season-opening win in a 32-save effort.

### ABOUT LAST WEEKEND

When last weekend began, the Gustavus men's hockey team sat in a tie for seventh place in the conference standings alongside St. Olaf with 16 points. The Gusties needed points and a loss would more than likely knock them out of playoff contention. The Tommies began the weekend ranked 15th in the country, alone atop the conference standings with 27 points, and with only one blemish on their record since the holiday break.

In Friday night's series-opener at Don Robert Ice Rink, 60 minutes of regulation and five minutes of overtime couldn't produce a winner and a shootout was needed to determine the extra point. Sam Majka provided the Gusties the shootout win after a 1-1 tie, and John McLean stopped 30-of-31 shots.

In Saturday night's series-finale at the St. Thomas Ice Arena where the Tommies boasted a record of 10-0-2 heading in weekend, the Gusties capitalized on the power play and got another standout effort by its goaltender in a 3-1 victory. Gustavus went 3-for-4 on the power play with two goals by Majka and another by Jared Docken. The Gusties scored two unanswered goals to go up 3-1 in the second and shut the Tommies down for the remainder. John McLean capped the weekend by turning away 36-of-37 shots.

### SCOUTING THE ROYALS

The Bethel men's hockey team is coming off a split against Saint John's University last weekend. After beginning the year with two wins at the MIAC Showcase, the Royals didn't return to the win column until last Friday's 2-0 victory over Saint John's in Blaine. The Johnnies bounced back and salvaged a split with a 6-3 win on Saturday night in St. Cloud.

The Royals head into the weekend with the seventh ranked offense (2.3 gpg) and the ninth ranked defense (4.39 gpg). Bethel holds a 15.2 power play percentage (7th/MIAC) and a 78.5 penalty kill percentage (8th/MIAC).

Leading the Bethel offensive is junior forward Mitch Hughes who has nine goals and 11 assists for 20 points. Junior center Brock Raffaele has 16 points on five goals and 11 assists, while freshman forward Jackson Purvis (7G, 6A) and junior forward Travis Payne (5G, 8A) each have 13 points.

Junior Matt Rowe has seen the majority of time in goal at 2-10-1 in 782:03 minutes. It was Rowe who got the win against Saint John's last weekend in a 31-save outing. He holds a goals against average of 4.14 and a save percentage of .883.



# 2014-15 GUSTAVUS ADOLPHUS MEN'S HOCKEY GAME NOTES

## 2014-15 MIAC STANDINGS

SCHOOL	POINTS	MIAC	OVERALL
Concordia ^	28	8-5-3	13-8-4
St. Thomas ^	28	8-3-3	14-5-4
Hamline	25	7-4-3	11-8-4
Saint Mary's	25	7-5-2	12-9-2
Saint John's	24	7-5-2	11-7-5
Augsburg	21	7-7	10-13
<b>Gustavus</b>	<b>21</b>	<b>4-4-6</b>	<b>7-8-8</b>
St. Olaf	16	4-8-2	6-14-3
Bethel	4	1-12-1	3-18-2

## AROUND THE MIAC

### Friday, Feb. 20

Gustavus at Bethel | 7:00 p.m.  
 Saint John's at St. Thomas | 7:00 p.m.  
 Hamline at St. Thomas | 7:00 p.m.  
 Augsburg at St. Olaf | 7:30 p.m.

### Saturday, Feb. 21

Saint Mary's at Hamline | 7:00 p.m.  
 Bethel at Gustavus | 7:05 p.m.  
 St. Olaf at Augsburg | 7:05 p.m.

## USCHO.COM DIII MEN'S POLL

No.	Team	Record	Points	Last Poll
1	Oswego (9)	17-2-3	281	2
2	Norwich (7)	21-3-1	274	1
3	Trinity (2)	19-2-1	248	4
4	Adrian (2)	19-3-3	228	5
5	Wisconsin-Stevens Point	18-5-0	221	3
6	Massachusetts-Boston	21-3-1	201	7
7	Wisconsin-River Falls	18-4-1	191	6
8	St. Norbert	17-5-2	157	8
9	Plattsburgh	17-5-1	144	9
10	Amherst	16-4-2	107	11
11	Babson	17-5-3	99	10
12	Wisconsin-Eau Claire	15-6-2	92	12
13	Hobart	18-6-0	47	NR
14	Williams	14-6-2	37	14
15	Lake Forest	14-6-5	28	13

## D3HOCKEY.COM DIII TOP 15 POLL

No.	Team	Record	Points	Last Poll
1	Oswego State (13)	17-2-3	291	2
2	Adrian (3)	19-3-3	268	4
3	Norwich (3)	21-3-1	259	1
4	Trinity (Conn.) (1)	19-2-1	243	5
5	UW-Stevens Point	18-5-0	225	3
6	Mass-Boston	21-3-1	200	6
7	St. Norbert	17-5-2	162	8
8	UW-Eau Claire	15-6-2	153	9
9	UW-River Falls	18-4-1	146	7
10	Plattsburgh State	17-5-1	126	10
11	Amherst	16-4-2	105	12
12	Hobart	18-6-0	75	15
13	Babson	17-5-3	63	11
14	St. Thomas	14-5-4	30	13
15	Lake Forest	14-6-5	15	14

## GAME NOTES

### UNBEATEN IN OT

Gustavus's win over Saint Mary's on Jan. 24 was the team's first overtime victory since Nov. 8, 2014 when the Gusties came away with a 4-3 win over UW-Stout. Gustavus is now 2-0-7 in overtime games following its 1-1 draw against St. Thomas last Friday. Gustavus's last overtime loss came against the Tommies in a 4-3 defeat on Nov. 18, 2011 in Mendota Heights. Since that loss, Gustavus has compiled a record of 4-0-18 in overtime games.

In those four overtime wins, three of the team's game-winning goals have been scored in the final minute of the overtime session. Jack Walsh scored at the 4:31 mark to propel Gustavus to a 3-2 win over Augsburg on Dec. 1, 2012, Gavin Tuftte scored at 4:25 in the 4-3 win over UW-Stout earlier this season, and Conor Deal provided the game-winner at 4:51 on Saturday against Saint Mary's.

### TIES

With a 0-0 tie against St. Scholastica on Jan. 10, the Gustavus men's hockey team broke the program record for ties in a single season. The previous record of five draws was held by the 2011-12 team that went 17-7-5 and the 1989-90 team that went 20-6-5.

On Friday, Feb. 13, Gustavus skated to a 1-1 stalemate against St. Thomas for the team's eighth tie of the season. With eight on the year, the Gusties have broke the single season NCAA Division III tie record of seven held by UMass Dartmouth (12-8-7) in 2013, UW-Superior (19-3-7) in 2005, and UW-Stevens Point (13-13-7) in 1995. It is the most recorded ties by an MIAC team since St. Olaf went 13-9-6 during the 2011-12 campaign.

### CENTURY CLUB

A pair of Gustavus seniors reached a significant milestone in their collegiate careers at the end of January. By skating in the team's series against Saint John's, Jack Walsh and Andy Pearson both reached the 100 career games played mark. Heading into this weekend, Walsh has skated in 103 games, while Pearson has suited up in 102. They are the first Gusties to reach 100 since Adam Smyth '14 and Zach May '14 did so last season. Dating back to the seniors on the 2009-10 team, 11 Gusties have skated in 100 or more games.

To date, Walsh and Pearson, along with Alex Altenbernd and Jeremy Hepler of St. Thomas, and John Haeg of Saint John's are the only five current players in the MIAC who belong to the century club. Walsh and Altenbernd are the two most veteran players in the league with 103 games under their belts.

### MCLEAN EARNS MIAC WEEKLY HONOR

John McLean was recognized as the MIAC Athlete-of-the-Week for his performance in defending the Gustie net against St. Thomas last weekend. Thanks in large part to McLean's play, the Gusties kept their playoff hopes alive with a 1-1 tie (shootout win) and 3-1 victory against the MIAC-leading Tommies. McLean allowed just two goals all weekend, finishing with 30 saves in the series-opener and 36 saves top cap the weekend on the road Saturday night. It was the third and fourth times this season that McLean has made 30 or more saves. The junior is now 4-4-3 on the year and ranks third in NCAA Division III in save percentage at .941 and seventh in goals against average at 1.68.

### CLEAN SHEET

It's a note that has been tracked for four years but one that has never been publicly broadcast. It's a stat that you don't want to jinx and one that oftentimes generates unwarranted criticism of the individual's style of play. As this weekend's series is potentially the last in this senior's career, it is only fitting that credit is given where credit is due - despite the potential risk of a jinx. For four seasons beginning in 2011, the "penalty/minutes" category in 102 box scores has been blank next to No. 22 Andy Pearson. In the 102 games Pearson has skated in while donning a three-crowned sweater, not once has the forward been sent to the penalty box. Although his 5-10, 180-pound frame would suggest otherwise, Pearson is a grinder who is constantly on the boards, in the mix of puck battles, and causing havoc with his forecheck. Despite that physicality, he has never been charged with a penalty. Not once. A questionable trip, slight hold, or high stick have ever been called on the Burnsville product. There are no NCAA Division III records that track the fewest amount of penalties in a career, so we are left to speculate. No current player in the MIAC can boast such a claim, and within Gustavus men's hockey history, John Gambucci (1979-80) is the only skater to even justify a mention. Gambucci, however, played in 46 career games, 56 less than Pearson.

### KILLED OR BE KILLED

After giving up power play goals in back-to-back weekends against Saint Mary's and Saint John's, Gustavus has negated eight straight penalties over the past three games. The Gusties have led the MIAC on the penalty kill all season and now enter the final weekend of the regular season ranked second in the country 91.2-percent (62-68). It is Gustavus's best kill-rate since the turn of the century.

### SENIOR SEND OFF

As is tradition on the hill, the final home game of the regular season is designated as Senior Night and a special tribute is made to the individuals who have dedicated themselves to Gustavus hockey the past four years. This year, the athletics department, head coach Brett Petersen, parents, and fans salute the eight student-athletes who have represented the men's hockey program with pride and class throughout their collegiate careers. Student-athletes honored tonight for their years of commitment include Sam Smith (Vancouver, B.C.), Jack Walsh (Mahtomedi, Minn.), Tyler Lopic (New Prague, Minn.), Schyler Adams (New Prague, Minn.), Nate Paulsen (La Habra, Calif.), Andy Pearson (Burnsville, Minn.), Cory Ellis (St. Paul, Minn.) and Blake Schammel (Red Wing, Minn.). Entering the weekend, this group of Gustavus seniors has compiled a record of 57-30-20 overall and 33-17-12 in the MIAC. It has appeared in the MIAC Playoff Championship the past three seasons with a title coming in 2012 and a subsequent trip to the NCAA Tournament the same year.



# 2014-15 GUSTAVUS ADOLPHUS MEN'S HOCKEY GAME NOTES

## HEAD COACH BRETT PETERSEN

### 15th Season

**205-156-40 at Gustavus**

**Office: 507-933-7615**

**Email: bpeters4@gustavus.edu**



Brett Petersen is in his 15th season as the head coach of the Gustavus Adolphus men's hockey team.

The 2013-14 Gustavus men's hockey team posted its best finish in the conference standings since the 2009-10 season and made it back to the MIAC Playoff Championship for the third straight year after what was the team's seventh consecutive winning season. Gustavus finished second in the MIAC with 38 points after going 12-3-1 within conference play. After defeating Saint John's 3-2 in the MIAC Playoff Semifinals at Don Roberts Ice Rink, the Gusties saw their season end with a 2-1 loss to St. Thomas in front of a capacity crowd at the St. Thomas Ice Arena in the MIAC Playoff Championship. Head Coach Brett Petersen's club finished the year 16-7-4 overall, reaching the 15-win mark for the sixth straight season.

Gustavus had a strong showing in the MIAC's postseason awards last season with three players taking home all-conference honors. Gusties featured on the 20-player All-Conference Team included senior forward Corey Leivermann (North Mankato, Minn.), sophomore goaltender John McLean (Eagan, Minn.), and senior forward Adam Smyth (Burnsville, Minn.). Smyth earned all-conference marks for the second straight year, while Leivermann and McLean were both first time recipients. Corey Leivermann shared the MIAC scoring title after scoring 19 points off a league-leading 12 goals and seven assists inside conference play.

In his 15-plus seasons behind the Gustavus bench, Petersen has compiled a 205-156-40 overall record. His win total at Gustavus ranks second behind legendary coach Don Roberts. He has been named MIAC Coach of the Year twice, once in 2001-02 after helping the Gusties make the jump from ninth place the year before to a second place finish in the conference, and again in 2009-10 after leading the Gusties to their first MIAC Title since 1993. While at Gustavus, Petersen has worked with 18 All-Conference players, three MIAC Player of the Year recipients, eight AHCA All-Americans and one National Player of the Year (David Martinson, 2010).

Within MIAC play, Gustavus holds a record 128-83-27 during the Petersen era. The Gusties have earned a trip to the MIAC Playoffs 13 straight seasons and have advanced to the MIAC Playoff Championship a total of six times under Petersen. Since the turn of the century, Gustavus has qualified for the NCAA Division III Tournament three times in 2009, 2010, and 2012. The Gusties advanced all the way to the NCAA Championship in 2009 where they fell to Neumann 4-1 at Herb Brooks Arena in Lake Placid, N.Y.

Petersen, a Roseville, Minnesota native, started his coaching career with the St. Paul Vulcans of the United States Hockey League (USHL) from 1992-1994. He was named assistant coach at St. Cloud State University of the Western Collegiate Hockey Association (WCHA) in the spring of 1994. During his six years at St. Cloud State, he coordinated the recruiting process for head coach Craig Dahl, while also being closely involved with practice planning, player development and bench coaching.

In the classroom, Petersen received his Bachelor of Science degree in business administration from the University of Denver in 1992 and his Master of Science degree in athletic administration in 2000 from St. Cloud State. He was a four-year letter winner in hockey while at Denver and was named to the WCHA All-Academic team for three years. Petersen served as the team's assistant captain during his junior and senior seasons.

Petersen had the opportunity to represent USA Hockey on several difference occasions during his playing career including the U.S. Olympic Festival in Oklahoma City in 1990 and the World University Games in Sapporo, Japan in 1991. He was drafted by the Calgary Flames of the National Hockey League (NHL), but did not play professional hockey.

Along with this coaching duties at Gustavus, Petersen's responsibilities include managing Lund Arena, the College's multi-purpose facility that houses the ice sheet from October through March for team practices and games. The facility is then used for physical education classes, concerts and conventions the rest of the year.

Brett lives in St. Peter with his wife, Linda, and their daughters, Katherine and Natalie.

## THE PETERSEN FILE

Hometown	Coaching	Year	Overall	MIAC	Finish
• Roseville, Minnesota	• 1992-94 - Assistant Coach, St. Paul Vulcans (USHL)	2000-01	6-16-3	3-11-2	9th
		2001-02	14-9-4	9-4-4	2nd
<b>Education</b>	• 1994-00 - Assistant Coach, St. Cloud State (WCHA)	2002-03	14-12-1	8-7-1	4th
		2003-04	12-11-3	9-5-2	3rd
• Bachelor's Degree: Business Administration (Denver '92)	<b>Coaching Awards</b>	2004-05	10-14-1	7-8-1	T-5th
		2005-06	14-11-1	9-7-0	5th
• Master's Degree: Sport Administration (St. Cloud State '00)	• MIAC Coach of the Year - 2002, 2010	2006-07	11-13-2	9-6-1	5th
		2007-08	13-12-1	10-6-0	4th
<b>Family</b>	<b>NCAA Appearances</b>	2008-09	19-11-0	10-6-0	T-2nd
		2009-10	20-7-2	12-2-2	1st
• Wife, Linda; daughters Katherine and Natalie.	<b>MIAC Titles</b>	2010-11	15-10-2	8-6-2	T-4th
		2011-12	17-7-5	8-5-3	2nd
		2012-13	17-8-3	9-5-2	4th
		2013-14	16-7-4	12-3-1	2nd
		2014-15	7-8-8	4-4-6	
	• 2010	<b>TOTALS</b>	<b>205-156-40</b>	<b>128-83-27</b>	



## 2014-15 GUSTAVUS ADOLPHUS MEN'S HOCKEY GAME NOTES

### GAME 2014-15 GUSTAVUS TEAM SUPERLATIVES

**Largest Margin of Victory:** 3 (2x), most recent 3-0 win vs. Augsburg (Jan. 17)

**Largest Margin of Defeat:** 3 (2x), most recent 3-0 vs. Saint Mary's (Jan. 23)

**Most Goals, Game:** 6, 6-3 win vs. St. Olaf (Nov. 2)

**Most Goals, 1st Period:** 2 (2x), most recent 3-2 loss vs. Williams (Jan. 2)

**Most Goals, 2nd Period:** 3, 6-3 win vs. St. Olaf (Nov. 2)

**Most Goals, 3rd Period:** 3, 6-3 win vs. St. Olaf (Nov. 2)

**Most Goals Allowed, 1st Period:** 3, 4-2 loss vs. Bethel (Oct. 31)

**Most Goals Allowed, 2nd Period:** 2 (4x), most recent 4-2 loss vs. St. Olaf (Dec. 6)

**Most Goals Allowed, 3rd Period:** 3, 3-3 tie vs. Concordia (Nov. 15)

**Most Shots, Game:** 45 (3x), most recent 2-1 win vs. Saint Mary's (Jan. 24)

**Most Shots, 1st Period:** 17, 2-1 loss vs. Marian (Nov. 30)

**Most Shots, 2nd Period:** 19, 2-1 win vs. Saint Mary's (Jan. 24)

**Most Shots, 3rd Period:** 16, 4-2 loss vs. St. Olaf (Dec. 6)

**Most Shots, OT:** 7, 4-3 win vs. UW-Stout (Nov. 8)

**Most Shots Allowed, Game:** 39, 0-0 tie vs. St. Scholastica (Jan. 10)

**Most Shots Allowed, 1st Period:** 15, 3-2 loss vs. Williams (Jan. 2)

**Most Shots Allowed, 2nd Period:** 18, 2-1 win vs. Concordia (Nov. 14)

**Most Shots Allowed, 3rd Period:** 16, 0-0 tie vs. St. Scholastica (Jan. 10)

**Most Shots Allowed, OT:** 4, 3-3 tie vs. St. Olaf (Dec. 5)

**Fewest Shots, Game:** 15, 2-1 win vs. Concordia (Nov. 14)

**Fewest Shots, Regulation Period:** 3 (2x), second period of 2-1 win vs. Concordia (Nov. 14)

**Fewest Shots, 1st Period:** 4 (2x), most recent 3-3 tie vs. Concordia (Nov. 15)

**Fewest Shots, 2nd Period:** 3, 2-1 win vs. Concordia (Nov. 14)

**Fewest Shots, 3rd Period:** 4, 2-1 loss vs. Marina (Nov. 30)

**Fewest Shots, OT:** 0, 3-3 tie vs. Concordia (Nov. 15)

**Fewest Shots Allowed, Game:** 14, 4-2 win vs. Finlandia (Jan. 9)

**Fewest Shots Allowed, Regulation Period:** 2, first period of 2-1 win vs. Concordia (Nov. 14)

**Fewest Shots Allowed, 1st Period:** 2, 2-1 win vs. Concordia (Nov. 14)

**Fewest Shots Allowed, 2nd Period:** 6 (2x), 3-0 win vs. Augsburg (Jan. 17)

**Fewest Shots Allowed, 3rd Period:** 3, 3-3 tie vs. Lawrence (Nov. 29)

**Fewest Shots Allowed, OT:** 0 (2x), most recent 2-2 tie vs. Hamline (Nov. 22)

**Most PIM, Game:** 42, 4-3 win vs. UW-Stout (Nov. 8)

**Most Opponent PIM, Game:** 55, 4-3 win vs. UW-Stout (Nov. 8)

**Most Combined PIM:** 76, 4-3 win vs. UW-Stout (Nov. 8)

**Fewest PIM, Game:** 4 (3x), most recent 3-0 loss vs. Saint Mary's (Jan. 23)

**Fewest Opponent PIM, Game:** 2, 2-1 win vs. Concordia (Nov. 14)

**Fewest Combined PIM, Game:** 6, 2-1 win vs. Concordia (Nov. 14)

**Most PPG, Game:** 2, 5-3 loss vs. Augsburg (Jan. 16)

**Best PP, Game:** 3-4, 3-1 win vs. St. Thomas (Feb. 14)

**Most PP Opportunities, Game:** 5 (2x), most recent 4-2 loss vs. St. Olaf (Dec. 6)

**Best PK:** 5-5 (2x), most recent 0-0 tie vs. St. Scholastica (Jan. 10)

**Most Opponent PPG, Game:** 1 (6x), most recent 1-1 tie vs. Saint John's (Jan. 30)

**Most Opponent PP Opportunities, Game:** 5 (2x), most recent 0-0 tie vs. St. Scholastica (Jan. 10)

**Best Opponent PK:** 5-5 (2x), most recent 4-2 loss vs. St. Olaf (Dec. 6)



## 2014-15 GUSTAVUS ADOLPHUS MEN'S HOCKEY GAME NOTES

### 2014-15 GUSTAVUS MEN'S HOCKEY ROSTER

<u>NO.</u>	<u>NAME</u>	<u>YR</u>	<u>POS</u>	<u>HGT</u>	<u>WGT</u>	<u>HOMETOWN</u>	<u>HIGH SCHOOL</u>	<u>LAST TEAM</u>
1	John McLean	Jr.	G	6-8	220	Eagan, Minn.	Minehaha Academy	Wisconsin Wilderness (SIJHL)
2	Sam Smith	Sr.	D	5-11	205	Vancouver, B.C.	Flower Mound	Valley Jr. Warriors (EHL)
3	Jared Docken	So.	D	5-10	175	Northfield, Minn.	Northfield	Brookings Blizzard (NAHL)
4	Jack Walsh <sup>C</sup>	Sr.	F	6-3	200	Mahtomedi, Minn.	Mill-Murray	Austin Bruins (NAHL)
5	Drew Aspinwall	So.	D	6-1	195	Maple Grove, Minn.	Maple Grove	Fresno Monsters (NAHL)
6	Tyler Lopic <sup>C</sup>	Sr.	F	6-2	200	New Prague, Minn.	New Prague	Wisconsin (WCHA)
7	Schyler Adams	Sr.	F	5-9	185	New Prague, Minn.	New Prague	Owatonna Express (NAHL)
9	Jake McCann	Fr.	F	5-9	165	Shoreview, Minn.	Roseville	Minot Minotauros (NAHL)
10	Gavin Tufte	Jr.	F	6-0	220	Blaine, Minn.	Blaine	UW-Stout (WIAC)
11	Jake Bushey	Fr.	D	6-0	180	Duluth, Minn.	Duluth Marshall	Fairbanks Ice Dogs (NAHL)
12	Conor Deal	Fr.	F	5-11	185	Anchorage, Alaska	Polaris K-12 School	Kenai River Brown Bears (NAHL)
13	Cameron Jackson	So.	D	6-1	190	Lakeville, Minn.	Lakeville South	Fort Frances Lakers (SIJHL)
14	Tim Donohue	Fr.	F	5-11	195	Bloomington, Minn.	Jefferson	Minot Minotauros (NAHL)
15	Matt Petersen	So.	D	5-11	180	Center City, Minn.	Chisago Lakes	Granite City Lumberjacks (NA3HL)
16	Darren Lopic	Jr.	F	6-2	210	New Prague, Minn.	New Prague	Odessa Jackalopes (NAHL)
17	Sam Akins	So.	F	6-2	205	Stowe, Vt	Northwood	Dallas Ice Jets (WSHL)
18	Colin Hernon	Fr.	F	5-11	180	Bloomington, Minn.	Jefferson	Minnesota Magicians (NAHL)
19	Sam Majka	So.	F	6-0	190	Wayzata, Minn.	Wayzata	Coquitlam Express (BCHL)
20	Nate Paulsen	Sr.	D	6-2	195	La Habra, Calif.	La Habra	Wisconsin Wilderness (SIJHL)
21	Mason Wyman	So.	F	6-3	210	Burnsville, Minn.	Burnsville	Minnesota Flying Aces (NA3HL)
22	Andy Pearson	Sr.	F	5-10	180	Burnsville, Minn.	Burnsville	Alaska Avalanche (NAHL)
23	Blake Barnes	So.	D	5-11	175	Broken Arrow, Okla.	Shattuck-St. Mary's	Valley Jr. Warriors (EHL)
24	Cory Ellis	Sr.	F	6-2	215	St. Paul, Minn.	St. Paul Johnson	Austin Bruins (NAHL)
25	Ross Kovacs	So.	D	6-3	215	Dickinson, N.D.	Dickinson	Hawkesbury Hawks (CCHL)
26	Blake Schammel	Sr.	F	5-10	190	Red Wing, Minn.	Red Wing	Bismarck Bobcats (NAHL)
27	Joncarlo Westerlund	So.	F	5-11	185	Baudette, Minn.	Lake of the Woods	Dallas Ice Jets (WSHL)
30	Isaak Tjaden	Fr.	G	5-9	155	Eagan, Minn.	Northfield	Billings Bulls (AWHL)
35	Erik Johnson	So.	G	6-1	180	Rice, Minn.	Sauk Rapids-Rice	Rochester Ice Hawks (MNJHL)

**HEAD COACH:** Brett Petersen (15th Season)

**ASSISTANT COACH:** David Martinson

**C:** Denotes Captain



# 2014-15 GUSTAVUS ADOLPHUS MEN'S HOCKEY GAME NOTES

## 2014-15 GUSTAVUS MEN'S HOCKEY PRONUNCIATION GUIDE



**FRONT ROW (L TO R)** | Erik Johnson, Andy Pearson, Sam Smith, Nate Paulsen, Tyler Lopic, Jack Walsh, Cory Ellis, Blake Schammel, Schyler Adams, John McLean

**SECOND ROW (L TO R)** | Head Coach Brett Petersen, Cameron Jackson, Darren Lopic, Ross Kovacs, Mason Wyman, Sam Akins, Gavin Tufte, Drew Aspinwall, Sam Majka, Isaak Tjaden, Assistant Coach David Martinson

**TOP ROW (L TO R)** | Student Manager Andy Regner, Jake McCann, Joncarlo Westerlund, Coin Hernon, Blake Barnes, Jake Bushey, Tim Donohue, Matt Petersen, Conor Deal, Jared Docken

### PRONUNCIATION GUIDE

7	Schyler Adams (SKY-ler)	19	Sam Majka (MAY-kuh)
10	Gavin Tufte (TUFF-tee)	21	Mason Wyman (WHY-man)
11	Jake Bushey (BUSH-ie)	25	Ross Kovacs (COE-vacks)
14	Tim Donohue (DONNA-hue)	26	Blake Schammel (SHAM-el)
17	Sam Akins (A (as in acorn)-kins)	30	Isaak Tjaden (CHAY-den)
25	Ross Kovacs (COE-vacks)		(CH as in church)



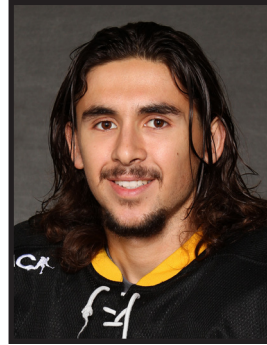


## 2014-15 GUSTAVUS ADOLPHUS MEN'S HOCKEY GAME NOTES

### 2014-15 INDIVIDUAL GAME HIGHS



**No. 1**  
John McLean  
**Fewest Goals:** 0 (2x), last Jan. 17 vs. Augsburg  
**Most Saves:** 39, Jan. 10 vs. St. Scholastica  
**Most Minutes:** 65 (3x), last Feb. 13 vs. St. Thomas  
**Winning-Streak:** 1



**No. 5**  
Drew Aspinwall  
**Goals:** 1 (2x), last Dec. 5 vs. St. Olaf  
**Assists:** 2, Nov. 2 vs. St. Olaf  
**Points:** 2, Nov. 2 vs. St. Olaf  
**Plus/Minus:** +2, Jan. 17 vs. Augsburg  
**PIM:** 2 (3x), last Feb. 13 vs. St. Thomas  
**Shots On Goal:** 7, Jan. 31 vs. Saint John's



**No. 2**  
Sam Smith  
**Goals:** N/A  
**Assists:** 1 (3x), last Jan. 13 vs. St. Thomas  
**Points:** 1 (3x), last Jan. 13 vs. St. Thomas  
**Plus/Minus:** +2, Nov. 8 vs. UW-Stout  
**PIM:** 2 (7x), last Jan. 24 vs. Saint Mary's  
**Shots On Goal:** 4, Nov. 29 vs. Lawrence



**No. 6**  
Tyler Lopic  
**Goals:** 2, Nov. 22 vs. Hamline  
**Assists:** 1 (5x), last Feb. 14 vs. St. Thomas  
**Points:** 2, Nov. 22 vs. Hamline  
**Plus/Minus:** +1 (5x), last Jan. 24 vs. Saint Mary's  
**PIM:** 4 (2x), last Jan. 2 vs. Williams  
**Shots On Goal:** 6 (2x), Nov. 22 vs. Hamline  
last Jan. 24 vs. Saint Mary's



**No. 3**  
Jared Docken  
**Goals:** 1, Feb. 14 vs. St. Thomas  
**Assists:** 1 (4x), last Jan. 31 vs. Saint John's  
**Points:** 1 (5x), last Feb. 14 vs. St. Thomas  
**Plus/Minus:** +1 (5x), last Jan. 17 vs. Augsburg  
**PIM:** 2, Nov. 7 vs. UW-Stevens Point  
**Shots On Goal:** 4, Nov. 8 vs. UW-Stout



**No. 7**  
Schyler Adams  
**Goals:** 1 (2x), last Jan. 31 vs. Saint John's  
**Assists:** 1 (4x), last Jan. 31 vs. Saint John's  
**Points:** 2, Jan. 31 vs. Saint John's  
**Plus/Minus:** +2 (2x), last Jan. 31 vs. Saint John's  
**PIM:** 2, Jan. 30 vs. Saint John's  
**Shots On Goal:** 4 (4x), last Jan. 17 vs. Augsburg



**No. 4**  
Jack Walsh  
**Goals:** 1 (3x), last Jan. 30 vs. Saint John's  
**Assists:** 3, Dec. 5 vs. St. Olaf  
**Points:** 3, Dec. 5 vs. St. Olaf  
**Plus/Minus:** +1 (5x), Jan. 30 vs. Saint John's  
**PIM:** 2 (8x), last Jan. 24 vs. Saint Mary's  
**Shots On Goal:** 4 (4x), last Feb. 14 vs. St. Thomas



**No. 9**  
Jake McCann  
**Goals:** 1, Nov. 29 vs. Lawrence  
**Assists:** 1 (3x), last Jan. 17 vs. Augsburg  
**Points:** 2, Nov. 29 vs. Lawrence  
**Plus/Minus:** +2, Nov. 29 vs. Lawrence  
**PIM:** 2 (2x), last Nov. 14 vs. Concordia  
**Shots On Goal:** 3, Nov. 29 vs. Lawrence



## 2014-15 GUSTAVUS ADOLPHUS MEN'S HOCKEY GAME NOTES

### 2014-15 INDIVIDUAL GAME HIGHS



#### **No. 10**

Gavin Tufte

**Goals:** 1 (4x), last Jan. 9 vs. Finlandia

**Assists:** 1 (3x), last Dec. 6 vs. St. Olaf

**Points:** 2, Nov. 2 vs. St. Olaf

**Plus/Minus:** +2 (2x), last Jan. 9 vs. Finlandia

**PIM:** 2 (2x), last Dec. 6 vs. St. Olaf

**Shots On Goal:** 4 (2x), Nov. 8 vs. UW-Stout



#### **No. 14**

Tim Donohue

**Goals:** N/A

**Assists:** 2, Nov. 15 vs. Concordia

**Points:** 2, Nov. 15 vs. Concordia

**Plus/Minus:** +2 (3x), last Jan. 9 vs. Finlandia

**PIM:** 4 (2x), last Feb. 14 vs. St. Thomas

**Shots On Goal:** 4 (3x), last Dec. 5 vs. St. Olaf



#### **No. 11**

Jake Bushey

**Goals:** 2, Nov. 2 vs. St. Olaf

**Assists:** 2 (2x), last Feb. 14 vs. St. Thomas

**Points:** 3 (2x), last Jan. 16 vs. Augsburg

**Plus/Minus:** +2, Jan. 17 vs. Augsburg

**PIM:** 15, Nov. 8 vs. UW-Stout

**Shots On Goal:** 5 (3x), last Jan. 31 vs. Saint John's



#### **No. 15**

Matt Petersen

**Goals:** N/A

**Assists:** N/A

**Points:** N/A

**Plus/Minus:** N/A

**PIM:** N/A

**Shots On Goal:** N/A



#### **No. 12**

Conor Deal

**Goals:** 2, Jan. 9 vs. Finlandia

**Assists:** 2 (3x), last Feb. 14 vs. St. Thomas

**Points:** 3 (2x), last Jan. 16 vs. Augsburg

**Plus/Minus:** +3, Jan. 9 vs. Finlandia

**PIM:** 2 (4x), last Jan. 24 vs. Saint Mary's

**Shots On Goal:** 6, Jan. 17 vs. Augsburg



#### **No. 16**

Darren Lopic

**Goals:** 1 (4x), last Feb. 13 vs. St. Thomas

**Assists:** 1 (3x), last Jan. 30 vs. Saint John's

**Points:** 1 (7x), last Feb. 13 vs. St. Thomas

**Plus/Minus:** +2, Jan. 31 vs. Saint John's

**PIM:** 15, Nov. 8 vs. UW-Stout

**Shots On Goal:** 8, Jan. 10 vs. St. Scholastica



#### **No. 13**

Cameron Jackson

**Goals:** 1, Nov. 2 vs. St. Olaf

**Assists:** 1, Nov. 14 vs. Concordia

**Points:** 1 (2x), last Nov. 14 vs. Concordia

**Plus/Minus:** +3, Nov. 2 vs. St. Olaf

**PIM:** 2, Dec. 6 vs. St. Olaf

**Shots On Goal:** 2 (4x), last Nov. 29 vs. Lawrence



#### **No. 17**

Sam Akins

**Goals:** N/A

**Assists:** N/A

**Points:** N/A

**Plus/Minus:** +1, Nov. 2 vs. St. Olaf

**PIM:** N/A

**Shots On Goal:** 2, Nov. 2 vs. St. Olaf

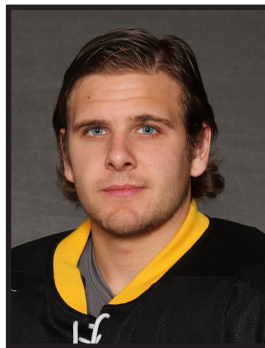


## 2014-15 GUSTAVUS ADOLPHUS MEN'S HOCKEY GAME NOTES

### 2014-15 INDIVIDUAL GAME HIGHS



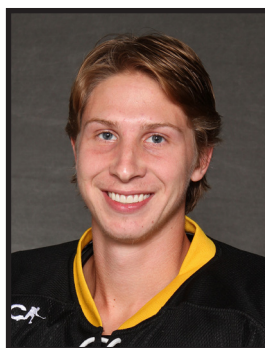
**No. 18**  
Colin Hernon  
**Goals:** 1, Nov. 2 vs. St. Olaf  
**Assists:** N/A  
**Points:** 1, Nov. 2 vs. St. Olaf  
**Plus/Minus:** +2, Jan. 9 vs. Finlandia  
**PIM:** 2, Nov. 21 vs. Hamline  
**Shots On Goal:** 5 (2x), last Jan. 23 vs. Saint Mary's



**No. 22**  
Andy Pearson  
**Goals:** 1 (3x), last Dec. 6 vs. St. Olaf  
**Assists:** 1 (5x), last Nov. 29 vs. Lawrence  
**Points:** 2, Nov. 29 vs. Lawrence  
**Plus/Minus:** +3, Nov. 2 vs. St. Olaf  
**PIM:** N/A  
**Shots On Goal:** 6, Nov. 29 vs. Lawrence



**No. 19**  
Sam Majka  
**Goals:** 2, Feb. 14 vs. St. Thomas  
**Assists:** 1 (2x), Jan. 17 vs. Augsburg  
**Points:** 2, Feb. 14 vs. St. Thomas  
**Plus/Minus:** +1 (3x), last Jan. 17 vs. Augsburg  
**PIM:** 2 (4x), last Jan. 31 vs. Saint John's  
**Shots On Goal:** 5, Jan. 24 vs. Saint Mary's



**No. 23**  
Blake Barnes  
**Goals:** N/A  
**Assists:** 1, Jan. 9 vs. Finlandia  
**Points:** 1, Jan. 9 vs. Finlandia  
**Plus/Minus:** +2, Jan. 9 vs. Finlandia  
**PIM:** 2 (2x), last Jan. 9 vs. Finlandia  
**Shots On Goal:** 1 (3x), last Nov. 30 vs. Marian



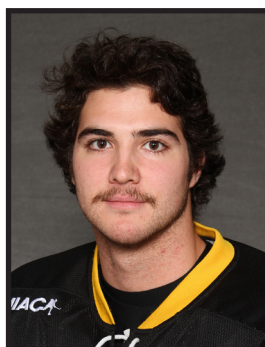
**No. 20**  
Nate Paulsen  
**Goals:** 1, Jan. 9 vs. Finlandia  
**Assists:** 1, Jan. 9 vs. Finlandia  
**Points:** 2, Jan. 9 vs. Finlandia  
**Plus/Minus:** +2, Jan. 9 vs. Finlandia  
**PIM:** 2 (2x), last Jan. 31 vs. Saint John's  
**Shots On Goal:** 6, Feb. 14 vs. St. Thomas



**No. 24**  
Cory Ellis  
**Goals:** 1, Dec. 5 vs. St. Olaf  
**Assists:** 1 (7x), last Jan. 31 vs. Saint John's  
**Points:** 2, Dec. 5 vs. St. Olaf  
**Plus/Minus:** +2 (2x), last Jan. 31 vs. Saint John's  
**PIM:** 2, Dec. 6 vs. St. Olaf  
**Shots On Goal:** 4, Dec. 5 vs. St. Olaf



**No. 21**  
Mason Wyman  
**Goals:** N/A  
**Assists:** N/A  
**Points:** N/A  
**Plus/Minus:** 0 (3x), last Jan. 31 vs. Saint John's  
**PIM:** 2, Nov. 15 vs. Concordia  
**Shots On Goal:** 2, Oct. 31 vs. Bethel

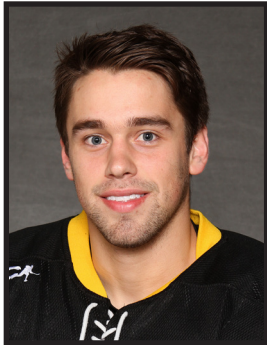


**No. 25**  
Ross Kovacs  
**Goals:** N/A  
**Assists:** N/A  
**Points:** N/A  
**Plus/Minus:** +1 (3x), last Nov. 21 vs. Hamline  
**PIM:** 4, Dec. 6 vs. St. Olaf  
**Shots On Goal:** 2 (3x), last Nov. 21 vs. Hamline



# 2014-15 GUSTAVUS ADOLPHUS MEN'S HOCKEY GAME NOTES

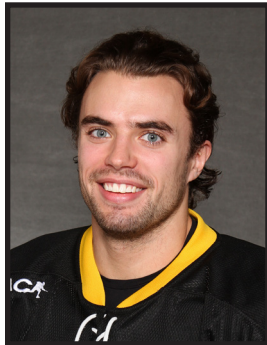
## 2014-15 INDIVIDUAL GAME HIGHS



**No. 26**  
 Blake Schammel  
**Goals:** 2, Nov. 15 vs. Concordia  
**Assists:** 1 (4x), last Feb. 14 vs. St. Thomas  
**Points:** 3, Nov. 15 vs. Concordia  
**Plus/Minus:** +2 (2x), last Jan. 2 vs. Williams  
**PIM:** 2 (3x), last Nov. 30 vs. Marian  
**Shots On Goal:** 6 (2x), Nov. 21 vs. Hamline



**No. 30**  
 Isaak Tjaden  
**Fewest Goals:** 2, Nov. 30 vs. Marian  
**Most Saves:** 21, Nov. 30 vs. Marian  
**Most Minutes:** 58:58, Nov. 30 vs. Marian  
**Winning-Streak:** N/A



**No. 27**  
 Joncarlo Westerlund  
**Goals:** 1, Nov. 21 vs Hamline  
**Assists:** 1, Nov. 22 vs Hamline  
**Points:** 1 (2x), last Nov. 22 vs Hamline  
**Plus/Minus:** +1 (2x), last Nov. 22 vs. Hamline  
**PIM:** N/A  
**Shots On Goal:** 3 (2x), last Dec. 6 vs. St. Olaf



**No. 35**  
 Erik Johnson  
**Fewest Goals:** 1, Nov. 14 vs. Concordia  
**Most Saves:** 32, Nov. 8 vs. UW-Stout  
**Most Minutes:** 65:00 (5x), last Dec. 5 vs. St. Olaf  
**Winning-Streak:** 1





# 2014-15 GUSTAVUS ADOLPHUS MEN'S HOCKEY GAME NOTES

## 2014-15 COMBINED STATISTICS

### Gustavus Adolphus Hockey Gustavus Adolphus Combined Team Statistics (as of Feb 19, 2015) All games

Date	Opponent	Score	Att.
Oct 31	vs Bethel University	L 2-4	300
Nov 02	vs St. Olaf College	W 6-3	100
Nov 07	#2 UW-STEVENS POINT	L 1-4	515
Nov 08	UW-STOUT	Wot 4-3	535
* Nov 14	at Concordia-M'head	W 2-1	317
* Nov 15	at Concordia-M'head	To2 3-3	253
* Nov 21	at Hamline	Tot 3-3	475
* Nov 22	HAMLIN	To2 2-2	541
Nov 29	LAWRENCE	Tot 3-3	234
Nov 30	MARIAN	L 1-2	186
* Dec 05	ST. OLAF COLLEGE	Tot 3-3	502
* Dec 06	at St. Olaf College	L 2-4	492
Jan 02	#14 WILLIAMS COLLEGE	L 2-3	197
Jan 09	FINLANDIA UNIVERSITY	W 4-2	357
Jan 10	ST. SCHOLASTICA	Tot 0-0	359
* 01/16/15	at Augsburg College	L 3-5	417
* Jan 17	AUGSBURG COLLEGE	W 3-0	407
* Jan 23	at Saint Mary's	L 0-3	317
* Jan 24	SAINT MARY'S	Wot 2-1	403
* Jan 30	at Saint John's Univ.	Tot 1-1	773
* Jan 31	SAINT JOHN'S UNIV.	L 2-3	241
* Feb 13	ST. THOMAS	To2 1-1	561
* Feb 14	at UST-MEN	W 3-1	275

#### TEAM STATISTICS

##### SHOT STATISTICS

	GAC	OPP
Goals-Shot attempts	53-758	55-667
Shot pct.	.070	.082
Goals/Game	2.3	2.4
Shots/Game	33.0	29.0

##### POWER PLAYS

	GAC	OPP
Goals-Power Plays	13-65	5-64
Conversion Percent	.200	.078
Shot Attempts	95	93
Shot Percent	.137	.054

##### SHORT-HANDED

	GAC	OPP
Goals-Shot attempts	2-14	6-23
Shot Percent	.143	.261

##### GOAL BREAKDOWN

	GAC	OPP
Power Play	13	5
Short-handed	2	6
Empty net	2	2
Penalty	0	0
Unassisted	2	5
Overtime	2	0
Shootout	0	0
Delayed Penalty	0	0

##### PENALTIES

	GAC	OPP
Number	92	94
Minutes	206	251
Penalties/Game	4.0	4.1
Pen minutes/Game	9.0	10.9
FACEOFFS (W-L)	805-748	748-805
Faceoff W-L Pct.	.518	.482
SHOOTOUTS (Made-Att)	6-20	7-20

Record:	Overall	Home	Away	Neutral
ALL GAMES	7-8-8	4-4-5	2-3-3	1-1-0
CONFERENCE	4-4-6	2-1-3	2-3-3	0-0-0
NON-CONFERENCE	3-4-2	2-3-2	0-0-0	1-1-0

#	Player	gp	g	a	pts	sh	sh%	pen-min	pp	sh
12	Conor Deal	23	9	9	18	65	.138	4-8	1	0
11	Jake Bushy	22	5	9	14	43	.116	6-23	3	0
26	Blake Schammel	22	6	4	10	50	.120	3-6	3	0
6	Tyler Lopic	21	4	5	9	60	.067	11-22	1	1
22	Andy Pearson	23	3	5	8	52	.058	0-0	0	0
24	Cory Ellis	22	1	7	8	27	.037	1-2	0	0
16	Darren Lopic	21	4	3	7	60	.067	12-35	1	0
10	Gavin Tufte	16	4	3	7	31	.129	2-4	0	0
4	Jack Walsh	23	3	4	7	41	.073	9-18	0	0
7	Schyler Adams	16	2	5	7	25	.080	1-2	0	0
5	Drew Aspinwall	23	2	5	7	46	.043	3-6	1	1
14	Tim Donohue	23	0	7	7	38	.000	14-28	0	0
19	Sam Majka	20	3	2	5	53	.057	4-8	2	0
3	Jared Docken	23	1	4	5	23	.043	2-4	1	0
9	Jake McCann	14	1	3	4	11	.091	2-4	0	0
2	Sam Smith	23	0	3	3	27	.000	7-14	0	0
13	Cameron Jackson	13	2	0	2	12	.167	1-2	0	0
20	Nate Paulsen	11	1	1	2	33	.030	2-4	0	0
27	Joncarlo Westerlund	10	1	1	2	12	.083	0-0	0	0
18	Colin Hernon	15	1	0	1	30	.033	1-2	0	0
23	Blake Barnes	7	0	1	1	3	.000	2-4	0	0
17	Sam Akins	3	0	0	0	3	.000	0-0	0	0
25	Ross Kovacs	17	0	0	0	11	.000	4-8	0	0
21	Mason Wyman	5	0	0	0	2	.000	1-2	0	0
Total		23	53	81	134	758	.070	92-206	13	2
Opponents		23	55	80	135	667	.082	94-251	5	6

#	Goalie	gp	min	ga	gaavg	saves	save%	w-l-t
1	John McLean	11	681:40	19	1.67	304	.941	4-4-3
30	Isaak Tjaden	1	58:58	2	2.04	21	.913	0-1-0
35	Erik Johnson	12	684:41	32	2.80	287	.900	3-3-4
TM	EMPTY NET	7	8:57	2	-	0	.000	0-0-0
Total		23	1434:16	55	2.30	612	.918	7-8-7
Opponents		23	1434:16	53	2.22	705	.930	8-7-7

Attendance Summary	GAC	Opponent
Total	5038	3319
Dates/Avg Per Date	13/388	8/415
Neutral Site #/Avg	2/200	

Goals by Period	1st	2nd	3rd	OT	Total
Gustavus Adolphus	15	19	17	2	53
Opponents	21	14	20	0	55

Shots by Period	1st	2nd	3rd	OT	Total
Gustavus Adolphus	232	264	232	30	758
Opponents	215	240	195	17	667

Saves by Period	1st	2nd	3rd	OT	Total
Gustavus Adolphus	194	226	175	17	612
Opponents	217	245	215	28	705



# 2014-15 GUSTAVUS ADOLPHUS MEN'S HOCKEY GAME NOTES

## 2014-15 TEAM STATISTICS

### Gustavus Adolphus Hockey Gustavus Adolphus Overall Team Statistics (as of Feb 19, 2015) All games

Overall: 7-8-8 Conf: 4-4-6 Home: 4-4-5 Away: 2-3-3 Neut: 1-1-0

TEAM STATISTICS	GAC	OPP
<b>SHOT STATISTICS</b>		
Goals-Shot attempts	53-758	55-667
Shot pct.	.070	.082
Goals/Game	2.3	2.4
Shots/Game	33.0	29.0
Assists	81	80
<b>POWER PLAYS</b>		
Goals-Power Plays	13-65	5-64
Conversion Percent	.200	.078
Shot Attempts	95	93
Shot Percent	.137	.054
<b>SHORT-HANDED</b>		
Goals-Shot attempts	2-14	6-23
Shot Percent	.143	.261
<b>GOAL BREAKDOWN</b>		
Total Goals	53	55
Power Play	13	5
Short-handed	2	6
Empty net	2	2
Penalty	0	0
Unassisted	2	5
Overtime	2	0
Shootout	0	0
Delayed Penalty	0	0
<b>PENALTIES</b>		
Number	92	94
Minutes	206	251
Penalties/Game	4.0	4.1
Pen minutes/Game	9.0	10.9
Minor	88	83
Major	2	5
10-minute Misconduct	0	1
Game Misconduct	0	2
Gross Misconduct	0	0
Match	2	3
FACEOFFS (W-L)	805-748	748-805
Faceoff W-L Pct.	.518	.482
SHOOTOUTS (Made-Att)	6-20	7-20
<b>ATTENDANCE</b>		
Total	5038	3319
Dates/Avg Per Date	13/388	8/415
Neutral Site #/Avg	2/200	

Goals by Period	1st	2nd	3rd	OT	Total
Gustavus Adolphus	15	19	17	2	53
Opponents	21	14	20	0	55

Shots by Period	1st	2nd	3rd	OT	Total
Gustavus Adolphus	232	264	232	30	758
Opponents	215	240	195	17	667

Saves by Period	1st	2nd	3rd	OT	Total
Gustavus Adolphus	194	226	175	17	612
Opponents	217	245	215	28	705



# 2014-15 GUSTAVUS ADOLPHUS MEN'S HOCKEY GAME NOTES

## 2014-15 INDIVIDUAL STATISTICS

### Gustavus Adolphus Hockey Gustavus Adolphus Overall Individual Statistics (as of Feb 19, 2015) All games

Overall: 7-8-8 Conf: 4-4-6 Home: 4-4-5 Away: 2-3-3 Neut: 1-1-0

##	Player	gp	Shots					+-	Penalties				Goals								
			g	a	pts	sh	sh%		pen-min	min	maj	oth	pp	sh	fg	gw	gt	ot	ht	pn	ua
12	Conor Deal	23	9	9	18	65	.138	0	4-8	4	0	0	1	0	2	3	0	1	0	0	1
11	Jake Bushey	22	5	9	14	43	.116	-6	6-23	4	1	1	3	0	0	0	0	0	0	0	0
26	Blake Schammel	22	6	4	10	50	.120	-4	3-6	3	0	0	3	0	0	0	0	0	0	0	0
6	Tyler Lopic	21	4	5	9	60	.067	-8	11-22	11	0	0	1	1	1	0	0	0	0	0	0
22	Andy Pearson	23	3	5	8	52	.058	-5	0-0	0	0	0	0	0	0	0	1	0	0	0	0
24	Cory Ellis	22	1	7	8	27	.037	+2	1-2	1	0	0	0	0	0	0	0	0	0	0	0
16	Darren Lopic	21	4	3	7	60	.067	-3	12-35	10	1	1	1	0	1	1	1	0	0	0	0
10	Gavin Tufte	16	4	3	7	31	.129	-1	2-4	2	0	0	0	0	0	1	0	1	0	0	0
4	Jack Walsh	23	3	4	7	41	.073	-4	9-18	9	0	0	0	0	1	0	0	0	0	0	0
7	Schlyer Adams	16	2	5	7	25	.080	+3	1-2	1	0	0	0	0	0	0	0	0	0	0	0
5	Drew Aspinwall	23	2	5	7	46	.043	-3	3-6	3	0	0	1	1	0	0	0	0	0	0	1
14	Tim Donohue	23	0	7	7	38	.000	+2	14-28	14	0	0	0	0	0	0	0	0	0	0	0
19	Sam Majka	20	3	2	5	53	.057	-4	4-8	4	0	0	2	0	2	1	0	0	0	0	0
3	Jared Docken	23	1	4	5	23	.043	-5	2-4	2	0	0	1	0	0	0	0	0	0	0	0
9	Jake McCann	14	1	3	4	11	.091	0	2-4	2	0	0	0	0	1	0	0	0	0	0	0
2	Sam Smith	23	0	3	3	27	.000	-3	7-14	7	0	0	0	0	0	0	0	0	0	0	0
13	Cameron Jackson	13	2	0	2	12	.167	+4	1-2	1	0	0	0	0	1	1	0	0	0	0	0
20	Nate Paulsen	11	1	1	2	33	.030	0	2-4	2	0	0	0	0	0	0	0	0	0	0	0
27	Joncarlo Westerlund	10	1	1	2	12	.083	+1	0-0	0	0	0	0	0	0	0	1	0	0	0	0
18	Colin Herson	15	1	0	1	30	.033	0	1-2	1	0	0	0	0	0	0	0	0	0	0	0
23	Blake Barnes	7	0	1	1	3	.000	-4	2-4	2	0	0	0	0	0	0	0	0	0	0	0
17	Sam Akins	3	0	0	0	3	.000	-1	0-0	0	0	0	0	0	0	0	0	0	0	0	0
25	Ross Kovacs	17	0	0	0	11	.000	-2	4-8	4	0	0	0	0	0	0	0	0	0	0	0
21	Mason Wyman	5	0	0	0	2	.000	-3	1-2	1	0	0	0	0	0	0	0	0	0	0	0
Total		23	53	81	134	758	.070	-44	92-206	88	2	2	13	2	9	7	3	2	0	0	2
Opponents		23	55	80	135	667	.082	-	94-251	83	5	6	5	6	13	8	4	0	0	0	5

##	Goalie	gp-gs	Goal average			Saves		Record				Goals allowed				
			minutes	ga	avg	saves	pct	w	l	t	sho	pp	sh	en	pen	sog
1	John McLean	11-11	681:40	19	1.67	304	.941	4	4	3	2	3	1	0	0	0
30	Isaak Tjaden	1-1	58:58	2	2.04	21	.913	0	1	0	0	0	0	0	0	0
35	Erik Johnson	12-11	684:41	32	2.80	287	.900	3	3	4	0	2	5	0	0	0
TM	EMPTY NET	7-0	8:57	2	-	0	.000	0	0	0	0	0	0	2	0	0
Total		23-0	1434:16	55	2.30	612	.918	7	8	7	2	5	6	2	0	0
Opponents		23-0	1434:16	53	2.22	705	.930	8	7	7	2	13	2	2	0	0



# 2014-15 GUSTAVUS ADOLPHUS MEN'S HOCKEY GAME NOTES

## 2014-15 CATEGORY LEADERS

### Gustavus Adolphus Hockey Gustavus Adolphus Category Leaders (as of Feb 19, 2015) All games

##	Points	GP	G	A	Pts	Sh
12	Conor Deal	23	9	9	18	65
11	Jake Bushey	22	5	9	14	43
26	Blake Schammel	22	6	4	10	50
6	Tyler Lopic	21	4	5	9	60
22	Andy Pearson	23	3	5	8	52
24	Cory Ellis	22	1	7	8	27
16	Darren Lopic	21	4	3	7	60
10	Gavin Tufte	16	4	3	7	31
4	Jack Walsh	23	3	4	7	41
7	Schlyer Adams	16	2	5	7	25

##	Goals	GP	G	A	Pts	Sh
12	Conor Deal	23	9	9	18	65
26	Blake Schammel	22	6	4	10	50
11	Jake Bushey	22	5	9	14	43
6	Tyler Lopic	21	4	5	9	60
16	Darren Lopic	21	4	3	7	60
10	Gavin Tufte	16	4	3	7	31
22	Andy Pearson	23	3	5	8	52
4	Jack Walsh	23	3	4	7	41
19	Sam Majka	20	3	2	5	53
7	Schlyer Adams	16	2	5	7	25

##	Power-Play Goals	GP	PPG
26	Blake Schammel	22	3
11	Jake Bushey	22	3
19	Sam Majka	20	2

##	Short-Handed Goals	GP	SHG
5	Drew Aspinwall	23	1
6	Tyler Lopic	21	1

##	Game-Winning Goals	GP	GWG
12	Conor Deal	23	3

##	Plus/Minus	GP	+/-
13	Cameron Jackson	13	+4
7	Schlyer Adams	16	+3
14	Tim Donohue	23	+2
24	Cory Ellis	22	+2
27	Joncarlo Westerlund	10	+1

##	Assists	GP	G	A	Pts	Sh
12	Conor Deal	23	9	9	18	65
11	Jake Bushey	22	5	9	14	43
24	Cory Ellis	22	1	7	8	27
14	Tim Donohue	23	0	7	7	38
6	Tyler Lopic	21	4	5	9	60
22	Andy Pearson	23	3	5	8	52
7	Schlyer Adams	16	2	5	7	25
5	Drew Aspinwall	23	2	5	7	46
26	Blake Schammel	22	6	4	10	50
4	Jack Walsh	23	3	4	7	41

##	Shots	GP	G	A	Pts	Sh	Sh%
12	Conor Deal	23	9	9	18	65	.138
6	Tyler Lopic	21	4	5	9	60	.067
16	Darren Lopic	21	4	3	7	60	.067
19	Sam Majka	20	3	2	5	53	.057
22	Andy Pearson	23	3	5	8	52	.058
26	Blake Schammel	22	6	4	10	50	.120
5	Drew Aspinwall	23	2	5	7	46	.043
11	Jake Bushey	22	5	9	14	43	.116
4	Jack Walsh	23	3	4	7	41	.073
14	Tim Donohue	23	0	7	7	38	.000

##	Shot Pct.	GP	G	A	Pts	Sh	Sh%
13	Cameron Jackson	13	2	0	2	12	.167
12	Conor Deal	23	9	9	18	65	.138
10	Gavin Tufte	16	4	3	7	31	.129
26	Blake Schammel	22	6	4	10	50	.120
11	Jake Bushey	22	5	9	14	43	.116
9	Jake McCann	14	1	3	4	11	.091
27	Joncarlo Westerlund	10	1	1	2	12	.083
7	Schlyer Adams	16	2	5	7	25	.080
4	Jack Walsh	23	3	4	7	41	.073
6	Tyler Lopic	21	4	5	9	60	.067

##	Penalties	GP	Pen	Min
14	Tim Donohue	23	14	28
16	Darren Lopic	21	12	35
6	Tyler Lopic	21	11	22
4	Jack Walsh	23	9	18
2	Sam Smith	23	7	14
11	Jake Bushey	22	6	23
19	Sam Majka	20	4	8
25	Ross Kovacs	17	4	8
12	Conor Deal	23	4	8
26	Blake Schammel	22	3	6

##	Penalty Minutes	GP	Pen	Min
16	Darren Lopic	21	12	35
14	Tim Donohue	23	14	28
11	Jake Bushey	22	6	23
6	Tyler Lopic	21	11	22
4	Jack Walsh	23	9	18
2	Sam Smith	23	7	14
19	Sam Majka	20	4	8
25	Ross Kovacs	17	4	8
12	Conor Deal	23	4	8
26	Blake Schammel	22	3	6





# 2014-15 GUSTAVUS ADOLPHUS MEN'S HOCKEY GAME NOTES

## 2014-15 GOALS-ASSISTS-POINTS

### Gustavus Adolphus Hockey Gustavus Adolphus Game-by-Game Goals-Assists-Points (as of Feb 19, 2015) All games

Opponent	Date	Score	Player											
			1	2	3	4	5	6	7	9	10	11	12	
vs BU	Oct 31	2-4 L	DNP	0-0-0	0-0-0	0-0-0	0-0-0	0-0-0	0-0-0	DNP	DNP	0-0-0	0-0-0	1-0-1
vs STO	Nov 02	6-3 W	DNP	0-0-0	0-0-0	0-0-0	0-0-0	0-2-2	0-1-1	DNP	0-1-1	1-1-2	2-1-3	0-1-1
UWSP	Nov 07	1-4 L	DNP	0-0-0	0-0-0	0-1-1	0-0-0	0-0-0	0-0-0	DNP	0-0-0	0-0-0	1-0-1	0-0-0
STOUT	Nov 08	4-3 W	DNP	0-0-0	0-1-1	0-0-0	1-0-1	1-1-2	1-1-2	DNP	0-0-0	1-0-1	1-0-1	0-0-0
at CC	Nov 14	2-1 W	DNP	0-0-0	0-0-0	0-0-0	0-0-0	0-0-0	0-0-0	DNP	0-0-0	0-0-0	DNP	1-0-1
at CC	Nov 15	3-3 t	DNP	0-0-0	0-0-0	0-0-0	0-0-0	0-0-0	0-0-0	DNP	0-0-0	0-0-0	0-0-0	1-2-3
at HUM	Nov 21	3-3 t	DNP	0-0-0	0-0-0	0-0-0	0-0-0	0-0-0	0-0-0	0-0-0	DNP	0-1-1	0-0-0	0-1-1
HUM	Nov 22	2-2 t	DNP	0-0-0	0-1-1	0-0-0	0-0-0	0-0-0	2-0-2	DNP	DNP	0-0-0	0-0-0	0-0-0
LU	Nov 29	3-3 t	DNP	0-0-0	0-0-0	0-0-0	0-0-0	0-0-0	0-0-0	0-1-1	1-1-2	1-0-1	0-1-1	0-0-0
MU	Nov 30	1-2 L	DNP	0-0-0	0-0-0	1-0-1	0-0-0	0-0-0	0-0-0	0-1-1	0-0-0	0-0-0	0-0-0	0-0-0
STO	Dec 05	3-3 t	DNP	0-0-0	0-0-0	0-3-3	1-0-1	0-0-0	1-0-1	DNP	DNP	0-1-1	0-0-0	0-0-0
at STO	Dec 06	2-4 L	DNP	0-1-1	0-0-0	0-0-0	0-0-0	0-0-0	0-1-1	0-0-0	0-0-0	0-1-1	0-0-0	0-0-0
WILM	Jan 02	2-3 L	0-0-0	0-0-0	0-0-0	0-0-0	0-1-1	0-0-0	0-0-0	DNP	0-0-0	0-0-0	0-1-1	1-1-2
FINNU-M	Jan 09	4-2 W	0-0-0	0-1-1	0-1-1	0-0-0	0-0-0	0-1-1	DNP	0-0-0	0-0-0	1-0-1	0-1-1	2-0-2
CSS	Jan 10	0-0 t	0-0-0	0-0-0	0-0-0	0-0-0	0-0-0	0-0-0	DNP	0-0-0	0-0-0	0-0-0	0-0-0	0-0-0
at AUG	01/16/15	3-5 L	0-0-0	0-0-0	0-0-0	0-0-0	0-0-0	0-0-0	0-0-0	DNP	0-0-0	0-0-0	1-2-3	1-2-3
AUG	Jan 17	3-0 W	0-0-0	0-0-0	0-0-0	0-0-0	0-0-0	1-0-1	0-1-1	0-1-1	0-1-1	DNP	0-0-0	1-0-1
at SMU	Jan 23	0-3 L	0-0-0	0-0-0	0-0-0	0-0-0	0-0-0	0-0-0	0-0-0	0-0-0	0-0-0	DNP	0-0-0	0-0-0
SMU	Jan 24	2-1 W	0-0-0	0-0-0	0-0-0	1-0-1	0-0-0	0-0-0	0-1-1	0-0-0	DNP	DNP	0-0-0	1-0-1
at SJU	Jan 30	1-1 t	0-0-0	0-0-0	0-0-0	1-0-1	0-0-0	0-0-0	0-0-0	0-0-0	0-0-0	DNP	0-0-0	0-0-0
SJU	Jan 31	2-3 L	0-0-0	0-0-0	0-1-1	0-0-0	0-1-1	0-0-0	1-1-2	DNP	DNP	DNP	0-0-0	0-0-0
UST	Feb 13	1-1 t	0-0-0	0-1-1	0-0-0	0-0-0	0-0-0	0-0-0	0-1-1	0-0-0	DNP	DNP	0-0-0	0-0-0
at UST-MEN	Feb 14	3-1 W	0-0-0	0-0-0	1-0-1	0-0-0	0-0-0	0-1-1	0-0-0	DNP	0-0-0	0-2-2	0-2-2	0-2-2

Opponent	Date	Score	Player												
			13	14	16	17	18	19	20	21	22	23	24		
vs BU	Oct 31	2-4 L	DNP	0-0-0	0-1-1	0-0-0	0-0-0	DNP	0-0-0	DNP	DNP	0-0-0	0-1-1	0-0-0	0-0-0
vs STO	Nov 02	6-3 W	1-0-1	0-1-1	0-0-0	0-0-0	1-0-1	DNP	DNP	DNP	DNP	1-0-1	DNP	0-0-0	
UWSP	Nov 07	1-4 L	0-0-0	0-0-0	0-1-1	0-0-0	0-0-0	DNP	DNP	DNP	DNP	0-0-0	DNP	0-0-0	
STOUT	Nov 08	4-3 W	DNP	0-0-0	0-0-0	DNP	0-0-0	DNP	DNP	DNP	0-0-0	0-1-1	0-0-0	0-0-0	
at CC	Nov 14	2-1 W	1-0-1	0-1-1	DNP	DNP	0-0-0	0-1-1	DNP	0-0-0	0-1-1	0-0-0	0-0-0	0-0-0	
at CC	Nov 15	3-3 t	0-0-0	0-2-2	0-0-0	DNP	DNP	0-0-0	DNP	0-0-0	0-0-0	0-0-0	DNP	0-0-0	
at HUM	Nov 21	3-3 t	0-0-0	0-0-0	1-0-1	DNP	0-0-0	0-0-0	DNP	DNP	0-1-1	DNP	DNP	0-1-1	
HUM	Nov 22	2-2 t	0-0-0	0-0-0	0-0-0	DNP	0-0-0	0-0-0	DNP	DNP	0-0-0	DNP	DNP	0-0-0	
LU	Nov 29	3-3 t	0-0-0	0-1-1	0-0-0	DNP	0-0-0	0-0-0	DNP	DNP	1-1-2	0-0-0	DNP	0-0-0	
MU	Nov 30	1-2 L	DNP	0-0-0	0-0-0	DNP	DNP	0-0-0	DNP	DNP	0-0-0	0-0-0	0-0-0	0-1-1	
STO	Dec 05	3-3 t	0-0-0	0-0-0	0-0-0	DNP	0-0-0	0-0-0	DNP	DNP	0-0-0	DNP	DNP	1-1-2	
at STO	Dec 06	2-4 L	0-0-0	0-0-0	DNP	DNP	DNP	1-0-1	DNP	DNP	DNP	1-0-1	DNP	0-0-0	
WILM	Jan 02	2-3 L	0-0-0	0-1-1	0-0-0	DNP	DNP	0-0-0	0-0-0	DNP	0-0-0	DNP	DNP	0-0-0	
FINNU-M	Jan 09	4-2 W	DNP	0-1-1	0-0-0	DNP	0-0-0	0-0-0	1-1-2	DNP	0-0-0	0-0-0	0-1-1	0-0-0	
CSS	Jan 10	0-0 t	DNP	0-0-0	0-0-0	DNP	0-0-0	0-0-0	0-0-0	DNP	0-0-0	DNP	DNP	0-0-0	
at AUG	01/16/15	3-5 L	DNP	0-0-0	0-0-0	DNP	DNP	0-0-0	0-0-0	DNP	0-0-0	DNP	DNP	0-0-0	
AUG	Jan 17	3-0 W	0-0-0	0-0-0	1-0-1	DNP	0-0-0	0-1-1	0-0-0	DNP	0-0-0	DNP	DNP	0-1-1	
at SMU	Jan 23	0-3 L	DNP	0-0-0	0-0-0	DNP	0-0-0	0-0-0	0-0-0	DNP	0-0-0	DNP	0-0-0	0-0-0	
SMU	Jan 24	2-1 W	DNP	0-0-0	0-0-0	DNP	0-0-0	0-0-0	0-0-0	DNP	0-0-0	DNP	DNP	0-1-1	
at SJU	Jan 30	1-1 t	0-0-0	0-0-0	0-1-1	DNP	DNP	0-0-0	0-0-0	DNP	0-0-0	DNP	DNP	0-1-1	
SJU	Jan 31	2-3 L	0-0-0	0-0-0	1-0-1	DNP	0-0-0	0-0-0	0-0-0	0-0-0	0-0-0	DNP	DNP	0-1-1	
UST	Feb 13	1-1 t	DNP	0-0-0	1-0-1	DNP	0-0-0	0-0-0	0-0-0	DNP	0-0-0	DNP	DNP	0-0-0	
at UST-MEN	Feb 14	3-1 W	DNP	0-0-0	0-0-0	DNP	DNP	2-0-2	0-0-0	DNP	0-0-0	DNP	DNP	0-0-0	

Opponent	Date	Score	Player				
			25	26	27	30	35
vs BU	Oct 31	2-4 L	0-0-0	1-0-1	DNP	DNP	0-0-0
vs STO	Nov 02	6-3 W	0-0-0	0-1-1	DNP	DNP	0-0-0
UWSP	Nov 07	1-4 L	0-0-0	0-0-0	DNP	DNP	0-0-0
STOUT	Nov 08	4-3 W	0-0-0	0-0-0	DNP	DNP	0-0-0
at CC	Nov 14	2-1 W	0-0-0	0-0-0	DNP	DNP	0-0-0
at CC	Nov 15	3-3 t	0-0-0	2-1-3	DNP	DNP	0-0-0
at HUM	Nov 21	3-3 t	0-0-0	1-0-1	1-0-1	DNP	0-0-0
HUM	Nov 22	2-2 t	0-0-0	0-0-0	0-1-1	DNP	0-0-0
LU	Nov 29	3-3 t	DNP	0-0-0	DNP	DNP	0-0-0
MU	Nov 30	1-2 L	0-0-0	0-0-0	DNP	0-0-0	DNP
STO	Dec 05	3-3 t	0-0-0	0-0-0	0-0-0	DNP	0-0-0
at STO	Dec 06	2-4 L	0-0-0	0-0-0	0-0-0	DNP	0-0-0
WILM	Jan 02	2-3 L	DNP	1-0-1	0-0-0	DNP	DNP
FINNU-M	Jan 09	4-2 W	DNP	0-0-0	0-0-0	DNP	DNP
CSS	Jan 10	0-0 t	0-0-0	0-0-0	DNP	DNP	DNP
at AUG	01/16/15	3-5 L	0-0-0	1-1-2	0-0-0	DNP	DNP
AUG	Jan 17	3-0 W	DNP	0-0-0	0-0-0	DNP	DNP
at SMU	Jan 23	0-3 L	0-0-0	0-0-0	DNP	DNP	DNP
SMU	Jan 24	2-1 W	0-0-0	0-0-0	0-0-0	DNP	DNP
at SJU	Jan 30	1-1 t	DNP	0-0-0	0-0-0	DNP	DNP
SJU	Jan 31	2-3 L	DNP	DNP	0-0-0	DNP	DNP
UST	Feb 13	1-1 t	0-0-0	0-0-0	DNP	DNP	DNP
at UST-MEN	Feb 14	3-1 W	0-0-0	0-1-1	0-0-0	DNP	0-0-0