



## GUSTAVUS WOMEN'S HOCKEY NOTES 2014-15

### Gustavus Sports Information

800 W College Ave, St. Peter, MN 56082  
gustavus.edu/athletics  
(507) 933-7647 • sportsinfo@gustavus.edu

Women's Hockey Media Contact  
Nick Hoelmer, Asst. Sports Information Director  
(507) 933-8411 • nhoelmer@gustavus.edu

### Follow Gustavus Athletics Online


 Twitter  
@GustieAthletics

 Flickr  
flickr.com/photos/gogusties

 Facebook  
facebook.com/GustieAthletics

 YouTube  
youtube.com/gustavusathletics

 Game Central  
portal.stretchinternet.com/gac

 Instagram  
instagram.com/gustieathletics

### 2014-15 SCHEDULE

DATE	OPPONENT	TIME/RESULT
<b>NOVEMBER</b>		
4	<b>No. 9 UW-SUPERIOR</b>	W 3-1
14	<b>CONCORDIA COLLEGE</b>	W 3-1
15	<b>CONCORDIA COLLEGE</b>	W 2-0
21	<b>HAMLIN UNIVERSITY</b>	W 6-3
22	Hamline University	W 4-0
29	No. 1 Plattsburgh State University	T 4-4 (SL)
30	No. 5 Middlebury College	L 2-3 (OT)
<b>DECEMBER</b>		
5	St. Olaf College	W 7-2
6	<b>ST. OLAF COLLEGE</b>	T 1-1
10	No. 6 UW-River Falls	W 3-2
13	<b>No. 7 UW-STEVENS POINT</b>	W 3-1
<b>JANUARY</b>		
9	<b>NO. 7 ADRIAN COLLEGE</b>	L 0-1
10	<b>LAKE FOREST COLLEGE</b>	W 2-1
16	<b>AUGSBURG COLLEGE</b>	W 5-0
17	Augsburg College	W 2-1
23	<b>SAINT MARY'S UNIVERSITY</b>	W 3-2
24	Saint Mary's University	W 1-0
30	<b>COLLEGE OF SAINT BENEDICT</b>	W 3-0
31	College of Saint Benedict	W 2-0
<b>FEBRUARY</b>		
6	St. Catherine University	7 p.m.
7	<b>ST. CATHERINE UNIVERSITY</b>	2 p.m.
13	University of St. Thomas	7:30 p.m.
14	<b>UNIVERSITY OF ST. THOMAS</b>	2 p.m.
20	<b>BETHEL UNIVERSITY</b>	7 p.m.
21	Bethel University	2 p.m.

HOME GAMES IN BOLD AND CAPS



### 6 Gustavus Adolphus College

Golden Gusties  
11-0-1 MIAC, 15-2-2 Overall  
vs.

### St. Catherine University

Wildcats  
3-5-4 MIAC, 5-8-5 Overall



#### Game 20

**Date:** Friday, February 6 • **Time:** 7 p.m. • **Location:** St. Paul, Minn.

**Arena:** Drake Arena

**Live Video:** <http://www.tjsportsonline.net>

**Live Stats:** [http://stkatesathletics.com/sports/2013/8/14/GEN\\_0814132451.aspx?id=115](http://stkatesathletics.com/sports/2013/8/14/GEN_0814132451.aspx?id=115)

#### Game 21

**Date:** Saturday, February 7 • **Time:** 2 p.m. • **Location:** Saint Peter, Minn.

**Arena:** Don Roberts Ice Rink

**Live Stats:** <https://gustavus.edu/athletics/whky/LIVE/xlive.htm>

**Setting The Scene:** After earning a series sweep over the College of Saint Benedict this past weekend, the Gustavus Adolphus women's hockey team will be back in action this Friday and Saturday, Feb. 6 and 7, when it takes on St. Catherine University in a home-home series. Gustavus will travel to St. Paul, Minnesota on Friday for a 7 p.m. game at Drake Arena and will welcome the Wildcats to St. Peter on Saturday afternoon for a 2 p.m. matchup at Don Roberts Ice Rink. Gustavus enters the weekend with a record of 11-0-1 in the MIAC and 15-2-2 overall, while St. Kate's owns a 3-5-4 record in the MIAC and 5-8-5 overall mark.

**Last Time Out:** This past weekend, Gustavus extended its winning streak to seven when it earned a series sweep over the College of Saint Benedict. In Friday's home game, Gustavus started slow and was not able to get on the board until the second period after an up and down first. Seven minutes into the middle frame, Gustavus found itself on the power play and first-year Katie Aney was able separate from a scrum in front of the net to score on a pass from the goal line. The Gusties did not hit the net again until midway through the third period when Keri Pickel was able to control a centering pass directly in front of the net and put it through at the left post. Six minutes later, senior captain Carolyn Draayer put a slap shot right by Blazer goaltender Jenna Traut's right knee pad to give the Gusties a 3-0 lead that would hold the remainder of the game.

On Saturday, Gustavus continued to take advantage of opponent penalties when it scored two power play goals to earn a 2-0 victory over the Blazers, complete the series sweep and avenge being swept by St. Ben's last season. Gustavus wasted no time getting itself on the board when it took advantage of the Blazers' second and third penalties, getting goals from Draayer at the 12:43 mark and Aney at the 13:26 mark in the first period. The goals were the second in as many games for both Draayer and Aney. Lindsey Hibbard notched her sixth shutout of the season and third in a row, playing 59:52, making 17 saves and improving her record to 11-2-2 on the year.

St. Catherine is most recently coming off a win and a tie over Bethel University. In game one in St. Paul, the Wildcats took home a 3-2 win over the Royals thanks to a hat trick from senior forward Megan Killmer. After allowing the Royals to control play early on, the Wildcats finally found a way to generate some offense and Killmer buried her first goal at the 14:18 mark to send the Wildcats to the break with a 1-1 tie. Killmer scored her next goal on a power play chance at 18:07 in the second period and notched her final goal at the 10:55 mark in the third to give St. Kate's a 3-1 lead. Bethel's Kathryn Larson made things interesting when she scored with just 2:59 remaining, but the Wildcats' blue line held strong and secured the 3-2 win.

**12 MIAC Championships • 11 NCAA Tournament Appearances**

## The Match Up Statistical Comparison

GAC		SCU
2.95 (T-2nd)	Goals For	1.50 (10th)
1.21 (1st)	Goals Against	1.83 (2nd)
19.8% (1st)	Power Play	18.8% (2nd)
90.0% (2nd)	Penalty Kill	90.7% (1st)
+13 (1st)	Special Teams Net	+6 (3rd)
6.6 (T-8th)	Penalty Minutes	7.4 (6th)

2014-15 season averages with MIAC ranks (10 teams)

## The Series Gustavus vs. St. Catherine

All-Time Record	31-4-1
Last Meeting	W 3-1
Current Streak	W 6

### Coach Mike Carroll

Overall Record at Gustavus	346-80-27
vs. St. Catherine	28-4-1

### Coach Brad Marshall

Overall Record at St. Catherine	63-98-23
vs. Gustavus	2-16-1

Last Five Seasons	8-2-1
-------------------	-------

Date	Location	Result
2/8/14	St. Paul, Minn.	W 3-1
2/7/14	St. Peter, Minn.	W 3-0
1/19/13	St. Paul, Minn.	W 3-1
1/18/13	St. Peter, Minn.	W 2-1
1/21/12	St. Peter, Minn.	W 3-0
1/20/12	Burnsville, Minn.	W 7-0
1/29/11	St. Peter, Minn.	T 1-1
1/28/11	St. Paul, Minn.	L 1-2
3/6/10*	St. Peter, Minn.	W 5-1
1/30/10	St. Paul, Minn.	W 3-1
1/29/10	St. Peter, Minn.	L 1-2

\* - Denotes MIAC Playoff Game

\*\* - Denotes MIAC Championship Game

On Saturday, St. Kate's settled for a 0-0 tie against Bethel in Blaine, Minnesota. Wildcat goalie Abbi White tallied 38 saves to improve her record to 2-24 on the season and bump her goals against average to a paltry 1.09.

**Series Snapshot:** This weekend's series will mark the 37th and 38th meetings between Gustavus and St. Catherine in women's hockey. The Gusties hold the advantage in the all-time series with a record of 31-4-1 and have won each of the last four meetings. In head coach Mike Carroll's 15-year tenure, the Gusties are 28-4-1 against the Wildcats.

**Last Time They Met:** The last time these two teams met was during their regular season series last season, Feb. 7 and Feb. 8, 2014. Gustavus swept the series, winning game one 3-0 and game two 3-1. In game one, the Gusties scored in each period, getting two from Allison Eder-Zdechlik. Lindsey Hibbard made 22 saves in the shutout and improved to 6-3-1 on the year.

In game two the Gusties scored three second period goals to earn the series sweep. Leah Johnson, Emily Reibert and Maddie Bergh '14 each scored to help Gustavus take advantage of a 14-1 count in the second period and ensure Gustavus earned a series sweep.

**About The Wildcats:** With a record of 3-5-4 in the MIAC, St. Catherine is currently sitting in tie for seventh place in the conference standings with Saint Benedict. Each team has 10 total points and sits just behind fifth place Bethel, which has 12 points and is currently holding down the last place in the playoff race.

Saint Kate's is led by Killmer and sophomore forward Jordan Solheim. After her three goal weekend, Killmer leads the team in both points and goals with 11 and seven, respectively, while Solheim is second on the team in those categories with 10 and five, respectively, and is tied for the team lead in assists with five. Abbi White is the Wildcats' primary goalie, as she has started 8-of-18 games this season and tallied 497:35 minutes. White is 2-2-4 on the season and has a goals against average of 1.09 after allowing only 9 total goals, which leads the nation. White also has a .959 save percentage to go along with 208 total saves.

St. Catherine is especially strong on special teams as it has converted on 18.8 percent of its power play opportunities (2nd/MIAC) and is tops in the league in penalty kill at 90.7 percent.

**Lindsey Hibbard Earns MIAC Women's Hockey Athlete Of The Week Honors:** For her performance against Saint Ben's, the MIAC sports information directors honored Lindsey Hibbard with the MIAC Women's Hockey Athlete-of-the-Week award on Monday. Hibbard started off the weekend strong with an 18-save shutout in a 3-0 home victory over the Blazers, then completed her perfect series by making 17 saves in Saturday's 2-0 road win. The Gustie goaltender is now 13-2-2 in the net with a 1.09 GAA and a .948 save percentage. She leads the league in wins and win percentage (.824), is tied for first in the MIAC in GAA and ranks second in save percentage and third in total saves (349). Her six shutouts lead both the MIAC and the nation, and she's tied for the first in the nation in GAA and ranks fifth nationally in save percentage and win percentage.

**Power Play Warriors:** Coming into the weekend, Gustavus is a perfect 10-0-0 this season when it scores one or more power play goals. The Gusties have now scored at least one power play goal in their last six games.

**Gustavus Embarks On 18th Season Of Women's Hockey:** The Gustavus women's hockey team is currently in its 18th season. Founded in 1997, the Gusties have attained an all-time record of 382-99-28, which stands as the second winningest program in all of NCAA Division III women's hockey. The Gustie women have won 12 MIAC titles in the 16 years of women's hockey in the conference. Those 12 titles rank first in front of St. Thomas (3) and Augsburg and Saint Mary's, who each have two. Gustavus has also earned the MIAC Playoff crown a total of 11 times, 10 of which have come in the past 11 years and led to 11 NCAA Tournament appearances.

**Wearing The "C":** In the 17-year history of the Gustavus women's hockey program, 33 players have earned the honor of being a captain. This year, that number stays the same as two of the 2013-14 captains, Carolyn Draayer and Courtney Boucher, will move into their senior years and accept the same role during their 2014-15 campaign.

**Home Grown Talent:** Of the 24 players on this year's roster, 22 are natives of Minnesota. The only players who reside outside the State of Hockey are Courtney Bethune, who hails from Fort Frances, Ontario, and Allie Lewis, who is a native of Kearney, Nebraska.

**Veteran Squad:** Despite losing three of its top five scorers from its 2013-14 squad, Gustavus will return 63 percent of its scoring from last season. Sixteen of the Gusties' 24 players are returners, compared to just eight first-year players. Gustavus will also welcome back three of its four 2013-14 All-MIAC honorees, which include Courtney Boucher, Carolyn Draayer and Allison Eder-Zdechlik.

**Gusties In The Polls:** Gustavus is ranked sixth in the most recent USCHO.com Division III Women's Hockey Poll, which was released Monday. This week marks the 87th consecutive time that the Gusties have been ranked in the USCHO.com poll.



### Gustavus Quick Facts

Location: St. Peter, Minnesota  
 Address: 800 West College Ave.  
 St. Peter, MN 56082  
 Founded: 1862  
 Enrollment: 2,455  
 Nickname: Golden Gusties  
 School Colors: Black and Gold  
 Home Ice: Don Roberts Ice Rink  
 NCAA Affiliation: NCAA Division III  
 Conference: Minnesota Intercollegiate Athletic  
 President: Rebecca M. Bergman  
 Athletic Director: Tom Brown  
 Assistant Athletic Director: Jared Phillips  
 Athletic Trainer: Troy Banse  
 Equipment Manager: Jed Friedrich  
 Sports Information Director: Ethan Armstrong  
 Asst. Sports Information Director: Nick Hoelmer

### Gustavus Hockey Quick Facts

2013-14 Record: 17-8-2  
 2013-14 MIAC Record/Finish: 14-4-0/2nd  
 All-Time Record: 382-99-28  
 All-Time MIAC Record: 252-27-12  
 MIAC Championships: 12  
 Returners/First-years: 16/8  
 All-MIAC Honorees Returning/Lost: 3/1

## Gustavus Under Head Coach Mike Carroll

Year	Overall	MIAC	Conference Finish
1999-00	18-10-1	12-5-1	3rd
2000-01	23-6-1	16-2-0	1st
2001-02	23-5-2	18-0-1	1st
2002-03	14-9-4	11-4-3	3rd
2003-04	22-6-0	16-2-0	2nd
2004-05	25-4-1	17-1-0	1st
2005-06	22-5-2	17-0-1	1st
2006-07	25-3-0	17-1-0	1st
2007-08	25-3-0	18-0-0	1st
2008-09	22-2-4	16-0-2	1st
2009-10	26-6-2	14-3-1	1st
2010-11	22-5-3	14-2-2	1st
2011-12	24-4-2	16-1-1	1st
2012-13	27-2-1	18-0-0	1st
2013-14	17-8-2	14-4-0	2nd
2014-15	15-2-2	11-0-1	
<b>Totals</b>	<b>346-80-27</b>	<b>245-25-13</b>	<b>11 MIAC Titles</b>

## Around The League

### MIAC Standings

School	Points	MIAC	Overall
<b>Gustavus</b>	<b>23</b>	<b>11-0-1</b>	<b>15-2-2</b>
St. Thomas	19	8-1-3	9-7-3
Saint Mary's	15	7-4-1	9-8-2
Concordia	14	6-4-2	7-10-2
Bethel	12	5-5-2	10-7-2
Augsburg	11	4-5-3	6-9-4
St. Catherine	10	3-5-4	5-8-5
Saint Benedict	10	4-6-2	5-9-2
Hamline	4	1-9-2	3-14-2
St. Olaf	2	0-10-2	1-16-2

### This Weekend in the MIAC

#### Friday, February 6

Gustavus at St. Catherine | 7 p.m.  
 Saint Benedict at Hamline | 7 p.m.  
 Augsburg at Saint Mary's | 7 p.m.  
 Bethel at St. Thomas | 7:30 p.m.  
 Concordia at St. Olaf | 7:30 p.m.

#### Saturday, February 7

St. Catherine at Gustavus | 2 p.m.  
 Concordia at St. Olaf | 2 p.m.  
 St. Thomas at Bethel | 2 p.m.  
 Saint Mary's at Augsburg | 7 p.m.

### MIAC Athlete-of-the-Week



Lindsey Hibbard  
 Jr., Goalie  
 Princeton, Minn.

Opponent	GA	S	W/L
Saint Benedict	0	18	W
at Saint Benedict	0	17	W

## USCHO.com Div. III Poll

Rank	School	Overall	Points	Last
1	Elmira (14)	17-1-1	149	2
2	Plattsburgh	15-2-2	134	1
3	Norwich	13-3-2	110	3
4	Middlebury	13-2-3	101	4
5	Adrian (1)	17-0-3	95	5
6	Gustavus Adolphus	15-2-2	79	6
7	Wisconsin-River Falls	16-3-1	67	7
8	Wisconsin-Stevens Point	13-6-2	40	9
9	Amherst	12-2-3	33	8
10	Lake Forest	10-5-3	7	NR



## Gustavus Record When:

At home	9-1-1
On the road	6-0-1
Neutral Site	0-1-0
vs. MIAC opponents	11-0-1
vs. Non-conference opponents	4-2-1
vs. Top 10 opponents	3-2-1
GAC scores 4 or more goals	5-0-1
GAC scores 3 goals	6-0-0
GAC scores 2 or fewer goals	5-2-1
GAC scores first	10-1-1
Opponent scores first	5-1-1
GAC leads after 1st period	5-1-1
Opponent leads after 1st period	2-0-0
Tied after 1st period	6-1-1
GAC leads after 2nd period	8-0-1
Opponent leads after 2nd period	2-0-1
Tied after 2nd period	4-2-0
In overtime	0-1-1
Games decided by one goal	5-2-0
Games decided by two goals	6-0-0
Games decided by three goals	2-0-0
Games decided by four or more	3-0-0
GAC scores on the power play	7-0-0
GAC scoreless on the power play	5-2-2
GAC scores two or more PP goals	6-0-0
GAC outshoots opponent	13-1-1
GAC outshot by opponent	1-1-1
Shots equal	1-0-0
Tuesday Games	1-0-0
Wednesday Games	1-0-0
Friday Games	6-1-0
Saturday Games	7-0-2
Sunday Games	0-1-0
In November	5-1-1
In December	3-0-1
In January	7-1-0
In February	0-0-0
In March	0-0-0
Following a win	11-1-2
Following a loss	2-0-0
Following a tie	1-1-0
Night games	9-1-1
Day games	6-1-1

## Who's Hot

### Scoring vs. CSB

Player	Games	Goals	Assists	Points	Point Streak
Allison Eder-Zdechlik	2	0	2	2	-
Carolyn Draayer	2	2	0	2	5
Katie Aney	2	2	0	2	2
Erica Power	2	0	3	3	2

### Goaltending vs. CSB

Player	Record	Minutes	GA	Saves	Scoreless Str.
Lindsey Hibbard	2-0-0	119:52	0	35	190:51

## 2014-15 Season By The Numbers

Largest Victory	5 (2X) Last: vs. Augsburg (1/16/15)
Largest Defeat	1 (2X) Last: vs. Adrian (1/9/15)
Largest First Period Lead	2 (2X) Last: vs. Saint Benedict (1/31/15)
Largest First Period Deficit	1 (3x) last: vs. Saint Mary's (1/23/15)
Largest Second Period Lead	3 (3x) Last: vs. Augsburg (1/16/15)
Largest Second Period Deficit	2 vs. Plattsburgh (11/29/14)
Most Goals Scored	7 vs. St. Olaf (12/5/14)
Fewest Goals Scored	0 vs. Adrian (1/9/15)
Most Goals Allowed	4 vs. Plattsburgh (11/29/14)
Fewest Goals Allowed	0 (4x) Last: vs. Saint Benedict (1/31/15)
Largest Lead	5 (2X) Last: vs. Augsburg (1/16/15)
Largest Lead On Road	5 vs. St. Olaf (12/5/14)
Largest Lead At Home	5 vs. Augsburg (1/16/15)
Largest Blown Lead	1 vs. Middlebury (11/30/14)
Largest Deficit	3 vs. Plattsburgh (11/29/14)
Largest Deficit On Road	3 vs. Plattsburgh (11/29/14)
Largest Deficit At Home	1 vs. Adrian (1/9/15)
Largest Comeback-Win/Tie	3 vs. Plattsburgh=Tie (11/29/14)



## Last Time It Happened

### COMEBACKS

#### GAC won when trailing after two periods

GAC: January 13, 2015 vs. UW-Stevens Point. Trailed 1-0 early in the third, Gustavus scored three consecutive goals to capture a 3-1 victory.

#### Opponent won when trailing after two periods

Feb. 1, 2014 vs. Saint Benedict. Blazers trailed 2-1 after two periods, but scored three in the third to capture a 4-2 win.

#### Overcame 1-goal deficit and won

GAC: January 23, 2015 vs. Saint Mary's University. Trailed 1-0 early in the first, Gustavus won 3-2.

OPP: Nov. 30, 2014 vs. Middlebury. Trailed 1-0 in first period, won 3-2

#### Overcame 2-goal deficit and won

GAC: Feb. 29, 2013 vs. Bethel. Gusties trailed 2-0 after two, but came back with three goals in the third for a 3-2 win.

OPP: Feb. 1, 2014 vs. Saint Benedict. Blazers trailed 2-0 in second period, but scored four unanswered goals to capture a 4-2 win.

#### Overcame a 3-goal deficit and won

GAC: March 1, 1998 vs. University of Minnesota Club. Gusties scored one in the second and three in the third to win 4-3.

OPP: Never

### OVERTIME GAMES

#### Won overtime game

GAC: March 1, 2012 vs. Bethel. Courtney Boucher scored 6:25 in to overtime to win 1-0 and advance to the MIAC Championship.

OPP: Nov. 30, 2014 vs. Middlebury

#### Tied overtime game

Nov. 29, 2014 at Plattsburgh (4-4)

### SERIES SWEEPS

#### Swept a 2-game regular season home-home series

GAC: Jan. 30-31, 2015 vs. College of Saint Benedict. (3-0 Friday in St. Peter, 2-0 Saturday in St. Cloud)  
OPP: Jan. 31-Feb. 1, 2014 vs. Saint Benedict. (4-2 Friday night in St. Peter, 4-2 again on Saturday in St. Cloud)

#### Swept a 2-game regular season home series

GAC: Nov. 14-15, 2014 vs. Concordia. (3-1, 2-0)

OPP: Never

#### Swept a 2-game regular season away series

GAC: Nov. 15-16, 2013 at Concordia. (4-1, 2-0)

OPP: Never. (MIAC Playoffs: March 10-11, 2000 at Augsburg. (4-1, 2-1)

### SHUTOUTS

#### Last Shutout

GAC: Jan. 31, 2015 vs. Saint Benedict, 2-0

OPP: Jan. 9, 2015 vs. Adrian, 1-0

#### Last Home Shutout

GAC: Jan. 30, 2015 vs. Saint Benedict, 3-0

OPP: Jan. 9, 2015 vs. Adrian 1-0

#### Last Road Shutout

GAC: Jan. 31, 2015 vs. Saint Benedict, 2-0

OPP: Mar. 8, 2014 vs. St. Thomas 2-0

#### Scoreless Ties (2 in program history)

Jan. 14, 2010 vs. Trinity (Conn.)

Feb. 17, 2009 at UW-Stevens Point

### EXTRA ATTACKER GOALS

#### Scored an extra attacker goal

GAC: Nov. 30, 2014 vs. Middlebury. Lydia Wagner scored w/ 39 sec. left

OPP: Jan. 9, 2005 at UW-River Falls. Gusties won 6-4.

### SHORTHANDED GOALS

#### Scored a shorthanded goal

GAC: Jan. 16, 2015 vs. Augsburg. Allison Eder-Zdechlik scored shorthanded goal in second period to put Gustavus up 3-0.

OPP: Jan. 10, 2014 at UW-Stevens Point. Cassandra Salmen scored shorthanded in the third period of a 5-2 win for the Pointers.

#### Scored two shorthanded goals

GAC: Nov. 22, 2008 at St. Olaf. Melissa Mackley scored two short-handed goals in the third period.

Gusties won 4-2.

OPP: Never

### EMPTY NET GOALS

#### Scored an empty net goal

GAC: Dec. 13, 2014 vs. UW-Stevens Point. Allison Eder-Zdechlik scored EN at 19:46 of a 3-1 win for the Gusties in St. Peter.

OPP: Feb. 15, 2014 vs. St. Thomas. Karina Marette scored EN at 19:47 of a 3-1 Tommie win in Mendota Heights.

### TEAM GOALS IN A PERIOD

#### Team scored 5 or more goals in a period

GAC: Feb. 23, 2013 vs. Saint Benedict. The Gusties scored six goals in the second period on their way to an 8-2 victory in St. Peter.

OPP: Dec. 3, 1998 at the University of Minnesota (Mariucci Arena). Gophers scored five goals in the first period and won 8-1.

### PENALTY SHOTS

#### Scored on a penalty shot

GAC: Never.

OPP: March 19, 2011 vs. Middlebury (NCAA 3rd Place Game, Rochester, N.Y.). Penalty shot goal scored after Lindsey Hjelm checking penalty in the second period. Middlebury won 5-0.

### PENALTIES

#### Not penalized

GAC: Jan. 24, 2015 at Saint Mary's. Gustavus won 1-0.

OPP: Dec. 2, 2000 at St. Catherine. St. Kate's won 4-3.

#### Neither team was penalized

Jan. 30, 1998 at Saint Mary's. Gusties won 6-2.

### HAT TRICKS

#### Last individual 3-goal game

GAC: Jan. 26, 2013 vs. Concordia. Lindsey Hjelm scored three goals (all even) in a 5-1 Gustavus win in St. Peter.

OPP: Jan. 10, 2014 at UW-Stevens Point. Cassandra Salmen scored three goals in the third period of a 5-2 Pointer win.

#### Last individual 4-goal game

GAC: Dec. 2, 2011 at Augsburg. Allie Schwab scored three PP goals and an even goal in a 9-0 shutout.

OPP: Never.

#### All goals scored by one player (3+ Goals)

GAC: Never.

OPP: Dec. 2, 2006 at Hamline. Melanie Levielle scored all three goals in a 4-3 loss.

### SHOTS ON GOAL

#### Fewer than 15 shots in a game

GAC: Dec. 3, 1998 at the University of Minnesota. 11 shots. Minnesota won 8-1.

OPP: Jan. 16, 2015 vs. Augsburg, 10 shots. Gustavus won 5-0.

#### Fewer than 20 shots in a game

GAC: Jan. 9, 2015 vs. Adrian, 17 shots. Gustavus lost 1-0.

OPP: Jan. 31, 2015 vs. Saint Benedict, 17 shots. Gustavus won 2-0.

#### 40 or more shots in a game

GAC: Jan. 24, 2015 vs. Saint Mary's, 41 shots. Gustavus won 1-0.

OPP: Nov. 29, 2014 at Plattsburgh, 42 shots. Tied 4-4.

#### 50 or more shots in a game

GAC: Feb. 16, 2013 vs. St. Olaf, 51 shots. Gustavus won 6-2.

OPP: Nov. 23, 1998 vs. the University of Minnesota: 51 shots. Minnesota won 6-0.

#### 60 or more shots in a game

GAC: Feb. 15, 2013 at St. Olaf, 61 shots. Gustavus won 7-4.

OPP: Feb. 5, 1998 at Boston College, 65 shots. BC won 10-1.

### SINGLE GAME POINTS

#### Player had four points in a game

GAC: Dec. 5, 2014 at St. Olaf. Erica Power scored two goals, two assists. Diana Draayer scored one goal, three assists in same game.

OPP: Mar. 18, 2011 vs. Norwich (NCAA Semifinals). Julie Fortier scored three goals with an assist in a 5-4 Norwich victory.

#### Player had five points in a game

GAC: Dec. 2, 2011 at Augsburg. Allie Schwab scored three PP goals and an even goal with an assist in a 9-0 shutout.

OPP: Mar. 18, 2005 vs. Middlebury. (NCAA Semifinals) Lorna Griffis scored two goals with three assists in a 7-3 Middlebury win.

#### Player had six or more points in a game

GAC: Feb. 11, 2005 at St. Catherine. Andrea Peterson scored two goals with six assists in a 13-0 win. (Most individual points in a game in program history)

OPP: Jan. 30, 1999 at Middlebury. Michelle Labbe scored three goals with three assists in a 8-0 Middlebury win.





## Carroll At A Glance

### Hometown

- Edina, Minnesota

### Education

- Bachelor's Degree: Recreation, Parks, and Leisure Services (Minnesota State, Mankato '82)

### Family

- Wife: Terri
- Children: Matt and Mike

### Coaching

- 1983-84 – Assistant Coach, University of St. Thomas
- 1984-85 – Assistant Coach, Fergus Falls High School
- 1986-87 – Head Coach, Fergus Falls Community College
- 1990-99 – Head Coach, Mankato West High School
- 1999-Present – Head Coach, Gustavus Adolphus College

Years At Gustavus: 15

All-time Record: 346-80-27

All-time MIAC Record: 245-25-13

MIAC Titles: 11

MIAC Playoff Titles: 11

NCAA Tournaments: 11

NCAA Tournament Record: 8-16-0

Final Fours: 7

Most Wins In A Season: 27 (2012-13)

Fewest Wins In A Season: 14 (2002-03)

\*\*\* All-time winningest coach in Gustavus women's hockey history.

## Head Coach Mike Carroll

Mike Carroll is in his 16th season as the women's head hockey coach at Gustavus. Within his tenure behind the Gustie bench, Carroll has turned Gustavus women's hockey into one of the most successful programs in NCAA Division III. He has compiled an overall record of 346-80-27 in 15 seasons and has the most coaching victories in the history of the program.

Last season, the Gustavus women's hockey team saw its reign atop the Minnesota Intercollegiate Athletic Conference (MIAC) come to an end. The Gusties finished second in the final conference standings with 28 points at 14-4-0, ending their streak of consecutive MIAC Championships at nine. After defeating Bethel 3-2 in the MIAC Playoff Semifinals, Gustavus's season concluded with a 2-0 loss to regular season champion St. Thomas in the MIAC Playoff Championship. The postseason defeat suffered to the Tommies ended Head Coach Mike Carroll's run of 10 consecutive MIAC Playoff titles and trips to the NCAA Tournament. The Gusties finished the year with an overall record of 17-8-2.

Carroll has directed the Gusties to 11 MIAC regular season titles (2000-01, 2001-02, 2004-05, 2005-06, 2006-07, 2007-08, 2008-09, 2009-10, 2010-11, 2011-12, 2012-13) and has been named the MIAC Coach-of-the-Year six times (2001-02, 2003-04, 2004-05, 2005-06, 2010-11, 2012-13). In addition to coaching 34 players who have earned All-Conference honors 59 times, he has coached five MIAC Players-of-the-Year in Sarah Garrison, Andrea Peterson, Stefanie Ubl, Allie Schwab, Lindsey Hjelm. Carroll has also worked with 13 players who have earned AHCA All-America distinction 21 times and two American Hockey Coaches Association Players-of-the-Year, including four-time MIAC Player-of-the-Year and four-time All-American Andrea Peterson.

Prior to coming to Gustavus, Carroll served as the head boys' hockey coach at Mankato West High School from 1991 to 1999. Carroll's college coaching resume included a stint as head men's hockey coach at Fergus Falls Community College from 1986 to 1987 as well as a season as the assistant men's coach at the University of St. Thomas in 1983.

Carroll, an Edina, Minnesota native, competed in hockey and baseball at Mankato State. After graduating with a degree in municipal recreation in 1982, Carroll played professional baseball in the Montreal Expos organization for two years.

In addition to his hockey coaching duties at Gustavus, Carroll is also the head coach of the Golden Gustie baseball team. Mike and his wife, Terri, live in Mankato and have two sons, Matt and Mike.

## 2014-15 Roster

### Breakdown

#### Returners (16)

Courtney Bethune  
 Courtney Boucher  
 Marissa Brandt  
 Carolyn Draayer  
 Allison Eder-Zdechlik  
 Emily Gustafson  
 Hannah Heacox  
 Lindsey Hibbard  
 Callie Johnson  
 Leah Johnson  
 Amanda Koep  
 Allie Lewis  
 Keri Pickel  
 Courtney Potter  
 Emily Reibert  
 Lydia Wagner

#### Newcomers (8)

Katie Aney  
 Diana Draayer  
 Katy Fuller  
 Laura Johnson  
 Kaitlyn Klein  
 Erica Power  
 Ashley Ritten  
 Rachel Skoglund

#### By Class

##### Seniors (5)

Courtney Boucher  
 Marissa Brandt  
 Carolyn Draayer  
 Leah Johnson  
 Keri Pickel

##### Juniors (4)

Allison Eder-Zdechlik  
 Lindsey Hibbard  
 Amanda Koep  
 Emily Reibert

##### Sophomores (7)

Courtney Bethune  
 Emily Gustafson  
 Hannah Heacox  
 Callie Johnson  
 Allie Lewis  
 Courtney Potter  
 Lydia Wagner

##### First-Years (8)

Katie Aney  
 Diana Draayer  
 Katy Fuller  
 Laura Johnson  
 Kaitlyn Klein  
 Erica Power  
 Ashley Ritten  
 Rachel Skoglund

## 2014-15 Numerical Roster

No.	Name	Yr.	Pos.	Hgt.	Hometown/High School
1	Lindsey Hibbard	Jr.	G	5-6	Princeton, Minn./Princeton
2	Courtney Bethune	So.	D	5-8	Fort Frances, Ont./Warroad
3	Emily Reibert	Jr.	F	5-5	Inver Grove Heights, Minn./South St. Paul
4	Diana Draayer	Fy.	F	5-5	Deephaven, Minn./Minnetonka
5	Rachel Skoglund	Fy.	D	5-2	Forest Lake, Minn./Forest Lake
6	Emily Gustafson	So.	F	5-1	Esko, Minn./Esko
7	Lydia Wagner	So.	D	5-7	Zumbrota, Minn./Zumbrota-Mazeppa
8	Allison Eder-Zdechlik	Jr.	F	5-4	Stillwater, Minn./Stillwater
9	Erica Power	Fy.	F	5-6	Lakeville, Minn./Apple Valley
10	Courtney Boucher	Sr.	F/D	5-7	Hastings, Minn./Hastings
11	Keri Pickel	Sr.	F	5-2	Rochester, Minn./Mayo
12	Hannah Heacox	So.	F	5-3	Stillwater, Minn./Stillwater
13	Katie Aney	Fy.	F	5-8	Rochester, Minn./Century
14	Katy Fuller	Fy.	F	5-5	Minneapolis, Minn./Southwest
15	Leah Johnson	Sr.	F	5-4	Chanhassen, Minn./Chaska
17	Callie Johnson	So.	F	5-7	Detroit Lakes, Minn./Detroit Lakes
18	Carolyn Draayer	Sr.	F	5-6	Deephaven, Minn./Minnetonka
19	Allie Lewis	So.	F	5-3	Kearney, Neb./Shattuck-St. Mary's
20	Kaitlyn Klein	Fy.	F	5-6	Plymouth, Minn./Wayzata
22	Marissa Brandt	Sr.	F/D	5-6	Vadnais Heights, Minn./Hill-Murray
23	Laura Johnson	Fy.	D	5-5	Chanhassen, Minn./Chanhassen
24	Courtney Potter	So.	D	5-2	Dayton, Minn./Champlin Park
33	Ashley Ritten	Fy.	G	5-6	Robbinsdale, Minn./Robbinsdale Armstrong
35	Amanda Koep	Jr.	G	5-5	St. Michael, Minn./St. Michael-Albertville

**Head Coach:** Mike Carroll (16th season)

**Assistant Coaches:** Amanda Trunzo, Steve Carroll

## Alphabetical Roster/Pronunciation Guide

NO.	NAME	Pronunciation
13	Aney, Katie	
2	Bethune, Courtney	beth-OON
10	Boucher, Courtney	BOO-shay
22	Brandt, Marissa	
18	Draayer, Carolyn	DRAY-er
4	Draayer, Diana	DRAY-er
8	Eder-Zdechlik, Allison	ee-der-ZED-lick
14	Fuller, Katy	
6	Gustafson, Emily	GUST-uhf-son
12	Heacox, Hannah	HEE-cox
1	Hibbard, Lindsey	
23	Johnson, Laura	
15	Johnson, Leah	
17	Johnson, Callie	
20	Klein, Kaitlyn	
35	Koep, Amanda	COPE
19	Lewis, Allie	
11	Pickel, Keri	
9	Power, Erica	
24	Potter, Courtney	
3	Reibert, Emily	RYE-bert
33	Ritten, Ashley	
5	Skoglund, Rachel	SKOHG-lund
7	Wagner, Lydia	

## Player Profiles



**#1 Lindsey Hibbard**  
Jr., Goaltender  
Princeton, Minn./Princeton

### Season Numbers

GP	GAA	Save Pct.	Record
18	1.09	.948	13-2-2



**#2 Courtney Bethune**  
So., Defender  
Fort Frances, Ont./Warroad

### Season Numbers

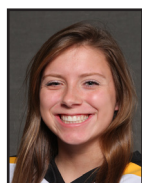
GP	Goals	Assists	Points
19	0	0	0



**#3 Emily Reibert**  
Jr., Forward  
Inver Grove Heights, Minn./South St. Paul

### Season Numbers

GP	Goals	Assists	Points
18	5	2	7



**#4 Diana Draayer**  
Fy., Forward  
Deephaven, Minn./Minnetonka

### Season Numbers

GP	Goals	Assists	Points
19	2	9	11



**#5 Rachel Skoglund**  
Fy., Defender  
Forest Lake, Minn./Forest Lake

### Season Numbers

GP	Goals	Assists	Points
18	2	5	7



**#6 Emily Gustafson**  
So., Forward  
Esko, Minn./Esko

### Season Numbers

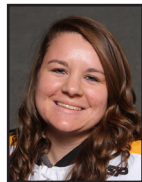
GP	Goals	Assists	Points
17	0	2	2



**#7 Lydia Wagner**  
So., Defender  
Zumbrota, Minn./Zumbrota-Mazeppa

### Season Numbers

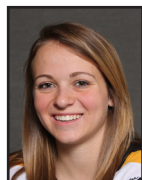
GP	Goals	Assists	Points
16	2	3	5



**#8 Allison Eder-Zdechlik**  
Jr., Forward  
Stillwater, Minn./Stillwater

### Season Numbers

GP	Goals	Assists	Points
15	9	7	16



**#9 Erica Power**  
Fy., Forward  
Lakeville, Minn./Apple Valley

### Season Numbers

GP	Goals	Assists	Points
19	6	13	19



## Player Profiles



**#10 Courtney Boucher**  
Sr., Forward/Defender  
Hastings, Minn./Hastings

Season Numbers

GP	Goals	Assists	Points
19	2	6	8



**#11 Keri Pickel**  
Sr., Forward  
Rochester, Minn./Mayo

Season Numbers

GP	Goals	Assists	Points
19	4	2	6



**#12 Hannah Heacox**  
So., Forward  
Stillwater, Minn./Stillwater

Season Numbers

GP	Goals	Assists	Points
6	0	0	0



**#13 Katie Aney**  
Fy., Forward  
Rochester, Minn./Century

Season Numbers

GP	Goals	Assists	Points
19	6	2	8



**#14 Katy Fuller**  
Fy., Forward  
Minneapolis, Minn./Southwest

Season Numbers

GP	Goals	Assists	Points
19	2	3	5



**#15 Leah Johnson**  
Sr., Forward  
Chanhassen, Minn./Chanhassen

Season Numbers

GP	Goals	Assists	Points
16	0	2	2



**#17 Callie Johnson**  
So., Forward  
Detroit Lakes, Minn./Detroit Lakes

Season Numbers

GP	Goals	Assists	Points
4	0	1	1



**#18 Carolyn Draayer**  
Sr., Forward  
Deephaven, Minn./Minnetonka

Season Numbers

GP	Goals	Assists	Points
19	10	4	14



**#19 Allie Lewis**  
So., Forward  
Kearney, Neb./Shattuck-St. Mary's

Season Numbers

GP	Goals	Assists	Points
19	0	2	2

## Player Profiles



**#20 Kaitlyn Klein**  
 Fr., Forward  
 Plymouth, Minn./Wayzata

Season Numbers

GP	Goals	Assists	Points
19	4	3	7



**#22 Marissa Brandt**  
 Sr., Forward/Defender  
 Vadnais Heights, Minn./Hill-Murray

Season Numbers

GP	Goals	Assists	Points
19	2	2	4



**#23 Laura Johnson**  
 Fr., Defender  
 Chanhassen, Minn./Chanhassen

Season Numbers

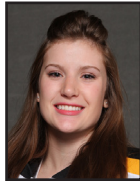
GP	Goals	Assists	Points
15	0	3	3



**#24 Courtney Potter**  
 So., Defender  
 Dayton, Minn./Champlin Park

Season Numbers

GP	Goals	Assists	Points
8	0	0	0



**#33 Ashley Ritten**  
 Fr., Goaltender  
 Robbinsdale, Minn./Robbinsdale Armstrong

Season Numbers

GP	GAA	Save Pct.	Record
0	---	---	0-0-0



**#35 Amanda Koep**  
 Jr., Goaltender  
 St. Michael, Minn./St. Michael-Albertville

Season Numbers

GP	GAA	Save Pct.	Record
2	2.38	.852	2-0-0

**Gustavus Adolphus Hockey  
Gustavus Adolphus Overall Team Statistics (as of Feb 05, 2015)  
All games**

Overall: 15-2-2 Conf: 11-0-1 Home: 9-1-1 Away: 6-0-1 Neut: 0-1-0

<b>TEAM STATISTICS</b>	<b>GAC</b>	<b>OPP</b>
<b>SHOT STATISTICS</b>		
Goals-Shot attempts	56-647	23-395
Shot pct.	.087	.058
Goals/Game	2.9	1.2
Shots/Game	34.1	20.8
Assists	71	31
<b>POWER PLAYS</b>		
Goals-Power Plays	17-79	6-53
Conversion Percent	.215	.113
Shot Attempts	149	72
Shot Percent	.114	.083
<b>SHORT-HANDED</b>		
Goals-Shot attempts	2-15	0-22
Shot Percent	.133	.000
<b>GOAL BREAKDOWN</b>		
Total Goals	56	23
Power Play	17	6
Short-handed	2	0
Empty net	1	0
Penalty	0	0
Unassisted	8	3
Overtime	0	1
Shootout	0	0
Delayed Penalty	0	0
<b>PENALTIES</b>		
Number	63	88
Minutes	126	176
Penalties/Game	3.3	4.6
Pen minutes/Game	6.6	9.3
Minor	63	88
Major	0	0
10-minute Misconduct	0	0
Game Misconduct	0	0
Gross Misconduct	0	0
Match	0	0
<b>FACEOFFS (W-L)</b>		
Faceoff W-L Pct.	586-385	385-586
Faceoff W-L Pct.	.604	.396
<b>SHOOTOUTS (Made-Att)</b>		
	1-4	2-4
<b>ATTENDANCE</b>		
Total	1079	1438
Dates/Avg Per Date	11/98	7/205
Neutral Site #/Avg	1/120	

<b>Goals by Period</b>	<b>1st</b>	<b>2nd</b>	<b>3rd</b>	<b>OT</b>	<b>Total</b>
Gustavus Adolphus	12	17	27	0	56
Opponents	5	9	8	1	23

<b>Shots by Period</b>	<b>1st</b>	<b>2nd</b>	<b>3rd</b>	<b>OT</b>	<b>Total</b>
Gustavus Adolphus	208	225	209	5	647
Opponents	125	139	127	4	395

<b>Saves by Period</b>	<b>1st</b>	<b>2nd</b>	<b>3rd</b>	<b>OT</b>	<b>Total</b>
Gustavus Adolphus	120	130	119	3	372
Opponents	196	208	181	5	590

**Gustavus Adolphus Hockey**  
**Gustavus Adolphus Category Leaders (as of Feb 05, 2015)**  
**All games**

##	Points	GP	G	A	Pts	Sh
9	Erica Power	19	6	13	19	67
8	A. Eder-Zdechlik	15	9	7	16	57
18	Carolyn Draayer	19	10	4	14	78
4	Diana Draayer	19	2	9	11	38
13	Katie Aney	19	6	2	8	40
10	Courtney Boucher	19	2	6	8	71
3	Emily Reibert	18	5	2	7	30
20	Kaitlyn Klein	19	4	3	7	33
5	Rachel Skoglund	18	2	5	7	31
11	Keri Pickel	19	4	2	6	25

##	Goals	GP	G	A	Pts	Sh
18	Carolyn Draayer	19	10	4	14	78
8	A. Eder-Zdechlik	15	9	7	16	57
9	Erica Power	19	6	13	19	67
13	Katie Aney	19	6	2	8	40
3	Emily Reibert	18	5	2	7	30
20	Kaitlyn Klein	19	4	3	7	33
11	Keri Pickel	19	4	2	6	25
4	Diana Draayer	19	2	9	11	38
10	Courtney Boucher	19	2	6	8	71
5	Rachel Skoglund	18	2	5	7	31

##	Power-Play Goals	GP	PPG
18	Carolyn Draayer	19	5
13	Katie Aney	19	4
9	Erica Power	19	2

##	Short-Handed Goals	GP	SHG
8	A. Eder-Zdechlik	15	2

##	Game-Winning Goals	GP	GWG
18	Carolyn Draayer	19	3
13	Katie Aney	19	2
20	Kaitlyn Klein	19	2
8	A. Eder-Zdechlik	15	2

##	Plus/Minus	GP	+/-
8	A. Eder-Zdechlik	15	+16
10	Courtney Boucher	19	+14
9	Erica Power	19	+13
2	Courtney Bethune	19	+9
5	Rachel Skoglund	18	+8
23	Laura Johnson	15	+8
18	Carolyn Draayer	19	+6
4	Diana Draayer	19	+6
20	Kaitlyn Klein	19	+6
11	Keri Pickel	19	+5

##	Assists	GP	G	A	Pts	Sh
9	Erica Power	19	6	13	19	67
4	Diana Draayer	19	2	9	11	38
8	A. Eder-Zdechlik	15	9	7	16	57
10	Courtney Boucher	19	2	6	8	71
5	Rachel Skoglund	18	2	5	7	31
18	Carolyn Draayer	19	10	4	14	78
20	Kaitlyn Klein	19	4	3	7	33
14	Katy Fuller	19	2	3	5	35
7	Lydia Wagner	16	2	3	5	34
23	Laura Johnson	15	0	3	3	29

##	Shots	GP	G	A	Pts	Sh	Sh%
18	Carolyn Draayer	19	10	4	14	78	.128
10	Courtney Boucher	19	2	6	8	71	.028
9	Erica Power	19	6	13	19	67	.090
8	A. Eder-Zdechlik	15	9	7	16	57	.158
13	Katie Aney	19	6	2	8	40	.150
4	Diana Draayer	19	2	9	11	38	.053
14	Katy Fuller	19	2	3	5	35	.057
7	Lydia Wagner	16	2	3	5	34	.059
20	Kaitlyn Klein	19	4	3	7	33	.121
5	Rachel Skoglund	18	2	5	7	31	.065

##	Shot Pct.	GP	G	A	Pts	Sh	Sh%
3	Emily Reibert	18	5	2	7	30	.167
11	Keri Pickel	19	4	2	6	25	.160
8	A. Eder-Zdechlik	15	9	7	16	57	.158
13	Katie Aney	19	6	2	8	40	.150
22	Marissa Brandt	19	2	2	4	14	.143
18	Carolyn Draayer	19	10	4	14	78	.128
20	Kaitlyn Klein	19	4	3	7	33	.121
9	Erica Power	19	6	13	19	67	.090
5	Rachel Skoglund	18	2	5	7	31	.065
7	Lydia Wagner	16	2	3	5	34	.059

##	Penalties	GP	Pen	Min
3	Emily Reibert	18	7	14
23	Laura Johnson	15	7	14
4	Diana Draayer	19	6	12
14	Katy Fuller	19	5	10
10	Courtney Boucher	19	5	10
7	Lydia Wagner	16	4	8
2	Courtney Bethune	19	4	8
5	Rachel Skoglund	18	3	6
22	Marissa Brandt	19	3	6
13	Katie Aney	19	3	6

##	Penalty Minutes	GP	Pen	Min
3	Emily Reibert	18	7	14
23	Laura Johnson	15	7	14
4	Diana Draayer	19	6	12
14	Katy Fuller	19	5	10
10	Courtney Boucher	19	5	10
7	Lydia Wagner	16	4	8
2	Courtney Bethune	19	4	8
5	Rachel Skoglund	18	3	6
22	Marissa Brandt	19	3	6
13	Katie Aney	19	3	6

**Gustavus Adolphus Hockey  
Gustavus Adolphus Combined Team Statistics (as of Feb 05, 2015)  
All games**

Date	Opponent		Score	Att.
Nov 04	#9 UW-SUPERIOR	w	3-1	123
* Nov 14	CONCORDIA COLLEGE	w	3-1	111
* Nov 15	CONCORDIA COLLEGE	w	2-0	73
* Nov 21	HAMLIN UNIVERSITY	w	6-3	143
* Nov 22	at Hamline University	w	4-0	164
Nov 29	at Plattsburgh State	Tot	4-4	381
Nov 30	vs #5 Middlebury	Lot	2-3	120
* Dec 05	at St. Olaf	w	7-2	163
* Dec 06	ST. OLAF	Tot	1-1	97
Dec 10	at #6 UW-River Falls	w	3-2	183
Dec 13	UW-STEVENS POINT	w	3-1	97
Jan 09	ADRIAN	L	0-1	57
Jan 10	LAKE FOREST	w	2-1	85
* Jan 16	AUGSBURG	w	5-0	79
* 01/17/15	at Augsburg	w	2-1	222
* Jan 23	ST. MARY'S	w	3-2	101
* Jan 24	at St. Mary's	w	1-0	130
* Jan 30	CSB	w	3-0	113
* Jan 31	at CSB	w	2-0	195

	GAC	OPP
<b>TEAM STATISTICS</b>		
<b>SHOT STATISTICS</b>		
Goals-Shot attempts	56-647	23-395
Shot pct.	.087	.058
Goals/Game	2.9	1.2
Shots/Game	34.1	20.8
<b>POWER PLAYS</b>		
Goals-Power Plays	17-79	6-53
Conversion Percent	.215	.113
Shot Attempts	149	72
Shot Percent	.114	.083
<b>SHORT-HANDED</b>		
Goals-Shot attempts	2-15	0-22
Shot Percent	.133	.000
<b>GOAL BREAKDOWN</b>		
Power Play	17	6
Short-handed	2	0
Empty net	1	0
Penalty	0	0
Unassisted	8	3
Overtime	0	1
Shootout	0	0
Delayed Penalty	0	0
<b>PENALTIES</b>		
Number	63	88
Minutes	126	176
Penalties/Game	3.3	4.6
Pen minutes/Game	6.6	9.3
<b>FACEOFFS (W-L)</b>		
Faceoff W-L Pct.	586-385	385-586
Faceoff W-L Pct.	.604	.396
<b>SHOOTOUTS (Made-Att)</b>		
	1-4	2-4

Record:	Overall	Home	Away	Neutral
ALL GAMES	15-2-2	9-1-1	6-0-1	0-1-0
CONFERENCE	11-0-1	6-0-1	5-0-0	0-0-0
NON-CONFERENCE	4-2-1	3-1-0	1-0-1	0-1-0

#	Player	gp	g	a	pts	sh	sh%	pen-min	pp	sh
9	Erica Power	19	6	13	19	67	.090	3-6	2	0
8	A. Eder-Zdechlik	15	9	7	16	57	.158	2-4	0	2
18	Carolynd Draayer	19	10	4	14	78	.128	3-6	5	0
4	Diana Draayer	19	2	9	11	38	.053	6-12	1	0
13	Katie Aney	19	6	2	8	40	.150	3-6	4	0
10	Courtney Boucher	19	2	6	8	71	.028	5-10	0	0
3	Emily Reibert	18	5	2	7	30	.167	7-14	1	0
20	Kaitlyn Klein	19	4	3	7	33	.121	0-0	1	0
5	Rachel Skoglund	18	2	5	7	31	.065	3-6	0	0
11	Keri Pickel	19	4	2	6	25	.160	1-2	1	0
14	Katy Fuller	19	2	3	5	35	.057	5-10	0	0
7	Lydia Wagner	16	2	3	5	34	.059	4-8	1	0
22	Marissa Brandt	19	2	2	4	14	.143	3-6	1	0
23	Laura Johnson	15	0	3	3	29	.000	7-14	0	0
6	Emily Gustafson	17	0	2	2	16	.000	2-4	0	0
15	Leah Johnson	16	0	2	2	7	.000	2-4	0	0
19	Allie Lewis	19	0	2	2	11	.000	0-0	0	0
17	Callie Johnson	4	0	1	1	1	.000	1-2	0	0
2	Courtney Bethune	19	0	0	0	20	.000	4-8	0	0
12	Hannah Heacox	6	0	0	0	4	.000	1-2	0	0
24	Courtney Potter	8	0	0	0	6	.000	0-0	0	0
TM	TEAM	4	0	0	0	0	.000	1-2	0	0
	Total	19	56	71	127	647	.087	63-126	17	2
	Opponents	19	23	31	54	395	.058	88-176	6	0

#	Goalie	gp	min	ga	gaavg	saves	save%	w-l-t
1	Lindsey Hibbard	18	1049:13	19	1.09	349	.948	13-2-2
35	Amanda Koep	2	100:50	4	2.38	23	.852	2-0-0
TM	EMPTY NET	4	1:06	0	-	0	.000	0-0-0
	Total	19	1151:09	23	1.20	372	.942	15-2-2
	Opponents	19	1151:09	56	2.92	590	.913	2-15-2

Attendance Summary	GAC	Opponent
Total	1079	1438
Dates/Avg Per Date	11/98	7/205
Neutral Site #/Avg	1/120	

Goals by Period	1st	2nd	3rd	OT	Total
Gustavus Adolphus	12	17	27	0	56
Opponents	5	9	8	1	23

Shots by Period	1st	2nd	3rd	OT	Total
Gustavus Adolphus	208	225	209	5	647
Opponents	125	139	127	4	395

Saves by Period	1st	2nd	3rd	OT	Total
Gustavus Adolphus	120	130	119	3	372
Opponents	196	208	181	5	590

**Gustavus Adolphus Hockey  
Gustavus Adolphus Game Results (as of Feb 05, 2015)  
All games**

<b>Date</b>	<b>Opponent</b>		<b>Score</b>	<b>Shots</b>	<b>Overall</b>	<b>Conf</b>	<b>Time</b>	<b>Att.</b>	<b>Goalie of record</b>
Nov 04	#9 UW-SUPERIOR	W	3-1	29/23	1-0-0	0-0-0	2:08	123	Lindsey Hibbard
* Nov 14	CONCORDIA COLLEGE	W	3-1	42/30	2-0-0	1-0-0	2:05	111	Lindsey Hibbard
* Nov 15	CONCORDIA COLLEGE	W	2-0	44/18	3-0-0	2-0-0	1:54	73	Lindsey Hibbard
* Nov 21	HAMLIN UNIVERSITY	W	6-3	39/11	4-0-0	3-0-0	1:52	143	Amanda Koep
* Nov 22	at Hamline University	W	4-0	47/19	5-0-0	4-0-0	2:00	164	Lindsey Hibbard
Nov 29	at Plattsburgh State	Tot	4-4	26/42	5-0-1	4-0-0	2:12	381	Lindsey Hibbard
Nov 30	vs #5 Middlebury	Lot	2-3	38/28	5-1-1	4-0-0	2:03	120	Lindsey Hibbard
* Dec 05	at St. Olaf	W	7-2	36/12	6-1-1	5-0-0	1:52	163	Lindsey Hibbard
* Dec 06	ST. OLAF	Tot	1-1	41/13	6-1-2	5-0-1	2:06	97	Lindsey Hibbard
Dec 10	at #6 UW-River Falls	W	3-2	22/29	7-1-2	5-0-1	1:58	183	Lindsey Hibbard
Dec 13	UW-STEVENS POINT	W	3-1	42/16	8-1-2	5-0-1	2:02	97	Lindsey Hibbard
Jan 09	ADRIAN	L	0-1	17/32	8-2-2	5-0-1	2:09	57	Lindsey Hibbard
Jan 10	LAKE FOREST	W	2-1	20/20	9-2-2	5-0-1	1:56	85	Amanda Koep
* Jan 16	AUGSBURG	W	5-0	38/10	10-2-2	6-0-1	1:53	79	Lindsey Hibbard
* 01/17/15	at Augsburg	W	2-1	26/19	11-2-2	7-0-1	1:55	222	Lindsey Hibbard
* Jan 23	ST. MARY'S	W	3-2	29/19	12-2-2	8-0-1	1:52	101	Lindsey Hibbard
* Jan 24	at St. Mary's	W	1-0	41/19	13-2-2	9-0-1	1:50	130	Lindsey Hibbard
* Jan 30	CSB	W	3-0	32/18	14-2-2	10-0-1	1:54	113	Lindsey Hibbard
* Jan 31	at CSB	W	2-0	38/17	15-2-2	11-0-1	2:00	195	Lindsey Hibbard

<b>Team Record</b>	<b>W-L-T</b>	<b>Attendance</b>	<b>Dates</b>	<b>Total</b>	<b>Avg.</b>
Overall:	15-2-2	Total:	19	2637	139
Conference:	11-0-1	Home:	11	1079	98
Home:	9-1-1	Away:	7	1438	205
Away:	6-0-1	Neutral:	1	120	120
Neutral:	0-1-0				
Overtime:	0-1-2				