



GUSTAVUS WOMEN'S HOCKEY NOTES 2014-15

Gustavus Sports Information

800 W College Ave, St. Peter, MN 56082
gustavus.edu/athletics
(507) 933-7647 • sportsinfo@gustavus.edu

Women's Hockey Media Contact
Nick Hoelmer, Asst. Sports Information Director
(507) 933-8411 • nhoelmer@gustavus.edu

Follow Gustavus Athletics Online

 Twitter
@GustieAthletics

 Flickr
flickr.com/photos/gogusties

 Facebook
facebook.com/GustieAthletics

 YouTube
youtube.com/gustavusathletics

 Snap Chat
Username: Gusties

 Instagram
@gustieathletics

2014-15 SCHEDULE

DATE	OPPONENT	TIME/RESULT
NOVEMBER		
4	No. 9 UW-SUPERIOR	W 3-1
14	CONCORDIA COLLEGE	W 3-1
15	CONCORDIA COLLEGE	W 2-0
21	HAMLIN UNIVERSITY	W 6-3
22	Hamline University	W 4-0
29	No. 1 Plattsburgh State University	T 4-4 (SL)
30	No. 5 Middlebury College	L 2-3 (OT)
DECEMBER		
5	St. Olaf College	W 7-2
6	ST. OLAF COLLEGE	T 1-1
10	No. 6 UW-River Falls	W 3-2
13	No. 7 UW-STEVENS POINT	W 3-1
JANUARY		
9	NO. 7 ADRIAN COLLEGE	L 0-1
10	LAKE FOREST COLLEGE	W 2-1
16	AUGSBURG COLLEGE	W 5-0
17	Augsburg College	W 2-1
23	SAINT MARY'S UNIVERSITY	W 3-2
24	Saint Mary's University	W 1-0
30	COLLEGE OF SAINT BENEDICT	W 3-0
31	College of Saint Benedict	W 2-0
FEBRUARY		
6	St. Catherine University	W 4-1
7	ST. CATHERINE UNIVERSITY	W 2-0
13	University of St. Thomas	W 5-2
14	UNIVERSITY OF ST. THOMAS	L 2-3
20	BETHEL UNIVERSITY	7 p.m.
21	Bethel University	2 p.m.

HOME GAMES IN BOLD AND CAPS



6 Gustavus Adolphus College

Golden Gusties
14-1-1 MIAC, 18-3-2 Overall
vs.

Bethel University

Royals
7-6-3 MIAC, 12-8-3 Overall



Game 24

Date: Friday, February 20 • **Time:** 7 p.m. • **Location:** Saint Peter, Minn.

Arena: Don Roberts Ice Rink

Live Video: <http://portal.stretchinternet.com/gac/>

Live Stats: <https://gustavus.edu/athletics/whky/LIVE/xlive.htm>

Game 25

Date: Saturday, February 21 • **Time:** 2 p.m. • **Location:** Blaine, Minn.

Arena: Bethel University Arena (National Sports Center)

Live Video: <http://portal.stretchinternet.com/bethel/>

Live Stats: <http://portal.stretchinternet.com/bethel/>

Setting The Scene: Following a series split with the University of St. Thomas this past weekend, the Gustavus Adolphus women's hockey team will be back in action this Friday and Saturday, Feb. 20 and 21, when it takes on Bethel University in a home-home series. Gustavus will host the Royals on Friday in a 7 p.m. game at Don Roberts Ice Rink and travel to Blaine, Minnesota on Saturday afternoon for a 2 p.m. matchup at Bethel University Arena. Gustavus enters the weekend with a record of 14-1-1 in the MIAC and 18-3-2 overall, while Bethel owns a 7-6-3 record in the MIAC and 12-8-3 overall mark.

Last Time Out: This past weekend, Gustavus clinched the regular season MIAC Championship when it earned a series split with St. Thomas. In Friday's home game, the Gusties notched three first period goals and four special teams goals to take home a 5-2 win over the Tommies and clinch the conference championship. Keri Pickel, Lydia Wagner, Carolyn Draayer, Marissa Brandt and Katie Aney all found the net in the victory to help the Gusties clinch their 10th MIAC title in 11 seasons.

On Saturday, Gustavus suffered its first MIAC defeat of the season in a 3-2 loss to St. Thomas at Don Roberts Ice Rink. Senior co-captain Courtney Boucher got the ball rolling for Gustavus early on a power play opportunity when she scored her third goal of the season at the 6:04 mark in the first period. Five minutes later, St. Thomas's Courtney Umland found open ice and tied the game at 1-1. However, Boucher had the answer when she put in her second power play goal of the game with 3:30 remaining in the first period to give Gustavus a 2-1 lead. Play remained scoreless until the third period until Umland found the net again on a power play opportunity 4:41 minutes into the third period. Then, with just 1:53 to go in the game, Umland completed the hat trick when she fired a slap shot from the top of the right circle and past Koep's right glove into the bottom left corner of the net to give St. Thomas the 3-2 advantage and eventually, the win.

Bethel is most recently coming off a series sweep over the College of Saint Benedict. In game one in St. Cloud, the Royals found themselves down 1-0 midway through the second period but scored three unanswered goals the rest of the way to take the 3-1 victory. Hadley Cookson, Kathryn Larson and Kalie Johnson scored Bethel's goals while goaltender Michelle Klimstra made 15 saves.

On Saturday in Blaine, Bethel was outshot 26-21 in the game, but Klimstra made 26 saves, including 15 in the second period alone, to keep Saint Benedict off the scoreboard. Kathryn Larson scored Bethel's final two goals while Kalie Johnson scored the first for Bethel in the 3-0 shutout. The series sweep keeps the Royals in fifth place in the MIAC standings with 17 points, three points ahead of Augsburg and St. Catherine who each have 14. However, Bethel's last two games will come against conference champion Gustavus, while St. Catherine will take on Concordia and Augsburg will compete against last

12 MIAC Championships • 11 NCAA Tournament Appearances

The Match Up Statistical Comparison

Gustavus		Bethel
2.96 (2nd)	Goals For	2.78 (3rd)
1.26 (1st)	Goals Against	1.78 (2nd)
22.5% (1st)	Power Play	10.3% (9th)
87.3% (3rd)	Penalty Kill	91.2% (2nd)
+16 (1st)	Special Teams Net	+6 (3rd)
6.5 (10th)	Penalty Minutes	7.3 (7th)

2014-15 season averages with MIAC ranks (10 teams)

The Series Gustavus vs. Bethel

All-Time Record	34-1-1
Last Meeting	W 3-2
Current Streak	W 1
Coach Mike Carroll	
Overall Record at Gustavus vs. Bethel	349-81-27 34-1-1
Coach Brian Carlson	
Overall Record at Bethel vs. Gustavus	56-36-11 1-11-0
Last Five Seasons	12-1-0

Date	Location	Result
3/1/14*	St. Peter, Minn.	W 3-2
2/22/14	St. Peter, Minn.	L 0-1
2/21/14	Blaine, Minn.	W 3-2
2/28/13*	St. Peter, Minn.	W 3-2
12/8/12	St. Peter, Minn.	W 3-1
11/10/12	Blaine, Minn.	W 3-1
11/9/12	St. Peter, Minn.	W 2-0
3/1/12*	St. Peter, Minn.	W 1-0
11/12/11	St. Peter, Minn.	W 6-3
11/11/11	Blaine, Minn.	W 5-1
3/5/11**	St. Peter, Minn.	W 3-0
11/20/10	Blaine, Minn.	W 2-0
11/19/10	St. Peter, Minn.	W 4-1

* - Denotes MIAC Playoff Game

** - Denotes MIAC Championship Game

place St. Olaf, likely making for a wild conclusion to the regular season for the three squads.

Series Snapshot: This weekend's series marks the 37th and 38th meetings between Gustavus and Bethel in women's hockey. The Gusties hold the advantage in the all-time series with a record of 34-1-1, with their lone loss coming last season on Feb. 22., 2014. The single tie in the series came on Dec. 5, 2008 when the two teams tied 1-1 at Don Roberts Ice Rink.

Last Time They Met: The last time these two teams met was during the MIAC Playoff semifinals on March 1, 2014. After falling behind 2-1 early in the third period, the Gusties came back to score a pair of unanswered goals in the final 13 minutes of the 3-2 victory, which sent them to the MIAC Championship game against St. Thomas.

About The Royals: With a record of 7-6-3 in the MIAC, Bethel currently sits at fifth place in the MIAC standings with 17 points, three ahead of conference foes St. Catherine and Augsburg. A win against the Gusties would guarantee the Royals a spot in this season's MIAC playoffs.

Bethel is led by sophomore forward Kathryn Larson, senior forward Kalie Johnson and junior forward Caroline Kivisto. Larson leads the team in points with 26, goals with 16 and is second with 10 assists. Johnson has tallied 17 points on the year, tied for second on the team, after scoring seven goals and tallying 10 assists, while Kivisto also has 17 points with five goals and 12 assists. First-year Michelle Klimstra is the Royals' primary goalie, as she has started 17-of-23 games and tallied 981:29 minutes. Klimstra is 6-5-3 on the season and has a goals against average of 1.77 after allowing 29 total goals. She also has a .919 save percentage to go along with 330 total saves.

Bethel is just behind the Gusties' in total goals averaged per game with 2.78 and it allows just 1.78 goals per game. The Royals are also particularly strong on the penalty kill, as they are second in the league with a 91.2 percent success rate.

Queens Of The Power Play: With five power play goals each so far this season, Gustie forwards Carolyn Draayer and Katie Aney are tied for first in the MIAC in that category, while Erica Power is ranked third in the MIAC in power play points with eight. As a team, Gustavus leads the league in power play goals with 23. Concordia is next with 18.

No. 100: While Gustavus is known as one of the most successful all-time Division III hockey programs, Saturday's loss to St. Thomas marked the 100th loss in the program's rich history. The Gusties now own an all-time record of 385-100-28, meaning they have lost only 19.4 percent of their games in the history of the program.

Mr. 350?: Coming into the weekend, head coach Mike Carroll has compiled an overall record of 349-81-27, meaning a single win over the Royals would give the Gustie bench master a milestone 350th victory.

Gustavus Embarks On 18th Season Of Women's Hockey: The Gustavus women's hockey team is currently in its 18th season. Founded in 1997, the Gusties have attained an all-time record of 385-100-28, which stands as the second winningest program in all of NCAA Division III women's hockey. The Gustie women have won 12 MIAC titles in the 16 years of women's hockey in the conference. Those 12 titles rank first in front of St. Thomas (3) and Augsburg and Saint Mary's, who each have two. Gustavus has also earned the MIAC Playoff crown a total of 11 times, 10 of which have come in the past 11 years and led to 11 NCAA Tournament appearances.

Wearing The "C": In the 17-year history of the Gustavus women's hockey program, 33 players have earned the honor of being a captain. This year, that number stays the same as two of the 2013-14 captains, Carolyn Draayer and Courtney Boucher, will move into their senior years and accept the same role during their 2014-15 campaign.

Home Grown Talent: Of the 24 players on this year's roster, 22 are natives of Minnesota. The only players who reside outside the State of Hockey are Courtney Bethune, who hails from Fort Frances, Ontario, and Allie Lewis, who is a native of Kearney, Nebraska.

Veteran Squad: Despite losing three of its top five scorers from its 2013-14 squad, Gustavus will return 63 percent of its scoring from last season. Sixteen of the Gusties' 24 players are returners, compared to just eight first-year players. Gustavus will also welcome back three of its four 2013-14 All-MIAC honorees, which include Courtney Boucher, Carolyn Draayer and Allison Eder-Zdechlik.

Gusties In The Polls: Gustavus is ranked sixth in the most recent USCHO.com Division III Women's Hockey Poll, which was released Monday. This week marks the 89th consecutive time that the Gusties have been ranked in the USCHO.com poll.



Gustavus Quick Facts

Location: St. Peter, Minnesota
 Address: 800 West College Ave.
 St. Peter, MN 56082
 Founded: 1862
 Enrollment: 2,455
 Nickname: Golden Gusties
 School Colors: Black and Gold
 Home Ice: Don Roberts Ice Rink
 NCAA Affiliation: NCAA Division III
 Conference: Minnesota Intercollegiate Athletic
 President: Rebecca M. Bergman
 Athletic Director: Tom Brown
 Assistant Athletic Director: Jared Phillips
 Athletic Trainer: Troy Banse
 Equipment Manager: Jed Friedrich
 Sports Information Director: Ethan Armstrong
 Asst. Sports Information Director: Nick Hoelmer

Gustavus Hockey Quick Facts

2013-14 Record: 17-8-2
 2013-14 MIAC Record/Finish: 14-4-0/2nd
 All-Time Record: 385-100-28
 All-Time MIAC Record: 255-28-12
 MIAC Championships: 12
 Returners/First-years: 16/8
 All-MIAC Honorees Returning/Lost: 3/1

Gustavus Under Head Coach Mike Carroll

Year	Overall	MIAC	Conference Finish
1999-00	18-10-1	12-5-1	3rd
2000-01	23-6-1	16-2-0	1st
2001-02	23-5-2	18-0-1	1st
2002-03	14-9-4	11-4-3	3rd
2003-04	22-6-0	16-2-0	2nd
2004-05	25-4-1	17-1-0	1st
2005-06	22-5-2	17-0-1	1st
2006-07	25-3-0	17-1-0	1st
2007-08	25-3-0	18-0-0	1st
2008-09	22-2-4	16-0-2	1st
2009-10	26-6-2	14-3-1	1st
2010-11	22-5-3	14-2-2	1st
2011-12	24-4-2	16-1-1	1st
2012-13	27-2-1	18-0-0	1st
2013-14	17-8-2	14-4-0	2nd
2014-15	18-3-2	14-1-1	
Totals	349-81-27	248-26-13	11 MIAC Titles

Around The League

MIAC Standings

School	Points	MIAC	Overall
Gustavus ^ *	29	14-1-1	18-3-2
St. Thomas ^	24	10-2-4	11-8-4
Concordia ^	21	9-4-3	10-10-3
Saint Mary's	18	8-6-2	10-10-3
Bethel	17	7-6-3	12-8-3
Augsburg	14	5-7-4	7-11-5
St. Catherine	14	5-7-4	7-11-5
Saint Benedict	12	5-9-2	6-12-2
Hamline	8	3-11-2	5-16-2
St. Olaf	3	0-13-3	1-19-3

*Regular Season Champ | ^ Playoff Qualifier

This Weekend in the MIAC

Friday, February 20

Bethel at Gustavus | 7 p.m.

Saint Mary's at Hamline | 7 p.m.

St. Olaf at Augsburg | 7 p.m.

Concordia at St. Catherine | 7 p.m.

St. Thomas at Saint Benedict | 7:30 p.m.

Saturday, February 21

Gustavus at Bethel | 2 p.m.

Hamline at Saint Mary's | 2 p.m.

Concordia at St. Catherine | 2 p.m.

Augsburg at St. Olaf | 2 p.m.

Saint Benedict at St. Thomas | 2 p.m.

MIAC Athlete-of-the-Week



Kelsey Vandegrift

Sr., Defender

St. Paul, Minn./Central

Opponent	G	A	P
Saint Mary's	2	0	2
Saint Mary's	2	0	2

USCHO.com Div. III Poll

Rank	School	Overall	Points	Last
1	Elmira (15)	21-1-1	150	1
2	Plattsburgh	19-2-2	134	2
3	Middlebury	18-2-3	115	3
4	Adrian	18-1-4	90	6
5	Norwich	15-4-3	87	4
6	Gustavus Adolphus	18-3-2	82	5
7	Wisconsin-River Falls	20-3-1	73	7
8	Wisconsin-Stevens Point	16-7-2	32	8
9	Amherst	15-3-4	23	9
10	St. Norbert	14-6-3	13	10



Gustavus Record When:

At home	10-2-1
On the road	8-0-1
Neutral Site	0-1-0
vs. MIAC opponents	14-1-1
vs. Non-conference opponents	4-2-1
vs. Top 10 opponents	3-2-1
GAC scores 4 or more goals	7-0-1
GAC scores 3 goals	6-0-0
GAC scores 2 or fewer goals	6-3-1
GAC scores first	12-2-1
Opponent scores first	6-1-1
GAC leads after 1st period	6-2-1
Opponent leads after 1st period	3-0-0
Tied after 1st period	7-1-1
GAC leads after 2nd period	10-1-1
Opponent leads after 2nd period	2-0-1
Tied after 2nd period	5-2-0
In overtime	0-1-1
Games decided by one goal	6-3-0
Games decided by two goals	6-0-0
Games decided by three goals	4-0-0
Games decided by four or more	3-0-0
GAC scores on the power play	9-1-0
GAC scoreless on the power play	6-2-2
GAC scores two or more PP goals	7-1-0
GAC outshoots opponent	16-2-1
GAC outshot by opponent	1-1-1
Shots equal	1-0-0
Tuesday Games	1-0-0
Wednesday Games	1-0-0
Friday Games	8-1-0
Saturday Games	8-1-2
Sunday Games	0-1-0
In November	5-1-1
In December	3-0-1
In January	7-1-0
In February	3-1-0
In March	0-0-0
Following a win	14-2-2
Following a loss	2-0-0
Following a tie	1-1-0
Night games	11-1-1
Day games	7-2-1

Who's Hot

Scoring vs. UST

Player	Games	Goals	Assists	Points	Point Streak
Erica Power	2	0	3	3	-
Courtney Boucher	2	2	1	3	2
Diana Draayer	2	0	2	2	1

Goaltending vs. UST

Player	Record	Minutes	GA	Saves	Scoreless Str.
Lindsey Hibbard	1-0-0	60:00	2	24	2:00
Amanda Koep	0-1-0	59:39	3	19	1:53

2014-15 Season By The Numbers

Largest Victory	5 (2X) Last: vs. Augsburg (1/16/15)
Largest Defeat	1 (3X) Last: vs. St. Thomas (2/14/15)
Largest First Period Lead	2 (3X) Last: vs. St. Thomas (2/14/15)
Largest First Period Deficit	1 (4x) last: vs. St. Catherine (2/6/15)
Largest Second Period Lead	4: vs. St. Thomas (2/14/15)
Largest Second Period Deficit	2 vs. Plattsburgh (11/29/14)
Most Goals Scored	7 vs. St. Olaf (12/5/14)
Fewest Goals Scored	0 vs. Adrian (1/9/15)
Most Goals Allowed	4 vs. Plattsburgh (11/29/14)
Fewest Goals Allowed	0 (5x) Last: vs. St. Catherine (2/7/15)
Largest Lead	5 (2X) Last: vs. Augsburg (1/16/15)
Largest Lead On Road	5 vs. St. Olaf (12/5/14)
Largest Lead At Home	5 vs. Augsburg (1/16/15)
Largest Blown Lead	2 vs. St. Thomas (2/14/15)
Largest Deficit	3 vs. Plattsburgh (11/29/14)
Largest Deficit On Road	3 vs. Plattsburgh (11/29/14)
Largest Deficit At Home	1 (2x) Last: vs. St. Thomas (2/14/15)
Largest Comeback-Win/Tie	3 vs. Plattsburgh=Tie (11/29/14)



Last Time It Happened

COMEBACKS

GAC won when trailing after two periods

December 13, 2014 vs. UW-Stevens Point. Trailed 1-0 early in the third, Gustavus scored three consecutive goals to capture a 3-1 victory.

Opponent won when trailing after two periods

Feb. 1, 2014 vs. Saint Benedict. Blazers trailed 2-1 after two periods, but scored three in the third to capture a 4-2 win.

Overcame 1-goal deficit and won

GAC: February 6, 2015 vs. St. Catherine University. Trailed 1-0 early in the first, Gustavus won 4-1.

OPP: Nov. 30, 2014 vs. Middlebury. Trailed 1-0 in first period, won 3-2

Overcame 2-goal deficit and won

GAC: Feb. 29, 2013 vs. Bethel. Gusties trailed 2-0 after two, but came back with three goals in the third for a 3-2 win.

OPP: Feb. 1, 2014 vs. Saint Benedict. Blazers trailed 2-0 in second period, but scored four unanswered goals to capture a 4-2 win.

Overcame a 3-goal deficit and won

GAC: March 1, 1998 vs. University of Minnesota Club. Gusties scored one in the second and three in the third to win 4-3.

OPP: Never

OVERTIME GAMES

Won overtime game

GAC: March 1, 2012 vs Bethel. Courtney Boucher scored 6:25 in to overtime to win 1-0 and advance to the MIAC Championship.

OPP: Nov. 30, 2014 vs. Middlebury

Tied overtime game

Nov. 29, 2014 at Plattsburgh (4-4)

SERIES SWEEPS

Swept a 2-game regular season home-home series

GAC: Feb. 6 and 7, 2015 vs. St. Catherine. (4-1 Friday in St. Paul, 1-0 Saturday in St. Peter)

OPP: Jan. 31-Feb. 1, 2014 vs. Saint Benedict. (4-2 Friday night in St. Peter, 4-2 again on Saturday in St. Cloud)

Swept a 2-game regular season home series

GAC: Nov. 14-15, 2014 vs. Concordia. (3-1, 2-0)

OPP: Never

Swept a 2-game regular season away series

GAC: Nov. 15-16, 2013 at Concordia. (4-1, 2-0)

OPP: Never. (MIAC Playoffs: March 10-11, 2000 at Augsburg. (4-1, 2-1)

SHUTOUTS

Last Shutout

GAC: Feb. 7, 2015 vs. St. Catherine, 1-0

OPP: Jan. 9, 2015 vs. Adrian, 1-0

Last Home Shutout

GAC: Feb. 7, 2015 vs. St. Catherine, 1-0

OPP: Jan. 9, 2015 vs. Adrian 1-0

Last Road Shutout

GAC: Jan. 31, 2015 vs. Saint Benedict, 2-0

OPP: Mar. 8, 2014 vs. St. Thomas 2-0

Scoreless Ties (2 in program history)

Jan. 14, 2010 vs. Trinity (Conn.)

Feb. 17, 2009 at UW-Stevens Point

EXTRA ATTACKER GOALS

Scored an extra attacker goal

GAC: Nov. 30, 2014 vs. Middlebury. Lydia Wagner scored w/ 39 sec. left

OPP: Jan. 9, 2005 at UW-River Falls. Gusties won 6-4.

SHORTHANDED GOALS

Scored a shorthanded goal

GAC: Feb. 13, 2015 at St. Thomas. Carolyn Draayer scored shorthanded goal in first period to put Gustavus up 3-1.

OPP: Feb. 13, 2015 at St. Thomas. Tara Baago scored shorthanded in the first period of a 5-2 win for the Gusties.

Scored two shorthanded goals

GAC: Nov. 22, 2008 at St. Olaf. Melissa Mackley scored two short-handed goals in the third period.

Gusties won 4-2.

OPP: Never

EMPTY NET GOALS

Scored an empty net goal

GAC: Feb. 6, 2015 vs. St. Catherine. Emily Reibert scored EN at 15:30 of a 4-1 win for the Gusties in St. Paul.

OPP: Feb. 15, 2014 vs. St. Thomas. Karina Marette scored EN at 19:47 of a 3-1 Tommie win in Mendota Heights.

TEAM GOALS IN A PERIOD

Team scored 5 or more goals in a period

GAC: Feb. 23, 2013 vs. Saint Benedict. The Gusties scored six goals in the second period on their way to an 8-2 victory in St. Peter.

OPP: Dec. 3, 1998 at the University of Minnesota (Mariucci Arena. Gophers scored five goals in the first period and won 8-1.

PENALTY SHOTS

Scored on a penalty shot

GAC: Never.

OPP: March 19, 2011 vs. Middlebury (NCAA 3rd Place Game, Rochester, N.Y.). Penalty shot goal scored after Lindsey Hjelm checking penalty in the second period. Middlebury won 5-0.

PENALTIES

Not penalized

GAC: Jan. 24, 2015 at Saint Mary's. Gustavus won 1-0.

OPP: Dec. 2, 2000 at St. Catherine. St. Kate's won 4-3.

Neither team was penalized

Jan. 30, 1998 at Saint Mary's. Gusties won 6-2.

HAT TRICKS

Last individual 3-goal game

GAC: Jan. 26, 2013 vs. Concordia. Lindsey Hjelm scored three goals (all even) in a 5-1 Gustavus win in St. Peter.

OPP: Jan. 10, 2014 at UW-Stevens Point. Cassandra Salmen scored three goals in the third period of a 5-2 Pointer win.

Last individual 4-goal game

GAC: Dec. 2, 2011 at Augsburg. Allie Schwab scored three PP goals and an even goal in a 9-0 shutout.

OPP: Never.

All goals scored by one player (3+ Goals)

GAC: Never.

OPP: Dec. 2, 2006 at Hamline. Melanie Levielle scored all three goals in a 4-3 loss.

SHOTS ON GOAL

Fewer than 15 shots in a game

GAC: Dec. 3, 1998 at the University of Minnesota. 11 shots. Minnesota won 8-1.

OPP: Feb. 7, 2015 vs. St. Catherine, 12 shots. Gustavus won 1-0.

Fewer than 20 shots in a game

GAC: Jan. 9, 2015 vs. Adrian, 17 shots. Gustavus lost 1-0.

OPP: Feb. 7, 2015 vs. St. Catherine, 12 shots. Gustavus won 1-0.

40 or more shots in a game

GAC: Feb. 13, 2015 vs. St. Thomas, 40 shots. Gustavus won 5-2.

OPP: Nov. 29, 2014 at Plattsburgh, 42 shots. Tied 4-4.

50 or more shots in a game

GAC: Feb. 16, 2013 vs. St. Olaf, 51 shots. Gustavus won 6-2.

OPP: Nov. 23, 1998 vs. the University of Minnesota: 51 shots. Minnesota won 6-0.

60 or more shots in a game

GAC: Feb. 15, 2013 at St. Olaf, 61 shots. Gustavus won 7-4.

OPP: Feb. 5, 1998 at Boston College, 65 shots. BC won 10-1.

SINGLE GAME POINTS

Player had four points in a game

GAC: Dec. 5, 2014 at St. Olaf. Erica Power scored two goals, two assists. Diana Draayer scored one goal, three assists in same game.

OPP: Mar. 18, 2011 vs. Norwich (NCAA Semifinals). Julie Fortier scored three goals with an assist in a 5-4 Norwich victory.

Player had five points in a game

GAC: Dec. 2, 2011 at Augsburg. Allie Schwab scored three PP goals and an even goal with an assist in a 9-0 shutout.

OPP: Mar. 18, 2005 vs. Middlebury. (NCAA Semifinals) Lorna Griffs scored two goals with three assists in a 7-3 Middlebury win.

Player had six or more points in a game

GAC: Feb. 11, 2005 at St. Catherine. Andrea Peterson scored two goals with six assists in a 13-0 win. (Most individual points in a game in program history)

OPP: Jan. 30, 1999 at Middlebury. Michelle Labbe scored three goals with three assists in a 8-0 Middlebury win.





Carroll At A Glance

Hometown

- Edina, Minnesota

Education

- Bachelor's Degree: Recreation, Parks, and Leisure Services (Minnesota State, Mankato '82)

Family

- Wife: Terri
- Children: Matt and Mike

Coaching

- 1983-84 – Assistant Coach, University of St. Thomas
- 1984-85 – Assistant Coach, Fergus Falls High School
- 1986-87 – Head Coach, Fergus Falls Community College
- 1990-99 – Head Coach, Mankato West High School
- 1999-Present – Head Coach, Gustavus Adolphus College

Years At Gustavus: 15

All-time Record: 349-81-27

All-time MIAC Record: 248-26-13

MIAC Titles: 11

MIAC Playoff Titles: 11

NCAA Tournaments: 11

NCAA Tournament Record: 8-16-0

Final Fours: 7

Most Wins In A Season: 27 (2012-13)

Fewest Wins In A Season: 14 (2002-03)

*** All-time winningest coach in Gustavus women's hockey history.

Head Coach Mike Carroll

Mike Carroll is in his 16th season as the women's head hockey coach at Gustavus. Within his tenure behind the Gustie bench, Carroll has turned Gustavus women's hockey into one of the most successful programs in NCAA Division III. He has compiled an overall record of 349-81-27 in 15 seasons and has the most coaching victories in the history of the program.

Last season, the Gustavus women's hockey team saw its reign atop the Minnesota Intercollegiate Athletic Conference (MIAC) come to an end. The Gusties finished second in the final conference standings with 28 points at 14-4-0, ending their streak of consecutive MIAC Championships at nine. After defeating Bethel 3-2 in the MIAC Playoff Semifinals, Gustavus's season concluded with a 2-0 loss to regular season champion St. Thomas in the MIAC Playoff Championship. The postseason defeat suffered to the Tommies ended Head Coach Mike Carroll's run of 10 consecutive MIAC Playoff titles and trips to the NCAA Tournament. The Gusties finished the year with an overall record of 17-8-2.

Carroll has directed the Gusties to 11 MIAC regular season titles (2000-01, 2001-02, 2004-05, 2005-06, 2006-07, 2007-08, 2008-09, 2009-10, 2010-11, 2011-12, 2012-13) and has been named the MIAC Coach-of-the-Year six times (2001-02, 2003-04, 2004-05, 2005-06, 2010-11, 2012-13). In addition to coaching 34 players who have earned All-Conference honors 59 times, he has coached five MIAC Players-of-the-Year in Sarah Garrison, Andrea Peterson, Stefanie Ubl, Allie Schwab, Lindsey Hjelm. Carroll has also worked with 13 players who have earned AHCA All-America distinction 21 times and two American Hockey Coaches Association Players-of-the-Year, including four-time MIAC Player-of-the-Year and four-time All-American Andrea Peterson.

Prior to coming to Gustavus, Carroll served as the head boys' hockey coach at Mankato West High School from 1991 to 1999. Carroll's college coaching resume included a stint as head men's hockey coach at Fergus Falls Community College from 1986 to 1987 as well as a season as the assistant men's coach at the University of St. Thomas in 1983.

Carroll, an Edina, Minnesota native, competed in hockey and baseball at Mankato State. After graduating with a degree in municipal recreation in 1982, Carroll played professional baseball in the Montreal Expos organization for two years.

In addition to his hockey coaching duties at Gustavus, Carroll is also the head coach of the Golden Gustie baseball team. Mike and his wife, Terri, live in Mankato and have two sons, Matt and Mike.

2014-15 Roster

Breakdown

Returners (16)

Courtney Bethune
 Courtney Boucher
 Marissa Brandt
 Carolyn Draayer
 Allison Eder-Zdechlik
 Emily Gustafson
 Hannah Heacox
 Lindsey Hibbard
 Callie Johnson
 Leah Johnson
 Amanda Koep
 Allie Lewis
 Keri Pickel
 Courtney Potter
 Emily Reibert
 Lydia Wagner

Newcomers (8)

Katie Aney
 Diana Draayer
 Katy Fuller
 Laura Johnson
 Kaitlyn Klein
 Erica Power
 Ashley Ritten
 Rachel Skoglund

By Class

Seniors (5)

Courtney Boucher
 Marissa Brandt
 Carolyn Draayer
 Leah Johnson
 Keri Pickel

Juniors (4)

Allison Eder-Zdechlik
 Lindsey Hibbard
 Amanda Koep
 Emily Reibert

Sophomores (7)

Courtney Bethune
 Emily Gustafson
 Hannah Heacox
 Callie Johnson
 Allie Lewis
 Courtney Potter
 Lydia Wagner

First-Years (8)

Katie Aney
 Diana Draayer
 Katy Fuller
 Laura Johnson
 Kaitlyn Klein
 Erica Power
 Ashley Ritten
 Rachel Skoglund

2014-15 Numerical Roster

No.	Name	Yr.	Pos.	Hgt.	Hometown/High School
1	Lindsey Hibbard	Jr.	G	5-6	Princeton, Minn./Princeton
2	Courtney Bethune	So.	D	5-8	Fort Frances, Ont./Warroad
3	Emily Reibert	Jr.	F	5-5	Inver Grove Heights, Minn./South St. Paul
4	Diana Draayer	Fy.	F	5-5	Deephaven, Minn./Minnetonka
5	Rachel Skoglund	Fy.	D	5-2	Forest Lake, Minn./Forest Lake
6	Emily Gustafson	So.	F	5-1	Esco, Minn./Esco
7	Lydia Wagner	So.	D	5-7	Zumbrota, Minn./Zumbrota-Mazeppa
8	Allison Eder-Zdechlik	Jr.	F	5-4	Stillwater, Minn./Stillwater
9	Erica Power	Fy.	F	5-6	Lakeville, Minn./Apple Valley
10	Courtney Boucher	Sr.	F/D	5-7	Hastings, Minn./Hastings
11	Keri Pickel	Sr.	F	5-2	Rochester, Minn./Mayo
12	Hannah Heacox	So.	F	5-3	Stillwater, Minn./Stillwater
13	Katie Aney	Fy.	F	5-8	Rochester, Minn./Century
14	Katy Fuller	Fy.	F	5-5	Minneapolis, Minn./Southwest
15	Leah Johnson	Sr.	F	5-4	Chanhassen, Minn./Chaska
17	Callie Johnson	So.	F	5-7	Detroit Lakes, Minn./Detroit Lakes
18	Carolyn Draayer	Sr.	F	5-6	Deephaven, Minn./Minnetonka
19	Allie Lewis	So.	F	5-3	Kearney, Neb./Shattuck-St. Mary's
20	Kaitlyn Klein	Fy.	F	5-6	Plymouth, Minn./Wayzata
22	Marissa Brandt	Sr.	F/D	5-6	Vadnais Heights, Minn./Hill-Murray
23	Laura Johnson	Fy.	D	5-5	Chanhassen, Minn./Chanhassen
24	Courtney Potter	So.	D	5-2	Dayton, Minn./Champlin Park
33	Ashley Ritten	Fy.	G	5-6	Robbinsdale, Minn./Robbinsdale Armstrong
35	Amanda Koep	Jr.	G	5-5	St. Michael, Minn./St. Michael-Albertville

Head Coach: Mike Carroll (16th season)

Assistant Coaches: Amanda Trunzo, Steve Carroll

Alphabetical Roster/Pronunciation Guide

NO.	NAME	Pronunciation
13	Aney, Katie	
2	Bethune, Courtney	beth-OON
10	Boucher, Courtney	BOO-shay
22	Brandt, Marissa	
18	Draayer, Carolyn	DRAY-er
4	Draayer, Diana	DRAY-er
8	Eder-Zdechlik, Allison	ee-der-ZED-lick
14	Fuller, Katy	
6	Gustafson, Emily	GUST-uhf-son
12	Heacox, Hannah	HEE-cox
1	Hibbard, Lindsey	
23	Johnson, Laura	
15	Johnson, Leah	
17	Johnson, Callie	
20	Klein, Kaitlyn	
35	Koep, Amanda	COPE
19	Lewis, Allie	
11	Pickel, Keri	
9	Power, Erica	
24	Potter, Courtney	
3	Reibert, Emily	RYE-bert
33	Ritten, Ashley	
5	Skoglund, Rachel	SKOHG-lund
7	Wagner, Lydia	

Player Profiles



#1 Lindsey Hibbard
Jr., Goaltender
Princeton, Minn./Princeton

Season Numbers

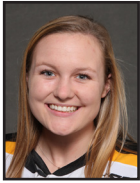
GP	GAA	Save Pct.	Record
21	1.07	.947	16-2-2



#2 Courtney Bethune
So., Defender
Fort Frances, Ont./Warroad

Season Numbers

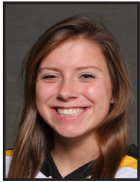
GP	Goals	Assists	Points
23	0	0	0



#3 Emily Reibert
Jr., Forward
Inver Grove Heights, Minn./South St. Paul

Season Numbers

GP	Goals	Assists	Points
22	7	2	9



#4 Diana Draayer
Fy., Forward
Deephaven, Minn./Minnetonka

Season Numbers

GP	Goals	Assists	Points
23	3	10	13



#5 Rachel Skoglund
Fy., Defender
Forest Lake, Minn./Forest Lake

Season Numbers

GP	Goals	Assists	Points
22	2	5	7



#6 Emily Gustafson
So., Forward
Esko, Minn./Esko

Season Numbers

GP	Goals	Assists	Points
21	0	2	2



#7 Lydia Wagner
So., Defender
Zumbrota, Minn./Zumbrota-Mazeppa

Season Numbers

GP	Goals	Assists	Points
18	3	3	6



#8 Allison Eder-Zdechlik
Jr., Forward
Stillwater, Minn./Stillwater

Season Numbers

GP	Goals	Assists	Points
19	9	11	20



#9 Erica Power
Fy., Forward
Lakeville, Minn./Apple Valley

Season Numbers

GP	Goals	Assists	Points
23	8	16	24

Player Profiles



#10 Courtney Boucher
Sr., Forward/Defender
Hastings, Minn./Hastings

Season Numbers

GP	Goals	Assists	Points
23	4	8	12



#11 Keri Pickel
Sr., Forward
Rochester, Minn./Mayo

Season Numbers

GP	Goals	Assists	Points
22	5	2	7



#12 Hannah Heacox
So., Forward
Stillwater, Minn./Stillwater

Season Numbers

GP	Goals	Assists	Points
7	0	0	0



#13 Katie Aney
Fy., Forward
Rochester, Minn./Century

Season Numbers

GP	Goals	Assists	Points
23	7	2	9



#14 Katy Fuller
Fy., Forward
Minneapolis, Minn./Southwest

Season Numbers

GP	Goals	Assists	Points
23	2	3	5



#15 Leah Johnson
Sr., Forward
Chanhassen, Minn./Chanhassen

Season Numbers

GP	Goals	Assists	Points
19	0	2	2



#17 Callie Johnson
So., Forward
Detroit Lakes, Minn./Detroit Lakes

Season Numbers

GP	Goals	Assists	Points
5	0	1	1



#18 Carolyn Draayer
Sr., Forward
Deephaven, Minn./Minnetonka

Season Numbers

GP	Goals	Assists	Points
23	11	5	16

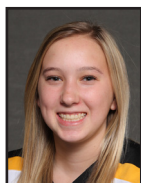


#19 Allie Lewis
So., Forward
Kearney, Neb./Shattuck-St. Mary's

Season Numbers

GP	Goals	Assists	Points
23	0	2	2

Player Profiles



#20 Kaitlyn Klein
 Fr., Forward
 Plymouth, Minn./Wayzata

Season Numbers

GP	Goals	Assists	Points
23	4	3	7



#22 Marissa Brandt
 Sr., Forward/Defender
 Vadnais Heights, Minn./Hill-Murray

Season Numbers

GP	Goals	Assists	Points
23	3	2	5



#23 Laura Johnson
 Fr., Defender
 Chanhausen, Minn./Chanhausen

Season Numbers

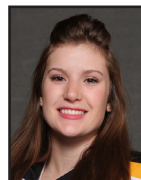
GP	Goals	Assists	Points
19	0	5	5



#24 Courtney Potter
 So., Defender
 Dayton, Minn./Champlin Park

Season Numbers

GP	Goals	Assists	Points
10	0	0	0



#33 Ashley Ritten
 Fr., Goaltender
 Robbinsdale, Minn./Robbinsdale Armstrong

Season Numbers

GP	GAA	Save Pct.	Record
0	---	---	0-0-0



#35 Amanda Koep
 Jr., Goaltender
 St. Michael, Minn./St. Michael-Albertville

Season Numbers

GP	GAA	Save Pct.	Record
3	2.62	.857	2-1-0

**Gustavus Adolphus Hockey
Gustavus Adolphus Overall Team Statistics (as of Feb 18, 2015)
All games**

Overall: 18-3-2 Conf: 14-1-1 Home: 10-2-1 Away: 8-0-1 Neut: 0-1-0

TEAM STATISTICS	GAC	OPP
SHOT STATISTICS		
Goals-Shot attempts	68-779	29-467
Shot pct.	.087	.062
Goals/Game	3.0	1.3
Shots/Game	33.9	20.3
Assists	84	40
POWER PLAYS		
Goals-Power Plays	23-95	9-63
Conversion Percent	.242	.143
Shot Attempts	175	85
Shot Percent	.131	.106
SHORT-HANDED		
Goals-Shot attempts	3-17	1-25
Shot Percent	.176	.040
GOAL BREAKDOWN		
Total Goals	68	29
Power Play	23	9
Short-handed	3	1
Empty net	2	0
Penalty	0	0
Unassisted	12	4
Overtime	0	1
Shootout	0	0
Delayed Penalty	0	0
PENALTIES		
Number	75	105
Minutes	150	210
Penalties/Game	3.3	4.6
Pen minutes/Game	6.5	9.1
Minor	75	105
Major	0	0
10-minute Misconduct	0	0
Game Misconduct	0	0
Gross Misconduct	0	0
Match	0	0
FACEOFFS (W-L)		
Faceoff W-L Pct.	.611	.389
SHOOTOUTS (Made-Att)		
	1-4	2-4
ATTENDANCE		
Total	1333	1763
Dates/Avg Per Date	13/103	9/196
Neutral Site #/Avg	1/120	

Goals by Period	1st	2nd	3rd	OT	Total
Gustavus Adolphus	17	22	29	0	68
Opponents	8	9	11	1	29

Shots by Period	1st	2nd	3rd	OT	Total
Gustavus Adolphus	256	269	249	5	779
Opponents	158	153	152	4	467

Saves by Period	1st	2nd	3rd	OT	Total
Gustavus Adolphus	150	144	141	3	438
Opponents	239	247	219	5	710

Gustavus Adolphus Hockey
Gustavus Adolphus Category Leaders (as of Feb 18, 2015)
All games

##	Points	GP	G	A	Pts	Sh
9	Erica Power	23	8	16	24	80
8	A. Eder-Zdechlik	19	9	11	20	67
18	Carolyn Draayer	23	11	5	16	98
4	Diana Draayer	23	3	10	13	46
10	Courtney Boucher	23	4	8	12	86
13	Katie Aney	23	7	2	9	51
3	Emily Reibert	22	7	2	9	42
11	Keri Pickel	22	5	2	7	30
20	Kaitlyn Klein	23	4	3	7	42
5	Rachel Skoglund	22	2	5	7	36

##	Goals	GP	G	A	Pts	Sh
18	Carolyn Draayer	23	11	5	16	98
8	A. Eder-Zdechlik	19	9	11	20	67
9	Erica Power	23	8	16	24	80
13	Katie Aney	23	7	2	9	51
3	Emily Reibert	22	7	2	9	42
11	Keri Pickel	22	5	2	7	30
10	Courtney Boucher	23	4	8	12	86
20	Kaitlyn Klein	23	4	3	7	42
4	Diana Draayer	23	3	10	13	46
7	Lydia Wagner	18	3	3	6	35

##	Power-Play Goals	GP	PPG
18	Carolyn Draayer	23	5
13	Katie Aney	23	5
22	Marissa Brandt	23	2
7	Lydia Wagner	18	2
10	Courtney Boucher	23	2
9	Erica Power	23	2
4	Diana Draayer	23	2

##	Short-Handed Goals	GP	SHG
8	A. Eder-Zdechlik	19	2
18	Carolyn Draayer	23	1

##	Game-Winning Goals	GP	GWG
18	Carolyn Draayer	23	4
9	Erica Power	23	3
20	Kaitlyn Klein	23	2
8	A. Eder-Zdechlik	19	2
13	Katie Aney	23	2

##	Plus/Minus	GP	+/-
8	A. Eder-Zdechlik	19	+20
9	Erica Power	23	+17
10	Courtney Boucher	23	+16
2	Courtney Bethune	23	+11
5	Rachel Skoglund	22	+9
23	Laura Johnson	19	+8
18	Carolyn Draayer	23	+7
11	Keri Pickel	22	+7
4	Diana Draayer	23	+6
3	Emily Reibert	22	+6

##	Assists	GP	G	A	Pts	Sh
9	Erica Power	23	8	16	24	80
8	A. Eder-Zdechlik	19	9	11	20	67
4	Diana Draayer	23	3	10	13	46
10	Courtney Boucher	23	4	8	12	86
18	Carolyn Draayer	23	11	5	16	98
5	Rachel Skoglund	22	2	5	7	36
23	Laura Johnson	19	0	5	5	32
20	Kaitlyn Klein	23	4	3	7	42
7	Lydia Wagner	18	3	3	6	35
14	Katy Fuller	23	2	3	5	36

##	Shots	GP	G	A	Pts	Sh	Sh%
18	Carolyn Draayer	23	11	5	16	98	.112
10	Courtney Boucher	23	4	8	12	86	.047
9	Erica Power	23	8	16	24	80	.100
8	A. Eder-Zdechlik	19	9	11	20	67	.134
13	Katie Aney	23	7	2	9	51	.137
4	Diana Draayer	23	3	10	13	46	.065
3	Emily Reibert	22	7	2	9	42	.167
20	Kaitlyn Klein	23	4	3	7	42	.095
5	Rachel Skoglund	22	2	5	7	36	.056
14	Katy Fuller	23	2	3	5	36	.056

##	Shot Pct.	GP	G	A	Pts	Sh	Sh%
22	Marissa Brandt	23	3	2	5	17	.176
11	Keri Pickel	22	5	2	7	30	.167
3	Emily Reibert	22	7	2	9	42	.167
13	Katie Aney	23	7	2	9	51	.137
8	A. Eder-Zdechlik	19	9	11	20	67	.134
18	Carolyn Draayer	23	11	5	16	98	.112
9	Erica Power	23	8	16	24	80	.100
20	Kaitlyn Klein	23	4	3	7	42	.095
7	Lydia Wagner	18	3	3	6	35	.086
4	Diana Draayer	23	3	10	13	46	.065

##	Penalties	GP	Pen	Min
10	Courtney Boucher	23	9	18
23	Laura Johnson	19	8	16
4	Diana Draayer	23	7	14
3	Emily Reibert	22	7	14
13	Katie Aney	23	5	10
14	Katy Fuller	23	5	10
7	Lydia Wagner	18	4	8
2	Courtney Bethune	23	4	8
18	Carolyn Draayer	23	4	8
5	Rachel Skoglund	22	3	6

##	Penalty Minutes	GP	Pen	Min
10	Courtney Boucher	23	9	18
23	Laura Johnson	19	8	16
4	Diana Draayer	23	7	14
3	Emily Reibert	22	7	14
14	Katy Fuller	23	5	10
13	Katie Aney	23	5	10
2	Courtney Bethune	23	4	8
7	Lydia Wagner	18	4	8
18	Carolyn Draayer	23	4	8
8	A. Eder-Zdechlik	19	3	6

**Gustavus Adolphus Hockey
Gustavus Adolphus Combined Team Statistics (as of Feb 18, 2015)
All games**

Date	Opponent	Score	Att.
Nov 04	#9 UW-SUPERIOR	w 3-1	123
* Nov 14	CONCORDIA COLLEGE	w 3-1	111
* Nov 15	CONCORDIA COLLEGE	w 2-0	73
* Nov 21	HAMLIN UNIVERSITY	w 6-3	143
* Nov 22	at Hamline University	w 4-0	164
Nov 29	at Plattsburgh State	Tot 4-4	381
Nov 30	vs #5 Middlebury	Lot 2-3	120
* Dec 05	at St. Olaf	w 7-2	163
* Dec 06	ST. OLAF	Tot 1-1	97
Dec 10	at #6 UW-River Falls	w 3-2	183
Dec 13	UW-STEVENS POINT	w 3-1	97
Jan 09	ADRIAN	L 0-1	57
Jan 10	LAKE FOREST	w 2-1	85
* Jan 16	AUGSBURG	w 5-0	79
* 01/17/15	at Augsburg	w 2-1	222
* Jan 23	ST. MARY'S	w 3-2	101
* Jan 24	at St. Mary's	w 1-0	130
* Jan 30	CSB	w 3-0	113
* Jan 31	at CSB	w 2-0	195
* Feb 06	at St. Catherine	w 4-1	125
* Feb 07	ST. CATHERINE	w 1-0	111
* Feb 13	at UST-WOM	w 5-2	200
* Feb 14	ST. THOMAS	L 2-3	143

TEAM STATISTICS	GAC	OPP
SHOT STATISTICS		
Goals-Shot attempts	68-779	29-467
Shot pct.	.087	.062
Goals/Game	3.0	1.3
Shots/Game	33.9	20.3
POWER PLAYS		
Goals-Power Plays	23-95	9-63
Conversion Percent	.242	.143
Shot Attempts	175	85
Shot Percent	.131	.106
SHORT-HANDED		
Goals-Shot attempts	3-17	1-25
Shot Percent	.176	.040
GOAL BREAKDOWN		
Power Play	23	9
Short-handed	3	1
Empty net	2	0
Penalty	0	0
Unassisted	12	4
Overtime	0	1
Shootout	0	0
Delayed Penalty	0	0
PENALTIES		
Number	75	105
Minutes	150	210
Penalties/Game	3.3	4.6
Pen minutes/Game	6.5	9.1
FACEOFFS (W-L)		
Faceoff W-L Pct.	726-462	462-726
Faceoff W-L Pct.	.611	.389
SHOOTOUTS (Made-Att)		
	1-4	2-4

Record:	Overall	Home	Away	Neutral
ALL GAMES	18-3-2	10-2-1	8-0-1	0-1-0
CONFERENCE	14-1-1	7-1-1	7-0-0	0-0-0
NON-CONFERENCE	4-2-1	3-1-0	1-0-1	0-1-0

#	Player	gp	g	a	pts	sh	sh%	pen-min	pp	sh
9	Erica Power	23	8	16	24	80	.100	3-6	2	0
8	A. Eder-Zdechlik	19	9	11	20	67	.134	3-6	0	2
18	Carolyn Draayer	23	11	5	16	98	.112	4-8	5	1
4	Diana Draayer	23	3	10	13	46	.065	7-14	2	0
10	Courtney Boucher	23	4	8	12	86	.047	9-18	2	0
13	Katie Aney	23	7	2	9	51	.137	5-10	5	0
3	Emily Reibert	22	7	2	9	42	.167	7-14	1	0
11	Keri Pickel	22	5	2	7	30	.167	2-4	1	0
20	Kaitlyn Klein	23	4	3	7	42	.095	0-0	1	0
5	Rachel Skoglund	22	2	5	7	36	.056	3-6	0	0
7	Lydia Wagner	18	3	3	6	35	.086	4-8	2	0
22	Marissa Brandt	23	3	2	5	17	.176	3-6	2	0
14	Katy Fuller	23	2	3	5	36	.056	5-10	0	0
23	Laura Johnson	19	0	5	5	32	.000	8-16	0	0
6	Emily Gustafson	21	0	2	2	23	.000	2-4	0	0
19	Leah Johnson	19	0	2	2	7	.000	2-4	0	0
15	Allie Lewis	23	0	2	2	15	.000	0-0	0	0
17	Callie Johnson	5	0	1	1	1	.000	1-2	0	0
2	Courtney Bethune	23	0	0	0	23	.000	4-8	0	0
12	Hannah Heacox	7	0	0	0	5	.000	1-2	0	0
24	Courtney Potter	10	0	0	0	7	.000	0-0	0	0
TM	TEAM	6	0	0	0	0	.000	2-4	0	0
	Total	23	68	84	152	779	.087	75-150	23	3
	Opponents	23	29	40	69	467	.062	105-210	9	1

#	Goalie	gp	min	ga	gaavg	saves	save%	w-l-t
1	Lindsey Hibbard	21	1229:10	22	1.07	396	.947	16-2-2
35	Amanda Koep	3	160:29	7	2.62	42	.857	2-1-0
TM	EMPTY NET	6	1:30	0	-	0	.000	0-0-0
	Total	23	1391:09	29	1.25	438	.938	18-3-2
	Opponents	23	1391:09	68	2.93	710	.913	3-18-2

Attendance Summary	GAC	Opponent
Total	1333	1763
Dates/Avg Per Date	13/103	9/196
Neutral Site #/Avg	1/120	

Goals by Period	1st	2nd	3rd	OT	Total
Gustavus Adolphus	17	22	29	0	68
Opponents	8	9	11	1	29

Shots by Period	1st	2nd	3rd	OT	Total
Gustavus Adolphus	256	269	249	5	779
Opponents	158	153	152	4	467

Saves by Period	1st	2nd	3rd	OT	Total
Gustavus Adolphus	150	144	141	3	438
Opponents	239	247	219	5	710

**Gustavus Adolphus Hockey
Gustavus Adolphus Game Results (as of Feb 18, 2015)
All games**

Date	Opponent	Score	Shots	Overall	Conf	Time	Att.	Goalie of record
Nov 04	#9 UW-SUPERIOR	W 3-1	29/23	1-0-0	0-0-0	2:08	123	Lindsey Hibbard
* Nov 14	CONCORDIA COLLEGE	W 3-1	42/30	2-0-0	1-0-0	2:05	111	Lindsey Hibbard
* Nov 15	CONCORDIA COLLEGE	W 2-0	44/18	3-0-0	2-0-0	1:54	73	Lindsey Hibbard
* Nov 21	HAMLIN UNIVERSITY	W 6-3	39/11	4-0-0	3-0-0	1:52	143	Amanda Koep
* Nov 22	at Hamline University	W 4-0	47/19	5-0-0	4-0-0	2:00	164	Lindsey Hibbard
Nov 29	at Plattsburgh State	Tot 4-4	26/42	5-0-1	4-0-0	2:12	381	Lindsey Hibbard
Nov 30	vs #5 Middlebury	Lot 2-3	38/28	5-1-1	4-0-0	2:03	120	Lindsey Hibbard
* Dec 05	at St. Olaf	W 7-2	36/12	6-1-1	5-0-0	1:52	163	Lindsey Hibbard
* Dec 06	ST. OLAF	Tot 1-1	41/13	6-1-2	5-0-1	2:06	97	Lindsey Hibbard
Dec 10	at #6 UW-River Falls	W 3-2	22/29	7-1-2	5-0-1	1:58	183	Lindsey Hibbard
Dec 13	UW-STEVENS POINT	W 3-1	42/16	8-1-2	5-0-1	2:02	97	Lindsey Hibbard
Jan 09	ADRIAN	L 0-1	17/32	8-2-2	5-0-1	2:09	57	Lindsey Hibbard
Jan 10	LAKE FOREST	W 2-1	20/20	9-2-2	5-0-1	1:56	85	Amanda Koep
* Jan 16	AUGSBURG	W 5-0	38/10	10-2-2	6-0-1	1:53	79	Lindsey Hibbard
* 01/17/15	at Augsburg	W 2-1	26/19	11-2-2	7-0-1	1:55	222	Lindsey Hibbard
* Jan 23	ST. MARY'S	W 3-2	29/19	12-2-2	8-0-1	1:52	101	Lindsey Hibbard
* Jan 24	at St. Mary's	W 1-0	41/19	13-2-2	9-0-1	1:50	130	Lindsey Hibbard
* Jan 30	CSB	W 3-0	32/18	14-2-2	10-0-1	1:54	113	Lindsey Hibbard
* Jan 31	at CSB	W 2-0	38/17	15-2-2	11-0-1	2:00	195	Lindsey Hibbard
* Feb 06	at St. Catherine	W 4-1	33/12	16-2-2	12-0-1	1:56	125	Lindsey Hibbard
* Feb 07	ST. CATHERINE	W 1-0	30/12	17-2-2	13-0-1	1:53	111	Lindsey Hibbard
* Feb 13	at UST-WOM	W 5-2	40/26	18-2-2	14-0-1	2:00	200	Lindsey Hibbard
* Feb 14	ST. THOMAS	L 2-3	29/22	18-3-2	14-1-1	1:58	143	Amanda Koep

Team Record	W-L-T	Attendance	Dates	Total	Avg.
Overall:	18-3-2	Total:	23	3216	140
Conference:	14-1-1	Home:	13	1333	103
Home:	10-2-1	Away:	9	1763	196
Away:	8-0-1	Neutral:	1	120	120
Neutral:	0-1-0				
Overtime:	0-1-2				