



## GUSTAVUS WOMEN'S HOCKEY NOTES 2014-15

### Gustavus Sports Information

800 W College Ave, St. Peter, MN 56082  
gustavus.edu/athletics  
(507) 933-7647 • sportsinfo@gustavus.edu

Women's Hockey Media Contact  
Nick Hoelmer, Asst. Sports Information Director  
(507) 933-8411 • nhoelmer@gustavus.edu

### Follow Gustavus Athletics Online

Twitter  
@GustieAthletics

Flickr  
flickr.com/photos/gogusties

Facebook  
facebook.com/GustieAthletics

YouTube  
youtube.com/gustavusathletics

Game Central  
portal.stretchinternet.com/gac

Instagram  
instagram.com/gustieathletics

### 2014-15 SCHEDULE

DATE	OPPONENT	TIME/RESULT
<b>NOVEMBER</b>		
4	<b>No. 9 UW-SUPERIOR</b>	W 3-1
14	<b>CONCORDIA COLLEGE</b>	W 3-1
15	<b>CONCORDIA COLLEGE</b>	W 2-0
21	<b>HAMLIN UNIVERSITY</b>	W 6-3
22	Hamline University	W 4-0
29	No. 1 Plattsburgh State University	T 4-4 (SL)
30	No. 5 Middlebury College	L 2-3 (OT)
<b>DECEMBER</b>		
5	St. Olaf College	W 7-2
6	<b>ST. OLAF COLLEGE</b>	T 1-1
10	No. 6 UW-River Falls	W 3-2
13	<b>No. 7 UW-STEVENS POINT</b>	W 3-1
<b>JANUARY</b>		
9	<b>NO. 7 ADRIAN COLLEGE</b>	L 0-1
10	<b>LAKE FOREST COLLEGE</b>	W 2-1
16	<b>AUGSBURG COLLEGE</b>	W 5-0
17	Augsburg College	W 2-1
23	<b>SAINT MARY'S UNIVERSITY</b>	W 3-2
24	Saint Mary's University	W 1-0
30	<b>COLLEGE OF SAINT BENEDICT</b>	W 3-0
31	College of Saint Benedict	W 2-0
<b>FEBRUARY</b>		
6	St. Catherine University	W 4-1
7	<b>ST. CATHERINE UNIVERSITY</b>	W 2-0
13	University of St. Thomas	7:30 p.m.
14	<b>UNIVERSITY OF ST. THOMAS</b>	2 p.m.
20	<b>BETHEL UNIVERSITY</b>	7 p.m.
21	Bethel University	2 p.m.

HOME GAMES IN BOLD AND CAPS



### 5 Gustavus Adolphus College

Golden Gusties  
13-0-1 MIAC, 17-2-2 Overall

vs.

### University of St. Thomas

Tommies  
9-1-4 MIAC, 10-7-4 Overall



#### Game 22

**Date:** Friday, February 13 • **Time:** 7:30 p.m. • **Location:** Mendota Heights, Minn.

**Arena:** St. Thomas Ice Arena

**Live Stats:** <https://dl.dropboxusercontent.com/u/108640996/XLIVE.HTM>

#### Game 23

**Date:** Saturday, February 14 • **Time:** 2 p.m. • **Location:** Saint Peter, Minn.

**Arena:** Don Roberts Ice Rink

**Live Stats:** <https://gustavus.edu/athletics/whky/LIVE/xlive.htm>

**Setting The Scene:** After earning a series sweep over St. Catherine this past weekend, the Gustavus Adolphus women's hockey team will be back in action this Friday and Saturday, Feb. 13 and 14, when it takes on the University of St. Thomas in a home-home series. Gustavus will travel to Mendota Heights, Minnesota on Friday for a 7:30 p.m. game at St. Thomas Arena and will welcome the Tommies to St. Peter on Saturday afternoon for a 2 p.m. matchup at Don Roberts Ice Rink. Gustavus enters the weekend with a record of 13-0-1 in the MIAC and 17-2-2 overall, while St. Thomas owns a 9-1-4 record in the MIAC and 10-7-4 overall mark.

**Last Time Out:** This past weekend, Gustavus extended its winning streak to nine when it earned a series sweep over St. Catherine University. In Friday's home game, Gustavus found itself in a 1-0 hole entering the game's first intermission, but was able to break the game open when it scored three second period goals en route to a 4-1 victory over the Wildcats. The Gusties' Diana Draayer and Erica Power gave Gustavus a 2-1 lead with goals at the 10:00 and 10:38 marks in the second period, respectively. Emily Reibert then took over with two goals of her own, with one coming at the 1:29 mark in the second period and the other on an empty netter with 4:30 to go in the third to secure the three-goal victory.

On Saturday, Gustavus outshot St. Kate's 30-12 throughout the game, its ninth game in a row in which it held its opponent to 20 shots or less. However, unlike Friday's game, the Gusties were not able to find the net until the final two minutes of the game. After Allison Eder Zdechlik's shot rebounded off Wildcat goalie Samantha Geissler, first-year Erica Power was there to clean up the mess as she flipped a shot into the upper-lefthand corner of the net from the left post to give Gustavus its lone goal on the day and extend her point streak to four. Lindsey Hibbard played the full 60:00 minutes between the pipes for Gustavus and made 12 saves. The shutout was Hibbard's seventh of the season and she has now allowed only one goal in her past five games.

St. Thomas is most recently coming off a win and a tie over Bethel University. In game one in St. Paul, the Tommies took home a 3-0 win over the Royals thanks to a two-goal effort from first-year forward Maddie McGlade. Both of McGlade's goals came in the second period before Tori Bailey added an insurance goal in the third. Tommie goalkeeper Taylor Neisen had her skills on full display, as she made 20 saves in 60:00 minutes of play to notch the shutout win.

After a quiet first two periods, a wild third period that featured four combined goals led to a 2-2 tie on Saturday night at Schwan's Super Rink. The Tommies opened the final period with a pair of goals to take a 2-0 lead before the Royals came back to answer with a pair of goals of their own. Karina Merette scored at 5:31 with assists from Tori Bailey and Allison Borgstrom and Megan Juricko followed six minutes later with a power play goal thanks to assists from Courtney Umland and Heidi Winiecki.

However, the Royals came back with goals from Caroline Kivisto and Lauren Kolak to tie the game and send the two teams to

## 12 MIAC Championships • 11 NCAA Tournament Appearances

## The Match Up Statistical Comparison

GAC		UST
2.90 (2nd)	Goals For	3.10 (1st)
1.14 (1st)	Goals Against	2.14 (T-5th)
19.1% (1st)	Power Play	15.9% (4th)
89.4% (3rd)	Penalty Kill	96.6% (6th)
+13 (1st)	Special Teams Net	+4 (4th)
6.7 (10th)	Penalty Minutes	7.0 (T-8th)

2014-15 season averages with MIAC ranks (10 teams)

## The Series Gustavus vs. St. Thomas

All-Time Record	26-10-4
Last Meeting	L 0-2
Current Streak	L 2

### Coach Mike Carroll

Overall Record at Gustavus vs. St. Thomas	348-80-27 24-10-4
---	----------------------

### Coach Tom Palkowski

Overall Record at St. Thomas vs. Gustavus	123-61-22 4-11-2
---	---------------------

Last Five Seasons	6-4-1
-------------------	-------

Date	Location	Result
Mar. 8, 2014**	Menota Heights	L 0-2
Feb. 15, 2014	Mendota Heights	L 1-3
Feb. 14, 2014	St. Peter	W 5-1
Nov. 17, 2012	St. Peter	W 1-0
Nov. 16, 2012	Mendota Heights	W 4-0
Nov. 19, 2011	Mendota Heights	W 3-2
Nov. 18, 2011	St. Peter	W 5-3
Dec. 4, 2010	St. Peter	W 1-0
Dec. 3, 2010	Mendota Heights	L 0-1
Dec. 5, 2009	Mendota Heights	T 2-2
Dec. 4, 2009	St. Peter	L 1-2

\* - Denotes MIAC Playoff Game

\*\* - Denotes MIAC Championship Game

overtime. In the five-minute extra period, the Royals outshot the Tommies 3-1, but could not find the back of the net and the contest ended in a 2-2 tie.

**Series Snapshot:** This weekend's series will mark marks the 41st and 42nd meetings between Gustavus and St. Thomas in women's hockey. The Gusties hold the advantage in the all-time series with a record of 26-10-4. The two teams split the 2013-14 regular season series last February, with Gustavus walking away with a 5-1 victory in St. Peter on Feb. 14 before St. Thomas captured a 3-1 win the next afternoon. However, the Tommies have the last laugh, as they went on to defeat Gustavus 2-0 in the MIAC Playoff Championship game on March 8, 2014 to advance to the NCAA National Tournament.

**Last Time They Met:** The last time these two teams met was during the MIAC Playoff Championship game on March 8, 2014. St. Thomas struck first when Megan Juricko cracked the seal on the scoreboard at the 2:08 mark, using assists from Tara Baago and Jenny Saxon to score her seventh goal of the season and put the Tommies in front 1-0 in the early going. The score came on just the second shot of the contest for St. Thomas.

Nearly 10 minutes later, Paige Baldwin added to the St. Thomas lead with her 10th goal of the season. Kelsey Barrier received the puck in the corner and centered in front to a wide-open Baldwin. The junior did not let the opportunity go to waste, as she tipped the puck into the upper right corner of the net to put her team on top 2-0 for good, as neither team was able to find the net for the remainder of the afternoon. The loss sent Gustavus home without an MIAC title for the first time in nine years.

**About The Tommies:** With a record of 9-1-4 in the MIAC, St. Thomas is currently entrenched in second place in the MIAC standings with 22 points, five behind Gustavus. Along with the Gusties, the Tommies are the only team to have clinched a berth in this season's MIAC playoffs.

Saint Thomas is led by Tara Baago and junior forward Courtney Umland. Baago leads the team in points with 25, goals with 12 and is second with 13 assists. Umland has tallied 23 points on the year, good for second on the team, after scoring seven goals and tallying 16 assists. Taylor Neisen is the Tommies' primary goalie, as she has started 10-of-21 games and tallied 590:32 minutes. Neisen is 4-4-2 on the season and has a goals against average of 1.53 after allowing 22 total goals. She also has a .906 save percentage to go along with 212 total saves.

St. Thomas is a force to be reckoned with on offense, as the Tommies average 3.1 goals per game, a clip good for first in the MIAC.

**Erica Power Earns MIAC Women's Hockey Athlete Of The Week Honors:** For her performance against St. Kate's, the MIAC sports information directors honored Erica Power with the MIAC Women's Hockey Athlete-of-the-Week award on Monday. Power started her big weekend by delivering the game-winner in Friday's 4-1 road win over SCU. Gustavus had just tied things up 1-1 when she struck with the go-ahead goal just 38 seconds later to dramatically shift the momentum and help give her team the win. A day later, her game-winner in front of the home crowd was even more dramatic, as she scored the game's only goal with just two minutes remaining in the final period to lift her team to a 1-0 win and the sweep. This season, Power ranks seventh in the MIAC in goals (eight), second in assists (13) and fourth in points (21) and she shares the league lead with three game-winning goals. Her 21 points lead all MIAC first-year players.

**Mr. 350?:** Coming into the weekend, head coach Mike Carroll has compiled an overall record of 348-80-27, meaning a sweep of the Tommies would give the Gustie bench master a milestone 350th victory.

**Gustavus Embarks On 18th Season Of Women's Hockey:** The Gustavus women's hockey team is currently in its 18th season. Founded in 1997, the Gusties have attained an all-time record of 384-99-28, which stands as the second winningest program in all of NCAA Division III women's hockey. The Gustie women have won 12 MIAC titles in the 16 years of women's hockey in the conference. Those 12 titles rank first in front of St. Thomas (3) and Augsburg and Saint Mary's, who each have two. Gustavus has also earned the MIAC Playoff crown a total of 11 times, 10 of which have come in the past 11 years and led to 11 NCAA Tournament appearances.

**Wearing The "C":** In the 17-year history of the Gustavus women's hockey program, 33 players have earned the honor of being a captain. This year, that number stays the same as two of the 2013-14 captains, Carolyn Draayer and Courtney Boucher, will move into their senior years and accept the same role during their 2014-15 campaign.

**Home Grown Talent:** Of the 24 players on this year's roster, 22 are natives of Minnesota. The only players who reside outside the State of Hockey are Courtney Bethune, who hails from Fort Frances, Ontario, and Allie Lewis, who is a native of Kearney, Nebraska.

**Veteran Squad:** Despite losing three of its top five scorers from its 2013-14 squad, Gustavus will return 63 percent of its scoring from last season. Sixteen of the Gusties' 24 players are returners, compared to just eight first-year players. Gustavus will also welcome back three of its four 2013-14 All-MIAC honorees, which include Courtney Boucher, Carolyn Draayer and Allison Eder-Zdechlik.

**Gusties In The Polls:** Gustavus is ranked fifth in the most recent USCHO.com Division III Women's Hockey Poll, which was released Monday. This week marks the 88th consecutive time that the Gusties have been ranked in the USCHO.com poll.



### Gustavus Quick Facts

Location: St. Peter, Minnesota  
 Address: 800 West College Ave.  
 St. Peter, MN 56082  
 Founded: 1862  
 Enrollment: 2,455  
 Nickname: Golden Gusties  
 School Colors: Black and Gold  
 Home Ice: Don Roberts Ice Rink  
 NCAA Affiliation: NCAA Division III  
 Conference: Minnesota Intercollegiate Athletic  
 President: Rebecca M. Bergman  
 Athletic Director: Tom Brown  
 Assistant Athletic Director: Jared Phillips  
 Athletic Trainer: Troy Banse  
 Equipment Manager: Jed Friedrich  
 Sports Information Director: Ethan Armstrong  
 Asst. Sports Information Director: Nick Hoelmer

### Gustavus Hockey Quick Facts

2013-14 Record: 17-8-2  
 2013-14 MIAC Record/Finish: 14-4-0/2nd  
 All-Time Record: 384-99-28  
 All-Time MIAC Record: 254-27-12  
 MIAC Championships: 12  
 Returners/First-years: 16/8  
 All-MIAC Honorees Returning/Lost: 3/1

## Gustavus Under Head Coach Mike Carroll

Year	Overall	MIAC	Conference Finish
1999-00	18-10-1	12-5-1	3rd
2000-01	23-6-1	16-2-0	1st
2001-02	23-5-2	18-0-1	1st
2002-03	14-9-4	11-4-3	3rd
2003-04	22-6-0	16-2-0	2nd
2004-05	25-4-1	17-1-0	1st
2005-06	22-5-2	17-0-1	1st
2006-07	25-3-0	17-1-0	1st
2007-08	25-3-0	18-0-0	1st
2008-09	22-2-4	16-0-2	1st
2009-10	26-6-2	14-3-1	1st
2010-11	22-5-3	14-2-2	1st
2011-12	24-4-2	16-1-1	1st
2012-13	27-2-1	18-0-0	1st
2013-14	17-8-2	14-4-0	2nd
2014-15	17-2-2	13-0-1	
<b>Totals</b>	<b>348-80-27</b>	<b>247-25-13</b>	<b>11 MIAC Titles</b>

## Around The League

### MIAC Standings

School	Points	MIAC	Overall
Gustavus ^	27	13-0-1	17-2-2
St. Thomas ^	22	9-1-4	10-7-4
Saint Mary's	18	8-4-2	10-8-3
Concordia	17	7-4-3	8-10-3
Bethel	13	5-6-3	10-8-3
Augsburg	12	4-6-4	6-10-5
Saint Benedict	12	5-7-2	6-10-2
St. Catherine	10	3-7-4	5-11-5
Hamline	6	2-10-2	4-15-2
St. Olaf	3	0-11-3	1-17-3

### This Weekend in the MIAC

#### Friday, February 6

Saint Mary's at Concordia | 7 p.m.

Hamline at Augsburg | 7 p.m.

Bethel at Saint Benedict | 7 p.m.

**Gustavus at St. Thomas | 7:30 p.m.**

St. Catherine at St. Olaf | 7:30 p.m.

#### Saturday, February 7

**St. Thomas at Gustavus | 2 p.m.**

St. Olaf at St. Catherine | 2 p.m.

Saint Mary's at Concordia | 2 p.m.

Saint Benedict at Bethel | 3 p.m.

Augsburg at Hamline | 7 p.m.

### MIAC Athlete-of-the-Week



Erica Power

Fy., Forward

Lakeville, Minn/Apple Valley

Opponent	G	A	P
at St. Catherine	1	0	1
St. Catherine	1	0	1

## USCHO.com Div. III Poll

Rank	School	Overall	Points	Last
1	Elmira (15)	19-1-1	150	1
2	Plattsburgh	17-2-2	135	2
3	Middlebury	16-2-3	116	4
4	Norwich	14-4-2	96	3
5	Gustavus Adolphus	17-2-2	87	6
6	Adrian	17-1-4	73	5
7	Wisconsin-River Falls	18-3-1	68	7
8	Wisconsin-Stevens Point	15-6-2	46	8
9	Amherst	14-2-3	39	9
10	St. Norbert	14-6-3	9	NR



## Gustavus Record When:

At home	10-1-1
On the road	7-0-1
Neutral Site	0-1-0
vs. MIAC opponents	13-0-1
vs. Non-conference opponents	4-2-1
vs. Top 10 opponents	3-2-1
GAC scores 4 or more goals	6-0-1
GAC scores 3 goals	6-0-0
GAC scores 2 or fewer goals	6-2-1
GAC scores first	11-1-1
Opponent scores first	6-1-1
GAC leads after 1st period	5-1-1
Opponent leads after 1st period	3-0-0
Tied after 1st period	7-1-1
GAC leads after 2nd period	9-0-1
Opponent leads after 2nd period	2-0-1
Tied after 2nd period	5-2-0
In overtime	0-1-1
Games decided by one goal	6-2-0
Games decided by two goals	6-0-0
Games decided by three goals	3-0-0
Games decided by four or more	3-0-0
GAC scores on the power play	8-0-0
GAC scoreless on the power play	6-2-2
GAC scores two or more PP goals	6-0-0
GAC outshoots opponent	15-1-1
GAC outshot by opponent	1-1-1
Shots equal	1-0-0
Tuesday Games	1-0-0
Wednesday Games	1-0-0
Friday Games	7-1-0
Saturday Games	8-0-2
Sunday Games	0-1-0
In November	5-1-1
In December	3-0-1
In January	7-1-0
In February	2-0-0
In March	0-0-0
Following a win	13-1-2
Following a loss	2-0-0
Following a tie	1-1-0
Night games	10-1-1
Day games	7-1-1

## Who's Hot

### Scoring vs. SCU

Player	Games	Goals	Assists	Points	Point Streak
Erica Power	2	2	0	2	4
Emily Reibert	2	2	0	2	-
Diana Draayer	2	1	0	1	-

### Goaltending vs. SCU

Player	Record	Minutes	GA	Saves	Scoreless Str.
Lindsey Hibbard	2-0-0	119:57	1	23	107:07

## 2014-15 Season By The Numbers

Largest Victory	5 (2X) Last: vs. Augsburg (1/16/15)
Largest Defeat	1 (2X) Last: vs. Adrian (1/9/15)
Largest First Period Lead	2 (2X) Last: vs. Saint Benedict (1/31/15)
Largest First Period Deficit	1 (4x) last: vs. St. Catherine (2/6/15)
Largest Second Period Lead	3 (4x) Last: vs. St. Catherine (2/6/15)
Largest Second Period Deficit	2 vs. Plattsburgh (11/29/14)
Most Goals Scored	7 vs. St. Olaf (12/5/14)
Fewest Goals Scored	0 vs. Adrian (1/9/15)
Most Goals Allowed	4 vs. Plattsburgh (11/29/14)
Fewest Goals Allowed	0 (5x) Last: vs. St. Catherine (2/7/15)
Largest Lead	5 (2X) Last: vs. Augsburg (1/16/15)
Largest Lead On Road	5 vs. St. Olaf (12/5/14)
Largest Lead At Home	5 vs. Augsburg (1/16/15)
Largest Blown Lead	1 vs. Middlebury (11/30/14)
Largest Deficit	3 vs. Plattsburgh (11/29/14)
Largest Deficit On Road	3 vs. Plattsburgh (11/29/14)
Largest Deficit At Home	1 vs. Adrian (1/9/15)
Largest Comeback-Win/Tie	3 vs. Plattsburgh=Tie (11/29/14)



## Last Time It Happened

### COMEBACKS

#### GAC won when trailing after two periods

GAC: February 13, 2014 vs. UW-Stevens Point. Trailed 1-0 early in the third, Gustavus scored three consecutive goals to capture a 3-1 victory.

#### Opponent won when trailing after two periods

Feb. 1, 2014 vs. Saint Benedict. Blazers trailed 2-1 after two periods, but scored three in the third to capture a 4-2 win.

#### Overcame 1-goal deficit and won

GAC: February 6, 2015 vs. St. Catherine University. Trailed 1-0 early in the first, Gustavus won 4-1.

OPP: Nov. 30, 2014 vs. Middlebury. Trailed 1-0 in first period, won 3-2

#### Overcame 2-goal deficit and won

GAC: Feb. 29, 2013 vs. Bethel. Gusties trailed 2-0 after two, but came back with three goals in the third for a 3-2 win.

OPP: Feb. 1, 2014 vs. Saint Benedict. Blazers trailed 2-0 in second period, but scored four unanswered goals to capture a 4-2 win.

#### Overcame a 3-goal deficit and won

GAC: March 1, 1998 vs. University of Minnesota Club. Gusties scored one in the second and three in the third to win 4-3.

OPP: Never

### OVERTIME GAMES

#### Won overtime game

GAC: March 1, 2012 vs. Bethel. Courtney Boucher scored 6:25 in to overtime to win 1-0 and advance to the MIAC Championship.

OPP: Nov. 30, 2014 vs. Middlebury

#### Tied overtime game

Nov. 29, 2014 at Plattsburgh (4-4)

### SERIES SWEEPS

#### Swept a 2-game regular season home-home series

GAC: Feb. 6 and 7, 2015 vs. St. Catherine. (4-1 Friday in St. Paul, 1-0 Saturday in St. Peter)

OPP: Jan. 31-Feb. 1, 2014 vs. Saint Benedict. (4-2 Friday night in St. Peter, 4-2 again on Saturday in St. Cloud)

#### Swept a 2-game regular season home series

GAC: Nov. 14-15, 2014 vs. Concordia. (3-1, 2-0)

OPP: Never

#### Swept a 2-game regular season away series

GAC: Nov. 15-16, 2013 at Concordia. (4-1, 2-0)

OPP: Never. (MIAC Playoffs: March 10-11, 2000 at Augsburg. (4-1, 2-1)

### SHUTOUTS

#### Last Shutout

GAC: Feb. 7, 2015 vs. St. Catherine, 1-0

OPP: Jan. 9, 2015 vs. Adrian, 1-0

#### Last Home Shutout

GAC: Feb. 7, 2015 vs. St. Catherine, 1-0

OPP: Jan. 9, 2015 vs. Adrian 1-0

#### Last Road Shutout

GAC: Jan. 31, 2015 vs. Saint Benedict, 2-0

OPP: Mar. 8, 2014 vs. St. Thomas 2-0

#### Scoreless Ties (2 in program history)

Jan. 14, 2010 vs. Trinity (Conn.)

Feb. 17, 2009 at UW-Stevens Point

### EXTRA ATTACKER GOALS

#### Scored an extra attacker goal

GAC: Nov. 30, 2014 vs. Middlebury. Lydia Wagner scored w/ 39 sec. left

OPP: Jan. 9, 2005 at UW-River Falls. Gusties won 6-4.

### SHORTHANDED GOALS

#### Scored a shorthanded goal

GAC: Jan. 16, 2015 vs. Augsburg. Allison Eder-Zdechlik scored shorthanded goal in second period to put Gustavus up 3-0.

OPP: Jan. 10, 2014 at UW-Stevens Point. Cassandra Salmen scored shorthanded in the third period of a 5-2 win for the Pointers.

#### Scored two shorthanded goals

GAC: Nov. 22, 2008 at St. Olaf. Melissa Mackley scored two short-handed goals in the third period.

Gusties won 4-2.

OPP: Never

### EMPTY NET GOALS

#### Scored an empty net goal

GAC: Feb. 6, 2015 vs. St. Catherine. Emily Reibert scored EN at 15:30 of a 4-1 win for the Gusties in St. Paul.

OPP: Feb. 15, 2014 vs. St. Thomas. Karina Marette scored EN at 19:47 of a 3-1 Tommie win in Mendota Heights.

### TEAM GOALS IN A PERIOD

#### Team scored 5 or more goals in a period

GAC: Feb. 23, 2013 vs. Saint Benedict. The Gusties scored six goals in the second period on their way to an 8-2 victory in St. Peter.

OPP: Dec. 3, 1998 at the University of Minnesota (Mariucci Arena. Gophers scored five goals in the first period and won 8-1.

### PENALTY SHOTS

#### Scored on a penalty shot

GAC: Never.

OPP: March 19, 2011 vs. Middlebury (NCAA 3rd Place Game, Rochester, N.Y.). Penalty shot goal scored after Lindsey Hjelm checking penalty in the second period. Middlebury won 5-0.

### PENALTIES

#### Not penalized

GAC: Jan. 24, 2015 at Saint Mary's. Gustavus won 1-0.

OPP: Dec. 2, 2000 at St. Catherine. St. Kate's won 4-3.

#### Neither team was penalized

Jan. 30, 1998 at Saint Mary's. Gusties won 6-2.

### HAT TRICKS

#### Last individual 3-goal game

GAC: Jan. 26, 2013 vs. Concordia. Lindsey Hjelm scored three goals (all even) in a 5-1 Gustavus win in St. Peter.

OPP: Jan. 10, 2014 at UW-Stevens Point. Cassandra Salmen scored three goals in the third period of a 5-2 Pointer win.

#### Last individual 4-goal game

GAC: Dec. 2, 2011 at Augsburg. Allie Schwab scored three PP goals and an even goal in a 9-0 shutout.

OPP: Never.

#### All goals scored by one player (3+ Goals)

GAC: Never.

OPP: Dec. 2, 2006 at Hamline. Melanie Levielle scored all three goals in a 4-3 loss.

### SHOTS ON GOAL

#### Fewer than 15 shots in a game

GAC: Dec. 3, 1998 at the University of Minnesota. 11 shots. Minnesota won 8-1.

OPP: Feb. 7, 2015 vs. St. Catherine, 12 shots. Gustavus won 1-0.

#### Fewer than 20 shots in a game

GAC: Jan. 9, 2015 vs. Adrian, 17 shots. Gustavus lost 1-0.

OPP: Feb. 7, 2015 vs. St. Catherine, 12 shots. Gustavus won 1-0.

#### 40 or more shots in a game

GAC: Jan. 24, 2015 vs. Saint Mary's, 41 shots. Gustavus won 1-0.

OPP: Nov. 29, 2014 at Plattsburgh, 42 shots. Tied 4-4.

#### 50 or more shots in a game

GAC: Feb. 16, 2013 vs. St. Olaf, 51 shots. Gustavus won 6-2.

OPP: Nov. 23, 1998 vs. the University of Minnesota: 51 shots. Minnesota won 6-0.

#### 60 or more shots in a game

GAC: Feb. 15, 2013 at St. Olaf, 61 shots. Gustavus won 7-4.

OPP: Feb. 5, 1998 at Boston College, 65 shots. BC won 10-1.

### SINGLE GAME POINTS

#### Player had four points in a game

GAC: Dec. 5, 2014 at St. Olaf. Erica Power scored two goals, two assists. Diana Draayer scored one goal, three assists in same game.

OPP: Mar. 18, 2011 vs. Norwich (NCAA Semifinals). Julie Fortier scored three goals with an assist in a 5-4 Norwich victory.

#### Player had five points in a game

GAC: Dec. 2, 2011 at Augsburg. Allie Schwab scored three PP goals and an even goal with an assist in a 9-0 shutout.

OPP: Mar. 18, 2005 vs. Middlebury. (NCAA Semifinals) Lorna Griffs scored two goals with three assists in a 7-3 Middlebury win.

#### Player had six or more points in a game

GAC: Feb. 11, 2005 at St. Catherine. Andrea Peterson scored two goals with six assists in a 13-0 win. (Most individual points in a game in program history)

OPP: Jan. 30, 1999 at Middlebury. Michelle Labbe scored three goals with three assists in a 8-0 Middlebury win.



## Carroll At A Glance

### Hometown

- Edina, Minnesota

### Education

- Bachelor's Degree: Recreation, Parks, and Leisure Services (Minnesota State, Mankato '82)

### Family

- Wife: Terri
- Children: Matt and Mike

### Coaching

- 1983-84 – Assistant Coach, University of St. Thomas
- 1984-85 – Assistant Coach, Fergus Falls High School
- 1986-87 – Head Coach, Fergus Falls Community College
- 1990-99 – Head Coach, Mankato West High School
- 1999-Present – Head Coach, Gustavus Adolphus College

Years At Gustavus: 15

All-time Record: 348-80-27

All-time MIAC Record: 247-25-13

MIAC Titles: 11

MIAC Playoff Titles: 11

NCAA Tournaments: 11

NCAA Tournament Record: 8-16-0

Final Fours: 7

Most Wins In A Season: 27 (2012-13)

Fewest Wins In A Season: 14 (2002-03)

\*\*\* All-time winningest coach in Gustavus women's hockey history.

## Head Coach Mike Carroll

Mike Carroll is in his 16th season as the women's head hockey coach at Gustavus. Within his tenure behind the Gustie bench, Carroll has turned Gustavus women's hockey into one of the most successful programs in NCAA Division III. He has compiled an overall record of 348-80-27 in 15 seasons and has the most coaching victories in the history of the program.

Last season, the Gustavus women's hockey team saw its reign atop the Minnesota Intercollegiate Athletic Conference (MIAC) come to an end. The Gusties finished second in the final conference standings with 28 points at 14-4-0, ending their streak of consecutive MIAC Championships at nine. After defeating Bethel 3-2 in the MIAC Playoff Semifinals, Gustavus's season concluded with a 2-0 loss to regular season champion St. Thomas in the MIAC Playoff Championship. The postseason defeat suffered to the Tommies ended Head Coach Mike Carroll's run of 10 consecutive MIAC Playoff titles and trips to the NCAA Tournament. The Gusties finished the year with an overall record of 17-8-2.

Carroll has directed the Gusties to 11 MIAC regular season titles (2000-01, 2001-02, 2004-05, 2005-06, 2006-07, 2007-08, 2008-09, 2009-10, 2010-11, 2011-12, 2012-13) and has been named the MIAC Coach-of-the-Year six times (2001-02, 2003-04, 2004-05, 2005-06, 2010-11, 2012-13). In addition to coaching 34 players who have earned All-Conference honors 59 times, he has coached five MIAC Players-of-the-Year in Sarah Garrison, Andrea Peterson, Stefanie Ubl, Allie Schwab, Lindsey Hjelm. Carroll has also worked with 13 players who have earned AHCA All-America distinction 21 times and two American Hockey Coaches Association Players-of-the-Year, including four-time MIAC Player-of-the-Year and four-time All-American Andrea Peterson.

Prior to coming to Gustavus, Carroll served as the head boys' hockey coach at Mankato West High School from 1991 to 1999. Carroll's college coaching resume included a stint as head men's hockey coach at Fergus Falls Community College from 1986 to 1987 as well as a season as the assistant men's coach at the University of St. Thomas in 1983.

Carroll, an Edina, Minnesota native, competed in hockey and baseball at Mankato State. After graduating with a degree in municipal recreation in 1982, Carroll played professional baseball in the Montreal Expos organization for two years.

In addition to his hockey coaching duties at Gustavus, Carroll is also the head coach of the Golden Gustie baseball team. Mike and his wife, Terri, live in Mankato and have two sons, Matt and Mike.

## 2014-15 Roster

### Breakdown

#### Returners (16)

Courtney Bethune  
 Courtney Boucher  
 Marissa Brandt  
 Carolyn Draayer  
 Allison Eder-Zdechlik  
 Emily Gustafson  
 Hannah Heacox  
 Lindsey Hibbard  
 Callie Johnson  
 Leah Johnson  
 Amanda Koep  
 Allie Lewis  
 Keri Pickel  
 Courtney Potter  
 Emily Reibert  
 Lydia Wagner

#### Newcomers (8)

Katie Aney  
 Diana Draayer  
 Katy Fuller  
 Laura Johnson  
 Kaitlyn Klein  
 Erica Power  
 Ashley Ritten  
 Rachel Skoglund

#### By Class

##### Seniors (5)

Courtney Boucher  
 Marissa Brandt  
 Carolyn Draayer  
 Leah Johnson  
 Keri Pickel

##### Juniors (4)

Allison Eder-Zdechlik  
 Lindsey Hibbard  
 Amanda Koep  
 Emily Reibert

##### Sophomores (7)

Courtney Bethune  
 Emily Gustafson  
 Hannah Heacox  
 Callie Johnson  
 Allie Lewis  
 Courtney Potter  
 Lydia Wagner

##### First-Years (8)

Katie Aney  
 Diana Draayer  
 Katy Fuller  
 Laura Johnson  
 Kaitlyn Klein  
 Erica Power  
 Ashley Ritten  
 Rachel Skoglund

## 2014-15 Numerical Roster

No.	Name	Yr.	Pos.	Hgt.	Hometown/High School
1	Lindsey Hibbard	Jr.	G	5-6	Princeton, Minn./Princeton
2	Courtney Bethune	So.	D	5-8	Fort Frances, Ont./Warroad
3	Emily Reibert	Jr.	F	5-5	Inver Grove Heights, Minn./South St. Paul
4	Diana Draayer	Fy.	F	5-5	Deephaven, Minn./Minnetonka
5	Rachel Skoglund	Fy.	D	5-2	Forest Lake, Minn./Forest Lake
6	Emily Gustafson	So.	F	5-1	Esko, Minn./Esko
7	Lydia Wagner	So.	D	5-7	Zumbrota, Minn./Zumbrota-Mazeppa
8	Allison Eder-Zdechlik	Jr.	F	5-4	Stillwater, Minn./Stillwater
9	Erica Power	Fy.	F	5-6	Lakeville, Minn./Apple Valley
10	Courtney Boucher	Sr.	F/D	5-7	Hastings, Minn./Hastings
11	Keri Pickel	Sr.	F	5-2	Rochester, Minn./Mayo
12	Hannah Heacox	So.	F	5-3	Stillwater, Minn./Stillwater
13	Katie Aney	Fy.	F	5-8	Rochester, Minn./Century
14	Katy Fuller	Fy.	F	5-5	Minneapolis, Minn./Southwest
15	Leah Johnson	Sr.	F	5-4	Chanhassen, Minn./Chaska
17	Callie Johnson	So.	F	5-7	Detroit Lakes, Minn./Detroit Lakes
18	Carolyn Draayer	Sr.	F	5-6	Deephaven, Minn./Minnetonka
19	Allie Lewis	So.	F	5-3	Kearney, Neb./Shattuck-St. Mary's
20	Kaitlyn Klein	Fy.	F	5-6	Plymouth, Minn./Wayzata
22	Marissa Brandt	Sr.	F/D	5-6	Vadnais Heights, Minn./Hill-Murray
23	Laura Johnson	Fy.	D	5-5	Chanhassen, Minn./Chanhassen
24	Courtney Potter	So.	D	5-2	Dayton, Minn./Champlin Park
33	Ashley Ritten	Fy.	G	5-6	Robbinsdale, Minn./Robbinsdale Armstrong
35	Amanda Koep	Jr.	G	5-5	St. Michael, Minn./St. Michael-Albertville

**Head Coach:** Mike Carroll (16th season)

**Assistant Coaches:** Amanda Trunzo, Steve Carroll

## Alphabetical Roster/Pronunciation Guide

NO.	NAME	Pronunciation
13	Aney, Katie	
2	Bethune, Courtney	beth-OON
10	Boucher, Courtney	BOO-shay
22	Brandt, Marissa	
18	Draayer, Carolyn	DRAY-er
4	Draayer, Diana	DRAY-er
8	Eder-Zdechlik, Allison	ee-der-ZED-lick
14	Fuller, Katy	
6	Gustafson, Emily	GUST-uhf-son
12	Heacox, Hannah	HEE-cox
1	Hibbard, Lindsey	
23	Johnson, Laura	
15	Johnson, Leah	
17	Johnson, Callie	
20	Klein, Kaitlyn	
35	Koep, Amanda	COPE
19	Lewis, Allie	
11	Pickel, Keri	
9	Power, Erica	
24	Potter, Courtney	
3	Reibert, Emily	RYE-bert
33	Ritten, Ashley	
5	Skoglund, Rachel	SKOHG-lund
7	Wagner, Lydia	

## Player Profiles



**#1 Lindsey Hibbard**  
Jr., Goaltender  
Princeton, Minn./Princeton

### Season Numbers

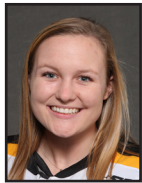
GP	GAA	Save Pct.	Record
20	1.03	.949	15-2-2



**#2 Courtney Bethune**  
So., Defender  
Fort Frances, Ont./Warroad

### Season Numbers

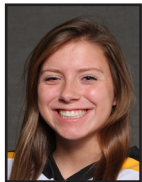
GP	Goals	Assists	Points
21	0	0	0



**#3 Emily Reibert**  
Jr., Forward  
Inver Grove Heights, Minn./South St. Paul

### Season Numbers

GP	Goals	Assists	Points
20	7	2	9



**#4 Diana Draayer**  
Fy., Forward  
Deephaven, Minn./Minnetonka

### Season Numbers

GP	Goals	Assists	Points
21	3	9	12



**#5 Rachel Skoglund**  
Fy., Defender  
Forest Lake, Minn./Forest Lake

### Season Numbers

GP	Goals	Assists	Points
20	2	5	7



**#6 Emily Gustafson**  
So., Forward  
Esko, Minn./Esko

### Season Numbers

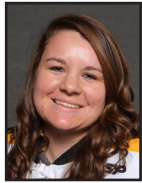
GP	Goals	Assists	Points
19	0	2	2



**#7 Lydia Wagner**  
So., Defender  
Zumbrota, Minn./Zumbrota-Mazeppa

### Season Numbers

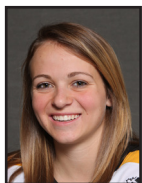
GP	Goals	Assists	Points
16	2	3	5



**#8 Allison Eder-Zdechlik**  
Jr., Forward  
Stillwater, Minn./Stillwater

### Season Numbers

GP	Goals	Assists	Points
17	9	9	18



**#9 Erica Power**  
Fy., Forward  
Lakeville, Minn./Apple Valley

### Season Numbers

GP	Goals	Assists	Points
21	8	13	21



## Player Profiles



**#10 Courtney Boucher**  
Sr., Forward/Defender  
Hastings, Minn./Hastings

Season Numbers

GP	Goals	Assists	Points
21	2	7	9



**#11 Keri Pickel**  
Sr., Forward  
Rochester, Minn./Mayo

Season Numbers

GP	Goals	Assists	Points
21	4	2	6



**#12 Hannah Heacox**  
So., Forward  
Stillwater, Minn./Stillwater

Season Numbers

GP	Goals	Assists	Points
6	0	0	0



**#13 Katie Aney**  
Fy., Forward  
Rochester, Minn./Century

Season Numbers

GP	Goals	Assists	Points
21	6	2	8



**#14 Katy Fuller**  
Fy., Forward  
Minneapolis, Minn./Southwest

Season Numbers

GP	Goals	Assists	Points
21	2	3	5



**#15 Leah Johnson**  
Sr., Forward  
Chanhassen, Minn./Chanhassen

Season Numbers

GP	Goals	Assists	Points
18	0	2	2



**#17 Callie Johnson**  
So., Forward  
Detroit Lakes, Minn./Detroit Lakes

Season Numbers

GP	Goals	Assists	Points
4	0	1	1



**#18 Carolyn Draayer**  
Sr., Forward  
Deephaven, Minn./Minnetonka

Season Numbers

GP	Goals	Assists	Points
21	10	5	15

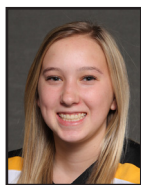


**#19 Allie Lewis**  
So., Forward  
Kearney, Neb./Shattuck-St. Mary's

Season Numbers

GP	Goals	Assists	Points
21	0	2	2

## Player Profiles



**#20 Kaitlyn Klein**  
 Fr., Forward  
 Plymouth, Minn./Wayzata

Season Numbers

GP	Goals	Assists	Points
21	4	3	7



**#22 Marissa Brandt**  
 Sr., Forward/Defender  
 Vadnais Heights, Minn./Hill-Murray

Season Numbers

GP	Goals	Assists	Points
21	2	2	4



**#23 Laura Johnson**  
 Fr., Defender  
 Chanhassen, Minn./Chanhassen

Season Numbers

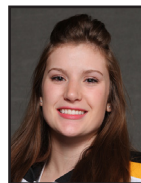
GP	Goals	Assists	Points
17	0	4	4



**#24 Courtney Potter**  
 So., Defender  
 Dayton, Minn./Champlin Park

Season Numbers

GP	Goals	Assists	Points
10	0	0	0



**#33 Ashley Ritten**  
 Fr., Goaltender  
 Robbinsdale, Minn./Robbinsdale Armstrong

Season Numbers

GP	GAA	Save Pct.	Record
0	---	---	0-0-0



**#35 Amanda Koep**  
 Jr., Goaltender  
 St. Michael, Minn./St. Michael-Albertville

Season Numbers

GP	GAA	Save Pct.	Record
2	2.38	.852	2-0-0

**Gustavus Adolphus Hockey  
Gustavus Adolphus Overall Team Statistics (as of Feb 12, 2015)  
All games**

Overall: 17-2-2 Conf: 13-0-1 Home: 10-1-1 Away: 7-0-1 Neut: 0-1-0

<b>TEAM STATISTICS</b>	<b>GAC</b>	<b>OPP</b>
<b>SHOT STATISTICS</b>		
Goals-Shot attempts	61-710	24-419
Shot pct.	.086	.057
Goals/Game	2.9	1.1
Shots/Game	33.8	20.0
Assists	76	33
<b>POWER PLAYS</b>		
Goals-Power Plays	18-87	7-58
Conversion Percent	.207	.121
Shot Attempts	163	77
Shot Percent	.110	.091
<b>SHORT-HANDED</b>		
Goals-Shot attempts	2-15	0-22
Shot Percent	.133	.000
<b>GOAL BREAKDOWN</b>		
Total Goals	61	24
Power Play	18	7
Short-handed	2	0
Empty net	2	0
Penalty	0	0
Unassisted	10	3
Overtime	0	1
Shootout	0	0
Delayed Penalty	0	0
<b>PENALTIES</b>		
Number	70	97
Minutes	140	194
Penalties/Game	3.3	4.6
Pen minutes/Game	6.7	9.2
Minor	70	97
Major	0	0
10-minute Misconduct	0	0
Game Misconduct	0	0
Gross Misconduct	0	0
Match	0	0
<b>FACEOFFS (W-L)</b>		
Faceoff W-L Pct.	653-422	422-653
	.607	.393
<b>SHOOTOUTS (Made-Att)</b>		
	1-4	2-4
<b>ATTENDANCE</b>		
Total	1190	1563
Dates/Avg Per Date	12/99	8/195
Neutral Site #/Avg	1/120	

<b>Goals by Period</b>	<b>1st</b>	<b>2nd</b>	<b>3rd</b>	<b>OT</b>	<b>Total</b>
Gustavus Adolphus	12	20	29	0	61
Opponents	6	9	8	1	24

<b>Shots by Period</b>	<b>1st</b>	<b>2nd</b>	<b>3rd</b>	<b>OT</b>	<b>Total</b>
Gustavus Adolphus	231	249	225	5	710
Opponents	138	144	133	4	419

<b>Saves by Period</b>	<b>1st</b>	<b>2nd</b>	<b>3rd</b>	<b>OT</b>	<b>Total</b>
Gustavus Adolphus	132	135	125	3	395
Opponents	219	229	195	5	648

**Gustavus Adolphus Hockey**  
**Gustavus Adolphus Category Leaders (as of Feb 12, 2015)**  
**All games**

##	Points	GP	G	A	Pts	Sh
9	Erica Power	21	8	13	21	75
8	A. Eder-Zdechlik	17	9	9	18	61
18	Carolyn Draayer	21	10	5	15	86
4	Diana Draayer	21	3	9	12	43
3	Emily Reibert	20	7	2	9	34
10	Courtney Boucher	21	2	7	9	77
13	Katie Aney	21	6	2	8	44
20	Kaitlyn Klein	21	4	3	7	40
5	Rachel Skoglund	20	2	5	7	32
11	Keri Pickel	21	4	2	6	28

##	Goals	GP	G	A	Pts	Sh
18	Carolyn Draayer	21	10	5	15	86
8	A. Eder-Zdechlik	17	9	9	18	61
9	Erica Power	21	8	13	21	75
3	Emily Reibert	20	7	2	9	34
13	Katie Aney	21	6	2	8	44
20	Kaitlyn Klein	21	4	3	7	40
11	Keri Pickel	21	4	2	6	28
4	Diana Draayer	21	3	9	12	43
10	Courtney Boucher	21	2	7	9	77
5	Rachel Skoglund	20	2	5	7	32

##	Power-Play Goals	GP	PPG
18	Carolyn Draayer	21	5
13	Katie Aney	21	4
4	Diana Draayer	21	2
9	Erica Power	21	2

##	Short-Handed Goals	GP	SHG
8	A. Eder-Zdechlik	17	2

##	Game-Winning Goals	GP	GWG
18	Carolyn Draayer	21	3
9	Erica Power	21	3
20	Kaitlyn Klein	21	2
13	Katie Aney	21	2
8	A. Eder-Zdechlik	17	2

##	Plus/Minus	GP	+/-
8	A. Eder-Zdechlik	17	+19
10	Courtney Boucher	21	+17
9	Erica Power	21	+15
23	Laura Johnson	17	+10
2	Courtney Bethune	21	+10
5	Rachel Skoglund	20	+8
11	Keri Pickel	21	+7
3	Emily Reibert	20	+7
18	Carolyn Draayer	21	+6
4	Diana Draayer	21	+6

##	Assists	GP	G	A	Pts	Sh
9	Erica Power	21	8	13	21	75
8	A. Eder-Zdechlik	17	9	9	18	61
4	Diana Draayer	21	3	9	12	43
10	Courtney Boucher	21	2	7	9	77
18	Carolyn Draayer	21	10	5	15	86
5	Rachel Skoglund	20	2	5	7	32
23	Laura Johnson	17	0	4	4	32
20	Kaitlyn Klein	21	4	3	7	40
14	Katy Fuller	21	2	3	5	35
7	Lydia Wagner	16	2	3	5	34

##	Shots	GP	G	A	Pts	Sh	Sh%
18	Carolyn Draayer	21	10	5	15	86	.116
10	Courtney Boucher	21	2	7	9	77	.026
9	Erica Power	21	8	13	21	75	.107
8	A. Eder-Zdechlik	17	9	9	18	61	.148
13	Katie Aney	21	6	2	8	44	.136
4	Diana Draayer	21	3	9	12	43	.070
20	Kaitlyn Klein	21	4	3	7	40	.100
14	Katy Fuller	21	2	3	5	35	.057
3	Emily Reibert	20	7	2	9	34	.206
7	Lydia Wagner	16	2	3	5	34	.059

##	Shot Pct.	GP	G	A	Pts	Sh	Sh%
3	Emily Reibert	20	7	2	9	34	.206
8	A. Eder-Zdechlik	17	9	9	18	61	.148
11	Keri Pickel	21	4	2	6	28	.143
13	Katie Aney	21	6	2	8	44	.136
22	Marissa Brandt	21	2	2	4	15	.133
18	Carolyn Draayer	21	10	5	15	86	.116
9	Erica Power	21	8	13	21	75	.107
20	Kaitlyn Klein	21	4	3	7	40	.100
4	Diana Draayer	21	3	9	12	43	.070
5	Rachel Skoglund	20	2	5	7	32	.062

##	Penalties	GP	Pen	Min
10	Courtney Boucher	21	8	16
23	Laura Johnson	17	8	16
3	Emily Reibert	20	7	14
4	Diana Draayer	21	6	12
14	Katy Fuller	21	5	10
18	Carolyn Draayer	21	4	8
7	Lydia Wagner	16	4	8
2	Courtney Bethune	21	4	8
13	Katie Aney	21	4	8
5	Rachel Skoglund	20	3	6

##	Penalty Minutes	GP	Pen	Min
23	Laura Johnson	17	8	16
10	Courtney Boucher	21	8	16
3	Emily Reibert	20	7	14
4	Diana Draayer	21	6	12
14	Katy Fuller	21	5	10
13	Katie Aney	21	4	8
2	Courtney Bethune	21	4	8
18	Carolyn Draayer	21	4	8
7	Lydia Wagner	16	4	8
9	Erica Power	21	3	6

**Gustavus Adolphus Hockey  
Gustavus Adolphus Combined Team Statistics (as of Feb 12, 2015)  
All games**

Date	Opponent	Score	Att.
Nov 04	#9 UW-SUPERIOR	w 3-1	123
* Nov 14	CONCORDIA COLLEGE	w 3-1	111
* Nov 15	CONCORDIA COLLEGE	w 2-0	73
* Nov 21	HAMLIN UNIVERSITY	w 6-3	143
* Nov 22	at Hamline University	w 4-0	164
Nov 29	at Plattsburgh State	Tot 4-4	381
Nov 30	vs #5 Middlebury	Lot 2-3	120
* Dec 05	at St. Olaf	w 7-2	163
* Dec 06	ST. OLAF	Tot 1-1	97
Dec 10	at #6 UW-River Falls	w 3-2	183
Dec 13	UW-STEVENS POINT	w 3-1	97
Jan 09	ADRIAN	L 0-1	57
Jan 10	LAKE FOREST	w 2-1	85
* Jan 16	AUGSBURG	w 5-0	79
* 01/17/15	at Augsburg	w 2-1	222
* Jan 23	ST. MARY'S	w 3-2	101
* Jan 24	at St. Mary's	w 1-0	130
* Jan 30	CSB	w 3-0	113
* Jan 31	at CSB	w 2-0	195
* Feb 06	at St. Catherine	w 4-1	125
* Feb 07	ST. CATHERINE	w 1-0	111

TEAM STATISTICS	GAC	OPP
<b>SHOT STATISTICS</b>		
Goals-Shot attempts	61-710	24-419
Shot pct.	.086	.057
Goals/Game	2.9	1.1
Shots/Game	33.8	20.0
<b>POWER PLAYS</b>		
Goals-Power Plays	18-87	7-58
Conversion Percent	.207	.121
Shot Attempts	163	77
Shot Percent	.110	.091
<b>SHORT-HANDED</b>		
Goals-Shot attempts	2-15	0-22
Shot Percent	.133	.000
<b>GOAL BREAKDOWN</b>		
Power Play	18	7
Short-handed	2	0
Empty net	2	0
Penalty	0	0
Unassisted	10	3
Overtime	0	1
Shootout	0	0
Delayed Penalty	0	0
<b>PENALTIES</b>		
Number	70	97
Minutes	140	194
Penalties/Game	3.3	4.6
Pen minutes/Game	6.7	9.2
<b>FACEOFFS (W-L)</b>		
Faceoff W-L Pct.	653-422	422-653
	.607	.393
<b>SHOOTOUTS (Made-Att)</b>		
	1-4	2-4

Record:	Overall	Home	Away	Neutral
ALL GAMES	17-2-2	10-1-1	7-0-1	0-1-0
CONFERENCE	13-0-1	7-0-1	6-0-0	0-0-0
NON-CONFERENCE	4-2-1	3-1-0	1-0-1	0-1-0

#	Player	gp	g	a	pts	sh	sh%	pen-min	pp	sh
9	Erica Power	21	8	13	21	75	.107	3-6	2	0
8	A. Eder-Zdechlik	17	9	9	18	61	.148	2-4	0	2
18	Carolyne Draayer	21	10	5	15	86	.116	4-8	5	0
4	Diana Draayer	21	3	9	12	43	.070	6-12	2	0
3	Emily Reibert	20	7	2	9	34	.206	7-14	1	0
10	Courtney Boucher	21	2	7	9	77	.026	8-16	0	0
13	Katie Aney	21	6	2	8	44	.136	4-8	4	0
20	Kaitlyn Klein	21	4	3	7	40	.100	0-0	1	0
5	Rachel Skoglund	20	2	5	7	32	.062	3-6	0	0
11	Keri Pickel	21	4	2	6	28	.143	2-4	1	0
14	Katy Fuller	21	2	3	5	35	.057	5-10	0	0
7	Lydia Wagner	16	2	3	5	34	.059	4-8	1	0
22	Marissa Brandt	21	2	2	4	15	.133	3-6	1	0
23	Laura Johnson	17	0	4	4	32	.000	8-16	0	0
6	Emily Gustafson	19	0	2	2	20	.000	2-4	0	0
15	Leah Johnson	18	0	2	2	7	.000	2-4	0	0
19	Allie Lewis	21	0	2	2	13	.000	0-0	0	0
17	Callie Johnson	4	0	1	1	1	.000	1-2	0	0
2	Courtney Bethune	21	0	0	0	22	.000	4-8	0	0
12	Hannah Heacox	6	0	0	0	4	.000	1-2	0	0
24	Courtney Potter	10	0	0	0	7	.000	0-0	0	0
TM	TEAM	5	0	0	0	0	.000	1-2	0	0
Total		21	61	76	137	710	.086	70-140	18	2
Opponents		21	24	33	57	419	.057	97-194	7	0

#	Goalie	gp	min	ga	gaavg	saves	save%	w-l-t
1	Lindsey Hibbard	20	1169:10	20	1.03	372	.949	15-2-2
35	Amanda Koep	2	100:50	4	2.38	23	.852	2-0-0
TM	EMPTY NET	5	1:09	0	-	0	.000	0-0-0
Total		21	1271:09	24	1.13	395	.943	17-2-2
Opponents		21	1271:09	61	2.88	648	.914	2-17-2

Attendance Summary	GAC	Opponent
Total	1190	1563
Dates/Avg Per Date	12/99	8/195
Neutral Site #/Avg	1/120	

Goals by Period	1st	2nd	3rd	OT	Total
Gustavus Adolphus	12	20	29	0	61
Opponents	6	9	8	1	24

Shots by Period	1st	2nd	3rd	OT	Total
Gustavus Adolphus	231	249	225	5	710
Opponents	138	144	133	4	419

Saves by Period	1st	2nd	3rd	OT	Total
Gustavus Adolphus	132	135	125	3	395
Opponents	219	229	195	5	648

**Gustavus Adolphus Hockey  
Gustavus Adolphus Game Results (as of Feb 12, 2015)  
All games**

<b>Date</b>	<b>Opponent</b>		<b>Score</b>	<b>Shots</b>	<b>Overall</b>	<b>Conf</b>	<b>Time</b>	<b>Att.</b>	<b>Goalie of record</b>
Nov 04	#9 UW-SUPERIOR	W	3-1	29/23	1-0-0	0-0-0	2:08	123	Lindsey Hibbard
* Nov 14	CONCORDIA COLLEGE	W	3-1	42/30	2-0-0	1-0-0	2:05	111	Lindsey Hibbard
* Nov 15	CONCORDIA COLLEGE	W	2-0	44/18	3-0-0	2-0-0	1:54	73	Lindsey Hibbard
* Nov 21	HAMLIN UNIVERSITY	W	6-3	39/11	4-0-0	3-0-0	1:52	143	Amanda Koep
* Nov 22	at Hamline University	W	4-0	47/19	5-0-0	4-0-0	2:00	164	Lindsey Hibbard
Nov 29	at Plattsburgh State	Tot	4-4	26/42	5-0-1	4-0-0	2:12	381	Lindsey Hibbard
Nov 30	vs #5 Middlebury	Lot	2-3	38/28	5-1-1	4-0-0	2:03	120	Lindsey Hibbard
* Dec 05	at St. Olaf	W	7-2	36/12	6-1-1	5-0-0	1:52	163	Lindsey Hibbard
* Dec 06	ST. OLAF	Tot	1-1	41/13	6-1-2	5-0-1	2:06	97	Lindsey Hibbard
Dec 10	at #6 UW-River Falls	W	3-2	22/29	7-1-2	5-0-1	1:58	183	Lindsey Hibbard
Dec 13	UW-STEVENS POINT	W	3-1	42/16	8-1-2	5-0-1	2:02	97	Lindsey Hibbard
Jan 09	ADRIAN	L	0-1	17/32	8-2-2	5-0-1	2:09	57	Lindsey Hibbard
Jan 10	LAKE FOREST	W	2-1	20/20	9-2-2	5-0-1	1:56	85	Amanda Koep
* Jan 16	AUGSBURG	W	5-0	38/10	10-2-2	6-0-1	1:53	79	Lindsey Hibbard
* 01/17/15	at Augsburg	W	2-1	26/19	11-2-2	7-0-1	1:55	222	Lindsey Hibbard
* Jan 23	ST. MARY'S	W	3-2	29/19	12-2-2	8-0-1	1:52	101	Lindsey Hibbard
* Jan 24	at St. Mary's	W	1-0	41/19	13-2-2	9-0-1	1:50	130	Lindsey Hibbard
* Jan 30	CSB	W	3-0	32/18	14-2-2	10-0-1	1:54	113	Lindsey Hibbard
* Jan 31	at CSB	W	2-0	38/17	15-2-2	11-0-1	2:00	195	Lindsey Hibbard
* Feb 06	at St. Catherine	W	4-1	33/12	16-2-2	12-0-1	1:56	125	Lindsey Hibbard
* Feb 07	ST. CATHERINE	W	1-0	30/12	17-2-2	13-0-1	1:53	111	Lindsey Hibbard

<b>Team Record</b>	<b>W-L-T</b>	<b>Attendance</b>	<b>Dates</b>	<b>Total</b>	<b>Avg.</b>
Overall:	17-2-2	Total:	21	2873	137
Conference:	13-0-1	Home:	12	1190	99
Home:	10-1-1	Away:	8	1563	195
Away:	7-0-1	Neutral:	1	120	120
Neutral:	0-1-0				
Overtime:	0-1-2				