

GUSTAVUS ADOLPHUS COLLEGE

2014-15 WOMEN'S BASKETBALL

2014-15 SCHEDULE/RESULTS

DATE	OPPONENT	TIME/RESULT
11/8	CROWN COLLEGE	W 81-31
11/9	MARTIN LUTHER	W 74-58
11/22	MINNESOTA MORRIS	W 82-67
11/29	University of Dubuque#	L 76-78
11/30	College of St. Scholastica#	W 71-58
12/3	University of St. Thomas*	L 43-76
12/6	ST. CATHERINE UNIVERSITY*	W 61-50
12/13	HAMLIN UNIVERSITY*	W 70-68
12/20	University of Northwestern	W 71-62
12/30	UW-River Falls	W 65-57 OT
1/3	St. Olaf College*	1:00 p.m.
1/7	Augsburg College*	7:00 p.m.
1/10	Saint Mary's University*	1:00 p.m.
1/14	CONCORDIA COLLEGE*	5:45 p.m.
1/17	College of Saint Benedict*	3:00 p.m.
1/21	BETHEL UNIVERSITY*	7:00 p.m.
1/24	St. Catherine University*	3:00 p.m.
1/28	UNIVERSITY OF ST. THOMAS*	7:00 p.m.
1/31	Hamline University*	1:00 p.m.
2/4	Carleton College*	7:00 p.m.
2/7	ST. OLAF COLLEGE*	1:00 p.m.
2/11	Concordia College*	5:45 p.m.
2/14	SAINT MARY'S UNIVERSITY*	1:00 p.m.
2/18	MACALESTER COLLEGE*	7:00 p.m.
2/21	COLLEGE OF SAINT BENEDICT*	1:00 p.m.

HOME GAMES in BOLD FACE CAPS; all times Central

* MIAC game

UW-Stout Thanksgiving Tournament

GUSTAVUS QUICK FACTS

Location:	St. Peter, Minnesota
Address:	800 West College Ave. St. Peter, MN 56082
Founded:	1862
Enrollment:	2,500
Nickname:	Golden Gusties
School Colors:	Black and Gold
Home Venue:	Gus Young Court
Conference:	Minnesota Intercollegiate Athletic
NCAA Affiliation:	NCAA Division III
President:	Rebecca M. Bergman
Athletic Director:	Tom Brown
Assistant Athletic Director:	Jared Phillips
Athletic Trainer:	Troy Banse
Equipment Manager:	Jed Friedrich
Sports Information Director:	Ethan Armstrong
Sports Information Graduate Assistant:	Nick Hoelmer

GUSTAVUS ADOLPHUS COLLEGE

"Golden Gusties"

8-2 Overall, 2-1 MIAC

ST. OLAF COLLEGE

"Oles"

4-6 Overall, 1-2 MIAC

GAME ELEVEN

GAME INFORMATION

DATE: Saturday, January 3

TIME: 1:00 p.m.

SITE: Northfield, Minnesota

VENUE: Skoglund Center

WEB VIDEO: <http://portal.stretchinternet.com/stolaf>

LIVE STATS: <http://portal.stretchinternet.com/stolaf>

SETTING THE SCENE

The Gustavus Adolphus women's basketball team will travel to Northfield, Minnesota for a Minnesota Intercollegiate Athletic Conference game against St. Olaf College on Saturday, Jan. 3 at 1:00 p.m. The Gusties head into 2015 sitting in a four-way tie for second place in the conference standings at 2-1 in MIAC play and 8-2 overall. The Oles are 1-2 in the league and 4-6 overall.

LAST TIME OUT

The Gustavus women's basketball team capped 2014 off with a 65-57 overtime victory over UW-River Falls in its last time out on Tuesday, Dec. 30 in River Falls, Wisconsin. Thanks a Mikayla Miller (Fy., Goodhue, Minn.) game-tying three-pointer with :29 seconds remaining in regulation, the Gusties were able to force overtime with the score tied 51-51. With the game knotted at 57-57 with less than two minutes on the clock in the overtime session, Gustavus took control and finished the game on an 8-0 scoring-run en route to its fourth straight victory.

Miller led all scorers with 18 points after going 7-for-12 from the floor, 1-for-3 from three, and 3-for-8 at the line. Maddie Ehrich (Sr., Eden Prairie, Minn.) finished next in line with 15 points after going 4-for-6 from the field and hitting 7-of-9 free throws. The Black and Gold finished the game 50-percent (24-48) from the floor, 50-percent (3-6) from three, and 56-percent (14-25) at the line. Although the Gusties were outrebounded 42-to-29, they managed to capitalize on the Falcons' 30 turnovers with 34 points.

SERIES HISTORY

Saturday's game will be the 71st meeting between Gustavus and St. Olaf in women's basketball. The Gusties hold the advantage in the all-time series with a record of 46-24. The two squads split the

GUSTAVUS PROJECTED STARTERS

#	Player	Pos.	Yr.	Ht.	Hometown	PPG	RPG	FG%	3PT%	FT%	MIN.
10	Mikayla Miller	G	Fy.	5-8	Goodhue, Minn.	20.1	5.8	.416	.294	.754	32.7
32	Hannah Howard	W	So.	5-9	St. Paul, Minn.	6.3	3.4	.444	.000	.714	21.9
33	Lindsey Johnson	F	Jr.	6-0	Edina, Minn.	9.4	5.5	.522	.615	1.000	27.0
34	Maddie Ehrich	G	Sr.	5-9	Eden Prairie, Minn.	6.4	3.0	.385	.000	.774	24.7
43	Miranda Rice	F	Fy.	5-11	Forest Lake, Minn.	7.8	5.0	.477	.000	.571	24.3

ST. OLAF PROJECTED STARTERS

#	Player	Pos.	Yr.	Ht.	Hometown	PPG	RPG	FG%	3PT%	FT%	MIN.
01	Woo Bandel	G	Jr.	5-5	Westminster, Colo.	5.3	4.1	.339	.227	.421	27.4
11	Lauren Gutierrez	G	Jr.	5-4	Littleton, Colo.	4.0	2.8	.255	.231	.429	24.7
23	Afton Wolter	G	Jr.	5-8	Norwood, Minn.	11.8	3.1	.333	.333	.857	24.9
24	Sheridan Blandford	F	Sr.	5-11	Aurora, Colo.	5.5	4.1	.390	.000	.750	15.0
33	Betsey Daly	F	So.	5-9	Rochester, Minn.	9.4	7.1	.435	.333	.593	25.1



TWITTER
[@GustieAthletics](https://twitter.com/GustieAthletics)



FACEBOOK
facebook.com/GustieAthletics



GAME CENTRAL
client.stretchinternet.com/client/gac.portal



YOUTUBE
youtube.com/gustavusathletics



INSTAGRAM
instagram.com/gustieathletics



FLICKR
flickr.com/photos/googusties



2014-15 GUSTAVUS ADOLPHUS WOMEN'S BASKETBALL GAME NOTES

GUSTAVUS VS. ST. OLAF | SATURDAY, JANUARY 3

regular season series in 2013-14 with St. Olaf coming out victorious 68-64 on Jan. 4 in Northfield and Gustavus winning 58-46 on Feb. 1 in St. Peter. The Gusties and Oles have split the last three seasons.

SCOUTING THE OLES

The St. Olaf women's basketball team is looking for a turnaround in 2015 after capping the opening portion of the season with a five game stretch during which it went 1-4. The Oles have dropped their last two games, which includes a nail-biting 52-51 loss to Carleton in its last time out on Dec. 13 at home in the Skoglund Center. That game marked the beginning of a four-game home-stand for the Oles.

Scoring has been the issue for St. Olaf through its first 10 games of the season. The Oles are currently ranked 12th in the MIAC with a 51.9 points per game average. They are shooting 31.7-percent (11th/MIAC) from the field, 27.4-percent (10th/MIAC) from three-point range, and 54.3-percent (12th/MIAC) at the line. Despite its offensive struggles, St. Olaf has proven to be tough defensively. The Oles are allowing 57.5 points per game (5th/MIAC) and are holding opponents to 35.6-percent (3rd/MIAC) from the floor.

Afton Wolter and Betsey Daly head into January the squad's top two scorers. Wolter is averaging 11.8 points and is shooting 33.3-percent from the field, while Daly is averaging 9.4 points and is shooting 43.5-percent. Wolter has made the most three-point field goals in the league with 34 and is shooting 33.3-percent from behind the arc.

NEWS AND NOTES

Overtime - The Gustavus women's basketball team came away victorious in its first overtime test of the season on Tuesday night against UW-River Falls. After the Falcons tied the game at 57-57 with 2:05 on the clock in overtime, the Gusties didn't allow the home team a single field goal, forced two turnovers, and capped the remaining minutes with an 8-0 scoring run. The Gusties didn't commit one turnover and went 5-for-6 from the field and 4-for-6 at the line in overtime. The win was Gustavus's first in overtime since Jan. 18, 2012 when the Black and Gold defeated Hamline 83-82.

Larceny - To go along with her game-high 18 points against UW-River Falls, rookie guard Mikayla Miller nearly posted a triple-double with nine rebounds and nine steals. Miller's nine boards match her season-high turned in twice before, while her nine steals is not only a season-best but a program-best as well. Her steal total on Tuesday night ties Gustavus's school record set by Erika Heltner on Jan. 25, 1995 against Saint Mary's. Miller currently has 36 steals on the season, ranking her second in the league behind Hamline's Jordan Sammons (44).

Into The MIAC We Go - With the opening two months of the season in the books and the calendar turned, the Gustavus women's basketball team will now focus its attention on the MIAC. Saturday's game against St. Olaf marks the beginning of Gustavus's most grueling month of the season. The Gusties will compete in nine games over January with six on the road and three at home. Laurie Kelly's squad completed its non-conference schedule with a 6-1 record with its only loss coming at the hands of Dubuque 78-76 on Nov. 29. Since a loss to St. Thomas on Dec. 3, the Gusties head into a three-game road-stand riding a four-game winning-streak during which they are averaging 66.75 points and are shooting 41.7-percent from the field.

By The Numbers...

3 - The number of consecutive games that Gustavus's opponent has shot under 50-percent from the free throw line. The Gusties have shot 75-percent or better from the stripe in all but two games this season, ranking them second in the league with a team free throw shooting percentage of .749.

STATISTICAL COMPARISON

GUSTAVUS	vs.	ST. OLAF
8-2	Overall Record	4-6
2-1	Conference Record	1-2
69.4	Points Per Game	51.9
+8.9	Scoring Margin	-5.6
.445	Field Goal Percentage	.317
.374	3-PT Field Goal Percentage	.274
.749	Free Throw Percentage	.543
368	Rebounds	414
36.8	Rebounds Per Game	41.4
+4.0	Rebounding Margin	+1.6
133	Assists	113
13.3	Assists Per Game	11.3
0.7	Assist/Turnover Ratio	0.6
19.4	Turnovers Per Game	17.4
+1.8	Turnover Margin	+1.6

GUSTAVUS'S RECORD WHEN...

At home...	5-0
On the road...	2-1
A neutral site...	1-1
In MIAC games...	2-1
In non-conference games...	6-1
When leading after first half...	6-0
When tied after first half...	0-0
When trailing after first half...	2-2
In overtime...	1-0
GAC has more rebounds...	5-1
Opponent has more rebounds...	3-1
Rebounds equal...	0-0
GAC has more assists...	5-0
Opponent has more assists...	3-2
Assists equal...	0-0
GAC commits more fouls...	5-2
Opponent commits more fouls...	3-0
Fouls equal...	0-0
GAC commits more turnovers...	1-2
Opponent commits more turnovers...	7-0
Turnovers equal...	0-0
GAC scores first...	5-0
Opponent scores first...	3-2
Games decided by three or less...	1-1
Games decided by single figures...	2-1
Games decided by double figures...	5-1
In November...	3-1
In December...	4-1
In January...	0-0
In February...	0-0
Following a win...	5-2
Following a loss...	2-0

MIAC STANDINGS/SCHEDULE

SCHOOL	MIAC	OVERALL	AROUND THE LEAGUE
St. Thomas	3-0	10-0	Saturday, January 3
Bethel	2-1	8-1	Saint Mary's at Concordia
Gustavus	2-1	8-2	St. Thomas at Carleton
Saint Mary's	2-1	8-2	Macalester at Hamline
Carleton	2-1	3-6	Gustavus at St. Olaf
Concordia	1-1	5-4	Augsburg at St. Catherine
Augsburg	1-2	6-4	Bethel at Saint Benedict
Hamline	1-2	6-4	
St. Catherine	1-2	6-4	
Saint Benedict	1-2	4-6	
St. Olaf	1-2	4-6	
Macalester	0-2	2-6	



2014-15 GUSTAVUS ADOLPHUS WOMEN'S BASKETBALL GAME NOTES

GUSTAVUS VS. ST. OLAF | SATURDAY, JANUARY 3

2014-15 GUSTAVUS WOMEN'S BASKETBALL TEAM



2014-15 GUSTAVUS WOMEN'S BASKETBALL NUMERICAL ROSTER

No.	Name	Year	Position	Height	Hometown	High School
3	Emee Udo	First-year	Guard	5-9	Apple Valley, Minn.	Eastview
5	Kelsey Carpenter	Sophomore	Guard	5-8	St. Peter, Minn.	St. Peter
10	Mikayla Miller	First-year	Guard	5-8	Goodhue, Minn.	Goodhue
11	Emily FitzSimmons*	Senior	Guard	5-7	Good Thunder, Minn.	Maple River
12	Anne Odegard	Sophomore	Guard	5-9	St. Paul, Minn.	Cretin-Derham Hall
14	Kate Thiesse	First-year	Forward	5-10	Welcome, Minn.	Martin County West
15	Siri Sviggum	First-year	Guard	5-7	Dennison, Minn.	Kenyon-Wanamingo
20	Hannah Silva-Breen	First-year	Forward	5-10	Prior Lake, Minn.	Prior Lake
21	Morgan Iverson	Sophomore	Forward	5-9	Waconia, Minn.	Waconia
22	Julie Sohre	Junior	Forward	5-10	Good Thunder, Minn.	Maple River
23	Heather Hohenstein	Junior	Guard	5-5	Garden City, Minn.	Lake Crystal Wellcome Memorial
24	Taylor Ebnet	Sophomore	Guard	5-7	Lake Lillian, Minn.	BOLD
30	Kelle Nett	Junior	Forward	5-10	Spring Valley, Ill.	Hall
32	Hannah Howard	Sophomore	Guard	5-9	St. Paul, Minn.	Cretin-Derham Hall
33	Lindsey Johnson*	Junior	Forward	6-0	Edina, Minn.	Edina
34	Maddie Ehrich	Senior	Guard	5-9	Eden Prairie, Minn.	Lion's Gate Christian Academy
40	Anna Lundquist	Junior	Post	5-11	Rochester, Minn.	Mayo
42	Emmaline Crawford	Sophomore	Post	6-0	Mankato, Minn.	East
43	Miranda Rice	First-year	Forward	5-11	Forest Lake, Minn.	Forest Lake
44	Stephanie Klockmann	First-year	Post	5-10	Brownston, Minn.	Glencoe-Silver Lake
50	Cara Christiansen	Sophomore	Forward	5-10	North Mankato, Minn.	West

Head Coach: Laurie Kelly (Third Season)

Assistant Coaches: Dan Wolfe, Angie Potts, Nate Otto



HEAD COACH LAURIE KELLY

Third Season

35-26 at Gustavus

258-215 Overall

Office: 507-933-6145

Email: lkelly@gustavus.edu

Laurie Kelly is in her third season as the head coach of the Gustavus women's basketball team. Kelly, a 1993 graduate of the University of St. Thomas with a degree in speech communications, came to Gustavus from Northern Arizona University in Flagstaff, where she directed the Division I Lumberjacks for nine seasons.

Thanks to a late surge during which the 2013-14 Gustavus women's basketball team won seven of eight games from late-January to mid-February, the Gusties were able finish sixth in the conference standings with a record of 11-11 and earn a trip to the MIAC Playoffs for an MIAC-best 14th consecutive season. Gustavus finished the year with a record of 14-12 overall after falling on the road to No. 3-seeded St. Thomas 66-51 in the quarterfinals of the MIAC Playoffs.

Senior guard Julia Dysythe (White Bear Lake, Minn.) and sophomore post Karina Schroeder (Lake Crystal, Minn.) were both honored as members of the All-Conference Team following the season. Dysythe, a first time all-conference performer, scored a career-high 382 points (13.7 ppg) and shot 42.1-percent from the field. Schroeder, a member of the MIAC All-Rookie Team last season, established herself as one of the top post players in the league after averaging 14.2 points per game, shooting 53.3-percent from the field, and bringing down an average of 8.9 rebounds per game. She led the team in all three categories and finished with the second-best field goal shooting percentage in the league at 51.6-percent against league opponents.

A Rochester, Minnesota, native, Kelly made a quick ascent through the Division II and I coaching ranks after record setting Division III playing career at the University of St. Thomas in the early '90s. In the past nine years at Northern Arizona, she has compiled the most wins in the program's history (117), while also directing the team to its first-ever Big Sky Conference tournament title and NCAA tournament bid in the 2005-06 season. During Kelly's tenure, the Lumberjacks advanced to the Big Sky tournament six times with two appearances in the championship game (2006, 2007), and her teams have registered two of the three 20-win seasons in the program's history.

In addition to quality on the floor, her squads have also been strong in the classroom, with four players earning CoSIDA Academic All-District honors including one Academic All-American. The Lumberjacks were recognized in the Women's Basketball Coaches Association Top 25 Academic Honor Roll six times, with two Top Ten national rankings.

Following the 2012-13 season, the Gustavus women's basketball team achieved a significant milestone when the Women's Basketball Coaches Association (WBCA) announced its Academic Top 25 Team Honor Roll following the year. Making their 15th appearance on the NCAA Division III honor roll, the Gusties were recognized as the team with the top cumulative grade point average in country at a 3.600 – a first in the program's history.

Prior to her position at Northern Arizona, Kelly coached at Binghamton University in New York and built the Bearcats into one of the top Division II programs in the country before helping the institution transition to a Division I program in 2001-02. In that first year of Division I competition, Kelly directed the team to a 19-9 record and a second-place finish in the America East Conference. During her five years at Binghamton, Kelly compiled a record of 94-22, including a mark of 75-13 in the program's final three years at the Division II level, and her squads won New England Collegiate Conference (NECC) titles in 1999 and 2000 and Eastern Collegiate Athletic Conference (ECAC) titles in 2000 and 2001. She was named ECAC Coach of the Year in 2000 and New York State Coach of the Year in 2002. Kelly started her collegiate coaching career as the graduate assistant coach at Minnesota State University, Mankato from 1996 to 1998. While she was at Minnesota State, Mankato she earned a master's degree in physical education with an emphasis in sports administration.

Before her success in the coaching ranks, Laurie Trow Kelly was a standout player at the University of St. Thomas from 1989 to 1993 and is recognized by many as one of the greatest players in NCAA Division III history. A gifted athlete, the 6-1 Kelly scored 2,607 points and pulled down 1,204 rebounds in four years, earning Kodak All-America honors three consecutive seasons. In her senior season (1992-93), Kelly was voted National Player of the Year by the Women's Basketball Coaches Association after averaging more than 26 points per game. She set 22 conference and 24 school records, was conference MVP three times and was also named Midwest Sports Channel NCAA Division III Women's Athlete of the Year. In January of 2006, Kelly was one of five players selected to the NCAA Division III 25th Anniversary Team.

Laurie Kelly is the ninth head coach in the history of the Gustavus women's basketball program. Heading into the 2014-15 season, the Gusties have compiled an all-time record of 632-434 (.593), winning two Minnesota Intercollegiate Athletic Conference championships and making five NCAA tournament appearances.

In addition to her coaching duties, Kelly serves as the coordinator of the Gustavus Health Promotion program (GHP). The Gustavus Health Promotion program offers employees at Gustavus a variety of educational opportunities, assessment tools, and physical activity experiences so that they can achieve and maintain a healthy lifestyle.

Kelly lives in St. Peter with and her husband, Matt, and their two daughters, Morgan and Madison.





2014-15 GUSTAVUS ADOLPHUS WOMEN'S BASKETBALL GAME NOTES

GUSTAVUS VS. ST. OLAF | SATURDAY, JANUARY 3

2014-15 TV/RADIO ROSTER



**EMME
EDO**
Guard - First-year
Apple Valley, Minn.



**KELSEY
CARPENTER**
Guard - First-year
St. Peter, Minn.



**MIKAYLA
MILLER**
Guard - First-year
Goodue, Minn.



**EMILY
FITZSIMMONS**
Guard - Senior
Good Thunder, Minn.



**ANNE
ODEGARD**
Guard - Sophomore
St. Paul, Minn.



**KATE
THIESSE**
Forward - First-year
Welcome, Minn.



**SIRI
SVIGGUM**
Guard - First-year
Dennison, Minn.



**HANNAH
SILVA-BREEN**
Forward - First-year
Prior Lake, Minn.



**MORGAN
IVERSON**
Forward - Sophomore
Waconia, Minn.



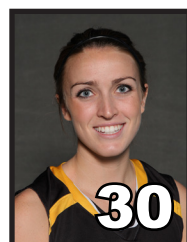
**JULIE
SOHRE**
Forward - Junior
Good Thunder, Minn.



**HEATHER
HOHENSTEIN**
Guard - Junior
Garden City, Minn.



**TAYLOR
EBNET**
Guard - Sophomore
Lake Lillian, Minn.



**KELLE
NETT**
Forward - Junior
Spring Valley, Ill.



**HANNAH
HOWARD**
Guard - Sophomore
St. Paul, Minn.



**LINDSEY
JOHNSON**
Forward - Junior
Edina, Minn.



**MADDIE
EHRICH**
Guard - Senior
Eden Prairie, Minn.



**ANNA
LUNDQUIST**
Post - Junior
Rochester, Minn.



**EMMALINE
CRAWFORD**
Post - Sophomore
Mankato, Minn.



**MIRANDA
RICE**
Forward - First-year
Forest Lake, Minn.



**STEPHANIE
KLOCKMANN**
Post - First-year
Browntown, Minn.



**CARA
CHRISTIENSEN**
Post - Sophomore
North Mankato, Minn.



**LAURIE
KELLY**
Head Coach



**DAN
WOLFE**
Assistant Coach



2014-15 GUSTAVUS ADOLPHUS WOMEN'S BASKETBALL GAME NOTES

GUSTAVUS VS. ST. OLAF | SATURDAY, JANUARY 3

2014-15 COMBINED SEASON STATISTICS

RECORD:	OVERALL	HOME	AWAY	NEUTRAL
ALL GAMES	8-2	5-0	2-1	1-1
CONFERENCE	2-1	2-0	0-1	0-0
NON-CONFERENCE	6-1	3-0	2-0	1-1

#	Player	gp-gs	min	avg	Total		3-Point		F-Throw		Rebounds										pts	avg
					fg-fga	pct	3fg-fga	pct	ft-fga	pct	off	def	tot	avg	pf	dq	a	to	blk	stl		
10	Mikayla Miller	10-10	327	32.7	67-161	.416	15-51	.294	52-69	.754	13	45	58	5.8	23	0	34	47	1	36	201	20.1
33	Lindsey Johnson	10-10	270	27.0	36-69	.522	8-13	.615	14-14	1.000	10	45	55	5.5	20	0	24	17	2	7	94	9.4
43	Miranda Rice	10-10	243	24.3	31-65	.477	0-0	.000	16-28	.571	22	28	50	5.0	26	0	7	18	1	17	78	7.8
05	Kelsey Carpenter	10-2	227	22.7	25-60	.417	13-31	.419	10-13	.769	1	10	11	1.1	19	0	12	18	0	7	73	7.3
34	Maddie Ehrich	10-9	247	24.7	20-52	.385	0-2	.000	24-31	.774	10	20	30	3.0	26	0	21	18	0	9	64	6.4
32	Hannah Howard	10-9	219	21.9	24-54	.444	0-1	.000	15-21	.714	13	21	34	3.4	30	1	13	20	2	21	63	6.3
21	Morgan Iverson	1-0	25	25.0	1-2	.500	1-1	1.000	2-2	1.000	0	2	2	2.0	3	0	0	3	0	0	5	5.0
44	Stephanie Klockmann	7-0	101	14.4	12-18	.667	0-0	.000	6-10	.600	12	11	23	3.3	15	0	5	4	1	6	30	4.3
15	Siri Sviggum	10-0	128	12.8	10-21	.476	5-13	.385	10-12	.833	8	10	18	1.8	8	0	4	5	1	3	35	3.5
12	Anne Odegard	2-0	7	3.5	1-3	.333	0-2	.000	3-3	1.000	0	0	0	0.0	1	0	0	2	0	0	5	2.5
40	Anna Lundquist	9-0	54	6.0	4-15	.267	0-0	.000	11-13	.846	8	13	21	2.3	9	0	1	5	1	2	19	2.1
24	Taylor Ebnet	1-0	3	3.0	0-0	.000	0-0	.000	2-2	1.000	0	1	1	1.0	1	0	0	2	0	0	2	2.0
22	Julie Sohre	2-0	13	6.5	1-1	1.000	0-0	.000	1-2	.500	0	1	1	0.5	2	0	1	1	0	0	3	1.5
11	Emily FitzSimmons	2-0	15	7.5	1-2	.500	1-1	1.000	0-0	.000	0	2	2	1.0	1	0	1	3	0	1	3	1.5
50	Cara Christiansen	4-0	21	5.3	1-2	.500	0-0	.000	3-4	.750	1	2	3	0.8	3	0	1	4	0	0	5	1.3
42	Emmaline Crawford	2-0	6	3.0	0-0	.000	0-0	.000	2-4	.500	1	3	4	2.0	1	0	0	1	1	1	2	1.0
03	Emee Udo	10-0	77	7.7	4-10	.400	0-0	.000	2-3	.667	2	11	13	1.3	4	0	4	5	1	2	10	1.0
23	Heather Hohenstein	6-0	38	6.3	1-3	.333	0-0	.000	0-0	.000	0	1	1	0.2	4	0	4	7	0	1	2	0.3
30	Kelle Nett	3-0	3	1.0	0-1	.000	0-0	.000	0-0	.000	1	2	3	1.0	0	0	1	0	0	0	0	0.0
20	Hannah Silva-Breen	1-0	2	2.0	0-0	.000	0-0	.000	0-0	.000	0	0	0	0.0	0	0	0	0	0	0	0	0.0
Total.....		10	2026		239-537	.445	43-115	.374	173-231	.749	120	248	368	36.8	196	1	133	194	11	113	694	69.4
Opponents.....		10	2029		214-531	.403	60-172	.349	117-195	.600	116	212	328	32.8	190	-	109	212	24	90	605	60.5

TEAM STATISTICS	GAC	OPP
SCORING	694	605
Points per game	69.4	60.5
Scoring margin	+8.9	-
FIELD GOALS-ATT	239-537	214-531
Field goal pct	.445	.403
3 POINT FG-ATT	43-115	60-172
3-point FG pct	.374	.349
3-pt FG made per game	4.3	6.0
FREE THROWS-ATT	173-231	117-195
Free throw pct	.749	.600
F-Throws made per game	17.3	11.7
REBOUNDS	368	328
Rebounds per game	36.8	32.8
Rebounding margin	+4.0	-
ASSISTS	133	109
Assists per game	13.3	10.9
TURNOVERS	194	212
Turnovers per game	19.4	21.2
Turnover margin	+1.8	-
Assist/turnover ratio	0.7	0.5
STEALS	113	90
Steals per game	11.3	9.0
BLOCKS	11	24
Blocks per game	1.1	2.4
ATTENDANCE	771	1181
Home games-Avg/Game	5-154	3-250
Neutral site-Avg/Game	-	2-215

Date	Opponent		Score	Att.
11-15-14	CROWN COLLEGE	w	31-81	182
11-16-14	MARTIN LUTHER	w	58-74	72
11-22-14	MINNESOTA MORRIS	w	67-82	220
11/29/14	vs Dubuque	L	76-78	347
11/30/14	vs St. Scholastica	w	58-71	83
* 12/3/14	at St. Thomas	L	43-76	200
* 12/6/14	ST. CATHERINE	w	50-61	213
* 12/13/14	HAMLIN UNIVERSITY	w	68-70	84
12/20/14	at Northwestern (Minn.)	w	71-62	347
12/30/14	at UW-River Falls	wot	65-57	204

* - Conference game



2014-15 GUSTAVUS ADOLPHUS WOMEN'S BASKETBALL GAME NOTES

GUSTAVUS VS. ST. OLAF | SATURDAY, JANUARY 3

2014-15 GAME-BY-GAME STATISTICAL COMPARISON

Opponent	1st	2nd	Score	Mar	Total FG	FG Pct	3-Pointers	3FG Pct	Free Throws	FT Pct	Rebounds	Assist	T/Over	Block	Steal	Fouls
CROWN COLLEGE	43/17	38/14	81-31	+50	26-60/10-44	.433/.227	8-20/2-9	.400/.222	21-28/9-20	.750/.450	44/34 +10	15/5	21/34	2/0	14/10	26/20
MARTIN LUTHER	38/24	36/34	74-58	+16	28-63/19-53	.444/.358	0-4/4-13	.000/.308	18-20/16-24	.900/.667	43/31 +12	17/9	21/24	2/3	14/11	20/18
MINNESOTA MORRIS	42/28	40/39	82-67	+15	28-53/22-53	.528/.415	5-11/9-18	.455/.500	21-25/14-23	.840/.609	38/28 +10	18/11	17/20	1/2	12/2	21/18
Dubuque	34/36	42/42	76-78	(2)	28-53/25-55	.528/.455	6-14/10-18	.429/.556	14-23/18-26	.609/.692	36/26 +10	19/13	22/14	1/0	8/11	24/17
St. Scholastica	31/21	40/37	71-58	+13	25-52/20-56	.481/.357	5-14/5-16	.357/.313	16-20/13-15	.800/.867	42/24 +18	12/7	20/15	2/1	8/9	16/14
St. Thomas	27/39	16/37	43-76	(33)	14-40/27-51	.350/.529	4-10/7-19	.400/.368	11-14/15-19	.786/.789	24/31 (7)	12/17	24/15	1/7	7/11	20/19
ST. CATHERINE	32/27	29/23	61-50	+11	20-44/16-55	.455/.291	3-14/4-17	.214/.235	18-24/14-22	.750/.636	42/31 +11	11/9	20/12	0/2	9/12	17/22
HAMLIN UNIVERSITY	41/23	29/45	70-68	+2	24-58/29-55	.414/.527	4-12/9-23	.333/.391	18-23/1-6	.783/.167	31/37 (6)	10/13	12/22	0/4	10/2	13/19
Northwestern (Minn.)	30/32	41/30	71-62	+9	22-66/25-56	.333/.446	5-10/6-26	.500/.231	22-29/6-13	.759/.462	39/44 (5)	10/12	14/26	0/5	13/6	15/24
UW-River Falls	28/33	23/18	65-57	+8	24-48/21-53	.500/.396	3-6/4-13	.500/.308	14-25/11-27	.560/.407	29/42 (13)	9/13	23/30	2/0	18/16	24/19

Note: Game totals are displayed in the format TEAM/OPPONENT for each category