

GUSTAVUS ADOLPHUS COLLEGE

2014-15 WOMEN'S BASKETBALL

2014-15 SCHEDULE/RESULTS

DATE	OPPONENT	TIME/RESULT
11/8	CROWN COLLEGE	W 81-31
11/9	MARTIN LUTHER	W 74-58
11/22	MINNESOTA MORRIS	W 82-67
11/29	University of Dubuque#	L 76-78
11/30	College of St. Scholastica#	W 71-58
12/3	University of St. Thomas*	L 43-76
12/6	ST. CATHERINE UNIVERSITY*	W 61-50
12/13	HAMLIN UNIVERSITY*	W 70-68
12/20	University of Northwestern	W 71-62
12/30	UW-River Falls	W 65-57 OT
1/3	St. Olaf College*	W 64-62
1/7	Augsburg College*	W 83-49
1/10	Saint Mary's University*	1:00 p.m.
1/14	CONCORDIA COLLEGE*	5:45 p.m.
1/17	College of Saint Benedict*	3:00 p.m.
1/21	BETHEL UNIVERSITY*	7:00 p.m.
1/24	St. Catherine University*	3:00 p.m.
1/28	UNIVERSITY OF ST. THOMAS*	7:00 p.m.
1/31	Hamline University*	1:00 p.m.
2/4	Carleton College*	7:00 p.m.
2/7	ST. OLAF COLLEGE*	1:00 p.m.
2/11	Concordia College*	5:45 p.m.
2/14	SAINT MARY'S UNIVERSITY*	1:00 p.m.
2/18	MACALESTER COLLEGE*	7:00 p.m.
2/21	COLLEGE OF SAINT BENEDICT*	1:00 p.m.

HOME GAMES in BOLD FACE CAPS; all times Central

* MIAC game

UW-Stout Thanksgiving Tournament

GUSTAVUS QUICK FACTS

Location:	St. Peter, Minnesota
Address:	800 West College Ave. St. Peter, MN 56082
Founded:	1862
Enrollment:	2,500
Nickname:	Golden Gusties
School Colors:	Black and Gold
Home Venue:	Gus Young Court
Conference:	Minnesota Intercollegiate Athletic
NCAA Affiliation:	NCAA Division III
President:	Rebecca M. Bergman
Athletic Director:	Tom Brown
Assistant Athletic Director:	Jared Phillips
Athletic Trainer:	Troy Banse
Equipment Manager:	Jed Friedrich
Sports Information Director:	Ethan Armstrong
Sports Information Graduate Assistant:	Nick Hoelmer

GUSTAVUS ADOLPHUS COLLEGE

"Golden Gusties"

10-2 Overall, 4-1 MIAC

SAINT MARY'S UNIVERSITY

"Cardinals"

8-4 Overall, 2-3 MIAC

GAME THIRTEEN

GAME INFORMATION

DATE: Saturday, January 10

TIME: 1:00 p.m.

SITE: Winona, Minnesota

VENUE: SMU Gym

WEB VIDEO: <http://portal.stretchinternet.com/smu>

LIVE STATS: <http://portal.stretchinternet.com/smu>

SETTING THE SCENE

The Gustavus Adolphus women's basketball team will cap a five-game road-stand on Saturday, Jan. 10 when it travels to Winona to face the Cardinals of Saint Mary's University at 1:00 p.m. The Gusties head into the weekend ranked second in the conference standings with a league mark of 4-1 and an overall record of 10-2. Saint Mary's sits in a five-way tie for sixth at 2-3 in league play and 8-4 overall. Gustavus earned its sixth straight victory on Wednesday night with an 83-49 win over Augsburg in Minneapolis. The Cardinals were also in action on Wednesday night, suffering a 66-65 loss to St. Olaf College in Northfield.

LAST TIME OUT

The Gustavus women's basketball team used a fast start and one of its most balanced offensive performances of the season to cruise to an 83-49 victory at Augsburg in its last time out. Gustavus shot over 60-percent from the field in the first half and jumped out to 43-20 halftime lead. The Gusties kept the pressure on and shot 50-percent in the second half, bringing their final clip to a season-best 55.7-percent.

Hannah Howard (So., St. Paul, Minn.) went 7-for-8 from the field and 5-for-8 from the free throw line to lead the team with a season/game-high 19 points. Mikayla Miller (Fy., Goodhue, Minn.) finished next in line with 16 points after going 7-for-17 from the field. Lindsey Johnson (Jr., Edina, Minn.) also reached double-figures with 13 on 6-of-9 shooting.

GUSTAVUS PROJECTED STARTERS

#	Player	Pos.	Yr.	Ht.	Hometown	PPG	RPG	FG%	3PT%	FT%	MIN.
10	Mikayla Miller	G	Fy.	5-8	Goodhue, Minn.	18.7	6.0	.396	.262	.757	32.2
32	Hannah Howard	W	So.	5-9	St. Paul, Minn.	7.6	4.0	.471	.000	.714	22.4
33	Lindsey Johnson	F	Jr.	6-0	Edina, Minn.	9.4	5.1	.530	.529	1.000	26.3
34	Maddie Ehrich	G	Sr.	5-9	Eden Prairie, Minn.	6.5	2.8	.406	.000	.703	24.8
43	Miranda Rice	F	Fy.	5-11	Forest Lake, Minn.	7.7	4.9	.487	.000	.600	24.1

SAINT MARY'S PROJECTED STARTERS

#	Player	Pos.	Yr.	Ht.	Hometown	PPG	RPG	FG%	3PT%	FT%	MIN.
10	Bridget Pethke	G	Jr.	5-5	New London, Wis.	9.3	5.6	.429	.303	.763	29.6
14	Sara Schoenthaler	G	Sr.	5-10	White Bear Lake, Minn.	4.5	3.3	.302	.279	.500	27.8
21	Octoavia Brown	G	Sr.	5-6	Broadview, Ill.	4.1	1.8	.333	.300	.316	21.0
24	Shelby Auseth	F	Jr.	5-9	Wanamingo, Minn.	12.6	5.2	.413	.342	.873	19.3
34	Molly O'Toole	P/F	Fr.	5-11	Plymouth, Minn.	12.3	5.0	.451	.296	.879	24.0



TWITTER
[@GustieAthletics](https://twitter.com/GustieAthletics)



FACEBOOK
facebook.com/GustieAthletics



GAME CENTRAL
client.stretchinternet.com/client/gac.portal



YOUTUBE
youtube.com/gustavusathletics



INSTAGRAM
instagram.com/gustieathletics



FLICKR
flickr.com/photos/goousties



STATISTICAL COMPARISON

GUSTAVUS	vs.	SAINT MARY'S
10-2	Overall Record	8-4
4-1	Conference Record	2-3
70.1	Points Per Game	64.8
+10.4	Scoring Margin	+6.8
.449	Field Goal Percentage	.400
.352	3-PT Field Goal Percentage	.322
.740	Free Throw Percentage	.722
450	Rebounds	347
37.5	Rebounds Per Game	38.7
+5.3	Rebounding Margin	+1.9
169	Assists	167
14.1	Assists Per Game	13.9
0.8	Assist/Turnover Ratio	0.8
18.7	Turnovers Per Game	17.1
+2.2	Turnover Margin	+1.2

GUSTAVUS'S RECORD WHEN...

At home...	5-0
On the road...	4-1
A neutral site...	1-1
In MIAC games...	4-1
In non-conference games...	6-1
When leading after first half...	7-0
When tied after first half...	0-0
When trailing after first half...	3-2
In overtime...	1-0
GAC has more rebounds...	7-1
Opponent has more rebounds...	3-1
Rebounds equal...	0-0
GAC has more assists...	6-0
Opponent has more assists...	4-2
Assists equal...	0-0
GAC commits more fouls...	6-2
Opponent commits more fouls...	4-0
Fouls equal...	0-0
GAC commits more turnovers...	1-2
Opponent commits more turnovers...	9-0
Turnovers equal...	0-0
GAC scores first...	6-0
Opponent scores first...	4-2
Games decided by three or less...	2-1
Games decided by single figures...	4-1
Games decided by double figures...	6-1
In November...	3-1
In December...	4-1
In January...	2-0
In February...	0-0
Following a win...	7-2
Following a loss...	2-0

SERIES HISTORY

Saturday's game will be the 71st meeting between Gustavus and Saint Mary's in women's basketball. The Gusties hold the advantage in the all-time series with a record of 50-20. Saint Mary's had the Gusties' number last season with a 67-58 win on Jan. 18 in Winona and a 69-62 overtime victory on Feb. 15 in St. Peter. The Cardinals have won the last four games of the series dating back to an 86-66 Gustavus win on Jan. 2, 2013 at Gus Young Court.

SCOUTING THE CARDINALS

The Saint Mary's women's basketball team heads into Saturday looking to snap a four-game losing-streak that began on Dec. 8 with a 51-47 home loss to Bethel. Since then, Saint Mary's suffered three consecutive road losses to North Park (64-62), Concordia (55-41), and St. Olaf (66-65). In their most recent outing at St. Olaf, the Cardinals erased a nine point second half deficit to tie the game with less than three minutes to go. After going back-and-forth, Saint Mary's took a 65-64 lead on a pair of Molly O'Toole free throws with :10 seconds remaining. The Oles responded on the final possession of the game with a Betsey Daly layup to allow St. Olaf the one point win.

The Cardinals are averaging 64.8 points per game (6th/MIAC) and are shooting 40-percent from the field (6th/MIAC), 32.2-percent from three-point range (4th/MIAC), and 72.2-percent from the free throw line (4th/MIAC). The Cardinals have struggled from the field as of late, shooting just 33.3-percent over their current four game slide.

Saint Mary's offense has been led by the combination of Shelby Ausetth and Molly O'Toole. Both players are averaging double-figures with Ausetth scoring 12.6 points per game and shooting 41.3-percent from the field, and O'Toole scoring 12.3 points per game and shooting 45.1-percent. After averaging just 7.3 points and shooting 32.1-percent in the three games prior, Ausetth broke out of her slump with 22 points against St. Olaf on Wednesday. The junior went 4-for-10 from the field and cashed in at the line going 12-for-12.

NEWS AND NOTES

Offense Clicks - The Gustavus offense found its rhythm and put up its best numbers of the season in Wednesday's 34-point victory over Augsburg. The Gusties posted season-high marks in the categories of points (83), field goals (34), field goal percentage (.557), and assists (26). A total of 15 players saw court time with all but three hitting the scoresheet with at least two points. It was Gustavus's fourth time shooting .500 or better from the floor and its best shooting performance since back-to-back 52.8-percent games against Minnesota Morris and Dubuque, respectively. The squad's assist total of 26 is also the program's best mark since a 26-assist performance against Augsburg on Feb. 1, 2010.

Road Warriors - Laurie Kelly's squad is currently enjoying its longest road winning-streak since the 2012-13 season when the Gusties won six straight games. Gustavus's current five-game road-stand comes to an end on Saturday in Winona. So far this season, the Gusties are 4-1 on the road with their only loss coming to Dubuque 78-76 at a neutral site in Menomonie, Wis. on Nov. 29. During the current road-stand, Gustavus is averaging 70.7 points per game and is shooting 43.7-percent from the field. The Gusties have held their opponents to under 40-percent shooting twice and have forced an average of 23.8 turnovers, which is 3.8 more than their season average.

By The Numbers...

+20 - The rebounding advantage Gustavus had over Augsburg on Wednesday night. With a season-high 44 rebounds compared to the Auggies' 24, it was Gustavus's highest rebounding margin since Feb. 22, 2014 when the Gusties out-boarded St. Catherine 43-to-22.

MIAC STANDINGS/SCHEDULE

SCHOOL	MIAC	OVERALL	AROUND THE LEAGUE	
St. Thomas	5-0	12-0	Saturday, January 10	
Gustavus	4-1	10-2	Concordia at St. Thomas	1:00 p.m.
Concordia	4-1	8-4	Hamline at St. Olaf	1:00 p.m.
Saint Benedict	3-2	6-6	Gustavus at Saint Mary's	1:00 p.m.
Carleton	3-2	5-7	Bethel at Augsburg	1:00 p.m.
Bethel	2-3	8-3	Macalester at St. Catherine	3:00 p.m.
Saint Mary's	2-3	8-4	Carleton at Saint Benedict	3:00 p.m.
Augsburg	2-3	7-5		
Hamline	2-3	7-5		
St. Olaf	2-3	5-7		
St. Catherine	1-4	6-6		
Macalester	0-5	2-9		



2014-15 GUSTAVUS WOMEN'S BASKETBALL TEAM



2014-15 GUSTAVUS WOMEN'S BASKETBALL NUMERICAL ROSTER

No.	Name	Year	Position	Height	Hometown	High School
3	Emee Udo	First-year	Guard	5-9	Apple Valley, Minn.	Eastview
5	Kelsey Carpenter	Sophomore	Guard	5-8	St. Peter, Minn.	St. Peter
10	Mikayla Miller	First-year	Guard	5-8	Goodhue, Minn.	Goodhue
11	Emily FitzSimmons*	Senior	Guard	5-7	Good Thunder, Minn.	Maple River
12	Anne Odegard	Sophomore	Guard	5-9	St. Paul, Minn.	Cretin-Derham Hall
14	Kate Thiesse	First-year	Forward	5-10	Welcome, Minn.	Martin County West
15	Siri Sviggum	First-year	Guard	5-7	Dennison, Minn.	Kenyon-Wanamingo
20	Hannah Silva-Breen	First-year	Forward	5-10	Prior Lake, Minn.	Prior Lake
21	Morgan Iverson	Sophomore	Forward	5-9	Waconia, Minn.	Waconia
22	Julie Sohre	Junior	Forward	5-10	Good Thunder, Minn.	Maple River
23	Heather Hohenstein	Junior	Guard	5-5	Garden City, Minn.	Lake Crystal Wellcome Memorial
24	Taylor Ebnet	Sophomore	Guard	5-7	Lake Lillian, Minn.	BOLD
30	Kelle Nett	Junior	Forward	5-10	Spring Valley, Ill.	Hall
32	Hannah Howard	Sophomore	Guard	5-9	St. Paul, Minn.	Cretin-Derham Hall
33	Lindsey Johnson*	Junior	Forward	6-0	Edina, Minn.	Edina
34	Maddie Ehrich	Senior	Guard	5-9	Eden Prairie, Minn.	Lion's Gate Christian Academy
40	Anna Lundquist	Junior	Post	5-11	Rochester, Minn.	Mayo
42	Emmaline Crawford	Sophomore	Post	6-0	Mankato, Minn.	East
43	Miranda Rice	First-year	Forward	5-11	Forest Lake, Minn.	Forest Lake
44	Stephanie Klockmann	First-year	Post	5-10	Brownton, Minn.	Glencoe-Silver Lake
50	Cara Christiansen	Sophomore	Forward	5-10	North Mankato, Minn.	West

Head Coach: Laurie Kelly (Third Season)

Assistant Coaches: Dan Wolfe, Angie Potts, Nate Otto



HEAD COACH LAURIE KELLY

Third Season
37-26 at Gustavus
260-215 Overall
Office: 507-933-6145
Email: lkelly@gustavus.edu



Laurie Kelly is in her third season as the head coach of the Gustavus women's basketball team. Kelly, a 1993 graduate of the University of St. Thomas with a degree in speech communications, came to Gustavus from Northern Arizona University in Flagstaff, where she directed the Division I Lumberjacks for nine seasons.

Thanks to a late surge during which the 2013-14 Gustavus women's basketball team won seven of eight games from late-January to mid-February, the Gusties were able finish sixth in the conference standings with a record of 11-11 and earn a trip to the MIAC Playoffs for an MIAC-best 14th consecutive season. Gustavus finished the year with a record of 14-12 overall after falling on the road to No. 3-seeded St. Thomas 66-51 in the quarterfinals of the MIAC Playoffs.

Senior guard Julia Dysthe (White Bear Lake, Minn.) and sophomore post Karina Schroeder (Lake Crystal, Minn.) were both honored as members of the All-Conference Team following the season. Dysthe, a first time all-conference performer, scored a career-high 382 points (13.7 ppg) and shot 42.1-percent from the field. Schroeder, a member of the MIAC All-Rookie Team last season, established herself as one of the top post players in the league after averaging 14.2 points per game, shooting 53.3-percent from the field, and bringing down an average of 8.9 rebounds per game. She led the team in all three categories and finished with the second-best field goal shooting percentage in the league at 51.6-percent against league opponents.

A Rochester, Minnesota, native, Kelly made a quick ascent through the Division II and I coaching ranks after record setting Division III playing career at the University of St. Thomas in the early '90s. In the past nine years at Northern Arizona, she has compiled the most wins in the program's history (117), while also directing the team to its first-ever Big Sky Conference tournament title and NCAA tournament bid in the 2005-06 season. During Kelly's tenure, the Lumberjacks advanced to the Big Sky tournament six times with two appearances in the championship game (2006, 2007), and her teams have registered two of the three 20-win seasons in the program's history.

In addition to quality on the floor, her squads have also been strong in the classroom, with four players earning CoSIDA Academic All-District honors including one Academic All-American. The Lumberjacks were recognized in the Women's Basketball Coaches Association Top 25 Academic Honor Roll six times, with two Top Ten national rankings.

Following the 2012-13 season, the Gustavus women's basketball team achieved a significant milestone when the Women's Basketball Coaches Association (WBCA) announced its Academic Top 25 Team Honor Roll following the year. Making their 15th appearance on the NCAA Division III honor roll, the Gusties were recognized as the team with the top cumulative grade point average in country at a 3.600 – a first in the program's history.

Prior to her position at Northern Arizona, Kelly coached at Binghamton University in New York and built the Bearcats into one of the top Division II programs in the country before helping the institution transition to a Division I program in 2001-02. In that first year of Division I competition, Kelly directed the team to a 19-9 record and a second-place finish in the America East Conference. During her five years at Binghamton, Kelly compiled a record of 94-22, including a mark of 75-13 in the program's final three years at the Division II level, and her squads won New England Collegiate Conference (NECC) titles in 1999 and 2000 and Eastern Collegiate Athletic Conference (ECAC) titles in 2000 and 2001. She was named ECAC Coach of the Year in 2000 and New York State Coach of the Year in 2002. Kelly started her collegiate coaching career as the graduate assistant coach at Minnesota State University, Mankato from 1996 to 1998. While she was at Minnesota State, Mankato she earned a master's degree in physical education with an emphasis in sports administration.

Before her success in the coaching ranks, Laurie Trow Kelly was a standout player at the University of St. Thomas from 1989 to 1993 and is recognized by many as one of the greatest players in NCAA Division III history. A gifted athlete, the 6-1 Kelly scored 2,607 points and pulled down 1,204 rebounds in four years, earning Kodak All-America honors three consecutive seasons. In her senior season (1992-93), Kelly was voted National Player of the Year by the Women's Basketball Coaches Association after averaging more than 26 points per game. She set 22 conference and 24 school records, was conference MVP three times and was also named Midwest Sports Channel NCAA Division III Women's Athlete of the Year. In January of 2006, Kelly was one of five players selected to the NCAA Division III 25th Anniversary Team.

Laurie Kelly is the ninth head coach in the history of the Gustavus women's basketball program. Heading into the 2014-15 season, the Gusties have compiled an all-time record of 632-434 (.593), winning two Minnesota Intercollegiate Athletic Conference championships and making five NCAA tournament appearances.

In addition to her coaching duties, Kelly serves as the coordinator of the Gustavus Health Promotion program (GHP). The Gustavus Health Promotion program offers employees at Gustavus a variety of educational opportunities, assessment tools, and physical activity experiences so that they can achieve and maintain a healthy lifestyle.

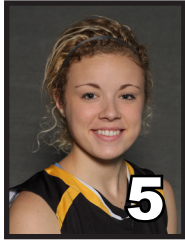
Kelly lives in St. Peter with and her husband, Matt, and their two daughters, Morgan and Madison .



2014-15 TV/RADIO ROSTER



3
EMME
EDO
Guard - First-year
Apple Valley, Minn.



5
KELSEY
CARPENTER
Guard - First-year
St. Peter, Minn.



10
MIKAYLA
MILLER
Guard - First-year
Goodue, Minn.



11
EMILY
FITZSIMMONS
Guard - Senior
Good Thunder, Minn.



12
ANNE
ODEGARD
Guard - Sophomore
St. Paul, Minn.



14
KATE
THIESSE
Forward - First-year
Welcome, Minn.



15
SIRI
SVIGGUM
Guard - First-year
Dennison, Minn.



20
HANNAH
SILVA-BREEN
Forward - First-year
Prior Lake, Minn.



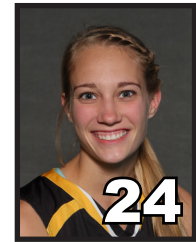
21
MORGAN
IVERSON
Forward - Sophomore
Waconia, Minn.



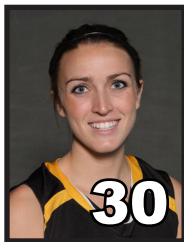
22
JULIE
SOHRE
Forward - Junior
Good Thunder, Minn.



23
HEATHER
HOHENSTEIN
Guard - Junior
Garden City, Minn.



24
TAYLOR
EBNET
Guard - Sophomore
Lake Lillian, Minn.



30
KELLE
NETT
Forward - Junior
Spring Valley, Ill.



32
HANNAH
HOWARD
Guard - Sophomore
St. Paul, Minn.



33
LINDSEY
JOHNSON
Forward - Junior
Edina, Minn.



34
MADDIE
EHRICH
Guard - Senior
Eden Prairie, Minn.



40
ANNA
LUNDQUIST
Post - Junior
Rochester, Minn.



42
EMMALINE
CRAWFORD
Post - Sophomore
Mankato, Minn.



43
MIRANDA
RICE
Forward - First-year
Forest Lake, Minn.



44
STEPHANIE
KLOCKMANN
Post - First-year
Browntown, Minn.



50
CARA
CHRISTIANSSEN
Post - Sophomore
North Mankato, Minn.



LAURIE
KELLY
Head Coach



DAN
WOLFE
Assistant Coach



2014-15 GUSTAVUS ADOLPHUS WOMEN'S BASKETBALL GAME NOTES

GUSTAVUS VS. SAINT MARY'S | SATURDAY, JANUARY 10

2014-15 COMBINED SEASON STATISTICS

RECORD:	OVERALL	HOME	AWAY	NEUTRAL
ALL GAMES	10-2	5-0	4-1	1-1
CONFERENCE	4-1	2-0	2-1	0-0
NON-CONFERENCE	6-1	3-0	2-0	1-1

#	Player	gp-gs	min	avg	Total		3-Point		F-Throw		Rebounds				pf	dq	a	to	blk	stl	pts	avg
					fg-fga	pct	3fg-fga	pct	ft-fa	pct	off	def	tot	avg								
10	Mikayla Miller	12-12	387	32.2	76-192	.396	16-61	.262	56-74	.757	16	56	72	6.0	28	0	44	58	1	40	224	18.7
33	Lindsey Johnson	12-12	315	26.3	44-83	.530	9-17	.529	16-16	1.000	11	50	61	5.1	26	0	26	20	2	9	113	9.4
43	Miranda Rice	12-12	289	24.1	37-76	.487	0-0	.000	18-30	.600	24	35	59	4.9	31	0	10	22	1	22	92	7.7
05	Kelsey Carpenter	12-2	273	22.8	31-73	.425	18-40	.450	11-15	.733	2	13	15	1.3	21	0	15	21	0	8	91	7.6
32	Hannah Howard	12-11	269	22.4	33-70	.471	0-2	.000	25-35	.714	22	26	48	4.0	34	1	18	21	4	22	91	7.6
34	Maddie Ehrich	12-11	297	24.8	26-64	.406	0-3	.000	26-37	.703	12	22	34	2.8	27	0	27	18	1	12	78	6.5
21	Morgan Iverson	1-0	25	25.0	1-2	.500	1-1	1.000	2-2	1.000	0	2	2	2.0	3	0	0	3	0	0	5	5.0
42	Emmaline Crawford	4-0	40	10.0	5-9	.556	0-0	.000	7-11	.636	3	7	10	2.5	4	0	2	3	1	2	17	4.3
44	Stephanie Klockmann	9-0	108	12.0	13-19	.684	0-0	.000	7-12	.583	13	11	24	2.7	20	0	5	4	1	7	33	3.7
15	Siri Sviggum	12-0	164	13.7	11-23	.478	5-14	.357	13-16	.813	9	14	23	1.9	9	0	7	6	1	5	40	3.3
12	Anne Odegard	3-0	11	3.7	3-6	.500	0-3	.000	3-3	1.000	0	0	0	0.0	1	0	0	2	0	0	9	3.0
40	Anna Lundquist	10-0	57	5.7	4-15	.267	0-0	.000	11-13	.846	8	13	21	2.1	9	0	1	5	1	2	19	1.9
22	Julie Sohre	3-0	17	5.7	2-2	1.000	0-0	.000	1-2	.500	0	4	4	1.3	2	0	1	2	0	1	5	1.7
24	Taylor Ebnet	2-0	7	3.5	0-1	.000	0-0	.000	2-2	1.000	2	1	3	1.5	1	0	1	3	0	0	2	1.0
11	Emily FitzSimmons	3-0	16	5.3	1-2	.500	1-1	1.000	0-0	.000	0	2	2	0.7	2	0	1	3	0	1	3	1.0
50	Cara Christiansen	5-0	25	5.0	1-2	.500	0-0	.000	3-4	.750	1	3	4	0.8	5	0	1	5	0	0	5	1.0
03	Emee Udo	11-0	79	7.2	4-11	.364	0-0	.000	2-3	.667	3	11	14	1.3	4	0	4	6	1	2	10	0.9
30	Kelle Nett	4-0	7	1.8	0-1	.000	0-0	.000	2-2	1.000	1	2	3	0.8	0	0	2	0	0	0	2	0.5
23	Heather Hohenstein	6-0	38	6.3	1-3	.333	0-0	.000	0-0	.000	0	1	1	0.2	4	0	4	7	0	1	2	0.3
20	Hannah Silva-Breen	1-0	2	2.0	0-0	.000	0-0	.000	0-0	.000	0	0	0	0.0	0	0	0	0	0	0	0	0.0
Total.....		12	2426		293-652	.449	50-142	.352	205-277	.740	148	302	450	37.5	231	1	169	224	14	134	841	70.1
Opponents.....		12	2429		253-633	.400	72-213	.338	138-228	.605	135	251	386	32.2	228	-	136	250	30	109	716	59.7

TEAM STATISTICS	GAC	OPP
SCORING	841	716
Points per game	70.1	59.7
Scoring margin	+10.4	-
FIELD GOALS-ATT	293-652	253-633
Field goal pct	.449	.400
3 POINT FG-ATT	50-142	72-213
3-point FG pct	.352	.338
3-pt FG made per game	4.2	6.0
FREE THROWS-ATT	205-277	138-228
Free throw pct	.740	.605
F-Throws made per game	17.1	11.5
REBOUNDS	450	386
Rebounds per game	37.5	32.2
Rebounding margin	+5.3	-
ASSISTS	169	136
Assists per game	14.1	11.3
TURNOVERS	224	250
Turnovers per game	18.7	20.8
Turnover margin	+2.2	-
Assist/turnover ratio	0.8	0.5
STEALS	134	109
Steals per game	11.2	9.1
BLOCKS	14	30
Blocks per game	1.2	2.5
ATTENDANCE	771	1282
Home games-Avg/Game	5-154	5-170
Neutral site-Avg/Game	-	2-215

Date	Opponent	Score	Att.
11-15-14	CROWN COLLEGE	w 31-81	182
11-16-14	MARTIN LUTHER	w 58-74	72
11-22-14	MINNESOTA MORRIS	w 67-82	220
11/29/14	vs Dubuque	L 76-78	347
11/30/14	vs St. Scholastica	w 58-71	83
* 12/3/14	at St. Thomas	L 43-76	200
* 12/6/14	ST. CATHERINE	w 50-61	213
* 12/13/14	HAMLIN UNIVERSITY	w 68-70	84
12/20/14	at Northwestern (Minn.)	w 71-62	347
12/30/14	at UW-River Falls	wot 65-57	204
* 1/3/2015	at St. Olaf	w 64-62	0
* 01/07/15	at Augsburg College	w 83-49	101

* - Conference game



2014-15 GUSTAVUS ADOLPHUS WOMEN'S BASKETBALL GAME NOTES

GUSTAVUS VS. SAINT MARY'S | SATURDAY, JANUARY 10

2014-15 GAME-BY-GAME STATISTICAL COMPARISON

Opponent	1st	2nd	Score	Mar	Total FG	FG Pct	3-Pointers	3FG Pct	Free Throws	FT Pct	Rebounds	Assist	T/Over	Block	Steal	Fouls
CROWN COLLEGE	43/17	38/14	81-31	+50	26-60/10-44	.433/.227	8-20/2-9	.400/.222	21-28/9-20	.750/.450	44/34 +10	15/5	21/34	2/0	14/10	26/20
MARTIN LUTHER	38/24	36/34	74-58	+16	28-63/19-53	.444/.358	0-4/4-13	.000/.308	18-20/16-24	.900/.667	43/31 +12	17/9	21/24	2/3	14/11	20/18
MINNESOTA MORRIS	42/28	40/39	82-67	+15	28-53/22-53	.528/.415	5-11/9-18	.455/.500	21-25/14-23	.840/.609	38/28 +10	18/11	17/20	1/2	12/2	21/18
Dubuque	34/36	42/42	76-78	(2)	28-53/25-55	.528/.455	6-14/10-18	.429/.556	14-23/18-26	.609/.692	36/26 +10	19/13	22/14	1/0	8/11	24/17
St. Scholastica	31/21	40/37	71-58	+13	25-52/20-56	.481/.357	5-14/5-16	.357/.313	16-20/13-15	.800/.867	42/24 +18	12/7	20/15	2/1	8/9	16/14
St. Thomas	27/39	16/37	43-76	(33)	14-40/27-51	.350/.529	4-10/7-19	.400/.368	11-14/15-19	.786/.789	24/31 (7)	12/17	24/15	1/7	7/11	20/19
ST. CATHERINE	32/27	29/23	61-50	+11	20-44/16-55	.455/.291	3-14/4-17	.214/.235	18-24/14-22	.750/.636	42/31 +11	11/9	20/12	0/2	9/12	17/22
HAMLIN UNIVERSITY	41/23	29/45	70-68	+2	24-58/29-55	.414/.527	4-12/9-23	.333/.391	18-23/1-6	.783/.167	31/37 (6)	10/13	12/22	0/4	10/2	13/19
Northwestern (Minn.)	30/32	41/30	71-62	+9	22-66/25-56	.333/.446	5-10/6-26	.500/.231	22-29/6-13	.759/.462	39/44 (5)	10/12	14/26	0/5	13/6	15/24
UW-River Falls	28/33	23/18	65-57	+8	24-48/21-53	.500/.396	3-6/4-13	.500/.308	14-25/11-27	.560/.407	29/42 (13)	9/13	23/30	2/0	18/16	24/19
St. Olaf	26/34	38/28	64-62	+2	20-54/21-50	.370/.420	6-20/9-22	.300/.409	18-25/11-19	.720/.579	38/34 +4	10/14	13/17	2/0	8/6	17/21
Augsburg College	43/20	40/29	83-49	+34	34-61/18-52	.557/.346	1-7/3-19	.143/.158	14-21/10-14	.667/.714	44/24 +20	26/13	17/21	1/6	13/13	18/17

Note: Game totals are displayed in the format TEAM/OPPONENT for each category