

GUSTAVUS ADOLPHUS COLLEGE

2014-15 WOMEN'S BASKETBALL

2014-15 SCHEDULE/RESULTS

DATE	OPPONENT	TIME/RESULT
11/8	CROWN COLLEGE	W 81-31
11/9	MARTIN LUTHER	W 74-58
11/22	MINNESOTA MORRIS	W 82-67
11/29	University of Dubuque#	L 76-78
11/30	College of St. Scholastica#	W 71-58
12/3	University of St. Thomas*	L 43-76
12/6	ST. CATHERINE UNIVERSITY*	W 61-50
12/13	HAMLIN UNIVERSITY*	W 70-68
12/20	University of Northwestern	W 71-62
12/30	UW-River Falls	W 65-57 OT
1/3	St. Olaf College*	W 64-62
1/7	Augsburg College*	W 83-49
1/10	Saint Mary's University*	W 67-74
1/14	CONCORDIA COLLEGE*	5:45 p.m.
1/17	College of Saint Benedict*	3:00 p.m.
1/21	BETHEL UNIVERSITY*	7:00 p.m.
1/24	St. Catherine University*	3:00 p.m.
1/28	UNIVERSITY OF ST. THOMAS*	7:00 p.m.
1/31	Hamline University*	1:00 p.m.
2/4	Carleton College*	7:00 p.m.
2/7	ST. OLAF COLLEGE*	1:00 p.m.
2/11	Concordia College*	5:45 p.m.
2/14	SAINT MARY'S UNIVERSITY*	1:00 p.m.
2/18	MACALESTER COLLEGE*	7:00 p.m.
2/21	COLLEGE OF SAINT BENEDICT*	1:00 p.m.

HOME GAMES in BOLD FACE CAPS; all times Central

* MIAC game

UW-Stout Thanksgiving Tournament

GUSTAVUS QUICK FACTS

Location:	St. Peter, Minnesota
Address:	800 West College Ave. St. Peter, MN 56082
Founded:	1862
Enrollment:	2,500
Nickname:	Golden Gusties
School Colors:	Black and Gold
Home Venue:	Gus Young Court
Conference:	Minnesota Intercollegiate Athletic
NCAA Affiliation:	NCAA Division III
President:	Rebecca M. Bergman
Athletic Director:	Tom Brown
Assistant Athletic Director:	Jared Phillips
Athletic Trainer:	Troy Banse
Equipment Manager:	Jed Friedrich
Sports Information Director:	Ethan Armstrong
Sports Information Graduate Assistant:	Nick Hoelmer

GUSTAVUS ADOLPHUS COLLEGE

"Golden Gusties"

10-3 Overall, 4-2 MIAC

CONCORDIA COLLEGE

"Cobbers"

8-5 Overall, 4-2 MIAC

GAME FOURTEEN

GAME INFORMATION

DATE: Wednesday, January 14

TIME: 5:45 p.m.

SITE: St. Peter, Minnesota

VENUE: Gus Young Court

WEB VIDEO: <http://portal.stretchinternet.com/gac>

LIVE STATS: <http://portal.stretchinternet.com/gac>

SETTING THE SCENE

The Gustavus Adolphus women's basketball team makes its return to Gus Young Court this week when it hosts Concordia College on Wednesday, Jan. 14 at 5:45 p.m. After seeing their six-game winning-streak come to an end on Saturday with a 74-67 loss to Saint Mary's University, the Gusties - who are now 10-3 overall and 4-2 in the MIAC - seek a return to the win column on their home court where they haven't played since Dec. 13. The Concordia women's basketball team had its three-game winning-streak snapped on Saturday when it fell 74-48 on the road to St. Thomas. The Cobbers roll into St. Peter with at 8-5 overall and 4-2 in the MIAC.

LIVE COVERAGE

Live video and live stats for Wednesday night's games will be provided by Gustavus. New this season, Gustavus will provide a high definition video stream of all home games for viewing on your computer, tablet, or smart phone through GameCentral by Stretch Internet. Sports Information Director Ethan Armstrong will be at Gus Young Court for the live call of the action.

LAST TIME OUT

The Gustavus women's basketball team fell short of a fifth straight road victory last Saturday when it took on Saint Mary's at the SMU Gym. Although the Gusties got off to a slow start and trailed 40-33 at the half, they were able to claw their way back into the game during the opening stages of the second half and eventually tie the game at 48-48 with 14:37 on the clock. With the score tied 50-50 with 13:48 on the clock, the Cardinals went on a 16-1 scoring-run to put them on top 66-51 with 6:54 to go. Despite cutting the lead to three points (66-63) with 1:58 to go, the Saint Mary's run turned out to be the difference, as Gustavus could not make up the remainder of the gap.

GUSTAVUS PROJECTED STARTERS

#	Player	Pos.	Yr.	Ht.	Hometown	PPG	RPG	FG%	3PT%	FT%	MIN.
10	Mikayla Miller	G	Fy.	5-8	Goodhue, Minn.	18.9	6.5	.401	.250	.759	32.4
32	Hannah Howard	W	So.	5-9	St. Paul, Minn.	7.6	4.3	.450	.000	.730	23.4
33	Lindsey Johnson	F	Jr.	6-0	Edina, Minn.	9.6	5.0	.522	.476	1.000	26.1
34	Maddie Ehrich	G	Sr.	5-9	Eden Prairie, Minn.	6.8	2.9	.423	.000	.718	25.5
43	Miranda Rice	F	Fy.	5-11	Forest Lake, Minn.	7.8	4.9	.477	.000	.625	24.3

CONCORDIA PROJECTED STARTERS

#	Player	Pos.	Yr.	Ht.	Hometown	PPG	RPG	FG%	3PT%	FT%	MIN.
03	Greta Walsh	G	So.	5-6	Litchfield, Minn.	8.5	1.6	.358	.364	.765	25.8
13	Hannah Jeske	G	Jr.	5-9	Bismarck, N.D.	3.7	3.9	.391	.269	.556	22.9
22	Olivia Johnson	F	Jr.	5-10	Walcott, N.D.	8.6	7.5	.362	.318	.853	25.5
30	Erin Januschka	F	Sr.	6-0	St. Cloud, Minn.	9.0	6.2	.460	.091	.571	24.6
32	Alley Fisher	G	Sr.	5-7	Fargo, N.D.	15.8	2.4	.432	.415	.765	30.1



TWITTER
[@GustieAthletics](https://twitter.com/GustieAthletics)



FACEBOOK
facebook.com/GustieAthletics



GAME CENTRAL
client.stretchinternet.com/client/gac.portal



YOUTUBE
youtube.com/gustavusathletics



INSTAGRAM
instagram.com/gustieathletics



FLICKR
flickr.com/photos/gogusties



2014-15 GUSTAVUS ADOLPHUS WOMEN'S BASKETBALL GAME NOTES

GUSTAVUS VS. CONCORDIA | WEDNESDAY, JANUARY 14

STATISTICAL COMPARISON

GUSTAVUS	vs.	CONCORDIA
10-3	Overall Record	8-4
4-2	Conference Record	4-2
69.8	Points Per Game	64.3
+9.1	Scoring Margin	+4.4
.446	Field Goal Percentage	.389
.333	3-PT Field Goal Percentage	.346
.747	Free Throw Percentage	.709
493	Rebounds	478
37.9	Rebounds Per Game	36.8
+5.9	Rebounding Margin	-0.3
181	Assists	150
13.9	Assists Per Game	11.5
0.7	Assist/Turnover Ratio	0.7
18.6	Turnovers Per Game	16.8
+1.8	Turnover Margin	+2.6

GUSTAVUS'S RECORD WHEN...

At home...	5-0
On the road...	4-2
A neutral site...	1-1
In MIAC games...	4-2
In non-conference games...	6-1
When leading after first half...	7-0
When tied after first half...	0-0
When trailing after first half...	3-3
In overtime...	1-0
GAC has more rebounds...	7-2
Opponent has more rebounds...	3-1
Rebounds equal...	0-0
GAC has more assists...	6-0
Opponent has more assists...	4-3
Assists equal...	0-0
GAC commits more fouls...	6-3
Opponent commits more fouls...	4-0
Fouls equal...	0-0
GAC commits more turnovers...	1-3
Opponent commits more turnovers...	9-0
Turnovers equal...	0-0
GAC scores first...	6-1
Opponent scores first...	4-2
Games decided by three or less...	2-1
Games decided by single figures...	4-2
Games decided by double figures...	6-1
In November...	3-1
In December...	4-1
In January...	2-1
In February...	0-0
Following a win...	7-3
Following a loss...	2-0

Gustavus shot 40.6-percent (26-64), made just 1-of-11 three pointers, and knocked down 87.5-percent (14-16) of its free throws. The Gusties won the rebounding battle 43-to-30 but committed 18 turnovers to the Cardinals' 15. Mikayla Miller (Fy., Goodhue, Minn.) led the Gusties with the first double-double of her collegiate career by scoring a game-high 22 points and bringing down a game-high 13 rebounds (10 defensive). Lindsey Johnson (Jr., Edina, Minn.) and Miranda Rice (Fy., Forest Lake, Minn.) both added 10 points to round out Gustavus's top scorers.

SERIES HISTORY

Wednesday's game will be the 73rd meeting between Gustavus and Concordia in women's basketball. The Cobbers hold the advantage in the all-time series with a record of 53-19. Concordia swept the Gusties in last year's regular season series with a 70-47 win on Dec. 7 in St. Peter and a 73-71 victory on Jan. 25 in Moorhead. Gustavus has not beaten the Cobbers since the MIAC Playoff Semifinals on Feb. 23, 2012 when it advanced to the playoff title game with a 61-49 win.

SCOUTING THE COBBERS

The Concordia women's basketball team got off to a hot start in 2015 with three consecutive victories over MIAC opponents Saint Mary's (55-41), Macalester (73-56), and Bethel (68-56). The Cobbers saw their three-game win-streak come to an end last Saturday when they suffered a 74-48 loss to St. Thomas in St. Paul.

Although Concordia trailed by six points at halftime, the Tommies scored 43 points in the second half to run away with the 26-point win. The Cobbers shot 32.6-percent from the field and were led in scoring by Alley Fisher who scored 11 points after going 2-for-8 from the field and 7-for-8 at the line.

Alley Fisher has consistently proven to be the Cobber to stop, reaching double-figure points in all but one game this season and leading the team in scoring the past five outings. During the last five games, Fisher is scoring 18 points per game - nearly three points more than her season average of 15.8. She is currently the fourth-ranked scorer in the league and is shooting 43.2-percent from the field.

As a team, Concordia is averaging 64.3 points per game (7th/MIAC) and is shooting 38.9-percent (8th/MIAC) from the field. Within conference play, the Cobbers lead the league at the line (82.4%) and rank third from three-point range (37.4%). Over their last three games, Concordia is shooting 51.1-percent from behind the arc and 84.2-percent at the charity stripe.

NEWS AND NOTES

Double-Double - Gustavus rookie Mikayla Miller posted the first double-double of her career against Saint Mary's with 22 points and 13 rebounds. Miller's rebounding total was the highest by a Gustie this season, edging Miranda Rice's 12-rebound performance against Northwestern on Dec. 20. Miller is the second player on the team to record a double-double this season, as Hannah Howard (So., St. Paul, Minn.) scored 19 points and brought down 10 boards at Augsburg on Jan. 7.

Back At Home - The Gustavus women's basketball team returns home to Gus Young Court following a 31-day absence during which the Gusties compiled a record of 4-1 over five straight road contests. So far this season, Laurie Kelly's squad is unbeaten at home with a 5-0 record that includes MIAC wins over St. Catherine (61-50) and Hamline (70-68). The Gusties are averaging 73.6 points and are shooting 32.8-percent from the field on their home court.

By The Numbers...

+5.8 - Gustavus's second ranked rebounding margin per game within conference play this season. The Gusties have been outrebounded in just two of their six league games, yet rank eighth inside league play in rebounds per game (37). Gustavus has been disciplined on the glass as of late, outrebounding Augsburg by 20 and Saint Mary's by 13. The Gusties have been outrebounded a total of four times this season by an average of 7.8 boards in those four games combined.

MIAC STANDINGS/SCHEDULE

SCHOOL	MIAC	OVERALL	AROUND THE LEAGUE
St. Thomas	6-0	13-0	Wednesday, January 14
Gustavus	4-2	10-3	Concordia at Gustavus 5:45 p.m.
Concordia	4-2	8-5	St. Thomas at St. Catherine 7:00 p.m.
Saint Benedict	4-2	7-6	Hamline at Carleton 7:00 p.m.
Bethel	3-3	9-3	Macalester at Bethel 7:00 p.m.
Saint Mary's	3-3	9-4	Saint Benedict at Saint Mary's 7:00 p.m.
Hamline	3-3	8-5	St. Olaf at Augsburg 7:00 p.m.
Carleton	3-3	5-8	
Augsburg	2-4	7-6	
St. Catherine	2-4	7-6	
St. Olaf	2-4	5-8	
Macalester	0-6	3-10	



2014-15 GUSTAVUS ADOLPHUS WOMEN'S BASKETBALL GAME NOTES

GUSTAVUS VS. CONCORDIA | WEDNESDAY, JANUARY 14

2014-15 GUSTAVUS WOMEN'S BASKETBALL TEAM



2014-15 GUSTAVUS WOMEN'S BASKETBALL NUMERICAL ROSTER

No.	Name	Year	Position	Height	Hometown	High School
3	Emee Udo	First-year	Guard	5-9	Apple Valley, Minn.	Eastview
5	Kelsey Carpenter	Sophomore	Guard	5-8	St. Peter, Minn.	St. Peter
10	Mikayla Miller	First-year	Guard	5-8	Goodhue, Minn.	Goodhue
11	Emily FitzSimmons*	Senior	Guard	5-7	Good Thunder, Minn.	Maple River
12	Anne Odegard	Sophomore	Guard	5-9	St. Paul, Minn.	Cretin-Derham Hall
14	Kate Thiesse	First-year	Forward	5-10	Welcome, Minn.	Martin County West
15	Siri Sviggum	First-year	Guard	5-7	Dennison, Minn.	Kenyon-Wanamingo
20	Hannah Silva-Breen	First-year	Forward	5-10	Prior Lake, Minn.	Prior Lake
21	Morgan Iverson	Sophomore	Forward	5-9	Waconia, Minn.	Waconia
22	Julie Sohre	Junior	Forward	5-10	Good Thunder, Minn.	Maple River
23	Heather Hohenstein	Junior	Guard	5-5	Garden City, Minn.	Lake Crystal Wellcome Memorial
24	Taylor Ebnet	Sophomore	Guard	5-7	Lake Lillian, Minn.	BOLD
30	Kelle Nett	Junior	Forward	5-10	Spring Valley, Ill.	Hall
32	Hannah Howard	Sophomore	Guard	5-9	St. Paul, Minn.	Cretin-Derham Hall
33	Lindsey Johnson*	Junior	Forward	6-0	Edina, Minn.	Edina
34	Maddie Ehrich	Senior	Guard	5-9	Eden Prairie, Minn.	Lion's Gate Christian Academy
40	Anna Lundquist	Junior	Post	5-11	Rochester, Minn.	Mayo
42	Emmaline Crawford	Sophomore	Post	6-0	Mankato, Minn.	East
43	Miranda Rice	First-year	Forward	5-11	Forest Lake, Minn.	Forest Lake
44	Stephanie Klockmann	First-year	Post	5-10	Brownston, Minn.	Glencoe-Silver Lake
50	Cara Christiansen	Sophomore	Forward	5-10	North Mankato, Minn.	West

Head Coach: Laurie Kelly (Third Season)

Assistant Coaches: Dan Wolfe, Angie Potts, Nate Otto



HEAD COACH LAURIE KELLY

Third Season

37-27 at Gustavus

260-216 Overall

Office: 507-933-6145

Email: lkelly@gustavus.edu

Laurie Kelly is in her third season as the head coach of the Gustavus women's basketball team. Kelly, a 1993 graduate of the University of St. Thomas with a degree in speech communications, came to Gustavus from Northern Arizona University in Flagstaff, where she directed the Division I Lumberjacks for nine seasons.

Thanks to a late surge during which the 2013-14 Gustavus women's basketball team won seven of eight games from late-January to mid-February, the Gusties were able finish sixth in the conference standings with a record of 11-11 and earn a trip to the MIAC Playoffs for an MIAC-best 14th consecutive season. Gustavus finished the year with a record of 14-12 overall after falling on the road to No. 3-seeded St. Thomas 66-51 in the quarterfinals of the MIAC Playoffs.

Senior guard Julia Dysythe (White Bear Lake, Minn.) and sophomore post Karina Schroeder (Lake Crystal, Minn.) were both honored as members of the All-Conference Team following the season. Dysythe, a first time all-conference performer, scored a career-high 382 points (13.7 ppg) and shot 42.1-percent from the field. Schroeder, a member of the MIAC All-Rookie Team last season, established herself as one of the top post players in the league after averaging 14.2 points per game, shooting 53.3-percent from the field, and bringing down an average of 8.9 rebounds per game. She led the team in all three categories and finished with the second-best field goal shooting percentage in the league at 51.6-percent against league opponents.

A Rochester, Minnesota, native, Kelly made a quick ascent through the Division II and I coaching ranks after record setting Division III playing career at the University of St. Thomas in the early '90s. In the past nine years at Northern Arizona, she has compiled the most wins in the program's history (117), while also directing the team to its first-ever Big Sky Conference tournament title and NCAA tournament bid in the 2005-06 season. During Kelly's tenure, the Lumberjacks advanced to the Big Sky tournament six times with two appearances in the championship game (2006, 2007), and her teams have registered two of the three 20-win seasons in the program's history.

In addition to quality on the floor, her squads have also been strong in the classroom, with four players earning CoSIDA Academic All-District honors including one Academic All-American. The Lumberjacks were recognized in the Women's Basketball Coaches Association Top 25 Academic Honor Roll six times, with two Top Ten national rankings.

Following the 2012-13 season, the Gustavus women's basketball team achieved a significant milestone when the Women's Basketball Coaches Association (WBCA) announced its Academic Top 25 Team Honor Roll following the year. Making their 15th appearance on the NCAA Division III honor roll, the Gusties were recognized as the team with the top cumulative grade point average in country at a 3.600 – a first in the program's history.

Prior to her position at Northern Arizona, Kelly coached at Binghamton University in New York and built the Bearcats into one of the top Division II programs in the country before helping the institution transition to a Division I program in 2001-02. In that first year of Division I competition, Kelly directed the team to a 19-9 record and a second-place finish in the America East Conference. During her five years at Binghamton, Kelly compiled a record of 94-22, including a mark of 75-13 in the program's final three years at the Division II level, and her squads won New England Collegiate Conference (NECC) titles in 1999 and 2000 and Eastern Collegiate Athletic Conference (ECAC) titles in 2000 and 2001. She was named ECAC Coach of the Year in 2000 and New York State Coach of the Year in 2002. Kelly started her collegiate coaching career as the graduate assistant coach at Minnesota State University, Mankato from 1996 to 1998. While she was at Minnesota State, Mankato she earned a master's degree in physical education with an emphasis in sports administration.

Before her success in the coaching ranks, Laurie Trow Kelly was a standout player at the University of St. Thomas from 1989 to 1993 and is recognized by many as one of the greatest players in NCAA Division III history. A gifted athlete, the 6-1 Kelly scored 2,607 points and pulled down 1,204 rebounds in four years, earning Kodak All-America honors three consecutive seasons. In her senior season (1992-93), Kelly was voted National Player of the Year by the Women's Basketball Coaches Association after averaging more than 26 points per game. She set 22 conference and 24 school records, was conference MVP three times and was also named Midwest Sports Channel NCAA Division III Women's Athlete of the Year. In January of 2006, Kelly was one of five players selected to the NCAA Division III 25th Anniversary Team.

Laurie Kelly is the ninth head coach in the history of the Gustavus women's basketball program. Heading into the 2014-15 season, the Gusties have compiled an all-time record of 632-434 (.593), winning two Minnesota Intercollegiate Athletic Conference championships and making five NCAA tournament appearances.

In addition to her coaching duties, Kelly serves as the coordinator of the Gustavus Health Promotion program (GHP). The Gustavus Health Promotion program offers employees at Gustavus a variety of educational opportunities, assessment tools, and physical activity experiences so that they can achieve and maintain a healthy lifestyle.

Kelly lives in St. Peter with and her husband, Matt, and their two daughters, Morgan and Madison.





2014-15 TV/RADIO ROSTER



**EMME
EDO**
Guard - First-year
Apple Valley, Minn.



**KELSEY
CARPENTER**
Guard - First-year
St. Peter, Minn.



**MIKAYLA
MILLER**
Guard - First-year
Goodue, Minn.



**EMILY
FITZSIMMONS**
Guard - Senior
Good Thunder, Minn.



**ANNE
ODEGARD**
Guard - Sophomore
St. Paul, Minn.



**KATE
THIESSE**
Forward - First-year
Welcome, Minn.



**SIRI
SVIGGUM**
Guard - First-year
Dennison, Minn.



**HANNAH
SILVA-BREEN**
Forward - First-year
Prior Lake, Minn.



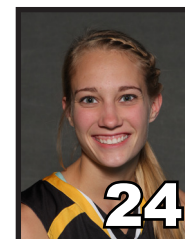
**MORGAN
IVERSON**
Forward - Sophomore
Waconia, Minn.



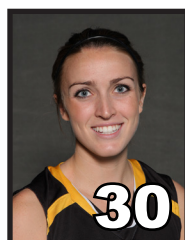
**JULIE
SOHRE**
Forward - Junior
Good Thunder, Minn.



**HEATHER
HOHENSTEIN**
Guard - Junior
Garden City, Minn.



**TAYLOR
EBNET**
Guard - Sophomore
Lake Lillian, Minn.



**KELLE
NETT**
Forward - Junior
Spring Valley, Ill.



**HANNAH
HOWARD**
Guard - Sophomore
St. Paul, Minn.



**LINDSEY
JOHNSON**
Forward - Junior
Edina, Minn.



**MADDIE
EHRICH**
Guard - Senior
Eden Prairie, Minn.



**ANNA
LUNDQUIST**
Post - Junior
Rochester, Minn.



**EMMALINE
CRAWFORD**
Post - Sophomore
Mankato, Minn.



**MIRANDA
RICE**
Forward - First-year
Forest Lake, Minn.



**STEPHANIE
KLOCKMANN**
Post - First-year
Browntown, Minn.



**CARA
CHRISTIENSEN**
Post - Sophomore
North Mankato, Minn.



**LAURIE
KELLY**
Head Coach



**DAN
WOLFE**
Assistant Coach



2014-15 GUSTAVUS ADOLPHUS WOMEN'S BASKETBALL GAME NOTES

GUSTAVUS VS. CONCORDIA | WEDNESDAY, JANUARY 14

2014-15 COMBINED SEASON STATISTICS

RECORD:	OVERALL	HOME	AWAY	NEUTRAL
ALL GAMES	10-3	5-0	4-2	1-1
CONFERENCE	4-2	2-0	2-2	0-0
NON-CONFERENCE	6-1	3-0	2-0	1-1

#	Player	gp-gs	min		Total		3-Point		F-Throw		Rebounds								pts	avg		
					fg-fga	pct	3fg-fga	pct	ft-fga	pct	off	def	tot	avg	pf	dq	a	to			blk	stl
10	Mikayla Miller	13-13	421	32.4	85-212	.401	16-64	.250	60-79	.759	19	66	85	6.5	32	0	47	64	1	41	246	18.9
33	Lindsey Johnson	13-13	339	26.1	48-92	.522	10-21	.476	19-19	1.000	11	54	65	5.0	31	1	29	20	3	9	125	9.6
43	Miranda Rice	13-13	316	24.3	41-86	.477	0-0	.000	20-32	.625	26	38	64	4.9	35	0	10	24	1	22	102	7.8
32	Hannah Howard	13-12	304	23.4	36-80	.450	0-3	.000	27-37	.730	24	32	56	4.3	37	1	21	25	4	24	99	7.6
05	Kelsey Carpenter	13-2	286	22.0	32-76	.421	18-41	.439	11-15	.733	2	13	15	1.2	23	0	15	23	0	8	93	7.2
34	Maddie Ehrich	13-12	331	25.5	30-71	.423	0-4	.000	28-39	.718	12	26	38	2.9	30	0	30	20	1	14	88	6.8
42	Emmaline Crawford	5-0	51	10.2	5-10	.500	0-0	.000	8-13	.615	5	8	13	2.6	9	1	2	4	1	3	18	3.6
44	Stephanie Klockmann	10-0	114	11.4	13-20	.650	0-0	.000	7-12	.583	14	11	25	2.5	20	0	5	5	1	7	33	3.3
15	Siri Sviggum	13-0	169	13.0	11-24	.458	5-15	.333	13-16	.813	9	14	23	1.8	9	0	7	6	1	5	40	3.1
12	Anne Odegard	3-0	11	3.7	3-6	.500	0-3	.000	3-3	1.000	0	0	0	0.0	1	0	0	2	0	0	9	3.0
21	Morgan Iverson	2-0	36	18.0	1-3	.333	1-1	1.000	2-2	1.000	0	2	2	1.0	4	0	0	3	0	0	5	2.5
40	Anna Lundquist	10-0	57	5.7	4-15	.267	0-0	.000	11-13	.846	8	13	21	2.1	9	0	1	5	1	2	19	1.9
22	Julie Sohre	3-0	17	5.7	2-2	1.000	0-0	.000	1-2	.500	0	4	4	1.3	2	0	1	2	0	1	5	1.7
24	Taylor Ebnet	3-0	7	2.3	1-2	.500	0-0	.000	2-2	1.000	3	1	4	1.3	1	0	1	3	0	0	4	1.3
11	Emily FitzSimmons	3-0	16	5.3	1-2	.500	1-1	1.000	0-0	.000	0	2	2	0.7	2	0	1	3	0	1	3	1.0
50	Cara Christiansen	5-0	25	5.0	1-2	.500	0-0	.000	3-4	.750	1	3	4	0.8	5	0	1	5	0	0	5	1.0
03	Emee Udo	11-0	79	7.2	4-11	.364	0-0	.000	2-3	.667	3	11	14	1.3	4	0	4	6	1	2	10	0.9
30	Kelle Nett	4-0	7	1.8	0-1	.000	0-0	.000	2-2	1.000	1	2	3	0.8	0	0	2	0	0	0	2	0.5
23	Heather Hohenstein	6-0	38	6.3	1-3	.333	0-0	.000	0-0	.000	0	1	1	0.2	4	0	4	7	0	1	2	0.3
20	Hannah Silva-Breen	1-0	2	2.0	0-0	.000	0-0	.000	0-0	.000	0	0	0	0.0	0	0	0	0	0	0	0	0.0
Total.....		13	2626		319-716	.446	51-153	.333	219-293	.747	162	331	493	37.9	258	3	181	242	15	140	908	69.8
Opponents.....		13	2629		279-683	.408	79-228	.346	153-259	.591	140	276	416	32.0	242	-	153	265	31	115	790	60.8

TEAM STATISTICS	GAC	OPP
SCORING	908	790
Points per game	69.8	60.8
Scoring margin	+9.1	-
FIELD GOALS-ATT	319-716	279-683
Field goal pct	.446	.408
3 POINT FG-ATT	51-153	79-228
3-point FG pct	.333	.346
3-pt FG made per game	3.9	6.1
FREE THROWS-ATT	219-293	153-259
Free throw pct	.747	.591
F-Throws made per game	16.8	11.8
REBOUNDS	493	416
Rebounds per game	37.9	32.0
Rebounding margin	+5.9	-
ASSISTS	181	153
Assists per game	13.9	11.8
TURNOVERS	242	265
Turnovers per game	18.6	20.4
Turnover margin	+1.8	-
Assist/turnover ratio	0.7	0.6
STEALS	140	115
Steals per game	10.8	8.8
BLOCKS	15	31
Blocks per game	1.2	2.4
ATTENDANCE	771	1512
Home games-Avg/Game	5-154	6-180
Neutral site-Avg/Game	-	2-215

Date	Opponent		Score	Att.
11-15-14	CROWN COLLEGE	w	31-81	182
11-16-14	MARTIN LUTHER	w	58-74	72
11-22-14	MINNESOTA MORRIS	w	67-82	220
11/29/14	vs Dubuque	L	76-78	347
11/30/14	vs St. Scholastica	w	58-71	83
* 12/3/14	at St. Thomas	L	43-76	200
* 12/6/14	ST. CATHERINE	w	50-61	213
* 12/13/14	HAMLIN UNIVERSITY	w	68-70	84
12/20/14	at Northwestern (Minn.)	w	71-62	347
12/30/14	at UW-River Falls	wot	65-57	204
* 1/3/2015	at St. Olaf	w	64-62	0
* 01/07/15	at Augsburg College	w	83-49	101
* 1/10/15	at Saint Mary's	L	67-74	230

* - Conference game



2014-15 GUSTAVUS ADOLPHUS WOMEN'S BASKETBALL GAME NOTES

GUSTAVUS VS. CONCORDIA | WEDNESDAY, JANUARY 14

2014-15 GAME-BY-GAME STATISTICAL COMPARISON

Opponent	1st	2nd	Score	Mar	Total FG	FG Pct	3-Pointers	3FG Pct	Free Throws	FT Pct	Rebounds	Assist	T/Over	Block	Steal	Fouls
CROWN COLLEGE	43/17	38/14	81-31	+50	26-60/10-44	.433/.227	8-20/2-9	.400/.222	21-28/9-20	.750/.450	44/34 +10	15/5	21/34	2/0	14/10	26/20
MARTIN LUTHER	38/24	36/34	74-58	+16	28-63/19-53	.444/.358	0-4/4-13	.000/.308	18-20/16-24	.900/.667	43/31 +12	17/9	21/24	2/3	14/11	20/18
MINNESOTA MORRIS	42/28	40/39	82-67	+15	28-53/22-53	.528/.415	5-11/9-18	.455/.500	21-25/14-23	.840/.609	38/28 +10	18/11	17/20	1/2	12/2	21/18
Dubuque	34/36	42/42	76-78	(2)	28-53/25-55	.528/.455	6-14/10-18	.429/.556	14-23/18-26	.609/.692	36/26 +10	19/13	22/14	1/0	8/11	24/17
St. Scholastica	31/21	40/37	71-58	+13	25-52/20-56	.481/.357	5-14/5-16	.357/.313	16-20/13-15	.800/.867	42/24 +18	12/7	20/15	2/1	8/9	16/14
St. Thomas	27/39	16/37	43-76	(33)	14-40/27-51	.350/.529	4-10/7-19	.400/.368	11-14/15-19	.786/.789	24/31 (7)	12/17	24/15	1/7	7/11	20/19
ST. CATHERINE	32/27	29/23	61-50	+11	20-44/16-55	.455/.291	3-14/4-17	.214/.235	18-24/14-22	.750/.636	42/31 +11	11/9	20/12	0/2	9/12	17/22
HAMLIN UNIVERSITY	41/23	29/45	70-68	+2	24-58/29-55	.414/.527	4-12/9-23	.333/.391	18-23/1-6	.783/.167	31/37 (6)	10/13	12/22	0/4	10/2	13/19
Northwestern (Minn.)	30/32	41/30	71-62	+9	22-66/25-56	.333/.446	5-10/6-26	.500/.231	22-29/6-13	.759/.462	39/44 (5)	10/12	14/26	0/5	13/6	15/24
UW-River Falls	28/33	23/18	65-57	+8	24-48/21-53	.500/.396	3-6/4-13	.500/.308	14-25/11-27	.560/.407	29/42 (13)	9/13	23/30	2/0	18/16	24/19
St. Olaf	26/34	38/28	64-62	+2	20-54/21-50	.370/.420	6-20/9-22	.300/.409	18-25/11-19	.720/.579	38/34 +4	10/14	13/17	2/0	8/6	17/21
Augsburg College	43/20	40/29	83-49	+34	34-61/18-52	.557/.346	1-7/3-19	.143/.158	14-21/10-14	.667/.714	44/24 +20	26/13	17/21	1/6	13/13	18/17
Saint Mary's	33/40	34/34	67-74	(7)	26-64/26-50	.406/.520	1-11/7-15	.091/.467	14-16/15-31	.875/.484	43/30 +13	12/17	18/15	1/1	6/6	27/14

Note: Game totals are displayed in the format TEAM/OPPONENT for each category