

GUSTAVUS ADOLPHUS COLLEGE

2014-15 WOMEN'S BASKETBALL

2014-15 SCHEDULE/RESULTS

DATE	OPPONENT	TIME/RESULT
11/8	CROWN COLLEGE	W 81-31
11/9	MARTIN LUTHER	W 74-58
11/22	MINNESOTA MORRIS	W 82-67
11/29	University of Dubuque#	L 76-78
11/30	College of St. Scholastica#	W 71-58
12/3	University of St. Thomas*	L 43-76
12/6	ST. CATHERINE UNIVERSITY*	W 61-50
12/13	HAMLIN UNIVERSITY*	W 70-68
12/20	University of Northwestern	W 71-62
12/30	UW-River Falls	W 65-57 OT
1/3	St. Olaf College*	W 64-62
1/7	Augsburg College*	W 83-49
1/10	Saint Mary's University*	L 67-74
1/14	CONCORDIA COLLEGE*	W 64-57
1/17	College of Saint Benedict*	W 55-52
1/21	BETHEL UNIVERSITY*	7:00 p.m.
1/24	St. Catherine University*	3:00 p.m.
1/28	UNIVERSITY OF ST. THOMAS*	7:00 p.m.
1/31	Hamline University*	1:00 p.m.
2/4	Carleton College*	7:00 p.m.
2/7	ST. OLAF COLLEGE*	1:00 p.m.
2/11	Concordia College*	5:45 p.m.
2/14	SAINT MARY'S UNIVERSITY*	1:00 p.m.
2/18	MACALESTER COLLEGE*	7:00 p.m.
2/21	COLLEGE OF SAINT BENEDICT*	1:00 p.m.

HOME GAMES in BOLD FACE CAPS; all times Central

* MIAC game

UW-Stout Thanksgiving Tournament

GUSTAVUS QUICK FACTS

Location:	St. Peter, Minnesota
Address:	800 West College Ave. St. Peter, MN 56082
Founded:	1862
Enrollment:	2,500
Nickname:	Golden Gusties
School Colors:	Black and Gold
Home Venue:	Gus Young Court
Conference:	Minnesota Intercollegiate Athletic
NCAA Affiliation:	NCAA Division III
President:	Rebecca M. Bergman
Athletic Director:	Tom Brown
Assistant Athletic Director:	Jared Phillips
Athletic Trainer:	Troy Banse
Equipment Manager:	Jed Friedrich
Sports Information Director:	Ethan Armstrong
Sports Information Graduate Assistant:	Nick Hoelmer

GUSTAVUS ADOLPHUS COLLEGE

"Golden Gusties"

12-3 Overall, 6-2 MIAC

BETHEL UNIVERSITY

"Royals"

11-4 Overall, 5-3 MIAC

GAME SIXTEEN

GAME INFORMATION

DATE: Wednesday, January 21

TIME: 7:00 p.m.

SITE: St. Peter, Minnesota

VENUE: Gus Young Court

WEB VIDEO: <http://portal.stretchinternet.com/gac/>

LIVE STATS: <https://gustavus.edu/athletics/wbb/LIVE/xlive.htm>

SETTING THE SCENE

The Gustavus Adolphus women's basketball team will play host to the Royals of Bethel University in a Minnesota Intercollegiate Athletic Conference showdown on Wednesday, Jan. 21 at 7:00 p.m. on Gus Young Court. In a matchup between two of the top three teams in the league, Gustavus enters a new week sitting alone in second place in the conference standings at 12-3 overall and 6-2 in the MIAC. Bethel sits in a tie for third place alongside Saint Mary's at 11-4 overall and 5-3 in the MIAC. The Gusties are coming off 55-52 win over Saint Benedict, while Bethel came out victorious 71-58 over Carleton in a pair of games played last Saturday in St. Joseph and Northfield.

LIVE COVERAGE

Live video and live stats for Wednesday night's game will be provided by Gustavus. New this season, Gustavus will provide a high definition video stream of all home games for viewing on your computer, tablet, or smart phone through GameCentral by Stretch Internet. Sports Information Director Ethan Armstrong will be at Gus Young Court for the live call of the action.

LAST TIME OUT

The Gustavus women's basketball team will look to build on a 55-52 victory over Saint Benedict last Saturday at Claire Lynx Hall. Thanks to a strong defensive effort and clutch shooting in the final minute of the game, Gustavus was able to come away with its second straight victory. With :51 seconds left in the game, Kelsey Carpenter (So., St. Peter, Minn.) knocked down three-pointer to put the Gusties on top 53-52. Mikayla Miller (Fy., Goodhue, Minn.) then hit two free throws with :21 seconds left to put Gustavus up 55-52, and Saint Ben's failed to convert on its final two offensive possessions of the game.

Leading Gustavus's offense was Maddie Ehrich (Sr., Eden Prairie, Minn.) and Miranda Rice (Fy., Forest

GUSTAVUS PROJECTED STARTERS

#	Player	Pos.	Yr.	Ht.	Hometown	PPG	RPG	FG%	3PT%	FT%	MIN.
10	Mikayla Miller	G	Fy.	5-8	Goodhue, Minn.	17.9	6.7	.382	.265	.775	32.7
32	Hannah Howard	W	So.	5-9	St. Paul, Minn.	8.2	4.3	.478	.000	.714	23.7
33	Lindsey Johnson	F	Jr.	6-0	Edina, Minn.	9.1	4.9	.500	.455	1.000	26.1
34	Maddie Ehrich	G	Sr.	5-9	Eden Prairie, Minn.	7.5	3.0	.444	.200	.744	26.1
43	Miranda Rice	F	Fy.	5-11	Forest Lake, Minn.	7.9	4.9	.465	.000	.667	24.3

BETHEL PROJECTED STARTERS

#	Player	Pos.	Yr.	Ht.	Hometown	PPG	RPG	FG%	3PT%	FT%	MIN.
3	Shanni Moore	G	So.	5-9	Burnsville, Minn.	4.6	3.3	.324	.222	.500	23.9
5	Hannah Niewald	G	Jr.	5-7	Fridley, Minn.	7.5	4.5	.333	.261	.569	25.5
31	Sydney Schultz	G	Jr.	5-4	Dalton, Minn.	7.0	2.3	.288	.253	.526	22.6
33	Kalli Zimmermann	F	So.	5-9	Champlin, Minn.	12.5	7.0	.486	.083	.739	26.9
55	Rachel Parupsky	C	Jr.	6-2	Arden Hills, Minn.	14.1	7.5	.516	.000	.658	24.8



TWITTER
[@GustieAthletics](https://twitter.com/GustieAthletics)



FACEBOOK
facebook.com/GustieAthletics



GAME CENTRAL
client.stretchinternet.com/client/gac.portal



YOUTUBE
youtube.com/gustavusathletics



INSTAGRAM
instagram.com/gustieathletics



FLICKR
flickr.com/photos/goousties



Lake, Minn.) who both finished in double-figures. Ehrich scored 12 points on 5-of-11 shooting, while Rice added 10 after going 3-of-6. Miller led the team with a season-high 14 rebounds and also added nine points (2-11 FG, 2-2 3PT, 3-4 FT). As a team, the Gusties finished the game 20-for-52 (38.5%) from the floor, 3-for-5 (60%) from three, and 12-for-16 (75%) at the line.

STATISTICAL COMPARISON

GUSTAVUS	vs.	BETHEL
12-3	Overall Record	11-4
6-2	Conference Record	5-3
68.5	Points Per Game	65.2
+8.5	Scoring Margin	+11
.440	Field Goal Percentage	.391
.335	3-PT Field Goal Percentage	.244
.758	Free Throw Percentage	.624
570	Rebounds	643
38.0	Rebounds Per Game	38.8
+6.3	Rebounding Margin	42.9
206	Assists	190
13.7	Assists Per Game	12.7
0.7	Assist/Turnover Ratio	0.7
18.5	Turnovers Per Game	17.1
+1.4	Turnover Margin	+2.9

GUSTAVUS'S RECORD WHEN...

At home...	6-0
On the road...	5-2
A neutral site...	1-1
In MIAC games...	5-2
In non-conference games...	6-1
When leading after first half...	8-0
When tied after first half...	1-0
When trailing after first half...	3-3
In overtime...	1-0
GAC has more rebounds...	9-2
Opponent has more rebounds...	3-1
Rebounds equal...	0-0
GAC has more assists...	7-0
Opponent has more assists...	5-3
Assists equal...	0-0
GAC commits more fouls...	8-3
Opponent commits more fouls...	4-0
Fouls equal...	0-0
GAC commits more turnovers...	2-3
Opponent commits more turnovers...	10-0
Turnovers equal...	0-0
GAC scores first...	8-1
Opponent scores first...	4-2
Games decided by three or less...	3-1
Games decided by single figures...	6-2
Games decided by double figures...	6-1
In November...	3-1
In December...	4-1
In January...	4-1
In February...	0-0
Following a win...	8-3
Following a loss...	3-0

SERIES HISTORY

Wednesday night's game will be the 61st meeting between Gustavus and Bethel in women's basketball. The Gusties hold the advantage of the all-time series with a record of 36-24. The Royals swept the Gusties last season with a 64-50 win on Jan. 8 in Arden Hills and a 66-60 victory on Feb. 12 in St. Peter. Prior to last year's losses, the Gusties had previously won nine straight games against the Royals dating back to a 75-59 loss in the MIAC Playoff Quarterfinals on Feb. 24, 2009 at Gus Young Court.

SCOUTING THE ROYALS

The Bethel women's basketball team rolls into St. Peter riding a three-game winning-streak, which includes victories over Augsburg (71-65), Macalester (82-46), and Carleton (71-58). In their most recent outing last Saturday at Carleton, the Royals used a strong first half to jump out to a 39-22 lead at the break. Despite an improved second half, the deficit was too much for Carleton and Bethel cruised to its second straight double-digit win.

As she has done throughout the season, senior center Rachel Parupsky led Bethel against Carleton. She went 7-for-13 from the field and 6-for-9 from the free throw line for 20 points. Parupsky has paced the Royal offense the last two games and is currently the seventh-ranked scorer in the league with a 14.1 points per game average. Of the top ten scorers in the MIAC, she leads the way with a 51.6-percent shooting percentage from the field.

Balancing out Bethel's potent frontcourt is sophomore forward Kalli Zimmerman who is averaging 12.5 points per game and shooting 48.6-percent from the field. Together, Parupsky and Zimmerman average 14.4 rebounds per game. Parupsky ranks fourth in the MIAC with a 7.4 rebounding average, while Zimmerman ranks seventh averaging an even seven boards per game.

Within MIAC play, Bethel is scoring 63.2 points per game (6th) and is shooting 38.7-percent from the field (8th). With an offense predicated on the play of its interior, Bethel gets to the free throw line more than any team in the league, yet is shooting just 63-percent at the charity stripe (8th) inside conference play. Discipline on the glass will be key for Gustavus on Wednesday as it takes on the top rebounding team in the league. Bethel averages 43.6 rebounds per game against league foes and has been outrebounded by just two MIAC teams this season.

NEWS AND NOTES

Sticking To The Trend - With a 55-52 victory on the road last Saturday, Gustavus's matchup with Saint Benedict stayed true to the recent series history during the Laurie Kelly era of Gustie hoops. In the previous two seasons (four regular season meetings) leading up to Saturday's game, neither team could successfully defend its home court, and each game was decided by three points or less with the victor being determined in the final stages of the game.

Defense Shines - Gustavus held its opponent under the 40-percent mark from the field for the second straight and third time in the last four games on Saturday against Saint Ben's. Thanks to a stifling defensive effort that limited good looks throughout the afternoon, the Gusties held the Blazers to just 18 field goals and 32.7-percent shooting from the floor - the team's best effort since limiting Crown to 10 field goals and 22.7-percent shooting in the season-opener. Gustavus has held opponents to less than 20 field goals six times this season and is 6-0 in those contests. Within league play, the Gusties are limiting teams to 41.6-percent shooting from the field (8th) and 35-percent shooting from three (12th). Bethel heads into Wednesday one of the top defensive squads in the league, allowing 56.8 points per game (3rd) with an opponent field goal percentage of 31.3-percent (1st).

MIAC STANDINGS/SCHEDULE

SCHOOL	MIAC	OVERALL	AROUND THE LEAGUE
St. Thomas	8-0	15-0	Wednesday, January 21
Gustavus	6-2	12-3	Carleton at Concordia 5:45 p.m.
Bethel	5-3	11-4	Bethel at Gustavus 7:00 p.m.
Saint Mary's	5-3	11-4	St. Olaf at St. Thomas 7:00 p.m.
Hamline	4-4	9-6	St. Catherine at Saint Mary's 7:00 p.m.
Concordia	4-4	8-7	Saint Benedict at Macalester 7:00 p.m.
Saint Benedict	4-4	7-8	Augsburg at Hamline 7:00 p.m.
St. Olaf	4-4	7-8	
Augsburg	3-5	8-7	
Carleton	3-5	5-10	
St. Catherine	2-6	7-8	
Macalester	0-8	3-12	



2014-15 GUSTAVUS WOMEN'S BASKETBALL TEAM



2014-15 GUSTAVUS WOMEN'S BASKETBALL NUMERICAL ROSTER

No.	Name	Year	Position	Height	Hometown	High School
3	Emee Udo	First-year	Guard	5-9	Apple Valley, Minn.	Eastview
5	Kelsey Carpenter	Sophomore	Guard	5-8	St. Peter, Minn.	St. Peter
10	Mikayla Miller	First-year	Guard	5-8	Goodhue, Minn.	Goodhue
11	Emily FitzSimmons*	Senior	Guard	5-7	Good Thunder, Minn.	Maple River
12	Anne Odegard	Sophomore	Guard	5-9	St. Paul, Minn.	Cretin-Derham Hall
14	Kate Thiesse	First-year	Forward	5-10	Welcome, Minn.	Martin County West
15	Siri Sviggum	First-year	Guard	5-7	Dennison, Minn.	Kenyon-Wanamingo
20	Hannah Silva-Breen	First-year	Forward	5-10	Prior Lake, Minn.	Prior Lake
21	Morgan Iverson	Sophomore	Forward	5-9	Waconia, Minn.	Waconia
22	Julie Sohre	Junior	Forward	5-10	Good Thunder, Minn.	Maple River
23	Heather Hohenstein	Junior	Guard	5-5	Garden City, Minn.	Lake Crystal Wellcome Memorial
24	Taylor Ebnet	Sophomore	Guard	5-7	Lake Lillian, Minn.	BOLD
30	Kelle Nett	Junior	Forward	5-10	Spring Valley, Ill.	Hall
32	Hannah Howard	Sophomore	Guard	5-9	St. Paul, Minn.	Cretin-Derham Hall
33	Lindsey Johnson*	Junior	Forward	6-0	Edina, Minn.	Edina
34	Maddie Ehrich	Senior	Guard	5-9	Eden Prairie, Minn.	Lion's Gate Christian Academy
40	Anna Lundquist	Junior	Post	5-11	Rochester, Minn.	Mayo
42	Emmaline Crawford	Sophomore	Post	6-0	Mankato, Minn.	East
43	Miranda Rice	First-year	Forward	5-11	Forest Lake, Minn.	Forest Lake
44	Stephanie Klockmann	First-year	Post	5-10	Brownton, Minn.	Glencoe-Silver Lake
50	Cara Christiansen	Sophomore	Forward	5-10	North Mankato, Minn.	West

Head Coach: Laurie Kelly (Third Season)

Assistant Coaches: Dan Wolfe, Angie Potts, Nate Otto



HEAD COACH LAURIE KELLY

Third Season
39-27 at Gustavus
262-216 Overall
Office: 507-933-6145
Email: lkelly@gustavus.edu



Laurie Kelly is in her third season as the head coach of the Gustavus women's basketball team. Kelly, a 1993 graduate of the University of St. Thomas with a degree in speech communications, came to Gustavus from Northern Arizona University in Flagstaff, where she directed the Division I Lumberjacks for nine seasons.

Thanks to a late surge during which the 2013-14 Gustavus women's basketball team won seven of eight games from late-January to mid-February, the Gusties were able finish sixth in the conference standings with a record of 11-11 and earn a trip to the MIAC Playoffs for an MIAC-best 14th consecutive season. Gustavus finished the year with a record of 14-12 overall after falling on the road to No. 3-seeded St. Thomas 66-51 in the quarterfinals of the MIAC Playoffs.

Senior guard Julia Dysthe (White Bear Lake, Minn.) and sophomore post Karina Schroeder (Lake Crystal, Minn.) were both honored as members of the All-Conference Team following the season. Dysthe, a first time all-conference performer, scored a career-high 382 points (13.7 ppg) and shot 42.1-percent from the field. Schroeder, a member of the MIAC All-Rookie Team last season, established herself as one of the top post players in the league after averaging 14.2 points per game, shooting 53.3-percent from the field, and bringing down an average of 8.9 rebounds per game. She led the team in all three categories and finished with the second-best field goal shooting percentage in the league at 51.6-percent against league opponents.

A Rochester, Minnesota, native, Kelly made a quick ascent through the Division II and I coaching ranks after record setting Division III playing career at the University of St. Thomas in the early '90s. In the past nine years at Northern Arizona, she has compiled the most wins in the program's history (117), while also directing the team to its first-ever Big Sky Conference tournament title and NCAA tournament bid in the 2005-06 season. During Kelly's tenure, the Lumberjacks advanced to the Big Sky tournament six times with two appearances in the championship game (2006, 2007), and her teams have registered two of the three 20-win seasons in the program's history.

In addition to quality on the floor, her squads have also been strong in the classroom, with four players earning CoSIDA Academic All-District honors including one Academic All-American. The Lumberjacks were recognized in the Women's Basketball Coaches Association Top 25 Academic Honor Roll six times, with two Top Ten national rankings.

Following the 2012-13 season, the Gustavus women's basketball team achieved a significant milestone when the Women's Basketball Coaches Association (WBCA) announced its Academic Top 25 Team Honor Roll following the year. Making their 15th appearance on the NCAA Division III honor roll, the Gusties were recognized as the team with the top cumulative grade point average in country at a 3.600 – a first in the program's history.

Prior to her position at Northern Arizona, Kelly coached at Binghamton University in New York and built the Bearcats into one of the top Division II programs in the country before helping the institution transition to a Division I program in 2001-02. In that first year of Division I competition, Kelly directed the team to a 19-9 record and a second-place finish in the America East Conference. During her five years at Binghamton, Kelly compiled a record of 94-22, including a mark of 75-13 in the program's final three years at the Division II level, and her squads won New England Collegiate Conference (NECC) titles in 1999 and 2000 and Eastern Collegiate Athletic Conference (ECAC) titles in 2000 and 2001. She was named ECAC Coach of the Year in 2000 and New York State Coach of the Year in 2002. Kelly started her collegiate coaching career as the graduate assistant coach at Minnesota State University, Mankato from 1996 to 1998. While she was at Minnesota State, Mankato she earned a master's degree in physical education with an emphasis in sports administration.

Before her success in the coaching ranks, Laurie Trow Kelly was a standout player at the University of St. Thomas from 1989 to 1993 and is recognized by many as one of the greatest players in NCAA Division III history. A gifted athlete, the 6-1 Kelly scored 2,607 points and pulled down 1,204 rebounds in four years, earning Kodak All-America honors three consecutive seasons. In her senior season (1992-93), Kelly was voted National Player of the Year by the Women's Basketball Coaches Association after averaging more than 26 points per game. She set 22 conference and 24 school records, was conference MVP three times and was also named Midwest Sports Channel NCAA Division III Women's Athlete of the Year. In January of 2006, Kelly was one of five players selected to the NCAA Division III 25th Anniversary Team.

Laurie Kelly is the ninth head coach in the history of the Gustavus women's basketball program. Heading into the 2014-15 season, the Gusties have compiled an all-time record of 632-434 (.593), winning two Minnesota Intercollegiate Athletic Conference championships and making five NCAA tournament appearances.

In addition to her coaching duties, Kelly serves as the coordinator of the Gustavus Health Promotion program (GHP). The Gustavus Health Promotion program offers employees at Gustavus a variety of educational opportunities, assessment tools, and physical activity experiences so that they can achieve and maintain a healthy lifestyle.

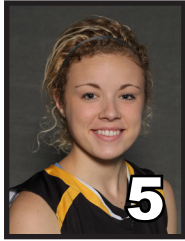
Kelly lives in St. Peter with and her husband, Matt, and their two daughters, Morgan and Madison .



2014-15 TV/RADIO ROSTER



3
EMME EDO
Guard - First-year
Apple Valley, Minn.



5
KELSEY CARPENTER
Guard - First-year
St. Peter, Minn.



10
MIKAYLA MILLER
Guard - First-year
Goodue, Minn.



11
EMILY FITZSIMMONS
Guard - Senior
Good Thunder, Minn.



12
ANNE ODEGARD
Guard - Sophomore
St. Paul, Minn.



14
KATE THIESSE
Forward - First-year
Welcome, Minn.



15
SIRI SVIGGUM
Guard - First-year
Dennison, Minn.



20
HANNAH SILVA-BREEN
Forward - First-year
Prior Lake, Minn.



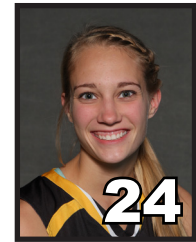
21
MORGAN IVERSON
Forward - Sophomore
Waconia, Minn.



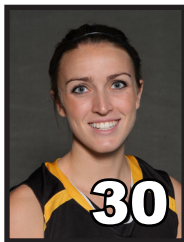
22
JULIE SOHRE
Forward - Junior
Good Thunder, Minn.



23
HEATHER HOHENSTEIN
Guard - Junior
Garden City, Minn.



24
TAYLOR EBNET
Guard - Sophomore
Lake Lillian, Minn.



30
KELLE NETT
Forward - Junior
Spring Valley, Ill.



32
HANNAH HOWARD
Guard - Sophomore
St. Paul, Minn.



33
LINDSEY JOHNSON
Forward - Junior
Edina, Minn.



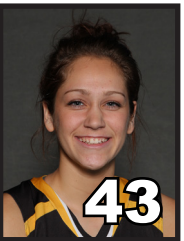
34
MADDIE EHRIK
Guard - Senior
Eden Prairie, Minn.



40
ANNA LUNDQUIST
Post - Junior
Rochester, Minn.



42
EMMALINE CRAWFORD
Post - Sophomore
Mankato, Minn.



43
MIRANDA RICE
Forward - First-year
Forest Lake, Minn.



44
STEPHANIE KLOCKMANN
Post - First-year
Browntown, Minn.



50
CARA CHRISTIANSEN
Post - Sophomore
North Mankato, Minn.



LAURIE KELLY
Head Coach



DAN WOLFE
Assistant Coach



2014-15 GUSTAVUS ADOLPHUS WOMEN'S BASKETBALL GAME NOTES

GUSTAVUS VS. BETHEL | WEDNESDAY, JANUARY 21

2014-15 COMBINED SEASON STATISTICS

RECORD:	OVERALL	HOME	AWAY	NEUTRAL
ALL GAMES	12-3	6-0	5-2	1-1
CONFERENCE	6-2	3-0	3-2	0-0
NON-CONFERENCE	6-1	3-0	2-0	1-1

#	Player	gp-gs	min	avg	Total		3-Point		F-Throw		Rebounds				pf	dq	a	to	blk	stl	pts	avg
					fg-fga	pct	3fg-fga	pct	ft-fa	pct	off	def	tot	avg								
10	Mikayla Miller	15-15	491	32.7	91-238	.382	18-68	.265	69-89	.775	24	76	100	6.7	35	0	55	69	1	47	269	17.9
33	Lindsey Johnson	15-15	391	26.1	53-106	.500	10-22	.455	21-21	1.000	12	61	73	4.9	35	1	33	26	3	10	137	9.1
32	Hannah Howard	15-14	355	23.7	44-92	.478	0-3	.000	35-49	.714	26	39	65	4.3	44	2	24	28	5	26	123	8.2
43	Miranda Rice	15-15	364	24.3	47-101	.465	0-0	.000	24-36	.667	29	44	73	4.9	40	0	16	31	2	23	118	7.9
34	Maddie Ehrich	15-14	392	26.1	40-90	.444	1-5	.200	32-43	.744	12	33	45	3.0	37	0	31	23	2	15	113	7.5
05	Kelsey Carpenter	15-2	328	21.9	35-85	.412	19-45	.422	13-17	.765	2	16	18	1.2	28	0	15	23	1	9	102	6.8
44	Stephanie Klockmann	12-0	130	10.8	16-25	.640	0-0	.000	7-12	.583	16	14	30	2.5	23	0	6	6	1	8	39	3.3
12	Anne Odegard	3-0	11	3.7	3-6	.500	0-3	.000	3-3	1.000	0	0	0	0.0	1	0	0	2	0	0	9	3.0
15	Siri Sviggum	15-0	189	12.6	11-25	.440	5-16	.313	13-16	.813	11	15	26	1.7	10	0	8	8	1	6	40	2.7
42	Emmaline Crawford	7-0	58	8.3	5-12	.417	0-0	.000	8-13	.615	6	9	15	2.1	10	1	2	5	2	3	18	2.6
40	Anna Lundquist	10-0	57	5.7	4-15	.267	0-0	.000	11-13	.846	8	13	21	2.1	9	0	1	5	1	2	19	1.9
22	Julie Sohre	3-0	17	5.7	2-2	1.000	0-0	.000	1-2	.500	0	4	4	1.3	2	0	1	2	0	1	5	1.7
24	Taylor Ebnet	3-0	7	2.3	1-2	.500	0-0	.000	2-2	1.000	3	1	4	1.3	1	0	1	3	0	0	4	1.3
50	Cara Christiansen	7-0	43	6.1	3-5	.600	0-0	.000	3-4	.750	4	6	10	1.4	6	0	1	5	0	0	9	1.3
21	Morgan Iverson	4-0	48	12.0	1-4	.250	1-1	1.000	2-2	1.000	0	3	3	0.8	5	0	1	5	1	0	5	1.3
11	Emily FitzSimmons	3-0	16	5.3	1-2	.500	1-1	1.000	0-0	.000	0	2	2	0.7	2	0	1	3	0	1	3	1.0
03	Emee Udo	12-0	80	6.7	4-11	.364	0-0	.000	2-3	.667	3	11	14	1.2	4	0	4	6	1	2	10	0.8
30	Kelle Nett	4-0	7	1.8	0-1	.000	0-0	.000	2-2	1.000	1	2	3	0.8	0	0	2	0	0	0	2	0.5
23	Heather Hohenstein	6-0	38	6.3	1-3	.333	0-0	.000	0-0	.000	0	1	1	0.2	4	0	4	7	0	1	2	0.3
20	Hannah Silva-Breen	1-0	2	2.0	0-0	.000	0-0	.000	0-0	.000	0	0	0	0.0	0	0	0	0	0	0	0	0.0
Total.....		15	3024		362-823	.440	55-164	.335	248-327	.758	186	384	570	38.0	296	4	206	277	21	154	1027	68.5
Opponents.....		15	3029		313-781	.401	92-263	.350	181-300	.603	159	317	476	31.7	275	-	177	298	40	130	899	59.9

TEAM STATISTICS	GAC	OPP
SCORING	1027	899
Points per game	68.5	59.9
Scoring margin	+8.5	-
FIELD GOALS-ATT	362-823	313-781
Field goal pct	.440	.401
3 POINT FG-ATT	55-164	92-263
3-point FG pct	.335	.350
3-pt FG made per game	3.7	6.1
FREE THROWS-ATT	248-327	181-300
Free throw pct	.758	.603
F-Throws made per game	16.5	12.1
REBOUNDS	570	476
Rebounds per game	38.0	31.7
Rebounding margin	+6.3	-
ASSISTS	206	177
Assists per game	13.7	11.8
TURNOVERS	277	298
Turnovers per game	18.5	19.9
Turnover margin	+1.4	-
Assist/turnover ratio	0.7	0.6
STEALS	154	130
Steals per game	10.3	8.7
BLOCKS	21	40
Blocks per game	1.4	2.7
ATTENDANCE	1089	1720
Home games-Avg/Game	6-182	7-184
Neutral site-Avg/Game	-	2-215

Date	Opponent	Score	Att.
11-15-14	CROWN COLLEGE	w 31-81	182
11-16-14	MARTIN LUTHER	w 58-74	72
11-22-14	MINNESOTA MORRIS	w 67-82	220
11/29/14	vs Dubuque	L 76-78	347
11/30/14	vs St. Scholastica	w 58-71	83
* 12/3/14	at St. Thomas	L 43-76	200
* 12/6/14	ST. CATHERINE	w 50-61	213
* 12/13/14	HAMLIN UNIVERSITY	w 68-70	84
12/20/14	at Northwestern (Minn.)	w 71-62	347
12/30/14	at UW-River Falls	wot 65-57	204
* 1/3/2015	at St. Olaf	w 64-62	0
* 01/07/15	at Augsburg College	w 83-49	101
* 1/10/15	at Saint Mary's	L 67-74	230
* 1/14/15	CONCORDIA COLLEGE	w 57-64	318
* 01/17/15	at Saint Benedict	w 55-52	208

* - Conference game



2014-15 GUSTAVUS ADOLPHUS WOMEN'S BASKETBALL GAME NOTES

GUSTAVUS VS. BETHEL | WEDNESDAY, JANUARY 21

2014-15 GAME-BY-GAME STATISTICAL COMPARISON

Opponent	1st	2nd	Score	Mar	Total FG	FG Pct	3-Pointers	3FG Pct	Free Throws	FT Pct	Rebounds	Assist	T/Over	Block	Steal	Fouls
CROWN COLLEGE	43/17	38/14	81-31	+50	26-60/10-44	.433/.227	8-20/2-9	.400/.222	21-28/9-20	.750/.450	44/34 +10	15/5	21/34	2/0	14/10	26/20
MARTIN LUTHER	38/24	36/34	74-58	+16	28-63/19-53	.444/.358	0-4/4-13	.000/.308	18-20/16-24	.900/.667	43/31 +12	17/9	21/24	2/3	14/11	20/18
MINNESOTA MORRIS	42/28	40/39	82-67	+15	28-53/22-53	.528/.415	5-11/9-18	.455/.500	21-25/14-23	.840/.609	38/28 +10	18/11	17/20	1/2	12/2	21/18
Dubuque	34/36	42/42	76-78	(2)	28-53/25-55	.528/.455	6-14/10-18	.429/.556	14-23/18-26	.609/.692	36/26 +10	19/13	22/14	1/0	8/11	24/17
St. Scholastica	31/21	40/37	71-58	+13	25-52/20-56	.481/.357	5-14/5-16	.357/.313	16-20/13-15	.800/.867	42/24 +18	12/7	20/15	2/1	8/9	16/14
St. Thomas	27/39	16/37	43-76	(33)	14-40/27-51	.350/.529	4-10/7-19	.400/.368	11-14/15-19	.786/.789	24/31 (7)	12/17	24/15	1/7	7/11	20/19
ST. CATHERINE	32/27	29/23	61-50	+11	20-44/16-55	.455/.291	3-14/4-17	.214/.235	18-24/14-22	.750/.636	42/31 +11	11/9	20/12	0/2	9/12	17/22
HAMLIN UNIVERSITY	41/23	29/45	70-68	+2	24-58/29-55	.414/.527	4-12/9-23	.333/.391	18-23/1-6	.783/.167	31/37 (6)	10/13	12/22	0/4	10/2	13/19
Northwestern (Minn.)	30/32	41/30	71-62	+9	22-66/25-56	.333/.446	5-10/6-26	.500/.231	22-29/6-13	.759/.462	39/44 (5)	10/12	14/26	0/5	13/6	15/24
UW-River Falls	28/33	23/18	65-57	+8	24-48/21-53	.500/.396	3-6/4-13	.500/.308	14-25/11-27	.560/.407	29/42 (13)	9/13	23/30	2/0	18/16	24/19
St. Olaf	26/34	38/28	64-62	+2	20-54/21-50	.370/.420	6-20/9-22	.300/.409	18-25/11-19	.720/.579	38/34 +4	10/14	13/17	2/0	8/6	17/21
Augsburg College	43/20	40/29	83-49	+34	34-61/18-52	.557/.346	1-7/3-19	.143/.158	14-21/10-14	.667/.714	44/24 +20	26/13	17/21	1/6	13/13	18/17
Saint Mary's	33/40	34/34	67-74	(7)	26-64/26-50	.406/.520	1-11/7-15	.091/.467	14-16/15-31	.875/.484	43/30 +13	12/17	18/15	1/1	6/6	27/14
CONCORDIA COLLEGE	33/29	31/28	64-57	+7	23-55/16-43	.418/.372	1-6/7-19	.167/.368	17-18/18-23	.944/.783	38/26 +12	10/11	18/19	3/3	10/7	21/19
Saint Benedict	26/26	29/26	55-52	+3	20-52/18-55	.385/.327	3-5/6-16	.600/.375	12-16/10-18	.750/.556	39/34 +5	15/13	17/14	3/6	4/8	17/14

Note: Game totals are displayed in the format TEAM/OPPONENT for each category