

# GUSTAVUS ADOLPHUS COLLEGE

## 2014-15 MEN'S HOCKEY GAME NOTES

### 2014-15 GUSTAVUS SCHEDULE

DATE	OPPONENT	TIME/RESULT
10/31	Bethel University#	L 2-4
11/2	St. Olaf College#	W 6-3
11/7	<b>UW-STEVENS POINT</b>	<b>L 1-4</b>
11/8	<b>UW-STOUT</b>	<b>W 4-3</b>
11/14	Concordia College*	W 2-1
11/15	Concordia College*	T 3-3 (SL)
11/21	Hamline University*	T 3-3 (SW)
11/22	<b>HAMLIN UNIVERSITY*</b>	<b>T 2-2 (SW)</b>
11/29	<b>LAWRENCE UNIVERSITY</b>	<b>T 3-3</b>
11/30	<b>MARIAN UNIVERSITY</b>	<b>L 1-2</b>
12/5	<b>ST. OLAF COLLEGE*</b>	<b>T 3-3 (SL)</b>
12/6	St. Olaf College*	L 2-4
1/2	<b>WILLIAMS COLLEGE</b>	<b>L 2-3</b>
1/9	<b>FINLANDIA UNIVERSITY</b>	<b>W 4-2</b>
1/10	<b>COLLEGE OF ST. SCHOLASTICA</b>	<b>T 0-0</b>
1/16	Augsburg College*	L 3-5
1/17	<b>AUGSBURG COLLEGE*</b>	<b>W 3-0</b>
1/23	Saint Mary's University*	7:00 p.m.
1/24	<b>SAINT MARY'S UNIVERSITY*</b>	<b>7:05 p.m.</b>
1/30	Saint John's University*	7:00 p.m.
2/31	<b>SAINT JOHN'S UNIVERSITY*</b>	<b>7:05 p.m.</b>
2/13	<b>UNIVERSITY OF ST. THOMAS*</b>	<b>7:05 p.m.</b>
2/14	University of St. Thomas*	7:00 p.m.
2/20	Bethel University*	7:00 p.m.
2/21	<b>BETHEL UNIVERSITY*</b>	<b>7:05 p.m.</b>

*HOME GAMES in BOLD FACE CAPS; all times Central*

*\* MIAC game*

*# MIAC Showcase (Blaine, Minn.)*

### GUSTAVUS QUICK FACTS

<b>Location:</b>	St. Peter, Minnesota
<b>Address:</b>	800 West College Ave. St. Peter, MN 56082
<b>Founded:</b>	1862
<b>Enrollment:</b>	2,500
<b>Nickname:</b>	Golden Gusties
<b>School Colors:</b>	Black and Gold
<b>Home Arena:</b>	Don Roberts Ice Rink
<b>Conference:</b>	Minnesota Intercollegiate Athletic
<b>NCAA Affiliation:</b>	NCAA Division III
<b>President:</b>	Rebecca M. Bergman
<b>Athletic Director:</b>	Tom Brown
<b>Assistant Athletic Director:</b>	Jared Phillips
<b>Athletic Trainer:</b>	Troy Banse
<b>Equipment Manager:</b>	Wayne Norman
<b>Sports Information Director:</b>	Ethan Armstrong
<b>Sports Information Graduate Assistant:</b>	Nick Hoelmer

#### GUSTAVUS ADOLPHUS COLLEGE

"Golden Gusties"

5-6-6 Overall, 2-2-4 MIAC

#### SAINT MARY'S UNIVERSITY

"Cardinals"

7-6-2 Overall, 2-2-2 MIAC

#### GAME 18

WINONA, MINN.

#### GAME INFORMATION

**DATE:** Friday, January 23

**TIME:** 7:00 p.m.

**SITE:** Winona, Minnesota

**ARENA:** SMU Ice Arena

**WEB VIDEO:** <http://portal.stretchinternet.com/smu/>

**LIVE STATS:** <http://portal.stretchinternet.com/smu/>

#### GAME 19

ST. PETER, MINN.

#### GAME INFORMATION

**DATE:** Saturday, January 24

**TIME:** 7:05 p.m.

**SITE:** St. Peter, Minnesota

**ARENA:** Don Roberts Ice Rink

**WEB VIDEO:** <http://portal.stretchinternet.com/gac>

**LIVE STATS:** <https://gustavus.edu/athletics/hky/LIVE/xlive.htm>

#### SETTING THE SCENE

The Gustavus Adolphus men's hockey team is back in action this weekend with a home-and-home series against Minnesota Intercollegiate Athletic Conference opponent Saint Mary's University.

The weekend will begin with a 7:00 p.m. game at the SMU Ice Arena in Winona on Friday, Jan. 23. The series will then conclude at Don Roberts Ice Rink on Saturday, Jan. 24 with a 7:05 p.m. puck drop.

Gustavus heads into the weekend sitting in a three-way tie for fourth in the MIAC standings alongside St. Thomas and Augsburg with 12 points. The Gusties are 5-6-6 overall and 2-2-4 in the MIAC after splitting with the Auggies in their last weekend. Saint Mary's is alone in seventh place with 10 points at 7-8-0 overall and 2-2-2 in the MIAC. The Cardinals are currently on a roll riding a four-game winning-streak, which includes a sweep of Bethel last weekend.

#### TICKET INFORMATION

Tickets for Gustavus athletic events are available for purchase prior to each home event one hour prior to the scheduled game time. Men's hockey general admission tickets are \$5 for adults, \$4 for visiting college students with ID, \$2 for ages 12-18, and free for ages 12 and under 62 and over.



**TWITTER**  
[@GustieAthletics](https://twitter.com/GustieAthletics)



**FACEBOOK**  
[facebook.com/GustieAthletics](https://facebook.com/GustieAthletics)



**GAME CENTRAL**  
[client.stretchinternet.com/client/gac.portal](http://client.stretchinternet.com/client/gac.portal)



**YOUTUBE**  
[youtube.com/gustavusathletics](https://youtube.com/gustavusathletics)



**INSTAGRAM**  
[instagram.com/gustieathletics](https://instagram.com/gustieathletics)



**FLICKR**  
[flickr.com/photos/gogusties](https://flickr.com/photos/gogusties)

#### MEN'S HOCKEY MEDIA CONTACT

**Sports Information Director:** Ethan Armstrong

**Email:** [earmstr2@gac.edu](mailto:earmstr2@gac.edu) • **Cell:** 320-815-2351 • **Office:** 507-933-7647

14-TIME MIAC CHAMPION



# 2014-15 GUSTAVUS ADOLPHUS MEN'S HOCKEY GAME NOTES

## STATISTICAL COMPARISON

<b>Gustavus</b>		<b>Saint Mary's</b>
2.59 (7th)	<b>Goals For</b>	3.60 (1st)
2.65 (4th)	<b>Goals Against</b>	2.87 (5th)
9/51-17.6% (6th)	<b>Power Play</b>	15/61-24.6% (1st)
48/52-92.3% (1st)	<b>Penalty Kill</b>	47/57-82.5% (6th)
+2 (T-4th)	<b>Special Teams Net</b>	+7 (1st)
10.0 (8th)	<b>Penalty Minutes</b>	11.8 (3rd)

- 2014-15 overall per game averages with MIAC rank

## THE SERIES

### VS. SAINT MARY'S

<b>All-Time</b>	75-35-7
<b>Last Meeting</b>	W 5-1 (1/25/14)
<b>Current Streak</b>	W - 5

#### Head Coach Brett Petersen

Overall Record at Gustavus	203-154-38
vs. Saint Mary's	20-6-3

#### Head Coach Bill Moore

Record at Saint Mary's	56-124-11
vs. Gustavus	2-12-1

#### Last 10 Meetings 8-1-1

Date	Location	Result
1/25/14	SMU Ice Arena	W 5-1
1/24/14	Don Roberts Ice Rink	W 4-1
2/9/13	Don Roberts Ice Rink	W 5-2
2/8/13	SMU Ice Arena	W 4-1
2/11/12	SMU Ice Arena	W 4-1
2/10/12	Don Roberts Ice Rink	T 4-4
2/19/11	Don Roberts Ice Rink	W 5-4 OT
2/18/11	SMU Ice Arena	L 3-4
10/31/10	Fogerty Ice Arena	W 2-1
2/20/10	SMU Ice Arena	W 6-0

## CAREER SCORING VS. SAINT MARY'S

Player	Games	Goals	Assists	Points
Andy Pearson	6	0	6	6
Tyler Lopic	4	0	5	5
Jack Walsh	6	4	0	4
Darren Lopic	4	1	1	2
Blake Schammel	6	0	2	2
Drew Aspinwall	2	0	2	2
Gavin Tufte	2	2	0	2
Nate Paulsen	6	0	1	1
Sam Majka	2	0	1	1
Cory Ellis	2	0	1	1
Joncarlo Westerlund	2	1	0	1
Sam Smith	3	0	0	0
Schylar Adams	2	0	0	0
Jared Docken	2	0	0	0

Goaltending	Record	Min.	GA	Saves
John McLean	2-0-1	185:00	6	71

## GAME NOTES

### LIVE COVERAGE

Live video and live stats for Friday and Saturday night's games will be provided through the links below. The Saint Mary's Sports Information Department will produce the live coverage for Friday night's game at the SMU Ice Arena.

### Live Video/Stats

<http://portal.stretchinternet.com/smu/>

Ethan Armstrong will be in Don Roberts Ice Rink for the live call of Saturday night's game. New this season, Gustavus will provide a high definition video stream of all home games for viewing on your computer, tablet, or smart phone through GameCentral by Stretch Internet.

### Live Video

<http://portal.stretchinternet.com/gac/>

### Live Stats

<https://gustavus.edu/athletics/hky/LIVE/xlive.htm>

### GUSTAVUS EMBARKS ON 73RD SEASON OF MEN'S HOCKEY

The Gustavus men's hockey team is in its 73rd season of existence. One of the storied programs in collegiate hockey, Gustavus has compiled an all-time record of 854-624-74 overall and 565-427-45 in the MIAC. The Gusties have won 14 MIAC Championships and earned a place in the NCAA Division III Tournament six times, which includes a runner-up finish in 2009.

Gustavus first recognized a men's hockey team in 1937 when then Director of Physical Education George Myrum became interested in the sport and raised the funds to sponsor a team. The Gusties fell to Carleton in their first ever intercollegiate game in 1936. It would take until 1939, the first year Gustavus played on natural ice in the on-campus fieldhouse, for Gustavus to record the first victory in the program's history.

### GUSTAVUS COACHING STAFF

Head Coach Brett Petersen is in his 15th season at the helm of the Gustavus men's hockey program. Petersen has compiled a 203-154-38 overall record in his 14-plus seasons at Gustavus. His win total at Gustavus ranks second behind legendary coach Don Roberts. He has been named MIAC Coach of the Year twice in his tenure, once in 2001-02 and again in 2009-10.

Within MIAC play, Gustavus holds a record 126-81-25 during the Petersen era. The Gusties have earned a trip to the MIAC Playoffs 13 straight seasons and have advanced to the MIAC Playoff Championship a total of six times under Petersen. Since the turn of the century, Gustavus has qualified for the NCAA Division III Tournament three times in 2009, 2010, and 2012. The Gusties advanced all the way to the NCAA Championship in 2009 where they fell to Neumann 4-1 at Herb Brooks Arena in Lake Placid, N.Y.

Petersen, a Roseville, Minn. native, received his Bachelor of Science degree in business administration from the University of Denver in 1992 and his Master of Science degree in athletic administration in 2000 from St. Cloud State.

Former men's hockey standout David Martinson is in his third season as the assistant men's hockey coach at Gustavus. A 2010 graduate and one of the most decorated hockey players to don a three crowned sweater, Martinson is a native of St. Louis Park, Minn. After being named the MIAC Player of the Year and earning All-America honors twice during his playing career, Martinson continued his education at the Bowling Green State University where he served as a graduate assistant for the men's hockey team. In the fall of 2012, David received his masters of education in sport administration.

### SAINT MARY'S COACHING STAFF

Bill Moore is in his eighth season at the helm of the Saint Mary's men's hockey team. A 1985 graduate of Saint Mary's, where he earned a degree in secondary education (social studies) and was both a standout soccer and hockey player, Moore has coached at both the collegiate and high school levels. He spent three seasons at Saint Mary's from 1987-1990, while also serving as the head coach at Tartan, South St. Paul and Woodbury High Schools.

Moore is assisted by Ryan Egan (UW-River Falls '03), J Reszka (Saint Mary's '01), and Alex North (Saint Mary's '11).

### AROUND THE GLOBE

Gustavus's 2014-15 roster features 28 players from six different states and one player from Canada. Within the United States, Minnesota (22), Alaska (1), California (1), North Dakota (1), Oklahoma (1), and Vermont (1) are represented by 27 players. Outside the U.S., the Canadian province of British Columbia is home to Sam Smith.



## 2014-15 GUSTAVUS ADOLPHUS MEN'S HOCKEY GAME NOTES

### GUSTAVUS HOCKEY FACTS

<b>2013-14 Record:</b>	16-7-4
<b>2013-14 MIAC Record/Finish:</b>	12-3-1/Second
<b>All-Time Record:</b>	854-624-74
<b>All-Time MIAC Record:</b>	565-427-45
<b>MIAC Championships :</b>	14
<b>Lettermen Returning/Lost:</b>	19/8
<b>All-MIAC Honorees Returning/Lost:</b>	3/1

### GUSTAVUS' RECORD WHEN...

At home	3-3-4
On the road	1-2-2
Neutral Site	1-1-0
GAC scores 4 or more goals	3-0-0
GAC scores 3 goals	1-1-4
GAC scores 2 or fewer goals	1-5-2
GAC scores first	4-1-2
Opponent scores first	1-5-3
GAC leads after 1st period	2-2-1
Opponent leads after 1st period	1-3-1
Tied after 1st period	1-2-4
GAC leads after 2nd period	4-0-1
Opponent leads after 2nd period	0-4-2
Tied after 2nd period	1-2-3
Games decided by one goal	2-2
Games decided by two goals	1-3
Games decided by three goals	2-1
Games decided by four or more	0-0
GAC scores on the power play	2-3-3
GAC scoreless on the power play	2-3-2
GAC scores two or more PP goals	0-1-0
GAC outshoots opponent	3-4-4
GAC outshot by opponent	2-2-2
Shots equal	0-0-0
Friday	2-4-2
Saturday	2-1-4
Sunday	1-1-0
In October	0-1-0
In November	3-2-3
In December	0-1-1
In January	2-2-1
In February	0-0-0
In March	0-0-0
Following a win	1-1-2
Following a loss	3-2-1
Following a tie	0-3-3

### GAME NOTES

#### PRIOR EXPERIENCE

All 28 players on Gustavus's roster previously played junior hockey before beginning their collegiate careers. Thirteen of this year's Gusties are alums of the North American Hockey League (NAHL), while four played in the Superior International Junior Hockey League (SIJHL). The Eastern Junior Hockey League (EJHL), North American Tier III Hockey League (NA3HL), and Western States Hockey League (WSHL) are each represented by two players. The United States Hockey League (USHL), British Columbia Hockey League (BCHL), Central Canada Hockey League (CCHL), American West Hockey League (AWH L), and Minnesota Junior Hockey League (MNJHL) were all home to one future Gustie.

#### CAPTAIN'S LOG: 2014-15

The 2014-15 Gustavus men's hockey team is led by senior captains Jack Walsh (Mahtomedi, Minn.) and Tyler Lopic (New Prague, Minn.). In the 72-year history of Gustavus men's hockey, Walsh and Lopic are the 87th and 88th student-athletes to earn the right of wearing a "C" on their Gustavus sweater. Jack Walsh is the program's first two-time captain since Ross Ring-Jarvi '12 served during the 2010-11 and 2011-12 seasons.

#### SENIOR LEADERSHIP

Eight student-athletes are in their fourth and final season on the Gustavus men's hockey team. Sam Smith (Vancouver, B.C.), Jack Walsh, Tyler Lopic, Schyler Adams (New Prague, Minn.), Nate Paulsen (La Habra, Calif.), Andy Pearson (Burnsville, Minn.), Cory Ellis (St. Paul, Minn.), and Blake Schammel (Red Wing, Minn.) make up this year's Golden Gustie seniors. All eight have been significant contributors to the program since coming to campus in the fall of 2011.

#### LETTERWINNERS AND FRESH FACES

Brett Petersen returned 20 letterwinners from a 2013-14 squad that went 16-7-4 overall (12-3-1 MIAC) and advanced to the MIAC Playoff Championship for the third consecutive season. To go along with his 20 returners, coach Petersen welcomes eight new players to the team. Five of the eight fresh faces are frosh while the other three spent last season on Gustavus's junior varsity team. This season's rookies include Jake McCann (Shoreview, Minn.), Jake Bushey (Duluth, Minn.), Conor Deal (Anchorage, Alaska), Tim Donohue (Bloomington, Minn.), and Isaak Tjaden (Eagan, Minn.). Sophomores Cameron Jackson (Lakeville, Minn.), Matt Petersen (Center City, Minn.), and Mason Wyman (Burnsville, Minn.) moved up to varsity after a season on JV. McCann, Deal, Donohue, and Wyman are forwards, Bushey, Jackson, and Petersen are defenseman, and Tjaden is a goaltender.

#### THE LONG AND WINDING ROAD

To go along with the team's standard 16 Minnesota Intercollegiate Athletic Conference contests, this season's long and winding schedule features non-conference games against teams belonging to the MIAC, WIAC, NCHA, and NESCAC. In addition to non-league games against conference foes Bethel and St. Olaf this weekend at the MIAC Showcase, Gustavus will face UW-Stevens Point (Nov. 7) and UW-Stout (Nov. 8) of the WIAC, Lawrence (Nov. 29), Marian (Nov. 30), Finlandia (Jan. 9), and St. Scholastica (Jan. 10) of the NCHA, and Williams (Jan. 2) of the NESCAC. The Gusties will play 13 of its games at home at Don Roberts Ice Rink including non-conference bouts against Lawrence and Marian in the MIAC/NCHA Thanksgiving Showdown Nov. 29 and Nov. 30.

#### THE SERIES

This weekend's games will be the 118th and 119th meetings between Gustavus and Saint Mary's in men's hockey. The Gusties hold the advantage in the all-time series with a record of 75-35-7. In last season's series, the Gusties scored nine total goals on their way to a second consecutive MIAC sweep. The Black and Gold won 4-1 on Friday night in St. Peter and then completed the six point weekend with a 5-1 win on Saturday night in Winona. Gustavus is riding a seven-game unbeaten-streak during which it is 6-0-1 against the Cardinals. Saint Mary's last win in the matchup came on Feb. 18, 2011 when it took the series-opener 4-3 at the SMU Ice Arena thanks to a four-goal second period.

#### ABOUT LAST WEEKEND

After suffering a 5-3 loss to begin the weekend last Friday at Augsburg, Gustavus was able to bounce back with a 3-0 win and salvage a split on Saturday in St. Peter.

A two-goal first period for the Auggies turned out to be the difference in Friday night's game because despite cutting the lead to one goal on three occasions, the Gusties could not make up the difference while in catchup mode for the remainder of the game. Gustavus got goals from Conor Deal, Jake Bushey, and Blake Schammel. Bushey's and Schammel's came on the power play, as Gustavus outshot the Auggies 33-31. John McLean suffered the loss after allowing four goals and making 26 saves.

After a scoreless first period on Saturday evening, Gustavus went to work in the second and got a pair of goals within one minute time-frame. Darren Lopic kicked off the scoring at the 16:03 mark, and Tyler Lopic followed suit with a goal at 16:53. The Gusties put an exclamation point on the win at the 19:26 mark of the third period with an empty-netter by Conor Deal. John McLean earned his second shutout of the season by making 26-of-26 stops, and the Gusties outshot the Auggies 32-to-26.





## 2014-15 GUSTAVUS ADOLPHUS MEN'S HOCKEY GAME NOTES

### 2014-15 MIAC STANDINGS

SCHOOL	POINTS	MIAC	OVERALL
Concordia	15	4-2-2	9-5-3
Saint John's	13	4-3-1	7-5-4
Hamline	13	3-0-3	7-4-4
St. Thomas	12	3-1-2	9-3-3
<b>Gustavus</b>	<b>12</b>	<b>2-2-4</b>	<b>5-6-6</b>
Augsburg	12	4-2-0	7-8-0
Saint Mary's	10	2-2-2	7-6-2
St. Olaf	8	2-5-1	4-11-2
Bethel	1	0-7-1	2-12-2

### AROUND THE MIAC

#### Friday, Jan. 23

St. Thomas at Hamline | 7:00 p.m.  
Gustavus at Saint Mary's | 7:00 p.m.  
Concordia at Augsburg | 7:05 p.m.  
Bethel at St. Olaf | 7:30 p.m.

#### Saturday, Jan. 24

Concordia at Augsburg | 2:30 p.m.  
St. Olaf at Bethel | 7:00 p.m.  
Hamline at St. Thomas | 7:00 p.m.  
Saint Mary's at Gustavus | 7:05 p.m.

### USCHO.COM DIII MEN'S POLL

No.	Team	Record	Points	Last Poll
1	St. Norbert (20)	13-1-2	300	1
2	Norwich	14-2-1	269	2
3	Wisconsin-River Falls	14-2-1	251	4
4	Oswego	10-2-3	226	5
5	Trinity	12-1-1	193	9
6	Wisconsin-Stevens Point	12-4-0	190	7
7	Babson	13-2-2	189	6
8	Adrian	12-2-3	180	8
9	Plattsburgh	12-4-1	159	3
10	Massachusetts-Boston	14-2-1	104	11
11	Williams	9-3-2	95	13
12	Amherst	10-3-2	86	10
13	St. Thomas	9-3-3	55	NR
14	Wisconsin-Eau Claire	9-4-2	39	12
15	Hobart	11-5-0	17	NR
15	Lake Forest	9-3-5	17	NR

### D3HOCKEY.COM DIII TOP 15 POLL

No.	Team	Record	Points	Last Poll
1	St. Norbert (20)	13-1-2	300	1
2	Norwich	14-2-1	255	2
3	UW-River Falls	14-2-1	232	6
4	Oswego State	10-2-3	228	4
5	Trinity (Conn.)	12-1-1	217	8
6	UW-Stevens Point	12-4	207	5
7	Adrian	12-2-3	189	9
8	Babson	13-2-2	173	6
9	Plattsburgh State	12-4-1	152	3
10	Mass-Boston	14-2-1	99	12
11	Amherst	10-3-2	80	11
12	St. Thomas	9-3-3	73	14
13	UW-Eau Claire	9-4-2	65	10
14	Williams	9-3-2	55	15
15	Lake Forest	9-3-5	23	NR

### GAME NOTES

#### SCOUTING THE CARDINALS

Saint Mary's heads into the weekend playing the best hockey of its 2014-15 campaign. The Cardinals have won their last four games and are averaging an even five goals per game within that time. Most recently, Saint Mary's earned its first MIAC sweep of the year with back-to-back 5-2 victories over Bethel.

Thanks to their recent offensive explosion, the Cardinals are the top scoring team in the MIAC with a 3.6 goals per game average. Defensively, Saint Mary's is allowing 2.87 goals per game (5th/MIAC) and is killing penalties at an 82.5-percent rate (6th/MIAC). The Cardinals have also proven deadly on the power play, converting at 24.6-percent, which leads the league and ranks 16th in the country.

Leading Saint Mary's scoring charge is sophomore forward Martin Gruse, who heads into the Gustavus series one of the hottest scorers in the country. With a league-leading 24 points off 14 goals and 10 assists, Gruse ranks fifth in NCAA Division III in points and third in goals. Gruse scored four goals in the team's sweep-clinching 5-2 win over Bethel. His four-goal effort was the Cardinals' most since Mike Glaesmer netted four against Hamline on Dec. 6, 2008 (note courtesy of SMU sports information).

Doing the majority of goaltending this season is sophomore Phil Heinle who is 5-5-2 in 727:43 minutes. He holds a save percentage of .919 (4th/MIAC) and a goals against average of 2.56 (5th/MIAC). Against Bethel last weekend, Heinle picked up both wins after turning away 54-of-58 shots.

#### SHUTOUTS

After allowing a season-high four goals in Friday's loss to Augsburg, John McLean rebounded with a 26-save shutout on Saturday. Not only was it McLean's second of the season, but it was also the first time in the junior's career that he has posted a shutout on consecutive weekends. McLean is the first Gustavus goalie to record shutouts on back-to-back weekends since Tyler Venne earned a 2-0 win on Saturday, Feb. 16 against St. Olaf and a 1-0 win one week later on Feb. 23 against St. Thomas.

#### SNIPER ALERT

Despite having recorded a league-low 406 shots for an average of 27.1 shots per game, Saint Mary's has scored the most goals with 54 and boast the MIAC's top shooting percentage at 13.3-percent. Gustavus ranks second in the league with 556 shots for an average of 32.7 shots per game and a shooting percentage of 7.9-percent. The Gusties have been outshot only once (39-34 vs. St. Scholastica) in January and are limiting teams to 28.2 shots per game. Opponents of the Cardinals are averaging 31 shots. No player on Gustavus's team holds a shot percentage greater than .200, while Saint Mary's Martin Gruse and Jed McGlasson carry shooting clips of .241 and .237, respectively.

#### KILL OR BE KILLED

After a stretch during which Gustavus's nationally-ranked penalty kill went 8-for-11 and allowed a power play goal in three consecutive games, the Gustie killers are back on track and have now negated 11 straight penalties. After a season-best 5-for-5 effort against St. Scholastica on Jan. 10, Gustavus blanked Augsburg on all four of its chances last weekend. Thanks to its recent efforts, Gustavus heads into the Augsburg series ranked second in NCAA Division III on the penalty kill at 92.3-percent (48-52). St. Norbert leads the country with a 93.8-percent (60/64) kill-rate.

#### By The Numbers

**8** - The number of points rookie forward Conor Deal has recorded over the last four games. After not hitting the scoresheet over a five-game stretch, Deal has posted five goals and three assists in January. The Anchorage product currently leads the team and ranks first in the MIAC in freshman scoring with 15 points (8G, 7A). His eight goals is tied for the league-lead amongst rookies.

**10** - The number of games between freshman blueliner Jake Bushey's second and third goals of the season. Bushey began the year hot with four goals in the first four games and then didn't hit the back of the net until last Friday against Augsburg - a game which he also distributed two assists. The Duluth native ranks second in the MIAC and first on the team in defenseman scoring with 12 points (5G, 7A).

**3** - The number of Saint Mary's players who rank inside the top five in the MIAC in power play points. The league's top-ranked power play is headlined by Martin Guse, Bob Marx, and Jed McGlasson. Gruse ranks first with eight power play points (3G, 5A), while Marx (3G, 4A) and McGlasson (3G, 4A) both have seven points and rank third.

**.922** - John McLean's career save percentage against Saint Mary's. With a record of 2-0-1, McLean has never lost to the Cardinals and holds a goals against average of 2.00 in those three games.

**44-27** - Gustavus's advantage in faceoffs last Saturday against Augsburg. With a 17-win advantage by the final buzzer, it was the Gusties' second-best faceoff margin of the season. The Black and Gold controlled the dots by 24 draws (51-27) in a 4-3 victory over UW-Stout on Nov. 8 at Don Roberts Ice Rink. Amongst players with more than 100 faceoffs this season, Conor Deal leads the team with a 59.3 win-percentage (159-109).



## 2014-15 GUSTAVUS ADOLPHUS MEN'S HOCKEY GAME NOTES

### HEAD COACH BRETT PETERSEN

#### 15th Season

**203-154-38 at Gustavus**

**Office: 507-933-7615**

**Email: bpeters4@gustavus.edu**



Brett Petersen is in his 15th season as the head coach of the Gustavus Adolphus men's hockey team.

The 2013-14 Gustavus men's hockey team posted its best finish in the conference standings since the 2009-10 season and made it back to the MIAC Playoff Championship for the third straight year after what was the team's seventh consecutive winning season. Gustavus finished second in the MIAC with 38 points after going 12-3-1 within conference play. After defeating Saint John's 3-2 in the MIAC Playoff Semifinals at Don Roberts Ice Rink, the Gusties saw their season end with a 2-1 loss to St. Thomas in front of a capacity crowd at the St. Thomas Ice Arena in the MIAC Playoff Championship. Head Coach Brett Petersen's club finished the year 16-7-4 overall, reaching the 15-win mark for the sixth straight season.

Gustavus had a strong showing in the MIAC's postseason awards last season with three players taking home all-conference honors. Gusties featured on the 20-player All-Conference Team included senior forward Corey Leivermann (North Mankato, Minn.), sophomore goaltender John McLean (Eagan, Minn.), and senior forward Adam Smyth (Burnsville, Minn.). Smyth earned all-conference marks for the second straight year, while Leivermann and McLean were both first time recipients. Corey Leivermann shared the MIAC scoring title after scoring 19 points off a league-leading 12 goals and seven assists inside conference play.

In his 15-plus seasons behind the Gustavus bench, Petersen has compiled a 203-154-38 overall record. His win total at Gustavus ranks second behind legendary coach Don Roberts. He has been named MIAC Coach of the Year twice, once in 2001-02 after helping the Gusties make the jump from ninth place the year before to a second place finish in the conference, and again in 2009-10 after leading the Gusties to their first MIAC Title since 1993. While at Gustavus, Petersen has worked with 18 All-Conference players, three MIAC Player of the Year recipients, eight AHCA All-Americans and one National Player of the Year (David Martinson, 2010).

Within MIAC play, Gustavus holds a record 126-81-25 during the Petersen era. The Gusties have earned a trip to the MIAC Playoffs 13 straight seasons and have advanced to the MIAC Playoff Championship a total of six times under Petersen. Since the turn of the century, Gustavus has qualified for the NCAA Division III Tournament three times in 2009, 2010, and 2012. The Gusties advanced all the way to the NCAA Championship in 2009 where they fell to Neumann 4-1 at Herb Brooks Arena in Lake Placid, N.Y.

Petersen, a Roseville, Minnesota native, started his coaching career with the St. Paul Vulcans of the United States Hockey League (USHL) from 1992-1994. He was named assistant coach at St. Cloud State University of the Western Collegiate Hockey Association (WCHA) in the spring of 1994. During his six years at St. Cloud State, he coordinated the recruiting process for head coach Craig Dahl, while also being closely involved with practice planning, player development and bench coaching.

In the classroom, Petersen received his Bachelor of Science degree in business administration from the University of Denver in 1992 and his Master of Science degree in athletic administration in 2000 from St. Cloud State. He was a four-year letter winner in hockey while at Denver and was named to the WCHA All-Academic team for three years. Petersen served as the team's assistant captain during his junior and senior seasons.

Petersen had the opportunity to represent USA Hockey on several difference occasions during his playing career including the U.S. Olympic Festival in Oklahoma City in 1990 and the World University Games in Sapporo, Japan in 1991. He was drafted by the Calgary Flames of the National Hockey League (NHL), but did not play professional hockey.

Along with this coaching duties at Gustavus, Petersen's responsibilities include managing Lund Arena, the College's multi-purpose facility that houses the ice sheet from October through March for team practices and games. The facility is then used for physical education classes, concerts and conventions the rest of the year.

Brett lives in St. Peter with his wife, Linda, and their daughters, Katherine and Natalie.

### THE PETERSEN FILE

Hometown	Coaching	Year	Overall	MIAC	Finish
• Roseville, Minnesota	• 1992-94 - Assistant Coach, St. Paul Vulcans (USHL)	2000-01	6-16-3	3-11-2	9th
		2001-02	14-9-4	9-4-4	2nd
<b>Education</b>	• 1994-00 - Assistant Coach, St. Cloud State (WCHA)	2002-03	14-12-1	8-7-1	4th
		2003-04	12-11-3	9-5-2	3rd
• Bachelor's Degree: Business Administration (Denver '92)	<b>Coaching Awards</b>	2004-05	10-14-1	7-8-1	T-5th
		2005-06	14-11-1	9-7-0	5th
• Master's Degree: Sport Administration (St. Cloud State '00)	• MIAC Coach of the Year - 2002, 2010	2006-07	11-13-2	9-6-1	5th
		2007-08	13-12-1	10-6-0	4th
<b>Family</b>	<b>NCAA Appearances</b>	2008-09	19-11-0	10-6-0	T-2nd
		2009-10	20-7-2	12-2-2	1st
• Wife, Linda; daughters Katherine and Natalie.	<b>MIAC Titles</b>	2010-11	15-10-2	8-6-2	T-4th
		2011-12	17-7-5	8-5-3	2nd
		2012-13	17-8-3	9-5-2	4th
		2013-14	16-7-4	12-3-1	2nd
		2014-15	5-5-6	2-2-4	
	• 2010	<b>TOTALS</b>	<b>203-154-38</b>	<b>126-81-25</b>	



## 2014-15 GUSTAVUS ADOLPHUS MEN'S HOCKEY GAME NOTES

### GAME 2014-15 GUSTAVUS TEAM SUPERLATIVES

**Largest Margin of Victory:** 3 (2x), most recent 3-0 win vs. Augsburg (Jan. 17)

**Largest Margin of Defeat:** 3, 4-1 loss vs. UW-Stevens Point (Nov. 7)

**Most Goals, Game:** 6, 6-3 win vs. St. Olaf (Nov. 2)

**Most Goals, 1st Period:** 2 (2x), most recent 3-2 loss vs. Williams (Jan. 2)

**Most Goals, 2nd Period:** 3, 6-3 win vs. St. Olaf (Nov. 2)

**Most Goals, 3rd Period:** 3, 6-3 win vs. St. Olaf (Nov. 2)

**Most Goals Allowed, 1st Period:** 3, 4-2 loss vs. Bethel (Oct. 31)

**Most Goals Allowed, 2nd Period:** 2 (4x), most recent 4-2 loss vs. St. Olaf (Dec. 6)

**Most Goals Allowed, 3rd Period:** 3, 3-3 tie vs. Concordia (Nov. 15)

**Most Shots, Game:** 45 (2x), most recent 3-3 tie vs. Lawrence (Nov. 29)

**Most Shots, 1st Period:** 17, 2-1 loss vs. Marian (Nov. 30)

**Most Shots, 2nd Period:** 17, 3-3 tie vs. Lawrence (Nov. 29)

**Most Shots, 3rd Period:** 16, 4-2 loss vs. St. Olaf (Dec. 6)

**Most Shots, OT:** 7, 4-3 win vs. UW-Stout (Nov. 8)

**Most Shots Allowed, Game:** 39, 0-0 tie vs. St. Scholastica (Jan. 10)

**Most Shots Allowed, 1st Period:** 15, 3-2 loss vs. Williams (Jan. 2)

**Most Shots Allowed, 2nd Period:** 18, 2-1 win vs. Concordia (Nov. 14)

**Most Shots Allowed, 3rd Period:** 16, 0-0 tie vs. St. Scholastica (Jan. 10)

**Most Shots Allowed, OT:** 4, 3-3 tie vs. St. Olaf (Dec. 5)

**Fewest Shots, Game:** 15, 2-1 win vs. Concordia (Nov. 14)

**Fewest Shots, Regulation Period:** 3 (2x), second period of 2-1 win vs. Concordia (Nov. 14)

**Fewest Shots, 1st Period:** 4 (2x), most recent 3-3 tie vs. Concordia (Nov. 15)

**Fewest Shots, 2nd Period:** 3, 2-1 win vs. Concordia (Nov. 14)

**Fewest Shots, 3rd Period:** 4, 2-1 loss vs. Marina (Nov. 30)

**Fewest Shots, OT:** 0, 3-3 tie vs. Concordia (Nov. 15)

**Fewest Shots Allowed, Game:** 14, 4-2 win vs. Finlandia (Jan. 9)

**Fewest Shots Allowed, Regulation Period:** 2, first period of 2-1 win vs. Concordia (Nov. 14)

**Fewest Shots Allowed, 1st Period:** 2, 2-1 win vs. Concordia (Nov. 14)

**Fewest Shots Allowed, 2nd Period:** 6 (2x), 3-0 win vs. Augsburg (Jan. 17)

**Fewest Shots Allowed, 3rd Period:** 3, 3-3 tie vs. Lawrence (Nov. 29)

**Fewest Shots Allowed, OT:** 0 (2x), most recent 2-2 tie vs. Hamline (Nov. 22)

**Most PIM, Game:** 42, 4-3 win vs. UW-Stout (Nov. 8)

**Most Opponent PIM, Game:** 55, 4-3 win vs. UW-Stout (Nov. 8)

**Most Combined PIM:** 76, 4-3 win vs. UW-Stout (Nov. 8)

**Fewest PIM, Game:** 4 (2x), most recent 2-1 win vs. Concordia (Nov. 14)

**Fewest Opponent PIM, Game:** 2, 2-1 win vs. Concordia (Nov. 14)

**Fewest Combined PIM, Game:** 6, 2-1 win vs. Concordia (Nov. 14)

**Most PPG, Game:** 2, 5-3 loss vs. Augsburg (Jan. 16)

**Best PP, Game:** 1-1, 2-1 win vs. Concordia (Nov. 14)

**Most PP Opportunities, Game:** 5 (2x), most recent 4-2 loss vs. St. Olaf (Dec. 6)

**Best PK:** 5-5 (2x), most recent 0-0 tie vs. St. Scholastica (Jan. 10)

**Most Opponent PPG, Game:** 1 (4x), most recent 3-2 loss vs. Williams (Jan. 2)

**Most Opponent PP Opportunities, Game:** 5 (2x), most recent 0-0 tie vs. St. Scholastica (Jan. 10)

**Best Opponent PK:** 5-5 (2x), most recent 4-2 loss vs. St. Olaf (Dec. 6)



## 2014-15 GUSTAVUS ADOLPHUS MEN'S HOCKEY GAME NOTES

### 2014-15 GUSTAVUS MEN'S HOCKEY ROSTER

<u>NO.</u>	<u>NAME</u>	<u>YR</u>	<u>POS</u>	<u>HGT</u>	<u>WGT</u>	<u>HOMETOWN</u>	<u>HIGH SCHOOL</u>	<u>LAST TEAM</u>
1	John McLean	Jr.	G	6-8	220	Eagan, Minn.	Minehaha Academy	Wisconsin Wilderness (SIJHL)
2	Sam Smith	Sr.	D	5-11	205	Vancouver, B.C.	Flower Mound	Valley Jr. Warriors (EHL)
3	Jared Docken	So.	D	5-10	175	Northfield, Minn.	Northfield	Brookings Blizzard (NAHL)
4	Jack Walsh <sup>C</sup>	Sr.	F	6-3	200	Mahtomedi, Minn.	Mill-Murray	Austin Bruins (NAHL)
5	Drew Aspinwall	So.	D	6-1	195	Maple Grove, Minn.	Maple Grove	Fresno Monsters (NAHL)
6	Tyler Lapi <sup>C</sup>	Sr.	F	6-2	200	New Prague, Minn.	New Prague	Wisconsin (WCHA)
7	Schyler Adams	Sr.	F	5-9	185	New Prague, Minn.	New Prague	Owatonna Express (NAHL)
9	Jake McCann	Fr.	F	5-9	165	Shoreview, Minn.	Roseville	Minot Minotauros (NAHL)
10	Gavin Tufte	Jr.	F	6-0	220	Blaine, Minn.	Blaine	UW-Stout (WIAA)
11	Jake Bushey	Fr.	D	6-0	180	Duluth, Minn.	Duluth Marshall	Fairbanks Ice Dogs (NAHL)
12	Conor Deal	Fr.	F	5-11	185	Anchorage, Alaska	Polaris K-12 School	Kenai River Brown Bears (NAHL)
13	Cameron Jackson	So.	D	6-1	190	Lakeville, Minn.	Lakeville South	Fort Frances Lakers (SIJHL)
14	Tim Donohue	Fr.	F	5-11	195	Bloomington, Minn.	Jefferson	Minot Minotauros (NAHL)
15	Matt Petersen	So.	D	5-11	180	Center City, Minn.	Chisago Lakes	Granite City Lumberjacks (NA3HL)
16	Darren Lapi	Jr.	F	6-2	210	New Prague, Minn.	New Prague	Odessa Jackalopes (NAHL)
17	Sam Akins	So.	F	6-2	205	Stowe, Vt	Northwood	Dallas Ice Jets (WSHL)
18	Colin Hernon	Fr.	F	5-11	180	Bloomington, Minn.	Jefferson	Minnesota Magicians (NAHL)
19	Sam Majka	So.	F	6-0	190	Wayzata, Minn.	Wayzata	Coquitlam Express (BCHL)
20	Nate Paulsen	Sr.	D	6-2	195	La Habra, Calif.	La Habra	Wisconsin Wilderness (SIJHL)
21	Mason Wyman	So.	F	6-3	210	Burnsville, Minn.	Burnsville	Minnesota Flying Aces (NA3HL)
22	Andy Pearson	Sr.	F	5-10	180	Burnsville, Minn.	Burnsville	Alaska Avalanche (NAHL)
23	Blake Barnes	So.	D	5-11	175	Broken Arrow, Okla.	Shattuck-St. Mary's	Valley Jr. Warriors (EHL)
24	Cory Ellis	Sr.	F	6-2	215	St. Paul, Minn.	St. Paul Johnson	Austin Bruins (NAHL)
25	Ross Kovacs	So.	D	6-3	215	Dickinson, N.D.	Dickinson	Hawkesbury Hawks (CCHL)
26	Blake Schammel	Sr.	F	5-10	190	Red Wing, Minn.	Red Wing	Bismarck Bobcats (NAHL)
27	Joncarlo Westerlund	So.	F	5-11	185	Baudette, Minn.	Lake of the Woods	Dallas Ice Jets (WSHL)
30	Isaak Tjaden	Fr.	G	5-9	155	Eagan, Minn.	Northfield	Billings Bulls (AWHL)
35	Erik Johnson	So.	G	6-1	180	Rice, Minn.	Sauk Rapids-Rice	Rochester Ice Hawks (MNJHL)

**HEAD COACH:** Brett Petersen (15th Season)

**ASSISTANT COACH:** David Martinson

**C:** Denotes Captain





## 2014-15 GUSTAVUS ADOLPHUS MEN'S HOCKEY GAME NOTES

### 2014-15 GUSTAVUS MEN'S HOCKEY PRONUNCIATION GUIDE



**FRONT ROW (L TO R)** | Erik Johnson, Andy Pearson, Sam Smith, Nate Paulsen, Tyler Lopic, Jack Walsh, Cory Ellis, Blake Schammel, Schyler Adams, John McLean

**SECOND ROW (L TO R)** | Head Coach Brett Petersen, Cameron Jackson, Darren Lopic, Ross Kovacs, Mason Wyman, Sam Akins, Gavin Tufte, Drew Aspinwall, Sam Majka, Isaak Tjaden, Assistant Coach David Martinson

**TOP ROW (L TO R)** | Student Manager Andy Regner, Jake McCann, Joncarlo Westerlund, Coin Hernon, Blake Barnes, Jake Bushey, Tim Donohue, Matt Petersen, Conor Deal, Jared Docken

### PRONUNCIATION GUIDE

7	Schyler Adams (SKY-ler)	19	Sam Majka (MAY-kuh)
10	Gavin Tufte (TUFF-tee)	21	Mason Wyman (WHY-man)
11	Jake Bushey (BUSH-ie)	25	Ross Kovacs (COE-vacks)
14	Tim Donohue (DONNA-hue)	26	Blake Schammel (SHAM-el)
17	Sam Akins (A (as in acorn)-kins)	30	Isaak Tjaden (CHAY-den)
25	Ross Kovacs (COE-vacks)		(CH as in church)





## 2014-15 GUSTAVUS ADOLPHUS MEN'S HOCKEY GAME NOTES

### 2014-15 INDIVIDUAL GAME HIGHS



#### **No. 1**

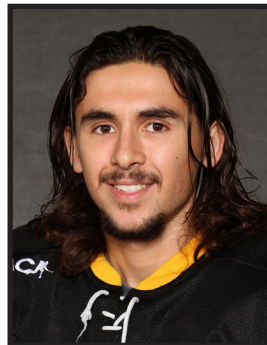
John McLean

**Fewest Goals:** 0 (2x), last Jan. 17 vs. Augsburg

**Most Saves:** 39, Jan. 10 vs. St. Scholastica

**Most Minutes:** 65, Jan. 10 vs. St. Scholastica

**Winning-Streak:** 1



#### **No. 5**

Drew Aspinwall

**Goals:** 1 (2x), last Dec. 5 vs. St. Olaf

**Assists:** 2, Nov. 2 vs. St. Olaf

**Points:** 2, Nov. 2 vs. St. Olaf

**Plus/Minus:** +2, Jan. 17 vs. Augsburg

**PIM:** 2 (2x), last Nov. 21 vs. Hamline

**Shots On Goal:** 4 (2x), last Nov. 30 vs. Marian



#### **No. 2**

Sam Smith

**Goals:** N/A

**Assists:** 1 (2x), last Jan. 9 vs. Finlandia

**Points:** 1 (2x), last Jan. 9 vs. Finlandia

**Plus/Minus:** +2, Nov. 8 vs. UW-Stout

**PIM:** 2 (5x), last Jan. 10 vs. St. Scholastica

**Shots On Goal:** 4, Nov. 29 vs. Lawrence



#### **No. 6**

Tyler Lopic

**Goals:** 2, Nov. 22 vs. Hamline

**Assists:** 1 (2x), last Dec. 6 vs. St. Olaf

**Points:** 2, Nov. 22 vs. Hamline

**Plus/Minus:** +1 (4x), last Jan. 17 vs. Augsburg

**PIM:** 4 (2x), last Jan. 2 vs. Williams

**Shots On Goal:** 6, Nov. 22 vs. Hamline



#### **No. 3**

Jared Docken

**Goals:** N/A

**Assists:** 1 (3x), last Jan. 9 vs. Finlandia

**Points:** 1 (3x), last Jan. 9 vs. Finlandia

**Plus/Minus:** +1 (5x), last Jan. 17 vs. Augsburg

**PIM:** 2, Nov. 7 vs. UW-Stevens Point

**Shots On Goal:** 4, Nov. 8 vs. UW-Stout



#### **No. 7**

Schyler Adams

**Goals:** 1, Dec. 5 vs. St. Olaf

**Assists:** 1 (3x), last Jan. 17 vs. Augsburg

**Points:** 1 (3x), last Jan. 17 vs. Augsburg

**Plus/Minus:** +2, Dec. 5 vs. St. Olaf

**PIM:** N/A

**Shots On Goal:** 4 (4x), last Jan. 17 vs. Augsburg



#### **No. 4**

Jack Walsh

**Goals:** 1, Nov. 30 vs. Marian

**Assists:** 3, Dec. 5 vs. St. Olaf

**Points:** 3, Dec. 5 vs. St. Olaf

**Plus/Minus:** +1 (3x), last Dec. 5 vs. St. Olaf

**PIM:** 2 (6x), last Jan. 2 vs. Williams

**Shots On Goal:** 4 (2x), last Jan. 10 vs. St. Scholastica



#### **No. 9**

Jake McCann

**Goals:** 1, Nov. 29 vs. Lawrence

**Assists:** 1 (3x), last Jan. 17 vs. Augsburg

**Points:** 2, Nov. 29 vs. Lawrence

**Plus/Minus:** +2, Nov. 29 vs. Lawrence

**PIM:** 2 (2x), last Nov. 14 vs. Concordia

**Shots On Goal:** 3, Nov. 29 vs. Lawrence



## 2014-15 GUSTAVUS ADOLPHUS MEN'S HOCKEY GAME NOTES

### 2014-15 INDIVIDUAL GAME HIGHS



#### **No. 10**

Gavin Tufte

**Goals:** 1 (4x), last Jan. 9 vs. Finlandia

**Assists:** 1 (3x), last Dec. 6 vs. St. Olaf

**Points:** 2, Nov. 2 vs. St. Olaf

**Plus/Minus:** +2 (2x), last Jan. 9 vs. Finlandia

**PIM:** 2 (2x), last Dec. 6 vs. St. Olaf

**Shots On Goal:** 4 (2x), Nov. 8 vs. UW-Stout



#### **No. 14**

Tim Donohue

**Goals:** N/A

**Assists:** 2, Nov. 15 vs. Concordia

**Points:** 2, Nov. 15 vs. Concordia

**Plus/Minus:** +2 (3x), last Jan. 9 vs. Finlandia

**PIM:** 4, Nov. 22 vs. Hamline

**Shots On Goal:** 4 (3x), last Dec. 5 vs. St. Olaf



#### **No. 11**

Jake Bushey

**Goals:** 2, Nov. 2 vs. St. Olaf

**Assists:** 2, Jan. 16 vs. Augsburg

**Points:** 3 (2x), last Jan. 16 vs. Augsburg

**Plus/Minus:** +2, Jan. 17 vs. Augsburg

**PIM:** 15, Nov. 8 vs. UW-Stout

**Shots On Goal:** 5 (2x), last Jan. 9 vs. Finlandia



#### **No. 15**

Matt Petersen

**Goals:** N/A

**Assists:** N/A

**Points:** N/A

**Plus/Minus:** N/A

**PIM:** N/A

**Shots On Goal:** N/A



#### **No. 12**

Conor Deal

**Goals:** 2, Jan. 9 vs. Finlandia

**Assists:** 2 (2x), last Jan. 16 vs. Augsburg

**Points:** 3 (2x), last Jan. 16 vs. Augsburg

**Plus/Minus:** +3, Jan. 9 vs. Finlandia

**PIM:** 2 (3x), last Dec. 5 vs. St. Olaf

**Shots On Goal:** 6, Jan. 17 vs. Augsburg



#### **No. 16**

Darren Lopic

**Goals:** 1 (2x), last Jan. 17 vs. Augsburg

**Assists:** 1 (2x), last Nov. 7 vs. UW-Stevens Point

**Points:** 1 (4x), last Jan. 17 vs. Augsburg

**Plus/Minus:** +1, Jan. 17 vs. Augsburg

**PIM:** 15, Nov. 8 vs. UW-Stout

**Shots On Goal:** 8, Jan. 10 vs. St. Scholastica



#### **No. 13**

Cameron Jackson

**Goals:** 1, Nov. 2 vs. St. Olaf

**Assists:** 1, Nov. 14 vs. Concordia

**Points:** 1 (2x), last Nov. 14 vs. Concordia

**Plus/Minus:** +3, Nov. 2 vs. St. Olaf

**PIM:** 2, Dec. 6 vs. St. Olaf

**Shots On Goal:** 2 (4x), last Nov. 29 vs. Lawrence



#### **No. 17**

Sam Akins

**Goals:** N/A

**Assists:** N/A

**Points:** N/A

**Plus/Minus:** +1, Nov. 2 vs. St. Olaf

**PIM:** N/A

**Shots On Goal:** 2, Nov. 2 vs. St. Olaf





## 2014-15 GUSTAVUS ADOLPHUS MEN'S HOCKEY GAME NOTES

### 2014-15 INDIVIDUAL GAME HIGHS

**No. 18**

Colin Hernon

**Goals:** 1, Nov. 2 vs. St. Olaf

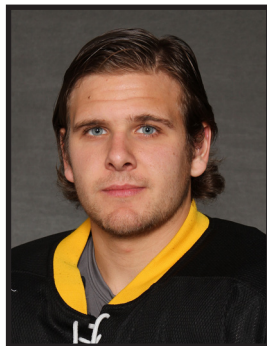
**Assists:** N/A

**Points:** 1, Nov. 2 vs. St. Olaf

**Plus/Minus:** +2, Jan. 9 vs. Finlandia

**PIM:** 2, Nov. 21 vs. Hamline

**Shots On Goal:** 5, Nov. 2 vs. St. Olaf

**No. 22**

Andy Pearson

**Goals:** 1 (3x), last Dec. 6 vs. St. Olaf

**Assists:** 1 (5x), last Nov. 29 vs. Lawrence

**Points:** 2, Nov. 29 vs. Lawrence

**Plus/Minus:** +3, Nov. 2 vs. St. Olaf

**PIM:** N/A

**Shots On Goal:** 6, Nov. 29 vs. Lawrence

**No. 19**

Sam Majka

**Goals:** 1, Dec. 6 vs. St. Olaf

**Assists:** 1 (2x), Jan. 17 vs. Augsburg

**Points:** 1 (2x), Jan. 17 vs. Augsburg

**Plus/Minus:** +1 (3x), last Jan. 17 vs. Augsburg

**PIM:** 2 (3x), last Jan. 9 vs. Finlandia

**Shots On Goal:** 4 (3x), last Jan. 10 vs. St. Scholastica

**No. 23**

Blake Barnes

**Goals:** N/A

**Assists:** 1, Jan. 9 vs. Finlandia

**Points:** 1, Jan. 9 vs. Finlandia

**Plus/Minus:** +2, Jan. 9 vs. Finlandia

**PIM:** 2 (2x), last Jan. 9 vs. Finlandia

**Shots On Goal:** 1 (3x), last Nov. 30 vs. Marian

**No. 20**

Nate Paulsen

**Goals:** 1, Jan. 9 vs. Finlandia

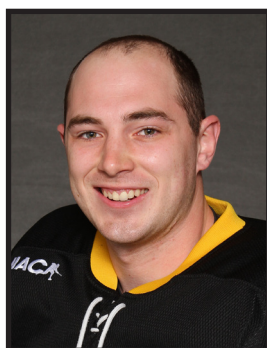
**Assists:** 1, Jan. 9 vs. Finlandia

**Points:** 2, Jan. 9 vs. Finlandia

**Plus/Minus:** +2, Jan. 9 vs. Finlandia

**PIM:** 2, Jan. 16 vs. Augsburg

**Shots On Goal:** 4 (2x), Jan. 10 vs. St. Scholastica

**No. 24**

Cory Ellis

**Goals:** 1, Dec. 5 vs. St. Olaf

**Assists:** 1 (4x), last Jan. 17 vs. Augsburg

**Points:** 2, Dec. 5 vs. St. Olaf

**Plus/Minus:** +2, Dec. 5 vs. St. Olaf

**PIM:** 2, Dec. 6 vs. St. Olaf

**Shots On Goal:** 4, Dec. 5 vs. St. Olaf

**No. 21**

Mason Wyman

**Goals:** N/A

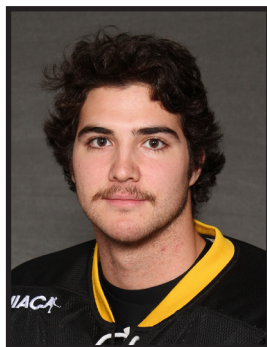
**Assists:** N/A

**Points:** N/A

**Plus/Minus:** 0 (2x), last Nov. 15 vs. Concordia

**PIM:** 2, Nov. 15 vs. Concordia

**Shots On Goal:** 2, Oct. 31 vs. Bethel

**No. 25**

Ross Kovacs

**Goals:** N/A

**Assists:** N/A

**Points:** N/A

**Plus/Minus:** +1 (3x), last Nov. 21 vs. Hamline

**PIM:** 4, Dec. 6 vs. St. Olaf

**Shots On Goal:** 2 (3x), last Nov. 21 vs. Hamline





## 2014-15 GUSTAVUS ADOLPHUS MEN'S HOCKEY GAME NOTES

### 2014-15 INDIVIDUAL GAME HIGHS



#### **No. 26**

Blake Schammel

**Goals:** 2, Nov. 15 vs. Concordia

**Assists:** 1 (3x), last Jan. 16 vs. Augsburg

**Points:** 3, Nov. 15 vs. Concordia

**Plus/Minus:** +2 (2x), last Jan. 2 vs. Williams

**PIM:** 2 (3x), last Nov. 30 vs. Marian

**Shots On Goal:** 6 (2x), Nov. 21 vs. Hamline



#### **No. 30**

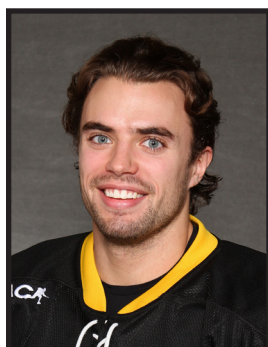
Isaak Tjaden

**Fewest Goals:** 2, Nov. 30 vs. Marian

**Most Saves:** 21, Nov. 30 vs. Marian

**Most Minutes:** 58:58, Nov. 30 vs. Marian

**Winning-Streak:** N/A



#### **No. 27**

Joncarlo Westerlund

**Goals:** 1, Nov. 21 vs Hamline

**Assists:** 1, Nov. 22 vs Hamline

**Points:** 1 (2x), last Nov. 22 vs Hamline

**Plus/Minus:** +1 (2x), last Nov. 22 vs. Hamline

**PIM:** N/A

**Shots On Goal:** 3 (2x), last Dec. 6 vs. St. Olaf



#### **No. 35**

Erik Johnson

**Fewest Goals:** 1, Nov. 14 vs. Concordia

**Most Saves:** 32, Nov. 8 vs. UW-Stout

**Most Minutes:** 65:00 (5x), last Dec. 5 vs. St. Olaf

**Winning-Streak:** 1





# 2014-15 GUSTAVUS ADOLPHUS MEN'S HOCKEY GAME NOTES

## 2014-15 COMBINED STATISTICS

### Gustavus Adolphus Hockey Gustavus Adolphus Combined Team Statistics (as of Jan 22, 2015) All games

Date	Opponent	Score	Att.
Oct 31	vs Bethel University	L 2-4	300
Nov 02	vs St. Olaf College	W 6-3	100
Nov 07	#2 UW-STEVENS POINT	L 1-4	515
Nov 08	UW-STOUT	Wot 4-3	535
* Nov 14	at Concordia-M'head	W 2-1	317
* Nov 15	at Concordia-M'head	To2 3-3	253
* Nov 21	at Hamline	Tot 3-3	475
* Nov 22	HAMLINE	To2 2-2	541
Nov 29	LAWRENCE	Tot 3-3	234
Nov 30	MARIAN	L 1-2	186
* Dec 05	ST. OLAF COLLEGE	Tot 3-3	502
* Dec 06	at St. Olaf College	L 2-4	492
Jan 02	#14 WILLIAMS COLLEGE	L 2-3	197
Jan 09	FINLANDIA UNIVERSITY	W 4-2	357
Jan 10	ST. SCHOLASTICA	Tot 0-0	359
* 01/16/15	at Augsburg College	L 3-5	417
* Jan 17	AUGSBURG COLLEGE	W 3-0	407

TEAM STATISTICS	GAC	OPP
<b>SHOT STATISTICS</b>		
Goals-Shot attempts	44-556	45-479
Shot pct.	.079	.094
Goals/Game	2.6	2.6
Shots/Game	32.7	28.2
<b>POWER PLAYS</b>		
Goals-Power Plays	9-47	3-49
Conversion Percent	.191	.061
Shot Attempts	72	69
Shot Percent	.125	.043
<b>SHORT-HANDED</b>		
Goals-Shot attempts	2-11	5-15
Shot Percent	.182	.333
<b>GOAL BREAKDOWN</b>		
Power Play	9	3
Short-handed	2	5
Empty net	2	2
Penalty	0	0
Unassisted	2	5
Overtime	1	0
Shootout	0	0
Delayed Penalty	0	0
<b>PENALTIES</b>		
Number	74	72
Minutes	170	199
Penalties/Game	4.4	4.2
Pen minutes/Game	10.0	11.7
<b>FACEOFFS (W-L)</b>	622-519	519-622
Faceoff W-L Pct.	.545	.455
<b>SHOOTOUTS (Made-Att)</b>	4-11	5-11

Record:	Overall	Home	Away	Neutral
ALL GAMES	5-6-6	3-3-4	1-2-2	1-1-0
CONFERENCE	2-2-4	1-0-2	1-2-2	0-0-0
NON-CONFERENCE	3-4-2	2-3-2	0-0-0	1-1-0

#	Player	gp	g	a	pts	sh	sh%	pen-min	pp	sh
12	Conor Deal	17	8	7	15	49	.163	3-6	1	0
11	Jake Bushey	16	5	7	12	30	.167	5-21	3	0
22	Blake Schammel	17	6	3	9	41	.146	3-6	3	0
26	Andy Pearson	17	3	5	8	39	.077	0-0	0	0
6	Tyler Lopic	15	4	3	7	40	.100	10-20	1	1
10	Gavin Tufte	15	4	3	7	29	.138	2-4	0	0
14	Tim Donohue	17	0	7	7	31	.000	10-20	0	0
5	Drew Aspinwall	17	2	4	6	30	.067	2-4	1	1
24	Cory Ellis	16	1	4	5	22	.045	1-2	0	0
4	Jack Walsh	17	1	4	5	27	.037	7-14	0	0
16	Darren Lopic	15	2	4	4	42	.048	9-29	0	0
7	Schlyer Adams	10	1	3	4	21	.048	0-0	0	0
9	Jake McCann	11	1	3	4	8	.125	2-4	0	0
19	Sam Majka	14	1	2	3	33	.030	3-6	0	0
3	Jared Docken	17	0	3	3	19	.000	1-2	0	0
13	Cameron Jackson	11	2	0	2	10	.200	1-2	0	0
20	Nate Paulsen	5	1	1	2	13	.077	1-2	0	0
27	Joncarlo Westerlund	6	1	1	2	9	.111	0-0	0	0
2	Sam Smith	17	0	2	2	23	.000	6-12	0	0
18	Colin Hermon	11	1	0	1	22	.045	1-2	0	0
23	Blake Barnes	6	0	1	1	3	.000	2-4	0	0
17	Sam Akins	3	0	0	0	3	.000	0-0	0	0
25	Ross Kovacs	13	0	0	0	10	.000	4-8	0	0
21	Mason Wyman	4	0	0	0	2	.000	1-2	0	0
Total		17	44	65	109	556	.079	74-170	9	2
Opponents		17	45	63	108	479	.094	72-199	3	5

#	Goalie	gp	min	ga	gaavg	saves	save%	w-l-t
1	John McLean	5	303:01	9	1.78	126	.933	2-2-1
30	Isaak Tjaden	1	58:58	2	2.04	21	.913	0-1-0
35	Erik Johnson	11	684:17	32	2.81	287	.900	3-3-4
TM	EMPTY NET	6	8:09	2	-	0	.000	0-0-0
Total		17	1054:25	45	2.56	434	.906	5-6-5
Opponents		17	1054:25	44	2.50	512	.921	6-5-5

Attendance Summary	GAC	Opponent
Total	3833	1954
Dates/Avg Per Date	10/383	5/391
Neutral Site #/Avg	2/200	

Goals by Period	1st	2nd	3rd	OT	Total
Gustavus Adolphus	13	14	16	1	44
Opponents	15	14	16	0	45

Shots by Period	1st	2nd	3rd	OT	Total
Gustavus Adolphus	182	181	174	19	556
Opponents	150	176	141	12	479

Saves by Period	1st	2nd	3rd	OT	Total
Gustavus Adolphus	135	162	125	12	434
Opponents	169	167	158	18	512



## 2014-15 GUSTAVUS ADOLPHUS MEN'S HOCKEY GAME NOTES

### 2014-15 TEAM STATISTICS

**Gustavus Adolphus Hockey**  
**Gustavus Adolphus Overall Team Statistics (as of Jan 22, 2015)**  
**All games**

Overall: 5-6-6 Conf: 2-2-4 Home: 3-3-4 Away: 1-2-2 Neut: 1-1-0

<b>TEAM STATISTICS</b>	<b>GAC</b>	<b>OPP</b>
<b>SHOT STATISTICS</b>		
Goals-Shot attempts	44-556	45-479
Shot pct.	.079	.094
Goals/Game	2.6	2.6
Shots/Game	32.7	28.2
Assists	65	63
<b>POWER PLAYS</b>		
Goals-Power Plays	9-47	3-49
Conversion Percent	.191	.061
Shot Attempts	72	69
Shot Percent	.125	.043
<b>SHORT-HANDED</b>		
Goals-Shot attempts	2-11	5-15
Shot Percent	.182	.333
<b>GOAL BREAKDOWN</b>		
Total Goals	44	45
Power Play	9	3
Short-handed	2	5
Empty net	2	2
Penalty	0	0
Unassisted	2	5
Overtime	1	0
Shootout	0	0
Delayed Penalty	0	0
<b>PENALTIES</b>		
Number	74	72
Minutes	170	199
Penalties/Game	4.4	4.2
Pen minutes/Game	10.0	11.7
Minor	70	62
Major	2	5
10-minute Misconduct	0	1
Game Misconduct	0	1
Gross Misconduct	0	0
Match	2	3
<b>FACEOFFS (W-L)</b>		
Faceoff W-L Pct.	.545	.455
<b>SHOOTOUTS (Made-Att)</b>		
	4-11	5-11
<b>ATTENDANCE</b>		
Total	3833	1954
Dates/Avg Per Date	10/383	5/391
Neutral Site #/Avg	2/200	

<b>Goals by Period</b>	<b>1st</b>	<b>2nd</b>	<b>3rd</b>	<b>OT</b>	<b>Total</b>
Gustavus Adolphus	13	14	16	1	44
Opponents	15	14	16	0	45

<b>Shots by Period</b>	<b>1st</b>	<b>2nd</b>	<b>3rd</b>	<b>OT</b>	<b>Total</b>
Gustavus Adolphus	182	181	174	19	556
Opponents	150	176	141	12	479

<b>Saves by Period</b>	<b>1st</b>	<b>2nd</b>	<b>3rd</b>	<b>OT</b>	<b>Total</b>
Gustavus Adolphus	135	162	125	12	434
Opponents	169	167	158	18	512





## 2014-15 GUSTAVUS ADOLPHUS MEN'S HOCKEY GAME NOTES

### 2014-15 INDIVIDUAL STATISTICS

#### Gustavus Adolphus Hockey Gustavus Adolphus Overall Individual Statistics (as of Jan 22, 2015) All games

Overall: 5-6-6 Conf: 2-2-4 Home: 3-3-4 Away: 1-2-2 Neut: 1-1-0

##	Player	gp	Shots					+-	Penalties				Goals									
			g	a	pts	sh	sh%		pen-min	min	maj	oth	pp	sh	fg	gw	gt	ot	ht	pn	ua	
12	Conor Deal	17	8	7	15	49	.163	+5	3-6	3	0	0	1	0	2	2	0	0	0	0	1	
11	Jake Bushey	16	5	7	12	30	.167	-4	5-21	3	1	1	3	0	0	0	0	0	0	0	0	
26	Blake Schammel	17	6	3	9	41	.146	-1	3-6	3	0	0	3	0	0	0	0	0	0	0	0	
22	Andy Pearson	17	3	5	8	39	.077	-4	0-0	0	0	0	0	0	0	0	1	0	0	0	0	
6	Tyler Lopic	15	4	3	7	40	.100	-7	10-20	10	0	0	1	1	1	0	0	0	0	0	0	
10	Gavin Tufte	15	4	3	7	29	.138	-1	2-4	2	0	0	0	0	0	1	0	1	0	0	0	
14	Tim Donohue	17	0	7	7	31	.000	+6	10-20	10	0	0	0	0	0	0	0	0	0	0	0	
5	Drew Aspinwall	17	2	4	6	30	.067	-2	2-4	2	0	0	1	1	0	0	0	0	0	0	1	
24	Cory Ellis	16	1	4	5	22	.045	-2	1-2	1	0	0	0	0	0	0	0	0	0	0	0	
4	Jack Walsh	17	1	4	5	27	.037	-4	7-14	7	0	0	0	0	0	0	0	0	0	0	0	
16	Darren Lopic	15	2	2	4	42	.048	-6	9-29	7	1	1	0	0	1	1	0	0	0	0	0	
7	Schylar Adams	10	1	3	4	21	.048	+3	0-0	0	0	0	0	0	0	0	0	0	0	0	0	
9	Jake McCann	11	1	3	4	8	.125	0	2-4	2	0	0	0	0	1	0	0	0	0	0	0	
19	Sam Majka	14	1	2	3	33	.030	-3	3-6	3	0	0	0	0	1	0	0	0	0	0	0	
3	Jared Docken	17	0	3	3	19	.000	-4	1-2	1	0	0	0	0	0	0	0	0	0	0	0	
13	Cameron Jackson	11	2	0	2	10	.200	+4	1-2	1	0	0	0	0	1	1	0	0	0	0	0	
20	Nate Paulsen	5	1	1	2	13	.077	+1	1-2	1	0	0	0	0	0	0	0	0	0	0	0	
27	Joncarlo Westerlund	6	1	1	2	9	.111	+2	0-0	0	0	0	0	0	0	0	1	0	0	0	0	
2	Sam Smith	17	0	2	2	23	.000	-2	6-12	6	0	0	0	0	0	0	0	0	0	0	0	
18	Colin Hernon	11	1	0	1	22	.045	0	1-2	1	0	0	0	0	0	0	0	0	0	0	0	
23	Blake Barnes	6	0	1	1	3	.000	-4	2-4	2	0	0	0	0	0	0	0	0	0	0	0	
17	Sam Akins	3	0	0	0	3	.000	-1	0-0	0	0	0	0	0	0	0	0	0	0	0	0	
25	Ross Kovacs	13	0	0	0	10	.000	-1	4-8	4	0	0	0	0	0	0	0	0	0	0	0	
21	Mason Wyman	4	0	0	0	2	.000	-3	1-2	1	0	0	0	0	0	0	0	0	0	0	0	
Total		17	44	65	109	556	.079	-28	74-170	70	2	2	9	2	7	5	2	1	0	0	2	
Opponents		17	45	63	108	479	.094	-	72-199	62	5	5	3	5	9	6	3	0	0	0	5	

##	Goalie	gp-gs	Goal average			Saves		Record				Goals allowed				
			minutes	ga	avg	saves	pct	w	l	t	sho	pp	sh	en	pen	sog
1	John McLean	5-5	303:01	9	1.78	126	.933	2	2	1	2	1	0	0	0	0
30	Isaak Tjaden	1-1	58:58	2	2.04	21	.913	0	1	0	0	0	0	0	0	0
35	Erik Johnson	11-11	684:17	32	2.81	287	.900	3	3	4	0	2	5	0	0	0
TM	EMPTY NET	6-0	8:09	2	-	0	.000	0	0	0	0	0	0	2	0	0
Total		17-0	1054:25	45	2.56	434	.906	5	6	5	2	3	5	2	0	0
Opponents		17-0	1054:25	44	2.50	512	.921	6	5	5	1	9	2	2	0	0



## 2014-15 GUSTAVUS ADOLPHUS MEN'S HOCKEY GAME NOTES

### 2014-15 CATEGORY LEADERS

#### Gustavus Adolphus Hockey Gustavus Adolphus Category Leaders (as of Jan 22, 2015) All games

## Points	GP	G	A	Pts	Sh
12 Conor Deal	17	8	7	15	49
11 Jake Bushey	16	5	7	12	30
26 Blake Schammel	17	6	3	9	41
22 Andy Pearson	17	3	5	8	39
6 Tyler Lopic	15	4	3	7	40
10 Gavin Tufte	15	4	3	7	29
14 Tim Donohue	17	0	7	7	31
5 Drew Aspinwall	17	2	4	6	30
24 Cory Ellis	16	1	4	5	22
4 Jack Walsh	17	1	4	5	27

## Goals	GP	G	A	Pts	Sh
12 Conor Deal	17	8	7	15	49
26 Blake Schammel	17	6	3	9	41
11 Jake Bushey	16	5	7	12	30
6 Tyler Lopic	15	4	3	7	40
10 Gavin Tufte	15	4	3	7	29
22 Andy Pearson	17	3	5	8	39
5 Drew Aspinwall	17	2	4	6	30
16 Darren Lopic	15	2	2	4	42
13 Cameron Jackson	11	2	0	2	10
24 Cory Ellis	16	1	4	5	22

## Power-Play Goals	GP	PPG
26 Blake Schammel	17	3
11 Jake Bushey	16	3

## Short-Handed Goals	GP	SHG
6 Tyler Lopic	15	1
5 Drew Aspinwall	17	1

## Game-Winning Goals	GP	GWG
12 Conor Deal	17	2

## Plus/Minus	GP	+/-
14 Tim Donohue	17	+6
12 Conor Deal	17	+5
13 Cameron Jackson	11	+4
7 Schyler Adams	10	+3
27 Joncarlo Westerlund	6	+2
20 Nate Paulsen	5	+1

## Assists	GP	G	A	Pts	Sh
12 Conor Deal	17	8	7	15	49
11 Jake Bushey	16	5	7	12	30
14 Tim Donohue	17	0	7	7	31
22 Andy Pearson	17	3	5	8	39
5 Drew Aspinwall	17	2	4	6	30
24 Cory Ellis	16	1	4	5	22
4 Jack Walsh	17	1	4	5	27
26 Blake Schammel	17	6	3	9	41
6 Tyler Lopic	15	4	3	7	40
10 Gavin Tufte	15	4	3	7	29

## Shots	GP	G	A	Pts	Sh	Sh%
12 Conor Deal	17	8	7	15	49	.163
16 Darren Lopic	15	2	2	4	42	.048
26 Blake Schammel	17	6	3	9	41	.146
6 Tyler Lopic	15	4	3	7	40	.100
22 Andy Pearson	17	3	5	8	39	.077
19 Sam Majka	14	1	2	3	33	.030
14 Tim Donohue	17	0	7	7	31	.000
11 Jake Bushey	16	5	7	12	30	.167
5 Drew Aspinwall	17	2	4	6	30	.067
10 Gavin Tufte	15	4	3	7	29	.138

## Shot Pct.	GP	G	A	Pts	Sh	Sh%
13 Cameron Jackson	11	2	0	2	10	.200
11 Jake Bushey	16	5	7	12	30	.167
12 Conor Deal	17	8	7	15	49	.163
26 Blake Schammel	17	6	3	9	41	.146
10 Gavin Tufte	15	4	3	7	29	.138
9 Jake McCann	11	1	3	4	8	.125
27 Joncarlo Westerlund	6	1	1	2	9	.111
6 Tyler Lopic	15	4	3	7	40	.100
22 Andy Pearson	17	3	5	8	39	.077
20 Nate Paulsen	5	1	1	2	13	.077

## Penalties	GP	Pen	Min
14 Tim Donohue	17	10	20
6 Tyler Lopic	15	10	20
16 Darren Lopic	15	9	29
4 Jack Walsh	17	7	14
2 Sam Smith	17	6	12
11 Jake Bushey	16	5	21
25 Ross Kovacs	13	4	8
12 Conor Deal	17	3	6
26 Blake Schammel	17	3	6
19 Sam Majka	14	3	6

## Penalty Minutes	GP	Pen	Min
16 Darren Lopic	15	9	29
11 Jake Bushey	16	5	21
14 Tim Donohue	17	10	20
6 Tyler Lopic	15	10	20
4 Jack Walsh	17	7	14
2 Sam Smith	17	6	12
25 Ross Kovacs	13	4	8
19 Sam Majka	14	3	6
26 Blake Schammel	17	3	6
12 Conor Deal	17	3	6



## 2014-15 GUSTAVUS ADOLPHUS MEN'S HOCKEY GAME NOTES

### 2014-15 GOALS-ASSISTS-POINTS

#### Gustavus Adolphus Hockey Gustavus Adolphus Game-by-Game Goals-Assists-Points (as of Jan 22, 2015) All games

Opponent	Date	Score	1	2	3	4	5	6	7	9	10	11	12
			MCLEAN,JOH	SMITH,SAM	DOCKEN,JAR	WALSH,JACK	ASPINWALL,	LAPIC, TYLER	ADAMS,SCHY	MCCANN,JAK	TUFTE,GAVIN	BUSHEY,JAK	DEAL,CONOR
vs BU	Oct 31	2-4 L	DNP	0-0-0	0-0-0	0-0-0	0-0-0	0-0-0	DNP	DNP	0-0-0	0-0-0	1-0-1
vs STO	Nov 02	6-3 W	DNP	0-0-0	0-0-0	0-0-0	0-2-2	0-1-1	DNP	0-1-1	1-1-2	2-1-3	0-1-1
UWSP	Nov 07	1-4 L	DNP	0-0-0	0-0-0	0-1-1	0-0-0	0-0-0	DNP	0-0-0	0-0-0	1-0-1	0-0-0
STOUT	Nov 08	4-3 W	DNP	0-0-0	0-1-1	0-0-0	1-0-1	1-1-2	DNP	0-0-0	1-0-1	1-0-1	0-0-0
at CC	Nov 14	2-1 W	DNP	0-0-0	0-0-0	0-0-0	0-0-0	0-0-0	DNP	0-0-0	0-0-0	DNP	1-0-1
at CC	Nov 15	3-3 t	DNP	0-0-0	0-0-0	0-0-0	0-0-0	0-0-0	DNP	0-0-0	0-0-0	0-0-0	1-2-3
at HUM	Nov 21	3-3 t	DNP	0-0-0	0-0-0	0-0-0	0-0-0	0-0-0	0-0-0	DNP	0-1-1	0-0-0	0-1-1
HUM	Nov 22	2-2 t	DNP	0-0-0	0-1-1	0-0-0	0-0-0	2-0-2	DNP	DNP	0-0-0	0-0-0	0-0-0
LU	Nov 29	3-3 t	DNP	0-0-0	0-0-0	0-0-0	0-0-0	0-0-0	0-1-1	1-1-2	1-0-1	0-1-1	0-0-0
MU	Nov 30	1-2 L	DNP	0-0-0	0-0-0	1-0-1	0-0-0	0-0-0	0-1-1	0-0-0	0-0-0	0-0-0	0-0-0
STO	Dec 05	3-3 t	DNP	0-0-0	0-0-0	0-3-3	1-0-1	0-0-0	1-0-1	DNP	DNP	0-1-1	0-0-0
at STO	Dec 06	2-4 L	DNP	0-1-1	0-0-0	0-0-0	0-0-0	0-1-1	0-0-0	0-0-0	0-1-1	0-0-0	0-0-0
WILM	Jan 02	2-3 L	0-0-0	0-0-0	0-0-0	0-0-0	0-1-1	0-0-0	0-0-0	DNP	0-0-0	0-1-1	1-1-2
FINNU-M	Jan 09	4-2 W	0-0-0	0-1-1	0-1-1	0-0-0	0-1-1	DNP	0-0-0	0-0-0	1-0-1	0-1-1	2-0-2
CSS	Jan 10	0-0 t	0-0-0	0-0-0	0-0-0	0-0-0	0-0-0	DNP	0-0-0	0-0-0	0-0-0	0-0-0	0-0-0
at AUG	01/16/15	3-5 L	0-0-0	0-0-0	0-0-0	0-0-0	0-0-0	0-0-0	0-0-0	DNP	0-0-0	1-2-3	1-2-3
AUG	Jan 17	3-0 W	0-0-0	0-0-0	0-0-0	0-0-0	0-0-0	1-0-1	0-1-1	0-1-1	DNP	0-0-0	1-0-1

Opponent	Date	Score	13	14	16	17	18	19	20	21	22	23	24
			JACKSON,CA	DONOHUE,TI	LAPIC,DARRE	AKINS,SAM	HERNON,COL	MAJKA,SAM	PAULSEN,NA	WYMAN,MAS	PEARSON,AN	BARNES,BLA	ELLIS,CORY
vs BU	Oct 31	2-4 L	DNP	0-0-0	0-1-1	0-0-0	DNP	0-0-0	DNP	0-0-0	0-1-1	0-0-0	0-0-0
vs STO	Nov 02	6-3 W	1-0-1	0-1-1	0-0-0	0-0-0	1-0-1	DNP	DNP	DNP	1-0-1	DNP	0-0-0
UWSP	Nov 07	1-4 L	0-0-0	0-0-0	0-1-1	0-0-0	0-0-0	DNP	DNP	DNP	0-0-0	DNP	0-0-0
STOUT	Nov 08	4-3 W	DNP	0-0-0	0-0-0	DNP	0-0-0	DNP	DNP	0-0-0	0-1-1	0-0-0	0-0-0
at CC	Nov 14	2-1 W	1-0-1	0-1-1	DNP	DNP	0-0-0	0-1-1	DNP	0-0-0	0-1-1	0-0-0	0-0-0
at CC	Nov 15	3-3 t	0-0-0	0-2-2	0-0-0	DNP	DNP	0-0-0	DNP	0-0-0	0-0-0	DNP	0-0-0
at HUM	Nov 21	3-3 t	0-0-0	0-0-0	1-0-1	DNP	0-0-0	0-0-0	DNP	DNP	0-1-1	DNP	0-1-1
HUM	Nov 22	2-2 t	0-0-0	0-0-0	0-0-0	DNP	0-0-0	0-0-0	DNP	DNP	0-0-0	DNP	0-0-0
LU	Nov 29	3-3 t	0-0-0	0-1-1	0-0-0	DNP	0-0-0	0-0-0	DNP	DNP	1-1-2	0-0-0	DNP
MU	Nov 30	1-2 L	DNP	0-0-0	0-0-0	DNP	DNP	0-0-0	DNP	DNP	0-0-0	0-0-0	0-1-1
STO	Dec 05	3-3 t	0-0-0	0-0-0	0-0-0	DNP	0-0-0	0-0-0	DNP	DNP	0-0-0	DNP	1-1-2
at STO	Dec 06	2-4 L	0-0-0	0-0-0	DNP	DNP	DNP	1-0-1	DNP	DNP	1-0-1	DNP	0-0-0
WILM	Jan 02	2-3 L	0-0-0	0-1-1	0-0-0	DNP	DNP	0-0-0	0-0-0	DNP	0-0-0	DNP	0-0-0
FINNU-M	Jan 09	4-2 W	DNP	0-1-1	0-0-0	DNP	0-0-0	0-0-0	1-1-2	DNP	0-0-0	0-1-1	0-0-0
CSS	Jan 10	0-0 t	DNP	0-0-0	0-0-0	DNP	0-0-0	0-0-0	0-0-0	DNP	0-0-0	DNP	0-0-0
at AUG	01/16/15	3-5 L	DNP	0-0-0	0-0-0	DNP	DNP	0-0-0	0-0-0	DNP	0-0-0	DNP	0-0-0
AUG	Jan 17	3-0 W	0-0-0	0-0-0	1-0-1	DNP	0-0-0	0-1-1	0-0-0	DNP	0-0-0	DNP	0-1-1

Opponent	Date	Score	25	26	27	30	35
			KOVACS,ROS	SCHAMMEL,B	WESTERLUN	TJADEN,ISAA	JOHNSON,ER
vs BU	Oct 31	2-4 L	0-0-0	1-0-1	DNP	DNP	0-0-0
vs STO	Nov 02	6-3 W	0-0-0	0-1-1	DNP	DNP	0-0-0
UWSP	Nov 07	1-4 L	0-0-0	0-0-0	DNP	DNP	0-0-0
STOUT	Nov 08	4-3 W	0-0-0	0-0-0	DNP	DNP	0-0-0
at CC	Nov 14	2-1 W	0-0-0	0-0-0	DNP	DNP	0-0-0
at CC	Nov 15	3-3 t	0-0-0	2-1-3	DNP	DNP	0-0-0
at HUM	Nov 21	3-3 t	0-0-0	1-0-1	1-0-1	DNP	0-0-0
HUM	Nov 22	2-2 t	0-0-0	0-0-0	0-1-1	DNP	0-0-0
LU	Nov 29	3-3 t	DNP	0-0-0	DNP	DNP	0-0-0
MU	Nov 30	1-2 L	0-0-0	0-0-0	DNP	0-0-0	DNP
STO	Dec 05	3-3 t	0-0-0	0-0-0	0-0-0	DNP	0-0-0
at STO	Dec 06	2-4 L	0-0-0	0-0-0	0-0-0	DNP	0-0-0
WILM	Jan 02	2-3 L	DNP	1-0-1	0-0-0	DNP	DNP
FINNU-M	Jan 09	4-2 W	DNP	0-0-0	DNP	DNP	DNP
CSS	Jan 10	0-0 t	0-0-0	0-0-0	DNP	DNP	DNP
at AUG	01/16/15	3-5 L	0-0-0	1-1-2	0-0-0	DNP	DNP
AUG	Jan 17	3-0 W	DNP	0-0-0	DNP	DNP	DNP