



GUSTAVUS WOMEN'S HOCKEY NOTES 2014-15

Gustavus Sports Information

800 W College Ave, St. Peter, MN 56082
gustavus.edu/athletics
(507) 933-7647 • sportsinfo@gustavus.edu

Women's Hockey Media Contact
Nick Hoelmer, Graduate Assistant
(507) 933-8411 • nhoelmer@gustavus.edu

Follow Gustavus Athletics Online



Twitter
@GustieAthletics



Flickr
flickr.com/photos/gogusties



Facebook
facebook.com/GustieAthletics



YouTube
youtube.com/gustavusathletics



Game Central
portal.stretchinternet.com/gac



Instagram
instagram.com/gustieathletics

2014-15 SCHEDULE

| DATE | OPPONENT | TIME/RESULT |
|-----------------|------------------------------------|-------------|
| NOVEMBER | | |
| 4 | No. 9 UW-SUPERIOR | W 3-1 |
| 14 | CONCORDIA COLLEGE | W 3-1 |
| 15 | CONCORDIA COLLEGE | W 2-0 |
| 21 | HAMLIN UNIVERSITY | W 6-3 |
| 22 | Hamline University | W 4-0 |
| 29 | No. 1 Plattsburgh State University | T 4-4 (SL) |
| 30 | No. 5 Middlebury College | L 2-3 (OT) |
| DECEMBER | | |
| 5 | St. Olaf College | W 7-2 |
| 6 | ST. OLAF COLLEGE | T 1-1 |
| 10 | No. 6 UW-River Falls | W 3-2 |
| 13 | No. 7 UW-STEVENS POINT | W 3-1 |
| JANUARY | | |
| 9 | NO. 7 ADRIAN COLLEGE | 5 P.M. |
| 10 | LAKE FOREST COLLEGE | 2 P.M. |
| 16 | AUGSBURG COLLEGE | 7 p.m. |
| 17 | Augsburg College | 2 p.m. |
| 23 | SAINT MARY'S UNIVERSITY | 7 p.m. |
| 24 | Saint Mary's University | 2 p.m. |
| 30 | COLLEGE OF SAINT BENEDICT | 7 p.m. |
| 31 | College of Saint Benedict | 4:15 p.m. |
| FEBRUARY | | |
| 6 | St. Catherine University | 7 p.m. |
| 7 | ST. CATHERINE UNIVERSITY | 2 p.m. |
| 13 | University of St. Thomas | 7:30 p.m. |
| 14 | UNIVERSITY OF ST. THOMAS | 2 p.m. |
| 20 | BETHEL UNIVERSITY | 7 p.m. |
| 21 | Bethel University | 2 p.m. |

HOME GAMES IN BOLD



4 Gustavus Adolphus

Golden Gusties
(8-1-2 Overall, 5-0-1 MIAC)

vs.

7 Adrian College

Bulldogs
(9-0-2 Overall, 7-0-1 NCHA)



Game 12

Date: Friday, January 9 • Time: 5 p.m. • Location: St. Peter

Arena: Don Roberts Ice Rink

Live Stats: <https://gustavus.edu/athletics/whky/LIVE/xlive.htm>



4 Gustavus Adolphus

Golden Gusties
(8-1-2 Overall, 5-0-1 MIAC)

vs.

Lake Forest College

Foresters
(7-3-1 Overall, 7-3-1 NCHA)



Game 13

Date: Saturday, January 10 • Time: 2 p.m. • Location: St. Peter

Arena: Don Roberts Ice Rink

Live Stats: <https://gustavus.edu/athletics/whky/LIVE/xlive.htm>

Setting The Scene: Following a three week long break from game action, the Gustavus women's hockey team will be back in action this Friday and Saturday, Jan. 9 and 10, in a home-home series with two non-conference teams. Friday, No. 7 ranked Adrian College will come to town for a 5 p.m. matchup and Saturday, the Gusties will take on Lake Forest College at 2 p.m. Both games will be played at Don Roberts Ice Rink. Its game with Adrian will be the second in as many games that Gustavus will face the No. 7 team in the nation, as the Bulldogs bumped UW-Stevens Point, the Gusties' last opponent, from No. 7 to No. 8 in the most recent USCHO rankings. Gustavus enters the weekend with a record of 8-1-2 overall, while Adrian will come to town at 9-0-2 and Lake Forest at 7-3-1.

Quick Rewind: Gustavus should enter its weekend series with confidence, as it defeated two Top 10 teams in its previous two games. On Wednesday, Dec. 10, the Gusties defeated No. 6 UW-River Falls 3-2. The game was highlighted by two Allison Eder-Zdechlik goals, both coming in the third period. Eder-Zdechlik, who was playing in her first game since Nov. 22 after suffering a concussion, was able to score a shorthanded goal just :31 seconds into the third period to even the game at 2-2 and swing the momentum back to Gustavus's side. Twelve minutes later, Eder-Zdechlik found the back of the net again to put the Gusties in front 3-2, which is where the score would remain for the game's final eight minutes. Then, on Dec. 13, the Gusties won their second straight game against a ranked team when they defeated No. 7 UW-Stevens Point 3-1. Gustavus found itself in an early hole when the Pointers scored only :49 seconds into the first period. But as they have done for much of the season, the Gusties saved their best for last and scored three third period goals to secure a big victory going into the long holiday break.

Adrian is most recently coming off a first place finish in their own tournament that was held this past weekend in Adrian, Mich. In their first game on Jan. 2, the Bulldogs defeated Williams College 3-1. After falling behind 1-0 early, Devyn Fitzhenry scored both the game-tying and game-winning goals in the third period to give Adrian its eighth win of the season. The next day, the Bulldogs rolled over Connecticut College 9-0 to earn a first place finish in the tournament. Fitzhenry starred again as she recorded a hat trick in the win, and Bulldog teammate Kelsey Kusch also scored two goals.

Lake Forest has not taken part in game action since Dec. 5-6 when they hosted Finlandia University in a weekend series. The Foresters swept the series by scores of 7-3 and 10-2, respectively. Allie Girard

12 MIAC Championships • 11 NCAA Tournament Appearances

The Match Up

Statistical Comparison

| | | |
|-------------------|--------------------------|---------------------|
| GAC (MIAC) | | AC/LF (NCHA) |
| 3.45 (1st) | Goals For | 4.3/4.1 (1st/2nd) |
| 1.64 (1st) | Goals Against | 1.6/2.0 (1st/2nd) |
| 16.3% (3rd) | Power Play | 38/27% (1st/3rd) |
| 90.6% (3rd) | Penalty Kill | 79%/77% (3rd/5th) |
| +6 (1st) | Special Teams Net | +6/+3 (1st/3rd) |
| 6.4 (9th) | Penalty Minutes | 13.9/7.5 (1st/6th) |

Season averages with MIAC/NCHA ranks (10/7 teams)

The Series

Gustavus vs. Adrian / Lake Forest

| | |
|-----------------|---------------|
| All-Time Record | 1-1 / 4-0 |
| Last Meeting | W 3-0 / W 2-0 |
| Current Streak | W1 / W4 |

Previous Matchups w/ Adrian:

| <u>Date</u> | <u>Location</u> | <u>Result</u> |
|--------------|-----------------|---------------|
| Nov. 8, 2008 | Adrian | W 3-0 |
| Nov. 7, 2008 | Adrian | L 1-2 (OT) |

Previous Matchups w/ LF:

| <u>Date</u> | <u>Location</u> | <u>Result</u> |
|---------------|-----------------|---------------|
| Nov. 9, 2007 | St. Peter | W 2-0 |
| Jan. 13, 2007 | Lake Forest | W 5-2 |
| Jan. 12, 2007 | Lake Forest | W 1-0 (OT) |
| Nov. 5, 2005 | Chicago | W 13-3 |

scored two goals in game one, while Melissa Paluch and Michelle Greenway each scored two goals in game two to help Lake Forest improve its overall record to 7-3-1.

Series Snapshot: Friday's game marks just the third ever meeting between Gustavus and Adrian in women's hockey. To this point, the Gusties are 1-1-0 against the Bulldogs. Saturday's game marks the fifth meeting between Gustavus and Lake Forest and the Gusties have never lost to the Foresters in the two teams' previous four games.

Last Time They Met: The last time Gustavus faced Adrian was on Nov. 8, 2008 when the Gusties took home a 3-0 victory over the Bulldogs. The Gusties last took on Lake Forest on Nov. 9, 2007 and earned a 2-0 win over the Foresters.

About The Bulldogs: Adrian's roster boasts three of the top four scorers in the NCHA in Kelsey Kusch (12G, 8A), Kristin Lewicki (5G, 13A) and Kaylyn Schrocka (6G, 8A). The Bulldogs' roster also contains goalkeeper Jade Walsh, who ranks first in the NCHA in goals against average (1.51), save percentage (.946) and win percentage (.909). As a team, Adrian ranks first in the NCHA in goals per game (4.3) and goals allowed (1.6). The Bulldogs are also known for their penalties however, as the team spends an average of 13.9 minutes per game in the penalty box.

About The Foresters: Lake Forest is led by senior forward Morgan Pope who ranks fourth in the NCHA in points scored with 14 (5G, 9A). Teammates Laura Reckdenwald and Emily Wybo are not far behind Pope, as each have tallied 13 points on the season (6G, 7A and 4G, 9A, respectively). Junior Allie Carter has seen a majority of the minutes between the pipes for the Foresters. In 378:52, the netminder has allowed 14 goals for a goals against average of 2.22 and made 127 saves for a .901 save percentage.

Good To Be Back: Since her return from injury, Allison Eder-Zdechlik has racked up four goals in two games against ranked opponents in UW-River Falls and UW-Stevens Point. The junior scored two of the Gusties' three goals in a 3-2 victory over UW-River Falls, with the game-tie being shorthanded. She also scored the game-tying goal against UW-Stevens Point and added an insurance empty-netter near game's end. For her performance, the MIAC sports information directors voted Eder-Zdechlik MIAC women's hockey player of the week on Dec. 15.

Best Of The Best: Friday's game with Adrian will mark the sixth game already this season in which Gustavus will be facing a ranked team. So far this season, the Gusties are 3-1-1 against ranked teams, with their only loss coming at the hands of then-No. 5 Middlebury College on Nov. 30, with the final score being 3-2.

Boucher Named Gustavus Women's December Student-Athlete Of The Month: Senior defender Courtney Boucher was recently named Gustavus Women's December Student Athlete Of The Month as selected by the Gustavus Sports Information Department. In four December games, Boucher tallied four points on two goals and two assists for the Gusties. In a 7-2 victory over St. Olaf on Dec. 5, Boucher scored a goal and registered an assist. The following day against the Oles, Boucher scored the Gusties' lone goal of the day, which proved pivotal in a 1-1 tie. The Hastings product followed up the St. Olaf series with an assist against No. 6 UW-River Falls on Dec. 10, which marked the fifth straight game that she registered a point. Overall, Boucher tallied a +7 rating during her time on the ice in December. Gustavus went 3-0-1 during the month, including victories over two ranked teams in UW-River Falls and No. 7 UW-Stevens Point.

Gustavus Embarks On 18th Season Of Women's Hockey: The Gustavus women's hockey team is currently in its 18th season. Founded in 1997, the Gusties have attained an all-time record of 375-98-28, which stands as the second winningest program in all of NCAA Division III women's hockey. The Gustie women have won 12 MIAC titles in the 16 years of women's hockey in the conference. Those 12 titles rank first in front of St. Thomas (3) and Augsburg and Saint Mary's, who each have two. Gustavus has also earned the MIAC Playoff crown a total of 11 times, 10 of which have come in the past 11 years and led to 11 NCAA Tournament appearances.

Wearing The "C": In the 17-year history of the Gustavus women's hockey program, 33 players have earned the honor of being a captain. This year, that number stays the same as two of the 2013-14 captains, Carolyn Draayer and Courtney Boucher, will move into their senior years and accept the same role during their 2014-15 campaign.

Home Grown Talent: Of the 24 players on this year's roster, 22 are natives of Minnesota. The only players who reside outside the State of Hockey are Courtney Bethune, who hails from Fort Frances, Ontario, and Allie Lewis, who is a native of Kearney, Nebraska.

Veteran Squad: Despite losing three of its top five scorers from its 2013-14 squad, Gustavus will return 63 percent of its scoring from last season. Sixteen of the Gusties' 24 players are returners, compared to just eight first-year players. Gustavus will also welcome back three of its four 2013-14 All-MIAC honorees, which include Courtney Boucher, Carolyn Draayer and Allison Eder-Zdechlik.

Gusties In The Polls: Gustavus is ranked fifth in the most recent USCHO.com Division III Women's Hockey Poll, which was released Monday. This week marks the 84th consecutive time that the Gusties have been ranked in the USCHO.com poll.



Gustavus Quick Facts

Location: St. Peter, Minnesota
Address: 800 West College Ave.
 St. Peter, MN 56082
Founded: 1862
Enrollment: 2,455
Nickname: Golden Gusties
School Colors: Black and Gold
Home Ice: Don Roberts Ice Rink
NCAA Affiliation: NCAA Division III
Conference: Minnesota Intercollegiate Athletic
President: Rebecca M. Bergman
Athletic Director: Tom Brown
Assistant Athletic Director: Jared Phillips
Athletic Trainer: Troy Banse
Equipment Manager: Jed Friedrich
Sports Information Director: Ethan Armstrong

Gustavus Hockey Quick Facts

2013-14 Record: 17-8-2
2013-14 MIAC Record/Finish: 14-4-0/2nd
All-Time Record: 375-98-28
All-Time MIAC Record: 246-27-12
MIAC Championships: 12
Returns/First-years: 16/8
All-MIAC Honorees Returning/Lost: 3/1

Gustavus Under Head Coach Mike Carroll

| Year | Overall | MIAC | Conference Finish |
|---------------|------------------|------------------|-----------------------|
| 1999-00 | 18-10-1 | 12-5-1 | 3rd |
| 2000-01 | 23-6-1 | 16-2-0 | 1st |
| 2001-02 | 23-5-2 | 18-0-1 | 1st |
| 2002-03 | 14-9-4 | 11-4-3 | 3rd |
| 2003-04 | 22-6-0 | 16-2-0 | 2nd |
| 2004-05 | 25-4-1 | 17-1-0 | 1st |
| 2005-06 | 22-5-2 | 17-0-1 | 1st |
| 2006-07 | 25-3-0 | 17-1-0 | 1st |
| 2007-08 | 25-3-0 | 18-0-0 | 1st |
| 2008-09 | 22-2-4 | 16-0-2 | 1st |
| 2009-10 | 26-6-2 | 14-3-1 | 1st |
| 2010-11 | 22-5-3 | 14-2-2 | 1st |
| 2011-12 | 24-4-2 | 16-1-1 | 1st |
| 2012-13 | 27-2-1 | 18-0-0 | 1st |
| 2013-14 | 17-8-2 | 14-4-0 | 2nd |
| 2014-15 | 8-1-2 | 5-0-1 | |
| Totals | 339-80-28 | 239-25-13 | 11 MIAC Titles |

Around The League

MIAC Standings

| School | Points | MIAC | Overall |
|-----------------|-----------|--------------|--------------|
| Gustavus | 11 | 5-0-1 | 8-1-2 |
| St. Thomas | 9 | 4-1-1 | 5-4-1 |
| Augsburg | 9 | 4-1-1 | 5-4-2 |
| Bethel | 7 | 3-2-1 | 7-3-1 |
| Saint Mary's | 7 | 3-2-1 | 5-5-1 |
| Saint Benedict | 6 | 3-3-0 | 4-6-0 |
| St. Catherine | 5 | 2-3-1 | 3-5-2 |
| Concordia | 4 | 2-4-0 | 3-8-0 |
| Hamline | 1 | 0-5-1 | 2-7-1 |
| St. Olaf | 1 | 0-5-1 | 0-10-1 |

This Weekend in the MIAC

Friday, January 9

Lake Forest at Saint Mary's | 3 p.m.
 UW-Eau Claire at St. Olaf | 5 p.m.
 Augsburg at St. Norbert | 7 p.m.
 St. Catherine at Concordia (Wis.) | 7 p.m.
 UW-Superior at Bethel | 7 p.m.
 St. Thomas at UW-Stevens Point | 7 p.m.
 Concordia at UW-River Falls | 7:05 p.m.

Saturday, January 10

Adrian at Saint Mary's | 2 p.m.
 Augsburg at St. Norbert | 2 p.m.
 St. Catherine at Concordia (Wis.) | 2 p.m.

MIAC Athlete-of-the-Week



Breanna Peterson, Saint Mary's
 Sr., Forward
 Macomb, Mich./Honeybaked

| Opponent | G | A | P |
|-----------------|---|---|---|
| UW-Eau Claire | 0 | 1 | 1 |
| @ UW-Eau Claire | 1 | 3 | 4 |

USCHO.com Div. III Poll

| Rank | School | Overall | Points | Last |
|----------|--------------------------|--------------|-----------|----------|
| 1 | Plattsburgh (15) | 10-0-2 | 150 | 1 |
| 2 | Elmira | 9-1-1 | 134 | 2 |
| 3 | Norwich | 8-1-1 | 116 | 3 |
| 4 | Middlebury | 5-2-1 | 106 | 4 |
| 5 | Gustavus Adolphus | 8-1-2 | 87 | 5 |
| 6 | UW-River Falls | 9-3-0 | 72 | 6 |
| 7 | Adrian | 9-0-2 | 51 | 9 |
| 8 | UW-Stevens Point | 9-4-1 | 43 | 7 |
| 9 | Amherst | 8-1-1 | 32 | 10 |
| 10 | Bowdoin | 6-1-2 | 25 | NR |



Gustavus Record When...

| | |
|---------------------------------|-------|
| At home | 5-0-1 |
| On the road | 3-0-1 |
| Neutral Site | 0-1-0 |
| vs. MIAC opponents | 5-0-1 |
| vs. Non-conference opponents | 3-1-1 |
| vs. Top 10 opponents | 3-1-1 |
| GAC scores 4 or more goals | 3-0-1 |
| GAC scores 3 goals | 4-0-0 |
| GAC scores 2 or fewer goals | 1-1-1 |
| GAC scores first | 5-1-1 |
| Opponent scores first | 3-0-1 |
| GAC leads after 1st period | 3-1-1 |
| Opponent leads after 1st period | 1-0-0 |
| Tied after 1st period | 3-0-1 |
| GAC leads after 2nd period | 4-0-1 |
| Opponent leads after 2nd period | 2-0-1 |
| Tied after 2nd period | 2-1-0 |
| In overtime | 0-1-1 |
| Games decided by one goal | 1-1-0 |
| Games decided by two goals | 4-0-0 |
| Games decided by three goals | 1-0-0 |
| Games decided by four or more | 2-0-0 |
| GAC scores on the power play | 4-0-0 |
| GAC scoreless on the power play | 4-1-2 |
| GAC scores two or more PP goals | 3-0-0 |
| GAC outshoots opponent | 7-1-1 |
| GAC outshot by opponent | 1-0-1 |
| Shots equal | 0-0-0 |
| Tuesday Games | 1-0-0 |
| Wednesday Games | 1-0-0 |
| Friday Games | 3-0-0 |
| Saturday Games | 3-0-2 |
| Sunday Games | 0-1-0 |
| In November | 5-1-1 |
| In December | 3-0-1 |
| In January | 0-0-0 |
| In February | 0-0-0 |
| In March | 0-0-0 |
| Following a win | 5-0-2 |
| Following a loss | 1-0-0 |
| Following a tie | 1-1-0 |
| Night games | 6-0-1 |
| Day games | 2-1-1 |

Who's Hot

Scoring vs. UWR/UWSP

| Player | Games | Goals | Assists | Points | Point Streak |
|-----------------------|-------|-------|---------|--------|--------------|
| Allison Eder-Zdechlik | 2 | 4 | 0 | 4 | 2 |
| Emily Reibert | 2 | 1 | 0 | 1 | 1 |
| Katie Aney | 2 | 1 | 0 | 1 | -- |

Goaltending vs. UWR/UWSP

| Player | Record | Minutes | GA | Saves | Scoreless Str. |
|-----------------|--------|---------|----|-------|----------------|
| Lindsey Hibbard | 2-0-0 | 119:58 | 3 | 42 | 59:14 |

2014-15 Season By The Numbers

| | |
|-------------------------------|--|
| Largest Victory | 5 vs. St. Olaf (12/5/14) |
| Largest Defeat | 1 vs. Middlebury (11/30/14) |
| Largest First Period Lead | 2 vs. Hamline (11/21/14) |
| Largest First Period Deficit | 1 (2x) last: vs. UW-Stevens Point (12/13/14) |
| Largest Second Period Lead | 3 (2x) last: vs. St. Olaf (12/5/14) |
| Largest Second Period Deficit | 2 vs. Plattsburgh (11/29/14) |
| Most Goals Scored | 7 vs. St. Olaf (12/5/14) |
| Fewest Goals Scored | 1 vs. St. Olaf (12/6/14) |
| Most Goals Allowed | 4 vs. Plattsburgh (11/29/14) |
| Fewest Goals Allowed | 0 (2x) Last: vs. Hamline (11/21/14) |
| Largest Lead | 5 vs. St. Olaf (12/5/14) |
| Largest Lead On Road | 5 vs. St. Olaf (12/5/14) |
| Largest Lead At Home | 3 (2x) last: vs. Hamline (11/21/14) |
| Largest Blown Lead | 1 vs. Middlebury (11/30/14) |
| Largest Deficit | 3 vs. Plattsburgh (11/29/14) |
| Largest Deficit On Road | 3 vs. Plattsburgh (11/29/14) |
| Largest Deficit At Home | -- |
| Largest Comeback-Win/Tie | 3 vs. Plattsburgh=Tie (11/29/14) |



Last Time It Happened

COMEBACKS

GAC won when trailing after two periods

December 13, 2014 vs. UW-Stevens Point. Trailed 1-0 early in the third, Gustavus scored three consecutive goals to capture a 3-1 victory.

Opponent won when trailing after two periods

Feb. 1, 2014 vs. Saint Benedict. Blazers trailed 2-1 after two periods, but scored three in the third to capture a 4-2 win.

Overcame 1-goal deficit and won

GAC: December 13, 2014 vs. UW-Stevens Point. Trailed 1-0 early in the third, Gustavus scored three consecutive goals to capture a 3-1 victory.

OPP: Nov. 30 2014 vs. Middlebury. Trailed 1-0 in first period, won 3-2

Overcame 2-goal deficit and won

GAC: Feb. 29, 2013 vs. Bethel. Gusties trailed 2-0 after two, but came back with three goals in the third for a 3-2 win.

OPP: Feb. 1, 2014 vs. Saint Benedict. Blazers trailed 2-0 in second period, but scored four unanswered goals to capture a 4-2 win.

Overcame a 3-goal deficit and won

GAC: March 1, 1998 vs. University of Minnesota Club. Gusties scored one in the second and three in the third to win 4-3.

OPP: Never

OVERTIME GAMES

Won overtime game

GAC: March 1, 2012 vs Bethel. Courtney Boucher scored 6:25 in to overtime to win 1-0 and advance to the MIAC Championship.

OPP: Nov. 30, 2014 vs. Middlebury

Tied overtime game

Nov. 29, 2014 at Plattsburgh (4-4)

SERIES SWEEPS

Swept a 2-game regular season home and away series

GAC: Nov. 21-22, 2014 vs. Hamline. (6-3 Friday in St. Peter, 4-0 Saturday in St. Paul)

OPP: Jan. 31-Feb. 1, 2014 vs. Saint Benedict. (4-2 Friday night in St. Peter, 4-2 again on Saturday in St. Cloud)

Swept a 2-game regular season home series

GAC: Nov. 14-15, 2014 vs. Concordia. (3-1, 2-0)

OPP: Never

Swept a 2-game regular season away series

GAC: Nov. 15-16, 2013 at Concordia. (4-1, 2-0)

OPP: Never. (MIAC Playoffs: March 10-11, 2000 at Augsburg. (4-1, 2-1)

SHUTOUTS

Last Shutout

GAC: Nov. 22, 2014 vs. Hamline 4-0

OPP: Mar. 8, 2014 vs. St. Thomas 2-0

Last Home Shutout

GAC: Nov. 15, 2014 vs. Concordia 2-0

OPP: Feb. 22, 2014 vs. Bethel 1-0.

Last Road Shutout

GAC: Nov. 22, 2014 at Hamline 4-0.

OPP: Mar. 8, 2014 vs. St. Thomas 2-0

Scoreless Ties (2 in program history)

Jan. 14, 2010 vs. Trinity (Conn.)

Feb. 17, 2009 at UW-Stevens Point

EXTRA ATTACKER GOALS

GAC: Nov. 30, 2014 vs. Middlebury. Lydia Wagner scored w/ 39 sec. left

OPP: Jan. 9, 2005 at UW-River Falls. Gusties won 6-4.

SHORTHANDED GOALS

Scored a shorthanded goal

GAC: December 10, 2014 vs. UW-River Falls. Allison Eder-Zdechlik scored shorthanded to tie the game in the third period of a 3-2 victory.

OPP: Jan. 10, 2014 at UW-Stevens Point. Cassandra Salmen scored shorthanded in the third period of a 5-2 win for the Pointers.

Scored two shorthanded goals

GAC: Nov. 22, 2008 at St. Olaf. Melissa Mackley scored two short-

handed goals in the third period. Gusties won 4-2.

OPP: Never

EMPTY NET GOALS

GAC: Dec. 13, 2014 vs. UW-Stevens Point. Allison Eder-Zdechlik scored EN at 19:46 of a 3-1 win for the Gusties in St. Peter.

OPP: Feb. 15, 2014 vs. St. Thomas. Karina Marette scored EN at 19:47 of a 3-1 Tommie win in Mendota Heights.

TEAM GOALS IN A PERIOD

Team scored 5 or more goals in a period

GAC: Feb. 23, 2013 vs. Saint Benedict. The Gusties scored six goals in the second period on their way to an 8-2 victory in St. Peter.

OPP: Dec. 3, 1998 at the University of Minnesota (Mariucci Arena.

Gophers scored five goals in the first period and won 8-1.

PENALTY SHOTS

Scored on a penalty shot

GAC: Never.

OPP: March 19, 2011 vs. Middlebury (NCAA 3rd Place Game,

Rochester, N.Y.). Penalty shot goal scored after Lindsey Hjelm checking penalty in the second period. Middlebury won 5-0.

PENALTIES

Not penalized

GAC: Dec. 1, 2012 at Augsburg. GAC won 3-1.

OPP: Dec. 2, 2000 at St. Catherine. St. Kate's won 4-3.

Neither team was penalized

Jan. 30, 1998 at Saint Mary's. Gusties won 6-2.

HAT TRICKS

Last individual 3-goal game

GAC: Jan. 26, 2013 vs. Concordia. Lindsey Hjelm scored three goals (all even) in a 5-1 Gustavus win in St. Peter.

OPP: Jan. 10, 2014 at UW-Stevens Point. Cassandra Salmen scored three goals in the third period of a 5-2 Pointer win.

Last individual 4-goal game

GAC: Dec. 2, 2011 at Augsburg. Allie Schwab scored three PP goals and an even goal in a 9-0 shutout.

OPP: Never.

All goals scored by one player (3+ Goals)

GAC: Never.

OPP: Dec. 2, 2006 at Hamline. Melanie Levielle scored all three goals in a 4-3 loss.

SHOTS ON GOAL

Fewer than 15 shots in a game

GAC: Dec. 3, 1998 at the University of Minnesota, 11 shots. Minnesota won 8-1.

OPP: Dec. 6, 2014 vs. St. Olaf, 13 shots. Gustavus tied 1-1.

Fewer than 20 shots in a game

GAC: Feb. 14, 2014 vs. St. Thomas, 17 shots. Gustavus won 5-1.

OPP: Dec. 13, 2014 vs. UW-Stevens Point, 16 shots. Gustavus won 3-1.

40 or more shots in a game

GAC: Dec. 13, 2014 vs. UW-Stevens Point, 42 shots. Gustavus won 3-1.

OPP: Nov. 29, 2014 at Plattsburgh, 42 shots. Tied 4-4.

50 or more shots in a game

GAC: Feb. 16, 2013 vs. St. Olaf, 51 shots. Gustavus won 6-2.

OPP: Nov. 23, 1998 vs. the University of Minnesota: 51 shots. Minnesota won 6-0.

60 or more shots in a game

GAC: Feb. 15, 2013 at St. Olaf, 61 shots. Gustavus won 7-4.

OPP: Feb. 5, 1998 at Boston College, 65 shots. BC won 10-1.

SINGLE GAME POINTS

Player had four points in a game

GAC: Dec. 5, 2014 at St. Olaf. Erica Power scored two goals, two assists. Diana Draayer scored one goal, three assists in same game.

OPP: Mar. 18, 2011 vs. Norwich (NCAA Semifinals). Julie Fortier scored three goals with an assist in a 5-4 Norwich victory.

Player had five points in a game

GAC: Dec. 2, 2011 at Augsburg. Allie Schwab scored three PP goals and an even goal with an assist in a 9-0 shutout.

OPP: Mar. 18, 2005 vs. Middlebury. (NCAA Semifinals) Lorna Grifis scored two goals with three assists in a 7-3 Middlebury win.

Player had six or more points in a game

GAC: Feb. 11, 2005 at St. Catherine. Andrea Peterson scored two goals with six assists in a 13-0 win. (Most individual points in a game in program history)

OPP: Jan. 30, 1999 at Middlebury. Michelle Labbe scored three goals with three assists in a 8-0 Middlebury win.





Carroll At A Glance

Hometown

• Edina, Minnesota

Education

• Bachelor's Degree: Recreation, Parks, and Leisure Services (Minn. State, Mankato '82)

Family

• Wife: Terri
• Children: Matt and Mike

Coaching

- 1983-84 – Assistant Coach, University of St. Thomas
- 1984-85 – Assistant Coach, Fergus Falls High School
- 1986-87 – Head Coach, Fergus Falls Community College
- 1990-99 – Head Coach, Mankato West High School
- 1999-Present – Head Coach, Gustavus Adolphus College

Years At Gustavus: 15

All-time Record: 339-79-27

All-time MIAC Record: 239-25-13

MIAC Titles: 11

MIAC Playoff Titles: 11

NCAA Tournaments: 11

NCAA Tournament Record: 8-16-0

Final Fours: 7

Most Wins In A Season: 27 (2012-13)

Fewest Wins In A Season: 14 (2002-03)

***All-time winningest coach in Gustavus women's hockey history.

Head Coach Mike Carroll

Mike Carroll is in his 16th season as the women's head hockey coach at Gustavus. Within his tenure behind the Gustie bench, Carroll has turned Gustavus women's hockey into one of the most successful programs in NCAA Division III. He has compiled an overall record of 339-79-27 in 15 seasons and has the most coaching victories in the history of the program.

Last season, the Gustavus women's hockey team saw its reign atop the Minnesota Intercollegiate Athletic Conference (MIAC) come to an end. The Gusties finished second in the final conference standings with 28 points at 14-4-0, ending their streak of consecutive MIAC Championships at nine. After defeating Bethel 3-2 in the MIAC Playoff Semifinals, Gustavus's season concluded with a 2-0 loss to regular season champion St. Thomas in the MIAC Playoff Championship. The postseason defeat suffered to the Tommies ended Head Coach Mike Carroll's run of 10 consecutive MIAC Playoff titles and trips to the NCAA Tournament. The Gusties finished the year with an overall record of 17-8-2.

Carroll has directed the Gusties to 11 MIAC regular season titles (2000-01, 2001-02, 2004-05, 2005-06, 2006-07, 2007-08, 2008-09, 2009-10, 2010-11, 2011-12, 2012-13) and has been named the MIAC Coach-of-the-Year six times (2001-02, 2003-04, 2004-05, 2005-06, 2010-11, 2012-13). In addition to coaching 34 players who have earned All-Conference honors 59 times, he has coached five MIAC Players-of-the-Year in Sarah Garrison, Andrea Peterson, Stefanie Ubl, Allie Schwab, Lindsey Hjelm. Carroll has also worked with 13 players who have earned AHCA All-America distinction 21 times and two American Hockey Coaches Association Players-of-the-Year, including four-time MIAC Player-of-the-Year and four-time All-American Andrea Peterson.

Prior to coming to Gustavus, Carroll served as the head boys' hockey coach at Mankato West High School from 1991 to 1999. Carroll's college coaching resume included a stint as head men's hockey coach at Fergus Falls Community College from 1986 to 1987 as well as a season as the assistant men's coach at the University of St. Thomas in 1983.

Carroll, an Edina, Minnesota native, competed in hockey and baseball at Mankato State. After graduating with a degree in municipal recreation in 1982, Carroll played professional baseball in the Montreal Expos organization for two years.

In addition to his hockey coaching duties at Gustavus, Carroll is also the head coach of the Golden Gustie baseball team. Mike and his wife, Terri, live in Mankato and have two sons, Matt and Mike.

2014-15 Roster Breakdown

Returners (16)

Courtney Bethune
 Courtney Boucher
 Marissa Brandt
 Carolyn Draayer
 Allison Eder-Zdechlik
 Emily Gustafson
 Hannah Heacox
 Lindsey Hibbard
 Callie Johnson
 Leah Johnson
 Amanda Koep
 Allie Lewis
 Keri Pickel
 Courtney Potter
 Emily Reibert
 Lydia Wagner

Newcomers (8)

Katie Aney
 Diana Draayer
 Katy Fuller
 Laura Johnson
 Kaitlyn Klein
 Erica Power
 Ashley Ritten
 Rachel Skoglund

By Class

Seniors (5)

Courtney Boucher
 Marissa Brandt
 Carolyn Draayer
 Leah Johnson
 Keri Pickel

Juniors (4)

Allison Eder-Zdechlik
 Lindsey Hibbard
 Amanda Koep
 Emily Reibert

Sophomores (7)

Courtney Bethune
 Emily Gustafson
 Hannah Heacox
 Callie Johnson
 Allie Lewis
 Courtney Potter
 Lydia Wagner

First-Years (8)

Katie Aney
 Diana Draayer
 Katy Fuller
 Laura Johnson
 Kaitlyn Klein
 Erica Power
 Ashley Ritten
 Rachel Skoglund

2014-15 Numerical Roster

| No. | Name | Yr. | Pos. | Hgt. | Hometown/High School |
|-----|-----------------------|-----|------|------|--|
| 1 | Lindsey Hibbard | Jr. | G | 5-6 | Princeton, Minn./Princeton |
| 2 | Courtney Bethune | So. | D | 5-8 | Fort Frances, Ont./Warroad |
| 3 | Emily Reibert | Jr. | F | 5-5 | Inver Grove Heights, Minn./South St. Paul |
| 4 | Diana Draayer | Fy. | F | 5-5 | Deephaven, Minn./Minnetonka |
| 5 | Rachel Skoglund | Fy. | D | 5-2 | Forest Lake, Minn./Forest Lake |
| 6 | Emily Gustafson | So. | F | 5-1 | Esko, Minn./Esko |
| 7 | Lydia Wagner | So. | D | 5-7 | Zumbrota, Minn./Zumbrota-Mazeppa |
| 8 | Allison Eder-Zdechlik | Jr. | F | 5-4 | Stillwater, Minn./Stillwater |
| 9 | Erica Power | Fy. | F | 5-6 | Lakeville, Minn./Apple Valley |
| 10 | Courtney Boucher | Sr. | F/D | 5-7 | Hastings, Minn./Hastings |
| 11 | Keri Pickel | Sr. | F | 5-2 | Rochester, Minn./Mayo |
| 12 | Hannah Heacox | So. | F | 5-3 | Stillwater, Minn./Stillwater |
| 13 | Katie Aney | Fy. | F | 5-8 | Rochester, Minn./Century |
| 14 | Katy Fuller | Fy. | F | 5-5 | Minneapolis, Minn./Southwest |
| 15 | Leah Johnson | Sr. | F | 5-4 | Chanhassen, Minn./Chaska |
| 17 | Callie Johnson | So. | F | 5-7 | Detroit Lakes, Minn./Detroit Lakes |
| 18 | Carolyn Draayer | Sr. | F | 5-6 | Deephaven, Minn./Minnetonka |
| 19 | Allie Lewis | So. | F | 5-3 | Kearney, Neb./Shattuck-St. Mary's |
| 20 | Kaitlyn Klein | Fy. | F | 5-6 | Plymouth, Minn./Wayzata |
| 22 | Marissa Brandt | Sr. | F/D | 5-6 | Vadnais Heights, Minn./Hill-Murray |
| 23 | Laura Johnson | Fy. | D | 5-5 | Chanhassen, Minn./Chanhassen |
| 24 | Courtney Potter | So. | D | 5-2 | Dayton, Minn./Champlin Park |
| 33 | Ashley Ritten | Fy. | G | 5-6 | Robbinsdale, Minn./Robbinsdale Armstrong |
| 35 | Amanda Koep | Jr. | G | 5-5 | St. Michael, Minn./St. Michael-Albertville |

Head Coach: Mike Carroll (16th season)
 Assistant Coaches: Amanda Trunzo, Steve Carroll

Alphabetical Roster/Pronunciation Guide

| NO. | NAME | Pronunciation |
|-----|------------------------|-----------------|
| 13 | Aney, Katie | |
| 2 | Bethune, Courtney | beth-OON |
| 10 | Boucher, Courtney | BOO-shay |
| 22 | Brandt, Marissa | |
| 18 | Draayer, Carolyn | DRAY-er |
| 4 | Draayer, Diana | DRAY-er |
| 8 | Eder-Zdechlik, Allison | ee-der-ZED-lick |
| 14 | Fuller, Katy | |
| 6 | Gustafson, Emily | GUST-uhf-son |
| 12 | Heacox, Hannah | HEE-cox |
| 1 | Hibbard, Lindsey | |
| 23 | Johnson, Laura | |
| 15 | Johnson, Leah | |
| 17 | Johnson, Callie | |
| 20 | Klein, Kaitlyn | |
| 35 | Koep, Amanda | COPE |
| 19 | Lewis, Allie | |
| 11 | Pickel, Keri | |
| 9 | Power, Erica | |
| 24 | Potter, Courtney | |
| 3 | Reibert, Emily | RYE-ber |
| 33 | Ritten, Ashley | |
| 5 | Skoglund, Rachel | SKOHG-lund |
| 7 | Wagner, Lydia | |

Player Profiles



#1 Lindsey Hibbard
Jr., Goaltender
Princeton, Minn./Princeton

Season Numbers

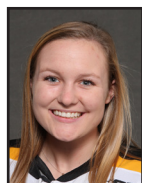
| GP | GAA | Save Pct. | Record |
|----|------|-----------|--------|
| 11 | 1.43 | .936 | 7-1-2 |



#2 Courtney Bethune
So., Defender
Fort Frances, Ont./Warroad

Season Numbers

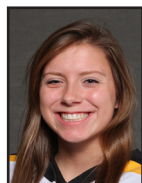
| GP | Goals | Assists | Points |
|----|-------|---------|--------|
| 11 | 0 | 0 | 0 |



#3 Emily Reibert
Jr., Forward
Inver Grove Heights, Minn./South St. Paul

Season Numbers

| GP | Goals | Assists | Points |
|----|-------|---------|--------|
| 10 | 5 | 1 | 6 |



#4 Diana Draayer
Fy., Forward
Deephaven, Minn./Minnetonka

Season Numbers

| GP | Goals | Assists | Points |
|----|-------|---------|--------|
| 11 | 2 | 8 | 10 |



#5 Rachel Skoglund
Fy., Defender
Forest Lake, Minn./Forest Lake

Season Numbers

| GP | Goals | Assists | Points |
|----|-------|---------|--------|
| 10 | 1 | 2 | 3 |



#6 Emily Gustafson
So., Forward
Esko, Minn./Esko

Season Numbers

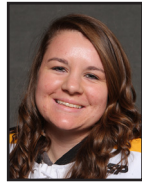
| GP | Goals | Assists | Points |
|----|-------|---------|--------|
| 11 | 0 | 2 | 2 |



#7 Lydia Wagner
So., Defender
Zumbrota, Minn./Zumbrota-Mazeppa

Season Numbers

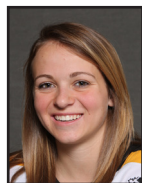
| GP | Goals | Assists | Points |
|----|-------|---------|--------|
| 11 | 2 | 2 | 4 |



#8 Allison Eder-Zdechlik
Jr., Forward
Stillwater, Minn./Stillwater

Season Numbers

| GP | Goals | Assists | Points |
|----|-------|---------|--------|
| 7 | 6 | 1 | 7 |



#9 Erica Power
Fy., Forward
Lakeville, Minn./Apple Valley

Season Numbers

| GP | Goals | Assists | Points |
|----|-------|---------|--------|
| 11 | 5 | 9 | 14 |

Player Profiles



#10 Courtney Boucher
Sr., Forward/Defender
Hastings, Minn./Hastings

Season Numbers

| GP | Goals | Assists | Points |
|----|-------|---------|--------|
| 11 | 2 | 5 | 7 |



#11 Keri Pickel
Sr., Forward
Rochester, Minn./Mayo

Season Numbers

| GP | Goals | Assists | Points |
|----|-------|---------|--------|
| 11 | 1 | 1 | 2 |



#12 Hannah Heacox
So., Forward
Stillwater, Minn./Stillwater

Season Numbers

| GP | Goals | Assists | Points |
|----|-------|---------|--------|
| 2 | 0 | 0 | 0 |



#13 Katie Aney
Fy., Forward
Rochester, Minn./Century

Season Numbers

| GP | Goals | Assists | Points |
|----|-------|---------|--------|
| 11 | 3 | 0 | 3 |



#14 Katy Fuller
Fy., Forward
Minneapolis, Minn./Southwest

Season Numbers

| GP | Goals | Assists | Points |
|----|-------|---------|--------|
| 11 | 2 | 2 | 4 |



#15 Leah Johnson
Sr., Forward
Chanhassen, Minn./Chanhassen

Season Numbers

| GP | Goals | Assists | Points |
|----|-------|---------|--------|
| 11 | 0 | 2 | 2 |



#17 Callie Johnson
So., Forward
Detroit Lakes, Minn./Detroit Lakes

Season Numbers

| GP | Goals | Assists | Points |
|----|-------|---------|--------|
| 3 | 0 | 1 | 1 |



#18 Carolyn Draayer
Sr., Forward
Deephaven, Minn./Minnetonka

Season Numbers

| GP | Goals | Assists | Points |
|----|-------|---------|--------|
| 11 | 5 | 2 | 7 |



#19 Allie Lewis
So., Forward
Kearney, Neb./Shattuck-St. Mary's

Season Numbers

| GP | Goals | Assists | Points |
|----|-------|---------|--------|
| 11 | 0 | 1 | 1 |



Player Profiles



#20 Kaitlyn Klein
 Fy., Forward
 Plymouth, Minn./Wayzata

Season Numbers

| GP | Goals | Assists | Points |
|----|-------|---------|--------|
| 11 | 3 | 3 | 6 |



#22 Marissa Brandt
 Sr., Forward/Defender
 Vadnais Heights, Minn./Hill-Murray

Season Numbers

| GP | Goals | Assists | Points |
|----|-------|---------|--------|
| 11 | 1 | 1 | 2 |



#23 Laura Johnson
 Fy., Defender
 Chanhassen, Minn./Chanhassen

Season Numbers

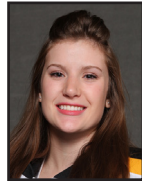
| GP | Goals | Assists | Points |
|----|-------|---------|--------|
| 8 | 0 | 1 | 1 |



#24 Courtney Potter
 So., Defender
 Dayton, Minn./Champlin Park

Season Numbers

| GP | Goals | Assists | Points |
|----|-------|---------|--------|
| 4 | 0 | 0 | 0 |



#33 Ashley Ritten
 Fy., Goaltender
 Robbinsdale, Minn./Robbinsdale Armstrong

Season Numbers

| GP | GAA | Save Pct. | Record |
|----|-----|-----------|--------|
| 0 | --- | --- | 0-0-0 |



#35 Amanda Koep
 Jr., Goaltender
 St. Michael, Minn./St. Michael-Albertville

Season Numbers

| GP | GAA | Save Pct. | Record |
|----|------|-----------|--------|
| 1 | 4.41 | .571 | 1-0-0 |

Gustavus Adolphus Hockey
Gustavus Adolphus Overall Team Statistics (as of Jan 08, 2015)
All games

Overall: 8-1-2 Conf: 5-0-1 Home: 5-0-1 Away: 3-0-1 Neut: 0-1-0

| TEAM STATISTICS | GAC | OPP |
|------------------------|------------|------------|
| SHOT STATISTICS | | |
| Goals-Shot attempts | 38-406 | 18-241 |
| Shot pct. | .094 | .075 |
| Goals/Game | 3.5 | 1.6 |
| Shots/Game | 36.9 | 21.9 |
| Assists | 44 | 25 |
| POWER PLAYS | | |
| Goals-Power Plays | 8-47 | 3-27 |
| Conversion Percent | .170 | .111 |
| Shot Attempts | 100 | 39 |
| Shot Percent | .080 | .077 |
| SHORT-HANDED | | |
| Goals-Shot attempts | 1-11 | 0-15 |
| Shot Percent | .091 | .000 |
| GOAL BREAKDOWN | | |
| Total Goals | 38 | 18 |
| Power Play | 8 | 3 |
| Short-handed | 1 | 0 |
| Empty net | 1 | 0 |
| Penalty | 0 | 0 |
| Unassisted | 8 | 2 |
| Overtime | 0 | 1 |
| Shootout | 0 | 0 |
| Delayed Penalty | 0 | 0 |
| PENALTIES | | |
| Number | 35 | 51 |
| Minutes | 70 | 102 |
| Penalties/Game | 3.2 | 4.6 |
| Pen minutes/Game | 6.4 | 9.3 |
| Minor | 35 | 51 |
| Major | 0 | 0 |
| 10-minute Misconduct | 0 | 0 |
| Game Misconduct | 0 | 0 |
| Gross Misconduct | 0 | 0 |
| Match | 0 | 0 |
| FACEOFFS (W-L) | 325-200 | 200-325 |
| Faceoff W-L Pct. | .619 | .381 |
| SHOOTOUTS (Made-Att) | 1-4 | 2-4 |
| ATTENDANCE | | |
| Total | 644 | 891 |
| Dates/Avg Per Date | 6/107 | 4/223 |
| Neutral Site #/Avg | 1/120 | |

| Goals by Period | 1st | 2nd | 3rd | OT | Total |
|------------------------|------------|------------|------------|-----------|--------------|
| Gustavus Adolphus | 8 | 11 | 19 | 0 | 38 |
| Opponents | 4 | 8 | 5 | 1 | 18 |

| Shots by Period | 1st | 2nd | 3rd | OT | Total |
|------------------------|------------|------------|------------|-----------|--------------|
| Gustavus Adolphus | 134 | 132 | 135 | 5 | 406 |
| Opponents | 81 | 87 | 69 | 4 | 241 |

| Saves by Period | 1st | 2nd | 3rd | OT | Total |
|------------------------|------------|------------|------------|-----------|--------------|
| Gustavus Adolphus | 77 | 79 | 64 | 3 | 223 |
| Opponents | 126 | 121 | 115 | 5 | 367 |



Gustavus Adolphus Hockey
Gustavus Adolphus Category Leaders (as of Jan 08, 2015)
All games

| ## | Points | GP | G | A | Pts | Sh |
|----|------------------|----|---|---|-----|----|
| 9 | Erica Power | 11 | 5 | 9 | 14 | 44 |
| 4 | Diana Draayer | 11 | 2 | 8 | 10 | 28 |
| 8 | A. Eder-Zdechlik | 7 | 6 | 1 | 7 | 32 |
| 18 | Carolyn Draayer | 11 | 5 | 2 | 7 | 56 |
| 10 | Courtney Boucher | 11 | 2 | 5 | 7 | 40 |
| 3 | Emily Reibert | 10 | 5 | 1 | 6 | 22 |
| 20 | Kaitlyn Klein | 11 | 3 | 3 | 6 | 20 |
| 14 | Katy Fuller | 11 | 2 | 2 | 4 | 17 |
| 7 | Lydia Wagner | 11 | 2 | 2 | 4 | 22 |
| 13 | Katie Aney | 11 | 3 | 0 | 3 | 23 |

| ## | Goals | GP | G | A | Pts | Sh |
|----|------------------|----|---|---|-----|----|
| 8 | A. Eder-Zdechlik | 7 | 6 | 1 | 7 | 32 |
| 9 | Erica Power | 11 | 5 | 9 | 14 | 44 |
| 18 | Carolyn Draayer | 11 | 5 | 2 | 7 | 56 |
| 3 | Emily Reibert | 10 | 5 | 1 | 6 | 22 |
| 20 | Kaitlyn Klein | 11 | 3 | 3 | 6 | 20 |
| 13 | Katie Aney | 11 | 3 | 0 | 3 | 23 |
| 4 | Diana Draayer | 11 | 2 | 8 | 10 | 28 |
| 10 | Courtney Boucher | 11 | 2 | 5 | 7 | 40 |
| 14 | Katy Fuller | 11 | 2 | 2 | 4 | 17 |
| 7 | Lydia Wagner | 11 | 2 | 2 | 4 | 22 |

| ## | Power-Play Goals | GP | PPG |
|----|------------------|----|-----|
| 18 | Carolyn Draayer | 11 | 2 |

| ## | Short-Handed Goals | GP | SHG |
|----|--------------------|----|-----|
| 8 | A. Eder-Zdechlik | 7 | 1 |

| ## | Game-Winning Goals | GP | GWG |
|----|--------------------|----|-----|
| 18 | Carolyn Draayer | 11 | 2 |

| ## | Plus/Minus | GP | +/- |
|----|------------------|----|-----|
| 10 | Courtney Boucher | 11 | +10 |
| 9 | Erica Power | 11 | +10 |
| 8 | A. Eder-Zdechlik | 7 | +9 |
| 5 | Rachel Skoglund | 10 | +7 |
| 2 | Courtney Bethune | 11 | +7 |
| 20 | Kaitlyn Klein | 11 | +7 |
| 23 | Laura Johnson | 8 | +5 |
| 4 | Diana Draayer | 11 | +4 |
| 3 | Emily Reibert | 10 | +4 |
| 18 | Carolyn Draayer | 11 | +2 |

| ## | Assists | GP | G | A | Pts | Sh |
|----|------------------|----|---|---|-----|----|
| 9 | Erica Power | 11 | 5 | 9 | 14 | 44 |
| 4 | Diana Draayer | 11 | 2 | 8 | 10 | 28 |
| 10 | Courtney Boucher | 11 | 2 | 5 | 7 | 40 |
| 20 | Kaitlyn Klein | 11 | 3 | 3 | 6 | 20 |
| 18 | Carolyn Draayer | 11 | 5 | 2 | 7 | 56 |
| 14 | Katy Fuller | 11 | 2 | 2 | 4 | 17 |
| 7 | Lydia Wagner | 11 | 2 | 2 | 4 | 22 |
| 5 | Rachel Skoglund | 10 | 1 | 2 | 3 | 18 |
| 6 | Emily Gustafson | 11 | 0 | 2 | 2 | 11 |
| 15 | Leah Johnson | 11 | 0 | 2 | 2 | 6 |

| ## | Shots | GP | G | A | Pts | Sh | Sh% |
|----|------------------|----|---|---|-----|----|------|
| 18 | Carolyn Draayer | 11 | 5 | 2 | 7 | 56 | .089 |
| 9 | Erica Power | 11 | 5 | 9 | 14 | 44 | .114 |
| 10 | Courtney Boucher | 11 | 2 | 5 | 7 | 40 | .050 |
| 8 | A. Eder-Zdechlik | 7 | 6 | 1 | 7 | 32 | .188 |
| 4 | Diana Draayer | 11 | 2 | 8 | 10 | 28 | .071 |
| 13 | Katie Aney | 11 | 3 | 0 | 3 | 23 | .130 |
| 3 | Emily Reibert | 10 | 5 | 1 | 6 | 22 | .227 |
| 7 | Lydia Wagner | 11 | 2 | 2 | 4 | 22 | .091 |
| 20 | Kaitlyn Klein | 11 | 3 | 3 | 6 | 20 | .150 |
| 5 | Rachel Skoglund | 10 | 1 | 2 | 3 | 18 | .056 |

| ## | Shot Pct. | GP | G | A | Pts | Sh | Sh% |
|----|------------------|----|---|---|-----|----|------|
| 3 | Emily Reibert | 10 | 5 | 1 | 6 | 22 | .227 |
| 8 | A. Eder-Zdechlik | 7 | 6 | 1 | 7 | 32 | .188 |
| 20 | Kaitlyn Klein | 11 | 3 | 3 | 6 | 20 | .150 |
| 13 | Katie Aney | 11 | 3 | 0 | 3 | 23 | .130 |
| 22 | Marissa Brandt | 11 | 1 | 1 | 2 | 8 | .125 |
| 14 | Katy Fuller | 11 | 2 | 2 | 4 | 17 | .118 |
| 9 | Erica Power | 11 | 5 | 9 | 14 | 44 | .114 |
| 7 | Lydia Wagner | 11 | 2 | 2 | 4 | 22 | .091 |
| 18 | Carolyn Draayer | 11 | 5 | 2 | 7 | 56 | .089 |
| 4 | Diana Draayer | 11 | 2 | 8 | 10 | 28 | .071 |

| ## | Penalties | GP | Pen | Min |
|----|------------------|----|-----|-----|
| 23 | Laura Johnson | 8 | 4 | 8 |
| 10 | Courtney Boucher | 11 | 3 | 6 |
| 13 | Katie Aney | 11 | 3 | 6 |
| 4 | Diana Draayer | 11 | 3 | 6 |
| 7 | Lydia Wagner | 11 | 3 | 6 |
| 3 | Emily Reibert | 10 | 3 | 6 |
| 15 | Leah Johnson | 11 | 2 | 4 |
| 5 | Rachel Skoglund | 10 | 2 | 4 |
| 6 | Emily Gustafson | 11 | 2 | 4 |
| 18 | Carolyn Draayer | 11 | 2 | 4 |

| ## | Penalty Minutes | GP | Pen | Min |
|----|------------------|----|-----|-----|
| 23 | Laura Johnson | 8 | 4 | 8 |
| 7 | Lydia Wagner | 11 | 3 | 6 |
| 4 | Diana Draayer | 11 | 3 | 6 |
| 13 | Katie Aney | 11 | 3 | 6 |
| 10 | Courtney Boucher | 11 | 3 | 6 |
| 3 | Emily Reibert | 10 | 3 | 6 |
| 15 | Leah Johnson | 11 | 2 | 4 |
| 5 | Rachel Skoglund | 10 | 2 | 4 |
| 6 | Emily Gustafson | 11 | 2 | 4 |
| 18 | Carolyn Draayer | 11 | 2 | 4 |

Gustavus Adolphus Hockey
Gustavus Adolphus Combined Team Statistics (as of Jan 08, 2015)
All games

| Date | Opponent | Score | Att. |
|----------|-----------------------|---------|------|
| Nov 04 | #9 UW-SUPERIOR | w 3-1 | 123 |
| * Nov 14 | CONCORDIA COLLEGE | w 3-1 | 111 |
| * Nov 15 | CONCORDIA COLLEGE | w 2-0 | 73 |
| * Nov 21 | HAMLIN UNIVERSITY | w 6-3 | 143 |
| * Nov 22 | at Hamline University | w 4-0 | 164 |
| Nov 29 | at Plattsburgh State | Tot 4-4 | 381 |
| Nov 30 | vs #5 Middlebury | Lot 2-3 | 120 |
| * Dec 05 | at St. Olaf | w 7-2 | 163 |
| * Dec 06 | ST. OLAF | Tot 1-1 | 97 |
| Dec 10 | at #6 UW-River Falls | w 3-2 | 183 |
| Dec 13 | UW-STEVENS POINT | w 3-1 | 97 |

| TEAM STATISTICS | GAC | OPP |
|------------------------|---------|---------|
| SHOT STATISTICS | | |
| Goals-Shot attempts | 38-406 | 18-241 |
| Shot pct. | .094 | .075 |
| Goals/Game | 3.5 | 1.6 |
| Shots/Game | 36.9 | 21.9 |
| POWER PLAYS | | |
| Goals-Power Plays | 8-47 | 3-27 |
| Conversion Percent | .170 | .111 |
| Shot Attempts | 100 | 39 |
| Shot Percent | .080 | .077 |
| SHORT-HANDED | | |
| Goals-Shot attempts | 1-11 | 0-15 |
| Shot Percent | .091 | .000 |
| GOAL BREAKDOWN | | |
| Power Play | 8 | 3 |
| Short-handed | 1 | 0 |
| Empty net | 1 | 0 |
| Penalty | 0 | 0 |
| Unassisted | 8 | 2 |
| Overtime | 0 | 1 |
| Shootout | 0 | 0 |
| Delayed Penalty | 0 | 0 |
| PENALTIES | | |
| Number | 35 | 51 |
| Minutes | 70 | 102 |
| Penalties/Game | 3.2 | 4.6 |
| Pen minutes/Game | 6.4 | 9.3 |
| FACEOFFS (W-L) | 325-200 | 200-325 |
| Faceoff W-L Pct. | .619 | .381 |
| SHOOTOUTS (Made-Att) | 1-4 | 2-4 |

| Record: | Overall | Home | Away | Neutral |
|----------------|---------|-------|-------|---------|
| ALL GAMES | 8-1-2 | 5-0-1 | 3-0-1 | 0-1-0 |
| CONFERENCE | 5-0-1 | 3-0-1 | 2-0-0 | 0-0-0 |
| NON-CONFERENCE | 3-1-1 | 2-0-0 | 1-0-1 | 0-1-0 |

| # | Player | gp | g | a | pts | sh | sh% | pen-min | pp | sh |
|----|------------------|----|----|----|-----|-----|------|---------|----|----|
| 9 | Erica Power | 11 | 5 | 9 | 14 | 44 | .114 | 1-2 | 1 | 0 |
| 4 | Diana Draayer | 11 | 2 | 8 | 10 | 28 | .071 | 3-6 | 1 | 0 |
| 8 | A. Eder-Zdechlik | 7 | 6 | 1 | 7 | 32 | .188 | 1-2 | 0 | 1 |
| 18 | Carolyn Draayer | 11 | 5 | 2 | 7 | 56 | .089 | 2-4 | 2 | 0 |
| 10 | Courtney Boucher | 11 | 2 | 5 | 7 | 40 | .050 | 3-6 | 0 | 0 |
| 3 | Emily Reibert | 10 | 5 | 1 | 6 | 22 | .227 | 3-6 | 1 | 0 |
| 20 | Kaitlyn Klein | 11 | 3 | 3 | 6 | 20 | .150 | 0-0 | 0 | 0 |
| 14 | Katy Fuller | 11 | 2 | 2 | 4 | 17 | .118 | 1-2 | 0 | 0 |
| 7 | Lydia Wagner | 11 | 2 | 2 | 4 | 22 | .091 | 3-6 | 1 | 0 |
| 13 | Katie Aney | 11 | 3 | 0 | 3 | 23 | .130 | 3-6 | 1 | 0 |
| 5 | Rachel Skoglund | 10 | 1 | 2 | 3 | 18 | .056 | 2-4 | 0 | 0 |
| 22 | Marissa Brandt | 11 | 1 | 1 | 2 | 8 | .125 | 1-2 | 1 | 0 |
| 11 | Keri Pickel | 11 | 1 | 1 | 2 | 17 | .059 | 1-2 | 0 | 0 |
| 6 | Emily Gustafson | 11 | 0 | 2 | 2 | 11 | .000 | 2-4 | 0 | 0 |
| 15 | Leah Johnson | 11 | 0 | 2 | 2 | 6 | .000 | 2-4 | 0 | 0 |
| 17 | Callie Johnson | 3 | 0 | 1 | 1 | 1 | .000 | 0-0 | 0 | 0 |
| 23 | Laura Johnson | 8 | 0 | 1 | 1 | 13 | .000 | 4-8 | 0 | 0 |
| 19 | Allie Lewis | 11 | 0 | 1 | 1 | 8 | .000 | 0-0 | 0 | 0 |
| 2 | Courtney Bethune | 11 | 0 | 0 | 0 | 12 | .000 | 2-4 | 0 | 0 |
| 12 | Hannah Heacox | 2 | 0 | 0 | 0 | 4 | .000 | 0-0 | 0 | 0 |
| 24 | Courtney Potter | 4 | 0 | 0 | 0 | 4 | .000 | 0-0 | 0 | 0 |
| TM | TEAM | 2 | 0 | 0 | 0 | 0 | .000 | 1-2 | 0 | 0 |
| | Total | 11 | 38 | 44 | 82 | 406 | .094 | 35-70 | 8 | 1 |
| | Opponents | 11 | 18 | 25 | 43 | 241 | .075 | 51-102 | 3 | 0 |

| # | Goalie | gp | min | ga | gaavg | saves | save% | w-l-t |
|----|-----------------|----|--------|----|-------|-------|-------|-------|
| 1 | Lindsey Hibbard | 11 | 630:01 | 15 | 1.43 | 219 | .936 | 7-1-2 |
| 35 | Amanda Koep | 1 | 40:50 | 3 | 4.41 | 4 | .571 | 1-0-0 |
| TM | EMPTY NET | 2 | 0:18 | 0 | - | 0 | .000 | 0-0-0 |
| | Total | 11 | 671:09 | 18 | 1.61 | 223 | .925 | 8-1-2 |
| | Opponents | 11 | 671:09 | 38 | 3.40 | 367 | .906 | 1-8-2 |

| Attendance Summary | GAC | Opponent |
|--------------------|-------|----------|
| Total | 644 | 891 |
| Dates/Avg Per Date | 6/107 | 4/223 |
| Neutral Site #/Avg | 1/120 | |

| Goals by Period | 1st | 2nd | 3rd | OT | Total |
|-------------------|-----|-----|-----|----|-------|
| Gustavus Adolphus | 8 | 11 | 19 | 0 | 38 |
| Opponents | 4 | 8 | 5 | 1 | 18 |

| Shots by Period | 1st | 2nd | 3rd | OT | Total |
|-------------------|-----|-----|-----|----|-------|
| Gustavus Adolphus | 134 | 132 | 135 | 5 | 406 |
| Opponents | 81 | 87 | 69 | 4 | 241 |

| Saves by Period | 1st | 2nd | 3rd | OT | Total |
|-------------------|-----|-----|-----|----|-------|
| Gustavus Adolphus | 77 | 79 | 64 | 3 | 223 |
| Opponents | 126 | 121 | 115 | 5 | 367 |

Gustavus Adolphus Hockey
Gustavus Adolphus Game Results (as of Jan 08, 2015)
All games

| Date | Opponent | | Score | Shots | Overall | Conf | Time | Att. | Goalie of record |
|----------|-----------------------|-----|-------|-------|---------|-------|------|------|------------------|
| Nov 04 | #9 UW-SUPERIOR | W | 3-1 | 29/23 | 1-0-0 | 0-0-0 | 2:08 | 123 | Lindsey Hibbard |
| * Nov 14 | CONCORDIA COLLEGE | W | 3-1 | 42/30 | 2-0-0 | 1-0-0 | 2:05 | 111 | Lindsey Hibbard |
| * Nov 15 | CONCORDIA COLLEGE | W | 2-0 | 44/18 | 3-0-0 | 2-0-0 | 1:54 | 73 | Lindsey Hibbard |
| * Nov 21 | HAMLIN UNIVERSITY | W | 6-3 | 39/11 | 4-0-0 | 3-0-0 | 1:52 | 143 | Amanda Koep |
| * Nov 22 | at Hamline University | W | 4-0 | 47/19 | 5-0-0 | 4-0-0 | 2:00 | 164 | Lindsey Hibbard |
| Nov 29 | at Plattsburgh State | Tot | 4-4 | 26/42 | 5-0-1 | 4-0-0 | 2:12 | 381 | Lindsey Hibbard |
| Nov 30 | vs #5 Middlebury | Lot | 2-3 | 38/28 | 5-1-1 | 4-0-0 | 2:03 | 120 | Lindsey Hibbard |
| * Dec 05 | at St. Olaf | W | 7-2 | 36/12 | 6-1-1 | 5-0-0 | 1:52 | 163 | Lindsey Hibbard |
| * Dec 06 | ST. OLAF | Tot | 1-1 | 41/13 | 6-1-2 | 5-0-1 | 2:06 | 97 | Lindsey Hibbard |
| Dec 10 | at #6 UW-River Falls | W | 3-2 | 22/29 | 7-1-2 | 5-0-1 | 1:58 | 183 | Lindsey Hibbard |
| Dec 13 | UW-STEVENS POINT | W | 3-1 | 42/16 | 8-1-2 | 5-0-1 | 2:02 | 97 | Lindsey Hibbard |

| Team Record | W-L-T | Attendance | Dates | Total | Avg. |
|-------------|-------|------------|-------|-------|------|
| Overall: | 8-1-2 | Total: | 11 | 1655 | 150 |
| Conference: | 5-0-1 | Home: | 6 | 644 | 107 |
| Home: | 5-0-1 | Away: | 4 | 891 | 223 |
| Away: | 3-0-1 | Neutral: | 1 | 120 | 120 |
| Neutral: | 0-1-0 | | | | |
| Overtime: | 0-1-2 | | | | |