



GUSTAVUS WOMEN'S HOCKEY NOTES 2014-15

Gustavus Sports Information

800 W College Ave, St. Peter, MN 56082
gustavus.edu/athletics
(507) 933-7647 • sportsinfo@gustavus.edu

Women's Hockey Media Contact
Nick Hoelmer, Asst. Sports Information Director
(507) 933-8411 • nhoelmer@gustavus.edu

Follow Gustavus Athletics Online

Twitter
@GustieAthletics

Facebook
facebook.com/GustieAthletics

Game Central
portal.stretchinternet.com/gac

Flickr
flickr.com/photos/gogusties

YouTube
youtube.com/gustavusathletics

Instagram
instagram.com/gustieathletics

2014-15 SCHEDULE

DATE	OPPONENT	TIME/RESULT
NOVEMBER		
4	No. 9 UW-SUPERIOR	W 3-1
14	CONCORDIA COLLEGE	W 3-1
15	CONCORDIA COLLEGE	W 2-0
21	HAMLIN UNIVERSITY	W 6-3
22	Hamline University	W 4-0
29	No. 1 Plattsburgh State University	T 4-4 (SL)
30	No. 5 Middlebury College	L 2-3 (OT)
DECEMBER		
5	St. Olaf College	W 7-2
6	ST. OLAF COLLEGE	T 1-1
10	No. 6 UW-River Falls	W 3-2
13	No. 7 UW-STEVENS POINT	W 3-1
JANUARY		
9	NO. 7 ADRIAN COLLEGE	L 0-1
10	LAKE FOREST COLLEGE	W 2-1
16	AUGSBURG COLLEGE	W 5-0
17	Augsburg College	W 2-1
23	SAINT MARY'S UNIVERSITY	W 3-2
24	Saint Mary's University	W 1-0
30	COLLEGE OF SAINT BENEDICT	7 p.m.
31	College of Saint Benedict	4:15 p.m.
FEBRUARY		
6	St. Catherine University	7 p.m.
7	ST. CATHERINE UNIVERSITY	2 p.m.
13	University of St. Thomas	7:30 p.m.
14	UNIVERSITY OF ST. THOMAS	2 p.m.
20	BETHEL UNIVERSITY	7 p.m.
21	Bethel University	2 p.m.

HOME GAMES IN BOLD AND CAPS



6 Gustavus Adolphus College

Golden Gusties
9-0-1 MIAC, 13-2-2 Overall
vs.

College of Saint Benedict

Blazers
4-4-2 MIAC, 5-7-2 Overall

Game 18

Date: Friday, January 30 • **Time:** 7 p.m. • **Location:** St. Peter, Minn.

Arena: Don Roberts Ice Rink

Live Video: <http://portal.stretchinternet.com/gac/>

Live Stats: <https://gustavus.edu/athletics/whky/LIVE/xlive.htm>

Game 19

Date: Saturday, January 31 • **Time:** 4:15 p.m. • **Location:** St. Cloud, Minn.

Arena: St. Cloud Municipal Athletic Complex

Live Audio: http://www.kjnradio.org/?page_id=235

Live Stats: <http://www.csblazers.com/custompages/livestats/xlive.htm>



Setting The Scene: After earning a series sweep over Saint Mary's University this past weekend, the Gustavus Adolphus women's hockey team will be back in action this Friday and Saturday, Jan. 30 and 31, when it takes on the College of Saint Benedict in a home-home series. Gustavus will welcome the Blazers to St. Peter on Friday for a 7 p.m. game at Don Roberts Ice Rink and will travel to St. Cloud, Minnesota on Saturday for a 4:15 p.m. game at St. Cloud Municipal Athletic Complex. Gustavus enters the weekend with a record of 9-0-1 in the MIAC and 13-2-2 overall, while Saint Benedict owns a 4-4-2 record in the MIAC and 5-7-2 overall mark.

Last Time Out: This past weekend, Gustavus extended its winning streak to five when it earned a series sweep over Saint Mary's University. In Friday's home game, the Gusties converted on two power play opportunities, including one from first-year forward Kaitlyn Klein with less than five minutes to play to take home the 3-2 victory. Gustavus got off to a rocky start when the Cardinals converted on a power play opportunity at the 7:04 mark in the first period, but bounced back with goals from Allison Eder-Zdechlik, Erica Power and Klein. Eder-Zdechlik's goal pushed her point streak to six.

On Saturday, despite holding a firm shot advantage in each period, including a 17-4 margin in the second, Gustavus was only able to convert on one of its 41 shot attempts on the afternoon. After Saint Mary's Mackenzie Klimek was called for her second penalty of the day, senior forward Keri Pickel was able to cash in when she scored her third goal of the season off assists from Allie Lewis and Katy Fuller just 1:15 into the second period. The goal proved to be all the Gusties would need, as Lindsey Hibbard kept Saint Mary's out of the net and tallied her fourth shutout of the season by making 19 saves.

Saint Benedict is most recently coming off a win and a tie over St. Catherine University. In game one in St. Paul, the Blazers scored two first period goals to take an early 2-0 lead, with one coming on a power play conversion from Katie Cristan, which marked Cristan's first goal of the season. The Wildcats made it a one-goal game less than three minutes into the second period, but the Blazers' Elli Marvin netted her seventh goal of the year 12 minutes into the period to push Saint Benedict's lead back to 3-1 which is where it stayed the remainder of the game.

On Saturday, the Blazers broke a scoreless tie with the Wildcats midway through the third period when Brigitte Miller took advantage of a Saint Benedict power play and notched her fifth goal of the season to put the Blazers up 1-0. However, with just 3:30 left to play, St. Catherine's Jordan Solheim scored to tie the score at 1-1. In overtime, the Wildcats put three shots on net, but Blazer goalie Jenna Traut stopped all three to preserve the 1-1 tie.

12 MIAC Championships • 11 NCAA Tournament Appearances

The Match Up Statistical Comparison

GAC		CSB
3.00 (3rd)	Goals For	2.36 (4th)
1.35 (1st)	Goals Against	3.57 (9th)
17.6% (4th)	Power Play	18.2% (3rd)
88.2% (3rd)	Penalty Kill	80.4% (8th)
+9 (1st)	Special Teams Net	-4 (7th)
6.4 (T-9th)	Penalty Minutes	8.3 (5th)

2014-15 season averages with MIAC ranks (10 teams)

The Series Gustavus vs. Saint Benedict

All-Time Record	33-2-0
Last Meeting	L 4-2
Current Streak	L 2

Coach Mike Carroll

Overall Record at Gustavus	344-80-27
vs. Saint Mary's	28-2-0

Coach Jennifer Kranz

Overall Record at Saint Benedict	23-55-9
vs. Gustavus	2-4-0

Last Five Seasons	8-2-0
-------------------	-------

Date	Location	Result
2/1/14	St. Cloud, Minn.	L 2-4
1/31/14	St. Peter, Minn.	L 2-4
2/23/13	St. Peter, Minn.	W 8-2
2/22/13	St. Cloud, Minn.	W 1-0
2/25/12	St. Cloud, Minn.	W 7-2
2/24/12	St. Peter, Minn.	W 9-1
1/22/11	St. Peter, Minn.	W 2-1
1/21/11	St. Cloud, Minn.	W 8-1
1/23/10	St. Peter, Minn.	W 4-0
1/22/10	St. Cloud, Minn.	W 7-1

* - Denotes MIAC Playoff Game

** - Denotes MIAC Championship Game

Series Snapshot: This weekend's pair of games will mark the 36th and 37th meetings between Gustavus and Saint Benedict in women's hockey. The Gusties have dominated the series thus far with a 33-2-0 record, however, the Blazers' two wins both came last season when they earned a regular season sweep against the Gusties.

Last Time They Met: The last time these two teams met was during their regular season series last season, Jan. 31 and Feb. 1, 2014. Saint Benedict swept the series, winning each game 4-2. In game one, Saint Benedict scored three first period goals to put the Gusties in an early hole. Gustavus's Allison Eder-Zdechlik scored a goal in the second and third periods each, but it was not enough to hold back the upset-minded Blazers who secured the 4-2 win.

Game two had a much different feel, as Gustavus came out firing and took an early 2-0 lead when Amanda Cartony and Courtney Boucher scored power play goals in the first and second periods, respectively. However, Saint Benedict roared back and scored four unanswered goals, with three coming in the third period, to secure the series sweep and give Gustavus its first two MIAC losses of the season.

About The Blazers: With a record of 4-4-2 in the MIAC, Saint Ben's is currently sitting in a three-way tie for fifth place in the conference standings with Augsburg and Concordia. Each team has 10 total points and sits just behind third place Bethel and Saint Mary's who each have 11 points and 5-4-1 conference records.

Saint Benedict is led by Marvin and Stephanie Kirk, both sophomore forwards who have each tallied 11 points on the season. Marvin is the team's leading goal scorer with seven and has also notched four assists, while Kirk has scored six goals on the year and has five assists. Jenna Trout is the Blazers' goalie of choice, as she has started all 14 games for Saint Ben's this season and tallied 775:31 of a possible 850:00. Trout is 4-7-2 on the season and has a goals against average of 3.09 after allowing 40 total goals and a .895 save percentage to go along with 341 saves.

Gustavus will need to limit its time spent in the penalty box, as Saint Ben's has converted on 18.2 percent of its power play attempts, good for third in the league. Overall, the Blazers average 2.36 goals per game (4th/MIAC) and allow 3.57 goals per game (9th/MIAC).

Hitting A Milestone: With its victory over Saint Mary's University on Saturday, the Gustavus women's hockey program won its 250th MIAC game all-time. The Gusties are the winningest all-time program in the conference and are the second winningest in the entire nation. Gustavus needs just 20 more wins to secure its 400th overall victory.

Behaving Themselves: Saturday's 1-0 victory over Saint Mary's University marked the first game since Dec. 1, 2012 that Gustavus was not penalized for an entire game. Gustavus was also successful in that 2012 game as it defeated Augsburg 3-1.

Gustavus Embarks On 18th Season Of Women's Hockey: The Gustavus women's hockey team is currently in its 18th season. Founded in 1997, the Gusties have attained an all-time record of 380-99-28, which stands as the second winningest program in all of NCAA Division III women's hockey. The Gustie women have won 12 MIAC titles in the 16 years of women's hockey in the conference. Those 12 titles rank first in front of St. Thomas (3) and Augsburg and Saint Mary's, who each have two. Gustavus has also earned the MIAC Playoff crown a total of 11 times, 10 of which have come in the past 11 years and led to 11 NCAA Tournament appearances.

Wearing The "C": In the 17-year history of the Gustavus women's hockey program, 33 players have earned the honor of being a captain. This year, that number stays the same as two of the 2013-14 captains, Carolyn Draayer and Courtney Boucher, will move into their senior years and accept the same role during their 2014-15 campaign.

Home Grown Talent: Of the 24 players on this year's roster, 22 are natives of Minnesota. The only players who reside outside the State of Hockey are Courtney Bethune, who hails from Fort Frances, Ontario, and Allie Lewis, who is a native of Kearney, Nebraska.

Veteran Squad: Despite losing three of its top five scorers from its 2013-14 squad, Gustavus will return 63 percent of its scoring from last season. Sixteen of the Gusties' 24 players are returners, compared to just eight first-year players. Gustavus will also welcome back three of its four 2013-14 All-MIAC honorees, which include Courtney Boucher, Carolyn Draayer and Allison Eder-Zdechlik.

Gusties In The Polls: Gustavus is ranked sixth in the most recent USCHO.com Division III Women's Hockey Poll, which was released Monday. This week marks the 86th consecutive time that the Gusties have been ranked in the USCHO.com poll.



Gustavus Quick Facts

Location:	St. Peter, Minnesota
Address:	800 West College Ave. St. Peter, MN 56082
Founded:	1862
Enrollment:	2,455
Nickname:	Golden Gusties
School Colors:	Black and Gold
Home Ice:	Don Roberts Ice Rink
NCAA Affiliation:	NCAA Division III
Conference:	Minnesota Intercollegiate Athletic
President:	Rebecca M. Bergman
Athletic Director:	Tom Brown
Assistant Athletic Director:	Jared Phillips
Athletic Trainer:	Troy Banse
Equipment Manager:	Jed Friedrich
Sports Information Director:	Ethan Armstrong
Asst. Sports Information Director:	Nick Hoelmer

Gustavus Hockey Quick Facts

2013-14 Record:	17-8-2
2013-14 MIAC Record/Finish:	14-4-0/2nd
All-Time Record:	380-99-28
All-Time MIAC Record:	250-27-12
MIAC Championships:	12
Returners/First-years:	16/8
All-MIAC Honorees Returning/Lost:	3/1

Gustavus Under Head Coach Mike Carroll

Year	Overall	MIAC	Conference Finish
1999-00	18-10-1	12-5-1	3rd
2000-01	23-6-1	16-2-0	1st
2001-02	23-5-2	18-0-1	1st
2002-03	14-9-4	11-4-3	3rd
2003-04	22-6-0	16-2-0	2nd
2004-05	25-4-1	17-1-0	1st
2005-06	22-5-2	17-0-1	1st
2006-07	25-3-0	17-1-0	1st
2007-08	25-3-0	18-0-0	1st
2008-09	22-2-4	16-0-2	1st
2009-10	26-6-2	14-3-1	1st
2010-11	22-5-3	14-2-2	1st
2011-12	24-4-2	16-1-1	1st
2012-13	27-2-1	18-0-0	1st
2013-14	17-8-2	14-4-0	2nd
2014-15	13-2-2	9-0-1	
Totals	344-80-27	243-25-13	11 MIAC Titles

Around The League

MIAC Standings

School	Points	MIAC	Overall
Gustavus	19	9-0-1	13-2-2
St. Thomas	16	7-1-2	8-7-2
Bethel	11	5-4-1	10-6-1
Saint Mary's	11	5-4-1	7-8-2
Augsburg	10	4-4-2	6-8-3
Saint Benedict	10	4-4-2	5-7-2
Concordia	10	4-4-2	5-10-2
St. Catherine	7	2-5-3	4-8-4
Hamline	4	1-7-2	3-12-2
St. Olaf	2	0-8-2	1-14-2

This Weekend in the MIAC

Friday, January 30

Saint Benedict at Gustavus | 7 p.m.

St. Thomas at Augsburg | 7 p.m.

Concordia at Hamline | 7 p.m.

Bethel at St. Catherine | 7:30 p.m.

Saint Mary's at St. Olaf | 7:30 p.m.

Saturday, January 31

St. Olaf at Saint Mary's | 2 p.m.

Augsburg at St. Thomas | 2 p.m.

Concordia at Hamline | 2 p.m.

St. Catherine at Bethel | 3 p.m.

Gustavus at Saint Benedict | 4:15 p.m.

MIAC Athlete-of-the-Week



Kathryn Larson

So., Forward

Shoreview, Minn./Mounds View

Opponent	G	A	P
St. Olaf	3	1	4
@ St. Olaf	1	2	3

USCHO.com Div. III Poll

Rank	School	Overall	Points	Last
1	Plattsburgh (15)	15-0-2	150	1
2	Elmira	15-1-1	132	2
3	Norwich	11-3-2	104	3
4	Middlebury	10-2-3	100	4
5	Adrian	15-0-3	97	5
6	Gustavus Adolphus	13-2-2	81	6
7	Wisconsin-River Falls	14-3-1	60	7
8	Amherst	11-1-3	55	8
9	Wisconsin-Stevens Point	12-6-2	29	9
10	Bowdoin	8-5-3	5	10
10	Wisconsin-Superior	14- 6-0	5	NR

Gustavus Record When:

At home	8-1-1
On the road	5-0-1
Neutral Site	0-1-0
vs. MIAC opponents	9-0-1
vs. Non-conference opponents	4-2-1
vs. Top 10 opponents	3-2-1
GAC scores 4 or more goals	5-0-1
GAC scores 3 goals	5-0-0
GAC scores 2 or fewer goals	4-2-1
GAC scores first	8-1-1
Opponent scores first	5-1-1
GAC leads after 1st period	4-1-1
Opponent leads after 1st period	2-0-0
Tied after 1st period	5-1-1
GAC leads after 2nd period	6-0-1
Opponent leads after 2nd period	2-0-1
Tied after 2nd period	4-2-0
In overtime	0-1-1
Games decided by one goal	5-2-0
Games decided by two goals	4-0-0
Games decided by three goals	1-0-0
Games decided by four or more	3-0-0
GAC scores on the power play	5-0-0
GAC scoreless on the power play	5-2-2
GAC scores two or more PP goals	4-0-0
GAC outshoots opponent	11-1-1
GAC outshot by opponent	1-1-1
Shots equal	1-0-0
Tuesday Games	1-0-0
Wednesday Games	1-0-0
Friday Games	5-1-0
Saturday Games	6-0-2
Sunday Games	0-1-0
In November	5-1-1
In December	3-0-1
In January	5-1-0
In February	0-0-0
In March	0-0-0
Following a win	9-1-2
Following a loss	2-0-0
Following a tie	1-1-0
Night games	8-1-1
Day games	5-1-1

Who's Hot

Scoring vs. SMU

<u>Player</u>	<u>Games</u>	<u>Goals</u>	<u>Assists</u>	<u>Points</u>	<u>Point Streak</u>
Allison Eder-Zdechlik	2	1	0	1	6
Carolyn Draayer	2	0	1	1	3
Katie Aney	2	0	2	2	-

Goaltending vs. SMU

<u>Player</u>	<u>Record</u>	<u>Minutes</u>	<u>GA</u>	<u>Saves</u>	<u>Scoreless Str.</u>
Lindsey Hibbard	2-0-0	120:00	2	36	70:59

2014-15 Season By The Numbers

Largest Victory	5 (2X) Last: vs. Augsburg (1/16/15)
Largest Defeat	1 (2X) Last: vs. Adrian (1/9/15)
Largest First Period Lead	2 vs. Hamline (11/21/14)
Largest First Period Deficit	1 (3x) last: vs. Saint Mary's (1/23/15)
Largest Second Period Lead	3 (3x) Last: vs. Augsburg (1/16/15)
Largest Second Period Deficit	2 vs. Plattsburgh (11/29/14)
Most Goals Scored	7 vs. St. Olaf (12/5/14)
Fewest Goals Scored	0 vs. Adrian (1/9/15)
Most Goals Allowed	4 vs. Plattsburgh (11/29/14)
Fewest Goals Allowed	0 (2x) Last: vs. Hamline (11/21/14)
Largest Lead	5 (2X) Last: vs. Augsburg (1/16/15)
Largest Lead On Road	5 vs. St. Olaf (12/5/14)
Largest Lead At Home	5 vs. Augsburg (1/16/15)
Largest Blown Lead	1 vs. Middlebury (11/30/14)
Largest Deficit	3 vs. Plattsburgh (11/29/14)
Largest Deficit On Road	3 vs. Plattsburgh (11/29/14)
Largest Deficit At Home	1 vs. Adrian (1/9/15)
Largest Comeback-Win/Tie	3 vs. Plattsburgh=Tie (11/29/14)



Last Time It Happened

COMEBACKS

GAC won when trailing after two periods

December 13, 2014 vs. UW-Stevens Point. Trailing 1-0 early in the third, Gustavus scored three consecutive goals to capture a 3-1 victory.

Opponent won when trailing after two periods

Feb. 1, 2014 vs. Saint Benedict. Blazers trailed 2-1 after two periods, but scored three in the third to capture a 4-2 win.

Overcame 1-goal deficit and won

GAC: January 23, 2015 vs. Saint Mary's University. Trailing 1-0 early in the first, Gustavus won 3-2.

OPP: Nov. 30, 2014 vs. Middlebury. Trailing 1-0 in first period, won 3-2

Overcame 2-goal deficit and won

GAC: Feb. 29, 2013 vs. Bethel. Gusties trailed 2-0 after two, but came back with three goals in the third for a 3-2 win.

OPP: Feb. 1, 2014 vs. Saint Benedict. Blazers trailed 2-0 in second period, but scored four unanswered goals to capture a 4-2 win.

Overcame a 3-goal deficit and won

GAC: March 1, 1998 vs. University of Minnesota Club. Gusties scored one in the second and three in the third to win 4-3.

OPP: Never

OVERTIME GAMES

Won overtime game

GAC: March 1, 2012 vs. Bethel. Courtney Boucher scored 6:25 in to overtime to win 1-0 and advance to the MIAC Championship.

OPP: Nov. 30, 2014 vs. Middlebury

Tied overtime game

Nov. 29, 2014 at Plattsburgh (4-4)

SERIES SWEEPS

Swept a 2-game regular season home-home series

GAC: Jan. 23-24, 2015 vs. Saint Mary's University. (3-2 Friday in St. Peter, 1-0 Saturday in Winona)

OPP: Jan. 31-Feb. 1, 2014 vs. Saint Benedict. (4-2 Friday night in St. Peter, 4-2 again on Saturday in St. Cloud)

Swept a 2-game regular season home series

GAC: Nov. 14-15, 2014 vs. Concordia. (3-1, 2-0)

OPP: Never

Swept a 2-game regular season away series

GAC: Nov. 15-16, 2013 at Concordia. (4-1, 2-0)

OPP: Never. (MIAC Playoffs: March 10-11, 2000 at Augsburg. (4-1, 2-1)

SHUTOUTS

Last Shutout

GAC: Jan. 24, 2015 vs. Saint Mary's, 1-0

OPP: Jan. 9, 2015 vs. Adrian, 1-0

Last Home Shutout

GAC: Jan. 16, 2015 vs. Augsburg, 5-0

OPP: Jan. 9, 2015 vs. Adrian 1-0

Last Road Shutout

GAC: Jan. 24, 2015 vs. Saint Mary's, 1-0

OPP: Mar. 8, 2014 vs. St. Thomas 2-0

Scoreless Ties (2 in program history)

Jan. 14, 2010 vs. Trinity (Conn.)

Feb. 17, 2009 at UW-Stevens Point

EXTRA ATTACKER GOALS

Scored an extra attacker goal

GAC: Nov. 30, 2014 vs. Middlebury. Lydia Wagner scored w/ 39 sec. left

OPP: Jan. 9, 2005 at UW-River Falls. Gusties won 6-4.

SHORTHANDED GOALS

Scored a shorthanded goal

GAC: Jan. 16, 2015 vs. Augsburg. Allison Eder-Zdechlik scored shorthanded goal in second period to put Gustavus up 3-0.

OPP: Jan. 10, 2014 at UW-Stevens Point. Cassandra Salmen scored shorthanded in the third period of a 5-2 win for the Pointers.

Scored two shorthanded goals

GAC: Nov. 22, 2008 at St. Olaf. Melissa Mackley scored two short-handed goals in the third period.

Gusties won 4-2.

OPP: Never

EMPTY NET GOALS

Scored an empty net goal

GAC: Dec. 13, 2014 vs. UW-Stevens Point. Allison Eder-Zdechlik scored EN at 19:46 of a 3-1 win for the Gusties in St. Peter.

OPP: Feb. 15, 2014 vs. St. Thomas. Karina Marette scored EN at 19:47 of a 3-1 Tommie win in Mendota Heights.

TEAM GOALS IN A PERIOD

Team scored 5 or more goals in a period

GAC: Feb. 23, 2013 vs. Saint Benedict. The Gusties scored six goals in the second period on their way to an 8-2 victory in St. Peter.

OPP: Dec. 3, 1998 at the University of Minnesota (Mariucci Arena. Gophers scored five goals in the first period and won 8-1.

PENALTY SHOTS

Scored on a penalty shot

GAC: Never.

OPP: March 19, 2011 vs. Middlebury (NCAA 3rd Place Game, Rochester, N.Y.). Penalty shot goal scored after Lindsey Hjelm checking penalty in the second period. Middlebury won 5-0.

PENALTIES

Not penalized

GAC: Jan. 24, 2015 at Saint Mary's. Gustavus won 1-0.

OPP: Dec. 2, 2000 at St. Catherine. St. Kate's won 4-3.

Neither team was penalized

Jan. 30, 1998 at Saint Mary's. Gusties won 6-2.

HAT TRICKS

Last individual 3-goal game

GAC: Jan. 26, 2013 vs. Concordia. Lindsey Hjelm scored three goals (all even) in a 5-1 Gustavus win in St. Peter.

OPP: Jan. 10, 2014 at UW-Stevens Point. Cassandra Salmen scored three goals in the third period of a 5-2 Pointer win.

Last individual 4-goal game

GAC: Dec. 2, 2011 at Augsburg. Allie Schwab scored three PP goals and an even goal in a 9-0 shutout.

OPP: Never.

All goals scored by one player (3+ Goals)

GAC: Never.

OPP: Dec. 2, 2006 at Hamline. Melanie Levielle scored all three goals in a 4-3 loss.

SHOTS ON GOAL

Fewer than 15 shots in a game

GAC: Dec. 3, 1998 at the University of Minnesota, 11 shots. Minnesota won 8-1.

OPP: Jan. 16, 2015 vs. Augsburg, 10 shots. Gustavus won 5-0.

Fewer than 20 shots in a game

GAC: Jan. 9, 2015 vs. Adrian, 17 shots. Gustavus lost 1-0.

OPP: Jan. 24, 2015 vs. Saint Mary's, 19 shots. Gustavus won 1-0.

40 or more shots in a game

GAC: Jan. 24, 2015 vs. Saint Mary's, 41 shots. Gustavus won 1-0.

OPP: Nov. 29, 2014 at Plattsburgh, 42 shots. Tied 4-4.

50 or more shots in a game

GAC: Feb. 16, 2013 vs. St. Olaf, 51 shots. Gustavus won 6-2.

OPP: Nov. 23, 1998 vs. the University of Minnesota: 51 shots. Minnesota won 6-0.

60 or more shots in a game

GAC: Feb. 15, 2013 at St. Olaf, 61 shots. Gustavus won 7-4.

OPP: Feb. 5, 1998 at Boston College, 65 shots. BC won 10-1.

SINGLE GAME POINTS

Player had four points in a game

GAC: Dec. 5, 2014 at St. Olaf. Erica Power scored two goals, two assists. Diana Draayer scored one goal, three assists in same game. OPP: Mar. 18, 2011 vs. Norwich (NCAA Semifinals). Julie Fortier scored three goals with an assist in a 5-4 Norwich victory.

Player had five points in a game

GAC: Dec. 2, 2011 at Augsburg. Allie Schwab scored three PP goals and an even goal with an assist in a 9-0 shutout.

OPP: Mar. 18, 2005 vs. Middlebury. (NCAA Semifinals) Lorna Grifis scored two goals with three assists in a 7-3 Middlebury win.

Player had six or more points in a game

GAC: Feb. 11, 2005 at St. Catherine. Andrea Peterson scored two goals with six assists in a 13-0 win. (Most individual points in a game in program history)

OPP: Jan. 30, 1999 at Middlebury. Michelle Labbe scored three goals with three assists in a 8-0 Middlebury win.





Carroll At A Glance

Hometown

- Edina, Minnesota

Education

- Bachelor's Degree: Recreation, Parks, and Leisure Services (Minnesota State, Mankato '82)

Family

- Wife: Terri
- Children: Matt and Mike

Coaching

- 1983-84 – Assistant Coach, University of St. Thomas
- 1984-85 – Assistant Coach, Fergus Falls High School
- 1986-87 – Head Coach, Fergus Falls Community College
- 1990-99 – Head Coach, Mankato West High School
- 1999-Present – Head Coach, Gustavus Adolphus College

Years At Gustavus: 15

All-time Record: 344-80-27

All-time MIAC Record: 243-25-13

MIAC Titles: 11

MIAC Playoff Titles: 11

NCAA Tournaments: 11

NCAA Tournament Record: 8-16-0

Final Fours: 7

Most Wins In A Season: 27 (2012-13)

Fewest Wins In A Season: 14 (2002-03)

*** All-time winningest coach in Gustavus women's hockey history.

Head Coach Mike Carroll

Mike Carroll is in his 16th season as the women's head hockey coach at Gustavus. Within his tenure behind the Gustie bench, Carroll has turned Gustavus women's hockey into one of the most successful programs in NCAA Division III. He has compiled an overall record of 344-80-27 in 15 seasons and has the most coaching victories in the history of the program.

Last season, the Gustavus women's hockey team saw its reign atop the Minnesota Intercollegiate Athletic Conference (MIAC) come to an end. The Gusties finished second in the final conference standings with 28 points at 14-4-0, ending their streak of consecutive MIAC Championships at nine. After defeating Bethel 3-2 in the MIAC Playoff Semifinals, Gustavus's season concluded with a 2-0 loss to regular season champion St. Thomas in the MIAC Playoff Championship. The postseason defeat suffered to the Tommies ended Head Coach Mike Carroll's run of 10 consecutive MIAC Playoff titles and trips to the NCAA Tournament. The Gusties finished the year with an overall record of 17-8-2.

Carroll has directed the Gusties to 11 MIAC regular season titles (2000-01, 2001-02, 2004-05, 2005-06, 2006-07, 2007-08, 2008-09, 2009-10, 2010-11, 2011-12, 2012-13) and has been named the MIAC Coach-of-the-Year six times (2001-02, 2003-04, 2004-05, 2005-06, 2010-11, 2012-13). In addition to coaching 34 players who have earned All-Conference honors 59 times, he has coached five MIAC Players-of-the-Year in Sarah Garrison, Andrea Peterson, Stefanie Ubl, Allie Schwab, Lindsey Hjelm. Carroll has also worked with 13 players who have earned AHCA All-America distinction 21 times and two American Hockey Coaches Association Players-of-the-Year, including four-time MIAC Player-of-the-Year and four-time All-American Andrea Peterson.

Prior to coming to Gustavus, Carroll served as the head boys' hockey coach at Mankato West High School from 1991 to 1999. Carroll's college coaching resume included a stint as head men's hockey coach at Fergus Falls Community College from 1986 to 1987 as well as a season as the assistant men's coach at the University of St. Thomas in 1983.

Carroll, an Edina, Minnesota native, competed in hockey and baseball at Mankato State. After graduating with a degree in municipal recreation in 1982, Carroll played professional baseball in the Montreal Expos organization for two years.

In addition to his hockey coaching duties at Gustavus, Carroll is also the head coach of the Golden Gustie baseball team. Mike and his wife, Terri, live in Mankato and have two sons, Matt and Mike.

2014-15 Roster Breakdown

Returners (16)

Courtney Bethune
Courtney Boucher
Marissa Brandt
Carolyn Draayer
Allison Eder-Zdechlik
Emily Gustafson
Hannah Heacox
Lindsey Hibbard
Callie Johnson
Leah Johnson
Amanda Koep
Allie Lewis
Keri Pickel
Courtney Potter
Emily Reibert
Lydia Wagner

Newcomers (8)

Katie Aney
Diana Draayer
Katy Fuller
Laura Johnson
Kaitlyn Klein
Erica Power
Ashley Ritten
Rachel Skoglund

By Class

Seniors (5)

Courtney Boucher
Marissa Brandt
Carolyn Draayer
Leah Johnson
Keri Pickel

Juniors (4)

Allison Eder-Zdechlik
Lindsey Hibbard
Amanda Koep
Emily Reibert

Sophomores (7)

Courtney Bethune
Emily Gustafson
Hannah Heacox
Callie Johnson
Allie Lewis
Courtney Potter
Lydia Wagner

First-Years (8)

Katie Aney
Diana Draayer
Katy Fuller
Laura Johnson
Kaitlyn Klein
Erica Power
Ashley Ritten
Rachel Skoglund

2014-15 Numerical Roster

No.	Name	Yr.	Pos.	Hgt.	Hometown/High School
1	Lindsey Hibbard	Jr.	G	5-6	Princeton, Minn./Princeton
2	Courtney Bethune	So.	D	5-8	Fort Frances, Ont./Warroad
3	Emily Reibert	Jr.	F	5-5	Inver Grove Heights, Minn./South St. Paul
4	Diana Draayer	Fy.	F	5-5	Deephaven, Minn./Minnetonka
5	Rachel Skoglund	Fy.	D	5-2	Forest Lake, Minn./Forest Lake
6	Emily Gustafson	So.	F	5-1	Esko, Minn./Esko
7	Lydia Wagner	So.	D	5-7	Zumbrota, Minn./Zumbrota-Mazeppa
8	Allison Eder-Zdechlik	Jr.	F	5-4	Stillwater, Minn./Stillwater
9	Erica Power	Fy.	F	5-6	Lakeville, Minn./Apple Valley
10	Courtney Boucher	Sr.	F/D	5-7	Hastings, Minn./Hastings
11	Keri Pickel	Sr.	F	5-2	Rochester, Minn./Mayo
12	Hannah Heacox	So.	F	5-3	Stillwater, Minn./Stillwater
13	Katie Aney	Fy.	F	5-8	Rochester, Minn./Century
14	Katy Fuller	Fy.	F	5-5	Minneapolis, Minn./Southwest
15	Leah Johnson	Sr.	F	5-4	Chanhassen, Minn./Chaska
17	Callie Johnson	So.	F	5-7	Detroit Lakes, Minn./Detroit Lakes
18	Carolyn Draayer	Sr.	F	5-6	Deephaven, Minn./Minnetonka
19	Allie Lewis	So.	F	5-3	Kearney, Neb./Shattuck-St. Mary's
20	Kaitlyn Klein	Fy.	F	5-6	Plymouth, Minn./Wayzata
22	Marissa Brandt	Sr.	F/D	5-6	Vadnais Heights, Minn./Hill-Murray
23	Laura Johnson	Fy.	D	5-5	Chanhassen, Minn./Chanhassen
24	Courtney Potter	So.	D	5-2	Dayton, Minn./Champlin Park
33	Ashley Ritten	Fy.	G	5-6	Robbinsdale, Minn./Robbinsdale Armstrong
35	Amanda Koep	Jr.	G	5-5	St. Michael, Minn./St. Michael-Albertville

Head Coach: Mike Carroll (16th season)

Assistant Coaches: Amanda Trunzo, Steve Carroll

Alphabetical Roster/Pronunciation Guide

NO.	NAME	Pronunciation
13	Aney, Katie	
2	Bethune, Courtney	beth-00N
10	Boucher, Courtney	BOO-shay
22	Brandt, Marissa	
18	Draayer, Carolyn	DRAY-er
4	Draayer, Diana	DRAY-er
8	Eder-Zdechlik, Allison	ee-der-ZED-lick
14	Fuller, Katy	
6	Gustafson, Emily	GUST-uhf-son
12	Heacox, Hannah	HEE-cox
1	Hibbard, Lindsey	
23	Johnson, Laura	
15	Johnson, Leah	
17	Johnson, Callie	
20	Klein, Kaitlyn	
35	Koep, Amanda	COPE
19	Lewis, Allie	
11	Pickel, Keri	
9	Power, Erica	
24	Potter, Courtney	
3	Reibert, Emily	RYE-bert
33	Ritten, Ashley	
5	Skoglund, Rachel	SKOHG-lund
7	Wagner, Lydia	

Player Profiles



#1 Lindsey Hibbard
Jr., Goaltender
Princeton, Minn./Princeton

Season Numbers

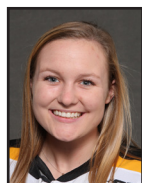
GP	GAA	Save Pct.	Record
16	1.23	.943	11-2-2



#2 Courtney Bethune
So., Defender
Fort Frances, Ont./Warroad

Season Numbers

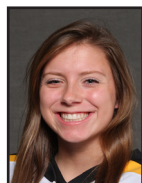
GP	Goals	Assists	Points
17	0	0	0



#3 Emily Reibert
Jr., Forward
Inver Grove Heights, Minn./South St. Paul

Season Numbers

GP	Goals	Assists	Points
16	5	2	7



#4 Diana Draayer
Fy., Forward
Deephaven, Minn./Minnetonka

Season Numbers

GP	Goals	Assists	Points
17	2	9	11



#5 Rachel Skoglund
Fy., Defender
Forest Lake, Minn./Forest Lake

Season Numbers

GP	Goals	Assists	Points
16	2	4	6



#6 Emily Gustafson
So., Forward
Esko, Minn./Esko

Season Numbers

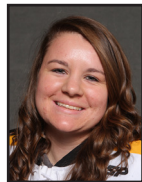
GP	Goals	Assists	Points
16	0	2	2



#7 Lydia Wagner
So., Defender
Zumbrota, Minn./Zumbrota-Mazeppa

Season Numbers

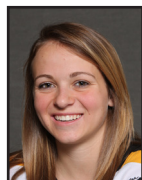
GP	Goals	Assists	Points
16	2	3	5



#8 Allison Eder-Zdechlik
Jr., Forward
Stillwater, Minn./Stillwater

Season Numbers

GP	Goals	Assists	Points
13	9	5	14

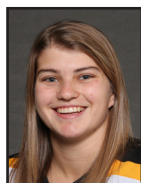


#9 Erica Power
Fy., Forward
Lakeville, Minn./Apple Valley

Season Numbers

GP	Goals	Assists	Points
17	6	10	16

Player Profiles



#10 Courtney Boucher

Sr., Forward/Defender
Hastings, Minn./Hastings

Season Numbers

GP	Goals	Assists	Points
17	2	5	7



#11 Keri Pickel

Sr., Forward
Rochester, Minn./Mayo

Season Numbers

GP	Goals	Assists	Points
17	3	2	5



#12 Hannah Heacox

So., Forward
Stillwater, Minn./Stillwater

Season Numbers

GP	Goals	Assists	Points
5	0	0	0



#13 Katie Aney

Fy., Forward
Rochester, Minn./Century

Season Numbers

GP	Goals	Assists	Points
17	4	2	6



#14 Katy Fuller

Fy., Forward
Minneapolis, Minn./Southwest

Season Numbers

GP	Goals	Assists	Points
17	2	3	5



#15 Leah Johnson

Sr., Forward
Chanhausen, Minn./Chanhausen

Season Numbers

GP	Goals	Assists	Points
14	0	2	2



#17 Callie Johnson

So., Forward
Detroit Lakes, Minn./Detroit Lakes

Season Numbers

GP	Goals	Assists	Points
4	0	1	1



#18 Carolyn Draayer

Sr., Forward
Deephaven, Minn./Minnetonka

Season Numbers

GP	Goals	Assists	Points
17	8	4	12



#19 Allie Lewis

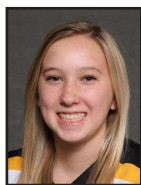
So., Forward
Kearney, Neb./Shattuck-St. Mary's

Season Numbers

GP	Goals	Assists	Points
17	0	2	2



Player Profiles



#20 Kaitlyn Klein
Fr., Forward
Plymouth, Minn./Wayzata

Season Numbers

GP	Goals	Assists	Points
17	4	3	7



#22 Marissa Brandt
Sr., Forward/Defender
Vadnais Heights, Minn./Hill-Murray

Season Numbers

GP	Goals	Assists	Points
17	2	2	4



#23 Laura Johnson
Fr., Defender
Chanhassen, Minn./Chanhassen

Season Numbers

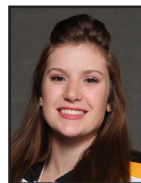
GP	Goals	Assists	Points
13	0	1	1



#24 Courtney Potter
So., Defender
Dayton, Minn./Champlin Park

Season Numbers

GP	Goals	Assists	Points
6	0	0	0



#33 Ashley Ritten
Fr., Goaltender
Robbinsdale, Minn./Robbinsdale Armstrong

Season Numbers

GP	GAA	Save Pct.	Record
0	---	---	0-0-0



#35 Amanda Koep
Jr., Goaltender
St. Michael, Minn./St. Michael-Albertville

Season Numbers

GP	GAA	Save Pct.	Record
2	2.38	.852	2-0-0

**Gustavus Adolphus Hockey
Gustavus Adolphus Overall Team Statistics (as of Jan 29, 2015)
All games**

Overall: 13-2-2 Conf: 9-0-1 Home: 8-1-1 Away: 5-0-1 Neut: 0-1-0

TEAM STATISTICS	GAC	OPP
SHOT STATISTICS		
Goals-Shot attempts	51-577	23-360
Shot pct.	.088	.064
Goals/Game	3.0	1.4
Shots/Game	33.9	21.2
Assists	62	31
POWER PLAYS		
Goals-Power Plays	13-70	6-45
Conversion Percent	.186	.133
Shot Attempts	132	64
Shot Percent	.098	.094
SHORT-HANDED		
Goals-Shot attempts	2-14	0-21
Shot Percent	.143	.000
GOAL BREAKDOWN		
Total Goals	51	23
Power Play	13	6
Short-handed	2	0
Empty net	1	0
Penalty	0	0
Unassisted	8	3
Overtime	0	1
Shootout	0	0
Delayed Penalty	0	0
PENALTIES		
Number	54	76
Minutes	108	152
Penalties/Game	3.2	4.5
Pen minutes/Game	6.4	8.9
Minor	54	76
Major	0	0
10-minute Misconduct	0	0
Game Misconduct	0	0
Gross Misconduct	0	0
Match	0	0
FACEOFFS (W-L)	513-347	347-513
Faceoff W-L Pct.	.597	.403
SHOOTOUTS (Made-Att)	1-4	2-4
ATTENDANCE		
Total	966	1243
Dates/Avg Per Date	10/97	6/207
Neutral Site #/Avg	1/120	

Goals by Period	1st	2nd	3rd	OT	Total
Gustavus Adolphus	10	16	25	0	51
Opponents	5	9	8	1	23

Shots by Period	1st	2nd	3rd	OT	Total
Gustavus Adolphus	184	200	188	5	577
Opponents	118	126	112	4	360

Saves by Period	1st	2nd	3rd	OT	Total
Gustavus Adolphus	113	117	104	3	337
Opponents	174	184	162	5	525



Gustavus Adolphus Hockey
Gustavus Adolphus Category Leaders (as of Jan 29, 2015)
All games

##	Points	GP	G	A	Pts	Sh
9	Erica Power	17	6	10	16	62
8	A. Eder-Zdechlik	13	9	5	14	49
18	Carolyn Draayer	17	8	4	12	70
4	Diana Draayer	17	2	9	11	35
3	Emily Reibert	16	5	2	7	27
20	Kaitlyn Klein	17	4	3	7	33
10	Courtney Boucher	17	2	5	7	59
13	Katie Aney	17	4	2	6	35
5	Rachel Skoglund	16	2	4	6	23
11	Keri Pickel	17	3	2	5	23

##	Goals	GP	G	A	Pts	Sh
8	A. Eder-Zdechlik	13	9	5	14	49
18	Carolyn Draayer	17	8	4	12	70
9	Erica Power	17	6	10	16	62
3	Emily Reibert	16	5	2	7	27
20	Kaitlyn Klein	17	4	3	7	33
13	Katie Aney	17	4	2	6	35
11	Keri Pickel	17	3	2	5	23
4	Diana Draayer	17	2	9	11	35
10	Courtney Boucher	17	2	5	7	59
5	Rachel Skoglund	16	2	4	6	23

##	Power-Play Goals	GP	PPG
18	Carolyn Draayer	17	3
9	Erica Power	17	2
13	Katie Aney	17	2

##	Short-Handed Goals	GP	SHG
8	A. Eder-Zdechlik	13	2

##	Game-Winning Goals	GP	GWG
8	A. Eder-Zdechlik	13	2
18	Carolyn Draayer	17	2
20	Kaitlyn Klein	17	2

##	Plus/Minus	GP	+/-
8	A. Eder-Zdechlik	13	+15
10	Courtney Boucher	17	+13
9	Erica Power	17	+12
2	Courtney Bethune	17	+9
5	Rachel Skoglund	16	+8
23	Laura Johnson	13	+7
18	Carolyn Draayer	17	+6
4	Diana Draayer	17	+6
20	Kaitlyn Klein	17	+6
3	Emily Reibert	16	+5

##	Assists	GP	G	A	Pts	Sh
9	Erica Power	17	6	10	16	62
4	Diana Draayer	17	2	9	11	35
8	A. Eder-Zdechlik	13	9	5	14	49
10	Courtney Boucher	17	2	5	7	59
18	Carolyn Draayer	17	8	4	12	70
5	Rachel Skoglund	16	2	4	6	23
20	Kaitlyn Klein	17	4	3	7	33
14	Katy Fuller	17	2	3	5	29
7	Lydia Wagner	16	2	3	5	34
3	Emily Reibert	16	5	2	7	27

##	Shots	GP	G	A	Pts	Sh	Sh%
18	Carolyn Draayer	17	8	4	12	70	.114
9	Erica Power	17	6	10	16	62	.097
10	Courtney Boucher	17	2	5	7	59	.034
8	A. Eder-Zdechlik	13	9	5	14	49	.184
4	Diana Draayer	17	2	9	11	35	.057
13	Katie Aney	17	4	2	6	35	.114
7	Lydia Wagner	16	2	3	5	34	.059
20	Kaitlyn Klein	17	4	3	7	33	.121
14	Katy Fuller	17	2	3	5	29	.069
3	Emily Reibert	16	5	2	7	27	.185

##	Shot Pct.	GP	G	A	Pts	Sh	Sh%
3	Emily Reibert	16	5	2	7	27	.185
8	A. Eder-Zdechlik	13	9	5	14	49	.184
22	Marissa Brandt	17	2	2	4	12	.167
11	Keri Pickel	17	3	2	5	23	.130
20	Kaitlyn Klein	17	4	3	7	33	.121
13	Katie Aney	17	4	2	6	35	.114
18	Carolyn Draayer	17	8	4	12	70	.114
9	Erica Power	17	6	10	16	62	.097
5	Rachel Skoglund	16	2	4	6	23	.087
14	Katy Fuller	17	2	3	5	29	.069

##	Penalties	GP	Pen	Min
23	Laura Johnson	13	7	14
3	Emily Reibert	16	5	10
7	Lydia Wagner	16	4	8
14	Katy Fuller	17	4	8
10	Courtney Boucher	17	4	8
4	Diana Draayer	17	4	8
5	Rachel Skoglund	16	3	6
18	Carolyn Draayer	17	3	6
13	Katie Aney	17	3	6
2	Courtney Bethune	17	3	6

##	Penalty Minutes	GP	Pen	Min
23	Laura Johnson	13	7	14
3	Emily Reibert	16	5	10
10	Courtney Boucher	17	4	8
4	Diana Draayer	17	4	8
14	Katy Fuller	17	4	8
7	Lydia Wagner	16	4	8
5	Rachel Skoglund	16	3	6
18	Carolyn Draayer	17	3	6
13	Katie Aney	17	3	6
2	Courtney Bethune	17	3	6

**Gustavus Adolphus Hockey
Gustavus Adolphus Combined Team Statistics (as of Jan 29, 2015)
All games**

Date	Opponent		Score	Att.
Nov 04	#9 UW-SUPERIOR	W	3-1	123
* Nov 14	CONCORDIA COLLEGE	W	3-1	111
* Nov 15	CONCORDIA COLLEGE	W	2-0	73
* Nov 21	HAMLIN UNIVERSITY	W	6-3	143
* Nov 22	at Hamline University	W	4-0	164
Nov 29	at Plattsburgh State	Tot	4-4	381
Nov 30	vs #5 Middlebury	Lot	2-3	120
* Dec 05	at St. Olaf	W	7-2	163
* Dec 06	ST. OLAF	Tot	1-1	97
Dec 10	at #6 UW-River Falls	W	3-2	183
Dec 13	UW-STEVENS POINT	W	3-1	97
Jan 09	ADRIAN	L	0-1	57
Jan 10	LAKE FOREST	W	2-1	85
* Jan 16	AUGSBURG	W	5-0	79
* 01/17/15	at Augsburg	W	2-1	222
* Jan 23	ST. MARY'S	W	3-2	101
* Jan 24	at St. Mary's	W	1-0	130

TEAM STATISTICS	GAC	OPP
SHOT STATISTICS		
Goals-Shot attempts	51-577	23-360
Shot pct.	.088	.064
Goals/Game	3.0	1.4
Shots/Game	33.9	21.2
POWER PLAYS		
Goals-Power Plays	13-70	6-45
Conversion Percent	.186	.133
Shot Attempts	132	64
Shot Percent	.098	.094
SHORT-HANDED		
Goals-Shot attempts	2-14	0-21
Shot Percent	.143	.000
GOAL BREAKDOWN		
Power Play	13	6
Short-handed	2	0
Empty net	1	0
Penalty	0	0
Unassisted	8	3
Overtime	0	1
Shootout	0	0
Delayed Penalty	0	0
PENALTIES		
Number	54	76
Minutes	108	152
Penalties/Game	3.2	4.5
Pen minutes/Game	6.4	8.9
FACEOFFS (W-L)	513-347	347-513
Faceoff W-L Pct.	.597	.403
SHOOTOUTS (Made-Att)	1-4	2-4

Record:	Overall	Home	Away	Neutral
ALL GAMES	13-2-2	8-1-1	5-0-1	0-1-0
CONFERENCE	9-0-1	5-0-1	4-0-0	0-0-0
NON-CONFERENCE	4-2-1	3-1-0	1-0-1	0-1-0

#	Player	gp	g	a	pts	sh	sh%	pen-min	pp	sh
9	Erica Power	17	6	10	16	62	.097	2-4	2	0
8	A. Eder-Zdechlik	13	9	5	14	49	.184	1-2	0	2
18	Carolyn Draayer	17	8	4	12	70	.114	3-6	3	0
4	Diana Draayer	17	2	9	11	35	.057	4-8	1	0
3	Emily Reibert	16	5	2	7	27	.185	5-10	1	0
20	Kaitlyn Klein	17	4	3	7	33	.121	0-0	1	0
10	Courtney Boucher	17	2	5	7	59	.034	4-8	0	0
13	Katie Aney	17	4	2	6	35	.114	3-6	2	0
5	Rachel Skoglund	16	2	4	6	23	.087	3-6	0	0
11	Keri Pickel	17	3	2	5	23	.130	1-2	1	0
14	Katy Fuller	17	2	3	5	29	.069	4-8	0	0
7	Lydia Wagner	16	2	3	5	34	.059	4-8	1	0
22	Marissa Brandt	17	2	2	4	12	.167	3-6	1	0
6	Emily Gustafson	16	0	2	2	16	.000	2-4	0	0
15	Leah Johnson	14	0	2	2	7	.000	2-4	0	0
19	Allie Lewis	17	0	2	2	10	.000	0-0	0	0
17	Callie Johnson	4	0	1	1	1	.000	1-2	0	0
23	Laura Johnson	13	0	1	1	24	.000	7-14	0	0
2	Courtney Bethune	17	0	0	0	20	.000	3-6	0	0
12	Hannah Heacox	5	0	0	0	4	.000	1-2	0	0
24	Courtney Potter	6	0	0	0	4	.000	0-0	0	0
TM	TEAM	3	0	0	0	0	.000	1-2	0	0
Total		17	51	62	113	577	.088	54-108	13	2
Opponents		17	23	31	54	360	.064	76-152	6	0

#	Goalie	gp	min	ga	gaavg	saves	save%	w-l-t
1	Lindsey Hibbard	16	929:21	19	1.23	314	.943	11-2-2
35	Amanda Koep	2	100:50	4	2.38	23	.852	2-0-0
TM	EMPTY NET	3	0:58	0	-	0	.000	0-0-0
Total		17	1031:09	23	1.34	337	.936	13-2-2
Opponents		17	1031:09	51	2.97	525	.911	2-13-2

Attendance Summary	GAC	Opponent
Total	966	1243
Dates/Avg Per Date	10/97	6/207
Neutral Site #/Avg	1/120	

Goals by Period	1st	2nd	3rd	OT	Total
Gustavus Adolphus	10	16	25	0	51
Opponents	5	9	8	1	23

Shots by Period	1st	2nd	3rd	OT	Total
Gustavus Adolphus	184	200	188	5	577
Opponents	118	126	112	4	360

Saves by Period	1st	2nd	3rd	OT	Total
Gustavus Adolphus	113	117	104	3	337
Opponents	174	184	162	5	525

**Gustavus Adolphus Hockey
Gustavus Adolphus Game Results (as of Jan 29, 2015)
All games**

Date	Opponent		Score	Shots	Overall	Conf	Time	Att.	Goalie of record
Nov 04	#9 UW-SUPERIOR	W	3-1	29/23	1-0-0	0-0-0	2:08	123	Lindsey Hibbard
* Nov 14	CONCORDIA COLLEGE	W	3-1	42/30	2-0-0	1-0-0	2:05	111	Lindsey Hibbard
* Nov 15	CONCORDIA COLLEGE	W	2-0	44/18	3-0-0	2-0-0	1:54	73	Lindsey Hibbard
* Nov 21	HAMLIN UNIVERSITY	W	6-3	39/11	4-0-0	3-0-0	1:52	143	Amanda Koep
* Nov 22	at Hamline University	W	4-0	47/19	5-0-0	4-0-0	2:00	164	Lindsey Hibbard
Nov 29	at Plattsburgh State	Tot	4-4	26/42	5-0-1	4-0-0	2:12	381	Lindsey Hibbard
Nov 30	vs #5 Middlebury	Lot	2-3	38/28	5-1-1	4-0-0	2:03	120	Lindsey Hibbard
* Dec 05	at St. Olaf	W	7-2	36/12	6-1-1	5-0-0	1:52	163	Lindsey Hibbard
* Dec 06	ST. OLAF	Tot	1-1	41/13	6-1-2	5-0-1	2:06	97	Lindsey Hibbard
Dec 10	at #6 UW-River Falls	W	3-2	22/29	7-1-2	5-0-1	1:58	183	Lindsey Hibbard
Dec 13	UW-STEVENSON POINT	W	3-1	42/16	8-1-2	5-0-1	2:02	97	Lindsey Hibbard
Jan 09	ADRIAN	L	0-1	17/32	8-2-2	5-0-1	2:09	57	Lindsey Hibbard
Jan 10	LAKE FOREST	W	2-1	20/20	9-2-2	5-0-1	1:56	85	Amanda Koep
* Jan 16	AUGSBURG	W	5-0	38/10	10-2-2	6-0-1	1:53	79	Lindsey Hibbard
* 01/17/15	at Augsburg	W	2-1	26/19	11-2-2	7-0-1	1:55	222	Lindsey Hibbard
* Jan 23	ST. MARY'S	W	3-2	29/19	12-2-2	8-0-1	1:52	101	Lindsey Hibbard
* Jan 24	at St. Mary's	W	1-0	41/19	13-2-2	9-0-1	1:50	130	Lindsey Hibbard

Team Record	W-L-T	Attendance	Dates	Total	Avg.
Overall:	13-2-2	Total:	17	2329	137
Conference:	9-0-1	Home:	10	966	97
Home:	8-1-1	Away:	6	1243	207
Away:	5-0-1	Neutral:	1	120	120
Neutral:	0-1-0				
Overtime:	0-1-2				