



GUSTAVUS WOMEN'S HOCKEY NOTES 2014-15

Gustavus Sports Information

800 W College Ave, St. Peter, MN 56082
gustavus.edu/athletics
(507) 933-7647 • sportsinfo@gustavus.edu

Women's Hockey Media Contact
Nick Hoelmer, Asst. Sports Information Director
(507) 933-8411 • nhoelmer@gustavus.edu

Follow Gustavus Athletics Online

Twitter
@GustieAthletics

Flickr
flickr.com/photos/gogusties

Facebook
facebook.com/GustieAthletics

YouTube
youtube.com/gustavusathletics

Game Central
portal.stretchinternet.com/gac

Instagram
instagram.com/gustieathletics

2014-15 SCHEDULE

DATE	OPPONENT	TIME/RESULT
NOVEMBER		
4	No. 9 UW-SUPERIOR	W 3-1
14	CONCORDIA COLLEGE	W 3-1
15	CONCORDIA COLLEGE	W 2-0
21	HAMLIN UNIVERSITY	W 6-3
22	Hamline University	W 4-0
29	No. 1 Plattsburgh State University	T 4-4 (SL)
30	No. 5 Middlebury College	L 2-3 (OT)
DECEMBER		
5	St. Olaf College	W 7-2
6	ST. OLAF COLLEGE	T 1-1
10	No. 6 UW-River Falls	W 3-2
13	No. 7 UW-STEVENS POINT	W 3-1
JANUARY		
9	NO. 7 ADRIAN COLLEGE	L 0-1
10	LAKE FOREST COLLEGE	W 2-1
16	AUGSBURG COLLEGE	W 5-0
17	Augsburg College	W 2-1
23	SAINT MARY'S UNIVERSITY	7 p.m.
24	Saint Mary's University	2 p.m.
30	COLLEGE OF SAINT BENEDICT	7 p.m.
31	College of Saint Benedict	4:15 p.m.
FEBRUARY		
6	St. Catherine University	7 p.m.
7	ST. CATHERINE UNIVERSITY	2 p.m.
13	University of St. Thomas	7:30 p.m.
14	UNIVERSITY OF ST. THOMAS	2 p.m.
20	BETHEL UNIVERSITY	7 p.m.
21	Bethel University	2 p.m.

HOME GAMES IN BOLD AND CAPS



6 Gustavus Adolphus

Golden Gusties
(11-2-2 Overall, 7-0-1 MIAC)

vs.

Saint Mary's University

Cardinals
(7-6-2 Overall, 5-2-1 MIAC)



Game 16

Date: Friday, January 23 • **Time:** 7 p.m. • **Location:** St. Peter, Minn.

Arena: Don Roberts Ice Rink

Live Video: <http://portal.stretchinternet.com/gac/>

Live Stats: <https://gustavus.edu/athletics/whky/LIVE/xlive.htm>

Game 17

Date: Saturday, January 24 • **Time:** 2 p.m. • **Location:** Winona, Minn.

Arena: SMU Ice Arena

Live Video: <http://portal.stretchinternet.com/smu/>

Live Stats: <http://portal.stretchinternet.com/smu/>

Setting The Scene: After earning a series sweep over Augsburg College this past weekend, the Gustavus Adolphus women's hockey team will be back in action this Friday and Saturday, Jan. 23 and 24, when it takes on Saint Mary's University in a home-away series. Gustavus will welcome the Cardinals to St. Peter on Friday for a 7 p.m. game at Don Roberts Ice Rink and will travel to Winona, Minnesota on Saturday for a 2 p.m. game at SMU Ice Arena. Gustavus enters the weekend with a record of 7-0-1 in the MIAC and 11-2-2 overall, while Saint Mary's will come to town at 5-2-1 in the MIAC and 7-6-2 overall.

Last Time Out: This past weekend, Gustavus bounced back from a lack-luster weekend against non-conference foes Adrian College and Lake Forest College when it earned a series sweep over Augsburg College. In Friday's home game, the Gusties were able to seamlessly work their way back into MIAC play, as they came away with a 5-0 victory over the Auggies. Gustavus looked fresh and crisp from the first puck drop and was able to control possession and keep the puck in the offensive zone for a majority of the game. Gustavus recorded at least a goal in each period and had six different players record points, including three apiece from Carolyn Draayer (2G, 1A) and Allison Eder-Zdechlik (1G, 2A). Lindsey Hibbard earned her third shutout of the season by playing the full 60 minutes. She made 10 saves and bumped her record to 8-2-2 on the season.

On Saturday, Gustavus needed to make a third period comeback to earn a 2-1 victory over the Auggies and complete a series sweep. The Gusties held narrow shot advantages in the first two periods, outshooting the Auggies 7-5 and 9-7, respectively, but the score remained at 0-0 until the third period.

At the 8:42 mark in the third period, Augsburg's Kayla Fuechtmann scored a power play goal to give the Auggies their first goal and lead of the series. However, as it has done for much of the season, Gustavus saved its best for last and with 7:56 remaining in the game, Draayer scored her third goal and fourth point of the series to tie the game at 1-1 on another power play off assists from Rachel Skoglund and Allison Eder-Zdechlik. Skoglund then played hero when she scored the game-winning goal with 2:58 remaining in the game to permanently give Gustavus a 2-1 lead.

Saint Mary's is coming off a series sweep of its own, as it defeated Bethel University in two one-goal victories this past weekend. In game one, the Cardinals' Jamie Henderson scored just 18 seconds into the period off an assist from Mary DeBartolo. Bethel's Caroline Kivisto pulled the Royals even with a power play tally at 13:40 of the third period, setting up a heroic finish from Saint Mary's' Mackenzie Kliemek's. The senior defender from Hastings, Minnesota tallied a power play goal of her own with 1:57 remaining in regulation to give Saint Mary's a 2-1 road victory over the Royals and momentum heading into Saturday's home game.

12 MIAC Championships • 11 NCAA Tournament Appearances

The Match Up Statistical Comparison

GAC		SMU
3.13 (1st)	Goals For	1.93 (6th)
1.40 (1st)	Goals Against	2.13 (4th)
14.9% (4th)	Power Play	17.5% (2nd)
89.8% (3rd)	Penalty Kill	88.7% (4th)
+7 (11st)	Special Teams Net	+2 (4th)
6.9 (7th)	Penalty Minutes	9.9 (3rd)

2014-15 season averages with MIAC ranks (10 teams)

The Series

Gustavus vs. Saint Mary's

All-Time Record	38-5-3
Last Meeting	W 5-0
Current Streak	W 27

Coach Mike Carroll

Overall Record at Gustavus	342-81-27
vs. Saint Mary's	33-4-3

Coach Terry Mannor

Overall Record at Saint Mary's	
85-115-26	
vs. Gustavus	0-20-1

Gustavus

Last Five Seasons	11-0-0
-------------------	--------

Date	Location	Result
1/25/14	St. Peter	W 5-0
1/24/14	Winona	W 4-3
11/2/13	St. Peter	W 8-2
2/9/13	Winona	W 6-1
2/8/13	St. Peter	W 3-1
2/11/12	St. Peter	W 5-0
2/10/12	Winona	W 8-2
2/19/11	Winona	W 3-0
2/18/11	St. Peter	W 4-2
2/20/10	St. Peter	W 1-0
2/19/10	Winona	W 3-2

* - Denotes MIAC Playoff Game

** - Denotes MIAC Championship Game

On Saturday, Saint Mary's used Lindsay Paschke's second-period goal and the stellar goaltending of Tori Herrmann to push its home ice unbeaten streak against Bethel to four games in a row when it tallied a 1-0 victory. After a scoreless first period, the Cardinals got on the board first, as Paschke tipped in a Taylor Pogreba slap shot from the point on the power play four minutes into the middle period. With Herrmann between the pipes, one goal was all the Cardinals would need, as the junior made 24 saves—including six on the Royals' five power play opportunities—en route to her second shutout of the season and third of her career.

Series Snapshot: This weekend's series marks the 46th and 47th meetings between Gustavus and Saint Mary's in women's hockey. The Gusties hold the upper hand in the all-time series with a record of 38-5-3, and have won each of the last 27 contests. Gustavus swept the regular season series last year and also captured a season-opening win against the Cardinals on Nov. 2 of last season.

Last Time They Met: The last time Gustavus faced Saint Mary's was on Jan. 25 in St. Peter when the Gusties took home a 5-0 victory over the Cardinals. After defeating Saint Mary's 4-3 the previous evening, the Gusties controlled the game throughout, taking a 1-0 lead into the first intermission before adding three more goals in the second and one in the third on the way to victory. Five different Gustavus players scored on the afternoon, while goaltender Amanda Koep recorded her first win as a Gustie in shutout fashion.

About The Cardinals: Saint Mary's is led by first-year forward Jamie Henderson who leads the team in goals scored with five. Teammates Mary DeBartolo (2G, 6A) and Breanna Peterson (1G, 7A) have each tallied eight points. Herrmann has established herself as the Cardinal's go-to goaltender, as she leads the team in minutes between the pipes with 489:20, earning a record of 4-2-2. She has allowed 13 goals for a 1.59 goals against average and made 201 saves for a .939 save percentage.

With a record of 5-2-1 in the MIAC, Saint Mary's currently sits in third place in the conference standings with 11 total points, just one shy of second place University of St. Thomas which has 12 and four shy of Gustavus which has 15.

Gustavus will need to limit its time spent in the penalty box, as Saint Mary's has converted on 17.5 percent of its power play attempts, good for second in the league. Overall, the Cardinals average 1.93 goals per game (6th/MIAC) and allow 2.13 goals per game (4th/MIAC).

Shorthanded? No Problem!: After scoring her second shorthanded goal of the season in Friday's 5-0 victory over Augsburg, Allison Eder-Zdechlik is now tied for third in the nation in shorthanded goals. Only Kayla Meneghin of Plattsburgh and Ashton Hogan of Elmira have more, as each have tallied three.

Defense Wins Championships: Coming into the weekend, the Gusties rank No. 4 in the nation and No. 1 in the MIAC in goals allowed with 1.40 per game. Oswego University tops the nation, allowing less than one goal per game with 0.93.

Gustavus Embarks On 18th Season Of Women's Hockey: The Gustavus women's hockey team is currently in its 18th season. Founded in 1997, the Gusties have attained an all-time record of 378-99-28, which stands as the second winningest program in all of NCAA Division III women's hockey. The Gustie women have won 12 MIAC titles in the 16 years of women's hockey in the conference. Those 12 titles rank first in front of St. Thomas (3) and Augsburg and Saint Mary's, who each have two. Gustavus has also earned the MIAC Playoff crown a total of 11 times, 10 of which have come in the past 11 years and led to 11 NCAA Tournament appearances.

Wearing The "C": In the 17-year history of the Gustavus women's hockey program, 33 players have earned the honor of being a captain. This year, that number stays the same as two of the 2013-14 captains, Carolyn Draayer and Courtney Boucher, will move into their senior years and accept the same role during their 2014-15 campaign.

Home Grown Talent: Of the 24 players on this year's roster, 22 are natives of Minnesota. The only players who reside outside the State of Hockey are Courtney Bethune, who hails from Fort Frances, Ontario, and Allie Lewis, who is a native of Kearney, Nebraska.

Veteran Squad: Despite losing three of its top five scorers from its 2013-14 squad, Gustavus will return 63 percent of its scoring from last season. Sixteen of the Gusties' 24 players are returners, compared to just eight first-year players. Gustavus will also welcome back three of its four 2013-14 All-MIAC honorees, which include Courtney Boucher, Carolyn Draayer and Allison Eder-Zdechlik.

Gusties In The Polls: Gustavus is ranked sixth in the most recent USCHO.com Division III Women's Hockey Poll, which was released Monday. This week marks the 85th consecutive time that the Gusties have been ranked in the USCHO.com poll.



Gustavus Quick Facts

Location: St. Peter, Minnesota
 Address: 800 West College Ave.
 St. Peter, MN 56082
 Founded: 1862
 Enrollment: 2,455
 Nickname: Golden Gusties
 School Colors: Black and Gold
 Home Ice: Don Roberts Ice Rink
 NCAA Affiliation: NCAA Division III
 Conference: Minnesota Intercollegiate Athletic
 President: Rebecca M. Bergman
 Athletic Director: Tom Brown
 Assistant Athletic Director: Jared Phillips
 Athletic Trainer: Troy Banse
 Equipment Manager: Jed Friedrich
 Sports Information Director: Ethan Armstrong
 Asst. Sports Information Director: Nick Hoelmer

Gustavus Hockey Quick Facts

2013-14 Record: 17-8-2
 2013-14 MIAC Record/Finish: 14-4-0/2nd
 All-Time Record: 378-99-28
 All-Time MIAC Record: 248-27-12
 MIAC Championships: 12
 Returners/First-years: 16/8
 All-MIAC Honorees Returning/Lost: 3/1

Gustavus Under Head Coach Mike Carroll

Year	Overall	MIAC	Conference Finish
1999-00	18-10-1	12-5-1	3rd
2000-01	23-6-1	16-2-0	1st
2001-02	23-5-2	18-0-1	1st
2002-03	14-9-4	11-4-3	3rd
2003-04	22-6-0	16-2-0	2nd
2004-05	25-4-1	17-1-0	1st
2005-06	22-5-2	17-0-1	1st
2006-07	25-3-0	17-1-0	1st
2007-08	25-3-0	18-0-0	1st
2008-09	22-2-4	16-0-2	1st
2009-10	26-6-2	14-3-1	1st
2010-11	22-5-3	14-2-2	1st
2011-12	24-4-2	16-1-1	1st
2012-13	27-2-1	18-0-0	1st
2013-14	17-8-2	14-4-0	2nd
2014-15	11-2-2	7-0-1	
Totals	342-80-27	241-25-13	11 MIAC Titles

Around The League

MIAC Standings

School	Points	MIAC	Overall
Gustavus	15	7-0-1	11-2-2
St. Thomas	12	5-1-2	6-6-2
Saint Mary's	11	5-2-1	7-6-2
Augsburg	9	4-3-1	6-7-2
Bethel	7	3-4-1	8-6-1
Saint Benedict	7	3-4-1	4-7-1
Concordia	7	3-4-1	4-10-1
St. Catherine	6	2-4-2	4-7-3
Hamline	4	1-5-2	3-10-2
St. Olaf	2	0-6-2	1-12-2

This Weekend in the MIAC

Friday, January 23

St. Olaf at Bethel | 7 p.m.
 Augsburg at Concordia | 7 p.m.
 Saint Benedict at St. Catherine | 7:30 p.m.
 Hamline at St. Thomas | 7:30 p.m.

Saturday, January 24

Augsburg at Concordia | 2 p.m.
 St. Catherine at Saint Benedict | 4:15 p.m.
 St. Thomas at Hamline | 7 p.m.
 Bethel at St. Olaf | 7:30 p.m.

MIAC Athlete-of-the-Week



Tori Herrmann
 Jr., Goalkeeper
 Elk River, Minn./Elk River

Opponent	GA	S	W/L
@Bethel	1	17	W
Bethel	0	24	W

USCHO.com Div. III Poll

Rank	School	Overall	Points	Last
1	Plattsburgh (15)	12-0-2	150	1
2	Elmira	12-1-1	135	2
3	Norwich	10-2-2	109	3
4	Middlebury	8-2-3	95	4
5	Adrian	12-0-3	92	5
6	Gustavus Adolphus	11-2-2	81	6
7	UW-River Falls	13-3-0	64	7
8	Amherst	10-1-3	52	9
9	UW-Stevens Point	12-5-1	28	8
10	Bowdoin	8-3-3	10	10



Gustavus Record When:

At home	7-1-1
On the road	4-0-1
Neutral Site	0-1-0
vs. MIAC opponents	7-0-1
vs. Non-conference opponents	4-2-1
vs. Top 10 opponents	3-2-1
GAC scores 4 or more goals	5-0-1
GAC scores 3 goals	4-0-0
GAC scores 2 or fewer goals	3-2-1
GAC scores first	7-1-1
Opponent scores first	4-1-1
GAC leads after 1st period	5-1-1
Opponent leads after 1st period	1-0-0
Tied after 1st period	4-1-1
GAC leads after 2nd period	5-0-1
Opponent leads after 2nd period	2-0-1
Tied after 2nd period	3-2-0
In overtime	0-1-1
Games decided by one goal	3-2-0
Games decided by two goals	4-0-0
Games decided by three goals	1-0-0
Games decided by four or more	3-0-0
GAC scores on the power play	3-0-0
GAC scoreless on the power play	5-2-2
GAC scores two or more PP goals	3-0-0
GAC outshoots opponent	9-1-1
GAC outshot by opponent	1-1-1
Shots equal	1-0-0
Tuesday Games	1-0-0
Wednesday Games	1-0-0
Friday Games	4-1-0
Saturday Games	5-0-2
Sunday Games	0-1-0
In November	5-1-1
In December	3-0-1
In January	3-1-0
In February	0-0-0
In March	0-0-0
Following a win	7-1-2
Following a loss	2-0-0
Following a tie	1-1-0
Night games	7-1-1
Day games	4-1-1

Who's Hot

Scoring vs. AUG

Player	Games	Goals	Assists	Points	Point Streak
Carolyn Draayer	2	3	1	4	2
Allison Eder-Zdechlik	2	1	3	4	5
Rachel Skoglund	2	1	2	3	2
Marissa Brandt	2	1	1	2	2

Goaltending vs. AUG

Player	Record	Minutes	GA	Saves	Scoreless Str.
Lindsey Hibbard	2-0-0	120:00	1	28	11:18

2014-15 Season By The Numbers

Largest Victory	5 (2X) Last: vs. Augsburg (1/16/15)
Largest Defeat	1 (2X) Last: vs. Adrian (1/9/15)
Largest First Period Lead	2 vs. Hamline (11/21/14)
Largest First Period Deficit	1 (2x) last: vs. UW-Stevens Point (12/13/14)
Largest Second Period Lead	3 (3x) Last: vs. Augsburg (1/16/15)
Largest Second Period Deficit	2 vs. Plattsburgh (11/29/14)
Most Goals Scored	7 vs. St. Olaf (12/5/14)
Fewest Goals Scored	0 vs. Adrian (1/9/15)
Most Goals Allowed	4 vs. Plattsburgh (11/29/14)
Fewest Goals Allowed	0 (2x) Last: vs. Hamline (11/21/14)
Largest Lead	5 (2X) Last: vs. Augsburg (1/16/15)
Largest Lead On Road	5 vs. St. Olaf (12/5/14)
Largest Lead At Home	5 vs. Augsburg (1/16/15)
Largest Blown Lead	1 vs. Middlebury (11/30/14)
Largest Deficit	3 vs. Plattsburgh (11/29/14)
Largest Deficit On Road	3 vs. Plattsburgh (11/29/14)
Largest Deficit At Home	1 vs. Adrian (1/9/15)
Largest Comeback-Win/Tie	3 vs. Plattsburgh=Tie (11/29/14)



Last Time It Happened

COMEBACKS

GAC won when trailing after two periods

December 13, 2014 vs. UW-Stevens Point. Trailed 1-0 early in the third, Gustavus scored three consecutive goals to capture a 3-1 victory.

Opponent won when trailing after two periods

Feb. 1, 2014 vs. Saint Benedict. Blazers trailed 2-1 after two periods, but scored three in the third to capture a 4-2 win.

Overcame 1-goal deficit and won

GAC: January 17, 2015 at Augsburg. Trailed 1-0 early in the third, Gustavus scored two consecutive goals to capture 2-1 victory.

OPP: Nov. 30, 2014 vs. Middlebury. Trailed 1-0 in first period, won 3-2

Overcame 2-goal deficit and won

GAC: Feb. 29, 2013 vs. Bethel. Gusties trailed 2-0 after two, but came back with three goals in the third for a 3-2 win.

OPP: Feb. 1, 2014 vs. Saint Benedict. Blazers trailed 2-0 in second period, but scored four unanswered goals to capture a 4-2 win.

Overcame a 3-goal deficit and won

GAC: March 1, 1998 vs. University of Minnesota Club. Gusties scored one in the second and three in the third to win 4-3.

OPP: Never

OVERTIME GAMES

Won overtime game

GAC: March 1, 2012 vs Bethel. Courtney Boucher scored 6:25 in to overtime to win 1-0 and advance to the MIAC Championship.

OPP: Nov. 30, 2014 vs. Middlebury

Tied overtime game

Nov. 29, 2014 at Plattsburgh (4-4)

SERIES SWEEPS

Swept a 2-game regular season home and away series

GAC: Jan. 16-17, 2015 vs. Augsburg. (5-0 Friday in St. Peter, 2-1 Saturday in Minneapolis)

OPP: Jan. 31-Feb. 1, 2014 vs. Saint Benedict. (4-2 Friday night in St. Peter, 4-2 again on Saturday in St. Cloud)

Swept a 2-game regular season home series

GAC: Nov. 14-15, 2014 vs. Concordia. (3-1, 2-0)

OPP: Never

Swept a 2-game regular season away series

GAC: Nov. 15-16, 2013 at Concordia. (4-1, 2-0)

OPP: Never. (MIAC Playoffs: March 10-11, 2000 at Augsburg. (4-1, 2-1)

SHUTOUTS

Last Shutout

GAC: Jan. 16, 2015 vs. Augsburg, 5-0

OPP: Jan. 9, 2015 vs. Adrian, 1-0

Last Home Shutout

GAC: Jan. 16, 2015 vs. Augsburg, 5-0

OPP: Jan. 9, 2015 vs. Adrian 1-0

Last Road Shutout

GAC: Nov. 22, 2014 at Hamline 4-0.

OPP: Mar. 8, 2014 vs. St. Thomas 2-0

Scoreless Ties (2 in program history)

Jan. 14, 2010 vs. Trinity (Conn.)

Feb. 17, 2009 at UW-Stevens Point

EXTRA ATTACKER GOALS

Scored an extra attacker goal

GAC: Nov. 30, 2014 vs. Middlebury. Lydia Wagner scored w/ 39 sec. left

OPP: Jan. 9, 2005 at UW-River Falls. Gusties won 6-4.

SHORTHANDED GOALS

Scored a shorthanded goal

GAC: Jan. 16, 2015 vs. Augsburg. Allison Eder-Zdechlik scored shorthanded goal in second period to put Gustavus up 3-0.

OPP: Jan. 10, 2014 at UW-Stevens Point. Cassandra Salmen scored shorthanded in the third period of a 5-2 win for the Pointers.

Scored two shorthanded goals

GAC: Nov. 22, 2008 at St. Olaf. Melissa Mackley scored two short-handed goals in the third period. Gusties won 4-2.

OPP: Never

EMPTY NET GOALS

Scored an empty net goal

GAC: Dec. 13, 2014 vs. UW-Stevens Point. Allison Eder-Zdechlik scored EN at 19:46 of a 3-1 win for the Gusties in St. Peter.

OPP: Feb. 15, 2014 vs. St. Thomas. Karina Marette scored EN at 19:47 of a 3-1 Tommie win in Mendota Heights.

TEAM GOALS IN A PERIOD

Team scored 5 or more goals in a period

GAC: Feb. 23, 2013 vs. Saint Benedict. The Gusties scored six goals in the second period on their way to an 8-2 victory in St. Peter.

OPP: Dec. 3, 1998 at the University of Minnesota (Mariucci Arena. Gophers scored five goals in the first period and won 8-1.

PENALTY SHOTS

Scored on a penalty shot

GAC: Never.

OPP: March 19, 2011 vs. Middlebury (NCAA 3rd Place Game, Rochester, N.Y.). Penalty shot goal scored after Lindsey Hjelm checking penalty in the second period. Middlebury won 5-0.

PENALTIES

Not penalized

GAC: Dec. 1, 2012 at Augsburg. GAC won 3-1.

OPP: Dec. 2, 2000 at St. Catherine. St. Kate's won 4-3.

Neither team was penalized

Jan. 30, 1998 at Saint Mary's. Gusties won 6-2.

HAT TRICKS

Last individual 3-goal game

GAC: Jan. 26, 2013 vs. Concordia. Lindsey Hjelm scored three goals (all even) in a 5-1 Gustavus win in St. Peter.

OPP: Jan. 10, 2014 at UW-Stevens Point. Cassandra Salmen scored three goals in the third period of a 5-2 Pointer win.

Last individual 4-goal game

GAC: Dec. 2, 2011 at Augsburg. Allie Schwab scored three PP goals and an even goal in a 9-0 shutout. OPP: Never.

All goals scored by one player (3+ Goals)

GAC: Never.

OPP: Dec. 2, 2006 at Hamline. Melanie Levielle scored all three goals in a 4-3 loss.

SHOTS ON GOAL

Fewer than 15 shots in a game

GAC: Dec. 3, 1998 at the University of Minnesota, 11 shots. Minnesota won 8-1.

OPP: Jan. 16, 2015 vs. Augsburg, 10 shots. Gustavus won 5-0.

Fewer than 20 shots in a game

GAC: Jan. 9, 2015 vs. Adrian, 17 shots. Gustavus lost 1-0.

OPP: Jan. 17, 2015 vs. Augsburg, 19 shots. Gustavus won 2-1.

40 or more shots in a game

GAC: Dec. 13, 2014 vs. UW-Stevens Point, 42 shots. Gustavus won 3-1.

OPP: Nov. 29, 2014 at Plattsburgh, 42 shots. Tied 4-4.

50 or more shots in a game

GAC: Feb. 16, 2013 vs. St. Olaf, 51 shots. Gustavus won 6-2.

OPP: Nov. 23, 1998 vs. the University of Minnesota: 51 shots. Minnesota won 6-0.

60 or more shots in a game

GAC: Feb. 15, 2013 at St. Olaf, 61 shots. Gustavus won 7-4.

OPP: Feb. 5, 1998 at Boston College, 65 shots. BC won 10-1.

SINGLE GAME POINTS

Player had four points in a game

GAC: Dec. 5, 2014 at St. Olaf. Erica Power scored two goals, two assists. Diana Draayer scored one goal, three assists in same game. OPP: Mar. 18, 2011 vs. Norwich (NCAA Semifinals). Julie Fortier scored three goals with an assist in a 5-4 Norwich victory.

Player had five points in a game

GAC: Dec. 2, 2011 at Augsburg. Allie Schwab scored three PP goals and an even goal with an assist in a 9-0 shutout. OPP: Mar. 18, 2005 vs. Middlebury. (NCAA Semifinals) Lorna Griffs scored two goals with three assists in a 7-3 Middlebury win.

Player had six or more points in a game

GAC: Feb. 11, 2005 at St. Catherine. Andrea Peterson scored two goals with six assists in a 13-0 win. (Most individual points in a game in program history)

OPP: Jan. 30, 1999 at Middlebury. Michelle Labbe scored three goals with three assists in a 8-0 Middlebury win.



Carroll At A Glance

Hometown

- Edina, Minnesota

Education

- Bachelor's Degree: Recreation, Parks, and Leisure Services (Minnesota State, Mankato '82)

Family

- Wife: Terri
- Children: Matt and Mike

Coaching

- 1983-84 – Assistant Coach, University of St. Thomas
- 1984-85 – Assistant Coach, Fergus Falls High School
- 1986-87 – Head Coach, Fergus Falls Community College
- 1990-99 – Head Coach, Mankato West High School
- 1999-Present – Head Coach, Gustavus Adolphus College

Years At Gustavus: 15

All-time Record: 342-80-27

All-time MIAC Record: 241-25-13

MIAC Titles: 11

MIAC Playoff Titles: 11

NCAA Tournaments: 11

NCAA Tournament Record: 8-16-0

Final Fours: 7

Most Wins In A Season: 27 (2012-13)

Fewest Wins In A Season: 14 (2002-03)

*** All-time winningest coach in Gustavus women's hockey history.

Head Coach Mike Carroll

Mike Carroll is in his 16th season as the women's head hockey coach at Gustavus. Within his tenure behind the Gustie bench, Carroll has turned Gustavus women's hockey into one of the most successful programs in NCAA Division III. He has compiled an overall record of 342-80-27 in 15 seasons and has the most coaching victories in the history of the program.

Last season, the Gustavus women's hockey team saw its reign atop the Minnesota Intercollegiate Athletic Conference (MIAC) come to an end. The Gusties finished second in the final conference standings with 28 points at 14-4-0, ending their streak of consecutive MIAC Championships at nine. After defeating Bethel 3-2 in the MIAC Playoff Semifinals, Gustavus's season concluded with a 2-0 loss to regular season champion St. Thomas in the MIAC Playoff Championship. The postseason defeat suffered to the Tommies ended Head Coach Mike Carroll's run of 10 consecutive MIAC Playoff titles and trips to the NCAA Tournament. The Gusties finished the year with an overall record of 17-8-2.

Carroll has directed the Gusties to 11 MIAC regular season titles (2000-01, 2001-02, 2004-05, 2005-06, 2006-07, 2007-08, 2008-09, 2009-10, 2010-11, 2011-12, 2012-13) and has been named the MIAC Coach-of-the-Year six times (2001-02, 2003-04, 2004-05, 2005-06, 2010-11, 2012-13). In addition to coaching 34 players who have earned All-Conference honors 59 times, he has coached five MIAC Players-of-the-Year in Sarah Garrison, Andrea Peterson, Stefanie Ubl, Allie Schwab, Lindsey Hjelm. Carroll has also worked with 13 players who have earned AHCA All-America distinction 21 times and two American Hockey Coaches Association Players-of-the-Year, including four-time MIAC Player-of-the-Year and four-time All-American Andrea Peterson.

Prior to coming to Gustavus, Carroll served as the head boys' hockey coach at Mankato West High School from 1991 to 1999. Carroll's college coaching resume included a stint as head men's hockey coach at Fergus Falls Community College from 1986 to 1987 as well as a season as the assistant men's coach at the University of St. Thomas in 1983.

Carroll, an Edina, Minnesota native, competed in hockey and baseball at Mankato State. After graduating with a degree in municipal recreation in 1982, Carroll played professional baseball in the Montreal Expos organization for two years.

In addition to his hockey coaching duties at Gustavus, Carroll is also the head coach of the Golden Gustie baseball team. Mike and his wife, Terri, live in Mankato and have two sons, Matt and Mike.

2014-15 Roster

Breakdown

Returners (16)

Courtney Bethune
 Courtney Boucher
 Marissa Brandt
 Carolyn Draayer
 Allison Eder-Zdechlik
 Emily Gustafson
 Hannah Heacox
 Lindsey Hibbard
 Callie Johnson
 Leah Johnson
 Amanda Koep
 Allie Lewis
 Keri Pickel
 Courtney Potter
 Emily Reibert
 Lydia Wagner

Newcomers (8)

Katie Aney
 Diana Draayer
 Katy Fuller
 Laura Johnson
 Kaitlyn Klein
 Erica Power
 Ashley Ritten
 Rachel Skoglund

By Class

Seniors (5)

Courtney Boucher
 Marissa Brandt
 Carolyn Draayer
 Leah Johnson
 Keri Pickel

Juniors (4)

Allison Eder-Zdechlik
 Lindsey Hibbard
 Amanda Koep
 Emily Reibert

Sophomores (7)

Courtney Bethune
 Emily Gustafson
 Hannah Heacox
 Callie Johnson
 Allie Lewis
 Courtney Potter
 Lydia Wagner

First-Years (8)

Katie Aney
 Diana Draayer
 Katy Fuller
 Laura Johnson
 Kaitlyn Klein
 Erica Power
 Ashley Ritten
 Rachel Skoglund

2014-15 Numerical Roster

No.	Name	Yr.	Pos.	Hgt.	Hometown/High School
1	Lindsey Hibbard	Jr.	G	5-6	Princeton, Minn./Princeton
2	Courtney Bethune	So.	D	5-8	Fort Frances, Ont./Warroad
3	Emily Reibert	Jr.	F	5-5	Inver Grove Heights, Minn./South St. Paul
4	Diana Draayer	Fy.	F	5-5	Deephaven, Minn./Minnetonka
5	Rachel Skoglund	Fy.	D	5-2	Forest Lake, Minn./Forest Lake
6	Emily Gustafson	So.	F	5-1	Esko, Minn./Esko
7	Lydia Wagner	So.	D	5-7	Zumbrota, Minn./Zumbrota-Mazeppa
8	Allison Eder-Zdechlik	Jr.	F	5-4	Stillwater, Minn./Stillwater
9	Erica Power	Fy.	F	5-6	Lakeville, Minn./Apple Valley
10	Courtney Boucher	Sr.	F/D	5-7	Hastings, Minn./Hastings
11	Keri Pickel	Sr.	F	5-2	Rochester, Minn./Mayo
12	Hannah Heacox	So.	F	5-3	Stillwater, Minn./Stillwater
13	Katie Aney	Fy.	F	5-8	Rochester, Minn./Century
14	Katy Fuller	Fy.	F	5-5	Minneapolis, Minn./Southwest
15	Leah Johnson	Sr.	F	5-4	Chanhassen, Minn./Chaska
17	Callie Johnson	So.	F	5-7	Detroit Lakes, Minn./Detroit Lakes
18	Carolyn Draayer	Sr.	F	5-6	Deephaven, Minn./Minnetonka
19	Allie Lewis	So.	F	5-3	Kearney, Neb./Shattuck-St. Mary's
20	Kaitlyn Klein	Fy.	F	5-6	Plymouth, Minn./Wayzata
22	Marissa Brandt	Sr.	F/D	5-6	Vadnais Heights, Minn./Hill-Murray
23	Laura Johnson	Fy.	D	5-5	Chanhassen, Minn./Chanhassen
24	Courtney Potter	So.	D	5-2	Dayton, Minn./Champlin Park
33	Ashley Ritten	Fy.	G	5-6	Robbinsdale, Minn./Robbinsdale Armstrong
35	Amanda Koep	Jr.	G	5-5	St. Michael, Minn./St. Michael-Albertville

Head Coach: Mike Carroll (16th season)

Assistant Coaches: Amanda Trunzo, Steve Carroll

Alphabetical Roster/Pronunciation Guide

NO.	NAME	Pronunciation
13	Aney, Katie	
2	Bethune, Courtney	beth-OON
10	Boucher, Courtney	BOO-shay
22	Brandt, Marissa	
18	Draayer, Carolyn	DRAY-er
4	Draayer, Diana	DRAY-er
8	Eder-Zdechlik, Allison	ee-der-ZED-lick
14	Fuller, Katy	
6	Gustafson, Emily	GUST-uhf-son
12	Heacox, Hannah	HEE-cox
1	Hibbard, Lindsey	
23	Johnson, Laura	
15	Johnson, Leah	
17	Johnson, Callie	
20	Klein, Kaitlyn	
35	Koep, Amanda	COPE
19	Lewis, Allie	
11	Pickel, Keri	
9	Power, Erica	
24	Potter, Courtney	
3	Reibert, Emily	RYE-bert
33	Ritten, Ashley	
5	Skoglund, Rachel	SKOHG-lund
7	Wagner, Lydia	

Player Profiles



#1 Lindsey Hibbard
Jr., Goaltender
Princeton, Minn./Princeton

Season Numbers

GP	GAA	Save Pct.	Record
14	1.26	.942	9-2-2



#2 Courtney Bethune
So., Defender
Fort Frances, Ont./Warroad

Season Numbers

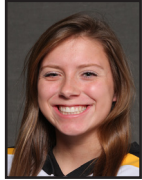
GP	Goals	Assists	Points
15	0	0	0



#3 Emily Reibert
Jr., Forward
Inver Grove Heights, Minn./South St. Paul

Season Numbers

GP	Goals	Assists	Points
14	5	2	7



#4 Diana Draayer
Fy., Forward
Deephaven, Minn./Minnetonka

Season Numbers

GP	Goals	Assists	Points
15	2	9	11



#5 Rachel Skoglund
Fy., Defender
Forest Lake, Minn./Forest Lake

Season Numbers

GP	Goals	Assists	Points
14	2	4	6



#6 Emily Gustafson
So., Forward
Esko, Minn./Esko

Season Numbers

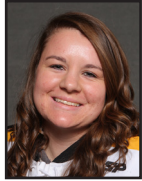
GP	Goals	Assists	Points
15	0	2	2



#7 Lydia Wagner
So., Defender
Zumbrota, Minn./Zumbrota-Mazeppa

Season Numbers

GP	Goals	Assists	Points
15	2	2	4



#8 Allison Eder-Zdechlik
Jr., Forward
Stillwater, Minn./Stillwater

Season Numbers

GP	Goals	Assists	Points
11	8	5	13



#9 Erica Power
Fy., Forward
Lakeville, Minn./Apple Valley

Season Numbers

GP	Goals	Assists	Points
15	5	10	15

Player Profiles



#10 Courtney Boucher
Sr., Forward/Defender
Hastings, Minn./Hastings

Season Numbers

GP	Goals	Assists	Points
15	2	5	7



#11 Keri Pickel
Sr., Forward
Rochester, Minn./Mayo

Season Numbers

GP	Goals	Assists	Points
15	2	2	4



#12 Hannah Heacox
So., Forward
Stillwater, Minn./Stillwater

Season Numbers

GP	Goals	Assists	Points
4	0	0	0



#13 Katie Aney
Fy., Forward
Rochester, Minn./Century

Season Numbers

GP	Goals	Assists	Points
15	4	0	4



#14 Katy Fuller
Fy., Forward
Minneapolis, Minn./Southwest

Season Numbers

GP	Goals	Assists	Points
15	2	2	4



#15 Leah Johnson
Sr., Forward
Chanhassen, Minn./Chanhassen

Season Numbers

GP	Goals	Assists	Points
13	0	2	2



#17 Callie Johnson
So., Forward
Detroit Lakes, Minn./Detroit Lakes

Season Numbers

GP	Goals	Assists	Points
3	0	1	1



#18 Carolyn Draayer
Sr., Forward
Deephaven, Minn./Minnetonka

Season Numbers

GP	Goals	Assists	Points
15	8	3	11

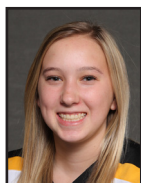


#19 Allie Lewis
So., Forward
Kearney, Neb./Shattuck-St. Mary's

Season Numbers

GP	Goals	Assists	Points
15	0	1	1

Player Profiles



#20 Kaitlyn Klein
 Fr., Forward
 Plymouth, Minn./Wayzata

Season Numbers

GP	Goals	Assists	Points
15	3	3	6



#22 Marissa Brandt
 Sr., Forward/Defender
 Vadnais Heights, Minn./Hill-Murray

Season Numbers

GP	Goals	Assists	Points
15	2	2	4



#23 Laura Johnson
 Fr., Defender
 Chanhassen, Minn./Chanhassen

Season Numbers

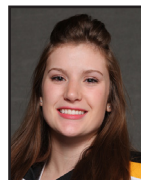
GP	Goals	Assists	Points
11	0	1	1



#24 Courtney Potter
 So., Defender
 Dayton, Minn./Champlin Park

Season Numbers

GP	Goals	Assists	Points
5	0	0	0



#33 Ashley Ritten
 Fr., Goaltender
 Robbinsdale, Minn./Robbinsdale Armstrong

Season Numbers

GP	GAA	Save Pct.	Record
0	---	---	0-0-0



#35 Amanda Koep
 Jr., Goaltender
 St. Michael, Minn./St. Michael-Albertville

Season Numbers

GP	GAA	Save Pct.	Record
2	2.38	.852	2-0-0

**Gustavus Adolphus Hockey
Gustavus Adolphus Overall Team Statistics (as of Jan 22, 2015)
All games**

Overall: 11-2-2 Conf: 7-0-1 Home: 7-1-1 Away: 4-0-1 Neut: 0-1-0

TEAM STATISTICS	GAC	OPP
SHOT STATISTICS		
Goals-Shot attempts	47-507	21-322
Shot pct.	.093	.065
Goals/Game	3.1	1.4
Shots/Game	33.8	21.5
Assists	56	30
POWER PLAYS		
Goals-Power Plays	10-63	5-43
Conversion Percent	.159	.116
Shot Attempts	117	62
Shot Percent	.085	.081
SHORT-HANDED		
Goals-Shot attempts	2-14	0-21
Shot Percent	.143	.000
GOAL BREAKDOWN		
Total Goals	47	21
Power Play	10	5
Short-handed	2	0
Empty net	1	0
Penalty	0	0
Unassisted	8	2
Overtime	0	1
Shootout	0	0
Delayed Penalty	0	0
PENALTIES		
Number	52	69
Minutes	104	138
Penalties/Game	3.5	4.6
Pen minutes/Game	6.9	9.2
Minor	52	69
Major	0	0
10-minute Misconduct	0	0
Game Misconduct	0	0
Gross Misconduct	0	0
Match	0	0
FACEOFFS (W-L)	453-304	304-453
Faceoff W-L Pct.	.598	.402
SHOOTOUTS (Made-Att)	1-4	2-4
ATTENDANCE		
Total	865	1113
Dates/Avg Per Date	9/96	5/223
Neutral Site #/Avg	1/120	

Goals by Period	1st	2nd	3rd	OT	Total
Gustavus Adolphus	10	14	23	0	47
Opponents	4	9	7	1	21

Shots by Period	1st	2nd	3rd	OT	Total
Gustavus Adolphus	162	174	166	5	507
Opponents	103	117	98	4	322

Saves by Period	1st	2nd	3rd	OT	Total
Gustavus Adolphus	99	108	91	3	301
Opponents	152	160	142	5	459

Gustavus Adolphus Hockey
Gustavus Adolphus Category Leaders (as of Jan 22, 2015)
All games

##	Points	GP	G	A	Pts	Sh
9	Erica Power	15	5	10	15	56
8	A. Eder-Zdechlik	11	8	5	13	41
18	Carolyn Draayer	15	8	3	11	67
4	Diana Draayer	15	2	9	11	34
3	Emily Reibert	14	5	2	7	26
10	Courtney Boucher	15	2	5	7	51
20	Kaitlyn Klein	15	3	3	6	28
5	Rachel Skoglund	14	2	4	6	19
13	Katie Aney	15	4	0	4	29
22	Marissa Brandt	15	2	2	4	10

##	Goals	GP	G	A	Pts	Sh
8	A. Eder-Zdechlik	11	8	5	13	41
18	Carolyn Draayer	15	8	3	11	67
9	Erica Power	15	5	10	15	56
3	Emily Reibert	14	5	2	7	26
13	Katie Aney	15	4	0	4	29
20	Kaitlyn Klein	15	3	3	6	28
4	Diana Draayer	15	2	9	11	34
10	Courtney Boucher	15	2	5	7	51
5	Rachel Skoglund	14	2	4	6	19
22	Marissa Brandt	15	2	2	4	10

##	Power-Play Goals	GP	PPG
18	Carolyn Draayer	15	3
13	Katie Aney	15	2

##	Short-Handed Goals	GP	SHG
8	A. Eder-Zdechlik	11	2

##	Game-Winning Goals	GP	GWG
8	A. Eder-Zdechlik	11	2
18	Carolyn Draayer	15	2

##	Plus/Minus	GP	+/-
8	A. Eder-Zdechlik	11	+14
10	Courtney Boucher	15	+13
9	Erica Power	15	+12
2	Courtney Bethune	15	+9
5	Rachel Skoglund	14	+8
20	Kaitlyn Klein	15	+7
23	Laura Johnson	11	+6
18	Carolyn Draayer	15	+5
4	Diana Draayer	15	+5
3	Emily Reibert	14	+5

##	Assists	GP	G	A	Pts	Sh
9	Erica Power	15	5	10	15	56
4	Diana Draayer	15	2	9	11	34
8	A. Eder-Zdechlik	11	8	5	13	41
10	Courtney Boucher	15	2	5	7	51
5	Rachel Skoglund	14	2	4	6	19
18	Carolyn Draayer	15	8	3	11	67
20	Kaitlyn Klein	15	3	3	6	28
3	Emily Reibert	14	5	2	7	26
22	Marissa Brandt	15	2	2	4	10
14	Katy Fuller	15	2	2	4	23

##	Shots	GP	G	A	Pts	Sh	Sh%
18	Carolyn Draayer	15	8	3	11	67	.119
9	Erica Power	15	5	10	15	56	.089
10	Courtney Boucher	15	2	5	7	51	.039
8	A. Eder-Zdechlik	11	8	5	13	41	.195
4	Diana Draayer	15	2	9	11	34	.059
13	Katie Aney	15	4	0	4	29	.138
7	Lydia Wagner	15	2	2	4	29	.069
20	Kaitlyn Klein	15	3	3	6	28	.107
3	Emily Reibert	14	5	2	7	26	.192
14	Katy Fuller	15	2	2	4	23	.087

##	Shot Pct.	GP	G	A	Pts	Sh	Sh%
22	Marissa Brandt	15	2	2	4	10	.200
8	A. Eder-Zdechlik	11	8	5	13	41	.195
3	Emily Reibert	14	5	2	7	26	.192
13	Katie Aney	15	4	0	4	29	.138
18	Carolyn Draayer	15	8	3	11	67	.119
20	Kaitlyn Klein	15	3	3	6	28	.107
5	Rachel Skoglund	14	2	4	6	19	.105
11	Keri Pickel	15	2	2	4	21	.095
9	Erica Power	15	5	10	15	56	.089
14	Katy Fuller	15	2	2	4	23	.087

##	Penalties	GP	Pen	Min
23	Laura Johnson	11	6	12
3	Emily Reibert	14	5	10
7	Lydia Wagner	15	4	8
14	Katy Fuller	15	4	8
4	Diana Draayer	15	4	8
10	Courtney Boucher	15	4	8
5	Rachel Skoglund	14	3	6
2	Courtney Bethune	15	3	6
22	Marissa Brandt	15	3	6
13	Katie Aney	15	3	6

##	Penalty Minutes	GP	Pen	Min
23	Laura Johnson	11	6	12
3	Emily Reibert	14	5	10
4	Diana Draayer	15	4	8
10	Courtney Boucher	15	4	8
14	Katy Fuller	15	4	8
7	Lydia Wagner	15	4	8
5	Rachel Skoglund	14	3	6
2	Courtney Bethune	15	3	6
22	Marissa Brandt	15	3	6
13	Katie Aney	15	3	6

**Gustavus Adolphus Hockey
Gustavus Adolphus Combined Team Statistics (as of Jan 22, 2015)
All games**

Date	Opponent	Score	Att.
Nov 04	#9 UW-SUPERIOR	w 3-1	123
* Nov 14	CONCORDIA COLLEGE	w 3-1	111
* Nov 15	CONCORDIA COLLEGE	w 2-0	73
* Nov 21	HAMLIN UNIVERSITY	w 6-3	143
* Nov 22	at Hamline University	w 4-0	164
Nov 29	at Plattsburgh State	Tot 4-4	381
Nov 30	vs #5 Middlebury	Lot 2-3	120
* Dec 05	at St. Olaf	w 7-2	163
* Dec 06	ST. OLAF	Tot 1-1	97
Dec 10	at #6 UW-River Falls	w 3-2	183
Dec 13	UW-STEVENS POINT	w 3-1	97
Jan 09	ADRIAN	L 0-1	57
Jan 10	LAKE FOREST	w 2-1	85
* Jan 16	AUGSBURG	w 5-0	79
* 01/17/15	at Augsburg	w 2-1	222

TEAM STATISTICS	GAC	OPP
SHOT STATISTICS		
Goals-Shot attempts	47-507	21-322
Shot pct.	.093	.065
Goals/Game	3.1	1.4
Shots/Game	33.8	21.5
POWER PLAYS		
Goals-Power Plays	10-63	5-43
Conversion Percent	.159	.116
Shot Attempts	117	62
Shot Percent	.085	.081
SHORT-HANDED		
Goals-Shot attempts	2-14	0-21
Shot Percent	.143	.000
GOAL BREAKDOWN		
Power Play	10	5
Short-handed	2	0
Empty net	1	0
Penalty	0	0
Unassisted	8	2
Overtime	0	1
Shootout	0	0
Delayed Penalty	0	0
PENALTIES		
Number	52	69
Minutes	104	138
Penalties/Game	3.5	4.6
Pen minutes/Game	6.9	9.2
FACEOFFS (W-L)	453-304	304-453
Faceoff W-L Pct.	.598	.402
SHOOTOUTS (Made-Att)	1-4	2-4

Record:	Overall	Home	Away	Neutral
ALL GAMES	11-2-2	7-1-1	4-0-1	0-1-0
CONFERENCE	7-0-1	4-0-1	3-0-0	0-0-0
NON-CONFERENCE	4-2-1	3-1-0	1-0-1	0-1-0

#	Player	gp	g	a	pts	sh	sh%	pen-min	pp	sh
9	Erica Power	15	5	10	15	56	.089	2-4	1	0
8	A. Eder-Zdechlik	11	8	5	13	41	.195	1-2	0	2
18	Carolyn Draayer	15	8	3	11	67	.119	3-6	3	0
4	Diana Draayer	15	2	9	11	34	.059	4-8	1	0
3	Emily Reibert	14	5	2	7	26	.192	5-10	1	0
10	Courtney Boucher	15	2	5	7	51	.039	4-8	0	0
20	Kaitlyn Klein	15	3	3	6	28	.107	0-0	0	0
5	Rachel Skoglund	14	2	4	6	19	.105	3-6	0	0
13	Katie Aney	15	4	0	4	29	.138	3-6	2	0
22	Marissa Brandt	15	2	2	4	10	.200	3-6	1	0
14	Katy Fuller	15	2	2	4	23	.087	4-8	0	0
11	Keri Pickel	15	2	2	4	21	.095	1-2	0	0
7	Lydia Wagner	15	2	2	4	29	.069	4-8	1	0
6	Emily Gustafson	15	0	2	2	14	.000	2-4	0	0
15	Leah Johnson	13	0	2	2	6	.000	2-4	0	0
17	Callie Johnson	3	0	1	1	1	.000	0-0	0	0
23	Laura Johnson	11	0	1	1	17	.000	6-12	0	0
19	Allie Lewis	15	0	1	1	10	.000	0-0	0	0
2	Courtney Bethune	15	0	0	0	17	.000	3-6	0	0
12	Hannah Heacox	4	0	0	0	4	.000	1-2	0	0
24	Courtney Potter	5	0	0	0	4	.000	0-0	0	0
TM	TEAM	3	0	0	0	0	.000	1-2	0	0
	Total	15	47	56	103	507	.093	52-104	10	2
	Opponents	15	21	30	51	322	.065	69-138	5	0

#	Goalie	gp	min	ga	gaavg	saves	save%	w-l-t
1	Lindsey Hibbard	14	809:21	17	1.26	278	.942	9-2-2
35	Amanda Koep	2	100:50	4	2.38	23	.852	2-0-0
TM	EMPTY NET	3	0:58	0	-	0	.000	0-0-0
	Total	15	911:09	21	1.38	301	.935	11-2-2
	Opponents	15	911:09	47	3.09	459	.907	2-11-2

Attendance Summary	GAC	Opponent
Total	865	1113
Dates/Avg Per Date	9/96	5/223
Neutral Site #/Avg	1/120	

Goals by Period	1st	2nd	3rd	OT	Total
Gustavus Adolphus	10	14	23	0	47
Opponents	4	9	7	1	21

Shots by Period	1st	2nd	3rd	OT	Total
Gustavus Adolphus	162	174	166	5	507
Opponents	103	117	98	4	322

Saves by Period	1st	2nd	3rd	OT	Total
Gustavus Adolphus	99	108	91	3	301
Opponents	152	160	142	5	459

**Gustavus Adolphus Hockey
Gustavus Adolphus Game Results (as of Jan 22, 2015)
All games**

Date	Opponent	Score	Shots	Overall	Conf	Time	Att.	Goalie of record
Nov 04	#9 UW-SUPERIOR	W 3-1	29/23	1-0-0	0-0-0	2:08	123	Lindsey Hibbard
* Nov 14	CONCORDIA COLLEGE	W 3-1	42/30	2-0-0	1-0-0	2:05	111	Lindsey Hibbard
* Nov 15	CONCORDIA COLLEGE	W 2-0	44/18	3-0-0	2-0-0	1:54	73	Lindsey Hibbard
* Nov 21	HAMLIN UNIVERSITY	W 6-3	39/11	4-0-0	3-0-0	1:52	143	Amanda Koep
* Nov 22	at Hamline University	W 4-0	47/19	5-0-0	4-0-0	2:00	164	Lindsey Hibbard
Nov 29	at Plattsburgh State	Tot 4-4	26/42	5-0-1	4-0-0	2:12	381	Lindsey Hibbard
Nov 30	vs #5 Middlebury	Lot 2-3	38/28	5-1-1	4-0-0	2:03	120	Lindsey Hibbard
* Dec 05	at St. Olaf	W 7-2	36/12	6-1-1	5-0-0	1:52	163	Lindsey Hibbard
* Dec 06	ST. OLAF	Tot 1-1	41/13	6-1-2	5-0-1	2:06	97	Lindsey Hibbard
Dec 10	at #6 UW-River Falls	W 3-2	22/29	7-1-2	5-0-1	1:58	183	Lindsey Hibbard
Dec 13	UW-STEVENS POINT	W 3-1	42/16	8-1-2	5-0-1	2:02	97	Lindsey Hibbard
Jan 09	ADRIAN	L 0-1	17/32	8-2-2	5-0-1	2:09	57	Lindsey Hibbard
Jan 10	LAKE FOREST	W 2-1	20/20	9-2-2	5-0-1	1:56	85	Amanda Koep
* Jan 16	AUGSBURG	W 5-0	38/10	10-2-2	6-0-1	1:53	79	Lindsey Hibbard
* 01/17/15	at Augsburg	W 2-1	26/19	11-2-2	7-0-1	1:55	222	Lindsey Hibbard

Team Record	W-L-T	Attendance	Dates	Total	Avg.
Overall:	11-2-2	Total:	15	2098	140
Conference:	7-0-1	Home:	9	865	96
Home:	7-1-1	Away:	5	1113	223
Away:	4-0-1	Neutral:	1	120	120
Neutral:	0-1-0				
Overtime:	0-1-2				