

# GUSTAVUS ADOLPHUS COLLEGE

## 2014-15 WOMEN'S BASKETBALL

### 2013-14 SCHEDULE/RESULTS

DATE	OPPONENT	TIME/RESULT
11/8	<b>CROWN COLLEGE</b>	<b>W 81-31</b>
11/9	<b>MARTIN LUTHER</b>	<b>W 74-58</b>
11/22	<b>MINNESOTA MORRIS</b>	<b>W 82-67</b>
11/29	University of Dubuque#	L 76-78
11/30	College of St. Scholastica#	W 71-58
12/3	University of St. Thomas*	7:00 p.m.
12/6	<b>ST. CATHERINE UNIVERSITY*</b>	<b>1:00 p.m.</b>
12/13	<b>HAMLIN UNIVERSITY*</b>	<b>1:00 p.m.</b>
12/20	University of Northwestern	3:00 p.m.
12/30	UW-River Falls	7:00 p.m.
1/3	St. Olaf College*	1:00 p.m.
1/7	Augsburg College*	7:00 p.m.
1/10	Saint Mary's University*	1:00 p.m.
1/14	<b>CONCORDIA COLLEGE*</b>	<b>5:45 p.m.</b>
1/17	College of Saint Benedict*	3:00 p.m.
1/21	<b>BETHEL UNIVERSITY*</b>	<b>7:00 p.m.</b>
1/24	St. Catherine University*	3:00 p.m.
1/28	<b>UNIVERSITY OF ST. THOMAS*</b>	<b>7:00 p.m.</b>
1/31	Hamline University*	1:00 p.m.
2/4	Carleton College*	7:00 p.m.
2/7	<b>ST. OLAF COLLEGE*</b>	<b>1:00 p.m.</b>
2/11	Concordia College*	5:45 p.m.
2/14	<b>SAINT MARY'S UNIVERSITY*</b>	<b>1:00 p.m.</b>
2/18	<b>MACALESTER COLLEGE*</b>	<b>7:00 p.m.</b>
2/21	<b>COLLEGE OF SAINT BENEDICT*</b>	<b>1:00 p.m.</b>

HOME GAMES in BOLD FACE CAPS; all times Central

\* MIAC game

# UW-Stout Thanksgiving Tournament

### GUSTAVUS QUICK FACTS

Location:	St. Peter, Minnesota
Address:	800 West College Ave. St. Peter, MN 56082
Founded:	1862
Enrollment:	2,500
Nickname:	Golden Gusties
School Colors:	Black and Gold
Home Arena:	Gus Young Court
Conference:	Minnesota Intercollegiate Athletic
NCAA Affiliation:	NCAA Division III
President:	Rebecca M. Bergman
Athletic Director:	Tom Brown
Assistant Athletic Director:	Jared Phillips
Athletic Trainer:	Troy Banse
Equipment Manager:	Wayne Norman
Sports Information Director:	Ethan Armstrong
Sports Information Graduate Assistant:	Nick Hoelmer

### GUSTAVUS ADOLPHUS COLLEGE

"Golden Gusties"

4-1

### UNIVERSITY OF ST. THOMAS

"Tommies"

4-0

### GAME SIX

### GAME INFORMATION

**DATE:** Wednesday, December 3

**TIME:** 7:00 p.m.

**SITE:** St. Paul, Minnesota

**VENUE:** Schoenecker Arena

**WEB VIDEO:** <http://www.msbnsports.net/teams.php?ID=10>

**LIVE STATS:** <https://dl.dropboxusercontent.com/u/108640996/XLIVE.HTM>

### SETTING THE SCENE

After concluding the early-season portion of its non-conference schedule last weekend at the UW-Stout Thanksgiving Shootout, the Gustavus Adolphus women's basketball team is set to open MIAC play on Wednesday, Dec. 3 with a 7:00 p.m. game against the University of St. Thomas at Schoenecker Arena. The Gusties head into league play at 4-1 overall after a 76-78 loss to the University of Dubuque on Saturday and a 71-58 win over the College of St. Scholastica. St. Thomas also stayed busy over Thanksgiving weekend with a 60-52 home victory over UW-Stevens Point on Sunday to help it improve to 4-0.

### LAST TIME OUT

The Gustavus women's basketball team is coming off a 1-1 showing at the UW-Stout Thanksgiving Shootout held last Saturday and Sunday in Menomonie. The Gusties opened up the weekend with a 78-76 loss to Dubuque on Saturday and then turned things around with a 71-58 win over St. Scholastica on Sunday.

The Gusties shot 52.8-percent from the field against Dubuque and 48.1-percent against St. Scholastica for a combined 50.4-percent clip over its two games. Gustavus was led in scoring by rookie Mikayla Miller who scored 21 points against the Spartans and a game-high 23 points against the Saints. Maddie Ehrich also finished in double-figures both times out with 12 points on Saturday and 13 points on Sunday.

### GUSTAVUS PROJECTED STARTERS

#	Player	Pos.	Yr.	Ht.	Hometown	PPG	RPG	FG%	3PT%	FT%	MIN.
10	Mikayla Miller	G	Fy.	5-8	Goodhue, Minn.	21.4	6.4	.425	.345	.852	30.2
32	Hannah Howard	G	So.	5-9	St. Paul, Minn.	5.6	3.0	.476	.000	.727	17.4
33	Lindsey Johnson	F	Jr.	6-0	Edina, Minn.	11.8	5.6	.686	.750	1.000	26.0
34	Maddie Ehrich	G	Sr.	5-9	Eden Prairie, Minn.	7.6	3.6	.452	.000	.833	23.6
43	Miranda Rice	F	Fy.	5-11	Forest Lake, Minn.	7.0	5.4	.448	.000	.529	20.4

### ST. THOMAS PROJECTED STARTERS

#	Player	Pos.	Yr.	Ht.	Hometown	PPG	RPG	FG%	3PT%	FT%	MIN.
3	Katie Stone	G	Jr.	5-6	Eau Claire, Wis.	5.2	3.0	.276	.238	.000	18.8
5	Laura Margarit	G	Sr.	5-9	Bloomington, Minn.	2.0	3.0	.154	.000	1.000	25.8
21	Jenna Dockter	G	Sr.	5-9	Rosemount, Minn.	13.2	3.5	.471	.294	.727	30.0
33	Anna Smith	F	Sr.	5-10	Bloomington, Minn.	7.0	8.8	.400	.500	.647	26.0
40	Maggie Weiers	C	Sr.	6-2	New Prague, Minn.	12.8	7.0	.512	.000	.700	25.2



**TWITTER**  
[@GustieAthletics](https://twitter.com/GustieAthletics)



**FACEBOOK**  
[facebook.com/GustieAthletics](https://facebook.com/GustieAthletics)



**GAME CENTRAL**  
[client.stretchinternet.com/client/gac.portal](http://client.stretchinternet.com/client/gac.portal)



**YOUTUBE**  
[youtube.com/gustavusathletics](https://youtube.com/gustavusathletics)



**INSTAGRAM**  
[instagram.com/gustieathletics](https://instagram.com/gustieathletics)



**FLICKR**  
[flickr.com/photos/gogusties](https://flickr.com/photos/gogusties)



# 2014-15 GUSTAVUS ADOLPHUS WOMEN'S BASKETBALL GAME NOTES

GUSTAVUS VS. ST. THOMAS | WEDNESDAY, DECEMBER 3

## STATISTICAL COMPARISON

GUSTAVUS	VS.	ST. THOMAS
4-1	Overall Record	4-0
0-0	Conference Record	0-0
76.8	Points Per Game	62.8
+18.4	Scoring Margin	+15.0
.480	Field Goal Percentage	.408
.381	3-PT Field Goal Percentage	.238
.776	Free Throw Percentage	.725
203	Rebounds	173
40.6	Rebounds Per Game	43.3
+12.0	Rebounding Margin	+9.8
81	Assists	56
16.2	Assists Per Game	14.0
0.8	Assist/Turnover Ratio	0.9
20.2	Turnovers Per Game	15.3
+1.2	Turnover Margin	+2.75

## GUSTAVUS'S RECORD WHEN...

At home...	3-0
On the road...	0-0
A neutral site...	0-1
In MIAC games...	0-0
In non-conference games...	3-1
When leading after first half...	3-0
When tied after first half...	0-0
When trailing after first half...	0-1
In overtime...	0-0
GAC has more rebounds...	3-1
Opponent has more rebounds...	0-0
Rebounds equal...	0-0
GAC has more assists...	3-0
Opponent has more assists...	0-1
Assists equal...	0-0
GAC commits more fouls...	3-1
Opponent commits more fouls...	0-0
Fouls equal...	0-0
GAC commits more turnovers...	0-1
Opponent commits more turnovers...	3-0
Turnovers equal...	0-0
GAC scores first...	3-0
Opponent scores first...	0-1
Games decided by three or less...	0-1
Games decided by single figures...	0-1
Games decided by double figures...	3-0
In November...	3-1
In December...	0-0
In January...	0-0
In February...	0-0
Following a win...	2-1
Following a loss...	0-0

### SERIES HISTORY

Wednesday night's game will be the 75th meeting between Gustavus and St. Thomas in women's basketball. The Tommies hold the advantage in the all-time series with a record of 51-23. Gustavus was swept by St. Thomas in last year's regular season series by scores of 79-52 on Jan. 15 in St. Peter and 90-56 on Feb. 19 in St. Paul. The Tommies then ended Gustavus's season in the MIAC Playoff Quarterfinals with a 66-51 win on Feb. 25 at Shoeneker Arena. Gustavus's last win in the series came by way of a 66-56 victory on Feb. 17, 2010. Since then, St. Thomas has rattled off 12 straight wins.

### SCOUTING THE TOMMIES

The St. Thomas women's basketball team begins a new week undefeated over its first four games and has propelled itself to a No. 8 ranking according to the most recent D3hoops.com poll. The Tommies were in action over Thanksgiving weekend with a 60-52 win at home over UW-Stevens Point on Sunday. St. Thomas jumped out to a 37-26 halftime lead and was able to hold off the Pointers despite a much-improved second half by the visitors. Three Tommies finished in double-figures led by Jenna Dockter who scored 17 points on 5-of-10 shooting from the field, 3-of-6 from three-point range, and 4-of-6 at the free throw line. Maggie Weiers scored 13 points (6-12 FG), and Anna Smith added 11 (2-6 FG, 6-6 FT).

Jenna Dockter enters the beginning of conference play averaging 13.2 points per game and shooting 47.1-percent from the field. Maggie Weiers also averages double-figures at 12.8 points per game to go along with a 51.2-percent shooting clip from the field. Anna Smith is the team's leading rebounder at 8.8 boards per game.

St. Thomas ranks seventh in the league in scoring with a 62.8 points per game average. The Tommies are shooting 40.8-percent from the field (3rd/MIAC), 23.8-percent from three (11th/MIAC), and 72.5-percent (3rd/MIAC) at the line. St. Thomas currently boasts one of the top defenses in the league, allowing an average of 47.8 points per game (2nd/MIAC) and limiting opponents to a league-best field goal percentage of 30.8-percent.

### NEWS AND NOTES

#### TRENDS FROM MENOMONIE

**Miller Is A Pure Scorer** - First-year guard Mikayla Miller averaged 22 points and shot 46.7-percent from the field in Gustavus's 1-1 showing in Menomonie last weekend. Miller scored 21 points and was 6-for-13 from the field, 3-for-7 from three, and 6-for-8 at the line against Dubuque. She then capped the weekend with a game-high 23 points after going 8-for-17 from the field, 4-for-10 from three, and 3-3 at the line. Miller has reached double-digit points in each of her first five collegiate games and is currently ranked second in the MIAC in scoring at 21.4 points per game.

**Gusties On The Glass** - Gustavus was a terror on the glass last weekend with 36 boards against the Spartans on Saturday and 42 against the Saints on Sunday. The Gusties outrebounded Dubuque by 10 and St. Scholastica by a season-best 18 to increase their rebounding margin to +12 on the year. Miller and Miranda Rice led the team with a combined 15 and 12 rebounds, respectively, over the weekend. Gustavus's rebounding average of 40.6 ranks sixth in the MIAC.

**Frosh Growing Up** - With a young roster, Head Coach Laurie Kelly continued to throw her frosh into the fire last weekend. First-years Mikayla Miller (34.5 mpg), Miranda Rice (21 mpg), and Kelsey Carpenter (22.5 mpg) all averaged over 20 minutes per game, while Stephanie Klockmann (17.6), Siri Sviggum (14 mpg, and Emme Udo (10 mpg) also provided valuable court time.

#### By The Numbers...

**57.1** - Lindsey Johnson's field goal percentage last weekend. Johnson was a combined 8-for-14 from the floor for an average of nine points. The junior is currently the league's top field goal shooter at 68.6-percent.

**77.6** - Gustavus's league-leading free throw percentage. The Gusties are averaging 18 free throws per game and have shot over 75-percent from the line in four of their last five games.

## MIAC STANDINGS/SCHEDULE

SCHOOL	MIAC	OVERALL	AROUND THE LEAGUE
Saint Mary's	0-0	6-0	Wednesday, December 3
St. Thomas	0-0	4-0	St. Olaf at Macalester 5:45 p.m.
Bethel	0-0	3-0	Gustavus at St. Thomas 7:00 p.m.
Gustavus	0-0	4-1	Augsburg at Carleton 7:00 p.m.
St. Catherine	0-0	4-1	Bethel at St. Catherine 7:00 p.m.
Augsburg	0-0	4-2	Saint Mary's at Hamline 7:00 p.m.
Concordia	0-0	3-2	Concordia at Saint Benedict 7:00 p.m.
Hamline	0-0	3-2	
Saint Benedict	0-0	2-2	
St. Olaf	0-0	3-4	
Macalester	0-0	2-4	
Carleton	0-0	0-4	



# 2014-15 GUSTAVUS ADOLPHUS WOMEN'S BASKETBALL GAME NOTES

GUSTAVUS VS. ST. THOMAS | WEDNESDAY, DECEMBER 3

## 2014-15 GUSTAVUS WOMEN'S BASKETBALL TEAM



## 2014-15 GUSTAVUS WOMEN'S BASKETBALL NUMERICAL ROSTER

No.	Name	Year	Position	Height	Hometown	High School
3	Emee Udo	First-year	Guard	5-9	Apple Valley, Minn.	Eastview
5	Kelsey Carpenter	Sophomore	Guard	5-8	St. Peter, Minn.	St. Peter
10	Mikayla Miller	First-year	Guard	5-8	Goodhue, Minn.	Goodhue
11	Emily FitzSimmons*	Senior	Guard	5-7	Good Thunder, Minn.	Maple River
12	Anne Odegard	Sophomore	Guard	5-9	St. Paul, Minn.	Cretin-Derham Hall
14	Kate Thiesse	First-year	Forward	5-10	Welcome, Minn.	Martin County West
15	Siri Sviggum	First-year	Guard	5-7	Dennison, Minn.	Kenyon-Wanamingo
20	Hannah Silva-Breen	First-year	Forward	5-10	Prior Lake, Minn.	Prior Lake
21	Morgan Iverson	Sophomore	Forward	5-9	Waconia, Minn.	Waconia
22	Julie Sohre	Junior	Forward	5-10	Good Thunder, Minn.	Maple River
23	Heather Hohenstein	Junior	Guard	5-5	Garden City, Minn.	Lake Crystal Wellcome Memorial
24	Taylor Ebnet	Sophomore	Guard	5-7	Lake Lillian, Minn.	BOLD
30	Kelle Nett	Junior	Forward	5-10	Spring Valley, Ill.	Hall
32	Hannah Howard	Sophomore	Guard	5-9	St. Paul, Minn.	Cretin-Derham Hall
33	Lindsey Johnson*	Junior	Forward	6-0	Edina, Minn.	Edina
34	Maddie Ehrich	Senior	Guard	5-9	Eden Prairie, Minn.	Lion's Gate Christian Academy
40	Anna Lundquist	Junior	Post	5-11	Rochester, Minn.	Mayo
42	Emmaline Crawford	Sophomore	Post	6-0	Mankato, Minn.	East
43	Miranda Rice	First-year	Forward	5-11	Forest Lake, Minn.	Forest Lake
44	Stephanie Klockmann	First-year	Post	5-10	Brownston, Minn.	Glencoe-Silver Lake
50	Cara Christiansen	Sophomore	Forward	5-10	North Mankato, Minn.	West

**Head Coach:** Laurie Kelly (Third Season)

**Assistant Coaches:** Dan Wolfe, Angie Potts, Nate Otto





## 2014-15 GUSTAVUS ADOLPHUS WOMEN'S BASKETBALL GAME NOTES

GUSTAVUS VS. ST. THOMAS | WEDNESDAY, DECEMBER 3

### HEAD COACH LAURIE KELLY

Third Season

31-24 at Gustavus

253-215 Overall

Office: 507-933-6145

Email: lkelly@gustavus.edu

Laurie Kelly is in her third season as the head coach of the Gustavus women's basketball team. Kelly, a 1993 graduate of the University of St. Thomas with a degree in speech communications, came to Gustavus from Northern Arizona University in Flagstaff, where she directed the Division I Lumberjacks for nine seasons.

Thanks to a late surge during which the 2013-14 Gustavus women's basketball team won seven of eight games from late-January to mid-February, the Gusties were able finish sixth in the conference standings with a record of 11-11 and earn a trip to the MIAC Playoffs for an MIAC-best 14th consecutive season. Gustavus finished the year with a record of 14-12 overall after falling on the road to No. 3-seeded St. Thomas 66-51 in the quarterfinals of the MIAC Playoffs.

Senior guard Julia Dysythe (White Bear Lake, Minn.) and sophomore post Karina Schroeder (Lake Crystal, Minn.) were both honored as members of the All-Conference Team following the season. Dysythe, a first time all-conference performer, scored a career-high 382 points (13.7 ppg) and shot 42.1-percent from the field. Schroeder, a member of the MIAC All-Rookie Team last season, established herself as one of the top post players in the league after averaging 14.2 points per game, shooting 53.3-percent from the field, and bringing down an average of 8.9 rebounds per game. She led the team in all three categories and finished with the second-best field goal shooting percentage in the league at 51.6-percent against league opponents.

A Rochester, Minnesota, native, Kelly made a quick ascent through the Division II and I coaching ranks after record setting Division III playing career at the University of St. Thomas in the early '90s. In the past nine years at Northern Arizona, she has compiled the most wins in the program's history (117), while also directing the team to its first-ever Big Sky Conference tournament title and NCAA tournament bid in the 2005-06 season. During Kelly's tenure, the Lumberjacks advanced to the Big Sky tournament six times with two appearances in the championship game (2006, 2007), and her teams have registered two of the three 20-win seasons in the program's history.

In addition to quality on the floor, her squads have also been strong in the classroom, with four players earning CoSIDA Academic All-District honors including one Academic All-American. The Lumberjacks were recognized in the Women's Basketball Coaches Association Top 25 Academic Honor Roll six times, with two Top Ten national rankings.

Following the 2012-13 season, the Gustavus women's basketball team achieved a significant milestone when the Women's Basketball Coaches Association (WBCA) announced its Academic Top 25 Team Honor Roll following the year. Making their 15th appearance on the NCAA Division III honor roll, the Gusties were recognized as the team with the top cumulative grade point average in country at a 3.600 – a first in the program's history.

Prior to her position at Northern Arizona, Kelly coached at Binghamton University in New York and built the Bearcats into one of the top Division II programs in the country before helping the institution transition to a Division I program in 2001-02. In that first year of Division I competition, Kelly directed the team to a 19-9 record and a second-place finish in the America East Conference. During her five years at Binghamton, Kelly compiled a record of 94-22, including a mark of 75-13 in the program's final three years at the Division II level, and her squads won New England Collegiate Conference (NECC) titles in 1999 and 2000 and Eastern Collegiate Athletic Conference (ECAC) titles in 2000 and 2001. She was named ECAC Coach of the Year in 2000 and New York State Coach of the Year in 2002. Kelly started her collegiate coaching career as the graduate assistant coach at Minnesota State University, Mankato from 1996 to 1998. While she was at Minnesota State, Mankato she earned a master's degree in physical education with an emphasis in sports administration.

Before her success in the coaching ranks, Laurie Trow Kelly was a standout player at the University of St. Thomas from 1989 to 1993 and is recognized by many as one of the greatest players in NCAA Division III history. A gifted athlete, the 6-1 Kelly scored 2,607 points and pulled down 1,204 rebounds in four years, earning Kodak All-America honors three consecutive seasons. In her senior season (1992-93), Kelly was voted National Player of the Year by the Women's Basketball Coaches Association after averaging more than 26 points per game. She set 22 conference and 24 school records, was conference MVP three times and was also named Midwest Sports Channel NCAA Division III Women's Athlete of the Year. In January of 2006, Kelly was one of five players selected to the NCAA Division III 25th Anniversary Team.

Laurie Kelly is the ninth head coach in the history of the Gustavus women's basketball program. Heading into the 2014-15 season, the Gusties have compiled an all-time record of 632-434 (.593), winning two Minnesota Intercollegiate Athletic Conference championships and making five NCAA tournament appearances.

In addition to her coaching duties, Kelly serves as the coordinator of the Gustavus Health Promotion program (GHP). The Gustavus Health Promotion program offers employees at Gustavus a variety of educational opportunities, assessment tools, and physical activity experiences so that they can achieve and maintain a healthy lifestyle.

Kelly lives in St. Peter with and her husband, Matt, and their two daughters, Morgan and Madison.





## 2014-15 GUSTAVUS ADOLPHUS WOMEN'S BASKETBALL GAME NOTES

GUSTAVUS VS. ST. THOMAS | WEDNESDAY, DECEMBER 3

### 2014-15 TV/RADIO ROSTER



**EMME  
EDO**  
Guard - First-year  
Apple Valley, Minn.



**KELSEY  
CARPENTER**  
Guard - First-year  
St. Peter, Minn.



**MIKAYLA  
MILLER**  
Guard - First-year  
Goodue, Minn.



**EMILY  
FITZSIMMONS**  
Guard - Senior  
Good Thunder, Minn.



**ANNE  
ODEGARD**  
Guard - Sophomore  
St. Paul, Minn.



**KATE  
THIESSE**  
Forward - First-year  
Welcome, Minn.



**SIRI  
SVIGGUM**  
Guard - First-year  
Dennison, Minn.



**HANNAH  
SILVA-BREEN**  
Forward - First-year  
Prior Lake, Minn.



**MORGAN  
IVERSON**  
Forward - Sophomore  
Waconia, Minn.



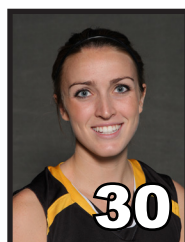
**JULIE  
SOHRE**  
Forward - Junior  
Good Thunder, Minn.



**HEATHER  
HOHENSTEIN**  
Guard - Junior  
Garden City, Minn.



**TAYLOR  
EBNET**  
Guard - Sophomore  
Lake Lillian, Minn.



**KELLE  
NETT**  
Forward - Junior  
Spring Valley, Ill.



**HANNAH  
HOWARD**  
Guard - Sophomore  
St. Paul, Minn.



**LINDSEY  
JOHNSON**  
Forward - Junior  
Edina, Minn.



**MADDIE  
EHRICH**  
Guard - Senior  
Eden Prairie, Minn.



**ANNA  
LUNDQUIST**  
Post - Junior  
Rochester, Minn.



**EMMALINE  
CRAWFORD**  
Post - Sophomore  
Mankato, Minn.



**MIRANDA  
RICE**  
Forward - First-year  
Forest Lake, Minn.



**STEPHANIE  
KLOCKMANN**  
Post - First-year  
Browntown, Minn.



**CARA  
CHRISTIENSEN**  
Post - Sophomore  
North Mankato, Minn.



**LAURIE  
KELLY**  
Head Coach



**DAN  
WOLFE**  
Assistant Coach



# 2014-15 GUSTAVUS ADOLPHUS WOMEN'S BASKETBALL GAME NOTES

GUSTAVUS VS. ST. THOMAS | WEDNESDAY, DECEMBER 3

## 2014-15 COMBINED SEASON STATISTICS

RECORD:	OVERALL	HOME	AWAY	NEUTRAL
ALL GAMES	4-1	3-0	0-0	1-1
CONFERENCE	0-0	0-0	0-0	0-0
NON-CONFERENCE	4-1	3-0	0-0	1-1

#	Player	gp-gs	min	avg	Total		3-Point		F-Throw		Rebounds				pf	dq	a	to	blk	stl	pts	avg
					fg-fga	pct	3fg-fga	pct	ft-fga	pct	off	def	tot	avg								
10	Mikayla Miller	5-5	151	30.2	37-87	.425	10-29	.345	23-27	.852	9	23	32	6.4	12	0	19	25	1	15	107	21.4
33	Lindsey Johnson	5-5	130	26.0	24-35	.686	3-4	.750	8-8	1.000	6	22	28	5.6	7	0	12	9	1	6	59	11.8
44	Stephanie Klockmann	2-0	35	17.5	7-9	.778	0-0	.000	2-4	.500	4	2	6	3.0	4	0	4	1	1	4	16	8.0
34	Maddie Ehrich	5-5	118	23.6	14-31	.452	0-1	.000	10-12	.833	7	11	18	3.6	15	0	15	5	0	4	38	7.6
43	Miranda Rice	5-5	102	20.4	13-29	.448	0-0	.000	9-17	.529	8	19	27	5.4	15	0	4	6	1	6	35	7.0
05	Kelsey Carpenter	5-0	100	20.0	9-22	.409	5-13	.385	8-9	.889	0	2	2	0.4	9	0	5	10	0	1	31	6.2
32	Hannah Howard	5-5	87	17.4	10-21	.476	0-1	.000	8-11	.727	7	8	15	3.0	15	0	7	12	1	12	28	5.6
15	Siri Sviggum	5-0	91	18.2	9-18	.500	5-12	.417	4-6	.667	6	7	13	2.6	7	0	4	3	1	3	27	5.4
40	Anna Lundquist	5-0	35	7.0	3-10	.300	0-0	.000	7-8	.875	7	11	18	3.6	7	0	0	3	1	1	13	2.6
12	Anne Odegard	2-0	7	3.5	1-3	.333	0-2	.000	3-3	1.000	0	0	0	0.0	1	0	0	2	0	0	5	2.5
24	Taylor Ebnet	1-0	3	3.0	0-0	.000	0-0	.000	2-2	1.000	0	1	1	1.0	1	0	0	2	0	0	2	2.0
03	Emee Udo	5-0	59	11.8	4-9	.444	0-0	.000	2-3	.667	2	8	10	2.0	3	0	3	3	1	1	10	2.0
50	Cara Christiansen	3-0	20	6.7	1-2	.500	0-0	.000	3-4	.750	1	2	3	1.0	3	0	1	4	0	0	5	1.7
11	Emily FitzSimmons	2-0	15	7.5	1-2	.500	1-1	1.000	0-0	.000	0	2	2	1.0	1	0	1	3	0	1	3	1.5
22	Julie Sohre	2-0	13	6.5	1-1	1.000	0-0	.000	1-2	.500	0	1	1	0.5	2	0	1	1	0	0	3	1.5
23	Heather Hohenstein	4-0	29	7.3	1-2	.500	0-0	.000	0-0	.000	0	1	1	0.3	4	0	4	6	0	1	2	0.5
42	Emmaline Crawford	1-0	0	0.0	0-0	.000	0-0	.000	0-0	.000	0	3	3	3.0	1	0	0	0	0	1	0	0.0
20	Hannah Silva-Breen	1-0	2	2.0	0-0	.000	0-0	.000	0-0	.000	0	0	0	0.0	0	0	0	0	0	0	0	0.0
30	Kelle Nett	2-0	3	1.5	0-0	.000	0-0	.000	0-0	.000	1	2	3	1.5	0	0	1	0	0	0	0	0.0
Total.....		5	1000		135-281	.480	24-63	.381	90-116	.776	70	133	203	40.6	107	0	81	101	8	56	384	76.8
Opponents.....		5	1004		96-261	.368	30-74	.405	70-108	.648	55	88	143	28.6	87	-	45	107	6	43	292	58.4

TEAM STATISTICS	GAC	OPP
SCORING	384	292
Points per game	76.8	58.4
Scoring margin	+18.4	-
FIELD GOALS-ATT	135-281	96-261
Field goal pct	.480	.368
3 POINT FG-ATT	24-63	30-74
3-point FG pct	.381	.405
3-pt FG made per game	4.8	6.0
FREE THROWS-ATT	90-116	70-108
Free throw pct	.776	.648
F-Throws made per game	18.0	14.0
REBOUNDS	203	143
Rebounds per game	40.6	28.6
Rebounding margin	+12.0	-
ASSISTS	81	45
Assists per game	16.2	9.0
TURNOVERS	101	107
Turnovers per game	20.2	21.4
Turnover margin	+1.2	-
Assist/turnover ratio	0.8	0.4
STEALS	56	43
Steals per game	11.2	8.6
BLOCKS	8	6
Blocks per game	1.6	1.2
ATTENDANCE	474	430
Home games-Avg/Game	3-158	0-0
Neutral site-Avg/Game	-	2-215

Date	Opponent		Score	Att.
11-15-14	CROWN COLLEGE	w	31-81	182
11-16-14	MARTIN LUTHER	w	58-74	72
11-22-14	MINNESOTA MORRIS	w	67-82	220
11/29/14	vs Dubuque	L	76-78	347
11/30/14	vs St. Scholastica	w	58-71	83

\* - Conference game

Score by Periods	1st	2nd	Totals
Gustavus Adolphus Col	188	196	384



## 2014-15 GUSTAVUS ADOLPHUS WOMEN'S BASKETBALL GAME NOTES

GUSTAVUS VS. ST. THOMAS | WEDNESDAY, DECEMBER 3

### 2014-15 GAME-BY-GAME STATISTICAL COMPARISON

Opponent	1st	2nd	Score	Mar	Total FG	FG Pct	3-Pointers	3FG Pct	Free Throws	FT Pct	Rebounds	Assist	T/Over	Block	Steal	Fouls
CROWN COLLEGE	43/17	38/14	81-31	+50	26-60/10-44	.433/.227	8-20/2-9	.400/.222	21-28/9-20	.750/.450	44/34 +10	15/5	21/34	2/0	14/10	26/20
MARTIN LUTHER	38/24	36/34	74-58	+16	28-63/19-53	.444/.358	0-4/4-13	.000/.308	18-20/16-24	.900/.667	43/31 +12	17/9	21/24	2/3	14/11	20/18
MINNESOTA MORRIS	42/28	40/39	82-67	+15	28-53/22-53	.528/.415	5-11/9-18	.455/.500	21-25/14-23	.840/.609	38/28 +10	18/11	17/20	1/2	12/2	21/18
Dubuque	34/36	42/42	76-78	(2)	28-53/25-55	.528/.455	6-14/10-18	.429/.556	14-23/18-26	.609/.692	36/26 +10	19/13	22/14	1/0	8/11	24/17
St. Scholastica	31/21	40/37	71-58	+13	25-52/20-56	.481/.357	5-14/5-16	.357/.313	16-20/13-15	.800/.867	42/24 +18	12/7	20/15	2/1	8/9	16/14

Note: Game totals are displayed in the format TEAM/OPPONENT for each category