

GUSTAVUS ADOLPHUS COLLEGE

2014-15 MEN'S HOCKEY GAME NOTES

2014-15 GUSTAVUS SCHEDULE

DATE	OPPONENT	TIME/RESULT
10/31	Bethel University#	L 2-4
11/2	St. Olaf College#	W 6-3
11/7	UW-STEVENS POINT	L 1-4
11/8	UW-STOUT	W 4-3
11/14	Concordia College*	W 2-1
11/15	Concordia College*	T 3-3 (SL)
11/21	Hamline University*	T 3-3 (SW)
11/22	HAMLIN UNIVERSITY*	T 2-2 (SW)
11/29	LAWRENCE UNIVERSITY	T 3-3
11/30	MARIAN UNIVERSITY	L 1-2
12/5	ST. OLAF COLLEGE*	7:05 p.m.
12/6	St. Olaf College*	7:30 p.m.
1/2	WILLIAMS COLLEGE	5:05 p.m.
1/9	FINLANDIA UNIVERSITY	8:05 p.m.
1/10	COLLEGE OF ST. SCHOLASTICA	7:05 p.m.
1/16	Augsburg College*	7:05 p.m.
1/17	AUGSBURG COLLEGE*	7:05 p.m.
1/23	Saint Mary's University*	7:00 p.m.
1/24	SAINT MARY'S UNIVERSITY*	7:05 p.m.
1/30	Saint John's University*	7:00 p.m.
2/31	SAINT JOHN'S UNIVERSITY*	7:05 p.m.
2/13	UNIVERSITY OF ST. THOMAS*	7:05 p.m.
2/14	University of St. Thomas*	7:00 p.m.
2/20	Bethel University*	7:00 p.m.
2/21	BETHEL UNIVERSITY*	7:05 p.m.

HOME GAMES in BOLD FACE CAPS; all times Central

* MIAC game

MIAC Showcase (Blaine, Minn.)

GUSTAVUS QUICK FACTS

Location:	St. Peter, Minnesota
Address:	800 West College Ave. St. Peter, MN 56082
Founded:	1862
Enrollment:	2,500
Nickname:	Golden Gusties
School Colors:	Black and Gold
Home Arena:	Don Roberts Ice Rink
Conference:	Minnesota Intercollegiate Athletic
NCAA Affiliation:	NCAA Division III
President:	Rebecca M. Bergman
Athletic Director:	Tom Brown
Assistant Athletic Director:	Jared Phillips
Athletic Trainer:	Troy Banse
Equipment Manager:	Wayne Norman
Sports Information Director:	Ethan Armstrong
Sports Information Graduate Assistant:	Nick Hoelmer

GUSTAVUS ADOLPHUS COLLEGE

"Golden Gusties"

3-3-4 Overall, 1-0-3 MIAC

ST. OLAF COLLEGE

"Oles"

2-8-0 Overall, 1-3-0 MIAC

GAME 11

GAME INFORMATION

DATE: Friday, December 5

TIME: 7:05 p.m.

SITE: St. Peter, Minnesota

ARENA: Don Roberts Ice Rink

WEB VIDEO: <http://portal.stretchinternet.com/gac>

LIVE STATS: <https://gustavus.edu/athletics/hky/LIVE/xlive.htm>

GAME 12

GAME INFORMATION

DATE: Saturday, December 6

TIME: 7:30 p.m.

SITE: Northfield, Minnesota

ARENA: Northfield Ice Arena

WEB VIDEO: <https://portal.stretchinternet.com/stolaf/>

LIVE STATS: <https://portal.stretchinternet.com/stolaf/>

SETTING THE SCENE

The Gustavus Adolphus men's hockey team will battle the Oles of St. Olaf College in a home-and-home series this weekend.

The weekend will begin with a 7:05 p.m. game at Don Roberts Ice Rink in St. Peter on Friday, Dec. 5. The series will then conclude at the Northfield Ice Arena in Northfield on Saturday, Dec. 6 with a 7:30 p.m. puck drop.

Both Gustavus and St. Olaf were in action last weekend when they took part in the 2014 MIAC/NCHA Thanksgiving Showcase held on Saturday and Sunday at Don Roberts Ice Rink. Gustavus went 0-1-1 over the weekend with a 3-3 tie against Lawrence and a 2-1 loss to Marian. St. Olaf went 0-2-0 after falling to Marian 3-1 and Lawrence 4-3. The Gusties head back into MIAC play at 3-3-4 overall and 1-0-3 in the MIAC, while St. Olaf comes in at 2-8-0 overall and 1-3-0 in the MIAC.

TICKET INFORMATION

Tickets for Gustavus athletic events are available for purchase prior to each home event one hour prior to the scheduled game time. Men's hockey general admission tickets are \$5 for adults, \$4 for visiting college students with ID, \$2 for ages 12-18, and free for ages 12 and under 62 and over.



TWITTER
@GustieAthletics



FACEBOOK
facebook.com/GustieAthletics



GAME CENTRAL
client.stretchinternet.com/client/gac.portal



YOUTUBE
youtube.com/gustavusathletics



INSTAGRAM
instagram.com/gustieathletics



FLICKR
flickr.com/photos/googusties

MEN'S HOCKEY MEDIA CONTACT

Sports Information Director: Ethan Armstrong

Email: earmstr2@gac.edu • Cell: 320-815-2351 • Office: 507-933-7647

14-TIME MIAC CHAMPION



2014-15 GUSTAVUS ADOLPHUS MEN'S HOCKEY GAME NOTES

STATISTICAL COMPARISON

Gustavus		St. Olaf
2.70 (4th)	Goals For	1.70 (9th)
2.80 (6th)	Goals Against	3.30 (8th)
6/30-20.0% (2nd)	Power Play	7/33-21.2% (1st)
27/28-96.4% (1st)	Penalty Kill	33/38-86.8% (3rd)
+2 (T-2nd)	Special Teams Net	+5 (1st)
10.8 (6th)	Penalty Minutes	10.5 (7th)

- 2014-15 overall per game averages with MIAC rank

THE SERIES

VS. ST. OLAF

All-Time	63-25-6
Last Meeting	W 6-3 (11/2/14)
Current Streak	W - 1

Head Coach Brett Petersen	
Record at Gustavus	201-151-36
vs. St. Olaf	20-10-5

Head Coach Sean Goldsworthy	
Record at St. Olaf	184-212-55
vs. Gustavus	12-26-5

Last Ten	7-1-2
Date	Result
11/2/14	W 6-3
12/7/13	T 2-2 (SW)
12/6/13	W 3-1
2/22/13	W 3-2 (MIAC Semifinals)
2/16/13	W 2-0
2/15/13	W 4-1
3/3/12	W 4-2 (MIAC Final)
2/18/12	T 3-3 OT
2/17/12	W 3-2
1/7/11	L 3-4

CAREER SCORING VS. ST. OLAF

Player	Games	Goals	Assists	Points
Nate Paulsen	8	1	5	6
Jack Walsh	9	3	2	5
Andy Pearson	8	2	3	5
Tyler Lopic	6	2	2	4
Jake Bushey	1	2	1	3
Drew Aspinwall	3	0	2	2
Gavin Tuffe	3	1	1	2
Darren Lopic	6	1	0	1
Sam Smith	5	0	1	1
Sam Majka	2	0	1	1
Blake Schammel	7	0	1	1
Jared Docken	3	0	1	1
Jake McCann	1	0	1	1
Conor Deal	1	0	1	1
Cameron Jackson	1	1	0	1
Tim Donohue	1	0	1	1
Colin Hernon	1	1	0	1
Cory Ellis	3	0	0	0
Schlyler Adams	3	0	0	0
Joncarlo Westerlund	1	0	0	0
Sam Akins	1	0	0	0
Ross Kovacs	1	0	0	0
Joncarlo Westerlund	1	0	0	0

Goaltending	Record	Min.	GA	Saves
John McLean	3-0-1	245:00	2	86
Erik Johnson	1-0-0	60:00	3	25

GAME NOTES

LIVE COVERAGE

Live video and live stats for Friday night's games will be provided through the links below. New this season, Gustavus will provide a high definition video stream of all home games for viewing on your computer, tablet, or smart phone through GameCentral by Stretch Internet. Tom Wheeler of KNUJ AM 860 will be in Don Roberts Ice Rink for the live call of this weekend's games.

Live Video

<http://portal.stretchinternet.com/gac/>

Live Stats

<https://gustavus.edu/athletics/hky/LIVE/xlive.htm>

Live video and live stats for Saturday night's game will be produced by St. Olaf and are available via the link below.

Live Stats

<https://portal.stretchinternet.com/stolaf/>

GUSTAVUS EMBARKS ON 73RD SEASON OF MEN'S HOCKEY

The Gustavus men's hockey team is in its 73rd season of existence. One of the storied programs in collegiate hockey, Gustavus has compiled an all-time record of 852-621-72 overall and 564-424-45 in the MIAC. The Gusties have won 14 MIAC Championships and earned a place in the NCAA Division III Tournament six times, which includes a runner-up finish in 2009.

Gustavus first recognized a men's hockey team in 1937 when then Director of Physical Education George Myrum became interested in the sport and raised the funds to sponsor a team. The Gusties fell to Carleton in their first ever intercollegiate game in 1936. It would take until 1939, the first year Gustavus played on natural ice in the on-campus fieldhouse, for Gustavus to record the first victory in the program's history.

GUSTAVUS COACHING STAFF

Head Coach Brett Petersen is in his 15th season at the helm of the Gustavus men's hockey program. Petersen has compiled a 201-151-36 overall record in his 14-plus seasons at Gustavus. His win total at Gustavus ranks second behind legendary coach Don Roberts. He has been named MIAC Coach of the Year twice in his tenure, once in 2001-02 and again in 2009-10.

Within MIAC play, Gustavus holds a record 125-79-24 during the Petersen era. The Gusties have earned a trip to the MIAC Playoffs 13 straight seasons and have advanced to the MIAC Playoff Championship a total of six times under Petersen. Since the turn of the century, Gustavus has qualified for the NCAA Division III Tournament three times in 2009, 2010, and 2012. The Gusties advanced all the way to the NCAA Championship in 2009 where they fell to Neumann 4-1 at Herb Brooks Arena in Lake Placid, N.Y.

Petersen, a Roseville, Minn. native, received his Bachelor of Science degree in business administration from the University of Denver in 1992 and his Master of Science degree in athletic administration in 2000 from St. Cloud State.

Former men's hockey standout David Martinson is in his third season as the assistant men's hockey coach at Gustavus. A 2010 graduate and one of the most decorated hockey players to don a three crowned sweater, Martinson is a native of St. Louis Park, Minn. After being named the MIAC Player of the Year and earning All-America honors twice during his playing career, Martinson continued his education at the Bowling Green State University where he served as a graduate assistant for the men's hockey team. In the fall of 2012, David received his masters of education in sport administration.

ST. OLAF COACHING STAFF

Sean Goldsworthy is in his 18th season as head men's hockey coach at St. Olaf in 2014-15. Goldsworthy is a 1994 graduate of St. Olaf where he was an All-MIAC selection in both hockey and baseball. In hockey, he led the MIAC in scoring in 1993. After playing professional hockey in San Antonio and Memphis of the CHL, Goldsworthy completed his master's at St. Cloud State University and was an assistant at Saint John's University. He is currently 184-212-55 while at St. Olaf and has led St. Olaf to four straight MIAC Playoff appearances from 2003-04 to 2006-07 and to at least one postseason win in 2004, 2005 and 2006.

Sean Goldsworthy is assisted by Pat Cullen (Bemidji State University), Marty Mjelleli (St. Cloud State '08), and Ben Eaves (Boston College '04).

AROUND THE GLOBE

Gustavus's 2014-15 roster features 28 players from six different states and one player from Canada. Within the United States, Minnesota (22), Alaska (1), California (1), North Dakota (1), Oklahoma (1), and Vermont (1) are represented by 27 players. Outside the U.S., the Canadian province of British Columbia is home to Sam Smith.

PRIOR EXPERIENCE



2014-15 GUSTAVUS ADOLPHUS MEN'S HOCKEY GAME NOTES

GUSTAVUS HOCKEY FACTS

2013-14 Record:	16-7-4
2013-14 MIAC Record/Finish:	12-3-1/Second
All-Time Record:	852-621-72
All-Time MIAC Record:	564-424-45
MIAC Championships :	14
Lettermen Returning/Lost:	19/8
All-MIAC Honorees Returning/Lost:	3/1

GUSTAVUS' RECORD WHEN...

At home	1-2-2
On the road	2-1-2
Neutral Site	1-1-0
GAC scores 4 or more goals	2-0-0
GAC scores 3 goals	0-0-3
GAC scores 2 or fewer goals	1-3-1
GAC scores first	2-0-2
Opponent scores first	1-3-2
GAC leads after 1st period	1-0-1
Opponent leads after 1st period	1-2-1
Tied after 1st period	1-1-2
GAC leads after 2nd period	2-0-1
Opponent leads after 2nd period	0-2-2
Tied after 2nd period	1-1-1
Games decided by one goal	2-1
Games decided by two goals	0-1
Games decided by three goals	1-1
Games decided by four or more	0-0
GAC scores on the power play	2-2-2
GAC scoreless on the power play	1-1-2
GAC scores two or more PP goals	0-0-0
GAC outshoots opponent	1-3-3
GAC outshot by opponent	2-0-1
Shots equal	0-0-0
Friday	2-1-1
Saturday	0-1-3
Sunday	1-1-0
In October	0-1-0
In November	3-2-3
In December	0-0-0
In January	0-0-0
In February	0-0-0
In March	0-0-0
Following a win	1-1-1
Following a loss	2-0-0
Following a tie	0-1-3

GAME NOTES

All 28 players on Gustavus's roster previously played junior hockey before beginning their collegiate careers. Thirteen of this year's Gusties are alums of the North American Hockey League (NAHL), while four played in the Superior International Junior Hockey League (SIJHL). The Eastern Junior Hockey League (EJHL), North American Tier III Hockey League (NA3HL), and Western States Hockey League (WSHL) are each represented by two players. The United States Hockey League (USHL), British Columbia Hockey League (BCHL), Central Canada Hockey League (CCHL), American West Hockey League (AWHL), and Minnesota Junior Hockey League (MNJHL) were all home to one future Gustie.

CAPTAIN'S LOG: 2014-15

The 2014-15 Gustavus men's hockey team is led by senior captains Jack Walsh (Mahtomedi, Minn.) and Tyler Lopic (New Prague, Minn.). In the 72-year history of Gustavus men's hockey, Walsh and Lopic are the 87th and 88th student-athletes to earn the right of wearing a "C" on their Gustavus sweater. Jack Walsh is the program's first two-time captain since Ross Ring-Jarvi '12 served during the 2010-11 and 2011-12 seasons.

SENIOR LEADERSHIP

Eight student-athletes are in their fourth and final season on the Gustavus men's hockey team. Sam Smith (Vancouver, B.C.), Jack Walsh, Tyler Lopic, Schyler Adams (New Prague, Minn.), Nate Paulsen (La Habra, Calif.), Andy Pearson (Burnsville, Minn.), Cory Ellis (St. Paul, Minn.), and Blake Schammel (Red Wing, Minn.) make up this year's Golden Gustie seniors. All eight have been significant contributors to the program since coming to campus in the fall of 2011.

LETTERWINNERS AND FRESH FACES

Brett Petersen returned 20 letterwinners from a 2013-14 squad that went 16-7-4 overall (12-3-1 MIAC) and advanced to the MIAC Playoff Championship for the third consecutive season. To go along with his 20 returners, coach Petersen welcomes eight new players to the team. Five of the eight fresh faces are frosh while the other three spent last season on Gustavus's junior varsity team. This season's rookies include Jake McCann (Shoreview, Minn.), Jake Bushey (Duluth, Minn.), Conor Deal (Anchorage, Alaska), Tim Donohue (Bloomington, Minn.), and Isaak Tjaden (Eagan, Minn.). Sophomores Cameron Jackson (Lakeville, Minn.), Matt Petersen (Center City, Minn.), and Mason Wyman (Burnsville, Minn.) moved up to varsity after a season on JV. McCann, Deal, Donohue, and Wyman are forwards, Bushey, Jackson, and Petersen are defenseman, and Tjaden is a goaltender.

THE LONG AND WINDING ROAD

To go along with the team's standard 16 Minnesota Intercollegiate Athletic Conference contests, this season's long and winding schedule features non-conference games against teams belonging to the MIAC, WIAC, NCHA, and NESCAC. In addition to non-league games against conference foes Bethel and St. Olaf this weekend at the MIAC Showcase, Gustavus will face UW-Stevens Point (Nov. 7) and UW-Stout (Nov. 8) of the WIAC, Lawrence (Nov. 29), Marian (Nov. 30), Finlandia (Jan. 9), and St. Scholastica (Jan. 10) of the NCHA, and Williams (Jan. 2) of the NESCAC. The Gusties will play 13 of its games at home at Don Roberts Ice Rink including non-conference bouts against Lawrence and Marian in the MIAC/NCHA Thanksgiving Showdown Nov. 29 and Nov. 30.

THE SERIES

This weekend's games will be the 95th and 96th meetings between Gustavus and St. Olaf in men's hockey. Gustavus holds the advantage in the all-time series with a record of 63-25-6. After earning five of the six possible points against the Oles in last year's regular season series, the Gusties were paired up against St. Olaf in their second game of the 2014-15 season on the final day of the MIAC Showcase back on Nov. 2. With the score tied at 3-3 heading in to the third period, Gustavus exploded for three unanswered goals en route to a 6-3 victory - its first of the season. Jake Bushey led Gustavus's offense with a pair of goals and an assist, while Erik Johnson picked up the win in goal after stopping 25-of-28 shots.

The Gusties have had St. Olaf's number as of late and enter Friday's game riding a nine-game unbeaten-streak in the matchup. The Gusties are 7-0-2 in that time with their last loss coming on Jan. 7, 2011 at the Northfield Ice Arena.

ABOUT LAST WEEKEND

The Gustavus men's hockey team looks to get back on the winning track this weekend as it returns to MIAC play. At the MIAC/NCHA Thanksgiving Showcase held in Don Roberts Ice Rink, the Gusties skated to a 3-3 tie against Lawrence on Saturday night and then fell to Marian 2-1 on Sunday night.

Against Lawrence to open the showcase, Jake McCann scored his first goal of the season to put Gustavus on top 1-0 in the first period, and Gavin Tufte scored to give the Gusties back the lead up 2-1 early in the second. After Lawrence scored to unanswered goals in the second to go up 3-2, Andy Pearson hit the back of the net with the equalizer halfway through the third. Neither team found the game-winner in the remaining minutes of regulation or overtime and Gustavus skated to its four-consecutive draw. Erik Johnson was in goal and made 20 saves through 65 minutes.

On Sunday against Marian, Gustavus saw its six-game unbeaten-streak come with a 2-1 loss thanks to a late third period goal by Warren Carter. After the Sabres kicked off the scoring in the eighth minute of the second period, Jack Walsh knotted the game at 1-1 with just :38 seconds remaining in the same frame. Rookie netminder Isaak Tjaden got his first



2014-15 GUSTAVUS ADOLPHUS MEN'S HOCKEY GAME NOTES

2014-15 MIAC STANDINGS

SCHOOL	POINTS	MIAC	OVERALL
Saint John's	10	3-0-1	5-1-3
Concordia	8	2-1-1	5-3-2
Gustavus	8	1-0-3	3-3-4
St. Thomas	7	2-1-1	3-3-2
Augsburg	6	2-0-0	5-4-0
Saint Mary's	4	0-2-2	2-4-2
St. Olaf	3	1-3-0	2-8-0
Hamline	2	0-0-2	3-3-2
Bethel	0	0-4-0	2-8-0

AROUND THE MIAC

Friday, Dec. 5

Saint Mary's at Aurora | 7:00 p.m.
 Augsburg at Saint John's | 7:00 p.m.
 Hamline at Bethel | 7:00 p.m.
 St. Olaf at Gustavus | 7:05 p.m.
 Concordia at St. Thomas | 7:30 p.m.

Saturday, Dec. 6

Concordia at St. Thomas | 2:00 p.m.
 Saint Mary's at Aurora | 3:00 p.m.
 Bethel at Hamline | 7:00 p.m.
 Saint John's at Augsburg | 7:05 p.m.
 Gustavus at St. Olaf | 7:30 p.m.

USCHO.COM DIII MEN'S POLL

No.	Team	Record	Points	Last Poll
1	St. Norbert (19)	8-0-1	299	1
2	Norwich (1)	7-0-1	280	2
3	Babson	8-0-0	232	6
4	Plattsburgh	8-1-0	226	3
5	Wisconsin-River Falls	7-0-0	206	7
6	Massachusetts-Boston	8-0-0	177	10
7	Wisconsin-Stevens Point	6-2-0	164	9
8	Oswego	5-1-2	159	5
9	Adrian	8-2-0	156	4
10	Bowdoin	6-0-1	146	11
11	Trinity	4-1-1	97	8
12	St. Scholastica	6-1-0	93	11
13	St. John's	5-1-3	42	14
14	Wisconsin-Eau Claire	4-2-2	37	13
15	Amherst	5-1-0	27	NR

D3HOCKEY.COM DIII TOP 15 POLL

No.	Team	Record	Points	Last Poll
1	St. Norbert (20)	8-0-1	300	1
2	Norwich	7-0-1	267	5
3	Babson	8-0-0	242	7
4	Plattsburgh State	8-1-0	220	2
5	UW-Stevens Point	6-2-0	208	6
6	Oswego State	5-1-2	185	4
7	Mass-Boston	8-0-0	169	11
8	UW-River Falls	7-0-0	165	9
9	Adrian	8-2-0	161	3
10	Bowdoin	6-0-1	131	10
11	Trinity (Conn.)	4-1-1	105	8
12	UW-Eau Claire	4-2-2	74	12
13	St. Scholastica	6-1-0	59	15
14	Neumann	5-2-1	35	NR
15	St. John's	5-1-3	26	13

GAME NOTES

collegiate start and suffered the loss after allowing both goals and making 21 saves.

ABOUT THE OLES

Rink familiarity will not be an issue for the St. Olaf men's hockey team as the Oles also took part in the MIAC/NCHA Showcase last weekend. St. Olaf fell to Marian 3-1 on Saturday and concluded the weekend with a 4-3 loss to Lawrence on Sunday. Although St. Olaf has just two wins on the year, one of those wins came against pre-season favorite St. Thomas by the score of 2-1 on Saturday, Nov. 22 in Northfield.

The Oles have struggled to score goals and currently rank last in the league in goals per game (1.7). Defensively, they are allowing an average of 3.3 goals, which ranks eighth in the league. Despite its lack of offensive production when playing even strength, St. Olaf has proven to be efficient on both special teams. The Oles lead the MIAC on the power play at 21.2-percent (7-33) and rank third on the penalty kill at 86.8-percent (33-38).

Sophomore forward Steven Sherman enters the weekend as the team's leading scorer with seven points off one goal and six assists. Junior forward Peter Lindblad and senior forward Brian Hickey share the team-lead for goals with three each.

Senior goaltender Steve Papciak is 2-7-0 with a goals against average of .280 and a save percentage of .908. Freshman Luke Andriuk got the first start of his career in St. Olaf's most recent outing against Lawrence. Andriuk suffered the loss after allowing four goals and making 27 saves.

KILL OR BE KILLED

Brett Petersen's penalty killers continued to do their job last weekend by negating all five of their combined penalties against Lawrence and Marian. Gustavus heads into its final series of 2014 with one of the hottest penalty killing units in the nation, ranking second amongst all 73 NCAA Division III teams with a kill-rate of 96.4-percent (27-28). The Gusties have allowed just one power play goal all season, which came on Nov. 2 against St. Olaf. Since then, Gustavus has kill off 21 consecutive penalties over the course of eight games.

ADAMS BACK INTO THE FLOW

After seeing his junior season cut short due to a neck injury in late-November of last year, Schyler Adams's long road to recovery was complete in the series-opener against Hamline back on Nov. 21. Last weekend at the Thanksgiving Showcase, Adams made his presence felt with an assist against both Lawrence and Marian. On Friday against the Vikings, he supplied Gavin Tufte the puck while sacrificing his body as the recipient of one of the night's biggest hits. Thanks to his pass, Tufte moved up the right wing unchecked and buried the go-ahead goal. He then provided the second assist on Jack Walsh's game-tying goal on Sunday to complete his two point weekend. Adams has taken three shots and is +3 in three games this season.

SO LONG NOVEMBER

Last weekend's games signified the end of one of Gustavus's busiest months of the year. In their nine November games, Gustavus averaged 2.78 goals per game and was 5-for-25 (20%) on the power play. Defensively, the Gusties allowed an average of 2.45 goals and killed all 22 of their penalties.

The blunt of games during the first half a Division III hockey season are played during November and Gustavus has recently been a slow-starting team. Although they went 6-3-1 in November a year ago, the Gusties averaged three wins the previous four seasons. Gustavus went 3-4-1 in 2012-13, 2-3-2 in 2011-12, 4-2-1 in 2010-11, and 3-3-1 in 2009-10.

WINTER GUSTIELAND

The Gustavus Athletics Department is set to host the first Winter Gustieland Weekend on Friday, Dec. 5 and Saturday, Dec. 6 at Lund Center. The weekend's events will kick off on Friday night at the Gustavus versus St. Olaf men's hockey game. The first 100 students through the door dressed in their favorite ugly Christmas sweater will receive a free Santa hat. There will also be a photo booth where attendees can take a Gustie Christmas card photo with Gus the mascot and friends. The athletics department encourages participants to post their pictures on Instagram and Twitter using the hashtag #wintergustieland for a chance to win a specially designed Gustavus ugly Christmas sweater and a Zamboni ride with Santa between the second and third periods.

BY THE NUMBERS...

76 - The number of shots Gustavus has allowed in the first period this season. The Gusties have consistently started fast and are averaging 10.6 shots compared their opponents 7.6 in the opening 20 minutes.

2 - The number of Gustavus players with 100 or more faceoff wins. Both Tyler Lopic and Andy Pearson have won 100 draws and are winning faceoffs at over an 50-percent clip. Lopic has a faceoff percentage of .555, while Pearson sits behind him at .532. Of players with more than 20 faceoffs under their belt, Conor Deal leads the team with a .576 win percentage (95-70).

3 - The number of Gustavus players who rank inside the top ten in the MIAC in freshman scoring. Conor Deal ranks second with seven points (3G, 4A), Jake Bushey ranks sixth with six (4G, 2A), and Tim Donohue ranks eighth with five (5A).



2014-15 GUSTAVUS ADOLPHUS MEN'S HOCKEY GAME NOTES

HEAD COACH BRETT PETERSEN

15th Season

201-151-36 at Gustavus

Office: 507-933-7615

Email: bpeters4@gustavus.edu



Brett Petersen is in his 15th season as the head coach of the Gustavus Adolphus men's hockey team.

The 2013-14 Gustavus men's hockey team posted its best finish in the conference standings since the 2009-10 season and made it back to the MIAC Playoff Championship for the third straight year after what was the team's seventh consecutive winning season. Gustavus finished second in the MIAC with 38 points after going 12-3-1 within conference play. After defeating Saint John's 3-2 in the MIAC Playoff Semifinals at Don Roberts Ice Rink, the Gusties saw their season end with a 2-1 loss to St. Thomas in front of a capacity crowd at the St. Thomas Ice Arena in the MIAC Playoff Championship. Head Coach Brett Petersen's club finished the year 16-7-4 overall, reaching the 15-win mark for the sixth straight season.

Gustavus had a strong showing in the MIAC's postseason awards last season with three players taking home all-conference honors. Gusties featured on the 20-player All-Conference Team included senior forward Corey Leivermann (North Mankato, Minn.), sophomore goaltender John McLean (Eagan, Minn.), and senior forward Adam Smyth (Burnsville, Minn.). Smyth earned all-conference marks for the second straight year, while Leivermann and McLean were both first time recipients. Corey Leivermann shared the MIAC scoring title after scoring 19 points off a league-leading 12 goals and seven assists inside conference play.

In his 15-plus seasons behind the Gustavus bench, Petersen has compiled a 201-151-36 overall record. His win total at Gustavus ranks second behind legendary coach Don Roberts. He has been named MIAC Coach of the Year twice, once in 2001-02 after helping the Gusties make the jump from ninth place the year before to a second place finish in the conference, and again in 2009-10 after leading the Gusties to their first MIAC Title since 1993. While at Gustavus, Petersen has worked with 18 All-Conference players, three MIAC Player of the Year recipients, eight AHCA All-Americans and one National Player of the Year (David Martinson, 2010).

Within MIAC play, Gustavus holds a record 125-79-24 during the Petersen era. The Gusties have earned a trip to the MIAC Playoffs 13 straight seasons and have advanced to the MIAC Playoff Championship a total of six times under Petersen. Since the turn of the century, Gustavus has qualified for the NCAA Division III Tournament three times in 2009, 2010, and 2012. The Gusties advanced all the way to the NCAA Championship in 2009 where they fell to Neumann 4-1 at Herb Brooks Arena in Lake Placid, N.Y.

Petersen, a Roseville, Minnesota native, started his coaching career with the St. Paul Vulcans of the United States Hockey League (USHL) from 1992-1994. He was named assistant coach at St. Cloud State University of the Western Collegiate Hockey Association (WCHA) in the spring of 1994. During his six years at St. Cloud State, he coordinated the recruiting process for head coach Craig Dahl, while also being closely involved with practice planning, player development and bench coaching.

In the classroom, Petersen received his Bachelor of Science degree in business administration from the University of Denver in 1992 and his Master of Science degree in athletic administration in 2000 from St. Cloud State. He was a four-year letter winner in hockey while at Denver and was named to the WCHA All-Academic team for three years. Petersen served as the team's assistant captain during his junior and senior seasons.

Petersen had the opportunity to represent USA Hockey on several difference occasions during his playing career including the U.S. Olympic Festival in Oklahoma City in 1990 and the World University Games in Sapporo, Japan in 1991. He was drafted by the Calgary Flames of the National Hockey League (NHL), but did not play professional hockey.

Along with this coaching duties at Gustavus, Petersen's responsibilities include managing Lund Arena, the College's multi-purpose facility that houses the ice sheet from October through March for team practices and games. The facility is then used for physical education classes, concerts and conventions the rest of the year.

Brett lives in St. Peter with his wife, Linda, and their daughters, Katherine and Natalie.

THE PETERSEN FILE

Hometown	Coaching	Year	Overall	MIAC	Finish
• Roseville, Minnesota	• 1992-94 - Assistant Coach, St. Paul Vulcans (USHL)	2000-01	6-16-3	3-11-2	9th
		2001-02	14-9-4	9-4-4	2nd
Education	• 1994-00 - Assistant Coach, St. Cloud State (WCHA)	2002-03	14-12-1	8-7-1	4th
		2003-04	12-11-3	9-5-2	3rd
• Bachelor's Degree: Business Administration (Denver '92)	Coaching Awards	2004-05	10-14-1	7-8-1	T-5th
		2005-06	14-11-1	9-7-0	5th
• Master's Degree: Sport Administration (St. Cloud State '00)	• MIAC Coach of the Year - 2002, 2010	2006-07	11-13-2	9-6-1	5th
		2007-08	13-12-1	10-6-0	4th
Family	NCAA Appearances	2008-09	19-11-0	10-6-0	T-2nd
		2009-10	20-7-2	12-2-2	1st
• Wife, Linda; daughters Katherine and Natalie.	MIAC Titles	2010-11	15-10-2	8-6-2	T-4th
		2011-12	17-7-5	8-5-3	2nd
		2012-13	17-8-3	9-5-2	4th
		2013-14	16-7-4	12-3-1	2nd
		2014-15	3-3-4	1-0-3	
	• 2010	TOTALS	201-151-36	124-79-23	



2014-15 GUSTAVUS ADOLPHUS MEN'S HOCKEY GAME NOTES

GAME 2014-15 GUSTAVUS TEAM SUPERLATIVES

Largest Margin of Victory: 3, 6-3 win vs. St. Olaf (Nov. 2)	Most Shots Allowed, 1st Period: 13, 4-3 win vs. UW-Stout (Nov. 8)	Fewest Shots Allowed, OT: 0 (2x), most recent 2-2 tie vs. Hamline (Nov. 22)
Largest Margin of Defeat: 3, 4-1 loss to UW-Stevens Poin (Nov. 7)	Most Shots Allowed, 2nd Period: 18, 2-1 win vs. Concordia (Nov. 14)	Most PIM, Game: 42, 4-3 win vs. UW-Stout (Nov. 8)
Most Goals, Game: 6, 6-3 win vs. St. Olaf (Nov. 2)	Most Shots Allowed, 3rd Period: 12 (2x), most recent 2-1 win vs. Concordia (Nov. 14)	Most Opponent PIM, Game: 55, 4-3 win vs. UW-Stout (Nov. 8)
Most Goals, 1st Period: 2, 2-1 win vs. Concordia (Nov. 14)	Most Shots Allowed, OT: 2 (2x), 3-3 tie vs. Lawrence (Nov. 29)	Most Combined PIM: 76, 4-3 win vs. UW-Stout (Nov. 8)
Most Goals, 2nd Period: 3, 6-3 win vs. St. Olaf (Nov. 2)	Fewest Shots, Game: 15, 2-1 win vs. Concordia (Nov. 14)	Fewest PIM, Game: 4 (2x), most recent 2-1 win vs. Concordia (Nov. 14)
Most Goals, 3rd Period: 3, 6-3 win vs. St. Olaf (Nov. 2)	Fewest Shots, Regulation Period: 3 (2x), second period of 2-1 win vs. Concordia (Nov. 14)	Fewest Opponent PIM, Game: 2, 2-1 win vs. Concordia (Nov. 14)
Most Goals Allowed, 1st Period: 3, 4-2 loss vs. Bethel (Oct. 31)	Fewest Shots, 1st Period: 4 (2x), most recent 3-3 tie vs. Concordia (Nov. 15)	Fewest Combined PIM, Game: 6, 2-1 win vs. Concordia (Nov. 14)
Most Goals Allowed, 2nd Period: 2 (3x), most recent 3-3 tie vs. Lawrence (Nov. 29)	Fewest Shots, 2nd Period: 3, 2-1 win vs. Concordia (Nov. 14)	Most PPG, Game: 1 (6x), most recent 2-2 tie vs. Hamline (Nov. 22)
Most Goals Allowed, 3rd Period: 3, 3-3 tie vs. Concordia (Nov. 15)	Fewest Shots, 3rd Period: 4, 2-1 loss vs. Marina (Nov. 30)	Best PP, Game: 1-1, 2-1 win vs. Concordia (Nov. 14)
Most Shots, Game: 45 (2x), most recent 3-3 tie vs. Lawrence (Nov. 29)	Fewest Shots, OT: 0, 3-3 tie vs. Concordia (Nov. 15)	Most PP Opportunities, Game: 5, 3-3 tie vs. Lawrence (Nov. 29)
Most Shots, 1st Period: 17, 2-1 loss vs. Marian (Nov. 30)	Fewest Shots Allowed, Game: 20, 2-2 tie vs. Hamline (Nov. 22)	Best PK: 5-5, 4-2 loss vs. Bethel (Oct. 31)
Most Shots, 2nd Period: 17, 3-3 tie vs. Lawrence (Nov. 29)	Fewest Shots Allowed, Regulation Period: 2, first period of 2-1 win vs. Concordia (Nov. 14)	Most Opponent PPG, Game: 1, 6-3 win vs. St. Olaf (Nov. 2)
Most Shots, 3rd Period: 15, 3-3 tie vs. Lawrence (Nov. 29)	Fewest Shots Allowed, 1st Period: 2, 2-1 win vs. Concordia (Nov. 14)	Most Opponent PP Opportunities, Game: 5, 4-2 loss vs. Bethel (Oct. 31)
Most Shots, OT: 7, 4-3 win vs. UW-Stout (Nov. 8)	Fewest Shots Allowed, 2nd Period: 7 (2x), 4-1 loss vs. UW-Stevens Point	Best Opponent PK: 5-5, 3-3 tie vs. Lawrence (Nov. 29)
Most Shots Allowed, Game: 37, 3-3 tie vs. Hamline (Nov. 21)	Fewest Shots Allowed, 3rd Period: 3, 3-3 tie vs. Lawrence (Nov. 29)	



2014-15 GUSTAVUS ADOLPHUS MEN'S HOCKEY GAME NOTES

2014-15 GUSTAVUS MEN'S HOCKEY ROSTER

<u>NO.</u>	<u>NAME</u>	<u>YR</u>	<u>POS</u>	<u>HGT</u>	<u>WGT</u>	<u>HOMETOWN</u>	<u>HIGH SCHOOL</u>	<u>LAST TEAM</u>
1	John McLean	Jr.	G	6-8	220	Eagan, Minn.	Minehaha Academy	Wisconsin Wilderness (SIJHL)
2	Sam Smith	Sr.	D	5-11	205	Vancouver, B.C.	Flower Mound	Valley Jr. Warriors (EHL)
3	Jared Docken	So.	D	5-10	175	Northfield, Minn.	Northfield	Brookings Blizzard (NAHL)
4	Jack Walsh ^C	Sr.	F	6-3	200	Mahtomedi, Minn.	Mill-Murray	Austin Bruins (NAHL)
5	Drew Aspinwall	So.	D	6-1	195	Maple Grove, Minn.	Maple Grove	Fresno Monsters (NAHL)
6	Tyler Lopic ^C	Sr.	F	6-2	200	New Prague, Minn.	New Prague	Wisconsin (WCHA)
7	Schyler Adams	Sr.	F	5-9	185	New Prague, Minn.	New Prague	Owatonna Express (NAHL)
9	Jake McCann	Fr.	F	5-9	165	Shoreview, Minn.	Roseville	Minot Minotauros (NAHL)
10	Gavin Tufte	Jr.	F	6-0	220	Blaine, Minn.	Blaine	UW-Stout (WIAC)
11	Jake Bushey	Fr.	D	6-0	180	Duluth, Minn.	Duluth Marshall	Fairbanks Ice Dogs (NAHL)
12	Conor Deal	Fr.	F	5-11	185	Anchorage, Alaska	Polaris K-12 School	Kenai River Brown Bears (NAHL)
13	Cameron Jackson	So.	D	6-1	190	Lakeville, Minn.	Lakeville South	Fort Frances Lakers (SIJHL)
14	Tim Donohue	Fr.	F	5-11	195	Bloomington, Minn.	Jefferson	Minot Minotauros (NAHL)
15	Matt Petersen	So.	D	5-11	180	Center City, Minn.	Chisago Lakes	Granite City Lumberjacks (NA3HL)
16	Darren Lopic	Jr.	F	6-2	210	New Prague, Minn.	New Prague	Odessa Jackalopes (NAHL)
17	Sam Akins	So.	F	6-2	205	Stowe, Vt	Northwood	Dallas Ice Jets (WSHL)
18	Colin Herson	Fr.	F	5-11	180	Bloomington, Minn.	Jefferson	Minnesota Magicians (NAHL)
19	Sam Majka	So.	F	6-0	190	Wayzata, Minn.	Wayzata	Coquitlam Express (BCHL)
20	Nate Paulsen	Sr.	D	6-2	195	La Habra, Calif.	La Habra	Wisconsin Wilderness (SIJHL)
21	Mason Wyman	So.	F	6-3	210	Burnsville, Minn.	Burnsville	Minnesota Flying Aces (NA3HL)
22	Andy Pearson	Sr.	F	5-10	180	Burnsville, Minn.	Burnsville	Alaska Avalanche (NAHL)
23	Blake Barnes	So.	D	5-11	175	Broken Arrow, Okla.	Shattuck-St. Mary's	Valley Jr. Warriors (EHL)
24	Cory Ellis	Sr.	F	6-2	215	St. Paul, Minn.	St. Paul Johnson	Austin Bruins (NAHL)
25	Ross Kovacs	So.	D	6-3	215	Dickinson, N.D.	Dickinson	Hawkesbury Hawks (CCHL)
26	Blake Schammel	Sr.	F	5-10	190	Red Wing, Minn.	Red Wing	Bismarck Bobcats (NAHL)
27	Joncarlo Westerlund	So.	F	5-11	185	Baudette, Minn.	Lake of the Woods	Dallas Ice Jets (WSHL)
30	Isaak Tjaden	Fr.	G	5-9	155	Eagan, Minn.	Northfield	Billings Bulls (AWHL)
35	Erik Johnson	So.	G	6-1	180	Rice, Minn.	Sauk Rapids-Rice	Rochester Ice Hawks (MNJHL)

HEAD COACH: Brett Petersen (15th Season)

ASSISTANT COACH: David Martinson

C: Denotes Captain



2014-15 GUSTAVUS ADOLPHUS MEN'S HOCKEY GAME NOTES

2014-15 GUSTAVUS MEN'S HOCKEY PRONUNCIATION GUIDE



FRONT ROW (L TO R) | Erik Johnson, Andy Pearson, Sam Smith, Nate Paulsen, Tyler Lopic, Jack Walsh, Cory Ellis, Blake Schammel, Schyler Adams, John McLean

SECOND ROW (L TO R) | Head Coach Brett Petersen, Cameron Jackson, Darren Lopic, Ross Kovacs, Mason Wyman, Sam Akins, Gavin Tufte, Drew Aspinwall, Sam Majka, Isaak Tjaden, Assistant Coach David Martinson

TOP ROW (L TO R) | Student Manager Andy Regner, Jake McCann, Joncarlo Westerlund, Coin Hernon, Blake Barnes, Jake Bushey, Tim Donohue, Matt Petersen, Conor Deal, Jared Docken

PRONUNCIATION GUIDE

7	Schyler Adams (SKY-ler)	19	Sam Majka (MAY-kuh)
10	Gavin Tufte (TUFF-tee)	21	Mason Wyman (WHY-man)
11	Jake Bushey (BUSH-ie)	25	Ross Kovacs (COE-vacks)
14	Tim Donohue (DONNA-hue)	26	Blake Schammel (SHAM-el)
17	Sam Akins (A (as in acorn)-kins)	30	Isaak Tjaden (CHAY-den)
25	Ross Kovacs (COE-vacks)		(CH as in church)

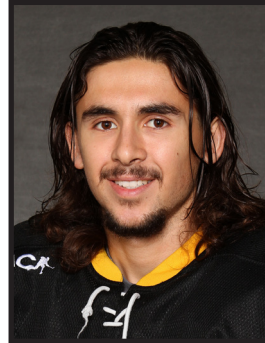


2014-15 GUSTAVUS ADOLPHUS MEN'S HOCKEY GAME NOTES

2014-15 INDIVIDUAL GAME HIGHS



No. 1
John McLean
Fewest Goals: N/A
Most Saves: N/A
Most Minutes: N/A
Winning-Streak: N/A



No. 5
Drew Aspinwall
Goals: 1, Nov. 8 vs. UW-Stout
Assists: 2, Nov. 2 vs. St. Olaf
Points: 2, Nov. 2 vs. St. Olaf
Plus/Minus: +1 (3x), last Nov. 21 vs. Hamline
PIM: 2 (2x), last Nov. 21 vs. Hamline
Shots On Goal: 4 (2x), last Nov. 30 vs. Marian



No. 2
Sam Smith
Goals: N/A
Assists: N/A
Points: N/A
Plus/Minus: +2, Nov. 8 vs. UW-Stout
PIM: 2 (4x), last Nov. 29 vs. Lawrence
Shots On Goal: 4, Nov. 29 vs. Lawrence



No. 6
Tyler Lopic
Goals: 2, Nov. 22 vs. Hamline
Assists: 1, Nov. 2 vs. St. Olaf
Points: 2, Nov. 22 vs. Hamline
Plus/Minus: +1 (2x), Nov. 22 vs. Hamline
PIM: 4, Nov. 7 vs. UW-Stevens Point
Shots On Goal: 6, Nov. 22 vs. Hamline



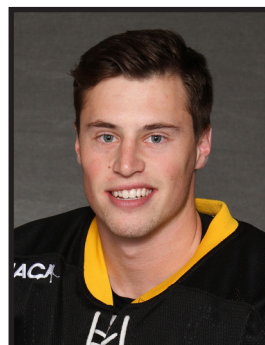
No. 3
Jared Docken
Goals: N/A
Assists: 1 (2x), last Nov. 22 vs. Hamline
Points: 1 (2x), last Nov. 22 vs. Hamline
Plus/Minus: +1 (3x), last Nov. 8 vs. UW-Stout
PIM: 2, Nov. 7 vs. UW-Stevens Point
Shots On Goal: 4, Nov. 8 vs. UW-Stout



No. 7
Schyler Adams
Goals: N/A
Assists: 1 (2x), last Nov. 30 vs. Marian
Points: 1 (2x), last Nov. 30 vs. Marian
Plus/Minus: +1 (3x), last Nov. 30 vs. Marian
PIM: N/A
Shots On Goal: 2, Nov. 29 vs. Lawrence



No. 4
Jack Walsh
Goals: 1, Nov. 30 vs. Marian
Assists: 1, Nov. 8 vs. UW-Stout
Points: 1 (2x), Nov. 30 vs. Marian
Plus/Minus: +1 (2x), last Nov. 30 vs. Marian
PIM: 2 (4x), last Nov. 30 vs. Marian
Shots On Goal: 4, Nov. 30 vs. Marian



No. 9
Jake McCann
Goals: 1, Nov. 29 vs. Lawrence
Assists: 1 (2x), Nov. 29 vs. Lawrence
Points: 2, Nov. 29 vs. Lawrence
Plus/Minus: +2, Nov. 29 vs. Lawrence
PIM: 2 (2x), last Nov. 14 vs. Concordia
Shots On Goal: 3, Nov. 29 vs. Lawrence



2014-15 GUSTAVUS ADOLPHUS MEN'S HOCKEY GAME NOTES

2014-15 INDIVIDUAL GAME HIGHS



No. 10

Gavin Tufte

Goals: 1 (3x), Nov. 29 vs. Lawrence

Assists: 1 (2x), last Nov. 21 vs. Hamline

Points: 2, Nov. 2 vs. St. Olaf

Plus/Minus: +2, Nov. 2 vs. St. Olaf

PIM: 2, Nov. 8 vs. UW-Stout

Shots On Goal: 4 (2x), Nov. 8 vs. UW-Stout



No. 14

Tim Donohue

Goals: N/A

Assists: 2, Nov. 15 vs. Concordia

Points: 2, Nov. 15 vs. Concordia

Plus/Minus: +2 (2x), last Nov. 29 vs. Lawrence

PIM: 4, Nov. 22 vs. Hamline

Shots On Goal: 4 (2x), last Nov. 29 vs. Lawrence



No. 11

Jake Bushey

Goals: 2, Nov. 2 vs. St. Olaf

Assists: 1 (2x), Nov. 29 vs. Lawrence

Points: 3, Nov. 2 vs. St. Olaf

Plus/Minus: +1, Nov. 21 vs. Hamline

PIM: 15, Nov. 8 vs. UW-Stout

Shots On Goal: 5, Nov. 8 vs. UW-Stout



No. 15

Matt Petersen

Goals: N/A

Assists: N/A

Points: N/A

Plus/Minus: N/A

PIM: N/A

Shots On Goal: N/A



No. 12

Conor Deal

Goals: 1 (3x), last Nov. 15 vs. Concordia

Assists: 2, Nov. 15 vs. Concordia

Points: 3, Nov. 15 vs. Concordia

Plus/Minus: +2 (2x), last Nov. 15 vs. Concordia

PIM: 2 (2x), Nov. 7 vs. UW-Stevens Point

Shots On Goal: 5, Nov. 22 vs. Hamline



No. 16

Darren Lopic

Goals: 1, Nov. 21 vs. Hamline

Assists: 1 (2x), last Nov. 7 vs. UW-Stevens Point

Points: 1 (3x), last Nov. 21 vs. Hamline

Plus/Minus: 0 (4x), last Nov. 29 vs. Lawrence

PIM: 15, Nov. 8 vs. UW-Stout

Shots On Goal: 5 (2x), Nov. 30 vs. Marian



No. 13

Cameron Jackson

Goals: 1, Nov. 2 vs. St. Olaf

Assists: 1, Nov. 14 vs. Concordia

Points: 1 (2x), last Nov. 14 vs. Concordia

Plus/Minus: +3, Nov. 2 vs. St. Olaf

PIM: N/A

Shots On Goal: 2 (4x), last Nov. 29 vs. Lawrence



No. 17

Sam Akins

Goals: N/A

Assists: N/A

Points: N/A

Plus/Minus: +1, Nov. 2 vs. St. Olaf

PIM: N/A

Shots On Goal: 2, Nov. 2 vs. St. Olaf

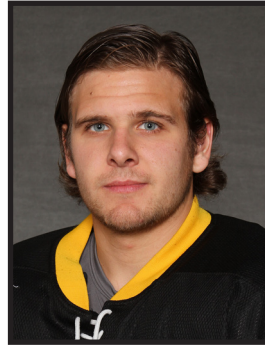


2014-15 GUSTAVUS ADOLPHUS MEN'S HOCKEY GAME NOTES

2014-15 INDIVIDUAL GAME HIGHS



No. 18
Colin Herson
Goals: 1, Nov. 2 vs. St. Olaf
Assists: N/A
Points: 1, Nov. 2 vs. St. Olaf
Plus/Minus: +1, Nov. 2 vs. St. Olaf
PIM: 2, Nov. 21 vs. Hamline
Shots On Goal: 5, Nov. 2 vs. St. Olaf



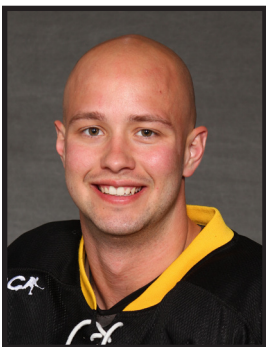
No. 22
Andy Pearson
Goals: 1 (2x), last Nov. 29 vs. Lawrence
Assists: 1 (5x), last Nov. 29 vs. Lawrence
Points: 2, Nov. 29 vs. Lawrence
Plus/Minus: +3, Nov. 2 vs. St. Olaf
PIM: N/A
Shots On Goal: 6, Nov. 29 vs. Lawrence



No. 19
Sam Majka
Goals: N/A
Assists: 1, Nov. 14 vs. Concordia
Points: 1, Nov. 14 vs. Concordia
Plus/Minus: +1, Oct. 31 vs. Bethel
PIM: 2, Nov. 15 vs. Concordia
Shots On Goal: 4 (2x), last Nov. 30 vs. Marian



No. 23
Blake Barnes
Goals: N/A
Assists: N/A
Points: N/A
Plus/Minus: 0 (2x), last Nov. 29 vs. Lawrence
PIM: 2, Nov. 8 vs. UW-Stout
Shots On Goal: 1 (3x), last Nov. 30 vs. Marian



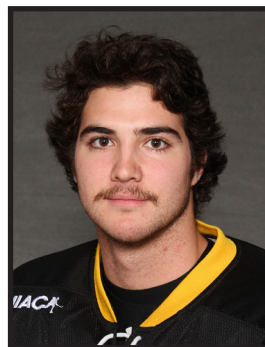
No. 20
Nate Paulsen
Goals: N/A
Assists: N/A
Points: N/A
Plus/Minus: N/A
PIM: N/A
Shots On Goal: N/A



No. 24
Cory Ellis
Goals: N/A
Assists: 1 (2x), last Nov. 30 vs. Marian
Points: 1 (2x), last Nov. 30 vs. Marian
Plus/Minus: +1, Nov. 30 vs. Marian
PIM: N/A
Shots On Goal: 3 (3x), Nov. 29 vs. Lawrence



No. 21
Mason Wyman
Goals: N/A
Assists: N/A
Points: N/A
Plus/Minus: 0 (2x), last Nov. 15 vs. Concordia
PIM: 2, Nov. 15 vs. Concordia
Shots On Goal: 2, Oct. 31 vs. Bethel

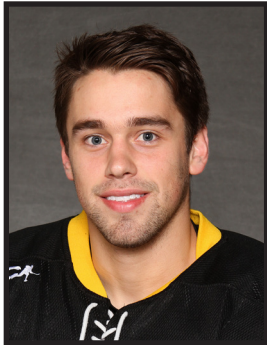


No. 25
Ross Kovacs
Goals: N/A
Assists: N/A
Points: N/A
Plus/Minus: +1 (3x), last Nov. 21 vs. Hamline
PIM: 2, Nov. 2 vs. St. Olaf
Shots On Goal: 2 (3x), last Nov. 21 vs. Hamline



2014-15 GUSTAVUS ADOLPHUS MEN'S HOCKEY GAME NOTES

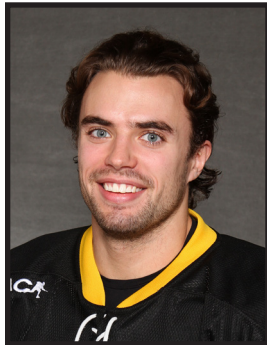
2014-15 INDIVIDUAL GAME HIGHS



No. 26
 Blake Schammel
Goals: 2, Nov. 15 vs. Concordia
Assists: 1 (2x), last Nov. 15 vs. Concordia
Points: 3, Nov. 15 vs. Concordia
Plus/Minus: +2, Nov. 15 vs. Concordia
PIM: 2 (3x), last Nov. 30 vs. Marian
Shots On Goal: 6 (2x), Nov. 21 vs. Hamline



No. 30
 Isaak Tjaden
Fewest Goals: 2, Nov. 30 vs. Marian
Most Saves: 21, Nov. 30 vs. Marian
Most Minutes: 58:58, Nov. 30 vs. Marian
Winning-Streak: N/A



No. 27
 Joncarlo Westerlund
Goals: 1, Nov. 21 vs Hamline
Assists: 1, Nov. 22 vs Hamline
Points: 1 (2x), last Nov. 22 vs Hamline
Plus/Minus: +1 (2x), last Nov. 22 vs. Hamline
PIM: N/A
Shots On Goal: 3, Nov. 21 vs. Hamline



No. 35
 Erik Johnson
Fewest Goals: 1, Nov. 14 vs. Concordia
Most Saves: 32, Nov. 8 vs. UW-Stout
Most Minutes: 65:00 (4x), last Nov. 29 vs. Lawrence
Winning-Streak: 1





2014-15 GUSTAVUS ADOLPHUS MEN'S HOCKEY GAME NOTES

2014-15 COMBINED STATISTICS

Gustavus Adolphus Hockey Gustavus Adolphus Combined Team Statistics (as of Dec 01, 2014) All games

Date	Opponent	Score	Att.
Oct 31	vs Bethel University	L 2-4	300
Nov 02	vs St. Olaf College	W 6-3	100
Nov 07	#2 UW-STEVENS POINT	L 1-4	515
Nov 08	UW-STOUT	Wot 4-3	535
* Nov 14	at Concordia-M'head	W 2-1	317
* Nov 15	at Concordia-M'head	To2 3-3	253
* Nov 21	at Hamline	Tot 3-3	475
* Nov 22	HAMLIN	To2 2-2	541
Nov 29	LAWRENCE	Tot 3-3	234
Nov 30	MARIAN	L 1-2	186

TEAM STATISTICS	GAC	OPP
SHOT STATISTICS		
Goals-Shot attempts	27-325	28-278
Shot pct.	.083	.101
Goals/Game	2.7	2.8
Shots/Game	32.5	27.8
POWER PLAYS		
Goals-Power Plays	6-28	0-27
Conversion Percent	.214	.000
Shot Attempts	43	35
Shot Percent	.140	.000
SHORT-HANDED		
Goals-Shot attempts	2-8	5-11
Shot Percent	.250	.455
GOAL BREAKDOWN		
Power Play	6	0
Short-handed	2	5
Empty net	1	1
Penalty	0	0
Unassisted	1	4
Overtime	1	0
Shootout	0	0
Delayed Penalty	0	0
PENALTIES		
Number	43	46
Minutes	108	144
Penalties/Game	4.3	4.6
Pen minutes/Game	10.8	14.4
FACEOFFS (W-L)	384-316	316-384
Faceoff W-L Pct.	.549	.451
SHOOTOUTS (Made-Att)	4-9	3-9

Record:	Overall	Home	Away	Neutral
ALL GAMES	3-3-4	1-2-2	1-0-2	1-1-0
CONFERENCE	1-0-3	0-0-1	1-0-2	0-0-0
NON-CONFERENCE	2-3-1	1-2-1	0-0-0	1-1-0

##	Player	gp	g	a	pts	sh	sh%	pen-min	pp	sh
12	Conor Deal	10	3	4	7	22	.136	2-4	1	0
22	Andy Pearson	10	2	5	7	32	.062	0-0	0	0
11	Jake Bushey	9	4	2	6	14	.286	2-15	2	0
26	Blake Schammel	10	4	2	6	26	.154	3-6	2	0
6	Tyler Lopic	10	3	2	5	23	.130	6-12	1	1
10	Gavin Tuffe	10	3	2	5	21	.143	1-2	0	0
14	Tim Donohue	10	0	5	5	19	.000	6-12	0	0
5	Drew Aspinwall	10	1	2	3	19	.053	2-4	0	1
16	Darren Lopic	9	1	2	3	25	.040	5-21	0	0
9	Jake McCann	7	1	2	3	6	.167	2-4	0	0
13	Cameron Jackson	7	2	0	2	9	.222	0-0	0	0
4	Jack Walsh	10	1	1	2	17	.059	4-8	0	0
27	Joncarlo Westerlund	2	1	1	2	4	.250	0-0	0	0
7	Schlyer Adams	3	0	2	2	2	.000	0-0	0	0
3	Jared Docken	10	0	2	2	11	.000	1-2	0	0
24	Cory Ellis	9	0	2	2	9	.000	0-0	0	0
18	Colin Hernon	7	1	0	1	20	.050	1-2	0	0
19	Sam Majka	7	0	1	1	15	.000	1-2	0	0
17	Sam Akins	3	0	0	0	3	.000	0-0	0	0
23	Blake Barnes	5	0	0	0	3	.000	1-2	0	0
25	Ross Kovacs	9	0	0	0	8	.000	1-2	0	0
2	Sam Smith	10	0	0	0	15	.000	4-8	0	0
21	Mason Wyman	4	0	0	0	2	.000	1-2	0	0
Total		10	27	37	64	325	.083	43-108	6	2
Opponents		10	28	35	63	278	.101	46-144	0	5

##	Goalie	gp	min	ga	gaavg	saves	save%	w-l-t
30	Isaak Tjaden	1	58:58	2	2.04	21	.913	0-1-0
35	Erik Johnson	9	561:09	25	2.67	229	.902	3-2-3
TM	EMPTY NET	3	4:18	1	-	0	.000	0-0-0
Total		10	624:25	28	2.69	250	.899	3-3-3
Opponents		10	624:25	27	2.59	298	.917	3-3-3

Attendance Summary	GAC	Opponent
Total	2011	1045
Dates/Avg Per Date	5/402	3/348
Neutral Site #/Avg	2/200	

Goals by Period	1st	2nd	3rd	OT	Total
Gustavus Adolphus	8	8	10	1	27
Opponents	11	9	8	0	28

Shots by Period	1st	2nd	3rd	OT	Total
Gustavus Adolphus	106	107	97	15	325
Opponents	76	111	85	6	278

Saves by Period	1st	2nd	3rd	OT	Total
Gustavus Adolphus	65	102	77	6	250
Opponents	98	99	87	14	298



2014-15 GUSTAVUS ADOLPHUS MEN'S HOCKEY GAME NOTES

2014-15 TEAM STATISTICS

Gustavus Adolphus Hockey Gustavus Adolphus Overall Team Statistics (as of Dec 01, 2014) All games

Overall: 3-3-4 Conf: 1-0-3 Home: 1-2-2 Away: 1-0-2 Neut: 1-1-0

TEAM STATISTICS	GAC	OPP
SHOT STATISTICS		
Goals-Shot attempts	27-325	28-278
Shot pct.	.083	.101
Goals/Game	2.7	2.8
Shots/Game	32.5	27.8
Assists	37	35
POWER PLAYS		
Goals-Power Plays	6-28	0-27
Conversion Percent	.214	.000
Shot Attempts	43	35
Shot Percent	.140	.000
SHORT-HANDED		
Goals-Shot attempts	2-8	5-11
Shot Percent	.250	.455
GOAL BREAKDOWN		
Total Goals	27	28
Power Play	6	0
Short-handed	2	5
Empty net	1	1
Penalty	0	0
Unassisted	1	4
Overtime	1	0
Shootout	0	0
Delayed Penalty	0	0
PENALTIES		
Number	43	46
Minutes	108	144
Penalties/Game	4.3	4.6
Pen minutes/Game	10.8	14.4
Minor	39	37
Major	2	4
10-minute Misconduct	0	1
Game Misconduct	0	1
Gross Misconduct	0	0
Match	2	3
FACEOFFS (W-L)	384-316	316-384
Faceoff W-L Pct.	.549	.451
SHOOTOUTS (Made-Att)	4-9	3-9
ATTENDANCE		
Total	2011	1045
Dates/Avg Per Date	5/402	3/348
Neutral Site #/Avg	2/200	

Goals by Period	1st	2nd	3rd	OT	Total
Gustavus Adolphus	8	8	10	1	27
Opponents	11	9	8	0	28

Shots by Period	1st	2nd	3rd	OT	Total
Gustavus Adolphus	106	107	97	15	325
Opponents	76	111	85	6	278

Saves by Period	1st	2nd	3rd	OT	Total
Gustavus Adolphus	65	102	77	6	250
Opponents	98	99	87	14	298



2014-15 GUSTAVUS ADOLPHUS MEN'S HOCKEY GAME NOTES

2014-15 INDIVIDUAL STATISTICS

Gustavus Adolphus Hockey Gustavus Adolphus Overall Individual Statistics (as of Dec 01, 2014) All games

Overall: 3-3-4 Conf: 1-0-3 Home: 1-2-2 Away: 1-0-2 Neut: 1-1-0

##	Player	gp	Shots					+-	Penalties				Goals									
			g	a	pts	sh	sh%		pen-min	min	maj	oth	pp	sh	fg	gw	gt	ot	ht	pn	ua	
12	Conor Deal	10	3	4	7	22	.136	+1	2-4	2	0	0	1	0	1	1	0	0	0	0	0	0
22	Andy Pearson	10	2	5	7	32	.062	0	0-0	0	0	0	0	0	0	0	1	0	0	0	0	0
11	Jake Bushey	9	4	2	6	14	.286	-4	2-15	0	1	1	2	0	0	0	0	0	0	0	0	0
26	Blake Schammel	10	4	2	6	26	.154	-3	3-6	3	0	0	2	0	0	0	0	0	0	0	0	0
6	Tyler Lopic	10	3	2	5	23	.130	-5	6-12	6	0	0	1	1	1	0	0	0	0	0	0	0
10	Gavin Tuffe	10	3	2	5	21	.143	-1	1-2	1	0	0	0	0	0	1	0	1	0	0	0	0
14	Tim Donohue	10	0	5	5	19	.000	+3	6-12	6	0	0	0	0	0	0	0	0	0	0	0	0
5	Drew Aspinwall	10	1	2	3	19	.053	-3	2-4	2	0	0	0	1	0	0	0	0	0	0	0	1
16	Darren Lopic	9	1	2	3	25	.040	-6	5-21	3	1	1	0	0	0	0	0	0	0	0	0	0
9	Jake McCann	7	1	2	3	6	.167	-1	2-4	2	0	0	0	0	1	0	0	0	0	0	0	0
13	Cameron Jackson	7	2	0	2	9	.222	+5	0-0	0	0	0	0	0	1	1	0	0	0	0	0	0
4	Jack Walsh	10	1	1	2	17	.059	-2	4-8	4	0	0	0	0	0	0	0	0	0	0	0	0
27	Joncarlo Westerlund	2	1	1	2	4	.250	+2	0-0	0	0	0	0	0	0	0	1	0	0	0	0	0
7	Schylar Adams	3	0	2	2	2	.000	+3	0-0	0	0	0	0	0	0	0	0	0	0	0	0	0
3	Jared Docken	10	0	2	2	11	.000	-3	1-2	1	0	0	0	0	0	0	0	0	0	0	0	0
24	Cory Ellis	9	0	2	2	9	.000	-4	0-0	0	0	0	0	0	0	0	0	0	0	0	0	0
18	Colin Hemon	7	1	0	1	20	.050	-2	1-2	1	0	0	0	0	0	0	0	0	0	0	0	0
19	Sam Majka	7	0	1	1	15	.000	-3	1-2	1	0	0	0	0	0	0	0	0	0	0	0	0
17	Sam Akins	3	0	0	0	3	.000	-1	0-0	0	0	0	0	0	0	0	0	0	0	0	0	0
23	Blake Barnes	5	0	0	0	3	.000	-6	1-2	1	0	0	0	0	0	0	0	0	0	0	0	0
25	Ross Kovacs	9	0	0	0	8	.000	0	1-2	1	0	0	0	0	0	0	0	0	0	0	0	0
2	Sam Smith	10	0	0	0	15	.000	-4	4-8	4	0	0	0	0	0	0	0	0	0	0	0	0
21	Mason Wyman	4	0	0	0	2	.000	-3	1-2	1	0	0	0	0	0	0	0	0	0	0	0	0
Total		10	27	37	64	325	.083	-37	43-108	39	2	2	6	2	4	3	2	1	0	0	0	1
Opponents		10	28	35	63	278	.101	-	46-144	37	4	5	0	5	6	3	2	0	0	0	0	4

##	Goalie	gp-gs	Goal average		Saves		Record				Goals allowed								
			minutes	ga	avg	saves	pct	w	l	t	sho	pp	sh	en	pen	sog			
30	Isaak Tjaden	1-1	58:58	2	2.04	21	.913	0	1	0	0	0	0	0	0	0	0	0	0
35	Erik Johnson	9-9	561:09	25	2.67	229	.902	3	2	3	0	0	0	5	0	0	0	0	0
TM	EMPTY NET	3-0	4:18	1	-	0	.000	0	0	0	0	0	0	0	1	0	0	0	0
Total		10-0	624:25	28	2.69	250	.899	3	3	3	0	0	0	5	1	0	0	0	0
Opponents		10-0	624:25	27	2.59	298	.917	3	3	3	0	0	0	6	2	1	0	0	0



2014-15 GUSTAVUS ADOLPHUS MEN'S HOCKEY GAME NOTES

2014-15 CATEGORY LEADERS

Gustavus Adolphus Hockey Gustavus Adolphus Category Leaders (as of Dec 01, 2014) All games

##	Points	GP	G	A	Pts	Sh
12	Conor Deal	10	3	4	7	22
22	Andy Pearson	10	2	5	7	32
11	Jake Bushey	9	4	2	6	14
26	Blake Schammel	10	4	2	6	26
6	Tyler Lopic	10	3	2	5	23
10	Gavin Tufte	10	3	2	5	21
14	Tim Donohue	10	0	5	5	19
5	Drew Aspinwall	10	1	2	3	19
16	Darren Lopic	9	1	2	3	25
9	Jake McCann	7	1	2	3	6

##	Goals	GP	G	A	Pts	Sh
11	Jake Bushey	9	4	2	6	14
26	Blake Schammel	10	4	2	6	26
12	Conor Deal	10	3	4	7	22
6	Tyler Lopic	10	3	2	5	23
10	Gavin Tufte	10	3	2	5	21
22	Andy Pearson	10	2	5	7	32
13	Cameron Jackson	7	2	0	2	9
5	Drew Aspinwall	10	1	2	3	19
16	Darren Lopic	9	1	2	3	25
9	Jake McCann	7	1	2	3	6

##	Power-Play Goals	GP	PPG
11	Jake Bushey	9	2
26	Blake Schammel	10	2

##	Short-Handed Goals	GP	SHG
6	Tyler Lopic	10	1
5	Drew Aspinwall	10	1

##	Game-Winning Goals	GP	GWG
12	Conor Deal	10	1
10	Gavin Tufte	10	1
13	Cameron Jackson	7	1

##	Plus/Minus	GP	+/-
13	Cameron Jackson	7	+5
14	Tim Donohue	10	+3
7	Schylar Adams	3	+3
27	Joncarlo Westerlund	2	+2
12	Conor Deal	10	+1

##	Assists	GP	G	A	Pts	Sh
22	Andy Pearson	10	2	5	7	32
14	Tim Donohue	10	0	5	5	19
12	Conor Deal	10	3	4	7	22
11	Jake Bushey	9	4	2	6	14
26	Blake Schammel	10	4	2	6	26
6	Tyler Lopic	10	3	2	5	23
10	Gavin Tufte	10	3	2	5	21
5	Drew Aspinwall	10	1	2	3	19
16	Darren Lopic	9	1	2	3	25
9	Jake McCann	7	1	2	3	6

##	Shots	GP	G	A	Pts	Sh	Sh%
22	Andy Pearson	10	2	5	7	32	.062
26	Blake Schammel	10	4	2	6	26	.154
16	Darren Lopic	9	1	2	3	25	.040
6	Tyler Lopic	10	3	2	5	23	.130
12	Conor Deal	10	3	4	7	22	.136
10	Gavin Tufte	10	3	2	5	21	.143
18	Colin Hernon	7	1	0	1	20	.050
14	Tim Donohue	10	0	5	5	19	.000
5	Drew Aspinwall	10	1	2	3	19	.053
4	Jack Walsh	10	1	1	2	17	.059

##	Shot Pct.	GP	G	A	Pts	Sh	Sh%
11	Jake Bushey	9	4	2	6	14	.286
27	Joncarlo Westerlund	2	1	1	2	4	.250
13	Cameron Jackson	7	2	0	2	9	.222
9	Jake McCann	7	1	2	3	6	.167
26	Blake Schammel	10	4	2	6	26	.154
10	Gavin Tufte	10	3	2	5	21	.143
12	Conor Deal	10	3	4	7	22	.136
6	Tyler Lopic	10	3	2	5	23	.130
22	Andy Pearson	10	2	5	7	32	.062
4	Jack Walsh	10	1	1	2	17	.059

##	Penalties	GP	Pen	Min
14	Tim Donohue	10	6	12
6	Tyler Lopic	10	6	12
16	Darren Lopic	9	5	21
2	Sam Smith	10	4	8
4	Jack Walsh	10	4	8
26	Blake Schammel	10	3	6
9	Jake McCann	7	2	4
5	Drew Aspinwall	10	2	4
11	Jake Bushey	9	2	15
12	Conor Deal	10	2	4

##	Penalty Minutes	GP	Pen	Min
16	Darren Lopic	9	5	21
11	Jake Bushey	9	2	15
14	Tim Donohue	10	6	12
6	Tyler Lopic	10	6	12
4	Jack Walsh	10	4	8
2	Sam Smith	10	4	8
26	Blake Schammel	10	3	6
12	Conor Deal	10	2	4
5	Drew Aspinwall	10	2	4
9	Jake McCann	7	2	4



2014-15 GUSTAVUS ADOLPHUS MEN'S HOCKEY GAME NOTES

2014-15 GOALS-ASSISTS-POINTS

Gustavus Adolphus Hockey Gustavus Adolphus Game-by-Game Goals-Assists-Points (as of Dec 01, 2014) All games

Opponent	Date	Score	2 SMITH,SAM	3 DOCKEN,JAR	4 WALSH,JACK	5 ASPINWALL,	6 LAPIC, TYLER	7 ADAMS,SCHY	9 MCCANN,JAK	10 TUFTE,GAVIN	11 BUSHEY,JAK	12 DEAL,CONOR	13 JACKSON,CA
vs BU	Oct 31	2-4 L	0-0-0	0-0-0	0-0-0	0-0-0	0-0-0	DNP	DNP	0-0-0	0-0-0	1-0-1	DNP
vs STO	Nov 02	6-3 W	0-0-0	0-0-0	0-0-0	0-2-2	0-1-1	DNP	0-1-1	1-1-2	2-1-3	0-1-1	1-0-1
UWSP	Nov 07	1-4 L	0-0-0	0-0-0	0-1-1	0-0-0	0-0-0	DNP	0-0-0	0-0-0	1-0-1	0-0-0	0-0-0
STOUT	Nov 08	4-3 W	0-0-0	0-1-1	0-0-0	1-0-1	1-1-2	DNP	0-0-0	1-0-1	1-0-1	0-0-0	DNP
at CC	Nov 14	2-1 W	0-0-0	0-0-0	0-0-0	0-0-0	0-0-0	DNP	0-0-0	0-0-0	DNP	1-0-1	1-0-1
at CC	Nov 15	3-3 t	0-0-0	0-0-0	0-0-0	0-0-0	0-0-0	DNP	0-0-0	0-0-0	0-0-0	1-2-3	0-0-0
at HUM	Nov 21	3-3 t	0-0-0	0-0-0	0-0-0	0-0-0	0-0-0	0-0-0	DNP	0-1-1	0-0-0	0-1-1	0-0-0
HUM	Nov 22	2-2 t	0-0-0	0-1-1	0-0-0	0-0-0	2-0-2	DNP	DNP	0-0-0	0-0-0	0-0-0	0-0-0
LU	Nov 29	3-3 t	0-0-0	0-0-0	0-0-0	0-0-0	0-0-0	0-1-1	1-1-2	1-0-1	0-1-1	0-0-0	0-0-0
MU	Nov 30	1-2 L	0-0-0	0-0-0	1-0-1	0-0-0	0-0-0	0-1-1	0-0-0	0-0-0	0-0-0	0-0-0	DNP

Opponent	Date	Score	14 DONOHUE, TI	16 LAPIC, DARRE	17 AKINS, SAM	18 HERNON, COL	19 MAJKA, SAM	21 WYMAN, MAS	22 PEARSON, AN	23 BARNES, BLA	24 ELLIS, CORY	25 KOVACS, ROS	26 SCHAMMEL, B
vs BU	Oct 31	2-4 L	0-0-0	0-1-1	0-0-0	DNP	0-0-0	0-0-0	0-1-1	0-0-0	0-0-0	0-0-0	1-0-1
vs STO	Nov 02	6-3 W	0-1-1	0-0-0	0-0-0	1-0-1	DNP	DNP	1-0-1	DNP	0-0-0	0-0-0	0-1-1
UWSP	Nov 07	1-4 L	0-0-0	0-1-1	0-0-0	0-0-0	DNP	DNP	0-0-0	DNP	0-0-0	0-0-0	0-0-0
STOUT	Nov 08	4-3 W	0-0-0	0-0-0	DNP	0-0-0	DNP	0-0-0	0-1-1	0-0-0	0-0-0	0-0-0	0-0-0
at CC	Nov 14	2-1 W	0-1-1	DNP	DNP	0-0-0	0-1-1	0-0-0	0-1-1	0-0-0	0-0-0	0-0-0	0-0-0
at CC	Nov 15	3-3 t	0-2-2	0-0-0	DNP	DNP	0-0-0	0-0-0	0-0-0	DNP	0-0-0	0-0-0	2-1-3
at HUM	Nov 21	3-3 t	0-0-0	1-0-1	DNP	0-0-0	0-0-0	DNP	0-1-1	DNP	0-1-1	0-0-0	1-0-1
HUM	Nov 22	2-2 t	0-0-0	0-0-0	DNP	0-0-0	0-0-0	DNP	0-0-0	DNP	0-0-0	0-0-0	0-0-0
LU	Nov 29	3-3 t	0-1-1	0-0-0	DNP	0-0-0	0-0-0	DNP	1-1-2	0-0-0	DNP	DNP	0-0-0
MU	Nov 30	1-2 L	0-0-0	0-0-0	DNP	DNP	0-0-0	DNP	0-0-0	0-0-0	0-1-1	0-0-0	0-0-0

Opponent	Date	Score	27 WESTERLUN	30 TJADEN, ISAA	35 JOHNSON, ER
vs BU	Oct 31	2-4 L	DNP	DNP	0-0-0
vs STO	Nov 02	6-3 W	DNP	DNP	0-0-0
UWSP	Nov 07	1-4 L	DNP	DNP	0-0-0
STOUT	Nov 08	4-3 W	DNP	DNP	0-0-0
at CC	Nov 14	2-1 W	DNP	DNP	0-0-0
at CC	Nov 15	3-3 t	DNP	DNP	0-0-0
at HUM	Nov 21	3-3 t	1-0-1	DNP	0-0-0
HUM	Nov 22	2-2 t	0-1-1	DNP	0-0-0
LU	Nov 29	3-3 t	DNP	DNP	0-0-0
MU	Nov 30	1-2 L	DNP	0-0-0	DNP