



GUSTAVUS WOMEN'S HOCKEY NOTES 2014-15

Gustavus Sports Information

800 W College Ave, St. Peter, MN 56082
gustavus.edu/athletics
(507) 933-7647 • sportsinfo@gustavus.edu

Women's Hockey Media Contact
Nick Hoelmer, Graduate Assistant
(507) 933-8411 • nhoelmer@gustavus.edu

Follow Gustavus Athletics Online



2014-15 SCHEDULE

DATE	OPPONENT	TIME/RESULT
NOVEMBER		
4	UW-SUPERIOR	W 3-1
14	CONCORDIA COLLEGE	W 3-1
15	CONCORDIA COLLEGE	W 2-0
21	HAMLIN UNIVERSITY	W 6-3
22	Hamline University	W 4-0
29	Plattsburgh State University	T 4-4 (SL)
30	Middlebury College	L 2-3 (OT)
DECEMBER		
5	St. Olaf College	7:30 p.m.
6	ST. OLAF COLLEGE	2 p.m.
10	UW-River Falls	7:05 p.m.
13	UW-STEVENS POINT	2 p.m.
JANUARY		
9	ADRIAN COLLEGE	5 P.M.
10	LAKE FOREST COLLEGE	2 P.M.
16	AUGSBURG COLLEGE	7 p.m.
17	Augsburg College	2 p.m.
23	SAINT MARY'S UNIVERSITY	7 p.m.
24	Saint Mary's University	2 p.m.
30	COLLEGE OF SAINT BENEDICT	7 p.m.
31	College of Saint Benedict	4:15 p.m.
FEBRUARY		
6	St. Catherine University	7 p.m.
7	ST. CATHERINE UNIVERSITY	2 p.m.
13	University of St. Thomas	7:30 p.m.
14	UNIVERSITY OF ST. THOMAS	2 p.m.
20	BETHEL UNIVERSITY	7 p.m.
21	Bethel University	2 p.m.

HOME GAMES IN BOLD



4 Gustavus Adolphus

Golden Gusties
(5-1-1 Overall, 4-0-0 MIAC)

vs.

St. Olaf

Oles
(0-7-0 Overall, 0-4-0 MIAC)

ST. OLAF



Game 8

Date: Friday, December 5 • **Time:** 7:30 p.m. • **Location:** Northfield, Minn.

Arena: Northfield Ice Arena

Live Stats: <https://portal.stretchinternet.com/stolaf/>

Live Video: <https://portal.stretchinternet.com/stolaf/>

Game 9

Date: Saturday, December 6 • **Time:** 2 p.m. • **Location:** St. Peter, Minn.

Arena: Don Roberts Ice Rink

Live Stats: <https://gustavus.edu/athletics/whky/LIVE/xlive.htm>

Setting The Scene: After making the trek to New York state over Thanksgiving weekend, the Gustavus Adolphus women's hockey team is back in Minnesota and preparing to face a familiar foe in St. Olaf College. The Gusties will take on the Oles in a home-home series on Friday and Saturday, with Friday's game being played at Northfield Ice Arena at 7:30 p.m. and Saturday's being played at Don Roberts Ice Rink at 2 p.m. Gustavus enters the weekend with a record of 4-0-0 in the MIAC and 5-1-1 overall, while St. Olaf sits at 0-4-0 in the MIAC and 0-7-0 overall.

Quick Rewind: Gustavus enters the series after facing its toughest competition of the season this past weekend when it competed in the Cardinal Classic hosted by Plattsburgh State University. The Gusties began their tournament with a battle against the nation's top ranked team in Plattsburgh, and looked to be overwhelmed for much of the game, as the Cardinals led 4-1 with only seven minutes remaining in the game. However, Gustavus remained persistent and in less than five minutes had tied the score at 4-4. The Gusties and Cardinals could not find the back of the net for the remainder of regulation or in overtime, before Plattsburgh earned a 2-1 shootout victory that sent them to Sunday's championship game and the Gusties' to the consolation draw.

Gustavus did not find its competition to be any easier on Sunday. Less than 24 hours after facing the No. 1 ranked team, the No. 4 Gusties faced No. 5 Middlebury College. Unlike its first round game, Gustavus was able to get on the board first. Middlebury would rally with two goals of its own and looked to be headed for a 2-1 victory before the Gusties' Lydia Wagner scored with just :39 seconds remaining in the game to tie the game at 2-2 and send the game to overtime. There, the Panthers wasted no time in securing a victory by scoring just 1:09 into the extra period to take home the 3-2 win.

St. Olaf comes into the series looking for its first win of the season. The Oles most recently played against No. 7 UW-River Falls on Nov. 25 and were defeated by the Falcons 9-0. The Oles' closest game of the season came on Nov. 22 against the University of St. Thomas when they fell just short of a victory over the defending MIAC champions in a 2-1 loss in St. Paul.

Series Snapshot: This weekend's series marks the 35th and 36th meetings between

12 MIAC Championships • 11 NCAA Tournament Appearances

The Match Up

Statistical Comparison

GAC (MIAC)		STO (MIAC)
3.43 (1st)	Goals For	1.29 (8th)
1.71 (2nd)	Goals Against	5.86 (10th)
17.9% (3rd)	Power Play	6.7% (8th)
94.4% (2nd)	Penalty Kill	67.7% (10th)
+4 (2nd)	Special Teams Net	-8 (10th)
5.7 (9th)	Penalty Minutes	12 (10th)

Season averages with MIAC ranks (10 teams)

The Series

Gustavus vs. St. Olaf

All-Time Record	31-1-2
Last Meeting	W 2-0
Current Streak	W4

Previous 10 Matchups:

Date	Location	Result
Dec. 7, 2013	Northfield	W 2-0
Dec. 6, 2013	St. Peter	W 5-2
Feb. 16, 2013	St. Peter	W 6-2
Feb. 15, 2013	Northfield	W 7-4
Feb. 18, 2012	Northfield	L 2-5
Feb. 17, 2012	St. Peter	W 5-0
Nov. 13, 2010	Northfield	W 6-0
Nov. 12, 2010	St. Peter	W 2-1
Dec. 12, 2009	Northfield	W 3-1
Dec. 11, 2009	St. Peter	L 2-3

Gustavus and St. Olaf in women's hockey. The Gusties have owned the series thus far with a record of 31-1-2. The only loss in the all-time series for the Gusties came in the 2011-12 season when they were defeated by the Oles by a final score of 5-2 in Northfield.

Last Time They Met: When these two teams met a year ago, Gustavus swept the regular season series with wins of 5-2 and 2-0. In those two games, Gustavus scored five of its seven series goals in the third period to secure victories.

About The Oles: St. Olaf enters the weekend being the only team in the MIAC to not have recorded a point in conference play. Some of St. Olaf's struggles this season are likely due to losing six of its seven top scorers from 2013-14 due to graduation. Senior forward Devyn Hotho was the Oles' sixth leading scorer last season with seven total points, and this season is tied for the MIAC lead in goals scored with five. Between the pipes, sophomore Cassie Alexander has logged the most minutes so far, tallying 211 minutes out of a possible 420. She has racked up 122 saves to go with a .872 save percentage and allowed 18 goals for a 5.12 goals against average.

Draayer Named MIAC Women's Hockey Athlete-Of-The-Week: After scoring two goals, including the game-winner in a tie against No. 1 Plattsburgh, the MIAC sports information directors honored senior Carolyn Draayer with the MIAC Women's Hockey Athlete-of-the-Week award. Draayer played her best game of the year against the nation's top team in Plattsburgh to help the Gusties earn the 4-4 overtime tie with the Cardinals. Draayer scored at the 10:33 mark of the second period to cut a 2-0 lead in half, then lit the lamp again with just 2:08 to play to complete a three-goal comeback and send the game to overtime and the eventual tie. This season, Draayer has four goals and two assists for a total of six points. She is tied for third in the MIAC in goals and tied for 11th in points.

Behaving Themselves: Through seven games, the Gusties rank 9th of 10 teams in the MIAC for least amount of time spent in the penalty box, averaging only 5.7 minutes per game. Only the University of St. Thomas is lower with 4.7. St. Olaf meanwhile, leads the MIAC with 12 penalty minutes per game.

Strong Defenders: Gustavus currently has three defenders tied for fourth place in the MIAC in defender scoring. Courtney Boucher, Rachel Skoglund and Lydia Wagner have each tallied three points through the Gusties' first seven games.

Gustavus Embarks On 18th Season Of Women's Hockey: The Gustavus women's hockey team is currently in its 18th season. Founded in 1997, the Gusties have attained an all-time record of 372-98-27, which stands as the second winningest program in all of NCAA Division III women's hockey. The Gustie women have won 12 MIAC titles in the 16 years of women's hockey in the conference. Those 12 titles rank first in front of St. Thomas (3) and Augsburg and Saint Mary's, who each have two. Gustavus has also earned the MIAC Playoff crown a total of 11 times, 10 of which have come in the past 11 years and led to 11 NCAA Tournament appearances.

Wearing The "C": In the 17-year history of the Gustavus women's hockey program, 33 players have earned the honor of being a captain. This year, that number stays the same as two of the 2013-14 captains, Carolyn Draayer and Courtney Boucher, will move into their senior years and accept the same role during their 2014-15 campaign.

Home Grown Talent: Of the 24 players on this year's roster, 22 are natives of Minnesota. The only players who reside outside the State of Hockey are Courtney Bethune, who hails from Fort Frances, Ontario, and Allie Lewis, who is a native of Kearney, Nebraska.

Veteran Squad: Despite losing three of its top five scorers from its 2013-14 squad, Gustavus will return 63 percent of its scoring from last season. Sixteen of the Gusties' 24 players are returners, compared to just eight first-year players. Gustavus will also welcome back three of its four 2013-14 All-MIAC honorees, which include Courtney Boucher, Carolyn Draayer and Allison Eder-Zdechlik.

Gusties In The Polls: Gustavus is ranked fourth for the second straight week in the most recent USCHO.com Division III Women's Hockey Poll, which was released Monday. This week marks the 82nd consecutive time that the Gusties have been ranked in the USCHO.com poll.



Gustavus Quick Facts

Location: St. Peter, Minnesota
Address: 800 West College Ave.
 St. Peter, MN 56082
Founded: 1862
Enrollment: 2,455
Nickname: Golden Gusties
School Colors: Black and Gold
Home Ice: Don Roberts Ice Rink
NCAA Affiliation: NCAA Division III
Conference: Minnesota Intercollegiate Athletic
President: Rebecca M. Bergman
Athletic Director: Tom Brown
Assistant Athletic Director: Jared Phillips
Athletic Trainer: Troy Banse
Equipment Manager: Jed Friedrich
Sports Information Director: Ethan Armstrong

Gustavus Hockey Quick Facts

2013-14 Record: 17-8-2
2013-14 MIAC Record/Finish: 14-4-0/2nd
All-Time Record: 372-98-27
All-Time MIAC Record: 246-27-12
MIAC Championships: 12
Returns/First-years: 16/8
All-MIAC Honorees Returning/Lost: 3/1

Gustavus Under Head Coach Mike Carroll

Year	Overall	MIAC	Conference Finish
1999-00	18-10-1	12-5-1	3rd
2000-01	23-6-1	16-2-0	1st
2001-02	23-5-2	18-0-1	1st
2002-03	14-9-4	11-4-3	3rd
2003-04	22-6-0	16-2-0	2nd
2004-05	25-4-1	17-1-0	1st
2005-06	22-5-2	17-0-1	1st
2006-07	25-3-0	17-1-0	1st
2007-08	25-3-0	18-0-0	1st
2008-09	22-2-4	16-0-2	1st
2009-10	26-6-2	14-3-1	1st
2010-11	22-5-3	14-2-2	1st
2011-12	24-4-2	16-1-1	1st
2012-13	27-2-1	18-0-0	1st
2013-14	17-8-2	14-4-0	2nd
2014-15	5-0-0	4-0-0	
Totals	336-79-26	238-25-12	11 MIAC Titles

Around The League

MIAC Standings

School	Points	MIAC	Overall
Gustavus	8	4-0-0	5-1-1
St. Thomas	7	3-0-1	4-1-1
Augsburg	7	3-0-1	3-3-2
Saint Mary's	5	2-1-1	2-4-1
Saint Benedict	4	2-2-0	3-5-0
Bethel	3	1-2-1	4-3-1
St. Catherine	3	1-2-1	2-3-1
Concordia	2	1-3-0	1-5-0
Hamline	1	0-3-1	0-4-1
St. Olaf	0	0-4-0	0-7-0

This Weekend in the MIAC

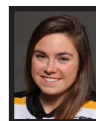
Friday, December 5

St. Thomas @ Concordia | 7 p.m.
 Saint Benedict @ Augsburg | 7 p.m.
 Bethel @ Hamline | 7 p.m.
 Saint Mary's @ St. Catherine | 7 p.m.

Saturday, December 6

St. Thomas @ Concordia | 2 p.m.
 Hamline @ Bethel | 2 p.m.
 St. Catherine @ Saint Mary's | 2 p.m.
 Augsburg @ Saint Benedict | 6:30 p.m.

MIAC Athlete-of-the-Week



Carolyn Draayer

Sr., Forward
 Deephaven, Minn./Minnetonka

Opponent	G	A	P
@ Plattsburgh State	2	0	2
Middlebury College	0	0	0

USCHO.com Div. III Poll

Rank	School	Overall	Points	Last
1	Plattsburgh (13)	8-0-2	148	1
2	Elmira (2)	7-1-0	134	2
3	Norwich	6-1-1	110	3
4	Gustavus Adolphus	5-1-1	103	4
5	Middlebury	4-2-0	99	5
6	UW-Stevens Point	7-2-0	72	6
7	UW-River Falls	6-2-0	61	7
8	UW-Superior	7-2-0	40	8
9	St. Thomas	4-1-1	30	9
10	Adrian	5-0-1	17	10



Gustavus Record When...

At home	4-0-0
On the road	1-0-1
Neutral Site	0-1-0
vs. MIAC opponents	4-0-0
vs. Non-conference opponents	1-1-1
vs. Top 10 opponents	1-1-1
GAC scores 4 or more goals	2-0-1
GAC scores 3 goals	2-0-0
GAC scores 2 or fewer goals	1-1-0
GAC scores first	5-1-0
Opponent scores first	0-0-1
GAC leads after 1st period	2-1-0
Opponent leads after 1st period	0-0-0
Tied after 1st period	3-0-0
GAC leads after 2nd period	3-0-0
Opponent leads after 2nd period	0-0-1
Tied after 2nd period	2-1-0
In overtime	0-1-1
Games decided by one goal	0-1-0
Games decided by two goals	3-0-0
Games decided by three goals	1-0-0
Games decided by four or more	1-0-0
GAC scores on the power play	3-0-0
GAC scoreless on the power play	2-1-1
GAC scores two or more PP goals	2-0-0
GAC outshoots opponent	5-1-0
GAC outshot by opponent	0-0-1
Shots equal	0-0-0
Tuesday Games	1-0-0
Friday Games	2-0-0
Saturday Games	2-0-1
Sunday Games	0-1-0
In November	5-1-1
In December	0-0-0
In January	0-0-0
In February	0-0-0
In March	0-0-0
Following a win	4-0-1
Following a loss	0-0-0
Following a tie	0-1-0
Night games	4-0-1
Day games	1-1-0

Who's Hot

Scoring in Cardinal Classic

Player	Games	Goals	Assists	Points	Point Streak
Carolyn Draayer	2	2	0	2	--
Courtney Boucher	2	0	2	2	2
Lydia Wagner	2	1	1	2	2

Goaltending in Cardinal Classic

Player	Record	Minutes	GA	Saves	Scoreless Str.
Lindsey Hibbard	0-1-1	125:53	6	63	--

Career Scoring vs. St. Olaf

Player	Games	Goals	Assists	Points
Courtney Boucher	6	1	3	4
Marissa Brandt	6	1	2	3
Carolyn Draayer	6	4	1	5
Leah Johnson	5	0	1	1
Keri Pickel	4	0	0	0
Allison Eder-Zdechlik	4	4	2	6
Emily Reibert	4	0	0	0
Courtney Bethune	2	0	1	1
Emily Gustafson	1	1	0	1
Hannah Heacox	2	0	0	0
Callie Johnson	1	0	1	1
Allie Lewis	2	0	0	0
Courtney Potter	1	0	0	0
Lydia Wagner	2	0	0	0

Career Goaltending vs. St. Olaf

Player	GP	Record	Minutes	GA	Saves
Lindsey Hibbard	2	2-0-0	120:00	4	58

2014-15 Season By The Numbers

Largest Victory	4 vs. Hamline (11/22/14)
Largest Defeat	1 vs. Middlebury (11/30/14)
Largest First Period Lead	2 vs. Hamline (11/21/14)
Largest First Period Deficit	1 vs. Plattsburgh (11/29/14)
Largest Second Period Lead	3 vs. Hamline (11/22/14)
Largest Second Period Deficit	2 vs. Plattsburgh (11/29/14)
Most Goals Scored	6 vs. Hamline (11/21/14)
Fewest Goals Scored	2 (2x) Last: vs. Middlebury (11/30/14)
Most Goals Allowed	4 vs. Plattsburgh (11/29/14)
Fewest Goals Allowed	0 (2x) Last: vs. Hamline (11/21/14)
Largest Lead	4 vs. Hamline (11/22/14)
Largest Lead On Road	4 vs. Hamline (11/22/14)
Largest Lead At Home	3 (2x) last: vs. Hamline (11/21/14)
Largest Blown Lead	1 vs. Middlebury (11/30/14)
Largest Deficit	3 vs. Plattsburgh (11/29/14)
Largest Deficit On Road	3 vs. Plattsburgh (11/29/14)
Largest Deficit At Home	--
Largest Comeback-Win/Tie	3 vs. Plattsburgh=Tie (11/29/14)



Last Time It Happened

COMEBACKS

GAC won when trailing after two periods

March 1, 2014 vs. Bethel. Trailing 2-1 early in the third, Gustavus scored consecutive goals to capture a 3-2 victory.

Opponent won when trailing after two periods

Feb. 1, 2014 vs. Saint Benedict. Blazers trailed 2-1 after two periods, but scored three in the third to capture a 4-2 win.

Overcame 1-goal deficit and won

GAC: March 1, 2014 vs. Bethel. Trailing 2-1 early in the third, Gustavus scored consecutive goals to capture a 3-2 victory.

OPP: Nov. 30 2014 vs. Middlebury. Trailing 1-0 in first period, won 3-2

Overcame 2-goal deficit and won

GAC: Feb. 29, 2013 vs. Bethel. Gusties trailed 2-0 after two, but came back with three goals in the third for a 3-2 win.

OPP: Feb. 1, 2014 vs. Saint Benedict. Blazers trailed 2-0 in second period, but scored four unanswered goals to capture a 4-2 win.

Overcame a 3-goal deficit and won

GAC: March 1, 1998 vs. University of Minnesota Club. Gusties scored one in the second and three in the third to win 4-3.

OPP: Never

OVERTIME GAMES

Won overtime game

GAC: March 1, 2012 vs Bethel. Courtney Boucher scored 6:25 in to overtime to win 1-0 and advance to the MIAC Championship.

OPP: Nov. 30, 2014 vs. Middlebury

Tied overtime game

Nov. 29, 2014 at Plattsburgh (4-4)

SERIES SWEEPS

Swept a 2-game regular season home and away series

GAC: Nov. 21-22, 2014 vs. Hamline. (6-3 Friday in St. Peter, 4-0 Saturday in St. Paul)

OPP: Jan. 31-Feb. 1, 2014 vs. Saint Benedict. (4-2 Friday night in St. Peter, 4-2 again on Saturday in St. Cloud)

Swept a 2-game regular season home series

GAC: Nov. 14-15, 2014 vs. Concordia. (3-1, 2-0)

OPP: Never

Swept a 2-game regular season away series

GAC: Nov. 15-16, 2013 at Concordia. (4-1, 2-0)

OPP: Never. (MIAC Playoffs: March 10-11, 2000 at Augsburg. (4-1, 2-1)

SHUTOUTS

Last Shutout

GAC: Nov. 22, 2014 vs. Hamline 4-0

OPP: Mar. 8, 2014 vs. St. Thomas 2-0

Last Home Shutout

GAC: Nov. 15, 2014 vs. Concordia 2-0

OPP: Feb. 22, 2014 vs. Bethel 1-0.

Last Road Shutout

GAC: Nov. 22, 2014 at Hamline 4-0.

OPP: Mar. 8, 2014 vs. St. Thomas 2-0

Scoreless Ties (2 in program history)

Jan. 14, 2010 vs. Trinity (Conn.)

Feb. 17, 2009 at UW-Stevens Point

EXTRA ATTACKER GOALS

GAC: Nov. 30, 2014 vs. Middlebury. Lydia Wagner scored w/ 39 sec. left

OPP: Jan. 9, 2005 at UW-River Falls. Gusties won 6-4.

SHORTHANDED GOALS

Scored a shorthanded goal

GAC: March 1, 2014 vs. Bethel. Carolyn Draayer scored shorthanded to tie the game in the third period of a 3-2 win for Gustavus.

OPP: Jan. 10, 2014 at UW-Stevens Point. Cassandra Salmen scored shorthanded in the third period of a 5-2 win for the Pointers.

Scored two shorthanded goals

GAC: Nov. 22, 2008 at St. Olaf. Melissa Mackley scored two short-handed goals in the third period. Gusties won 4-2.

OPP: Never

EMPTY NET GOALS

GAC: Dec. 6, 2013 vs. St. Olaf. Melissa Doyle scored EN at 19:47 of a 5-2 win for the Gusties in St. Peter.

OPP: Feb. 15, 2014 vs. St. Thomas. Karina Marette scored EN at 19:47 of a 3-1 Tommie win in Mendota Heights.

TEAM GOALS IN A PERIOD

Team scored 5 or more goals in a period

GAC: Feb. 23, 2013 vs. Saint Benedict. The Gusties scored six goals in the second period on their way to an 8-2 victory in St. Peter.

OPP: Dec. 3, 1998 at the University of Minnesota (Mariucci Arena.

Gophers scored five goals in the first period and won 8-1.

PENALTY SHOTS

Scored on a penalty shot

GAC: Never.

OPP: March 19, 2011 vs. Middlebury (NCAA 3rd Place Game,

Rochester, N.Y.). Penalty shot goal scored after Lindsey Hjelm checking penalty in the second period. Middlebury won 5-0.

PENALTIES

Not penalized

GAC: Dec. 1, 2012 at Augsburg. GAC won 3-1.

OPP: Dec. 2, 2000 at St. Catherine. St. Kate's won 4-3.

Neither team was penalized

Jan. 30, 1998 at Saint Mary's. Gusties won 6-2.

HAT TRICKS

Last individual 3-goal game

GAC: Jan. 26, 2013 vs. Concordia. Lindsey Hjelm scored three goals (all even) in a 5-1 Gustavus win in St. Peter.

OPP: Jan. 10, 2014 at UW-Stevens Point. Cassandra Salmen scored three goals in the third period of a 5-2 Pointer win.

Last individual 4-goal game

GAC: Dec. 2, 2011 at Augsburg. Allie Schwab scored three PP goals and an even goal in a 9-0 shutout.

OPP: Never.

All goals scored by one player (3+ Goals)

GAC: Never.

OPP: Dec. 2, 2006 at Hamline. Melanie Levielle scored all three goals in a 4-3 loss.

SHOTS ON GOAL

Fewer than 15 shots in a game

GAC: Dec. 3, 1998 at the University of Minnesota, 11 shots. Minnesota won 8-1.

OPP: Nov. 21, 2014 vs. Hamline, 11 shots. Gustavus won 6-3.

Fewer than 20 shots in a game

GAC: Feb. 14, 2014 vs. St. Thomas, 17 shots. Gustavus won 5-1.

OPP: Nov. 22, 2014 vs. Hamline, 19 shots. Gustavus won 4-0.

40 or more shots in a game

GAC: Nov 22, 2014 vs. Hamline, 47 shots. Gustavus won 4-0.

OPP: Nov. 29, 2014 at Plattsburgh, 42 shots. Tied 4-4.

50 or more shots in a game

GAC: Feb. 16, 2013 vs. St. Olaf, 51 shots. Gustavus won 6-2.

OPP: Nov. 23, 1998 vs. the University of Minnesota: 51 shots. Minnesota won 6-0.

60 or more shots in a game

GAC: Feb. 15, 2013 at St. Olaf, 61 shots. Gustavus won 7-4.

OPP: Feb. 5, 1998 at Boston College, 65 shots. BC won 10-1.

SINGLE GAME POINTS

Player had four points in a game

GAC: Jan. 17, 2014 at Augsburg. Courtney Boucher had four assists in a 5-2 win for Gustavus.

OPP: Mar. 18, 2011 vs. Norwich (NCAA Semifinals). Julie Fortier scored three goals with an assist in a 5-4 Norwich victory.

Player had five points in a game

GAC: Dec. 2, 2011 at Augsburg. Allie Schwab scored three PP goals and an even goal with an assist in a 9-0 shutout.

OPP: Mar. 18, 2005 vs. Middlebury. (NCAA Semifinals) Lorna Grifis scored two goals with three assists in a 7-3 Middlebury win.

Player had six or more points in a game

GAC: Feb. 11, 2005 at St. Catherine. Andrea Peterson scored two goals with six assists in a 13-0 win. (Most individual points in a game in program history)

OPP: Jan. 30, 1999 at Middlebury. Michelle Labbe scored three goals with three assists in a 8-0 Middlebury win.





Carroll At A Glance

Hometown

• Edina, Minnesota

Education

• Bachelor's Degree: Recreation, Parks, and Leisure Services (Minn. State, Mankato '82)

Family

• Wife: Terri
• Children: Matt and Mike

Coaching

- 1983-84 – Assistant Coach, University of St. Thomas
- 1984-85 – Assistant Coach, Fergus Falls High School
- 1986-87 – Head Coach, Fergus Falls Community College
- 1990-99 – Head Coach, Mankato West High School
- 1999-Present – Head Coach, Gustavus Adolphus College

Years At Gustavus: 15

All-time Record: 336-79-26

All-time MIAC Record: 238-25-12

MIAC Titles: 11

MIAC Playoff Titles: 11

NCAA Tournaments: 11

NCAA Tournament Record: 8-16-0

Final Fours: 7

Most Wins In A Season: 27 (2012-13)

Fewest Wins In A Season: 14 (2002-03)

***All-time winningest coach in Gustavus women's hockey history.

Head Coach Mike Carroll

Mike Carroll is in his 16th season as the women's head hockey coach at Gustavus. Within his tenure behind the Gustie bench, Carroll has turned Gustavus women's hockey into one of the most successful programs in NCAA Division III. He has compiled an overall record of 336-79-26 in 15 seasons and has the most coaching victories in the history of the program.

Last season, the Gustavus women's hockey team saw its reign atop the Minnesota Intercollegiate Athletic Conference (MIAC) come to an end. The Gusties finished second in the final conference standings with 28 points at 14-4-0, ending their streak of consecutive MIAC Championships at nine. After defeating Bethel 3-2 in the MIAC Playoff Semifinals, Gustavus's season concluded with a 2-0 loss to regular season champion St. Thomas in the MIAC Playoff Championship. The postseason defeat suffered to the Tommies ended Head Coach Mike Carroll's run of 10 consecutive MIAC Playoff titles and trips to the NCAA Tournament. The Gusties finished the year with an overall record of 17-8-2.

Carroll has directed the Gusties to 11 MIAC regular season titles (2000-01, 2001-02, 2004-05, 2005-06, 2006-07, 2007-08, 2008-09, 2009-10, 2010-11, 2011-12, 2012-13) and has been named the MIAC Coach-of-the-Year six times (2001-02, 2003-04, 2004-05, 2005-06, 2010-11, 2012-13). In addition to coaching 34 players who have earned All-Conference honors 59 times, he has coached five MIAC Players-of-the-Year in Sarah Garrison, Andrea Peterson, Stefanie Ubl, Allie Schwab, Lindsey Hjelm. Carroll has also worked with 13 players who have earned AHCA All-America distinction 21 times and two American Hockey Coaches Association Players-of-the-Year, including four-time MIAC Player-of-the-Year and four-time All-American Andrea Peterson.

Prior to coming to Gustavus, Carroll served as the head boys' hockey coach at Mankato West High School from 1991 to 1999. Carroll's college coaching resume included a stint as head men's hockey coach at Fergus Falls Community College from 1986 to 1987 as well as a season as the assistant men's coach at the University of St. Thomas in 1983.

Carroll, an Edina, Minnesota native, competed in hockey and baseball at Mankato State. After graduating with a degree in municipal recreation in 1982, Carroll played professional baseball in the Montreal Expos organization for two years.

In addition to his hockey coaching duties at Gustavus, Carroll is also the head coach of the Golden Gustie baseball team. Mike and his wife, Terri, live in Mankato and have two sons, Matt and Mike.

2014-15 Roster Breakdown

Returners (16)

Courtney Bethune
 Courtney Boucher
 Marissa Brandt
 Carolyn Draayer
 Allison Eder-Zdechlik
 Emily Gustafson
 Hannah Heacox
 Lindsey Hibbard
 Callie Johnson
 Leah Johnson
 Amanda Koep
 Allie Lewis
 Keri Pickel
 Courtney Potter
 Emily Reibert
 Lydia Wagner

Newcomers (8)

Katie Aney
 Diana Draayer
 Katy Fuller
 Laura Johnson
 Kaitlyn Klein
 Erica Power
 Ashley Ritten
 Rachel Skoglund

By Class

Seniors (5)

Courtney Boucher
 Marissa Brandt
 Carolyn Draayer
 Leah Johnson
 Keri Pickel

Juniors (4)

Allison Eder-Zdechlik
 Lindsey Hibbard
 Amanda Koep
 Emily Reibert

Sophomores (7)

Courtney Bethune
 Emily Gustafson
 Hannah Heacox
 Callie Johnson
 Allie Lewis
 Courtney Potter
 Lydia Wagner

First-Years (8)

Katie Aney
 Diana Draayer
 Katy Fuller
 Laura Johnson
 Kaitlyn Klein
 Erica Power
 Ashley Ritten
 Rachel Skoglund

2014-15 Numerical Roster

No.	Name	Yr.	Pos.	Hgt.	Hometown/High School
1	Lindsey Hibbard	Jr.	G	5-6	Princeton, Minn./Princeton
2	Courtney Bethune	So.	D	5-8	Fort Frances, Ont./Warroad
3	Emily Reibert	Jr.	F	5-5	Inver Grove Heights, Minn./South St. Paul
4	Diana Draayer	Fy.	F	5-5	Deephaven, Minn./Minnetonka
5	Rachel Skoglund	Fy.	D	5-2	Forest Lake, Minn./Forest Lake
6	Emily Gustafson	So.	F	5-1	Esko, Minn./Esko
7	Lydia Wagner	So.	D	5-7	Zumbrota, Minn./Zumbrota-Mazeppa
8	Allison Eder-Zdechlik	Jr.	F	5-4	Stillwater, Minn./Stillwater
9	Erica Power	Fy.	F	5-6	Lakeville, Minn./Apple Valley
10	Courtney Boucher	Sr.	F/D	5-7	Hastings, Minn./Hastings
11	Keri Pickel	Sr.	F	5-2	Rochester, Minn./Mayo
12	Hannah Heacox	So.	F	5-3	Stillwater, Minn./Stillwater
13	Katie Aney	Fy.	F	5-8	Rochester, Minn./Century
14	Katy Fuller	Fy.	F	5-5	Minneapolis, Minn./Southwest
15	Leah Johnson	Sr.	F	5-4	Chanhassen, Minn./Chaska
17	Callie Johnson	So.	F	5-7	Detroit Lakes, Minn./Detroit Lakes
18	Carolyn Draayer	Sr.	F	5-6	Deephaven, Minn./Minnetonka
19	Allie Lewis	So.	F	5-3	Kearney, Neb./Shattuck-St. Mary's
20	Kaitlyn Klein	Fy.	F	5-6	Plymouth, Minn./Wayzata
22	Marissa Brandt	Sr.	F/D	5-6	Vadnais Heights, Minn./Hill-Murray
23	Laura Johnson	Fy.	D	5-5	Chanhassen, Minn./Chanhassen
24	Courtney Potter	So.	D	5-2	Dayton, Minn./Champlin Park
33	Ashley Ritten	Fy.	G	5-6	Robbinsdale, Minn./Robbinsdale Armstrong
35	Amanda Koep	Jr.	G	5-5	St. Michael, Minn./St. Michael-Albertville

Head Coach: Mike Carroll (16th season)
 Assistant Coaches: Amanda Trunzo, Steve Carroll

Alphabetical Roster/Pronunciation Guide

NO.	NAME	Pronunciation
13	Aney, Katie	
2	Bethune, Courtney	beth-OON
10	Boucher, Courtney	BOO-shay
22	Brandt, Marissa	
18	Draayer, Carolyn	DRAY-er
4	Draayer, Diana	DRAY-er
8	Eder-Zdechlik, Allison	ee-der-ZED-lick
14	Fuller, Katy	
6	Gustafson, Emily	GUST-uhf-son
12	Heacox, Hannah	HEE-cox
1	Hibbard, Lindsey	
23	Johnson, Laura	
15	Johnson, Leah	
17	Johnson, Callie	
20	Klein, Kaitlyn	
35	Koep, Amanda	COPE
19	Lewis, Allie	
11	Pickel, Keri	
9	Power, Erica	
24	Potter, Courtney	
3	Reibert, Emily	RYE-ber
33	Ritten, Ashley	
5	Skoglund, Rachel	SKOHG-lund
7	Wagner, Lydia	

Player Profiles



#1 Lindsey Hibbard
Jr., Goaltender
Princeton, Minn./Princeton

Season Numbers

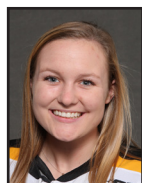
GP	GAA	Save Pct.	Record
7	1.40	.945	4-1-1



#2 Courtney Bethune
So., Defender
Fort Frances, Ont./Warroad

Season Numbers

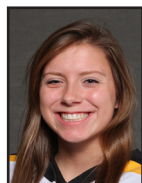
GP	Goals	Assists	Points
7	0	0	0



#3 Emily Reibert
Jr., Forward
Inver Grove Heights, Minn./South St. Paul

Season Numbers

GP	Goals	Assists	Points
6	3	1	4



#4 Diana Draayer
Fy., Forward
Deephaven, Minn./Minnetonka

Season Numbers

GP	Goals	Assists	Points
7	1	4	5



#5 Rachel Skoglund
Fy., Defender
Forest Lake, Minn./Forest Lake

Season Numbers

GP	Goals	Assists	Points
7	1	2	3



#6 Emily Gustafson
So., Forward
Esko, Minn./Esko

Season Numbers

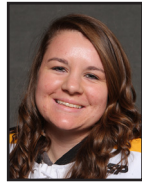
GP	Goals	Assists	Points
7	0	1	1



#7 Lydia Wagner
So., Defender
Zumbrota, Minn./Zumbrota-Mazeppa

Season Numbers

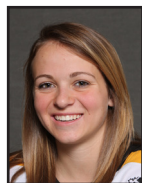
GP	Goals	Assists	Points
7	2	1	3



#8 Allison Eder-Zdechlik
Jr., Forward
Stillwater, Minn./Stillwater

Season Numbers

GP	Goals	Assists	Points
5	2	1	3



#9 Erica Power
Fy., Forward
Lakeville, Minn./Apple Valley

Season Numbers

GP	Goals	Assists	Points
7	3	6	9

Player Profiles



#10 Courtney Boucher
Sr., Forward/Defender
Hastings, Minn./Hastings

Season Numbers

GP	Goals	Assists	Points
7	0	3	3



#11 Keri Pickel
Sr., Forward
Rochester, Minn./Mayo

Season Numbers

GP	Goals	Assists	Points
7	0	1	1



#12 Hannah Heacox
So., Forward
Stillwater, Minn./Stillwater

Season Numbers

GP	Goals	Assists	Points
1	0	0	0



#13 Katie Aney
Fy., Forward
Rochester, Minn./Century

Season Numbers

GP	Goals	Assists	Points
7	2	0	2



#14 Katy Fuller
Fy., Forward
Minneapolis, Minn./Southwest

Season Numbers

GP	Goals	Assists	Points
7	2	2	4



#15 Leah Johnson
Sr., Forward
Chanhassen, Minn./Chanhassen

Season Numbers

GP	Goals	Assists	Points
7	0	1	1



#17 Callie Johnson
So., Forward
Detroit Lakes, Minn./Detroit Lakes

Season Numbers

GP	Goals	Assists	Points
2	0	1	1



#18 Carolyn Draayer
Sr., Forward
Deephaven, Minn./Minnetonka

Season Numbers

GP	Goals	Assists	Points
7	4	2	6



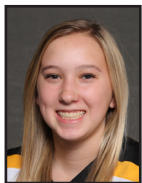
#19 Allie Lewis
So., Forward
Kearney, Neb./Shattuck-St. Mary's

Season Numbers

GP	Goals	Assists	Points
7	0	0	0



Player Profiles



#20 Kaitlyn Klein
 Fy., Forward
 Plymouth, Minn./Wayzata

Season Numbers

GP	Goals	Assists	Points
7	3	1	4



#22 Marissa Brandt
 Sr., Forward/Defender
 Vadnais Heights, Minn./Hill-Murray

Season Numbers

GP	Goals	Assists	Points
7	1	1	2



#23 Laura Johnson
 Fy., Defender
 Chanhassen, Minn./Chanhassen

Season Numbers

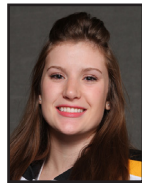
GP	Goals	Assists	Points
4	0	0	0



#24 Courtney Potter
 So., Defender
 Dayton, Minn./Champlin Park

Season Numbers

GP	Goals	Assists	Points
3	0	0	0



#33 Ashley Ritten
 Fy., Goaltender
 Robbinsdale, Minn./Robbinsdale Armstrong

Season Numbers

GP	GAA	Save Pct.	Record
0	---	---	0-0-0



#35 Amanda Koep
 Jr., Goaltender
 St. Michael, Minn./St. Michael-Albertville

Season Numbers

GP	GAA	Save Pct.	Record
1	4.41	.571	1-0-0

Gustavus Adolphus Hockey
Gustavus Adolphus Overall Team Statistics (as of Dec 04, 2014)
All games

Overall: 5-1-1 Conf: 4-0-0 Home: 4-0-0 Away: 1-0-1 Neut: 0-1-0

TEAM STATISTICS	GAC	OPP
SHOT STATISTICS		
Goals-Shot attempts	24-265	12-171
Shot pct.	.091	.070
Goals/Game	3.4	1.7
Shots/Game	37.9	24.4
Assists	28	17
POWER PLAYS		
Goals-Power Plays	5-27	1-16
Conversion Percent	.185	.062
Shot Attempts	71	20
Shot Percent	.070	.050
SHORT-HANDED		
Goals-Shot attempts	0-8	0-10
Shot Percent	.000	.000
GOAL BREAKDOWN		
Total Goals	24	12
Power Play	5	1
Short-handed	0	0
Empty net	0	0
Penalty	0	0
Unassisted	5	1
Overtime	0	1
Shootout	0	0
Delayed Penalty	0	0
PENALTIES		
Number	20	30
Minutes	40	60
Penalties/Game	2.9	4.3
Pen minutes/Game	5.7	8.6
Minor	20	30
Major	0	0
10-minute Misconduct	0	0
Game Misconduct	0	0
Gross Misconduct	0	0
Match	0	0
FACEOFFS (W-L)	242-160	160-242
Faceoff W-L Pct.	.602	.398
SHOOTOUTS (Made-Att)	1-4	2-4
ATTENDANCE		
Total	450	545
Dates/Avg Per Date	4/112	2/272
Neutral Site #/Avg	1/120	

Goals by Period	1st	2nd	3rd	OT	Total
Gustavus Adolphus	4	8	12	0	24
Opponents	1	6	4	1	12

Shots by Period	1st	2nd	3rd	OT	Total
Gustavus Adolphus	89	90	86	0	265
Opponents	46	68	53	4	171

Saves by Period	1st	2nd	3rd	OT	Total
Gustavus Adolphus	45	62	49	3	159
Opponents	85	82	73	0	240

Gustavus Adolphus Hockey
Gustavus Adolphus Category Leaders (as of Dec 04, 2014)
All games

## Points	GP	G	A	Pts	Sh
9 Erica Power	7	3	6	9	30
18 Carolyn Draayer	7	4	2	6	36
4 Diana Draayer	7	1	4	5	19
20 Kaitlyn Klein	7	3	1	4	13
3 Emily Reibert	6	3	1	4	10
14 Katy Fuller	7	2	2	4	13
8 A. Eder-Zdechlik	5	2	1	3	23
7 Lydia Wagner	7	2	1	3	12
5 Rachel Skoglund	7	1	2	3	12
10 Courtney Boucher	7	0	3	3	24

## Goals	GP	G	A	Pts	Sh
18 Carolyn Draayer	7	4	2	6	36
9 Erica Power	7	3	6	9	30
20 Kaitlyn Klein	7	3	1	4	13
3 Emily Reibert	6	3	1	4	10
14 Katy Fuller	7	2	2	4	13
8 A. Eder-Zdechlik	5	2	1	3	23
7 Lydia Wagner	7	2	1	3	12
13 Katie Aney	7	2	0	2	18
4 Diana Draayer	7	1	4	5	19
5 Rachel Skoglund	7	1	2	3	12

## Power-Play Goals	GP	PPG
18 Carolyn Draayer	7	2

## Short-Handed Goals	GP	SHG

## Game-Winning Goals	GP	GWG
18 Carolyn Draayer	7	1
9 Erica Power	7	1
20 Kaitlyn Klein	7	1
13 Katie Aney	7	1
14 Katy Fuller	7	1

## Plus/Minus	GP	+/-
5 Rachel Skoglund	7	+7
2 Courtney Bethune	7	+6
20 Kaitlyn Klein	7	+6
9 Erica Power	7	+5
8 A. Eder-Zdechlik	5	+5
10 Courtney Boucher	7	+3
4 Diana Draayer	7	+3
18 Carolyn Draayer	7	+2
14 Katy Fuller	7	+2
3 Emily Reibert	6	+2

## Assists	GP	G	A	Pts	Sh
9 Erica Power	7	3	6	9	30
4 Diana Draayer	7	1	4	5	19
10 Courtney Boucher	7	0	3	3	24
18 Carolyn Draayer	7	4	2	6	36
14 Katy Fuller	7	2	2	4	13
5 Rachel Skoglund	7	1	2	3	12
20 Kaitlyn Klein	7	3	1	4	13
3 Emily Reibert	6	3	1	4	10
8 A. Eder-Zdechlik	5	2	1	3	23
7 Lydia Wagner	7	2	1	3	12

## Shots	GP	G	A	Pts	Sh	Sh%
18 Carolyn Draayer	7	4	2	6	36	.111
9 Erica Power	7	3	6	9	30	.100
10 Courtney Boucher	7	0	3	3	24	.000
8 A. Eder-Zdechlik	5	2	1	3	23	.087
4 Diana Draayer	7	1	4	5	19	.053
13 Katie Aney	7	2	0	2	18	.111
14 Katy Fuller	7	2	2	4	13	.154
20 Kaitlyn Klein	7	3	1	4	13	.231
5 Rachel Skoglund	7	1	2	3	12	.083
7 Lydia Wagner	7	2	1	3	12	.167

## Shot Pct.	GP	G	A	Pts	Sh	Sh%
3 Emily Reibert	6	3	1	4	10	.300
20 Kaitlyn Klein	7	3	1	4	13	.231
7 Lydia Wagner	7	2	1	3	12	.167
14 Katy Fuller	7	2	2	4	13	.154
22 Marissa Brandt	7	1	1	2	8	.125
13 Katie Aney	7	2	0	2	18	.111
18 Carolyn Draayer	7	4	2	6	36	.111
9 Erica Power	7	3	6	9	30	.100
8 A. Eder-Zdechlik	5	2	1	3	23	.087
5 Rachel Skoglund	7	1	2	3	12	.083

## Penalties	GP	Pen	Min
10 Courtney Boucher	7	3	6
18 Carolyn Draayer	7	2	4
7 Lydia Wagner	7	2	4
5 Rachel Skoglund	7	2	4
6 Emily Gustafson	7	2	4
2 Courtney Bethune	7	2	4
23 Laura Johnson	4	1	2
4 Diana Draayer	7	1	2
TM TEAM	1	1	2
13 Katie Aney	7	1	2

## Penalty Minutes	GP	Pen	Min
10 Courtney Boucher	7	3	6
18 Carolyn Draayer	7	2	4
2 Courtney Bethune	7	2	4
5 Rachel Skoglund	7	2	4
7 Lydia Wagner	7	2	4
6 Emily Gustafson	7	2	4
15 Leah Johnson	7	1	2
14 Katy Fuller	7	1	2
13 Katie Aney	7	1	2
TM TEAM	1	1	2

Gustavus Adolphus Hockey
Gustavus Adolphus Combined Team Statistics (as of Dec 04, 2014)
All games

Date	Opponent	Score	Ast
Nov 04	at UNF/SUPERIOR	W 3-1	123
Nov 14	CONCORDIA COLLEGE	W 3-1	111
Nov 15	CONCORDIA COLLEGE	W 2-8	73
Nov 21	HAMLIN UNIVERSITY	W 6-3	143
Nov 22	at Hamline University	W 4-8	164
Nov 28	at Philadelphia State	W 4-4	381
Nov 30	vs IS Middlebury	Lt 2-3	128

TEAM STATISTICS **GAC** **OPP**

SHOT STATISTICS

Goals-Shot attempts	24-265	12-171
Shot pct.	.091	.070
Goals/Game	3.4	1.7
Shots/Game	37.9	24.4

POWER PLAYS

Goals-Power Plays	5-27	1-15
Conversion Percent	.185	.062
Shot Attempts	71	20
Shot Percent	.070	.050

SHORT-HANDED

Goals-Shot attempts	0-8	0-10
Shot Percent	.000	.000

GOAL BREAKDOWN

Power Play	5	1
Short-handed	0	0
Empty net	0	0
Penalty	0	0
Unassisted	5	1
Overtime	0	1
Shutout	0	0
Delayed Penalty	0	0

PENALTIES

Number	20	30
Minutes	40	50
Penalties/Game	2.9	4.3
Pen minutes/Game	5.7	8.5

FACEDOFFS (W-L) 242-160 160-242

Faced Off W-L Pct. .602 .298

SHOOTOUTS (Made-Att) 1-4 2-4

Record:	Overall	Home	Away	Neutral
ALL GAMES	5-1-1	4-0-0	1-0-1	0-1-0
CONFERENCE	4-0-0	3-0-0	1-0-0	0-0-0
NON-CONFERENCE	1-1-1	1-0-0	0-0-1	0-1-0

#	Player	gp	g	a	pts	sh	sh%	ppm	ppa	sh
9	Erica Power	7	3	6	9	30	.300	0-0	0	0
18	Carolyn Draayer	7	4	2	6	36	.111	2-4	2	0
4	Diana Drayer	7	1	4	5	19	.263	1-2	0	0
20	Kaitlyn Klein	7	3	1	4	13	.231	0-0	0	0
3	Emily Reibert	6	3	1	4	10	.300	1-2	0	0
14	Katy Fuller	7	2	2	4	13	.154	1-2	0	0
8	A. Eder-Zdeschik	5	2	1	3	23	.087	0-0	0	0
7	Lydia Wagner	7	2	1	3	12	.167	2-4	1	0
5	Rachel Singlund	7	1	2	3	12	.083	2-4	0	0
10	Courtney Boucher	7	0	3	3	24	.000	3-6	0	0
13	Katie Arney	7	2	0	2	18	.111	1-2	1	0
22	Marissa Brandt	7	1	1	2	8	.125	0-0	1	0
6	Emily Gustafson	7	0	1	1	8	.000	2-4	0	0
17	Callie Johnson	2	0	1	1	1	.000	0-0	0	0
15	Lesh Johnson	7	0	1	1	4	.000	1-2	0	0
11	Keri Pickel	7	0	1	1	10	.000	0-0	0	0
2	Courtney Bethune	7	0	0	0	7	.000	2-4	0	0
12	Hannah Heacox	1	0	0	0	2	.000	0-0	0	0
23	Laura Johnson	4	0	0	0	8	.000	1-2	0	0
19	Allie Lewis	7	0	0	0	4	.000	0-0	0	0
24	Courtney Potter	3	0	0	0	3	.000	0-0	0	0
	TM TEAM	1	0	0	0	0	.000	1-2	0	0
	Total	7	24	28	52	265	.091	28-40	5	0
	Opponents	7	12	17	29	171	.070	30-60	1	0

#	Goalie	gp	min	ga	svs	sv%	w-l-t
1	Lindsay Hibbard	7	385:03	9	140	.945	4-1-1
35	Amanda Koep	1	40:50	3	4	.571	1-0-0
	TM EMPTY NET	1	0:15	0	0	.000	0-0-0
	Total	7	426:09	12	149	.930	5-1-1
	Opponents	7	426:09	24	338	.909	1-5-1

Attendance Summary	GAC	Opponent
Total	450	545
Dates/Byg Per Date	4/112	2/272
Neutral Site Atty	1/130	

Goals by Period	1st	2nd	3rd	OT	Total
Gustavus Adolphus	4	8	12	0	24
Opponents	1	6	4	1	12

Shots by Period	1st	2nd	3rd	OT	Total
Gustavus Adolphus	28	50	46	0	265
Opponents	46	68	53	4	171

Saves by Period	1st	2nd	3rd	OT	Total
Gustavus Adolphus	45	62	49	3	159
Opponents	65	62	73	0	200

**Gustavus Adolphus Hockey
Gustavus Adolphus Game Results (as of Dec 04, 2014)
All games**

Date	Opponent	Score	Shots	Overall	Coaf	Time	Att.	Goals of record
Nov 04	#9 UW-SUPERIOR	W 3-1	29/23	1-0-0	0-0-0	2:08	123	Lindsey Hibbard
* Nov 14	CONCORDIA COLLEGE	W 3-1	42/30	2-0-0	1-0-0	2:05	111	Lindsey Hibbard
* Nov 15	CONCORDIA COLLEGE	W 2-0	44/18	3-0-0	2-0-0	1:54	73	Lindsey Hibbard
* Nov 21	HAMLIN UNIVERSITY	W 6-3	39/11	4-0-0	3-0-0	1:52	143	Amanda Koep
* Nov 22	at Hamline University	W 4-0	47/19	5-0-0	4-0-0	2:00	164	Lindsey Hibbard
Nov 29	at Plattsburgh State	Tot 4-4	26/42	5-0-1	4-0-0	2:12	381	Lindsey Hibbard
Nov 30	vs #5 Middlebury	Lot 2-3	38/28	6-1-1	4-0-0	2:03	120	Lindsey Hibbard

Team Record	W-L-T	Attendance	Dates	Total	Avg.
Overall:	5-1-1	Total:	7	1115	169
Conference:	4-0-0	Home:	4	450	112
Home:	4-0-0	Away:	2	545	272
Away:	1-0-1	Neutral:	1	120	120
Neutral:	0-1-0				
Overtime:	0-1-1				