

GUSTAVUS ADOLPHUS COLLEGE

2014-15 WOMEN'S BASKETBALL

2013-14 SCHEDULE/RESULTS

DATE	OPPONENT	TIME/RESULT
11/8	CROWN COLLEGE	W 81-31
11/9	MARTIN LUTHER	W 74-58
11/22	MINNESOTA MORRIS	1:00 p.m.
11/29	University of Dubuque#	1:00 p.m.
11/30	TBD#	TBD
12/3	University of St. Thomas*	7:00 p.m.
12/6	ST. CATHERINE UNIVERSITY*	1:00 p.m.
12/13	HAMLIN UNIVERSITY*	1:00 p.m.
12/20	University of Northwestern	3:00 p.m.
12/30	UW-River Falls	7:00 p.m.
1/3	St. Olaf College*	1:00 p.m.
1/7	Augsburg College*	7:00 p.m.
1/10	Saint Mary's University*	1:00 p.m.
1/14	CONCORDIA COLLEGE*	5:45 p.m.
1/17	College of Saint Benedict*	3:00 p.m.
1/21	BETHEL UNIVERSITY*	7:00 p.m.
1/24	St. Catherine University*	3:00 p.m.
1/28	UNIVERSITY OF ST. THOMAS*	7:00 p.m.
1/31	Hamline University*	1:00 p.m.
2/4	Carleton College*	7:00 p.m.
2/7	ST. OLAF COLLEGE*	1:00 p.m.
2/11	Concordia College*	5:45 p.m.
2/14	SAINT MARY'S UNIVERSITY*	1:00 p.m.
2/18	MACALESTER COLLEGE*	7:00 p.m.
2/21	COLLEGE OF SAINT BENEDICT*	1:00 p.m.

HOME GAMES in BOLD FACE CAPS; all times Central

* MIAC game

UW-Stout Thanksgiving Tournament

GUSTAVUS QUICK FACTS

Location:	St. Peter, Minnesota
Address:	800 West College Ave. St. Peter, MN 56082
Founded:	1862
Enrollment:	2,500
Nickname:	Golden Gusties
School Colors:	Black and Gold
Home Arena:	Gus Young Court
Conference:	Minnesota Intercollegiate Athletic
NCAA Affiliation:	NCAA Division III
President:	Rebecca M. Bergman
Athletic Director:	Tom Brown
Assistant Athletic Director:	Jared Phillips
Athletic Trainer:	Troy Banse
Equipment Manager:	Wayne Norman
Sports Information Director:	Ethan Armstrong
Sports Information Graduate Assistant:	Nick Hoelmer

GUSTAVUS ADOLPHUS COLLEGE

"Golden Gusties"

2-0

UNIVERSITY OF MINN., MORRIS

"Cobbers"

1-2

GAME THREE

GAME INFORMATION

DATE: Saturday, November 22

TIME: 1:00 p.m.

SITE: St. Peter, Minnesota

VENUE: Gus Young Court

WEB VIDEO: <http://portal.stretchinternet.com/gac>

LIVE STATS: <https://gustavus.edu/athletics/wbb/LIVE/xlive.htm>

SETTING THE SCENE

The Gustavus Adolphus women's basketball team will play host to the University of Minnesota, Morris in a non-conference test on Saturday, Nov. 22 at 1:00 p.m. on Gus Young Court. The Gusties head into Saturday at 2-0 after opening up their 2014-15 campaign with wins over Crown College (81-31) and Martin Luther College (74-58) at the Gustavus Tip Off Classic held last Saturday and Sunday at Gus Young Court. The Cougars are 1-2 after picking up their first win of the season on Tuesday night with a 94-52 victory over Trinity Bible College at home on Jim Gremmels Court.

LIVE COVERAGE

[Live video](#) and [live stats](#) for Saturday's game will be produced by Gustavus. New this season, Gustavus will provide a high definition video stream of all home games for viewing on your computer, tablet, or smart phone through GameCentral by Stretch Internet. Gustavus sports information director Ethan Armstrong will be at Gus Young Court for the live call of the games.

LAST TIME OUT

The Gustavus women's basketball team began a new season with a pair of victories at the Gustavus Tip Off Classic last weekend. The Gusties cruised by both Crown on Saturday and Martin Luther on Sunday after shooting over 40-percent from the field as a team in both games. The Black and Gold averaged 77.5 point per game and outrebounded its opponents 87-65 over the weekend. In its two games combined, Gustavus shot 43.9-percent from the field, 33.3-percent from three-point range, and 81.3-percent at the line.

Continued...

GUSTAVUS PROJECTED STARTERS

#	Player	Pos.	Yr.	Ht.	Hometown	PPG	RPG	FG%	3PT%	FT%	MIN.
10	Mikayla Miller	Fy.	G	5-8	Goodhue, Minn.	23.5	6.0	.381	.300	.857	28.5
32	Hannah Howard	So.	G	5-9	St. Paul, Minn.	7.5	4.5	.385	.000	.833	16.5
33	Lindsey Johnson	Jr.	F	6-0	Edina, Minn.	10.0	6.5	.667	1.000	1.000	24.5
34	Maddie Ehrich	Sr.	G	5-9	Eden Prairie, Minn.	5.5	2.5	.500	.000	.500	18.0
43	Miranda Rice	Fy.	F	5-11	Forest Lake, Minn.	7.5	3.5	.545	.000	.750	19.0

MINNESOTA MORRIS PROJECTED STARTERS

#	Player	Pos.	Yr.	Ht.	Hometown	PPG	RPG	FG%	3PT%	FT%	MIN.
10	Maja Coomes	G	5-6	Jr.	Wahkon, Minn.	5.3	1.3	.267	.500	1.000	22.7
12	Kendra Wycoff	G	5-6	Sr.	Montrose, Minn.	14.3	4.3	.302	.286	.750	26.7
22	Kayla Kraemer	G	5-6	Jr.	Brainerd, Minn.	10.0	5.3	.419	.250	1.000	28.0
31	Tori Holt	F	6-1	So.	Rapid City, S.D.	8.7	9.0	.414	.000	.222	23.0
32	Connor Lewis	G	5-5	Sr.	Comstock, Minn.	1.3	5.0	.182	.000	.000	22.3



TWITTER
[@GustieAthletics](#)



FACEBOOK
<facebook.com/GustieAthletics>



GAME CENTRAL
client.stretchinternet.com/client/gac.portal



YOUTUBE
youtube.com/gustavusathletics



INSTAGRAM
instagram.com/gustieathletics



FLICKR
flickr.com/photos/gogusties



2014-15 GUSTAVUS ADOLPHUS WOMEN'S BASKETBALL GAME NOTES

GUSTAVUS VS. MINNESOTA MORRIS | SATURDAY, NOVEMBER 22

Rookie **Mikayla Miller (Goodhue, Minn.)** led the scoring charge with 47 points (23.5 ppg) after shooting 38.1-percent (16-42) from the field over the weekend. **Lindsey Johnson (Jr., Edina, Minn.)** was next in line with 20 points (10.0 ppg) on 66.7-percent shooting from the field. Johnson also lead the team in both rebounds with 13 (10 defensive) and assists with seven.

SERIES HISTORY

Saturday's game will be the 11th meeting between Gustavus and Minnesota Morris in women's basketball. The Cougars hold the advantage in the all-time series with a record of 7-3. In the most recent meeting between the two schools on Nov. 23, 2013, Laurie Kelly's squad ran away with a 70-38 victory on the road in Morris. The Gusties came out on fire and shot 59.1-percent from the field on their way to a 36-21 halftime lead. The team finished the game 44.2-percent from the floor, as Karina Schroeder and Julia Dysthe '14 led all scorers with 22 and 20 points, respectively.

SCOUTING THE COUGARS

The Minnesota Morris women's basketball team earned its first victory of the season on Tuesday night with a run-way 94-52 win over Trinity Bible. Prior to Tuesday night's game, the Cougars suffered a pair of tightly-contested losses to MIAC opponents at the Saint Benedict's Tournament held on Saturday and Sunday in St. Joseph. Minnesota Morris first suffered a 50-43 loss to host Saint Ben's before falling to Saint Mary's 68-65.

After leading the way with 18 points on 7-of-17 shooting from the field and 4-of-11 shooting from three-point range against Trinity Bible, Kendra Wycoff heads into the weekend the Cougars' top scorer averaging 14.3 points per game. Wycoff is shooting 30.2-percent from the field and 28.6-percent from three. Next in line is Kayla Kraemer who averages 10 points per game and is shooting 41.9-percent from the field.

As a team, Minnesota Morris is scoring 67.3 points per game and is shooting 38.7 percent from the floor, 33.9-percent from three, and 58.5-percent at the line. The Cougars are also leading the UMAC in rebounding (44.7 rpg) and have taken care of the ball with the lowest turnovers per game average at 16.

NEWS AND NOTES

Welcome To College Basketball, Rook... First-year guard Mikayla Miller was confident and unafraid to pull the trigger in her first two collegiate basketball games last weekend at the Tip Off Classic. Gustavus's leading scorer in both wins, Miller scored 17 points on Saturday against Crown and 30 points on Sunday against Martin Luther. In the win over the Knights, the rookie went 9-for-22 from the field with the majority of her damage coming at the free throw line where she went 12-for-12. Thanks to her performance, Miller became the eighth player in Gustavus women's basketball history to reach the 30-point mark in a single game. She is also the first Gustie to score 30 points since Bri Monahan dropped 32 against St. Olaf on Jan. 11, 2006

Free Throws... Led by Mikayla Miller's performance, Gustavus was able to cash in on its trips to the free throw line throughout this season's opening weekend. The Gusties are shooting 81.2-percent (39-48) from the charity stripe, which is the highest mark in the MIAC amongst teams with more 15 trips to the line. Gustavus's 18-for-20 (.900) showing at the line against Martin Luther was the team's best performance since going 18-for-19 (.947) against Hamline on Jan. 5, 2013.

By The Numbers...

13-0 - Gustavus's record at Gus Young Court in November since the 2000-01 season. The Gusties have not lost on their home court during the month of November since Nov. 23, 1999 when they fell to Wartburg by the score of 79-74 in overtime.

7 - Lindsey Johnson's rebounding average her last three games, which extends to last season's final game.

MIAC STANDINGS/SCHEDULE

SCHOOL	MIAC	OVERALL	AROUND THE LEAGUE
Saint Mary's	0-0	3-0	Saturday, Nov. 22
Gustavus	0-0	2-0	Buena Vista at Bethel
St. Catherine	0-0	2-0	Minn.-Morris at Gustavus
St. Thomas	0-0	2-0	Wis.-Superior at Macalester
Augsburg	0-0	1-0	Saint Mary's at Crown (Minn.)
Bethel	0-0	1-0	Augsburg at St. Scholastica
Macalester	0-0	1-0	St. Olaf at Wis.-River Falls
Concordia	0-0	1-1	Saint Benedict at Pacific Lutheran
Saint Benedict	0-0	1-1	Hamline at Northwestern (Minn.)
St. Olaf	0-0	1-1	Concordia at Puget Sound
Carleton	0-0	0-1	
Hamline	0-0	0-2	Monday, Nov. 24
			St. Catherine at Crown (Minn.)

STATISTICAL COMPARISON

GUSTAVUS	vs.	UM, MORRIS
2-0	Overall Record	1-2
0-0	Conference Record	0-0
77.5	Points Per Game	67.3
+33.0	Scoring Margin	10.6
.439	Field Goal Percentage	.387
.333	3-PT Field Goal Percentage	.339
.813	Free Throw Percentage	.585
87	Rebounds	134
43.5	Rebounds Per Game	44.7
+11.0	Rebounding Margin	+7.7
32	Assists	44
16.0	Assists Per Game	14.7
0.8	Assist/Turnover Ratio	0.9
21.0	Turnovers Per Game	16.0
+8.0	Turnover Margin	0.3

GUSTAVUS'S RECORD WHEN...

At home...	2-0
On the road...	0-0
A neutral site...	0-0
In MIAC games...	0-0
In non-conference games...	2-0
When leading after first half...	2-0
When tied after first half...	0-0
When trailing after first half...	0-0
In overtime...	0-0
GAC has more rebounds...	2-0
Opponent has more rebounds...	0-0
Rebounds equal...	0-0
GAC has more assists...	2-0
Opponent has more assists...	0-0
Assists equal...	0-0
GAC commits more fouls...	2-0
Opponent commits more fouls...	0-0
Fouls equal...	0-0
GAC commits more turnovers...	0-0
Opponent commits more turnovers...	2-0
Turnovers equal...	0-0
GAC scores first...	2-0
Opponent scores first...	0-0
Games decided by three or less...	0-0
Games decided by single figures...	0-0
Games decided by double figures...	2-0
In November...	2-0
In December...	0-0
In January...	0-0
In February...	0-0
Following a win...	1-0
Following a loss...	0-0



2014-15 GUSTAVUS ADOLPHUS WOMEN'S BASKETBALL GAME NOTES

GUSTAVUS VS. MINNESOTA MORRIS | SATURDAY, NOVEMBER 22

2014-15 GUSTAVUS WOMEN'S BASKETBALL TEAM



2014-15 GUSTAVUS WOMEN'S BASKETBALL NUMERICAL ROSTER

No.	Name	Year	Position	Height	Hometown	High School
3	Emee Udo	First-year	Guard	5-9	Apple Valley, Minn.	Eastview
5	Kelsey Carpenter	Sophomore	Guard	5-8	St. Peter, Minn.	St. Peter
10	Mikayla Miller	First-year	Guard	5-8	Goodhue, Minn.	Goodhue
11	Emily FitzSimmons*	Senior	Guard	5-7	Good Thunder, Minn.	Maple River
12	Anne Odegard	Sophomore	Guard	5-9	St. Paul, Minn.	Cretin-Derham Hall
14	Kate Thiesse	First-year	Forward	5-10	Welcome, Minn.	Martin County West
15	Siri Sviggum	First-year	Guard	5-7	Dennison, Minn.	Kenyon-Wanamingo
20	Hannah Silva-Breen	First-year	Forward	5-10	Prior Lake, Minn.	Prior Lake
21	Morgan Iverson	Sophomore	Forward	5-9	Waconia, Minn.	Waconia
22	Julie Sohre	Junior	Forward	5-10	Good Thunder, Minn.	Maple River
23	Heather Hohenstein	Junior	Guard	5-5	Garden City, Minn.	Lake Crystal Wellcome Memorial
24	Taylor Ebnet	Sophomore	Guard	5-7	Lake Lillian, Minn.	BOLD
30	Kelle Nett	Junior	Forward	5-10	Spring Valley, Ill.	Hall
32	Hannah Howard	Sophomore	Guard	5-9	St. Paul, Minn.	Cretin-Derham Hall
33	Lindsey Johnson*	Junior	Forward	6-0	Edina, Minn.	Edina
34	Maddie Ehrich	Senior	Guard	5-9	Eden Prairie, Minn.	Lion's Gate Christian Academy
40	Anna Lundquist	Junior	Post	5-11	Rochester, Minn.	Mayo
42	Emmaline Crawford	Sophomore	Post	6-0	Mankato, Minn.	East
43	Miranda Rice	First-year	Forward	5-11	Forest Lake, Minn.	Forest Lake
44	Stephanie Klockmann	First-year	Post	5-10	Brownston, Minn.	Glencoe-Silver Lake
50	Cara Christiansen	Sophomore	Forward	5-10	North Mankato, Minn.	West

Head Coach: Laurie Kelly (Third Season)

Assistant Coaches: Dan Wolfe, Angie Potts, Nate Otto



2014-15 GUSTAVUS ADOLPHUS WOMEN'S BASKETBALL GAME NOTES

GUSTAVUS VS. MINNESOTA MORRIS | SATURDAY, NOVEMBER 22

HEAD COACH LAURIE KELLY

Third Season

29-23 at Gustavus

251-214 Overall

Office: 507-933-6145

Email: lkelly@gustavus.edu

Laurie Kelly is in her third season as the head coach of the Gustavus women's basketball team. Kelly, a 1993 graduate of the University of St. Thomas with a degree in speech communications, came to Gustavus from Northern Arizona University in Flagstaff, where she directed the Division I Lumberjacks for nine seasons.

Thanks to a late surge during which the 2013-14 Gustavus women's basketball team won seven of eight games from late-January to mid-February, the Gusties were able finish sixth in the conference standings with a record of 11-11 and earn a trip to the MIAC Playoffs for an MIAC-best 14th consecutive season. Gustavus finished the year with a record of 14-12 overall after falling on the road to No. 3-seeded St. Thomas 66-51 in the quarterfinals of the MIAC Playoffs.

Senior guard Julia Dysythe (White Bear Lake, Minn.) and sophomore post Karina Schroeder (Lake Crystal, Minn.) were both honored as members of the All-Conference Team following the season. Dysythe, a first time all-conference performer, scored a career-high 382 points (13.7 ppg) and shot 42.1-percent from the field. Schroeder, a member of the MIAC All-Rookie Team last season, established herself as one of the top post players in the league after averaging 14.2 points per game, shooting 53.3-percent from the field, and bringing down an average of 8.9 rebounds per game. She led the team in all three categories and finished with the second-best field goal shooting percentage in the league at 51.6-percent against league opponents.

A Rochester, Minnesota, native, Kelly made a quick ascent through the Division II and I coaching ranks after record setting Division III playing career at the University of St. Thomas in the early '90s. In the past nine years at Northern Arizona, she has compiled the most wins in the program's history (117), while also directing the team to its first-ever Big Sky Conference tournament title and NCAA tournament bid in the 2005-06 season. During Kelly's tenure, the Lumberjacks advanced to the Big Sky tournament six times with two appearances in the championship game (2006, 2007), and her teams have registered two of the three 20-win seasons in the program's history.

In addition to quality on the floor, her squads have also been strong in the classroom, with four players earning CoSIDA Academic All-District honors including one Academic All-American. The Lumberjacks were recognized in the Women's Basketball Coaches Association Top 25 Academic Honor Roll six times, with two Top Ten national rankings.

Following the 2012-13 season, the Gustavus women's basketball team achieved a significant milestone when the Women's Basketball Coaches Association (WBCA) announced its Academic Top 25 Team Honor Roll following the year. Making their 15th appearance on the NCAA Division III honor roll, the Gusties were recognized as the team with the top cumulative grade point average in country at a 3.600 – a first in the program's history.

Prior to her position at Northern Arizona, Kelly coached at Binghamton University in New York and built the Bearcats into one of the top Division II programs in the country before helping the institution transition to a Division I program in 2001-02. In that first year of Division I competition, Kelly directed the team to a 19-9 record and a second-place finish in the America East Conference. During her five years at Binghamton, Kelly compiled a record of 94-22, including a mark of 75-13 in the program's final three years at the Division II level, and her squads won New England Collegiate Conference (NECC) titles in 1999 and 2000 and Eastern Collegiate Athletic Conference (ECAC) titles in 2000 and 2001. She was named ECAC Coach of the Year in 2000 and New York State Coach of the Year in 2002. Kelly started her collegiate coaching career as the graduate assistant coach at Minnesota State University, Mankato from 1996 to 1998. While she was at Minnesota State, Mankato she earned a master's degree in physical education with an emphasis in sports administration.

Before her success in the coaching ranks, Laurie Trow Kelly was a standout player at the University of St. Thomas from 1989 to 1993 and is recognized by many as one of the greatest players in NCAA Division III history. A gifted athlete, the 6-1 Kelly scored 2,607 points and pulled down 1,204 rebounds in four years, earning Kodak All-America honors three consecutive seasons. In her senior season (1992-93), Kelly was voted National Player of the Year by the Women's Basketball Coaches Association after averaging more than 26 points per game. She set 22 conference and 24 school records, was conference MVP three times and was also named Midwest Sports Channel NCAA Division III Women's Athlete of the Year. In January of 2006, Kelly was one of five players selected to the NCAA Division III 25th Anniversary Team.

Laurie Kelly is the ninth head coach in the history of the Gustavus women's basketball program. The Gusties have compiled an all-time record of 632-434 (.593), winning two Minnesota Intercollegiate Athletic Conference championships and making five NCAA tournament appearances.

In addition to her coaching duties, Kelly serves as the coordinator of the Gustavus Health Promotion program (GHP). The Gustavus Health Promotion program offers employees at Gustavus a variety of educational opportunities, assessment tools, and physical activity experiences so that they can achieve and maintain a healthy lifestyle.

Kelly lives in St. Peter with and her husband, Matt, and their two daughters, Morgan and Madison.





2014-15 GUSTAVUS ADOLPHUS WOMEN'S BASKETBALL GAME NOTES

GUSTAVUS VS. MINNESOTA MORRIS | SATURDAY, NOVEMBER 22

2014-15 TV/RADIO ROSTER



**EMME
EDO**
Guard - First-year
Apple Valley, Minn.



**KELSEY
CARPENTER**
Guard - First-year
St. Peter, Minn.



**MIKAYLA
MILLER**
Guard - First-year
Goodue, Minn.



**EMILY
FITZSIMMONS**
Guard - Senior
Good Thunder, Minn.



**ANNE
ODEGARD**
Guard - Sophomore
St. Paul, Minn.



**KATE
THIESSE**
Forward - First-year
Welcome, Minn.



**SIRI
SVIGGUM**
Guard - First-year
Dennison, Minn.



**HANNAH
SILVA-BREEN**
Forward - First-year
Prior Lake, Minn.



**MORGAN
IVERSON**
Forward - Sophomore
Waconia, Minn.



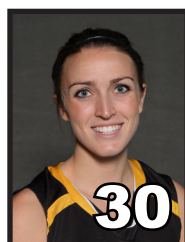
**JULIE
SOHRE**
Forward - Junior
Good Thunder, Minn.



**HEATHER
HOHENSTEIN**
Guard - Junior
Garden City, Minn.



**TAYLOR
EBNET**
Guard - Sophomore
Lake Lillian, Minn.



**KELLE
NETT**
Forward - Junior
Spring Valley, Ill.



**HANNAH
HOWARD**
Guard - Sophomore
St. Paul, Minn.



**LINDSEY
JOHNSON**
Forward - Junior
Edina, Minn.



**MADDIE
EHRICH**
Guard - Senior
Eden Prairie, Minn.



**ANNA
LUNDQUIST**
Post - Junior
Rochester, Minn.



**EMMALINE
CRAWFORD**
Post - Sophomore
Mankato, Minn.



**MIRANDA
RICE**
Forward - First-year
Forest Lake, Minn.



**STEPHANIE
KLOCKMANN**
Post - First-year
Browntown, Minn.



**CARA
CHRISTIENSEN**
Post - Sophomore
North Mankato, Minn.



**LAURIE
KELLY**
Head Coach



**DAN
WOLFE**
Assistant Coach



2014-15 GUSTAVUS ADOLPHUS WOMEN'S BASKETBALL GAME NOTES

GUSTAVUS VS. MINNESOTA MORRIS | SATURDAY, NOVEMBER 22

2014-15 COMBINED SEASON STATISTICS

RECORD:	OVERALL	HOME	AWAY	NEUTRAL
ALL GAMES	2-0	2-0	0-0	0-0
CONFERENCE	0-0	0-0	0-0	0-0
NON-CONFERENCE	2-0	2-0	0-0	0-0

#	Player	gp-gs	min	avg	Total		3-Point		F-Throw		Rebounds				pf	dq	a	to	blk	stl	pts	avg
					fg-fga	pct	3fg-fga	pct	ft-fa	pct	off	def	tot	avg								
10	Mikayla Miller	2-2	57	28.5	16-42	.381	3-10	.300	12-14	.857	5	7	12	6.0	3	0	6	8	0	8	47	23.5
33	Lindsey Johnson	2-2	49	24.5	8-12	.667	2-2	1.000	2-2	1.000	3	10	13	6.5	4	0	7	1	1	3	20	10.0
43	Miranda Rice	2-2	38	19.0	6-11	.545	0-0	.000	3-4	.750	2	5	7	3.5	6	0	2	2	0	2	15	7.5
32	Hannah Howard	2-2	33	16.5	5-13	.385	0-1	.000	5-6	.833	4	5	9	4.5	6	0	4	7	0	6	15	7.5
34	Maddie Ehrich	2-2	36	18.0	5-10	.500	0-0	.000	1-2	.500	2	3	5	2.5	6	0	6	2	0	3	11	5.5
03	Emee Udo	2-0	26	13.0	4-6	.667	0-0	.000	2-3	.667	2	5	7	3.5	2	0	0	1	1	0	10	5.0
05	Kelsey Carpenter	2-0	27	13.5	3-8	.375	2-4	.500	0-0	.000	0	0	0	0.0	3	0	0	2	0	0	8	4.0
40	Anna Lundquist	2-0	19	9.5	1-4	.250	0-0	.000	4-4	1.000	4	3	7	3.5	3	0	0	2	1	1	6	3.0
15	Siri Sviggum	2-0	39	19.5	2-8	.250	0-4	.000	1-2	.500	3	2	5	2.5	1	0	0	0	1	3	5	2.5
50	Cara Christiansen	2-0	16	8.0	1-2	.500	0-0	.000	3-4	.750	1	2	3	1.5	3	0	1	3	0	0	5	2.5
12	Anne Odegard	2-0	7	3.5	1-3	.333	0-2	.000	3-3	1.000	0	0	0	0.0	1	0	0	2	0	0	5	2.5
24	Taylor Ebnet	1-0	3	3.0	0-0	.000	0-0	.000	2-2	1.000	0	1	1	1.0	1	0	0	2	0	0	2	2.0
11	Emily FitzSimmons	2-0	15	7.5	1-2	.500	1-1	1.000	0-0	.000	0	2	2	1.0	1	0	1	3	0	1	3	1.5
22	Julie Sohre	2-0	13	6.5	1-1	1.000	0-0	.000	1-2	.500	0	1	1	0.5	2	0	1	1	0	0	3	1.5
42	Emmaline Crawford	1-0	0	0.0	0-0	.000	0-0	.000	0-0	.000	0	3	3	3.0	1	0	0	0	0	1	0	0.0
20	Hannah Silva-Breen	1-0	2	2.0	0-0	.000	0-0	.000	0-0	.000	0	0	0	0.0	0	0	0	0	0	0	0	0.0
23	Heather Hohenstein	2-0	17	8.5	0-1	.000	0-0	.000	0-0	.000	0	1	1	0.5	3	0	3	5	0	0	0	0.0
30	Kelle Nett	2-0	3	1.5	0-0	.000	0-0	.000	0-0	.000	1	2	3	1.5	0	0	1	0	0	0	0	0.0
Total.....		2	400		54-123	.439	8-24	.333	39-48	.813	32	55	87	43.5	46	0	32	42	4	28	155	77.5
Opponents.....		2	404		29-97	.299	6-22	.273	25-44	.568	23	42	65	32.5	38	-	14	58	3	21	89	44.5

TEAM STATISTICS

	GAC	OPP
SCORING	155	89
Points per game	77.5	44.5
Scoring margin	+33.0	-
FIELD GOALS-ATT	54-123	29-97
Field goal pct	.439	.299
3 POINT FG-ATT	8-24	6-22
3-point FG pct	.333	.273
3-pt FG made per game	4.0	3.0
FREE THROWS-ATT	39-48	25-44
Free throw pct	.813	.568
F-Throws made per game	19.5	12.5
REBOUNDS	87	65
Rebounds per game	43.5	32.5
Rebounding margin	+11.0	-
ASSISTS	32	14
Assists per game	16.0	7.0
TURNOVERS	42	58
Turnovers per game	21.0	29.0
Turnover margin	+8.0	-
Assist/turnover ratio	0.8	0.2
STEALS	28	21
Steals per game	14.0	10.5
BLOCKS	4	3
Blocks per game	2.0	1.5
ATTENDANCE	254	0
Home games-Avg/Game	2-127	0-0
Neutral site-Avg/Game	-	0-0

Date	Opponent		Score	Att.
11-15-14	CROWN COLLEGE	w	31-81	182
11-16-14	MARTIN LUTHER	w	58-74	72

* - Conference game

Score by Periods	1st	2nd	Totals
Gustavus Adolphus Col	81	74	155
Opponents	41	48	89



2014-15 GUSTAVUS ADOLPHUS WOMEN'S BASKETBALL GAME NOTES

GUSTAVUS VS. MINNESOTA MORRIS | SATURDAY, NOVEMBER 22

2014-15 GAME-BY-GAME STATISTICAL COMPARISON

Opponent	1st	2nd	Score	Mar	Total FG	FG Pct	3-Pointers	3FG Pct	Free Throws	FT Pct	Rebounds	Assist	T/Over	Block	Steal	Fouls
CROWN COLLEGE	43/17	38/14	81-31	+50	26-60/10-44	.433/.227	8-20/2-9	.400/.222	21-28/9-20	.750/.450	44/34 +10	15/5	21/34	2/0	14/10	26/20
MARTIN LUTHER	38/24	36/34	74-58	+16	28-63/19-53	.444/.358	0-4/4-13	.000/.308	18-20/16-24	.900/.667	43/31 +12	17/9	21/24	2/3	14/11	20/18

Note: Game totals are displayed in the format TEAM/OPPONENT for each category