



GUSTAVUS ADOLPHUS COLLEGE

2013-14 MEN'S HOCKEY GAME NOTES

2013-14 GUSTAVUS SCHEDULE

DATE	OPPONENT	TIME/RESULT
11/1	Bethel University#	W 2-1
11/3	University of St. Thomas#	L 3-5
11/8	UW-Stevens Point	L 4-8
11/9	UW-Stout	W 3-1
11/15	CONCORDIA COLLEGE*	L 1-3
11/16	CONCORDIA COLLEGE*	W 3-1
11/22	HAMLINE UNIVERSITY*	W 5-2
11/23	Hamline University*	W 5-1
11/29	Lawrence University%	T 6-6
11/30	Marian University%	W 3-2
12/6	St. Olaf College*	W 3-1
12/7	ST. OLAF COLLEGE*	T 2-2
1/10	LAKE FOREST COLLEGE	T 2-2
1/11	ADRIAN COLLEGE	L 0-2
1/17	AUGSBURG COLLEGE*	W 3-1
1/18	Augsburg College*	W 4-2
1/24	SAINT MARY'S UNIVERSITY*	W 4-1
1/25	Saint Mary's University*	W 5-1
1/31	SAINT JOHN'S UNIVERSITY*	W 2-1
2/1	Saint John's University*	W 4-1
2/7	UW-River Falls	T 2-2
2/14	University of St. Thomas*	L 2-4
2/15	UNIVERSITY OF ST. THOMAS*	L 1-4
2/21	BETHEL UNIVERSITY*	7:05 p.m.
2/22	Bethel University*	7:00 p.m.

HOME GAMES in BOLD FACE CAPS; all times Central

** MIAC game*

MIAC Showcase (Blaine, Minn.)

% MIAC/NCHA Showcase (Appleton, Wis.)

GUSTAVUS QUICK FACTS

Location:	St. Peter, Minnesota
Address:	800 West College Ave. St. Peter, MN 56082
Founded:	1862
Enrollment:	2,500
Nickname:	Golden Gusties
School Colors:	Black and Gold
Home Arena:	Don Roberts Ice Rink
Conference:	Minnesota Intercollegiate Athletic
NCAA Affiliation:	NCAA Division III
President:	Jack R. Ohle
Athletic Director:	Tom Brown
Assistant Athletic Director:	Jared Phillips
Athletic Trainer:	Troy Banse
Equipment Manager:	Wayne Norman
Sports Information Director:	Ethan Armstrong
Sports Information Graduate Assistant:	Tyler Grey

GUSTAVUS ADOLPHUS COLLEGE

"Golden Gusties"

13-6-4 Overall, 10-3-1 MIAC

BETHEL UNIVERSITY

"Royals"

3-18-2 Overall, 2-11-1 MIAC

GAME 24

GAME INFORMATION

DATE: Friday, February 21

TIME: 7:05 p.m.

SITE: St. Peter, Minnesota

ARENA: Don Roberts Ice Rink

WEB VIDEO: <http://client.stretchinternet.com/client/gac.portal>

LIVE STATS: <https://gustavus.edu/athletics/hky/LIVE/xlive.htm>

GAME 25

GAME INFORMATION

DATE: Saturday, February 22

TIME: 7:00 p.m.

SITE: Blaine, Minnesota

ARENA: Bethel University Ice Arena | Schwan Super Rink

WEB VIDEO: <http://client.stretchinternet.com/client/bethel.portal>

LIVE STATS: <http://client.stretchinternet.com/client/bethel.portal>

SETTING THE SCENE

The Gustavus Adolphus men's hockey team will conclude the 2013-14 regular season with home-and-home series against Minnesota Intercollegiate Athletic Conference opponent Bethel University this weekend.

Gustavus and Bethel will begin the weekend on Friday, Feb. 21 with a 7:05 p.m. game at Don Roberts Ice Rink. Friday's game is designated as Senior Night and a special tribute will be made to Gustavus's seniors before the drop of the puck. Gustavus and Bethel will then cap the regular season on Saturday, Feb. 22 with a 7:00 p.m. at the Bethel Ice Arena located in the Schwan Super Rink in Blaine, Minn.

Gustavus enters the weekend in second place in the league standings with 32 points. At 13-6-4 overall and 10-3-1 in the MIAC, Gustavus needs just one point to secure the No. 2 seed in the MIAC Playoffs. Bethel has waved goodbye to any playoff hopes and comes into the series looking to play spoiler ranked eighth in the league with nine points at 3-18-2 overall and 2-11-1 in the MIAC.

Gustavus looks to rebound after suffering its first series sweep of the season to St. Thomas last weekend. The Gusties fell 4-2 on Friday night in Mendota Heights and 4-1 on Saturday night in St. Peter. Bethel was swept by Saint John's last weekend, falling by scores of 5-1 on Thursday in St. Cloud and 3-1 on Saturday in Blaine.



TWITTER
[@GustieAthletics](https://twitter.com/GustieAthletics)



FACEBOOK
facebook.com/GustieAthletics



GAME CENTRAL
client.stretchinternet.com/client/gac.portal



YOUTUBE
youtube.com/gustavusathletics



INSTAGRAM
instagram.com/gustieathletics



FLICKR
flickr.com/photos/gogusties

MEN'S HOCKEY MEDIA CONTACT

Sports Information Director: Ethan Armstrong

Email: earmstr2@gac.edu • **Cell:** 320-815-2351 • **Office:** 507-933-7647

14-TIME MIAC CHAMPION



2013-14 GUSTAVUS ADOLPHUS MEN'S HOCKEY GAME NOTES

STATISTICAL COMPARISON

Gustavus		Bethel
3.00 (4th)	Goals For	1.91 (8th)
2.35 (3rd)	Goals Against	3.26 (7th)
12.1%-12/99 (8th)	Power Play	13.4%-13/97 (7th)
85.6%-85/98 (3rd)	Penalty Kill	78.3%-72/92 (8th)
49.2%-97/197 (4th)	Combined Special Teams	45%-85/189 (7th)
13.0 (3rd)	Penalty Minutes	11.4 (8th)

- Overall per game averages with MIAC rank

THE SERIES

VS. BETHEL

All-Time	53-22-1
Last Meeting	W 2-1 (11/1/13)
Current Streak	W - 1

Head Coach Brett Petersen	
Record at Gustavus	195-147-32
vs. Bethel	7-17-9

Head Coach Charlie Burggraf	
Record at Bethel	22-68-8
vs. Gustavus	4-3-0

Last Ten		5-5-0
<u>Date</u>	<u>Location</u>	<u>Result</u>
11/1/13	Blaine, Minn.	W 2-1
11/10/12	St. Peter, Minn.	L 0-2
11/9/12	Blaine, Minn.	L 2-3
11/12/11	Blaine, Minn.	L 2-3
11/11/11	St. Peter, Minn.	W 4-1
11/20/10	St. Peter, Minn.	W 5-4
11/19/10	Blaine, Minn.	L 1-4
11/21/09	Blaine, Minn.	W 3-1
11/20/09	St. Peter, Minn.	L 5-6 OT
10/31/09	Bloomington, Minn.	W 4-3

CAREER SCORING VS. BETHEL

Player	Games	Goals	Assists	Points
Jack Walsh	5	2	2	4
Adam Smyth	7	1	1	2
Gustav Bengtson	7	1	1	2
Ryan Johnson	4	1	1	2
Andy Pearson	4	1	1	2
Darren Lopic	4	1	1	2
Zach May	6	0	1	1
Joey Olson	5	0	1	1
Sam Smith	3	1	0	1
Schlyer Adams	3	1	0	1
Drew Aspinwall	1	0	1	1
Corey Leivermann	1	0	1	1
Blake Schammel	5	0	0	0
Alex Gallen	3	0	0	0
Cory Ellis	1	0	0	0
Jared Docken	1	0	0	0
Gavin Tufte	1	0	0	0
Sam Majka	1	0	0	0
Ross Kovacs	1	0	0	0
Nate Paulsen	1	0	0	0
Goaltending	Record	Min.	GA	Saves
John McLean	1-1-0	119:46	4	43

GAME NOTES

LIVE COVERAGE

Gustavus will provide live video and live stats for Friday night's game through the links below.

Live Video

<http://client.stretchinternet.com/client/gac.portal>

Live Stats

<https://gustavus.edu/athletics/hky/LIVE/xlive.htm>

Live video and live stats for Saturday night's game will be provided by Bethel through the link below.

Live Video/Stats

<http://client.stretchinternet.com/client/bethel.portal>

GUSTAVUS EMBARKS ON 72ND SEASON OF MEN'S HOCKEY

The Gustavus men's hockey team is currently in its 72nd season of existence. One of the storied programs in collegiate hockey, Gustavus has compiled an all-time record of 846-617-68 overall and 561-424-42 in the MIAC. Gustavus first recognized a men's hockey team in 1937 when then Director of Physical Education George Myrum became interested in the sport and raised the funds to sponsor a team. The Gusties fell to Carleton in their first ever intercollegiate game in 1936. It would take until 1939, the first year Gustavus played on natural ice in the on-campus fieldhouse, for Gustavus to record the first victory in the program's history.

GUSTAVUS COACHING STAFF

Head Coach Brett Petersen is in his 14th season at the helm of the Gustavus men's hockey program. Petersen has compiled a 195-147-32 overall record in his 13-plus seasons at Gustavus. His 195 wins at Gustavus ranks second behind legendary coach Don Roberts. He has been named MIAC Coach of the Year twice in his tenure, once in 2001-02 and again in 2009-10. Petersen, a Roseville, Minn. native, received his Bachelor of Science degree in business administration from the University of Denver in 1992 and his Master of Science degree in athletic administration in 2000 from St. Cloud State.

Former men's hockey standout David Martinson is in his second season as the assistant men's hockey coach at Gustavus. A 2010 graduate and one of the most decorated hockey players to don a three crowned sweater, Martinson is a native of St. Louis Park, Minn. After being named the MIAC Player of the Year and earning All-America honors twice during his playing career, Martinson continued his education at the Bowling Green State University where he served as a graduate assistant for the men's hockey team. In the fall of 2012, David received his masters of education in sport administration.

MEET ST. THOMAS HEAD COACH CHARLIE BURGGRAF

Charlie Burggraf has been the head coach of the Bethel men's hockey team since 2010. Prior to taking the men's job, Burggraf served as the head coach of the Bethel women's hockey team for four years from 2006-to-2010. A native of Roseau, Minn., Burggraf played collegiate hockey at the University of North Dakota where he earned a degree in business administration/marketing in 1979.

Burggraf is assisted by Chris Carroll (Bethel '04), Bill Butters (Minnesota), and Steve Witkowski.

AROUND THE GLOBE

Gustavus's 2013-14 roster features 28 players from seven different states and two different countries other than the United States of America. Within the United States, Minnesota (19), California (1), Florida (1), Massachusetts (1), North Dakota (1), Oklahoma (1), and Vermont (1) are represented by 25 players. Outside the U.S., the Canadian province of British Columbia is home to both Sam Smith (Jr., Vancouver, B.C.) and Patrick Sullivan (Sr., Kelowna, B.C.), while Sweden is home to Gustav Bengtson (Sr., Sollentuna, Sweden).

PRIOR EXPERIENCE

Brett Petersen's 2013-14 Gustie squad consists of 26 players with prior junior hockey experience. Those 26 players come from 23 different junior hockey teams that hail from nine different leagues. Nine of Gustavus's players are alums of the North American Hockey League, four played in the Eastern Junior Hockey League, and three played in the Superior International Junior Hockey League. The United States Hockey League (2), Western States Hockey League (2), North American Tier III Hockey League (1), British Columbia Hockey League (1), Central Canada Hockey League (1), and the Minnesota Junior Hockey League (1) make up the rest of the leagues



2013-14 GUSTAVUS ADOLPHUS MEN'S HOCKEY GAME NOTES

GUSTAVUS HOCKEY FACTS

2012-13 Record:	17-8-3
2012-13 MIAC Record/Finish:	9-5-2/Fourth
All-Time Record:	846-617-68
All-Time MIAC Record:	561-424-42
MIAC Championships :	14
Lettermen Returning/Lost:	15/13
All-MIAC Honorees Returning/Lost:	1/0

GUSTAVUS' RECORD WHEN...

At home	5-3-2
On the road	6-2-2
Neutral Site	2-1-0
GAC scores 4 or more goals	6-1-1
GAC scores 3 goals	5-1-0
GAC scores 2 or fewer goals	2-4-3
GAC scores first	13-0-4
Opponent scores first	0-6-0
GAC leads after 1st period	9-0-1
Opponent leads after 1st period	1-3-1
Tied after 1st period	3-3-2
GAC leads after 2nd period	11-0-0
Opponent leads after 2nd period	1-5-3
Tied after 2nd period	1-1-1
Games decided by one goal	3-0
Games decided by two goals	5-3
Games decided by three goals	3-0
Games decided by four or more	2-1
GAC scores on the power play	8-2-1
GAC scoreless on the power play	5-4-3
GAC scores two or more PP goals	1-0-0
GAC outshoots opponent	8-5-4
GAC outshot by opponent	5-1-0
Shots equal	0-0-0
Friday	6-3-3
Saturday	7-2-1
Sunday	0-1-0
In November	6-3-1
In December	1-0-1
In January	5-1-1
In February	1-2-1
In March	0-0-0
Following a win	8-3-4
Following a loss	3-2-0
Following a tie	1-0-1

GAME NOTES

represented on Gustavus's roster. Gustavus seniors Joey Olson (Warroad, Minn.) and Adam Smyth (Burnsville, Minn.) are the only two players on this year's team to make the jump straight from high school to the collegiate ranks.

CAPTAIN'S LOG: 2013-14

In the 71 year history of Gustavus men's hockey, 85 players have earned the right to wear a "C" on their chest for the Black and Gold. Senior Corey Leivermann (North Mankato, Minn.) and junior Jack Walsh (Mahtomedi, Minn.) serve as captains of this year's team, becoming the 86th and 87th in the history of the program.

LETTERWINNERS AND FRESH FACES

Brett Petersen returned 15 letterwinners from last year's team that went 17-8-3 overall (9-5-2 MIAC) and advanced to the MIAC Playoff Championship. To go along with his 15 returning letterwinners, coach Petersen also welcomes 11 new players to the program. Nine of the fresh faces are freshman while the other two are transfers from schools in the WIAC. This year's freshman class includes Jared Docken (Northfield, Minn.), Drew Apsinwall (Maple Grove, Minn.), Tony Paulson (Maple Grove, Minn.), Sam Akins (Stowe, Vt.), Sam Majka (Wayzata, Minn.), Blake Barnes (Broken Arrow, Okla.), Ross Kovacs (Dickinson, N.D.), Joncarlo Westerlund (Baudette, Minn.), and Erik Johnson (Rice, Minn.). Gavin Tufte (So., Blaine, Minn.) is a transfer from UW-Stout, and Alec Austin (So., Fort Lauderdale, Fla.) is a transfer from UW-Superior.

LAST TIME OUT

The Gustavus men's hockey team is looking to bounce back from a sweep suffered at the hands of conference-leader St. Thomas last weekend. St. Thomas used a pair of strong third periods on both nights to come away with a 4-2 win on Friday in Mendota Heights and a 4-1 victory on Saturday in St. Peter.

Once St. Thomas's Connor McBride put the Tommies up 2-0 late in the second period on Friday, Gustavus's Corey Leivermann brought the Gusties charging back with the first of his two goals at the 18:32 mark of the frame. Early in the third period, Leivermann scored the equalizer to tie the game at 2-2 with over 15 minutes left in regulation. With less than three minutes remaining, Tommie Alex Niestrom scored the game-winning goal and then later iced the game with an empty-netter.

After a scoreless first period on Friday night, St. Thomas was once again able to get on the scoreboard first with a goal by Cory Kapeller halfway through the second period. Less than five minutes later, Leivermann knotted the game at 1-1 with a power play goal at 14:46. From there it was all St. Thomas, as the Tommies' used three third period goals to cruise to the 4-1 win.

John McLean was between the pipes for both losses, dropping to 12-5-4 on the year. He stopped 17-of-20 shots on Friday and 18-of-22 shots on Saturday.

THE SERIES

This weekend's games will be the 76th and 77th meetings between Gustavus and Bethel in men's hockey. Gustavus holds the advantage in the all-time series with a record of 52-22-1.

Gustavus and Bethel met earlier this season at the MIAC Showcase on Nov. 1 in the 2013-14 season-opener. Thanks to second period goals by Gustav Bengtson and Tyler Lopic, the Gusties were able to hold on for a 2-1 victory. John McLean made 11 of his 20 total saves in third period to allow Gustavus the season-opening win.

SCOUTING THE ROYALS

With the MIAC Playoffs out of reach, the Bethel men's hockey team enters the weekend looking to spoil Gustavus's chances at earning the No. 2 seed. After defeating Saint Mary's 4-3 on Jan. 18, the Royals have dropped their last seven games. Most recently, Bethel suffered a sweep at the hands of Saint John's by the scores of 5-1 on Friday in St. Cloud and 3-1 on Saturday in Blaine.

Bethel has had trouble scoring goals within conference play this season, averaging just 1.71 goals per game (8th/MIAC). Defensively, the Royals allow 3.07 goals per game (7th/MIAC) to their league foes. Leading the Royal offense are sophomore forwards Brock Raffaele and Travis Payne. Raffaele has 20 points on eight goals and 12 assists, while Payne has



2013-14 GUSTAVUS ADOLPHUS MEN'S HOCKEY GAME NOTES

2013-14 MIAC STANDINGS

SCHOOL	POINTS	MIAC	OVERALL
St. Thomas ^{*^}	39	12-0-2	18-3-2
Gustavus [^]	32	10-3-1	13-6-4
St. Olaf [^]	27	8-3-3	10-9-4
Saint John's [^]	26	9-5-0	15-8-0
Concordia	23	6-6-4	12-8-5
Augsburg	18	5-6-3	12-8-3
Saint Mary's	13	4-10-0	8-14-1
Bethel	9	2-11-1	3-18-2
Hamline	5	1-13-0	2-20-1

* Regular Season Champion
^ MIAC Playoff qualifier

AROUND THE MIAC

Friday, Feb. 21

Saint Mary's at Hamline | 7:05 p.m.
Bethel at Gustavus | 7:05 p.m.
St. Olaf at Augsburg | 7:05 p.m.
Saint John's at St. Thomas | 7:30 p.m.

Saturday, Feb. 22

Hamline at Saint Mary's | 7:00 p.m.
Gustavus at Bethel | 7:00 p.m.
St. Thomas at Saint John's | 7:00 p.m.
Augsburg at St. Olaf | 7:00 p.m.

USCHO.COM DIII MEN'S POLL

No.	Team	Record	Points	Last Poll
1	St. Norbert (20)	21-3-1	300	1
2	Adrian	20-1-4	275	2
3	Wisconsin-Stevens Point	18-3-2	262	4
4	Plattsburgh	18-3-2	212	6
5	St. Thomas	18-3-2	202	7
6	Wisconsin-Eau Claire	16-6-1	195	3
7	Norwich	17-5-3	190	8
8	Babson	19-4-2	175	5
9	Trinity	18-4-0	153	10
10	Wisconsin-River Falls	14-6-3	110	11
11	Geneseo	18-5-0	74	NR
12	Oswego	15-6-2	56	9
13	Utica	14-5-4	54	15
14	Williams	13-6-3	43	12
15	Gustavus Adolphus	13-6-4	42	13

PAIRWISE COMPARISON: WEST

No.	Team	GP	W-L-T	Win%	Win% Rk
1	St. Norbert*	25	21-3-1	0.8600	1
2	Adrian*	20	15-1-4	0.8500	2
3	Wisconsin-Stevens Point*	23	18-3-2	0.8261	3
4	St. Thomas*	23	18-3-2	0.8261	3
5	Wisconsin-Eau Claire*	23	16-6-1	0.7174	5
6	Wisconsin-River Falls	23	14-6-3	0.6739	6
7	Gustavus Adolphus*	23	13-6-4	0.6522	7
8	St. John's	23	15-8-0	0.6522	7
9	St. Scholastica	25	13-8-4	0.6000	9
10	Augsburg	23	12-8-3	0.5870	10
11	Lake Forest	24	13-10-1	0.5625	12
12	Concordia (Minn.)	25	12-8-5	0.5800	11
13	St. Olaf	23	10-9-4	0.5217	13

GAME NOTES

19 points on 10 goals and nine assists. Payne has scored four goals over Bethel's five games in February including a two-goal game against UW-Stevens Point on Feb. 1.

Getting the majority of minutes (1083:01) in goal has been sophomore Steven Bolton. Bolton is 3-13-2 overall with a .914 save percentage and a 3.05 goals against average. Sophomore Matt Rowe was in goal for last Saturday's loss to Saint John's after stopping 27-of-30 shots. Rowe is now 0-2-0 with a .904 save percentage and a 3.52 goals against average.

KILL OR BE KILLED

Despite last weekend's sweep, Gustavus's penalty killing unit continued to stay hot. The Gusties did a good job staying out of the penalty box all weekend against the Tommies, shutting them down on both their power play chances. Gustavus has now killed 27 straight power plays and ranks first in penalty kill percentage within league play at 91.1-percent. Bethel ranks seventh within MIAC play on the power play at 12.3-percent (7-57).

STILL STREAKING

Senior forward Corey Leivermann continued to prove to be one of the conference's top goal-scorers last weekend with a total of three goals against St. Thomas. Leivermann brought Gustavus back from a 2-0 deficit with a pair of goals on Friday night, then tied the game at 1-1 with a goal in the second period on Saturday night.

The local product hailing from North Mankato has now hit the scoresheet in nine straight games, recording 13 points (8G, 5A) over that time-span. Leivermann leads the team and ranks third in the MIAC in scoring with 27 points off of 16 goals and 11 assists. His 16 goals is tied for the league-lead, while his 11 goals inside conference play is also tops in the category. Friday's two-goal performance was the senior captain's third of the season.

SENIOR SEND OFF

As is tradition at Gustavus, the final home game of the regular season is designated at Senior Night and a special tribute is made to those seniors who have dedicated themselves to the Gustavus Adolphus men's hockey program. On Friday night, Head Coach Brett Petersen will honor seniors Gustav Bengtson, Alex Gallen, Corey Leivermann, Zach May, Joey Olson, Adam Smyth, and Patrick Sullivan. Over the past four seasons, Gustavus has compiled a record of 62-31-14 (.644) overall and 35-19-8 (.629) in the MIAC. The Gusties have qualified for the MIAC Playoffs the three previous seasons and have made it to the MIAC Playoff Championship the past two seasons, winning the title in 2012 with a 4-2 victory over St. Olaf.

PLAYOFF PUSH

With six points last weekend, St. Thomas clinched the 2013-14 MIAC Championship. Heading into this weekend, Gustavus needs just one point to secure the No. 2 seed in the MIAC Playoffs. It would be Gustavus's best finish in the league standings since the 2011-12 season when the Gusties took second with a record of 8-5-3.

HOME VS. ROAD SCORING

The Gustavus men's hockey team's offense has proven to be more potent on the road rather than on its home ice. In their 10 games at Don Roberts Ice Rink, Gustavus averages 2.3 goals per game. In the squad's 13 games away from St. Peter, Gustavus averages 3.53 goals.

IN THE POLLS

Gustavus slipped two spots to a No. 15 ranking in the most recent USCHO.com Division III Men's Poll released Monday. The Gusties remain ranked No. 15 on the D3hockey.com Division III Top 15 Poll - a position they have held for three weeks.

BY THE NUMBERS

25.2 - The number of shots per game Gustavus is allowing this season. Within conference play, the Gusties are allowing 23.5 shots. On the offensive end, the Gusties average 32.9 shots per game overall and 31.7 shots per game in the MIAC.

6-3-1 - Gustavus's record in regular season finales over the previous ten seasons. The Gusties' last loss in the final game of the regular season came on Feb. 17, 2007 to Saint John's by the score of 6-5 in overtime.



2013-14 GUSTAVUS ADOLPHUS MEN'S HOCKEY GAME NOTES

HEAD COACH BRETT PETERSEN

14th Season

195-147-32 at Gustavus

Office: 507-933-7615

Email: bpeters4@gustavus.edu



Brett Petersen is currently in his 14th season as the head coach of the Gustavus Adolphus men's hockey team.

Despite another late-season surge that saw the Gustavus men's hockey team go 10-2-2 after the holiday break, the Gusties missed out on a trip to the NCAA Tournament after falling to Saint John's 3-2 in the MIAC Playoff Championship. Gustavus, who began the year 0-4-0 in the MIAC, earned the fourth seed in the MIAC Playoffs after a late push in conference play over January and February. In the conference tournament, the Gusties defeated St. Olaf (3-2) in the first round and St. Thomas (1-0) in the semifinals to earn a trip to the championship game for the fourth time in the last five seasons. Petersen's club finished 17-8-3 overall and 9-5-2 in the MIAC.

In his 13-plus year tenure behind the Gustavus bench, Petersen has compiled a 195-147-32 overall record. His 195 wins at Gustavus ranks second behind legendary coach Don Roberts. He has been named MIAC Coach of the Year twice, once in 2001-02 after helping the Gusties make the jump from ninth place the year before to a second place finish in the conference, and again in 2009-10 after leading the Gusties to their first MIAC Title since 1993. While at Gustavus, Petersen has worked with 16 All-Conference players, three MIAC Player of the Year recipients, seven All-Americans and one National Player of the Year (David Martinson, 2010).

Within MIAC play, Gustavus holds a record 122-79-21 during the Petersen era. The Gusties have earned a trip to the MIAC Playoffs 12 straight seasons and have advanced to the MIAC Playoff Championship a total of five times under Petersen. Since the turn of the century, Gustavus has qualified for the NCAA Division III Tournament three times in 2009, 2010, and 2012. The Gusties advanced all the way to the NCAA Championship in 2009 where they fell to Neumann 4-1 at Herb Brooks Arena in Lake Placid, N.Y.

Petersen, a Roseville, Minnesota native, started his coaching career with the St. Paul Vulcans of the United States Hockey League (USHL) from 1992-1994. He was named assistant coach at St. Cloud State University of the Western Collegiate Hockey Association (WCHA) in the spring of 1994. During his six years at St. Cloud State, he coordinated the recruiting process for head coach Craig Dahl, while also being closely involved with practice planning, player development and bench coaching.

In the classroom, Petersen received his Bachelor of Science degree in business administration from the University of Denver in 1992 and his Master of Science degree in athletic administration in 2000 from St. Cloud State. He was a four-year letter winner in hockey while at Denver and was named to the WCHA All-Academic team for three years. Petersen served as the team's assistant captain during his junior and senior seasons.

Petersen had the opportunity to represent USA Hockey on several difference occasions during his playing career including the U.S. Olympic Festival in Oklahoma City in 1990 and the World University Games in Sapporo, Japan in 1991. He was drafted by the Calgary Flames of the National Hockey League (NHL), but did not play professional hockey.

Along with this coaching duties at Gustavus, Petersen's responsibilities include managing Lund Arena, the College's multi-purpose facility that houses the ice sheet from October through March for team practices and games. The facility is then used for physical education classes, concerts and conventions the rest of the year.

Brett lives in St. Peter with his wife, Linda, and their daughters, Katherine and Natalie.

THE PETERSEN FILE

Hometown	Coaching	Year	Overall	MIAC	Finish
• Roseville, Minnesota	• 1992-94 - Assistant Coach, St. Paul Vulcans (USHL)	2000-01	6-16-3	3-11-2	9th
		2001-02	14-9-4	9-4-4	2nd
Education	• 1994-00 - Assistant Coach, St. Cloud State (WCHA)	2002-03	14-12-1	8-7-1	4th
		2003-04	12-11-3	9-5-2	3rd
• Bachelor's Degree: Business Administration (Denver `92)	Coaching Awards	2004-05	10-14-1	7-8-1	T-5th
		2005-06	14-11-1	9-7-0	5th
• Master's Degree: Sport Administration (St. Cloud State `00)	• MIAC Coach of the Year - 2002, 2010	2006-07	11-13-2	9-6-1	5th
		2007-08	13-12-1	10-6-0	4th
Family	NCAA Appearances	2008-09	19-11-0	10-6-0	T-2nd
		2009-10	20-7-2	12-2-2	1st
• Wife, Linda; daughters Katherine and Natalie.	MIAC Titles	2010-11	15-10-2	8-6-2	T-4th
		2011-12	17-7-5	8-5-3	2nd
		2012-13	17-8-3	9-5-2	4th
		2013-14	13-6-4	10-3-1	
		TOTALS	195-147-32	122-79-21	



2013-14 GUSTAVUS ADOLPHUS MEN'S HOCKEY GAME NOTES

GAME 2013-14 GUSTAVUS TEAM SUPERLATIVES

Largest Margin of Victory: 4 (2x), last 5-1 win vs. Saint Mary's (Jan. 25)

Largest Margin of Defeat: 4, 8-4 vs. UW-Stevens Point (Nov. 8)

Most Goals, Game: 6, 6-6 tie vs. Lawrence (Nov. 29)

Most Goals, 1st Period: 3 (2x), most recent 4-1 win vs. Saint John's (Feb. 1)

Most Goals, 2nd Period: 3, 6-6 tie vs. Lawrence (Nov. 29)

Most Goals, 3rd Period: 2, (9x), most recent 2-2 vs. UW-River Falls (Feb. 7)

Most Goals Allowed, 1st Period: 3, 8-4 loss vs. UW-Stevens Point (Nov. 8)

Most Goals Allowed, 2nd Period: 3 (2x), most recent 6-6 tie vs. Lawrence (Nov. 29)

Most Goals Allowed, 3rd Period: 3, 4-1 loss vs. St. Thomas (Feb. 15)

Most Shots, Game: 62, 6-6 tie vs. Lawrence (Nov. 29)

Most Shots, 1st Period: 21, 4-1 win vs. Saint John's (Feb. 1)

Most Shots, 2nd Period: 23, 6-6 tie vs. Lawrence (Nov. 29)

Most Shots, 3rd Period: 17 (2x), most recent 6-6 tie vs. Lawrence (Nov. 29)

Most Shots, OT: 6, 2-2 tie vs. St. Olaf (Dec. 7)

Most Shots Allowed, Game: 37, 6-6 tie vs. Lawrence (Nov. 29)

Most Shots Allowed, 1st Period: 17, 8-4 loss vs. UW-Stevens Point (Nov. 8)

Most Shots Allowed, 2nd Period: 16, 6-6 tie vs. Lawrence (Nov. 29)

Most Shots Allowed, 3rd Period: 15, 4-1 win vs. Saint John's (Feb. 1)

Most Shots Allowed, OT: 3 (2x), most recent 2-2 vs. UW-River Falls (Feb. 7)

Fewest Shots, Game: 16, 5-2 win vs. Hamline (Nov. 22)

Fewest Shots, Regulation Period: 2, first period of 3-1 win vs. UW-Stout (Nov. 9)

Fewest Shots, 1st Period: 2, 3-1 win vs. UW-Stout (Nov. 9)

Fewest Shots, 2nd Period: 3, 5-1 win vs. Saint Mary's (Jan. 25)

Fewest Shots, 3rd Period: 5 (2x), most recent 4-1 win vs. Saint Mary's (Jan. 24)

Fewest Shots, OT: 1 (2x), most recent 2-2 vs. UW-River Falls (Feb. 7)

Fewest Shots Allowed, Game: 20, 4-1 vs. Saint Mary's (Jan. 24)

Fewest Shots Allowed, Regulation Period: 1, second period of 2-1 win vs. Bethel (Nov. 1)

Fewest Shots Allowed, 1st Period: 4, 5-1 win vs. Hamline (Nov. 23)

Fewest Shots Allowed, 2nd Period: 1, 2-1 win vs. Bethel (Nov. 1)

Fewest Shots Allowed, 3rd Period: 3, (2x), most recent 3-1 loss vs. Concordia (Nov. 15)

Fewest Shots Allowed, OT: 2, 2-2 tie vs. St. Olaf (Dec. 7)

Most PIM, Game: 26, 6-6 tie vs. Lawrence (Nov. 29)

Most Opponent PIM, Game: 48, 6-6 tie vs. Lawrence (Nov. 29)

Most Combined PIM: 74, 6-6 tie vs. Lawrence (Nov. 29)

Fewest PIM, Game: 2, 4-2 loss vs. St. Thomas (Feb. 14)

Fewest Opponent PIM, Game: 2 (2x), most recent 2-1 victory vs. Saint John's (Jan. 31)

Fewest Combined PIM, Game: 6 (2x), most recent 4-2 loss vs. St. Thomas (Feb. 14)

Most PPG, Game: 2, 4-1 win vs. Saint John's (Feb. 1)

Best PP, Game: 2-3, 4-1 win vs. Saint John's (Feb. 1)

Most PP Opportunities, Game: 7 (2x), (0-7), most recent 6-6 tie vs. Lawrence (Nov. 29)

Best PK: 6-6 (3x), most recent 5-1 vs. Saint Mary's (Jan. 25)

Most Opponent PPG, Game: 2 (3x), (2-4), most recent 2-2 tie vs. St. Olaf (Dec. 7)

Most Opponent PP Opportunities, Game: 7 (2x), most recent 6-6 tie vs. Lawrence (Nov. 29)

Best Opponent PK: 7-7 (2x), most recent 6-6 tie vs. Lawrence (Nov. 29)



2013-14 GUSTAVUS ADOLPHUS MEN'S HOCKEY GAME NOTES

2013-14 GUSTAVUS MEN'S HOCKEY ROSTER

<u>NO.</u>	<u>NAME</u>	<u>YR</u>	<u>POS</u>	<u>HGT</u>	<u>WGT</u>	<u>HOMETOWN</u>	<u>HIGH SCHOOL</u>	<u>LAST TEAM</u>
1	John McLean	So.	G	6-8	220	Eagan, Minn.	Minnehaha Academy	Wisconsin Wilderness (SIJHL)
2	Sam Smith	Jr.	D	5-11	205	Vancouver, B.C.	Flower Mound	Texas Valley Sr. Warriors (EJHL)
3	Jared Docken	Fr.	D	5-10	175	Northfield, Minn.	Northfield	Brookings Blizzard (NAHL)
4	Jack Walsh ^C	Jr.	F	6-3	200	Mahtomedi, Minn.	Hill-Hurray	Austin Bruins (NAHL)
5	Drew Aspinwall	Fr.	D	6-1	195	Maple Grove, Minn.	Maple Grove	Fresno Monsters (NAHL)
6	Tyler Lopic	Jr.	F	6-2	200	New Prague, Minn.	New Prague	Wisconsin (WCHA)
7	Schyler Adams	Jr.	F	5-9	185	New Prague, Minn.	New Prague	Owatonna Express (NAHL)
8	Tony Paulson	Fr.	F	5-10	165	Maple Grove, Minn.	Maple Grove	North Iowa Bulls (NA3HL)
9	Corey Leivermann ^C	Sr.	F	5-11	180	North Mankato, Minn.	Mankato West	Fargo Force (USHL)
10	Gavin Tufte	So.	F	6-0	220	Blaine, Minn.	Blaine	UW-Stout (WIAC)
11	Joey Olson	Sr.	D	6-3	210	Warroad, Minn.	Warroad	Warroad High School
14	Zach May	Sr.	F	5-10	170	Prior Lake, Minn.	Burnsville	Albert Lea Thunder (NAHL)
15	Adam Smyth	Sr.	F	6-2	200	Burnsville, Minn.	Burnsville	Burnsville High School
16	Darren Lopic	So.	F	6-2	210	New Prague, Minn.	New Prague	Odessa Jackalopes (NAHL)
17	Sam Akins	Fr.	F	6-2	205	Stowe, Vt.	Northwood	Dallas Ice Jets (WSHL)
18	Gustav Bengtson	Sr.	F	5-10	185	Sollentuna, Sweden	Spring Creek Academy	Texas Tornado (NAHL)
19	Sam Majka	Fr.	F	6-0	190	Wayzata, Minn.	Wayzata	Coquitlam Express (BCHL)
20	Nate Paulsen	Jr.	D	6-2	195	La Habra, Calif.	La Habra	Wisconsin Wilderness (SIJHL)
21	Alex Gallen	Sr.	D	5-10	190	Hingham, Mass.	Cushing Academy	Mercyhurst (Atlantic)
22	Andy Pearson	Jr.	F	5-10	180	Burnsville, Minn.	Burnsville	Alaska Avalanche (NAHL)
23	Blake Barnes	Fr.	D	5-11	175	Broken Arrow, Okla.	Shattuck-St. Mary's	Texas Valley Jr. Warriors (EJHL)
24	Cory Ellis	Jr.	F	6-2	215	St. Paul, Minn.	St. Paul Johnson	Austin Bruins (NAHL)
25	Ross Kovacs	Fr.	D	6-3	215	Dickinson, N.D.	Dickinson	Hawkesbury Hawks (CCHL)
26	Blake Schammel	Jr.	F	5-10	190	Red Wing, Minn.	Red Wing	Bismarck Bobcats (NAHL)
27	Joncarlo Westerlund	Fr.	F	5-11	185	Baudette, Minn.	Lake of the Woods	Dallas Ice Jets (WSHL)
30	Patrick Sullivan	Sr.	G	6-0	195	Kelowna, B.C.	CSS	St. Scholastica (NCHA)
35	Erik Johnson	Fr.	G	6-1	180	Rice, Minn.	Suak Rapids-Rice	Rochester Ice Hawks (MNJHL)

HEAD COACH: Brett Petersen (14th Season)

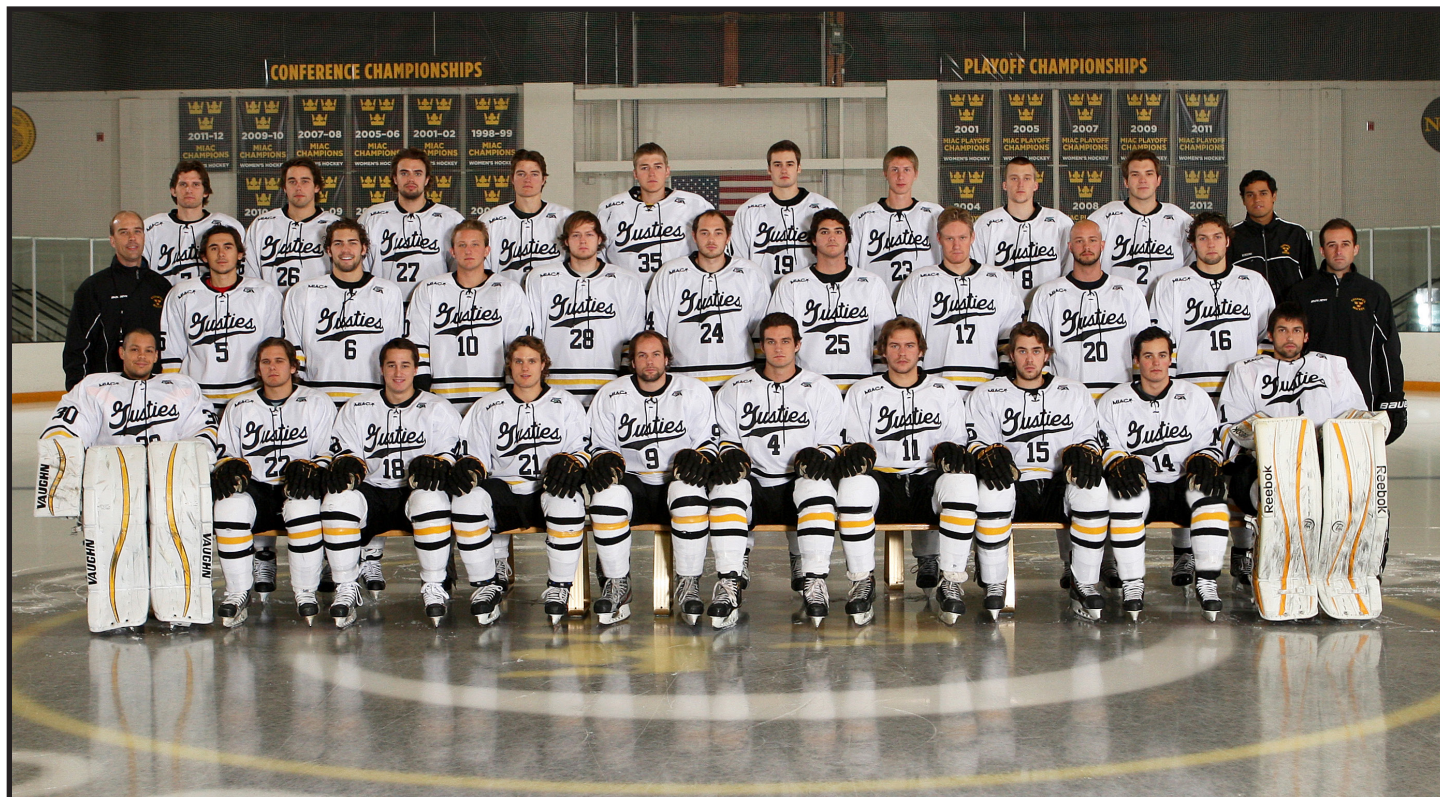
ASSISTANT COACH: David Martinson

C: Denotes Captain



2013-14 GUSTAVUS ADOLPHUS MEN'S HOCKEY GAME NOTES

2013-14 GUSTAVUS MEN'S HOCKEY PRONUNCIATION GUIDE



FRONT ROW (L TO R) | Patrick Sullivan, Andy Pearson, Gustav Bengtson, Alex Gallen, Cory Leivermann, Jack Walsh, Joey Olson, Adam Smyth, Zach May, John McLean

SECOND ROW (L TO R) | Head Coach Brett Petersen, Drew Aspinwall, Tyler Lopic, Gavin Tufte, Alec Austin, Cory Ellis, Ross Kovacs, Sam Akins, Nate Paulsen, Darren Lopic, Assistant Coach David Martinson

TOP ROW (L TO R) | Schyler Adams, Blake Schammel, Joncarlo Westerlund, Jared Docken, Erik Johnson, Sam Majka, Blake Barnes, Tony Paulson, Sam Smith, Student Assistant Juan Luis Chu

PRONUNCIATION GUIDE

- 7 Schyler Adams (SKY-ler)
- 10 Gavin Tufte (TUFF-tee)
- 17 Sam Akins (A (as in acorn)-kins)
- 18 Gustav Bengtson (GOOSE-tahv) (BENGs-ton)
- 19 Sam Majka (MAY-kuh)
- 26 Blake Schammel (SHAM-el)



2013-14 GUSTAVUS ADOLPHUS MEN'S HOCKEY GAME NOTES

2013-14 INDIVIDUAL GAME HIGHS



No. 1

John McLean

Fewest Goals: 1 (10x), last Feb. 1 vs. Saint John's

Most Saves: 31, Nov. 29 vs. Lawrence

Most Minutes: 65 (4x), last Feb. 7 vs. UW-River Falls

Winning-Streak: N/A



No. 5

Drew Aspinwall

Goals: 1, Nov. 30 vs. Marian

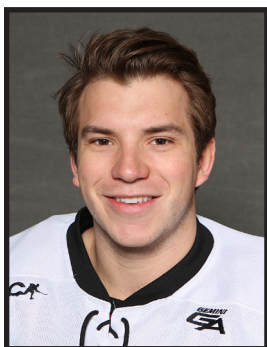
Assists: 2, Jan. 25 vs. Saint Mary's

Points: 2, Jan. 25 vs. Saint Mary's

Plus/Minus: +3 (2x), last Jan. 25 vs. Saint Mary's

PIM: 4, Jan. 10 vs. Lake Forest

Shots On Goal: 4, Dec. 7 vs. St. Olaf



No. 2

Sam Smith

Goals: 1, Jan. 17 vs. Augsburg

Assists: 1 (3x), last Jan. 17 vs. Augsburg

Points: 2, Jan. 17 vs. Augsburg

Plus/Minus: +2, Jan. 17 vs. Augsburg

PIM: 4, Jan. 18 vs. Augsburg

Shots On Goal: 2 (2x), last Feb. 7 vs. UW-River Falls



No. 6

Tyler Lopic

Goals: 1 (5x), last Jan. 31 vs. Saint John's

Assists: 2, Nov. 8 vs. UW-Stevens Pt.

Points: 3, Nov. 8 vs. UW-Stevens Pt.

Plus/Minus: +2 (2x), last Jan. 18 vs. Augsburg

PIM: 4 (3x), last Nov. 29 vs. Lawrence

Shots On Goal: 11, Nov. 29 vs. Lawrence



No. 3

Jared Docken

Goals: 1, Nov. 16 vs. Concordia

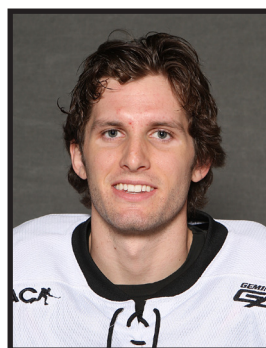
Assists: 1 (5x), last Feb. 14 vs. St. Thomas

Points: 1 (6x), last Feb. 14 vs. St. Thomas

Plus/Minus: +2, Dec. 7 vs. St. Olaf

PIM: 5, Dec. 7 vs. St. Olaf

Shots On Goal: 3 (3x), last Jan. 25 vs. Saint Mary's



No. 7

Schyler Adams

Goals: 1, Nov. 3 vs. St. Thomas

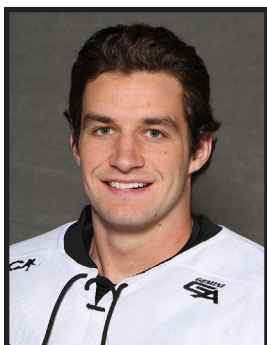
Assists: 1 (2x), last Nov. 16 vs. Concordia

Points: 1 (3x), last Nov. 16 vs. Concordia

Plus/Minus: +1 (3x), last Nov. 16 vs. Concordia

PIM: 2 (2x), last Nov. 15 vs. Concordia

Shots On Goal: 5, Nov. 1 vs. Bethel



No. 4

Jack Walsh

Goals: 1 (2x), last Nov. 29 vs. Lawrence

Assists: 3, Nov. 8 vs. UW-Stevens Pt.

Points: 3, Nov. 8 vs. UW-Stevens Pt.

Plus/Minus: +4, Nov. 8 vs. UW-Stevens Pt.

PIM: 4, Nov. 1 vs. Bethel

Shots On Goal: 4 (4x), last Jan. 10 vs. Lake Forest



No. 8

Tony Paulson

Goals: 1, Nov. 30 vs. Marian

Assists: N/A

Points: 1, Nov. 30 vs. Marian

Plus/Minus: 0 (2x), last Nov. 30 vs. Marian

PIM: N/A

Shots On Goal: 2 (3x), last Feb. 7 vs. UW-River Falls



2013-14 GUSTAVUS ADOLPHUS MEN'S HOCKEY GAME NOTES

2013-14 INDIVIDUAL GAME HIGHS



No. 9

Corey Leivermann

Goals: 2 (3x), last Feb. 14 vs. St. Thomas

Assists: 2, Nov. 8 vs. UW-Stevens Pt.

Points: 4, Nov. 8 vs. UW-Stevens Pt.

Plus/Minus: +3, Nov. 22 vs. Hamline

PIM: 12, Jan. 18 vs. Augsburg

Shots On Goal: 9, Nov. 16 vs. Concordia



No. 15

Adam Smyth

Goals: 2 (2x), last Jan. 10 vs. Lake Forest

Assists: 2 (2x), last Jan. 25 vs. Saint Mary's

Points: 2 (4x), last Jan. 31 vs. Saint John's

Plus/Minus: +3, Nov. 23 vs. Hamline

PIM: 2 (5x), last Jan. 17 vs. Augsburg

Shots On Goal: 10, Nov. 16 vs. Concordia



No. 10

Gavin Tufte

Goals: 2, Jan. 25 vs. Saint Mary's

Assists: 2, Nov. 3 vs. St. Thomas

Points: 2 (2x), last Jan. 25 vs. Saint Mary's

Plus/Minus: +2, Jan. 25 vs. Saint Mary's

PIM: 4 (2x), last Nov. 29 vs. Lawrence

Shots On Goal: 3 (4x), last Feb. 7 vs. UW-River Falls



No. 16

Darren Lopic

Goals: 2, Nov. 22 vs. Hamline

Assists: 1 (2x), last Nov. 16 vs. Concordia

Points: 2, Nov. 22 vs. Hamline

Plus/Minus: +1 (4x), last Jan. 25 vs. Saint Mary's

PIM: 4 (3x), last Jan. 25 vs. Saint Mary's

Shots On Goal: 3 (3x), last Feb. 1 vs. Saint John's



No. 11

Joey Olson

Goals: N/A

Assists: 2, Nov. 22 vs. Hamline

Points: 2, Nov. 22 vs. Hamline

Plus/Minus: +2 (3x), last Jan. 17 vs. Augsburg

PIM: 2 (2x), last Dec. 6 vs. St. Olaf

Shots On Goal: 2 (2x), last Feb. 15 vs. St. Thomas



No. 17

Sam Akins

Goals: N/A

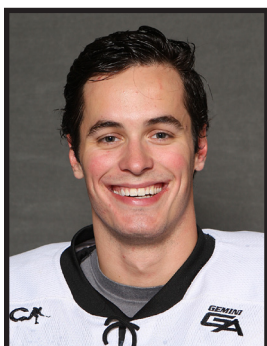
Assists: N/A

Points: N/A

Plus/Minus: 0 (3x), last Jan. 11 vs. Adrian

PIM: N/A

Shots On Goal: 1, Jan. 18 vs. Augsburg



No. 14

Zach May

Goals: 1, Nov. 29 vs. Lawrence

Assists: 2, Nov. 23 vs. Hamline

Points: 2 (2x), last Nov. 29 vs. Lawrence

Plus/Minus: +3, Nov. 9 vs. UW-Stout

PIM: 15, Nov. 16 vs. Concordia

Shots On Goal: 5 (2x), last Feb. 15 vs. St. Thomas



No. 18

Gustav Bengston

Goals: 2, Jan. 25 vs. Saint Mary's

Assists: 2, Jan. 18 vs. Augsburg

Points: 2 (3x), Jan. 25 vs. Saint Mary's

Plus/Minus: +2 (2x), last Jan. 18 vs. Augsburg

PIM: 2 (4x), last Jan. 17 vs. Augsburg

Shots On Goal: 7, Dec. 7 vs. St. Olaf



2013-14 GUSTAVUS ADOLPHUS MEN'S HOCKEY GAME NOTES

2013-14 INDIVIDUAL GAME HIGHS

**No. 19**

Sam Majka

Goals: N/A

Assists: 1 (4x), last Jan. 24 vs. Saint Mary's

Points: 1 (4x), last Jan. 24 vs. Saint Mary's

Plus/Minus: +1 (5x), last Jan. 25 vs. Saint Mary's

PIM: 4, Nov. 22 vs. Hamline

Shots On Goal: 6, Nov. 22 vs. Hamline

**No. 23**

Blake Barnes

Goals: N/A

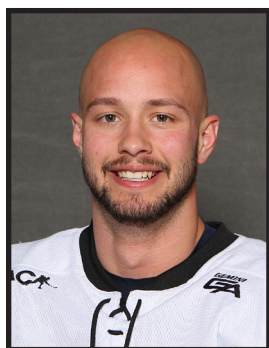
Assists: N/A

Points: N/A

Plus/Minus: +1, Nov. 16 vs. Concordia

PIM: 2, Jan. 11 vs. Adrian

Shots On Goal: 3, Nov. 29 vs. Lawrence

**No. 20**

Nate Paulsen

Goals: 2, Nov. 29 vs. Lawrence

Assists: 1 (3x), last Feb. 1 vs. Saint John's

Points: 2, Nov. 29 vs. Lawrence

Plus/Minus: +2 (2x), last Jan. 24 vs. Saint Mary's

PIM: 2 (6x), last Jan. 25 vs. Saint Mary's

Shots On Goal: 5, Nov. 29 vs. Lawrence

**No. 24**

Cory Ellis

Goals: 1 (2x), last Nov. 22 vs. Hamline

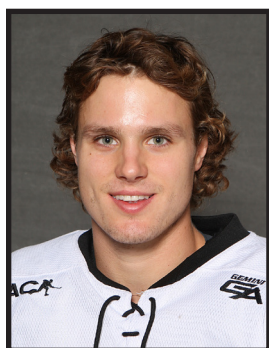
Assists: 1 (2x), last Jan. 24 vs. Saint Mary's

Points: 2, Nov. 22 vs. Hamline

Plus/Minus: +1 (6x), last Jan. 25 vs. Saint Mary's

PIM: N/A

Shots On Goal: 2, Jan. 24 vs. Saint Mary's

**No. 21**

Alex Gallen

Goals: 1 (3x), last Jan. 18 vs. Augsburg

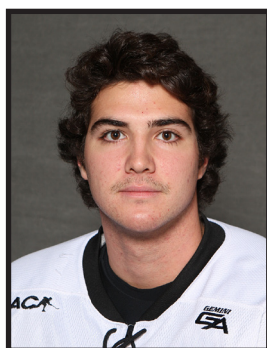
Assists: 1 (2x), last Feb. 15 vs. St. Thomas

Points: 1 (5x), last Feb. 15 vs. St. Thomas

Plus/Minus: +3 (2x), last Nov. 29 vs. Lawrence

PIM: 4, Nov. 3 vs. St. Thomas

Shots On Goal: 3 (4x), last Jan. 24 vs. Saint Mary's

**No. 25**

Ross Kovacs

Goals: N/A

Assists: N/A

Points: N/A

Plus/Minus: 0 (2x), last Nov. 22 vs. Hamline

PIM: N/A

Shots On Goal: 1, Jan. 10 vs. Lake Forest

**No. 22**

Andy Pearson

Goals: 1 (4x), last Feb. 1 vs. Saint John's

Assists: 2 (2x), last Jan. 25 vs. Saint Mary's

Points: 2 (3x), last Jan. 25 vs. Saint Mary's

Plus/Minus: +2 (2x), last Jan. 17 vs. Augsburg

PIM: N/A

Shots On Goal: 6, Jan. 18 vs. Augsburg

**No. 26**

Blake Schammel

Goals: 1, Nov. 23 vs. Hamline

Assists: 1 (3x), last Feb. 1 vs. Saint John's

Points: 1 (4x), last Feb. 1 vs. Saint John's

Plus/Minus: +1 (3x), last Feb. 1 vs. Saint John's

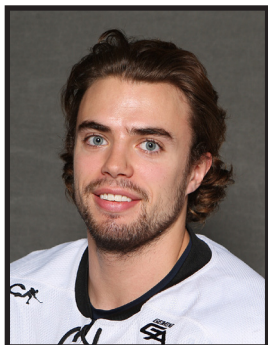
PIM: 4, Nov. 29 vs. Lawrence

Shots On Goal: 4, Feb. 1 vs. Saint John's



2013-14 GUSTAVUS ADOLPHUS MEN'S HOCKEY GAME NOTES

2013-14 INDIVIDUAL GAME HIGHS

**No. 27**

Joncarlo Westerlund

Goals: 1, Jan. 24 vs. Saint Mary's

Assists: N/A

Points: 1, Jan. 24 vs. Saint Mary's

Plus/Minus: +1 (2x), last Jan. 24 vs. Saint Mary's

PIM: N/A

Shots On Goal: 3 (3x), last Jan. 18 vs. Augsburg

**No. 35**

Erik Johnson

Fewest Goals: 2, Nov. 30 vs. Marian

Most Saves: 23, Nov. 30 vs. Marian

Most Minutes: 60, Nov. 30 vs. Marian

Winning-Streak: 1

**No. 30**

Patrick Sullivan

Fewest Goals: 5, Nov. 3 vs. St. Thomas

Most Saves: 16, Nov. 3 vs. St. Thomas

Most Minutes: 48:22, Nov. 3 vs. St. Thomas

Winning-Streak: 0





2013-14 GUSTAVUS ADOLPHUS MEN'S HOCKEY GAME NOTES

2013-14 COMBINED STATISTICS

Gustavus Adolphus Hockey Gustavus Adolphus Combined Team Statistics (as of Feb 20, 2014) All games

Date	Opponent	Score	Att.
Nov 01	vs Bethel	W 2-1	552
Nov 03	vs St. Thomas	L 3-5	503
Nov 08	at UW-Stevens Point	L 4-8	915
Nov 09	at UW-Stout	W 3-1	485
* Nov 15	CONCORDIA COLLEGE	L 1-3	741
* Nov 16	CONCORDIA COLLEGE	W 3-1	471
* Nov 22	HAMLIN UNIVERSITY	W 5-2	697
* Nov 23	at Hamline University	W 5-1	140
11/29/2013	at Lawrence University	Tot 6-6	428
11/30/2013	vs Marian University	W 3-2	174
* Dec 06	at St. Olaf	W 3-1	350
* Dec 07	ST. OLAF	Tot 2-2	892
Jan 10	LAKE FOREST COLLEGE	Tot 2-2	871
Jan 11	#1 ADRIAN COLLEGE	L 0-2	690
* Jan 17	AUGSBURG	W 3-1	596
* 01/18/14	at Augsburg	W 4-2	303
* Jan 24	SAINT MARY'S UNIV.	W 4-1	551
* Jan 25	at Saint Mary's Univ.	W 5-1	213
* Jan 31	SAINT JOHN'S	W 2-1	559
* Feb 01	at Saint John's	W 4-1	422
Feb 7	at #11 UW-River Falls	Tot 2-2	681
* Feb 14	at St. Thomas	L 2-4	460
* Feb 15	ST. THOMAS	L 1-4	555

TEAM STATISTICS	GAC	OPP
SHOT STATISTICS		
Goals-Shot attempts	69-757	54-580
Shot pct.	.091	.093
Goals/Game	3.0	2.3
Shots/Game	32.9	25.2
POWER PLAYS		
Goals-Power Plays	12-97	13-93
Conversion Percent	.124	.140
Shot Attempts	131	91
Shot Percent	.092	.143
GOAL BREAKDOWN		
Power Play	12	13
Short-handed	4	1
Empty net	1	2
Penalty	0	0
Unassisted	6	5
Overtime	0	0
Shootout	0	0
Delayed Penalty	0	0
PENALTIES		
Number	130	133
Minutes	298	340
Penalties/Game	5.7	5.8
Pen minutes/Game	13.0	14.8
SHOOTOUTS (Made-Att)	1-2	0-3

Record:	Overall	Home	Away	Neutral
ALL GAMES	13-6-4	5-3-2	6-2-2	2-1-0
CONFERENCE	10-3-1	5-2-1	5-1-0	0-0-0
NON-CONFERENCE	3-3-3	0-1-1	1-1-2	2-1-0

#	Player	gp	g	a	pts	sh	sh%	pen-min	pp	sh
9	Corey Leivermann	23	16	11	27	64	.250	17-42	4	2
15	Adam Smyth	23	11	8	19	115	.096	7-14	2	1
6	Tyler Lopic	21	5	10	15	36	.139	16-32	0	0
18	Gustav Bengtson	19	6	7	13	42	.143	4-8	2	0
22	Andy Pearson	23	4	8	12	51	.078	0-0	1	0
4	Jack Walsh	23	2	7	9	46	.043	8-16	1	1
20	Nate Paulsen	23	5	3	8	42	.119	6-12	0	0
5	Drew Aspinwall	23	1	6	7	25	.040	9-18	0	0
14	Zach May	17	1	6	7	24	.042	14-55	0	0
16	Darren Lopic	23	4	2	6	25	.160	9-18	1	0
3	Jared Docken	22	1	5	6	20	.050	4-11	0	0
21	Alex Gallen	23	3	2	5	26	.115	8-16	1	0
10	Gavin Tufte	19	3	2	5	25	.120	5-10	0	0
2	Smith, Sam	16	1	4	5	10	.100	6-12	0	0
11	Joey Olson	22	0	5	5	12	.000	2-4	0	0
24	Cory Ellis	18	2	2	4	10	.200	0-0	0	0
26	Blake Schammel	20	1	3	4	23	.043	6-12	0	0
19	Sam Majka	22	0	4	4	40	.000	4-8	0	0
7	Schlyer Adams	6	1	2	3	10	.100	2-4	0	0
8	Paulson, Tony	5	1	0	1	7	.143	0-0	0	0
27	Joncarlo Westerlund	10	1	0	1	13	.077	0-0	0	0
1	John McLean	22	0	1	1	0	.000	0-0	0	0
17	Akins, Sam	4	0	0	0	1	.000	0-0	0	0
28	Alec Austin	1	0	0	0	0	.000	0-0	0	0
23	Blake Barnes	5	0	0	0	2	.000	1-2	0	0
25	Ross Kovacs	4	0	0	0	1	.000	0-0	0	0
TM TEAM		5	0	0	0	87	.000	2-4	0	0
Total		23	69	98	167	757	.091	130-298	12	4
Opponents		23	54	82	136	580	.093	133-340	13	1

#	Goalie	gp	min	ga	gaavg	saves	save%	w-l-t
35	Erik Johnson	1	60:00	2	2.00	23	.920	1-0-0
1	John McLean	22	1285:59	45	2.10	487	.915	12-5-4
30	Patrick Sullivan	1	48:22	5	6.20	16	.762	0-1-0
TM EMPTY NET		5	5:39	2	-	0	.000	0-0-0
Total		23	1400:00	54	2.31	526	.907	13-6-4
Opponents		23	1400:00	69	2.96	688	.909	6-13-4

Attendance Summary	GAC	Opponent
Total	6623	4397
Dates/Avg Per Date	10/662	10/440
Neutral Site #/Avg	3/410	

Goals by Period	1st	2nd	3rd	Total
Gustavus Adolphus	23	18	28	69
Opponents	12	18	24	54

Saves by Period	1st	2nd	3rd	Total
Gustavus Adolphus	156	185	175	526
Opponents	209	241	225	688



2013-14 GUSTAVUS ADOLPHUS MEN'S HOCKEY GAME NOTES

2013-14 TEAM STATISTICS

Gustavus Adolphus Hockey
Gustavus Adolphus Overall Team Statistics (as of Feb 20, 2014)
All games

Overall: 13-6-4 Conf: 10-3-1 Home: 5-3-2 Away: 6-2-2 Neut: 2-1-0

TEAM STATISTICS	GAC	OPP
SHOT STATISTICS		
Goals-Shot attempts	69-757	54-580
Shot pct.	.091	.093
Goals/Game	3.0	2.3
Shots/Game	32.9	25.2
Assists	98	82
POWER PLAYS		
Goals-Power Plays	12-97	13-93
Conversion Percent	.124	.140
Shot Attempts	131	91
Shot Percent	.092	.143
GOAL BREAKDOWN		
Total Goals	69	54
Power Play	12	13
Short-handed	4	1
Empty net	1	2
Penalty	0	0
Unassisted	6	5
Overtime	0	0
Shootout	0	0
Delayed Penalty	0	0
PENALTIES		
Number	130	133
Minutes	298	340
Penalties/Game	5.7	5.8
Pen minutes/Game	13.0	14.8
Minor	109	110
Major	2	4
10-minute Misconduct	3	3
Game Misconduct	0	1
Gross Misconduct	0	0
Match	1	1
SHOOTOUTS (Made-Att)	1-2	0-3
ATTENDANCE		
Total	6623	4397
Dates/Avg Per Date	10/662	10/440
Neutral Site #/Avg	3/410	

Goals by Period	1st	2nd	3rd	OT	Total
Gustavus Adolphus	23	18	28	0	69
Opponents	12	18	24	0	54

Saves by Period	1st	2nd	3rd	OT	Total
Gustavus Adolphus	156	185	175	10	526
Opponents	209	241	225	13	688



2013-14 GUSTAVUS ADOLPHUS MEN'S HOCKEY GAME NOTES

2013-14 INDIVIDUAL STATISTICS

Gustavus Adolphus Hockey Gustavus Adolphus Overall Individual Statistics (as of Feb 20, 2014) All games

Overall: 13-6-4 Conf: 10-3-1 Home: 5-3-2 Away: 6-2-2 Neut: 2-1-0

##	Player	gp	Shots					+-	Penalties				Goals											blk
			g	a	pts	sh	sh%		pen-min	min	maj	oth	pp	sh	fg	gw	gt	ot	ht	pn	ua			
9	Corey Leivermann	23	16	11	27	64	.250	+8	17-42	14	0	1	4	2	3	1	0	0	0	0	3	0		
15	Adam Smyth	23	11	8	19	115	.096	+6	7-14	7	0	0	2	1	2	2	1	0	0	0	1	0		
6	Tyler Lopic	21	5	10	15	36	.139	+5	16-32	14	0	0	0	0	1	1	0	0	0	0	1	2		
18	Gustav Bengtson	19	6	7	13	42	.143	+5	4-8	3	0	0	2	0	5	0	0	0	0	0	0	0		
22	Andy Pearson	23	4	8	12	51	.078	+5	0-0	0	0	0	1	0	1	0	1	0	0	0	0	0		
4	Jack Walsh	23	2	7	9	46	.043	+10	8-16	7	0	0	1	1	0	1	0	0	0	0	0	1		
20	Nate Paulsen	23	5	3	8	42	.119	+4	6-12	6	0	0	0	0	0	1	1	0	0	0	1	1		
5	Drew Aspinwall	23	1	6	7	25	.040	+4	9-18	7	0	0	0	0	0	1	0	0	0	0	0	0		
14	Zach May	17	1	6	7	24	.042	+7	14-55	9	1	3	0	0	1	0	0	0	0	0	0	0		
16	Darren Lopic	23	4	2	6	25	.160	0	9-18	9	0	0	1	0	1	2	0	0	0	0	0	1		
3	Jared Docken	22	1	5	6	20	.050	+3	4-11	2	1	0	0	0	1	0	0	0	0	0	0	1		
21	Alex Gallen	23	3	2	5	26	.115	+2	8-16	7	0	0	1	0	1	2	0	0	0	0	0	1		
10	Gavin Tufte	19	3	2	5	25	.120	+2	5-10	3	0	0	0	0	0	1	0	0	0	0	0	1		
2	Smith,Sam	16	1	4	5	10	.100	+9	6-12	6	0	0	0	0	0	1	0	0	0	0	0	1		
11	Joey Olson	22	0	5	5	12	.000	+8	2-4	2	0	0	0	0	0	0	0	0	0	0	0	6		
24	Cory Ellis	18	2	2	4	10	.200	+2	0-0	0	0	0	0	0	0	0	0	0	0	0	0	1		
26	Blake Schammel	20	1	3	4	23	.043	-3	6-12	4	0	0	0	0	0	0	0	0	0	0	0	0		
19	Sam Majka	22	0	4	4	40	.000	-1	4-8	4	0	0	0	0	0	0	0	0	0	0	0	0		
7	Schyler Adams	6	1	2	3	10	.100	+3	2-4	2	0	0	0	0	0	0	0	0	0	0	0	0		
8	Paulson,Tony	5	1	0	1	7	.143	-2	0-0	0	0	0	0	0	0	0	0	0	0	0	0	0		
27	Joncarlo Westerlund	10	1	0	1	13	.077	-1	0-0	0	0	0	0	0	0	0	0	0	0	0	0	0		
1	John McLean	22	0	1	1	0	.000	0	0-0	0	0	0	0	0	0	0	0	0	0	0	0	0		
17	Akins,Sam	4	0	0	0	1	.000	-1	0-0	0	0	0	0	0	0	0	0	0	0	0	0	0		
28	Alec Austin	1	0	0	0	0	.000	0	0-0	0	0	0	0	0	0	0	0	0	0	0	0	0		
23	Blake Barnes	5	0	0	0	2	.000	0	1-2	1	0	0	0	0	0	0	0	0	0	0	0	0		
25	Ross Kovacs	4	0	0	0	1	.000	-2	0-0	0	0	0	0	0	0	0	0	0	0	0	0	2		
TM	TEAM	5	0	0	0	87	.000	0	2-4	2	0	0	0	0	0	0	0	0	0	0	0	161		
Total		23	69	98	167	757	.091	+73	130-298	109	2	4	12	4	16	13	3	0	0	0	6	179		
Opponents		23	54	82	136	580	.093	-	133-340	110	4	5	13	1	7	6	1	0	0	0	5	175		

##	Goalie	gp-gs	Goal average			Saves		Record				Goals allowed				
			minutes	ga	avg	saves	pct	w	l	t	sho	pp	sh	en	pen	sog
35	Erik Johnson	1-1	60:00	2	2.00	23	.920	1	0	0	0	0	0	0	0	0
1	John McLean	22-21	1285:59	45	2.10	487	.915	12	5	4	0	11	1	0	0	0
30	Patrick Sullivan	1-1	48:22	5	6.20	16	.762	0	1	0	0	2	0	0	0	0
TM	EMPTY NET	5-0	5:39	2	-	0	.000	0	0	0	0	0	0	2	0	0
Total		23-0	1400:00	54	2.31	526	.907	13	6	4	0	13	1	2	0	0
Opponents		23-0	1400:00	69	2.96	688	.909	6	13	4	1	12	4	1	0	0



2013-14 GUSTAVUS ADOLPHUS MEN'S HOCKEY GAME NOTES

2013-14 CATEGORY LEADERS

Gustavus Adolphus Hockey Gustavus Adolphus Category Leaders (as of Feb 20, 2014) All games

## Points	GP	G	A	Pts	Sh
9 Corey Leivermann	23	16	11	27	64
15 Adam Smyth	23	11	8	19	115
6 Tyler Lopic	21	5	10	15	36
18 Gustav Bengtson	19	6	7	13	42
22 Andy Pearson	23	4	8	12	51
4 Jack Walsh	23	2	7	9	46
20 Nate Paulsen	23	5	3	8	42
5 Drew Aspinwall	23	1	6	7	25
14 Zach May	17	1	6	7	24
16 Darren Lopic	23	4	2	6	25

## Goals	GP	G	A	Pts	Sh
9 Corey Leivermann	23	16	11	27	64
15 Adam Smyth	23	11	8	19	115
18 Gustav Bengtson	19	6	7	13	42
6 Tyler Lopic	21	5	10	15	36
20 Nate Paulsen	23	5	3	8	42
22 Andy Pearson	23	4	8	12	51
16 Darren Lopic	23	4	2	6	25
21 Alex Gallen	23	3	2	5	26
10 Gavin Tufte	19	3	2	5	25
4 Jack Walsh	23	2	7	9	46

## Power-Play Goals	GP	PPG
9 Corey Leivermann	23	4
18 Gustav Bengtson	19	2
15 Adam Smyth	23	2

## Short-Handed Goals	GP	SHG
9 Corey Leivermann	23	2
4 Jack Walsh	23	1
15 Adam Smyth	23	1

## Game-Winning Goals	GP	GWG
15 Adam Smyth	23	2
16 Darren Lopic	23	2
21 Alex Gallen	23	2

## Plus/Minus	GP	+/-
4 Jack Walsh	23	+10
2 Smith,Sam	16	+9
9 Corey Leivermann	23	+8
11 Joey Olson	22	+8
14 Zach May	17	+7
15 Adam Smyth	23	+6
6 Tyler Lopic	21	+5
22 Andy Pearson	23	+5
18 Gustav Bengtson	19	+5
5 Drew Aspinwall	23	+4

## Assists	GP	G	A	Pts	Sh
9 Corey Leivermann	23	16	11	27	64
6 Tyler Lopic	21	5	10	15	36
15 Adam Smyth	23	11	8	19	115
22 Andy Pearson	23	4	8	12	51
18 Gustav Bengtson	19	6	7	13	42
4 Jack Walsh	23	2	7	9	46
5 Drew Aspinwall	23	1	6	7	25
14 Zach May	17	1	6	7	24
3 Jared Docken	22	1	5	6	20
11 Joey Olson	22	0	5	5	12

## Shots	GP	G	A	Pts	Sh	Sh%
15 Adam Smyth	23	11	8	19	115	.096
9 Corey Leivermann	23	16	11	27	64	.250
22 Andy Pearson	23	4	8	12	51	.078
4 Jack Walsh	23	2	7	9	46	.043
18 Gustav Bengtson	19	6	7	13	42	.143
20 Nate Paulsen	23	5	3	8	42	.119
19 Sam Majka	22	0	4	4	40	.000
6 Tyler Lopic	21	5	10	15	36	.139
21 Alex Gallen	23	3	2	5	26	.115
5 Drew Aspinwall	23	1	6	7	25	.040

## Shot Pct.	GP	G	A	Pts	Sh	Sh%
9 Corey Leivermann	23	16	11	27	64	.250
24 Cory Ellis	18	2	2	4	10	.200
16 Darren Lopic	23	4	2	6	25	.160
18 Gustav Bengtson	19	6	7	13	42	.143
8 Paulson,Tony	5	1	0	1	7	.143
6 Tyler Lopic	21	5	10	15	36	.139
10 Gavin Tufte	19	3	2	5	25	.120
20 Nate Paulsen	23	5	3	8	42	.119
21 Alex Gallen	23	3	2	5	26	.115
2 Smith,Sam	16	1	4	5	10	.100

## Penalties	GP	Pen	Min
9 Corey Leivermann	23	17	42
6 Tyler Lopic	21	16	32
14 Zach May	17	14	55
5 Drew Aspinwall	23	9	18
16 Darren Lopic	23	9	18
4 Jack Walsh	23	8	16
21 Alex Gallen	23	8	16
15 Adam Smyth	23	7	14
20 Nate Paulsen	23	6	12
2 Smith,Sam	16	6	12

## Penalty Minutes	GP	Pen	Min
14 Zach May	17	14	55
9 Corey Leivermann	23	17	42
6 Tyler Lopic	21	16	32
5 Drew Aspinwall	23	9	18
16 Darren Lopic	23	9	18
21 Alex Gallen	23	8	16
4 Jack Walsh	23	8	16
15 Adam Smyth	23	7	14
20 Nate Paulsen	23	6	12
26 Blake Schammel	20	6	12



2013-14 GUSTAVUS ADOLPHUS MEN'S HOCKEY GAME NOTES

2013-14 GOALS-ASSISTS-POINTS

Gustavus Adolphus Hockey Gustavus Adolphus Game-by-Game Goals-Assists-Points (as of Feb 20, 2014) All games

Opponent	Date	Score	1	2	3	4	5	6	7	8	9	10	11
			MCLEAN,JOH	SMITH,SAM	DOCKEN,JAR	WALSH,JACK	ASPINWALL,	LAPIC, TYLER	ADAMS,SCHY	PAULSON,TO	LEIVERMANN	TUFTE,GAVIN	OLSON,JOEY
vs BU	Nov 01	2-1 W	0-0-0	DNP	0-0-0	0-0-0	0-0-0	0-1-1	1-0-1	0-0-0	DNP	0-1-1	0-0-0
vs UST	Nov 03	3-5 L	0-0-0	DNP	0-1-1	0-0-0	0-0-0	0-1-1	1-0-1	DNP	1-0-1	0-2-2	0-0-0
at UWSP	Nov 08	4-8 L	0-0-0	DNP	0-0-0	0-3-3	0-0-0	1-2-3	0-0-0	DNP	2-2-4	0-0-0	0-0-0
at STOUT	Nov 09	3-1 W	0-0-0	0-0-0	0-0-0	0-0-0	0-1-1	0-0-0	0-1-1	DNP	0-0-0	0-0-0	0-0-0
CNCM	Nov 15	1-3 L	0-0-0	0-1-1	0-0-0	0-0-0	0-0-0	0-0-0	0-0-0	DNP	1-0-1	0-0-0	0-0-0
CNCM	Nov 16	3-1 W	0-0-0	DNP	1-0-1	1-0-1	0-0-0	0-0-0	0-1-1	DNP	0-1-1	0-0-0	0-0-0
HUMH	Nov 22	5-2 W	0-0-0	DNP	0-0-0	0-1-1	0-0-0	DNP	DNP	0-0-0	1-1-2	0-0-0	0-2-2
at HUM	Nov 23	5-1 W	0-0-0	0-0-0	0-0-0	0-0-0	0-1-1	DNP	DNP	0-0-0	0-1-1	DNP	0-1-1
at LU	11/29/20	6-6 t	0-0-0	DNP	0-1-1	1-0-1	0-0-0	1-1-2	DNP	DNP	1-0-1	0-0-0	0-0-0
vs MU	11/30/20	3-2 W	DNP	0-0-0	DNP	0-1-1	1-0-1	0-1-1	DNP	1-0-1	1-0-1	DNP	0-0-0
at STO	Dec 06	3-1 W	0-0-0	0-1-1	0-0-0	0-0-0	0-0-0	0-0-0	DNP	DNP	1-0-1	1-0-1	0-0-0
STO	Dec 07	2-2 t	0-0-0	0-0-0	0-1-1	0-0-0	0-0-0	0-0-0	DNP	DNP	0-0-0	0-0-0	0-0-0
LFC	Jan 10	2-2 t	0-0-0	DNP	0-0-0	0-0-0	0-0-0	0-0-0	DNP	DNP	0-0-0	0-0-0	0-0-0
ADRIAN	Jan 11	0-2 L	0-0-0	0-0-0	0-0-0	0-0-0	0-0-0	0-0-0	DNP	0-0-0	0-0-0	0-0-0	DNP
AUG	Jan 17	3-1 W	0-0-0	1-1-2	0-0-0	0-1-1	0-0-0	0-1-1	DNP	DNP	1-1-2	DNP	0-1-1
at AUG	01/18/14	4-2 W	0-0-0	0-1-1	0-1-1	0-0-0	0-0-0	1-1-2	DNP	DNP	1-1-2	DNP	0-0-0
SMU	Jan 24	4-1 W	0-0-0	0-0-0	0-0-0	0-0-0	0-0-0	0-0-0	DNP	DNP	1-0-1	0-0-0	0-0-0
at SMU	Jan 25	5-1 W	0-0-0	0-0-0	0-0-0	0-0-0	0-2-2	0-1-1	DNP	DNP	0-1-1	2-0-2	0-0-0
SJU	Jan 31	2-1 W	0-0-0	0-0-0	0-0-0	0-0-0	0-0-0	1-0-1	DNP	DNP	0-1-1	0-0-0	0-1-1
at SJU	Feb 01	4-1 W	0-1-1	0-0-0	0-0-0	0-0-0	0-0-0	0-1-1	DNP	DNP	2-0-2	0-0-0	0-0-0
at RFM	Feb 7	2-2 t	0-0-0	0-0-0	0-0-0	0-0-0	0-1-1	0-0-0	DNP	0-0-0	0-1-1	0-0-0	0-0-0
at UST-MEN	Feb 14	2-4 L	0-0-0	0-0-0	0-1-1	0-1-1	0-0-0	0-1-1	DNP	DNP	2-0-2	0-0-0	0-0-0
UST	Feb 15	1-4 L	0-0-0	0-0-0	0-0-0	0-0-0	0-0-0	0-0-0	DNP	DNP	1-0-1	0-0-0	0-0-0

Opponent	Date	Score	14	15	16	17	18	19	20	21	22	23	24
			MAY,ZACH	SMYTH,ADAM	LAPIC,DARRE	AKINS,SAM	BENGTSON,G	MAJKA,SAM	PAULSEN,NA	GALLEN,ALE	PEARSON,AN	BARNES,BLA	ELLIS,CORY
vs BU	Nov 01	2-1 W	0-0-0	0-0-0	0-0-0	0-1-1	DNP	1-0-1	0-0-0	0-0-0	0-0-0	0-0-0	DNP
vs UST	Nov 03	3-5 L	0-1-1	0-0-0	1-0-1	DNP	0-0-0	0-0-0	0-0-0	0-0-0	0-0-0	0-0-0	DNP
at UWSP	Nov 08	4-8 L	0-0-0	0-0-0	0-0-0	DNP	0-0-0	0-0-0	1-0-1	0-1-1	0-0-0	DNP	DNP
at STOUT	Nov 09	3-1 W	0-1-1	2-0-2	0-0-0	DNP	DNP	0-0-0	0-0-0	1-0-1	0-1-1	DNP	0-0-0
CNCM	Nov 15	1-3 L	0-0-0	0-0-0	0-0-0	DNP	0-0-0	0-0-0	0-0-0	0-0-0	0-0-0	DNP	DNP
CNCM	Nov 16	3-1 W	0-0-0	0-0-0	0-1-1	DNP	DNP	0-0-0	0-1-1	0-0-0	0-0-0	0-0-0	1-0-1
HUMH	Nov 22	5-2 W	DNP	1-0-1	2-0-2	0-0-0	DNP	0-1-1	0-0-0	0-0-0	0-0-0	DNP	1-1-2
at HUM	Nov 23	5-1 W	0-2-2	1-0-1	0-0-0	DNP	1-0-1	0-1-1	0-0-0	1-0-1	1-1-2	0-0-0	0-0-0
at LU	11/29/20	6-6 t	1-1-2	0-2-2	0-0-0	DNP	0-0-0	0-0-0	2-0-2	0-0-0	0-0-0	0-0-0	0-0-0
vs MU	11/30/20	3-2 W	0-0-0	0-1-1	0-0-0	0-0-0	0-1-1	DNP	0-0-0	0-0-0	0-0-0	DNP	0-0-0
at STO	Dec 06	3-1 W	0-0-0	1-0-1	0-0-0	DNP	0-0-0	0-1-1	0-1-1	0-0-0	0-1-1	DNP	0-0-0
STO	Dec 07	2-2 t	DNP	0-1-1	0-0-0	DNP	1-1-2	0-0-0	0-0-0	0-0-0	1-0-1	DNP	0-0-0
LFC	Jan 10	2-2 t	0-0-0	2-0-2	0-0-0	DNP	0-1-1	0-0-0	0-0-0	0-0-0	0-2-2	DNP	0-0-0
ADRIAN	Jan 11	0-2 L	0-0-0	0-0-0	0-0-0	0-0-0	0-0-0	0-0-0	0-0-0	0-0-0	0-0-0	0-0-0	DNP
AUG	Jan 17	3-1 W	0-0-0	1-0-1	0-0-0	DNP	0-1-1	0-0-0	0-0-0	0-0-0	0-0-0	DNP	0-0-0
at AUG	01/18/14	4-2 W	DNP	0-1-1	0-0-0	0-0-0	0-2-2	0-0-0	0-0-0	1-0-1	1-0-1	DNP	0-0-0
SMU	Jan 24	4-1 W	DNP	1-0-1	0-0-0	DNP	0-1-1	0-1-1	1-0-1	0-0-0	0-1-1	DNP	0-1-1
at SMU	Jan 25	5-1 W	DNP	0-2-2	1-0-1	DNP	2-0-2	0-0-0	0-0-0	0-0-0	0-2-2	DNP	0-0-0
SJU	Jan 31	2-1 W	0-1-1	1-1-2	0-0-0	DNP	0-0-0	0-0-0	0-0-0	0-0-0	0-0-0	DNP	0-0-0
at SJU	Feb 01	4-1 W	0-0-0	1-0-1	0-0-0	DNP	0-0-0	0-0-0	0-1-1	0-0-0	1-0-1	DNP	0-0-0
at RFM	Feb 7	2-2 t	DNP	0-0-0	0-0-0	DNP	1-0-1	0-0-0	1-0-1	0-0-0	0-0-0	DNP	0-0-0
at UST-MEN	Feb 14	2-4 L	0-0-0	0-0-0	0-0-0	DNP	0-0-0	0-0-0	0-0-0	0-0-0	0-0-0	DNP	0-0-0
UST	Feb 15	1-4 L	0-0-0	0-0-0	0-0-0	DNP	DNP	0-0-0	0-0-0	0-1-1	0-0-0	DNP	0-0-0

Opponent	Date	Score	KOVACS,ROS	SCHAMMEL,B	WESTERLUN	AUSTIN,ALEC	SULLIVAN,PA	JOHNSON,ER
vs BU	Nov 01	2-1 W	0-0-0	0-0-0	DNP	DNP	DNP	DNP
vs UST	Nov 03	3-5 L	DNP	0-0-0	DNP	DNP	0-0-0	DNP
at UWSP	Nov 08	4-8 L	0-0-0	0-0-0	DNP	DNP	DNP	DNP
at STOUT	Nov 09	3-1 W	DNP	0-0-0	DNP	DNP	DNP	DNP
CNCM	Nov 15	1-3 L	DNP	0-0-0	DNP	DNP	DNP	DNP
CNCM	Nov 16	3-1 W	DNP	0-0-0	DNP	DNP	DNP	DNP
HUMH	Nov 22	5-2 W	0-0-0	0-0-0	0-0-0	DNP	DNP	DNP
at HUM	Nov 23	5-1 W	DNP	1-0-1	0-0-0	DNP	DNP	DNP
at LU	11/29/20	6-6 t	DNP	0-0-0	DNP	DNP	DNP	DNP
vs MU	11/30/20	3-2 W	DNP	DNP	0-0-0	0-0-0	DNP	0-0-0
at STO	Dec 06	3-1 W	DNP	0-0-0	DNP	DNP	DNP	DNP
STO	Dec 07	2-2 t	DNP	0-0-0	0-0-0	DNP	DNP	DNP
LFC	Jan 10	2-2 t	0-0-0	DNP	0-0-0	DNP	DNP	DNP
ADRIAN	Jan 11	0-2 L	DNP	DNP	DNP	DNP	DNP	DNP
AUG	Jan 17	3-1 W	DNP	0-0-0	0-0-0	DNP	DNP	DNP
at AUG	01/18/14	4-2 W	DNP	0-0-0	0-0-0	DNP	DNP	DNP
SMU	Jan 24	4-1 W	DNP	0-1-1	1-0-1	DNP	DNP	DNP
at SMU	Jan 25	5-1 W	DNP	0-1-1	0-0-0	DNP	DNP	DNP
SJU	Jan 31	2-1 W	DNP	0-0-0	DNP	DNP	DNP	DNP
at SJU	Feb 01	4-1 W	DNP	0-1-1	DNP	DNP	DNP	DNP
at RFM	Feb 7	2-2 t	DNP	0-0-0	DNP	DNP	DNP	DNP
at UST-MEN	Feb 14	2-4 L	DNP	0-0-0	DNP	DNP	DNP	DNP
UST	Feb 15	1-4 L	DNP	0-0-0	0-0-0	DNP	DNP	DNP