

2013-14 GUSTAVUS WOMEN'S HOCKEY NOTES

Game 22/23

St. Thomas

Gustavus Sports Information

800 W College Ave, St. Peter, MN 56082
gustavus.edu/athletics
(507) 933-7647 • sportsinfo@gustavus.edu

Women's Hockey Contact
Tyler Grey, Graduate Assistant
(507) 933-8411 • tgrey@gustavus.edu

Follow Gustavus Athletics Online

 **Twitter**
@GustieAthletics

 **Flickr**
flickr.com/photos/gogusties

 **Facebook**
facebook.com/GustieAthletics

 **YouTube**
youtube.com/gustavusathletics

 **Game Central**
client.stretchinternet.com/client/gac.portal

 **Instagram**
instagram.com/gustieathletics

2013-14 Schedule/Results

Date	Opponent	Time/Result
11/2	SAINT MARY'S UNIVERSITY	W 8-2 (1-0-0)
11/8	UW-SUPERIOR	L 1-2 (1-1-0)
11/9	UW-SUPERIOR	T 2-2 (1-1-1)
11/15	Concordia College*	W 4-1 (2-1-1)
11/16	Concordia College*	W 2-0 (3-1-1)
11/22	Hamline University*	W 6-0 (4-1-1)
11/23	HAMLIN UNIVERSITY*	W 4-1 (5-1-1)
12/6	ST. OLAF COLLEGE*	W 5-2 (6-1-1)
12/7	St. Olaf College*	W 2-0 (7-1-1)
12/11	UW-River Falls	T 2-2 (7-1-2)
12/13	UW-RIVER FALLS	L 0-3 (7-2-2)
1/10	UW-Stevens Point	L 2-5 (7-3-2)
1/11	UW-Stevens Point	W 2-1 (8-3-2)
1/17	Augsburg College*	W 5-2 (9-3-2)
1/18	AUGSBURG COLLEGE*	W 3-2 (10-3-2)
1/24	Saint Mary's University*	W 4-3 (11-3-2)
1/25	SAINT MARY'S UNIVERSITY*	W 5-0 (12-3-2)
1/31	COLLEGE OF SAINT BENEDICT*	L 2-4 (12-4-2)
2/1	College of Saint Benedict*	L 2-4 (12-5-2)
2/7	ST. CATHERINE UNIVERSITY*	W 3-0 (13-5-2)
2/8	St. Catherine University*	W 3-1 (14-5-2)
2/14	UNIVERSITY OF ST. THOMAS*	7:00 p.m.
2/15	University of St. Thomas*	2:00 p.m.
2/21	Bethel University*	7:00 p.m.
2/22	BETHEL UNIVERSITY*^	2:00 p.m.

Home Games in BOLD CAPS

* - Indicates MIAC Contest

^ - Senior Night



9 Gustavus Adolphus
Golden Gusties
(14-5-2 Overall, 12-2-0 MIAC)

vs.

8 St. Thomas
Tommies
(14-4-3 Overall, 11-1-2 MIAC)



Game 22

Date: Friday, February 14 • **Time:** 7:00 p.m. • **Location:** St. Peter, Minn.

Arena: Don Roberts Ice Rink

Live Video: <http://client.stretchinternet.com/client/gac.portal>

Live Stats: <https://gustavus.edu/athletics/whky/LIVE/xlive.htm>

Live Audio: <http://client.stretchinternet.com/client/gac.portal>

Game 23

Date: Saturday, February 15 • **Time:** 2:00 p.m. • **Location:** Mendota Heights, Minn.

Arena: Saint Thomas Ice Arena

Live Video: <http://www.mnsportsnetwork.com/>

Live Stats: <http://dl.dropboxusercontent.com/u/108640996/XLIVE.HTM>

Live Audio: <http://www.mnsportsnetwork.com/>

Setting The Scene... The Gustavus Adolphus women's hockey team is set to battle eighth-ranked St. Thomas this weekend in a crucial Minnesota Intercollegiate Athletic Conference (MIAC) series. The two teams are currently tied for the league lead with 24 points apiece as Gustavus enters the weekend with a record of 14-5-2 overall and 12-2-0 in the MIAC, while St. Thomas comes in with a record of 14-4-3 overall and 11-1-2 in league play. The Gusties and Tommies will square off in St. Peter on Friday night at 7:00 p.m., before traveling to Mendota Heights for a 2:00 p.m., opening face off on Saturday afternoon.

Gustavus enters the series coming off a sweep of St. Catherine last weekend. The Gusties shut out the Wildcats 3-0 on Friday in St. Peter before traveling to St. Paul and Drake Arena on Saturday afternoon on their way to a 3-1 win. St. Thomas comes in following a split with Bethel a week ago. The Tommies fell to the Royals 5-3 on Friday night in Blaine, but were able to salvage the split on Saturday afternoon with a 3-2 win in Mendota Heights.

Series Snapshot... This weekend's series marks the 38th and 39th meetings between Gustavus and St. Thomas in women's hockey. The Gusties hold the upper hand in the all-time series with a record of 25-8-4 and have won each of the last five meetings, including a sweep of last season's series in mid-November.

Last Time They Met... The last time these two teams met was on Nov. 17th of last season when Gustavus captured a 1-0 win on Parent's Day in St. Peter. The win came less than 24 hours after defeating the Tommies 4-1 in Mendota Heights. In Friday night's game, the Gusties scored three first-period goals and added a fourth in the second to take a comfortable 4-0 lead into the third period. St. Thomas scored in the final frame to avoid the shut out, but it was not enough in the loss. Saturday's only goal came midway through the second period of the 1-0 win for Gustavus.

Gustavus Embarks On 17th Season Of Women's Hockey... The Gustavus women's hockey team is currently in its 17th season. Founded in 1997, the Gusties have attained an all-time record of 363-92-26, which stands as the second winningest program in all of

The Match Up

Statistical Comparison

Gustavus		St. Thomas
3.2 (2nd)	Goals For	2.7 (3rd)
1.8 (t-2nd)	Goals Against	1.7 (1st)
19.4 (2nd)	Power Play	16.7 (4th)
92.2 (1st)	Penalty Kill	89.9 (2nd)
51.4 (2nd)	Combined Special Teams	57.7 (1st)
8.4 (7th)	Penalty Minutes	7.6 (8th)

- 2013-14 season averages with MIAC ranks

The Series

Gustavus vs. St. Thomas

All-Time Record	25-8-4
Last Meeting	W 1-0
Current Streak	W 5
Head Coach Mike Carroll	
Overall Record at Gustavus	328-75-25
vs. St. Thomas	23-8-4
Head Coach Tom Palkowski	
Overall Record at St. Thomas	93-47-15
vs. Gustavus	2-10-2
Last Five Seasons	7-2-2

Date	Location	Result
11/17/12	St. Peter, Minn.	W 1-0
11/16/12	Mendota Heights, Minn.	W 4-0
11/19/11	Mendota Heights, Minn.	W 3-2
11/18/11	St. Peter, Minn.	W 5-3
12/4/10	St. Peter, Minn.	W 1-0
12/3/10	Mendota Heights, Minn.	L 0-1
12/5/09	Mendota Heights, Minn.	T 2-2
12/4/09	St. Peter, Minn.	L 1-2
3/4/09**	St. Peter, Minn.	W 3-0
1/17/09	St. Peter, Minn.	W 1-0
1/16/09	Mendota Heights, Minn.	T 1-1

* - Denotes MIAC Playoff Game

** - Denotes MIAC Championship Game

NCAA Division III women's hockey. The Gustie women have won 12 Minnesota Intercollegiate Athletic Conference (MIAC) titles in the 14 years of women's hockey in the conference. Those 12 titles rank first in front of St. Thomas, Augsburg, and Saint Mary's, who all have two championships apiece. Gustavus has also earned the MIAC Playoff crown a total of 11 times, 10 of which have come in the last 10 years, that have led to 11 NCAA Tournament appearances.

Wearing The "C"... In the 16-year history of the Gustavus women's hockey program, 30 players have earned the honor of being a captain. This year, three more young women are added to that list. All first-year captains, senior Melissa Doyle and juniors Courtney Boucher and Carolyn Draayer will accept the role during the 2013-14 campaign.

Home Grown... Of the 25 players on this year's roster, 25 are natives of Minnesota. The only players to reside outside of the Gopher State are Courtney Bethune, who hails from Fort Frances, Ontario, and Allie Lewis, who is a native of Kearney, Nebraska.

Fountain Of Youth... After losing 11 letterwinners from last year's squad, Gustavus will look to its youth to provide much-needed production this season. The Gusties return just 12 letterwinners from a year ago compared to a class of 12 first-year players and two transfers in sophomore goalie Amanda Koep, who transferred from the University of North Dakota, and Katy Snyder, a transfer from St. Catherine University. Both joined the team over the semester break.

Gusties In The Polls... Gustavus is ranked ninth in the latest USCHO.com Division III Women's Hockey Poll, which was released Monday. This week marks the 74th consecutive time that the Gusties have been ranked in the USCHO.com poll. This week's poll remained consistent with that of last week, as Gustavus stayed at No. 9 for the second straight week. After a split with Bethel, St. Thomas remained at No. 8.

About The Tommies... St. Thomas enters the weekend following a split with Bethel last weekend. The Tommies fell to the Royals by the final score of 5-3 on Friday night in Blaine, Minn., but were able to salvage the split with a 3-2 win on Saturday afternoon in Mendota Heights. The loss on Friday was St. Thomas's first in conference play this season.

So far, the Tommies are averaging 2.7 goals per game (3rd/MIAC) behind four players who have scored double-figure points on the season. Paige Baldwin leads the way with 13 points (t-13th/MIAC) on seven goals and six assists. Jenny Saxon, Courtney Umland, and Mary Grace Flesher follow with 12 points each. Saxon has scored six goals to go along with six assists, while Umland has four goals and eight assists and Flesher has one goal and 11 assists.

Defensively, the Tommies are allowing an average of 1.7 goals per game (t-8th/NCAA) thanks in large part to goaltender Alise Riedel. Riedel has logged 968:19 in net, allowing 21 goals in 17 games played for a goals against average of 1.30 (6th/NCAA). She has also made 382 saves and holds a save percentage of .948 (4th/NCAA).

Battle At The Top... A conference title is at stake this weekend, as the series features the top two teams in the league standings. St. Thomas and Gustavus are currently tied for the lead with 24 points each. Although one regular season series remains, this weekend's series has large implications for who will earn the crown and take the top seed into the MIAC Playoffs.

Top-Ten Showdown... This weekend's series features a pair of teams ranked in the top-ten according to the latest USCHO.com Division III Women's Hockey Poll. St. Thomas enters the series ranked No. 8, while Gustavus comes in at No. 9. Neither team has had success against ranked opponents this season, as the Tommies have a record of 1-3-0 against the top ten, while the Gusties are 1-3-2.

The Century Club... Each of this season's three seniors has now played more than 100 games in their careers. Maddie Bergh (103), Amanda Cartony (105), and Melissa Doyle (108) join 28 other players in the history of Gustavus women's hockey program to play in 100 or more games in their career.

The Facts

Gustavus Quick Facts

Location:	St. Peter, Minnesota
Address:	800 West College Ave. St. Peter, MN 56082
Founded:	1862
Enrollment:	2,572
Nickname:	Golden Gusties
School Colors:	Black and Gold
Home Court:	Gus Young Court
NCAA Affiliation:	NCAA Division III
Conference:	Minnesota Intercollegiate Athletic
President:	Jack R. Ohle
Athletic Director:	Tom Brown
Assistant Athletic Director:	Jared Phillips
Athletic Trainer:	Troy Banse
Equipment Manager:	Wayne Norman
Sports Information Director:	Ethan Armstrong

Gustavus Hockey Quick Facts

2012-13 Record:	27-2-1
2012-13 MIAC Record/Finish:	18-0-0/1st
All-Time Record:	363-94-26
All-Time MIAC Record:	240-25-12
MIAC Championships :	12
Letterwinners Returning/Lost:	12/11
All-MIAC Honorees Returning/Lost:	1/3

Gustavus Under Head Coach Mike Carroll

Year	Overall	MIAC	Conference Finish
1999-00	18-10-1	12-5-1	3rd
2000-01	23-6-1	16-2-0	1st
2001-02	23-5-2	18-0-1	1st
2002-03	14-9-4	11-4-3	3rd
2003-04	22-6-0	16-2-0	2nd
2004-05	25-4-1	17-1-0	1st
2005-06	22-5-2	17-0-1	1st
2006-07	25-3-0	17-1-0	1st
2007-08	25-3-0	18-0-0	1st
2008-09	22-2-4	16-0-2	1st
2009-10	26-6-2	14-3-1	1st
2010-11	22-5-3	14-2-2	1st
2011-12	24-4-2	16-1-1	1st
2012-13	27-2-1	18-0-0	1st
2013-14	14-5-2	12-2-0	-
Totals	328-75-25	232-23-12	11 MIAC Titles

Around The League

MIAC Standings

School	Points	MIAC	Overall
St. Thomas ^	24	11-1-2	14-4-3
Gustavus ^	24	12-2-0	14-5-2
Bethel ^	20	10-4-0	14-5-2
Concordia	18	8-4-2	9-8-4
St. Catherine	15	7-6-1	10-9-1
St. Olaf	11	5-8-1	5-15-1
Augsburg	8	4-10-0	7-14-0
Saint Benedict	8	4-10-0	7-14-0
Saint Mary's	8	4-10-0	6-14-1
Hamline	4	1-11-2	5-14-2

^ – Denotes MIAC Playoff Qualifier

This Weekend In The MIAC

Friday, Feb. 14th

Concordia @ Saint Mary's | 7:00 p.m.
Augsburg @ Hamline | 7:00 p.m.
St. Thomas @ Gustavus | 7:00 p.m.
Saint Benedict @ Bethel | 7:00 p.m.
St. Olaf @ St. Catherine | 7:00 p.m.

Saturday, Feb. 15th

Concordia @ Saint Mary's | 2:00 p.m.
Gustavus @ St. Thomas | 2:00 p.m.
Bethel @ Saint Benedict | 2:00 p.m.
St. Catherine @ St. Olaf | 2:00 p.m.
Hamline @ Augsburg | 7:00 p.m.

MIAC Athlete-of-the-Week



Lindsay Burman, Bethel
Jr., Forward
Stanchfield, Minn./Cambridge-Isanti

Opponent	Goals	Assists	Points
St. Thomas (W 5-3)	1	2	3
@ St. Thomas (L 2-3)	1	0	1
Total	2	2	4

USCHO.com Div. III Poll

Rank	School	Overall	Points	Last
1	Plattsburgh (14)	18-1-1	149	1
2	Middlebury (1)	16-1-3	128	2
3	Elmira	16-4-1	124	3
4	Norwich	19-3-0	105	4
5	UW-River Falls	15-4-3	90	5
6	UW-Stevens Point	16-4-2	79	6
7	UW-Superior	14-4-4	50	7
8	St. Thomas	14-4-3	35	8
9	Gustavus Adolphus	14-5-2	33	9
10	Amherst	11-5-4	18	10



Gustavus Record When...

At home	6-3-1
On the road	8-2-1
Neutral Site	0-0-0
vs. MIAC opponents	12-2-0
vs. Non-conference opponents	1-2-2
vs. Top 10 opponents	1-3-2
GAC scores 4 or more goals	8-0-0
GAC scores 3 goals	3-0-0
GAC scores 2 or fewer goals	3-5-2
GAC scores first	12-2-1
Opponent scores first	2-3-1
GAC leads after 1st period	8-1-2
Opponent leads after 1st period	1-2-0
Tied after 1st period	5-2-0
GAC leads after 2nd period	8-1-0
Opponent leads after 2nd period	0-2-0
Tied after 2nd period	6-2-2
In overtime	0-0-2
Games decided by one goal	0-1-0
Games decided by two goals	4-2-0
Games decided by three goals	5-1-0
Games decided by four or more	5-1-0
GAC scores on the power play	6-1-1
GAC scoreless on the power play	5-3-0
GAC scores two or more PP goals	3-1-1
GAC outshoots opponent	14-3-1
GAC outshot by opponent	0-2-1
Shots equal	0-0-0
Wednesday	0-0-1
Friday	6-4-0
Saturday	8-1-1
In November	4-1-1
In December	2-1-1
In January	5-2-0
In February	2-1-0
In March	0-0-0
Following a win	10-2-1
Following a loss	2-2-1
Following a tie	1-1-0
Night games	7-4-1
Day games	7-1-1

Who's Hot

Scoring vs. St. Catherine

Player	Games	Goals	Assists	Points	Point Streak
Allison Eder-Zdechlik	2	2	0	2	-
Courtney Boucher	2	0	2	2	3
Leah Johnson	2	1	0	1	1
Emily Reibert	2	1	0	1	1
Maddie Bergh	2	1	0	1	1
Marissa Brandt	2	1	0	1	-
Melissa Doyle	2	0	1	1	-
Carolyn Draayer	2	0	1	1	-

Goaltending vs. St. Catherine

Player	Record	Minutes	Goals Ag.	Saves	Scoreless Streak
Lindsey Hibbard	2-0-0	120:00	1	34	5:49
Amanda Koep	0-0-0	0:00	0	0	3:38
Tara Hoverstad	0-0-0	0:00	0	0	4:45

Career Scoring vs. St. Thomas

Player	Games	Goals	Assists	Points
Amanda Cartony	6	1	2	3
Carolyn Draayer	4	3	0	3
Allison Eder-Zdechlik	2	2	0	2
Maddie Bergh	6	0	1	1
Melissa Doyle	6	1	0	1
Courtney Boucher	4	0	1	1
Marissa Brandt	4	0	1	1
Keri Pickel	2	0	1	1
Leah Johnson	4	0	0	0
Emily Reibert	2	0	0	0

Career Goaltending vs. St. Thomas

Player	GP	Record	Minutes	GA	Saves
Lindsey Hibbard	2	2-0-0	120:00	1	31

Season By The Numbers

Largest Victory	6 (2x), Last vs. Hamline (11/22/13)
Largest Defeat	3 (2x), Last vs. UW-Stevens Point (1/10/14)
Largest First Period Lead	2 (2x), last vs. St. Olaf (12/6/13)
Largest First Period Deficit	3 vs. Saint Benedict (1/31/14)
Largest Second Period Lead	4 (3x), Last: (4-0) vs. Saint Mary's (1/25/14)
Largest Second Period Deficit	3 (4-1) vs. Saint Benedict (1/31/14)

Most Goals Scored	8, vs. Saint Mary's (11/2/13)
Fewest Goals Scored	0 vs. UW-River Falls (12/13/13)
Most Goals Allowed	5 vs. UW-Stevens Point (1/10/14)
Fewest Goals Allowed	0 (4x), Last: (5-0) vs. Saint Mary's (1/25/14)

Largest Lead	6 (2x), Last: (6-0) Last vs. Hamline (11/22/13)
Largest Lead On Road	6 (6-0), vs. Hamline (11/22/13)
Largest Lead At Home	6 (8-2), vs. Saint Mary's (11/2/13)
Largest Blown Lead	2 (2-0 in 4-2 L) vs. Saint Benedict (2/1/14)
Largest Deficit	3 (3x), Last: (3-0) vs. Saint Benedict (1/31/14)
Largest Deficit On Road	3 (5-2), vs. UW-Stevens Point (1/10/14)
Largest Deficit At Home	3 (3x), Last: (3-0) vs. Saint Benedict (1/31/14)
Largest Comeback -Win/Tie	1 (4-1 Win), vs. Concordia (11/15/13)



The Last Time It Happened

COMEBACKS

GAC won when trailing after two periods

Feb. 29, 2013 vs. Bethel. Gusties trailed 2-0 after two, but came back with three goals in the third for a 3-2 win.

Opponent won when trailing after two periods

Feb. 1, 2014 vs. Saint Benedict. Blazers trailed 2-1 after two periods, but scored three in the third to capture a 4-2 win.

Overcame 1-goal deficit and won

GAC: Jan. 24, 2014 at Saint Mary's. Trailing 2-1 after the first period, the Gusties came back to win 4-3.

OPP: Jan. 10, 2014 at UW-Stevens Point. Trailing 1-0 in the first period, the Pointers came back to win 5-2.

Overcame 2-goal deficit and won

GAC: Feb. 29, 2013 vs. Bethel. Gusties trailed 2-0 after two, but came back with three goals in the third for a 3-2 win.

OPP: Feb. 1, 2014 vs. Saint Benedict. Blazers trailed 2-0 in second period, but scored four unanswered goals to capture a 4-2 win.

Overcame a 3-goal deficit and won

GAC: March 1, 1998 vs. University of Minnesota Club. Gusties scored one in the second and three in the third to win 4-3.

OPP: Never

OVERTIME GAMES

Won overtime game

GAC: March 1, 2012 vs Bethel. Courtney Boucher scored 6:25 in to overtime to win 1-0 and advance to the MIAC Championship.

OPP: March 17, 2012 vs. Plattsburgh State (NCAA Third Place Game)

Tied overtime game

Dec. 11, 2013 at UW-River Falls (2-2)

SERIES SWEEPS

Swept a 2-game regular season home and away series

GAC: Feb. 7-8, 2014 vs. St. Catherine. (3-0 Friday night in St. Peter, 3-1 Saturday in St. Paul)

OPP: Jan. 31-Feb. 1, 2014 vs. Saint Benedict. (4-2 Friday night in St. Peter, 4-2 again on Saturday in St. Cloud)

Swept a 2-game regular season home series

GAC: Jan. 25-26, 2013 vs. Concordia. (5-1, 4-1)

OPP: Never

Swept a 2-game regular season away series

GAC: Nov. 15-16, 2013 at Concordia. (4-1, 2-0)

OPP: Never. (MIAC Playoffs: March 10-11, 2000 at Augsburg. (4-1, 2-1)

SHUTOUTS

Last Shutout

GAC: Feb. 7, 2014 vs. St. Catherine 3-0.

OPP: Dec. 13, 2013 vs. UW-River Falls 3-0.

Last Shutout in St. Peter

GAC: Feb. 7, 2014 vs. St. Catherine 3-0.

OPP: Dec. 13, 2013 vs. UW-River Falls 3-0.

Last Road Shutout

GAC: Nov. 22, 2013 at Hamline 6-0.

OPP: Dec. 3, 2010 at St. Thomas 1-0.

Scoreless Ties (2 in program history)

Jan. 14, 2010 vs. Trinity (Conn.)

Feb. 17, 2009 at UW-Stevens Point

EXTRA ATTACKER GOALS

GAC: Dec. 11, 2013 at UW-River Falls. Allison Eder-Zdechlik scored in the final second of a 2-2 tie in River Falls, Wis.

OPP: Jan. 9, 2005 at UW-River Falls. Gusties won 6-4.

SHORTHANDED GOALS

Scored a shorthanded goal

GAC: Jan. 25, 2014 vs. Saint Mary's. Carolyn Draayer scored shorthanded in the second period of a 5-0 win for Gustavus.

OPP: Jan. 10, 2014 at UW-Stevens Point. Cassandra Salmen scored shorthanded in the third period of a 5-2 win for the Pointers.

Scored two shorthanded goals

GAC: Nov. 22, 2008 at St. Olaf. Melissa Mackley scored two shorthanded goals in the third period. Gusties won 4-2.

OPP: Never

EMPTY NET GOALS

GAC: Dec. 6, 2013 vs. St. Olaf. Melissa Doyle scored EN at 19:47 of a 5-2 win for the Gusties in St. Peter.

OPP: Feb. 1, 2014 vs. Saint Benedict. Elli Marvin scored EN at 19:53 of a 4-2 win for the Blazers in St. Cloud.

TEAM GOALS IN A PERIOD

Team scored 5 or more goals in a period

GAC: Feb. 23, 2013 vs. Saint Benedict. The Gusties scored six goals in the second period on their way to an 8-2 victory in St. Peter.

OPP: Dec. 3, 1998 at the University of Minnesota (Mariucci Arena.

Gophers scored five goals in the first period and won 8-1.

PENALTY SHOTS

Scored on a penalty shot

GAC: Never.

OPP: March 19, 2011 vs. Middlebury (NCAA 3rd Place Game, Rochester, N.Y.). Penalty shot goal scored after Lindsey Hjelm checking penalty in the second period. Middlebury won 5-0.

PENALTIES

Not penalized

GAC: Dec. 1, 2012 at Augsburg. GAC won 3-1.

OPP: Dec. 2, 2000 at St. Catherine. St. Kate's won 4-3.

Neither team was penalized

Jan. 30, 1998 at Saint Mary's. Gusties won 6-2.

HAT TRICKS

Last individual 3-goal game

GAC: Jan. 26, 2013 vs. Concordia. Lindsey Hjelm scored three goals (all even) in a 5-1 Gustavus win in St. Peter.

OPP: Jan. 10, 2014 at UW-Stevens Point. Cassandra Salmen scored three goals in the third period of a 5-2 Pointer win.

Last individual 4-goal game

GAC: Dec. 2, 2011 at Augsburg. Allie Schwab scored three PP goals and an even goal in a 9-0 shutout.

OPP: Never.

All goals scored by one player (3+ Goals)

GAC: Never.

OPP: Dec. 2, 2006 at Hamline. Melanie Levielle scored all three goals in a 4-3 loss.

SHOTS ON GOAL

Fewer than 15 shots in a game

GAC: Dec. 3, 1998 at the University of Minnesota, 11 shots. Minnesota won 8-1.

OPP: Feb. 8, 2014 at St. Catherine, 13 shots. Gustavus won 3-1.

Fewer than 20 shots in a game

GAC: Dec. 14, 2012 vs. UW-River Falls, 19 shots in 3-2 Gustavus win.

OPP: Feb. 8, 2014 at St. Catherine, 13 shots. Gustavus won 3-1.

40 or more shots in a game

GAC: Jan. 31, 2014 vs. Saint Benedict, 41 shots in 4-2 Gustavus loss.

OPP: Dec. 10, 2010 at UW-River Falls, 40 shots. River Falls won 4-2.

50 or more shots in a game

GAC: Feb. 16, 2013 vs. St. Olaf, 51 shots. Gustavus won 6-2.

OPP: Nov. 23, 1998 vs. the University of Minnesota: 51 shots. Minnesota won 6-0.

60 or more shots in a game

GAC: Feb. 15, 2013 at St. Olaf, 61 shots. Gustavus won 7-4.

OPP: Feb. 5, 1998 at Boston College, 65 shots. BC won 10-1.

SINGLE GAME POINTS

Player had four points in a game

GAC: Jan. 17, 2014 at Augsburg. Courtney Boucher had four assists in a 5-2 win for Gustavus.

OPP: Mar. 18, 2011 vs. Norwich (NCAA Semifinals). Julie Fortier scored three goals with an assist in a 5-4 Norwich victory.

Player had five points in a game

GAC: Dec. 2, 2011 at Augsburg. Allie Schwab scored three PP goals and an even goal with an assist in a 9-0 shutout.

OPP: Mar. 18, 2005 vs. Middlebury. (NCAA Semifinals) Lorna Grifis scored two goals with three assists in a 7-3 Middlebury win.

Player had six or more points in a game

GAC: Feb. 11, 2005 at St. Catherine. Andrea Peterson scored two goals with six assists in a 13-0 win. (Most individual points in a game in program history)

OPP: Jan. 30, 1999 at Middlebury. Michelle Labbe scored three goals with three assists in a 8-0 Middlebury win.





Carroll At A Glance

Hometown

• Edina, Minnesota

Education

• Bachelor's Degree: Recreation, Parks, and Leisure Services (Mankato State '82)

Family

• Wife Terri
• Children Matt and Mike

Coaching

- 1983-84 – Assistant Coach, University of St. Thomas
- 1984-85 – Assistant Coach, Fergus Falls High School
- 1986-87 – Head Coach, Fergus Falls Community College
- 1990-99 – Head Coach, Mankato West High School
- 1999-Present – Head Coach, Gustavus Adolphus College

Years At Gustavus: 14

All-time Record: 328-75-25

All-time MIAC Record: 232-23-12

MIAC Titles: 11

MIAC Playoff Titles: 11

NCAA Tournaments: 11

NCAA Tournament Record: 8-16-0

Final Fours: 7

Most Wins In A Season: 27 (2012-13)

Fewest Wins In A Season: 14 (2002-03)

*All-time winningest coach in Gustavus women's hockey history.

Head Coach Mike Carroll

Mike Carroll is entering his 15th season as the women's head hockey coach at Gustavus. Within his tenure behind the Gustie bench, Carroll has turned Gustavus women's hockey into one of the most successful programs in NCAA Division III. He has compiled an overall record of 328-75-25 in 14 seasons and has the most coaching victories in the history of the program.

Last season Carroll directed the Gusties to the most successful season in the history of the program. Gustavus finished the season with an NCAA record 27 wins, going 27-2-1 overall. The Gusties won the MIAC Championship for the ninth consecutive season after going a perfect 18-0-0 within conference play. After winning the MIAC Playoff title for the 10th straight year, Gustavus advanced to the NCAA Tournament for the 11th time in the 13 years. A 2-1 victory over UW-River Falls in the opening round of the NCAA Tournament earned Gustavus a trip to the NCAA Semifinals for the fourth straight season. At the Division III Frozen Four hosted in Superior, Wis., Gustavus fell to Elmira College 4-3 in overtime in the semifinals before dropping the third place game to Plattsburgh State by the score of 4-0.

Carroll has directed the Gusties to 11 MIAC regular season titles (2000-01, 2001-02, 2004-05, 2005-06, 2006-07, 2007-08, 2008-09, 2009-10, 2010-11, 2011-12, 2012-13) and has been named the MIAC Coach-of-the-Year six times (2001-02, 2003-04, 2004-05, 2005-06, 2010-11, 2012-13). In addition to coaching 30 players who have earned All-Conference honors 55 times, he has coached five MIAC Players-of-the-Year in Sarah Garrison, Andrea Peterson, Stefanie Ubl, Allie Schwab, Lindsey Hjelm. Carroll has also worked with 13 players who have earned AHCA All-America distinction 21 times and two American Hockey Coaches Association Players-of-the-Year, including four-time MIAC Player-of-the-Year and four-time All-American Andrea Peterson.

Prior to coming to Gustavus, Carroll served as the head boys' hockey coach at Mankato West High School from 1991 to 1999. Carroll's college coaching resume included a stint as head men's hockey coach at Fergus Falls Community College from 1986 to 1987 as well as a season as the assistant men's coach at the University of St. Thomas in 1983.

Carroll, an Edina, Minnesota native, competed in hockey and baseball at Mankato State. After graduating with a degree in municipal recreation in 1982, Carroll played professional baseball in the Montreal Expos organization for two years.

In addition to his hockey coaching duties at Gustavus, Carroll is also the head coach of the Golden Gustie baseball team. Mike and his wife, Terri, live in Mankato and have two sons, Matt and Mike.

2013-14 Roster Breakdown

Letterwinners Returning (13)

Maddie Bergh
Courtney Boucher
Marissa Brandt
Amanda Cartony
Melissa Doyle
Carolyn Draayer
Allison Eder-Zdechlik
Lindsey Hibbard
Tara Hoverstad
Leah Johnson
Keri Pickel
Emily Reibert

Newcomers (14)

Mikaela Algren
Courtney Bethune
Halie Gudmonson
Emily Gustafson
Hannah Heacox
Callie Johnson
Amanda Koep
Allie Lewis
Courtney Potter
Katy Snyder
Megan Tragiai
Riley Viner
Lydia Wagner

By Class

Seniors (5)

Maddie Bergh
Amanda Cartony
Melissa Doyle
Keri Pickel
Marah Sobczak

Juniors (5)

Courtney Boucher
Marissa Brandt
Carolyn Draayer
Leah Johnson

Sophomores (5)

Allison Eder-Zdechlik
Lindsey Hibbard
Tara Hoverstad
Amanda Koep
Emily Reibert

First-Years (12)

Mikaela Algren
Courtney Bethune
Halie Gudmonson
Emily Gustafson
Hannah Heacox
Callie Johnson
Allie Lewis
Courtney Potter
Katy Snyder
Megan Tragiai
Riley Viner
Lydia Wagner

2013-14 Numerical Roster

No.	Name	Yr.	Pos.	Hgt.	Hometown/High School
1	Lindsey Hibbard	So.	G	5-6	Princeton, Minn./Princeton
2	Courtney Bethune	Fy.	D	5-8	Fort Frances, Ont./Warroad
3	Emily Reibert	So.	F	5-5	Inver Grove Heights, Minn./South St. Paul
4	Maddie Bergh	Sr.	D	5-4	Eden Prairie, Minn./Benilde St. Margaret's
5	Halie Gudmonson	Fy.	F/D	5-10	Albertville, Minn./St. Michael-Albertville
6	Emily Gustafson	Fy.	F	5-1	Esko, Minn./Esko
7	Lydia Wagner	Fy.	D	5-7	Zumbrota, Minn./Zumbrota-Mazeppa
8	Allison Eder-Zdechlik	So.	F	5-4	Stillwater, Minn./Stillwater
9	Amanda Cartony	Sr.	F/D	5-7	Stillwater, Minn./Stillwater
10	Courtney Boucher	Jr.	F/D	5-7	Hastings, Minn./Hastings
11	Keri Pickel	Sr.	F	5-2	Rochester, Minn./Mayo
12	Hannah Heacox	Fy.	F	5-3	Stillwater, Minn./Stillwater
13	Mikaela Algren	Fy.	D	6-1	Prior Lake, Minn./New Prague
14	Melissa Doyle	Sr.	F	5-0	White Bear Lake, Minn./Hill-Murray
15	Leah Johnson	Jr.	F	5-4	Chanhassen, Minn./Chaska
16	Riley Viner	Fy.	F	5-2	South St. Paul, Minn./South St. Paul
17	Callie Johnson	Fy.	F	5-7	Detroit Lakes, Minn./Detroit Lakes
18	Carolyn Draayer	Jr.	F	5-6	Deephaven, Minn./Minnetonka
19	Allie Lewis	Fy.	F	5-3	Kearney, Neb./Shattuck-St. Mary's
20	Megan Tragiai	Fy.	F	5-4	Shoreview, Minn./Roseville
21	Katy Snyder	Fy.	D	5-5	Mankato, Minn./East
22	Marissa Brandt	Jr.	F/D	5-6	Vadnais Heights, Minn./Hill-Murray
24	Courtney Potter	Fy.	D	5-2	Dayton, Minn./Champlin Park
30	Amanda Koep	So.	G	5-5	St. Michael, Minn./St. Michael-Albertville
33	Tara Hoverstad	So.	G	5-3	Coon Rapids, Minn./Blaine

Head Coach: Mike Carroll (15th season)

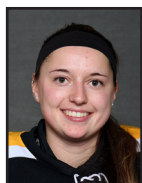
Assistant Coaches: Kirstin Peterson, Steve Carroll

Alphabetical Roster/Pronunciation Guide

NO.	NAME	Pronunciation
13	Algren, Mikaela	ALL-gren
4	Bergh, Maddie	
2	Bethune, Courtney	beth-OON
10	Boucher, Courtney	boo-SHAY
22	Brandt, Marissa	
9	Cartony, Amanda	car-TONY
14	Doyle, Melissa	
18	Draayer, Carolyn	DRAY-er
8	Eder-Zdechlik, Allison	ee-der-ZED-lick
5	Gudmonson, Halie	GUD-mun-son
6	Gustafson, Emily	GUST-uhf-son
12	Heacox, Hannah	HEE-cox
1	Hibbard, Lindsey	
33	Hoverstad, Tara	HOE-ver-stad
15	Johnson, Leah	
17	Johnson, Callie	CAL-lee
30	Koep, Amanda	COPE
19	Lewis, Allie	
11	Pickel, Keri	
24	Potter, Courtney	
3	Reibert, Emily	RYE-bert
21	Snyder, Katy	
20	Tragiai, Megan	TRA-je-ye
16	Viner, Riley	VINE-er
7	Wagner, Lydia	



Player Profiles



#1 Lindsey Hibbard
So., Goaltender
Princeton, Minn./Princeton

Season Numbers

GP	GAA	Save Pct.	Record
14	1.39	.932	7-3-1



#2 Courtney Bethune
Fy., Defender
Fort Frances, Ont./Warroad

Season Numbers

GP	Goals	Assists	Points
19	0	4	4



#3 Emily Reibert
So., Forward
Inver Grove Heights, Minn./South St. Paul

Season Numbers

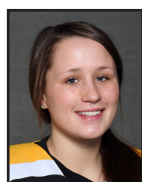
GP	Goals	Assists	Points
21	5	3	8



#4 Maddie Bergh
Sr., Defender
Eden Prairie, Minn./Benilde-St. Margaret's

Season Numbers

GP	Goals	Assists	Points
16	3	4	7



#5 Halie Gudmonson
Fy., Forward/Defender
Albertville, Minn./St. Michael-Albertville

Season Numbers

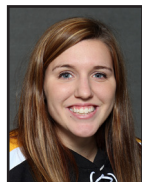
GP	Goals	Assists	Points
21	7	6	13



#6 Emily Gustafson
Fy., Forward
Esko, Minn./Esko

Season Numbers

GP	Goals	Assists	Points
18	2	3	5



#7 Lydia Wagner
Fy., Defender
Zumbrota, Minn./Zumbrota-Mazeppa

Season Numbers

GP	Goals	Assists	Points
21	3	1	4



#8 Allison Eder-Zdechlik
So., Forward
Stillwater, Minn./Stillwater

Season Numbers

GP	Goals	Assists	Points
21	17	7	24



#9 Amanda Cartony
Sr., Forward/Defender
Stillwater, Minn./Stillwater

Season Numbers

GP	Goals	Assists	Points
20	3	10	13

Player Profiles



#10 Courtney Boucher
Jr., Forward/Defender
Hastings, Minn./Hastings

Season Numbers

GP	Goals	Assists	Points
21	2	12	14



#11 Keri Pickel
Sr., Forward
Rochester, Minn./Mayo

Season Numbers

GP	Goals	Assists	Points
21	1	3	4



#12 Hannah Heacox
Fy., Forward
Stillwater, Minn./Stillwater

Season Numbers

GP	Goals	Assists	Points
18	0	0	0



#13 Mikaela Algren
Fy., Defender
Prior Lake, Minn./New Prague

Season Numbers

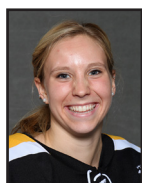
GP	Goals	Assists	Points
3	0	0	0



#14 Melissa Doyle
Sr., Forward
White Bear Lake, Minn./Hill-Murray

Season Numbers

GP	Goals	Assists	Points
21	9	9	18



#15 Leah Johnson
Jr., Forward
Chanhausen, Minn./Chanhausen

Season Numbers

GP	Goals	Assists	Points
21	2	0	2



#16 Riley Viner
Fy., Forward
South St. Paul, Minn./South St. Paul

Season Numbers

GP	Goals	Assists	Points
11	1	3	4



#17 Callie Johnson
Fy., Forward
Detroit Lakes, Minn./Detroit Lakes

Season Numbers

GP	Goals	Assists	Points
15	0	1	1



#18 Carolyn Draayer
Jr., Forward
Deephaven, Minn./Minnetonka

Season Numbers

GP	Goals	Assists	Points
21	7	5	12



Player Profiles



#19 Allie Lewis
Fy., Forward
Kearney, Neb./Shattuck-St. Mary's

Season Numbers

GP	Goals	Assists	Points
21	2	1	3



#20 Megan Tragiai
Fy., Forward
Shoreview, Minn./Roseville

Season Numbers

GP	Goals	Assists	Points
6	0	0	0



#21 Katy Snyder
Fy., Defender
Mankato, Minn./East

Season Numbers

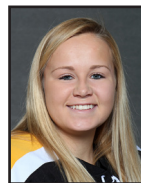
GP	Goals	Assists	Points
2	0	0	0



#22 Marissa Brandt
Jr., Forward/Defender
Vadnais Heights, Minn./Hill-Murray

Season Numbers

GP	Goals	Assists	Points
21	2	5	7



#24 Courtney Potter
Fy., Defender
Dayton, Minn./Champlin Park

Season Numbers

GP	Goals	Assists	Points
18	0	0	0



#30 Amanda Koep
So., Goaltender
St. Michael, Minn./St. Michael-Albertville

Season Numbers

GP	GAA	Save Pct.	Record
3	2.34	.857	1-1-0



#33 Tara Hoverstad
So., Goaltender
Coon Rapids, Minn./Blaine

Season Numbers

GP	GAA	Save Pct.	Record
6	2.07	.906	4-1-1

Gustavus Adolphus Hockey
Gustavus Adolphus Overall Team Statistics (as of Feb 13, 2014)
All games

Overall: 14-5-2 Conf: 12-2-0 Home: 6-3-1 Away: 8-2-1 Neut: 0-0-0

TEAM STATISTICS	GAC	OPP
SHOT STATISTICS		
Goals-Shot attempts	67-716	37-422
Shot pct.	.094	.088
Goals/Game	3.2	1.8
Shots/Game	34.1	20.1
Assists	77	34
POWER PLAYS		
Goals-Power Plays	19-93	6-73
Conversion Percent	.204	.082
Shot Attempts	173	78
Shot Percent	.110	.077
GOAL BREAKDOWN		
Total Goals	67	37
Power Play	19	6
Short-handed	4	2
Empty net	2	2
Penalty	0	0
Unassisted	14	12
Overtime	0	0
Shootout	0	0
Delayed Penalty	0	0
PENALTIES		
Number	83	102
Minutes	177	218
Penalties/Game	4.0	4.9
Pen minutes/Game	8.4	10.4
Minor	81	99
Major	1	2
10-minute Misconduct	0	0
Game Misconduct	1	1
Gross Misconduct	0	0
Match	0	0
SHOOTOUTS (Made-Att)	0-0	0-0
ATTENDANCE		
Total	1844	1719
Dates/Avg Per Date	10/184	11/156
Neutral Site #/Avg	0/0	

Goals by Period	1st	2nd	3rd	OT	Total
Gustavus Adolphus	18	24	25	0	67
Opponents	11	12	14	0	37

Saves by Period	1st	2nd	3rd	OT	Total
Gustavus Adolphus	122	123	134	6	385
Opponents	231	216	197	5	649



Gustavus Adolphus Hockey
Gustavus Adolphus Combined Team Statistics (as of Feb 13, 2014)
All games

Date	Opponent	Score	Att.	Record:	Overall	Home	Away	Neutral
Nov 02	SAINT MARY'S UNIV.	W 8-2	77	ALL GAMES	14-5-2	6-3-1	8-2-1	0-0-0
Nov 08	#9 UW-SUPERIOR	L 1-2	173	CONFERENCE	12-2-0	5-1-0	7-1-0	0-0-0
Nov 09	UW-SUPERIOR	Tot 2-2	131	NON-CONFERENCE	2-3-2	1-2-1	1-1-1	0-0-0
* Nov 15	at Concordia-Mhead	W 4-1	212					
* Nov 16	at Concordia-Mhead	W 2-0	152					
* Nov 22	at Hamline University	W 6-0	140					
* Nov 23	HAMLIN UNIVERSITY	W 4-1	251					
* Dec 06	ST. OLAF COLLEGE	W 5-2	367					
* Dec 07	at St. Olaf College	W 2-0	100					
Dec 11	at #10 UW-River Falls	Tot 2-2	163					
Dec 13	#10 UW-RIVER FALLS	L 0-3	351					
Jan 10	at #5 UW-Stevens Point	L 2-5	154					
01/11/14	at #5 UW-Stevens Point	W 2-1	122					
* 01/17/14	at Augsburg College	W 5-2	197					
* Jan 18	AUGSBURG COLLEGE	W 3-2	151					
* Jan 24	at Saint Mary's Univ.	W 4-3	212					
* Jan 25	SAINT MARY'S UNIV.	W 5-0	111					
* Jan 31	COLLEGE OF ST. BENS	L 2-4	0					
* Feb 01	at College of St. Bens	L 2-4	127					
* Feb 07	ST. CATHERINE	W 3-0	232					
* Feb 08	at St. Catherine	W 3-1	140					

TEAM STATISTICS	GAC	OPP
SHOT STATISTICS		
Goals-Shot attempts	67-716	37-422
Shot pct.	.094	.088
Goals/Game	3.2	1.8
Shots/Game	34.1	20.1
POWER PLAYS		
Goals-Power Plays	19-93	6-73
Conversion Percent	.204	.082
Shot Attempts	173	78
Shot Percent	.110	.077
GOAL BREAKDOWN		
Power Play	19	6
Short-handed	4	2
Empty net	2	2
Penalty	0	0
Unassisted	14	12
Overtime	0	0
Shootout	0	0
Delayed Penalty	0	0
PENALTIES		
Number	83	102
Minutes	177	218
Penalties/Game	4.0	4.9
Pen minutes/Game	8.4	10.4
SHOOTOUTS (Made-Att)	0-0	0-0

#	Player	gp	g	a	pts	sh	sh%	pen-min	pp	sh
8	A. Eder-Zdechlik	21	17	7	24	90	.189	3-6	5	3
14	Melissa Doyle	21	9	9	18	58	.155	3-6	1	0
10	Courtney Boucher	21	2	12	14	75	.027	15-30	1	0
5	Halie Gudmonson	21	7	6	13	53	.132	7-14	4	0
9	Amanda Cartony	20	3	10	13	33	.091	4-8	1	0
18	Carolyn Draayer	21	7	5	12	84	.083	5-10	3	1
3	Emily Reibert	21	5	3	8	48	.104	1-2	1	0
4	Maddie Bergh	16	3	4	7	35	.086	11-22	0	0
22	Marissa Brandt	21	2	5	7	21	.095	5-10	0	0
6	Emily Gustafson	18	2	3	5	25	.080	1-2	0	0
7	Lydia Wagner	21	3	1	4	54	.056	8-27	2	0
11	Keri Pickel	21	1	3	4	31	.032	3-6	0	0
16	Riley Viner	11	1	3	4	11	.091	1-2	0	0
2	Courtney Bethune	19	0	4	4	24	.000	3-6	0	0
19	Allie Lewis	21	2	1	3	19	.105	2-4	0	0
15	Leah Johnson	21	2	0	2	15	.133	5-10	0	0
23	Krystal Baumann	3	1	0	1	7	.143	0-0	1	0
17	Callie Johnson	15	0	1	1	10	.000	0-0	0	0
13	Mikaela Algren	3	0	0	0	0	.000	0-0	0	0
12	Hannah Heacox	18	0	0	0	12	.000	0-0	0	0
1	Lindsey Hibbard	14	0	0	0	0	.000	1-2	0	0
24	Courtney Potter	18	0	0	0	7	.000	3-6	0	0
21	Katy Snyder	2	0	0	0	0	.000	0-0	0	0
20	Megan Tragiai	6	0	0	0	4	.000	0-0	0	0
TM	TEAM	7	0	0	0	0	.000	2-4	0	0
	Total	21	67	77	144	716	.094	83-177	19	4
	Opponents	21	37	34	71	422	.088	102-218	6	2

#	Goalie	gp	min	ga	gaavg	saves	save%	w-l-t
1	Lindsey Hibbard	14	731:18	17	1.39	233	.932	7-3-1
35	Marah Sobczak	4	115:29	3	1.56	22	.880	2-0-0
33	Tara Hoverstad	6	318:21	11	2.07	106	.906	4-1-1
30	Amanda Koep	3	102:37	4	2.34	24	.857	1-1-0
TM	EMPTY NET	7	2:15	2	-	0	.000	0-0-0
	Total	21	1270:00	37	1.75	385	.912	14-5-2
	Opponents	21	1270:00	67	3.17	649	.906	5-14-2

Attendance Summary	GAC	Opponent
Total	1844	1719
Dates/Avg Per Date	10/184	11/156
Neutral Site #/Avg	0/0	

Goals by Period	1st	2nd	3rd	Total
Gustavus Adolphus	18	24	25	67
Opponents	11	12	14	37

Saves by Period	1st	2nd	3rd	Total
Gustavus Adolphus	122	123	134	385
Opponents	231	216	197	649

Gustavus Adolphus Hockey
Gustavus Adolphus Category Leaders (as of Feb 13, 2014)
All games

##	Points	GP	G	A	Pts	Sh
8	A. Eder-Zdechlik	21	17	7	24	90
14	Melissa Doyle	21	9	9	18	58
10	Courtney Boucher	21	2	12	14	75
5	Halie Gudmonson	21	7	6	13	53
9	Amanda Cartony	20	3	10	13	33
18	Carolyn Draayer	21	7	5	12	84
3	Emily Reibert	21	5	3	8	48
4	Maddie Bergh	16	3	4	7	35
22	Marissa Brandt	21	2	5	7	21
6	Emily Gustafson	18	2	3	5	25

##	Goals	GP	G	A	Pts	Sh
8	A. Eder-Zdechlik	21	17	7	24	90
14	Melissa Doyle	21	9	9	18	58
5	Halie Gudmonson	21	7	6	13	53
18	Carolyn Draayer	21	7	5	12	84
3	Emily Reibert	21	5	3	8	48
9	Amanda Cartony	20	3	10	13	33
4	Maddie Bergh	16	3	4	7	35
7	Lydia Wagner	21	3	1	4	54
10	Courtney Boucher	21	2	12	14	75
22	Marissa Brandt	21	2	5	7	21

##	Power-Play Goals	GP	PPG
8	A. Eder-Zdechlik	21	5
5	Halie Gudmonson	21	4
18	Carolyn Draayer	21	3
7	Lydia Wagner	21	2

##	Short-Handed Goals	GP	SHG
8	A. Eder-Zdechlik	21	3
18	Carolyn Draayer	21	1

##	Game-Winning Goals	GP	GWG
18	Carolyn Draayer	21	3
5	Halie Gudmonson	21	2
8	A. Eder-Zdechlik	21	2
6	Emily Gustafson	18	2
3	Emily Reibert	21	2

##	Plus/Minus	GP	+/-
9	Amanda Cartony	20	+17
8	A. Eder-Zdechlik	21	+16
2	Courtney Bethune	19	+14
4	Maddie Bergh	16	+9
14	Melissa Doyle	21	+8
5	Halie Gudmonson	21	+8
6	Emily Gustafson	18	+7
10	Courtney Boucher	21	+6
3	Emily Reibert	21	+5
11	Keri Pickel	21	+5

##	Assists	GP	G	A	Pts	Sh
10	Courtney Boucher	21	2	12	14	75
9	Amanda Cartony	20	3	10	13	33
14	Melissa Doyle	21	9	9	18	58
8	A. Eder-Zdechlik	21	17	7	24	90
5	Halie Gudmonson	21	7	6	13	53
18	Carolyn Draayer	21	7	5	12	84
22	Marissa Brandt	21	2	5	7	21
4	Maddie Bergh	16	3	4	7	35
2	Courtney Bethune	19	0	4	4	24
3	Emily Reibert	21	5	3	8	48

##	Shots	GP	G	A	Pts	Sh	Sh%
8	A. Eder-Zdechlik	21	17	7	24	90	.189
18	Carolyn Draayer	21	7	5	12	84	.083
10	Courtney Boucher	21	2	12	14	75	.027
14	Melissa Doyle	21	9	9	18	58	.155
7	Lydia Wagner	21	3	1	4	54	.056
5	Halie Gudmonson	21	7	6	13	53	.132
3	Emily Reibert	21	5	3	8	48	.104
4	Maddie Bergh	16	3	4	7	35	.086
9	Amanda Cartony	20	3	10	13	33	.091
11	Keri Pickel	21	1	3	4	31	.032

##	Shot Pct.	GP	G	A	Pts	Sh	Sh%
8	A. Eder-Zdechlik	21	17	7	24	90	.189
14	Melissa Doyle	21	9	9	18	58	.155
23	Krystal Baumann	3	1	0	1	7	.143
15	Leah Johnson	21	2	0	2	15	.133
5	Halie Gudmonson	21	7	6	13	53	.132
19	Allie Lewis	21	2	1	3	19	.105
3	Emily Reibert	21	5	3	8	48	.104
22	Marissa Brandt	21	2	5	7	21	.095
9	Amanda Cartony	20	3	10	13	33	.091
16	Riley Viner	11	1	3	4	11	.091

##	Penalties	GP	Pen	Min
10	Courtney Boucher	21	15	30
4	Maddie Bergh	16	11	22
7	Lydia Wagner	21	8	27
5	Halie Gudmonson	21	7	14
15	Leah Johnson	21	5	10
18	Carolyn Draayer	21	5	10
22	Marissa Brandt	21	5	10
9	Amanda Cartony	20	4	8
11	Keri Pickel	21	3	6
2	Courtney Bethune	19	3	6

##	Penalty Minutes	GP	Pen	Min
10	Courtney Boucher	21	15	30
7	Lydia Wagner	21	8	27
4	Maddie Bergh	16	11	22
5	Halie Gudmonson	21	7	14
18	Carolyn Draayer	21	5	10
15	Leah Johnson	21	5	10
22	Marissa Brandt	21	5	10
9	Amanda Cartony	20	4	8
11	Keri Pickel	21	3	6
2	Courtney Bethune	19	3	6



Gustavus Adolphus Hockey
Gustavus Adolphus Team Game-by-Game (as of Feb 13, 2014)
All games

Date	Opponent	Score	G	A	Pts	Sh	Sh%	+/-	Pen-Min	PP	SH	EN	GW	GT	Hat	UA	Blk
Nov 02, 2013	SAINT MARY'S UNIV.	8-2	8	11	19	36	.222	+13	5-10	3	1	0	1	0	0	0	8
Nov 08, 2013	UW-SUPERIOR	1-2	1	1	2	22	.045	-4	7-14	0	0	0	0	0	0	0	10
Nov 09, 2013	UW-SUPERIOR	2-2	2	1	3	43	.047	-5	3-6	1	0	0	0	0	0	1	15
Nov 15, 2013	at Concordia-M'head	4-1	4	4	8	35	.114	+15	3-6	1	0	0	1	0	0	1	1
Nov 16, 2013	at Concordia-M'head	2-0	2	1	3	34	.059	+10	2-4	0	0	1	1	0	0	1	3
Nov 22, 2013	at Hamline University	6-0	6	8	14	48	.125	+25	1-2	1	0	0	1	0	0	1	5
Nov 23, 2013	HAMLIN UNIVERSITY	4-1	4	8	12	41	.098	+10	4-8	2	0	0	1	0	0	0	7
Dec 06, 2013	ST. OLAF COLLEGE	5-2	5	8	13	33	.152	+10	2-4	1	0	1	1	0	0	0	8
Dec 07, 2013	at St. Olaf College	2-0	2	4	6	47	.043	+6	2-4	0	0	0	1	0	0	0	0
Dec 11, 2013	at UW-River Falls	2-2	2	3	5	25	.080	-10	3-6	2	0	0	0	1	0	0	17
Dec 13, 2013	UW-RIVER FALLS	0-3	0	0	0	25	.000	-16	2-4	0	0	0	0	0	0	0	4
Jan 10, 2014	at UW-Stevens Point	2-5	2	3	5	32	.062	+2	2-4	1	1	0	0	0	0	0	13
01/11/14	at UW-Stevens Point	2-1	2	1	3	24	.083	+3	5-10	0	0	0	1	0	0	1	23
01/17/14	at Augsburg College	5-2	5	6	11	32	.156	+14	4-8	1	1	0	1	0	0	1	9
Jan 18, 2014	AUGSBURG COLLEGE	3-2	3	3	6	32	.094	+5	5-10	1	0	0	1	0	0	0	5
Jan 24, 2014	at Saint Mary's Univ.	4-3	4	4	8	40	.100	-5	5-21	2	0	0	1	0	0	1	5
Jan 25, 2014	SAINT MARY'S UNIV.	5-0	5	3	8	32	.156	+24	4-8	0	1	0	1	0	0	3	8
Jan 31, 2014	COLLEGE OF ST. BENS	2-4	2	2	4	41	.049	0	3-6	0	0	0	0	0	0	1	7
Feb 01, 2014	at College of St. Bens	2-4	2	2	4	36	.056	-21	6-12	2	0	0	0	0	0	0	6
Feb 07, 2014	ST. CATHERINE	3-0	3	3	6	26	.115	+10	8-16	1	0	0	1	0	0	1	5
Feb 08, 2014	at St. Catherine	3-1	3	1	4	32	.094	+10	7-14	0	0	0	1	0	0	2	0
		67-37	67	77	144	716	.094	+96	83-177	19	4	2	14	1	0	14	159
Opponent			37	34	71	422	.088	-81	102-218	6	2	2	5	1	1	12	219

TEAM PER-GAME

Games played: 21

Shots per game: 34.10; Goals per game: 3.19

Assists per game: 3.67; Points per game: 6.86