



# GUSTAVUS ADOLPHUS COLLEGE

## 2013-14 MEN'S HOCKEY GAME NOTES

### 2013-14 GUSTAVUS SCHEDULE

DATE	OPPONENT	TIME/RESULT
11/1	Bethel University#	W 2-1
11/3	University of St. Thomas#	L 3-5
11/8	UW-Stevens Point	L 4-8
11/9	UW-Stout	W 3-1
11/15	<b>CONCORDIA COLLEGE*</b>	<b>L 1-3</b>
11/16	<b>CONCORDIA COLLEGE*</b>	<b>W 3-1</b>
11/22	<b>HAMLINE UNIVERSITY*</b>	<b>W 5-2</b>
11/23	Hamline University*	W 5-1
11/29	Lawrence University%	T 6-6
11/30	Marian University%	W 3-2
12/6	St. Olaf College*	7:30 p.m.
12/7	<b>ST. OLAF COLLEGE*</b>	<b>7:05 p.m.</b>
1/10	<b>LAKE FOREST COLLEGE</b>	<b>7:05 p.m.</b>
1/11	<b>ADRIAN COLLEGE</b>	<b>7:05 p.m.</b>
1/17	<b>AUGSBURG COLLEGE*</b>	<b>7:05 p.m.</b>
1/18	Augsburg College*	7:05 p.m.
1/24	<b>SAINT MARY'S UNIVERSITY*</b>	<b>7:05 p.m.</b>
1/25	Saint Mary's University*	7:00 p.m.
1/31	<b>SAINT JOHN'S UNIVERSITY*</b>	<b>8:05 p.m.</b>
2/1	Saint John's University*	7:00 p.m.
2/7	UW-River Falls	7:05 p.m.
2/14	University of St. Thomas*	7:30 p.m.
2/15	<b>UNIVERSITY OF ST. THOMAS*</b>	<b>7:05 p.m.</b>
2/21	<b>BETHEL UNIVERSITY*</b>	<b>7:05 p.m.</b>
2/22	Bethel University*	7:00 p.m.

*HOME GAMES in BOLD FACE CAPS; all times Central*

*\* MIAC game*

*# MIAC Showcase (Blaine, Minn.)*

*% MIAC/NCHA Showcase (Appleton, Wis.)*

### GUSTAVUS QUICK FACTS

<b>Location:</b>	St. Peter, Minnesota
<b>Address:</b>	800 West College Ave. St. Peter, MN 56082
<b>Founded:</b>	1862
<b>Enrollment:</b>	2,500
<b>Nickname:</b>	Golden Gusties
<b>School Colors:</b>	Black and Gold
<b>Home Arena:</b>	Don Roberts Ice Rink
<b>Conference:</b>	Minnesota Intercollegiate Athletic
<b>NCAA Affiliation:</b>	NCAA Division III
<b>President:</b>	Jack R. Ohle
<b>Athletic Director:</b>	Tom Brown
<b>Assistant Athletic Director:</b>	Jared Phillips
<b>Athletic Trainer:</b>	Troy Banse
<b>Equipment Manager:</b>	Wayne Norman
<b>Sports Information Director:</b>	Ethan Armstrong
<b>Sports Information Graduate Assistant:</b>	Tyler Grey

### GUSTAVUS ADOLPHUS COLLEGE

"Golden Gusties"

6-3-1 Overall, 3-1-0 MIAC

### ST. OLAF COLLEGE

"Oles"

3-6-1 Overall, 1-2-1 MIAC

### GAME 11

#### GAME INFORMATION

**DATE:** Friday, Dec. 6

**TIME:** 7:30 p.m.

**SITE:** Northfield, Minn.

**ARENA:** Northfield Ice Arena

**WEB VIDEO:** None

**LIVE STATS:** None

### GAME 12

#### GAME INFORMATION

**DATE:** Saturday, Dec. 7

**TIME:** 7:05 p.m.

**SITE:** St. Peter, Minnesota

**ARENA:** Don Roberts Ice Rink

**WEB VIDEO:** <http://client.stretchinternet.com/client/gacadmin.portal>

**LIVE STATS:** <https://gustavus.edu/athletics/hky/LIVE/xlive.htm>

#### SETTING THE SCENE

The Gustavus Adolphus men's hockey team will take on the Oles of St. Olaf College in a home/home series this weekend.

The Gusties and Oles will kick off the series on Friday, Dec. 6 at 7:30 p.m. at the Northfield Ice Arena in Northfield. The two teams will then cap the weekend on Saturday, Dec. 7 with a 7:05 p.m. game at Don Roberts Ice Rink in St. Peter.

Gustavus enters the weekend with an overall record of 6-3-1 and an MIAC mark of 3-1-0. The Gusties were in action last weekend at the NCHA/MIAC Thanksgiving Showdown where they went 1-0-1 with a 6-6 tie against Lawrence and a 3-2 win over Marian.

St. Olaf was also busy last weekend at the NCHA/MIAC Thanksgiving Showdown. The Oles picked up a pair of victories with a 4-3 win over Marian and a 5-1 win over Lawrence. St. Olaf comes into this weekend's series at 3-6-1 overall and 1-2-1 in the MIAC.



**TWITTER**  
[@GustieAthletics](https://twitter.com/GustieAthletics)



**FACEBOOK**  
[facebook.com/GustieAthletics](https://facebook.com/GustieAthletics)



**GAME CENTRAL**  
[client.stretchinternet.com/client/gac.portal](http://client.stretchinternet.com/client/gac.portal)



**YOUTUBE**  
[youtube.com/gustavusathletics](https://youtube.com/gustavusathletics)



**INSTAGRAM**  
[instagram.com/gustieathletics](https://instagram.com/gustieathletics)



**FLICKR**  
[flickr.com/photos/gogusties](https://flickr.com/photos/gogusties)

#### MEN'S HOCKEY MEDIA CONTACT

**Sports Information Director:** Ethan Armstrong

**Email:** [earmstr2@gac.edu](mailto:earmstr2@gac.edu) • **Cell:** 320-815-2351 • **Office:** 507-933-7647

## 14-TIME MIAC CHAMPION



## 2013-14 GUSTAVUS ADOLPHUS MEN'S HOCKEY GAME NOTES

### STATISTICAL COMPARISON

Gustavus		St. Olaf
3.50 (2nd)	Goals For	2.30 (6th)
3.00 (6th)	Goals Against	3.50 (7th)
8.9%-4/45 (9th)	Power Play	17.5%-7/40 (3rd)
83.7%-36/43 (6th)	Penalty Kill	80.4%-37/46 (7th)
45.5%-40/88 (7th)	Combined Special Teams	51.2%-44/86 (3rd)
14.1 (6th)	Penalty Minutes	21.1 (1st)

- Overall per game averages with MIAC rank

### THE SERIES

#### VS. ST. OLAF

All-Time	61-25-5
Last Meeting	W 3-2 (2/22/13)
Current Streak	W - 4

<b>Head Coach Brett Petersen</b>	
Record at Gustavus	188-144-29
vs. St. Olaf	18-10-4

<b>Head Coach Sean Goldsworthy</b>	
Record at St. Olaf	173-199-51
vs. Gustavus	12-25-4

<b>Last Ten</b>		<b>6-2-2</b>
<b><u>Date</u></b>	<b><u>Location</u></b>	<b><u>Result</u></b>
2/22/13	Don Roberts Ice Rink	W 3-2 (MIAC Semifinals)
2/16/13	Northfield Ice Arena	W 2-0
2/15/13	Don Roberts Ice Rink	W 4-1
3/3/12	Don Roberts Ice Rink	W 4-2 (MIAC Final)
2/18/12	Don Roberts Ice Rink	T 3-3 OT
2/17/12	Northfield Ice Arena	W 3-2
1/7/11	Northfield Ice Arena	L 3-4
11/13/10	Don Roberts Ice Rink	T 3-3
11/12/10	Northfield Ice Arena	W 5-2
1/8/10	Northfield Ice Arena	L 1-2

### CAREER SCORING VS. ST. OLAF

Player	Games	Goals	Assists	Points
Adam Smyth	9	6	1	7
Zach May	9	2	3	5
Nate Paulsen	6	1	4	5
Jack Walsh	6	3	2	5
Gustav Bengtson	5	2	2	4
Andy Pearson	6	1	2	3
Tyler Lopic	3	2	1	3
Corey Leivermann	3	0	2	2
Alex Gallen	6	0	1	1
Darren Lopic	3	1	0	1
Blake Schammel	4	0	0	0
Schlyer Adams	3	0	0	0
Joey Olson	3	0	0	0
Sam Smith	2	0	0	0

Goaltending	Record	Min.	GA	Saves
John McLean	2-0-0	120:00	3	45

### GAME NOTES

#### LIVE COVERAGE

Live video and live stats for Saturday night's game against will be provided via the links below.

#### Live Video

<http://client.stretchinternet.com/client/gacadmin.portal>

#### Live Stats

<https://gustavus.edu/athletics/hky/LIVE/xlive.htm>

#### GUSTAVUS EMBARKS ON 72ND SEASON OF MEN'S HOCKEY

The Gustavus men's hockey team is currently in its 72nd season of existence. One of the storied programs in collegiate hockey, Gustavus has compiled an all-time record of 839-614-65 overall and 554-422-41 in the MIAC. Gustavus first recognized a men's hockey team in 1937 when then Director of Physical Education George Myrum became interested in the sport and raised the funds to sponsor a team. The Gusties fell to Carleton in their first ever intercollegiate game in 1936. It would take until 1939, the first year Gustavus played on natural ice in the on-campus fieldhouse, for Gustavus to record the first victory in the program's history.

#### GUSTAVUS COACHING STAFF

Head Coach Brett Petersen is in his 14th season at the helm of the Gustavus men's hockey program. Petersen has compiled a 188-144-29 overall record in his 13-plus seasons at Gustavus. His 188 wins at Gustavus ranks second behind legendary coach Don Roberts. He has been named MIAC Coach of the Year twice in his tenure, once in 2001-02 and again in 2009-10. Petersen, a Roseville, Minn. native, received his Bachelor of Science degree in business administration from the University of Denver in 1992 and his Master of Science degree in athletic administration in 2000 from St. Cloud State.

Former men's hockey standout David Martinson is in his second season as the assistant men's hockey coach at Gustavus. A 2010 graduate and one of the most decorated hockey players to don a three crowned sweater, Martinson is a native of St. Louis Park, Minn. After being named the MIAC Player of the Year and earning All-America honors twice during his playing career, Martinson continued his education at the Bowling Green State University where he served as a graduate assistant for the men's hockey team. In the fall of 2012, David received his masters of education in sport administration.

#### HOCKEY ALUM ENTERS THE HALL IN 2013

Former Gustavus men's hockey player Dave Newcomer was inducted into the Gustavus Athletics Hall of Fame on Nov. 2. A keen leader and lanky center, Newcomer brought finesse and style to one of the most prolific scoring lines in Gustavus men's hockey history from 1987 to 1991. Newcomer carved up defenses and gave opposing goaltenders nightmares with his quick hands, stick handling, and pin-point accuracy. Paired with Scott Reddy '91 and Mike Gempeler '91, the "Newcomer-Gempeler-Reddy line" skated together for four seasons, scoring a combined 500 points (212 goals, 288 assists). Newcomer ranks sixth in program history in points with 177, ninth in goals with 74 and third in assists with 103. He garnered all-conference accolades three times (1989, 1990, 1991) including being named the MIAC Player-of-the-Year in 1991. He was also selected to the American Hockey Coaches Association All-America Second Team in 1991. Newcomer's durability allowed him to play in all 118 games of his career, which ranks second in Golden Gustie history.

#### ST. OLAF HEAD COACH SEAN GOLDSWORTHY

Sean Goldsworthy is in his 17th season as head men's hockey coach at St. Olaf. A 1994 graduate of St. Olaf, Goldsworthy played professional hockey in the CHL with San Antonio and Memphis. He became the assistant men's hockey coach at Saint John's in 1996 and later earned his masters degree from St. Cloud State University 1997. Goldsworthy accepted the head job at St. Olaf in 1997 and has compiled an overall record of 173-199-51 up to this point.

#### AROUND THE GLOBE

Gustavus's 2013-14 roster features 28 players from seven different states and two different countries other than the United States of America. Within the United States, Minnesota (19), California (1), Florida (1), Massachusetts (1), North Dakota (1), Oklahoma (1), and Vermont (1) are represented by 25 players. Outside the U.S., the Canadian province of British Columbia is home to both Sam Smith (Jr., Vancouver, B.C.) and Patrick Sullivan (Sr., Kelowna, B.C.), while Sweden is home to Gustav Bengtson (Sr., Sollentuna, Sweden).

#### PRIOR EXPERIENCE

Brett Petersen's 2013-14 Gustie squad consists of 26 players with prior junior hockey experience. Those 26 players come from 23 different junior hockey teams that hail from nine different leagues. Nine of Gustavus's players are



## 2013-14 GUSTAVUS ADOLPHUS MEN'S HOCKEY GAME NOTES

### GUSTAVUS HOCKEY FACTS

<b>2012-13 Record:</b>	17-8-3
<b>2012-13 MIAC Record/Finish:</b>	9-5-2/Fourth
<b>All-Time Record:</b>	839-614-65
<b>All-Time MIAC Record:</b>	554-422-41
<b>MIAC Championships :</b>	14
<b>Lettermen Returning/Lost:</b>	15/13
<b>All-MIAC Honorees Returning/Lost:</b>	1/0

### GUSTAVUS' RECORD WHEN...

At home	2-1-0
On the road	2-1-1
Neutral Site	2-1-0
GAC scores 4 or more goals	2-1-1
GAC scores 3 goals	3-1-0
GAC scores 2 or fewer goals	1-1-0
GAC scores first	6-0-1
Opponent scores first	0-3-0
GAC leads after 1st period	4-0-0
Opponent leads after 1st period	0-2-1
Tied after 1st period	2-1-0
GAC leads after 2nd period	5-0-0
Opponent leads after 2nd period	1-3-0
Tied after 2nd period	0-0-0
Games decided by one goal	2-0
Games decided by two goals	2-2
Games decided by three goals	1-0
Games decided by four or more	1-1
GAC scores on the power play	3-1-0
GAC scoreless on the power play	3-2-1
GAC scores two or more PP goals	0-0-0
GAC outshoots opponent	5-2-1
GAC outshot by opponent	1-1-0
Shots equal	0-0-0
Friday	2-2-1
Saturday	4-0-0
Sunday	0-1-0
In November	6-3-1
In December	0-0-0
In January	0-0-0
In February	0-0-0
In March	0-0-0
Following a win	2-2-1
Following a loss	2-1-0
Following a tie	1-0-0

### GAME NOTES

alums of the North American Hockey League, four played in the Eastern Junior Hockey League, and three played in the Superior International Junior Hockey League. The United States Hockey League (2), Western States Hockey League (2), North American Tier III Hockey League (1), British Columbia Hockey League (1), Central Canada Hockey League (1), and the Minnesota Junior Hockey League (1) make up the rest of the leagues represented on Gustavus's roster. Gustavus seniors Joey Olson (Warroad, Minn.) and Adam Smyth (Burnsville, Minn.) are the only two players on this year's team to make the jump straight from high school to the collegiate ranks.

#### CAPTAIN'S LOG: 2013-14

In the 71 year history of Gustavus men's hockey, 85 players have earned the right to wear a "C" on their chest for the Black and Gold. Senior Corey Leivermann (North Mankato, Minn.) and junior Jack Walsh (Mahtomedi, Minn.) serve as captains of this year's team, becoming the 86th and 87th in the history of the program.

#### LETTERWINNERS AND FRESH FACES

Brett Petersen returned 15 letterwinners from last year's team that went 17-8-3 overall (9-5-2 MIAC) and advanced to the MIAC Playoff Championship. To go along with his 15 returning letterwinners, coach Petersen also welcomes 11 new players to the program. Nine of the fresh faces are freshman while the other two are transfers from schools in the WIAC. This year's freshman class includes Jared Docken (Northfield, Minn.), Drew Apsinwall (Maple Grove, Minn.), Tony Paulson (Maple Grove, Minn.), Sam Akins (Stowe, Vt.), Sam Majka (Wayzata, Minn.), Blake Barnes (Broken Arrow, Okla.), Ross Kovacs (Dickinson, N.D.), Joncarlo Westerlund (Baudette, Minn.), and Erik Johnson (Rice, Minn.). Gavin Tufte (So., Blaine, Minn.) is a transfer from UW-Stout, and Alec Austin (So., Fort Lauderdale, Fla.) is a transfer from UW-Superior.

#### ABOUT LAST WEEKEND

The Gustavus men's hockey team went 1-0-1 at the NCHA/MIAC Thanksgiving showdown held last weekend at the Appleton Family Ice Center in Appleton, Wis. The Gusties skated to a 6-6 tie against Lawrence University on Friday night, then came back on Saturday with a 3-2 win over Marian University.

In Friday night's back-and-forth, high-scoring affair with Lawrence, Gustavus's Zach May scored the game's opening goal in the third minute of the game. The Vikings answered with five unanswered goals - two in the first period and three in the second - to go up 5-1.

Gustavus would not go quietly into the night and responded with three goals in the final six minutes of the second period to cut the lead to 5-4. The Gusties scored two more goals inside the opening five minutes of the third period to cap of a five-goal scoring-spree of their own. Gustavus received two goals from Nate Paulsen, and one each from Jack Walsh, Tyler Lopic, and Corey Leivermann.

Trailing 6-5 in the final seconds of the game, Lawrence pulled its goalie and got the equalizer from Blake Roubos with just :09 seconds remaining in regulation. Neither team could find the game-winner in overtime, as Gustie goalie John McLean earned the tie after making a total of 31 saves.

The Gusties scored first on Saturday afternoon against Marian as well when Corey Leivermann netted a goal in the fifth minute of the opening frame. The Sabres answered with a pair of second period goals by Matt Williams to grab a 2-1 lead heading into the third. Gustavus bounced back with goals by Tony Paulson and Drew Apsinwall in the third period on the way to the one-goal victory.

Rookie netminder Erik Johnson earned his first collegiate win in a full game effort. Johnson stopped 23-of-25 shots, ten of which came in the third period.

Brett Petersen's squad saw its penalty killing streak end at 11 on Friday night when Lawrence went 2-for-8 on the man-advantage. The Gusties struggled on their own power play with an 0-for-8 showing on the weekend. Gustavus has failed to convert on its last 11 power play tries heading into the St. Olaf series.

#### THE SERIES

This weekend's games will be the 92nd and 93rd meetings between Gustavus and St. Olaf in men's hockey. Gustavus holds the advantage in the all-time series with a record of 61-25-5, and has won the past four meetings.

St. Olaf seeks redemption this weekend after Gustavus ended its 2012-13 season with a 3-2 win at Don Roberts Ice Rink in the MIAC Playoff Semifinals. Gustavus also swept the Oles in last year's regular season series with a 4-1 win on Friday night in St. Peter and a 2-0 victory on Saturday in Northfield.





## 2013-14 GUSTAVUS ADOLPHUS MEN'S HOCKEY GAME NOTES

### 2013-14 MIAC STANDINGS

SCHOOL	POINTS	MIAC	OVERALL
St. Thomas	11	3-0-1	6-1-1
Concordia	9	3-1-0	6-2-0
<b>Gustavus</b>	<b>9</b>	<b>3-1-0</b>	<b>6-3-1</b>
Saint John's	6	2-2-0	4-4-0
Augsburg	4	1-0-1	7-0-1
St. Olaf	4	1-2-1	3-6-1
Saint Mary's	3	1-3-0	5-5-0
Bethel	2	0-3-1	0-8-2
Hamline	0	0-2-0	0-7-1

### AROUND THE MIAC

#### Friday, Dec. 6

St. Thomas at Concordia | 7:00 p.m.  
Bethel at Hamline | 7:05 p.m.  
Saint John's at Augsburg | 7:05 p.m.  
Gustavus at St. Olaf | 7:30 p.m.

#### Saturday, Dec. 7

St. Thomas at Concordia | 2:00 p.m.  
Hamline at Bethel | 7:00 p.m.  
Augsburg at Saint John's | 7:00 p.m.  
St. Olaf at Gustavus | 7:05 p.m.

### USCHO.COM DIII MEN'S POLL

No.	Team	Record	Points	Last Poll
1	Plattsburgh (11)	8-0-1	282	3
2	St. Norbert (6)	9-1-0	276	1
3	Adrian (2)	9-0-0	259	5
4	Wisconsin-Stevens Point (1)	8-0-0	242	6
5	Norwich	5-1-2	210	2
6	Babson	8-1-0	180	7
7	Wisconsin-Eau Claire	5-2-0	175	4
8	St. Thomas	6-1-1	144	9
9	Williams	4-0-1	126	12
10	St. Scholastica	6-1-2	119	13
11	Utica	7-2-1	109	8
12	Amherst	5-1-0	88	10
13	Oswego	4-2-0	61	11
14	Geneseo	6-2-0	41	14
15	Augsburg	7-0-1	37	NR

### D3HOCKEY.COM DIII MEN'S POLL

No.	Team	Record	Points	Last Poll
1	Plattsburgh State (14)	8-0-1	291	2
2	UW-Stevens Point (4)	8-0-0	278	3
3	St. Norbert (1)	9-1-0	252	1
4	Adrian (1)	9-0-0	251	4
5	Babson	8-1-0	193	7
6	Williams	4-0-1	186	9
7	UW-Eau Claire	5-2-0	172	5
8	Norwich	5-1-2	137	6
9	Utica	7-2-1	121	8
10	Amherst	5-1-0	98	11
11	Middlebury	3-1-2	91	10
12	Geneseo State	6-2-0	89	12
13	St. Thomas	6-1-1	88	13
14	Augsburg	7-0-1	61	14
15	St. Scholastica	6-1-2	47	NR

### GAME NOTES

#### SCOUTING THE OLES

Just like Gustavus, the St. Olaf men's hockey team was in action last weekend at the NCHA/MIAC Thanksgiving Showdown. The Oles earned a pair of victories in Appleton with a 4-3 win over Marian on Friday and a 5-1 win over Lawrence on Saturday.

After beginning the year with four straight losses, St. Olaf has gone 3-2-1 over its last six games and is currently tied for fifth place in the league standings with four points and a 1-2-1 mark in MIAC play.

Senior forward Dan Cecka has emerged as the team's top scorer through the opening ten games of the season with nine points on six goals and three assists. Sophomore forward David Rath sits next in line with six points (3G, 3A), while fellow second-year forwards Peter Linblad (4G, 1A) and Mark Rath (1G, 4A) both have five points.

St. Olaf is scoring an average of 2.3 goals per game (6th/MIAC), and are hitting at a 17.5-percent rate (3rd/MIAC) on the power play. Defensively, the Oles are allowing 3.5 goals per game (7th/MIAC), and have killed penalties at an 80.4-percent clip (7th/MIAC).

Junior Steve Papciak has done most of the goaltending so far with 422:05 minutes under his belt. He is 2-4-1 with an .898 save percentage and a 2.84 goals against average. Senior Henrik Wood was in net on Saturday against Lawrence, stopping 23-of-24 shots on the way to his first win of the season. Wood is 1-2-0 with an .871 save percentage and a 4.03 goals against average.

#### STILL STREAKING

With goals against both Lawrence and Marian last weekend, senior forward Corey Leivermann extended his point-streak to six games. Leivermann has registered four goals (2 short-handed) and three assists for seven points inside the streak.

With a total of 13 points (7G, 6A) on the season, Leivermann is the MIAC's leading scorer. He sits ahead of Augsburg's Nicholas Widing and Bethel's Brock Raffaele who both have 11 points. Leivermann's seven goals is also tied for the most the league.

#### THIRD PERIOD SCORING

The Gustie men's hockey team used a pair of strong third period performances at last weekend's NCHA/MIAC Thanksgiving Showdown. On Friday night against Lawrence, Gustavus scored twice in the third period to take a 6-5 lead after being down 5-1 in the second period. Trailing 2-1 after two periods on Saturday against Marian, the Gusties scored twice in the final frame to allow them the 3-2 win.

Winning the third period has been a point of pride for the Black and Gold so far this season. Of Gustavus's 35 goals, a league-best 16 have come in the third period alone.

#### CAPPING THE FIRST HALF

Gustavus will close out the first half of its 2013-14 campaign with this weekend's series against St. Olaf. Under the direction of Brett Petersen, Gustavus has compiled a record of 83-72-9 before the holiday break. In the previous five seasons, Gustavus has averaged 7.4 wins in the opening half of its schedule.

#### BY THE NUMBERS

**62** - The season-high number of shots on goal recorded by Gustavus last weekend against Lawrence. It is the highest shot total by a Gustavus team since Feb. 22, 2008 when Gustavus posted 61 shots in a 6-1 victory over Concordia.

**4-0-0** - Gustavus's record in Saturday games this season. The Gusties are scoring an average of 3.5 goals per game while holding opponents to just 1.25 goals on Saturdays.

**1** - The number of power play goals Gustavus has allowed to conference opponents this season. The Gusties have killed 13-of-14 power plays over the course of their first four league games.

**+7** - The team-best rating of senior Jack Walsh. He is +5 over Gustavus's last five games.

**25.7** - The number of shots Gustavus is allowing per game. The Gusties are averaging 35.6 shots, nearly ten shots more than their opponents.



## 2013-14 GUSTAVUS ADOLPHUS MEN'S HOCKEY GAME NOTES

### HEAD COACH BRETT PETERSEN

#### 14th Season

**188-144-29 at Gustavus**

**Office: 507-933-7615**

**Email: bpeters4@gustavus.edu**



Brett Petersen is currently in his 14th season as the head coach of the Gustavus Adolphus men's hockey team.

Despite another late-season surge that saw the Gustavus men's hockey team go 10-2-2 after the holiday break, the Gusties missed out on a trip to the NCAA Tournament after falling to Saint John's 3-2 in the MIAC Playoff Championship. Gustavus, who began the year 0-4-0 in the MIAC, earned the fourth seed in the MIAC Playoffs after a late push in conference play over January and February. In the conference tournament, the Gusties defeated St. Olaf (3-2) in the first round and St. Thomas (1-0) in the semifinals to earn a trip to the championship game for the fourth time in the last five seasons. Petersen's club finished 17-8-3 overall and 9-5-2 in the MIAC.

In his 13-plus year tenure behind the Gustavus bench, Petersen has compiled a 188-144-29 overall record. His 188 wins at Gustavus ranks second behind legendary coach Don Roberts. He has been named MIAC Coach of the Year twice, once in 2001-02 after helping the Gusties make the jump from ninth place the year before to a second place finish in the conference, and again in 2009-10 after leading the Gusties to their first MIAC Title since 1993. While at Gustavus, Petersen has worked with 16 All-Conference players, three MIAC Player of the Year recipients, seven All-Americans and one National Player of the Year (David Martinson, 2010).

Within MIAC play, Gustavus holds a record 115-77-20 during the Petersen era. The Gusties have earned a trip to the MIAC Playoffs 12 straight seasons and have advanced to the MIAC Playoff Championship a total of five times under Petersen. Since the turn of the century, Gustavus has qualified for the NCAA Division III Tournament three times in 2009, 2010, and 2012. The Gusties advanced all the way to the NCAA Championship in 2009 where they fell to Neumann 4-1 at Herb Brooks Arena in Lake Placid, N.Y.

Petersen, a Roseville, Minnesota native, started his coaching career with the St. Paul Vulcans of the United States Hockey League (USHL) from 1992-1994. He was named assistant coach at St. Cloud State University of the Western Collegiate Hockey Association (WCHA) in the spring of 1994. During his six years at St. Cloud State, he coordinated the recruiting process for head coach Craig Dahl, while also being closely involved with practice planning, player development and bench coaching.

In the classroom, Petersen received his Bachelor of Science degree in business administration from the University of Denver in 1992 and his Master of Science degree in athletic administration in 2000 from St. Cloud State. He was a four-year letter winner in hockey while at Denver and was named to the WCHA All-Academic team for three years. Petersen served as the team's assistant captain during his junior and senior seasons.

Petersen had the opportunity to represent USA Hockey on several difference occasions during his playing career including the U.S. Olympic Festival in Oklahoma City in 1990 and the World University Games in Sapporo, Japan in 1991. He was drafted by the Calgary Flames of the National Hockey League (NHL), but did not play professional hockey.

Along with this coaching duties at Gustavus, Petersen's responsibilities include managing Lund Arena, the College's multi-purpose facility that houses the ice sheet from October through March for team practices and games. The facility is then used for physical education classes, concerts and conventions the rest of the year.

Brett lives in St. Peter with his wife, Linda, and their daughters, Katherine and Natalie.

### THE PETERSEN FILE

Hometown	Coaching	Year	Overall	MIAC	Finish
• Roseville, Minnesota	• 1992-94 - Assistant Coach, St. Paul Vulcans (USHL)	2000-01	6-16-3	3-11-2	9th
		2001-02	14-9-4	9-4-4	2nd
<b>Education</b>	• 1994-00 - Assistant Coach, St. Cloud State (WCHA)	2002-03	14-12-1	8-7-1	4th
		2003-04	12-11-3	9-5-2	3rd
• Bachelor's Degree: Business Administration (Denver `92)	<b>Coaching Awards</b>	2004-05	10-14-1	7-8-1	T-5th
		2005-06	14-11-1	9-7-0	5th
• Master's Degree: Sport Administration (St. Cloud State `00)	• MIAC Coach of the Year - 2002, 2010	2006-07	11-13-2	9-6-1	5th
		2007-08	13-12-1	10-6-0	4th
<b>Family</b>	<b>NCAA Appearances</b>	2008-09	19-11-0	10-6-0	T-2nd
		2009-10	20-7-2	12-2-2	1st
• Wife, Linda; daughters Katherine and Natalie.	<b>MIAC Titles</b>	2010-11	15-10-2	8-6-2	T-4th
		2011-12	17-7-5	8-5-3	2nd
		2012-13	17-8-3	9-5-2	4th
		2013-14	6-3-1	3-1-0	
		<b>TOTALS</b>	<b>188-144-29</b>	<b>115-77-20</b>	



## 2013-14 GUSTAVUS ADOLPHUS MEN'S HOCKEY GAME NOTES

### GAME 2013-14 GUSTAVUS TEAM SUPERLATIVES

**Largest Margin of Victory:** 4, 5-1 win vs. Hamline (Nov. 23)

**Largest Margin of Defeat:** 4, 8-4 vs. UW-Stevens Point (Nov. 8)

**Most Goals, Game:** 6, 6-6 tie vs. Lawrence (Nov. 29)

**Most Goals, 1st Period:** 2, 3-1 win vs. Concordia (Nov. 16)

**Most Goals, 2nd Period:** 3, 6-6 tie vs. Lawrence (Nov. 29)

**Most Goals, 3rd Period:** 2, (7x), most recent 3-2 win vs. Marian (Nov. 30)

**Most Goals Allowed, 1st Period:** 3, 8-4 loss vs. UW-Stevens Point (Nov. 8)

**Most Goals Allowed, 2nd Period:** 3 (2x), most recent 6-6 tie vs. Lawrence (Nov. 29)

**Most Goals Allowed, 3rd Period:** 2, (2x), most recent 8-4 loss vs. UW-Stevens Point (Nov. 8)

**Most Shots, Game:** 62, 6-6 tie vs. Lawrence (Nov. 29)

**Most Shots, 1st Period:** 17, 6-6 tie vs. Lawrence (Nov. 29)

**Most Shots, 2nd Period:** 23, 6-6 tie vs. Lawrence (Nov. 29)

**Most Shots, 3rd Period:** 17 (2x), most recent 6-6 tie vs. Lawrence (Nov. 29)

**Most Shots, OT:** 5, 6-6 tie vs. Lawrence (Nov. 29)

**Most Shots Allowed, Game:** 37, 6-6 tie vs. Lawrence (Nov. 29)

**Most Shots Allowed, 1st Period:** 17, 8-4 loss vs. UW-Stevens Point (Nov. 8)

**Most Shots Allowed, 2nd Period:** 16, 6-6 tie vs. Lawrence (Nov. 29)

**Most Shots Allowed, 3rd Period:** 13, 3-1 win vs. UW-Stout (Nov. 9)

**Most Shots Allowed, OT:** 2, 6-6 tie vs. Lawrence (Nov. 29)

**Fewest Shots, Game:** 16, 5-2 win vs. Hamline (Nov. 22)

**Fewest Shots, Regulation Period:** 2, first period of 3-1 win vs. UW-Stout (Nov. 9)

**Fewest Shots, 1st Period:** 2, 3-1 win vs. UW-Stout (Nov. 9)

**Fewest Shots, 2nd Period:** 4, 5-3 loss vs. St. Thomas (Nov. 3)

**Fewest Shots, 3rd Period:** 7 (2x), most recent 3-2 win vs. Marian (Nov. 30)

**Fewest Shots, OT:** N/A

**Fewest Shots Allowed, Game:** 21, 2-1 win vs. Bethel (Nov. 1)

**Fewest Shots Allowed, Regulation Period:** 1, second period of 2-1 win vs. Bethel (Nov. 1)

**Fewest Shots Allowed, 1st Period:** 4, 5-1 win vs. Hamline (Nov. 23)

**Fewest Shots Allowed, 2nd Period:** 1, 2-1 win vs. Bethel (Nov. 1)

**Fewest Shots Allowed, 3rd Period:** 3, (2x), most recent 3-1 loss vs. Concordia (Nov. 15)

**Fewest Shots Allowed, OT:** N/A

**Most PIM, Game:** 26, 6-6 tie vs. Lawrence (Nov. 29)

**Most Opponent PIM, Game:** 48, 6-6 tie vs. Lawrence (Nov. 29)

**Most Combined PIM:** 74, 6-6 tie vs. Lawrence (Nov. 29)

**Fewest PIM, Game:** 6 (2x), most recent 3-2 win vs. Marian (Nov. 30)

**Fewest Opponent PIM, Game:** 2, 3-2 win vs. Marian (Nov. 30)

**Fewest Combined PIM, Game:** 6, 3-2 win vs. Marian (Nov. 30)

**Most PPG, Game:** 1, (4x), most recent 5-2 win vs. Hamline (Nov. 22)

**Best PP, Game:** 1-3, 3-1 win vs. Concordia (Nov. 15)

**Most PP Opportunities, Game:** 7 (2x), (0-7), most recent 6-6 tie vs. Lawrence (Nov. 29)

**Best PK:** 6-6, 5-2 win vs. Hamline (Nov. 22)

**Most Opponent PPG, Game:** 2 (2x), (2-7), most recent 6-6 tie vs. Lawrence (Nov. 29)

**Most Opponent PP Opportunities, Game:** 7 (2x), most recent 6-6 tie vs. Lawrence (Nov. 29)

**Best Opponent PK:** 7-7 (2x), most recent 6-6 tie vs. Lawrence (Nov. 29)



## 2013-14 GUSTAVUS ADOLPHUS MEN'S HOCKEY GAME NOTES

### 2013-14 GUSTAVUS MEN'S HOCKEY ROSTER

<u>NO.</u>	<u>NAME</u>	<u>YR</u>	<u>POS</u>	<u>HGT</u>	<u>WGT</u>	<u>HOMETOWN</u>	<u>HIGH SCHOOL</u>	<u>LAST TEAM</u>
1	John McLean	So.	G	6-8	220	Eagan, Minn.	Minnehaha Academy	Wisconsin Wilderness (SIJHL)
2	Sam Smith	Jr.	D	5-11	205	Vancouver, B.C.	Flower Mound	Texas Valley Sr. Warriors (EJHL)
3	Jared Docken	Fr.	D	5-10	175	Northfield, Minn.	Northfield	Brookings Blizzard (NAHL)
4	Jack Walsh <sup>C</sup>	Jr.	F	6-3	200	Mahtomedi, Minn.	Hill-Hurray	Austin Bruins (NAHL)
5	Drew Aspinwall	Fr.	D	6-1	195	Maple Grove, Minn.	Maple Grove	Fresno Monsters (NAHL)
6	Tyler Lopic	Jr.	F	6-2	200	New Prague, Minn.	New Prague	Wisconsin (WCHA)
7	Schylar Adams	Jr.	F	5-9	185	New Prague, Minn.	New Prague	Owatonna Express (NAHL)
8	Tony Paulson	Fr.	F	5-10	165	Maple Grove, Minn.	Maple Grove	North Iowa Bulls (NA3HL)
9	Corey Leivermann <sup>C</sup>	Sr.	F	5-11	180	North Mankato, Minn.	Mankato West	Fargo Force (USHL)
10	Gavin Tufte	So.	F	6-0	220	Blaine, Minn.	Blaine	UW-Stout (WIAA)
11	Joey Olson	Sr.	D	6-3	210	Warroad, Minn.	Warroad	Warroad High School
14	Zach May	Sr.	F	5-10	170	Prior Lake, Minn.	Burnsville	Albert Lea Thunder (NAHL)
15	Adam Smyth	Sr.	F	6-2	200	Burnsville, Minn.	Burnsville	Burnsville High School
16	Darren Lopic	So.	F	6-2	210	New Prague, Minn.	New Prague	Odessa Jackalopes (NAHL)
17	Sam Akins	Fr.	F	6-2	205	Stowe, Vt.	Northwood	Dallas Ice Jets (WSHL)
18	Gustav Bengtson	Sr.	F	5-10	185	Sollentuna, Sweden	Spring Creek Academy	Texas Tornado (NAHL)
19	Sam Majka	Fr.	F	6-0	190	Wayzata, Minn.	Wayzata	Coquitlam Express (BCHL)
20	Nate Paulsen	Jr.	D	6-2	195	La Habra, Calif.	La Habra	Wisconsin Wilderness (SIJHL)
21	Alex Gallen	Sr.	D	5-10	190	Hingham, Mass.	Cushing Academy	Mercyhurst (Atlantic)
22	Andy Pearson	Jr.	F	5-10	180	Burnsville, Minn.	Burnsville	Alaska Avalanche (NAHL)
23	Blake Barnes	Fr.	D	5-11	175	Broken Arrow, Okla.	Shattuck-St. Mary's	Texas Valley Jr. Warriors (EJHL)
24	Cory Ellis	Jr.	F	6-2	215	St. Paul, Minn.	St. Paul Johnson	Austin Bruins (NAHL)
25	Ross Kovacs	Fr.	D	6-3	215	Dickinson, N.D.	Dickinson	Hawkesbury Hawks (CCHL)
26	Blake Schammel	Jr.	F	5-10	190	Red Wing, Minn.	Red Wing	Bismarck Bobcats (NAHL)
27	Joncarlo Westerlund	Fr.	F	5-11	185	Baudette, Minn.	Lake of the Woods	Dallas Ice Jets (WSHL)
28	Alec Austin	So.	D	6-3	205	Fort Lauderdale, Fla.	Keystone	UW-Superior (WIAA)
30	Patrick Sullivan	Sr.	G	6-0	195	Kelowna, B.C.	CSS	St. Scholastica (NCHA)
35	Erik Johnson	Fr.	G	6-1	180	Rice, Minn.	Suak Rapids-Rice	Rochester Ice Hawks (MNJHL)

**HEAD COACH:** Brett Petersen (14th Season)

**ASSISTANT COACH:** David Martinson

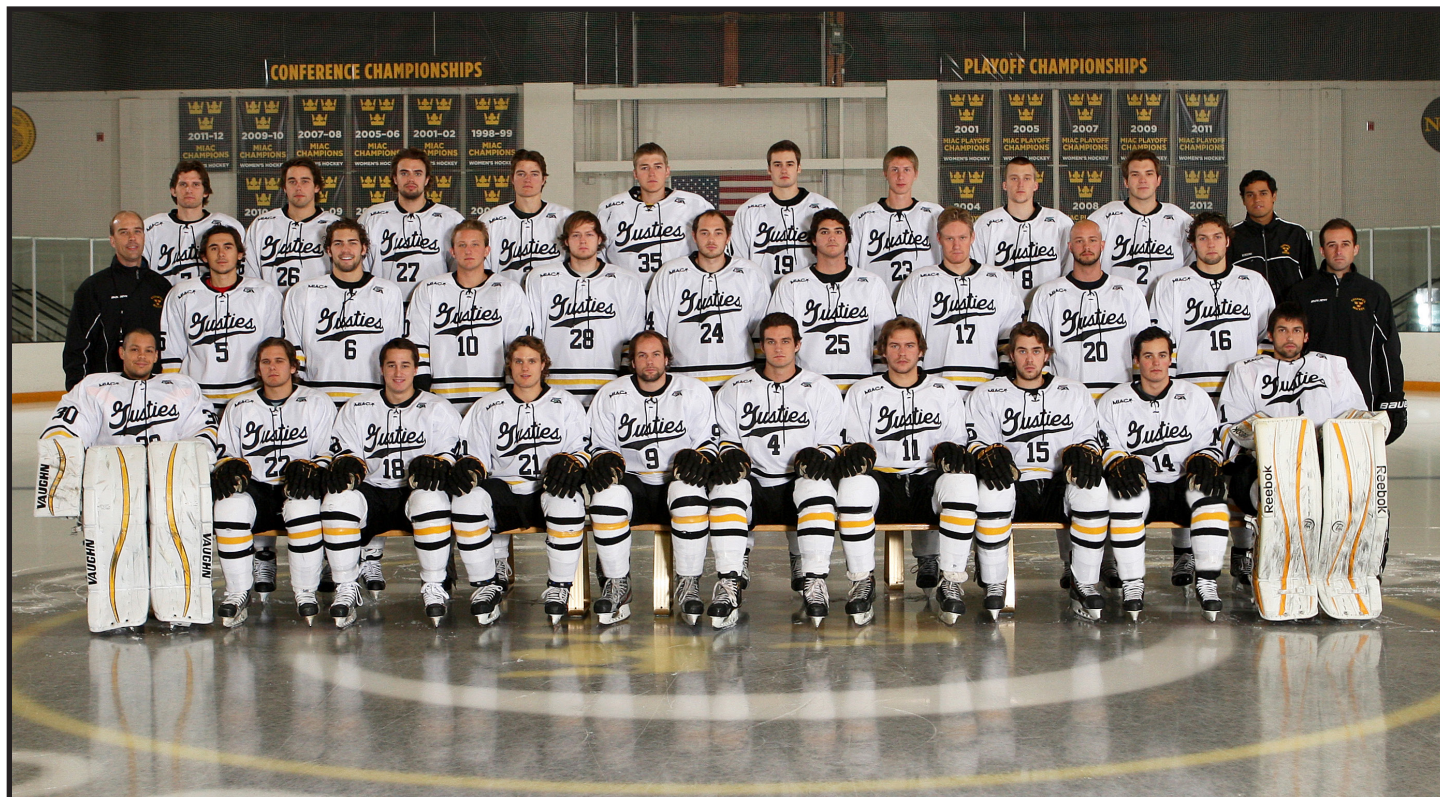
**C:** Denotes Captain





## 2013-14 GUSTAVUS ADOLPHUS MEN'S HOCKEY GAME NOTES

### 2013-14 GUSTAVUS MEN'S HOCKEY PRONUNCIATION GUIDE



**FRONT ROW (L TO R)** | Patrick Sullivan, Andy Pearson, Gustav Bengtson, Alex Gallen, Cory Leivermann, Jack Walsh, Joey Olson, Adam Smyth, Zach May, John McLean

**SECOND ROW (L TO R)** | Head Coach Brett Petersen, Drew Aspinwall, Tyler Lopic, Gavin Tufte, Alec Austin, Cory Ellis, Ross Kovacs, Sam Akins, Nate Paulsen, Darren Lopic, Assistant Coach David Martinson

**TOP ROW (L TO R)** | Schyler Adams, Blake Schammel, Joncarlo Westerlund, Jared Docken, Erik Johnson, Sam Majka, Blake Barnes, Tony Paulson, Sam Smith, Student Assistant Juan Luis Chu

### PRONUNCIATION GUIDE

- 7 Schyler Adams (SKY-ler)
- 10 Gavin Tufte (TUFF-tee)
- 17 Sam Akins (A (as in acorn)-kins)
- 18 Gustav Bengtson (GOOSE-tahv) (BENGs-ton)
- 19 Sam Majka (MAY-kuh)
- 26 Blake Schammel (SHAM-el)





## 2013-14 GUSTAVUS ADOLPHUS MEN'S HOCKEY GAME NOTES

### 2013-14 INDIVIDUAL GAME HIGHS



#### **No. 1**

John McLean

**Fewest Goals:** 1 (4x), last Nov. 23 vs. Hamline

**Most Saves:** 31, Nov. 29 vs. Lawrence

**Most Minutes:** 65, Nov. 29 vs. Lawrence

**Winning-Streak:** N/A



#### **No. 5**

Drew Aspinwall

**Goals:** 1, Nov. 30 vs. Marian

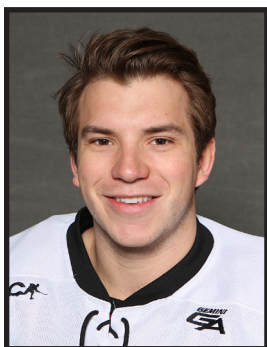
**Assists:** 1 (3x), last Nov. 23 vs. Hamline

**Points:** 1 (4x), last Nov. 30 vs. Marian

**Plus/Minus:** +3, Nov. 9 vs. UW-Stout

**PIM:** 2 (5x), last Nov. 30 vs. Marian

**Shots On Goal:** 3, Nov. 16 vs. Concordia



#### **No. 2**

Sam Smith

**Goals:** N/A

**Assists:** 1, Nov. 15 vs. Concordia

**Points:** 1, Nov. 15 vs. Concordia

**Plus/Minus:** +1 (2x), last Nov. 30 vs. Marian

**PIM:** 2, Nov. 15 vs. Concordia

**Shots On Goal:** N/A



#### **No. 6**

Tyler Lopic

**Goals:** 1 (3x), last Nov. 29 vs. Lawrence

**Assists:** 2, Nov. 8 vs. UW-Stevens Pt.

**Points:** 3, Nov. 8 vs. UW-Stevens Pt.

**Plus/Minus:** +2, Nov. 8 vs. UW-Stevens Pt.

**PIM:** 4 (3x), last Nov. 29 vs. Lawrence

**Shots On Goal:** 11, Nov. 29 vs. Lawrence



#### **No. 3**

Jared Docken

**Goals:** 1, Nov. 16 vs. Concordia

**Assists:** 1 (2x), last Nov. 29 vs. Lawrence

**Points:** 1 (3x), last Nov. 29 vs. Lawrence

**Plus/Minus:** +1 (3x), last Nov. 29 vs. Lawrence

**PIM:** 2, Nov. 29 vs. Lawrence

**Shots On Goal:** 3, Nov. 16 vs. Concordia



#### **No. 7**

Schyler Adams

**Goals:** 1, Nov. 3 vs. St. Thomas

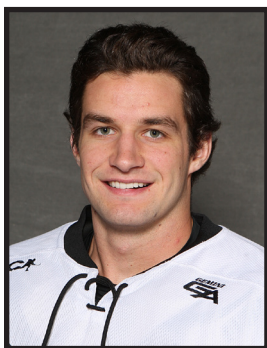
**Assists:** 1 (2x), last Nov. 16 vs. Concordia

**Points:** 1 (3x), last Nov. 16 vs. Concordia

**Plus/Minus:** +1 (3x), last Nov. 16 vs. Concordia

**PIM:** 2 (2x), last Nov. 15 vs. Concordia

**Shots On Goal:** 5, Nov. 1 vs. Bethel



#### **No. 4**

Jack Walsh

**Goals:** 1 (2x), last Nov. 29 vs. Lawrence

**Assists:** 3, Nov. 8 vs. UW-Stevens Pt.

**Points:** 3, Nov. 8 vs. UW-Stevens Pt.

**Plus/Minus:** +4, Nov. 8 vs. UW-Stevens Pt.

**PIM:** 4, Nov. 1 vs. Bethel

**Shots On Goal:** 4 (2x), last Nov. 22 vs. Hamline



#### **No. 8**

Tony Paulson

**Goals:** 1, Nov. 30 vs. Marian

**Assists:** N/A

**Points:** 1, Nov. 30 vs. Marian

**Plus/Minus:** 0 (2x), last Nov. 30 vs. Marian

**PIM:** N/A

**Shots On Goal:** 2 (2x), last Nov. 23 vs. Hamline



## 2013-14 GUSTAVUS ADOLPHUS MEN'S HOCKEY GAME NOTES

### 2013-14 INDIVIDUAL GAME HIGHS

**No. 9**

Corey Leivermann

**Goals:** 2, Nov. 8 vs. UW-Stevens Pt.

**Assists:** 2, Nov. 8 vs. UW-Stevens Pt.

**Points:** 4, Nov. 8 vs. UW-Stevens Pt.

**Plus/Minus:** +3, Nov. 22 vs. Hamline

**PIM:** 4 (2x), last Nov. 29 vs. Lawrence

**Shots On Goal:** 9, Nov. 16 vs. Concordia

**No. 15**

Adam Smyth

**Goals:** 2, Nov. 9 vs. UW-Stout

**Assists:** 2, Nov. 29 vs. Lawrence

**Points:** 2 (2x), last Nov. 29 vs. Lawrence

**Plus/Minus:** +3, Nov. 23 vs. Hamline

**PIM:** 2 (3x), last Nov. 15 vs. Concordia

**Shots On Goal:** 10, Nov. 16 vs. Concordia

**No. 10**

Gavin Tufte

**Goals:** N/A

**Assists:** 2, Nov. 3 vs. St. Thomas

**Points:** 2, Nov. 3 vs. St. Thomas

**Plus/Minus:** +1, Nov. 1 vs. Bethel

**PIM:** 4 (2x), last Nov. 29 vs. Lawrence

**Shots On Goal:** 3, Nov. 3 vs. St. Thomas

**No. 16**

Darren Lopic

**Goals:** 2, Nov. 22 vs. Hamline

**Assists:** 1 (2x), last Nov. 16 vs. Concordia

**Points:** 2, Nov. 22 vs. Hamline

**Plus/Minus:** +1 (3x), last Nov. 23 vs. Hamline

**PIM:** 4, Nov. 8 vs. UW-Stevens Pt.

**Shots On Goal:** 3 (2x), last Nov. 29 vs. Lawrence

**No. 11**

Joey Olson

**Goals:** N/A

**Assists:** 2, Nov. 22 vs. Hamline

**Points:** 2, Nov. 22 vs. Hamline

**Plus/Minus:** +2 (2x), last Nov. 30 vs. Marian

**PIM:** 2, Nov. 16 vs. Bethel

**Shots On Goal:** 2, Nov. 23 vs. Hamline

**No. 17**

Sam Akins

**Goals:** N/A

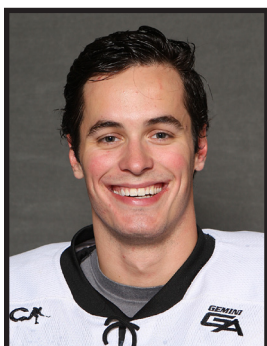
**Assists:** N/A

**Points:** N/A

**Plus/Minus:** 0 (2x), last Nov. 20 vs. Marian

**PIM:** N/A

**Shots On Goal:** N/A

**No. 14**

Zach May

**Goals:** 1, Nov. 29 vs. Lawrence

**Assists:** 2, Nov. 23 vs. Hamline

**Points:** 2 (2x), last Nov. 29 vs. Lawrence

**Plus/Minus:** +3, Nov. 9 vs. UW-Stout

**PIM:** 15, Nov. 16 vs. Concordia

**Shots On Goal:** 4, Nov. 15 vs. Concordia

**No. 18**

Gustav Bengston

**Goals:** 1 (2x), last Nov. 23 vs. Hamline

**Assists:** 1, Nov. 30 vs. Marian

**Points:** 1 (3x), Nov. 30 vs. Marian

**Plus/Minus:** +1 (2x), Nov. 30 vs. Marian

**PIM:** 2 (3x), last Nov. 30 vs. Marian

**Shots On Goal:** 3, Nov. 1 vs. Bethel





## 2013-14 GUSTAVUS ADOLPHUS MEN'S HOCKEY GAME NOTES

### 2013-14 INDIVIDUAL GAME HIGHS

**No. 19**

Sam Majka

**Goals:** N/A

**Assists:** 1 (2x), last Nov. 23 vs. Hamline

**Points:** 1 (2x), last Nov. 23 vs. Hamline

**Plus/Minus:** +1 (2x), last Nov. 23 vs. Hamline

**PIM:** 4, Nov. 22 vs. Hamline

**Shots On Goal:** 6, Nov. 22 vs. Hamline

**No. 23**

Blake Barnes

**Goals:** N/A

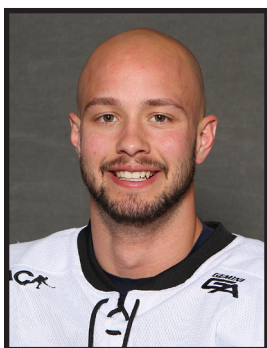
**Assists:** N/A

**Points:** N/A

**Plus/Minus:** +1, Nov. 16 vs. Concordia

**PIM:** N/A

**Shots On Goal:** 3, Nov. 29 vs. Lawrence

**No. 20**

Nate Paulsen

**Goals:** 2, Nov. 29 vs. Lawrence

**Assists:** 1, Nov. 16 vs. Concordia

**Points:** 2, Nov. 29 vs. Lawrence

**Plus/Minus:** +2, Nov. 23 vs. Hamline

**PIM:** 2 (2x), Nov. 22 vs. Hamline

**Shots On Goal:** 5, Nov. 29 vs. Lawrence

**No. 24**

Cory Ellis

**Goals:** 1 (2x), last Nov. 22 vs. Hamline

**Assists:** 1, Nov. 22 vs. Hamline

**Points:** 2, Nov. 22 vs. Hamline

**Plus/Minus:** +1 (4x), Nov. 23 vs. Hamline

**PIM:** N/A

**Shots On Goal:** 1 (2x), Nov. 16 vs. Concordia

**No. 21**

Alex Gallen

**Goals:** 1 (2x), last Nov. 23 vs. Hamline

**Assists:** 1, Nov. 8 vs. UW-Stevens Pt.

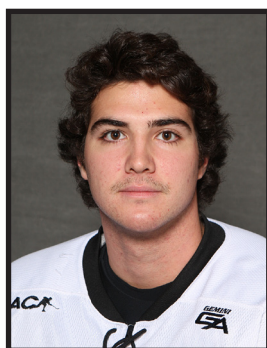
**Points:** 1 (3x), last Nov. 23 vs. Hamline

**Plus/Minus:** +3 (2x), last Nov. 29 vs.

Lawrence

**PIM:** 4, Nov. 3 vs. St. Thomas

**Shots On Goal:** 3 (2x), Nov. 23 vs. Hamline

**No. 25**

Ross Kovacs

**Goals:** N/A

**Assists:** N/A

**Points:** N/A

**Plus/Minus:** 0 (2x), last Nov. 22 vs. Hamline

**PIM:** N/A

**Shots On Goal:** N/A

**No. 22**

Andy Pearson

**Goals:** 1, Nov. 23 vs. Hamline

**Assists:** 1 (2x), last Nov. 23 vs. Hamline

**Points:** 2, Nov. 23 vs. Hamline

**Plus/Minus:** +1 (2x), last Nov. 30 vs. Marian

**PIM:** N/A

**Shots On Goal:** 4 (3x), last Nov. 29 vs.

Lawrence

**No. 26**

Blake Schammel

**Goals:** 1, Nov. 23 vs. Hamline

**Assists:** N/A

**Points:** 1, Nov. 23 vs. Hamline

**Plus/Minus:** +1, Nov. 23 vs. Hamline

**PIM:** 4, Nov. 29 vs. Lawrence

**Shots On Goal:** 3 (2x), last Nov. 29 vs.

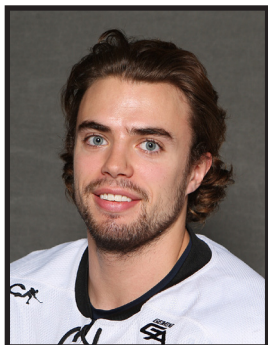
Lawrence





## 2013-14 GUSTAVUS ADOLPHUS MEN'S HOCKEY GAME NOTES

### 2013-14 INDIVIDUAL GAME HIGHS

**No. 27**

Joncarlo Westerlund

**Goals:** N/A

**Assists:** N/A

**Points:** N/A

**Plus/Minus:** 0, Nov. 23 vs. Hamline

**PIM:** N/A

**Shots On Goal:** 2, Nov. 22 vs. Hamline

**No. 35**

Erik Johnson

**Fewest Goals:** 2, Nov. 30 vs. Marian

**Most Saves:** 23, Nov. 30 vs. Marian

**Most Minutes:** 60, Nov. 30 vs. Marian

**Winning-Streak:** 1

**No. 28**

Alec Austin

**Goals:** N/A

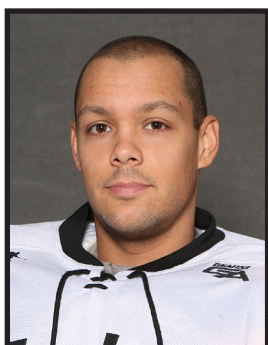
**Assists:** N/A

**Points:** N/A

**Plus/Minus:** 0, Nov. 30 vs. Marian

**PIM:** N/A

**Shots On Goal:** N/A

**No. 30**

Patrick Sullivan

**Fewest Goals:** 5, Nov. 3 vs. St. Thomas

**Most Saves:** 16, Nov. 3 vs. St. Thomas

**Most Minutes:** 48:22, Nov. 3 vs. St. Thomas

**Winning-Streak:** 0





## 2013-14 GUSTAVUS ADOLPHUS MEN'S HOCKEY GAME NOTES

### 2013-14 COMBINED STATISTICS

#### Gustavus Adolphus Hockey Gustavus Adolphus Combined Team Statistics (as of Dec 03, 2013) All games

Date	Opponent	Score	Att.
Nov 01	vs Bethel	W 2-1	552
Nov 03	vs St. Thomas	L 3-5	503
Nov 08	at UW-Stevens Point	L 4-8	915
Nov 09	at UW-Stout	W 3-1	485
* Nov 15	CONCORDIA COLLEGE	L 1-3	741
* Nov 16	CONCORDIA COLLEGE	W 3-1	471
* Nov 22	HAMLINE UNIVERSITY	W 5-2	697
* Nov 23	at Hamline University	W 5-1	140
11/29/2013	at Lawrence University	Tot 6-6	428
11/30/2013	vs Marian University	W 3-2	174

TEAM STATISTICS	GAC	OPP
<b>SHOT STATISTICS</b>		
Goals-Shot attempts	35-356	30-257
Shot pct.	.098	.117
Goals/Game	3.5	3.0
Shots/Game	35.6	25.7
<b>POWER PLAYS</b>		
Goals-Power Plays	4-43	7-41
Conversion Percent	.093	.171
Shot Attempts	53	39
Shot Percent	.075	.179
<b>GOAL BREAKDOWN</b>		
Power Play	4	7
Short-handed	3	0
Empty net	0	0
Penalty	0	0
Unassisted	3	2
Overtime	0	0
Shootout	0	0
Delayed Penalty	0	0
<b>PENALTIES</b>		
Number	61	65
Minutes	141	174
Penalties/Game	6.1	6.5
Pen minutes/Game	14.1	17.4
SHOOTOUTS (Made-Att)	0-0	0-0

Record:	Overall	Home	Away	Neutral
ALL GAMES	6-3-1	2-1-0	2-1-1	2-1-0
CONFERENCE	3-1-0	2-1-0	1-0-0	0-0-0
NON-CONFERENCE	3-2-1	0-0-0	1-1-1	2-1-0

##	Player	gp	g	a	pts	sh	sh%	pen-min	pp	sh
9	Corey Leivermann	10	7	6	13	28	.250	8-16	1	2
6	Tyler Lopic	8	3	5	8	13	.231	8-16	0	0
15	Adam Smyth	10	4	3	7	48	.083	3-6	0	0
4	Jack Walsh	10	2	5	7	21	.095	3-6	1	1
14	Zach May	9	1	5	6	9	.111	9-37	0	0
16	Darren Lopic	10	3	2	5	10	.300	2-4	1	0
20	Nate Paulsen	10	3	1	4	18	.167	2-4	0	0
5	Drew Aspinwall	10	1	3	4	13	.077	5-10	0	0
18	Gustav Bengtson	7	2	1	3	11	.182	3-6	1	0
24	Cory Ellis	6	2	1	3	2	1.000	0-0	0	0
21	Alex Gallen	10	2	1	3	10	.200	4-8	0	0
7	Schlyer Adams	6	1	2	3	10	.100	2-4	0	0
3	Jared Docken	9	1	2	3	6	.167	1-2	0	0
22	Andy Pearson	10	1	2	3	18	.056	0-0	0	0
11	Joey Olson	10	0	3	3	3	.000	1-2	0	0
19	Sam Majka	9	0	2	2	20	.000	2-4	0	0
10	Gavin Tufte	8	0	2	2	10	.000	4-8	0	0
8	Paulson, Tony	3	1	0	1	4	.250	0-0	0	0
26	Blake Schammel	9	1	0	1	11	.091	3-6	0	0
2	Smith, Sam	4	0	1	1	0	.000	1-2	0	0
17	Akins, Sam	2	0	0	0	0	.000	0-0	0	0
28	Alec Austin	1	0	0	0	0	.000	0-0	0	0
23	Blake Barnes	4	0	0	0	2	.000	0-0	0	0
25	Ross Kovacs	3	0	0	0	0	.000	0-0	0	0
27	Joncarlo Westerlund	3	0	0	0	2	.000	0-0	0	0
TM	TEAM	2	0	0	0	87	.000	0-0	0	0
	Total	10	35	47	82	356	.098	61-141	4	3
	Opponents	10	30	50	80	257	.117	65-174	7	0

##	Goalie	gp	min	ga	gaavg	saves	save%	w-l-t
35	Erik Johnson	1	60:00	2	2.00	23	.920	1-0-0
1	John McLean	9	493:25	23	2.80	188	.891	5-2-1
30	Patrick Sullivan	1	48:22	5	6.20	16	.762	0-1-0
TM	EMPTY NET	2	3:13	0	-	0	.000	0-0-0
	Total	10	605:00	30	2.98	227	.883	6-3-1
	Opponents	10	605:00	35	3.47	321	.902	3-6-1

Attendance Summary	GAC	Opponent
Total	1909	1968
Dates/Avg Per Date	3/636	4/492
Neutral Site #/Avg	3/410	

Goals by Period	1st	2nd	3rd	Total
Gustavus Adolphus	8	11	16	35
Opponents	7	12	11	30

Saves by Period	1st	2nd	3rd	Total
Gustavus Adolphus	71	90	64	227
Opponents	102	109	105	321



## 2013-14 GUSTAVUS ADOLPHUS MEN'S HOCKEY GAME NOTES

### 2013-14 TEAM STATISTICS

**Gustavus Adolphus Hockey**  
**Gustavus Adolphus Overall Team Statistics (as of Dec 03, 2013)**  
**All games**

Overall: 6-3-1 Conf: 3-1-0 Home: 2-1-0 Away: 2-1-1 Neut: 2-1-0

<b>TEAM STATISTICS</b>	<b>GAC</b>	<b>OPP</b>
<b>SHOT STATISTICS</b>		
Goals-Shot attempts	35-356	30-257
Shot pct.	.098	.117
Goals/Game	3.5	3.0
Shots/Game	35.6	25.7
Assists	47	50
<b>POWER PLAYS</b>		
Goals-Power Plays	4-43	7-41
Conversion Percent	.093	.171
Shot Attempts	53	39
Shot Percent	.075	.179
<b>GOAL BREAKDOWN</b>		
Total Goals	35	30
Power Play	4	7
Short-handed	3	0
Empty net	0	0
Penalty	0	0
Unassisted	3	2
Overtime	0	0
Shootout	0	0
Delayed Penalty	0	0
<b>PENALTIES</b>		
Number	61	65
Minutes	141	174
Penalties/Game	6.1	6.5
Pen minutes/Game	14.1	17.4
Minor	43	47
Major	1	2
10-minute Misconduct	1	2
Game Misconduct	0	0
Gross Misconduct	0	0
Match	1	0
SHOOTOUTS (Made-Att)	0-0	0-0
<b>ATTENDANCE</b>		
Total	1909	1968
Dates/Avg Per Date	3/636	4/492
Neutral Site #/Avg	3/410	

<b>Goals by Period</b>	<b>1st</b>	<b>2nd</b>	<b>3rd</b>	<b>OT</b>	<b>Total</b>
Gustavus Adolphus	8	11	16	0	35
Opponents	7	12	11	0	30

<b>Saves by Period</b>	<b>1st</b>	<b>2nd</b>	<b>3rd</b>	<b>OT</b>	<b>Total</b>
Gustavus Adolphus	71	90	64	2	227
Opponents	102	109	105	5	321





# 2013-14 GUSTAVUS ADOLPHUS MEN'S HOCKEY GAME NOTES

## 2013-14 INDIVIDUAL STATISTICS

### Gustavus Adolphus Hockey Gustavus Adolphus Overall Individual Statistics (as of Dec 03, 2013) All games

Overall: 6-3-1 Conf: 3-1-0 Home: 2-1-0 Away: 2-1-1 Neut: 2-1-0

##	Player	gp	Shots					+-	Penalties				Goals											blk
			g	a	pts	sh	sh%		pen-min	min	maj	oth	pp	sh	fg	gw	gt	ot	ht	pn	ua			
9	Corey Leivermann	10	7	6	13	28	.250	+6	8-16	6	0	0	1	2	1	0	0	0	0	0	1	0	0	
6	Tyler Lopic	8	3	5	8	13	.231	+5	8-16	6	0	0	0	0	0	1	0	0	0	0	1	2	0	
15	Adam Smyth	10	4	3	7	48	.083	0	3-6	3	0	0	0	0	0	1	0	0	0	0	0	0	0	
4	Jack Walsh	10	2	5	7	21	.095	+7	3-6	2	0	0	1	1	0	1	0	0	0	0	0	1	0	
14	Zach May	9	1	5	6	9	.111	+6	9-37	5	1	2	0	0	1	0	0	0	0	0	0	0	0	
16	Darren Lopic	10	3	2	5	10	.300	+3	2-4	2	0	0	1	0	1	1	0	0	0	0	0	1	0	
20	Nate Paulsen	10	3	1	4	18	.167	+3	2-4	2	0	0	0	0	0	0	0	0	0	0	1	1	0	
5	Drew Aspinwall	10	1	3	4	13	.077	+5	5-10	3	0	0	0	0	0	1	0	0	0	0	0	0	0	
18	Gustav Bengtson	7	2	1	3	11	.182	-1	3-6	2	0	0	1	0	2	0	0	0	0	0	0	0	0	
24	Cory Ellis	6	2	1	3	2	1.000	+4	0-0	0	0	0	0	0	0	0	0	0	0	0	0	1	0	
21	Alex Gallen	10	2	1	3	10	.200	+5	4-8	3	0	0	0	0	1	1	0	0	0	0	0	1	0	
7	Schyler Adams	6	1	2	3	10	.100	+3	2-4	2	0	0	0	0	0	0	0	0	0	0	0	0	0	
3	Jared Docken	9	1	2	3	6	.167	+1	1-2	0	0	0	0	0	1	0	0	0	0	0	0	1	0	
22	Andy Pearson	10	1	2	3	18	.056	-3	0-0	0	0	0	0	0	0	0	0	0	0	0	0	0	0	
11	Joey Olson	10	0	3	3	3	.000	+3	1-2	1	0	0	0	0	0	0	0	0	0	0	0	6	0	
19	Sam Majka	9	0	2	2	20	.000	-1	2-4	2	0	0	0	0	0	0	0	0	0	0	0	0	0	
10	Gavin Tufte	8	0	2	2	10	.000	0	4-8	2	0	0	0	0	0	0	0	0	0	0	0	1	0	
8	Paulson,Tony	3	1	0	1	4	.250	-1	0-0	0	0	0	0	0	0	0	0	0	0	0	0	0	0	
26	Blake Schammel	9	1	0	1	11	.091	-3	3-6	1	0	0	0	0	0	0	0	0	0	0	0	0	0	
2	Smith,Sam	4	0	1	1	0	.000	+1	1-2	1	0	0	0	0	0	0	0	0	0	0	0	1	0	
17	Akins,Sam	2	0	0	0	0	.000	0	0-0	0	0	0	0	0	0	0	0	0	0	0	0	0	0	
28	Alec Austin	1	0	0	0	0	.000	0	0-0	0	0	0	0	0	0	0	0	0	0	0	0	0	0	
23	Blake Barnes	4	0	0	0	2	.000	0	0-0	0	0	0	0	0	0	0	0	0	0	0	0	0	0	
25	Ross Kovacs	3	0	0	0	0	.000	-2	0-0	0	0	0	0	0	0	0	0	0	0	0	0	2	0	
27	Joncarlo Westerlund	3	0	0	0	2	.000	-2	0-0	0	0	0	0	0	0	0	0	0	0	0	0	0	0	
TM	TEAM	2	0	0	0	87	.000	0	0-0	0	0	0	0	0	0	0	0	0	0	0	0	29	0	
Total			10	35	47	82	356	.098	+39	61-141	43	1	2	4	3	7	6	0	0	0	0	3	47	0
Opponents			10	30	50	80	257	.117	-	65-174	47	2	2	7	0	3	3	1	0	0	0	2	74	0

##	Goalie	gp-gs	Goal average			Saves		Record				Goals allowed				
			minutes	ga	avg	saves	pct	w	l	t	sho	pp	sh	en	pen	sog
35	Erik Johnson	1-1	60:00	2	2.00	23	.920	1	0	0	0	0	0	0	0	0
1	John McLean	9-8	493:25	23	2.80	188	.891	5	2	1	0	5	0	0	0	0
30	Patrick Sullivan	1-1	48:22	5	6.20	16	.762	0	1	0	0	2	0	0	0	0
TM	EMPTY NET	2-0	3:13	0	-	0	.000	0	0	0	0	0	0	0	0	0
Total		10-0	605:00	30	2.98	227	.883	6	3	1	0	7	0	0	0	0
Opponents		10-0	605:00	35	3.47	321	.902	3	6	1	0	4	3	0	0	0



## 2013-14 GUSTAVUS ADOLPHUS MEN'S HOCKEY GAME NOTES

### 2013-14 CATEGORY LEADERS

#### Gustavus Adolphus Hockey Gustavus Adolphus Category Leaders (as of Dec 03, 2013) All games

##	Points	GP	G	A	Pts	Sh
9	Corey Leivermann	10	7	6	13	28
6	Tyler Lopic	8	3	5	8	13
15	Adam Smyth	10	4	3	7	48
4	Jack Walsh	10	2	5	7	21
14	Zach May	9	1	5	6	9
16	Darren Lopic	10	3	2	5	10
20	Nate Paulsen	10	3	1	4	18
5	Drew Aspinwall	10	1	3	4	13
18	Gustav Bengtson	7	2	1	3	11
24	Cory Ellis	6	2	1	3	2

##	Goals	GP	G	A	Pts	Sh
9	Corey Leivermann	10	7	6	13	28
15	Adam Smyth	10	4	3	7	48
6	Tyler Lopic	8	3	5	8	13
16	Darren Lopic	10	3	2	5	10
20	Nate Paulsen	10	3	1	4	18
4	Jack Walsh	10	2	5	7	21
18	Gustav Bengtson	7	2	1	3	11
24	Cory Ellis	6	2	1	3	2
21	Alex Gallen	10	2	1	3	10
14	Zach May	9	1	5	6	9

##	Power-Play Goals	GP	PPG
18	Gustav Bengtson	7	1
4	Jack Walsh	10	1
9	Corey Leivermann	10	1
16	Darren Lopic	10	1

##	Short-Handed Goals	GP	SHG
9	Corey Leivermann	10	2
4	Jack Walsh	10	1

##	Game-Winning Goals	GP	GWG
4	Jack Walsh	10	1
16	Darren Lopic	10	1
21	Alex Gallen	10	1
15	Adam Smyth	10	1
6	Tyler Lopic	8	1
5	Drew Aspinwall	10	1

##	Plus/Minus	GP	+/-
4	Jack Walsh	10	+7
9	Corey Leivermann	10	+6
14	Zach May	9	+6
5	Drew Aspinwall	10	+5
21	Alex Gallen	10	+5
6	Tyler Lopic	8	+5
24	Cory Ellis	6	+4
11	Joey Olson	10	+3
20	Nate Paulsen	10	+3
16	Darren Lopic	10	+3

##	Assists	GP	G	A	Pts	Sh
9	Corey Leivermann	10	7	6	13	28
6	Tyler Lopic	8	3	5	8	13
4	Jack Walsh	10	2	5	7	21
14	Zach May	9	1	5	6	9
15	Adam Smyth	10	4	3	7	48
5	Drew Aspinwall	10	1	3	4	13
11	Joey Olson	10	0	3	3	3
16	Darren Lopic	10	3	2	5	10
7	Schlyer Adams	6	1	2	3	10
3	Jared Docken	9	1	2	3	6

##	Shots	GP	G	A	Pts	Sh	Sh%
15	Adam Smyth	10	4	3	7	48	.083
9	Corey Leivermann	10	7	6	13	28	.250
4	Jack Walsh	10	2	5	7	21	.095
19	Sam Majka	9	0	2	2	20	.000
20	Nate Paulsen	10	3	1	4	18	.167
22	Andy Pearson	10	1	2	3	18	.056
6	Tyler Lopic	8	3	5	8	13	.231
5	Drew Aspinwall	10	1	3	4	13	.077
18	Gustav Bengtson	7	2	1	3	11	.182
26	Blake Schammel	9	1	0	1	11	.091

##	Shot Pct.	GP	G	A	Pts	Sh	Sh%
24	Cory Ellis	6	2	1	3	2	1.000
16	Darren Lopic	10	3	2	5	10	.300
9	Corey Leivermann	10	7	6	13	28	.250
8	Paulson, Tony	3	1	0	1	4	.250
6	Tyler Lopic	8	3	5	8	13	.231
21	Alex Gallen	10	2	1	3	10	.200
18	Gustav Bengtson	7	2	1	3	11	.182
20	Nate Paulsen	10	3	1	4	18	.167
3	Jared Docken	9	1	2	3	6	.167
14	Zach May	9	1	5	6	9	.111

##	Penalties	GP	Pen	Min
14	Zach May	9	9	37
6	Tyler Lopic	8	8	16
9	Corey Leivermann	10	8	16
5	Drew Aspinwall	10	5	10
21	Alex Gallen	10	4	8
10	Gavin Tufte	8	4	8
18	Gustav Bengtson	7	3	6
4	Jack Walsh	10	3	6
26	Blake Schammel	9	3	6
15	Adam Smyth	10	3	6

##	Penalty Minutes	GP	Pen	Min
14	Zach May	9	9	37
6	Tyler Lopic	8	8	16
9	Corey Leivermann	10	8	16
5	Drew Aspinwall	10	5	10
21	Alex Gallen	10	4	8
10	Gavin Tufte	8	4	8
15	Adam Smyth	10	3	6
26	Blake Schammel	9	3	6
18	Gustav Bengtson	7	3	6
4	Jack Walsh	10	3	6



# 2013-14 GUSTAVUS ADOLPHUS MEN'S HOCKEY GAME NOTES

## 2013-14 GOALS-ASSISTS-POINTS

### Gustavus Adolphus Hockey Gustavus Adolphus Game-by-Game Goals-Assists-Points (as of Dec 03, 2013) All games

Opponent	Date	Score	1 MCLEAN,JOH	2 SMITH,SAM	3 DOCKEN,JAR	4 WALSH,JACK	5 ASPINWALL,	6 LAPIC,TYLER	7 ADAMS,SCHY	8 PAULSON,TO	9 LEIVERMANN	10 TUFTE,GAVIN	11 OLSON,JOEY
vs BU	Nov 01	2-1 W	0-0-0	DNP	0-0-0	0-0-0	0-1-1	1-0-1	0-0-0	DNP	0-1-1	0-0-0	0-0-0
vs UST	Nov 03	3-5 L	0-0-0	DNP	0-1-1	0-0-0	0-0-0	0-1-1	1-0-1	DNP	1-0-1	0-2-2	0-0-0
at UWSP	Nov 08	4-8 L	0-0-0	DNP	0-0-0	0-3-3	0-0-0	1-2-3	0-0-0	DNP	2-2-4	0-0-0	0-0-0
at STOUT	Nov 09	3-1 W	0-0-0	0-0-0	0-0-0	0-0-0	0-1-1	0-0-0	0-1-1	DNP	0-0-0	0-0-0	0-0-0
CNCM	Nov 15	1-3 L	0-0-0	0-1-1	0-0-0	0-0-0	0-0-0	0-0-0	0-0-0	DNP	1-0-1	0-0-0	0-0-0
CNCM	Nov 16	3-1 W	0-0-0	DNP	1-0-1	1-0-1	0-0-0	0-0-0	0-1-1	DNP	0-1-1	0-0-0	0-0-0
HUMH	Nov 22	5-2 W	0-0-0	DNP	0-0-0	0-1-1	0-0-0	DNP	DNP	0-0-0	1-1-2	0-0-0	0-2-2
at HUM	Nov 23	5-1 W	0-0-0	0-0-0	0-0-0	0-0-0	0-1-1	DNP	DNP	0-0-0	0-1-1	DNP	0-1-1
at LU	11/29/20	6-6 t	0-0-0	DNP	0-1-1	1-0-1	0-0-0	1-1-2	DNP	DNP	1-0-1	0-0-0	0-0-0
vs MU	11/30/20	3-2 W	DNP	0-0-0	DNP	0-1-1	1-0-1	0-1-1	DNP	1-0-1	1-0-1	DNP	0-0-0

Opponent	Date	Score	14 MAY,ZACH	15 SMYTH,ADAM	16 LAPIC,DARRE	17 AKINS,SAM	18 BENGTON,G	19 MAJKA,SAM	20 PAULSEN,NA	21 GALLEN,ALE	22 PEARSON,AN	23 BARNES,BLA	24 ELLIS,CORY
vs BU	Nov 01	2-1 W	0-0-0	0-0-0	0-1-1	DNP	1-0-1	0-0-0	0-0-0	0-0-0	0-0-0	DNP	DNP
vs UST	Nov 03	3-5 L	0-1-1	0-0-0	1-0-1	DNP	0-0-0	0-0-0	0-0-0	0-0-0	0-0-0	0-0-0	DNP
at UWSP	Nov 08	4-8 L	0-0-0	0-0-0	0-0-0	DNP	0-0-0	0-0-0	1-0-1	0-1-1	0-0-0	DNP	DNP
at STOUT	Nov 09	3-1 W	0-1-1	2-0-2	0-0-0	DNP	DNP	0-0-0	0-0-0	1-0-1	0-1-1	DNP	0-0-0
CNCM	Nov 15	1-3 L	0-0-0	0-0-0	0-0-0	DNP	0-0-0	0-0-0	0-0-0	0-0-0	0-0-0	DNP	DNP
CNCM	Nov 16	3-1 W	0-0-0	0-0-0	0-1-1	DNP	DNP	0-0-0	0-1-1	0-0-0	0-0-0	0-0-0	1-0-1
HUMH	Nov 22	5-2 W	DNP	1-0-1	2-0-2	0-0-0	DNP	0-1-1	0-0-0	0-0-0	0-0-0	DNP	1-1-2
at HUM	Nov 23	5-1 W	0-2-2	1-0-1	0-0-0	DNP	1-0-1	0-1-1	0-0-0	1-0-1	1-1-2	0-0-0	0-0-0
at LU	11/29/20	6-6 t	1-1-2	0-2-2	0-0-0	DNP	0-0-0	0-0-0	2-0-2	0-0-0	0-0-0	0-0-0	0-0-0
vs MU	11/30/20	3-2 W	0-0-0	0-1-1	0-0-0	0-0-0	0-1-1	DNP	0-0-0	0-0-0	0-0-0	DNP	0-0-0

Opponent	Date	Score	25 KOVACS,ROS	26 SCHAMMEL,B	27 WESTERLUN	28 AUSTIN,ALEC	30 SULLIVAN,PA	35 JOHNSON,ER
vs BU	Nov 01	2-1 W	0-0-0	0-0-0	DNP	DNP	DNP	DNP
vs UST	Nov 03	3-5 L	DNP	0-0-0	DNP	DNP	0-0-0	DNP
at UWSP	Nov 08	4-8 L	0-0-0	0-0-0	DNP	DNP	DNP	DNP
at STOUT	Nov 09	3-1 W	DNP	0-0-0	DNP	DNP	DNP	DNP
CNCM	Nov 15	1-3 L	DNP	0-0-0	DNP	DNP	DNP	DNP
CNCM	Nov 16	3-1 W	DNP	0-0-0	DNP	DNP	DNP	DNP
HUMH	Nov 22	5-2 W	0-0-0	0-0-0	0-0-0	DNP	DNP	DNP
at HUM	Nov 23	5-1 W	DNP	1-0-1	0-0-0	DNP	DNP	DNP
at LU	11/29/20	6-6 t	DNP	0-0-0	DNP	DNP	DNP	DNP
vs MU	11/30/20	3-2 W	DNP	DNP	0-0-0	0-0-0	DNP	0-0-0