

2013-14 GUSTAVUS WOMEN'S HOCKEY NOTES

Game 8/9 St. Olaf

Gustavus Sports Information

800 W College Ave, St. Peter, MN 56082
gustavus.edu/athletics
(507) 933-7647 • sportsinfo@gustavus.edu

Women's Hockey Contact
Tyler Grey, Graduate Assistant
(507) 933-8411 • tgrey@gustavus.edu

Follow Gustavus Athletics Online



Twitter
@GustieAthletics



Flickr
flickr.com/photos/gogusties



Facebook
facebook.com/GustieAthletics



YouTube
youtube.com/gustavusathletics



Game Central
client.stretchinternet.com/client/gac.portal



Instagram
instagram.com/gustieathletics

2013-14 Schedule/Results

Date	Opponent	Time/Result
11/2	SAINT MARY'S UNIVERSITY	W 8-2 (1-0-0)
11/8	UW-SUPERIOR	L 1-2 (1-1-0)
11/9	UW-SUPERIOR	T 2-2 (1-1-1)
11/15	Concordia College*	W 4-1 (2-1-1)
11/16	Concordia College*	W 2-0 (3-1-1)
11/22	Hamline University*	W 6-0 (4-1-1)
11/23	HAMLIN UNIVERSITY*	W 4-1 (5-1-1)
12/6	ST. OLAF COLLEGE*	7:00 p.m.
12/7	St. Olaf College*	7:30 p.m.
12/11	UW-River Falls	7:00 p.m.
12/13	UW-RIVER FALLS	7:00 p.m.
1/10	UW-Stevens Point	7:00 p.m.
1/11	UW-Stevens Point	2:30 p.m.
1/17	Augsburg College*	7:00 p.m.
1/18	AUGSBURG COLLEGE*	2:00 p.m.
1/24	Saint Mary's University*	7:00 p.m.
1/25	SAINT MARY'S UNIVERSITY*	7:00 p.m.
1/31	COLLEGE OF SAINT BENEDICT*	5:00 p.m.
2/1	College of Saint Benedict*	2:00 p.m.
2/7	ST. CATHERINE UNIVERSITY*	7:00 p.m.
2/8	St. Catherine University*	2:00 p.m.
2/14	UNIVERSITY OF ST. THOMAS*	7:00 p.m.
2/15	University of St. Thomas*	2:00 p.m.
2/21	Bethel University*	7:00 p.m.
2/22	BETHEL UNIVERSITY*^	2:00 p.m.

Home Games in BOLD CAPS

* - Indicates MIAC Contest

^ - Senior Night



No. 5 Gustavus Adolphus

Golden Gusties
(5-1-1 Overall, 4-0-0 MIAC)

vs.

St. Olaf College

Oles
(2-6-0 Overall, 2-2-0 MIAC)



Game 8

Date: Friday, December 6 • **Time:** 7:00 p.m. • **Location:** St. Peter, Minn.

Arena: Don Roberts Ice Rink

Live Video: <http://client.stretchinternet.com/client/gac.portal>

Live Stats: <https://gustavus.edu/athletics/whky/LIVE/xlive.htm>

Live Audio: <http://client.stretchinternet.com/client/gac.portal>

Game 9

Date: Saturday, December 7 • **Time:** 7:30 p.m. • **Location:** Northfield, Minn.

Arena: Northfield Ice Arena

Live Video: None Available

Live Stats: None Available

Live Audio: None Available

Setting The Scene... After being idle last weekend, the Gustavus Adolphus women's hockey team is set to get back into action with a weekend series against Minnesota Intercollegiate Athletic Conference (MIAC) rival St. Olaf College. The series will begin in St. Peter on Friday, Dec. 6th with a 7:00 p.m., opening face off and conclude on Saturday, Dec. 7th in Northfield, Minn., with a 7:30 p.m., start. The Gusties enter the weekend with a record of 5-1-1 overall and a mark of 4-0-0 in the MIAC. In its most recent series, Gustavus swept Hamline by the scores of 6-0 on Friday, Nov. 22nd, and 4-1 on Saturday, Nov. 23rd. The Oles come in with a record of 2-6-0 overall and a tally of 2-2-0 in MIAC play after falling to UW-River Falls 7-2 in River Falls, Wis., on Tuesday, Nov. 26th.

Series Snapshot... This weekend marks the 33rd and 34th meetings between Gustavus and St. Olaf in women's hockey. The Gusties have owned the series thus far with a record of 29-1-2. When these two teams met a year ago, Gustavus swept the regular season series with wins by the scores of 7-4 and 6-2. The only loss in the all-time series for the Gustie women came in the 2011-12 season when they fell by the final score of 5-2 in Northfield, Minn., on Saturday, Feb. 18th.

Weekend Rewind... Gustavus last took the ice two weeks ago when it captured a sweep over MIAC foe Hamline University. The Gusties defeated the Pipers 6-0 in St. Paul on Friday, Nov. 22nd, before finishing the series with a 4-1 win the following afternoon. Allison Eder-Zdechlik, Melissa Doyle, and Emily Gustafson all led the way for the Gusties in the series sweep with three points each. Eder-Zdechlik scored two goals on Friday and added an assist on Saturday for her three points, while Doyle had two assists on Friday and a goal on Saturday. Gustafson registered her first collegiate points in a three-assist outing on Friday night. Between the pipes, Tara Hoverstad held the Pipers scoreless on Friday night in 53:21 of play before Marah Sobczak got her first win of the season on Saturday afternoon, going all 60 minutes and making 12 saves in the 4-1 win.

Gustavus Embarks On 17th Season Of Women's Hockey... The Gustavus women's hockey team is currently in its 17th season. Founded in 1997, the Gusties have attained an

The Match Up

Statistical Comparison

Gustavus		St. Olaf
3.9 (1st)	Goals For	2.0 (7th)
1.1 (1st)	Goals Against	3.6 (8th)
25.0 (1st)	Power Play	10.8 (9th)
91.3 (1st)	Penalty Kill	84.8 (2nd)
52.7 (2nd)	Combined Special Teams	45.7 (7th)
7.1 (10th)	Penalty Minutes	9.5 (6th)

- 2013-14 season averages with MIAC ranks

The Series

Gustavus vs. St. Olaf

All-Time Record	29-1-2
Last Meeting	W 6-2 (2/16/13)
Current Streak	W2

Head Coach Mike Carroll

Overall Record at Gustavus	319-71-24
vs. St. Olaf	25-2-2

Head Coach John Bazzachini

Overall Record at St. Olaf	93-108-16
vs. Gustavus	2-16-0

Last 5 Seasons	10-2-0
----------------	--------

Date	Location	Result
2/16/13	St. Peter	W 6-2
2/15/13	Northfield	W 7-4
2/18/12	Northfield	L 2-5
2/17/12	St. Peter	W 5-0
11/13/10	Northfield	W 6-0
11/12/10	St. Peter	W 2-1
3/4/10*	St. Peter	W 5-0
12/12/09	Northfield	W 3-1
12/11/09	St. Peter	L 2-3
2/28/09*	St. Peter	W 5-0
11/22/08	Northfield	W 4-2
11/21/08	St. Peter	W 6-0

* - Denotes MIAC Semifinal

** - Denotes MIAC Championship

all-time record of 354-90-25, which stands as the second winningest program in all of NCAA Division III women's hockey. The Gustie women have won 12 Minnesota Intercollegiate Athletic Conference (MIAC) titles in the 14 years of women's hockey in the conference. Those 12 titles rank first in front of St. Thomas, Augsburg, and Saint Mary's, who all have two championships apiece. Gustavus has also earned the MIAC Playoff crown a total of 11 times, 10 of which have come in the last 10 years, that have led to 11 NCAA Tournament appearances.

Wearing The "C"... In the 16-year history of the Gustavus women's hockey program, 30 players have earned the honor of being a captain. This year, three more young women are added to that list. All first-year captains, senior Melissa Doyle and juniors Courtney Boucher and Carolyn Draayer will accept the role during the 2013-14 campaign.

Home Grown... Of the 25 players on this year's roster, 23 are natives of Minnesota. The only players to reside outside of the Gopher State are Courtney Bethune, who hails from Fort Frances, Ontario, and Allie Lewis, who is a native of Kearney, Nebraska.

Fountain Of Youth... After losing 11 letterwinners from last year's squad, Gustavus will look to its youth to provide much-needed production this season. The Gusties return just 12 letterwinners from a year ago compared to a class of 11 first-year players and a transfer in junior forward Krystal Baumann, who transferred from Minnesota State University, Mankato. Gustavus also welcomes back senior goaltender Marah Sobczak after she was away from the team recovering from a serious car accident last year.

Gusties In The Polls... Gustavus is ranked fifth in the latest USCHO.com Division III Women's Hockey Poll, which was released Monday. This week marks the 67th consecutive time that the Gusties have been ranked in the USCHO.com poll. The last time Gustavus fell outside of the top ten was the week of Jan. 11th, 2010. It is the second straight week that the Gusties claim the fifth position in the poll. The top eight ranked teams all remained consistent with last week's top ten, while Amherst makes its first appearance in the poll at No. 9 and Manhattanville falls one spot to No. 10, dropping UW-River Falls outside the poll.

About The Oles... Following four straight losses, St. Olaf will look to get back on track this weekend against the Gusties. Averaging 2.0 goals per game (7th/MIAC), the Oles are led offensively by a pair of senior forwards. Katie Moeller and Lisa Tuuri have tallied five points each this season. Moeller's five points have come from four goals (t-7th/MIAC) and one assist, while Tuuri has three goals (t-10th/MIAC) and two assists. In net, first-year Cassie Alexander has seen the most action, logging 205:26 on the ice. Alexander has played in four games with a record of 1-2-0 and has allowed 12 goals next to 107 saves for a goals against average of 3.50.

On A Roll... Gustavus forward Allison Eder-Zdechlik has sprinted out of the gate to begin her sophomore campaign. In seven games, Eder-Zdechlik has already scored seven goals to lead the league in goal scoring and has added three assists for a total of 10 points on the year, which ranks second in the MIAC. Her performance throughout the first month of the season earned her Gustavus Athlete-of-the-Month honors for the month of November.

Her linemate, Amanda Cartony, has also been on a roll to open her senior season. After making the switch from the soccer pitch to the ice rink in the second week of the regular season, Cartony has notched a point in each of her first six games with the team. The Stillwater, Minn., native has now recorded nine points, stemming from two goals and seven assists. Her seven assists lead the MIAC, while her nine points are tied for third.

More Than A Rivalry... The annual Gustavus-St. Olaf series has been more than a rivalry for Ole senior forward Lisa Tuuri. It has been a homecoming of sorts. Tuuri started her career in St. Peter playing for Gustavus before transferring to St. Olaf, where she has played each of the past three seasons, including this year. This season marks the final time she will play against her old team.

Good To Be Back... On Saturday, Nov. 23rd, senior goaltender Marah Sobczak played all 60 minutes of a college hockey game or the first time since the 2011-12 season. After being seriously injured in a car accident the summer prior to her junior year, Sobczak spent the 2012-13 season away from the team recovering. Marah returned to school in the spring of 2013 and rejoined the team this season, seeing action in two of the first three games. Saturday's game against Hamline marked her third appearance of the year, only this time she went the distance in a 4-1 win.



The Facts

Gustavus Quick Facts

Location:	St. Peter, Minnesota
Address:	800 West College Ave. St. Peter, MN 56082
Founded:	1862
Enrollment:	2,572
Nickname:	Golden Gusties
School Colors:	Black and Gold
Home Court:	Gus Young Court
NCAA Affiliation:	NCAA Division III
Conference:	Minnesota Intercollegiate Athletic
President:	Jack R. Ohle
Athletic Director:	Tom Brown
Assistant Athletic Director:	Jared Phillips
Athletic Trainer:	Troy Banse
Equipment Manager:	Wayne Norman
Sports Information Director:	Ethan Armstrong

Gustavus Hockey Quick Facts

2012-13 Record:	27-2-1
2012-13 MIAC Record/Finish:	18-0-0/1st
All-Time Record:	354-90-25
All-Time MIAC Record:	232-23-12
MIAC Championships :	12
Letterwinners Returning/Lost:	12/11
All-MIAC Honorees Returning/Lost:	1/3

Gustavus Under Head Coach Mike Carroll

Year	Overall	MIAC	Conference Finish
1999-00	18-10-1	12-5-1	3rd
2000-01	23-6-1	16-2-0	1st
2001-02	23-5-2	18-0-1	1st
2002-03	14-9-4	11-4-3	3rd
2003-04	22-6-0	16-2-0	2nd
2004-05	25-4-1	17-1-0	1st
2005-06	22-5-2	17-0-1	1st
2006-07	25-3-0	17-1-0	1st
2007-08	25-3-0	18-0-0	1st
2008-09	22-2-4	16-0-2	1st
2009-10	26-6-2	14-3-1	1st
2010-11	22-5-3	14-2-2	1st
2011-12	24-4-2	16-1-1	1st
2012-13	27-2-1	18-0-0	1st
2013-14	5-1-1	4-0-0	-
Totals	319-71-25	224-21-12	11 MIAC Titles

Around The League

MIAC Standings

School	Points	MIAC	Overall
St. Thomas	8	4-0-0	4-1-0
Gustavus	8	4-0-0	5-1-1
Bethel	6	3-1-0	4-2-0
St. Catherine	5	2-1-1	3-3-1
Saint Mary's	4	2-2-0	2-4-0
St. Olaf	4	2-2-0	2-6-0
Augsburg	2	1-3-0	2-4-0
Concordia	2	1-3-0	1-5-1
Hamline	1	0-3-1	2-5-1
Saint Benedict	0	0-4-0	2-5-0

This Week In The MIAC

Friday, Dec. 6th

Saint Mary's @ St. Catherine | 7:00 p.m.
Hamline @ Bethel | 7:00 p.m.
St. Olaf @ Gustavus | 7:00 p.m.
Concordia @ St. Thomas | 7:30 p.m.
Augsburg @ Saint Benedict | 7:30 p.m.

Saturday, Dec. 7th

St. Catherine @ Saint Mary's | 2:00 p.m.
Bethel @ Hamline | 2:00 p.m.
Concordia @ St. Thomas | 2:30 p.m.
Saint Benedict @ Augsburg | 7:00 p.m.
Gustavus @ St. Olaf | 7:30 p.m.

MIAC Athlete-of-the-Week



Jordan Verleye, Hamline
Jr., Forward, Livonia, Mich.

Opponent	Goals	Assists	Points
Marian	2	0	2
Marian	1	1	2
Total	3	1	4

USCHO.com Div. III Poll

Rank	School	Overall	Points	Last
1	Plattsburgh	9-0-1	150	1
2	Middlebury	5-1-0	133	2
3	Norwich	7-1-0	120	3
4	Elmira	6-2-1	99	4
5	Gustavus Adolphus	5-1-1	87	5
6	UW-Superior	5-1-2	75	6
7	UW-Stevens Point	6-1-1	60	7
8	St. Scholastica	7-0-2	40	8
9	Amherst	3-1-2	23	NR
10	Manhattanville	4-2-1	22	9



Gustavus Record When...

At home	2-1-1
On the road	3-0-0
Neutral Site	0-0-0
vs. MIAC opponents	4-0-0
vs. Non-conference opponents	1-1-1
vs. Top 10 opponents	0-1-1
GAC scores 4 or more goals	4-0-0
GAC scores 3 goals	0-0-0
GAC scores 2 or fewer goals	1-1-1
GAC scores first	4-0-0
Opponent scores first	1-1-1
GAC leads after 1st period	2-0-1
Opponent leads after 1st period	0-1-0
Tied after 1st period	3-0-0
GAC leads after 2nd period	3-0-0
Opponent leads after 2nd period	0-1-0
Tied after 2nd period	2-0-1
In overtime	0-0-1
Games decided by one goal	0-1-0
Games decided by two goals	1-0-0
Games decided by three goals	2-0-0
Games decided by four or more	2-0-0
GAC scores on the power play	4-0-1
GAC scoreless on the power play	1-1-0
GAC scores two or more PP goals	2-0-0
GAC outshoots opponent	5-1-1
GAC outshot by opponent	0-0-0
Shots equal	0-0-0
Wednesday	0-0-0
Friday	2-1-0
Saturday	3-0-1
In November	4-1-1
In December	0-0-0
In January	0-0-0
In February	0-0-0
In March	0-0-0
Following a win	3-1-0
Following a loss	0-0-1
Following a tie	1-0-0
Night games	2-1-0
Day games	3-0-1

Who's Hot

Player	Games	vs. Hamline		Points	Point Streak
		Goals	Assists		
Allison Eder-Zdechlik	2	2	1	3	2
Melissa Doyle	2	1	2	3	2
Emily Gustafson	2	0	3	3	-
Emily Reibert	2	2	0	2	-
Maddie Bergh	2	1	1	2	2
Allie Lewis	2	1	1	2	-
Courtney Boucher	2	0	2	2	2
Amanda Cartony	2	0	2	2	6
Carolyn Draayer	2	0	2	2	2
Krystal Baumann	2	1	0	1	1
Halie Gudmonson	2	1	0	1	1
Leah Johnson	2	1	0	1	1
Marissa Brandt	2	0	1	1	1
Keri Pickel	2	0	1	1	1

Goaltending	Record	vs. Hamline		Saves	Scoreless Streak
		Minutes	Goals Ag.		
Lindsey Hibbard	0-0-0	0:00	0	0	109:15
Tara Hoverstad	1-0-0	53:21	0	9	110:29
Marah Sobczak	1-0-0	66:39	1	14	18:49

Career Scoring vs. St. Olaf

Player	Games	Goals	Assists	Points
Melissa Doyle	6	4	1	5
Carolyn Draayer	4	3	1	4
Allison Eder-Zdechlik	2	3	1	4
Courtney Boucher	4	1	2	3
Marissa Brandt	4	1	1	2
Maddie Bergh	5	0	2	2
Amanda Cartony	6	0	2	2
Leah Johnson	3	0	1	1
Keri Pickel	2	0	0	0
Emily Reibert	2	0	0	0

Career Goaltending vs. St. Olaf

Player	Record	Minutes	Goals Against	Saves
Marah Sobczak	0-1-0	74:44	4	25
Lindsey Hibbard	1-0-0	60:00	4	30
Tara Hoverstad	-	-	-	-

Season By The Numbers

Largest Victory	6 (2x), vs. Hamline (11/22/13)
Largest Defeat	1, vs. UW-Superior (11/8/13)
Largest First Period Lead	2 (3-1), vs. Saint Mary's (11/2/13)
Largest First Period Deficit	2 (2-0), vs. UW-Superior (11/8/13)
Largest Second Period Lead	4 (2x), Last: (4-0) vs. Hamline (11/22/13)
Largest Second Period Deficit	1 (2-1), vs. UW-Superior (11/8/13)
Most Goals Scored	8, vs. Saint Mary's (11/2/13)
Fewest Goals Scored	2 (3x), last: vs. Concordia (11/16/13)
Most Goals Allowed	2 (3x), last: vs. UW-Superior (11/9/13)
Fewest Goals Allowed	0 (2x), Last: (6-0) vs. Hamline (11/22/13)
Largest Lead	6 (2x), Last: (6-0) Last vs. Hamline (11/22/13)
Leargest Lead On Road	6 (6-0), vs. Hamline (11/22/13)
Largest Lead At Home	6 (8-2), vs. Saint Mary's (11/2/13)
Largest Blown Lead - Loss/Tie	-
Largest Deficit	2 (2-0), vs. UW-Superior (11/8/13)
Largest Deficit On Road	1 (1-0), vs. Concordia (11/15/13)
Largest Deficit At Home	2 (2-0), vs. UW-Superior (11/8/13)
Largest Comeback -Win/Tie	1 (4-1 Win), vs. Concordia (11/15/13)



The Last Time It Happened

COMEBACKS

GAC won when trailing after two periods

Feb. 29, 2013 vs. Bethel. Gusties trailed 2-0 after two, but came back with three goals in the third for a 3-2 win.

Opponent won when trailing after two periods

Feb. 18, 2012 at St. Olaf. Oles trailed 2-1 after two, but scored four goals in the third.

Overcame 1-goal deficit and won

GAC: November 15, 2013 vs. Concordia. Down one in the first period, the Gusties came back with four unanswered goals to capture a 4-1 victory.

OPP: Jan. 28, 2011 at St. Catherine. St. Kate's replied with two in the first for a 2-1 win.

Overcame 2-goal deficit and won

GAC: Feb. 29, 2013 vs. Bethel. Gusties trailed 2-0 after two, but came back with three goals in the third for a 3-2 win.

OPP: Feb. 18, 2012 at St. Olaf. Oles trailed 2-1 after two, but scored four goals in the third.

Overcame a 3-goal deficit and won

GAC: March 1, 1998 vs. University of Minnesota Club. Gusties scored one in the second and three in the third to win 4-3.

OPP: Never

OVERTIME GAMES

Won overtime game

GAC: March 1, 2012 vs Bethel. Courtney Boucher scored 6:25 in to overtime to win 1-0 and advance to the MIAC Championship.

OPP: March 17, 2012 vs. Plattsburgh State (NCAA Third Place Game)

Tied overtime game

Nov. 9, 2013 vs. UW-Superior (tied 2-2).

SERIES SWEEPS

Swept a 2-game regular season home and away series

GAC: Nov. 22-23, 2013 vs. Hamline. (6-0 at St. Paul, 4-1 at St. Peter).

OPP: Nov. 21-22, 2003 vs. St. Thomas. (3-1 at St. Paul, 4-2 at St. Peter).

Swept a 2-game regular season home series

GAC: Jan. 25-26, 2013 vs. Concordia. (5-1, 4-1)

OPP: Never

Swept a 2-game regular season away series

GAC: Nov. 15-16, 2013 at Concordia. (4-1, 2-0)

OPP: Never. (MIAC Playoffs: March 10-11, 2000 at Augsburg. (4-1, 2-1)

SHUTOUTS

Last Shutout

GAC: Nov. 22, 2013 at Hamline 6-0.

OPP: Dec. 3, 2010 at St. Thomas 1-0.

Last Shutout in St. Peter

GAC: Jan. 12, 2013 vs. UW-Stevens Point 1-0.

OPP: March 19, 2010 vs. Amherst 4-0. (NCAA Semifinals)

Last Road Shutout

GAC: Nov. 22, 2013 at Hamline 6-0.

OPP: Dec. 3, 2010 at St. Thomas 1-0.

Scoreless Ties (2 in program history)

Jan. 14, 2010 vs. Trinity (Conn.)

Feb. 17, 2009 at UW-Stevens Point

EXTRA ATTACKER GOALS

GAC: March 18, 2011 vs. Norwich (NCAA Semifinals, Rochester, N.Y.).

Jenna Christensen scored in final minute of a 5-4 loss.

OPP: Jan. 9, 2005 at UW-River Falls. Gusties won 6-4.

SHORTHANDED GOALS

Scored a shorthanded goal

GAC: Nov. 2, 2013 vs. Saint Mary's. Allison Eder-Zdechlik scored SH in the first period of an 8-2 win for Gustavus.

OPP: Nov. 19, 2011 at St. Thomas. Christina Rozeske scored SH in second period. Gusties 3-2 win.

Scored two shorthanded goals

GAC: Nov. 22, 2008 at St. Olaf. Melissa Mackley scored two short-handed goals in the third period. Gusties won 4-2.

OPP: Never

EMPTY NET GOALS

GAC: Nov. 16, 2013 vs. Concordia. Amanda Cartony scored EN with 19:19 on the clock in Gustavus's 2-0 win.

OPP: Feb. 18, 2012 at St. Olaf. Oles scored EN with :04 left in game. Oles won 5-2.

TEAM GOALS IN A PERIOD

Team scored 5 or more goals in a period

GAC: Feb. 23, 2013 vs. Saint Benedict. The Gusties scored six goals in the second period on their way to an 8-2 victory in St. Peter.

OPP: Dec. 3, 1998 at the University of Minnesota (Mariucci Arena.

Gophers scored five goals in the first period and won 8-1.

PENALTY SHOTS

Scored on a penalty shot

GAC: Never.

OPP: March 19, 2011 vs. Middlebury (NCAA 3rd Place Game, Rochester, N.Y.). Penalty shot goal scored after Lindsey Hjelm checking penalty in the second period. Middlebury won 5-0.

PENALTIES

Not penalized

GAC: Dec. 1, 2012 at Augsburg. GAC won 3-1.

OPP: Dec. 2, 2000 at St. Catherine. St. Kate's won 4-3.

Neither team was penalized

Jan. 30, 1998 at Saint Mary's. Gusties won 6-2.

HAT TRICKS

Last individual 3-goal game

GAC: Jan. 26, 2013 vs. Concordia. Lindsey Hjelm scored three goals (all even) in a 5-1 Gustavus win in St. Peter.

OPP: March 18, 2011 vs. Norwich (NCAA Semifinals). Julie Fortier scored the first three goals of the game in a 5-4 Norwich victory.

Last individual 4-goal game

GAC: Dec. 2, 2011 at Augsburg. Allie Schwab scored three PP goals and an even goal in a 9-0 shutout.

OPP: Never.

All goals scored by one player (3+ Goals)

GAC: Never.

OPP: Dec. 2, 2006 at Hamline. Melanie Levielle scored all three goals in a 4-3 loss.

SHOTS ON GOAL

Fewer than 15 shots in a game

GAC: Dec. 3, 1998 at the University of Minnesota, 11 shots. Minnesota won 8-1.

OPP: Nov. 23, 2013 vs. Hamline, 13 shots. Gustavus won 4-1.

Fewer than 20 shots in a game

GAC: Dec. 14, 2012 vs. UW-River Falls, 19 shots in Gustavus 3-2 win.

OPP: Nov. 23, 2013 vs. Hamline, 13 shots. Gustavus won 4-1.

40 or more shots in a game

GAC: Nov. 23, 2013 vs. UW-Superior, 41 shots. Gustavus won 4-1.

OPP: Dec. 10, 2010 at UW-River Falls, 40 shots. River Falls won 4-2.

50 or more shots in a game

GAC: Feb. 16, 2013 vs. St. Olaf, 51 shots. Gustavus won 6-2.

OPP: Nov. 23, 1998 vs. the University of Minnesota: 51 shots. Minnesota won 6-0.

60 or more shots in a game

GAC: Feb. 15, 2013 at St. Olaf, 61 shots. Gustavus won 7-4.

OPP: Feb. 5, 1998 at Boston College, 65 shots. BC won 10-1.

SINGLE GAME POINTS

Player had four points in a game

GAC: Feb. 9, 2013 vs. Saint Mary's. Lindsey Hjelm scored two goals and two assists in a 6-1 Gustavus victory.

OPP: Mar. 18, 2011 vs. Norwich (NCAA Semifinals). Julie Fortier scored three goals with an assist in a 5-4 Norwich victory.

Player had five points in a game

GAC: Dec. 2, 2011 at Augsburg. Allie Schwab scored three PP goals and an even goal with an assist in a 9-0 shutout.

OPP: Mar. 18, 2005 vs. Middlebury. (NCAA Semifinals) Lorna Grifis scored two goals with three assists in a 7-3 Middlebury win.

Player had six or more points in a game

GAC: Feb. 11, 2005 at St. Catherine. Andrea Peterson scored two goals with six assists in a 13-0 win. (Most individual points in a game in program history)

OPP: Jan. 30, 1999 at Middlebury. Michelle Labbe scored three goals with three assists in a 8-0 Middlebury win.





Carroll At A Glance

Hometown

- Edina, Minnesota

Education

- Bachelor's Degree: Recreation, Parks, and Leisure Services (Mankato State '82)

Family

- Wife Terri
- Children Matt and Mike

Coaching

- 1983-84 – Assistant Coach, University of St. Thomas
- 1984-85 – Assistant Coach, Fergus Falls High School
- 1986-87 – Head Coach, Fergus Falls Community College
- 1990-99 – Head Coach, Mankato West High School
- 1999-Present – Head Coach, Gustavus Adolphus College

Years At Gustavus: 14

All-time Record: 319-71-25

All-time MIAC Record: 222-21-12

MIAC Titles: 11

MIAC Playoff Titles: 11

NCAA Tournaments: 11

NCAA Tournament Record: 8-16-0

Final Fours: 7

Most Wins In A Season: 27 (2012-13)

Fewest Wins In A Season: 14 (2002-03)

*All-time winningest coach in Gustavus women's hockey history.

Head Coach Mike Carroll

Mike Carroll is entering his 15th season as the women's head hockey coach at Gustavus. Within his tenure behind the Gustie bench, Carroll has turned Gustavus women's hockey into one of the most successful programs in NCAA Division III. He has compiled an overall record of 319-71-25 in 14 seasons and has the most coaching victories in the history of the program.

Last season Carroll directed the Gusties to the most successful season in the history of the program. Gustavus finished the season with an NCAA record 27 wins, going 27-2-1 overall. The Gusties won the MIAC Championship for the ninth consecutive season after going a perfect 18-0-0 within conference play. After winning the MIAC Playoff title for the 10th straight year, Gustavus advanced to the NCAA Tournament for the 11th time in the 13 years. A 2-1 victory over UW-River Falls in the opening round of the NCAA Tournament earned Gustavus a trip to the NCAA Semifinals for the fourth straight season. At the Division III Frozen Four hosted in Superior, Wis., Gustavus fell to Elmira College 4-3 in overtime in the semifinals before dropping the third place game to Plattsburgh State by the score of 4-0.

Carroll has directed the Gusties to 11 MIAC regular season titles (2000-01, 2001-02, 2004-05, 2005-06, 2006-07, 2007-08, 2008-09, 2009-10, 2010-11, 2011-12, 2012-13) and has been named the MIAC Coach-of-the-Year six times (2001-02, 2003-04, 2004-05, 2005-06, 2010-11, 2012-13). In addition to coaching 30 players who have earned All-Conference honors 55 times, he has coached five MIAC Players-of-the-Year in Sarah Garrison, Andrea Peterson, Stefanie Ubl, Allie Schwab, Lindsey Hjelm. Carroll has also worked with 13 players who have earned AHCA All-America distinction 21 times and two American Hockey Coaches Association Players-of-the-Year, including four-time MIAC Player-of-the-Year and four-time All-American Andrea Peterson.

Prior to coming to Gustavus, Carroll served as the head boys' hockey coach at Mankato West High School from 1991 to 1999. Carroll's college coaching resume included a stint as head men's hockey coach at Fergus Falls Community College from 1986 to 1987 as well as a season as the assistant men's coach at the University of St. Thomas in 1983.

Carroll, an Edina, Minnesota native, competed in hockey and baseball at Mankato State. After graduating with a degree in municipal recreation in 1982, Carroll played professional baseball in the Montreal Expos organization for two years.

In addition to his hockey coaching duties at Gustavus, Carroll is also the head coach of the Golden Gustie baseball team. Mike and his wife, Terri, live in Mankato and have two sons, Matt and Mike.

2013-14 Roster Breakdown

Letterwinners Returning (13)

Maddie Bergh
Courtney Boucher
Marissa Brandt
Amanda Cartony
Melissa Doyle
Carolyn Draayer
Allison Eder-Zdechlik
Lindsey Hibbard
Tara Hoverstad
Leah Johnson
Keri Pickel
Emily Reibert
Marah Sobczak

Newcomers (12)

Mikaela Algren
Krystal Baumann
Courtney Bethune
Halie Gudmonson
Emily Gustafson
Hannah Heacox
Callie Johnson
Allie Lewis
Courtney Potter
Megan Tragiai
Riley Viner
Lydia Wagner

By Class

Seniors (5)

Maddie Pergh
Amanda Cartony
Melissa Doyle
Keri Pickel
Marah Sobczak

Juniors (5)

Krystal Baumann
Courtney Boucher
Marissa Brandt
Carolyn Draayer
Leah Johnson

Sophomores (4)

Allison Eder-Zdechlik
Lindsey Hibbard
Tara Hoverstad
Emily Reibert

First-Years (11)

Mikaela Algren
Courtney Bethune
Halie Gudmonson
Emily Gustafson
Hannah Heacox
Callie Johnson
Allie Lewis
Courtney Potter
Megan Tragiai
Riley Viner
Lydia Wagner

2013-14 Numerical Roster

No.	Name	Yr.	Pos.	Hgt.	Hometown/High School
1	Lindsey Hibbard	So.	G	5-6	Princeton, Minn./Princeton
2	Courtney Bethune	Fy.	D	5-8	Fort Frances, Ont./Warroad
3	Emily Reibert	So.	F	5-5	Inver Grove Heights, Minn./South St. Paul
4	Maddie Bergh	Sr.	D	5-4	Eden Prairie, Minn./Benilde St. Margaret's
5	Halie Gudmonson	Fy.	F/D	5-10	Albertville, Minn./St. Michael-Albertville
6	Emily Gustafson	Fy.	F	5-1	Esko, Minn./Esko
7	Lydia Wagner	Fy.	D	5-7	Zumbrota, Minn./Zumbrota-Mazeppa
8	Allison Eder-Zdechlik	So.	F	5-4	Stillwater, Minn./Stillwater
9	Amanda Cartony	Sr.	F/D	5-7	Stillwater, Minn./Stillwater
10	Courtney Boucher	Jr.	F/D	5-7	Hastings, Minn./Hastings
11	Keri Pickel	Sr.	F	5-2	Rochester, Minn./Mayo
12	Hannah Heacox	Fy.	F	5-3	Stillwater, Minn./Stillwater
13	Mikaela Algren	Fy.	D	6-1	Prior Lake, Minn./New Prague
14	Melissa Doyle	Sr.	F	5-0	White Bear Lake, Minn./Hill-Murray
15	Leah Johnson	Jr.	F	5-4	Chanhassen, Minn./Chaska
16	Riley Viner	Fy.	F	5-2	South St. Paul, Minn./South St. Paul
17	Callie Johnson	Fy.	F	5-7	Detroit Lakes, Minn./Detroit Lakes
18	Carolyn Draayer	Jr.	F	5-6	Deephaven, Minn./Minnetonka
19	Allie Lewis	Fy.	F	5-3	Kearney, Neb./Shattuck-St. Mary's
20	Megan Tragiai	Fy.	F	5-4	Shoreview, Minn./Roseville
22	Marissa Brandt	Jr.	F/D	5-6	Vadnais Heights, Minn./Hill-Murray
23	Krystal Baumann	Jr.	F	5-6	Farmington, Minn./Farmington
24	Courtney Potter	Fy.	D	5-2	Dayton, Minn./Champlin Park
33	Tara Hoverstad	So.	G	5-3	Coon Rapids, Minn./Blaine
35	Marah Sobczak	Sr.	G	5-4	Lake Elmo, Minn./Stillwater

Head Coach: Mike Carroll (15th season)

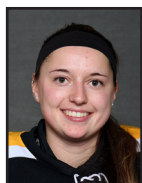
Assistant Coaches: Kirstin Peterson, Steve Carroll

Alphabetical Roster/Pronunciation Guide

NO.	NAME	Pronunciation
13	Algren, Mikaela	ALL-gren
23	Baumann, Krystal	BOW-man
4	Bergh, Maddie	
2	Bethune, Courtney	beth-OON
10	Boucher, Courtney	boo-SHAY
22	Brandt, Marissa	
9	Cartony, Amanda	car-TONY
14	Doyle, Melissa	
18	Draayer, Carolyn	DRAY-er
8	Eder-Zdechlik, Allison	ee-der-ZED-lick
5	Gudmonson, Halie	GUD-mun-son
6	Gustafson, Emily	GUST-uhf-son
12	Heacox, Hannah	HEE-cox
1	Hibbard, Lindsey	
33	Hoverstad, Tara	HOE-ver-stad
15	Johnson, Leah	
17	Johnson, Callie	CAL-lee
19	Lewis, Allie	
11	Pickel, Keri	
24	Potter, Courtney	
3	Reibert, Emily	RYE-bert
35	Sobczak, Marah	SOB-check
20	Tragiai, Megan	TRA-jeje
16	Viner, Riley	VINE-er
7	Wagner, Lydia	



Player Profiles



#1 Lindsey Hibbard
So., Goaltender
Princeton, Minn./Princeton

Season Numbers

GP	GA	Save Pct.	Record
3	2	.950	1-1-0



#2 Courtney Bethune
Fy., Defender
Fort Frances, Ont./Warroad

Season Numbers

GP	Goals	Assists	Points
7	0	2	2



#3 Emily Reibert
So., Forward
Inver Grove Heights, Minn./South St. Paul

Season Numbers

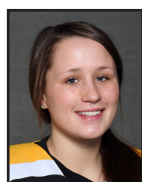
GP	Goals	Assists	Points
7	3	1	3



#4 Maddie Bergh
Sr., Defender
Eden Prairie, Minn./Benilde-St. Margaret's

Season Numbers

GP	Goals	Assists	Points
7	2	2	4



#5 Halie Gudmonson
Fy., Forward/Defender
Albertville, Minn./St. Michael-Albertville

Season Numbers

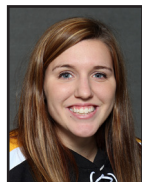
GP	Goals	Assists	Points
7	3	0	3



#6 Emily Gustafson
Fy., Forward
Esko, Minn./Esko

Season Numbers

GP	Goals	Assists	Points
7	0	3	3



#7 Lydia Wagner
Fy., Defender
Zumbrota, Minn./Zumbrota-Mazeppa

Season Numbers

GP	Goals	Assists	Points
7	1	1	2



#8 Allison Eder-Zdechlik
So., Forward
Stillwater, Minn./Stillwater

Season Numbers

GP	Goals	Assists	Points
7	7	3	10



#9 Amanda Cartony
Sr., Forward/Defender
Stillwater, Minn./Stillwater

Season Numbers

GP	Goals	Assists	Points
6	2	7	9

Player Profiles



#10 Courtney Boucher
Jr., Forward/Defender
Hastings, Minn./Hastings

Season Numbers

GP	Goals	Assists	Points
7	1	3	4



#11 Keri Pickel
Sr., Forward
Rochester, Minn./Mayo

Season Numbers

GP	Goals	Assists	Points
7	1	2	3



#12 Hannah Heacox
Fy., Forward
Stillwater, Minn./Stillwater

Season Numbers

GP	Goals	Assists	Points
5	0	0	0



#13 Mikaela Algren
Fy., Defender
Prior Lake, Minn./New Prague

Season Numbers

GP	Goals	Assists	Points
1	0	0	0



#14 Melissa Doyle
Sr., Forward
White Bear Lake, Minn./Hill-Murray

Season Numbers

GP	Goals	Assists	Points
7	2	3	5



#15 Leah Johnson
Jr., Forward
Chanhassen, Minn./Chanhassen

Season Numbers

GP	Goals	Assists	Points
7	1	0	1



#16 Riley Viner
Fy., Forward
South St. Paul, Minn./South St. Paul

Season Numbers

GP	Goals	Assists	Points
3	0	1	1



#17 Callie Johnson
Fy., Forward
Detroit Lakes, Minn./Detroit Lakes

Season Numbers

GP	Goals	Assists	Points
3	0	0	0



#18 Carolyn Draayer
Jr., Forward
Deephaven, Minn./Minnetonka

Season Numbers

GP	Goals	Assists	Points
7	2	3	5



Player Profiles



#19 Allie Lewis
Fy., Forward
Kearney, Neb./Shattuck-St. Mary's

Season Numbers

GP	Goals	Assists	Points
7	2	1	3



#20 Megan Tragiai
Fy., Forward
Shoreview, Minn./Roseville

Season Numbers

GP	Goals	Assists	Points
3	0	0	0



#22 Marissa Brandt
Jr., Forward/Defender
Vadnais Heights, Minn./Hill-Murray

Season Numbers

GP	Goals	Assists	Points
7	0	2	2



#23 Krystal Baumann
Jr., Forward
Farmington, Minn./Farmington

Season Numbers

GP	Goals	Assists	Points
2	1	0	1



#24 Courtney Potter
Fy., Defender
Dayton, Minn./Champlin Park

Season Numbers

GP	Goals	Assists	Points
5	0	0	0



#33 Tara Hoverstad
So., Goaltender
Coon Rapids, Minn./Blaine

Season Numbers

GP	GA	Save Pct.	Record
4	4	.939	3-0-1



#35 Marah Sobczak
Sr., Goaltender
Lake Elmo, Minn./Stillwater

Season Numbers

GP	GA	Save Pct.	Record
3	2	.913	1-0-0

Gustavus Adolphus Hockey
Gustavus Adolphus Combined Team Statistics (as of Dec 04, 2013)
All games

Date	Opponent	Score	Att.
* Nov 02	SAINT MARY'S UNIV.	W 8-2	77
Nov 08	#9 UW-SUPERIOR	L 1-2	173
Nov 09	UW-SUPERIOR	Tot 2-2	131
* Nov 15	at Concordia-M'head	W 4-1	212
* Nov 16	at Concordia-M'head	W 2-0	152
* Nov 22	at Hamline University	W 6-0	140
* Nov 23	HAMLIN UNIVERSITY	W 4-1	251

TEAM STATISTICS	GAC	OPP
SHOT STATISTICS		
Goals-Shot attempts	27-259	8-129
Shot pct.	.104	.062
Goals/Game	3.9	1.1
Shots/Game	37.0	18.4
POWER PLAYS		
Goals-Power Plays	8-30	2-23
Conversion Percent	.267	.087
Shot Attempts	59	23
Shot Percent	.136	.087
GOAL BREAKDOWN		
Power Play	8	2
Short-handed	1	0
Empty net	1	0
Penalty	0	0
Unassisted	4	2
Overtime	0	0
Shootout	0	0
Delayed Penalty	0	0
PENALTIES		
Number	25	34
Minutes	50	71
Penalties/Game	3.6	4.9
Pen minutes/Game	7.1	10.1
SHOOTOUTS (Made-Att)	0-0	0-0

Record:	Overall	Home	Away	Neutral
ALL GAMES	5-1-1	2-1-1	3-0-0	0-0-0
CONFERENCE	5-0-0	2-0-0	3-0-0	0-0-0
NON-CONFERENCE	0-1-1	0-1-1	0-0-0	0-0-0

##	Player	gp	g	a	pts	sh	sh%	pen-min	pp	sh
8	A. Eder-Zdechlik	7	7	3	10	35	.200	0-0	3	1
9	Amanda Cartony	6	2	7	9	14	.143	0-0	0	0
14	Melissa Doyle	7	2	3	5	18	.111	1-2	0	0
18	Carolyn Draayer	7	2	3	5	34	.059	1-2	1	0
4	Maddie Bergh	7	2	2	4	11	.182	4-8	0	0
10	Courtney Boucher	7	1	3	4	25	.040	4-8	0	0
5	Halie Gudmonson	7	3	0	3	12	.250	4-8	2	0
19	Allie Lewis	7	2	1	3	9	.222	2-4	0	0
3	Emily Reibert	7	2	1	3	19	.105	0-0	0	0
11	Keri Pickel	7	1	2	3	13	.077	0-0	0	0
6	Emily Gustafson	7	0	3	3	9	.000	0-0	0	0
7	Lydia Wagner	7	1	1	2	19	.053	3-6	1	0
2	Courtney Bethune	7	0	2	2	12	.000	1-2	0	0
22	Marissa Brandt	7	0	2	2	8	.000	1-2	0	0
23	Krystal Baumann	2	1	0	1	7	.143	0-0	1	0
15	Leah Johnson	7	1	0	1	3	.333	1-2	0	0
16	Riley Viner	3	0	1	1	2	.000	0-0	0	0
13	Mikaela Algren	2	0	0	0	0	.000	0-0	0	0
12	Hannah Heacox	5	0	0	0	2	.000	0-0	0	0
17	Callie Johnson	3	0	0	0	2	.000	0-0	0	0
24	Courtney Potter	5	0	0	0	1	.000	1-2	0	0
20	Megan Tragjai	3	0	0	0	4	.000	0-0	0	0
TM	TEAM	2	0	0	0	0	.000	2-4	0	0
Total		7	27	34	61	259	.104	25-50	8	1
Opponents		7	8	9	17	129	.062	34-71	2	0

##	Goalie	gp	min	ga	gaavg	saves	save%	w-l-t
1	Lindsey Hibbard	3	139:05	2	0.86	38	.950	1-1-0
33	Tara Hoverstad	4	198:21	4	1.21	62	.939	3-0-1
35	Marah Sobczak	3	86:39	2	1.38	21	.913	1-0-0
TM	EMPTY NET	2	0:55	0	-	0	.000	0-0-0
Total		7	425:00	8	1.13	121	.938	5-1-1
Opponents		7	425:00	27	3.81	232	.896	1-5-1

Attendance Summary	GAC	Opponent
Total	632	504
Dates/Avg Per Date	4/158	3/168
Neutral Site #/Avg	0/0	

Goals by Period	1st	2nd	3rd	Total
Gustavus Adolphus	7	8	12	27
Opponents	5	2	1	8

Saves by Period	1st	2nd	3rd	Total
Gustavus Adolphus	39	38	41	121
Opponents	78	79	70	232



Gustavus Adolphus Hockey
Gustavus Adolphus Overall Team Statistics (as of Dec 04, 2013)
All games

Overall: 5-1-1 Conf: 5-0-0 Home: 2-1-1 Away: 3-0-0 Neut: 0-0-0

TEAM STATISTICS	GAC	OPP
SHOT STATISTICS		
Goals-Shot attempts	27-259	8-129
Shot pct.	.104	.062
Goals/Game	3.9	1.1
Shots/Game	37.0	18.4
Assists	34	9
POWER PLAYS		
Goals-Power Plays	8-30	2-23
Conversion Percent	.267	.087
Shot Attempts	59	23
Shot Percent	.136	.087
GOAL BREAKDOWN		
Total Goals	27	8
Power Play	8	2
Short-handed	1	0
Empty net	1	0
Penalty	0	0
Unassisted	4	2
Overtime	0	0
Shootout	0	0
Delayed Penalty	0	0
PENALTIES		
Number	25	34
Minutes	50	71
Penalties/Game	3.6	4.9
Pen minutes/Game	7.1	10.1
Minor	25	33
Major	0	1
10-minute Misconduct	0	0
Game Misconduct	0	0
Gross Misconduct	0	0
Match	0	0
SHOOTOUTS (Made-Att)	0-0	0-0
ATTENDANCE		
Total	632	504
Dates/Avg Per Date	4/158	3/168
Neutral Site #/Avg	0/0	

Goals by Period	1st	2nd	3rd	Total
Gustavus Adolphus	7	8	12	27
Opponents	5	2	1	8

Saves by Period	1st	2nd	3rd	Total
Gustavus Adolphus	39	38	41	121
Opponents	78	79	70	232

Gustavus Adolphus Hockey
Gustavus Adolphus Category Leaders (as of Dec 04, 2013)
All games

##	Points	GP	G	A	Pts	Sh
8	A. Eder-Zdechlik	7	7	3	10	35
9	Amanda Cartony	6	2	7	9	14
14	Melissa Doyle	7	2	3	5	18
18	Carolyn Draayer	7	2	3	5	34
4	Maddie Bergh	7	2	2	4	11
10	Courtney Boucher	7	1	3	4	25
5	Halie Gudmonson	7	3	0	3	12
19	Allie Lewis	7	2	1	3	9
3	Emily Reibert	7	2	1	3	19
11	Keri Pickel	7	1	2	3	13

##	Goals	GP	G	A	Pts	Sh
8	A. Eder-Zdechlik	7	7	3	10	35
5	Halie Gudmonson	7	3	0	3	12
9	Amanda Cartony	6	2	7	9	14
14	Melissa Doyle	7	2	3	5	18
18	Carolyn Draayer	7	2	3	5	34
4	Maddie Bergh	7	2	2	4	11
19	Allie Lewis	7	2	1	3	9
3	Emily Reibert	7	2	1	3	19
10	Courtney Boucher	7	1	3	4	25
11	Keri Pickel	7	1	2	3	13

##	Power-Play Goals	GP	PPG
8	A. Eder-Zdechlik	7	3
5	Halie Gudmonson	7	2

##	Short-Handed Goals	GP	SHG
8	A. Eder-Zdechlik	7	1

##	Game-Winning Goals	GP	GWG
19	Allie Lewis	7	1
11	Keri Pickel	7	1
5	Halie Gudmonson	7	1
3	Emily Reibert	7	1
15	Leah Johnson	7	1

##	Plus/Minus	GP	+/-
2	Courtney Bethune	7	+8
9	Amanda Cartony	6	+8
10	Courtney Boucher	7	+7
4	Maddie Bergh	7	+6
8	A. Eder-Zdechlik	7	+5
5	Halie Gudmonson	7	+4
11	Keri Pickel	7	+4
3	Emily Reibert	7	+4
6	Emily Gustafson	7	+4
22	Marissa Brandt	7	+3

##	Assists	GP	G	A	Pts	Sh
9	Amanda Cartony	6	2	7	9	14
8	A. Eder-Zdechlik	7	7	3	10	35
14	Melissa Doyle	7	2	3	5	18
18	Carolyn Draayer	7	2	3	5	34
10	Courtney Boucher	7	1	3	4	25
6	Emily Gustafson	7	0	3	3	9
4	Maddie Bergh	7	2	2	4	11
11	Keri Pickel	7	1	2	3	13
2	Courtney Bethune	7	0	2	2	12
22	Marissa Brandt	7	0	2	2	8

##	Shots	GP	G	A	Pts	Sh	Sh%
8	A. Eder-Zdechlik	7	7	3	10	35	.200
18	Carolyn Draayer	7	2	3	5	34	.059
10	Courtney Boucher	7	1	3	4	25	.040
3	Emily Reibert	7	2	1	3	19	.105
7	Lydia Wagner	7	1	1	2	19	.053
14	Melissa Doyle	7	2	3	5	18	.111
9	Amanda Cartony	6	2	7	9	14	.143
11	Keri Pickel	7	1	2	3	13	.077
5	Halie Gudmonson	7	3	0	3	12	.250
2	Courtney Bethune	7	0	2	2	12	.000

##	Shot Pct.	GP	G	A	Pts	Sh	Sh%
15	Leah Johnson	7	1	0	1	3	.333
5	Halie Gudmonson	7	3	0	3	12	.250
19	Allie Lewis	7	2	1	3	9	.222
8	A. Eder-Zdechlik	7	7	3	10	35	.200
4	Maddie Bergh	7	2	2	4	11	.182
23	Krystal Baumann	2	1	0	1	7	.143
9	Amanda Cartony	6	2	7	9	14	.143
14	Melissa Doyle	7	2	3	5	18	.111
3	Emily Reibert	7	2	1	3	19	.105
11	Keri Pickel	7	1	2	3	13	.077

##	Penalties	GP	Pen	Min
4	Maddie Bergh	7	4	8
5	Halie Gudmonson	7	4	8
10	Courtney Boucher	7	4	8
7	Lydia Wagner	7	3	6
19	Allie Lewis	7	2	4
TM	TEAM	2	2	4
18	Carolyn Draayer	7	1	2
14	Melissa Doyle	7	1	2
24	Courtney Potter	5	1	2
2	Courtney Bethune	7	1	2

##	Penalty Minutes	GP	Pen	Min
4	Maddie Bergh	7	4	8
5	Halie Gudmonson	7	4	8
10	Courtney Boucher	7	4	8
7	Lydia Wagner	7	3	6
TM	TEAM	2	2	4
19	Allie Lewis	7	2	4
15	Leah Johnson	7	1	2
18	Carolyn Draayer	7	1	2
14	Melissa Doyle	7	1	2
24	Courtney Potter	5	1	2



Gustavus Adolphus Hockey
Gustavus Adolphus Team Game-by-Game (as of Dec 04, 2013)
All games

Date	Opponent	Score	G	A	Pts	Sh	Sh%	+/-	Pen-Min	PP	SH	EN	GW	GT	Hat	UA	Blk
Nov 02, 2013	SAINT MARY'S UNIV.	8-2	8	11	19	36	.222	+13	5-10	3	1	0	1	0	0	0	8
Nov 08, 2013	UW-SUPERIOR	1-2	1	1	2	22	.045	-4	7-14	0	0	0	0	0	0	0	10
Nov 09, 2013	UW-SUPERIOR	2-2	2	1	3	43	.047	-5	3-6	1	0	0	0	0	0	1	15
Nov 15, 2013	at Concordia-M'head	4-1	4	4	8	35	.114	+15	3-6	1	0	0	1	0	0	1	1
Nov 16, 2013	at Concordia-M'head	2-0	2	1	3	34	.059	+10	2-4	0	0	1	1	0	0	1	3
Nov 22, 2013	at Hamline University	6-0	6	8	14	48	.125	+25	1-2	1	0	0	1	0	0	1	5
Nov 23, 2013	HAMLIN UNIVERSITY	4-1	4	8	12	41	.098	+10	4-8	2	0	0	1	0	0	0	7
		27-8	27	34	61	259	.104	+64	25-50	8	1	1	5	0	0	4	49
	Opponent		8	9	17	129	.062	-65	34-71	2	0	0	1	1	0	2	88

TEAM PER-GAME

Games played: 7

Shots per game: 37.00;Goals per game: 3.86

Assists per game: 4.86;Points per game: 8.71