



2012-13 GUSTAVUS ADOLPHUS COLLEGE WOMEN'S HOCKEY GAME NOTES

2012 GUSTAVUS SCHEDULE

DATE OPPONENT TIME/RESULT

OCTOBER

30 UW-SUPERIOR W 3-2

NOVEMBER

9 BETHEL UNIVERSITY* W 3-1

10 Bethel University* W 2-0

16 University of St. Thomas* W 4-1

17 UNIVERSITY OF ST. THOMAS* W 1-0

30 AUGSBURG COLLEGE* W 5-0

DECEMBER

1 Augsburg College* W 3-1

8 BETHEL UNIVERSITY W 3-1

12 UW-River Falls W 2-1

14 UW-RIVER FALLS W 3-2

JANUARY

11 UW-STEVENS POINT W 7-3

12 US-STEVENS POINT W 1-0

18 ST. CATHERINE UNIVERSITY* W 2-1

19 St. Catherine University* W 3-1

25 CONCORDIA COLLEGE* W 5-1

26 CONCORDIA COLLEGE* W 4-1

FEBRUARY

1 HAMLINE UNIVERSITY* W 3-1

2 Hamline University* W 2-0

5 UW-Superior T 1-1

8 SAINT MARY'S UNIVERSITY* W 3-1

9 Saint Mary's University* W 6-1

15 St. Olaf College* W 7-4

16 ST. OLAF COLLEGE* W 6-2

22 College of Saint Benedict* 7:30 p.m.

23 COLLEGE OF SAINT BENEDICT* 2:00 p.m.

HOME GAMES in BOLD FACE CAPS

* Conference Game

Series Information

#2 GUSTAVUS ADOLPHUS COLLEGE

"Golden Gusties"
22-0-1, 14-0-0 MIAC



COLLEGE OF SAINT BENEDICT

"Blazers"
5-11-4, 3-11-2 MIAC



Game 24 - St. Cloud, Minn.

DATE: Friday, February 22nd, 2013

TIME: 7:30 p.m.

ARENA: St. Cloud Municipal Athletic Complex

WEB VIDEO: Not Available

LIVE STATS: Not Available

Game 25 - St. Peter, Minn.

DATE: Saturday, February 23rd, 2013

TIME: 2:00 p.m.

ARENA: Don Roberts Ice Rink

TICKET INFORMATION: \$5.00/Adult; \$4.00/Visiting college students with ID; \$2.00/Age 12-18; Free under age 12 and over age 62

WEB VIDEO: <http://client.stretchinternet.com/client/gac.portal#>

LIVE STATS: <https://gustavus.edu/athletics/whky/LIVE/xlive.htm>

Gustie Athletics Social Media

twitter

@gustieathletics

facebook

facebook.com/GustieAthletics

You Tube

youtube.com/gustavusathletics

flickr

flickr.com/photos/gogusties

GameCentral

client.stretchinternet.com/client/gac.portal

12-TIME MIAC CHAMPION



2012-13 GUSTAVUS ADOLPHUS WOMEN'S HOCKEY GAME NOTES

GUSTAVUS QUICK FACTS

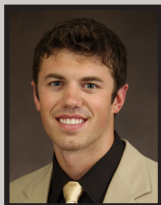
Location:	St. Peter, Minnesota
Address:	800 West College Ave. St. Peter, MN 56082
Founded:	1862
Enrollment:	2,572
Nickname:	Golden Gusties
School Colors:	Black and Gold
Home Rink:	Don Roberts Ice Rink
NCAA Affiliation:	NCAA Division III
Conference:	Minnesota Intercollegiate Athletic
NCAA Affiliation:	NCAA Division III
President:	Jack R. Ohle
Athletic Director:	Tom Brown
Assistant Athletic Director:	Jared Phillips
Athletic Trainer:	Troy Banse
Equipment Manager:	Wayne Norman

GUSTAVUS HOCKEY FACTS

2011-12 Record:	24-4-2
2011-12 MIAC Record/Finish:	16-1-1/First
All-Time Record:	344-87-24
All-Time MIAC Record:	226-23-12
MIAC Championships :	11
Letterwinners Returning/Lost:	17/9
All-MIAC Honorees Returning/Lost:	2/2

MEDIA CONTACTS

Primary Contact:



Tyler Grey
Sports Information Graduate Assistant
Email: tgrey@gustavus.edu
Office: 507-933-8411
Cell: 320-226-2083
Fax: 507-933-8412

Secondary Contact:



Ethan Armstrong
Sports Information Director
Email: earmstr2@gustavus.edu
Office: 507-933-7647
Cell: 320-815-2351
Fax: 507-933-8412

WOMEN'S HOCKEY RECORDS

All-Time Team Season Records

Most wins: 25; 04-05, 06-07, 07-08
Fewest wins: 14; 02-03
Most losses: 12; 97-98
Fewest losses: 3; 06-07, 07-08
Most shutouts: 13; 04-05, 08-09
Most goals: 172; 99-00
Most assists: 220; 00-01
Most points: 386; 00-01
Lowest GAA: 0.74; 08-09

All-Time Individual Game Records

Most goals: 6; Sarah Moe vs. Bethel (2/3/01)
Most assists: 6; Andrea Peterson vs. St. Catherine (2/11/05)
Most points: 8; Andrea Peterson vs. St. Catherine (2/11/05)
Fastest goal: 0:08; Noelle Skalko vs. Saint Mary's (2/27/98)

All-Time Individual Season Records

Most goals: 32; Andrea Peterson (04-05)
Most assists: 40; Noelle Skalko (97-98)
Most points: 68; Noelle Skalko (97-98)
Most penalties: 31; Linnea Carlson (99-00), Lindsey Hjelm (10-11)
Most penalty minutes: 62; Linnea Carlson (99-00), Lindsey Hjelm (10-11)
Lowest goals against average (6 game minimum): 0.69; Emily Klatt (08-09)
Most hat tricks: 4; Amy Black (97-98), Linnea Carlson (99-00), Sarah Moe (00-01)

All-Time Individual Career Records

Most goals: 80; Sarah Moe (98-99, 00-02)
Most assists: 107; Andrea Peterson (03-07)
Most points: 185; Andrea Peterson (03-07)

Goalie Records (min. 500 minutes)

Most minutes: 4273:56; Danielle Justice (08-12)
Goals against average: 0.95; Michelle Schaefer (00-01)
Saves: 1,094; Danielle Justice (08-12)
Save percentage: .936; Danielle Justice (08-12)
Wins: 55; Danielle Justice (08-12)



2012-13 GUSTAVUS ADOLPHUS WOMEN'S HOCKEY GAME NOTES

STATISTICAL COMPARISON

Gustavus		Saint Benedict
3.43 (1st)	Goals For	1.70 (8th)
1.13 (1st)	Goals Against	2.45 (8th)
19.8 (2nd)	Power Play	6.0 (10th)
88.4 (2nd)	Penalty Kill	79.2 (9th)
49.4 (6th)	Combined Special Teams	40.0 (10th)
6.5 (9th)	Penalty Minutes	8.0 (5th)

- 2012-13 Overall per game averages with MIAC ranks

THE SERIES

Gustavus vs. Saint Benedict

All-Time	31-0-0
Last Meeting	W 7-2 (2/25/12)
Current Streak	W 31

Head Coach Mike Carroll

Record at Gustavus	309-68-23
vs. Saint Benedict	26-0-0

Head Coach Jennifer Kranz

Record at Saint Benedict	10-28-7
vs. Gustavus	0-2-0

Last 10 Meetings	10-0-0
------------------	--------

Date	Location	Result
2/25/12	St. Cloud	W 7-2
2/24/12	St. Peter	W 9-1
1/22/11	St. Peter	W 2-1
1/21/11	St. Cloud	W 8-1
1/23/10	St. Peter	W 4-0
1/22/10	St. Cloud	W 7-1
1/31/09	St. Peter	W 4-1
1/30/09	St. Cloud	W 5-1
2/9/08	St. Peter	W 6-0
2/8/08	St. Cloud	W 3-0

* - Denotes MIAC Playoff game

GAME NOTES

GUSTAVUS EMBARKS ON 16TH SEASON OF WOMEN'S HOCKEY...

The Gustavus women's hockey team is currently in its 16th season. Founded in 1997, the Gusties have attained an all-time record of 327-87-23, which stands second winningest program in all of NCAA Division III women's hockey. The Gustie women have won 11 Minnesota Intercollegiate Athletic Conference (MIAC) titles in the 14 years of women's hockey in the conference. Those 11 titles rank first in front of St. Thomas, Augsburg, and Saint Mary's, who all have two championships apiece.

GUSTAVUS COACHING STAFF... Head Coach Mike Carroll has entered his 14th season at the helm of the women's hockey program. At Gustavus, Carroll has amassed an overall record of 292-68-22, and an MIAC mark of 206-21-4. Under Carroll's direction, the Gusties have won 10 regular season and playoff MIAC championships and have reached the NCAA Tournament 10 consecutive times. He has been named the MIAC Coach of the Year five seasons. A native of Edina, Minn., Carroll graduated from Mankato State with a degree in municipal recreation in 1982 after participating in hockey and baseball in his time as a Maverick. Prior to coming to Gustavus, Carroll was the Mankato West High School boy's hockey coach from 1991 to 1999.

A former Gustavus women's hockey standout and three-time All-American, Kirstin Peterson '11 is in her second season as an assistant coach for the Three Crowns. While earning All-Conference honors in all four seasons, Peterson racked up 75 career points (16G, 59A), which ranks third all-time among Gustavus defenders. Following her graduation with a degree in health fitness in 2011, Peterson also worked as the director of club sports at Gustavus Adolphus.

Now in his 12th season as an assistant coach for the Gustie women, Steve Carroll will look to bring along a trio of first-year goalies. Carroll brings over 25 years of experience working with goalies, and is regarded as one of the top goalie instructors in the midwest. A native of Edina, Minn., Steve has his own goalie school and each year coaches hundreds of boys and girls of all skill levels.

GEOGRAPHY LESSON... The 2012-13 Gustavus women's hockey roster features 23 players that reside in three different states. With 21 players from Minnesota, just four players make their home in states across the boarder. The three Gusties who are not Minnesota natives include Meagan Wanecke from Delafield, Wis., and Colleen Jacoby from Muskegon, Mich.

CALLING ALL CAPTAINS... In the 16-year history of the program, 30 women's hockey players have earned the honor of being a captain. This year's captains, Jenna Christensen (Sr., Albert Lea, Minn.) and Lindsey Hjelm (Sr., North Oaks, Minn.), take the reigns after serving as assistant captains last season. They are just the second tandem to serve back-to-back seasons as captains together. The only other twosome to do so was Mollie Carroll '12 and Kirstin Peterson '11 who served together in the 2009-10 and 2010-11 seasons.

LAST WEEKEND... Last weekend, Gustavus came away with a sweep over St. Olaf, defeating the Oles 7-4 in Northfield on Friday night before returning home to St. Peter with a 6-2 win on Saturday afternoon.



2012-13 GUSTAVUS ADOLPHUS WOMEN'S HOCKEY GAME NOTES

GUSTAVUS' 2012-13 RECORD WHEN...

At home	13-0-0
On the road	9-0-1
Neutral Site	0-0-0
vs. MIAC	16-0-0
vs. Non-conference	6-0-1
vs. Top 10	7-0-1
GAC scores 4 or more goals	8-0-0
GAC scores 3 goals	8-0-0
GAC scores 2 or fewer goals	6-0-1
GAC scores first	20-0-1
Opponent scores first	2-0-0
GAC leads after 1st period	14-0-1
Opponent leads after 1st period	1-0-0
Tied after 1st period	7-0-0
GAC leads after 2nd period	18-0-0
Opponent leads after 2nd period	0-0-0
Tied after 2nd period	4-0-1
In overtime	0-0-1
Games decided by one goal	6-0-0
Games decided by two goals	8-0-0
Games decided by three goals	3-0-0
Games decided by four or more	5-0-0
GAC scores on the power play	12-0-0
GAC scoreless on the power play	8-0-1
GAC scores two or more PP goals	2-0-0
GAC outshoots opponent	20-0-1
GAC outshot by opponent	2-0-0
Shots equal	0-0-0
Tuesday	1-0-1
Wednesday	1-0-0
Friday	10-0-0
Saturday	10-0-0
In October	1-0-0
In November	5-0-0
In December	4-0-0
In January	6-0-0
In February	6-0-1
Following a win	20-0-1
Following a loss	0-0-0
Following a tie	1-0-0
Night games	12-0-1
Day games	8-0-0

GAME NOTES

The Gusties got off to an early 2-0 lead in the first period on Friday night thanks to goals from Courtney Boucher (So., Hastings, Minn.) and Allison Eder-Zdechlik (Fy., Stillwater, Minn.). The Oles came back in the second period with a goal that marked the beginning of what proved to be a back-and-forth affair for the next two periods.

After St. Olaf cut the score to 2-1, Gustavus came back with a goal from Carolyn Draayer (So., Deephaven, Minn.). Not to be outdone, the Oles scored again to cut the lead to 3-2. Meagan Wanecke (Sr., Delafield, Wis.) scored in the early minutes of the third period to put the Gustie women on top 4-2 only to be matched by St. Olaf once again. Eder-Zdechlik scored her second goal of the game and was followed by an Ole goal just :20 seconds later to make the score 5-4. Gustavus finally put the game out of reach with goals from Lindsey Hjelm and Jenna Christensen for a final score of 7-4.

Saturday saw the Gusties off to a similar start. Gustavus opened the first period with a 2-0 lead after goals from Kelly Thotland (So., Edina, Minn.) and Meagan Wanecke. St. Olaf answered with a goal late in the first period with just :02 seconds remaining on the power play.

Melissa Doyle (Jr., White Bear Lake, Minn.) opened up the second period with a goal, but the Oles were quick to respond with a goal of their own to cut the lead to 3-2. From there, the Black and Gold went on to score three unanswered goals over the final 36 minutes of play. Draayer scored twice and Eder-Zdechlik added her third goal of the weekend to wrap up the 6-2 victory.

ABOUT THE BLAZERS... Saint Benedict enters this weekend on a four-game losing-streak. During that span, the Blazers have been swept by St. Olaf (3-2, 3-1) and Bethel (3-2, 6-1). Last weekend, Saint Benedict dropped a pair of games to the MIAC's third-place Bethel Royals with a 3-2 loss on Friday night and a 6-1 loss on Saturday afternoon.

On Friday, Siri Berg-Moberg scored the game's first goal to put the Blazers on top 1-0 in the first period before Bethel came back to score three unanswered goals in the second and third. Alli O'Brien made things interesting midway through the final frame with a goal to pull within a score with the count 3-2, but Saint Benedict could do no further damage as the two teams skated to a 3-2 final score.

Saturday afternoon saw the Royals come out and score the first four goals of the contest, three of which came in the opening period. Mara Kohl got the Blazers on the scoreboard in the third period with a goal, but it was too little too late for Saint Benedict in the 6-1 loss.

On the season, Saint Benedict is led in scoring by Alli O'Brien. The sophomore leads the team in goals (6), assists (5), and points (11) in large part due to a team-high 54 shots on goal. Between the pipes, Jenna Traut has seen the brunt of the action for the Blazers. Traut has allowed 29 goals in 813:54 for a goals against average of 2.14 while making 374 saves on her way to a record of 3-8-2.

SCORING MACHINE... After averaging 3.14 goals per game through the first 21 games this season, Gustavus broke out for 13 goals in two games last weekend, an average of 6.5 goals per game. The 13 Gustie goals are



2012-13 GUSTAVUS ADOLPHUS WOMEN'S HOCKEY GAME NOTES

2012-13 MIAC STANDINGS

SCHOOL	MIAC	POINTS	OVERALL
Gustavus **	16-0-0	32	22-0-1
St. Thomas *	11-4-1	23	12-7-2
Bethel *	10-4-2	22	13-8-2
Concordia *	10-4-2	22	11-7-4
St. Catherine	6-7-3	15	9-11-3
St. Olaf	7-8-1	15	11-10-2
Saint Mary's	4-10-2	10	6-13-2
Saint Benedict	3-11-2	8	5-11-4
Hamline	2-11-3	7	5-13-5
Augsburg	2-12-2	6	6-15-2

*Clinched MIAC Playoff bid

**MIAC Regular Season Champion

AROUND THE LEAGUE

Friday, Feb. 15

Saint Mary's @ Bethel | 7:00 p.m.

Augsburg @ Concordia | 7:00 p.m.

St. Catherine @ St. Olaf | 7:30 p.m.

Hamline @ St. Thomas | 7:30 p.m.

Saturday, Feb. 16

St. Olaf @ St. Catherine | 2:00 p.m.

St. Thomas @ Hamline | 2:00 p.m.

Bethel @ Saint Mary's | 2:00 p.m.

Augsburg @ Concordia | 2:00 p.m.

USCHO.COM DIII WOMEN'S POLL

No.	Team	Record	Points	Last Poll
1	Plattsburgh	23-0-2	147	1
2	Gustavus Adolphus	22-0-1	138	2
3	Norwich	19-3-3	108	4
4	Middlebury	16-6-2	98	6
5	Elmira	20-4-1	92	3
6	Wisconsin-River Falls	18-5-2	78	5
7	Bowdoin	18-4-2	67	7
8	Wisconsin-Superior	16-7-2	36	8
9	Adrian	19-5-1	26	9
10	Manhattanville	16-8-1	13	NR

GAME NOTES

the most scored by any MIAC team against a league opponent in a two-game series this season.

GUSTIES IN THE POLLS... The Gusties are ranked in the top ten for the 14th time this season according to the latest USCHO.com Division III women's hockey Poll. The last time Gustavus fell outside of the top ten was the week of Jan. 11th, 2010. This week is the 11th consecutive week the Gustie women have ranked in at No. 2 behind Plattsburgh State.

WRITING THE RECORD BOOK... Although a perfect season is now out of reach, Gustavus' unbeaten season remains alive. The Gusties have already claimed the longest winning- and unbeaten-streaks in program history with tallies of 18 and 23 games, respectively, and will look to add to their current unbeaten-streak this weekend.

THE LAST TIME THEY MET... The last time these two teams met, it was Feb. 25th of last season when the Gusties pulled away with a 7-2 win at the Municipal Athletic Complex in St. Cloud. With a 1-1 score after the first period, Gustavus went on to score six unanswered goals through the second and third periods before the Blazers capped the scoring with a goal late to bring the final score to 7-2. Of the seven goals, six different players scored for the Gusties, led by Amanda Cartony (Jr., Stillwater, Minn.) with two.

SENIOR DAY SATURDAY... As is tradition at Gustavus, the final home game of the regular season is designated as Senior Day and a special tribute is made to the individuals who have dedicated themselves to the Gustavus women's hockey program for the past four years. This year, the Athletic Department would like to extend a sincere thank you to seniors Jenna Christensen, Lindsey Hjelm, Kayla Ingbretson, Kelsey Kennedy, and Meagan Wanecke.

BY THE NUMBERS...

57 - The number of consecutive weeks the Gusties have been ranked in the USCHO.com top-ten. Gustavus' streak of being ranked in the top-ten was extended on Monday when it was named a top-ten team for the 57th consecutive week.

1.13 - Gustavus' goals against average this season. The Gusties are giving up an average of 1.13 goals per game this season, which ranks first in the MIAC and third in all of NCAA Division III women's hockey.

5 - The number of power play goals the Gusties scored last weekend. After scoring just 12 power play goals all season, Gustavus erupted to score five goals with the advantage in two games last weekend, scoring twice on the power play Friday night and three times on Saturday afternoon. It was the first time all season that the Gusties have scored multiple times on the power play in the same game.

12 - The number of players who registered a point in last weekend's sweep of St. Olaf. With a total of 13 goals and 15 assists last weekend, 12 different Gustie players recorded a point in the series, with eight of them scoring at least one goal.



THE LAST TIME IT HAPPENED...

COMEBACKS

GAC won when trailing after two periods

Nov. 22, 2008 vs. St. Olaf. Gusties scored three in the third to win 4-2.

Opponent won when trailing after two periods

Feb. 18, 2012 at St. Olaf. Oles trailed 2-1 after two, but scored four goals in the third.

Overcame 1-goal deficit and won

GAC: Dec. 12, 2012 at UW-River Falls. UW-River Falls scored in the first period, but the Gusties answered with goals in the second and third to take the win 2-1.

OPP: Jan. 28, 2011 at St. Catherine. St. Kate's replied with two in the first for a 2-1 win.

Overcame 2-goal deficit and won

GAC: Nov. 17, 2006 vs. Concordia. GAC answered with a goal in the second and two in the third for a 3-2 victory.

OPP: Feb. 18, 2012 at St. Olaf. Oles trailed 2-1 after two, but scored four goals in the third.

Overcame a 3-goal deficit and won

GAC: March 1, 1998 vs. University of Minnesota Club. Gusties scored one in the second and three in the third to win 4-3.

OPP: Never

OVERTIME GAMES

Won overtime game

GAC: March 1, 2012 vs Bethel. Courtney Boucher scored 6:25 in to overtime to win 1-0 and advance to the MIAC Championship.

OPP: March 17, 2012 vs. Plattsburgh State (NCAA Third Place Game)

Tied overtime game

Feb. 5, 2013 at UW-Superior: 1-1.

SERIES SWEEPS

Swept a 2-game regular season home and away series

GAC: Feb. 15-16, 2013 vs. St. Olaf. (7-4 in Northfield, 6-2 in St. Peter).

OPP: Nov. 21-22, 2003 vs. St. Thomas. (3-1 at St. Paul, 4-2 at St. Peter).

Swept a 2-game regular season home series

GAC: Jan. 25-26, 2013 vs. Concordia. (5-1, 4-1)

OPP: Never

Swept a 2-game regular season away series

GAC: Jan. 6-7, 2012 at UW-Stevens Point. (6-0, 5-2)

OPP: Never. (MIAC Playoffs: March 10-11, 2000 at Augsburg. (4-1, 2-1)

SHUTOUTS

Last Shutout

GAC: Feb. 2, 2013 at Hamline, 2-0.

OPP: Dec. 3, 2010 at St. Thomas 1-0.

Last Shutout in St. Peter

GAC: Jan. 12, 2013 vs. UW-Stevens Point 1-0.

OPP: March 19, 2010 vs. Amherst 4-0. (NCAA Semifinals)

Last Road Shutout

GAC: Feb. 2, 2013 at Hamline, 2-0.

OPP: Dec. 3, 2010 at St. Thomas 1-0.

Scoreless Ties (2 in program history)

Jan. 14, 2010 vs. Trinity (Conn.)

Feb. 17, 2009 at UW-Stevens Point

EXTRA ATTACKER GOALS

GAC: March 18, 2011 vs.

Norwich (NCAA Semifinals, Rochester, N.Y.). Jenna

Christensen scored in final minute of a 5-4 loss.

OPP: Jan. 9, 2005 at UW-River Falls. Gusties won 6-4.

SHORTHANDED GOALS

Scored a shorthanded goal

GAC: Jan. 11, 2013 vs. UW-Stevens Point. Lindsey Hjelm scored on UWSP power play in GAC 7-3 win.

OPP: Nov. 19, 2011 at St.

Thomas. Christina Rozeske scored SH in second period. Gusties 3-2 win.

Scored two shorthanded goals

GAC: Nov. 22, 2008 at St. Olaf. Melissa Mackley scored two short-handed goals in the third period. Gusties won 4-2.

OPP: Never.

EMPTY NET GOALS

GAC: Feb. 16, 2013 at St. Olaf. Jenna Christensen scored EN with :29 left. Gusties won 7-4.

OPP: Feb. 18, 2012 at St. Olaf. Oles scored EN with :04 left in game. Oles won 5-2.

TEAM GOALS IN A PERIOD

Team scored 5 or more goals in a period

GAC: Jan. 21, 2011 at Saint Benedict. Gusties scored five goals in the third period and won 8-1.

OPP: Dec. 3, 1998 at the University of Minnesota (Mariucci Arena). Gophers scored five goals in the first period and won 8-1.

PENALTY SHOTS

Scored on a penalty shot

GAC: Never.

OPP: March 19, 2011 vs.

Middlebury (NCAA 3rd Place Game, Rochester, N.Y.). Penalty shot goal scored after Lindsey Hjelm checking penalty in the second period. Middlebury won 5-0.



2012-13 GUSTAVUS ADOLPHUS WOMEN'S HOCKEY GAME NOTES

THE LAST TIME IT HAPPENED...

PENALTIES

Not penalized

GAC: Dec. 1, 2012 at Augsburg.
GAC won 3-1.

OPP: Dec. 2, 2000 at St.
Catherine. St. Kate's won 4-3.

Neither team was penalized

Jan. 30, 1998 at Saint Mary's.
Gusties won 6-2.

HAT TRICKS

Last individual 3-goal game

GAC: Jan. 26, 2013 vs. Concordia.
Lindsey Hjelm scored three goals
(all even) in a 5-1 Gustavus win in
St. Peter.

OPP: March 18, 2011 vs.
Norwich (NCAA Semifinals). Julie
Fortier scored the first three goals
of the game in a 5-4 Norwich
victory.

Last individual 4-goal game

GAC: Dec. 2, 2011 at Augsburg. Allie
Schwab scored three PP goals and
an even goal in a 9-0 shutout.
OPP: Never.

All goals scored by one player

GAC: Never.
OPP: Dec. 2, 2006 at Hamline.
Melanie Levielle scored all three
goals in a 4-3 loss.

SHOTS ON GOAL

Fewer than 15 shots in a game

GAC: Dec. 3, 1998 at the
University of Minnesota, 11 shots.
Minnesota won 8-1.
OPP: Feb. 2, 2013 vs. Hamline, 8 shots.
Gustavus won 2-0.

Fewer than 20 shots in a game

GAC: Dec. 14, 2012 vs. UW-River Falls,
19 shots in GAC 3-2 win.
OPP: Feb. 2, 2013 vs. Hamline, 8 shots.
Gustavus won 2-0.

40 or more shots in a game

GAC: Feb. 2, 2013 at Hamline: 54 shots.
Gustavus won 2-0.
OPP: Dec. 10, 2010 at UW-River Falls,
40 shots. River Falls won 4-2.

50 or more shots in a game

GAC: Feb. 16, 2013 vs. St. Olaf, 51 shots.
Gustavus won 6-2.
OPP: Nov. 23, 1998 vs. the
University of Minnesota: 51 shots.
Minnesota won 6-0.

60 or more shots in a game

GAC: Feb. 15, 2013 at St. Olaf, 61 shots.
Gustavus won 7-4.
OPP: Feb. 5, 1998 at Boston
College, 65 shots. BC won 10-1.

SINGLE GAME POINTS

Player had four points in a game

GAC: Feb. 9, 2013 vs. Saint Mary's.
Lindsey Hjelm scored two goals and
two assists in a 6-1 Gustavus victory.
OPP: Mar. 18, 2011 vs. Norwich (NCAA
Semifinals). Julie Fortier scored three
goals with an assist in a 5-4 Norwich
victory.

Player had five points in a game

GAC: Dec. 2, 2011 at Augsburg. Allie
Schwab scored three PP goals and
an even goal with an assist in a 9-0
shutout.
OPP: Mar. 18, 2005 vs.
Middlebury. (NCAA Semifinals) Lorna
Grifis scored two goals with three
assists in a 7-3
Middlebury win.

Player had six or more points in a game

GAC: Feb. 11, 2005 at St.
Catherine. Andrea Peterson scored
two goals with six assists in a 13-0 win.
(Most individual points in a game in
program history)
OPP: Jan. 30, 1999 at
Middlebury. Michelle Labbe scored
three goals with three
assists in a 8-0 Middlebury win.





2012-13 GUSTAVUS ADOLPHUS WOMEN'S HOCKEY GAME NOTES

HEAD COACH MIKE CARROLL

14th Season
309-68-23 at Gustavus
Office: 507-933-6297
Email: mcarroll@gustavus.edu

Mike Carroll is entering his 14th season as the women's head hockey coach at Gustavus. Within his tenure behind the Gustie bench, Carroll has turned Gustavus women's hockey into one of the most successful programs in NCAA Division III women's hockey. He has compiled an overall record of 287-68-22 in 13 seasons and has the most coaching victories in the history of the program.



Last season Carroll directed the Gusties to a record of 24-4-2 overall and a first place finish in the MIAC with a conference record of 16-1-1. The Gusties won the MIAC Championship for the eighth consecutive season and were also the MIAC Playoff Champions for the ninth straight year. The Gusties advanced to the NCAA National Tournament for the 10th time in 12 years, falling to Norwich University 4-3 in the semifinals before dropping its third place game to Plattsburgh State by the score of 4-3.



Carroll has directed the Gusties to 10 MIAC regular season titles (2000-01, 2001-02, 2004-05, 2005-06, 2006-07, 2007-08, 2008-09, 2009-10, 2010-11, 2011-12) and has been named the MIAC Coach of the Year five times (2001-02, 2003-04, 2004-05, 2005-06, 2010-11). In addition to coaching 27 players who have earned All-Conference honors 51 times, he has coached four MIAC Players-of-the-Year in Sarah Garrison, Andrea Peterson, Stefanie Ubl, and Allie Schwab. Carroll has worked with 12 players who have earned AHCA All-America distinction 17 times and two American Hockey Coaches Association Players-of-the-Year, including four-time MIAC Player-of-the-Year and four-time All-American Andrea Peterson.

Prior to coming to Gustavus, Carroll served as the head boys' hockey coach at Mankato West High School from 1991 to 1999. Carroll's college coaching

resume included a stint as head men's hockey coach at Fergus Falls Community College from 1986 to 1987 as well as a season as the assistant men's coach at the University of St. Thomas in 1983.

Carroll, an Edina, Minnesota native, competed in hockey and baseball at Mankato State. After graduating with a degree in municipal recreation in 1982, Carroll played professional baseball in the Montreal Expos organization for two years.

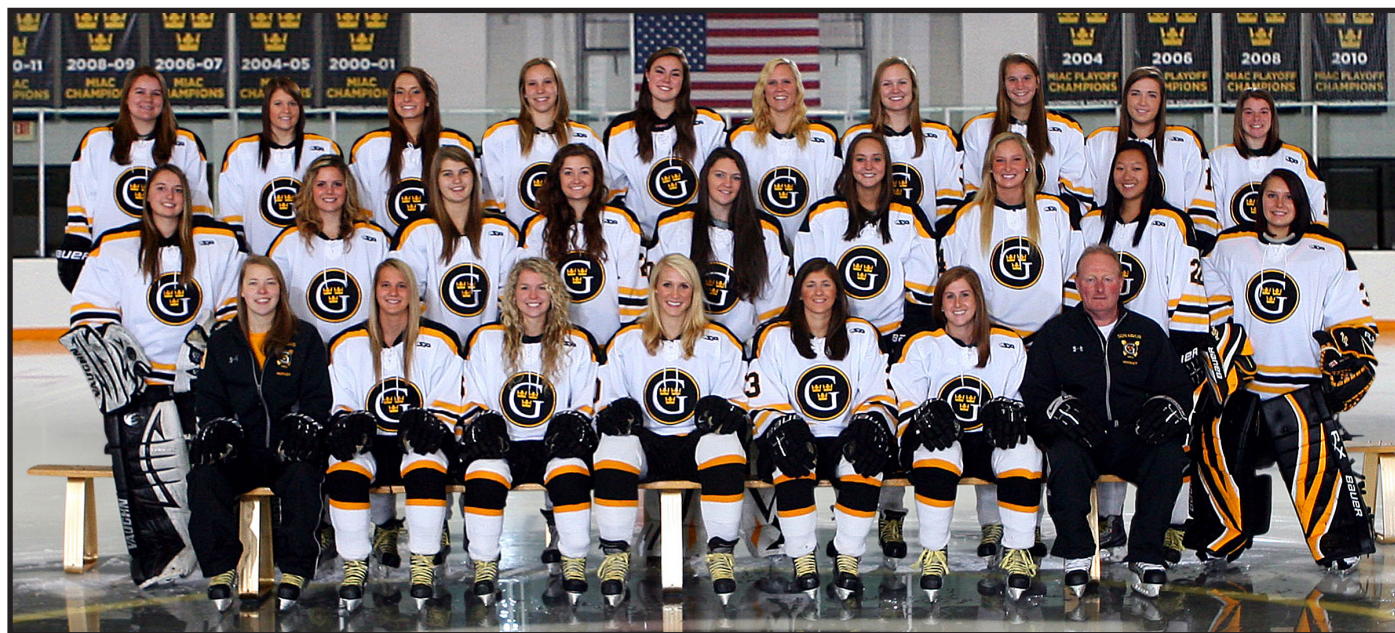
In addition to his hockey coaching duties at Gustavus, Carroll is also the head coach of the Golden Gustie baseball team. Mike and his wife, Terri, live in Mankato and have two sons, Matt and Mike.

Carroll At Gustavus			
Year	Overall	MIAC	Conference Finish
1999-00	18-10-1	12-5-1	3rd
2000-01	23-6-1	16-2-0	1st
2001-02	23-5-2	18-0-1	1st
2002-03	14-9-4	11-4-3	3rd
2003-04	22-6-0	16-2-0	2nd
2004-05	25-4-1	17-1-0	1st
2005-06	22-5-2	17-0-1	1st
2006-07	25-3-0	17-1-0	1st
2007-08	25-3-0	18-0-0	1st
2008-09	22-2-4	16-0-2	1st
2009-10	26-6-2	14-3-1	1st
2010-11	22-5-3	14-2-2	1st
2011-12	24-4-2	16-1-1	1st
2012-13	22-0-1	16-0-0	1st
Totals	309-68-23	218-21-12	11 MIAC Titles



2012-13 GUSTAVUS ADOLPHUS WOMEN'S HOCKEY GAME NOTES

2012-13 GUSTAVUS WOMEN'S HOCKEY ROSTER/PRONUNCIATION GUIDE



<u>NO.</u>	<u>NAME</u>	<u>YR</u>	<u>POS</u>	<u>HGT</u>	<u>HOMETOWN</u>	<u>HIGH SCHOOL</u>
1	Lindsey Hibbard	Fr.	G	5-6	Princeton, Minn.	Princeton
2	Meagan Wanecke (WAHN-eck-ee)	Sr.	F	5-4	Delafield, Wis.	Kettle Moraine
3	Emily Reibert (RYE-bert)	Fr.	F	5-5	Inver Grove Heights, Minn.	South Saint Paul
4	Maddie Bergh (BERG)	Jr.	D	5-4	Eden Prairie, Minn.	Benilde St. Margaret's
5	Jenna Christensen*	Sr.	F	5-6	Albert Lea, Minn.	Albert Lea
7	Beth Olson	So.	D	5-9	Warroad, Minn.	Warroad
8	Allison Eder-Zdechlik (EEDER-zedlick)	Fr.	F	5-4	Stillwater, Minn.	Stillwater
9	Amanda Cartony (Car-TONY)	Jr.	F	5-7	Stillwater, Minn.	Stillwater
10	Courtney Boucher (Boo-SHAY)	So.	F	5-7	Hastings, Minn.	Hastings
11	Keri Pickel (Pickle)	Jr.	F	5-2	Rochester, Minn.	Mayo
12	Taylor Skelton	So.	F	5-7	Ely, Minn.	Ely
14	Melissa Doyle	Jr.	F	5-0	White Bear Lake, Minn.	Hill-Murray
15	Leah Johnson	So.	F	5-4	Chanhassen, Minn.	Chaska
16	Kelsey Kennedy	Sr.	D	5-3	Eagan, Minn.	Eagan
17	Lindsey Hjelm* (YELM)	Sr.	D	5-9	North Oaks, Minn.	Mounds View
18	Carolyn Draayer (DRAY-er)	So.	F	5-6	Deephaven, Minn.	Minnetonka
19	Kelly Thotland	So.	D	5-3	Edina, Minn.	Edina
21	Brianna Seebold	Fr.	F	5-7	Detroit Lakes, Minn.	Detroit Lakes
22	Marissa Brandt	So.	F/D	5-6	Vadnais Heights, Minn.	Hill-Murray
23	Kayla Ingbreton	Sr.	F	5-4	Mound, Minn.	Mound-Westonka
24	Heidi Korin (KOE-rin)	So.	D	5-8	Corcoran, Minn.	Wayzata
30	Colleen Jacoby (Ja-KOBE-ee)	Fr.	G	5-7	Muskegon, Mich.	Cranbrook Kingswood
33	Tara Hoverstad	Fr.	G	5-3	Coon Rapids, Minn.	Blaine

HEAD COACH: Mike Carroll (14th Season)

ASSISTANT COACH: Kirstin Peterson, Steve Carroll

*: Denotes Captain



PLAYER PROFILES



Lindsey's Profile

Number: 1

Year: First-year

Position: Goaltender

Hometown: Princeton, Minn.

High School: Princeton

Major: Undeclared

1 LINDSEY HIBBARD

2012-13 Stats					
GP	Min.	GA	GAA	Saves	Sho
15	717:18	17	1.42	202	1

Career Stats						
Year	GP	Min.	GA	GAA	Saves	Sho
2012-13	15	717:18	17	1.42	202	1
Totals	15	717:18	17	1.42	202	1



2 MEAGAN WANECKE

2012-13 Stats					
GP	G	A	Pts.	Shots	+/-
23	11	9	20	90	+19

Career Stats						
Year	GP	G	A	Pts.	Shots	+/-
2009-10	30	11	11	22	95	+23
2010-11	29	7	4	11	81	+4
2011-12	30	8	9	17	86	+9
2012-13	23	11	9	20	90	+19
Totals	112	37	33	70	352	+52



Meagan's Profile

Number: 2

Year: Senior

Position: Forward

Hometown: Delafield, Wis.

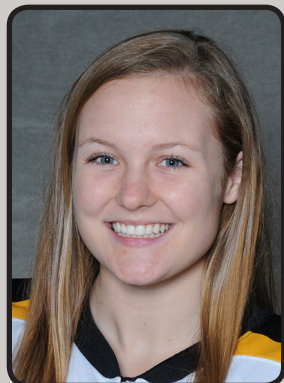
High School: Kettle Moraine

Major: Sociology and Anthropology
Management





PLAYER PROFILES



Emily's Profile

Number: 3

Year: First-year

Position: Forward

Hometown: Inver Grove Heights, Minn.

High School: South St. Paul

Major: Undecided

3 EMILY REIBERT

2012-13 Stats					
GP	G	A	Pts.	Shots	+/-
23	3	3	6	35	+4

Career Stats						
Year	GP	G	A	Pts.	Shots	+/-
2012-13	23	3	3	6	35	+4
Totals	23	3	3	6	35	+4



4 MADDIE BERGH

2012-13 Stats					
GP	G	A	Pts.	Shots	+/-
22	0	4	4	27	+14

Career Stats						
Year	GP	G	A	Pts.	Shots	+/-
2010-11	28	3	3	6	49	+11
2011-12	30	0	14	14	66	+16
2012-13	22	0	4	4	27	+14
Totals	81	3	21	24	142	+41



Maddie's Profile

Number: 4

Year: Junior

Position: Defense

Hometown: Eden Prairie, Minn.

High School: Benilde St. Margaret's

Major: Public Accounting





PLAYER PROFILES



Jenna's Profile

Number: 5
Year: Senior
Position: Forward
Hometown: Albert Lea, Minn.
High School: Albert Lea
Major: Management

5 JENNA CHRISTENSEN

2012-13 Stats					
GP	G	A	Pts.	Shots	+/-
23	5	9	14	61	+17

Career Stats						
Year	GP	G	A	Pts.	Shots	+/-
2009-10	29	0	0	0	15	+4
2010-11	27	8	3	11	45	+7
2011-12	30	7	6	13	66	+19
2012-13	23	5	9	14	61	+17
Totals	109	20	18	38	187	+47



7 BETH OLSON

2012-13 Stats					
GP	G	A	Pts.	Shots	+/-
18	0	2	2	20	+9

Career Stats						
Year	GP	G	A	Pts.	Shots	+/-
2011-12	10	0	1	1	4	-1
2012-13	18	0	2	2	20	+9
Totals	28	0	3	3	24	+8



Beth's Profile

Number: 7
Year: Sophomore
Position: Defense
Hometown: Warroad, Minn.
High School: Warroad
Major: Undeclared





PLAYER PROFILES



Allison's Profile

Number: 8

Year: First-year

Position: Forward

Hometown: Stillwater, Minn.

High School: Stillwater

Major: Undeclared

8 ALLISON EDER-ZDECHLIK

2012-13 Stats					
GP	G	A	Pts.	Shots	+/-
23	11	10	21	73	+18

Career Stats						
Year	GP	G	A	Pts.	Shots	+/-
2012-13	23	11	10	21	73	+18
Totals	23	11	10	21	73	+18



9 AMANDA CARTONY

2012-13 Stats					
GP	G	A	Pts.	Shots	+/-
22	1	5	6	38	+9

Career Stats						
Year	GP	G	A	Pts.	Shots	+/-
2010-11	28	13	8	21	65	+17
2011-12	28	14	16	30	69	+17
2012-13	22	1	5	6	38	+9
Totals	78	28	30	57	172	+43



Amanda's Profile

Number: 9

Year: Junior

Position: Forward

Hometown: Stillwater, Minn.

High School: Stillwater

Major: Sociology and Anthropology





PLAYER PROFILES



Courtney's Profile

Number: 10

Year: Sophomore

Position: Forward

Hometown: Hastings, Minn.

High School: Hastings

Major: Undeclared

10 COURTNEY BOUCHER

2012-13 Stats					
GP	G	A	Pts.	Shots	+/-
23	5	3	8	60	+7

Career Stats						
Year	GP	G	A	Pts.	Shots	+/-
2011-12	30	7	10	17	96	+7
2012-13	23	5	3	8	60	+7
Totals	53	12	13	25	156	+14



11 KERI PICKEL

2012-13 Stats					
GP	G	A	Pts.	Shots	+/-
23	1	2	3	26	+5

Career Stats						
Year	GP	G	A	Pts.	Shots	+/-
2012-13	23	1	2	3	26	+5
Totals	23	1	2	3	26	+5



Keri's Profile

Number: 11

Year: Junior

Position: Forward

Hometown: Rochester, Minn.

High School: Mayo

Major: Public Accounting





PLAYER PROFILES



Taylor's Profile

Number: 12

Year: Sophomore

Position: Forward

Hometown: Ely, Minn.

High School: Ely

Major: Undeclared

12 TAYLOR SKELTON

2012-13 Stats

GP	G	A	Pts.	Shots	+/-
7	0	0	0	2	+1

Career Stats

Year	GP	G	A	Pts.	Shots	+/-
2011-12	9	0	1	1	8	+1
2012-13	7	0	0	0	2	+1
Totals	16	0	1	1	10	+2





PLAYER PROFILES



Melissa's Profile

Number: 14

Year: Junior

Position: Forward

Hometown: White Bear Lake, Minn.

High School: Hill-Murray

Major: Biology

14 MELISSA DOYLE

2012-13 Stats

GP	G	A	Pts.	Shots	+/-
23	8	3	11	68	+18

Career Stats

Year	GP	G	A	Pts.	Shots	+/-
2010-11	27	8	8	16	76	+4
2011-12	30	5	3	8	45	+11
2012-13	23	8	3	11	68	+18
Totals	80	21	14	35	185	+33



Leah's Profile

Number: 15

Year: Sophomore

Position: Forward

Hometown: Chanhassen, Minn.

High School: Chaska

Major: Elementary Education

15 LEAH JOHNSON

2012-13 Stats

GP	G	A	Pts.	Shots	+/-
23	2	4	6	42	+1

Career Stats

Year	GP	G	A	Pts.	Shots	+/-
2011-12	16	4	1	5	27	+2
2012-13	23	2	4	6	42	+1
Totals	39	6	5	11	69	+3





PLAYER PROFILES



Kelsey's Profile

Number: 16
Year: Senior
Position: Defense
Hometown: Eagan, Minn.
High School: Eagan
Major: International Management

16 KELSEY KENNEDY

2012-13 Stats					
GP	G	A	Pts.	Shots	+/-
23	1	5	6	52	+16

Career Stats						
Year	GP	G	A	Pts.	Shots	+/-
2009-10	30	2	8	10	66	+10
2010-11	27	0	9	9	43	+10
2011-12	30	1	22	23	50	+34
2012-13	23	1	5	6	52	+16
Totals	110	4	44	48	211	+70



17 LINDSEY HJELM

2012-13 Stats					
GP	G	A	Pts.	Shots	+/-
23	11	13	24	135	+24

Career Stats						
Year	GP	G	A	Pts.	Shots	+/-
2009-10	30	11	13	24	118	+15
2010-11	30	12	18	30	115	+12
2011-12	30	11	15	26	140	+28
2012-13	23	11	13	24	135	+24
Totals	113	45	59	104	492	+79



Lindsey's Profile

Number: 17
Year: Senior
Position: Defense
Hometown: North Oaks, Minn.
High School: Mounds View
Major: Biology





PLAYER PROFILES



Carolyn's Profile

Number: 18

Year: Sophomore

Position: Forward

Hometown: Deephaven, Minn.

High School: Minnetonka

Major: Communication Studies

18 CAROLYN DRAAYER

2012-13 Stats

GP	G	A	Pts.	Shots	+/-
21	10	6	16	98	+17

Career Stats

Year	GP	G	A	Pts.	Shots	+/-
2011-12	30	19	8	27	106	+11
2012-13	21	10	6	16	98	+17
Totals	51	29	13	43	204	+28



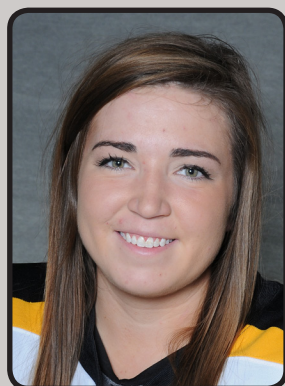
19 KELLY THOTLAND

2012-13 Stats

GP	G	A	Pts.	Shots	+/-
22	2	4	6	42	+14

Career Stats

Year	GP	G	A	Pts.	Shots	+/-
2011-12	30	5	8	13	63	+12
2012-13	22	2	4	6	42	+14
Totals	52	7	12	19	105	+26



Kelly's Profile

Number: 19

Year: Sophomore

Position: Defense

Hometown: Edina, Minn.

High School: Edina

Major: Communication Studies





PLAYER PROFILES



Brianna's Profile

Number: 21

Year: First-year

Position: Forward

Hometown: Detroit Lakes, Minn.

High School: Detroit Lakes

Major: Undeclared

21 BRIANNA SEEBOLD

2012-13 Stats					
GP	G	A	Pts.	Shots	+/-
23	5	4	9	34	+6

Career Stats						
Year	GP	G	A	Pts.	Shots	+/-
2012-13	23	5	4	9	34	+6
Totals	23	5	4	9	34	+6



Marissa's Profile

Number: 22

Year: Sophomore

Position: Forward/Defense

Hometown: Vadnais heights, Minn.

High School: Hill-Murray

Major: Undeclared

22 MARISSA BRANDT

2012-13 Stats					
GP	G	A	Pts.	Shots	+/-
22	1	6	7	16	+10

Career Stats						
Year	GP	G	A	Pts.	Shots	+/-
2011-12	29	5	6	11	23	+6
2012-13	22	1	6	7	16	+10
Totals	51	6	12	18	39	+16





PLAYER PROFILES



Kayla's Profile

Number: 23

Year: Senior

Position: Forward

Hometown: Mound, Minn.

High School: Mound-Westonka

Major: Health Fitness

23 KAYLA INGBRETSON

2012-13 Stats					
GP	G	A	Pts.	Shots	+/-
23	2	3	5	32	+8

Career Stats						
Year	GP	G	A	Pts.	Shots	+/-
2009-10	24	2	0	2	29	+5
2010-11	20	2	1	3	17	+4
2011-12	21	2	4	6	19	+7
2012-13	23	2	3	5	32	+8
Totals	88	8	8	16	97	+26



24 HEIDI KORIN

2012-13 Stats					
GP	G	A	Pts.	Shots	+/-
5	0	0	0	3	0

Career Stats						
Year	GP	G	A	Pts.	Shots	+/-
2011-12	3	0	0	0	3	+2
2012-13	5	0	0	0	3	0
Totals	8	0	0	0	6	+2



Heidi's Profile

Number: 24

Year: Sophomore

Position: Defense

Hometown: Corcoran, Minn.

High School: Wayzata

Major: Biology





PLAYER PROFILES



Colleen's Profile

Number: 30

Year: First-year

Position: Goaltender

Hometown: Muskegon, Mich.

High School: Cranbrook Kingswood

Major: Undeclared

30 COLLEEN JACOBY

2012-13 Stats					
GP	Min.	GA	GAA	Saves	Sho
6	247:31	4	0.97	90	1

	Career Stats					
Year	GP	Min.	GA	GAA	Saves	Sho
2012-13	6	247:31	4	0.97	90	1
Totals	6	247:31	4	0.97	90	1



Tara's Profile

Number: 33

Year: First-year

Position: Goaltender

Hometown: Coon Rapids, Minn.

High School: Blaine

Major: Undeclared

33 TARA HOVERSTAD

2012-13 Stats					
GP	Min.	GA	GAA	Saves	Sho
9	419:52	5	0.71	94	2

Career Stats						
Year	GP	Min.	GA	GAA	Saves	Sho
2012-13	9	419:52	5	0.71	94	2
Totals	9	419:52	5	0.71	94	2





2012-13 GUSTAVUS ADOLPHUS WOMEN'S HOCKEY GAME NOTES

2012-13 COMBINED STATISTICS

The Automated ScoreBook Gustavus Combined Team Statistics (as of Feb 21, 2013) All games

Date	Opponent	Score	Att.
Oct 30	UW-SUPERIOR	w 3-2	221
* Nov 09	#10 BETHEL UNIVERSITY	w 3-1	379
* Nov 10	at #10 Bethel University	w 2-0	213
* Nov 16	at Tommies	w 4-1	260
* Nov 17	#10 TOMMIES	w 1-0	181
* Nov 30	AUGSBURG	w 5-0	221
* 12/01/12	at Augsburg	w 3-1	88
Dec 08	BETHEL UNIVERSITY	w 3-1	151
12/12/2012	at #6 UW-River Falls	w 2-1	197
Dec 14	#6 UW-RIVER FALLS	w 3-2	0
Jan 11	UW-STEVENS POINT	w 7-3	331
Jan 12	UW-STEVENS POINT	w 1-0	458
* Jan 18	ST. CATHERINE	w 2-1	312
* Jan 19	at St. Catherine	w 3-1	125
* Jan 25	CONCORDIA COLLEGE	w 5-1	161
* Jan 26	CONCORDIA COLLEGE	w 4-1	211
* Feb 01	HAMLIN	w 3-1	113
* Feb 02	at Hamline	w 2-0	207
Feb 05	at UW-Superior	Tot 1-1	83
* Feb 08	SAINT MARY'S	w 3-1	169
* Feb 09	at Saint Mary's	w 6-1	68
* Feb 15	at St. Olaf College	w 7-4	175
* Feb 16	ST. OLAF COLLEGE	w 6-2	187

TEAM STATISTICS	GAC	OPP
SHOT STATISTICS		
Goals-Shot attempts	79-954	26-412
Shot pct.	.083	.063
Goals/Game	3.4	1.1
Shots/Game	41.5	17.9
POWER PLAYS		
Goals-Power Plays	17-88	8-66
Conversion Percent	.193	.121
Shot Attempts	183	88
Shot Percent	.093	.091
GOAL BREAKDOWN		
Power Play	17	8
Short-handed	2	2
Empty net	3	0
Penalty	0	0
Unassisted	16	5
Overtime	0	0
Shootout	0	0
Delayed Penalty	0	0
PENALTIES		
Number	75	95
Minutes	150	193
Penalties/Game	3.3	4.1
Pen minutes/Game	6.5	8.4
SHOOTOUTS (Made-Att)	0-0	0-0

Record:	Overall	Home	Away	Neutral
ALL GAMES	22-0-1	14-0-0	8-0-1	0-0-0
CONFERENCE	16-0-0	9-0-0	7-0-0	0-0-0
NON-CONFERENCE	6-0-1	5-0-0	1-0-1	0-0-0

#	Player	gp	g	a	pts	sh	sh%	pen-min	pp	sh
17	Lindsey Hjelm	23	11	13	24	135	.081	20-40	1	1
8	A. Eder-Zdechlik	23	11	10	21	73	.151	2-4	4	0
2	Meagan Wanecke	23	11	9	20	90	.122	4-8	1	0
18	Carolyn Draayer	21	10	6	16	98	.102	4-8	4	1
5	Jenna Christensen	23	5	9	14	61	.082	5-10	0	0
14	Melissa Doyle	23	8	3	11	68	.118	6-12	1	0
21	Brianna Seebold	23	5	4	9	34	.147	4-8	2	0
10	Courtney Boucher	23	5	3	8	60	.083	3-6	0	0
22	Marissa Brandt	22	1	6	7	16	.062	1-2	0	0
3	Emily Reibert	23	3	3	6	35	.086	5-10	0	0
15	Leah Johnson	23	2	4	6	42	.048	2-4	2	0
19	Kelly Thotland	22	2	4	6	42	.048	1-2	1	0
9	Amanda Cartony	22	1	5	6	38	.026	2-4	1	0
16	Kelsey Kennedy	23	1	5	6	52	.019	3-6	0	0
23	Kayla Ingbretson	23	2	3	5	32	.062	1-2	0	0
4	Maddie Bergh	22	0	4	4	27	.000	2-4	0	0
11	Keri Pickel	23	1	2	3	26	.038	1-2	0	0
7	Beth Olson	18	0	2	2	20	.000	4-8	0	0
24	Heidi Korin	5	0	0	0	3	.000	1-2	0	0
12	Taylor Skelton	7	0	0	0	2	.000	1-2	0	0
TM	TEAM	3	0	0	0	0	.000	3-6	0	0
	Total	23	79	95	174	954	.083	75-150	17	2
	Opponents	23	26	30	56	412	.063	95-193	8	2

#	Goalie	gp	min	ga	gaavg	saves	save%	w-l-t
33	Tara Hoverstad	9	419:52	5	0.71	94	.949	7-0-0
30	Colleen Jacoby	6	247:31	4	0.97	90	.957	4-0-0
1	Lindsey Hibbard	15	717:18	17	1.42	202	.922	11-0-1
TM	EMPTY NET	3	0:19	0	-	0	.000	0-0-0
	Total	23	1385:00	26	1.13	386	.937	22-0-1
	Opponents	23	1385:00	79	3.42	875	.917	0-22-1

Attendance Summary	GAC	Opponent
Total	3095	1416
Dates/Avg Per Date	14/221	9/157
Neutral Site #/Avg	0/0	

Goals by Period	1st	2nd	3rd	Total
Gustavus	29	26	24	79
Opponents	6	8	12	26

Saves by Period	1st	2nd	3rd	Total
Gustavus	106	133	146	386
Opponents	330	313	231	875



2012-13 GUSTAVUS ADOLPHUS WOMEN'S HOCKEY GAME NOTES

2012-13 TEAM STATISTICS

The Automated ScoreBook
Gustavus Overall Team Statistics (as of Feb 21, 2013)
All games

Overall: 22-0-1 Conf: 16-0-0 Home: 14-0-0 Away: 8-0-1 Neut: 0-0-0

TEAM STATISTICS	GAC	OPP
SHOT STATISTICS		
Goals-Shot attempts	79-954	26-412
Shot pct.	.083	.063
Goals/Game	3.4	1.1
Shots/Game	41.5	17.9
Assists	95	30
POWER PLAYS		
Goals-Power Plays	17-88	8-66
Conversion Percent	.193	.121
Shot Attempts	183	88
Shot Percent	.093	.091
GOAL BREAKDOWN		
Total Goals	79	26
Power Play	17	8
Short-handed	2	2
Empty net	3	0
Penalty	0	0
Unassisted	16	5
Overtime	0	0
Shootout	0	0
Delayed Penalty	0	0
PENALTIES		
Number	75	95
Minutes	150	193
Penalties/Game	3.3	4.1
Pen minutes/Game	6.5	8.4
Minor	75	94
Major	0	1
10-minute Misconduct	0	0
Game Misconduct	0	0
Gross Misconduct	0	0
Match	0	0
SHOOTOUTS (Made-Att)	0-0	0-0
ATTENDANCE		
Total	3095	1416
Dates/Avg Per Date	14/221	9/157
Neutral Site #/Avg	0/0	

Goals by Period	1st	2nd	3rd	OT	Total
Gustavus	29	26	24	0	79
Opponents	6	8	12	0	26

Saves by Period	1st	2nd	3rd	OT	Total
Gustavus	106	133	146	1	386
Opponents	330	313	231	1	875



2012-13 GUSTAVUS ADOLPHUS WOMEN'S HOCKEY GAME NOTES

2012-13 INDIVIDUAL STATISTICS

The Automated ScoreBook Gustavus Overall Individual Statistics (as of Feb 21, 2013) All games

Overall: 22-0-1 Conf: 16-0-0 Home: 14-0-0 Away: 8-0-1 Neut: 0-0-0

##	Player	gp	Shots					+-	Penalties				Goals									
			g	a	pts	sh	sh%		pen-min	min	maj	oth	pp	sh	fg	gw	gt	ot	ht	pn	ua	
17	Lindsey Hjelm	23	11	13	24	135	.081	+24	20-40	20	0	0	1	1	1	1	0	0	1	0	5	
8	A. Eder-Zdechlik	23	11	10	21	73	.151	+18	2-4	2	0	0	4	0	2	4	0	0	0	0	1	
2	Meagan Wanecke	23	11	9	20	90	.122	+19	4-8	4	0	0	1	0	3	4	0	0	0	0	1	
18	Carolyn Draayer	21	10	6	16	98	.102	+17	4-8	4	0	0	4	1	2	4	0	0	0	0	3	
5	Jenna Christensen	23	5	9	14	61	.082	+17	5-10	5	0	0	0	0	0	1	0	0	0	0	1	
14	Melissa Doyle	23	8	3	11	68	.118	+18	6-12	6	0	0	1	0	3	1	0	0	0	0	1	
21	Brianna Seebold	23	5	4	9	34	.147	+6	4-8	4	0	0	2	0	2	2	0	0	0	0	1	
10	Courtney Boucher	23	5	3	8	60	.083	+7	3-6	3	0	0	0	0	3	2	0	0	0	0	2	
22	Marissa Brandt	22	1	6	7	16	.062	+10	1-2	1	0	0	0	0	0	0	0	0	0	0	1	
3	Emily Reibert	23	3	3	6	35	.086	+4	5-10	5	0	0	0	0	0	2	0	0	0	0	0	
15	Leah Johnson	23	2	4	6	42	.048	+1	2-4	2	0	0	2	0	2	0	0	0	0	0	0	
19	Kelly Thotland	22	2	4	6	42	.048	+14	1-2	1	0	0	1	0	1	0	0	0	0	0	0	
9	Amanda Cartony	22	1	5	6	38	.026	+9	2-4	2	0	0	1	0	1	0	0	0	0	0	0	
16	Kelsey Kennedy	23	1	5	6	52	.019	+16	3-6	3	0	0	0	0	0	1	0	0	0	0	0	
23	Kayla Ingbretson	23	2	3	5	32	.062	+8	1-2	1	0	0	0	0	0	0	0	0	0	0	0	
4	Maddie Bergh	22	0	4	4	27	.000	+14	2-4	2	0	0	0	0	0	0	0	0	0	0	0	
11	Keri Pickel	23	1	2	3	26	.038	+5	1-2	1	0	0	0	0	1	0	0	0	0	0	0	
7	Beth Olson	18	0	2	2	20	.000	+9	4-8	4	0	0	0	0	0	0	0	0	0	0	0	
24	Heidi Korin	5	0	0	0	3	.000	0	1-2	1	0	0	0	0	0	0	0	0	0	0	0	
12	Taylor Skelton	7	0	0	0	2	.000	+1	1-2	1	0	0	0	0	0	0	0	0	0	0	0	
TM	TEAM	3	0	0	0	0	.000	0	3-6	3	0	0	0	0	0	0	0	0	0	0	0	
	Total	23	79	95	174	954	.083	+217	75-150	75	0	0	17	2	21	22	0	0	1	0	16	
	Opponents	23	26	30	56	412	.063	-	95-193	94	1	0	8	2	2	0	1	0	0	0	5	

##	Goalie	gp-gs	Goal average			Saves		Record				Goals allowed				
			minutes	ga	avg	saves	pct	w	l	t	sho	pp	sh	en	pen	sog
33	Tara Hoverstad	9-7	419:52	5	0.71	94	.949	7	0	0	2	0	0	0	0	0
30	Colleen Jacoby	6-3	247:31	4	0.97	90	.957	4	0	0	1	3	0	0	0	0
1	Lindsey Hibbard	15-13	717:18	17	1.42	202	.922	11	0	1	1	5	2	0	0	0
TM	EMPTY NET	3-0	0:19	0	-	0	.000	0	0	0	1	0	0	0	0	0
	Total	23-0	1385:00	26	1.13	386	.937	22	0	1	5	8	2	0	0	0
	Opponents	23-0	1385:00	79	3.42	875	.917	0	22	1	0	17	2	3	0	0



2012-13 GUSTAVUS ADOLPHUS WOMEN'S HOCKEY GAME NOTES

2012-13 CATEGORY LEADERS

The Automated ScoreBook Gustavus Category Leaders (as of Feb 21, 2013) All games

## Points	GP	G	A	Pts	Sh
17 Lindsey Hjelm	23	11	13	24	135
8 A. Eder-Zdechlik	23	11	10	21	73
2 Meagan Wanecke	23	11	9	20	90
18 Carolyn Draayer	21	10	6	16	98
5 Jenna Christensen	23	5	9	14	61
14 Melissa Doyle	23	8	3	11	68
21 Brianna Seebold	23	5	4	9	34
10 Courtney Boucher	23	5	3	8	60
22 Marissa Brandt	22	1	6	7	16
3 Emily Reibert	23	3	3	6	35

## Goals	GP	G	A	Pts	Sh
17 Lindsey Hjelm	23	11	13	24	135
8 A. Eder-Zdechlik	23	11	10	21	73
2 Meagan Wanecke	23	11	9	20	90
18 Carolyn Draayer	21	10	6	16	98
14 Melissa Doyle	23	8	3	11	68
5 Jenna Christensen	23	5	9	14	61
21 Brianna Seebold	23	5	4	9	34
10 Courtney Boucher	23	5	3	8	60
3 Emily Reibert	23	3	3	6	35
15 Leah Johnson	23	2	4	6	42

## Power-Play Goals	GP	PPG
8 A. Eder-Zdechlik	23	4
18 Carolyn Draayer	21	4
15 Leah Johnson	23	2
21 Brianna Seebold	23	2

## Short-Handed Goals	GP	SHG
17 Lindsey Hjelm	23	1
18 Carolyn Draayer	21	1

## Game-Winning Goals	GP	GWG
8 A. Eder-Zdechlik	23	4
18 Carolyn Draayer	21	4
2 Meagan Wanecke	23	4
21 Brianna Seebold	23	2
3 Emily Reibert	23	2
10 Courtney Boucher	23	2

## Plus/Minus	GP	+/-
17 Lindsey Hjelm	23	+24
2 Meagan Wanecke	23	+19
8 A. Eder-Zdechlik	23	+18
14 Melissa Doyle	23	+18
5 Jenna Christensen	23	+17
18 Carolyn Draayer	21	+17
16 Kelsey Kennedy	23	+16
4 Maddie Bergh	22	+14
19 Kelly Thotland	22	+14
22 Marissa Brandt	22	+10

## Assists	GP	G	A	Pts	Sh
17 Lindsey Hjelm	23	11	13	24	135
8 A. Eder-Zdechlik	23	11	10	21	73
2 Meagan Wanecke	23	11	9	20	90
5 Jenna Christensen	23	5	9	14	61
18 Carolyn Draayer	21	10	6	16	98
22 Marissa Brandt	22	1	6	7	16
9 Amanda Cartony	22	1	5	6	38
16 Kelsey Kennedy	23	1	5	6	52
21 Brianna Seebold	23	5	4	9	34
15 Leah Johnson	23	2	4	6	42

## Shots	GP	G	A	Pts	Sh	Sh%
17 Lindsey Hjelm	23	11	13	24	135	.081
18 Carolyn Draayer	21	10	6	16	98	.102
2 Meagan Wanecke	23	11	9	20	90	.122
8 A. Eder-Zdechlik	23	11	10	21	73	.151
14 Melissa Doyle	23	8	3	11	68	.118
5 Jenna Christensen	23	5	9	14	61	.082
10 Courtney Boucher	23	5	3	8	60	.083
16 Kelsey Kennedy	23	1	5	6	52	.019
15 Leah Johnson	23	2	4	6	42	.048
19 Kelly Thotland	22	2	4	6	42	.048

## Shot Pct.	GP	G	A	Pts	Sh	Sh%
8 A. Eder-Zdechlik	23	11	10	21	73	.151
21 Brianna Seebold	23	5	4	9	34	.147
2 Meagan Wanecke	23	11	9	20	90	.122
14 Melissa Doyle	23	8	3	11	68	.118
18 Carolyn Draayer	21	10	6	16	98	.102
3 Emily Reibert	23	3	3	6	35	.086
10 Courtney Boucher	23	5	3	8	60	.083
5 Jenna Christensen	23	5	9	14	61	.082
17 Lindsey Hjelm	23	11	13	24	135	.081
22 Marissa Brandt	22	1	6	7	16	.062

## Penalties	GP	Pen	Min
17 Lindsey Hjelm	23	20	40
14 Melissa Doyle	23	6	12
5 Jenna Christensen	23	5	10
3 Emily Reibert	23	5	10
18 Carolyn Draayer	21	4	8
7 Beth Olson	18	4	8
21 Brianna Seebold	23	4	8
2 Meagan Wanecke	23	4	8
10 Courtney Boucher	23	3	6
16 Kelsey Kennedy	23	3	6

## Penalty Minutes	GP	Pen	Min
17 Lindsey Hjelm	23	20	40
14 Melissa Doyle	23	6	12
5 Jenna Christensen	23	5	10
3 Emily Reibert	23	5	10
2 Meagan Wanecke	23	4	8
21 Brianna Seebold	23	4	8
18 Carolyn Draayer	21	4	8
7 Beth Olson	18	4	8
16 Kelsey Kennedy	23	3	6
10 Courtney Boucher	23	3	6