



2012-13 GUSTAVUS ADOLPHUS COLLEGE WOMEN'S HOCKEY GAME NOTES

2012 GUSTAVUS SCHEDULE

DATE OPPONENT TIME/RESULT

OCTOBER

30 UW-SUPERIOR W 3-2

NOVEMBER

9 BETHEL UNIVERSITY* W 3-1

10 Bethel University* W 2-0

16 University of St. Thomas* W 4-1

17 UNIVERSITY OF ST. THOMAS* W 1-0

30 AUGSBURG COLLEGE* W 5-0

DECEMBER

1 Augsburg College* W 3-1

8 BETHEL UNIVERSITY W 3-1

12 UW-River Falls W 2-1

14 UW-RIVER FALLS W 3-2

JANUARY

11 UW-STEVENS POINT W 7-3

12 US-STEVENS POINT W 1-0

18 ST. CATHERINE UNIVERSITY* W 2-1

19 St. Catherine University* W 3-1

25 CONCORDIA COLLEGE* 7:00 p.m.

26 CONCORDIA COLLEGE* 2:00 p.m.

FEBRUARY

1 HAMLINE UNIVERSITY* 7:00 p.m.

2 Hamline University* 2:00 p.m.

5 UW-Superior 7:00 p.m.

8 SAINT MARY'S UNIVERSITY* 7:00 p.m.

9 Saint Mary's University* 2:00 p.m.

15 St. Olaf College* 7:30 p.m.

16 ST. OLAF COLLEGE* 2:00 p.m.

22 College of Saint Benedict* 7:30 p.m.

23 COLLEGE OF SAINT BENEDICT* 2:00 p.m.

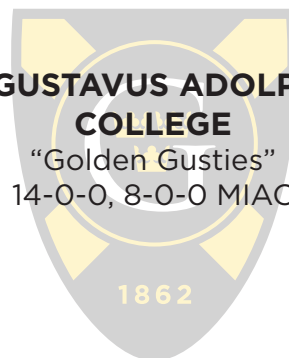
HOME GAMES in BOLD FACE CAPS

* Conference Game

Weekend Information

#2 GUSTAVUS ADOLPHUS COLLEGE

"Golden Gusties"
14-0-0, 8-0-0 MIAC



CONCORDIA COLLEGE

"Cobbers"
6-5-3, 5-2-1 MIAC



Game 15 - St. Peter, Minn.

DATE: Friday, January 25th, 2013

TIME: 7:00 p.m.

ARENA: Don Roberts Ice Rink

ADMISSION: \$5.00/Adult; \$4.00/Visiting college students with ID;
\$2.00/Age 12-18; Free under age 12 and over age 62

WEB VIDEO: <http://client.stretchinternet.com/client/gac.portal#>

LIVE STATS: <https://gustavus.edu/athletics/whky/LIVE/xlive.htm>

Game 16 - St. Peter, Minn.

DATE: Saturday, January 26th, 2013

TIME: 2:00 p.m.

ARENA: Don Roberts Ice Rink

ADMISSION: \$5.00/Adult; \$4.00/Visiting college students with ID;
\$2.00/Age 12-18; Free under age 12 and over age 62

WEB VIDEO: <http://client.stretchinternet.com/client/gac.portal#>

LIVE STATS: <https://gustavus.edu/athletics/whky/LIVE/xlive.htm>

Gustie Athletics Social Media

twitter

@gustieathletics

facebook

facebook.com/GustieAthletics

You Tube

youtube.com/gustavusathletics

flickr

flickr.com/photos/gogusties

GameCentral

client.stretchinternet.com/client/gac.portal

11-TIME MIAC CHAMPION



2012-13 GUSTAVUS ADOLPHUS WOMEN'S HOCKEY GAME NOTES

GUSTAVUS QUICK FACTS

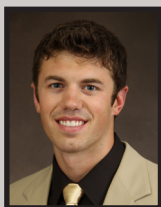
Location:	St. Peter, Minnesota
Address:	800 West College Ave. St. Peter, MN 56082
Founded:	1862
Enrollment:	2,572
Nickname:	Golden Gusties
School Colors:	Black and Gold
Home Rink:	Don Roberts Ice Rink
NCAA Affiliation:	NCAA Division III
Conference:	Minnesota Intercollegiate Athletic
NCAA Affiliation:	NCAA Division III
President:	Jack R. Ohle
Athletic Director:	Tom Brown
Assistant Athletic Director:	Jared Phillips
Athletic Trainer:	Troy Banse
Equipment Manager:	Wayne Norman

GUSTAVUS HOCKEY FACTS

2011-12 Record:	24-4-2
2011-12 MIAC Record/Finish:	16-1-1/First
All-Time Record:	336-87-23
All-Time MIAC Record:	218-23-12
MIAC Championships :	11
Letterwinners Returning/Lost:	17/9
All-MIAC Honorees Returning/Lost:	2/2

MEDIA CONTACTS

Primary Contact:



Tyler Grey
Sports Information Graduate Assistant
Email: tgrey@gustavus.edu
Office: 507-933-8411
Cell: 320-226-2083
Fax: 507-933-8412

Secondary Contact:



Ethan Armstrong
Sports Information Director
Email: earmstr2@gustavus.edu
Office: 507-933-7647
Cell: 320-815-2351
Fax: 507-933-8412

WOMEN'S HOCKEY RECORDS

All-Time Team Season Records

Most wins: 25; 04-05, 06-07, 07-08
Fewest wins: 14; 02-03
Most losses: 12; 97-98
Fewest losses: 3; 06-07, 07-08
Most shutouts: 13; 04-05, 08-09
Most goals: 172; 99-00
Most assists: 220; 00-01
Most points: 386; 00-01
Lowest GAA: 0.74; 08-09

All-Time Individual Game Records

Most goals: 6; Sarah Moe vs. Bethel (2/3/01)
Most assists: 6; Andrea Peterson vs. St. Catherine (2/11/05)
Most points: 8; Andrea Peterson vs. St. Catherine (2/11/05)
Fastest goal: 0:08; Noelle Skalko vs. Saint Mary's (2/27/98)

All-Time Individual Season Records

Most goals: 32; Andrea Peterson (04-05)
Most assists: 40; Noelle Skalko (97-98)
Most points: 68; Noelle Skalko (97-98)
Most penalties: 31; Linnea Carlson (99-00), Lindsey Hjelm (10-11)
Most penalty minutes: 62; Linnea Carlson (99-00), Lindsey Hjelm (10-11)
Lowest goals against average (6 game minimum): 0.69; Emily Klatt (08-09)
Most hat tricks: 4; Amy Black (97-98), Linnea Carlson (99-00), Sarah Moe (00-01)

All-Time Individual Career Records

Most goals: 80; Sarah Moe (98-99, 00-02)
Most assists: 107; Andrea Peterson (03-07)
Most points: 185; Andrea Peterson (03-07)

Goalie Records (min. 500 minutes)

Most minutes: 4273:56; Danielle Justice (08-12)
Goals against average: 0.95; Michelle Schaefer (00-01)
Saves: 1,094; Danielle Justice (08-12)
Save percentage: .936; Danielle Justice (08-12)
Wins: 55; Danielle Justice (08-12)



2012-13 GUSTAVUS ADOLPHUS WOMEN'S HOCKEY GAME NOTES

STATISTICAL COMPARISON

Gustavus		Concordia
3.00 (1st)	Goals For	2.07 (7th)
1.00 (1st)	Goals Against	2.07 (5th)
20.8 (3rd)	Power Play	18.9 (4th)
90.7 (2nd)	Penalty Kill	94.8 (1st)
53.8 (3rd)	Combined Special Teams	58.6 (2nd)
6.6 (8th)	Penalty Minutes	9.3 (2nd)

- 2012-13 Overall per game averages with MIAC rank

THE SERIES

Gustavus vs. Concordia

All-Time	27-1-2
Last Meeting	W 4-2-0 (3/3/12)
Current Streak	W1

Head Coach Mike Carroll

Record at Gustavus	301-68-22
vs. Concordia	27-1-2

Head Coach Brett Bruininks

Record at Concordia	30-14-9
vs. Gustavus	0-4-2

Last 10 Meetings	8-0-2
------------------	-------

Date	Location	Result
3/3/12*	St. Peter	W 4-2
1/28/12	Moorhead	T 3-3
1/27/12	Moorhead	W 4-1
3/3/11*	St. Peter	W 5-2
2/5/11	St. Peter	T 3-3
2/4/11	St. Peter	W 4-2
2/6/10	Moorhead	W 4-0
2/5/10	Moorhead	W 8-4
2/14/09	St. Peter	W 5-0
2/13/09	St. Peter	W 7-0

* - Denotes NCAA Playoff game

GAME NOTES

GUSTAVUS EMBARKS ON 16TH SEASON OF WOMEN'S HOCKEY...

The Gustavus women's hockey team is currently in its 16th season. Founded in 1997, the Gusties have attained an all-time record of 327-87-23, which stands second winningest program in all of NCAA Division III women's hockey. The Gustie women have won 11 Minnesota Intercollegiate Athletic Conference (MIAC) titles in the 14 years of women's hockey in the conference. Those 11 titles rank first in front of St. Thomas, Augsburg, and Saint Mary's, who all have two championships apiece.

GUSTAVUS COACHING STAFF... Head Coach Mike Carroll has entered his 14th season at the helm of the women's hockey program. At Gustavus, Carroll has amassed an overall record of 292-68-22, and an MIAC mark of 206-21-4. Under Carroll's direction, the Gusties have won 10 regular season and playoff MIAC championships and have reached the NCAA Tournament 10 consecutive times. He has been named the MIAC Coach of the Year five seasons. A native of Edina, Minn., Carroll graduated from Mankato State with a degree in municipal recreation in 1982 after participating in hockey and baseball in his time as a Maverick. Prior to coming to Gustavus, Carroll was the Mankato West High School boy's hockey coach from 1991 to 1999.

A former Gustavus women's hockey standout and three-time All-American, Kirstin Peterson '11 is in her second season as an assistant coach for the Three Crowns. While earning All-Conference honors in all four seasons, Peterson racked up 75 career points (16G, 59A), which ranks third all-time among Gustavus defenders. Following her graduation with a degree in health fitness in 2011, Peterson also worked as the director of club sports at Gustavus Adolphus.

Now in his 12th season as an assistant coach for the Gustie women, Steve Carroll will look to bring along a trio of first-year goalies. Carroll brings over 25 years of experience working with goalies, and is regarded as one of the top goalie instructors in the midwest. A native of Edina, Minn., Steve has his own goalie school and each year coaches hundreds of boys and girls of all skill levels.

GEOGRAPHY LESSON... The 2012-13 Gustavus women's hockey roster features 24 players that reside in four different states. With 21 players from Minnesota, just three players make their home in states across the boarder. The three Gusties who are not Minnesota natives include Meagan Wanecke from Delafield, Wis., Emily Raber from Buena Park, Calif., and Colleen Jacoby from Muskegon, Mich.

CALLING ALL CAPTAINS... In the 16-year history of the program, 30 women's hockey players have earned the honor of being a captain. This year's captains, Jenna Christensen and Lindsey Hjelm, take the reigns after serving as assistant captains last season. They are just the second tandem to serve back-to-back seasons as captains together. The only other twosome to do so was Mollie Carroll '12 and Kirstin Peterson '11 who served together in the 2009-10 and 2010-11 seasons.



2012-13 GUSTAVUS ADOLPHUS WOMEN'S HOCKEY GAME NOTES

GUSTAVUS' 2012-13 RECORD WHEN...

At home	9-0-0
On the road	5-0-0
Neutral Site	0-0-0
vs. MIAC	8-0-0
vs. Non-conference	6-0-0
vs. Top 10	7-0-0
GAC scores 4 or more goals	3-0-0
GAC scores 3 goals	6-0-0
GAC scores 2 or fewer goals	5-0-0
GAC scores first	13-0-0
Opponent scores first	1-0-0
GAC leads after 1st period	9-0-0
Opponent leads after 1st period	1-0-0
Tied after 1st period	4-0-0
GAC leads after 2nd period	10-0-0
Opponent leads after 2nd period	0-0-0
Tied after 2nd period	4-0-0
In overtime	0-0-0
Games decided by one goal	6-0-0
Games decided by two goals	5-0-0
Games decided by three goals	1-0-0
Games decided by four or more	2-0-0
GAC scores on the power play	9-0-0
GAC scoreless on the power play	5-0-0
GAC scores two or more PP goals	0-0-0
GAC outshoots opponent	12-0-0
GAC outshot by opponent	2-0-0
Shots equal	0-0-0
Tuesday	1-0-0
Wednesday	1-0-0
Friday	6-0-0
Saturday	6-0-0
In October	1-0-0
In November	5-0-0
In December	4-0-0
In January	4-0-0
In February	0-0-0
Following a win	13-0-0
Following a loss	0-0-0
Following a tie	0-0-0
Night games	9-0-0
Day games	5-0-0

GAME NOTES

LAST WEEKEND... Gustavus is coming off a sweep of MIAC opponent St. Catherine last weekend. The Gusties defeated the Wildcats 2-1 on Friday night at Don Roberts Ice Rink before traveling to Drake Arena in St. Paul for a 3-1 victory on Saturday afternoon.

Gustavus got on the board early with a goal from Courtney Boucher (So., Hastings, Minn.). The sophomore fired a slap shot from the right point that trickled its way over the goal line to put the Gusties on top 1-0.

St. Catherine answered later in the opening period, but Gustavus found the game-winner midway through the third period when Jenna Christensen (Sr., Albert Lea, Minn.) deflected a Boucher shot into the back of the net to push the Gusties out to a 2-1 lead where it would stay for the remainder of the evening.

Saturday afternoon brought another tightly contested battle between the two squads. Again the Gusties got out to an early lead. Melissa Doyle (Jr., White Bear Lake, Minn.) scored 7:31 into the contest to give Gustavus a 1-0 lead.

St. Catherine tied things up early in the third period, but Allison Eder-Zdechlik (Fy., Stillwater, Minn.) put the Gusties back in front with a power play goal with 11:17 to play. Gustavus tacked on one more score with an empty-net goal from Christensen with :08 remaining to seal the win.

ABOUT THE COBBERS... Concordia enters this weekend's series second in the MIAC with a record of 6-5-3 overall and a mark of 5-2-1 in league play. It is coming off a sweep of Saint Benedict last weekend. The Cobbers shut out the Blazers on Friday night with a 4-0 win and won on Saturday by the score of 3-1.

It was all Concordia on Friday night. Jenna Westerham found the back of the net early in the first period to give the Cobbers the early 1-0 lead. Madison Gendreau and Kelsey Vandegrift each scored a goal in the second period to extend the lead to 3-0, and Bekah Wright put the finishing touches on the 4-0 victory with a goal in the third period.

Saturday saw the Cobbers out to another early lead. Gendreau put Concordia on top 1-0 7:30 into the contest with her second goal of the weekend. Anna Westmark extended the lead to 2-0 in the early going of the third period. Saint Benedict answered with a goal midway through the third to bring the score to 2-1, but Gendreau put the game out of reach with an empty-net goal in the last minute of the game for the 3-1 victory.

Offensively, the Cobbers are led by three players who have scored double-digit points this season. Breann Julius leads the charge with 12 points (7 G, 5 A), while Gendreau and Abby Taffe follow with 11 (5 G, 6 A) and 10 (4 G, 6 A), respectively. Madison Denny has registered the bulk of the minutes in net. Denny has tallied 587:55 on her way to a 5-4-1 record and a goals against average of 1.63.



2012-13 GUSTAVUS ADOLPHUS WOMEN'S HOCKEY GAME NOTES

2012-13 MIAC STANDINGS

SCHOOL	MIAC	POINTS	OVERALL
Gustavus	8-0	16	14-0
Concordia	5-2-1	11	6-5-3
St. Catherine	5-3	10	8-7
St. Thomas	5-3	10	6-4-1
Bethel	4-3-1	9	7-7-1
St. Olaf	4-3-1	9	8-5-2
Saint Benedict	2-5-1	5	4-5-3
Saint Mary's	2-6	4	4-9
Augsburg	1-6-1	3	5-9-1
Hamline	1-6-1	3	4-8-3

AROUND THE LEAGUE

Friday, Jan. 25

Augsburg @ Saint Mary's 7PM

Saturday, Jan. 26

Hamline @ Saint Benedict 2PM

St. Catherine @ Bethel 3PM

Saint Mary's @ Augsburg 7PM

St. Olaf @ St. Thomas 7:30PM

Sunday Jan. 27

St. Thomas @ St. Olaf 2PM

USCHO.COM DIII WOMEN'S POLL

No.	Team	Record	Points	Last Poll
1	Plattsburgh	16- 0-1	147	1
2	Gustavus Adolphus	14- 0-0	133	2
3	Elmira	15- 3-1	100	3
3	Norwich	12- 2-3	100	5
5	Middlebury	10- 2-2	99	4
6	Bowdoin	13- 2-1	78	7
7	Wisconsin-River Falls	10- 4-2	62	6
8	Manhattanville	10- 6-1	33	9
9	Wisconsin-Superior	9- 6-1	18	10
10	Adrian	14- 5-0	17	8

Read more: <http://www.uscho.com/rankings/d-iii-womens-poll/#ixzz2lvLo3Dkl>

GAME NOTES

CARROLL GETS 300TH WIN... Friday night's win over St. Catherine marked the 300th career victory for head coach Mike Carroll. Carroll becomes the second coach in the history of NCAA Division III women's hockey to reach the 300-win milestone. In the history of all divisions of women's collegiate hockey, Carroll becomes the eighth coach to ever win 300 games.

GUSTIES IN THE POLLS... The Gusties are ranked in the top ten for the tenth time this season according to the latest USCHO.com Division III women's hockey Poll. The last time Gustavus fell outside of the top ten was the week of Jan. 11th, 2010. This week is the seventh consecutive week the Gustie women have ranked in at No. 2.

TOP DOGS... For the second weekend in-a-row, the top two teams in the MIAC are battling it out in a weekend series. The Gusties post a perfect record of 8-0-0, while the Cobbers stand second with a record of 5-2-1 in league play. With a sweep this weekend, Concordia can cut Gustavus' five-point lead down to a single point.

STILL STANDING... The Gusties are one of two unbeaten teams in all of NCAA Division III women's hockey. Thanks to a 16-0-1 record for Plattsburgh, Gustavus stands alone as the only team in the nation with an unblemished record of 14-0-0. Plattsburgh and Gustavus rank No. 1 and No. 2, respectively, in this week's USCHO.com poll.

CHASING HISTORY... Off to a 14-0-0 start, Gustavus will look to match the longest unbeaten streak to begin a season this weekend against Concordia. The longest string of games without a loss occurred last year when the Gusties sprinted out to a 14-0-2 start before losing to UW-Superior by the final score of 5-1 on Jan. 31st.

THE LAST TIME THEY MET... In last season's series, the two squads squared off in Moorhead, where the Gusties came away with a win and a tie. Gustavus defeated Concordia on Friday, Jan. 27th by the final score of 4-1 before coming out even with the Cobbers on Saturday, Jan. 28th with a final of 3-3.

BY THE NUMBERS...

53 - The number of consecutive weeks the Gusties have been ranked in the USCHO.com top-ten. Gustavus' streak of being ranked in the top-ten was extended on Monday when it was named a top-ten team for the 53rd consecutive week.

16 - The longest unbeaten streak to begin a season in Gustavus women's hockey history. With a 14-0-0 start to this season, the Gusties have a chance to match the longest unbeaten streak to start a season, which was set last year at 16 games.

1.00 - The average number of goals Gustavus gives up per game. The Gusties allow an average of 1.00 goals given up per game, which leads the nation in Division III.



THE LAST TIME IT HAPPENED...

COMEBACKS

GAC won when trailing after two periods

Nov. 22, 2008 vs. St. Olaf. Gusties scored three in the third to win 4-2.

Opponent won when trailing after two periods

Feb. 18, 2012 at St. Olaf. Oles trailed 2-1 after two, but scored four goals in the third.

Overcame 1-goal deficit and won

GAC: Dec. 12, 2012 at UW-River Falls. UW-River Falls scored in the first period, but the Gusties answered with goals in the second and third to take the win 2-1.

OPP: Jan. 28, 2011 at St. Catherine. St. Kate's replied with two in the first for a 2-1 win.

Overcame 2-goal deficit and won

GAC: Nov. 17, 2006 vs. Concordia. GAC answered with a goal in the second and two in the third for a 3-2 victory.

OPP: Feb. 18, 2012 at St. Olaf. Oles trailed 2-1 after two, but scored four goals in the third.

Overcame a 3-goal deficit and won

GAC: March 1, 1998 vs. University of Minnesota Club. Gusties scored one in the second and three in the third to win 4-3.

OPP: Never

OVERTIME GAMES

Won overtime game

GAC: March 1, 2012 vs Bethel. Courtney Boucher scored 6:25 in to overtime to win 1-0 and advance to the MIAC Championship.
OPP: March 17, 2012 vs. Plattsburgh State (NCAA Third Place Game)

Tied overtime game

Jan. 28, 2012 at Concordia 3-3.

SERIES SWEEPS

Swept a 2-game regular season home and away series

GAC: Jan. 18-19, 2013 vs. St. Catherine. (2-1 in St. Peter, 3-1 in St. Paul).

OPP: Nov. 21-22, 2003 vs. St. Thomas. (3-1 at St. Paul, 4-2 at St. Peter).

Swept a 2-game regular season home series

GAC: Jan. 11-12, 2013 vs. UW-Stevens Point (7-3, 1-0).

OPP: Never

Swept a 2-game regular season away series

GAC: Jan. 6-7, 2012 at UW-Stevens Point. (6-0, 5-2)

OPP: Never. (MIAC Playoffs: March 10-11, 2000 at Augsburg. (4-1, 2-1)

SHUTOUTS

Last Shutout

GAC: Jan. 12, 2013 vs. UW-Stevens Point 1-0.

OPP: Dec. 3, 2010 at St. Thomas 1-0.

Last Shutout in St. Peter

GAC: Jan. 12, 2013 vs. UW-Stevens Point 1-0.

OPP: March 19, 2010 vs. Amherst 4-0. (NCAA Semifinals)

Last Road Shutout

GAC: Nov. 10, 2012 at Bethel 2-0.

OPP: Dec. 3, 2010 at St. Thomas 1-0.

Scoreless Ties (2 in program history)

Jan. 14, 2010 vs. Trinity (Conn.)

Feb. 17, 2009 at UW-Stevens Point

EXTRA ATTACKER GOALS

GAC: March 18, 2011 vs.

Norwich (NCAA Semifinals, Rochester, N.Y.). Jenna

Christensen scored in final minute of a 5-4 loss.

OPP: Jan. 9, 2005 at UW-River Falls.

Gusties won 6-4.

SHORTHANDED GOALS

Scored a shorthanded goal

GAC: Jan. 11, 2013 vs. UW-Stevens Point. Lindsey Hjelm scored on UWSP power play in GAC 7-3 win.

OPP: Nov. 19, 2011 at St.

Thomas. Christina Rozeske scored SH in second period. Gusties 3-2 win.

Scored two shorthanded goals

GAC: Nov. 22, 2008 at St. Olaf. Melissa Mackley scored two short-handed goals in the third period. Gusties won 4-2.

OPP: Never.

EMPTY NET GOALS

GAC: Jan. 19, 2013 at St. Catherine.

Jenna Christensen scored EN with :08 remaining. GAC won 3-1.

OPP: Feb. 18, 2012 at St. Olaf. Oles scored EN with :04 left in game. Oles won 5-2.

TEAM GOALS IN A PERIOD

Team scored 5 or more goals in a period

GAC: Jan. 21, 2011 at Saint Benedict. Gusties scored five goals in the third period and won 8-1.

OPP: Dec. 3, 1998 at the University of Minnesota (Mariucci Arena). Gophers scored five goals in the first period and won 8-1.

PENALTY SHOTS

Scored on a penalty shot

GAC: Never.

OPP: March 19, 2011 vs.

Middlebury (NCAA 3rd Place Game, Rochester, N.Y.). Penalty shot goal scored after Lindsey Hjelm checking penalty in the second period. Middlebury won 5-0.

PENALTIES

Not penalized

GAC: Dec. 1, 2012 at Augsburg. GAC won 3-1.

OPP: Dec. 2, 2000 at St.

Catherine. St. Kate's won 4-3.



THE LAST TIME IT HAPPENED...

Neither team was penalized
Jan. 30, 1998 at Saint Mary's.
Gusties won 6-2.

HAT TRICKS

Last individual 3-goal game

GAC: Feb. 17, 2012 vs
St. Olaf. Allie Schwab scored one
even goal and two PP goals in
Gusties 5-0 win.
OPP: March 18, 2011 vs.
Norwich (NCAA Semifinals). Julie
Fortier scored the first three goals
of the game in a 5-4 Norwich
victory.

Last individual 4-goal game

GAC: Dec. 2, 2011 at Augsburg. Allie
Schwab scored three PP goals and
an even goal in a 9-0 shutout.
OPP: Never.

All goals scored by one player

GAC: Never.
OPP: Dec. 2, 2006 at Hamline.
Melanie Levielle scored all three
goals in a 4-3 loss.

SHOTS ON GOAL

Fewer than 15 shots in a game

GAC: Dec. 3, 1998 at the
University of Minnesota, 11 shots.
Minnesota won 8-1.
OPP: Jan. 19, 2013 at St. Catherine,
13 shots. GAC won 3-1.

Fewer than 20 shots in a game

GAC: Dec. 14, 2012 vs. UW-River Falls,
19 shots in GAC 3-2 win.
OPP: Jan. 19, 2013 vs. St. Catherine, 13
shots. GAC won 3-1.

40 or more shots in a game

GAC: Jan. 19, 2013 vs. St. Catherine, 55
shots. GAC won 3-1.
OPP: Dec. 10, 2010 at UW-River Falls,
40 shots. River Falls won 4-2.

50 or more shots in a game

GAC: Jan. 19, 2013 vs. St. Catherine, 55
shots. GAC won 3-1.
OPP: Nov. 23, 1998 vs. the
University of Minnesota, 51 shots.
Minnesota won 6-0.

60 or more shots in a game

GAC: Feb. 4, 2012 vs. Hamline, 62
shots. GA 2-1 win.
OPP: Feb. 5, 1998 at Boston
College, 65 shots. BC won 10-1.

SINGLE GAME POINTS

Player had four points in a game

GAC: Nov. 30, 2012 vs. Augsburg.
Meagan Wanecke scored two goals
and two assists in 5-0 victory.
OPP: Mar. 18, 2011 vs. Norwich (NCAA
Semifinals). Julie Fortier scored three
goals with an assist in a 5-4 Norwich
victory.

Player had five points in a game

GAC: Dec. 2, 2011 at Augsburg. Allie
Schwab scored three PP goals and
an even goal with an assist in a 9-0
shutout.
OPP: Mar. 18, 2005 vs.
Middlebury. (NCAA Semifinals) Lorna
Grifis scored two goals with three
assists in a 7-3
Middlebury win.

Player had six or more points in a
game

GAC: Feb. 11, 2005 at St.
Catherine. Andrea Peterson scored
two goals with six assists in a 13-0 win.
(Most individual points in a game in
program
history)
OPP: Jan. 30, 1999 at
Middlebury. Michelle Labbe scored
three goals with three
assists in a 8-0 Middlebury win.





2012-13 GUSTAVUS ADOLPHUS WOMEN'S HOCKEY GAME NOTES

HEAD COACH MIKE CARROLL

14th Season
301-68-22 at Gustavus
Office: 507-933-6297
Email: mcarroll@gustavus.edu

Mike Carroll is entering his 14th season as the women's head hockey coach at Gustavus. Within his tenure behind the Gustie bench, Carroll has turned Gustavus women's hockey into one of the most successful programs in NCAA Division III women's hockey. He has compiled an overall record of 287-68-22 in 13 seasons and has the most coaching victories in the history of the program.



Last season Carroll directed the Gusties to a record of 24-4-2 overall and a first place finish in the MIAC with a conference record of 16-1-1. The Gusties won the MIAC Championship for the eighth consecutive season and were also the MIAC Playoff Champions for the ninth straight year. The Gusties advanced to the NCAA National Tournament for the 10th time in 12 years, falling to Norwich University 4-3 in the semifinals before dropping its third place game to Plattsburgh State by the score of 4-3.



Carroll has directed the Gusties to 10 MIAC regular season titles (2000-01, 2001-02, 2004-05, 2005-06, 2006-07, 2007-08, 2008-09, 2009-10, 2010-11, 2011-12) and has been named the MIAC Coach of the Year five times (2001-02, 2003-04, 2004-05, 2005-06, 2010-11). In addition to coaching 27 players who have earned All-Conference honors 51 times, he has coached four MIAC Players-of-the-Year in Sarah Garrison, Andrea Peterson, Stefanie Ubl, and Allie Schwab. Carroll has worked with 12 players who have earned AHCA All-America distinction 17 times and two American Hockey Coaches Association Players-of-the-Year, including four-time MIAC Player-of-the-Year and four-time All-American Andrea Peterson.

Prior to coming to Gustavus, Carroll served as the head boys' hockey coach at Mankato West High School from 1991 to 1999. Carroll's college coaching

resume included a stint as head men's hockey coach at Fergus Falls Community College from 1986 to 1987 as well as a season as the assistant men's coach at the University of St. Thomas in 1983.

Carroll, an Edina, Minnesota native, competed in hockey and baseball at Mankato State. After graduating with a degree in municipal recreation in 1982, Carroll played professional baseball in the Montreal Expos organization for two years.

In addition to his hockey coaching duties at Gustavus, Carroll is also the head coach of the Golden Gustie baseball team. Mike and his wife, Terri, live in Mankato and have two sons, Matt and Mike.

Carroll At Gustavus			
Year	Overall	MIAC	Conference Finish
1999-00	18-10-1	12-5-1	3rd
2000-01	23-6-1	16-2-0	1st
2001-02	23-5-2	18-0-1	1st
2002-03	14-9-4	11-4-3	3rd
2003-04	22-6-0	16-2-0	2nd
2004-05	25-4-1	17-1-0	1st
2005-06	22-5-2	17-0-1	1st
2006-07	25-3-0	17-1-0	1st
2007-08	25-3-0	18-0-0	1st
2008-09	22-2-4	16-0-2	1st
2009-10	26-6-2	14-3-1	1st
2010-11	22-5-3	14-2-2	1st
2011-12	24-4-2	16-1-1	1st
2012-13	14-0-0	8-0-0	
Totals	301-68-22	210-21-4	10 MIAC Titles



2012-13 GUSTAVUS ADOLPHUS WOMEN'S HOCKEY GAME NOTES

2012-13 GUSTAVUS WOMEN'S HOCKEY ROSTER

<u>NO.</u>	<u>NAME</u>	<u>YR</u>	<u>POS</u>	<u>HGT</u>	<u>HOMETOWN</u>	<u>HIGH SCHOOL</u>
1	Lindsey Hibbard (HIB-bard)	Fr.	G	5-6	Princeton, Minn.	Princeton
2	Meagan Wanecke (WAHN-eck-ee)	Sr.	F	5-4	Delafield, Wis.	Kettle Moraine
3	Emily Reibert (RYE-bert)	Fr.	F	5-5	Inver Grove Heights, Minn.	South Saint Paul
4	Maddie Bergh	Jr.	D	5-4	Eden Prairie, Minn.	Benilde St. Margaret's
5	Jenna Christensen*	Sr.	F	5-6	Albert Lea, Minn.	Albert Lea
7	Beth Olson	So.	D	5-9	Warroad, Minn.	Warroad
8	Allison Eder-Zdechlik (EEDER-zedlick)	Fr.	F	5-4	Stillwater, Minn.	Stillwater
9	Amanda Cartony (Car-TONY)	Jr.	F	5-7	Stillwater, Minn.	Stillwater
10	Courtney Boucher (Boo-SHAY)	So.	F	5-7	Hastings, Minn.	Hastings
11	Keri Pickel (Pickle)	Jr.	F	5-2	Rochester, Minn.	Mayo
12	Taylor Skelton	So.	F	5-7	Ely, Minn.	Ely
14	Melissa Doyle	Jr.	F	5-0	White Bear Lake, Minn.	Hill-Murray
15	Leah Johnson	So.	F	5-4	Chanhassen, Minn.	Chaska
16	Kelsey Kennedy	Sr.	D	5-3	Eagan, Minn.	Eagan
17	Lindsey Hjelm* (Healm)	Sr.	D	5-9	North Oaks, Minn.	Mounds View
18	Carolyn Draayer (DRAY-er)	So.	F	5-6	Deephaven, Minn.	Minnetonka
19	Kelly Thotland	So.	D	5-3	Edina, Minn.	Edina
21	Brianna Seebold	Fr.	F	5-7	Detroit Lakes, Minn.	Detroit Lakes
22	Marissa Brandt	So.	F/D	5-6	Vadnais Heights, Minn.	Hill-Murray
23	Kayla Ingbretson	Sr.	F	5-4	Mound, Minn.	Mound-Westonka
24	Heidi Korin (KOE-rin)	So.	D	5-8	Corcoran, Minn.	Wayzata
30	Colleen Jacoby (Ja-KOBEE)	Fr.	G	5-7	Muskegon, Mich.	Cranbrook Kingswood
33	Tara Hoverstad	Fr.	G	5-3	Coon Rapids, Minn.	Blaine

HEAD COACH: Mike Carroll (14th Season)

ASSISTANT COACH: Steve Carroll, Kirstin Peterson

*: Denotes Captain



PLAYER PROFILES



Lindsey's Profile

Number: 1

Year: First-year

Position: Goaltender

Hometown: Princeton, Minn.

High School: Princeton

Major: Undeclared

1 LINDSEY HIBBARD

2012-13 Stats					
GP	Min.	GA	GAA	Saves	Sho
10	419:49	9	1.29	120	1

Career Stats						
Year	GP	Min.	GA	GAA	Saves	Sho
2012-13	9	359:49	8	1.33	108	1
Totals	9	359:49	8	1.33	108	1



2 MEAGAN WANECKE

2012-13 Stats					
GP	G	A	Pts.	Shots	+/-
14	7	4	11	54	+9

Career Stats						
Year	GP	G	A	Pts.	Shots	+/-
2009-10	30	11	11	22	95	+23
2010-11	29	7	4	11	81	+4
2011-12	30	8	9	17	86	+9
2012-13	14	7	4	11	54	+9
Totals	103	33	28	61	316	+44



Meagan's Profile

Number: 2

Year: Senior

Position: Forward

Hometown: Delafield, Wis.

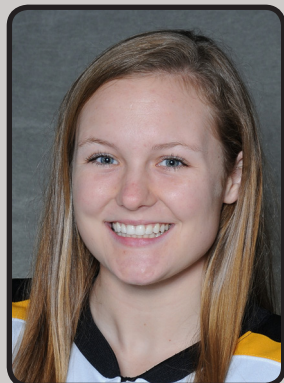
High School: Kettle Moraine

Major: Sociology and Anthropology
Management





PLAYER PROFILES



Emily's Profile

Number: 3

Year: First-year

Position: Forward

Hometown: Inver Grove Heights, Minn.

High School: South St. Paul

Major: Undecided

3 EMILY REIBERT

2012-13 Stats					
GP	G	A	Pts.	Shots	+/-
14	2	0	2	17	+5

Career Stats						
Year	GP	G	A	Pts.	Shots	+/-
2012-13	14	2	0	2	17	+5
Totals	14	2	0	2	17	+5



4 MADDIE BERGH

2012-13 Stats					
GP	G	A	Pts.	Shots	+/-
13	0	3	3	7	+3

Career Stats						
Year	GP	G	A	Pts.	Shots	+/-
2010-11	28	3	3	6	49	+11
2011-12	30	0	14	14	66	+16
2012-13	13	0	3	3	7	+3
Totals	71	3	20	23	122	+30



Maddie's Profile

Number: 4

Year: Junior

Position: Defense

Hometown: Eden Prairie, Minn.

High School: Benilde St. Margaret's

Major: Public Accounting





PLAYER PROFILES



Jenna's Profile

Number: 5

Year: Senior

Position: Forward

Hometown: Albert Lea, Minn.

High School: Albert Lea

Major: Management

5 JENNA CHRISTENSEN

2012-13 Stats					
GP	G	A	Pts.	Shots	+/-
14	3	6	9	28	+12

Career Stats						
Year	GP	G	A	Pts.	Shots	+/-
2009-10	29	0	0	0	15	+4
2010-11	27	8	3	11	45	+7
2011-12	30	7	6	13	66	+19
2012-13	14	3	6	9	28	+12
Totals	100	18	15	33	154	+42



7 BETH OLSON

2012-13 Stats					
GP	G	A	Pts.	Shots	+/-
10	0	1	1	14	+5

Career Stats						
Year	GP	G	A	Pts.	Shots	+/-
2011-12	10	0	1	1	4	-1
2012-13	10	0	1	1	14	+5
Totals	20	0	2	2	18	+4



Beth's Profile

Number: 7

Year: Sophomore

Position: Defense

Hometown: Warroad, Minn.

High School: Warroad

Major: Undeclared





PLAYER PROFILES



Allison's Profile

Number: 8

Year: First-year

Position: Forward

Hometown: Stillwater, Minn.

High School: Stillwater

Major: Undeclared

8 ALLISON EDER-ZDECHLIK

2012-13 Stats					
GP	G	A	Pts.	Shots	+/-
14	5	5	10	43	+6

Career Stats						
Year	GP	G	A	Pts.	Shots	+/-
2012-13	14	5	5	10	43	+6
Totals	14	5	5	10	43	+6



9 AMANDA CARTONY

2012-13 Stats					
GP	G	A	Pts.	Shots	+/-
13	1	2	3	27	+3

Career Stats						
Year	GP	G	A	Pts.	Shots	+/-
2010-11	28	13	8	21	65	+17
2011-12	28	14	16	30	69	+17
2012-13	13	1	2	3	27	+3
Totals	69	28	26	54	161	+37



Amanda's Profile

Number: 9

Year: Junior

Position: Forward

Hometown: Stillwater, Minn.

High School: Stillwater

Major: Sociology and Anthropology





PLAYER PROFILES



Courtney's Profile

Number: 10

Year: Sophomore

Position: Forward

Hometown: Hastings, Minn.

High School: Hastings

Major: Undeclared

10 COURTNEY BOUCHER

2012-13 Stats						
GP	G	A	Pts.	Shots	+/-	
14	3	1	4	34	+4	

Career Stats						
Year	GP	G	A	Pts.	Shots	+/-
2011-12	30	7	10	17	96	+7
2012-13	14	3	1	4	34	+4
Totals	44	10	11	21	130	+11



11 KERI PICKEL

2012-13 Stats						
GP	G	A	Pts.	Shots	+/-	
14	1	2	3	18	+2	

Career Stats						
Year	GP	G	A	Pts.	Shots	+/-
2012-13	14	1	2	3	18	+2
Totals	14	1	2	3	18	+2



Keri's Profile

Number: 11

Year: Junior

Position: Forward

Hometown: Rochester, Minn.

High School: Mayo

Major: Public Accounting





PLAYER PROFILES



Taylor's Profile

Number: 12

Year: Sophomore

Position: Forward

Hometown: Ely, Minn.

High School: Ely

Major: Undeclared

12 TAYLOR SKELTON

2012-13 Stats

GP	G	A	Pts.	Shots	+/-
5	0	0	0	1	+2

Career Stats

Year	GP	G	A	Pts.	Shots	+/-
2011-12	9	0	1	1	8	+1
2012-13	5	0	0	0	1	+2
Totals	14	0	1	1	9	+3





PLAYER PROFILES



Melissa's Profile

Number: 14

Year: Junior

Position: Forward

Hometown: White Bear Lake, Minn.

High School: Hill-Murray

Major: Biology

14 MELISSA DOYLE

2012-13 Stats

GP	G	A	Pts.	Shots	+/-
14	4	1	5	30	+10

Career Stats

Year	GP	G	A	Pts.	Shots	+/-
2010-11	27	8	8	16	76	+4
2011-12	30	5	3	8	45	+11
2012-13	14	4	1	5	30	+10
Totals	71	17	12	29	147	+25



Leah's Profile

Number: 15

Year: Sophomore

Position: Forward

Hometown: Chanhassen, Minn.

High School: Chaska

Major: Elementary Education

15 LEAH JOHNSON

2012-13 Stats

GP	G	A	Pts.	Shots	+/-
14	1	3	4	21	+1

Career Stats

Year	GP	G	A	Pts.	Shots	+/-
2011-12	16	4	1	5	27	+2
2012-13	14	1	3	4	21	+1
Totals	30	5	4	9	48	+3





PLAYER PROFILES



Kelsey's Profile

Number: 16
Year: Senior
Position: Defense
Hometown: Eagan, Minn.
High School: Eagan
Major: International Management

16 KELSEY KENNEDY

2012-13 Stats					
GP	G	A	Pts.	Shots	+/-
14	0	1	1	32	+4

Career Stats						
Year	GP	G	A	Pts.	Shots	+/-
2009-10	30	2	8	10	66	+10
2010-11	27	0	9	9	43	+10
2011-12	30	1	22	23	50	+34
2012-13	14	0	1	1	32	+4
Totals	99	3	40	43	195	+58



17 LINDSEY HJELM

2012-13 Stats					
GP	G	A	Pts.	Shots	+/-
14	3	7	10	80	+10

Career Stats						
Year	GP	G	A	Pts.	Shots	+/-
2009-10	30	11	13	24	118	+15
2010-11	30	12	18	30	115	+12
2011-12	30	11	15	26	140	+28
2012-13	14	3	7	10	80	+10
Totals	104	37	50	86	437	+65



Lindsey's Profile

Number: 17
Year: Senior
Position: Defense
Hometown: North Oaks, Minn.
High School: Mounds View
Major: Biology





PLAYER PROFILES



Carolyn's Profile

Number: 18

Year: Sophomore

Position: Forward

Hometown: Deephaven, Minn.

High School: Minnetonka

Major: Communication Studies

18 CAROLYN DRAAYER

2012-13 Stats						
GP	G	A	Pts.	Shots	+/-	
12	5	4	9	51	+8	

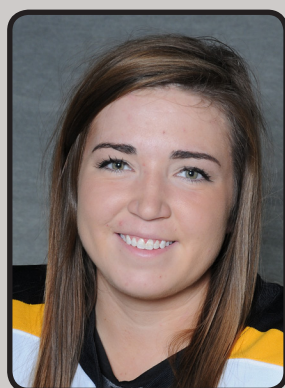
Career Stats						
Year	GP	G	A	Pts.	Shots	+/-
2011-12	30	19	8	27	106	+11
2012-13	12	5	4	9	51	+8
Totals	42	24	12	36	156	+19



19 KELLY THOTLAND

2012-13 Stats						
GP	G	A	Pts.	Shots	+/-	
13	1	2	3	20	+11	

Career Stats						
Year	GP	G	A	Pts.	Shots	+/-
2011-12	30	5	8	13	63	+12
2012-13	13	1	2	3	20	+11
Totals	43	6	10	16	83	+23



Kelly's Profile

Number: 19

Year: Sophomore

Position: Defense

Hometown: Edina, Minn.

High School: Edina

Major: Communication Studies





PLAYER PROFILES



Brianna's Profile

Number: 21

Year: First-year

Position: Forward

Hometown: Detroit Lakes, Minn.

High School: Detroit Lakes

Major: Undeclared

21 BRIANNA SEEBOLD

2012-13 Stats					
GP	G	A	Pts.	Shots	+/-
14	4	3	7	21	+5

Career Stats						
Year	GP	G	A	Pts.	Shots	+/-
2012-13	14	4	3	7	21	+5
Totals	14	4	3	7	21	+5



Marissa's Profile

Number: 22

Year: Sophomore

Position: Forward/Defense

Hometown: Vadnais heights, Minn.

High School: Hill-Murray

Major: Undeclared

22 MARISSA BRANDT

2012-13 Stats					
GP	G	A	Pts.	Shots	+/-
14	1	3	4	12	+7

Career Stats						
Year	GP	G	A	Pts.	Shots	+/-
2011-12	29	5	6	11	23	+6
2012-13	14	1	3	4	12	+7
Totals	43	6	9	15	35	+13





PLAYER PROFILES



Kayla's Profile

Number: 23

Year: Senior

Position: Forward

Hometown: Mound, Minn.

High School: Mound-Westonka

Major: Health Fitness

23 KAYLA INGBRETSON

2012-13 Stats					
GP	G	A	Pts.	Shots	+/-
14	1	2	3	14	+5

Career Stats						
Year	GP	G	A	Pts.	Shots	+/-
2009-10	24	2	0	2	29	+5
2010-11	20	2	1	3	17	+4
2011-12	21	2	4	6	19	+7
2012-13	14	1	2	3	14	+5
Totals	79	7	7	14	79	+23



24 HEIDI KORIN

2012-13 Stats					
GP	G	A	Pts.	Shots	+/-
4	0	0	0	3	0

Career Stats						
Year	GP	G	A	Pts.	Shots	+/-
2011-12	3	0	0	0	3	+2
2012-13	4	0	0	0	3	0
Totals	7	0	0	0	6	+2



Heidi's Profile

Number: 24

Year: Sophomore

Position: Defense

Hometown: Corcoran, Minn.

High School: Wayzata

Major: Biology





PLAYER PROFILES



Colleen's Profile

Number: 30

Year: First-year

Position: Goaltender

Hometown: Muskegon, Mich.

High School: Cranbrook Kingswood

Major: Undeclared

30 COLLEEN JACOBY

2012-13 Stats						
GP	Min.	GA	GAA	Saves	Sho	
4	180:00	2	0.67	67	1	

Career Stats						
Year	GP	Min.	GA	GAA	Saves	Sho
2012-13	4	180:00	2	0.67	67	1
Totals	4	180:00	2	0.67	67	1



Tara's Profile

Number: 33

Year: First-year

Position: Goaltender

Hometown: Coon Rapids, Minn.

High School: Blaine

Major: Undeclared

33 TARA HOVERSTAD

2012-13 Stats						
GP	Min.	GA	GAA	Saves	Sho	
6	240:00	3	0.75	60	1	

Career Stats						
Year	GP	Min.	GA	GAA	Saves	Sho
2012-13	6	240:00	3	0.75	60	1
Totals	5	240:00	3	0.75	60	1





2012-13 GUSTAVUS ADOLPHUS WOMEN'S HOCKEY GAME NOTES

2012-13 COMBINED STATISTICS

The Automated ScoreBook Gustavus Combined Team Statistics (as of Jan 25, 2013) All games

Date	Opponent	Score	Att.
Oct 30	UW-SUPERIOR	w 3-2	221
* Nov 09	#10 BETHEL UNIVERSITY	w 3-1	379
* Nov 10	at #10 Bethel University	w 2-0	213
* Nov 16	at Tommies	w 4-1	260
* Nov 17	#10 TOMMIES	w 1-0	181
* Nov 30	AUGSBURG	w 5-0	221
* 12/01/12	at Augsburg	w 3-1	88
Dec 08	BETHEL UNIVERSITY	w 3-1	151
12/12/2012	at #6 UW-River Falls	w 2-1	197
Dec 14	#6 UW-RIVER FALLS	w 3-2	0
Jan 11	UW-STEVENSON	w 7-3	331
Jan 12	UW-STEVENSON	w 1-0	458
* Jan 18	ST. CATHERINE	w 2-1	312
* Jan 19	at St. Catherine	w 3-1	125

TEAM STATISTICS	GAC	OPP
SHOT STATISTICS		
Goals-Shot attempts	42-527	14-261
Shot pct.	.080	.054
Goals/Game	3.0	1.0
Shots/Game	37.6	18.6
POWER PLAYS		
Goals-Power Plays	9-45	4-41
Conversion Percent	.200	.098
Shot Attempts	93	49
Shot Percent	.097	.082
GOAL BREAKDOWN		
Power Play	9	4
Short-handed	2	0
Empty net	2	0
Penalty	0	0
Unassisted	8	1
Overtime	0	0
Shootout	0	0
Delayed Penalty	0	0
PENALTIES		
Number	46	50
Minutes	92	103
Penalties/Game	3.3	3.6
Pen minutes/Game	6.6	7.4
SHOOTOUTS (Made-Att)	0-0	0-0

Record:	Overall	Home	Away	Neutral
ALL GAMES	14-0-0	9-0-0	5-0-0	0-0-0
CONFERENCE	8-0-0	4-0-0	4-0-0	0-0-0
NON-CONFERENCE	6-0-0	5-0-0	1-0-0	0-0-0

#	Player	gp	g	a	pts	sh	sh%	pen-min	pp	sh
2	Meagan Wanecke	14	7	4	11	54	.130	4-8	0	0
8	A. Eder-Zdechlik	14	5	5	10	43	.116	1-2	2	0
17	Lindsey Hjelm	14	3	7	10	80	.038	15-30	1	1
18	Carolyn Draayer	12	5	4	9	51	.098	1-2	1	1
5	Jenna Christensen	14	3	6	9	28	.107	2-4	0	0
21	Brianna Seebold	14	4	3	7	21	.190	2-4	2	0
14	Melissa Doyle	14	4	1	5	30	.133	2-4	0	0
10	Courtney Boucher	14	3	1	4	34	.088	2-4	0	0
22	Marissa Brandt	14	1	3	4	12	.083	0-0	0	0
15	Leah Johnson	14	1	3	4	21	.048	2-4	1	0
9	Amanda Cartony	13	1	2	3	27	.037	1-2	1	0
23	Kayla Ingbertson	14	1	2	3	14	.071	0-0	0	0
11	Keri Pickel	14	1	2	3	18	.056	1-2	0	0
19	Kelly Thotland	13	1	2	3	20	.050	1-2	1	0
4	Maddie Bergh	13	0	3	3	7	.000	0-0	0	0
3	Emily Reibert	14	2	0	2	17	.118	3-6	0	0
16	Kelsey Kennedy	14	0	1	1	32	.000	3-6	0	0
7	Beth Olson	10	0	1	1	14	.000	2-4	0	0
24	Heidi Korin	4	0	0	0	3	.000	1-2	0	0
12	Taylor Skelton	5	0	0	0	1	.000	1-2	0	0
TM	TEAM	2	0	0	0	0	.000	2-4	0	0
Total		14	42	50	92	527	.080	46-92	9	2
Opponents		14	14	17	31	261	.054	50-103	4	0

#	Goalie	gp	min	ga	gaavg	saves	save%	w-l-t
30	Colleen Jacoby	4	180:00	2	0.67	67	.971	3-0-0
33	Tara Hoverstad	6	240:00	3	0.75	60	.952	4-0-0
1	Lindsey Hibbard	10	419:49	9	1.29	120	.930	7-0-0
TM	EMPTY NET	2	0:11	0	-	0	.000	0-0-0
Total		14	840:00	14	1.00	247	.946	14-0-0
Opponents		14	840:00	42	3.00	485	.920	0-14-0

Attendance Summary	GAC	Opponent
Total	2254	883
Dates/Avg Per Date	9/250	5/177
Neutral Site #/Avg	0/0	

Goals by Period	1st	2nd	3rd	Total
Gustavus	17	13	12	42
Opponents	3	3	8	14

Saves by Period	1st	2nd	3rd	Total
Gustavus	73	87	87	247
Opponents	183	181	121	485



2012-13 GUSTAVUS ADOLPHUS WOMEN'S HOCKEY GAME NOTES

2012-13 TEAM STATISTICS

The Automated ScoreBook Gustavus Overall Team Statistics (as of Jan 25, 2013) All games

Overall: 14-0-0 Conf: 8-0-0 Home: 9-0-0 Away: 5-0-0 Neut: 0-0-0

TEAM STATISTICS	GAC	OPP
SHOT STATISTICS		
Goals-Shot attempts	42-527	14-261
Shot pct.	.080	.054
Goals/Game	3.0	1.0
Shots/Game	37.6	18.6
Assists	50	17
POWER PLAYS		
Goals-Power Plays	9-45	4-41
Conversion Percent	.200	.098
Shot Attempts	93	49
Shot Percent	.097	.082
GOAL BREAKDOWN		
Total Goals	42	14
Power Play	9	4
Short-handed	2	0
Empty net	2	0
Penalty	0	0
Unassisted	8	1
Overtime	0	0
Shootout	0	0
Delayed Penalty	0	0
PENALTIES		
Number	46	50
Minutes	92	103
Penalties/Game	3.3	3.6
Pen minutes/Game	6.6	7.4
Minor	46	49
Major	0	1
10-minute Misconduct	0	0
Game Misconduct	0	0
Gross Misconduct	0	0
Match	0	0
SHOOTOUTS (Made-Att)	0-0	0-0
ATTENDANCE		
Total	2254	883
Dates/Avg Per Date	9/250	5/177
Neutral Site #/Avg	0/0	

Goals by Period	1st	2nd	3rd	Total
Gustavus	17	13	12	42
Opponents	3	3	8	14

Saves by Period	1st	2nd	3rd	Total
Gustavus	73	87	87	247
Opponents	183	181	121	485



2012-13 GUSTAVUS ADOLPHUS WOMEN'S HOCKEY GAME NOTES

2012-13 INDIVIDUAL STATISTICS

The Automated ScoreBook Gustavus Overall Individual Statistics (as of Jan 25, 2013) All games

Overall: 14-0-0 Conf: 8-0-0 Home: 9-0-0 Away: 5-0-0 Neut: 0-0-0

##	Player	gp	Shots					+-	Penalties				Goals										
			g	a	pts	sh	sh%		pen-min	min	maj	oth	pp	sh	fg	gw	gt	ot	ht	pn	ua		
2	Meagan Wanecke	14	7	4	11	54	.130	+9	4-8	4	0	0	0	0	0	3	4	0	0	0	0	0	1
8	A. Eder-Zdechlik	14	5	5	10	43	.116	+6	1-2	1	0	0	0	2	0	2	2	0	0	0	0	0	1
17	Lindsey Hjelm	14	3	7	10	80	.038	+10	15-30	15	0	0	0	1	1	0	0	0	0	0	0	0	2
18	Carolyn Draayer	12	5	4	9	51	.098	+8	1-2	1	0	0	0	1	1	2	3	0	0	0	0	0	1
5	Jenna Christensen	14	3	6	9	28	.107	+12	2-4	2	0	0	0	0	0	0	1	0	0	0	0	0	0
21	Brianna Seebold	14	4	3	7	21	.190	+5	2-4	2	0	0	0	2	0	1	2	0	0	0	0	0	1
14	Melissa Doyle	14	4	1	5	30	.133	+10	2-4	2	0	0	0	0	0	1	0	0	0	0	0	0	0
10	Courtney Boucher	14	3	1	4	34	.088	+4	2-4	2	0	0	0	0	0	1	1	0	0	0	0	0	1
22	Marissa Brandt	14	1	3	4	12	.083	+7	0-0	0	0	0	0	0	0	0	0	0	0	0	0	0	1
15	Leah Johnson	14	1	3	4	21	.048	+1	2-4	2	0	0	0	1	0	1	0	0	0	0	0	0	0
9	Amanda Cartony	13	1	2	3	27	.037	+3	1-2	1	0	0	0	1	0	1	0	0	0	0	0	0	0
23	Kayla Ingbretson	14	1	2	3	14	.071	+5	0-0	0	0	0	0	0	0	0	0	0	0	0	0	0	0
11	Keri Pickel	14	1	2	3	18	.056	+2	1-2	1	0	0	0	0	0	1	0	0	0	0	0	0	0
19	Kelly Thotland	13	1	2	3	20	.050	+11	1-2	1	0	0	0	1	0	0	0	0	0	0	0	0	0
4	Maddie Bergh	13	0	3	3	7	.000	+3	0-0	0	0	0	0	0	0	0	0	0	0	0	0	0	0
3	Emily Reibert	14	2	0	2	17	.118	+5	3-6	3	0	0	0	0	0	0	1	0	0	0	0	0	0
16	Kelsey Kennedy	14	0	1	1	32	.000	+4	3-6	3	0	0	0	0	0	0	0	0	0	0	0	0	0
7	Beth Olson	10	0	1	1	14	.000	+5	2-4	2	0	0	0	0	0	0	0	0	0	0	0	0	0
24	Heidi Korin	4	0	0	0	3	.000	0	1-2	1	0	0	0	0	0	0	0	0	0	0	0	0	0
12	Taylor Skelton	5	0	0	0	1	.000	+2	1-2	1	0	0	0	0	0	0	0	0	0	0	0	0	0
TM	TEAM	2	0	0	0	0	.000	0	2-4	2	0	0	0	0	0	0	0	0	0	0	0	0	0
	Total	14	42	50	92	527	.080	+112	46-92	46	0	0	0	9	2	13	14	0	0	0	0	0	8
	Opponents	14	14	17	31	261	.054	-	50-103	49	1	0	0	4	0	1	0	0	0	0	0	0	1

##	Goalie	gp-gs	Goal average			Saves		Record				Goals allowed				
			minutes	ga	avg	saves	pct	w	l	t	sho	pp	sh	en	pen	sog
30	Colleen Jacoby	4-2	180:00	2	0.67	67	.971	3	0	0	1	1	0	0	0	0
33	Tara Hoverstad	6-4	240:00	3	0.75	60	.952	4	0	0	1	0	0	0	0	0
1	Lindsey Hibbard	10-8	419:49	9	1.29	120	.930	7	0	0	1	3	0	0	0	0
TM	EMPTY NET	2-0	0:11	0	-	0	.000	0	0	0	1	0	0	0	0	0
	Total	14-0	840:00	14	1.00	247	.946	14	0	0	4	4	0	0	0	0
	Opponents	14-0	840:00	42	3.00	485	.920	0	14	0	0	9	2	2	0	0



2012-13 GUSTAVUS ADOLPHUS WOMEN'S HOCKEY GAME NOTES

2012-13 CATEGORY LEADERS

The Automated ScoreBook Gustavus Category Leaders (as of Jan 25, 2013) All games

##	Points	GP	G	A	Pts	Sh
2	Meagan Wanecke	14	7	4	11	54
8	A. Eder-Zdechlik	14	5	5	10	43
17	Lindsey Hjelm	14	3	7	10	80
18	Carolyn Draayer	12	5	4	9	51
5	Jenna Christensen	14	3	6	9	28
21	Brianna Seebold	14	4	3	7	21
14	Melissa Doyle	14	4	1	5	30
10	Courtney Boucher	14	3	1	4	34
22	Marissa Brandt	14	1	3	4	12
15	Leah Johnson	14	1	3	4	21

##	Goals	GP	G	A	Pts	Sh
2	Meagan Wanecke	14	7	4	11	54
8	A. Eder-Zdechlik	14	5	5	10	43
18	Carolyn Draayer	12	5	4	9	51
21	Brianna Seebold	14	4	3	7	21
14	Melissa Doyle	14	4	1	5	30
17	Lindsey Hjelm	14	3	7	10	80
5	Jenna Christensen	14	3	6	9	28
10	Courtney Boucher	14	3	1	4	34
3	Emily Reibert	14	2	0	2	17
22	Marissa Brandt	14	1	3	4	12

##	Power-Play Goals	GP	PPG
8	A. Eder-Zdechlik	14	2
21	Brianna Seebold	14	2

##	Short-Handed Goals	GP	SHG
18	Carolyn Draayer	12	1
17	Lindsey Hjelm	14	1

##	Game-Winning Goals	GP	GWG
2	Meagan Wanecke	14	4
18	Carolyn Draayer	12	3
21	Brianna Seebold	14	2
8	A. Eder-Zdechlik	14	2

##	Plus/Minus	GP	+/-
5	Jenna Christensen	14	+12
19	Kelly Thotland	13	+11
17	Lindsey Hjelm	14	+10
14	Melissa Doyle	14	+10
2	Meagan Wanecke	14	+9
18	Carolyn Draayer	12	+8
22	Marissa Brandt	14	+7
8	A. Eder-Zdechlik	14	+6
7	Beth Olson	10	+5
3	Emily Reibert	14	+5

##	Assists	GP	G	A	Pts	Sh
17	Lindsey Hjelm	14	3	7	10	80
5	Jenna Christensen	14	3	6	9	28
8	A. Eder-Zdechlik	14	5	5	10	43
2	Meagan Wanecke	14	7	4	11	54
18	Carolyn Draayer	12	5	4	9	51
21	Brianna Seebold	14	4	3	7	21
22	Marissa Brandt	14	1	3	4	12
15	Leah Johnson	14	1	3	4	21
4	Maddie Bergh	13	0	3	3	7
9	Amanda Cartony	13	1	2	3	27

##	Shots	GP	G	A	Pts	Sh	Sh%
17	Lindsey Hjelm	14	3	7	10	80	.038
2	Meagan Wanecke	14	7	4	11	54	.130
18	Carolyn Draayer	12	5	4	9	51	.098
8	A. Eder-Zdechlik	14	5	5	10	43	.116
10	Courtney Boucher	14	3	1	4	34	.088
16	Kelsey Kennedy	14	0	1	1	32	.000
14	Melissa Doyle	14	4	1	5	30	.133
5	Jenna Christensen	14	3	6	9	28	.107
9	Amanda Cartony	13	1	2	3	27	.037
21	Brianna Seebold	14	4	3	7	21	.190

##	Shot Pct.	GP	G	A	Pts	Sh	Sh%
21	Brianna Seebold	14	4	3	7	21	.190
14	Melissa Doyle	14	4	1	5	30	.133
2	Meagan Wanecke	14	7	4	11	54	.130
3	Emily Reibert	14	2	0	2	17	.118
8	A. Eder-Zdechlik	14	5	5	10	43	.116
5	Jenna Christensen	14	3	6	9	28	.107
18	Carolyn Draayer	12	5	4	9	51	.098
10	Courtney Boucher	14	3	1	4	34	.088
22	Marissa Brandt	14	1	3	4	12	.083
23	Kayla Ingbertson	14	1	2	3	14	.071

##	Penalties	GP	Pen	Min
17	Lindsey Hjelm	14	15	30
2	Meagan Wanecke	14	4	8
3	Emily Reibert	14	3	6
16	Kelsey Kennedy	14	3	6
10	Courtney Boucher	14	2	4
7	Beth Olson	10	2	4
15	Leah Johnson	14	2	4
5	Jenna Christensen	14	2	4
TM	TEAM	2	2	4
14	Melissa Doyle	14	2	4

##	Penalty Minutes	GP	Pen	Min
17	Lindsey Hjelm	14	15	30
2	Meagan Wanecke	14	4	8
16	Kelsey Kennedy	14	3	6
3	Emily Reibert	14	3	6
TM	TEAM	2	2	4
14	Melissa Doyle	14	2	4
21	Brianna Seebold	14	2	4
5	Jenna Christensen	14	2	4
10	Courtney Boucher	14	2	4
7	Beth Olson	10	2	4