



GUSTAVUS

WOMEN'S HOCKEY

2011-12 GUSTAVUS SCHEDULE

Date	Opponent	Time/Result
11/4	Concordia Univ.	W 7-1
11/5	St. Norbert	W 8-1
11/11	Bethel *	W 5-1
11/12	Bethel *	W 6-3
11/18	St. Thomas *	W 5-3
11/19	St. Thomas *	W 3-2
12/2	Augsburg *	W 9-0
12/3	Augsburg *	W 7-2
12/6	UW-River Falls	T 1-1 (OT)
12/13	UW-Superior	W 1-0 (OT)
1/6	UW-Stevens Point	W 6-0
1/7	UW-Stevens Point	W 5-2
1/20	St. Catherine *	W 7-0
1/21	St. Catherine *	W 3-0
1/27	Concordia *	W 4-1
1/28	Concordia *	T 3-3 (OT)
1/31	UW-Superior	L 1-5
2/3	Hamline *	W 3-2
2/4	Hamline *	W 2-1
2/10	Saint Mary's *	W 8-2
2/11	Saint Mary's *	W 5-0
2/17	St. Olaf *	W 5-0
2/18	St. Olaf *	L 2-5
2/24	Saint Benedict *	W 9-1
2/25	Saint Benedict *	W 7-2
3/1	Bethel ^	W 1-0 (OT)
3/3	Concordia ^	W 4-2
3/10	UW-River Falls #	W 4-2
3/16	Norwich #	6:00 p.m.
3/17	NCAA Finals #	TBA

Home Games in bold; all times Central

* MIAC Game ^ MIAC Playoff Game

NCAA Tournament Game

Women's Hockey Contacts

Sports Information Director: Ethan Armstrong

Email: earmstr2@gustavus.edu

Cell Phone: 320-815-2351

Office Phone: 507-933-7647

Assistant Sports Info. Director: CJ Siewert

Email: csiewer3@gustavus.edu

Cell Phone: 507-779-4135

Office Phone: 507-933-8411

NCAA Division III Championship

Rochester, NY



No. 5 Gustavus

24-2-2 Overall
MIAC Champions

vs.

No. 2 Norwich

26-2-1 Overall
ECAC East Champions



DATE: Friday, March 16, 2012

TIME: 7:00 p.m. EST

WEB AUDIO: <http://pirateradio.rit.edu/>

LIVE VIDEO: <http://www.ncaa.com/liveschedule>

LIVE STATS: <http://www.sidearmstats.com/rit/whockey/index.htm>

TWITTER: @GustieAthletics, @NorwichCadets



No. 1 Rochester IT

26-1-1 Overall
ECAC West Champs

vs.

No. 6 Plattsburgh

19-6-3 Overall
ECAC West Runner-Up



DATE: Friday, March 16, 2012

TIME: 3:30 p.m. EST

WEB AUDIO: <http://pirateradio.rit.edu/>

LIVE VIDEO: <http://www.ncaa.com/liveschedule>

LIVE STATS: <http://www.sidearmstats.com/rit/whockey/index.htm>

TWITTER: @RITsports

TICKET INFORMATION

Tickets are on sale at the Gordon Field House box office on the campus of Rochester Institute of Technology. Tickets can be purchased in person, by phone (585) 475-4121 or at ticketmaster.com. Single-day (Friday or Saturday) ticket prices are \$12 for adults, \$6 for students and \$4 for children under 12. Weekend passes (all four games) are \$18 for adults, \$10 for students and \$7 for children under 12.



2011-12 GUSTAVUS ADOLPHUS WOMEN'S HOCKEY GAME NOTES

FINAL MIAC STANDINGS

School	MIAC	Points	Overall
Gustavus	16-1-1	33	24-2-2
Concordia	10-3-5	25	15-6-5
St. Thomas	11-6-1	23	15-8-2
St. Olaf	9-7-2	20	9-13-4
Bethel	9-7-2	20	12-10-4
St. Catherine	8-8-2	18	12-10-2
Saint Mary's	4-9-5	13	7-12-6
Augsburg	3-11-4	10	6-11-8
St. Ben's	3-12-3	9	5-17-3
Hamline	4-13-1	9	8-15-2

FINAL ECAC EAST STANDINGS

School	ECAC-E	Points	Overall
Norwich	17-0-1	35	26-2-1
Holy Cross	14-3-1	29	19-4-3
St. Anselm	12-5-1	25	20-6-1
Manhattanville	11-4-3	25	15-9-4
New England	8-7-3	19	11-13-3
Salve Regina	7-7-4	18	11-10-5
Castleton	8-8-2	18	10-14-2
Southern Me.	7-9-2	16	7-15-4
Mass.-Boston	5-11-2	12	7-15-3
Nichols	4-12-2	10	7-17-2
St. Michael's	2-15-1	5	3-22-1
Plymouth St.	1-15-2	4	1-19-3

FINAL ECAC WEST STANDINGS

School	ECAC-W	Points	Overall
RIT	16-1-1	33	26-1-1
Plattsburgh St.	15-1-2	32	19-6-3
Elmira	15-3-0	30	20-5-1
Oswego St.	8-8-2	18	11-14-2
Neumann	8-8-2	18	9-13-2
Potsdam St.	7-8-3	17	12-10-3
Utica	7-9-2	16	10-12-3
Buffalo St.	4-13-1	9	7-16-2
Cortland St.	3-14-1	7	5-16-1
Chatham	0-18-0	0	0-18-0

GAME NOTES

THE MATCH-UP... Last Saturday in St. Peter, Minn., the Gustavus women's hockey team scored three unanswered goals after falling behind 1-0 en route to a 4-2 victory over UW-River Falls in the first round of the NCAA Division III Women's Hockey Tournament. The win earned the Gusties their third consecutive trip to the Frozen Four where they will face off against defending champion Norwich University in the semifinals for the second-straight season.

Gustavus enters the match-up with a 24-2-2 record as the No. 5 team in NCAA Division III according to the latest USCHO.com poll. Norwich shut out Amherst 5-0 Saturday and comes into the Frozen Four with a 26-2-1 record, while boasting a No. 2 ranking in the USCHO.com poll.

Last season in the NCAA semifinals, the Cadets edged the Gusties 5-4 at Rochester Institute of Technology's Ritter Arena. Norwich took a commanding 5-1 lead at the end of the second period before the Three Crowns charged back with three unanswered goals in the third, nearly overcoming the four-goal deficit. **Julie Fortier** recorded a hat trick for the Cadets, while **Jenna Christensen** led the Gusties with two goals.

GUSTAVUS COVERAGE... Gustavus Interim Sports Information Director Ethan Armstrong will be in Rochester, N.Y. to cover the entire trip for the Gustavus women's hockey team. The Gusties departed from Minnesota to New York on Wednesday and Ethan will post a travel blog on the Gustavus Athletics website with frequent updates on the team's agenda each day.

LAST TIME OUT... "Testing the waters" may have best described the first period of play in last Saturday's NCAA Division III Women's Hockey first round game in St. Peter, Minn. between Gustavus and the University of Wisconsin-River Falls. Neither team generated many scoring opportunities until the Falcons tallied the go-ahead goal with just :24 seconds left in the frame. The Gusties came out with a renewed sense of urgency in the second period, scoring three unanswered goals on their way to a 4-2 victory.

Allie Schwab tallied two goals, while **Mollie Carroll** and **Amanda Cartony** added the other two. **Danielle Justice** improved her unbeaten record to 18-0-2 in goal after matching a season-high 24 saves, 12 of which came while the Falcons were on the power play.

MEET THE NORWICH COACHING STAFF... **Mark Bolding** is in his ninth season as head coach of the Norwich women's hockey team and fifth as a varsity program. He has been the driving force behind the team's rapid improvement in the Division III women's hockey ranks that culminated last March with the Cadets winning their first NCAA Championship with a 5-2 win over Rochester Institute of Technology in only their fourth season. Bolding has guided the Cadets to a 102-31-10 record in five seasons and has been named the American Hockey Coaches' Association (AHCA) National "Coach of the Year" the last two seasons, as well as the New England Writers' Women's "Coach of the Year."

Bolding is assisted by **Keith Maurice** (Norwich '02), a member of the Norwich men's hockey 2000 national championship team. Three other assistant coaches volunteer their time - **Dana Bean**, **Holly Russo** and **Jon Guiffre**.

ABOUT NORWICH... The Cadets captured the NCAA Championship last season in just their fourth season as a varsity program. On the road to the national title, the Cadets won their first ECAC East Championship by going unbeaten with a 17-0-1 record in league play to make their third-straight NCAA Tournament appearance. Norwich set team records in wins (25) and conference victories (17).



2011-12 GUSTAVUS ADOLPHUS WOMEN'S HOCKEY GAME NOTES

GAME NOTES

This season, Norwich has already broke its previous record in wins with a 26-2-1 mark heading into the NCAA Semifinals. The Cadets are led offensively by senior forward **Julie Fortier** (Saint-Malachie, Quebec/Levis Lauzon) with 30 goals and 23 assists for 53 points. Her 1.89 points per game average leads the nation. Fortier also leads all Division III with a 1.07 goals per game average. Behind Fortier include three forwards with at least 40 points - junior **Jillayne DeBus** (Howell, Mich./Elmira College) (21G, 27A), first-year **Kaycie Anderson** (Maple Plain, Minn./Minnesota Crunch U-19AA) (22G, 24A) and senior **Melissa Rundlett** (Saco, Maine/Kents Hill Prep) (14G, 26A).

In goal, Coach Bolding has awarded his squad's goal tending duties to sophomore **Kelly Fisk** (Hannibal, N.Y./Syracuse Nationals). Appearing in 20 games, Fisk carries a goals against average of 1.33 (6th/NCAA), save percentage of .923 (26th/NCAA) and a 19-1-0 record (2nd/NCAA). She also leads all Division III with eight shutouts.

THE SERIES... Friday's NCAA semifinal match will mark the second meeting between the Gusties and Cadets on the ice. Norwich won the inaugural meeting between the two squads in last year's NCAA Semifinal 5-4 in Rochester, N.Y.

Julie Fortier tallied two goals in the first period for the Cadets and opened the second with a power play goal to complete the hat trick, while giving her squad a 3-0 lead. Not long after Fortier's third goal, **Lindsey Hjelm** put the Gusties on the board with an unassisted goal (3-1). Norwich came right back at it, though, and tallied two more goals late in the period off the sticks of **Melissa Rundlett** and **Brittane Michaud** for a commanding 5-1 lead at the second intermission.

Gustavus wasn't about to lie down with a four-goal deficit on its hands and responded right out of the gates in the third. **Jenna Christensen** scored 1:15 into the frame and **Allie Schwab** cut the deficit to two at 5-3 at the 7:23 mark. With their goalie pulled and an extra attacker on the ice, the Gusties made it a one-goal game with :37 seconds left in regulation after Christensen tallied her second goal of the frame. But the comeback fell just short as the Cadets skated away with the victory and eventually the NCAA Championship.

Game Summary

March 18, 2011

Ritter Arena - Rochester, N.Y.

Gustavus 4, Norwich 5

NU 2 3 0 - 5

GAC 0 1 3 - 4

1st: NU - Fortier 21 (Rundlett, Lortie), 9:44

NU - Fortier 22 (Rundlett), 18:11

2nd: NU - Fortier 23 (Lynn, Leclerc), PPG, 2:27

GAC - Hjelm 12 (unassisted), 4:48

NU - Rundlett 16 (Fortier, Leclerc), PPG, 12:01

NU - Michaud 7 (DeBus, Leclerc), 16:59

3rd: GAC - Christensen 7 (Wanecke, Schaff), 1:15

GAC - Schwab 15 (Peterson, Carroll), PPG, 7:23

GAC - Christensen 8 (Schwab, Peterson), EX, 19:23

Penalties: GAC 5-10, NU 8-16

Power Play: GAC 1-7, NU 2-5

Saves: Justice (GAC) 3-10-8 - 21 (59:26)

Fortin (NU) 10-10-12 - 32 (60:00)

STAT COMPARISON

Gustavus

4.68 (3rd)

1.50 (6th)

3.18 (3rd)

8.0 (47th)

29.1 (3rd)

91.5 (2nd)

56.7 (3rd)

.893 (3rd)

5 (3rd)

RIT

5.04 (2nd)

1.00 (1st)

4.04 (2nd)

12.9 (7th)

30.1 (2nd)

94.1 (1st)

62.8 (1st)

.946 (1st)

12 (1st)

Norwich

Goals For

6.14 (1st)

Goals Against

1.14 (2nd)

Scoring Margin

5.00 (1st)

Penalty Minutes

8.7 (39th)

Power Play

35.8 (1st)

Penalty Kill

87.6 (10th)

Combined Special Teams

58.2 (2nd)

Win Percentage

.914 (2nd)

Current Unbeaten Streak

12 (1st)

Plattsburgh

Goals For

4.25 (5th)

Goals Against

1.61 (8th)

Scoring Margin

2.64 (5th)

Penalty Minutes

9.1 (33rd)

Power Play

26.7 (4th)

Penalty Kill

86.1 (17th)

Combined Special Teams

55.4 (6th)

Win Percentage

.732 (8th)

Current Unbeaten Streak

1 (6th)

(Overall per game averages with national rank)

NCAA DIVISION III RANKINGS

USCHO.com Division III Women's Poll

RK	Team	Record	Pts.	PR
1	RIT (14)	25-1-1	149	1
2	Norwich (1)	25-2-1	136	2
3	Middlebury	21-3-3	117	4
4	Amherst	21-5-1	94	3
5	Gustavus	23-2-2	89	6
6	Plattsburgh	18-6-3	77	5
7	UW-River Falls	23-4-2	67	7
8	Elmira	20-5-1	36	8
9	Concordia (MN)	15-5-5	30	10
10	UW-Superior	17-8-3	14	9

Others receiving votes: Adrian (5), St. Thomas (4), Trinity (3), Bowdoin (2), Lake Forest (1), Oswego (1).

PairWise Comparison: Division III Women

Team	GP	W-L-T	Win%	Win% Rk
RIT	25	23-1-1	.9400	1
Norwich	24	21-2-1	.8958	2
Gustavus	28	24-2-2	.8929	3
UW-River Falls	29	23-4-2	.8276	4
Middlebury	27	20-4-3	.7963	5
Elmira	26	20-5-1	.7885	6
Amherst	26	19-6-1	.7500	7
Plattsburgh	28	19-6-3	.7321	8
Concordia (MN)	23	14-4-5	.7174	9
UW-Superior	28	17-8-3	.6607	10



2011-12 GUSTAVUS ADOLPHUS WOMEN'S HOCKEY GAME NOTES

QUICK FACTS

GUSTAVUS ADOLPHUS COLLEGE

Location	St. Peter, Minnesota
Address	800 West College Ave. St. Peter, MN 56082
Founded	1862
Enrollment	2,572
Nickname	Golden Gusties
School Colors	Black and Gold
Home Arena	Don Roberts Ice Rink
Conference	Minnesota Intercollegiate Athletic Conference
President	Jack R. Ohle
Athletic Director	Al Molde
AD Office Phone	507-933-7622
Sports Information Director	Ethan Armstrong
SID Office Phone	507-933-7647
Website	www.gustavus.edu/athletics

ROCHESTER INSTITUTE OF TECHNOLOGY

Location	Rochester, New York
Address	One Lomb Memorial Drive Rochester, N.Y. 14623
Founded	1829
Enrollment	17,652
Nickname	Tigers
School Colors	Orange and Brown
Home Arena	Ritter Ice Arena
Conference	Eastern College Athletics Conference
President	Bill Destler
Athletic Director	Lou Spiotti Jr.
AD Office Phone	585-475-2615
Sports Information Director	Joe Venniro
SID Office Phone	585-475-5598
Website	www.ritathletics.com

NORWICH UNIVERSITY

Location	Northfield, Vermont
Address	158 Harmon Drive Northfield, Ver. 05663
Founded	1819
Enrollment	3,500
Nickname	Cadets
School Colors	Maroon and Gold
Home Arena	Kreitzberg Arena
Conference	Great Northeast Athletic Conference
President	Dr. Richard W. Schneider
Athletic Director	Anthony Mariano
AD Office Phone	802-485-2232
Sports Information Director	Mark Adkins
SID Office Phone	802-485-2160
Website	www.norwichathletics.com

STATE UNIVERSITY OF NEW YORK AT PLATTSBURGH

Location	Plattsburgh, New York
Address	101 Broad Street Plattsburgh, N.Y. 12901
Founded	1889
Enrollment	6,850
Nickname	Cardinals
School Colors	Red and White
Home Arena	Ronald B. Stafford Ice Arena
Conference	Eastern College Athletics Conference
President	John Ettling
Athletic Director	Bruce Delventhal
AD Office Phone	518-564-4278
Sports Information Director	Stephanie Dutton
SID Office Phone	518-564-4148
Website	www.gocardinalsports.com

GAME NOTES

NORWICH'S LAST TIME OUT... The Norwich women's hockey team advanced to the Division III National Semifinals for the third-straight year with a 5-0 shutout of Amherst last Saturday afternoon in NCAA Quarterfinal action at Kreitzberg Arena in Northfield, Vt. Junior forward Jillayne DeBus continued her sensational 2012 postseason with two goals and an assist to give her a total of five goals and two assists in four playoff games so far. Sophomore goalie Kelly Fisk stopped all 18 shots she faced to improve to 19-1-0 and increase her program single-season shutout record to eight.

POLL POSITION... Gustavus is ranked No. 5 in the latest United States College Hockey Online (USCHO.com) poll, receiving 89 points. The March 5, 2012 poll marks the 139th consecutive week the Gusties have been ranked in the USCHO.com poll. The last week Gustavus was not included in the online poll was Feb. 16, 2004.

5-FOOT, 3-INCH ROADBLOCK... Gustavus senior goalie **Danielle Justice (Alexandria, Minn.)** has put together the best career of any goalie in a Gustie sweater since joining the squad in 2008. The 5'3" netminder has literally every career goalie record in the 15-year history of Gustavus women's hockey. Her career records for a goalie at Gustavus include games played (86), games started (82), minutes (4834:06), goals against average (minimum 1000 minutes: 1.03), saves (1254), save percentage (minimum 1000 minutes: .934) and wins (61-10-9). The Alexandria, Minn. native also ranks high on the list of career records among all-time NCAA Division III goalies. Justice ranks eighth in goalie winning percentage (.819), fifth in save percentage (.934), fourth in both goalie wins (61) and goalie shutouts (24), and is third in goals against average (1.03).

TOP LINE SCORING... Gustavus' top line of forwards include seniors **Mollie Carroll** and **Allie Schwab**, along with sophomore **Amanda Cartony**. All three forwards garnered All-Conference honors this season, as Schwab was named MIAC Player-of-the-Year. The accolades come as no surprise as the three lead the team in scoring on a squad that ranks third in the nation in goal-scoring. Cartony, Carroll and Schwab have combined for 54 goals and 55 assists for 109 points, which accounts for 36-percent of the team's scoring this season..

GUSTIE WATCH... *Player profiles for Gustavus' top performers:*

- Senior forward **Allie Schwab (Stillwater, Minn.)** was named the MIAC Player-of-the-Year following the 2011-12 conference season. Schwab registered career-highs in goals (24), assists (19), and points (43) this season to lead the lead the team and league in points and goals scored. Schwab's 43 points this season currently ranks fourth in the nation heading into the 2012 Division III Frozen Four. The senior's eight game-winning goals ranks first in the country, while her eight power play goals ranks eighth. She has also tallied three hat tricks this season, the first Gustie hockey player to do so since Mckenzie Stensland tallied three in the 2001-02 season. The Stillwater, Minn. native carries a +34 rating this season and is winning face-offs at a 67.7-percent rate. Schwab has played in all 116 games of her collegiate career, earning "Iron Woman" honors. Friday's contest versus Norwich will mark the 117th game of her career, breaking current Gustavus assistant coach Kirstin Peterson's games played school record of 116.

A two-time All-Conference performer (2009-10 & 2011-12) and a member of the 2008-09 All-Rookie Team, Schwab's career 122 (70G, 52A) points ranks sixth while her 70 career goals ranks third in Gustavus women's hockey history. With the Player-of-the-Year honor, Schwab joins the likes of Sarah Garrison-Moe (1998-99, 2001-02), Andrea Peterson (2003-04, 2004-05, 2005-06, 2006-07) and Stefanie Ubl (2007-08) as Gusties to receive the recognition. Schwab will graduate this spring with a degree in nursing.



2011-12 GUSTAVUS ADOLPHUS WOMEN'S HOCKEY GAME NOTES

GAME NOTES

- Senior forward **Mollie Carroll (Eagan, Minn.)** earned All-Conference honors for the first time during her four years wearing the black and gold this season. A top-line forward alongside Allie Schwab and Amanda Cartony, Carroll has set career-highs in goals (16), assists (22) and points (38) this season. Her 22 assists led the conference and her 38 points ranked in the second in the league and ninth in NCAA Division III. Carroll has scored 46.9-percent of her points this season and was also named MIAC Women's Hockey Athlete-of-the-Week twice on Nov. 14th and March 3rd. The Eagan, Minn. native became the 21st player in Gustavus women's hockey history to play in over 100 games this season, recording career totals of 35 goals and 46 assists for 81 points in 108 contests. This season, Carroll has recorded a three-point game six times with 10 multi-point performances. Mollie will graduate this spring with a degree in public accounting.

- Junior defender **Lindsey Hjelm (North Oaks, Minn.)** took home All-Conference honors for the third time in her career after making the transition from forward to defense this season. Hjelm is the second-ranked scoring defender in the MIAC with nine goals and 14 assists for 23 points. Her 0.82 points per game average ranks eighth in NCAA Division III among defenders. On the power play, Hjelm ranks third on the team in points with 11 (4G, 7A). Last season, the North Oaks, Minn. native led the team with 30 points on 12 goals and 18 assists.

With an aggressive style of play and a constant physical presence when on the ice, Hjelm became the program's "Penalty Queen" this season by setting a new career mark for penalty minutes. She has totaled 85 penalties for 170 minutes in her career. Lindsey is a biology major who has skated in all 88 games of her collegiate career, tallying 77 career points (32G, 45A).

- Sophomore forward **Amanda Cartony (Stillwater, Minn.)** was named to the All-Conference team for the second-straight season. Cartony lit up the scoresheet in February, finishing with a team-high 11 points on eight goals and three assists, earning her Female Student-Athlete of the Month recognition. The Stillwater, Minn. native garnered MIAC Women's Hockey Athlete-of-the-Week honors after a five-point (4G, 1A) performance against Saint Benedict in the regular-season series-finale. At a +20 rating, Cartony finished second on the team in goals with 14 and third on the team in points with 28 while playing alongside Allie Schwab and Mollie Carroll on Gustavus' potent top line. A two-sport athlete at Gustavus, Cartony was also the leading scorer on the soccer team this season with 12 points on six goals. Amanda currently has 49 points (27G, 22A) in 54 career games.

- First-year forward **Carolyn Draayer (Deephaven, Minn.)** has turned in an impressive season in her inaugural campaign for the Gusties. Draayer started the year on a six-game point-streak and was named Female Student-Athlete of the Month for November. During the first month of the season, the Deephaven, Minn. native tallied nine goals and two assists for 11 points in six games, including three two-goal performances. Draayer is currently the fourth-leading scorer on the team with 18 goals and eight assists for 26 points. Her 0.93 points per game average ranks 10th in the country among rookies, while her six game-winning goals are tied for fourth in the nation. For her efforts, the Minnetonka High School product was named MIAC Honorable Mention and one of seven members on the MIAC All-Rookie Team.

NATIONAL STATISTICS

NCAA DIVISION III TOP FIVE INDIVIDUAL STATISTICS

Points Per Game	Team	Average (Total)
1 Julie Fortier	Norwich	1.89 (53)
2 Jillayne DuBus	Norwich	1.66 (48)
3 Nina Waidacher	St. Scholastica	1.64 (36)
4 Megan Myers	Utica	1.60 (40)
5 Kaycie Anderson	Norwich	1.59 (46)

Goals Per Game	Team	Average (Total)
1 Julie Fortier	Norwich	1.07 (30)
2 Kolbee McCrea	RIT	0.92 (24)
3 Allie Schwab	Gustavus	0.86 (24)
4 Dani Schultz	UW-Superior	0.82 (23)
Nina Waidacher	St. Scholastica	0.82 (18)

Assists Per Game	Team	Average (Total)
1 Sarianne Lynn	Norwich	1.07 (31)
2 Kristina Moss	RIT	0.96 (27)
3 Jillayne DeBus	Norwich	0.93 (27)
Melissa Rundlett	Norwich	0.93 (26)
5 Megan Myers	Utica	0.92 (23)

Power Play Goals	Team	Average (Total)
1 Olivia Rork	Adrian	0.39 (11)
Kourtney Kunichika	RIT	0.39 (11)
3 Kolbee McCrea	RIT	0.38 (10)
Julie Fortier	Norwich	0.36 (10)
5	(three players tied with 9)	

Game Winning Goals	Team	Average (Total)
1 Allie Schwab	Gustavus	8
2 Katie Little	Manhattanville	7
Dani Schultz	UW-Superior	7
4	(five players tied with 6)	

Points Per Game (Defenders)	Team	Average (Total)
1 Sarianne Lynn	Norwich	1.28 (37)
2 Rachel Porter	Salve Regina	1.27 (33)
3 Kristina Moss	RIT	1.18 (33)
4 Breanna Roy	Potsdam	1.16 (29)
5 Amanda Wilks	Norwich	1.07 (30)

Points Per Game (Rookies)	Team	Average (Total)
1 Nina Waidacher	St. Scholastica	1.64 (36)
2 Kaycie Anderson	Norwich	1.59 (46)
3 Breann Julius	Concordia (MN)	1.19 (31)
4 Tyne Gove	Norwich	1.17 (34)
5 Rachel Hennessy	Augsburg	1.12 (28)

Goals Against Average	Team	Average (Total)
1 Ali Binnington	RIT	0.95
2 Laura Chamberlain	RIT	1.10
3 Danielle Justice	Gustavus	1.19
4 Sinead Murphy	Amherst	1.21
5 Kerri Stuart	Amherst	1.30

Save Percentage	Team	Average (Total)
1 Laura Chamberlain	RIT	.948
2 Sinead Murphy	Amherst	.943
Alise Riedel	St. Thomas	.943
4 Ali Binnington	RIT	.942
5 Nicole Jones	Hamline	.940

Winning Percentage	Team	Average (Total)
1 Ali Binnington	RIT	1.000
2 Kelly Fisk	Norwich	.950
Danielle Justice	Gustavus	.950
4 Laura Chamberlain	RIT	.912
5 Melissa Deardorff	UW-River Falls	.810

Shutouts	Team	Average (Total)
1 Kelly Fisk	Norwich	8
2 Sydney Aveson	Plattsburgh	7
3	(four players tied with 6)	



2011-12 GUSTAVUS ADOLPHUS WOMEN'S HOCKEY GAME NOTES

GUSTAVUS' RECORD WHEN...

GAC scores 4 or more goals	18-0-0
GAC scores 3 goals.....	3-0-1
GAC scores 2 or fewer goals.....	2-1-1
GAC scores first.....	22-2-0
Opponent scores first.....	2-0-2
GAC leads after 1st period.....	17-1-0
Opponent leads after 1st period.....	2-0-1
Tied after 1st period.....	5-1-1
GAC leads after 2nd period	20-1-0
Opponent leads after 2nd period.....	0-1-2
Tied after 2nd period	4-0-0
Games decided by one goal	5-0-0
Games decided by two goals	3-0-0
Games decided by three or more.....	16-2-0
GAC scores on the power play.....	18-1-0
GAC scoreless on the power play	7-1-1
GAC scores two or more PP goals.....	10-1-0
GAC outshoots opponent.....	23-2-2
GAC outshot by opponent	0-0-0
Shots equal.....	1-0-0
At home.....	14-0-1
On the road.....	10-2-1
Neutral site.....	0-0-0
Tuesday.....	1-1-1
Thursday.....	1-0-0
Friday	11-0-0
Saturday.....	11-1-1
In November	6-0-0
In December.....	3-0-1
In January	5-1-1
In February	7-1-0
In March.....	3-0-0

2012 MIAC PLAYOFF CHAMPIONS GUSTAVUS ADOLPHUS COLLEGE NINTH-STRAIGHT LEAGUE TITLE



GAME NOTES

- Junior defender **Kelsey Kennedy** (Eagan, Minn.) received Honorable Mention All-Conference for the second time in her three-year career. The Eagan, Minn. native has been a staple on Gustavus' defense with a great deal of work done assisting goals. Kennedy ranks second on the team with 21 assists this year and holds the squad's best rating at +37. Kennedy has recorded a multiple-assist game six times, including a hat-trick in assists against Saint Benedict on Nov. 24-25. Throughout her career, the blueliner has tallied 41 career points, 38 of which are assists. Kennedy is an international management major who has played in all 28 games this season.

ROARING TWENTIES... With 24 victories this season, Gustavus has reached the 20-win plateau for the ninth-consecutive season and 11th time in the 15-year history of the program. One more victory would tie the program record for wins in a season (25, three times). The Gusties' .893 winning percentage this season is tied for the program record.

HARD TO THE NET... Senior forward **Allie Schwab** (Stillwater, Minn.) has consistently led the Gusties and the MIAC in point-scoring this season. The MIAC Player of the Year has accumulated 24 goals and 19 assists for 41 points on the year - all career highs. Her 43 points are the most scored by a Gustie since four-time MIAC Player of the Year Andrea Peterson tallied 48 (14G, 33A) in the 2005-06 season. Kelly Crandall scored 47 (14G, 33A) the same year.

As a team, the Gusties have scored 131 goals this season, the most since the 2006-07 squad tallied 134. In the women's hockey team's 15-year history, the Gusties have accumulated 1,926 goals, averaging 128.4 per season. The program record for most goals scored in a season is 172 set during the 1999-2000 campaign.

SHOTS, SHOTS, SHOTS... Gustavus has outshot its opponents 1138-to-458 and have not been outshot in 28 games this season. The closest an opponent has come to outshooting the Gusties was on Jan. 7 when the University of Wisconsin-Stevens Point matched Gustavus' shot total of 24. The most shots accumulated in one game by the Black and Gold this season occurred on Dec. 3 in a 7-2 victory against Augsburg. The Gusties outshot the Auggies 64-to-8 in the game and 114-to-14 in the two-game series. The last time the Gustie women lost the shots on goal battle was on March 11, 2011 against No. 2 UW-River Falls in first round action of the NCAA Tournament. The Falcons registered 25 shots to Gustavus' 20, but the Gusties prevailed 4-1.

ON THE DOTS... The Three Crowns have done an excellent job of winning the possession battle after face-offs. Gustavus has won 936-of-1379 faceoffs for a .679-percent rate. Allie Schwab leads the team with 357-of-527 faceoffs (.677). Grace Olson leads the squad in faceoff percentage (.713) among players with at least 100 attempts, while Meagan Wanecke and Carolyn Draayer have both collected at least 188 victories on the dots. Wanecke at 217-for-314 (.691) and Draayer at 188-for-284 (.662).

FROM THE LAND OF SKY BLUE WATERS... The 2011-12 Gustavus roster includes 26 players, 23 of whom are natives of Minnesota. There are also two Minnesota high schools that have produced three Gustie hockey players each - Hill-Murray and Stillwater. Marissa Brandt, Melissa Doyle and Jess Haren are graduates of Hill-Murray, while Amanda Cartony, Allie Schwab and Marah Sobczak all hail from Stillwater.

GUSTIES HIGHLIGHT MIAC POST-SEASON AWARDS... After the regular season came to a close, the Minnesota Intercollegiate Athletic Conference (MIAC) awarded four Gusties to its All-Conference Team. High-



2011-12 GUSTAVUS ADOLPHUS WOMEN'S HOCKEY GAME NOTES

GAME NOTES

lighting the conference's post-season awards was senior forward Allie Schwab who was named MIAC Player-of-the-Year. Senior Mollie Carroll, sophomore Amanda Cartony and junior Lindsey Hjelm were also named All-Conference.

First-year forward Carolyn Draayer made the All-Rookie Team and Honorable Mention, while senior goalie Danielle Justice and junior defender Kelsey Kennedy joined Draayer as Honorable Mention selections. Justice was also tabbed as Gustavus' representative on the All-MIAC Sportsmanship Team.

NCAA DIVISION III CHAMPIONSHIP HISTORY... For the first time in the 11-year history of the Division III Women's Ice Hockey Championships, the national tournament field included eight teams. The national tournament began in 2002 with six teams in the field and there has been seven teams included in the tourney since 2003. Gustavus has made it to the national playoffs a record ten times, including eight consecutive appearance - the longest streak in Division III women's hockey. Middlebury has also made it to the NCAA tourney ten times, twice in the last three years. Middlebury holds the record for most titles with three, all occurring in consecutive seasons (2004, 2005, 2006).

HISTORY FAVORS NORWICH... Since the beginning of the NCAA Division III Women's Hockey Championships, there has always been a back-to-back champion. Elmira won the inaugural title in 2002 and defended its title in 2003. Middlebury claimed the title in 2004, 2005 and 2006. After Middlebury's three-year reign, Plattsburgh State achieved the national championship in 2007 and 2008. Amherst jumped into the spotlight with titles in 2009 and 2010, while Norwich garnered its first crown last season. Norwich will begin its road to the title the same way as last year with a semifinal match-up against Gustavus.

IT'S HOW YOU FINISH... The Gusties have been known to make a splash late in the season, in the MIAC Playoffs and the NCAA Tournament. Under the direction of 13-year head coach Mike Carroll, the Gusties typically play their best hockey after Christmas break. This season has not fit the mold solely for the fact that the Gusties posted their best start to a season in program history.

YEAR	BEFORE	AFTER
1999-00	6-3-0 (.667)	12-7-1 (.625)
2000-01	6-2-0 (.750)	17-5-1 (.761)
2001-02	6-1-1 (.813)	17-4-1 (.795)
2002-03	4-4-2 (.500)	10-5-2 (.647)
2003-04	5-3-0 (.625)	17-3-0 (.850)
2004-05	7-0-1 (.938)	18-4-0 (.818)
2005-06	8-1-1 (.850)	14-4-1 (.763)
2006-07	8-1-0 (.889)	17-2-0 (.895)
2007-08	9-1-0 (.900)	16-2-0 (.889)
2008-09	6-1-1 (.813)	16-1-1 (.917)
2009-10	3-3-2 (.500)	19-3-0 (.864)
2010-11	7-2-0 (.778)	15-3-3 (.786)
2011-12	8-0-1 (.944)	16-2-1 (.868)
TOTALS	83-22-9 (.768)	204-44-11 (.809)

RACKIN' UP THE POINTS... To date, Gustavus has tallied 302 points on 131 goals and 171 assists. The Three Crowns have one player in the 40-point range, one in the 30-point range, four in the 20-point range and a total of 12 players in double-digit scoring. This season's point total is the most since the 2006-07 campaign when the Gusties registered 318 points.

CHAMPIONSHIP HISTORY

NCAA DIVISION III WOMEN'S HOCKEY CHAMPIONSHIP HISTORY

2002 - Host Institution: Elmira

Field: Bowdoin, Elmira, Gustavus, Manhattanville, Middlebury, Saint Mary's

1st.....Elmira
2nd.....Manhattanville
3rd.....Gustavus

2003 - Host Institution: Elmira

Field: Bowdoin, Elmira, Manhattanville, Middlebury, UW-River Falls, St. Thomas, Williams

1st.....Elmira
2nd.....Manhattanville
3rd.....Bowdoin

2004 - Host Institution: Middlebury

Field: Bowdoin, Elmira, Gustavus, Manhattanville, Middlebury, Plattsburgh State, UW-Stevens Point

1st.....Middlebury
2nd.....UW-Stevens Point
3rd.....Plattsburgh State

2005 - Host Institution: Elmira

Field: Bowdoin, Elmira, Gustavus, Manhattanville, Middlebury, Plattsburgh State, UW-Stevens Point

1st.....Middlebury
2nd.....Elmira
3rd.....Gustavus

2006 - Host Institution: Plattsburgh State

Field: Elmira, Gustavus, Manhattanville, Middlebury, Plattsburgh State, UW-Stevens Point, UW-Superior

1st.....Middlebury
2nd.....Plattsburgh State
3rd.....UW-Stevens Point

2007 - Host Institution: Plattsburgh State

Field: Amherst, Gustavus, Manhattanville, Middlebury, Plattsburgh State, Rochester Institute of Technology, UW-Stevens Point

1st.....Plattsburgh State
2nd.....Middlebury
3rd.....UW-Stevens Point

2008 - Host Institution: Plattsburgh State

Field: Amherst, Elmira, Gustavus, Manhattanville, Middlebury, Plattsburgh State, UW-Superior

1st.....Plattsburgh State
2nd.....Manhattanville
3rd.....Elmira

2009 - Host Institution: Middlebury

Field: Amherst, Elmira, Gustavus, Middlebury, Norwich, Plattsburgh State, UW-River Falls

1st.....Amherst
2nd.....Elmira
3rd.....Middlebury

2010 - Host Institution: Gustavus

Field: Amherst, Elmira, Gustavus, Norwich, Plattsburgh State, Trinity, UW-River Falls

1st.....Amherst
2nd.....Norwich
3rd.....Elmira

2011 - Host Institution: Rochester Institute of Technology

Field: Adrian, Gustavus, Manhattanville, Middlebury, Norwich, Rochester Institute of Technology, UW-River Falls

1st.....Norwich
2nd.....RIT
3rd.....Middlebury



2011-12 GUSTAVUS ADOLPHUS WOMEN'S HOCKEY GAME NOTES

2012 NCAA DIVISION III WOMEN'S ICE HOCKEY CHAMPIONSHIP

FIRST ROUND

March 10

SEMIFINALS

March 16
Rochester, N.Y.

FINAL

March 17
Rochester, N.Y.

* Rochester Inst. - 5

Concordia (Moorhead) - 2

* Middlebury - 2

Plattsburgh State - 4

* Gustavus Adolphus - 4

Univ. of Wis., River Falls - 2

Amherst - 0

* Norwich - 5

Rochester Inst.

3:30 p.m. EST

Plattsburgh State

7:00 p.m. EST

Gustavus Adolphus

7:00 p.m. EST

Norwich

**NATIONAL
CHAMPION**

* Host Institution

THIRD PLACE

March 17
3:30 p.m. EST



2012 ICE HOCKEY CHAMPIONSHIP

DIVISION III

WWW.GUSTAVUS.EDU/ATHLETICS/WHKY



2011-12 GUSTAVUS ADOLPHUS WOMEN'S HOCKEY GAME NOTES

2011-12 INDIVIDUAL GAME HIGHS/PROFILES



No. 1

Danielle Justice

Fewest Goals: 0 (6x), 3/1/12 vs. Bethel
Most Saves: 24 (2x), 3/10/12 vs. UW-River Falls
Most Minutes: 66:25, 3/1/12 vs. Bethel
Winning-Streak: 6

Senior, goaltender...Alexandria, Minnesota...Started in 21 games...Is 18-0-2 in 1205:02 minutes... Made 307 saves, allowed 24 goals...Carries a 1.19 goals against average (3rd/NCAA) and a 9.27 save percentage (21st/NCAA)... Has recorded four shutouts (7th/NCAA)...Member of the 2008-09 MIAC All-Rookie Team...Honorable Mention All-Conference twice in 2010-11 and 2011-12...Holds every Gustavus goalie record... Environmental studies and economics double major.

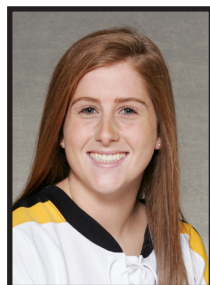


No. 4

Maddie Bergh

Goals: 0
Assists: 3, 1/7/12 vs. UW-Stevens Point
Points: 3, 1/7/12 vs. UW-Stevens Point
Plus/Minus: +3, 2/17/12 vs. St. Olaf
PIM: 2, (5x) last 3/3/12 vs. Concordia
Shots On Goal: 7, 12/3/11 vs. Augsburg

Sophomore, defender...Eden Prairie, Minnesota...Played in all 28 games...Has 14 assists...Carries a rating of +22...Has logged five penalties for 10 minutes...Recorded a multiple-assist game on three occasions...Ranks second among defenders in shots with 65 (2.32 shots per game)...Member of the 2010-11 MIAC All-Rookie Team... Public accounting major.

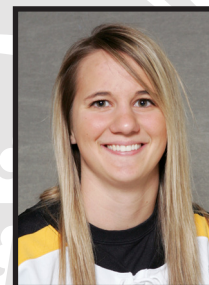


No. 2

Meagan Wanecke

Goals: 2, 2/24/12 vs. Saint Benedict
Assists: 2, 2/24/12 vs. Saint Benedict
Points: 4, 2/24/12 vs. Saint Benedict
Plus/Minus: +2 (3x), last 2/11/12 vs. Saint Mary's
PIM: 2 (7x), 3/1/12 vs. Bethel
Shots On Goal: 3, vs. 12/2/11 vs. Augsburg

Junior, forward...Delafield, Wisconsin...Played in all 28 games... Has eight goals and seven assists for 15 points...Has scored a team-high two short-handed goals...Has one game-winning goal and one power play goal...Logged seven penalties for 14 minutes...Carries a rating of +10...Ranks fifth on the team in shots with 75 (2.68 shots per game)...Has a face-off win percentage of .691 (2nd/Team)... Management and sociology & anthropology double major.



No. 5

Jenna Christensen

Goals: 1 (7x), last 3/3/12 vs. Concordia
Assists: 1 (5x), 2/24/12 vs. Saint Benedict
Points: 2, 2/24/12 vs. Saint Benedict
Plus/Minus: +3 (3x), last 1/20/12 vs. St. Kate's
PIM: 2 (4x), last 2/18/12 vs. St. Olaf
Shots On Goal: 6, 12/2/11 vs. Augsburg

Junior, forward...Albert Lea, Minnesota...Assistant Captain...Played in all 28 games...Has seven goals and five assists for 12 points... Carries a rating of +20...Has logged four penalties for eight minutes...Management major.



No. 3

Gina DeNucci

Goals: 1, 1/18/11 vs. St. Thomas
Assists: 1, 11/12/11 vs. vs. Bethel
Points: 1 (2x), last 1/18/11 vs. St. Thomas
Plus/Minus: +3, 12/2/11 vs. Augsburg
PIM: 2, 2/18/12 vs. St. Olaf
Shots On Goal: 3 (4x), 2/11/12 vs. Saint Mary's

Senior, forward...Chanhassen, Minnesota...Played in 21 games... Has one goal and one assist for two points...Carries a rating of +7...Recorded three penalties for six minutes...Played in 90 career games, scoring 14 points (4G, 10A)...Involved in Sociology & Anthropology major.



No. 6

Whitney Schaff

Goals: 0
Assists: 0
Points: 0
Plus/Minus: 0 (2x), last 11/18/11 vs. St. Thomas
PIM: 0
Shots On Goal: 1, 11/18/11 vs. St. Thomas

Senior, forward...Cambridge, Minnesota...Played in 18 games... Has three assists...Carries a rating of +5...Recorded three penalties for six minutes...Played in 100 games over four-year career at Gustavus...Biology major.



2011-12 GUSTAVUS ADOLPHUS WOMEN'S HOCKEY GAME NOTES

2011-12 INDIVIDUAL GAME HIGHS/PROFILES



No. 7

Beth Olson

Goals: 0

Assists: 1, 1/20/12 vs. St. Catherine

Points: 1, 1/20/12 vs. St. Catherine

Plus/Minus: +1, 1/20/12 vs. St. Catherine

PIM: 2 (3x), last 3/3/12 vs. Concordia

Shots On Goal: 2, 1/20/12 vs. St. Catherine

First-year, defender...Warroad, Minnesota...Played in nine games... has one assist...recorded three penalties for six minutes... Undeclared major.



No. 10

Courtney Boucher

Goals: 2, 11/5/11 vs. St. Norbert

Assists: 2, 12/2/11 vs. Augsburg

Points: 3, 12/2/11 vs. Augsburg

Plus/Minus: +2 (3x), last 1/20/12 vs. St. Catherine

PIM: 2 (5x), last 3/10/12 vs. UW-River Falls

Shots On Goal: 9, 2/4/12 vs. Hamline

First-year, forward...Hastings, Minnesota...Played in all 28 games... Has seven goals and 10 assists for 17 points...Second-leading scoring first-year player on the team...Scored three game-winning goals...Ranks fourth on the team in shots with 92...Averages 3.29 shots per game...Carries a rating of +8...Tallied five penalties for 10 minutes...Undeclared major.



No. 8

Mollie Carroll

Goals: 2 (3x), last 3/3/12 vs. Concordia

Assists: 3 (2x), last 2/25/12 vs. Saint Benedict

Points: 3 (6x), last 2/25/12 vs. Saint Benedict

Plus/Minus: +3 (5x), last 2/10/12 vs. Saint Mary's

PIM: 5, 11/4/11 vs. Concordia (Wis.)

Shots On Goal: 5 (5x), last 3/12/12 vs.

Concordia

Senior, forward...Eagan, Minnesota...Captain...Played in all 28 games...Has 16 goals and 22 assists for 38 points (2nd/Team)... Recorded a multiple goal game three times, and a multiple assist game five times this season...Leads the team in assists with 22...2011-12 All-Conference...Has scored four power play goals, one short-handed, and one game-winner this season...Carries a rating of +31 (3rd/Team)...Logged three penalties for nine minutes...Named MIAC Athlete-of-the-Week twice on 11/14 and 3/5...Became 21st player in Gustavus hockey history to play in 100 games (108 gp currently)...Public accounting major.



No. 11

Jess Harren

Goals: 1 (4x), last 2/3/12 vs. Hamline

Assists: 1 (5x), last 2/25/12 vs. Saint Benedict

Points: 1 (9x), last 2/25/12 vs. Saint Benedict

Plus/Minus: +4, 1/20/12 vs. St. Catherine

PIM: 2 (3x), last 2/18/12 vs. St. Olaf

Shots On Goal: 3, 1/31/12 vs. UW-Superior

Junior, defender...Woodbury, Minnesota...Assistant Captain...Played in 25 games...Has four goals and five assists for nine points...Carries a rating of +12...recorded three penalties for six minutes...Scored one power play goal (2/3 vs. Hamline)...Economics major.



No. 9

Amanda Cartony

Goals: 2 (2x), last 2/25/12 vs. Saint Benedict

Assists: 2 (2x), last 1/20/12 vs. St. Catherine

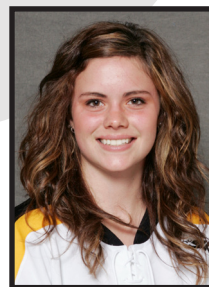
Points: 3 (4x), last 2/25/12 vs. Saint Benedict

Plus/Minus: +3 (2x), last 2/10/12 vs. Saint Mary's

PIM: 4, 3/10/12 vs. UW-River Falls

Shots On Goal: 6 (2x), last 2/3/12 vs. Hamline

Sophomore, forward...Stillwater, Minnesota...Played in 26 games... has 14 goals and 14 assists for 28 points (3rd/Team)...Scored five power play goals and one short-handed...2011-12 All-Conference...Named MIAC Athlete-of-the-Week on Feb. 27... February Gustavus Student-Athlete of the Month...Led Gustavus women's soccer team in scoring with six goals this season...Has a shooting percentage of 2.15...Carries a rating of +20...Recorded five penalties for 10 minutes...Undeclared major.



No. 12

Taylor Skelton

Goals: 0

Assists: 1, 11/12/11 vs. Bethel

Points: 1, 11/12/11 vs. Bethel

Plus/Minus: +1, 12/6/11 vs. UW-River Falls

PIM: 2 (2x), last 2/3/12 vs. Hamline

Shots On Goal: 3, 11/12/11 vs. Bethel

First-year, forward...Ely, Minnesota...Played in nine games...Has one assist...Recorded two penalties for four minutes...Carries a rating of +1...Undeclared major.



2011-12 GUSTAVUS ADOLPHUS WOMEN'S HOCKEY GAME NOTES

2011-12 INDIVIDUAL GAME HIGHS/PROFILES

**No. 13**

Emily Raber

Goals: 0

Assists: 0

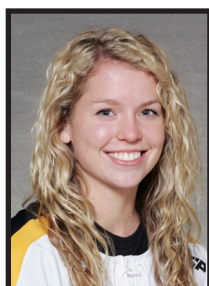
Points: 0

Plus/Minus: 0, 2/25/12 vs. Saint Benedict

PIM: 2, 2/4/12 vs. Hamline

Shots On Goal: 1, 2/4/12 vs. Hamline

First-year, defender...Buena Park, California...Played in three games...Recorded one shot...Tallied one penalty for two minutes...Undeclared major.

**No. 16**

Kelsey Kennedy

Goals: 1, 12/3/11 vs. Augsburg

Assists: 3 (3x), last 2/25/12 vs. Saint Benedict

Points: 3 (3x), last 2/25/12 vs. Saint Benedict

Plus/Minus: +4 (2x), 12/2/11 vs. Augsburg

PIM: 2 (4x), 2/11/12 vs. Saint Mary's

Shots On Goal: 6, 12/3/12 vs. Augsburg

Junior, defender...Eagan, Minnesota...Played in all 28 games...Has one goal and 21 assists for 22 points...Ranks second among team in defender scoring...Ranks second on team in assists...0.79 ppg average ranks 11th in nation among defenders...Leads team with rating of +37...Two-Time All-MIAC Honorable Mention...Recorded four penalties for eight minutes...Scored game-winning goal against Augsburg on the power play on Dec. 3...International management major.

**No. 14**

Melissa Doyle

Goals: 1 (3x), last 2/17/12 vs. St. Olaf

Assists: 1 (3x), last 2/11/12 vs. Saint Mary's

Points: 2, 11/4/11 vs. Concordia (Wis.)

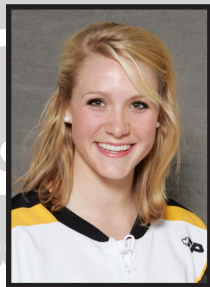
Plus/Minus: +2 (3x), last 2/24/12 vs. Saint Benedict

PIM: 2, 1/31/12 vs. UW-Superior

Shots On Goal: 7, 11/4/11 vs. Concordia

(Wis.)

Sophomore, forward...White Bear Lake, Minnesota...Played in all 28 games...Has three goals and three assists for six points...Carries a rating of +11...Recorded just one penalty for two minutes...Scored game-winning goal against St. Olaf on Feb. 17...Biology major.

**No. 17**

Lindsey Hjelm

Goals: 2, 11/11/11 vs. Bethel

Assists: 3, 2/11/12 vs. Saint Mary's

Points: 3 (2x), last 2/11/12 vs. Saint Mary's

Plus/Minus: +4, 11/12/11 vs. Bethel

PIM: 6 (3x), last 3/10/12 vs. UW-River Falls

Shots On Goal: 9, 2/25/12 vs. Saint Benedict

Junior, defender...North Oaks, Minnesota...Assistant Captain...Played in all 28 games...Has nine goals and 14 assists for 23 points (5th/Team)...Ranks second in MIAC and ninth in the nation in scoring average among defenders at 0.82 ppg...Ranks third on the team in power play points (11)...Scored four power play goals, one empty-netter, and one game-winner...Three-time All-Conference...2009-10 MIAC All-Rookie Team...Carries a rating of +27 (4th/Team)...Ranks second on the team in shots with 134 (4.79 spg)...Has a league-high 29 penalties for 58 minutes...Biology major.

**No. 15**

Leah Johnson

Goals: 1, last 2/25/12 vs. Saint Benedict

Assists: 1, 11/12/11 vs. Bethel

Points: 2, 11/12/11 vs. Bethel

Plus/Minus: +1 (3x), last 2/10/12 vs. Saint Mary's

PIM: 2 (2x), last 2/4/12 vs. Hamline

Shots On Goal: 3 (6x), last 2/10/12 vs. Saint

Mary's

First-year, forward...Chanhassen, Minnesota...Played in 16 games...Has four goals and one assist for five points...Scored one power play goal...Recorded two penalties for four minutes...Carries a rating of +2...Scored a goal and an assist in first collegiate game against Bethel on Nov. 12th...Undeclared major.

**No. 18**

Carolyn Draayer

Goals: 2 (4x), 1/20/12 vs. St. Catherine

Assists: 2, 2/24/12 vs. Saint Benedict

Points: 3, 11/4/11 vs. Concordia (Wis.)

Plus/Minus: +2 (3x), last 1/20/12 vs. St. Catherine

PIM: 2 (2x), last 1/21/12 vs. St. Catherine

Shots On Goal: 8 (2x), 12/13/11 UW-Superior

First-year, forward...Deephaven, Minnesota...Played in all 28 games...Has 18 goals and eight assists for 26 points (4th/Team)...Leads the team and ranks second in the league in first-year scoring (10th/NCAA)...Ranks second on the team in goals...Scored six game-winning goals and five power play goals...Gustavus November Student-Athlete of the Month...2011-12 MIAC All-Rookie Team...Has a .662 face-off win percentage...Undeclared major.



2011-12 GUSTAVUS ADOLPHUS WOMEN'S HOCKEY GAME NOTES

2011-12 INDIVIDUAL GAME HIGHS/PROFILES



No. 19

Kelly Thotland

Goals: 1 (5x), last 2/25/12 vs. Saint Benedict
Assists: 2 (2x), last 1/7/12 vs. UW Steves Point
Points: 2 (4x), last 2/25/12 vs. Saint Benedict
Plus/Minus: +3 (2x), last 1/20/12 vs. St. Catherine
PIM: 2 (8x), last 3/1/12 vs. Bethel
Shots On Goal: 5, 2/25/12 vs. Saint Benedict

First-year, defender...Edina, Minnesota...Played in all 28 games...Has five goals and eight assists for 13 points...Registered 62 shots for an average of 2.21 shots per game...Four of her five goals have come on the power play...Recorded eight penalties for 16 minutes...Carries a rating of +13...Undeclared major.



No. 22

Marissa Brandt

Goals: 1 (5x), last 2/24/12 vs. Saint Benedict
Assists: 2, 2/10/12 vs. Saint Mary's
Points: 2, 2/10/12 vs. Saint Mary's
Plus/Minus: +2 (3x), last 2/24/12 vs. Saint Benedict
PIM: 2, 1/27/12 vs. Concordia
Shots On Goal: 3 (2x), last 2/17/12 vs. St. Olaf

First-year, forward...Vadnais Heights, Minnesota...Played in 27 games...Has five goals and six assists for 11 points...Scored two power play goals...Recorded one penalty for two minutes...Carries a rating of +6...Scored first collegiate goal in first collegiate game on Nov. 4th against Concordia (Wis.)...Undeclared major.



No. 20

Grace Olson

Goals: 1 (3x), last 2/24/12 vs. Saint Benedict
Assists: 1 (3x), last 1/20/12 vs. St. Catherine
Points: 1 (6x), last 2/24/12 vs. Saint Benedict
Plus/Minus: +2, 1/20/12 vs. St. Catherine
PIM: 2, 1/7/12 vs. UW-Stevens Point
Shots On Goal: 3, 11/19/11 vs. St. Thomas

Senior, forward/defense...Apple Valley, Minnesota...Played in 23 games...Has three goals and three assists for six points...Has one power play goal...Holds best face-off win percentage on the team among those with over 100 draws at .713 (102-41)...Carries a rating of +8...Recorded one penalty for two minutes...Played in 99 career games...Biology major.



No. 23

Kayla Ingbreton

Goals: 1 (2x), last 12/2/11 vs. Augsburg
Assists: 2, 12/2/11 vs. Augsburg
Points: 3, 12/2/11 vs. Augsburg
Plus/Minus: +2, 12/2/11 vs. Augsburg
PIM: 2 (2x), last 2/24/12 vs. Saint Benedict
Shots On Goal: 3, 12/2/11 vs. Augsburg

Junior, forward...Mound, Minnesota...Played in 19 games...has two goals and four assists...Scored one power play goal...Recorded two penalties for four minutes...Carries a rating of +7...Voted Most Inspirational by team following 2010-11 season...Health fitness major.



No. 21

Allie Schwab

Goals: 4, 12/2/11 vs. Augsburg
Assists: 3, 11/5/11 vs. St. Norbert
Points: 5, 12/2/11 vs. Augsburg
Plus/Minus: +3 (5x), last 2/10/12 vs. Saint Mary's
PIM: 4 (3x), last 2/24/12 vs. Saint Benedict
Shots On Goal: 9, 2/17/12 vs. St. Olaf

Senior, Forward...Stillwater, Minnesota...Played in all 28 games...Lead MIAC and is fourth in NCAA Division III in points at 43...Scored 24 goals (2nd/NCAA) and 19 assists...Has eight power play goals and eight game-winning goals...Carries a +34 rating (2nd/Team...Recorded 13 penalties for 26 minutes...Has three hat tricks this season...Leads the team in face-off wins with 357 (.677 win%)...Named 2011-12 MIAC Player-of-the-Year...Two-time All-Conference performer (2009-10 & 2011-12)...All-MIAC Honorable Mention (2008-09 & 2010-11)...Member of 2008-09 All-Rookie Team...Ranks third in Gustavus history in goals scored with 70...Played in all 116 games of collegiate career, scoring 112 points (70G, 52A)...Nursing major.



No. 24

Heidi Korin

Goals: 0
Assists: 0
Points: 0
Plus/Minus: +2, 11/4/11 vs. Concordia (Wis.)
PIM: 2 (2x), last 11/5/11 vs. St. Norbert
Shots On Goal: 3, 11/4/11 vs. Concordia (Wis.)

Junior, forward...Corcoran, Minnesota...Played in two games...Logged two penalties for four minutes...Carries a +2 rating...Sidelined due to injury since early November...Undeclared major.



2011-12 GUSTAVUS ADOLPHUS WOMEN'S HOCKEY GAME NOTES

2011-12 INDIVIDUAL GAME HIGHS/PROFILES



No. 30

Katherine Jorgenson

Fewest Goals: 1, 12/3/11 vs. Augsburg

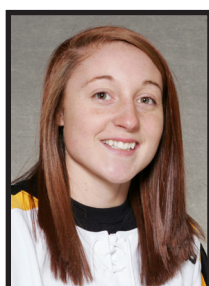
Most Saves: 0

Most Minutes: 20:00, 12/3/11 vs. Augsburg

Winning-Streak: 0

Sophomore, goaltender...Colleyville, Texas...
Played 20-minutes in net...Allowed one goal...

Biochemistry and molecular biology major.



No. 35

Marah Sobczak

Fewest Goals: 0 (6x), 3/1/12 vs. Bethel

Most Saves: 24 (2x), 3/10/12 vs. UW-River Falls

Most Minutes: 66:25, 3/1/12 vs. Bethel

Winning-Streak: 6

Sophomore, goaltender...Lake Elmo, Minnesota...Started in seven games...Is 6-2-0 in 473:21 minutes...Made 109 saves, allowed 16 goals...Has an .872 save percentage and a 2.03 goals against average...Recorded two shutouts...Physics major.

THE CARROLL FILE

MIKE CARROLL'S COACHING RECORD

Year	Overall	MIAC	Finish
1999-00	18-10-1	12-5-1	3rd
2000-01	23-6-1	16-2-0	1st
2001-02	23-5-2	18-0-1	1st
2002-03	14-9-4	11-4-3	3rd
2003-04	22-6-0	16-2-0	2nd
2004-05	25-4-1	17-1-0	1st
2005-06	22-5-2	17-0-1	1st
2006-07	25-3-0	17-1-0	1st
2007-08	25-3-0	18-0-0	1st
2008-09	22-2-4	16-0-2	1st
2009-10	22-6-2	14-3-1	1st
2010-11	22-5-3	14-2-2	1st
2011-12	24-2-2	16-1-1	1st
TOTALS	288-66-22	202-21-4	

CARROLL'S RESUME



Years at Gustavus: 13

NCAA Appearances: 10

MIAC Titles: 10

MIAC Coach of the Year: (5)

2001-02, 2003-04, 2004-05, 2005-06, 2010-11

MEET THE GUSTAVUS COACHING STAFF... Mike Carroll is in his 13th season as the head women's hockey coach at Gustavus. He has compiled an overall record of 288-66-22 in 13 seasons on the bench and has the second most coaching victories among Division III active and all-time coaches.

Last season, Carroll directed the Gusties to a record of 22-5-3 overall and first place finish in the MIAC with a conference record of 14-2-2. The Gusties won the conference championship for the seventh consecutive season and were also the MIAC Playoff Champions for the eighth straight season. The Gusties advanced to the NCAA National Tournament for the ninth time in 11 years before losing to Middlebury in the third place game.

Carroll has directed the Gusties to ten MIAC regular season titles (2000-01, 2001-02, 2004-05, 2005-06, 2006-07, 2007-08, 2008-09, 2009-10, 2010-11, 2011-12) and has been named the MIAC Coach of the Year five times (2001-02, 2003-04, 2004-05, 2005-06, 2010-11). In addition to coaching 27 players being named all-conference 51 times and four MIAC Players of the Year, Carroll has worked with nine players who earned All-America accolades 14 times and two American Hockey Coaches Association Players of the Year, including four-time MIAC Player of the Year and four-time All-American Andrea Peterson.

Prior to coming to Gustavus, Carroll served as the head boys' hockey coach at Mankato West High School from 1991 to 1999. Carroll's college coaching resume included a stint as head men's hockey coach at Fergus Falls Community College from 1986 to 1987 as well as a season as the assistant men's coach at the University of St. Thomas in 1983.

Carroll, an Edina, Minn. native, competed in hockey and baseball at Mankato State. After graduating with a degree in municipal recreation in 1982, Carroll played professional baseball in the Montreal Expos organization for two years.

In addition to his hockey coaching duties at Gustavus, Carroll is also the head coach of the Golden Gustie baseball team. Mike and his wife, Terri, live in North Mankato and have two sons, Matt and Mike.

Steve Carroll is in his 12th season as an assistant coach with the Gusties. His responsibilities include helping recruit student-athletes and developing Gustavus goalies. Carroll has 25 years of goalie coaching experience and is regarded as one of the top goalie instructors in the Midwest. Steve also serves as goalie coach-in-chief for USA Hockey's Minnesota District. He has his own goalie school and each year coaches hundreds of boys and girls of all skill levels.

An Edina, Minn. native, Carroll was a two-time All-America goalie for Minnesota State University, Mankato and led the Mavericks to the 1980 NCAA Division II National Championship, where he was named the tournament's MVP. He was a top-10 finalist for the Hobey Baker Award, presented annually to the best player in men's college hockey. Carroll was also named MSU's Male Athlete of the Century and has been inducted into the school's Athletic Hall of Fame.

Kirstin Peterson is in her first season as an assistant coach for the Gustavus women's hockey team. Peterson, a 2011 graduate of the Gustavus, was a four-year staple on defense for the Golden Gusties from 2007 to 2011. She totaled 75 (16G 59A) career points, ranking third all-time among defenders at Gustavus. Peterson earned All-MIAC honors in all four seasons and All-America honors in 2009, 2010, and 2011. The Gustavus women's hockey team went 91-16-9 overall and 62-5-5 in the MIAC, winning four MIAC Championships and four MIAC Playoff titles during Peterson's tenure as a player. The blueliner was an Assistant Captain in the 2009-10 season and a Co-Captain in 2010-11. She played in all 116 games of her college career, setting a new games played mark in the Gustavus record books.

Kirstin is a native of St. Paul and a 2007 graduate of Hill-Murray School where she competed in both hockey and softball. She has previously worked as a counselor at the Gustavus Hockey Summer Camp and a shooter at the Steve Carroll Goalie School. Along with her duties to team, Peterson will serve as the director of club sports at Gustavus.



2011-12 GUSTAVUS ADOLPHUS WOMEN'S HOCKEY GAME NOTES

THE LAST TIME IT HAPPENED...

COMEBACKS

GAC won when trailing after two periods
Nov. 22, 2008 vs. St. Olaf. Gusties scored three in the third to win 4-2.

Opponent won when trailing after two periods

Feb. 18, 2012 at St. Olaf. Oles trailed 2-1 after two, but scored four goals in the third.

Overcame 1-goal deficit and won

GAC: March 10, 2012 vs. UW-River Falls (NCAA 1st Round). Gusties trailed 1-0 after the 1st, but scored three unanswered goals en route to a 4-2 victory.

OPP: Jan. 28, 2011 at St. Catherine. St. Kate's replied with two in the first for a 2-1 win.

Overcame 2-goal deficit and won

GAC: Nov. 17, 2006 vs. Concordia. GAC answered with a goal in the second and two in the third for a 3-2 victory.

OPP: Feb. 18, 2012 at St. Olaf. Oles trailed 2-1 after two, but scored four goals in the third.

Overcame a 3-goal deficit and won

GAC: March 1, 1998 vs. University of Minnesota Club. Gusties scored one in the second and three in the third to win 4-3.

OPP: Never

OVERTIME GAMES

Won overtime game

GAC: March 1, 2012. Gusties defeat Bethel 1-0 in MIAC Semifinals.

OPP: Nov. 7, 2008 at Adrian 2-1.

Tied overtime game

Jan. 28, 2012 at Concordia 3-3.

SERIES SWEEPS

Swept a 2-game regular season home and away series

GAC: Feb. 24-25, 2012 vs Saint Ben's. (7-2 at St. Cloud, 9-1 at St. Peter)

OPP: Nov. 21-22, 2003 vs. St. Thomas. (3-1 at St. Paul, 4-2 at St. Peter)

Swept a 2-game regular season home series

GAC: Feb. 13-14, 2009 vs. Concordia. (7-0, 5-0)

OPP: Never

Swept a 2-game regular season away series

GAC: Jan. 6-7, 2012 at UW-Stevens Point. (6-0, 5-2)

OPP: Never. (MIAC Playoffs: March 10-11, 2000 at Augsburg. (4-1, 2-1)

SHUTOUTS

Last Shutout

GAC: March 1, 2012. Gusties defeat Bethel 1-0 in MIAC Semifinals.

OPP: Dec. 3, 2010 at St. Thomas 1-0.

Last Shutout in St. Peter

GAC: March 1, 2012. Gusties defeat Bethel 1-0 in MIAC Semifinals.

OPP: March 19, 2010 vs. Amherst 4-0.

Last Road Shutout

GAC: Jan. 6, 2012 at UW-Stevens Point 6-0.

OPP: Dec. 3, 2010 at St. Thomas 1-0.

Scoreless Ties (2 in program history)

Jan. 14, 2010 vs. Trinity (Conn.)

Feb. 17, 2009 at UW-Stevens Point

EXTRA ATTACKER GOALS

GAC: March 18, 2011 vs.

Norwich (NCAA Semifinals, Rochester, N.Y.). Jenna Christensen scored in final minute of a 5-4 loss.

OPP: Jan. 9, 2005 at UW-River Falls. Gusties won 6-4.

SHORTHANDED GOALS

Scored a shorthanded goal

GAC: Dec. 2, 2011 vs. Augsburg. Mollie Carroll scored during an AUG power play. Gusties 9-0 win.

OPP: Nov. 19, 2011 at St.

Thomas. Christina Rozeske scored SH in second period. Gusties 3-2 win.

Scored two shorthanded goals

GAC: Nov. 22, 2008 at St. Olaf. Melissa Mackley scored two short-handed goals in the third period. Gusties won 4-2.

OPP: Never.

EMPTY NET GOALS

GAC: Jan. 27, 2012 at Concordia. Amanda Cartony scored EN with :30 left. GA 4-1 win.

OPP: Feb. 18, 2012 at St. Olaf. Oles scored EN with :04 left in game. Oles won 5-2.

TEAM GOALS IN A PERIOD

Team scored 5 or more goals in a period

GAC: Jan. 21, 2011 at Saint Benedict.

Gusties scored five goals in the third period and won 8-1.

OPP: Dec. 3, 1998 at the University of Minnesota (Mariucci Arena). Gophers scored five goals in the first period and won 8-1.

PENALTY SHOTS

Scored on a penalty shot

GAC: Never.

OPP: March 19, 2011 vs. Middlebury (NCAA 3rd Place Game, Rochester, N.Y.). Penalty shot goal scored after Lindsey Hjelm checking penalty in the second period. Loss 5-0.

PENALTIES

Not penalized

GAC: Feb. 11, 2005 at St. Catherine. Gusties won 13-0.

OPP: Dec. 2, 2000 at St. Catherine. St. Kate's won 4-3.

Neither team was penalized

Jan. 30, 1998 at Saint Mary's. Gusties won 6-2.

HAT TRICKS

Last individual 3-goal game

GAC: Feb. 17, 2012 vs St. Olaf. Allie Schwab scored one even goal and two PP goals in Gusties 5-0 win.

OPP: March 18, 2011 vs. Norwich (NCAA Semifinals). Julie Fortier scored the first three goals of the game in a 5-4 Norwich victory.

Last individual 4-goal game

GAC: Dec. 2, 2011 at Augsburg. Allie Schwab scored three PP goals and an even goal in a 9-0 shutout.

OPP: Never.

All goals scored by one player

GAC: Never.

OPP: Dec. 2, 2006 at Hamline. Melanie Levielle scored all three goals in a 4-3 loss.

SHOTS ON GOAL

Fewer than 15 shots in a game

GAC: Dec. 3, 1998 at the University of Minnesota, 11 shots. Minnesota won 8-1.

OPP: Feb. 24, 2012 vs. Saint Ben's, 10 shots. GA 9-1 win.

Fewer than 20 shots in a game

GAC: Jan. 14, 2011 vs. Trinity, 18 shots. Scoreless 0-0 tie.

OPP: March 1, 2012 vs. Bethel, 15 shots.

40 or more shots in a game

GAC: March 1, 2012 vs. Bethel, 47 shots.

OPP: Dec. 10, 2010 at UW-River Falls, 40 shots. River Falls won 4-2.

50 or more shots in a game

GAC: Dec. 13, 2011 vs. UW-Superior, 53 shots. Gusties won 1-0 in overtime.

OPP: Nov. 23, 1998 vs. the University of Minnesota, 51 shots. Minnesota won 6-0.

60 or more shots in a game

GAC: Feb. 4, 2012 vs. Hamline, 62 shots. GA 2-1 win.

OPP: Feb. 5, 1998 at Boston College, 65 shots. BC won 10-1.

SINGLE GAME POINTS

Player had four points in a game

GAC: Feb. 24, 2012 vs. Saint Ben's.

Meagan Wanecke scored two goals with two assists in a 9-1 win.

OPP: Mar. 18, 2011 vs. Norwich (NCAA Semifinals). Julie Fortier scored three goals with an assist in a 5-4 Norwich victory.

Player had five points in a game

GAC: Dec. 2, 2011 at Augsburg. Allie Schwab scored three PP goals and an even goal with an assist in a 9-0 shutout.

OPP: Mar. 18, 2005 vs. Middlebury. (NCAA Semifinals) Lorna Grifis scored two goals with three assists in a 7-3 Middlebury win.

Player had six or more points in a game

GAC: Feb. 11, 2005 at St. Catherine. Andrea Peterson scored two goals with six assists in a 13-0 win. (Most individual points in a game in program history)

OPP: Jan. 30, 1999 at Middlebury. Michelle Labbe scored three goals with three assists in a 8-0 Middlebury win.



2011-12 GUSTAVUS ADOLPHUS WOMEN'S HOCKEY GAME NOTES

Gustavus Adolphus Hockey Gustavus Adolphus Overall Team Statistics (as of Mar 14, 2012) All games

Overall: 24-2-2 Conf: 16-1-1 Home: 14-0-1 Away: 10-2-1 Neut: 0-0-0

TEAM STATISTICS	GAC	OPP
SHOT STATISTICS		
Goals-Shot attempts	131-1138	42-458
Shot pct.	.115	.092
Goals/Game	4.7	1.5
Shots/Game	40.6	16.4
Assists	171	52
POWER PLAYS		
Goals-Power Plays	39-128	9-103
Conversion Percent	.305	.087
Shot Attempts	238	102
Shot Percent	.164	.088
SHORT-HANDED		
Goals-Shot attempts	5-34	1-10
Shot Percent	.147	.100
GOAL BREAKDOWN		
Total Goals	131	42
Power Play	39	9
Short-handed	5	1
Empty net	2	1
Penalty	0	0
Unassisted	20	8
Overtime	2	0
Shootout	0	0
Delayed Penalty	0	0
PENALTIES		
Number	111	139
Minutes	225	281
Penalties/Game	4.0	5.0
Pen minutes/Game	8.0	10.0
Minor	101	123
Major	1	1
10-minute Misconduct	0	0
Game Misconduct	0	0
Gross Misconduct	0	0
Match	0	0
FACEOFFS (W-L)		
Faceoff W-L Pct.	.679	.321
SHOOTOUTS (Made-Att)		
	0-0	0-0
ATTENDANCE		
Total	3690	1777
Dates/Avg Per Date	15/246	13/137
Neutral Site #/Avg	0/0	

Goals by Period	1st	2nd	3rd	OT	Total
Gustavus Adolphus	33	52	44	2	131
Opponents	7	20	15	0	42

Shots by Period	1st	2nd	3rd	OT	Total
Gustavus Adolphus	341	415	371	11	1138
Opponents	131	162	153	12	458

Saves by Period	1st	2nd	3rd	OT	Total
Gustavus Adolphus	124	142	138	12	416
Opponents	307	363	328	9	1007



2011-12 GUSTAVUS ADOLPHUS WOMEN'S HOCKEY GAME NOTES

Gustavus Adolphus Hockey Gustavus Adolphus Overall Individual Statistics (as of Mar 14, 2012) All games

Overall: 24-2-2 Conf: 16-1-1 Home: 14-0-1 Away: 10-2-1 Neut: 0-0-0

##	Player	gp	Shots					+/-	Penalties				Goals										blk
			g	a	pts	sh	sh%		pen-min	min	maj	oth	pp	sh	fg	gw	gt	ot	ht	pn	ua		
21	Allie Schwab	28	24	19	43	140	.171	+34	13-26	13	0	0	8	0	1	8	0	0	3	0	3	0	
8	Mollie Carroll	28	16	22	38	72	.222	+31	3-9	2	1	0	4	2	3	3	0	0	0	0	3	0	
9	Amanda Cartony	26	14	14	28	65	.215	+20	5-10	5	0	0	5	1	2	0	0	0	0	0	2	0	
18	Carolyn Draayer	28	18	8	26	97	.186	+11	2-4	2	0	0	5	0	3	6	1	1	0	0	3	1	
17	Lindsey Hjelm	28	9	14	23	134	.067	+27	29-58	26	0	0	4	0	3	1	0	0	0	0	4	0	
16	Kelsey Kennedy	28	1	21	22	46	.022	+37	4-8	3	0	0	1	0	0	1	0	0	0	0	0	1	
10	Courtney Boucher	28	7	10	17	92	.076	+8	5-10	5	0	0	1	0	2	3	0	1	0	0	1	0	
2	Meagan Wanecke	28	8	7	15	75	.107	+10	7-14	7	0	0	1	2	1	1	0	0	0	0	1	0	
4	Maddie Bergh	28	0	14	14	65	.000	+22	5-10	3	0	0	0	0	0	0	0	0	0	0	0	3	
19	Kelly Thotland	28	5	8	13	62	.081	+13	8-16	7	0	0	4	0	1	0	0	0	0	0	1	1	
5	Jenna Christensen	28	7	5	12	60	.117	+20	4-8	4	0	0	0	0	1	0	0	0	0	0	1	0	
22	Marissa Brandt	27	5	6	11	20	.250	+6	1-2	1	0	0	2	0	1	0	0	0	0	0	0	0	
11	Jess Harren	25	4	5	9	28	.143	+12	3-6	3	0	0	1	0	2	0	0	0	0	0	0	0	
14	Melissa Doyle	28	3	3	6	39	.077	+11	1-2	1	0	0	0	0	1	1	1	0	0	0	1	0	
23	Kayla Ingbretson	19	2	4	6	17	.118	+7	2-4	2	0	0	1	0	0	0	0	0	0	0	0	0	
15	Leah Johnson	16	4	1	5	27	.148	+2	2-4	2	0	0	1	0	1	0	0	0	0	0	0	0	
20	Grace Olson	22	2	3	5	18	.111	+7	1-2	0	0	0	1	0	0	0	0	0	0	0	0	0	
6	Whitney Schaff	19	0	3	3	16	.000	+5	3-6	3	0	0	0	0	0	0	0	0	0	0	0	1	
3	Gina DeNucci	21	1	1	2	24	.042	+7	3-6	3	0	0	0	0	1	0	0	0	0	0	0	0	
20	Gracie Olson	1	1	0	1	1	1.000	+1	0-0	0	0	0	0	0	1	0	0	0	0	0	0	0	
1	Danielle Justice	21	0	1	1	0	.000	0	0-0	0	0	0	0	0	0	0	0	0	0	0	0	0	
7	Beth Olson	9	0	1	1	4	.000	0	3-6	2	0	0	0	0	0	0	0	0	0	0	0	0	
12	Taylor Skelton	9	0	1	1	8	.000	+1	2-4	2	0	0	0	0	0	0	0	0	0	0	0	0	
G	G	1	0	0	0	0	.000	0	0-0	0	0	0	0	0	0	0	0	0	0	0	0	0	
24	Heidi Korin	2	0	0	0	3	.000	+2	2-4	2	0	0	0	0	0	0	0	0	0	0	0	0	
13	Emily Raber	3	0	0	0	1	.000	-2	1-2	1	0	0	0	0	0	0	0	0	0	0	0	0	
TM	TEAM	3	0	0	0	24	.000	0	2-4	2	0	0	0	0	0	0	0	0	0	0	0	78	
Total		28	131	171	302	1138	.115	+292	111-225	101	1	0	39	5	24	24	2	2	3	0	20	85	
Opponents		28	42	52	94	458	.092	-	139-281	123	1	0	9	1	4	2	0	0	0	0	8	258	

##	Goalie	gp-gs	Goal average			Saves		Record				Goals allowed				
			minutes	ga	avg	saves	pct	w	l	t	sho	pp	sh	en	pen	sog
1	Danielle Justice	21-20	1224:57	24	1.18	307	.927	18	0	2	4	5	1	0	0	0
35	Marah Sobczak	10-7	473:21	16	2.03	109	.872	5	2	0	2	4	0	0	0	0
30	Katherine Jorgenson	1-0	20:00	1	3.00	0	.000	0	0	0	0	0	0	0	0	0
TM	EMPTY NET	3-0	1:30	1	-	0	.000	0	0	0	2	0	0	1	0	0
Total		28-0	1719:48	42	1.47	416	.908	23	2	2	8	9	1	1	0	0
Opponents		28-0	1699:13	131	4.63	1007	.885	2	23	2	0	39	5	2	0	0



2011-12 GUSTAVUS ADOLPHUS WOMEN'S HOCKEY GAME NOTES

Gustavus Adolphus Hockey Gustavus Adolphus Combined Team Statistics (as of Mar 14, 2012) All games

Date	Opponent	Score	Att.
Nov 04	CONCORDIA(WI)	w 7-1	257
Nov 05	ST. NORBERT COLLEGE	w 8-1	137
* Nov 11	at Bethel University	w 5-1	157
* Nov 12	BETHEL UNIVERSITY	w 6-3	209
* Nov 18	ST. THOMAS	w 5-3	281
* Nov 19	at St. Thomas	w 3-2	125
* 12/02/11	at Augsburg College	w 9-0	159
* Dec 03	AUGSBURG COLLEGE	w 7-2	174
Dec 06	#7 UW-RIVER FALLS	Tot 1-1	129
Dec 13	#9 UW-SUPERIOR	Wot 1-0	174
01/06/12	at UW-Stevens Point	w 6-0	115
01/07/12	at UW-Stevens Point	w 5-2	97
* Jan 20	at St. Kate's	w 7-0	160
* Jan 21	ST. KATE'S	w 3-0	137
* Jan 27	at #9 Concordia-Moorhead	w 4-1	155
* Jan 28	at #9 Concordia-Moorhead	Tot 3-3	117
Jan 31	at UW-Superior	L 1-5	112
* Feb 03	at Hamline University	w 3-2	250
* Feb 04	HAMLIN UNIVERSITY	w 2-1	162
* Feb 10	at Saint Mary's	w 8-2	97
* Feb 11	SAINT MARY'S	w 5-0	139
* Feb 17	ST. OLAF	w 5-0	287
* Feb 18	at St. Olaf	L 2-5	133
* Feb 24	SAINT BENEDICT	w 9-1	139
* Feb 25	at Saint Benedict	w 7-2	100
Mar 01	BETHEL UNIVERSITY	Wot 1-0	249
Mar 03	CONCORDIA-MOORHEAD	w 4-2	537
Mar 10	UW-RIVER FALLS	w 4-2	679

TEAM STATISTICS	GAC	OPP
SHOT STATISTICS		
Goals-Shot attempts	131-1138	42-458
Shot pct.	.115	.092
Goals/Game	4.7	1.5
Shots/Game	40.6	16.4
POWER PLAYS		
Goals-Power Plays	39-128	9-103
Conversion Percent	.305	.087
Shot Attempts	238	102
Shot Percent	.164	.088
SHORT-HANDED		
Goals-Shot attempts	5-34	1-10
Shot Percent	.147	.100
GOAL BREAKDOWN		
Power Play	39	9
Short-handed	5	1
Empty net	2	1
Penalty	0	0
Unassisted	20	8
Overtime	2	0
Shootout	0	0
Delayed Penalty	0	0
PENALTIES		
Number	111	139
Minutes	225	281
Penalties/Game	4.0	5.0
Pen minutes/Game	8.0	10.0
FACEOFFS (W-L)	936-443	443-936
Faceoff W-L Pct.	.679	.321
SHOOTOUTS (Made-Att)	0-0	0-0

Record:	Overall	Home	Away	Neutral
ALL GAMES	24-2-2	14-0-1	10-2-1	0-0-0
CONFERENCE	16-1-1	8-0-0	8-1-1	0-0-0
NON-CONFERENCE	8-1-1	6-0-1	2-1-0	0-0-0

#	Player	gp	g	a	pts	sh	sh%	pen-min	pp	sh
21	Allie Schwab	28	24	19	43	140	.171	13-26	8	0
8	Mollie Carroll	28	16	22	38	72	.222	3-9	4	2
9	Amanda Cartony	26	14	14	28	65	.215	5-10	5	1
18	Carolyn Draayer	28	18	8	26	97	.186	2-4	5	0
17	Lindsey Hjelm	28	9	14	23	134	.067	29-58	4	0
16	Kelsey Kennedy	28	1	21	22	46	.022	4-8	1	0
10	Courtney Boucher	28	7	10	17	92	.076	5-10	1	0
2	Meagan Wanecke	28	8	7	15	75	.107	7-14	1	2
4	Maddie Bergh	28	0	14	14	65	.000	5-10	0	0
19	Kelly Thotland	28	5	8	13	62	.081	8-16	4	0
5	Jenna Christensen	28	7	5	12	60	.117	4-8	0	0
22	Marissa Brandt	27	5	6	11	20	.250	1-2	2	0
11	Jess Harren	25	4	5	9	28	.143	3-6	1	0
14	Melissa Doyle	28	3	3	6	39	.077	1-2	0	0
23	Kayla Ingbretson	19	2	4	6	17	.118	2-4	1	0
15	Leah Johnson	16	4	1	5	27	.148	2-4	1	0
20	Grace Olson	22	2	3	5	18	.111	1-2	1	0
6	Whitney Schaff	19	0	3	3	16	.000	3-6	0	0
3	Gina DeNucci	21	1	1	2	24	.042	3-6	0	0
20	Gracie Olson	1	1	0	1	1	1.000	0-0	0	0
1	Danielle Justice	21	0	1	1	0	.000	0-0	0	0
7	Beth Olson	9	0	1	1	4	.000	3-6	0	0
12	Taylor Skelton	9	0	1	1	8	.000	2-4	0	0
G	G	1	0	0	0	0	.000	0-0	0	0
24	Heidi Korin	2	0	0	0	3	.000	2-4	0	0
13	Emily Raber	3	0	0	0	1	.000	1-2	0	0
TM	TEAM	3	0	0	0	24	.000	2-4	0	0
Total		28	131	171	302	1138	.115	111-225	39	5
Opponents		28	42	52	94	458	.092	139-281	9	1

#	Goalie	gp	min	ga	gaavg	saves	save%	w-l-t
1	Danielle Justice	21	1224:57	24	1.18	307	.927	18-0-2
35	Marah Sobczak	10	473:21	16	2.03	109	.872	5-2-0
30	Katherine Jorgenson	1	20:00	1	3.00	0	.000	0-0-0
TM	EMPTY NET	3	1:30	1	-	0	.000	0-0-0
Total		28	1719:48	42	1.47	416	.908	23-2-2
Opponents		28	1699:13	131	4.63	1007	.885	2-23-2

Attendance Summary	GAC	Opponent
Total	3690	1777
Dates/Avg Per Date	15/246	13/137
Neutral Site #/Avg	0/0	

Goals by Period	1st	2nd	3rd	OT	Total
Gustavus Adolphus	33	52	44	2	131
Opponents	7	20	15	0	42

Shots by Period	1st	2nd	3rd	OT	Total
Gustavus Adolphus	341	415	371	11	1138
Opponents	131	162	153	12	458

Saves by Period	1st	2nd	3rd	OT	Total
Gustavus Adolphus	124	142	138	12	416
Opponents	307	363	328	9	1007



2011-12 GUSTAVUS ADOLPHUS WOMEN'S HOCKEY GAME NOTES

Gustavus Adolphus Hockey Gustavus Adolphus Category Leaders (as of Mar 14, 2012) All games

## Points	GP	G	A	Pts	Sh
21 Allie Schwab	28	24	19	43	140
8 Mollie Carroll	28	16	22	38	72
9 Amanda Cartony	26	14	14	28	65
18 Carolyn Draayer	28	18	8	26	97
17 Lindsey Hjelm	28	9	14	23	134
16 Kelsey Kennedy	28	1	21	22	46
10 Courtney Boucher	28	7	10	17	92
2 Meagan Wanecke	28	8	7	15	75
4 Maddie Bergh	28	0	14	14	65
19 Kelly Thotland	28	5	8	13	62

## Goals	GP	G	A	Pts	Sh
21 Allie Schwab	28	24	19	43	140
18 Carolyn Draayer	28	18	8	26	97
8 Mollie Carroll	28	16	22	38	72
9 Amanda Cartony	26	14	14	28	65
17 Lindsey Hjelm	28	9	14	23	134
2 Meagan Wanecke	28	8	7	15	75
10 Courtney Boucher	28	7	10	17	92
5 Jenna Christensen	28	7	5	12	60
19 Kelly Thotland	28	5	8	13	62
22 Marissa Brandt	27	5	6	11	20

## Power-Play Goals	GP	PPG
21 Allie Schwab	28	8
18 Carolyn Draayer	28	5
9 Amanda Cartony	26	5
19 Kelly Thotland	28	4
17 Lindsey Hjelm	28	4
8 Mollie Carroll	28	4
22 Marissa Brandt	27	2

## Short-Handed Goals	GP	SHG
2 Meagan Wanecke	28	2
8 Mollie Carroll	28	2
9 Amanda Cartony	26	1

## Game-Winning Goals	GP	GWG
21 Allie Schwab	28	8
18 Carolyn Draayer	28	6
10 Courtney Boucher	28	3
8 Mollie Carroll	28	3

## Plus/Minus	GP	+/-
16 Kelsey Kennedy	28	+37
21 Allie Schwab	28	+34
8 Mollie Carroll	28	+31
17 Lindsey Hjelm	28	+27
4 Maddie Bergh	28	+22
9 Amanda Cartony	26	+20
5 Jenna Christensen	28	+20
19 Kelly Thotland	28	+13
11 Jess Harren	25	+12
18 Carolyn Draayer	28	+11

## Assists	GP	G	A	Pts	Sh
8 Mollie Carroll	28	16	22	38	72
16 Kelsey Kennedy	28	1	21	22	46
21 Allie Schwab	28	24	19	43	140
9 Amanda Cartony	26	14	14	28	65
17 Lindsey Hjelm	28	9	14	23	134
4 Maddie Bergh	28	0	14	14	65
10 Courtney Boucher	28	7	10	17	92
18 Carolyn Draayer	28	18	8	26	97
19 Kelly Thotland	28	5	8	13	62
2 Meagan Wanecke	28	8	7	15	75

## Shots	GP	G	A	Pts	Sh	Sh%
21 Allie Schwab	28	24	19	43	140	.171
17 Lindsey Hjelm	28	9	14	23	134	.067
18 Carolyn Draayer	28	18	8	26	97	.186
10 Courtney Boucher	28	7	10	17	92	.076
2 Meagan Wanecke	28	8	7	15	75	.107
8 Mollie Carroll	28	16	22	38	72	.222
9 Amanda Cartony	26	14	14	28	65	.215
4 Maddie Bergh	28	0	14	14	65	.000
19 Kelly Thotland	28	5	8	13	62	.081
5 Jenna Christensen	28	7	5	12	60	.117

## Shot Pct.	GP	G	A	Pts	Sh	Sh%
20 Gracie Olson	1	1	0	1	1	1.000
22 Marissa Brandt	27	5	6	11	20	.250
8 Mollie Carroll	28	16	22	38	72	.222
9 Amanda Cartony	26	14	14	28	65	.215
18 Carolyn Draayer	28	18	8	26	97	.186
21 Allie Schwab	28	24	19	43	140	.171
15 Leah Johnson	16	4	1	5	27	.148
11 Jess Harren	25	4	5	9	28	.143
23 Kayla Ingbretson	19	2	4	6	17	.118
5 Jenna Christensen	28	7	5	12	60	.117

## Penalties	GP	Pen	Min
17 Lindsey Hjelm	28	29	58
21 Allie Schwab	28	13	26
19 Kelly Thotland	28	8	16
2 Meagan Wanecke	28	7	14
10 Courtney Boucher	28	5	10
4 Maddie Bergh	28	5	10
9 Amanda Cartony	26	5	10
16 Kelsey Kennedy	28	4	8
5 Jenna Christensen	28	4	8
8 Mollie Carroll	28	3	9

## Penalty Minutes	GP	Pen	Min
17 Lindsey Hjelm	28	29	58
21 Allie Schwab	28	13	26
19 Kelly Thotland	28	8	16
2 Meagan Wanecke	28	7	14
9 Amanda Cartony	26	5	10
10 Courtney Boucher	28	5	10
4 Maddie Bergh	28	5	10
8 Mollie Carroll	28	3	9
5 Jenna Christensen	28	4	8
16 Kelsey Kennedy	28	4	8



2011-12 GUSTAVUS ADOLPHUS WOMEN'S HOCKEY GAME NOTES

2011-12 GUSTAVUS WOMEN'S HOCKEY ROSTER



Top row (L to R): Melissa Doyle, Courtney Boucher, Amanda Cartony, Kelly Thotland, Taylor Skelton, Maddie Bergh, Emily Raber, Kelsey Kennedy, Kayla Ingbretson, Leah Johnson

Middle row (L to R): Assistant Coach Steve Carroll, Assistant Coach Matt Carroll, Carolyn Draayer, Beth Olson, Heidi Korin, Assistant Captain Lindsey Hjelm, Marissa Brandt, Assistant Captain Jenna Christensen, Athletic Trainer Mitch Brockenstedt, Head Coach Mike Carroll, Assistant Coach Kirstin Peterson

Front row (L to R): Marah Sobczak, Assistant Captain Jess Harren, Whitney Schaff, Captain Mollie Carroll, Gina DeNucci, Danielle Justice, Grace Olson, Allie Schwab, Meagan Wanecke, Katherine Jorgenson

<u>NO.</u>	<u>NAME (pronunciation)</u>	<u>POS</u>	<u>YR</u>	<u>HGT</u>	<u>HOMETOWN</u>	<u>HIGH SCHOOL</u>
1	Danielle Justice	G	SR	5-3	Alexandria, Minn.	Jefferson
2	Meagan Wanecke (WAHN-ah-key)	F	JR	5-4	Delafield, Wis.	Kettle Mouraine
3	Gina DeNucci (duh-NEW-chee)	D	SR	5-7	Chanhassen, Minn.	Minnetonka
4	Maddie Bergh	D	SO	5-4	Eden Prairie, Minn.	Benilde St. Margaret's
5	Jenna Christensen ^A	F	JR	5-6	Albert, Lea, Minn.	Albert Lea
6	Whitney Schaff (SHAF)	F	SR	5-2	Cambridge, Minn.	Cambridge
7	Beth Olson	D	FY	5-9	Warroad, Minn.	Warroad
8	Mollie Carroll ^C	F	SR	5-4	Eagan, Minn.	Eagan
9	Amanda Cartony	F	SO	5-7	Stillwater, Minn.	Stillwater
10	Courtney Boucher (boo-SHAY)	F	FY	5-7	Hastings, Minn.	Hastings
11	Jess Harren ^A (HAIR-en)	D	JR	5-7	Woodbury, Minn.	Hill-Murray
12	Taylor Skelton	F	FY	5-7	Ely, Minn.	Ely
13	Emily Raber (RAY-ber)	D	FY	5-4	Buena Park, Calif.	John. F. Kennedy
14	Melissa Doyle	F	SO	5-0	White Bear Lake, Minn.	Hill-Murray
15	Leah Johnson	F	FY	5-4	Chanhassen, Minn.	Chaska
16	Kelsey Kennedy	D	JR	5-3	Eagan, Minn.	Eagan
17	Lindsey Hjelm ^A (HELM)	D	JR	5-7	North Oaks, Minn.	Mounds View
18	Carolyn Draayer (DRAY-er)	F	FY	5-6	Deephaven, Minn.	Minnetonka
19	Kelly Thotland	D	FY	5-3	Edina, Minn.	Edina
20	Grace Olson	F	SR	5-7	Apple Valley, Minn.	Holy Angels
21	Allie Schwab	F	SR	5-8	Stillwater, Minn.	Stillwater
22	Marissa Brandt	F	FY	5-6	Vadnais Heights, Minn.	Hill-Murray
23	Kayla Ingbretson (ING-ah-bret-son)	F	JR	5-4	Mound, Minn.	Mound-Westonka
24	Heidi Korin	D	FY	5-8	Corcoran, Minn.	Wayzata
30	Katherine Jorgenson	G	SO	5-9	Colleyville, Texas	Kent School
35	Marah Sobczak (SAHB-check)	G	SO	5-4	Stillwater, Minn.	Stillwater

C: Denotes Captain

A: Denotes Assistant Captain

Head Coach: Mike Carroll (13th Season)

Assistant Coach: Stephen Carroll (12th season)

Assistant Coach: Kirstin Peterson (First season)

Assistant Coach: Matt Carroll (First season)

GUSTAVUS WOMEN'S HOCKEY PROJECTED LINE CHART

LEFT WING



8

Mollie Carroll

SR, 5-4

Eagan, Minn.

Season: 28 gp, 16-22-38

Career: 108 gp, 35-46-81



14

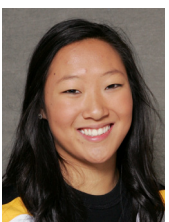
Melissa Doyle

SO, 5-1

White Bear Lake, Minn.

Season: 28 gp, 3-3-6

Career: 55 gp, 11-11-22



22

Marissa Brandt

FY, 5-6

Vadnais Heights, Minn.

Season: 27 gp, 5-6-11

Career: 27gp, 5-6-11



23

Kayla Ingbreton

JR, 5-4

Mound, Minn.

Season: 19 gp, 2-4-6

Career: 63 gp, 6-5-11

CENTER



21

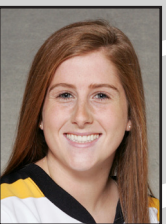
Allie Schwab

SR, 5-8

Stillwater, Minn.

Season: 28 gp, 24-19-43

Career: 116 gp, 70-52-122



2

Meagan Wanecke

JR, 5-4

Delafield, Wis.

Season: 28 gp, 8-7-15

Career: 87 gp, 26-22-48



18

Carolyn Draayer

FY, 5-6

Deephaven, Minn.

Season: 28 gp, 18-8-26

Career: 28 gp, 18-8-26



20

Grace Olson

SR, 5-7

Apple Valley, Minn.

Season: 23 gp, 3-3-6

Career: 99 gp, 11-17-28

RIGHT WING



9

Amanda Cartony

SO, 5-7

Stillwater, Minn.

Season: 26 gp, 14-14-28

Career: 54, 27-22-49



5

Jenna Christensen

JR, 5-6

Albert Lea, Minn.

Season: 28 gp, 8-5-12

Career: 84 gp, 15-8-23



10

Courtney Boucher

FY, 5-7

Hastings, Minn.

Season: 28 gp, 7-10-17

Career: 28 gp, 7-10-17



6

Whitney Schaff

SR, 5-2

Cambridge, Minn.

Season: 18 gp, 0-3-3

Career: 100 gp, 7-14-21

LEFT DEFENSE



17

Lindsey Hjelm

SO, 5-9

North Oaks, Minn.

Season: 28 gp, 9-14-23

Career: 88 gp, 32-45-77



4

Maddie Bergh

SO, 5-4

Eden Prairie, Minn.

Season: 28 gp, 0-14-14

Career: 56 gp, 3-17-20



11

Jess Harren

JR, 5-7

Woodbury, Minn.

Season: 25 gp, 4-5-9

Career: 54 gp, 7-8-15

RIGHT DEFENSE



19

Kelly Thotland

FR, 5-3

Edina, Minn.

Season: 28 gp, 5-8-13

Career: 28 gp, 5-8-13



16

Kelsey Kennedy

JR, 5-3

Eagan, Minn.

Season: 28 gp, 1-21-22

Career: 85 gp, 3-38-41



7

Beth Olson

FY, 5-9

Warroad, Minn.

Season: 9 gp, 0-1-1

Career: 9 gp, 0-1-1

GOALTENDERS



1

Danielle Justice

SR, 5-3

Alexandria, Minn.

Season: 18-0-2, 1.19, .927

Career: 61-10-9, 1.10, .934



35

Marah Sobczak

SO, 5-4

Stillwater, Minn.

Season: 6-2-0, 2.03, .872

Career: 7-2-0, 1.68, .896



31

Katherine Jorgenson

SO, 5-9

Colleyville, Texas

Season: 0-0-0, 3.00, .000

Career: 3-0-0, 0.84, .938