



GUSTAVUS

WOMEN'S HOCKEY

2011-12 GUSTAVUS SCHEDULE

Date	Opponent	Time/Result
11/4	Concordia Univ.	W 7-1
11/5	St. Norbert	W 8-1
11/11	Bethel *	W 5-1
11/12	Bethel *	W 6-3
11/18	St. Thomas *	W 5-3
11/19	St. Thomas *	W 3-2
12/2	Augsburg *	W 9-0
12/3	Augsburg *	W 7-2
12/6	UW-River Falls	T 1-1 (OT)
12/13	UW-Superior	W 1-0 (OT)
1/6	UW-Stevens Point	W 6-0
1/7	UW-Stevens Point	W 5-2
1/20	St. Catherine *	W 7-0
1/21	St. Catherine *	W 3-0
1/27	Concordia *	W 4-1
1/28	Concordia *	T 3-3 (OT)
1/31	UW-Superior	L 1-5
2/3	Hamline *	W 3-2
2/4	Hamline *	W 2-1
2/10	Saint Mary's *	W 8-2
2/11	Saint Mary's *	W 5-0
2/17	St. Olaf *	W 5-0
2/18	St. Olaf *	L 2-5
2/24	Saint Benedict *	W 9-1
2/25	Saint Benedict *	W 7-2
3/1	Bethel ^	W 1-0 (OT)
3/3	Concordia ^	W 4-2
3/10	UW-River Falls #	2:00 p.m.

Home Games in bold; all times Central

* MIAC Game ^ MIAC Playoff Game

NCAA Tournament Game

NCAA First Round

St. Peter, Minn.



No. 5 Gustavus
23-2-2 overall
MIAC Champions
vs.
No. 7 UW-River Falls
23-4-2 overall
NCHA Champions



Game Information

DATE: Saturday, March 10, 2012

TIME: 2:00 p.m.

RADIO: Not Provided

WEB AUDIO: <http://client.stretchinternet.com/client/gac.portal#>

LIVE VIDEO: <http://client.stretchinternet.com/client/gac.portal#>

LIVE STATS: <https://gustavus.edu/athletics/whky/LIVE/xlive.htm>

TWITTER: GustieAthletics

And We're Dancing...

THE MATCH-UP... After defeating Concordia College 4-2 on Saturday afternoon for the MIAC Playoff Championship, the Gustavus women's hockey team is set to host a familiar foe on the national stage - the University of Wisconsin-River Falls. The Gusties and Falcons will face off in the first round of the NCAA Division III Women's Ice Hockey Tournament at Don Roberts Ice Rink on Saturday at 2:00 p.m.

The Three Crowns are making their ninth consecutive appearance at the NCAA Tournament with a 23-2-2 overall record, while the Falcons enter the match-up with a 23-4-2 overall mark.

The two squads will meet in the first round on the national stage for the fourth-straight season. Gustavus has won the last two. Back on Dec. 6 this season, the Gusties and Falcons skated to a 1-1 tie at Don Roberts Ice Rink. River Falls took a 1-0 lead at the 17:46 mark in the second on a goal by Kait Mason and the Gusties netted the equalizer 4:23 into the third off the stick of Melissa Doyle.

GUSTAVUS COVERAGE... First round coverage of the NCAA Tournament from Don Roberts Ice Rink will be broadcast live on Stretch Internet through the Gustavus Adolphus Athletics website via the link below. Assistant Sports Information Director CJ Siewert and Gustavus Admission Counselor JJ Akin will be on the call for Saturday afternoon's match-up. They will be joined by Gustavus assistant coach Steve Carroll during the intermission breaks.

<http://client.stretchinternet.com/client/gac.portal>

Women's Hockey Contact

Assistant Sports Info. Director: CJ Siewert

Email: csiewer3@gustavus.edu

Office Phone: 507-933-8411



2011-12 GUSTAVUS ADOLPHUS WOMEN'S HOCKEY GAME NOTES

MIAC STANDINGS/SCHEDULE

School	MIAC	Points	Overall
1. Gustavus #^*	16-1-1	33	23-2-2
2. Concordia #*	10-3-5	25	15-5-5
3. St. Thomas *	11-6-1	23	15-8-2
4. St. Olaf *	9-7-2	20	9-13-4
5. Bethel *	9-7-2	20	12-10-4
St. Catherine	8-8-2	18	12-10-2
Saint Mary's	4-9-5	13	7-12-6
Augsburg	3-11-4	10	6-11-8
St. Ben's	3-12-3	9	5-17-3
Hamline	4-13-1	9	8-15-2

clinched NCAA tournament berth

^ clinched MIAC regular season and playoff title

* clinched MIAC playoff berth

Saturday, March 10

UW-River Falls @ Gustavus | 2:00 p.m.

Concordia @ Rochester IT | 1:00 p.m.

STAT COMPARISON

GAC		UWRF
4.70 (3rd)	Goals For	4.28 (5th)
1.48 (6th)	Goals Against	1.66 (9th)
29.7% (3rd)	Power Play	17.3% (18th)
91.0% (3rd)	Penalty Kill	89.8% (4th)
7.8 (47th)	Penalty Minutes	10.2 (21st)

(Overall per game averages with national rank)

THE SERIES

All-Time: 16-4-3

Last Ten: 6-2-2

Date	Location	Result
12/6/11	St. Peter	T 1-1
3/11/11	River Falls	W 4-1 *
12/10/10	River Falls	L 2-4
3/13/10	St. Peter	W 2-0 *
1/12/10	St. Peter	W 2-1
11/13/09	River Falls	T 3-3
3/14/09	St. Peter	L 1-2 *
1/27/09	St. Peter	W 5-3
11/10/07	River Falls	W 3-1
12/13/06	St. Peter	W 1-0

* NCAA first round game

GAME NOTES

MEET THE COACHING STAFFS... Gustavus Head Coach **Mike Carroll** is in his 13th season at the helm for the Gusties. He has compiled an overall record of 287-66-22 and 202-21-4 mark in the MIAC in 13 seasons on the bench and has the second most coaching victories among Division III active and all-time coaches. Carroll, an Edina, Minn. native, competed in hockey and baseball at Minnesota State University-Mankato. After graduating with a degree in municipal recreation in 1982, Carroll played professional baseball in the Montreal Expos organization for two years.

Carroll is assisted by **Steve Carroll** (MSU-Mankato '81) - named one of the 10 greatest Mavericks in their men's hockey program; **Kirstin Peterson** (Gustavus '11), a three-time All-American for the Gustavus women's hockey program from 2008-11; and Matt Carroll (Gustavus '04), Mike's son.

Falcon Coach **Joe Cranston** is in his 13th season as women's hockey coach at UW-River Falls. He is the only coach the Falcons have had in the team's history. Cranston led the Falcons to the NCAA playoffs in 2009, 2010 and 2011. The 2009 and 2010 teams also won the NCHA playoff championships. The 2009 and 2011 teams won the regular season NCHA title and the 2009 team advanced to the NCAA semifinals. Cranston has posted a 216-106-32 career record at UWRF. In all of women's college hockey he is 11th in winning percentage (.655) among all coaches. His 216 wins are third among Division III active and all-time coaches.

Cranston is assisted by **Jim Walsh** (UW-River Falls '86), **Mandy Stokes** (UW-River Falls '03), **Jenna Johnson-Saewert** (Concordia-Moorhead '06) and **Cassi Campbell** (UW-River Falls '11).

ABOUT UW-RIVER FALLS... River Falls has enjoyed four consecutive seasons with at least 20 wins. During that time frame, the Falcons have claimed three NCHA playoff championships and four NCAA Tournament appearances.

Much like the Gusties in the MIAC, the Falcons have a strong presence statistically in the NCHA. Four of the top ten scorers in the NCHA wear Falcon colors. They are led by **Katie Betters** in third with 31 points, while **Alice Cranston**, **Katie Flanagan** and **Kait Mason** round out the top scorers for the Falcons. The latter three have scored 28, 27 and 26 points, respectively, and sit seventh, eighth and ninth in the NCHA.

Melissa Deardorff has spent the majority of the time in the net for the Falcons. Playing the third most minutes in the NCHA at 1147:01, Deardorff has a 1.52 goals against average, which leads the conference. She also has the highest win percentage at .850.

THE SERIES... Saturday's match will mark the 24th meeting between the Gusties and Falcons on the ice. Gustavus holds the all-time series advantage 16-4-3. Earlier this year the two squads tied 1-1 in overtime in St. Peter.

The last three seasons the Gusties and Falcons have met in the opening round of the NCAA Tournament. The last two seasons, the Gusties came out on top. Last year in River Falls, Wis., the Gusties knocked off the Falcons 4-1. River Falls was ranked second in the nation at that point. Jenna Christensen scored two goals and added a pair of assists to lead the charge.

Two years ago in St. Peter, it took until the third period before the Gusties got a pair of goals to take the game 2-0. Allie Schwab scored the first and deciding goal in that game.



2011-12 GUSTAVUS ADOLPHUS WOMEN'S HOCKEY GAME NOTES

GAME NOTES

Three years ago in St. Peter, it was the Falcons winning 2-1 and eventually moving on to the Frozen Four. With the scored tied 1-1 after two periods, the Falcons scored the deciding goal mid-way through the third and held on for the win.

Gustavus career scoring vs. River Falls

Player	G	A	P
Allie Schwab	4	0	4
Jenna Christensen	2	2	4
Lindsey Hjelm	2	2	4
Melissa Doyle	1	2	3
Meagan Wanecke	1	2	3
Mollie Carroll	1	2	3
Whitney Schaff	1	2	3
Grace Olson	0	2	2
Kelsey Kennedy	0	2	2
Kelsey Johnson	0	2	2
Gina DeNucci	0	1	1
Maddie Bergh	0	1	1
Jess Harren	0	1	1

River Falls career scoring vs. Gustavus

Player	G	A	P
Katie Flanagan	2	1	3
Kait Mason	1	1	2
Brook Story	2	0	2
Alyssa Black	1	1	2
Amanda Ryder	1	0	1
Alyssa Jackson	0	1	1
Katie Batters	0	1	1
Heather Horgan	0	1	1

LIGHTING THE LAMP... Both squads have been dominant from start to finish this season. The Gusties' 127 goals this season are 44 more than the second team in the MIAC. The Falcons have scored 124 goals this season, 34 more than the closest competitor in the NCHA. Both squads also top their conference in scoring defense. The Falcons have allowed 1.66 goals per game, while the Gusties have allowed 1.48. The high for the Falcons came in a 7-0 win against Concordia University (WI) and for the Gusties it was a 9-0 win against Augsburg.

NATIONALLY RECOGNIZED TEAMS... Both squads are inside the top 10 in the latest USCHO.com national poll. Gustavus sits in fifth and UW-River Falls, seventh. The stats reflect these standings. Gustavus is third nationally with 4.70 goals per game and UW-River Falls is fifth at 4.28. In scoring defense, Gustavus sits in sixth with 1.48 goals allowed per game and UW-River Falls is ninth at 1.66. When both teams win, they tend to win in convincing fashion. The Gusties are third in the nation with a scoring margin of 3.22 and the Falcons are sixth with a 2.62 scoring margin. Both teams are on a four-game unbeaten streak. Only No. 1 ranked Rochester Institute of Technology and No. 2 ranked Norwich University have longer unbeaten streaks of 11.

HARD TO THE NET... Senior forward Allie Schwab has consistently led the Gusties and the MIAC in point-scoring this season. The MIAC Player of the Year has accumulated 22 goals and 19 assists for 41 points on the year - all career highs. Her 41 points are the most scored by a Gustie since four-time MIAC Player of the Year Andrea Peterson tallied 48 (14G, 33A) in the 2005-06 season. Kelly Crandall scored 47 (14G, 33A) the same year.

As a team, the Gusties have scored 127 goals this season, the most since the 2006-07 squad tallied 134. In the 15-year history of the program, the women have accumulated 1,922 goals, averaging 128.13 per season. The program record for most goals scored in a season is 172 set in the 1999-2000 campaign.

DOMINANT COACHING... Both head coaches in Saturday's match-up have set a high standard of coaching in collegiate women's hockey. Gustavus Head Coach Mike Carroll has the second most victories among all Division III coaches with 287, while River Falls Head Coach Joe Cranston is right behind Carroll in third with 216 career victories. Carroll's .795 win percentage is the best in Division III among coaches with at least 10 year experience, while Cranston's .655 win percentage ranks third.

USCHO.com DIII RANKINGS

RK	Team	Record	Pts.	PR
1	RIT (14)	25-1-1	149	1
2	Norwich (1)	25-2-1	136	2
3	Middlebury	21-3-3	117	4
4	Amherst	21-5-1	94	3
5	Gustavus	23-2-2	89	6
6	Plattsburgh	18-6-3	77	5
7	UW-River Falls	23-4-2	67	7
8	Elmira	20-5-1	36	8
9	Concordia (MN)	15-5-5	30	10
10	UW-Superior	17-8-3	14	9

Others receiving votes: Adrian (5), St. Thomas (4), Trinity (3), Bowdoin (2), Lake Forest (1), Oswego (1).

PairWise Comparison: West Region

Team	GP	W-L-T	Win%	Win% Rk
Gustavus	27	23-2-2	.8889	1
UW-River Falls	28	23-3-2	.8571	2
Concordia (MN)	23	14-4-5	.7174	3
UW-Superior	28	17-8-3	.6607	4
St. Thomas	23	14-7-2	.6522	5
Adrian	24	14-8-2	.6250	6
Lake Forest	27	15-10-2	.5926	7
St. Scholastica	25	12-8-5	.5800	8
St. Catherine	23	11-10-2	.5217	9
Bethel	25	11-10-4	.5200	10

QUICK FACTS

School:	Gustavus Adolphus College
Location:	St. Peter, Minnesota
Address:	800 West College Ave. St. Peter, MN 56082
Founded:	1862
Enrollment:	2,572
Nickname:	Golden Gusties
School Colors:	Black and Gold
Home Arena:	Don Roberts Ice Rink
NCAA Affiliation:	NCAA Division III
Conference:	Minnesota Intercollegiate Athletic Conference
President:	Jack R. Ohle
Athletic Director:	Al Molde
AD Office Phone	507-933-7622
Sports Information Director:	Ethan Armstrong
SID Office Phone:	507-933-7647
Website:	www.gustavus.edu/athletics/whky



2011-12 GUSTAVUS ADOLPHUS WOMEN'S HOCKEY GAME NOTES

2012 NCAA DIVISION III WOMEN'S ICE HOCKEY CHAMPIONSHIP

FIRST ROUND

March 10

SEMIFINALS

March 16

FINAL

March 17

* Rochester Inst.

Concordia - Moorhead

* Middlebury

Plattsburgh State

* Gustavus Adolphus

Univ. of Wis. - River Falls

Amherst

* Norwich

**NATIONAL
CHAMPION**

* Host Institution

THIRD PLACE

March 17



2012 ICE HOCKEY CHAMPIONSHIP

DIVISION III

WWW.GUSTAVUS.EDU/ATHLETICS/WHKY



2011-12 GUSTAVUS ADOLPHUS WOMEN'S HOCKEY GAME NOTES

2011-12 OVERALL INDIVIDUAL STATS



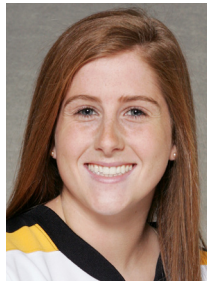
No. 1
Danielle Justice
Senior - Goalie
Min: 1164:57
GAA: 1.13
Save Percentage: .928
Record: 16-0-2



No. 7
Beth Olson
First-year - Defense
Games Played: 8
Goals: 0
Assists: 1
Points: 1



No. 13
Emily Raber
First-year - Defense
Games Played: 3
Goals: 0
Assists: 0
Points: 0



No. 2
Meagan Wanecke
Junior - Forward
Games Played: 27
Goals: 8
Assists: 7
Points: 15



No. 8
Mollie Carroll
Senior - Forward
Games Played: 27
Goals: 15
Assists: 22
Points: 37



No. 14
Melissa Doyle
Sophomore - Forward
Games Played: 27
Goals: 3
Assists: 3
Points: 6



No. 3
Gina DeNucci
Senior - Defense
Games Played: 21
Goals: 1
Assists: 1
Points: 2



No. 9
Amanda Cartony
Sophomore - Forward
Games Played: 25
Goals: 13
Assists: 13
Points: 26



No. 15
Leah Johnson
First-year - Forward
Games Played: 16
Goals: 4
Assists: 1
Points: 5



No. 4
Maddie Bergh
Sophomore - Defense
Games Played: 27
Goals: 0
Assists: 14
Points: 14



No. 10
Courtney Boucher
First-year - Forward
Games Played: 27
Goals: 7
Assists: 10
Points: 17



No. 16
Kelsey Kennedy
Junior - Defense
Games Played: 27
Goals: 1
Assists: 20
Points: 21



No. 5
Jenna Christensen
Junior - Forward
Games Played: 27
Goals: 7
Assists: 5
Points: 12



No. 11
Jess Harren
Junior - Defense
Games Played: 24
Goals: 4
Assists: 5
Points: 10



No. 17
Lindsey Hjelm
Junior - Defense
Games Played: 27
Goals: 9
Assists: 14
Points: 23



No. 6
Whitney Schaff
Senior - Forward
Games Played: 18
Goals: 0
Assists: 3
Points: 3



No. 12
Taylor Skelton
First-year - Forward
Games Played: 9
Goals: 0
Assists: 1
Points: 1



No. 18
Carolyn Draayer
First-year - Forward
Games Played: 27
Goals: 18
Assists: 8
Points: 26



2011-12 GUSTAVUS ADOLPHUS WOMEN'S HOCKEY GAME NOTES

2011-12 OVERALL INDIVIDUAL STATS



No. 19

Kelly Thotland
First-year - Defense
Games Played: 27
Goals: 5
Assists: 8
Points: 13



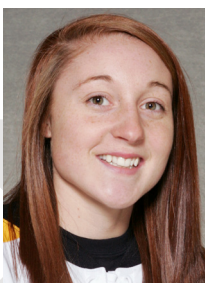
No. 30

Katherine Jorgenson
Sophomore - Goalie
Min: 20:00
GAA: 3.00
Save Percentage: .000
Record: 0-0-0



No. 20

Grace Olson
Senior - Forward
Games Played: 21
Goals: 2
Assists: 3
Points: 5



No. 35

Marah Sobczak
Sophomore - Goalie
Min: 473:21
GAA: 2.03
Save Percentage: .872
Record: 5-2-0

2011-12 Statistical Leaders

Goals: Allie Schwab, 22
Assists: Mollie Carroll, 22
Points: Allie Schwab, 41
Shot Pct: Mollie Carroll, .217
+/-: Kelsey Kennedy, +36
Penalties: Lindsey Hjelm, 26-52
PP Goals: Allie Schwab, 8
SH Goals: Carroll and Wanecke, 2
GW Goals: Allie Schwab, 7
GAA: Danielle Justice, 1.13
Save Pct: Danielle Justice, .928



No. 21

Allie Schwab
Senior - Forward
Games Played: 27
Goals: 22
Assists: 19
Points: 41



No. 22

Marissa Brandt
First-year - Forward
Games Played: 26
Goals: 5
Assists: 6
Points: 11



No. 23

Kayla Ingbreton
Junior - Forward
Games Played: 18
Goals: 2
Assists: 4
Points: 6



No. 24

Heidi Korin
First-year - Defense
Games Played: 2
Goals: 0
Assists: 0
Points: 0

THE CARROLL FILE Mike Carroll's Coaching Record

Year	Overall	MIAC	Conf. Finish
1999-00	18-10-1	12-5-1	3rd
2000-01	23-6-1	16-2-0	1st
2001-02	23-5-2	18-0-1	1st
2002-03	14-9-4	11-4-3	3rd
2003-04	22-6-0	16-2-0	2nd
2004-05	25-4-1	17-1-0	1st
2005-06	22-5-2	17-0-1	1st
2006-07	25-3-0	17-1-0	1st
2007-08	25-3-0	18-0-0	1st
2008-09	22-2-4	16-0-2	1st
2009-10	22-6-2	14-3-1	1st
2010-11	22-5-3	14-2-2	1st
2011-12	23-2-2	16-1-1	1st

TOTALS 287-66-22 202-21-4

Years at Gustavus: 13
NCAA Appearances: 9
MIAC Titles: 10
MIAC Coach of the Year: (5) 2001-02,
2003-04, 2004-05, 2005-06, 2010-11





2011-12 GUSTAVUS ADOLPHUS WOMEN'S HOCKEY GAME NOTES

THE LAST TIME IT HAPPENED...

COMEBACKS

GAC won when trailing after two periods
Nov. 22, 2008 vs. St. Olaf. Gusties scored three in the third to win 4-2.

Opponent won when trailing after two periods

Feb. 18, 2012 at St. Olaf. Oles trailed 2-1 after two, but scored four goals in the third.

Overcame 1-goal deficit and won

GAC: March 3, 2012 vs. Concordia (MIAC Championship). Gusties trailed 1-0 in the second but scored four unanswered goals and won 4-2.

OPP: Jan. 28, 2011 at St. Catherine. St. Kate's replied with two in the first for a 2-1 win.

Overcame 2-goal deficit and won

GAC: Nov. 17, 2006 vs. Concordia. GAC answered with a goal in the second and two in the third for a 3-2 victory.

OPP: Feb. 18, 2012 at St. Olaf. Oles trailed 2-1 after two, but scored four goals in the third.

Overcame a 3-goal deficit and won

GAC: March 1, 1998 vs. University of Minnesota Club. Gusties scored one in the second and three in the third to win 4-3.

OPP: Never

OVERTIME GAMES

Won overtime game

GAC: March 1, 2012. Gusties defeat

Bethel 1-0 in MIAC Semifinals.

OPP: Nov. 7, 2008 at Adrian 2-1.

Tied overtime game

Jan. 28, 2012 at Concordia 3-3.

SERIES SWEEPS

Swept a 2-game regular season home and away series

GAC: Feb. 24-25, 2012 vs Saint Ben's. (7-2 at St. Cloud, 9-1 at St. Peter)

OPP: Nov. 21-22, 2003 vs. St. Thomas. (3-1 at St. Paul, 4-2 at St. Peter)

Swept a 2-game regular season home series

GAC: Feb. 13-14, 2009 vs. Concordia. (7-0, 5-0)

OPP: Never

Swept a 2-game regular season away series

GAC: Jan. 6-7, 2012 at UW-Stevens Point. (6-0, 5-2)

OPP: Never. (MIAC Playoffs: March 10-11, 2000 at Augsburg. (4-1, 2-1)

SHUTOUTS

Last Shutout

GAC: March 1, 2012. Gusties defeat Bethel 1-0 in MIAC Semifinals.

OPP: Dec. 3, 2010 at St. Thomas 1-0.

Last Shutout in St. Peter

GAC: March 1, 2012. Gusties defeat Bethel 1-0 in MIAC Semifinals.

OPP: March 19, 2010 vs. Amherst 4-0.

Last Road Shutout

GAC: Jan. 6, 2012 at UW-Stevens Point 6-0.

OPP: Dec. 3, 2010 at St. Thomas 1-0.

Scoreless Ties (2 in program history)

Jan. 14, 2010 vs. Trinity (Conn.)

Feb. 17, 2009 at UW-Stevens Point

EXTRA ATTACKER GOALS

GAC: March 18, 2011 vs.

Norwich (NCAA Semifinals, Rochester, N.Y.). Jenna Christensen scored in final minute of a 5-4 loss.

OPP: Jan. 9, 2005 at UW-River Falls. Gusties won 6-4.

SHORTHANDED GOALS

Scored a shorthanded goal

GAC: Dec. 2, 2011 vs. Augsburg. Mollie Carroll scored during an AUG power play. Gusties 9-0 win.

OPP: Nov. 19, 2011 at St.

Thomas. Christina Rozeske scored SH in second period. Gusties 3-2 win.

Scored two shorthanded goals

GAC: Nov. 22, 2008 at St. Olaf. Melissa Mackley scored two short-handed goals in the third period. Gusties won 4-2.

OPP: Never.

EMPTY NET GOALS

GAC: Jan. 27, 2012 at Concordia. Amanda

Cartony scored EN with :30 left. GA 4-1 win.

OPP: Feb. 18, 2012 at St. Olaf. Oles scored EN with :04 left in game. Oles won 5-2.

TEAM GOALS IN A PERIOD

Team scored 5 or more goals in a period

GAC: Jan. 21, 2011 at Saint Benedict.

Gusties scored five goals in the third period and won 8-1.

OPP: Dec. 3, 1998 at the University of Minnesota (Mariucci Arena). Gophers scored five goals in the first period and won 8-1.

PENALTY SHOTS

Scored on a penalty shot

GAC: Never.

OPP: March 19, 2011 vs. Middlebury (NCAA 3rd Place Game, Rochester, N.Y.). Penalty shot goal scored after Lindsey Hjelm checking penalty in the second period. Loss 5-0.

PENALTIES

Not penalized

GAC: Feb. 11, 2005 at St. Catherine. Gusties won 13-0.

OPP: Dec. 2, 2000 at St. Catherine. St. Kate's won 4-3.

Neither team was penalized

Jan. 30, 1998 at Saint Mary's. Gusties won 6-2.

HAT TRICKS

Last individual 3-goal game

GAC: Feb. 17, 2012 vs St. Olaf. Allie Schwab scored one even goal and two PP goals in Gusties 5-0 win.

OPP: March 18, 2011 vs. Norwich (NCAA Semifinals). Julie Fortier scored the first three goals of the game in a 5-4 Norwich victory.

Last individual 4-goal game

GAC: Dec. 2, 2011 at Augsburg. Allie Schwab scored three PP goals and an even goal in a 9-0 shutout.

OPP: Never.

All goals scored by one player

GAC: Never.

OPP: Dec. 2, 2006 at Hamline. Melanie Levielle scored all three goals in a 4-3 loss.

SHOTS ON GOAL

Fewer than 15 shots in a game

GAC: Dec. 3, 1998 at the University of Minnesota, 11 shots. Minnesota won 8-1.

OPP: Feb. 24, 2012 vs. Saint Ben's, 10 shots. GA 9-1 win.

Fewer than 20 shots in a game

GAC: Jan. 14, 2011 vs. Trinity, 18 shots. Scoreless 0-0 tie.

OPP: March 1, 2012 vs. Bethel, 15 shots.

40 or more shots in a game

GAC: March 1, 2012 vs. Bethel, 47 shots.

OPP: Dec. 10, 2010 at UW-River Falls, 40 shots. River Falls won 4-2.

50 or more shots in a game

GAC: Dec. 13, 2011 vs. UW-Superior, 53 shots. Gusties won 1-0 in overtime.

OPP: Nov. 23, 1998 vs. the University of Minnesota, 51 shots. Minnesota won 6-0.

60 or more shots in a game

GAC: Feb. 4, 2012 vs. Hamline, 62 shots. GA 2-1 win.

OPP: Feb. 5, 1998 at Boston College, 65 shots. BC won 10-1.

SINGLE GAME POINTS

Player had four points in a game

GAC: Mar. 11, 2011 at UW-River Falls.

Jenna Christensen scored two goals and two assists. Gusties won 4-1.

OPP: Mar. 18, 2011 vs. Norwich (NCAA Semifinals). Julie Fortier scored three goals with an assist in a 5-4 Norwich victory.

Player had five points in a game

GAC: Dec. 2, 2011 at Augsburg. Allie Schwab scored three PP goals and an even goal with an assist in a 9-0 shutout.

OPP: Mar. 18, 2005 vs. Middlebury. (NCAA Semifinals) Lorna Grifis scored two goals with three assists in a 7-3 Middlebury win.

Player had six or more points in a game

GAC: Feb. 11, 2005 at St. Catherine. Andrea Peterson scored two goals with six assists in a 13-0 win. (Most individual points in a game in program history)

OPP: Jan. 30, 1999 at Middlebury. Michelle Labbe scored three goals with three assists in a 8-0 Middlebury win.



2011-12 GUSTAVUS ADOLPHUS WOMEN'S HOCKEY GAME NOTES

Gustavus Adolphus Hockey Gustavus Adolphus Overall Team Statistics (as of Mar 07, 2012) All games

Overall: 23-2-2 Conf: 16-1-1 Home: 13-0-1 Away: 10-2-1 Neut: 0-0-0

TEAM STATISTICS	GAC	OPP
SHOT STATISTICS		
Goals-Shot attempts	127-1102	40-432
Shot pct.	.115	.093
Goals/Game	4.7	1.5
Shots/Game	40.8	16.0
Assists	168	52
POWER PLAYS		
Goals-Power Plays	38-121	9-98
Conversion Percent	.314	.092
Shot Attempts	224	90
Shot Percent	.170	.100
SHORT-HANDED		
Goals-Shot attempts	5-33	1-9
Shot Percent	.152	.111
GOAL BREAKDOWN		
Total Goals	127	40
Power Play	38	9
Short-handed	5	1
Empty net	2	1
Penalty	0	0
Unassisted	18	6
Overtime	2	0
Shootout	0	0
Delayed Penalty	0	0
PENALTIES		
Number	104	133
Minutes	211	269
Penalties/Game	3.9	4.9
Pen minutes/Game	7.8	10.0
Minor	94	117
Major	1	1
10-minute Misconduct	0	0
Game Misconduct	0	0
Gross Misconduct	0	0
Match	0	0
FACEOFFS (W-L)		
Faceoff W-L Pct.	.686	.314
SHOOTOUTS (Made-Att)		
	0-0	0-0
ATTENDANCE		
Total	3011	1777
Dates/Avg Per Date	14/215	13/137
Neutral Site #/Avg	0/0	

Goals by Period	1st	2nd	3rd	OT	Total
Gustavus Adolphus	33	49	43	2	127
Opponents	6	20	14	0	40

Shots by Period	1st	2nd	3rd	OT	Total
Gustavus Adolphus	333	397	361	11	1102
Opponents	124	157	139	12	432

Saves by Period	1st	2nd	3rd	OT	Total
Gustavus Adolphus	118	137	125	12	392
Opponents	299	348	319	9	975



2011-12 GUSTAVUS ADOLPHUS WOMEN'S HOCKEY GAME NOTES

Gustavus Adolphus Hockey Gustavus Adolphus Overall Individual Statistics (as of Mar 07, 2012) All games

Overall: 23-2-2 Conf: 16-1-1 Home: 13-0-1 Away: 10-2-1 Neut: 0-0-0

			Shots						Penalties					Goals										
##	Player	gp	g	a	pts	sh	sh%	+-	pen-min	min	maj	oth	pp	sh	fg	gw	gt	ot	ht	pn	ua	blk		
21	Allie Schwab	27	22	19	41	133	.165	+33	12-24	12	0	0	8	0	1	7	0	0	3	0	1	0		
8	Mollie Carroll	27	15	22	37	69	.217	+29	3-9	2	1	0	3	2	3	3	0	0	0	0	3	0		
18	Carolyn Draayer	27	18	8	26	93	.194	+12	2-4	2	0	0	5	0	3	6	1	1	0	0	3	1		
9	Amanda Cartony	25	13	13	26	61	.213	+18	3-6	3	0	0	5	1	2	0	0	0	0	0	2	0		
17	Lindsey Hjelm	27	9	14	23	133	.068	+28	26-52	23	0	0	4	0	3	1	0	0	0	0	4	0		
16	Kelsey Kennedy	27	1	20	21	45	.022	+36	4-8	3	0	0	1	0	0	1	0	0	0	0	0	1		
10	Courtney Boucher	27	7	10	17	88	.080	+8	4-8	4	0	0	1	0	2	3	0	1	0	0	1	0		
2	Meagan Wanecke	27	8	7	15	73	.110	+10	7-14	7	0	0	1	2	1	1	0	0	0	0	1	0		
4	Maddie Bergh	27	0	14	14	65	.000	+20	5-10	3	0	0	0	0	0	0	0	0	0	0	0	3		
19	Kelly Thotland	27	5	8	13	59	.085	+13	8-16	7	0	0	4	0	1	0	0	0	0	0	1	1		
5	Jenna Christensen	27	7	5	12	59	.119	+20	4-8	4	0	0	0	0	1	0	0	0	0	0	1	0		
22	Marissa Brandt	26	5	6	11	18	.278	+7	1-2	1	0	0	2	0	1	0	0	0	0	0	0	0		
11	Jess Harren	24	4	5	9	28	.143	+12	3-6	3	0	0	1	0	2	0	0	0	0	0	0	0		
14	Melissa Doyle	27	3	3	6	39	.077	+12	1-2	1	0	0	0	0	1	1	1	0	0	0	1	0		
23	Kayla Ingbretson	18	2	4	6	15	.133	+7	2-4	2	0	0	1	0	0	0	0	0	0	0	0	0		
15	Leah Johnson	16	4	1	5	27	.148	+2	2-4	2	0	0	1	0	1	0	0	0	0	0	0	0		
20	Grace Olson	21	2	3	5	18	.111	+7	1-2	0	0	0	1	0	0	0	0	0	0	0	0	0		
6	Whitney Schaff	18	0	3	3	15	.000	+5	3-6	3	0	0	0	0	0	0	0	0	0	0	0	1		
3	Gina DeNucci	21	1	1	2	24	.042	+7	3-6	3	0	0	0	0	1	0	0	0	0	0	0	0		
20	Gracie Olson	1	1	0	1	1	1.000	+1	0-0	0	0	0	0	0	1	0	0	0	0	0	0	0		
7	Beth Olson	8	0	1	1	3	.000	0	3-6	2	0	0	0	0	0	0	0	0	0	0	0	0		
12	Taylor Skelton	9	0	1	1	8	.000	+1	2-4	2	0	0	0	0	0	0	0	0	0	0	0	0		
G	G	1	0	0	0	0	.000	0	0-0	0	0	0	0	0	0	0	0	0	0	0	0	0		
24	Heidi Korin	2	0	0	0	3	.000	+2	2-4	2	0	0	0	0	0	0	0	0	0	0	0	0		
13	Emily Raber	3	0	0	0	1	.000	-2	1-2	1	0	0	0	0	0	0	0	0	0	0	0	0		
TM	TEAM	3	0	0	0	24	.000	0	2-4	2	0	0	0	0	0	0	0	0	0	0	0	75		
Total		27	127	168	295	1102	.115	+288	104-211	94	1	0	38	5	24	23	2	2	3	0	18	82		
Opponents		27	40	52	92	432	.093	-	133-269	117	1	0	9	1	3	2	0	0	0	0	6	250		

##	Goalie	gp-gs	Goal average			Saves		Record				Goals allowed				
			minutes	ga	avg	saves	pct	w	l	t	sho	pp	sh	en	pen	sog
1	Danielle Justice	20-19	1164:57	22	1.13	283	.928	17	0	2	4	5	1	0	0	0
35	Marah Sobczak	10-7	473:21	16	2.03	109	.872	5	2	0	2	4	0	0	0	0
30	Katherine Jorgenson	1-0	20:00	1	3.00	0	.000	0	0	0	0	0	0	0	0	0
TM	EMPTY NET	3-0	1:30	1	-	0	.000	0	0	0	2	0	0	1	0	0
	Total	27-0	1659:48	40	1.45	392	.907	22	2	2	8	9	1	1	0	0
	Opponents	27-0	1639:13	127	4.65	975	.885	2	22	2	0	38	5	2	0	0



2011-12 GUSTAVUS ADOLPHUS WOMEN'S HOCKEY GAME NOTES

Gustavus Adolphus Hockey Gustavus Adolphus Combined Team Statistics (as of Mar 07, 2012) All games

Date	Opponent	Score	Att.
Nov 04	CONCORDIA(WI)	w 7-1	257
Nov 05	ST. NORBERT COLLEGE	w 8-1	137
* Nov 11	at Bethel University	w 5-1	157
* Nov 12	BETHEL UNIVERSITY	w 6-3	209
* Nov 18	ST. THOMAS	w 5-3	281
* Nov 19	at St. Thomas	w 3-2	125
* 12/02/11	at Augsburg College	w 9-0	159
* Dec 03	AUGSBURG COLLEGE	w 7-2	174
Dec 06	#7 UW-RIVER FALLS	Tot 1-1	129
Dec 13	#9 UW-SUPERIOR	Wot 1-0	174
01/06/12	at UW-Stevens Point	w 6-0	115
01/07/12	at UW-Stevens Point	w 5-2	97
* Jan 20	at St. Kate's	w 7-0	160
* Jan 21	ST. KATE'S	w 3-0	137
* Jan 27	at #9 Concordia-Moorhead	w 4-1	155
* Jan 28	at #9 Concordia-Moorhead	Tot 3-3	117
Jan 31	at UW-Superior	L 1-5	112
* Feb 03	at Hamline University	w 3-2	250
* Feb 04	HAMLIN UNIVERSITY	w 2-1	162
* Feb 10	at Saint Mary's	w 8-2	97
* Feb 11	SAINT MARY'S	w 5-0	139
* Feb 17	ST. OLAF	w 5-0	287
* Feb 18	at St. Olaf	L 2-5	133
* Feb 24	SAINT BENEDICT	w 9-1	139
* Feb 25	at Saint Benedict	w 7-2	100
Mar 01	BETHEL UNIVERSITY	Wot 1-0	249
Mar 03	CONCORDIA-MOORHEAD	w 4-2	537

TEAM STATISTICS	GAC	OPP
SHOT STATISTICS		
Goals-Shot attempts	127-1102	40-432
Shot pct.	.115	.093
Goals/Game	4.7	1.5
Shots/Game	40.8	16.0
POWER PLAYS		
Goals-Power Plays	38-121	9-98
Conversion Percent	.314	.092
Shot Attempts	224	90
Shot Percent	.170	.100
SHORT-HANDED		
Goals-Shot attempts	5-33	1-9
Shot Percent	.152	.111
GOAL BREAKDOWN		
Power Play	38	9
Short-handed	5	1
Empty net	2	1
Penalty	0	0
Unassisted	18	6
Overtime	2	0
Shootout	0	0
Delayed Penalty	0	0
PENALTIES		
Number	104	133
Minutes	211	269
Penalties/Game	3.9	4.9
Pen minutes/Game	7.8	10.0
FACEOFFS (W-L)	900-412	412-900
Faceoff W-L Pct.	.686	.314
SHOOTOUTS (Made-Att)	0-0	0-0

Record:	Overall	Home	Away	Neutral
ALL GAMES	23-2-2	13-0-1	10-2-1	0-0-0
CONFERENCE	16-1-1	8-0-0	8-1-1	0-0-0
NON-CONFERENCE	7-1-1	5-0-1	2-1-0	0-0-0

#	Player	gp	g	a	pts	sh	sh%	pen-min	pp	sh
21	Allie Schwab	27	22	19	41	133	.165	12-24	8	0
8	Mollie Carroll	27	15	22	37	69	.217	3-9	3	2
18	Carolyn Draayer	27	18	8	26	93	.194	2-4	5	0
9	Amanda Cartony	25	13	13	26	61	.213	3-6	5	1
17	Lindsey Hjelm	27	9	14	23	133	.068	26-52	4	0
16	Kelsey Kennedy	27	1	20	21	45	.022	4-8	1	0
10	Courtney Boucher	27	7	10	17	88	.080	4-8	1	0
2	Meagan Wanecke	27	8	7	15	73	.110	7-14	1	2
4	Maddie Bergh	27	0	14	14	65	.000	5-10	0	0
19	Kelly Thotland	27	5	8	13	59	.085	8-16	4	0
5	Jenna Christensen	27	7	5	12	59	.119	4-8	0	0
22	Marissa Brandt	26	5	6	11	18	.278	1-2	2	0
11	Jess Harren	24	4	5	9	28	.143	3-6	1	0
14	Melissa Doyle	27	3	3	6	39	.077	1-2	0	0
23	Kayla Ingbretson	18	2	4	6	15	.133	2-4	1	0
15	Leah Johnson	16	4	1	5	27	.148	2-4	1	0
20	Grace Olson	21	2	3	5	18	.111	1-2	1	0
6	Whitney Schaff	18	0	3	3	15	.000	3-6	0	0
3	Gina DeNucci	21	1	1	2	24	.042	3-6	0	0
20	Gracie Olson	1	1	0	1	1	1.000	0-0	0	0
7	Beth Olson	8	0	1	1	3	.000	3-6	0	0
12	Taylor Skelton	9	0	1	1	8	.000	2-4	0	0
G	G	1	0	0	0	0	.000	0-0	0	0
24	Heidi Korin	2	0	0	0	3	.000	2-4	0	0
13	Emily Raber	3	0	0	0	1	.000	1-2	0	0
TM	TEAM	3	0	0	0	24	.000	2-4	0	0
Total		27	127	168	295	1102	.115	104-211	38	5
Opponents		27	40	52	92	432	.093	133-269	9	1

#	Goalie	gp	min	ga	gaavg	saves	save%	w-l-t
1	Danielle Justice	20	1164:57	22	1.13	283	.928	17-0-2
35	Marah Sobczak	10	473:21	16	2.03	109	.872	5-2-0
30	Katherine Jorgenson	1	20:00	1	3.00	0	.000	0-0-0
TM	EMPTY NET	3	1:30	1	-	0	.000	0-0-0
Total		27	1659:48	40	1.45	392	.907	22-2-2
Opponents		27	1639:13	127	4.65	975	.885	2-22-2

Attendance Summary	GAC	Opponent
Total	3011	1777
Dates/Avg Per Date	14/215	13/137
Neutral Site #/Avg	0/0	

Goals by Period	1st	2nd	3rd	OT	Total
Gustavus Adolphus	33	49	43	2	127
Opponents	6	20	14	0	40

Shots by Period	1st	2nd	3rd	OT	Total
Gustavus Adolphus	333	397	361	11	1102
Opponents	124	157	139	12	432

Saves by Period	1st	2nd	3rd	OT	Total
Gustavus Adolphus	118	137	125	12	392
Opponents	299	348	319	9	975



2011-12 GUSTAVUS ADOLPHUS WOMEN'S HOCKEY GAME NOTES

2011-12 GUSTAVUS WOMEN'S HOCKEY ROSTER



Top row (L to R): Melissa Doyle, Courtney Boucher,, Amanda Cartony, Kelly Thotland, Taylor Skelton, Maddie Bergh, Emily Raber, Kelsey Kennedy, Kayla Ingbretson, Leah Johnson

Middle row (L to R): Assistant Coach Steve Carroll, Assitant Coach Matt Carroll, Carolyn Draayer, Beth Olson, Heidi Korin, Assistant Captain Lindsey Hjelm, Marissa Brandt, Assistant Captain Jenna Christensen, Athletic Trainer Mitch Brockenstedt, Head Coach Mike Carroll, Assistant Coach Kirstin Peterson

Front row (L to R): Marah Sobczak, Assistant Captain Jess Harren, Whitney Schaff, Captain Mollie Carroll, Gina DeNucci, Danielle Justice, Grace Olson, Allie Schwab, Meagan Wanecke, Katherine Jorgenson

<u>NO.</u>	<u>NAME (pronunciation)</u>	<u>POS</u>	<u>YR</u>	<u>HGT</u>	<u>HOMETOWN</u>	<u>HIGH SCHOOL</u>
1	Danielle Justice	G	SR	5-3	Alexandria, Minn.	Jefferson
2	Meagan Wanecke (WOHN-ah-key)	F	JR	5-4	Delafield, Wis.	Kettle Mouraine
3	Gina DeNucci (DUH-nu-chi)	D	SR	5-7	Chanhassen, Minn.	Minnetonka
4	Maddie Bergh	D	SO	5-4	Eden Prairie, Minn.	Benilde St. Margaret's
5	Jenna Christensen *	F	JR	5-6	Albert, Lea, Minn.	Albert Lea
6	Whitney Schaff (SHAAF)	F	SR	5-2	Cambridge, Minn.	Cambridge
7	Beth Olson	D	FY	5-9	Warroad, Minn.	Warroad
8	Mollie Carroll **	F	SR	5-4	Eagan, Minn.	Eagan
9	Amanda Cartony	F	SO	5-7	Stillwater, Minn.	Stillwater
10	Courtney Boucher (BOO-shay)	F	FY	5-7	Hastings, Minn.	Hastings
11	Jess Harren * (HAIR-en)	D	JR	5-7	Woodbury, Minn.	Hill-Murray
12	Taylor Skelton	F	FY	5-7	Ely, Minn.	Ely
13	Emily Raber (RAY-ber)	D	FY	5-4	Buena Park, Calif.	John. F. Kennedy
14	Melissa Doyle (DOH-yell)	F	SO	5-0	White Bear Lake, Minn.	Hill-Murray
15	Leah Johnson	F	FY	5-4	Chanhassen, Minn.	Chaska
16	Kelsey Kennedy	D	JR	5-3	Eagan, Minn.	Eagan
17	Lindsey Hjelm * (HELM)	D	JR	5-7	North Oaks, Minn.	Mounds View
18	Carolyn Draayer (DRAY-er)	F	FY	5-6	Deephaven, Minn.	Minnetonka
19	Kelly Thotland	D	FY	5-3	Edina, Minn.	Edina
20	Grace Olson	F	SR	5-7	Apple Valley, Minn.	Holy Angels
21	Allie Schwab	F	SR	5-8	Stillwater, Minn.	Stillwater
22	Marissa Brandt	F	FY	5-6	Vadnais Heights, Minn.	Hill-Murray
23	Kayla Ingbretson	F	JR	5-4	Mound, Minn.	Mound-Westonka
24	Heidi Korin	D	FY	5-8	Corcoran, Minn.	Wayzata
30	Katherine Jorgenson	G	SO	5-9	Colleyville, Texas	Kent School
35	Marah Sobczak (SAHB-check)	G	SO	5-4	Stillwater, Minn.	Stillwater

** Denotes Captain

* Denotes Assistant Captain

Head Coach: Mike Carroll (13th Season)

Assistant Coach: Stephen Carroll (12th season)

Assistant Coach: Kirstin Peterson (First season)

Assistant Coach: Matt Carroll (First season)