



# GUSTAVUS

## Women's Hockey



### 2011-12 Schedule/Results

Date	Opponent	Time/Result
11/4	Concordia Univ.	W, 7-1
11/5	St. Norbert	W, 8-1
11/11	Bethel*	W, 5-1
11/12	Bethel*	W, 6-3
11/18	St. Thomas*	W, 5-3
11/19	St. Thomas*	W, 3-2
12/2	Augsburg*	W, 9-0
12/3	Augsburg*	W, 7-2
12/6	UW-River Falls	T, 1-1 (OT)
12/13	UW-Superior	W, 1-0 (OT)
1/6	UW-Stevens Point	W, 6-0
1/7	UW-Stevens Point	W, 5-2
1/20	St. Catherine*	W, 7-0
<b>1/21</b>	<b>St. Catherine*</b>	<b>W, 3-0</b>
1/27	Concordia*	7:00 p.m.
1/28	Concordia*	2:00 p.m.
1/31	UW-Superior	7:00 p.m.
2/3	Hamline*	7:00 p.m.
<b>2/4</b>	<b>Hamline*</b>	<b>2:00 p.m.</b>
2/10	Saint Mary's*	7:00 p.m.
<b>2/11</b>	<b>Saint Mary's*</b>	<b>2:00 p.m.</b>
<b>2/17</b>	<b>St. Olaf*</b>	<b>7:00 p.m.</b>
2/18	St. Olaf*	2:00 p.m.
<b>2/24</b>	<b>Saint Benedict*</b>	<b>7:00 p.m.</b>
2/25	Saint Benedict*	1:15 p.m.

Home Games in bold; all times Central

\* MIAC Game

### Game Notes



**No. 4 Gustavus**  
(13-0-1, 8-0-0 MIAC)  
vs.  
**No. 9 Concordia**  
(9-2-2, 5-1-2 MIAC)



Jan. 27, 2012 - 7:00 p.m. - Moorhead Sports Center - Moorhead, MN

[Live Audio](#)

<http://client.stretchinternet.com/client/cord.portal#>

[Live Statistics](#)

<http://www.cord.edu/dept/sports/livestats2/xlive.htm>

Jan. 28, 2012 - 2:00 p.m. - Moorhead Sports Center - Moorhead, MN

[Live Audio](#)

<http://client.stretchinternet.com/client/cord.portal#>

[Live Statistics](#)

<http://www.cord.edu/dept/sports/livestats2/xlive.htm>

**THE MATCHUP:** The Gustavus women's hockey team is set to take on the Concordia Cobbers on Friday and Saturday in a weekend away series. The Gusties come in ranked No. 4 according to the latest United States College Hockey Online (USCHO.com) poll with an undefeated 13-0-1 overall record and 8-0-0 mark in the MIAC. The Three Crowns are the only remaining undefeated team in all Division III. The Cobbers are ranked No. 9 as the second best team in the western region with a 9-2-2 overall record and 5-1-2 mark in conference play.

**MEDIA COVERAGE:** Both Friday and Saturday's games will be broadcast live online with live audio and statistics. Use the links above to follow the action. For any questions or comments before, during or after the games, feel free to contact CJ Siewert via email or phone with the contact information provided in the gray box to the left.

**TICKET INFORMATION:** Friday - \$7.00-Adults, \$4.00-Students  
Saturday - \$7.00-Adults, \$4.00-Students.

#### Primary Women's Hockey Contact

Assistant SID.....CJ Siewert  
Email.....csiewer3@gustavus.edu  
Office Phone.....507-933-8411  
Cell Phone.....507-779-4135

#### Secondary Contact

Sports Info Director...Ethan Armstrong  
Email.....earmstr2@gustavus.edu  
Office Phone.....507-933-7647  
Cell Phone.....320-815-2351

**GAC vs. CC Comparison**  
(2011-12 overall per game averages  
and league standing )

<u>GAC</u>		<u>CC</u>
5.21 (1st)	<b>Goals For</b>	3.69 (2nd)
1.14 (1st)	<b>Goals Against</b>	2.92 (5th)
24.6% (4th)	<b>Power Play</b>	30.6% (1st)
94.2% (1st)	<b>Penalty Kill</b>	80.0% (10th)
8.1 (8th)	<b>Penalty Minutes</b>	11.1 (2nd)

**Gustavus vs. Concordia**  
All-Time Series

**All-Time: 25-1-1**  
**Last Ten: 9-0-1**

<u>Date</u>	<u>Location</u>	<u>Result</u>
3/3/11	St. Peter	W 5-2*
2/5/11	St. Peter	T 3-3 OT
2/4/10	St. Peter	W 4-2
2/6/10	Moorhead	W 4-0
2/5/10	Moorhead	W 8-4
2/14/09	St. Peter	W 5-0
2/13/09	St. Peter	W 7-0
2/23/08	Moorhead	W 7-1
2/22/08	Moorhead	W 3-0
11/18/06	St. Peter	W 4-1

\*- MIAC Playoff Semifinal

**Career Scoring vs. St. Catherine**

<u>Player</u>	<u>GP</u>	<u>G</u>	<u>A</u>	<u>Pts.</u>
Allie Schwab	7	8	8	16
Mollie Carroll	7	3	3	6
Lindsey Hjelm	5	3	3	6
Meagan Wanecke	4	2	3	5

<u>Goalies</u>	<u>GP-GS</u>	<u>W-L-T</u>	<u>GAA</u>	<u>SV%</u>
D. Justice	5-5	4-0-1	1.40	.926

**MEET THE COACHING STAFFS...** Gustavus Head Coach Mike Carroll is in his 13th season at the helm for the Gusties. He has compiled an overall record of 276-64-21 in 13 seasons on the bench and has the most coaching victories in the history of the program. Carroll, an Edina, Minn. native, competed in hockey and baseball at Minnesota State University-Mankato. After graduating with a degree in municipal recreation in 1982, Carroll played professional baseball in the Montreal Expos organization for two years.

Carroll is assisted by Steve Carroll (MSU-Mankato '81) - named one of the 10 greatest Mavericks in their men's hockey program; Kirstin Peterson (Gustavus '11), a three-time All-American for the Gustavus women's hockey program from 2008-11; and Matt Carroll, Mike's son.

Brett Bruininks is in his second season at the helm for the Cobbers this year after a 15-8-4 record a year ago. In his short tenure, the Cobbers have already enjoyed major success. Last season, Concordia made it to the semifinals of the conference tournament for the first time since the 2000-01 season. The 15-win season was also a program record for victories in a single season. Thus far, the Cobbers have compiled nine wins and enjoy a spot in the top 10 in the nation. Last season, Bruininks' squad broke a string of 15 consecutive wins by the Gusties after tying them in St. Peter 3-3.

**ABOUT CONCORDIA...** Concordia is picking up right where they left off last season. A second place standing in the MIAC and No. 9 in the nation has the Cobbers in prime position for a championship season. Concordia is right behind Gustavus in scoring with 3.69 G/GM. The Cobbers are fifth in the MIAC in defense, giving up 2.92 G/GM.

Concordia has been enjoying over a year's worth of successes. Earlier in the season, the Cobbers enjoyed their first series sweep of St. Thomas. 2011 marked the best calendar year in Concordia women's hockey history with an 18-3-4 mark. However, the most notable feat might be that this is the first season in Cobber history the team has cracked the top 10 nationally.

This season, the Cobbers are led offensively by senior forward Katelyn Dold with 20 points on eight goals and a team-leading 12 assists. Sophomore forward Abby Taffe leads the team with 11 goals. Dold and Taffe lead the team in power play points with nine apiece.

Tamara Twite has recorded the bulk of minutes played in goal for the Cobbers. In 589:16 and 10 games played, the second-year goalie has posted a 2.95 goals against average, .882 save percentage and a 6-2-2 record.

As a team, Concordia is averaging 3.69 goals per game, while allowing 2.92 per game in 13 match-ups. In the power play, the Cobbers have scored 19 times in 62 tries (30.6-percent), killed 52-of-65 (80.0-percent) attempts by their opponents and have a combined special teams average of 55.9-percent.

**2011 MIAC SEMIFINAL...** Was the farthest Concordia had ever gone since 2000-01 but continuing on wasn't meant to be. The Cobbers met the Gusties in St. Peter in the MIAC Playoff Semifinals last March and took an early 1-0 lead. However, three unanswered goals by the Gusties gave the women some cushion and they went on to win 5-2.

**NATIONAL RECOGNITION...** This weekend's games will include four of the top 10 scorers in Division III women's hockey. Allie Schwab is at the top with 1.93 P/GM, including a MIAC-leading 15 goals. Gustavus' Mollie Carroll is third in the nation with 1.64 P/GM. Concordia's Katelyn Dold and Abby Taffe are 6th and 9th in the nation with 1.54 P/GM and 1.46 P/GM, respectively.

**TOP 10...** This weekend's series will be the third and fourth games for the Gusties against a top 10 opponent. Thus far, the Gusties are 1-0-1 against top 10 teams. In December, the team tied then-No. 7 UW-River Falls 1-1 (OT) and a week later beat then-No. 9 UW-Superior 1-0 (OT). Both contests were held in St. Peter. Next Tuesday the Gusties will travel to Superior, Wis. to take on the Yellowjackets in their fifth contest against a top 10 team.

**HJELM, THE PENALTY QUEEN...** Junior defender Lindsey Hjelm is alone at the top in the program record book for career penalties (72) and penalty minutes (144) after being flagged for a tripping penalty last Friday against St. Kate's. Last season, the North Oaks, Minn. native tied the individual season record for penalties (31) and penalty minutes (62). She has 16 penalties for 32 minutes through 14 games this year.

**QUICK OFF THE START...** Both the Cobbers and the Gusties typically get off to quick starts in their games. The two are ranked one-two in the MIAC when it comes to 1st period goals. The Cobbers have scored 14 of their season's 48 goals in the first period and the Gusties have scored 21 of their season's 73 goals in the first period.

**HIGH SCORING AFFAIR?** Fans might be in for a shoot-out this weekend as the Gusties and Cobbers are two of the nation's highest scoring teams. Gustavus averages 5.21 goals per game, which ranks fourth in Division III, while Concordia averages 3.69 for sixth place.

**THIS WEEK IN THE MIAC...**

**Friday, Jan. 27:**

St. Olaf at St. Thomas 7:00 p.m.  
 Saint Mary's at Augsburg 7:00 p.m.  
 St. Catherine at Bethel 7:00 p.m.  
 Saint Benedict at Hamline 7:00 p.m.

**Saturday, Jan. 28:**

Hamline at Saint Benedict 2:00 p.m.  
 St. Thomas at St. Olaf 2:00 p.m.  
 Bethel at St. Catherine 2:00 p.m.  
 Augsburg at Saint Mary's 2:00 p.m.

**USCHO.COM Div. III Women's Poll**

(Jan. 23, 2012)

RK	Team	Record	Pts.	PR
1	Norwich (9)	14-1-1	143	1
2	Rochest. IT (2)	16-1-1	126	2
3	Elmira (2)	15-1-1	119	3
4	<b>Gustavus (2)</b>	<b>13-0-1</b>	<b>96</b>	<b>5</b>
4	Middlebury	11-1-2	96	4
6	Plattsburgh	12-3-2	80	6
7	Amherst	12-3-0	72	7
8	UW-River Falls	13-3-2	46	8
9	<b>Concordia (MN)</b>	<b>9-2-2</b>	<b>25</b>	<b>9</b>
10	UW-Superior	9-5-2	16	10

Others receiving votes: Lake Forest (2), Manhattanville (2), St. Scholastica (1), St. Thomas (1).

**MIAC Standings**

School	MIAC	Points	Overall
<b>Gustavus</b>	<b>8-0-0</b>	<b>16</b>	<b>13-0-1</b>
Concordia	5-1-2	12	9-2-2
St. Olaf	5-2-1	11	5-7-3
St. Catherine	3-3-2	8	7-5-2
Bethel	4-4-0	8	6-7-2
St. Thomas	3-4-1	7	6-6-2
Saint Benedict	1-4-3	5	3-9-3
Hamline	2-5-1	5	6-7-2
Saint Mary's	1-5-2	4	4-8-3
Augsburg	2-6-0	4	5-6-4

**MIAC Individual Leaders  
(Games through Jan. 25)**

<b>Point Scoring:</b>	Allie Schwab (GAC)	1.93 PPG
<b>Goal Scoring:</b>	Allie Schwab (GAC)	1.07 GPG
<b>Assist Scoring:</b>	Anna Carlson (BU)	1.07 APG
<b>Power Play Pts:</b>	Anna Carlson (BU)	1-10-11
<b>PP Goals:</b>	Abby Taffe (CC)	6 (.46 GPG)
<b>SH Points:</b>	Amanda Cartony (GAC)	1-1-2
	Kaylee Keys (UST)	2-0-2
	Corinne Henning (HAM)	1-1-2
	Christina Rozeske (UST)	2-0-2
	Rachel Hennessy (AUG)	1-1-2
	Kendall Christian (AUG)	0-2-2
<b>SH Goals:</b>	Christina Rozeske (UST)	2
	Kaylee Keys (UST)	2
<b>GW Goals:</b>	Carolyn Draayer (GAC)	5
<b>Defense Score:</b>	Anna Carlson (BU)	2-16-18
<b>Frosh Score:</b>	Rachel Hennessy (AUG)	15-4-19
<b>GAA:</b>	Danielle Justice (GAC)	0.90
<b>Save %:</b>	Nicole Jones (HU)	.948
<b>Winning %:</b>	Marah Sobczak (GAC)	5-0-0 (1.000)



**THE LAST TIME IT HAPPENED...**

**COMEBACKS**

**GAC won when trailing after two periods**

Nov. 22, 2008 vs. St. Olaf. Gusties scored three in the third to win 4-2.

**Opponent won when trailing after two periods**

Nov. 7, 2008 vs. Adrian. Adrian scored one in the third and the game-winner in OT to win 2-1.

**Overcame 1-goal deficit and won**

**GAC:** March 3, 2011 vs. Concordia (MIAC Semifinals). Gusties trailed 1-0 in the first but scored three unanswered goals in the same period and won 5-2.

**OPP:** Jan. 28, 2011 at St. Catherine. St. Kate's replied with two in the first for a 2-1 win.

**Overcame 2-goal deficit and won**

**GAC:** Nov. 17, 2006 vs. Concordia. GAC answered with a goal in the second and two in the third for a 3-2 victory.

**OPP:** Feb. 2, 2006 at Plattsburgh. Plattsburgh scored three unanswered (2 in the second, 1 in the third) to win 3-2.

**Overcame a 3-goal deficit and won**

**GAC:** March 1, 1998 vs. University of Minnesota Club. Gusties scored one in the second and three in the third to win 4-3.

**OPP:** Never

**OVERTIME GAMES**

**Won overtime game**

**GAC:** Dec. 13, 2011 vs. UW-Superior. Carolyn Draayer scored game-winner for 1-0 victory.

**OPP:** Nov. 7, 2008 at Adrian 2-1.

**Tied overtime game**

Dec. 6, 2011 vs. UW-River Falls

**SERIES SWEEPS**

**Swept a 2-game regular season home and away series**

**GAC:** Nov. 18-19, 2011 vs. St. Thomas. (5-3 at St. Peter, 3-2 at Mendota Heights)

**OPP:** Nov. 21-22, 2003 vs. St. Thomas. (3-1 at St. Paul, 4-2 at St. Peter)

**Swept a 2-game regular season home series**

**GAC:** Feb. 13-14, 2009 vs. Concordia. (7-0, 5-0)

**OPP:** Never

**Swept a 2-game regular season away series**

**GAC:** Nov. 5-6, 2010 at Concordia-Wisconsin. (5-0, 6-0)

**OPP:** Never. (MIAC Playoffs: March 10-11, 2000 at Augsburg. (4-1, 2-1))

**SHUTOUTS**

**Last Shutout**

**GAC:** Jan. 21 vs. St. Kate's, 3-0.

**OPP:** Dec. 3, 2010 at St. Thomas 1-0.

**Last Shutout in St. Peter**

**GAC:** Jan. 21 vs. St. Kate's, 3-0.

**OPP:** March 19, 2010 vs. Amherst 4-0. (NCAA Semifinals)

**Last Road Shutout**

**GAC:** Jan. 20 at St. Kate's, 7-0.

**OPP:** Dec. 3, 2010 at St. Thomas 1-0.

**Scoreless Ties (2 in program history)**

Jan. 14, 2010 vs. Trinity (Conn.)

Feb. 17, 2009 at UW-Stevens Point

**EXTRA ATTACKER GOALS**

**GAC:** March 18, 2011 vs. Norwich (NCAA Semifinals, Rochester, N.Y.). Jenna Christensen scored in final minute of a 5-4 loss.

**OPP:** Jan. 9, 2005 at UW-River Falls. Gusties won 6-4.

**SHORTHANDED GOALS**

**Scored a shorthanded goal**

**GAC:** Dec. 2, 2011 vs. Augsburg. Mollie Carroll scored during an AUG power play. Gusties 9-0 win.

**OPP:** Nov. 19, 2011 at St. Thomas. Christina Rozeske scored SH in second period. Gusties 3-2 win.

**Scored two shorthanded goals**

**GAC:** Nov. 22, 2008 at St. Olaf. Melissa Mackley scored two short-handed goals in the third period. Gusties won 4-2.

**OPP:** Never.

**EMPTY NET GOALS**

**GAC:** January 7, 2011 vs. UW-Stevens Point. Gusties scored with :30 remaining in regulation in a 5-2 win.

**OPP:** Dec. 10, 2010 at UW-River Falls. River Falls scored with :12 remaining in regulation and won 4-2.

**TEAM GOALS IN A PERIOD**

**Team scored 5 or more goals in a period**

**GAC:** Jan. 21, 2011 at Saint Benedict. Gusties scored five goals in the third period and won 8-1.

**OPP:** Dec. 3, 1998 at the University of Minnesota (Mariucci Arena). Gophers scored five goals in the first period and won 8-1.

**PENALTY SHOTS**

**Scored on a penalty shot**

**GAC:** Never.

**OPP:** March 19, 2011 vs. Middlebury (NCAA 3rd Place Game, Rochester, N.Y.). Penalty shot goal scored after Lindsey Hjelm checking penalty in the second period. Middlebury won 5-0.

**PENALTIES**

**Not penalized**

**GAC:** Feb. 11, 2005 at St. Catherine. Gusties won 13-0.

**OPP:** Dec. 2, 2000 at St. Catherine. St. Kate's won 4-3.

**THE LAST TIME IT HAPPENED...**

**Neither team was penalized**  
Jan. 30, 1998 at Saint Mary's.  
Gusties won 6-2.

**HAT TRICKS**

**Last individual 3-goal game**

**GAC:** Jan. 6, 2012 at UW-Stevens Point. Allie Schwab scored two even goals and a PP goal in Gusties 6-0 win.

**OPP:** March 18, 2011 vs. Norwich (NCAA Semifinals). Julie Fortier scored the first three goals of the game in a 5-4 Norwich victory.

**Last individual 4-goal game**

**GAC:** Dec. 2, 2011 at Augsburg. Allie Schwab scored three PP goals and an even goal in a 9-0 shutout.

**OPP:** Never.

**All goals scored by one player**

**GAC:** Never.

**OPP:** Dec. 2, 2006 at Hamline. Melanie Levielle scored all three goals in a 4-3 loss.

**SHOTS ON GOAL**

**Fewer than 15 shots in a game**

**GAC:** Dec. 3, 1998 at the University of Minnesota, 11 shots. Minnesota won 8-1.

**OPP:** Jan. 21, 2012 vs. St. Kate's. 10 shots.

**Fewer than 20 shots in a game**

**GAC:** Jan. 14, 2011 vs. Trinity, 18 shots. Scoreless 0-0 tie.

**OPP:** Jan. 20 at St. Kate's. 17 shots.

**40 or more shots in a game**

**GAC:** Nov. 12, 2011 vs. Bethel, 40 shots. Gusties won 6-3.

**OPP:** Dec. 10, 2010 at UW-River Falls, 40 shots. River Falls won 4-2.

**50 or more shots in a game**

**GAC:** Dec. 13, 2011 vs. UW-Superior, 53 shots. Gusties won 1-0 in overtime.

**OPP:** Nov. 23, 1998 vs. the University of Minnesota, 51 shots. Minnesota won 6-0.

**60 or more shots in a game**

**GAC:** Dec. 3, 2011 vs. Augsburg, 64 shots. Gusties won 7-2.

**OPP:** Feb. 5, 1998 at Boston College, 65 shots. BC won 10-1.

**SINGLE GAME POINTS**

**Player had four points in a game**

**GAC:** Mar. 11, 2011 at UW-River Falls. Jenna Christensen scored two goals and two assists. Gusties won 4-1.

**OPP:** Mar. 18, 2011 vs. Norwich (NCAA Semifinals). Julie Fortier scored three goals with an assist in a 5-4 Norwich victory.

**Player had five points in a game**

**GAC:** Dec. 2, 2011 at Augsburg. Allie Schwab scored three PP goals and an even goal with an assist in a 9-0 shutout.

**OPP:** Mar. 18, 2005 vs. Middlebury. (NCAA Semifinals) Lorna Grifis scored two goals with three assists in a 7-3 Middlebury win.

**Player had six or more points in a game**

**GAC:** Feb. 11, 2005 at St. Catherine. Andrea Peterson scored two goals with six assists in a 13-0 win. (Most individual points in a game in program history)

**OPP:** Jan. 30, 1999 at Middlebury. Michelle Labbe scored three goals with three assists in a 8-0 Middlebury win.



**PROGRAM RECORDS**

**All-Time Team Season Records**

**Most wins:** 25; 04-05, 06-07, 07-08

**Fewest wins:** 14; 02-03

**Most losses:** 12; 97-98

**Fewest losses:** 3; 06-07, 07-08

**Most shutouts:** 13; 04-05, 08-09

**Most goals:** 172; 99-00

**Most assists:** 220; 00-01

**Most points:** 386; 00-01

**Lowest GAA:** 0.74; 08-09

**All-Time Individual Game Records**

**Most goals:** 6; Sarah Moe vs. Bethel (2/3/01)

**Most assists:** 6; Andrea Peterson vs. St. Catherine (2/11/05)

**Most points:** 8; Andrea Peterson vs. St. Catherine (2/11/05)

**Fastest goal:** 0:08; Noelle Skalko vs. Saint Mary's (2/27/98)

**All-Time Individual Season Records**

**Most goals:** 32; Andrea Peterson (04-05)

**Most assists:** 40; Noelle Skalko (97-98)

**Most points:** 68; Noelle Skalko (97-98)

**Most penalties:** 31; Linnea Carlson (99-00), Lindsey Hjelm (10-11)

**Most penalty minutes:** 62; Linnea Carlson (99-00), L. Hjelm (10-11)

**Lowest goals against average (6 game minimum):** 0.69; Emily Klatt (08-09)

**Most hat tricks:** 4; Amy Black (97-98), Linnea Carlson (99-00), Sarah Moe (00-01)

**All-Time Individual Career Records**

**Most goals:** 80; Sarah Moe (98-99, 00-02)

**Most assists:** 107; Andrea Peterson (03-07)

**Most points:** 185; Andrea Peterson (03-07)

**Goalie Records (min. 500 minutes)**

**Most minutes:** 4202:33; Danielle Justice (08-P)

**Goals against average:** 0.95; Michelle Schaefer (00-01)

**Saves:** 1,094; Danielle Justice (08-P)

**Save percentage:** .936; Danielle Justice (08-P)

**Wins:** 54; Danielle Justice (08-P)



## Combined Team Statistics

### Gustavus Adolphus Hockey Gustavus Adolphus Combined Team Statistics (as of Jan 23, 2012) All games

Date	Opponent	Score	Att.
Nov 04	CONCORDIA(WI)	w 7-1	257
Nov 05	ST. NORBERT COLLEGE	w 8-1	137
* Nov 11	at Bethel University	w 5-1	157
* Nov 12	BETHEL UNIVERSITY	w 6-3	209
* Nov 18	ST. THOMAS	w 5-3	281
* Nov 19	at St. Thomas	w 3-2	125
* 12/02/11	at Augsburg College	w 9-0	159
* Dec 03	AUGSBURG COLLEGE	w 7-2	174
Dec 06	#7 UW-RIVER FALLS	Tot 1-1	129
Dec 13	#9 UW-SUPERIOR	Wot 1-0	174
01/06/12	at UW-Stevens Point	w 6-0	115
01/07/12	at UW-Stevens Point	w 5-2	97
* Jan 20	at St. Kate's	w 7-0	160
* Jan 21	ST. KATE'S	w 3-0	137

TEAM STATISTICS	GAC	OPP
<b>SHOT STATISTICS</b>		
Goals-Shot attempts	73-571	16-230
Shot pct.	.128	.070
Goals/Game	5.2	1.1
Shots/Game	40.8	16.4
<b>POWER PLAYS</b>		
Goals-Power Plays	21-63	3-49
Conversion Percent	.333	.061
Shot Attempts	114	49
Shot Percent	.184	.061
<b>SHORT-HANDED</b>		
Goals-Shot attempts	4-20	1-4
Shot Percent	.200	.250
<b>GOAL BREAKDOWN</b>		
Power Play	21	3
Short-handed	4	1
Empty net	1	0
Penalty	0	0
Unassisted	11	2
Overtime	1	0
Shootout	0	0
Delayed Penalty	0	0
<b>PENALTIES</b>		
Number	55	71
Minutes	113	142
Penalties/Game	3.9	5.1
Pen minutes/Game	8.1	10.1
FACEOFFS (W-L)	439-225	225-439
Faceoff W-L Pct.	.661	.339
SHOOTOUTS (Made-Att)	0-0	0-0

Record:	Overall	Home	Away	Neutral
ALL GAMES	13-0-1	7-0-1	6-0-0	0-0-0
CONFERENCE	8-0-0	4-0-0	4-0-0	0-0-0
NON-CONFERENCE	5-0-1	3-0-1	2-0-0	0-0-0

#	Player	gp	g	a	pts	sh	sh%	pen-min	pp	sh
21	Allie Schwab	14	15	12	27	67	.224	5-10	6	0
8	Mollie Carroll	14	10	13	23	29	.345	2-7	2	2
18	Carolyn Draayer	14	14	3	17	56	.250	2-4	4	0
17	Lindsey Hjelm	14	6	8	14	68	.088	16-32	3	0
9	Amanda Cartony	12	3	10	13	23	.130	1-2	0	1
16	Kelsey Kennedy	14	1	9	10	29	.034	3-6	1	0
4	Maddie Bergh	14	0	10	10	36	.000	4-8	0	0
19	Kelly Thotland	14	3	5	8	25	.120	3-6	2	0
10	Courtney Boucher	14	3	4	7	30	.100	3-6	0	0
5	Jenna Christensen	14	3	3	6	33	.091	2-4	0	0
22	Marissa Brandt	14	2	3	5	10	.200	0-0	1	0
23	Kayla Ingbretson	10	2	3	5	12	.167	1-2	1	0
2	Meagan Wanecke	14	3	1	4	32	.094	3-6	0	1
14	Melissa Doyle	14	2	2	4	23	.087	0-0	0	0
20	Grace Olson	11	1	3	4	13	.077	1-2	1	0
11	Jess Harren	13	2	1	3	13	.154	1-2	0	0
15	Leah Johnson	8	2	1	3	14	.143	0-0	0	0
3	Gina DeNucci	11	1	1	2	16	.062	2-4	0	0
7	Beth Olson	4	0	1	1	2	.000	1-2	0	0
6	Whitney Schaff	7	0	1	1	7	.000	1-2	0	0
12	Taylor Skelton	7	0	1	1	6	.000	1-2	0	0
G	G	1	0	0	0	0	.000	0-0	0	0
24	Heidi Korin	2	0	0	0	3	.000	2-4	0	0
13	Emily Raber	1	0	0	0	0	.000	0-0	0	0
TM	TEAM	2	0	0	0	24	.000	1-2	0	0
Total		14	73	95	168	571	.128	55-113	21	4
Opponents		14	16	21	37	230	.070	71-142	3	1

#	Goalie	gp	min	ga	gaavg	saves	save%	w-l-t
1	Danielle Justice	10	533:37	8	0.90	144	.947	9-0-1
35	Marah Sobczak	7	294:51	7	1.42	70	.909	4-0-0
30	Katherine Jorgenson	1	20:00	1	3.00	0	.000	0-0-0
TM	EMPTY NET	2	0:00	0	-	0	.000	0-0-0
Total		14	848:28	16	1.13	214	.930	13-0-1
Opponents		14	847:48	73	5.17	498	.872	0-13-1

Attendance Summary	GAC	Opponent
Total	1498	813
Dates/Avg Per Date	8/187	6/136
Neutral Site #/Avg	0/0	

Goals by Period	1st	2nd	3rd	OT	Total
Gustavus Adolphus	21	27	24	1	73
Opponents	1	12	3	0	16

Shots by Period	1st	2nd	3rd	OT	Total
Gustavus Adolphus	174	204	190	3	571
Opponents	68	77	78	7	230

Saves by Period	1st	2nd	3rd	OT	Total
Gustavus Adolphus	67	65	75	7	214
Opponents	152	177	167	2	498



## Overall Team Statistics

### Gustavus Adolphus Hockey Gustavus Adolphus Overall Team Statistics (as of Jan 23, 2012) All games

Overall: 13-0-1 Conf: 8-0-0 Home: 7-0-1 Away: 6-0-0 Neut: 0-0-0

TEAM STATISTICS	GAC	OPP
<b>SHOT STATISTICS</b>		
Goals-Shot attempts	73-571	16-230
Shot pct.	.128	.070
Goals/Game	5.2	1.1
Shots/Game	40.8	16.4
Assists	95	21
<b>POWER PLAYS</b>		
Goals-Power Plays	21-63	3-49
Conversion Percent	.333	.061
Shot Attempts	114	49
Shot Percent	.184	.061
<b>SHORT-HANDED</b>		
Goals-Shot attempts	4-20	1-4
Shot Percent	.200	.250
<b>GOAL BREAKDOWN</b>		
Total Goals	73	16
Power Play	21	3
Short-handed	4	1
Empty net	1	0
Penalty	0	0
Unassisted	11	2
Overtime	1	0
Shootout	0	0
Delayed Penalty	0	0
<b>PENALTIES</b>		
Number	55	71
Minutes	113	142
Penalties/Game	3.9	5.1
Pen minutes/Game	8.1	10.1
Minor	45	56
Major	1	0
10-minute Misconduct	0	0
Game Misconduct	0	0
Gross Misconduct	0	0
Match	0	0
<b>FACEOFFS (W-L)</b>		
Faceoff W-L Pct.	439-225	225-439
	.661	.339
<b>SHOOTOUTS (Made-Att)</b>		
	0-0	0-0
<b>ATTENDANCE</b>		
Total	1498	813
Dates/Avg Per Date	8/187	6/136
Neutral Site #/Avg	0/0	

Goals by Period	1st	2nd	3rd	OT	Total
Gustavus Adolphus	21	27	24	1	73
Opponents	1	12	3	0	16

Shots by Period	1st	2nd	3rd	OT	Total
Gustavus Adolphus	174	204	190	3	571
Opponents	68	77	78	7	230

Saves by Period	1st	2nd	3rd	OT	Total
Gustavus Adolphus	67	65	75	7	214
Opponents	152	177	167	2	498



**Overall Individual Statistics**



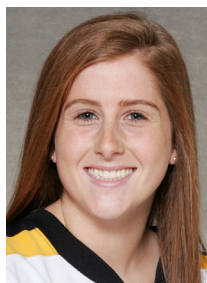
**No. 1**  
Danielle Justice  
Senior - Goalie  
Min: 533:37  
GAA: .90  
Save Percentage: .947  
Record: 9-0-1



**No. 7**  
Beth Olson  
First-year - Defense  
Games Played: 4  
Goals: 0  
Assists: 1  
Points: 1



**No. 13**  
Emily Raber  
First-year - Defense  
Games Played: 1  
Goals: 0  
Assists: 0  
Points: 0



**No. 2**  
Meagan Wanecke  
Junior - Forward  
Games Played: 14  
Goals: 3  
Assists: 1  
Points: 4



**No. 8**  
Mollie Carroll  
Senior - Forward  
Games Played: 14  
Goals: 10  
Assists: 13  
Points: 23



**No. 14**  
Melissa Doyle  
Sophomore - Forward  
Games Played: 14  
Goals: 2  
Assists: 2  
Points: 4



**No. 3**  
Gina DeNucci  
Senior - Defense  
Games Played: 11  
Goals: 1  
Assists: 1  
Points: 2



**No. 9**  
Amanda Cartony  
Sophomore - Forward  
Games Played: 12  
Goals: 3  
Assists: 10  
Points: 13



**No. 15**  
Leah Johnson  
First-year - Forward  
Games Played: 8  
Goals: 2  
Assists: 1  
Points: 3



**No. 4**  
Maddie Bergh  
Sophomore - Defense  
Games Played: 14  
Goals: 0  
Assists: 10  
Points: 10



**No. 10**  
Courtney Boucher  
First-year - Forward  
Games Played: 14  
Goals: 3  
Assists: 4  
Points: 7



**No. 16**  
Kelsey Kennedy  
Junior - Defense  
Games Played: 14  
Goals: 1  
Assists: 9  
Points: 10



**No. 5**  
Jenna Christensen  
Junior - Forward  
Games Played: 14  
Goals: 3  
Assists: 3  
Points: 6



**No. 11**  
Jess Harren  
Junior - Defense  
Games Played: 13  
Goals: 2  
Assists: 1  
Points: 3



**No. 17**  
Lindsey Hjelm  
Junior - Defense  
Games Played: 14  
Goals: 6  
Assists: 8  
Points: 14



**No. 6**  
Whitney Schaff  
Senior - Forward  
Games Played: 7  
Goals: 0  
Assists: 1  
Points: 1



**No. 12**  
Taylor Skelton  
First-year - Forward  
Games Played: 7  
Goals: 0  
Assists: 1  
Points: 1



**No. 18**  
Carolyn Draayer  
First-year - Forward  
Games Played: 14  
Goals: 14  
Assists: 3  
Points: 17



### Overall Individual Statistics



**No. 19**  
 Kelly Thotland  
 First-year - Defense  
 Games Played: 14  
 Goals: 3  
 Assists: 5  
 Points: 8



**No. 30**  
 Katerine Jorgenson  
 Sophomore - Goalie  
 Min: 20:00  
 GAA: 3.00  
 Save Percentage: .000  
 Record: 0-0-0



**No. 20**  
 Grace Olson  
 Senior - Forward  
 Games Played: 11  
 Goals: 1  
 Assists: 3  
 Points: 4



**No. 35**  
 Marah Sobczak  
 Sophomore - Goalie  
 Min: 294:51  
 GAA: 1.42  
 Save Percentage: .909  
 Record: 4-0-0



**No. 21**  
 Allie Schwab  
 Senior - Forward  
 Games Played: 14  
 Goals: 15  
 Assists: 12  
 Points: 27



**No. 22**  
 Marissa Brandt  
 First-year - Forward  
 Games Played: 14  
 Goals: 2  
 Assists: 3  
 Points: 5



**No. 23**  
 Kayla Ingbretson  
 Junior - Forward  
 Games Played: 10  
 Goals: 2  
 Assists: 3  
 Points: 5



**No. 24**  
 Heidi Korin  
 First-year - Defense  
 Games Played: 2  
 Goals: 0  
 Assists: 0  
 Points: 0

### 2011-12 Statistical Leaders

**Goals:** Allie Schwab, 15  
**Assists:** Mollie Carroll, 13  
**Points:** Allie Schwab, 27  
**Shot Pct:** Mollie Carroll, .345  
**+/-:** Schwab and Kennedy, +21  
**Penalties:** Lindsey Hjelm, 16-32  
**PP Goals:** Allie Schwab, 6  
**SH Goals:** Mollie Carroll, 2  
**GW Goals:** Draayer and Schwab, 5  
**GAA:** Danielle Justice, 0.90  
**Save Pct:** Danielle Justice, .947

### THE CARROLL FILE Mike Carroll's Coaching Record

Year	Overall	MIAC	Conf. Finish
1999-00	18-10-1	12-5-1	3rd
2000-01	23-6-1	16-2-0	1st
2001-02	23-5-2	18-0-1	1st
2002-03	14-9-4	11-4-3	3rd
2003-04	22-6-0	16-2-0	2nd
2004-05	25-4-1	17-1-0	1st
2005-06	22-5-2	17-0-1	1st
2006-07	25-3-0	17-1-0	1st
2007-08	25-3-0	18-0-0	1st
2008-09	22-2-4	16-0-2	1st
2009-10	22-6-2	14-3-1	1st
2010-11	22-5-3	14-2-2	1st
2011-12	13-0-1	8-0-0	-
<b>TOTALS</b>	<b>276-64-21</b>	<b>194-20-3</b>	

Years at Gustavus: 13  
 NCAA Appearances: 8  
 MIAC Titles: 9



# 2011-12 Gustavus Women's Hockey

<u>NO.</u>	<u>NAME</u>	<u>POS</u>	<u>YR</u>	<u>HGT</u>	<u>HOMETOWN</u>	<u>HIGH SCHOOL</u>
1	Danielle Justice	G	SR	5-3	Alexandria, Minn.	Jefferson
2	Meagan Wanecke	F	JR	5-4	Delafield, Wis.	Kettle Mouraine
3	Gina DeNucci	D	SR	5-7	Chanhassen, Minn.	Minnetonka
4	Maddie Bergh	D	SO	5-4	Eden Prairie, Minn.	Benilde St. Margaret's
5	Jenna Christensen *	F	JR	5-6	Albert, Lea, Minn.	Albert Lea
6	Whitney Schaff	F	SR	5-2	Cambridge, Minn.	Cambridge
7	Beth Olson	D	FY	5-9	Warroad, Minn.	Warroad
8	Mollie Carroll **	F	SR	5-4	Eagan, Minn.	Eagan
9	Amanda Cartony	F	SO	5-7	Stillwater, Minn.	Stillwater
10	Courtney Boucher	F	FY	5-7	Hastings, Minn.	Hastings
11	Jess Harren *	D	JR	5-7	Woodbury, Minn.	Hill-Murray
12	Taylor Skelton	F	FY	5-7	Ely, Minn.	Ely
13	Emily Raber	D	FY	5-4	Buena Park, Calif.	John. F. Kennedy
14	Melissa Doyle	F	SO	5-0	White Bear Lake, Minn.	Hill-Murray
15	Leah Johnson	F	FY	5-4	Chanhassen, Minn.	Chaska
16	Kelsey Kennedy	D	JR	5-3	Eagan, Minn.	Eagan
17	Lindsey Hjelm *	D	JR	5-7	North Oaks, Minn.	Mounds View
18	Carolyn Draayer	F	FY	5-6	Deephaven, Minn.	Minnetonka
19	Kelly Thotland	D	FY	5-3	Edina, Minn.	Edina
20	Grace Olson	F	SR	5-7	Apple Valley, Minn.	Holy Angels
21	Allie Schwab	F	SR	5-8	Stillwater, Minn.	Stillwater
22	Marissa Brandt	F	FY	5-6	Vadnais Heights, Minn.	Hill-Murray
23	Kayla Ingbretson	F	JR	5-4	Mound, Minn.	Mound-Westonka
24	Heidi Korin	D	FY	5-8	Corcoran, Minn.	Wayzata
30	Katherine Jorgenson	G	SO	5-9	Colleyville, Texas	Kent School
35	Marah Sobczak	G	SO	5-4	Stillwater, Minn.	Stillwater

\*\* Denotes Captain

\* Denotes Assistant Captain

Head Coach: Mike Carroll (13th Season)

Assistant Coach: Stephen Carroll (12th season)

Assistant Coach: Kirstin Peterson (First season)

Assistant Coach: Matt Carroll (First season)